



SAP S/4HANA and SAP Analytics (Focus on SAP Analytics Cloud): Where to Do What?

Jürgen Butsmann, Solution Management SAP S/4HANA, SAP SE
ASUG82186

About the Speakers

Jürgen Butsmann, SAP SE

- SAP SE, Solution Management SAP S/4HANA
- 22 years with SAP, Consulting, CoE, Solution Management
- Would rather use all the stages @SAPPHIRE to play music with my Big Band... 😊

Key Outcomes/Objectives

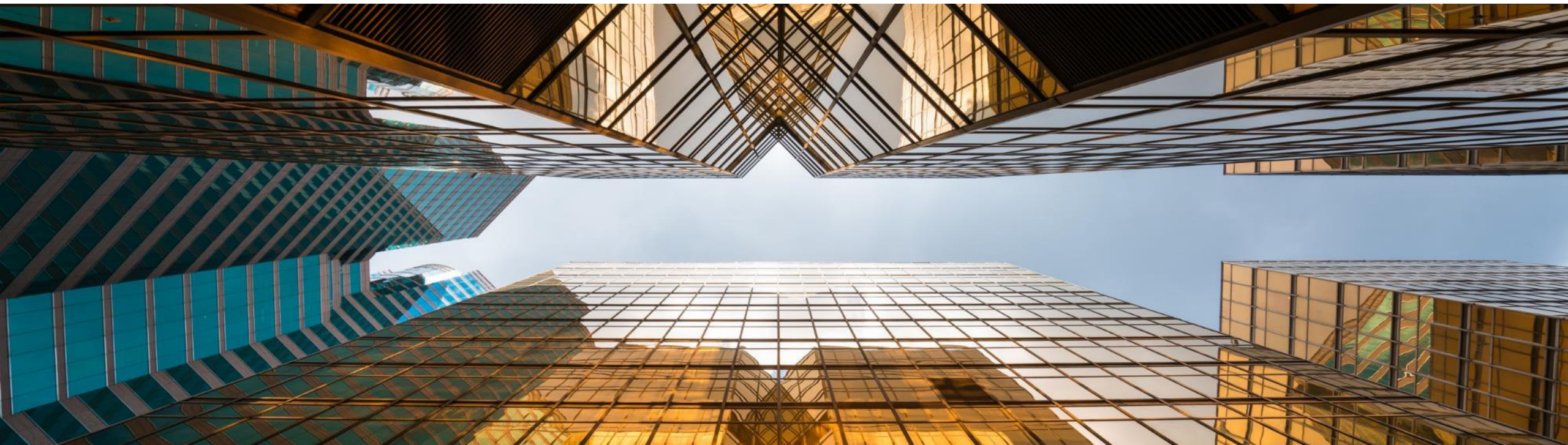
1. Understand value proposition, positioning and use cases of the analytical solutions in the context of SAP S/4HANA
2. Get an overview of architecture, tools and integration points
3. Be able to discuss the solution properly and make good decisions

Agenda

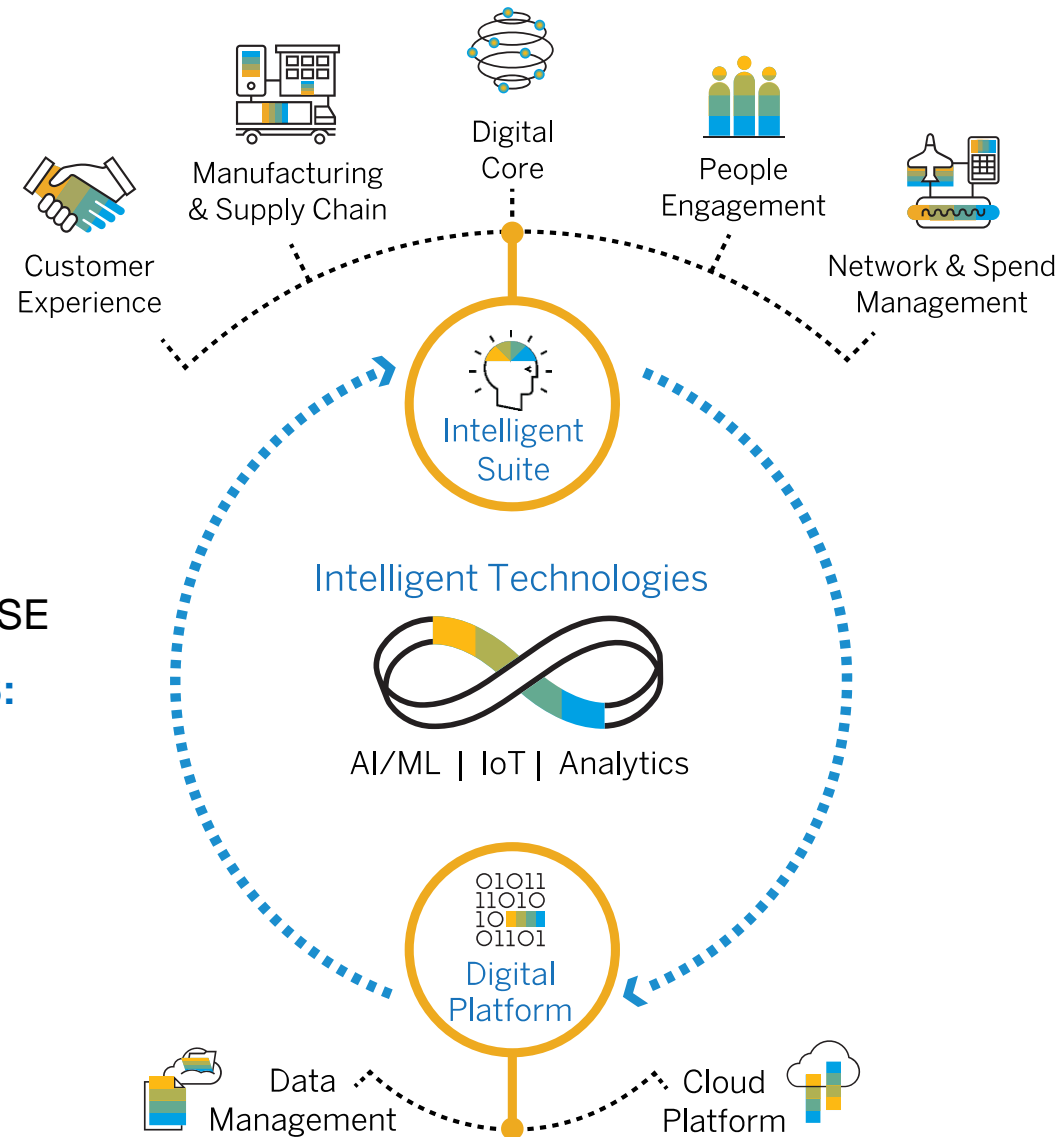
- The context: The intelligent ERP, the digital core SAP S/4HANA and the analytical setup
- What is embedded analytics in SAP S/4HANA?
- Do you still need an additional visualization tool? An EDW? Why SAP Analytics Cloud? Why SAP BW/4HANA?
- How do the solutions integrate?
- What to consider on your route to Analytics with SAP S/4HANA?
- Summary

The context:

**The intelligent ERP, the digital core SAP
S/4HANA and the analytical setup**

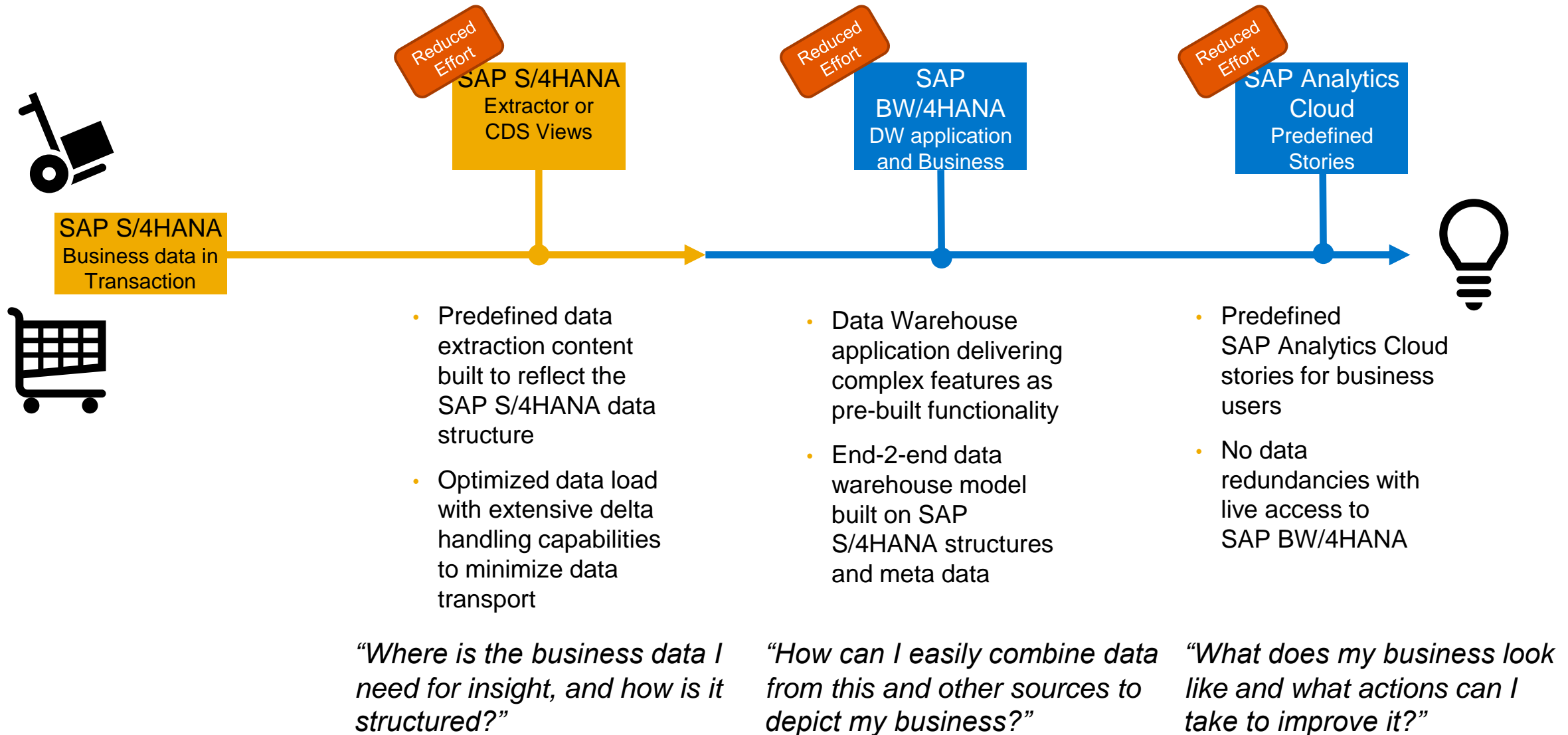


SAP Strategy – Deliver the Intelligent Enterprise

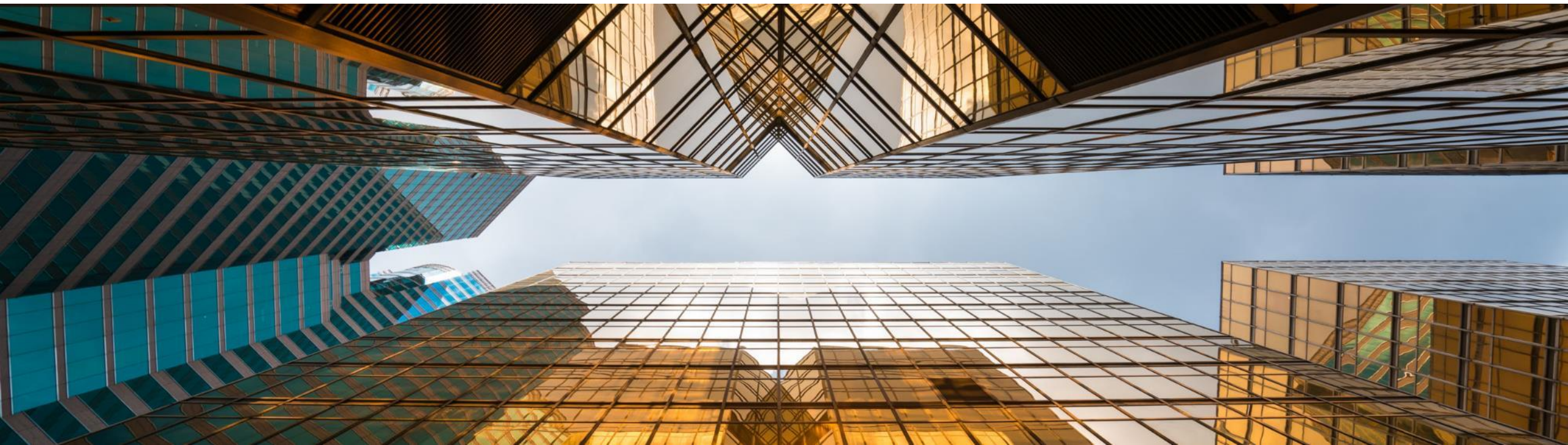


THE INTELLIGENT ENTERPRISE
features **3 KEY COMPONENTS:**

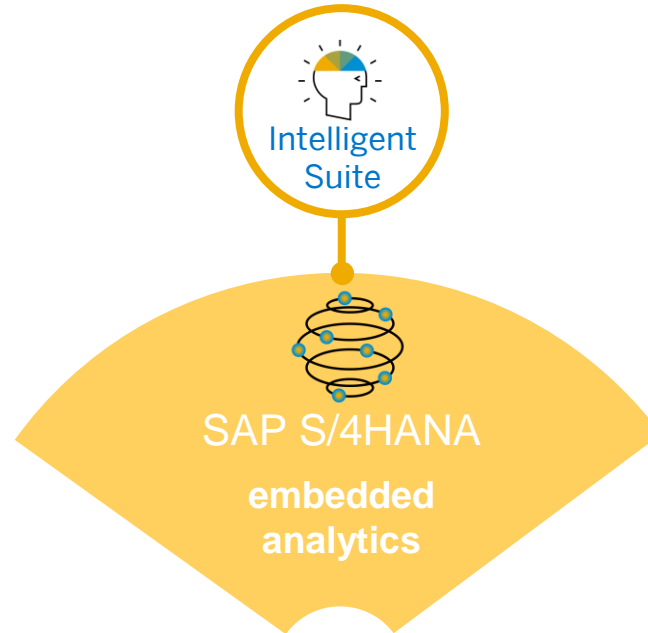
Value summary: Lower your TCO with a unique transaction-to-insight process



What is embedded analytics in SAP S/4HANA?



What is SAP S/4HANA embedded analytics



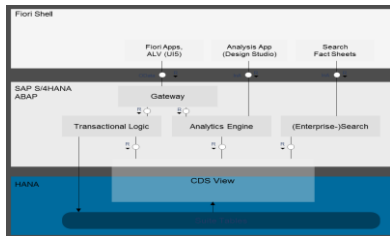
SAP S/4HANA embedded analytics =

Analytics in the context of SAP ERP + SAP HANA + Intelligent Technologies

SAP S/4HANA Digital Core - the Guiding Principles - Value



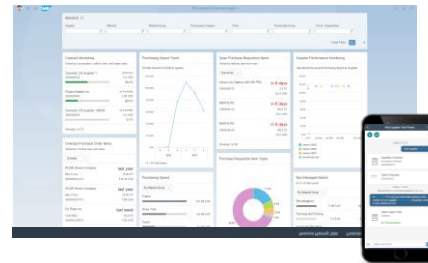
Modern Architecture for Instant Insight



Simple data structures
Speed on primary data
Single source of truth



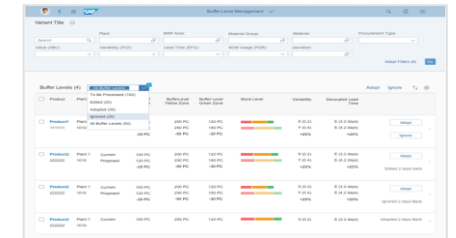
Intuitive User Experience



Role-Based
Any device
Embedded Analytics
Cockpits with exception based worklists



Intelligent ERP Next Generation Business Processes

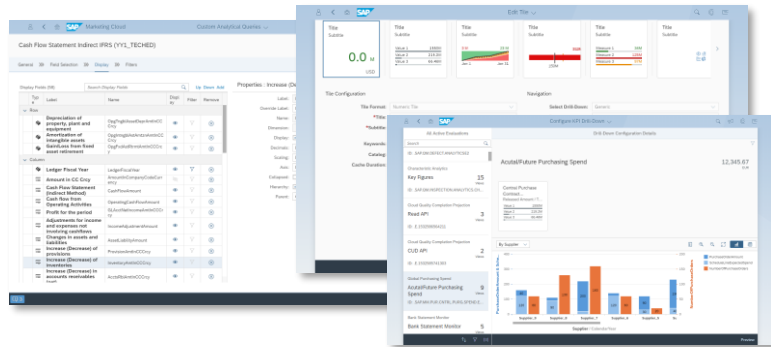


Automation
Machine Learning
Prediction & Simulation

SAP S/4HANA Digital Core - Examples



Modern Architecture for Instant Insight

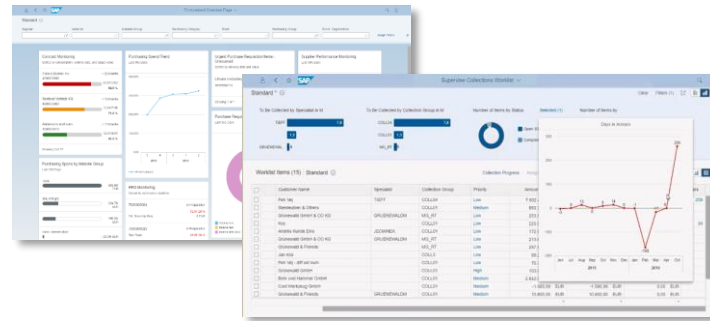


Easy modeling on simple data models

- Real-time data availability
- Easy drill down
- Best possible performance
- Custom data model extensions (in SAP Fiori)



Intuitive User Experience

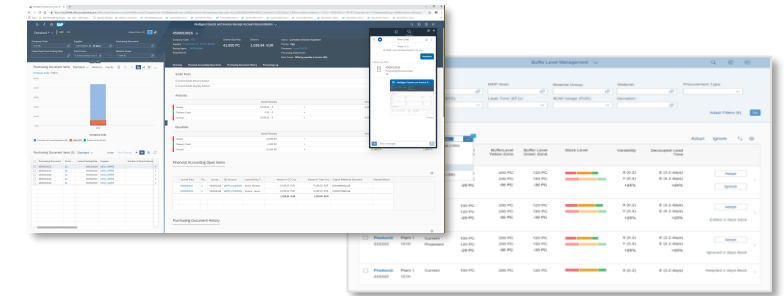


Enablement of fact-driven process handling

- Combined screens with transactional and analytical information
- Proper prioritization in transactional process steps
- Decision support where it is needed (inside the transactional screen)



Intelligent ERP Next Generation Business Processes

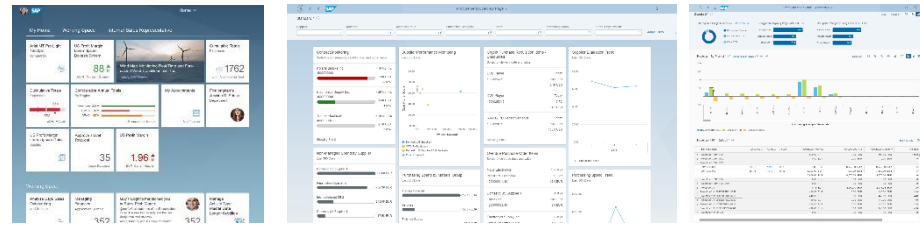


Integrate intelligent technologies in processes

- Integration of Predictive and ML data inside analytical data models
- Embedded decision support
- Allow process automation where needed

Analytics with SAP S/4HANA – high level architecture

SAP S/4HANA



Intelligent Technologies



Visualization

SAP Fiori UI
analytical apps, reports, KPIs,... delivered as part of SAP S/4HANA, extensible by the customer

SAP Analytics
access SAP S/4HANA data directly via Transient analytical queries

Access

Odata services

Transient analytical queries

Modelling

ABAP-CDS-Models
(for analytical and transactional purposes)

SAP BW/4HANA
(for seamlessly extending transactions with data warehousing workflows)

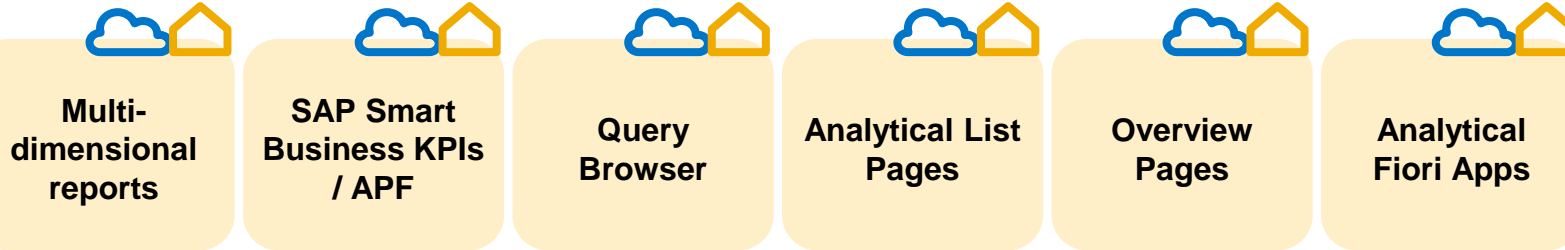
Persistency

Database tables on SAP HANA

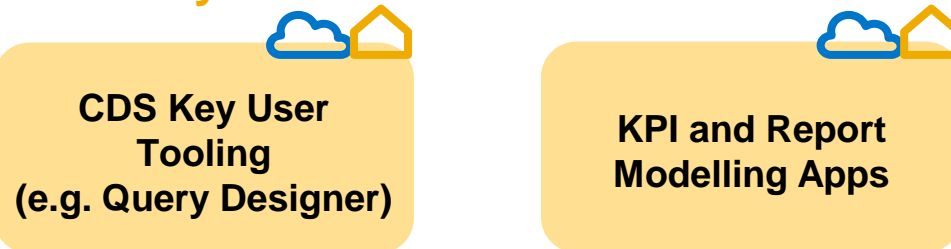
Database tables on SAP HANA

SAP S/4HANA embedded analytics – Overview of current Offering per Type of User

End-User: Analyze the Data and act according to Insights



Key-User: Enable the End-User



IT-User: Provide the single source of truth in one semantic layer

CDS View maintenance:
ABAP for Eclipse

SAP Analytics

SAP Analytics Cloud

SAP BusinessObjects Enterprise:

Examples: Analysis for Office, Design Studio

Demo



SAP S/4HANA – Standard Finance (GL) reporting

SAP S/4HANA Cloud free system demo

- Standard reporting
- View Browser
- Multidimensional reporting client

Demo



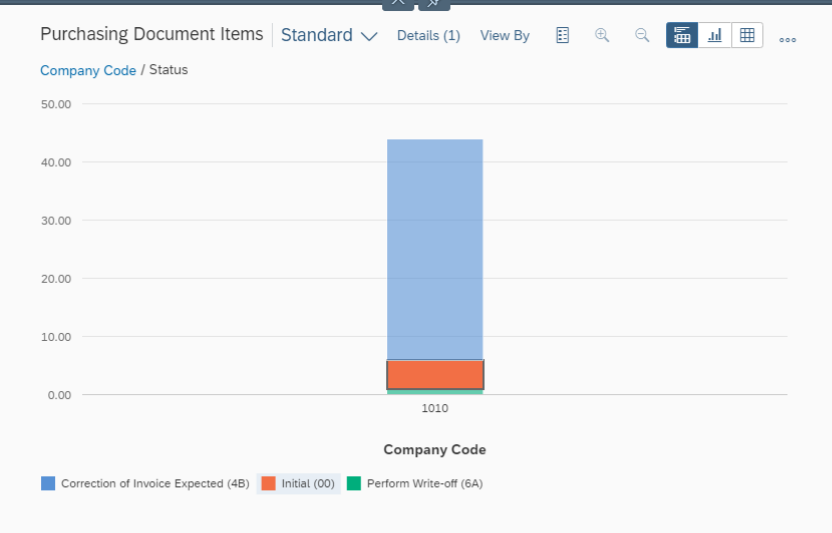
SAP S/4HANA – GR/IR Monitor

SAP S/4HANA embedded analytics in practice

Standard * 27K Adapt Filters (4)

Company Code: Supplier: 15 More Purchasing Document:

Latest Open Item Posting Date: Smart Facts: Material Group:



Purchasing Document Items (5)

Standard Post Clearing

<input type="checkbox"/>	Purchasing Document	Purch...	Latest Posting Date	Supplier	Number of Goods Receipt
<input checked="" type="checkbox"/>	4500010015	10	09/10/2018	USSU_GRIR5	>
<input type="checkbox"/>	4500010015	30	05/08/2018	USSU_GRIR5	>
<input type="checkbox"/>	4500010016	10	05/09/2018	USSU_GRIR5	>
<input type="checkbox"/>	4500010016	20	05/09/2018	USSU_GRIR5	>
<input type="checkbox"/>	4500010016	30	05/09/2018	USSU_GRIR5	>

Intelligent Goods and Invoice Receipt Account Reconciliation

4500010016 10

Company Code: 1010 Ordered Quantity: 41.000 PC Balance: 1,039.84 EUR Status: Correction of Invoice Expected

Supplier: TronicTrade Inc. (USSU_GRIR5) Priority: High

Buying Agent: _SAPD025860 Processor: Lucie POLESE

Requisitioner: Processing Department:

Root Cause: Differing quantity in invoice (3D)

- Overview
- Financial Accounting Open Items
- Purchasing Document History
- Processing Log

Smart Facts

- Is Invoice Goods Amount Surplus
- Is Invoice Goods Quantity Surplus

Amounts

	Goods Receipts	Invoice
Goods	5,199.20 €	< 6,239.04
Delivery Costs	0.00 €	=
Overall	5,199.20 €	< 6,239.04

Quantities

	Goods Receipts	Invoice
Goods	10.000 PC	< 12.000 PC
Delivery Costs	0.000 PC	= 2.000 PC
Overall	10.000 PC	< 12.000 PC

Financial Accounting Open Items

Journal Entry	Po...	Journal ...	G/L Account	Journal Entry T...	Amount in CC Crcy	Amount in Trans Crcy	Original Reference Document	Payment Blocki...
5000000017	2	05/09/2018	GR/IR (21120000)	Goods Receipt ...	-5,199.20 EUR	-5,199.20 EUR	50000089602018	
5100000011	2	05/09/2018	GR/IR (21120000)	Invoice - Gross ...	6,239.04 EUR	6,239.04 EUR	51000079982018	
					1,039.84 EUR	1,039.84 EUR		

Purchasing Document History

PA New Chat blablaba

Today 03:22

GL MGR invited Purchase Admin to the chat.

Added by GL MGR

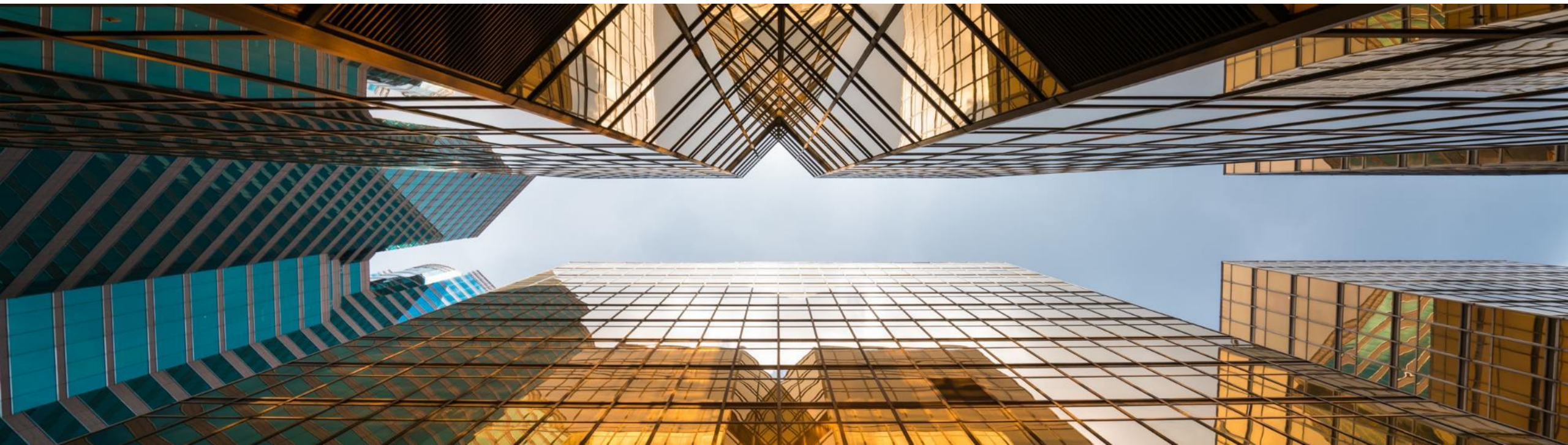
4500010016
Purchasing Document Item
10

Intelligent Goods and Invoice R...

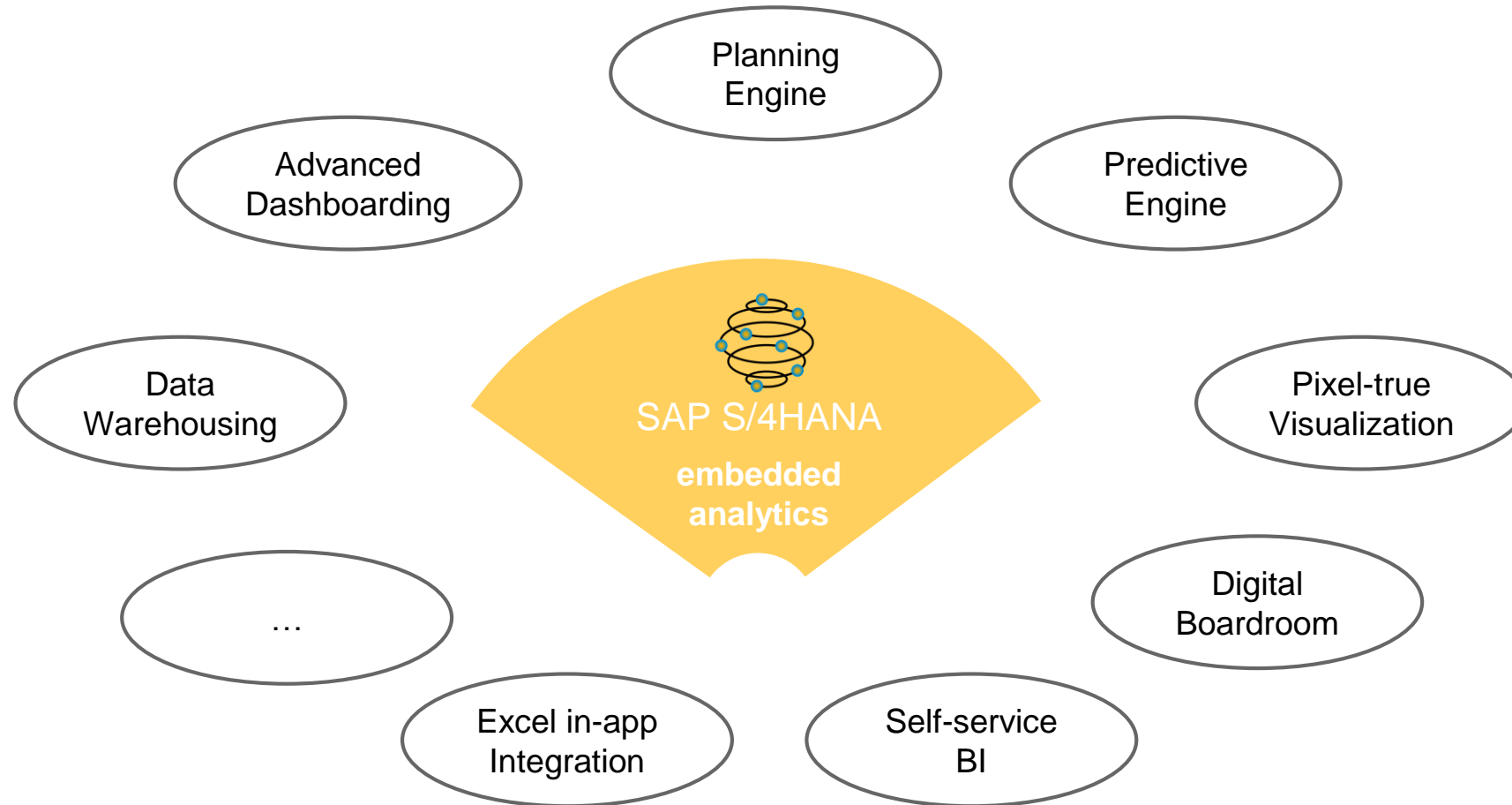
Add a message...

**Do you still need an additional
visualization tool? An EDW?**

**Why SAP Analytics Cloud? Why SAP
BW/4HANA?**



What is possible and what is not, using SAP S/4HANA embedded analytics?



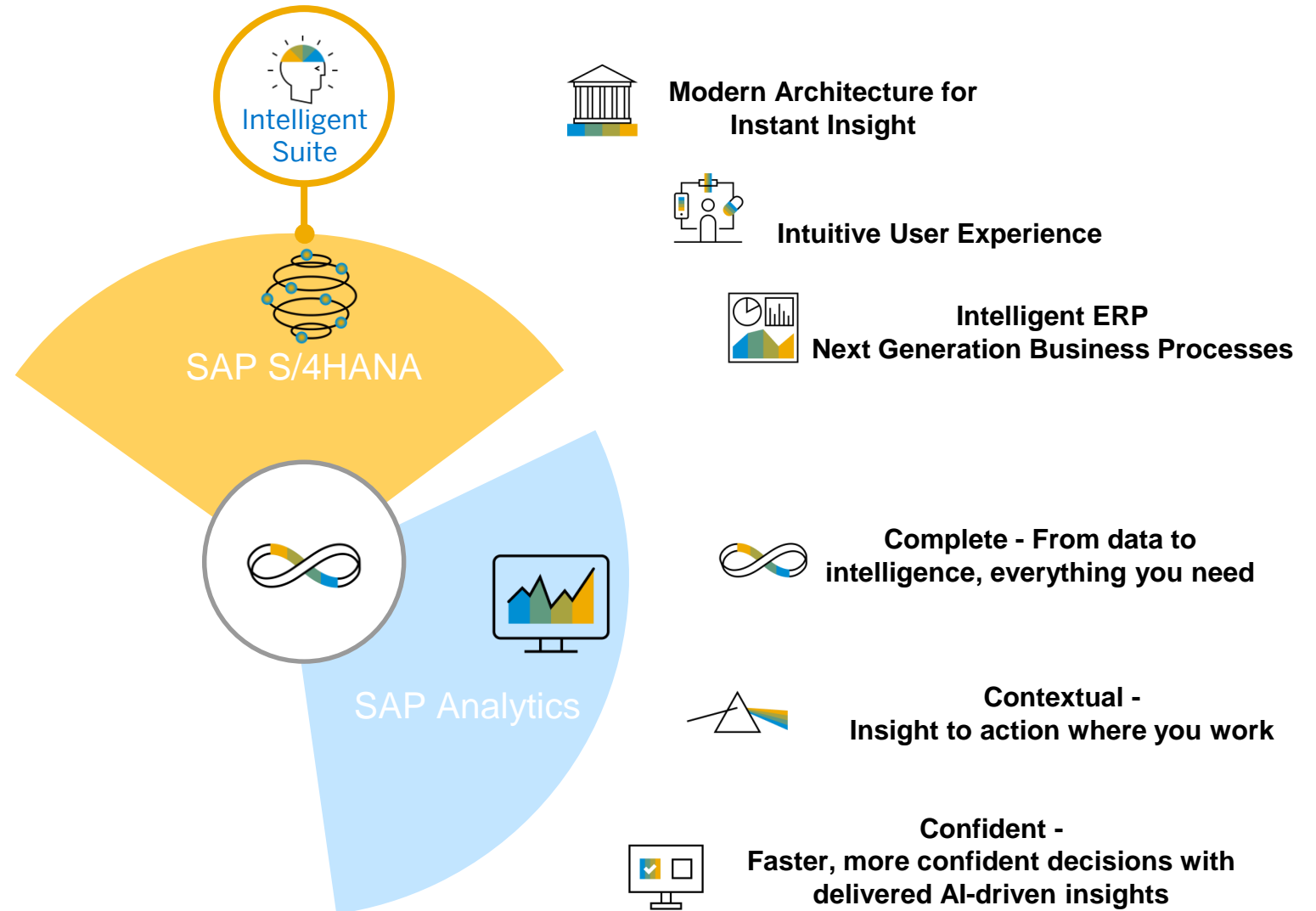


**"With SAP S/4HANA and SAP S/4HANA embedded analytics,
do I still need an additional visualization tool?"**

"Yes!"

Analytics in the context of SAP S/4HANA

The complete portfolio



SAP Analytics Cloud – Make Intelligent Decisions



Complete - from data to intelligence



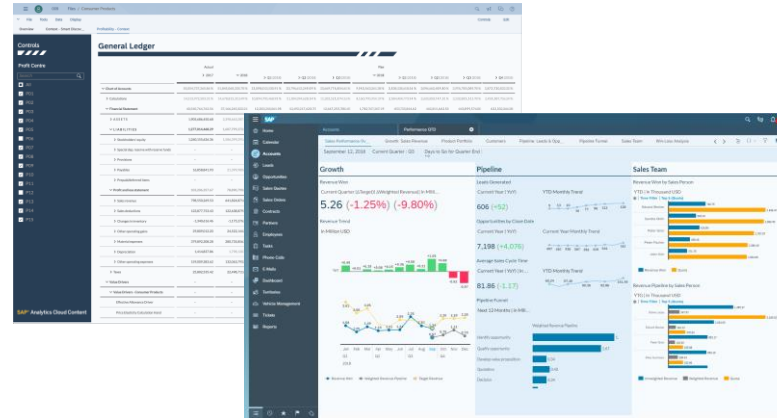
One simple cloud

Common data model

Harmonized analytics



Contextual insight to action



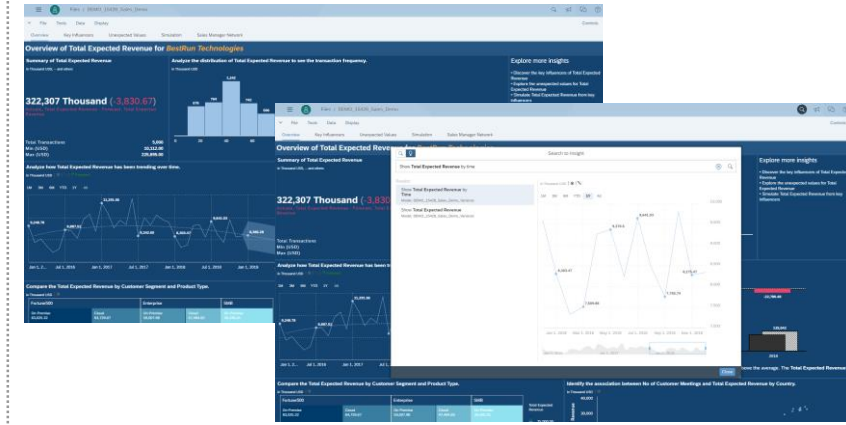
Embedded into enterprise apps

Social collaboration

Live connection



Confident decisions with delivered AI-driven insights



Smart Insights and Predict

Search to Insight

Smart Discovery

SAP Analytics Cloud – Make Intelligent Decisions



Complete - from data to intelligence

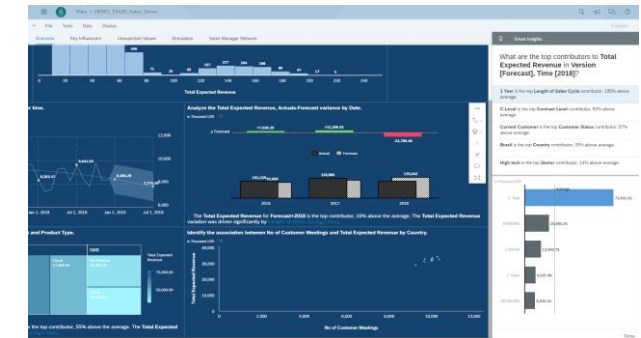


Contextual insight to action

Product	Enterprise	Midwest US	South US
All Products	1,142.77	289.42	141.93
Apparel	705.23	120.34	4.54
Shirts	597.00	147.75	16.68
Shorts	41.47	120.34	4.54
Caps	66.76	11.18	11.86
Footwear	437.54	141.67	125.25
Cross Trainers	363.94	120.89	110.66
Running Shoes	73.60	20.99	14.59



Confident decisions with delivered AI-driven insights



All in one platform built for SaaS

- Get everything you need from data to decisions
- Analyze, plan, and predict all in one place
- Scale to meet the needs of diverse users and all types of decisions (strategic, operational, and tactical)

Planning, analysis, and execution in one UX

- Plan, analyze, and collaborate in one UX/system for instant insight to action
- Increase engagement, accountability, and accuracy with collaboration embedded in context
- Access to on-prem data & apps without having to replicate in the cloud

Augmented analytics for business users

- Augment manual insights with embedded intelligence that explains results
- Ask questions in natural language to get the answers you seek
- Detect causes and take the next best action using automated ML
- Predict potential outcomes with the push of a button

SAP Analytics Cloud + SAP S/4HANA = High-performing Analytics



BI, Predictive & Planning based on SAP S/4HANA business logic **in Real-Time** – data changes and modifications reflected **instantly**



Unique deep integration with Live Connection to CDS Views, Business Content (models, stories, dashboards), Fiori tile integration, Jump-to-transaction



Leverage existing SAP S/4HANA **Security & Authorizations** Plug & Play without any back-end modifications



Enrich SAP S/4HANA data by adding your own calculations (formulas, exception aggregations) and **delegate processing** to SAP S/4HANA



Use the **Analytics Hub** to bring all your information together and accelerate **adoption** of analytics in your business user community



Explore **SAP Digital Boardroom** for a real-time view of your critical business metrics in one place, supporting steering excellence of your **Intelligent Enterprise**



**"With SAP S/4HANA and SAP S/4HANA embedded analytics,
do I still need my BW?"**

"Yes!"

SAP BW/4HANA complements SAP S/4HANA

SAP S/4HANA is not an EDW

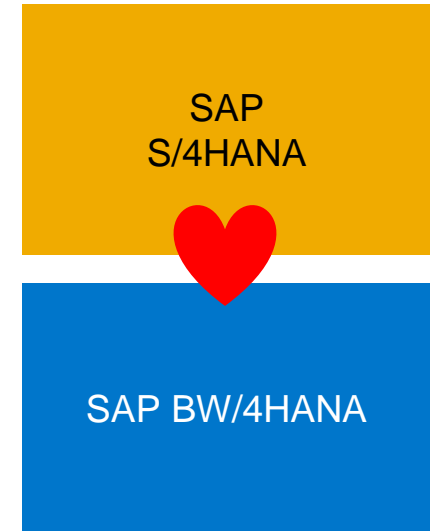
- SAP S/4HANA is the next generation intelligent ERP and part of an Intelligent Enterprise - sized, tuned, and maintained for optimal performance as transactional system
- A modern simplified architecture, the new user experience (SAP Fiori) and integrated intelligent technologies such as Machine Learning allow for new business processes and even automation
- SAP S/4HANA embedded analytics focuses on fact-driven process handling and embedded decision support inside of transactions - embedded BW only for support of transactional workflows

SAP BW/4HANA is an EDW

- Allows harmonization of all enterprise data (ERP + non-SAP, governance, corporate memory, big data, ...)
- Delivers complete data warehouse tools (rich integrated toolset for data warehousing)
- Provides deep integration with SAP Analytics and SAP data management (SAP Data Hub, SAP HANA SQL DW, ...)

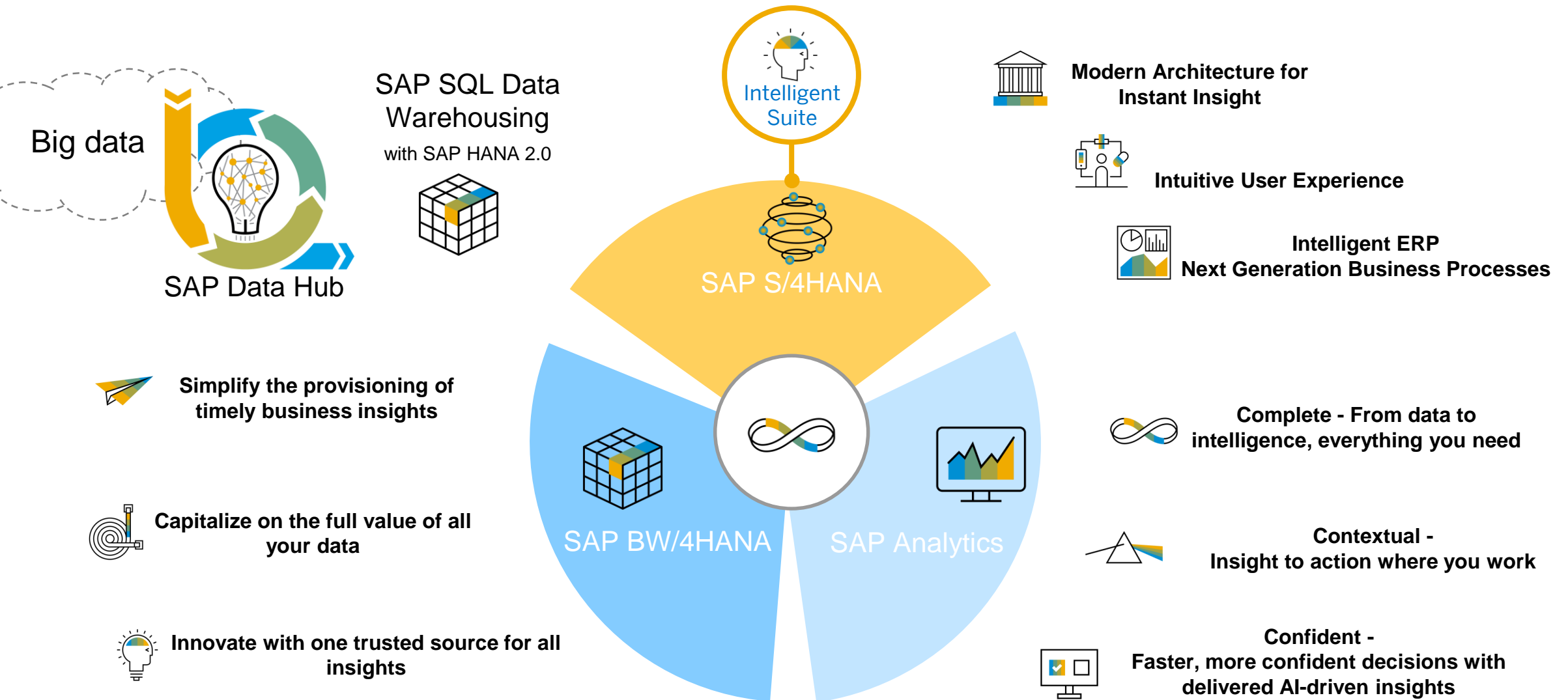
Why is SAP BW/4HANA the perfect EDW for SAP S/4HANA?

- Extends seamlessly the business case of SAP S/4HANA including the integration with SAP Data Hub for Big Data and Internet of Things (IoT) use cases
- Availability of specific business content for SAP S/4HANA
- Allows best integration capabilities based on common architecture and terminology (e.g. analytical engine, currencies, user maintenance, ABAP, transports, governance, ...)



Analytics in the context of SAP S/4HANA

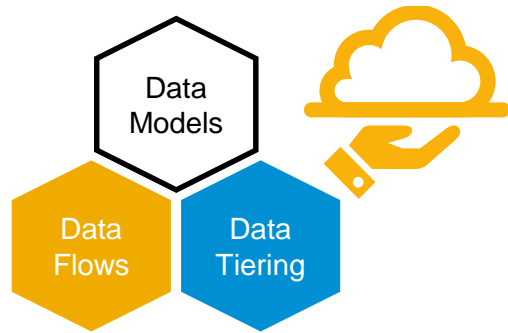
The complete portfolio



SAP BW/4HANA - the Guiding Principles



Simplify the provisioning of timely business insights



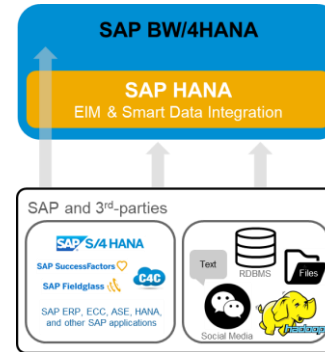
Transform data practices to gain efficiency and agility

Deploy live immediate insights at scale

Get up and running quickly and easily in the cloud



Capitalize on the full value of all your data



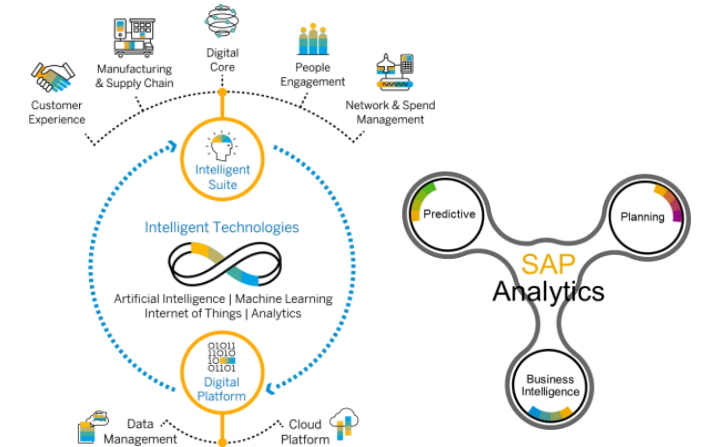
Enable 360° insights across SAP and non-SAP LOB applications

Drive digitization of the business with a true Big Data Warehouse

Leverage modern digital business platform solutions from SAP



Innovate with one trusted source for all insights



Maximize business adoption with modern analytics

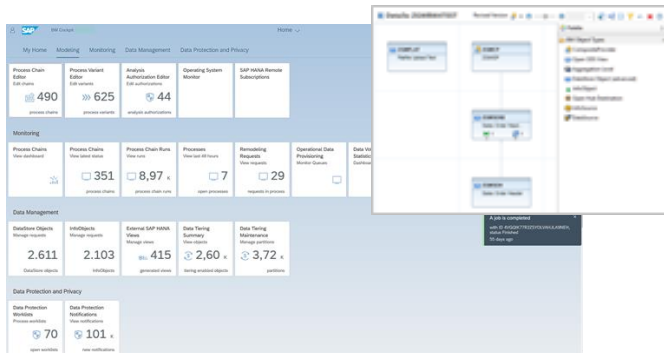
Deliver analytical applications tailored to your unique business requirements

Establish the corporate memory for the Intelligent Enterprise

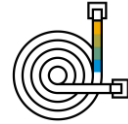
SAP BW/4HANA - the Guiding Principles



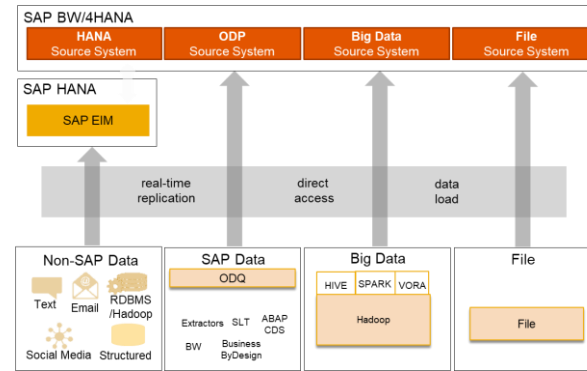
Simplify the provisioning of timely business insights



Impactful reduction of modeling and source objects; choice of field- or InfoObject-based modeling, no data replication between layers needed
 Data tiering for allocating best storage for hot, warm, cold data by partition
 Data processing pushed to SAP HANA from the application server
 Deploy on HEC, AWS, Azure, and GCP



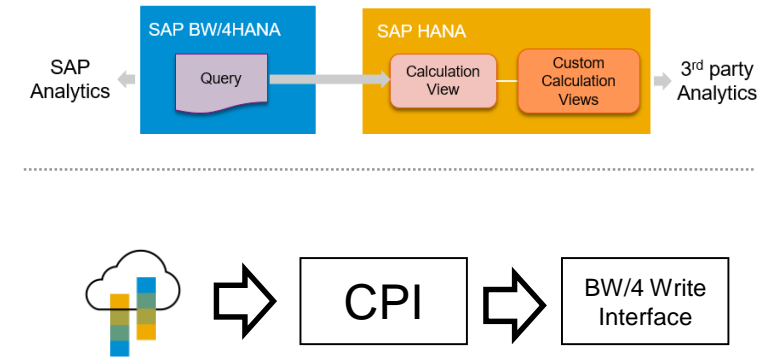
Capitalize on the full value of all your data



Leverages SAP HANA EIM to provide new data provisioning opportunities, like virtual data access, real-time replication, or optimized data load
 Dedicated big data connector to leverage Big Data landscapes for data onboarding and ingestion for various types of data and files
 Deep integration with SAP Data Hub, including SAP Vora, as orchestration and refinery application to address end to end processes with SAP HANA and SAP BW/4HANA

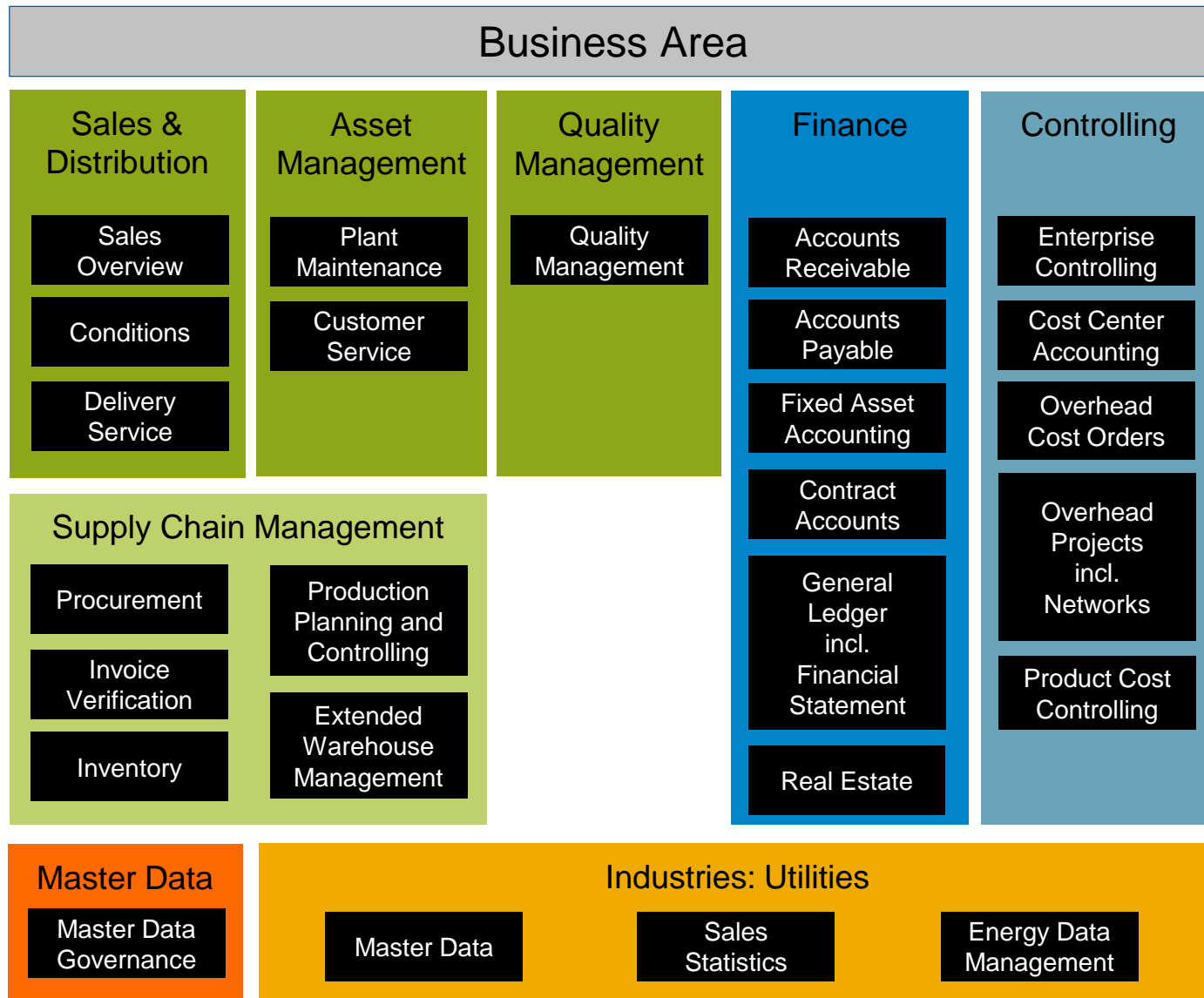


Innovate with one trusted source for all insights



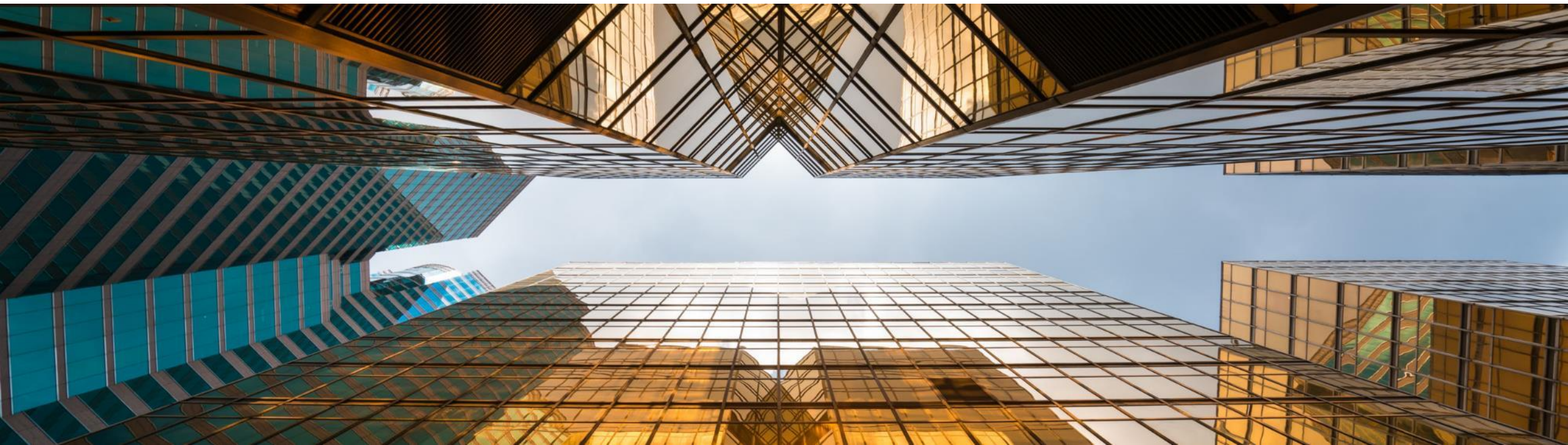
Unique native data access for real-time analytics without replication into the cloud; one platform for enterprise planning & consolidation, Predictive Analytics
 Extend managed DW and native SQL approach for the full power of HANA with mixed scenario and analytical apps
 Establish the corporate memory for the Intelligent Enterprise by leveraging the Cloud Platform Integration API framework

SAP BW/4HANA Business Content: Overview as of SP07



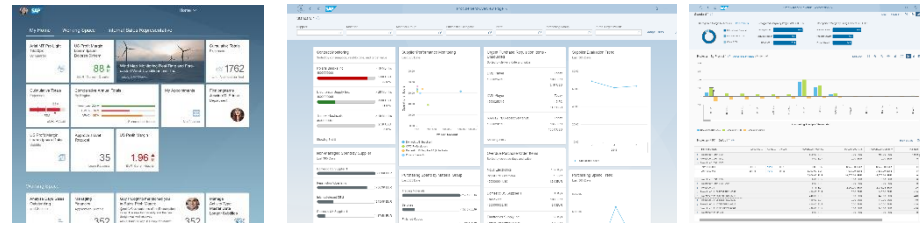
- Supports SAP S/4HANA and SAP ECC systems
- Uses new SAP BW/4HANA features
- Follows the LSA++ architecture
- Delivered content offers more flexibility in data acquisition and reporting
- Provides higher level of detail (line items, ...)
- Quarterly delivery pace

How do the solutions **integrate?**



Analytics with SAP S/4HANA – high level architecture

SAP S/4HANA



Intelligent Technologies



Visualization

SAP Fiori UI
analytical apps, reports, KPIs,... delivered as part of SAP S/4HANA, extensible by the customer

SAP Analytics
access SAP S/4HANA data directly via Transient analytical queries

Access

Odata services

Transient analytical queries

Modelling

ABAP-CDS-Models
(for analytical and transactional purposes)

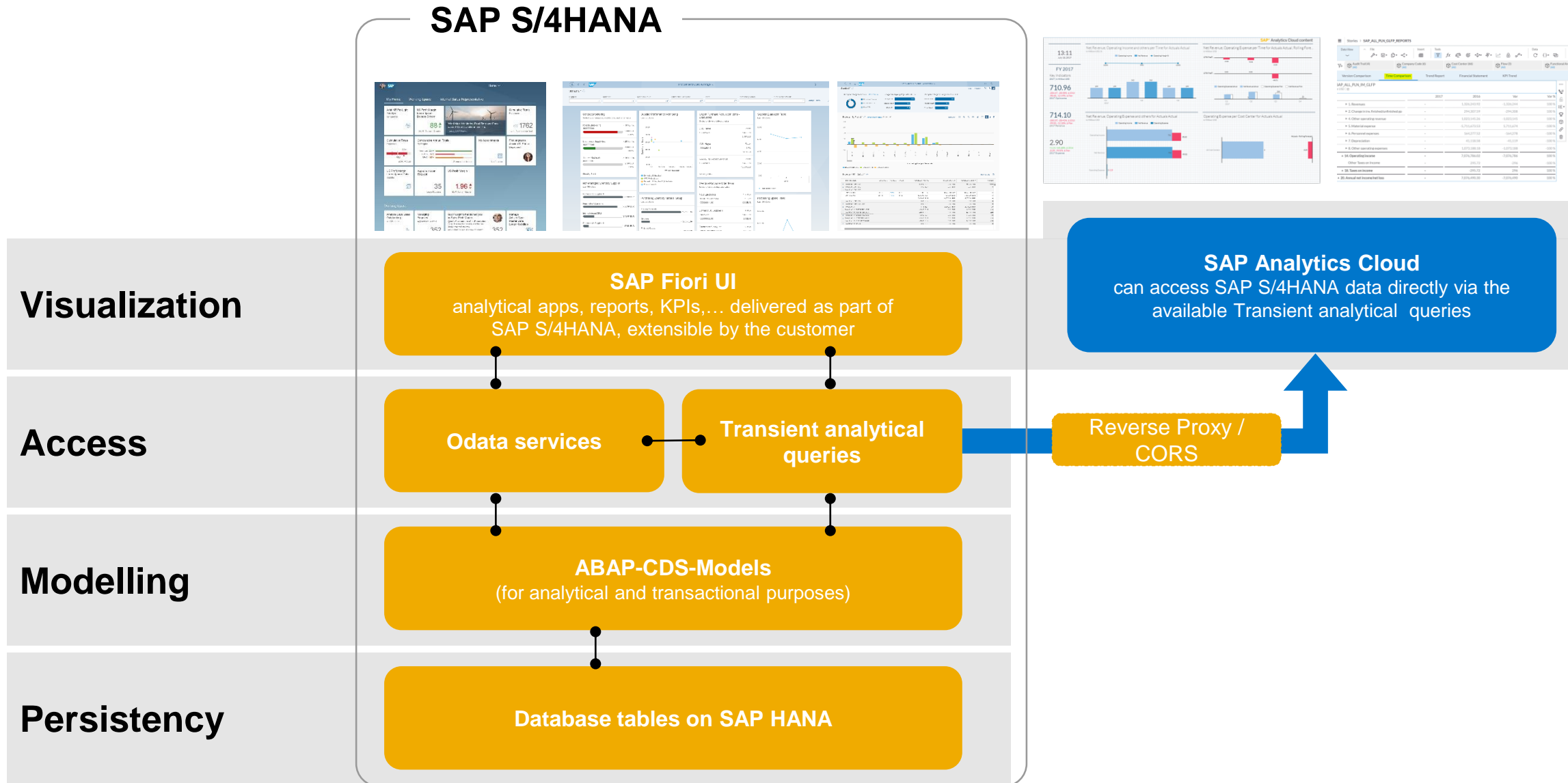
SAP BW/4HANA
(for seamlessly extending transactions with data warehousing workflows)

Persistency

Database tables on SAP HANA

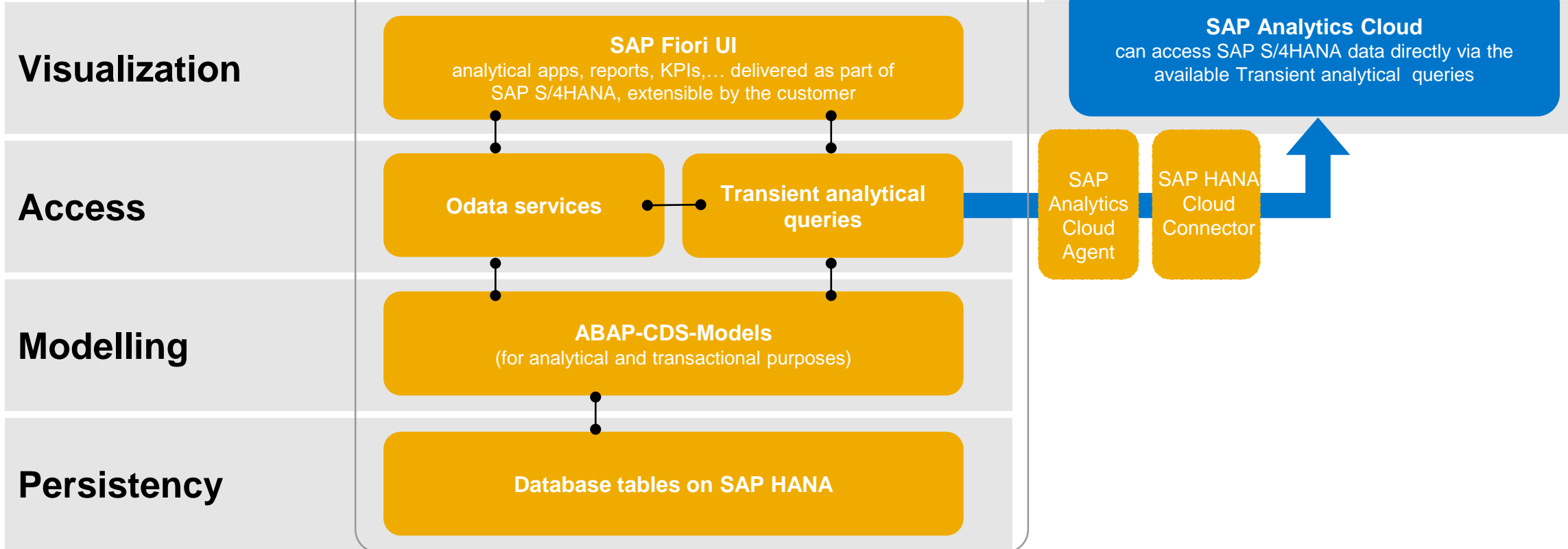
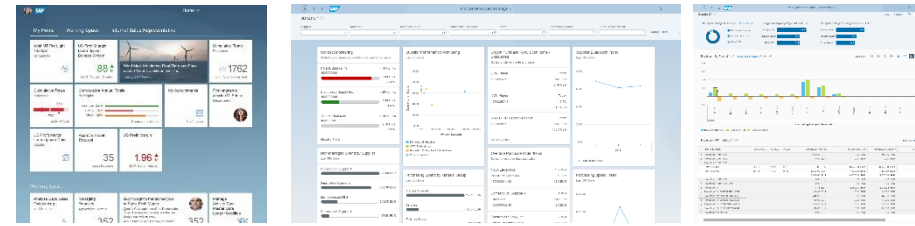
Database tables on SAP HANA

SAP Analytics Cloud Live Data Access – High Level Architecture



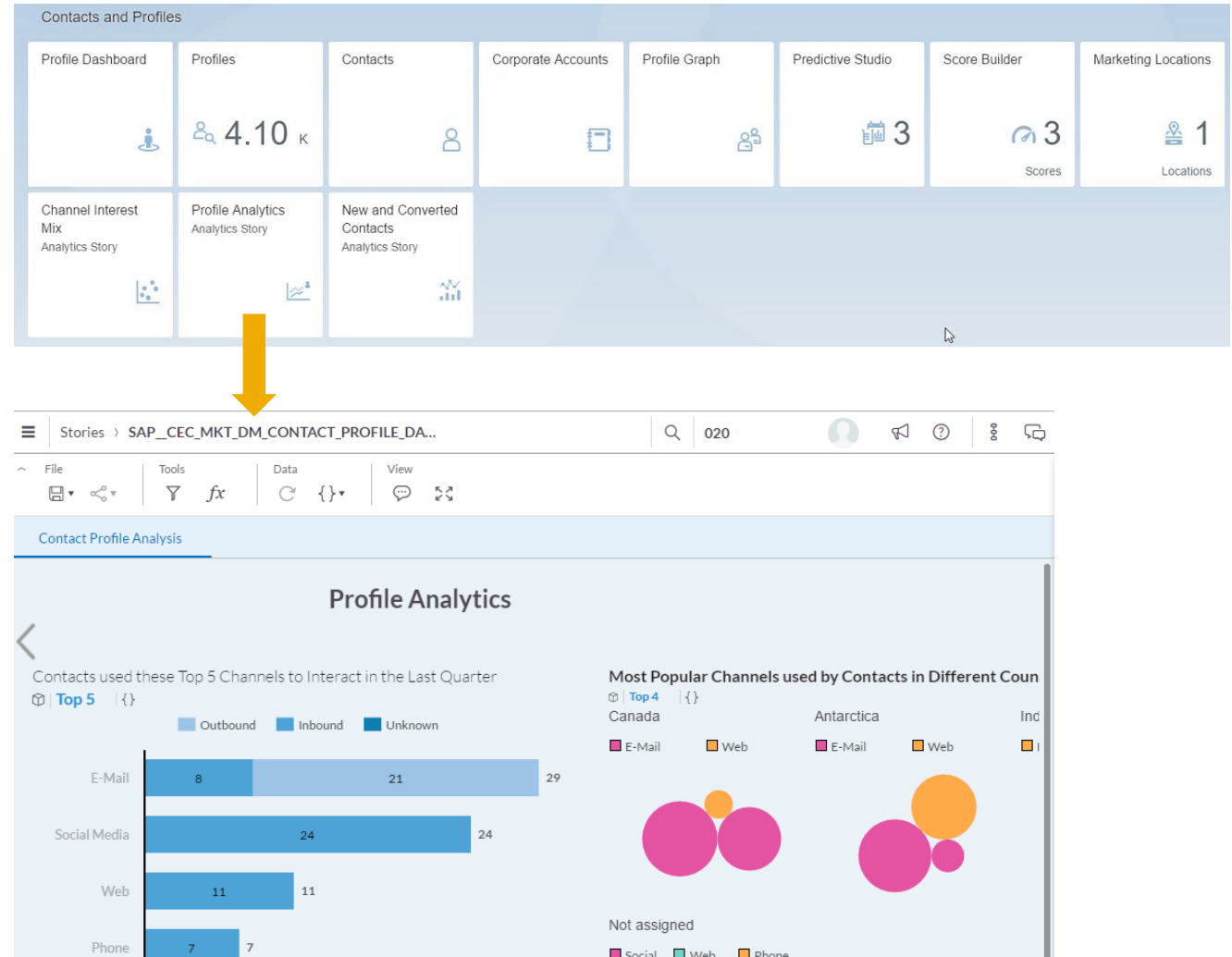
SAP Analytics Cloud Data Import – High Level Architecture

SAP S/4HANA



Integration with SAP Fiori Launchpad

- Open SAP Analytics Cloud Stories from Fiori Launchpad
- Easily create custom Fiori tiles to launch a Story using OAUTH-enabled Story Catalog Service
- Integrate available pre-defined SAP Analytics Cloud Best Practices content with configured Fiori tiles



Path: Content Library > Business Content

	Name	Description	Import
<input type="checkbox"/>	Manufacturing for SAP S/4HANA Cloud (SAP Best Practic...	Content for SAP Best Practice: Manufacturing for SAP S/4HANA ...	✓
<input type="checkbox"/>	Retail for SAP S/4HANA (SAP Best Practices)	Content for SAP Best Practice: Retail for SAP S/4HANA	
<input type="checkbox"/>	Financial Consolidation for SAP S/4HANA Cloud (SAP Bes...	Content for SAP Best Practice: Financial Consolidation for SAP S/...	✓
<input type="checkbox"/>	Procurement for SAP S/4HANA Cloud (SAP Best Practices)	Content for SAP Best Practice: Procurement for SAP S/4HANA CI...	✓
<input type="checkbox"/>	Professional Services for SAP S/4HANA Cloud (SAP Best P...	Content for SAP Best Practice: Professional Services for SAP S/4...	✓
<input type="checkbox"/>	Financial Planning & Analysis for SAP S/4HANA Cloud (SA...	Content for SAP Best Practice: Financial Planning & Analysis for S...	✓

All Types

Search



Procurement for SAP S/4HANA Cloud (SAP Best Practices)

3 sec ago



SAP Analytics Cloud is embedded in SAP S/4HANA!*

*labs preview

Embedded SAC Story in S/4HANA

Sample: Summary Q1 (2014) – Q4 (2016)
 This page outlines sales for the fictional company "The Best Run Juice Company". Feel free to click around and explore the data!

KPIs (in Million USD):
 Gross Margin: 28.47%
 Net Revenue: 820.50

Gross Margin % by State:

State	Gross Margin %
California	24.52
Nevada	12.88
Oregon	16.13

Average gross margin by State:

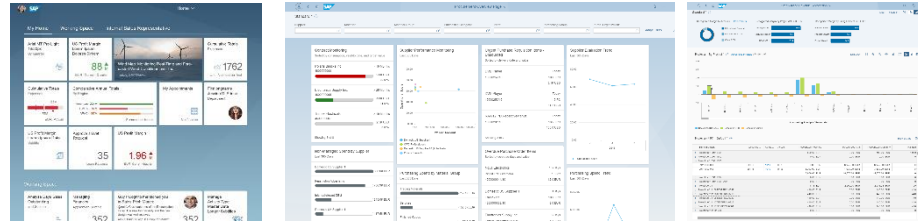
State	Average gross margin
California	24.43
Nevada	13.20

Supplier List:

Supplier	Name Of Supplier	Address
Hans Brenner (1)	Hans Brenner	Wald 1, 11111 Köln, Germany
Heisenberg Org. (7)	Heisenberg Org.	House Street, 560066 bangalore, India
G.H.Varley A (11)	G.H.Varley A	NSW 2322, Australia
G.H.Varley (12)	G.H.Varley	NSW 2322, Australia
G.H.Varley (14)	G.H.Varley	NSW 2322, Australia
APPLE INC (51)	APPLE INC	560097 BANGALORE, India
test (56)	test	123456 Bangalore, India
NEW_NAME1 (70)	NEW_NAME1	110027 PATNA, India
NEW_NAME1 (72)	NEW_NAME1	110027 PATNA, India
test2 (73)	test2	560066 Bangalore2, India
test2 (74)	test2	560066 Bangalore2, India
test2 (75)	test2	560066 Bangalore2, India
test2 (76)	test2	560066 Bangalore, India

Analytics with SAP S/4HANA – high level architecture

SAP S/4HANA



Intelligent Technologies



Visualization

SAP Fiori UI
analytical apps, reports, KPIs,... delivered as part of SAP S/4HANA, extensible by the customer

SAP Analytics
access SAP S/4HANA data directly via Transient analytical queries

Access

Odata services

Transient analytical queries

Modelling

ABAP-CDS-Models
(for analytical and transactional purposes)

SAP BW/4HANA
(for seamlessly extending transactions with data warehousing workflows)

Persistency

Database tables on SAP HANA

Database tables on SAP HANA

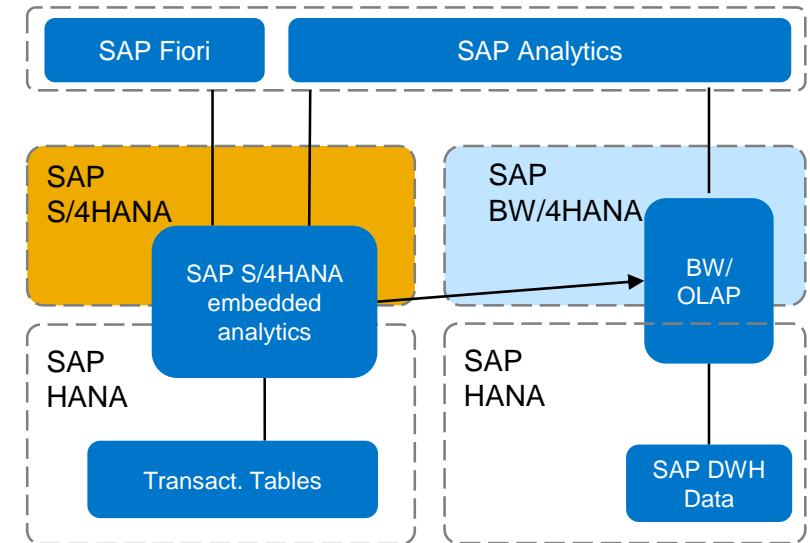
SAP BW/4HANA and SAP S/4HANA

Leveraging **SAP BW/4HANA** you can **natively integrate** the embedded analytics models and data in SAP S/4HANA with those of an EDW, e.g. to compare real-time actuals with historical snapshots, planning results (from BPC), or external data.

Please refer to the respective [integration blog](#) and [How-to-Guide](#) on www.sap.com for further details.

Examples for best-in-class integration are:

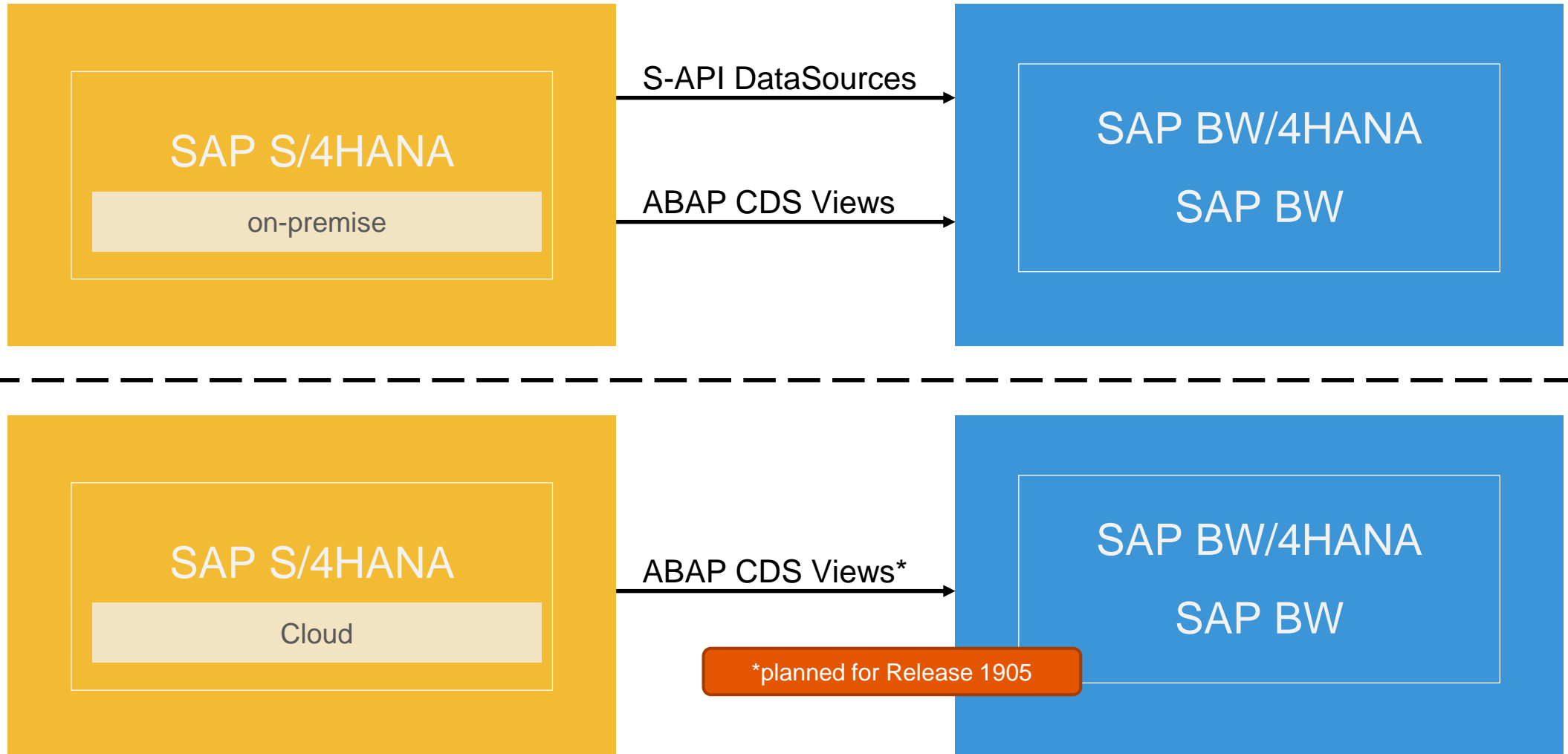
- **Out-of-the-box connectivity**
 - Visualize SAP S/4HANA data in SAP BW/4HANA without data structure creation in SAP BW/4HANA
 - Standard Extractors (ABAP CDS and ABAP via S-API), as well as open extensibility
- **Fast time-to-value Data Mashups using SAP BW/4HANA-native objects (composite providers etc.)**
- **Strong data historization capabilities (e.g. easy tracking of slowly changing dimensions)**
- **Best integrated planning use cases based on all necessary existing and harmonized data**



Embedded BW:

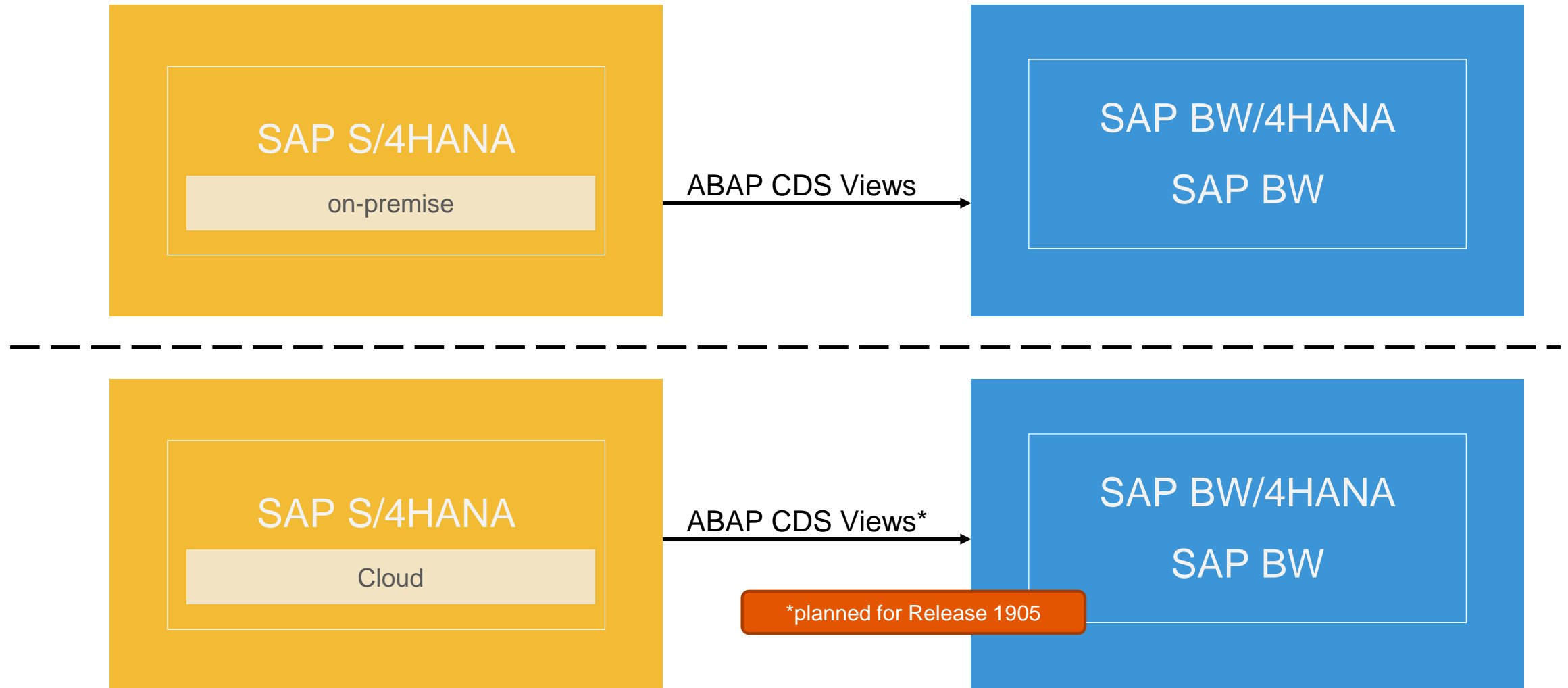
- SAP does **not** recommend using Embedded BW for data warehouse (EDW) use cases!
- For details, see [SAP Community blog](#) and [SAP note 1661202](#), (e.g. Upgrades and patches, Resource allocation and capacity planning, Workload Management, Backup & Recovery, Lifecycle management, High Availability & Disaster Recovery, Security etc.)
- Best practice: The amount of data persisted in the Embedded BW should not exceed 20% of the overall data volume of the system.
- Embedded BW is not an SAP BW/4HANA
- More information [here](#).

CDS-based Extraction to SAP Business Warehouse



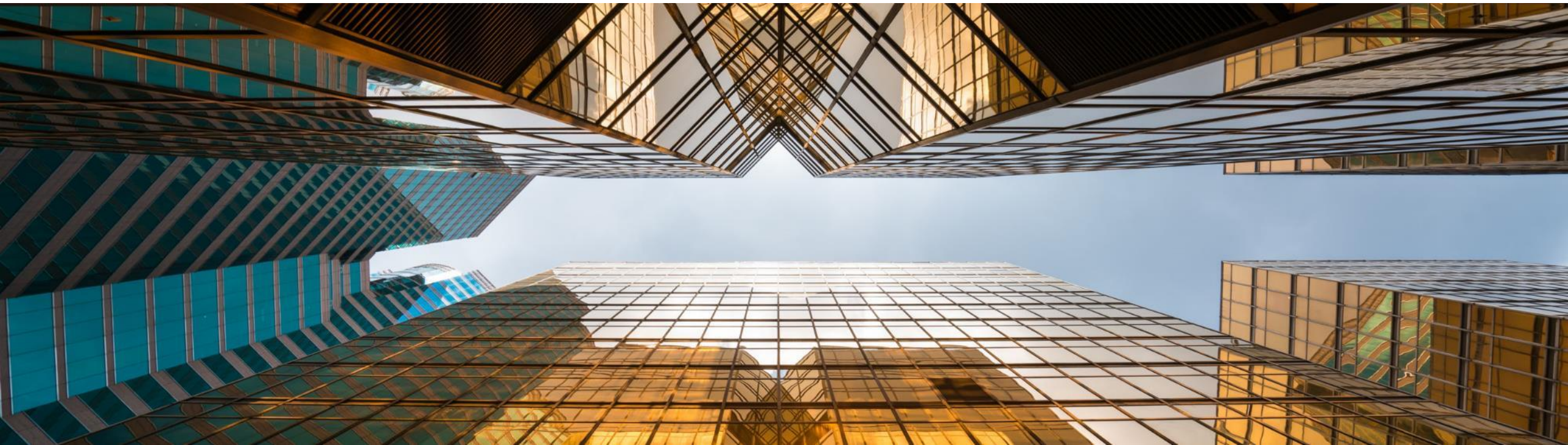
- For limitations on S-API DataSources (Extractors) in S/4HANA see [SAP Note 2500202](#)
- [How to use ABAP CDS for Data Provisioning in BW](#)
- For release of extractors for ODP see [SAP Note 2232584](#) 'Release SAP Extractors for Operational Data Provisioning' (> 95% are released)

CDS-based Data Federation with SAP Business Warehouse



Direct access to SQL views (generated by ABAP CDS) **not** recommended! See [note 2511210](#) for further details.

What to consider on your route to Analytics with SAP S/4HANA?



Planning the migration from SAP ECC with SAP BW to SAP S/4HANA with BW/4HANA

Check
SAP BW
Status Quo

Check
Status quo
BI/Analytics

What to do
where?

Check SAP
S/4HANA

Rebuild
and
Extend

*Prerequisite: SAP BW/4HANA Sandbox existing

Planning the migration from SAP ECC with SAP BW to SAP S/4HANA with BW/4HANA



Check/test existing and used BW setup and extractors
What is still working (functional fit and/or SAP supported content)*?
Which frontends have been created using the BEx?
Do housekeeping! What is still necessary?

Establish the status quo of BI/Analytics
Have data sources changed?
Does Big Data play a role?
Do housekeeping! What is still necessary?

Separate analytical requirements (along the business processes) between the operational system, the BI/Analytics layer and the EDW.
Explore how a target architecture would look like ideally using SAP S/4HANA, SAP BW/4HANA, and SAP Analytics BI/PA/Planning.

For pure operational analytical requirements:
Check existing content, applications and capabilities in SAP S/4HANA embedded analytics. See what you can do out-of-the-box.
For all analytical requirements, check Business Content in SAP Analytics and SAP BW/4HANA.

Plan detailed steps to implement all remaining analytical requirements (e.g. by extending SAP S/4HANA, or by exceptional usage of SAP Analytics Cloud and SAP BW/4HANA for operational reporting) - your choices need to be based on project realities (e.g. individual preferences, strategy, efforts, available functionality)

*Prerequisite: SAP BW/4HANA Sandbox existing

Now: what to do where?

SAP BW/4HANA – Core EDW functions

- Data replication (for Snapshots, Performance enhancements)
- Enterprise-wide data harmonization
- Data governance
- Data federation/mashing (EDW)
- LSA modeling
- SAP and non-SAP data
- Planning
- Archiving (for delta comparison)

SAP Analytics Cloud

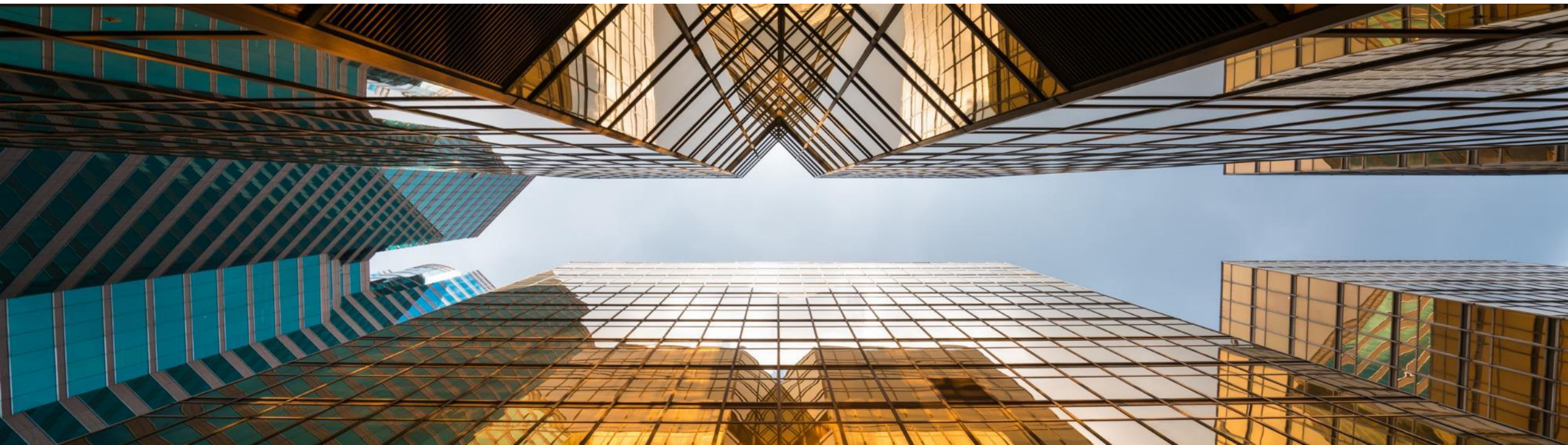
- Best visualization
- Focus on cloud-based source systems (e.g. SAP S/4HANA Cloud, MTE)
- Data federation/mashing (without EDW harmonization)
- SAP and non-SAP data
- Planning
- Self Service BI

SAP S/4HANA embedded analytics

- Operational data
- Real-time data access
- Transactional decision support
- KPI-driven process handling

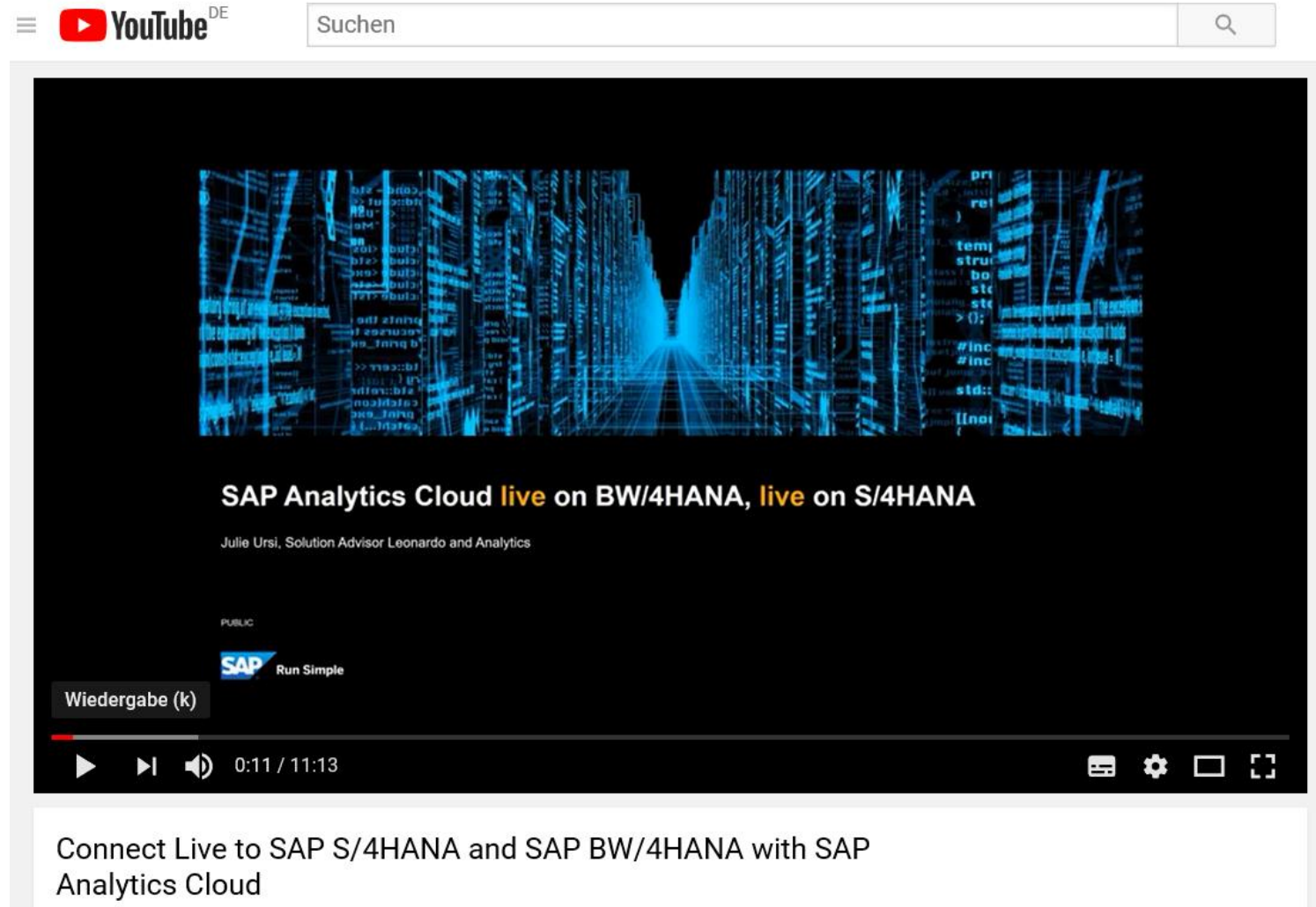


Summary



Demo (Full Integration)

<https://www.youtube.com/watch?v=nuc29Zy4U6Y&feature=youtu.be>



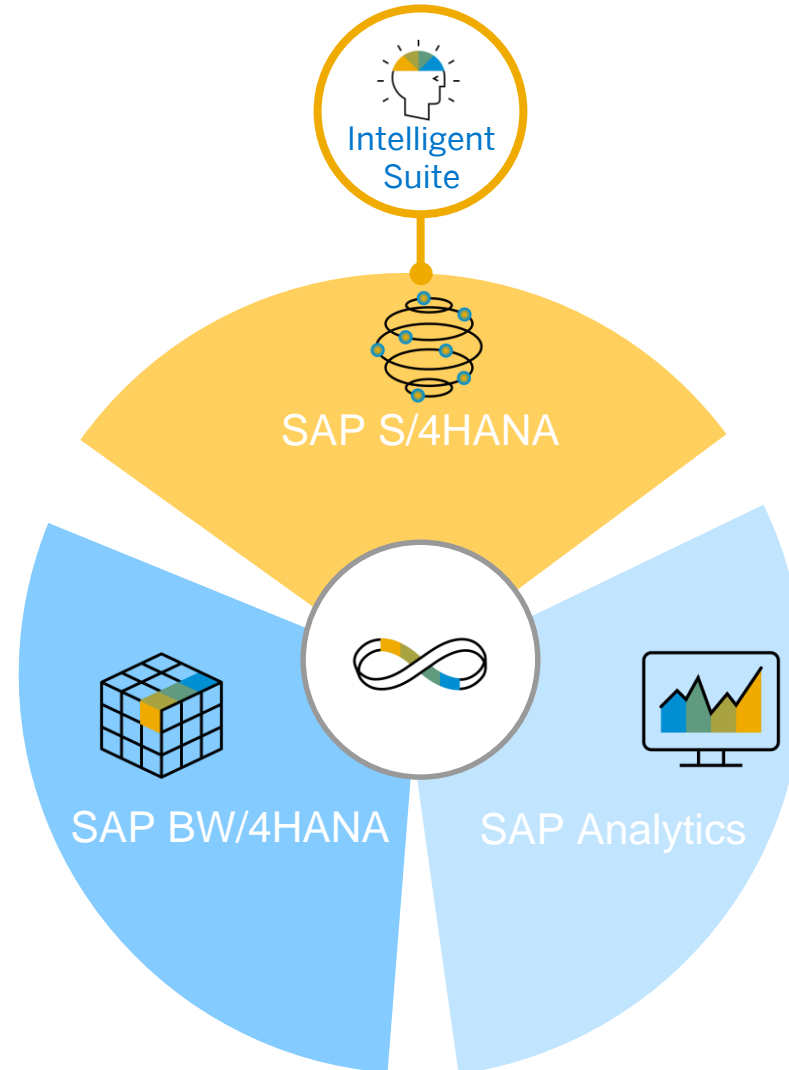
The image shows a YouTube video player interface. At the top, there is a search bar with the text "Suchen" and a magnifying glass icon. The video player itself displays a blue, digital-themed background with code snippets. Below the video, the title "SAP Analytics Cloud **live** on BW/4HANA, **live** on S/4HANA" is shown in white text. Underneath the title, the name "Julie Ursi, Solution Advisor Leonardo and Analytics" is listed. The video is marked as "PUBLIC" and features the SAP logo with the tagline "Run Simple". A play button icon is visible, along with the text "Wiedergabe (k)". The video progress bar shows "0:11 / 11:13". At the bottom of the player, there are icons for play, next, volume, and full screen. Below the video player, the text "Connect Live to SAP S/4HANA and SAP BW/4HANA with SAP Analytics Cloud" is displayed.

Analytics in the context of SAP S/4HANA

The complete portfolio



SAP SQL Data
Warehousing
with SAP HANA 2.0



Blogs

What is SAP S/4HANA embedded analytics? How does it add value?
<http://bit.ly/2cPkeqF>

How do I get started with embedded analytics?
<http://scn.sap.com/community/s4hana/blog/2016/05/27/getting-started-with-s4-hana-embedded-analytics>

How does the SAP S/4HANA embedded analytics architecture look like?
<http://scn.sap.com/community/s4hana/blog/2016/09/27/journey-of-datafrom-tables-to-tiles--a-sneak-peek-into-the-s4-hana-embedded-analytics-architecture>

SAP S/4HANA Extensibility
<https://blogs.sap.com/2017/03/01/scn-s4hana-extensibility-scenario-diagrams/>

Embedding Predictive Analytics into SAP S/4HANA Cloud
<https://blogs.sap.com/2017/05/16/embedding-predictive-analytics-into-sap-s4hana/>

SAP S/4HANA and SAP BW/4HANA positioning
<https://blogs.sap.com/2017/08/15/sap-s4hana-and-sap-bw4hana-what-to-do-where/>

openSAP

[Extending SAP S/4HANA Cloud and SAP S/4HANA](#)

Youtube

[SAP S/4HANA Cloud](#)

[Analysis Path Framework](#)

Fiori Apps Library

<https://fioriappslibrary.hana.ondemand.com/sap/fix/externalViewer/>

Documentation

[SAP S/4HANA](#)

[SAP S/4HANA Cloud](#)

Customize and use SAP S/4HANA embedded analytics!

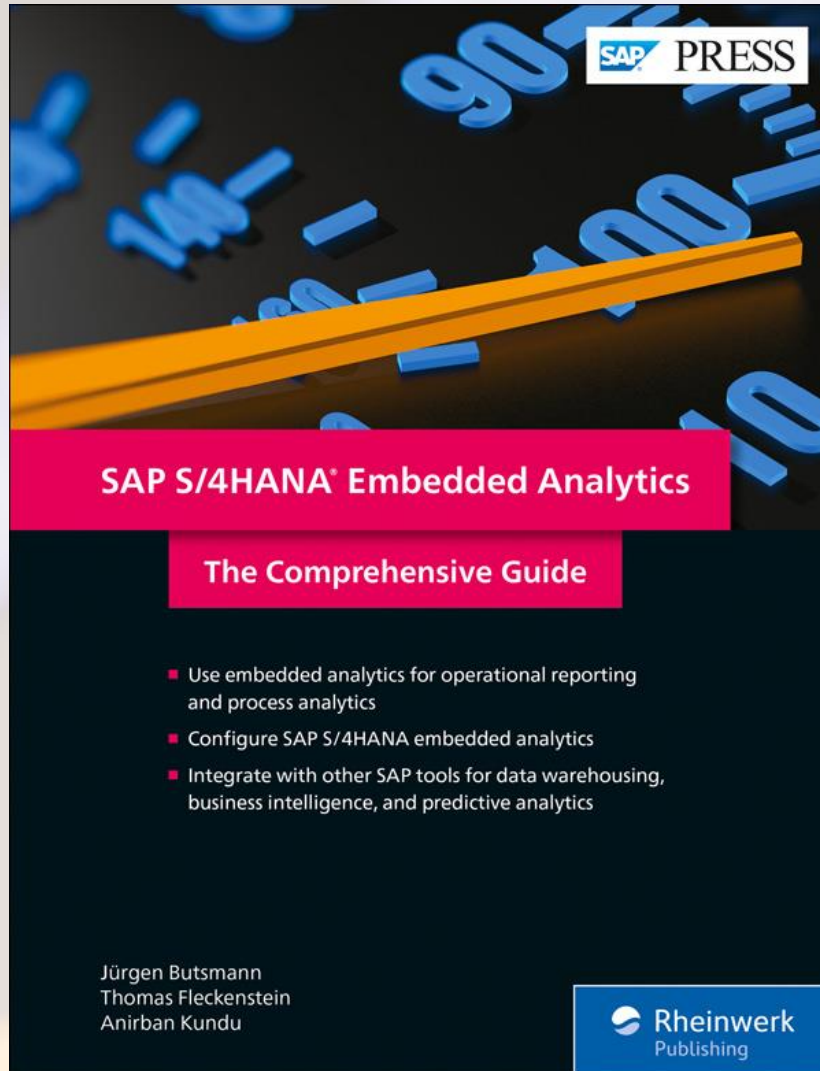
- Configure SAP S/4HANA embedded analytics for your landscape
- Use embedded analytics for operational reporting and process analytics
- Integrate with other SAP tools for data warehousing, business intelligence, and predictive analytics

Purchase the print or e-book at sap-press.com/4690

SAP S/4HANA Embedded Analytics: The Comprehensive Guide

Written by: Jürgen Butsmann, Thomas Fleckenstein, Anirban Kundu

430 pages | 09/2018 | **E-book:** \$69.99 | **Print:** \$79.95 | **Bundle:** \$89.99



Customize and use SAP S/4HANA embedded analytics!

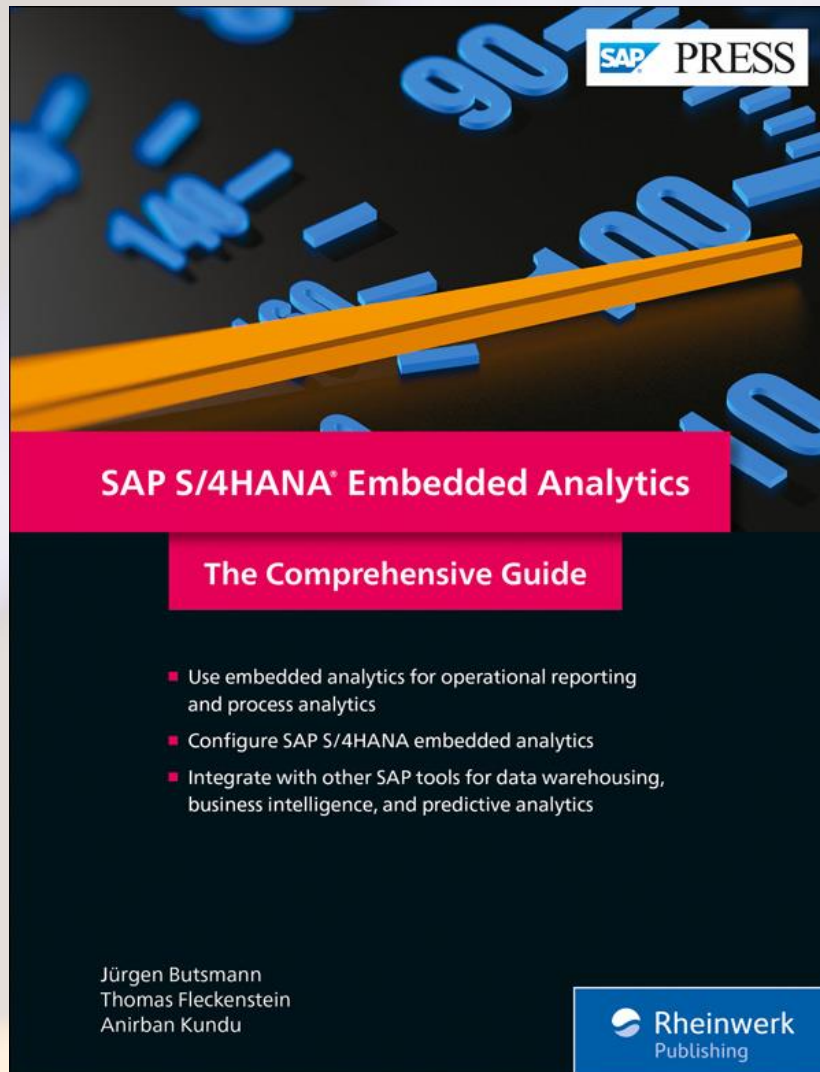
- Configure SAP S/4HANA embedded analytics for your landscape
- Use embedded analytics for operational reporting and process analytics
- Integrate with other SAP tools for data warehousing, business intelligence, and predictive analytics

Save **15%** off the print price and get the e-book for **FREE!**
Purchase today at the **SAP PRESS** booth.

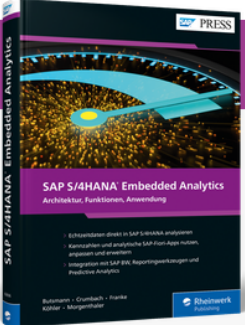
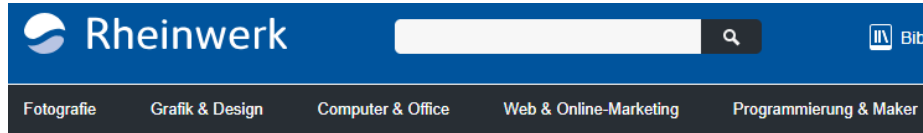
SAP S/4HANA Embedded Analytics: The Comprehensive Guide

Written by: Jürgen Butsmann, Thomas Fleckenstein, Anirban Kundu

430 pages | 09/2018 | **E-book:** \$69.99 | **Print:** \$79.95 | **Bundle:** \$89.99



Seit 26.4.2019



Echtzeitdaten-Auswertung direkt in SAP S/4HANA

SAP S/4HANA Embedded Analytics

Architektur, Funktionen, Anwendung
von Jürgen Butsmann, Manfred Crumbach, Jörg Franke, Benjamin Köhler, Jan Morgenthaler

- Buch **€ 79,90** Sofort lieferbar
- E-Book **€ 74,90** Sofort verfügbar
- Bundle Buch + E-Book **nur € 84,90** Sofort verfügbar

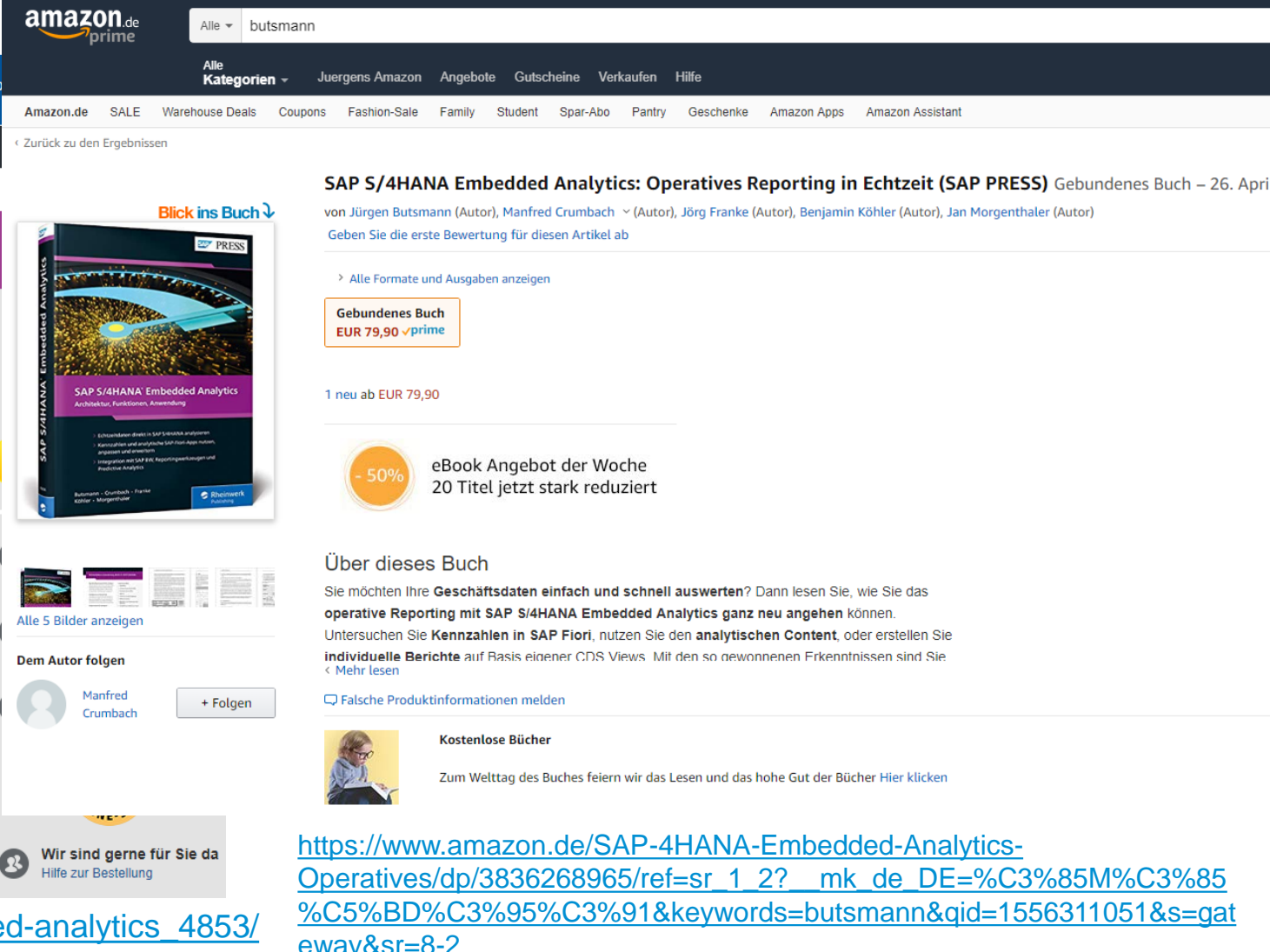
411 Seiten, 2019, gebunden
SAP PRESS, ISBN 978-3-8362-6896-7

[Leseprobe \(PDF\)](#)

Sie möchten Ihre Geschäftsdaten einfach und schnell auswerten? Dann lesen Sie in diesem Buch, wie Sie das operative Reporting mit SAP S/4HANA Embedded Analytics ganz neu angehen können. Untersuchen Sie relevante Kennzahlen in SAP-Fiori-Apps, nutzen Sie den vordefinierten analytischen Content, oder erstellen Sie individuelle Berichte auf Basis eigener CDS Views. Mit den so gewonnenen Erkenntnissen sind Sie der Konkurrenz immer einen Schritt voraus!

- Aussagekräftige Analysen von Echtzeitdaten direkt in SAP S/4HANA
- Kennzahlen und analytische Fiori-Apps nutzen, anpassen und erweitern
- Integration mit SAP BW, Reportingwerkzeugen und Predictive Analytics

https://www.rheinwerk-verlag.de/sap-s4hana-embedded-analytics_4853/



amazon.de prime

Alle Kategorien

SAP S/4HANA Embedded Analytics: Operatives Reporting in Echtzeit (SAP PRESS)

Gebundenes Buch – 26. April

von Jürgen Butsmann (Autor), Manfred Crumbach (Autor), Jörg Franke (Autor), Benjamin Köhler (Autor), Jan Morgenthaler (Autor)

Geben Sie die erste Bewertung für diesen Artikel ab

Alle Formate und Ausgaben anzeigen

Gebundenes Buch
EUR 79,90 ✓prime

1 neu ab EUR 79,90

- 50% eBook Angebot der Woche
20 Titel jetzt stark reduziert

Über dieses Buch

Sie möchten Ihre **Geschäftsdaten einfach und schnell auswerten**? Dann lesen Sie, wie Sie das **operative Reporting mit SAP S/4HANA Embedded Analytics ganz neu angehen** können. Untersuchen Sie **Kennzahlen in SAP Fiori**, nutzen Sie den **analytischen Content**, oder erstellen Sie **individuelle Berichte** auf Basis eigener CDS Views. Mit den so gewonnenen Erkenntnissen sind Sie **der Konkurrenz immer einen Schritt voraus!**

[Falsche Produktinformationen melden](#)

Kostenlose Bücher
Zum Welttag des Buches feiern wir das Lesen und das hohe Gut der Bücher [Hier klicken](#)

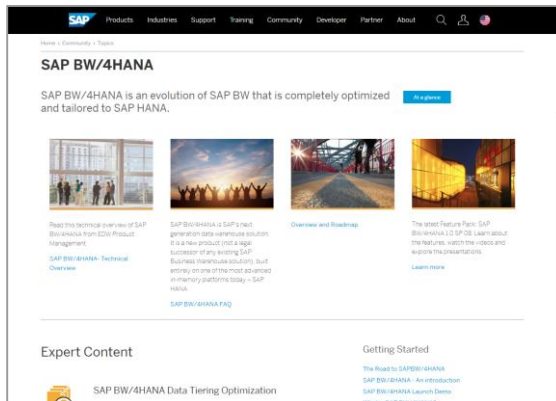
https://www.amazon.de/SAP-4HANA-Embedded-Analytics-Operatives/dp/3836268965/ref=sr_1_2?_mk_de_DE=%C3%85M%C3%85%C5%BD%C3%95%C3%91&keywords=butsmann&qid=1556311051&s=gateway&sr=8-2



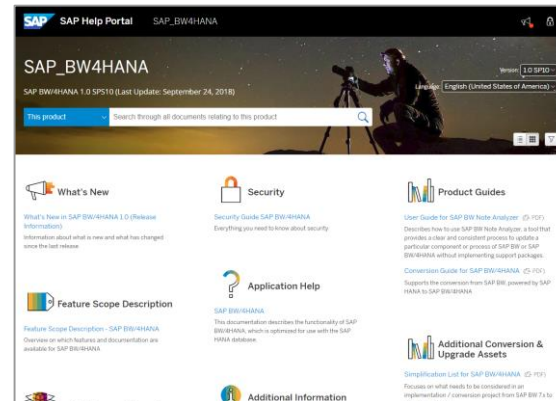
SAP BW/4HANA



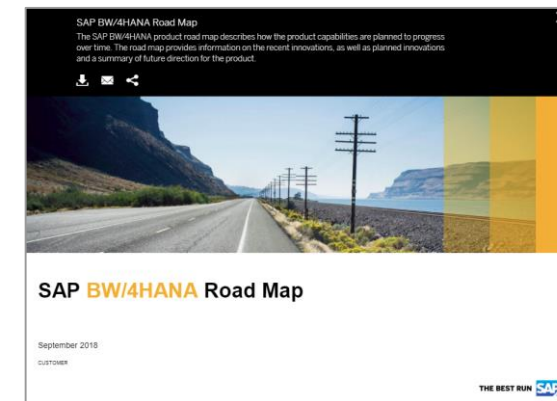
Home Page
<https://sap.com/bw4hana>



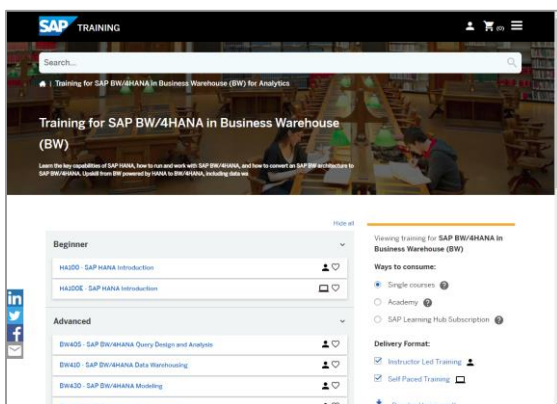
Community / Product Page
<https://sap.com/bw4hana10>



Documentation
<https://help.sap.com/bw4hana20>



Product Roadmap
<https://sap.com/roadmaps>



Training & Certification
<https://training.sap.com/>

Get Started
[Free Learning @ openSAP](#), [Free Trial](#)
Get Help
[FAQ](#), [Q&A](#), [Community Wiki](#), [Support](#), [Availability](#)



Read & Learn More
[SAP Blogs](#), [Community Blogs](#), [Learning Journey](#)
Transition from SAP BW
[Blog](#), [SAP Activate Roadmap](#), [SAP Readiness Check](#)

Related Solutions
[SAP HANA](#), [SAP Data Hub](#), [SAP Analytics Cloud](#)



Watch
[Demos & Tutorials](#),
[YouTube Channel](#),
[SAP HANA Academy](#)



Share & Follow
[#BW4HANA](#),
[#TheFutureofDW](#)



SAP Analytics Cloud

Product

Solutions

Plans

Learning

Partners

Log In

Try it free



Experience the Future of Decision Making

From financial planning to sales and marketing, SAP Analytics Cloud helps businesses make end-to-end decisions with confidence.

Start your free 30-day trial



<https://www.sapanalytics.cloud/>

Thank you!

Contact information:

Jürgen Butsmann

Solution Management SAP S/4HANA

SAP SE

Juergen.Butsmann@sap.com

Take the Session Survey.

We want to hear from you! Be sure to complete the session evaluation on the SAPPHIRE NOW and ASUG Annual Conference mobile app.



Presentation Materials

Access the slides from 2019 ASUG Annual Conference here:

<http://info.asug.com/2019-ac-slides>

Q&A

For questions after this session, contact us at Juergen.Butsmann@sap.com.

Let's Be Social.

Stay connected. Share your SAP experiences anytime, anywhere.

Join the ASUG conversation on social media: **@ASUG365 #ASUG**

