



SAP Business Rule Technologies: When to Use What and How They Work Together

Peter McNulty , Venugopal Chembrakalathil / SAP
May 7, 2019

PUBLIC

Disclaimer

The information in this presentation is confidential and proprietary to SAP and may not be disclosed without the permission of SAP. Except for your obligation to protect confidential information, this presentation is not subject to your license agreement or any other service or subscription agreement with SAP. SAP has no obligation to pursue any course of business outlined in this presentation or any related document, or to develop or release any functionality mentioned therein.

This presentation, or any related document and SAP's strategy and possible future developments, products and or platforms directions and functionality are all subject to change and may be changed by SAP at any time for any reason without notice. The information in this presentation is not a commitment, promise or legal obligation to deliver any material, code or functionality. This presentation is provided without a warranty of any kind, either express or implied, including but not limited to, the implied warranties of merchantability, fitness for a particular purpose, or non-infringement. This presentation is for informational purposes and may not be incorporated into a contract. SAP assumes no responsibility for errors or omissions in this presentation, except if such damages were caused by SAP's intentional or gross negligence.

All forward-looking statements are subject to various risks and uncertainties that could cause actual results to differ materially from expectations. Readers are cautioned not to place undue reliance on these forward-looking statements, which speak only as of their dates, and they should not be relied upon in making purchasing decisions.

Agenda

Intelligent Enterprise

Decision Management Overview

SAP Cloud Platform Business Rules Introduction

Key Capabilities

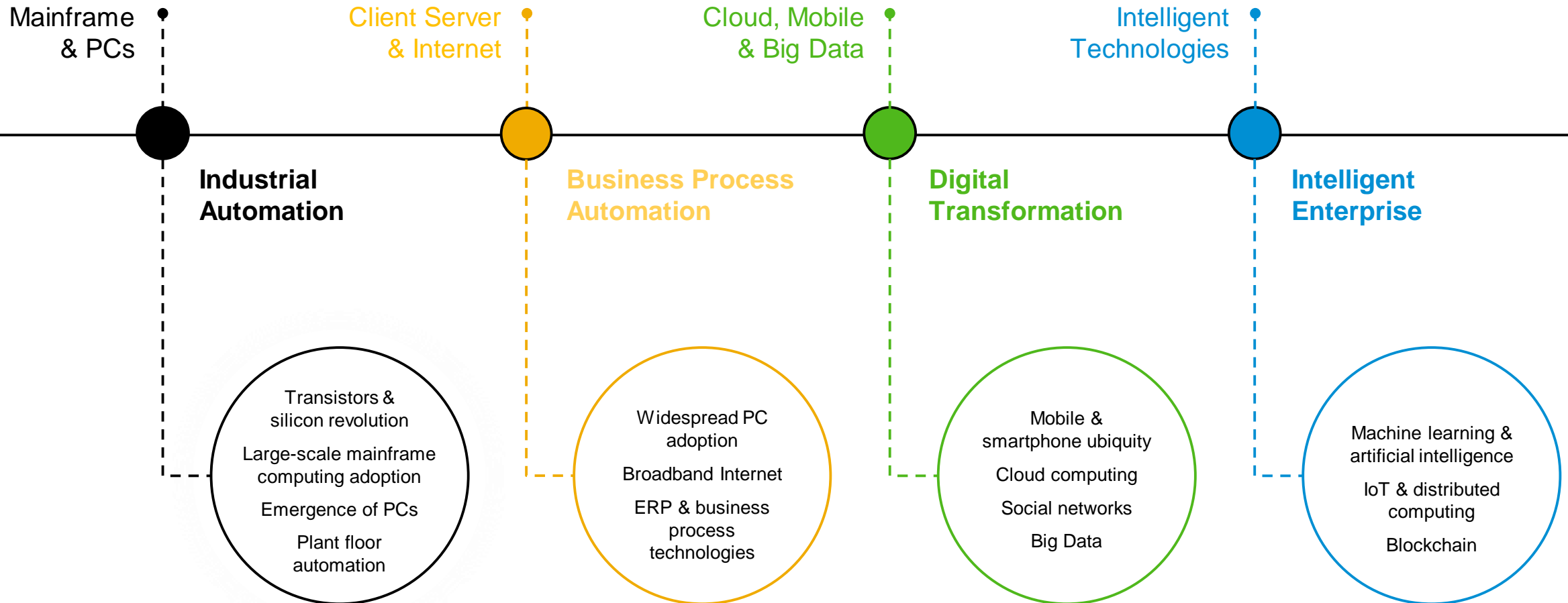
Recipes

Summary

Intelligent Enterprise

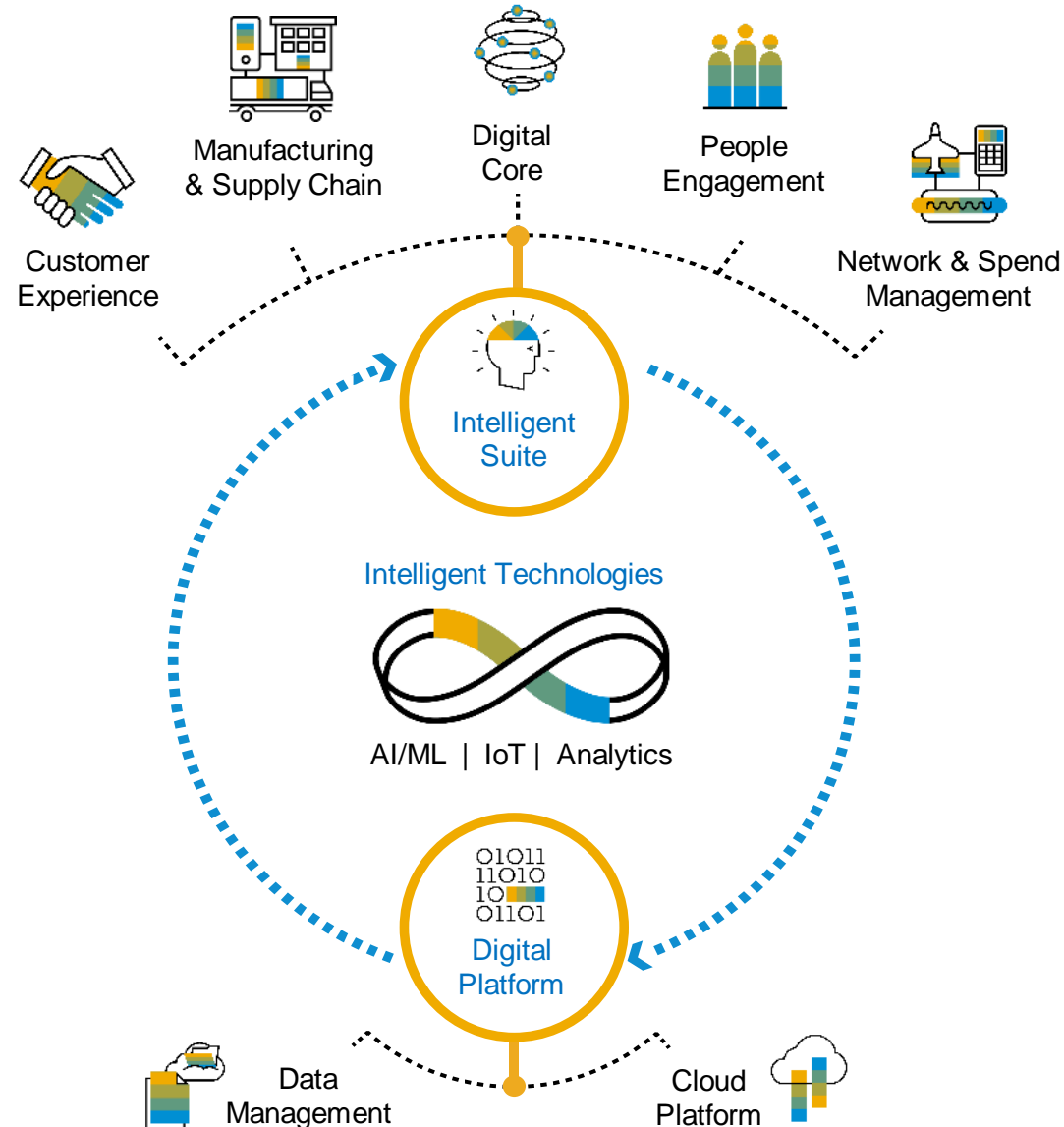


The digital era is evolving into the intelligence era



Deliver the Intelligent Enterprise

THE INTELLIGENT ENTERPRISE features 3 KEY COMPONENTS:



1 Intelligent Suite

2 Digital Platform

3 Intelligent Technologies

Integration & Orchestration services in SAP Cloud Platform

Supported customers scenarios



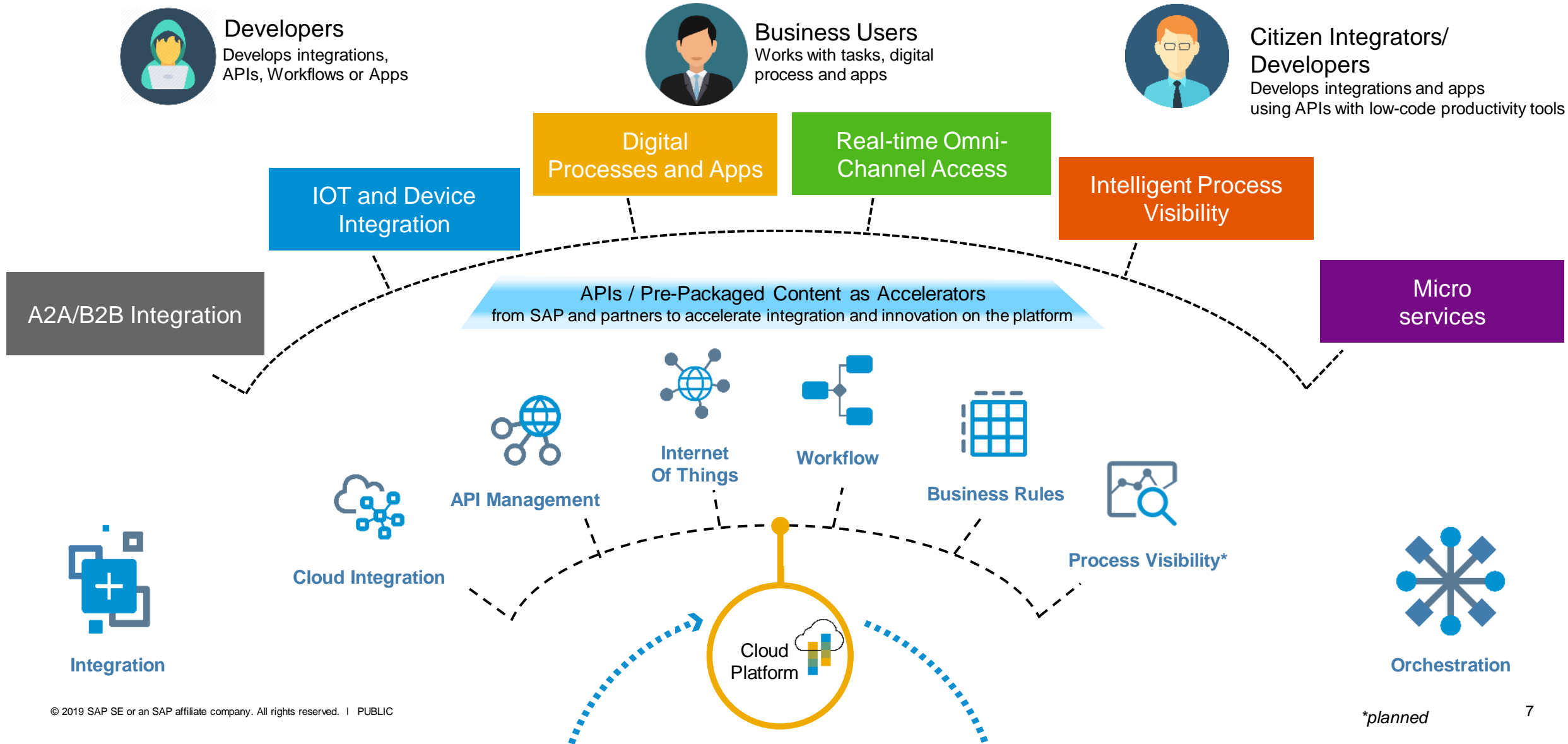
Developers
Develops integrations, APIs, Workflows or Apps



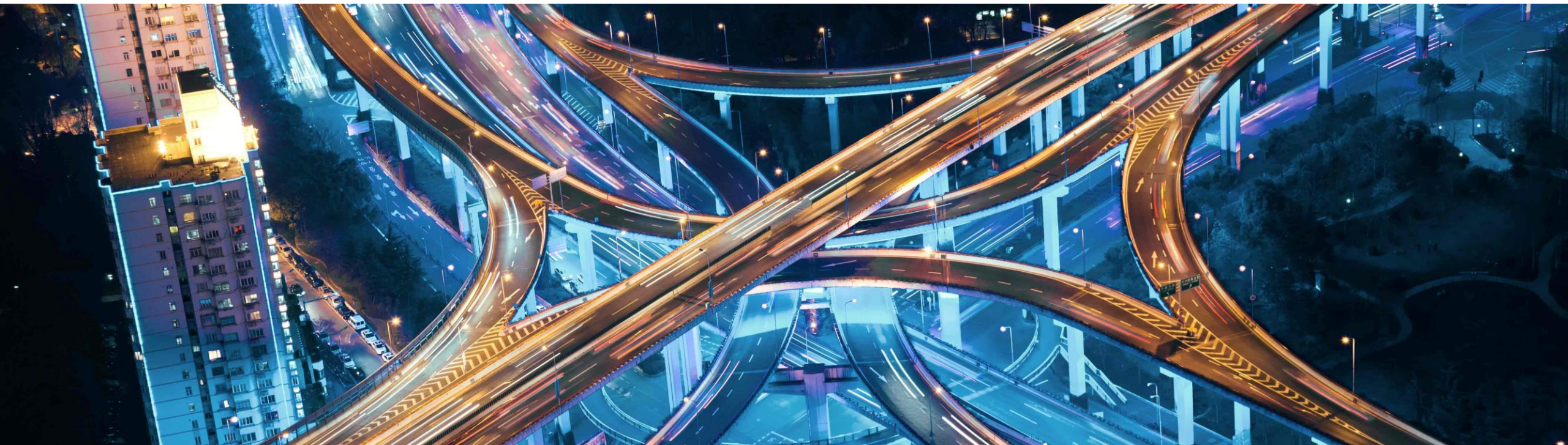
Business Users
Works with tasks, digital process and apps



Citizen Integrators/ Developers
Develops integrations and apps using APIs with low-code productivity tools



Decision Management Overview

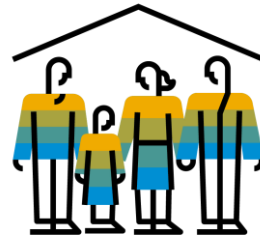


Decisions are needed in every business



Banking

Relationship based pricing,
credit decisioning, scorecards



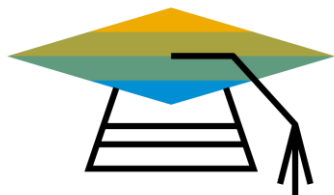
Public Sector

Tax calculations, customs duties, land
regulations, license fee calculations



Logistics and Shipping

Parts management, duties
calculations, pricing calculations



Education

Fee calculations,
course selections



Insurance

New products, claims
settlement, agent commissions



Healthcare

Patient monitoring, fraud
detection, claims

Across different business landscapes, leaders are asking challenging questions

How to better understand and deliver competitive change?

Change the discount to remain competitive



How to react faster to markets trends?

Change the assessment to manage risk



How to control fraud?

Change the routing to focus on new fraud



How to adapt to changes in consumer behavior?

Change to keep selecting the right deal terms



How to effectively manage regulation changes?

Change to keep eligibility decisions compliant



How to implement policies changes with minimal disruptions?

Change validation to track new data requirements

Source: Inspired by James Taylor of Decision Management Solutions

SAP Cloud Platform Business Rules

Introduction



SAP Cloud Platform Business Rules

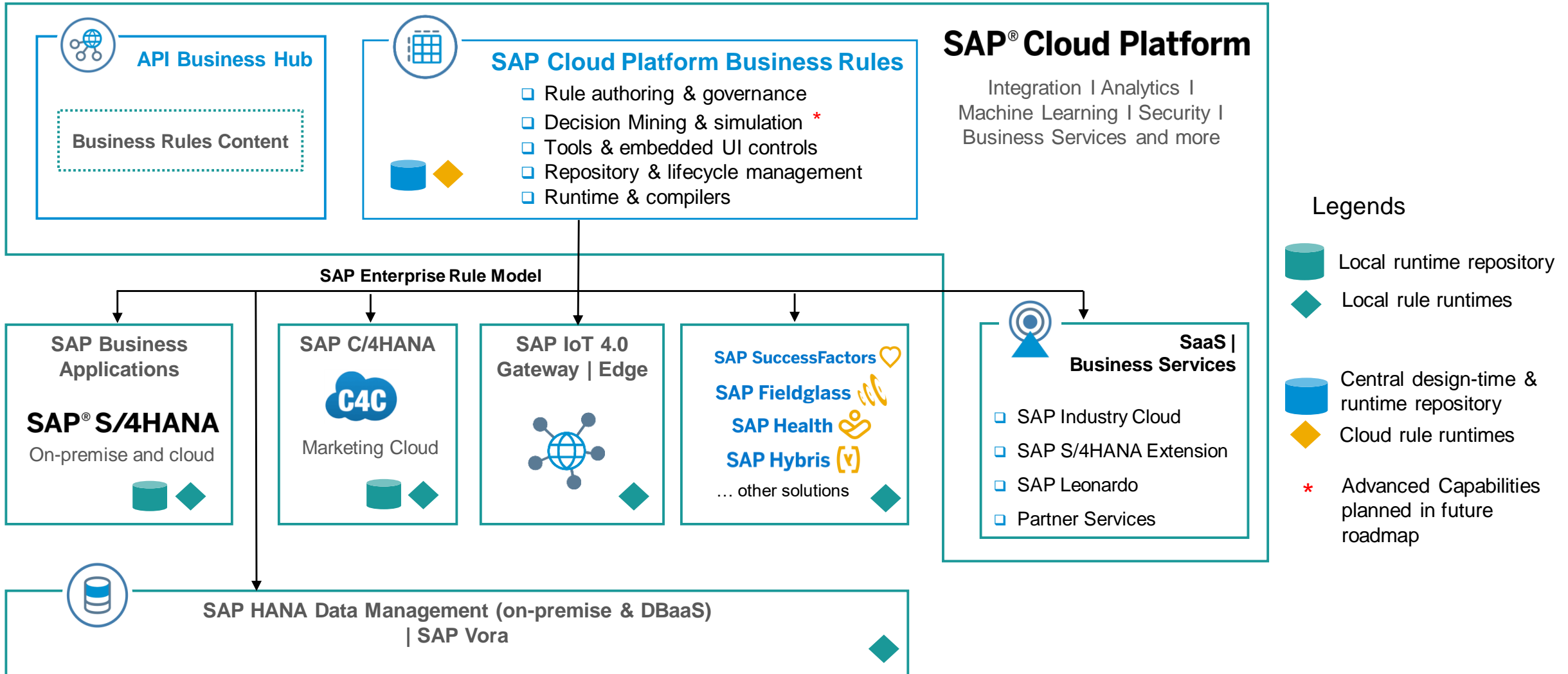
Platform reuse service that encapsulates high change decision logic from application logic

Digitize and automate decision making with business rules

Enable **centralized decision management** across the Intelligent Enterprise Suite



Enterprise Business Rules – our vision



Simplify management of decision logic across SAP Solutions

Capabilities



Agility

Encapsulate business logic from application logic and make business changes without the need to redevelop the application.



Reuse

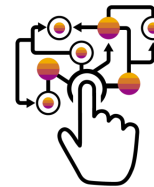
Consistent and flexible decision management with *reuse* of business rules across different business processes



Transparency

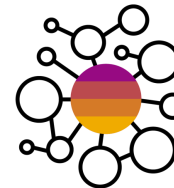
Reduce manual intervention and dependency on the IT expert to apply changes to business logic across applications

Outcomes



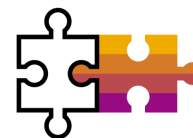
Automate decision logic

with web-based tool and common lifecycle management approach with central repository and governance



Enterprise rule model and central decision management

to manage rules centrally across different platforms generating low operation and maintenance cost



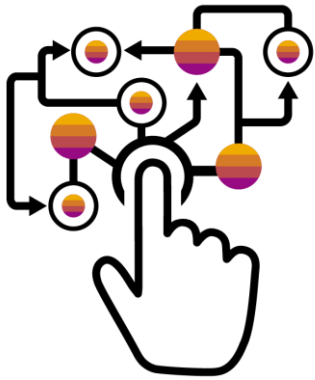
Open APIs to integrate and extend business logic with processes across various SAP and non-SAP applications

SAP Cloud Platform Business Rules

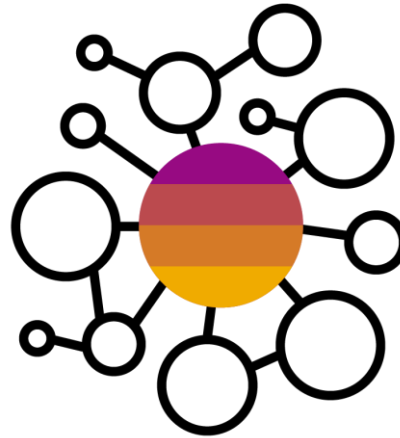
Key Capabilities



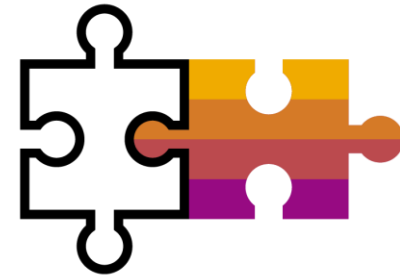
Enabling decision management across Intelligent Enterprise



Empower users to automate and manage decision logic independently from application development



Centrally build and manage decision logic across different solutions and landscapes



Rapidly build and extend decision logic for SAP and non-SAP applications with managed APIs

Enabling decision management across Intelligent Enterprise



Business Rules

Empower users to manage decision logic independently from application development

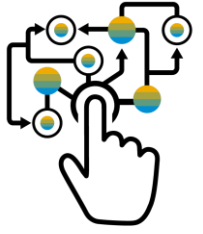
- Model business rules and formulas in tabular spreadsheet-like decision tables
- Provide an easy-to-use web-based business rules editor for managing business rule changes
- Embed UI5 controls for decision tables into configuration apps for business users
- Implement policy changes in applications without requiring application development

Centrally build and manage decision logic across different solutions and landscapes

- Reduce code and management effort for developers by externalizing business policy
- SAP Enterprise Rules Model to standardize modelling notations
- Central rule authoring and governance with web-based tool and common repository
- Direct deployment to different systems and platforms like SAP HANA, SAP S/4HANA

Rapidly build and extend decision logic for SAP and non-SAP applications with managed APIs

- Build, manage and invoke business rules from code by using APIs
- Create rules to control process extensions for S/4HANA Cloud
- Model rules to control custom workflows for SAP Cloud applications such as SAP Hybris Cloud for Customer, SAP SuccessFactors, Concur, or SAP Ariba



Empower users to manage decision logic independently from application development

- Model business rules and formulas in tabular spreadsheet-like decision tables and text rule
- Provide an easy-to-use Web-based business rules editor for managing business rule changes
- Embed UI5 controls for decision tables into configuration apps for business users
- Implement policy changes in applications without requiring application development

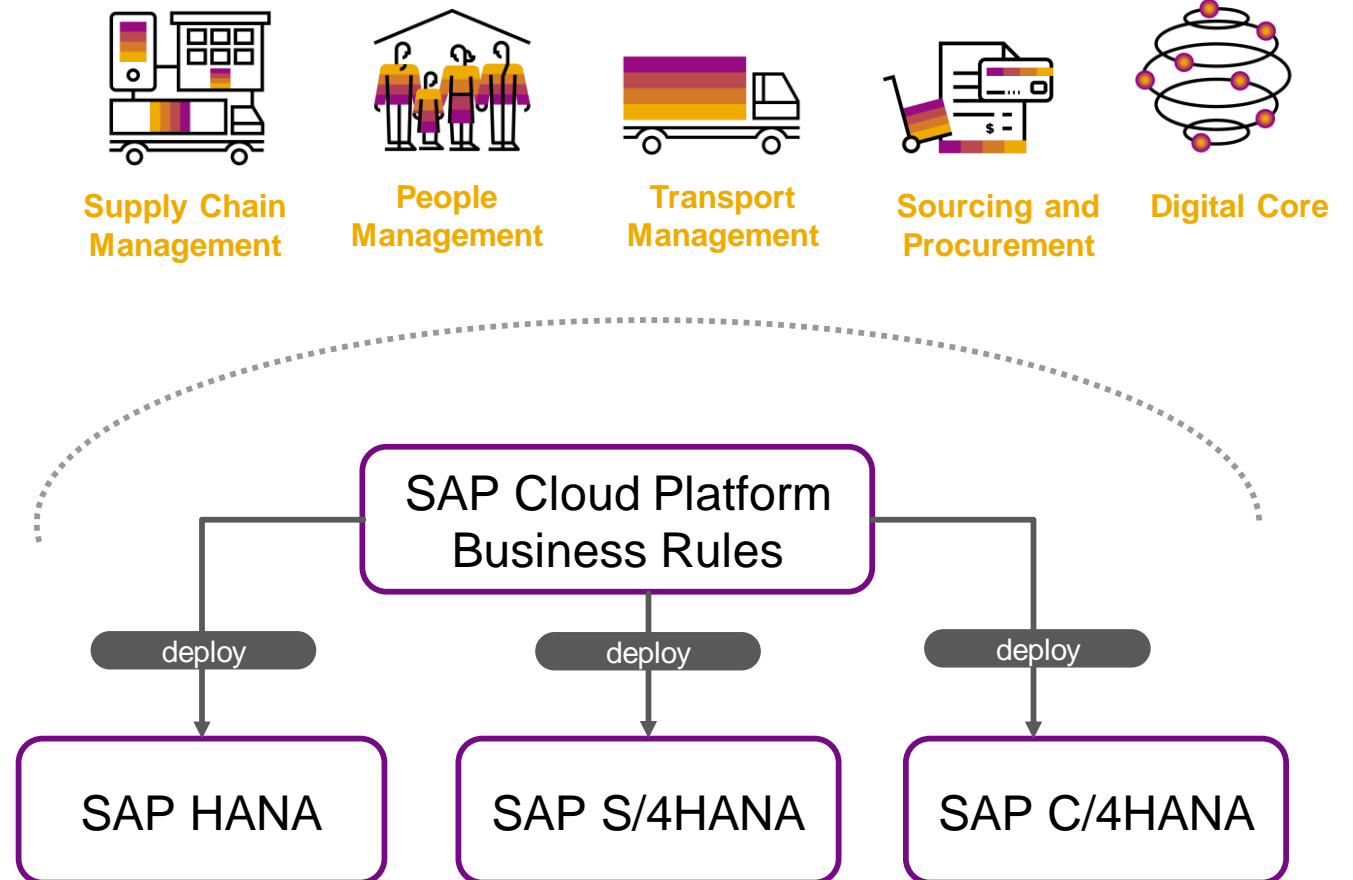
The screenshot displays the SAP Cloud Platform Business Rules interface. The top section shows a 'Manage Projects' list with columns for Project Name, Description, Status, and Created On. Below this, a detailed view of the 'BonusPlanExtensibility' project is shown, featuring a 'Decision Table' for 'ELIGIBLE_BONUS_PERCENTAGE'.

Decision Table			
If			Then
VALIDITY_START_DATE of the BO...	VALIDITY_END_DATE of the BON...	LOW_BONUS_ASSIGN_FACTOR ...	PERCENTAGE_VALUE
'01/01/2018'	'01/12/2018'	1 to 10	'15'
'01/01/2018'	'01/12/2018'	11 to 14	'20'
'01/01/2018'	'01/12/2018'	15 to 17	'9'
'01/01/2019'	'01/12/2019'	1 to 100	'18'

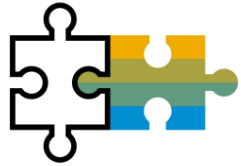
Centrally build and manage decision logic across different solutions and landscapes



- SAP Enterprise Rules Model to standardize modelling notations based on DMN 1.1
- Central rule authoring and governance capabilities with web-based tool and common repository
- Direct deployment to different platforms like SAP HANA and S/4HANA
- Enable effective use of data assets to achieve desired outcome with less risk
- Flexible and consistent decision automation and management for different platforms



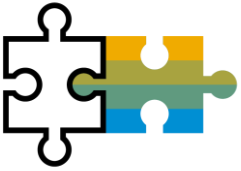
Ease developers use and management of rules with managed APIs



The screenshot shows the 'Rule Authoring API for Neo' interface. At the top, there is a share icon and the title 'Rule Authoring API for Neo' with the subtitle 'Author and Manage Business Rules for your organization'. Below this are two buttons: 'Show API Key' and 'Download SDK'. A navigation bar contains 'API References' (selected) and 'Details'. The main content area features an 'API Environment' dropdown menu with the text 'API Sandbox is not available' and a 'Configure Environments' link. On the left, a sidebar lists categories: Projects, Activation, Data Objects, Rules, Rule Services, Rulesets, Export/Import, and XSRF Handling. The main area displays a list of API endpoints:

Method	Endpoint
POST	/projects
GET	/projects
GET	/projects/{id}
PUT	/projects/{id}
DELETE	/projects/{id}

- Build and manage decision tables from code by using APIs
- Invoke the rules engine via APIs published in SAP API Business Hub
- Reduce code and management effort for developers by externalizing business policy



Rapidly build decision logic for SAP and non-SAP applications

Create business rules to encapsulate decision logic of extension applications of SAP S/4HANA Cloud, SAP SuccessFactors, etc.

Model business rules to control custom workflows for SAP Cloud applications such as

- SAP C/4HANA Cloud for Customer
- SAP SuccessFactors
- SAP Concur
- SAP Ariba

SAP® S/4HANA Cloud
SAP® S/4HANA

SAP® C/4HANA

SAP Ariba 

SAP Concur 

SAP Health 

SAP SuccessFactors 

SAP Cloud Platform Business Rules

Recipes



Business Rules Usage Patterns

Recipes



Extension Applications

that require business logic to vary and remain outside the application lifecycle

- A cloud native application built side by side to an SAP Solution e.g. SAP S/4HANA
- Invokes the Rule Service via API



Human Centric or System Centric Processes

that require decision logic to be isolated from the process flow logic

- A cloud **Workflow** or **Integration** flow process that extends or integrates an SAP Solution
- Workflow or Integration Flow Service Task invokes the Rule Service via API



Core Business Processes for In App Extensions

that require rule based field calculations & derivations and controlled environment

- SAP back office core processes e.g. Availability to Promise, Financial Reporting in S/4HANA
- SAP front office customer facing processes like Marketing Campaign Score Recommendation in C/4HANA

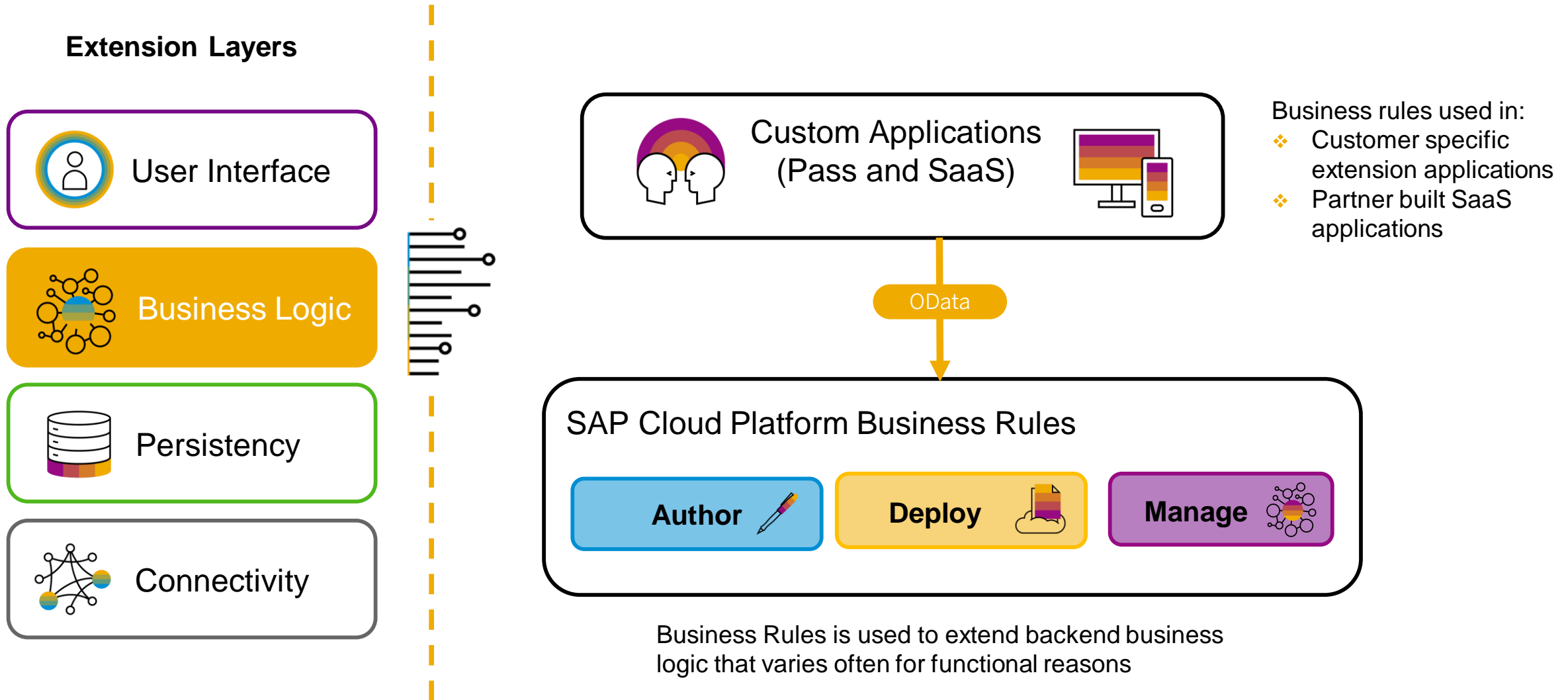


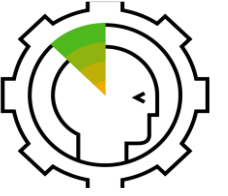
Analytical Decisions

that require executions on mass data typically stored in Agile Data Mart

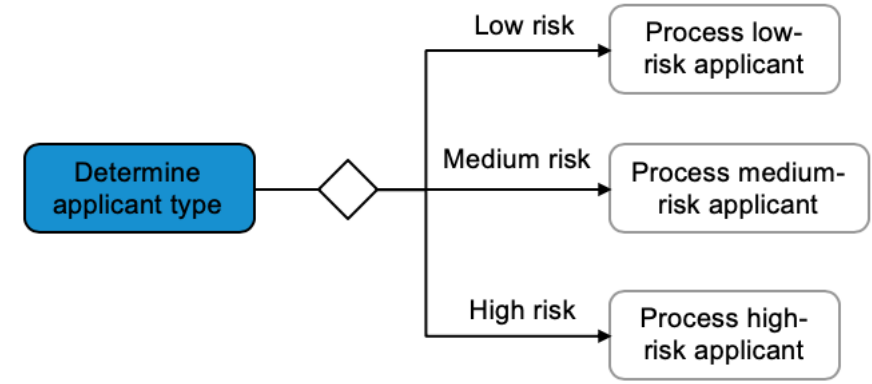
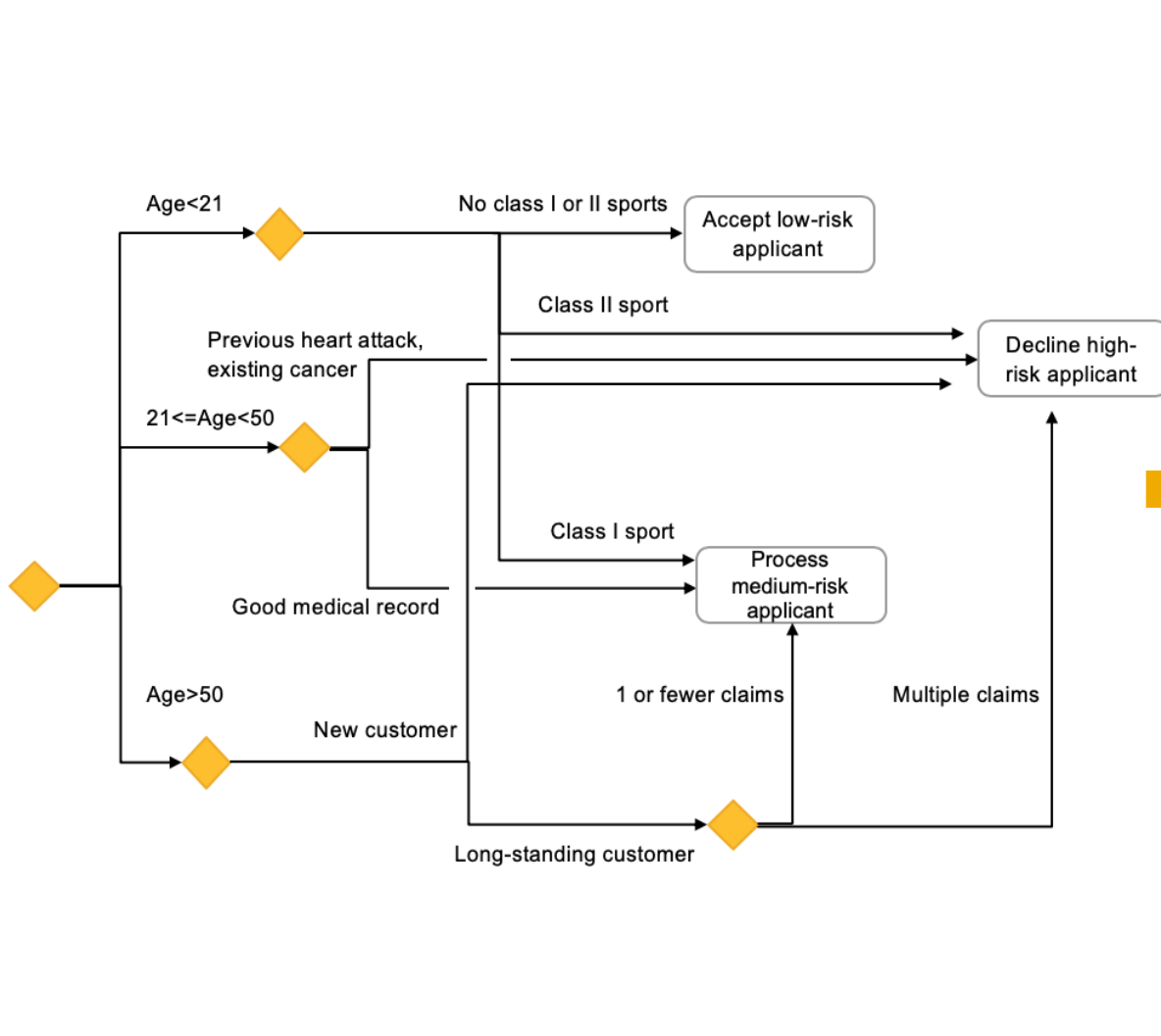
- Agile data marts refers to repository of data gathered from operational data originating from transactional systems and other sources.
- Business rules are push down to HANA to leverage faster execution of analytical rules on mass data

Recipe 1: Extension Applications that require flexible business logic





Recipe 2: Isolate Decision Logic from Process Logic

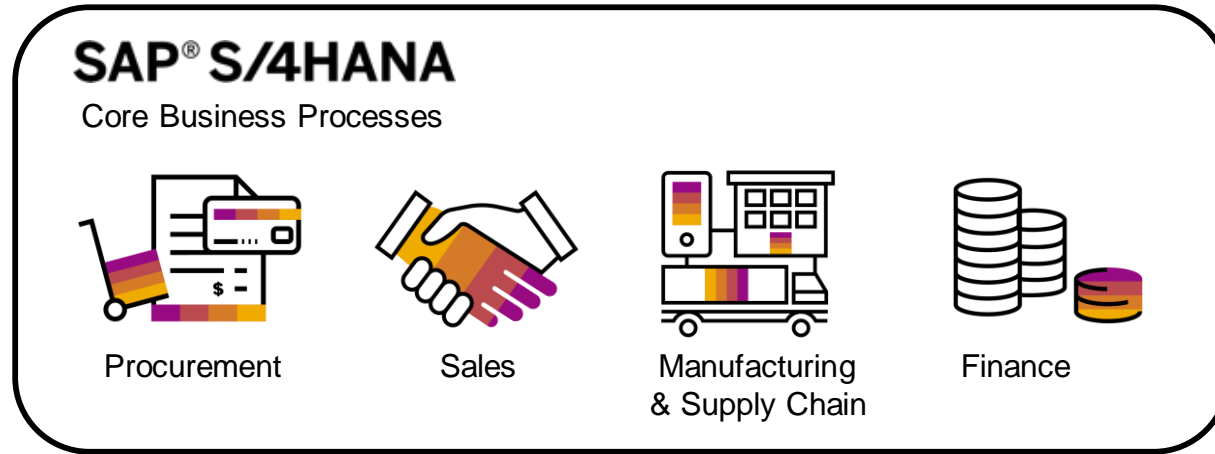
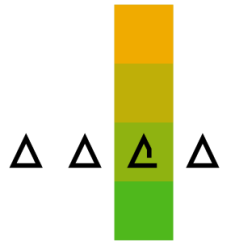


Separate decision, simpler process

Decision Table Rule

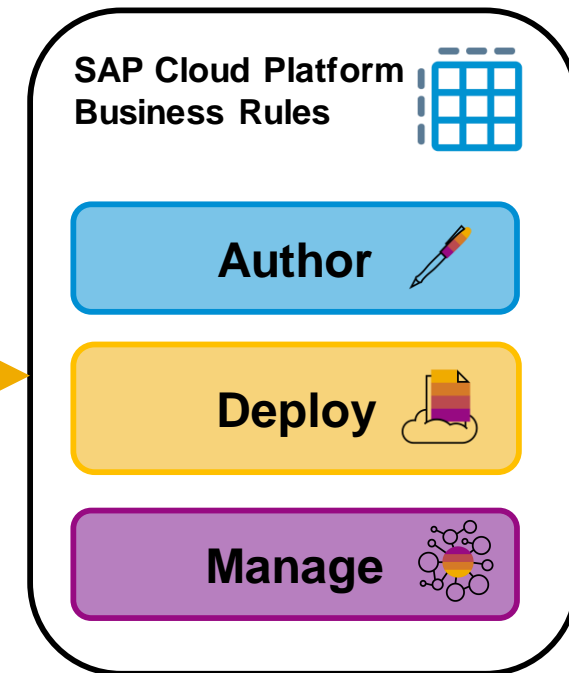
Age	Class I sports	Class II sports	Heart Attack	Cancer	New Customer	# Claims	Action
<21	N	N					Low Risk
<21		Y					High Risk
<21	Y	N					Medium Risk
21 - 50			Y				High Risk
21 - 50				Y			High Risk
21 - 50			N	N			Medium Risk
>50					Y		High Risk
>50					N	<2	Medium Risk
>50					N	>1	High Risk

Recipe 3: Operational Decisions in Core Business Processes

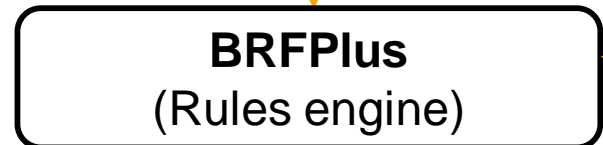


Operational Decision:

- ❖ daily repeatable business decisions
- ❖ done in high-volume
- ❖ rely on transactional data
- ❖ database lookup needed



need decision logic



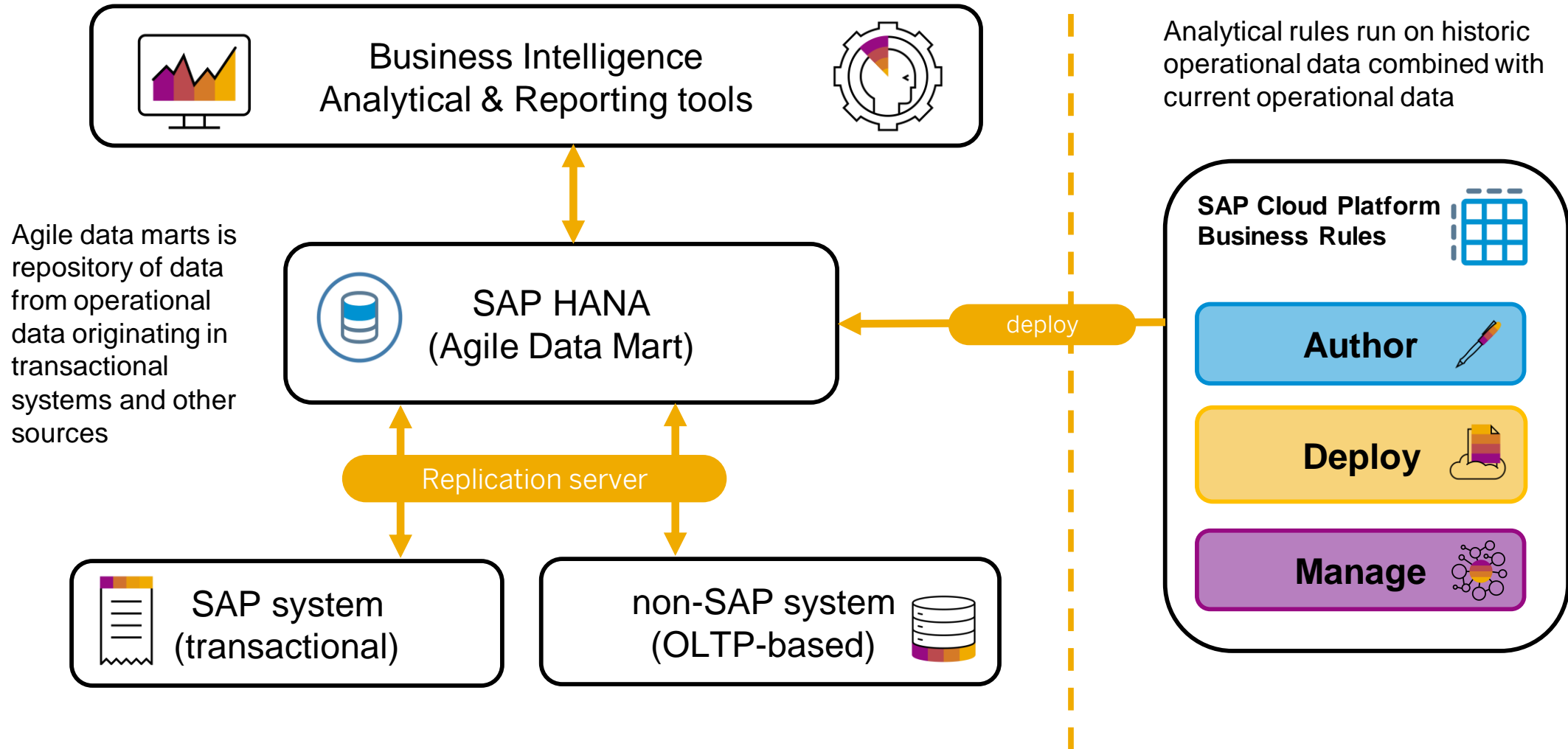
Example: Does the new account has invalid zip?

need database lookup



Example: What persisted accounts have invalid zip?

Recipe 4: Analytical Rules for Agile Data Mart



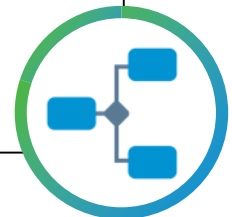
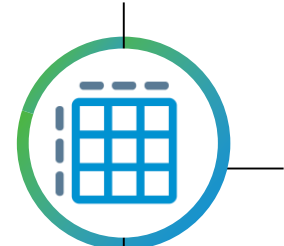
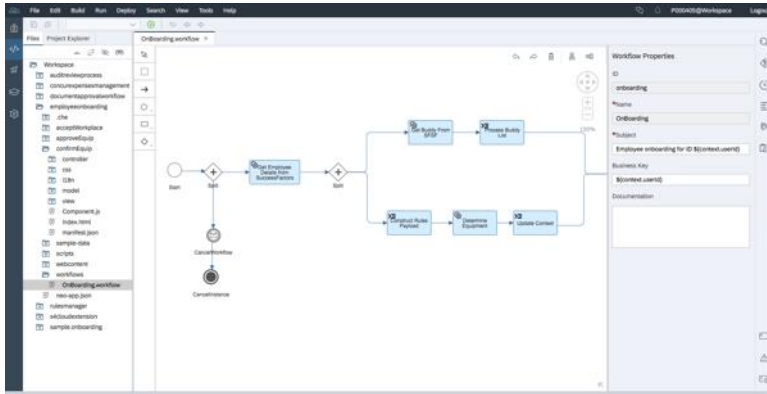
Summary





Orchestration

Rapidly build and modify workflow applications while managing business logic

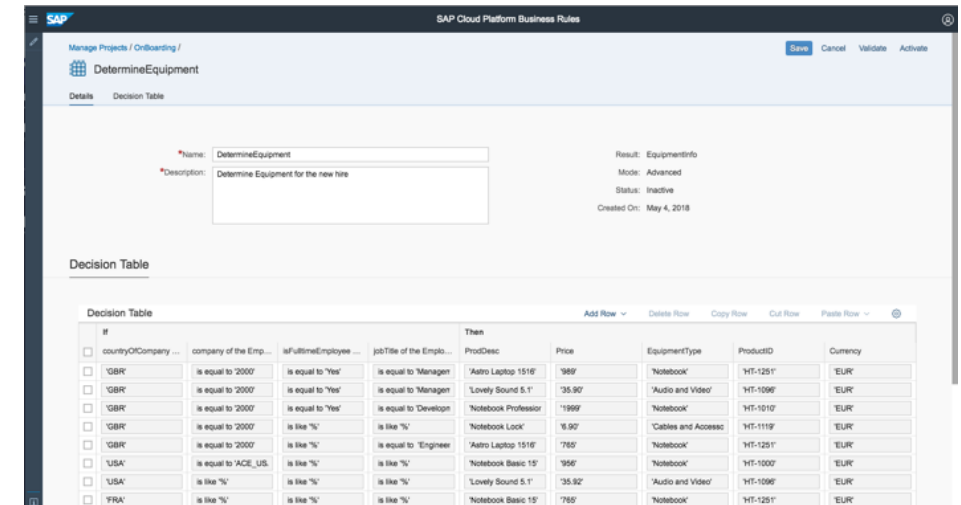


Quickly automate flexible decision with SAP Cloud Platform Business Rules

- Empower users to manage business logic independently from application development
- Create application specific business vocabulary independent of the runtime container
- Integrate Rules as a service into your applications using the REST API

Orchestrate and extend workflows with SAP Cloud Platform Workflow

- Rapidly build and modify workflow applications with web-based tooling
- Create and adapt value-adding processes in your company
- Increase efficiency and transparency
- Users can manage their workflow tasks using the My Inbox Fiori application



More Information



- [SAP Cloud Platform Business Rules – Product Page](#)
- [Solution Brief](#)
- [SAP Help](#)
- [SAP Cloud Platform Business Rules API](#)
- [SAP Cloud Platform Business Rules Roadmap](#)
- [SAP Cloud Platform regions](#)



- [Product Overview on YouTube](#)
- [Product Expert Video on YouTube](#)
- [SAP Cloud Platform Podcast #Episode 47](#)
- [Webinar: What's new in SAP Cloud Platform Business](#)
- [RulesSAP Code Talk with DJ Adams](#)
- [Quick Demo by Midhun VP](#)
- [Authoring & Testing series by Antonio](#)



- [Blogs on SAP Community](#)
- [Follow us on Twitter \(@sapcp #workflow\)](#)



- [openSAP Course](#)
- [Video Tutorial](#)
- [Learning Journey](#)
- [Lecture: Business Rules Usage Patterns](#)
- [Lecture: BPM Services in the Cloud](#)
- [Discovery Center: Automate Service Order Creation](#)



Blueprints:

- [Automating Employee Onboarding Processes](#)
- [Automate the Business Partner Creation Process Using SAP Cloud Platform Workflow and Business Rules](#)
- [Automate the Document Review Process with SAP Cloud Platform Workflow and SAP Jam Collaboration](#)

Sample Content:

- [Shopping Cart Rules](#) : consumption of rules in custom application
- [Offer Management Rules](#) : integration with SAP HANA
- [Flight Booking Rules](#): integration with SAP S/4HANA
- [Rules Manager App](#): how to embed business rules in custom app

Thank you.

Follow us



www.sap.com/contactsap

© 2019 SAP SE or an SAP affiliate company. All rights reserved.

No part of this publication may be reproduced or transmitted in any form or for any purpose without the express permission of SAP SE or an SAP affiliate company.

The information contained herein may be changed without prior notice. Some software products marketed by SAP SE and its distributors contain proprietary software components of other software vendors. National product specifications may vary.

These materials are provided by SAP SE or an SAP affiliate company for informational purposes only, without representation or warranty of any kind, and SAP or its affiliated companies shall not be liable for errors or omissions with respect to the materials. The only warranties for SAP or SAP affiliate company products and services are those that are set forth in the express warranty statements accompanying such products and services, if any. Nothing herein should be construed as constituting an additional warranty.

In particular, SAP SE or its affiliated companies have no obligation to pursue any course of business outlined in this document or any related presentation, or to develop or release any functionality mentioned therein. This document, or any related presentation, and SAP SE's or its affiliated companies' strategy and possible future developments, products, and/or platforms, directions, and functionality are all subject to change and may be changed by SAP SE or its affiliated companies at any time for any reason without notice. The information in this document is not a commitment, promise, or legal obligation to deliver any material, code, or functionality. All forward-looking statements are subject to various risks and uncertainties that could cause actual results to differ materially from expectations. Readers are cautioned not to place undue reliance on these forward-looking statements, and they should not be relied upon in making purchasing decisions.

SAP and other SAP products and services mentioned herein as well as their respective logos are trademarks or registered trademarks of SAP SE (or an SAP affiliate company) in Germany and other countries. All other product and service names mentioned are the trademarks of their respective companies.

See www.sap.com/copyright for additional trademark information and notices.

SAP folgen auf



www.sap.com/germany/contactsap

© 2019 SAP SE oder ein SAP-Konzernunternehmen. Alle Rechte vorbehalten.

Weitergabe und Vervielfältigung dieser Publikation oder von Teilen daraus sind, zu welchem Zweck und in welcher Form auch immer, ohne die ausdrückliche schriftliche Genehmigung durch SAP SE oder ein SAP-Konzernunternehmen nicht gestattet.

In dieser Publikation enthaltene Informationen können ohne vorherige Ankündigung geändert werden. Die von SAP SE oder deren Vertriebsfirmen angebotenen Softwareprodukte können Softwarekomponenten auch anderer Softwarehersteller enthalten. Produkte können länderspezifische Unterschiede aufweisen.

Die vorliegenden Unterlagen werden von der SAP SE oder einem SAP-Konzernunternehmen bereitgestellt und dienen ausschließlich zu Informationszwecken. Die SAP SE oder ihre Konzernunternehmen übernehmen keinerlei Haftung oder Gewährleistung für Fehler oder Unvollständigkeiten in dieser Publikation. Die SAP SE oder ein SAP-Konzernunternehmen steht lediglich für Produkte und Dienstleistungen nach der Maßgabe ein, die in der Vereinbarung über die jeweiligen Produkte und Dienstleistungen ausdrücklich geregelt ist. Keine der hierin enthaltenen Informationen ist als zusätzliche Garantie zu interpretieren.

Insbesondere sind die SAP SE oder ihre Konzernunternehmen in keiner Weise verpflichtet, in dieser Publikation oder einer zugehörigen Präsentation dargestellte Geschäftsabläufe zu verfolgen oder hierin wiedergegebene Funktionen zu entwickeln oder zu veröffentlichen. Diese Publikation oder eine zugehörige Präsentation, die Strategie und etwaige künftige Entwicklungen, Produkte und/oder Plattformen der SAP SE oder ihrer Konzernunternehmen können von der SAP SE oder ihren Konzernunternehmen jederzeit und ohne Angabe von Gründen unangekündigt geändert werden. Die in dieser Publikation enthaltenen Informationen stellen keine Zusage, kein Versprechen und keine rechtliche Verpflichtung zur Lieferung von Material, Code oder Funktionen dar. Sämtliche vorausschauenden Aussagen unterliegen unterschiedlichen Risiken und Unsicherheiten, durch die die tatsächlichen Ergebnisse von den Erwartungen abweichen können. Dem Leser wird empfohlen, diesen vorausschauenden Aussagen kein übertriebenes Vertrauen zu schenken und sich bei Kaufentscheidungen nicht auf sie zu stützen.

SAP und andere in diesem Dokument erwähnte Produkte und Dienstleistungen von SAP sowie die dazugehörigen Logos sind Marken oder eingetragene Marken der SAP SE (oder von einem SAP-Konzernunternehmen) in Deutschland und verschiedenen anderen Ländern weltweit. Alle anderen Namen von Produkten und Dienstleistungen sind Marken der jeweiligen Firmen.

Zusätzliche Informationen zur Marke und Vermerke finden Sie auf der Seite www.sap.com/corporate/de/legal/copyright.html.