



S/4 On Our Own in 3 months Upgrade vs re - implementation

Muru Ramamoorthy, IT Solutions Architect, L.B. Foster
Chris Ritterhern, Principal Enterprise Architect, Protera
Session ID #: 82427

About the Speakers

Muru Ramamoorthy

- IT Solutions Architect, L.B. Foster
- 4+ years with L.B. Foster at our Headquarters in Pittsburgh, PA
- Serves as the responsible for overall development, interfaces, UX Design (Fiori/Personas), Master Data Governance

Chris Ritterhern

- Principal Enterprise Architect
- 25+ years experience from Technical to all application layers
- Certified Scuba Diver

Key Outcomes/Objectives

1. S/4 can be a conversion vs green-field
2. Stay focused on the business process end-to-end ownership
3. You know best...
 - a. corollary: Sometimes crazy ideas are ok



Agenda

- L.B. Foster – Brief Portrait
- Our Compelling Event – This Big Picture
- Key Project Concepts
- The Team
- What we really did, our toolset(s)
- You can too...

L.B. Foster – Brief Portrait

- L.B. Foster provides rail, construction, and energy markets with innovative solutions to build and maintain their critical infrastructure and landmark projects.
- Headquartered in Pittsburgh, PA.
- Several locations across the US as well as Canada, UK and Germany.
- Products and services include rail segments, rail insulator joints, trackside lubricators, concrete rail ties, precast concrete buildings, pipe coating/threading, bridge decking and oil field tubular/equipment inspection just to name a few!



Our Compelling Event – This Big Picture

- L.B. Foster's initial SAP implementation (ECC 6 w/ EHP7 and Simple Finance 1509 on HANA) went live April 2016 but included only part of overall business.
- Changes to management, business strategy delayed additional roll outs.
- Executive decision to jump start SAP roll out in summer of 2018.
- Question – Do we upgrade to full S/4 HANA now or onboard additional businesses which will complicate our conversion later?



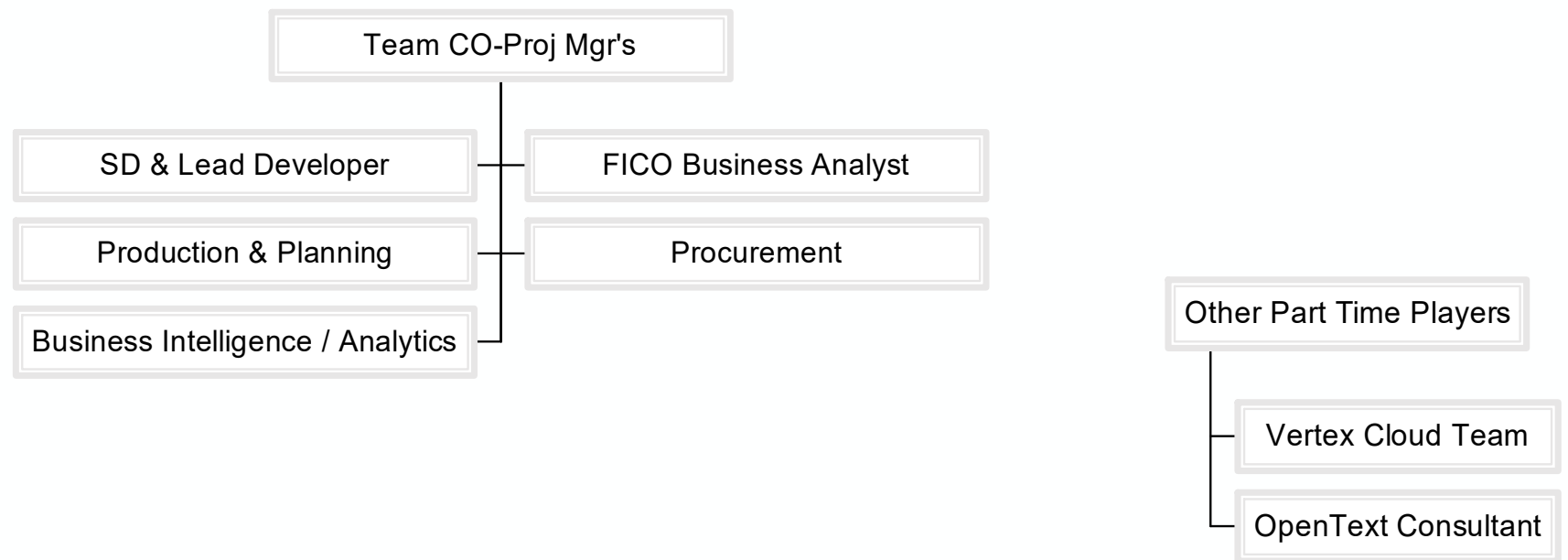
Key Project Concepts

- Where do we start?
 - This is where we looked at the rehearsal concept & a fast conversion as a proof point.
- Rehearsal concept good, ok what about all the other stuff
- Are we really going to change hosting providers?
- Who's going to help?
- So you say we have to upgrade OpenText..., Sure, let's move Vertex to the cloud...
- Our Analytics Strategy, BOBJ-Webi ongoing move to SAP Analytics Cloud
- Mill Products – additional functionality for our initial roll out, why not!
- Cut-over, dual-maintenance, run-in, de-commissioning.....

Key Project Concepts – Business Process

- Business Processes
 - Order to Cash
 - New Credit Management (FSCM)
 - Sales owned the Vertex to cloud move with technical assistance
 - Procure to Pay
 - Invoice clearing – OpenText
 - AP oversaw the OpenText upgrade
 - Build to Ship
 - Oh right, we use SAP Variant Configuration...
 - Mill Products
 - Journal to Close
 - Accounting owning the bank feed process
 - Master Data
 - The whole concept of Business Partner vs Customer-Vendor

The L.B. Foster – Business & IT Team

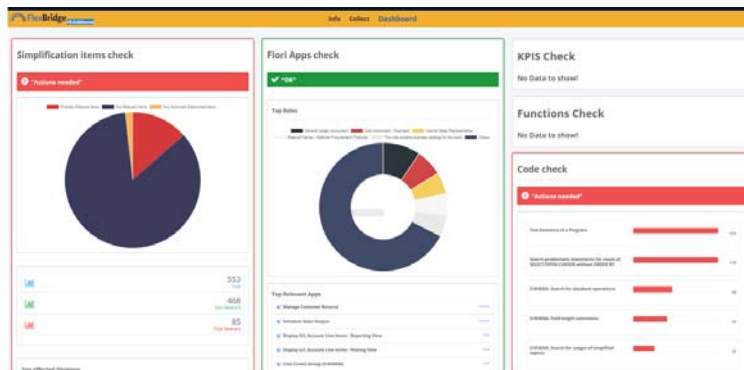


The L.B. Foster – Business & IT Team



Initial Steps – Simplification Items

We initially used a tool from Protera called FlexBridge



This initially helped us to quickly see the big picture...

			SAP Note URL	Required	Team Member	Comments	Effort	Complete	
			12 http://launchpad.support.sap.com/#/notes/2200412	No					
			80 http://launchpad.support.sap.com/#/notes/2206980	Yes	Muru		High		
			http://launchpad.support.sap.com/#/notes/2259818	Yes	Muru		Medium		
5	SLL-LEG-FUN-CLS	SI1: FIN_SLL_CLS	2376556 http://launchpad.support.sap.com/#/notes/2376556	Yes	Solomon	Materials - Not relevant in PRD	Medium		
6	PP-MRP	SI1: Logistics_PP-MRP	2268044 http://launchpad.support.sap.com/#/notes/2268044	Yes	Dan / Solomon	Subcontracting	Medium		
7	LO-MD-MM,CA-FLE-MAT	SI4: MasterData_PM	2267140 http://launchpad.support.sap.com/#/notes/2267140	Yes	Muru	Mat 18 to 40	Medium		
8	PP-MRP	SI11: Logistics_PP	2268085 http://launchpad.support.sap.com/#/notes/2268085	Yes	Solomon	MRP Live	Medium		
9	PP-MRP,PP-MP-LTP	SI12: Logistics_PP	2268088 http://launchpad.support.sap.com/#/notes/2268088	Yes	Solomon	MRP Live	Medium		
10	LO-MD-PC	SI10: MasterData_PC	2267292 http://launchpad.support.sap.com/#/notes/2267292	No		Hybris - Not relevant in PRD			
	LO-MD-MM	SI2: MasterData	2267295 http://launchpad.support.sap.com/#/notes/2267295	No		MDM inte relevant in			
11						Count of Simplification ID Column Labels			
	SD-BF,SD-BF-MIG	SI1: SD_GENERAL	2267306 http://launchpad.support.sap.com/#/notes/2267306	Yes	Robyn/Muru	Simplified Status tabl	Low Medium Medium (blank) Grand Total		
12						Dan	1	1	2
	SD-BF-PR,SD-MD-CM	SI2: SD_PRIC	2267308 http://launchpad.support.sap.com/#/notes/2267308	Yes	Robyn/Muru	Dan / Solomon	1	3	6
13						KONV Prcl	1		1
14	PS-CON	SI17 Logistics_PS	2267331 http://launchpad.support.sap.com/#/notes/2267331	No		Project sys	1	2	3
15	PS	SI18 Logistics_PS	2267333 http://launchpad.support.sap.com/#/notes/2267333	No		Project sys	1		3
16	SD-BIL-RB	SI6: SD_REBATES	2267344 http://launchpad.support.sap.com/#/notes/2267344	No		Trade Pror	4	5	11
17	SD-BIL	SI14: SD BILLING_OM	2267376 http://launchpad.support.sap.com/#/notes/2267376	Yes	Eric	Output Col	1		1
18	SD-BIL-RB	SI15: SD_Rebate_All	2267377 http://launchpad.support.sap.com/#/notes/2267377	Yes	Eric	Rebate - n	1	2	3
19	SD-SLS-GF,SD-BIL,SD-MD-CM	SI16: SD_Miscellaneous minor deprecations in SD Area	2267395 http://launchpad.support.sap.com/#/notes/2267395	Yes	Muru	BAPI chan	2	2	10
20	MM-PUR-GF-LIS	SI3: PROC_LIS	2267414 http://launchpad.support.sap.com/#/notes/2267414	No		Vendor ev			2
21	SD-BF-PR,SD-MD-CM	SI8: PROC_MM_PRICING	2267442 http://launchpad.support.sap.com/#/notes/2267442	Yes	Eric	Pricing Pro	1	1	2
22	LO-VC	SI13: Logistics - PLM	2267873 http://launchpad.support.sap.com/#/notes/2267873	Yes	Dan/ Shwan / Solomon	VC Materi		2	6
23	PM-IS	SI1: Logistics_PM	2267463 http://launchpad.support.sap.com/#/notes/2267463	No		LIS (blank)	1		1
24	SD-BF-AC	SI1: Logistics_ATP	2267745 http://launchpad.support.sap.com/#/notes/2267745	Yes	Eric	Advanced			
25	PP-MRP	SI2: Logistics_PP-MRP	2268045 http://launchpad.support.sap.com/#/notes/2268045	Yes	Dan / Solomon	MRP	Grand Total	4 13 15 15 5	52

S/4 Pre & Post Conversion Steps

2267308 - S4TWL - Data Model Changes in SD Pricing

Symptom

You are doing a system conversion to SAP S/4HANA. In this scenario, the following SAP S/4HANA Transition Worklist item applies.

Solution

Business Value

Data model simplifications in Sales and Distribution(SD) pricing offer the following benefits:

- Since it is no longer a cluster table, the pricing result can now be directly accessed for analytical purposes.
- Enhanced field lengths for several fields allow for more flexibility in pricing and condition technique.
 - Customer and document pricing procedure extensions allow for more flexible pricing procedure determination.
 - The number of possible customer condition tables for pricing has been roughly doubled.
 - The number of possible accesses in an access sequence has been enhanced from 99 to 999.
 - The key of condition tables ('A-Tables') can now be 255 characters long (previously 100).
- The removal of redundant fields from condition header table:
 - reduces the memory footprint of condition records
 - prevents additional conversions and, therefore, downtime if field lengths from pricing field catalogue entries need extension

Description

- Business documents within the SAP Business Suite, such as the sales order and the purchase order, are used to store the pricing result in database table KONV. In SAP S/4HANA, table KONV has been replaced in its data persistency role by the new table PRCD_ELEMENTS. However, KONV is and can still be used for data declaration purposes. It still defines the structure of the pricing result within the

This is no minor statement, this can percolate all the way to revenue & analytic reports, not to mention user-exits, etc...

S/4 Pre & Post Conversion Steps

Simplification Item List - SAP S/4HANA 1709 [03 (10/2018)]						
<input type="checkbox"/> Check Consistency for All <input type="checkbox"/> Check Consistency Details <input type="checkbox"/> Display Consistency Check Log <input type="checkbox"/> Apply/Revoke Exemption <input type="checkbox"/> Display Exemption Log						
Application Area	ID	Title	Component	Category	Relevance	Status
Master Data	S12_MasterData	S4TWL - MDM 3.0 integration	LO-MD-MM	Functionality unavailable (equivalent exists)	⊗	Released
Master Data	S13_MasterData	S4TWL - SRM Product Master	AP-MD-PRO	Functionality unavailable (equivalent exists)	⊗	Released
Master Data	S14_MasterData	S4TWL - Logistics Batch Management	LO-BM-MD	Functionality unavailable (equivalent exists)	⊗	Released
Industry Oil	S021_ACM_Functional_Equivalent_Available	S4TWL - ACM - Simplification for Contract Approval	LO-AGR	Functionality unavailable (equivalent exists)	⊗	Released
SAP Archa	S021_ARBA_CLOUD_INTEG	S4TWL - Archa Cloud Integration	BWS-AR-TRF	Change of existing functionality	⊗	Released
Cross Topics	S021_AS_ADAP_HOHL_SIMPLE	ABAPTWL - No support for non simplified system flavour	BC-ABA-LA	Change of existing functionality	⊗	Released
Commodity Management	S021_CM_CPE_MARKET_DATA	S4TWL - CM - Simplified Market Data	SD-BF-CPE-MM-PUR-GF-C	Functionality unavailable (equivalent exists)	⊗	Released
Commercial Project Management	S021_CPM_RATE_CARD	S4TWL - CPM - Rate Card	CA-CPD	Functionality unavailable (equivalent exists)	⊗	Released
Enterprise Controlling	S021_EC-CS_MATHS	S4TWL - Usage of long Material Number in EC-CS	EC-CS	Change of existing functionality	⊗	Released
Logistics - Management of Change	S021_Logistics_MOC - Simplifications in MOC	S4TWL - Simplifications in Management of Change	CA-IAM-MOC	Change of existing functionality	⊗	Released
Industry Media	S021_MEDIA	S4TWL - SAP Media availability in SAP S/4HANA	IS-M	Functionality unavailable (no equivalent)	⊗	Released
Industry Oil - OGSD	S021_OGSD_OLD_DATACOLL	S4TWL - OGSD - Classic Data Collation	IS-OIL-DS-OGSD	Functionality unavailable (equivalent exists)	⊗	Released
Industry Oil - OTAS	S021_OTAS_DISPATCH	S4TWL - OTAS - Integrated Dispatch Management	LO-BSLM	Functionality unavailable (equivalent on roadmap)	⊗	Released
Transportation Management	S021_TM_CUSTOMZING	S4TWL - Simplified customizing of Transportation Manangement	TM-FRS-TM-FRS-P-TM-FR	Change of existing functionality	⊗	Released
Industry Oil	S022_ACM_Functionality_not_Available	S4TWL - ACM - Simplification for Pre-payment and External Interf	LO-AGR	Functionality unavailable (no equivalent)	⊗	Released
Cross Topics	S022_AS_ADAP_CLEANUP	ABAPTWL - Cleanup of orphaned objects	BC	Functionality unavailable (no equivalent)	⊗	Released
Commodity Management	S022_CM_CPE_ACTIVATION	S4TWL - CM - Simplified CPE Activation	LO-CRM-BF-MM-PUR-GF-	Change of existing functionality	⊗	Released
Commercial Project Management	S022_CPM_CAC_INTERFACE	S4TWL - Interface of SAP CPM with SAP Cloud for Customer	CA-CPD	Functionality unavailable (no equivalent)	⊗	Released
Industry Media	S022_MEDIA_PRODUCT_MASTER	S4TWL - Media Product Master	CA-MDG	Functionality unavailable (equivalent exists)	⊗	Released
Industry Oil - OGSD	S022_OGSD_OLD_INTERFACES	S4TWL - OGSD - Classic OGSD Interfaces	IS-OIL-DS-OGSD	Functionality unavailable (equivalent exists)	⊗	Released
Industry Oil - OTAS	S022_OTAS_PETROLEUM	S4TWL - OTAS - Integrated Petroleum Report	LO-BSLM	Functionality unavailable (no equivalent)	⊗	Released
Transportation Management	S022_TM_CUSTOMZING_2	S4TWL - Forwarding Settlement Document Transfer in TM	TM-FWS-BL-TM-FWS	Change of existing functionality	⊗	Released
Industry Oil	S023_ACM_Function_availability_in_Future_roadm	S4TWL - ACM - Simplification of Cross Topics	LO-AG			
Cross Topics	S023_AS_ADAP_SSCR	ABAPTWL - SSCR license key procedure is no longer supported	BC-ABV			
Commodity Management	S023_CM_CPE_FACE	S4TWL - CM - CPE Simplified Formula Assembly & Formula Eval	LO-CM			

Conversion of Accounting to SAP S/4HANA









Info: SAP S/4HANA Customizing and Data Migration


Preparations and Migration of Customizing

- Check Customizing Settings Prior to Migration
- Set Number of Jobs for Activities in Mass Data Framework
- Preparations and Migration of Customizing for General Ledger
- Preparations and Migration of Customizing for Accrual Engine
- Preparations and Migration of Customizing for Asset Accounting
- Preparations and Migration of Customizing for Controlling
- Preparations and Migration of Customizing for Material Ledger
- Preparations for Migration of House Bank Accounts
- Preparations for Migration of Financial Documents to Trade Finance
- Preparatory Activities and Migration of Customizing for Credit Management

ASUG

Customer – Vendor Master Conversion to Business Partner

Precheck Status Result	
PreCheck Details	Status
BP roles are assigned to account groups	
Every account group BP Grouping must be available	
Customer value mapping	
Vendor value mapping	
Customer and Vendor Value mapping(BP->Customer or Vendor)	
CVI Link	
CVI MAPPING [customer (2867 /2867) vendor (13575 /13575)]	
Contact Person Mapping	

S4D(1)/100 BP roles are not assigned to account groups	
Error Messages	
Status	Error description
	KRED Vendor Account Group is not maintained in table CVIC_VEND_T...

S/4 Pre & Post Conversion Steps

Structure

- ▼ SAP Customizing Implementation Guide
 - Commercial Project Management
 - OpenText Archiving and Document Access for SAP Solutions
 - OpenText Business Suite for SAP Solutions
 - OpenText Extended ECM for SAP Solutions
 - ▼ Activate Business Functions
 - ▼ Conversion of Accounting to SAP S/4HANA
 - ▼ Info: SAP S/4HANA Customizing and Data Migration
 - Preparations and Migration of Customizing
 - ▼ Data Migration
 - Partitioning of Universal Journal Entry Line Items Table
 - Regenerate CDS Views and Field Mapping
 - Analyze Transactional Data
 - Display Status of Analysis of Transactional Data
 - Documentation of Data Migration
 - Start and Monitor Data Migration
 - Migrate General Ledger Allocations
 - Migrate House Banks Accounts
 - Migration of Financial Documents to Trade Finance
 - Credit Management Migration
 - Complete Migration
 - Reconcile and Compare Migrated Data
 - Set Migration to Completed
 - Complete Migration of Financial Documents to Trade Finance

Display logs

Technical Information Help

7 1 28 76

Type	Message	Text	LTxt
✖	Currency code is not defined for currency type 40, company code MX01		
✖	Doc. splitting is active in CoCode 1000; activate PrCtr Acctng in COAr 1000		
✖	Doc. splitting is active in CoCode 2000; activate PrCtr Acctng in COAr 1000		
✖	Doc. splitting is active in CoCode 3000; activate PrCtr Acctng in COAr 1000		
✖	Doc. splitting is active in CoCode 4000; activate PrCtr Acctng in COAr 1000		
✖	Doc. splitting is active in CoCode 5000; activate PrCtr Acctng in COAr 1000		
✖	Posting period variant is empty (ledger 0L/company code ID01)		
⚠	"FI-GL (new)" scen. FIN_PCA used in Idgr 0L; activate PrCtr Acctng in COAr 0MB1		
⚠	"FI-GL (new)" scen. FIN_PCA used in Idgr 0L; activate PrCtr Acctng in COAr 1000		
⚠	"FI-GL (new)" scen. FIN_PCA used in Idgr 0L; activate PrCtr Acctng in COAr BE01		
⚠	"FI-GL (new)" scen. FIN_PCA used in Idgr 0L; activate PrCtr Acctng in COAr CA01		
⚠	"FI-GL (new)" scen. FIN_PCA used in Idgr 0L; activate PrCtr Acctng in COAr CH01		
⚠	"FI-GL (new)" scen. FIN_PCA used in Idgr 0L; activate PrCtr Acctng in COAr CN01		
⚠	"FI-GL (new)" scen. FIN_PCA used in Idgr 0L; activate PrCtr Acctng in COAr CZ01		
⚠	"FI-GL (new)" scen. FIN_PCA used in Idgr 0L; activate PrCtr Acctng in COAr DE01		
⚠	"FI-GL (new)" scen. FIN_PCA used in Idgr 0L; activate PrCtr Acctng in COAr DE02		
⚠	"FI-GL (new)" scen. FIN_PCA used in Idgr 0L; activate PrCtr Acctng in COAr FI01		
⚠	"FI-GL (new)" scen. FIN_PCA used in Idgr 0L; activate PrCtr Acctng in COAr IN01		
⚠	"FI-GL (new)" scen. FIN_PCA used in Idgr 0L; activate PrCtr Acctng in COAr JP01		
⚠	"FI-GL (new)" scen. FIN_PCA used in Idgr 0L; activate PrCtr Acctng in COAr KZ01		
⚠	"FI-GL (new)" scen. FIN_PCA used in Idgr 0L; activate PrCtr Acctng in COAr NO01		
⚠	"FI-GL (new)" scen. FIN_PCA used in Idgr 0L; activate PrCtr Acctng in COAr PE01		
⚠	"FI-GL (new)" scen. FIN_PCA used in Idgr 0L; activate PrCtr Acctng in COAr PT01		
⚠	"FI-GL (new)" scen. FIN_PCA used in Idgr 0L; activate PrCtr Acctng in COAr RERF		

See...Think... Situationally Revise...

October 18						
Mo	Tu	We	Th	Fr	Sa	Su
1	2	3	4	5	6	7
8	9	10	11	12	13	14
15	16	17	18	19	20	21
22	23	24	25	26	27	28
29	30	31				

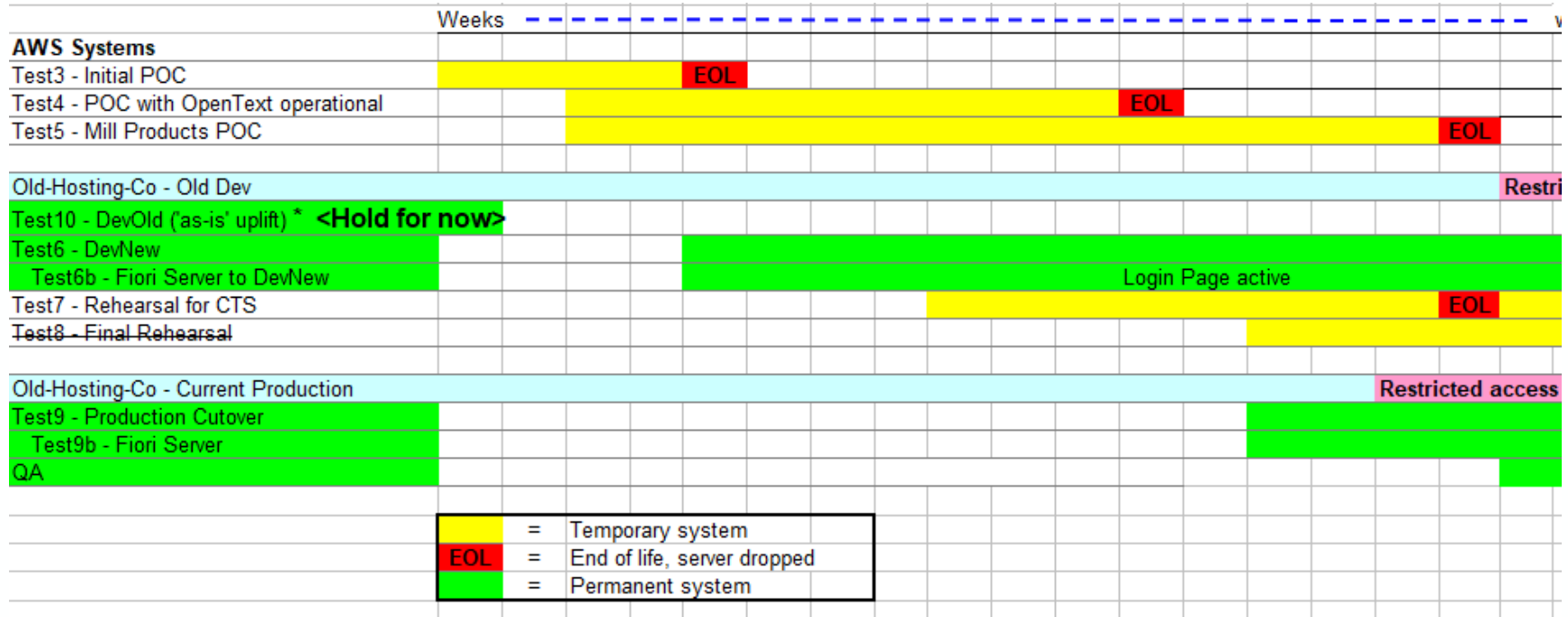
November 18						
Mo	Tu	We	Th	Fr	Sa	Su
			1	2	3	4
5	6	7	8	9	10	11
12	13	14	15	16	17	18
19	20	21	22	23	24	25
26	27	28	29	30		

December 18						
Mo	Tu	We	Th	Fr	Sa	Su
					1	2
3	4	5	6	7	8	9
10	11	12	13	14	15	16
17	18	19	20	21	22	23
24	25	26	27	28	29	30
31						

January 19						
Mo	Tu	We	Th	Fr	Sa	Su
	1	2	3	4	5	6
7	8	9	10	11	12	13
14	15	16	17	18	19	20
21	22	23	24	25	26	27
28	29	30	31			

February 19						
Mo	Tu	We	Th	Fr	Sa	Su
				1	2	3
4	5	6	7	8	9	10
11	12	13	14	15	16	17
18	19	20	21	22	23	24
25	26	27	28			

Ok Where did we put that server....



Simple visualization tools

A More Technical View

Pre-Conversion		Technical - Conversion		Post-Conversion	
Day 1	Day 2	Day 3	Day 4	Day 5	Day 6

A View to a Cut-Over....

Cut-Over Production System Steps by Day											
Start date: Day Zero											
Protera Tech Team	Friday	Saturday	Sunday	Monday - EOD likely	Tuesday	Wednesday	Thursday	Friday	Sat	Sun	Monday
LBF Biz Team	LBF Biz Team	Protera Tech team	conversion period	LBF Biz Team	LBF Biz Team	LBF Biz Team	LBF Biz Team	LBF Biz Team			LBF Biz Team
Day 0	Day 1	Day 2	Day 3	Day 4	Day 5	Day 6	Day 7	Day 8	Day 9	Day 10	Day 11
Copy of Production made system available at 7pm EST	System available to LBF Team 8am EST	S/4 Software Update Management 'Gen Step'		System back for post conversion (estimated 8m EST)	Transport 3 - New company code or business segment updates	Set Client 100 in A/W/S to 'Production' mode. 'Now active'	Troubleshooting various business process issues	Change Old Production System Message to 'Now restricted to accounting access'			Go-live System open to all LBF users
System copied to AWS	Transport 1- Pre-Config settings		LiveCache install starts	Vertex old - disabled	Vertex Cloud config to be finished off (Vertex team)	9am Re-run Bank feeds starting from 2/1/19 to current Jon to do actual execution Note: completed 10am EST	All Day	Late Afternoon: Accounting to release system for limited user community			System access open to all Old Production access now restricted
All pre-conversion / upgrade notes applied	Business Partner & other conversion pre-work	----- estimated 48 hours -----		OpenText final conversion to start (estimated 8-16 hours) (assigned to Satya)	GL Balance loading Teja	1pm start Alpha-Beta Team Business Process run thru in Client 100		Soft Opening to limited user community			
OpenText - stop CloudEndure	System available for Gen step possible 12pm EST availability. (actual 2pm EST)		System turn over actual 9am EST	Transport 2 - Post configuration settings	Alpha Team Business Process run thru test in Client 200	Checkpoint: Alpha-Beta team sign-off					
Century Link ECC Production system back online (8pm EST) Note: no change to security roles, system message to be applied			Vertex & OpenText will be initiated	Proceed with final Post migration steps		MRP Checkpoint run-thru daily job to be released PPD run to be initiated					

What we really did, our toolset(s)

- Because of the ease of the cloud provider environment we went with a rehearsal concept
 - This allowed fast image retrieval in case of screw-ups, like 'marking the system as 'Data Migration Complete'
- We started with a tool 'FlexBridge' from Protera that allows us to quickly see all the relevant what SAP calls 'Simplification Notes'
- We used SAP CALS for some initial learning of S/4 & Fiori
- We worked in a close proximity team environment, eyeball-to-eyeball mode...

Here's A Couple Examples....

2352383 - S4TWL - Conversion to S/4HANA Material Ledger and Actual Costing



2265093 - S4TWL - Business Partner Approach



Bookmarks

This note comes with attachments.....

- Business Partner Conversion Activities
 - Table of Contents
 - 1 Business Partner Conversion Activities
 - 2 Introduce Business Partner Approach (Customer/Supplier Integration)
 - 3 Prepare Customizing and Mapping Tables for Business Partner Conversion
 - 3.1 Number Assignment
 - 4 Convert Customer/Supplier Data Into Business Partner
 - 5 Appendix
 - 5.1 CVI_UPGRADE_CHECK_RESOLVE
 - 5.2 PRECHECK_UPGRADATION_REPORT
 - 5.3 MDS_LOAD_COCKPIT
 - 5.4 MDS_PPO2

List of Rehearsal System's

Our Rehearsal Systems & Sequencing

Purpose/Comment

Test3 - Initial POC	
Test4 - POC with OpenText operational	
Test5 - Mill Products POC	
Test6 - DevNew	re-snapshot of Production vs old dev
Test7 - Rehearsal for CTS	
Test8 - Final Rehearsal	was not ultimately used
Test9 - Production Cutover	
Test10 - DevOld ('as-is' uplift) *	on hold for now, may not be needed

You Can Too...

- We really DROVE ahead and knew change management would be an issue.
- Latent users who had key screens or reports and how these were handled.
- Some performance issues but nothing major.
- S/4 is still new and evolving, so don't be surprised by surprises.
- Fiori UI is a treasure trove and great for ongoing user – SAP productivity improvements.

Well it's finally here LB Foster is live today the final users came online after a 'soft' opening last Friday.

Overall there about 200 users across 3 time zones & 4 plants/offices, as of this writing we are seeing successful order to shipping sequences, purchasing and approval cycles, MRP using Mill Products and key journal entries being made by Accounting.



Utilizing FlexBridge was initially key in helping the LB Foster team first access the scope of the effort and in one place allow their

business analyst team to interact with the various elements therein.

Their initial analysis of that allowed Protera to quickly created a S/4 Prototype based off their actual production system. Protera then delivered the S/4 converted prototype system on October 15, 2018 and away the project went..... along the way other notable elements were added to this go live:



Moved entire SAP data center from being hosted by CenturyLink to AWS, this included the following systems:

- SAP ECC moved & upgraded to SAP S/4 Hana.
- Business Objects moved and simplified from two to one server (one for Dev, one for Production).
- Re-Integrated SAP Analytics Cloud.
- Disabling Vertex tax interface and re-integrating the latest Vertex tax/cloud based offering vs on-prem server
- Move OpenText & upgraded to S/4 capabilities (one for Dev, one for Production).
- Spun off a Mill Products Prototype system which has come to fruition and is now part of the production process, this also necessitated installation of SAP's LiveCache functionality.
- Fiori Servers were established are in use on Dev & Production.

Multiple Protera colleagues were involved but many thanks early on to Alexi, Patrick then Pete, Jagadeesh & their teams.

A key aspect to the success of this business system migration & conversion effort is that LB Foster did all this with their own existing team and did not have to hire or ramp up a large consulting team. This was made entirely possible by the fact that Protera provided a key business functional resource to give guidance as they moved thru the various business processes.

A second key aspect is the Protera recommended Rehearsal strategy which was a capability provided as a direct result of being in AWS. This allowed the LBF team to quickly spin up a copy of the production snapshot, rehearse the SAP Pre-technical-post S/4 conversion steps and then hone the acumen and address business issues resulting as they proceeded.



Again many thanks to all who were involved, a very nice success story for Protera with LB Foster.

Thank You Team

Take the Session Survey.

We want to hear from you! Be sure to complete the session evaluation on the SAPPHIRE NOW and ASUG Annual Conference mobile app.



Presentation Materials

Access the slides from 2019 ASUG Annual Conference here:

<http://info.asug.com/2019-ac-slides>

Q&A

For questions after this session, contact us at

mramamoorthy@lbfoster.com (309) 989-3901-mobile

chris.ritterhern@secure-24.com (949) 742-2427-mobile

Let's Be Social.

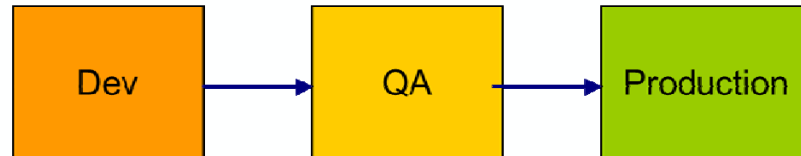
Stay connected. Share your SAP experiences anytime, anywhere.

Join the ASUG conversation on social media: **@ASUG365 #ASUG**

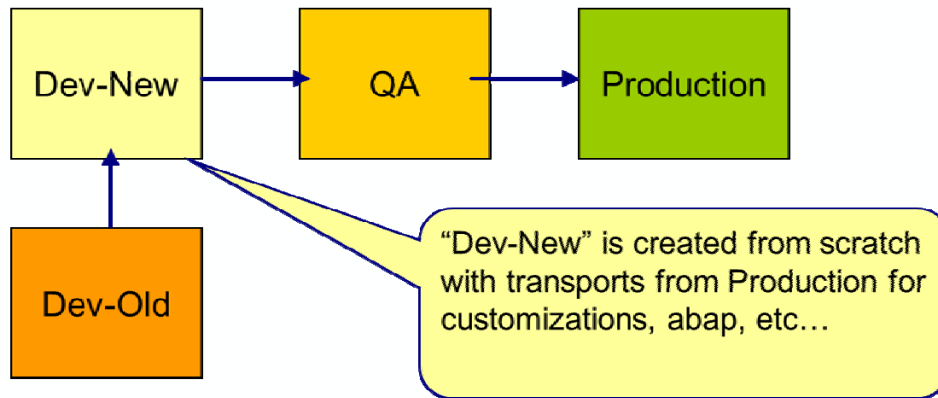


Backup / Temp Slides

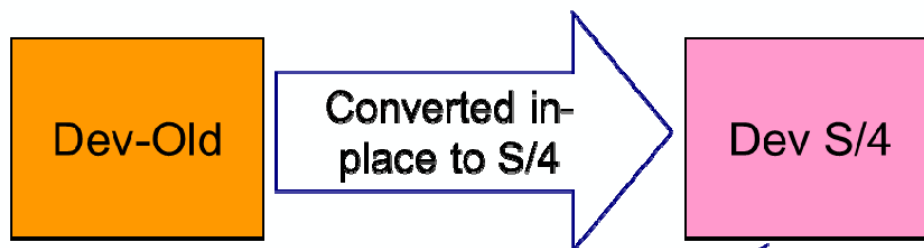
Current Environment Suite-on-Hana



Future State I – S/4 Landscape



Future State II – S/4 Landscape



Any & all old abandoned objects still left in place