

83252: Hybrid integration with **SAP's Integration Platform**

Gayathri Narayana, SAP
May, 2019

PUBLIC

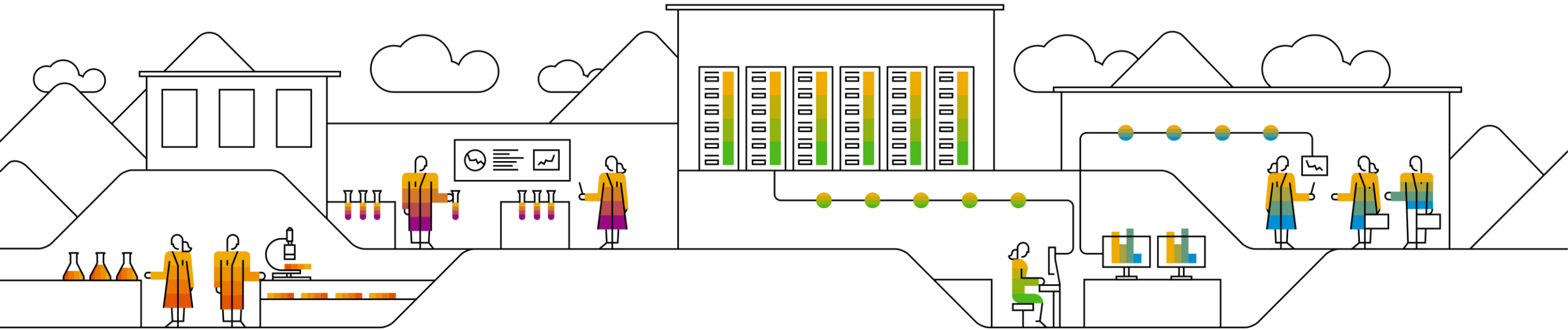
Disclaimer

This presentation outlines our general product direction and should not be relied on in making a purchase decision. This presentation is not subject to your license agreement or any other agreement with SAP. SAP has no obligation to pursue any course of business outlined in this presentation or to develop or release any functionality mentioned in this presentation. This presentation and SAP's strategy and possible future developments are subject to change and may be changed by SAP at any time for any reason without notice. This document is provided without a warranty of any kind, either express or implied, including but not limited to, the implied warranties of merchantability, fitness for a particular purpose, or non-infringement. SAP assumes no responsibility for errors or omissions in this document, except if such damages were caused by SAP intentionally or grossly negligent.

Agenda

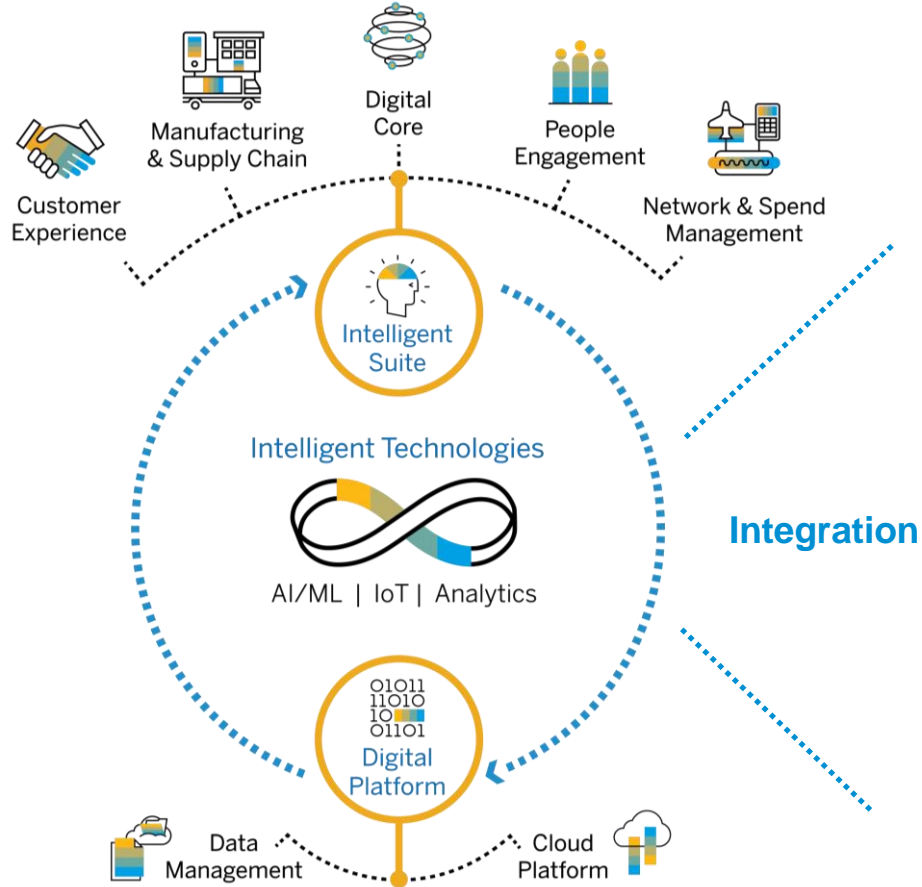
- ❑ SAP Cloud Platform Integration Suite
- ❑ SAP Cloud Platform Integration
- ❑ SAP Process Orchestration

SAP Cloud Platform Integration Suite



SAP's integration strategy for the Intelligent Enterprise

Intelligent Enterprise is an integrated enterprise



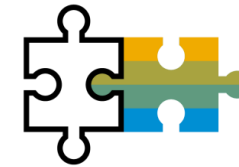
1

Out-of-the-box
integration



2

Open
integration



3

Holistic
integration



4

AI-driven
integration

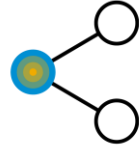


How do we **simplify integrations**?



Out-of-box Integrations

900+ prepackaged
integrations



Simple **Semantic** **APIs**

800+ APIs from SAP
and partners



open connectors for hub-based integrations

175+ connectors to
3rd party apps



Machine learning to simplify integrations

Integration Content
Advisor



Cloud-deployment and **pay-as-you-go** Cloud-native architectures, Cloud credits



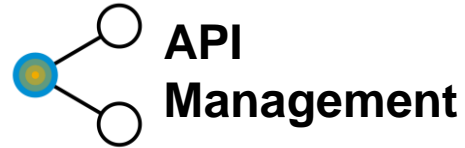
Multicloud deployment offering SAP | hyperscale IaaS | Private cloud

SAP Cloud Platform **Integration Suite**

A modular iPaaS to connect the Intelligent Enterprise



Seamlessly integrate anything, anywhere (A2A/B2B) in real time



Expose your data and processes as APIs and manage their end to end life cycle



Accelerate implementation and maintenance of B2B scenarios using machine learning



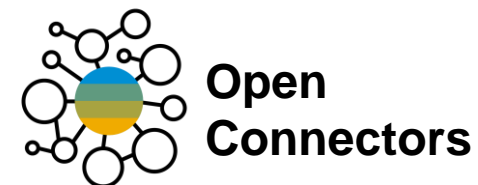
Jump start integration projects with APIs, packaged integration content and adapters



Automate business processes and enterprise decisions



Decouple communication and send messages and events to trigger functions in responsive, event-driven architectures



Accelerate connectivity to third-party applications



Guided, partially automated and role based workflow to ease integrations

Integration & Orchestration services in SAP Cloud Platform

SAP Cloud Platform Integration Suite



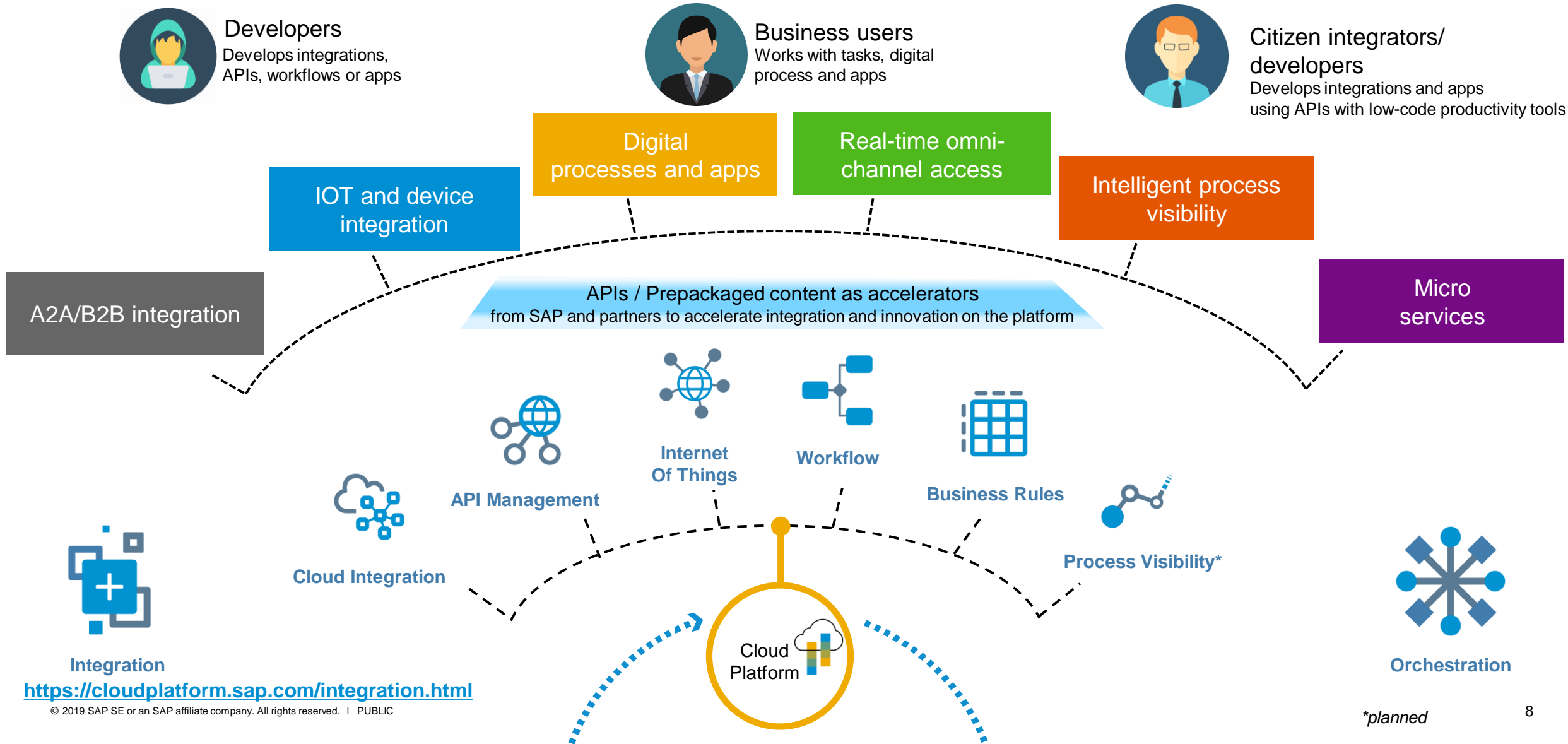
Developers
Develops integrations,
APIs, workflows or apps



Business users
Works with tasks, digital
process and apps



**Citizen integrators/
developers**
Develops integrations and apps
using APIs with low-code productivity tools



<https://cloudplatform.sap.com/integration.html>

CIO Guides for Integration

Two Complementary Guides



CIO Guide I:

SAP Vision for Integrating SAP Applications in Cloud and Hybrid

Describes SAP's long term vision for integration – published in 2017

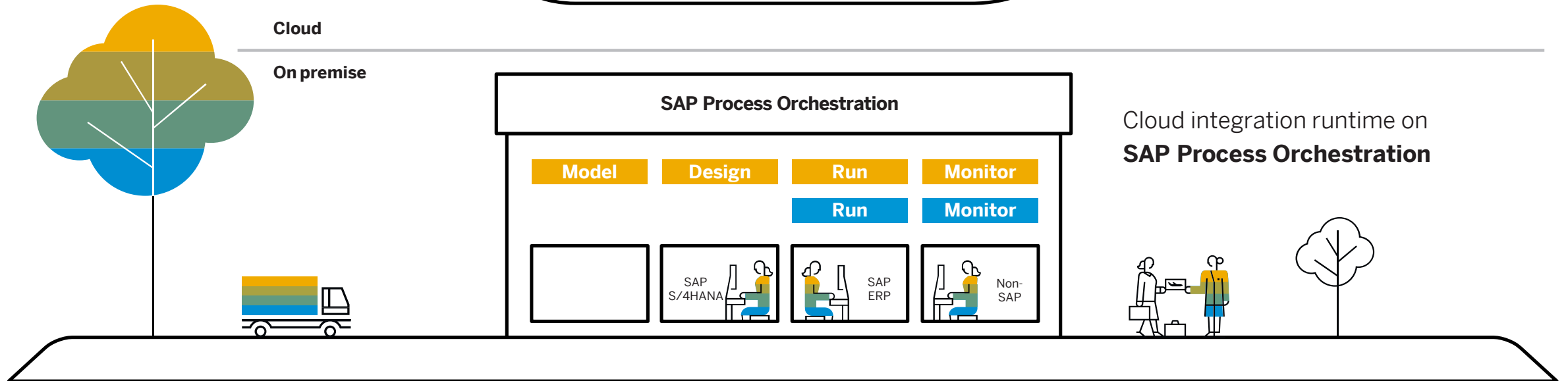
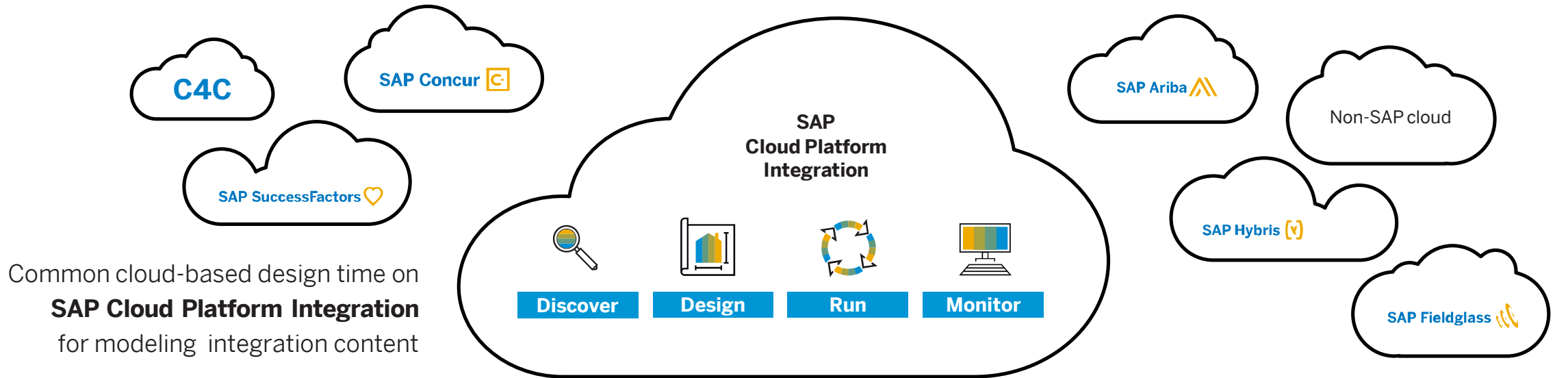
- Integration Challenges and Use Cases
- API Alignment
- Technology Guidance for Process Integration
- Technology Guidance for Data Integration

CIO Guide II: Process and Data Integration in Hybrid Landscapes

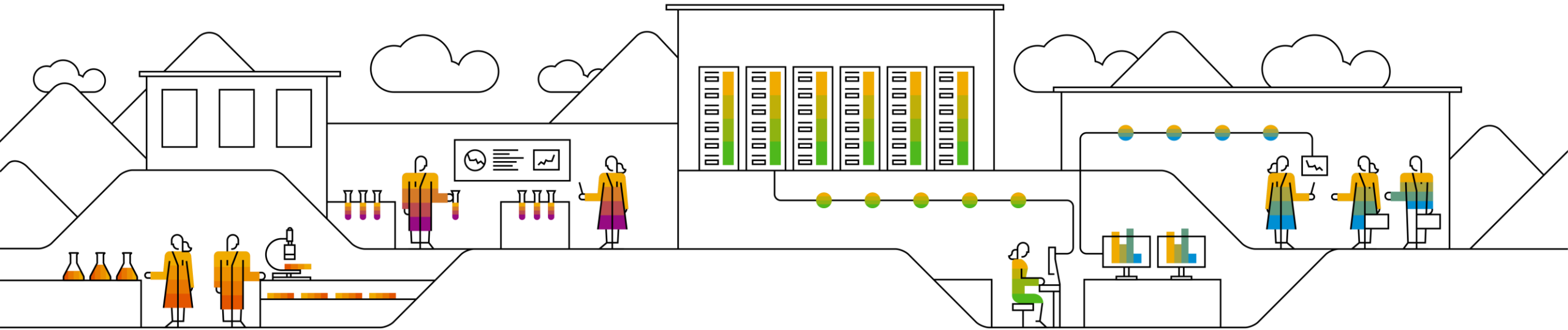
Provides refined guidance based on existing technology portfolio – published SAPPHERE 2018

- SAP API Strategy
- Integration Solution Advisory Methodology (ISA-M)
- Refined Technology Guidance for Process and Data Integration
- B2B Integration
- Integration Automation
- SAP S/4HANA Transition Guidance

Application integration in hybrid environments



SAP Cloud Platform **Integration**



SAP Cloud Platform Integration



Seamlessly connects cloud applications with other SAP and non-SAP cloud and on-premises apps to eliminate data silos and make digital access simple, secure, and scalable.

Integrating hybrid and cloud application

- Intuitive web interface with built-in templates
- Supporting A2A and B2B/B2G scenarios with focus on non-SAP

Cloud technology

- Strong security focus and infrastructure availability
- Access via public OData APIs

Integration content advisor

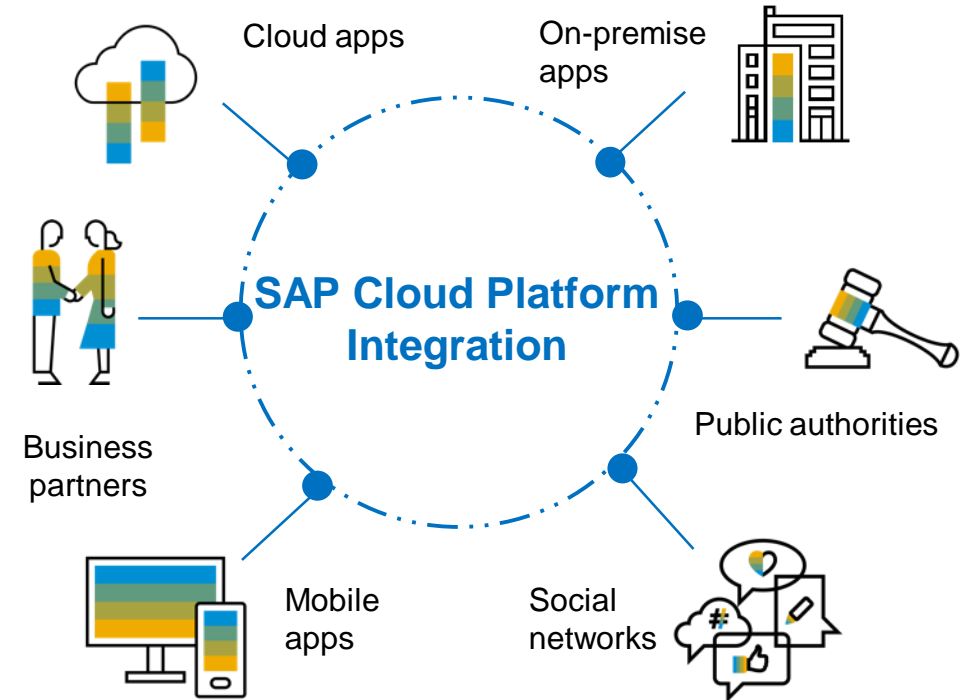
- Crowdsourcing capabilities for creating and maintaining integration content
- Designed to accelerate every interface implementation, to learn continuously, and to reduce efforts by 60% or more

Prepackaged content to accelerate integration projects

- Extension of pre-delivered content to include custom requirements

Ecosystem

- Ability to integrate with business networks
- Open to partners for developing integration content and adapters



Out-of-the-box integrations



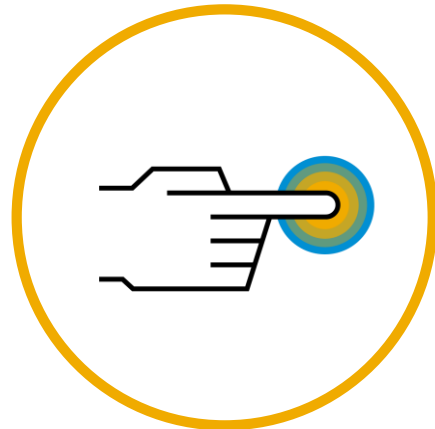
Out-of-box

Search, discover, experience and consume to right APIs from SAP and select partners for your digital transformation projects



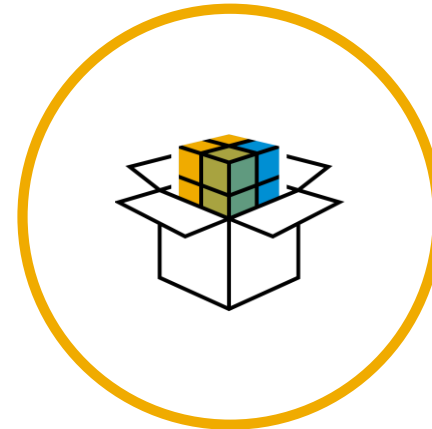
Catalog

Central place for APIs from SAP and its partners



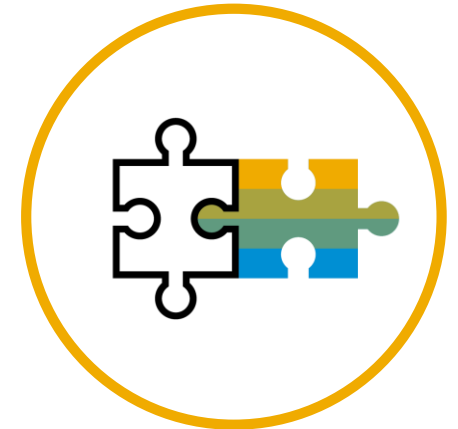
API sandbox

One click-test experience for developers via API sandbox



Prepackaged accelerators

Integration packages to integrate APIs



Easy consumption

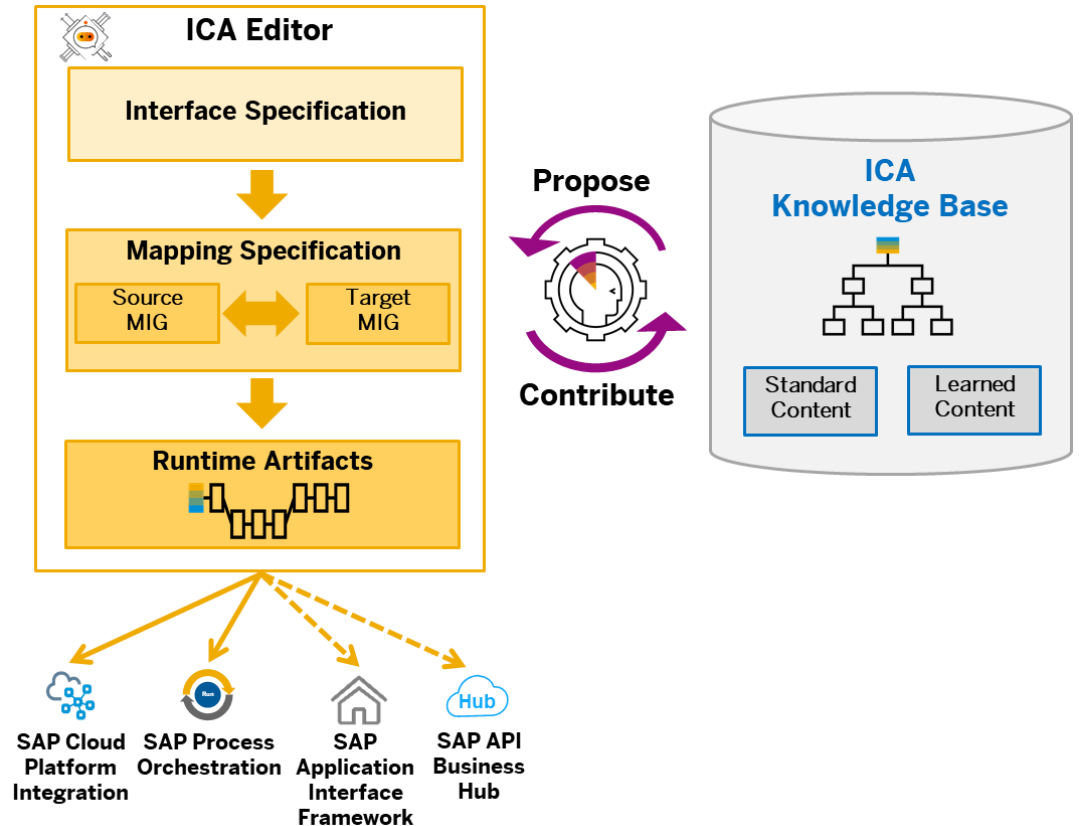
Integration with developer IDE and code generations

Machine learning to simplify integrations

Integration content advisor for SAP Cloud Platform Integration (ICA)

Intelligent content management system

- **Central integration knowledge base** for integration wherein all crowdsource based learnings from interface customizations and mappings are stored
 - SAP meta models of APIs
 - International standards
- **Proposal service** via machine learning & crowd sourcing
- **Automatic generation** of
 - Documentation
 - Runtime artifacts
 - Validation rules
- **Community collaboration** for creating and maintaining tailored integration interfaces and mappings



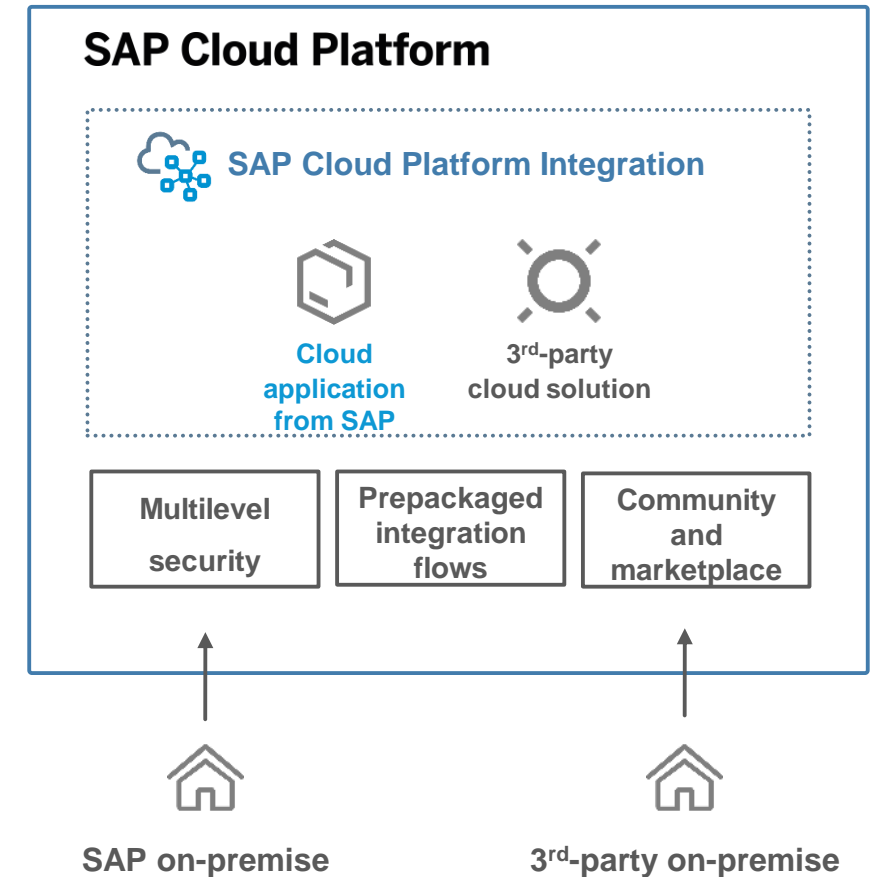
ICA is designed to accelerate every interface implementation, to learn continuously and to **reduce efforts by 60% or more.**

SAP Cloud Platform Cloud Integration



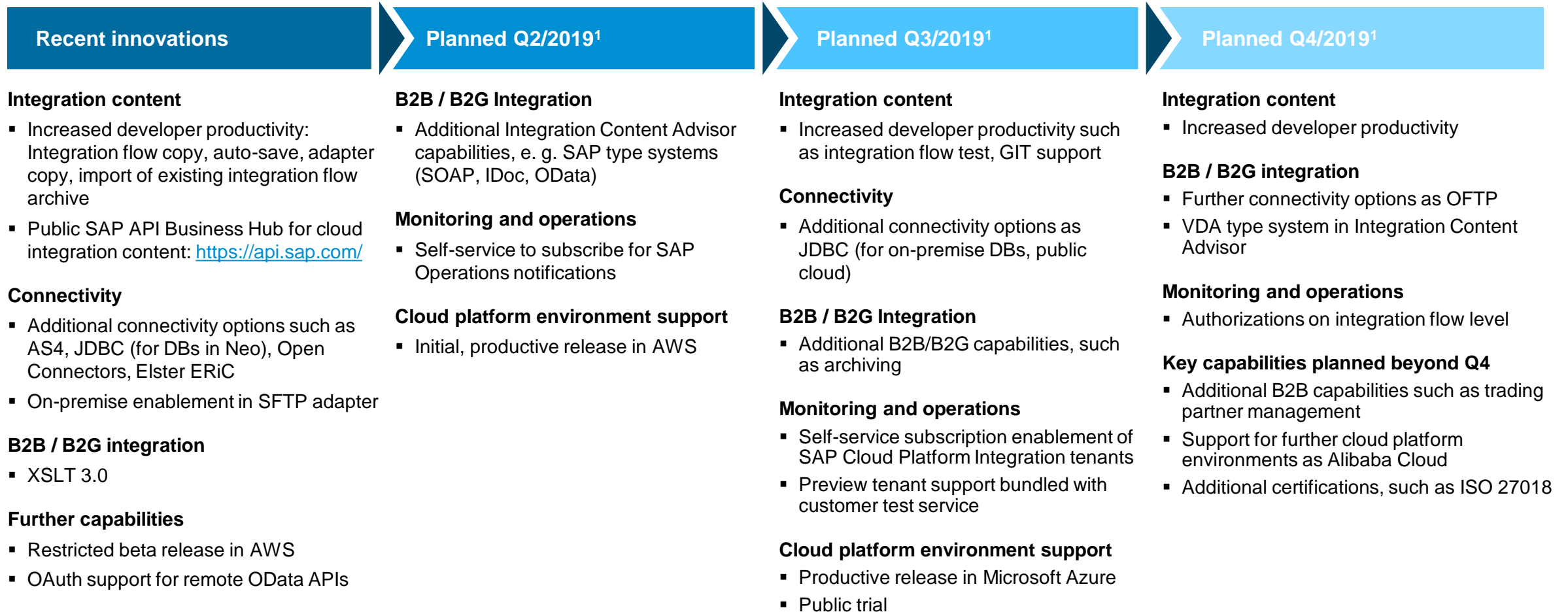
Product Innovations

- **SAP Cloud Platform Open Connectors** to simplify connectivity to 175+ 3rd party applications
- **Increased developer productivity:** API based integration flow generation, version migration, integration flow copy, auto-save, adapter configuration copy
- **OData APIs for Integration Flows**, e. g. update, deploy
- **Availability on AWS** (restricted beta)
- **Self-service of SAP Cloud Platform Integration tenants** for consumption-based license model
- **Activating Enterprise Messaging Capabilities** for any cloud integration license; includes AS2, JMS, XI (with JMS queues) adapters
- Regression tests of customer integration flows **and Cloud Integration Automation Service.**



SAP Cloud Platform Integration

Product road map overview



1. This is the current state of planning and may be changed by SAP at any time without notice.

Search also for "SAP Road Map for Cloud Integration":
<https://sap.com/roadmaps>

SAP Cloud Platform Open Connectors

Simplify connectivity to 175+ 3rd party applications

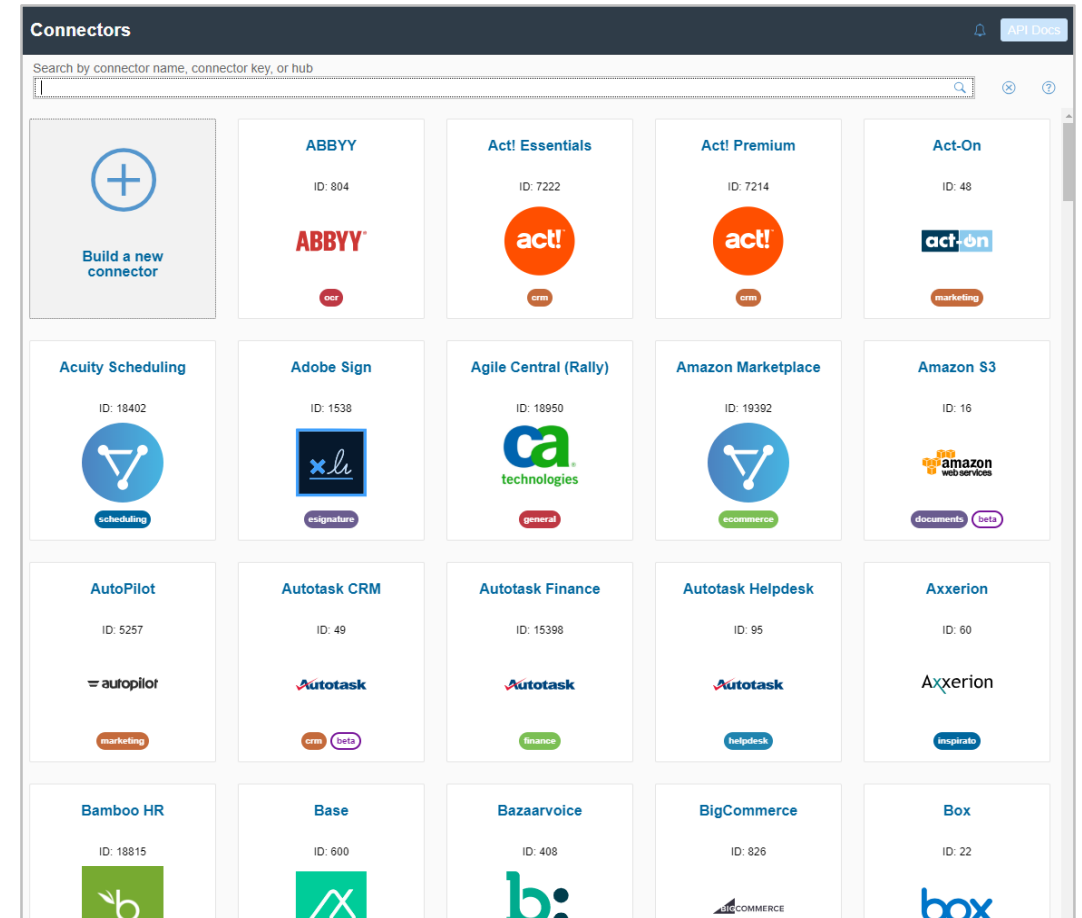
CAPABILITIES

- Feature rich connectors to 175+ non-SAP applications
- Select connectors you need and authenticate via the providers
- Build your own connector with Connector builder with normalized features including authentication, pagination, errors and search



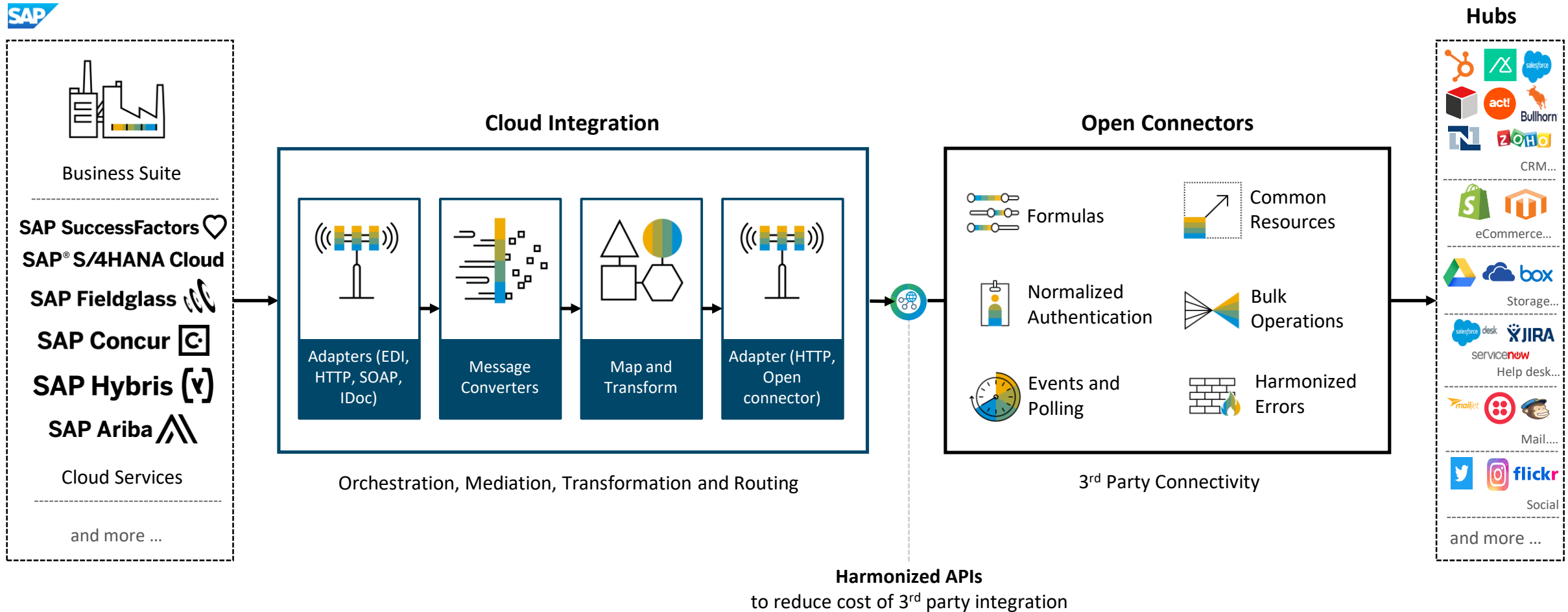
BENEFITS

- Easily connect to top SaaS applications in use
- Open RESTful APIs and JSON data format embeddable easily within any product
- Power your business agility incorporating real time data from non-SAP applications

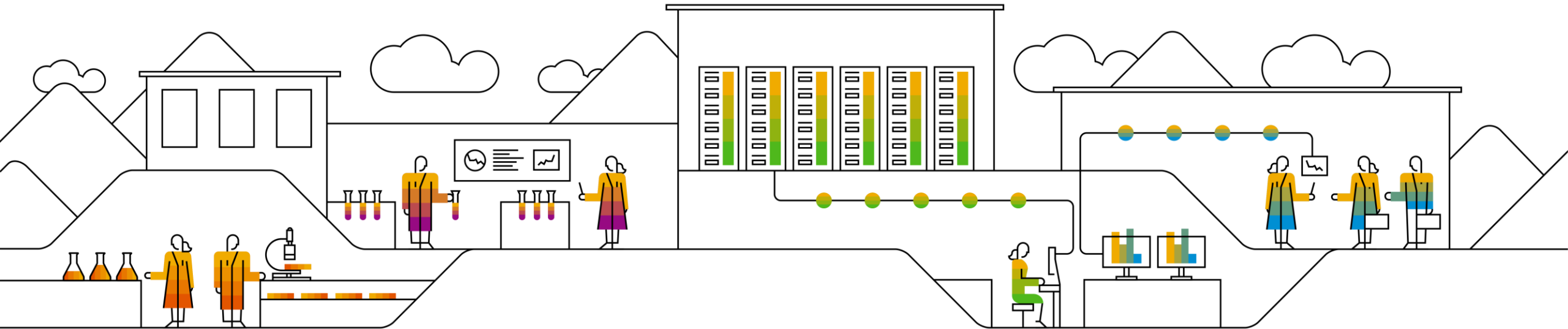


SAP Cloud Platform Open Connectors

Hub-based (1 → N) Integrations: Simplicity with harmonized APIs

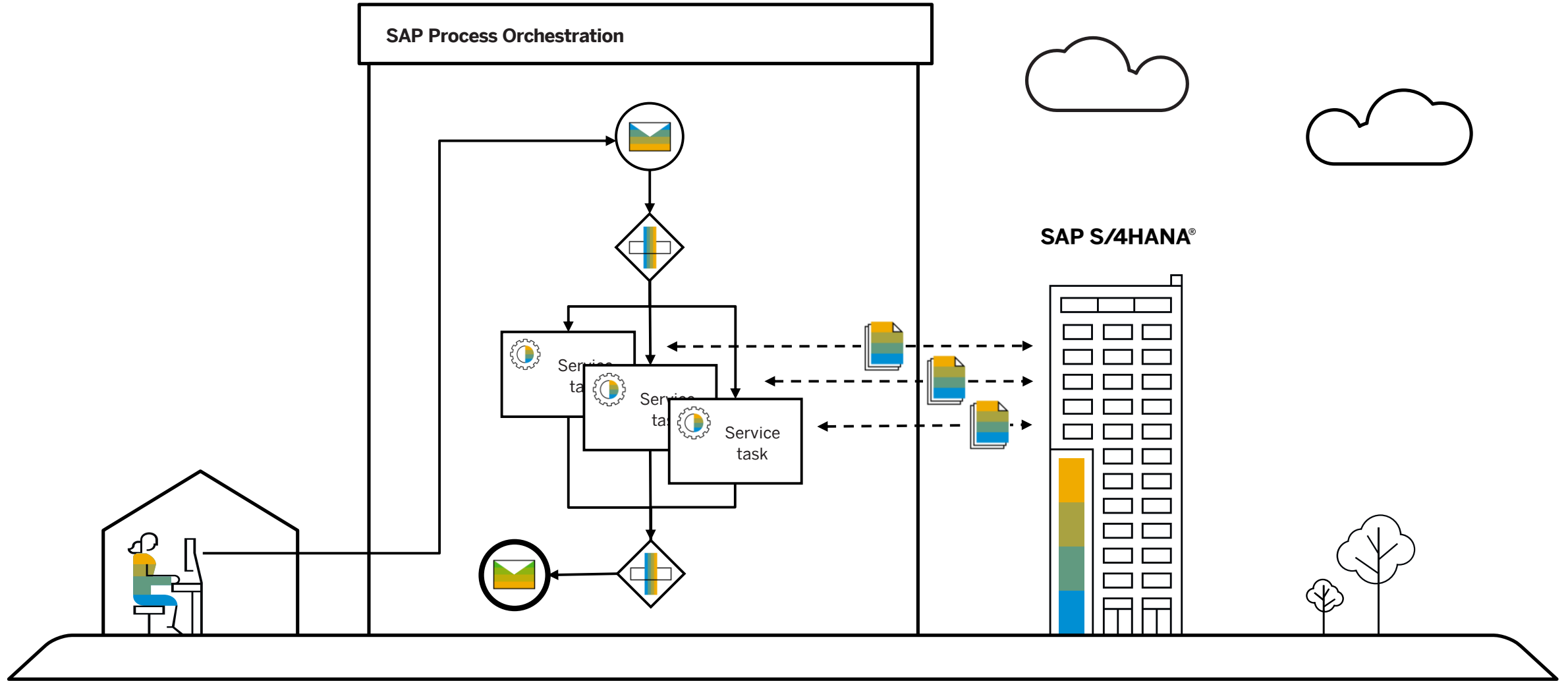
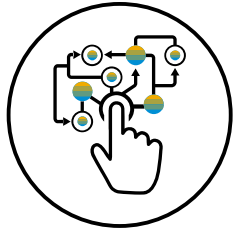


Hybrid Integration with SAP Process Orchestration



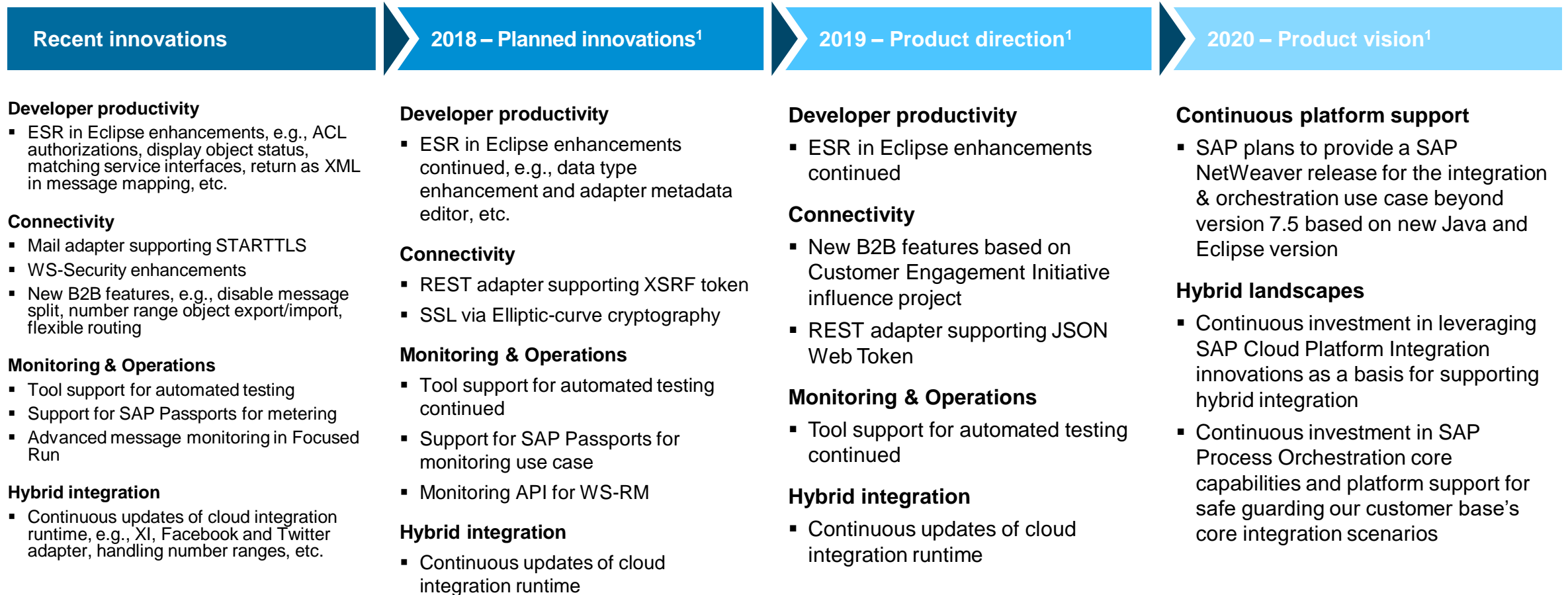
Build and run

Service composition scenario to gather product information



SAP Process Orchestration

Product road map overview – Key innovations



1. This is the current state of planning and may be changed by SAP at any time without notice.

Summary

- ❑ SAP Cloud Platform Integration and SAP Process Orchestration form the cornerstone of SAP's process centric integration strategy.
- ❑ Both offerings are complementary and can be leveraged together for Hybrid integration scenarios.

Take the Session Survey.

We want to hear from you! Be sure to complete the session evaluation on the SAPPHIRE NOW and ASUG Annual Conference mobile app.



Presentation Materials

Access the slides from 2019 ASUG Annual Conference here:

<http://info.asug.com/2019-ac-slides>

Q&A

For questions after this session, contact me at
gayathri.narayana@sap.com

Let's Be Social.

Stay connected. Share your SAP experiences anytime, anywhere.

Join the ASUG conversation on social media: **@ASUG365**

#ASUG



Thank you.

Contact information:

Gayathri Narayana
gayathri.narayana@sap.com