



S/4HANA Cloud - The Intelligent ERP

Marco Valencia

VP, SAP S/4HANA Cloud Product Management, SAP Labs, LLC.

Leonardo De Araujo

VP, Beyond Technologies

Session ID #83650



S/4HANA Cloud - The Intelligent ERP

Marco Valencia, SAP
May 2019

PUBLIC

Agenda

- The Intelligent Enterprise
- Advantages in SAP S/4HANA Cloud
- Functional and Technical Innovation Update and Roadmap
- Deployment strategies

Top trends in ERP

The move to cloud enables intelligence and more

Cloud has created the opportunity to quickly take advantage of advances in intelligence and user experiences while encouraging customers to choose fit to standard configurations with industry best practices



SaaS and Cloud Enabled

- Anywhere, anytime access
- Faster time to innovation
- Faster time to value
- Packaged, fixed-price, fixed-time implementations
- Suitable to subsidiaries and smaller customers
- Focus on customer satisfaction



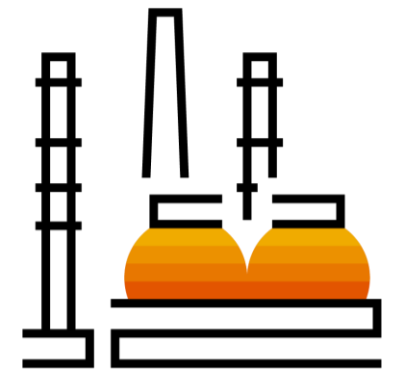
Intelligence

- Machine learning
- Advanced analytics on curated data sets
- Benchmarking company performance against peers using anonymized SaaS data
- Human tasks reduced as technology does more



UX Improvements

- Intuitive workflows
- Interactive designs
- Social collaboration
- Reduced human interaction
- Voice-enabled
- Augmented reality



Industry Best Practices

- Pre-configured vanilla setups are just fine; choosing fit to standard over customization
- Built-in industry features – both horizontal apps and industry-specific modules
- Industry- and role-specific dashboards and KPIs
- Learning from prior cloud implementations

So, how do you gain the agility your business crucially needs?

SAP S/4HANA

Your trusted path to an intelligent enterprise

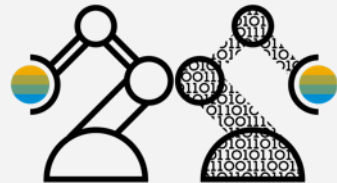
Digital Age User Experience

Digital assistance and natural language conversations for increased productivity and user satisfaction



Intelligent Automation

Artificial intelligence and robotic process automation eliminate more than half of manual tasks

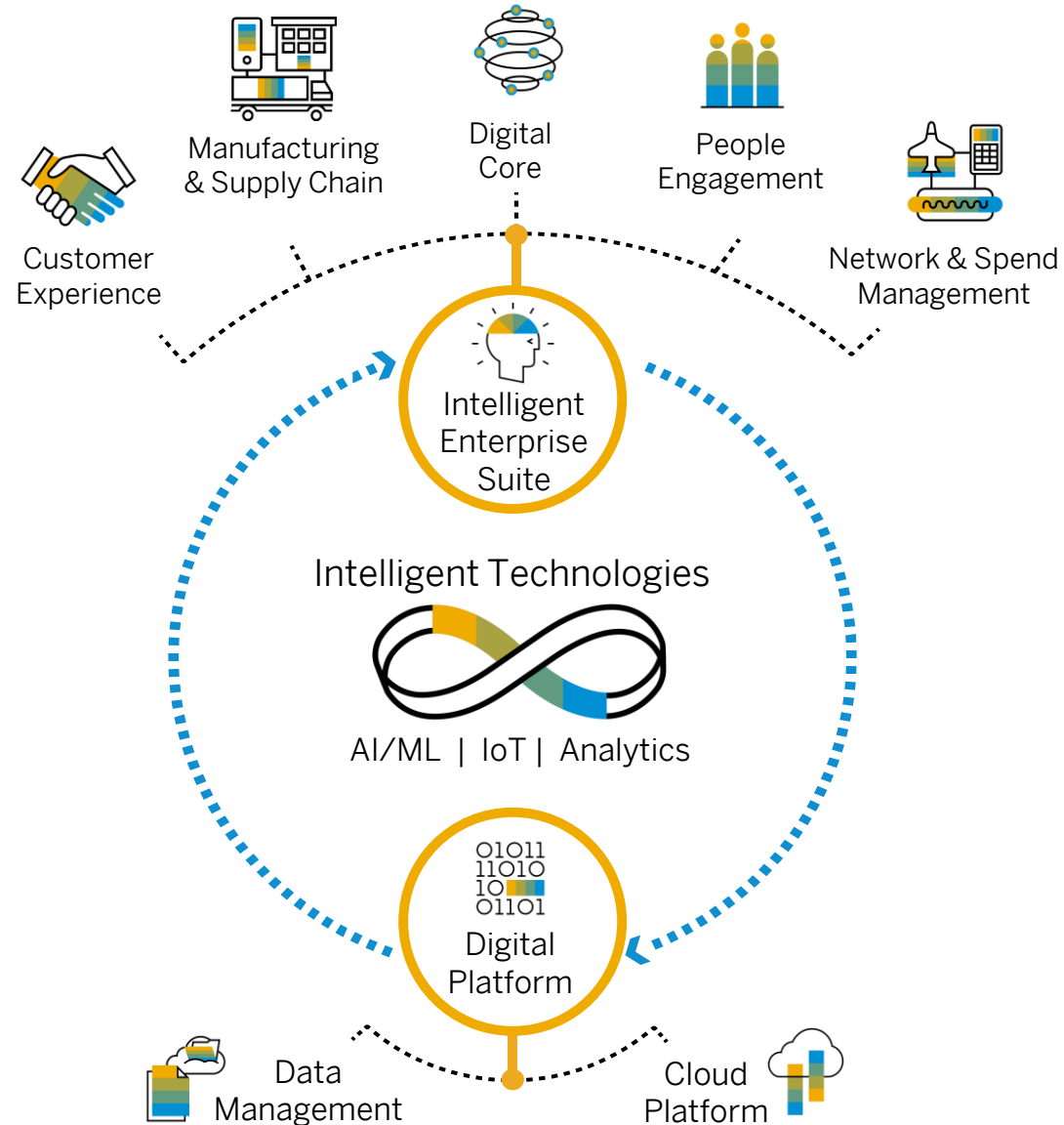


End-to-end Analytics

Context aware, real time, predictive insights so you can make better decisions, faster



SAP's Strategy of the Intelligent Enterprise

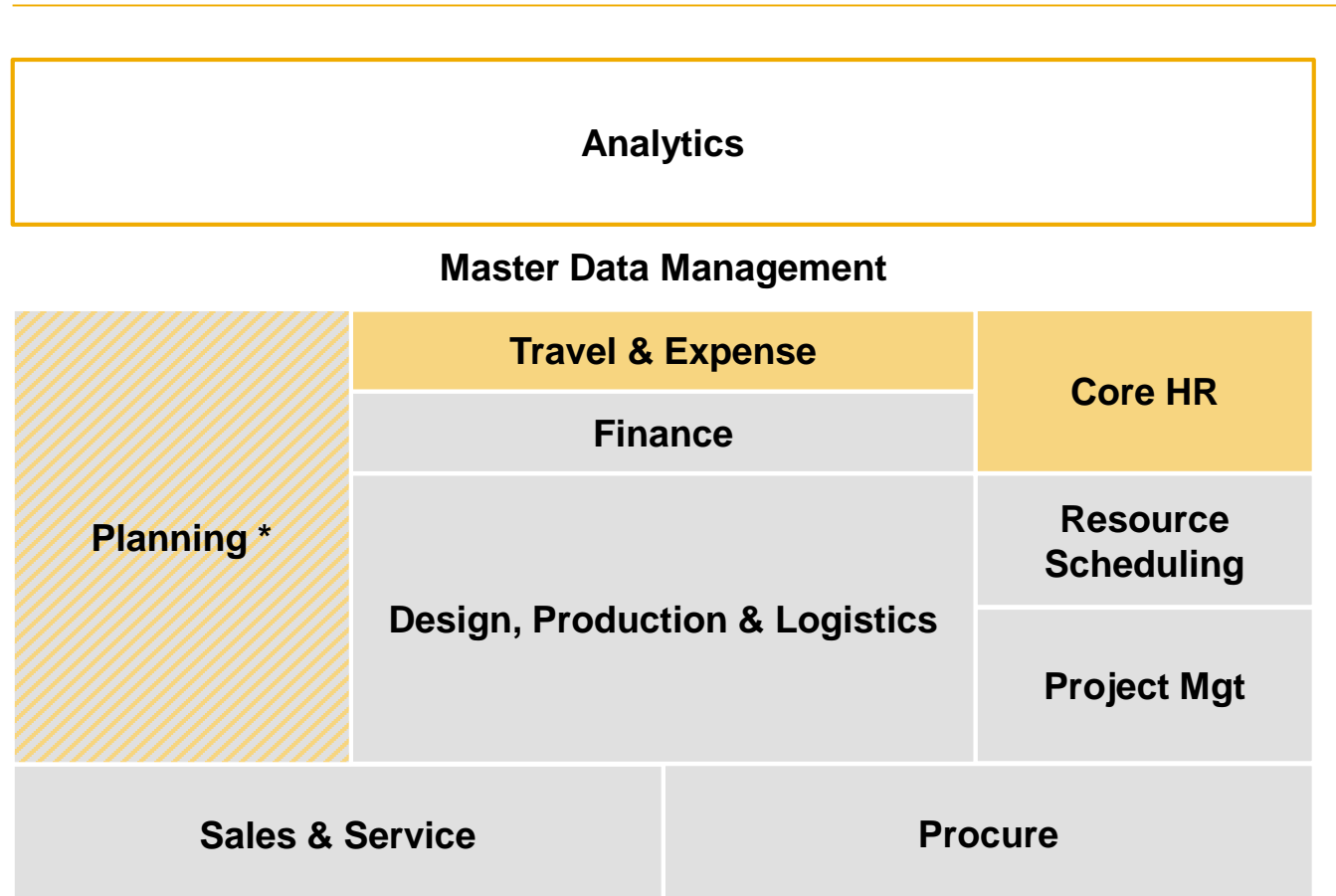


THE INTELLIGENT
ENTERPRISE features 3
KEY COMPONENTS:

- 1 Intelligent Enterprise Suite
- 2 Intelligent Technologies
- 3 Digital Platform


We are creating a new market standard by defining the innovative core ERP, differentiating through functional completeness and intelligence

SAP's definition of Core ERP




Intelligent ERP

Next-Generation UX




- Conversational User Experience (UX)
- Business Context Awareness
- Self-learning system based on ML

End-to-end analytics



- One Analytics Platform with real-time insights
- One User Experience across real-time planning, analysis, and execution
- Broadest Analytical Support

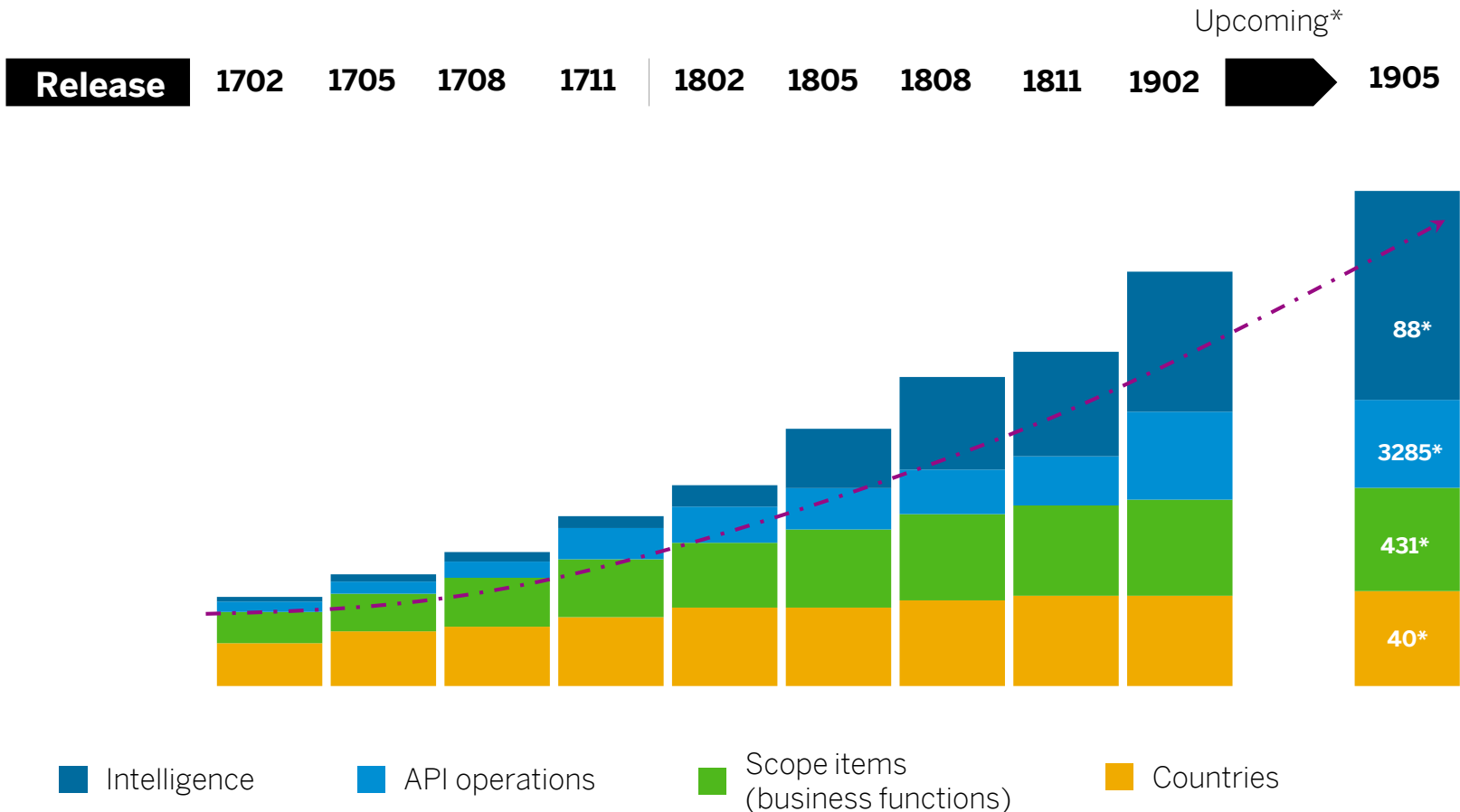
Intelligent automation



- Artificial Intelligence
- Robotic Process Automation
- Continuous learning and adaptive processes

SAP S/4HANA Cloud

Evolving at cloud speed



- 4 quarterly innovative releases per year
- Finance-centric administrative ERP built to deliver value to all customers
- Strong 2-tier ERP capabilities
- Selected industry-specific functionality
- Unmatched international support (40 countries* and 22 languages)

*This is the current state of planning and may be changed by SAP at any time without notice.

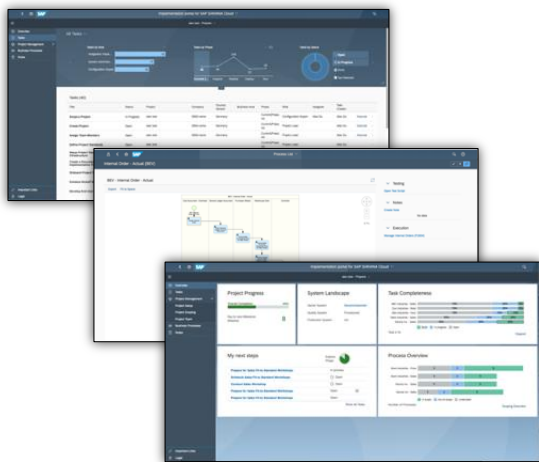
SAP S/4HANA Cloud 1905

Release Flashlights

SAP Activate

Prescriptive Deployment Guidance and Business Processes

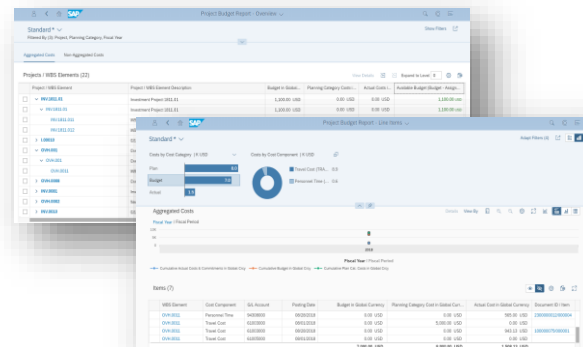
Customers get access to SAP Activate in implementation portal for SAP S/4HANA Cloud. Project team members will access the business process models and test scripts directly in the application. Users will have access to up to date prescriptive and personalized guidance for deployment of SAP S/4HANA Cloud 1905 in form of tasks with associated accelerators and templates. Users will have ability to track progress using the implementation portal.



Financials

Reduce finance costs with Active Budget Availability Control for Cost Centers

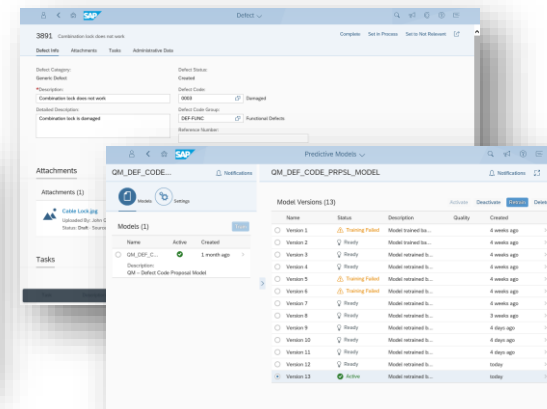
Avoid overspending with the new Fiori app *Cost Center Budget Report*. You now have the possibility to actively control the budget both for generic / overall budget or a budget for specific cost buckets. You can define tolerance limits on your budgets, as well as decide what message should be triggered in case the tolerance limit is exceeded. The limit check is activated by purchase requisition, purchase orders and primary postings of journal entries.



Manufacturing

Reduce the cost to support quality management by predicting the defect code

Defect handling using machine learning capabilities perfectly supports the quality technician in his daily work. Using SAP Fiori app *Record Defects* on a mobile device, the technician can enter a text to describe the defect. The app will then propose the best matching defect codes automatically, hence increasing the data quality of all recorded defects. This is important for regular evaluations in order to detect defect frequency and trigger improvement activities.

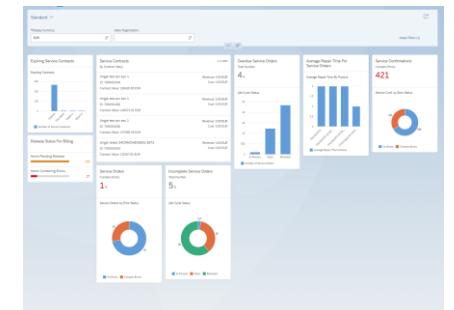


Service Management

Increase margin with standalone service management

Reduce service delivery and support cost with introduction of stand alone back office execution for the service processes with ability to handle service order management and service contract management independently in SAP S/4HANA Cloud.

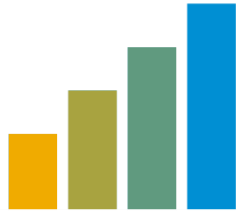
With this release, you can improve customer satisfaction with ability to set up the pricing agreements, have index based pricing and price escalations. You can automatically create purchase orders for spare parts required for service orders and link the service orders to service contracts. Finally, you can have credit memos and tie up billing with event based revenue recognition.



Key innovations do not reflect licensing

SAP S/4HANA Cloud 1905

What's new – Scope Items



26

New Scope
Items

~100

Changed Scope
Items

~430

Complete Scope

Finance: Bond Management (3WY), Bond Management - Group Ledger IFRS (3WZ), Bond Management - Group Ledger US GAAP (3X0), Contract Accounting - Variant Configuration (3L8), Contract-Based Revenue Recognition - US GAAP (3VS), General Indirect Tax for the Canary Islands (3SS), Group Reporting - Predictive Consolidation (3JP), Hedge Accounting for FX Forward - Group Ledger US GAAP (3X3), Hedge Accounting for FX Forward – Local GAAP (3X1), Hedge Accounting for FX Option – Group Ledger US GAAP (3X4), Hedge Accounting for FX Option – Local GAAP (3X2), Machine Learning for Accruals Management (3NF), Predictive Analytics Model Training - Finance (30K)

Manufacturing: Inbound Storage Tank Management - Process Manufacturing (3UK), Just-In-Time Supply to Customer from Stock (2EM), Make-to-Stock with Co- and By-Products - Process Manufacturing (3L7), Make-to-Stock with Silo Material - Process Manufacturing (3UL)

Asset Management: Integration with Asset Central Foundation (3YE)

R&D/Engineering: Safety Data Sheets in Sales (3VQ), Manage Safety Data Sheets for Products (3VR)

Sales: Internal Commissions Settlement with SAP Sales Cloud (3TD), Return Order Processing for Non-Stock Material (3TE), Sales Scheduling Agreements (3NR)

Sourcing and Procurement: Image-Based Ordering (3UH)

Supply Chain: Resource Management in Warehousing (3W0), Warehouse Kanban Supply into Production (3VT)

SAP S/4HANA Cloud 1905 Localization

Unlocks relevance and drives global growth

SAP Best Practices for SAP S/4HANA Cloud

40 Countries:

Australia, Austria, Belgium, Brazil, Canada, China, Denmark, France, Finland, Hong Kong, Germany, Great Britain, Hungary, India, Indonesia, Ireland, Italy, Japan, Luxembourg, Malaysia, Mexico, New Zealand, Netherlands, Norway, Philippines, Poland, **Portugal***, Romania, **Russia***, Saudi Arabia, Singapore, Spain, South Africa, South Korea, Sweden, Switzerland, Taiwan, Turkey, United Arab Emirates, USA

22 Languages:

Arabic, Chinese (simplified), Chinese (traditional), Danish, Dutch, English, Finnish, French, German, Hungarian, Italian, Japanese, Korean, Malay, Polish, Portuguese, Norwegian, Russian, Spanish, Swedish, Turkish, Romanian

Localization of Treasury and Risk Management (TRM)

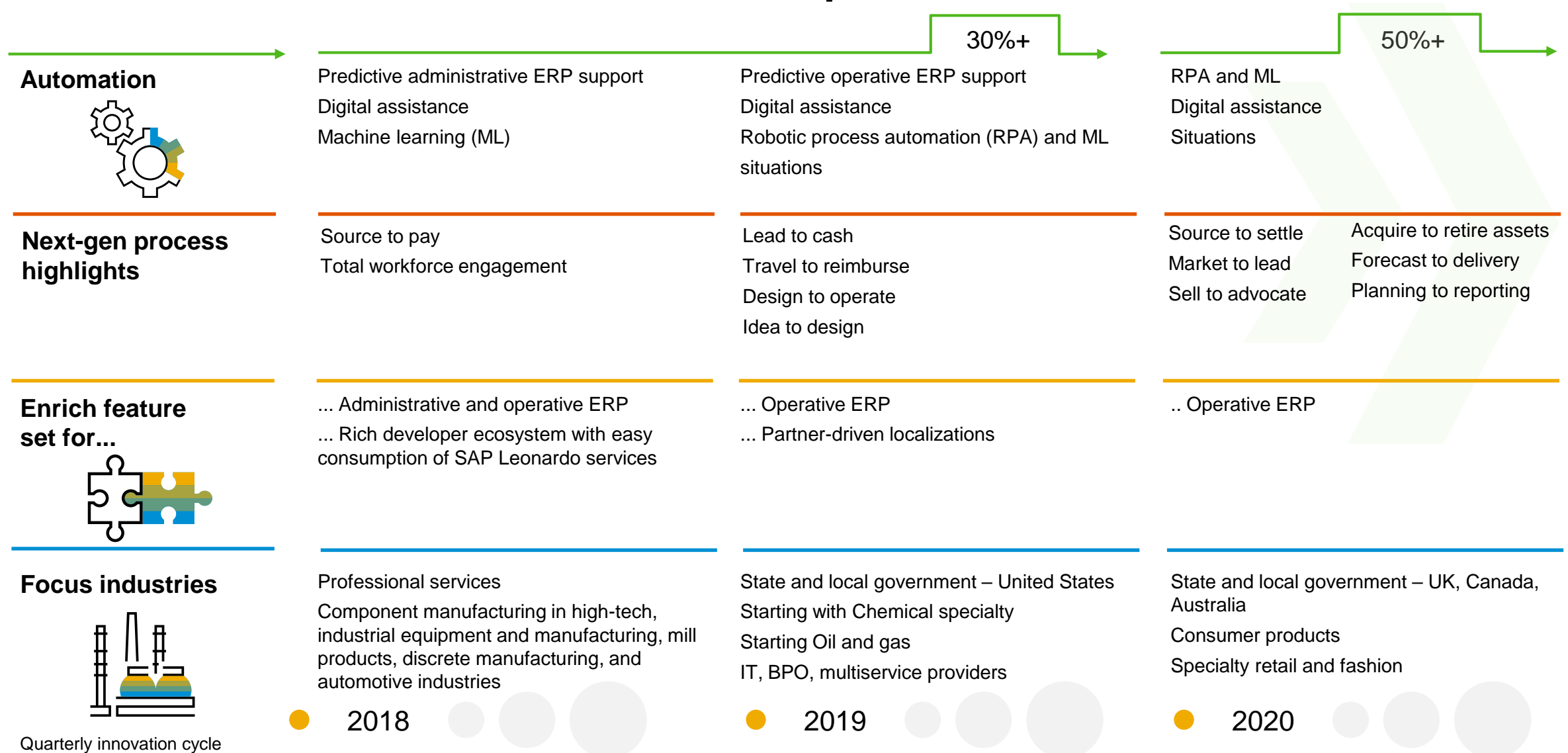
4 New Countries*:

France, Mexico, Netherlands, Sweden

For more information on TRM, refer to the product documentation at <https://help.sap.com> under [SAP S/4HANA Cloud](#) > Finance > Treasury Management > Treasury and Risk Management

***New in 1905**

2019–2020 SAP S/4HANA Cloud road map overview



Quarterly innovation cycle

This is the current state of planning and may be changed by SAP at any time without notice.

Massive Modifications have pushed many ERP customers past the point of **no return**

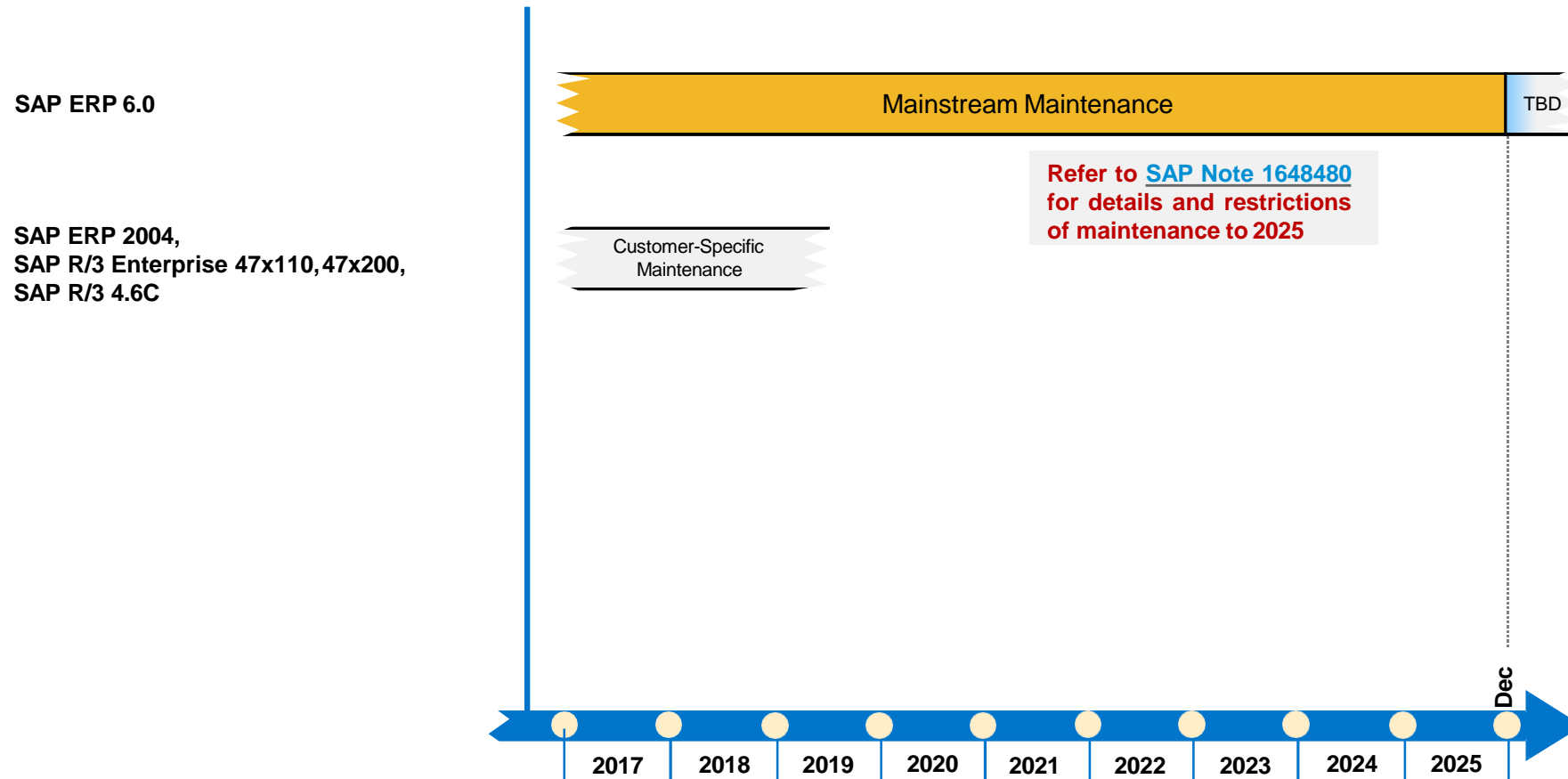
Sins of past ERP implementations

- Only 20% of existing modifications might be used
 - Almost impossible to identify the 80% of modifications not used anymore or never been used
 - Even if these modifications can be identified, still probable risks of hidden dependencies
- ⇒ No Deletion
- ⇒ Extensive, time-consuming testing
- ⇒ Falling behind on upgrades and EHP implementations

Massively modified systems have become unsustainable to the point where IT spends 80% of their resources on keeping the lights on



Release and Maintenance Strategy – SAP ERP



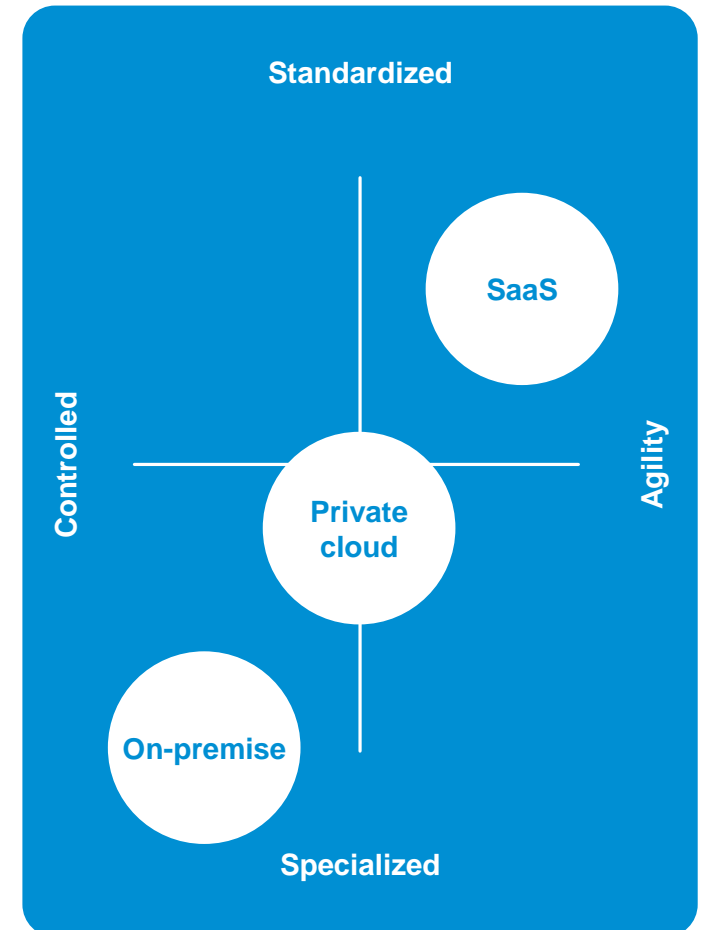
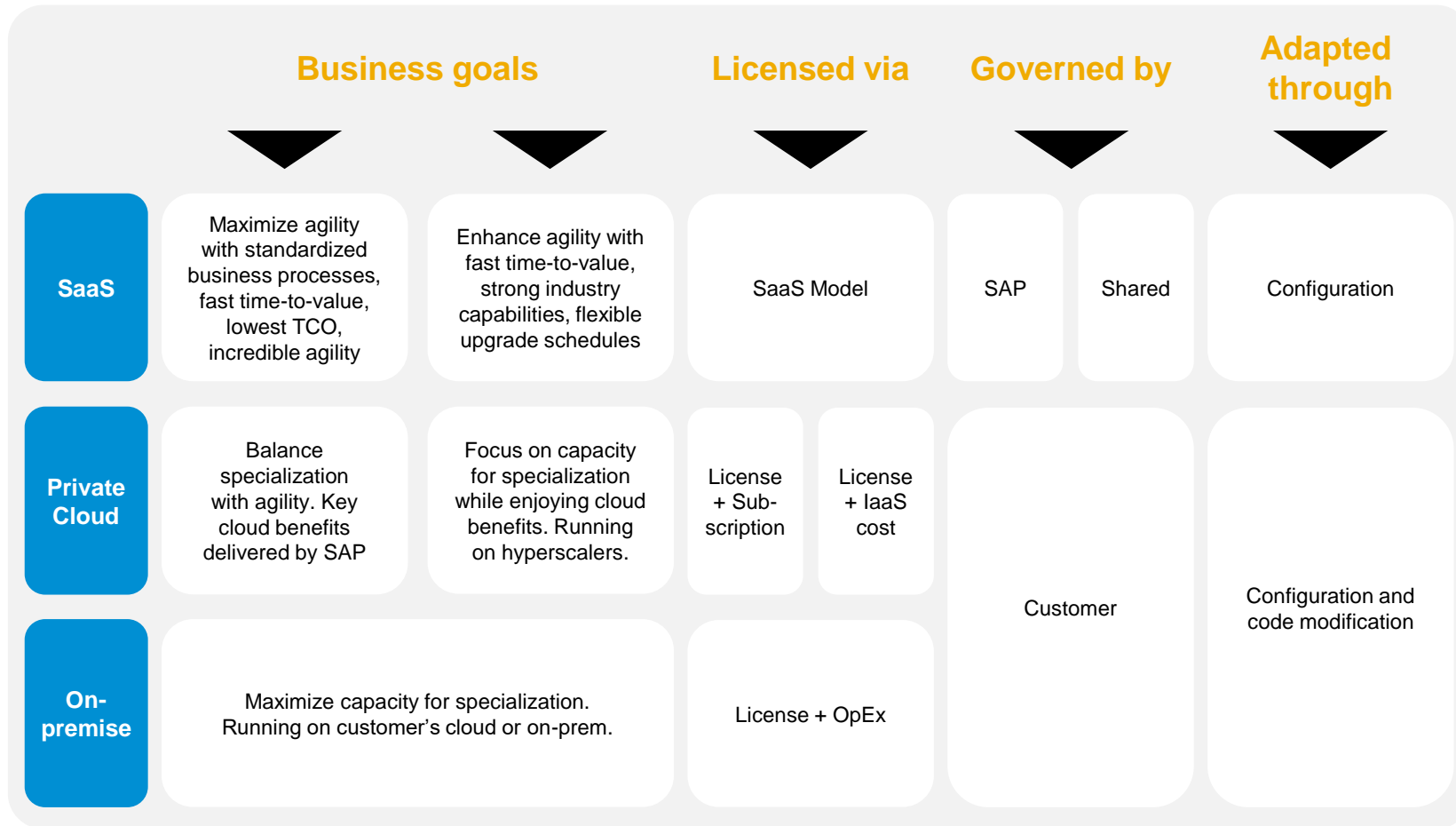
This strategy is also valid for **add-on applications** and **SAP enhancement packages** based on the releases above.

* Overall payment is SAP support fee plus additional fee of 2% or 4% of the maintenance base per year.

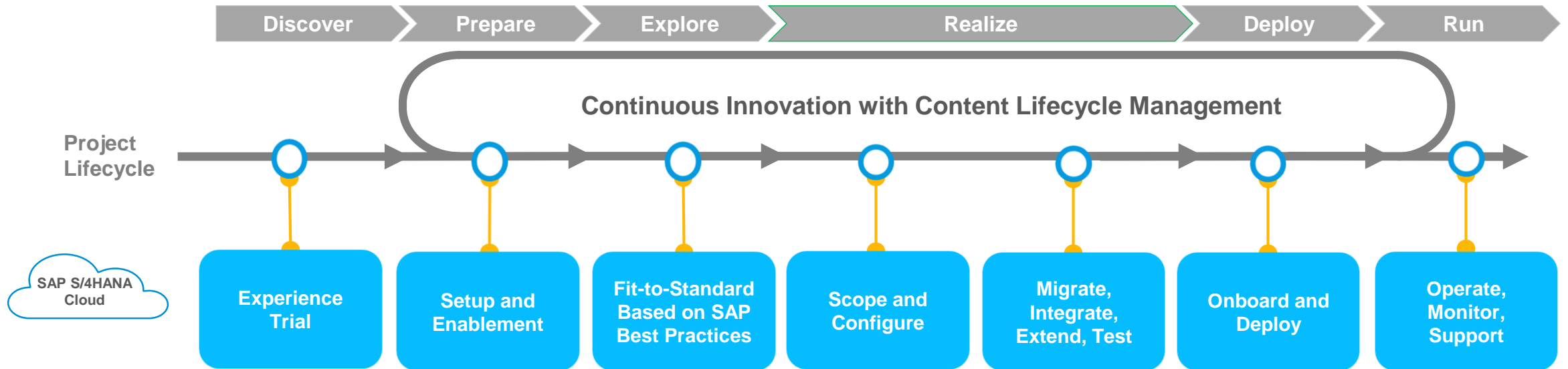
- Mainstream maintenance
- Customer-specific maint.

SAP Offers Choice for the SAP S/4HANA Cloud Journey

Only SAP S/4HANA offers a consistent, intelligent ERP solution across all landscapes, working in harmony so you can better leverage hybrid scenarios (e.g., 2-tier, group reporting in the cloud, etc.)



The Road to SAP S/4HANA with SAP*ACTIVATE*

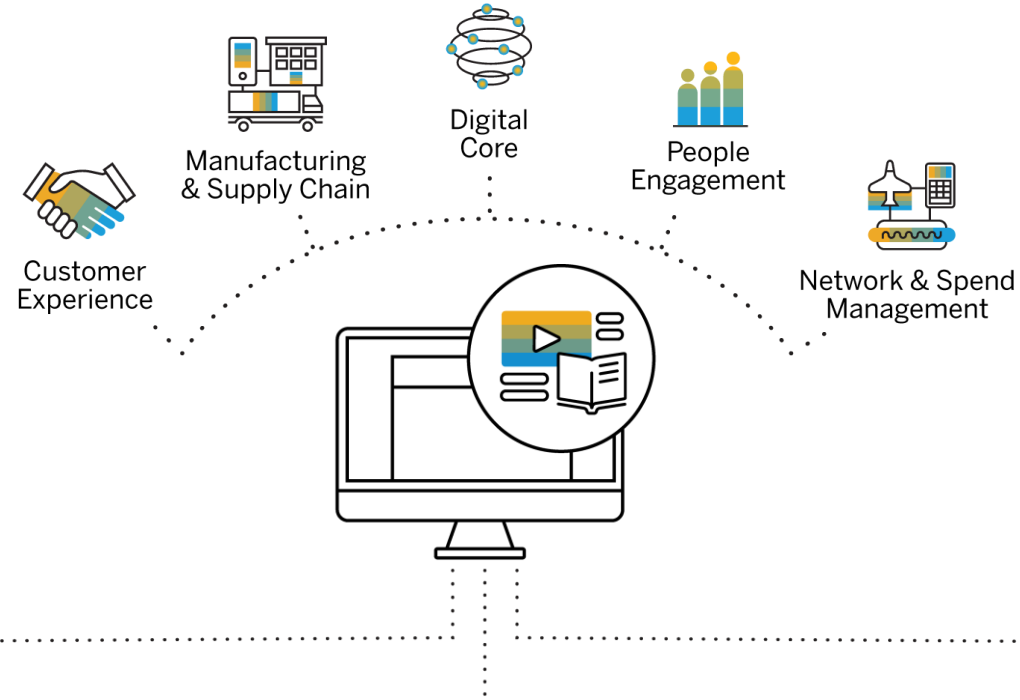


System Landscape



SAP Enable Now Framework for SAP Cloud Solutions

Accelerate your transformation to an intelligent enterprise with a confident, skilled, and productive workforce



SAP Cloud Enablement

- Standard, always up-to-date training content included
- In-app learning, embedded in SAP Cloud software – at no extra cost
- Contextual help to assist users in moment of need

Customization Software

- Option to license state-of-the-art SAP Enable Now software to build custom onboarding and continuous learning programs
- Build new content or adapt existing content, on your own
- Embed your training into SAP Cloud solutions

Enablement Services

- Professional services from SAP Education or SAP partners are available to help you create or adapt new custom content
- Approved partners can create, manage, and deliver on all your enablement needs

Summary



Business Value Creation

-
- Industry-enablement and –specific scenarios
 - Global regulatory, language, and data residency scenarios
 - Digital core augmented by SAP cloud services



Intelligent ERP

-
- Automation through Artificial Intelligence
 - Digital assistant
 - Predictive analytics



Trust

-
- Data Privacy
 - Ensure Compliance
 - Data protection/Security



Open and extensible

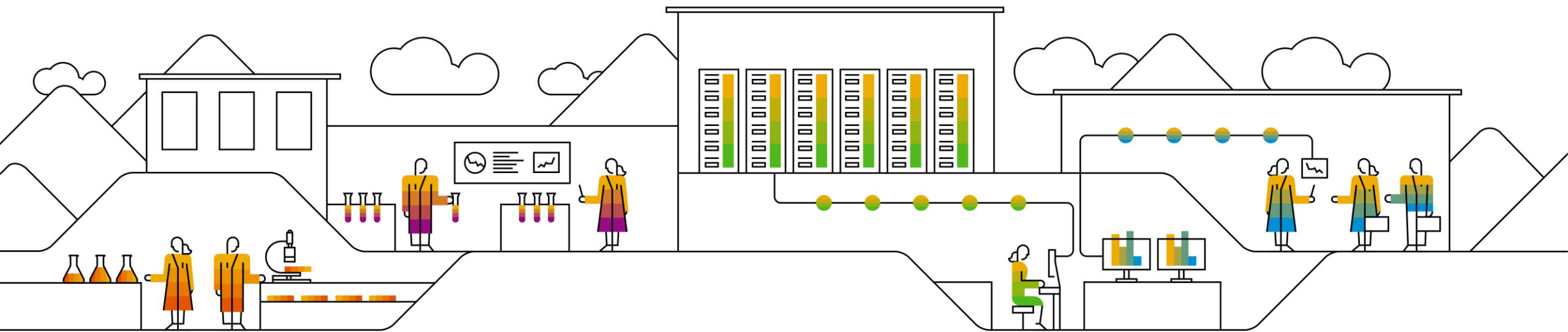
-
- Open APIs
 - Extend on the SAP Cloud Platform with specific SDK
 - Any device and any browser



Rapid Innovation

-
- Simplified, scalable meta data platform
 - Continuous adoption
 - Customer-driven innovation

Beyond Technologies



WHAT WE DO



SAP Functional Business & Services Consulting



Retail Acceleration Services



Business Intelligence & Analytics Consulting



Project Management & Implementation Services



SAP Cloud Solution Hosting



Application Management Services



Staff Augmentation Services

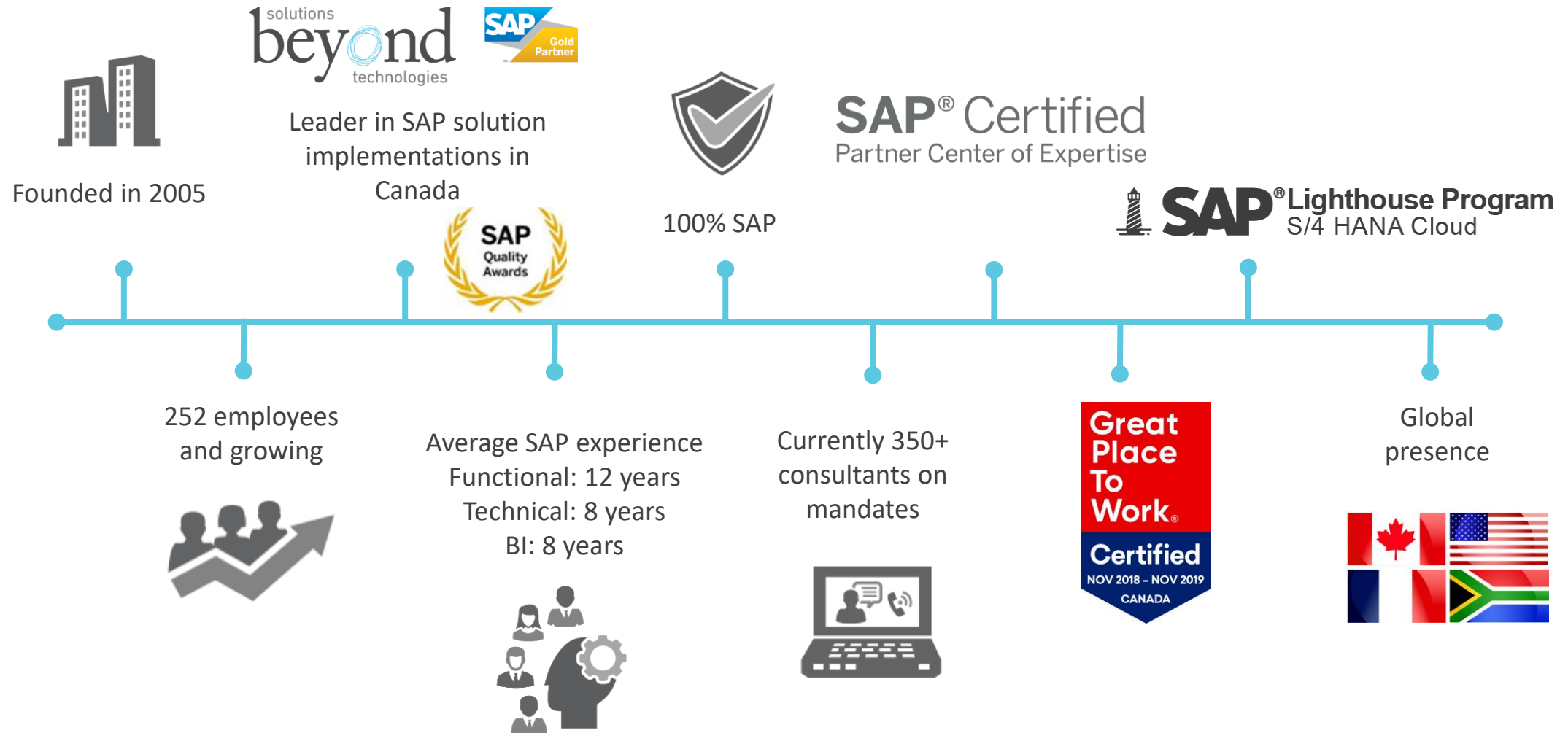


SAP Technology Know-How

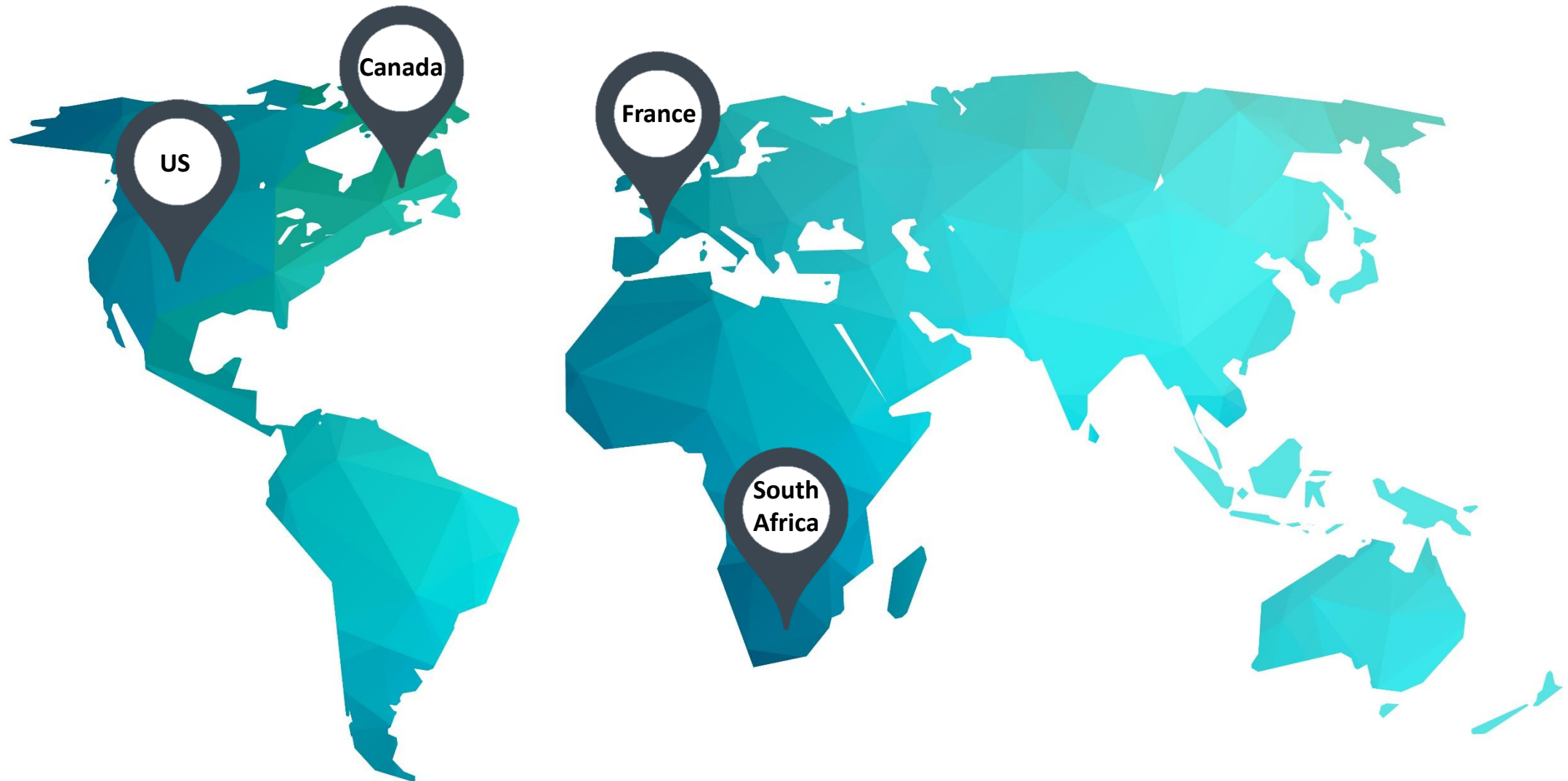


SAP Enterprise Health Check

Beyond Technologies overview



Our global presence

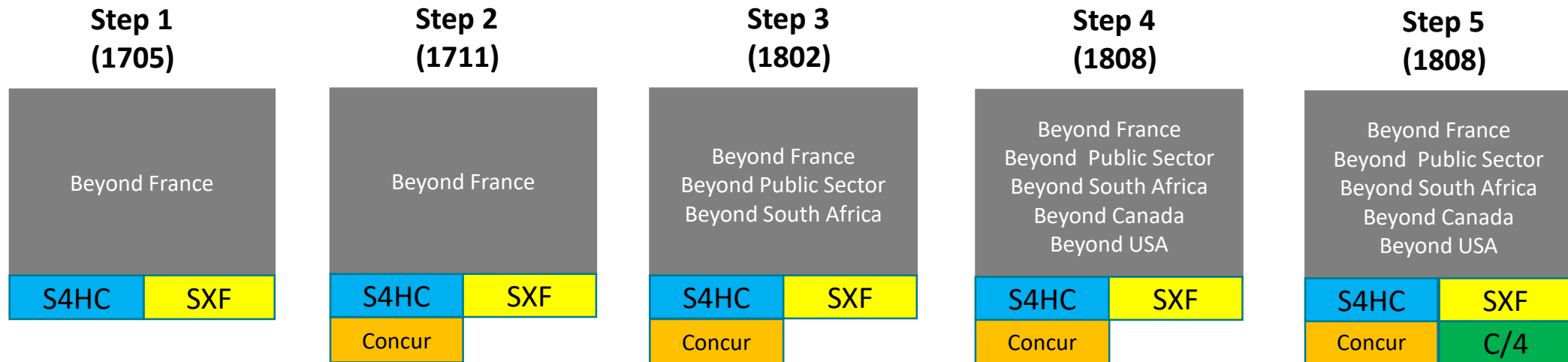


Internal Project Overview

Our Project Strategy



- Start small and manage the risk to the organization.
- Allow time for the product, the team & the customer to mature through a continuous improvement cycle. (1611 to 1808)

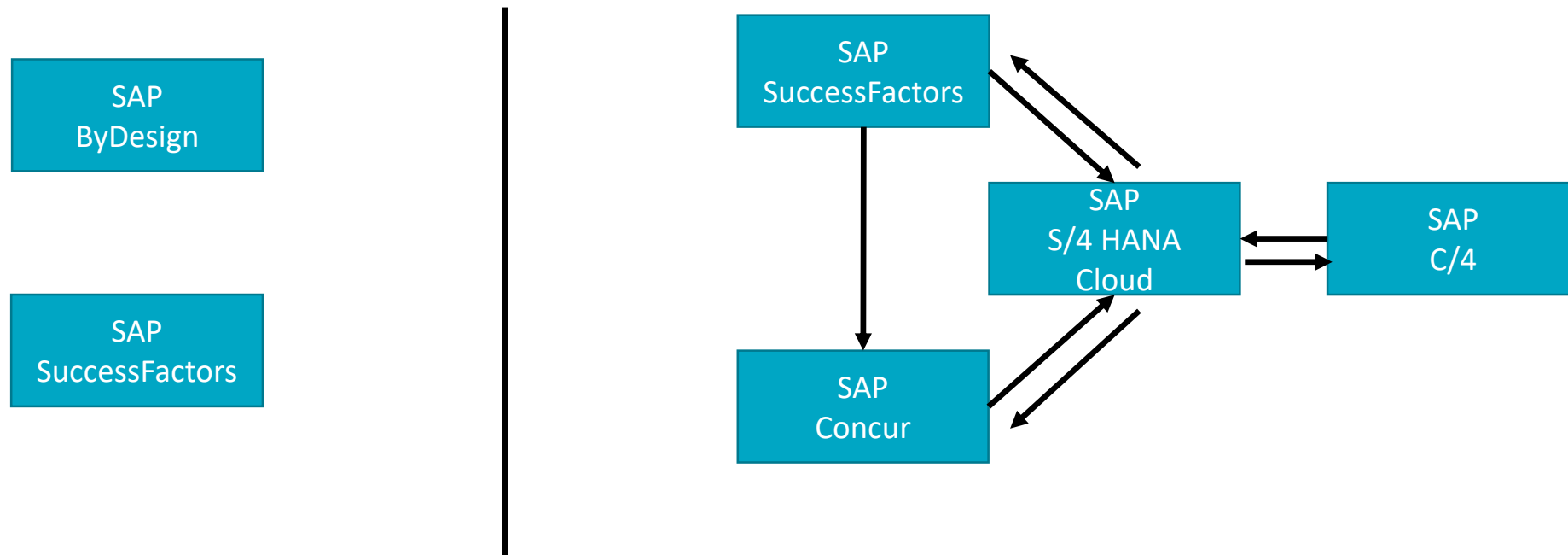


Internal Project Overview

Our Integration Objective



- Transition from ByDesign & SuccessFactors (stand alone) to a fully integrated Intelligent ERP (S/4 HANA Cloud, C/4, SuccessFactors & Concur)



All Tasks (1)

Search

Approval of Working Times

Giroux Ken High

CATS: Approval by Supervisor

Approval of Working Times

First Time Entry for Work Date: Mar 4, 2019 Total Time Entries: **3** Priority: High

Submitted By: Mohamed Hedi Ben Jaafar

Time Entries (3) | [BT - More Details - Internal orders](#) | Approve Reject |

<input type="checkbox"/>	Name	Task Type	Work Date	Project	Activity Type	Recorded Hours	Approved Hours	Note
<input type="checkbox"/>	Pignedoli Eric		03/25/2019	Time Entry Parking	Development 2	3.00	0.00	
<input type="checkbox"/>	Noel Sylvain		03/21/2019	Time Entry Parking	Development 1	1.50	0.00	
<input type="checkbox"/>	Mohamed He...	Internal Customer Service	03/04/2019			6.00	9.50	

Create Customer Projects

+

Plan Customer Projects

1

My Projects

Approve Timesheets

Approve/Reject Time...

2

Pending Entries

Release Billing Requests

0

Release Billing Proposals

Due Today

0

Run Revenue Recognition

My Projects

Edit Billing Request

Customer Projects

Highest Cost Deviation

<u>CP00000134</u>	<u>-74.95</u>
-------------------	---------------

[now](#)

Notify Missing Time

Time Recording Status

<u>April 2019</u>	<u>100%</u>
<u>March 2019</u>	<u>100%</u>

[now](#)

Review Customer Projects

0

Pending Forecast

Monitor Missing Time Notifications



My Inbox
All Items

✓ **1**

My Outbox
Outbox items

✓ **12**

- My Home
- My Inbox
- Customer Projects
- Employee Self Service
- HR Master Data
- Internal Projects
- Project Analysis
- Master Data for Commercial Projects
- Employee Self Services
- Reporting for General Ledger
- Collaboration
- Prices for Professional Services
- HCM Manager
- Project Timesheet
- Project Billing
- Analytics

Internal Projects (4)

Search [icon] [refresh]

Time Entry Parking

Cost (Planned): CAD 88.44K
11/01/2018 - 01/31/2... In Execution

IP00000026 - IP Management

Cost (Planned): CAD 678.00K
10/01/2018 - 12/31/2... In Execution

IP00000043 - Android Development

Cost (Planned): CAD 150.00K
01/01/2019 - 12/31/2... In Execution

IP00000013-R&D-Retail Offline iOS App

Cost (Planned): CAD 461.00K
09/01/2018 - 09/01/2... In Execution

Internal Projects

IP00000013-R&D-Retail Offline iOS App (IP00000013)

Duration: 09/01/2018 - 09/01/2020 Effort (Planned): 5,000 Hours In Execution
Project Manager: Leonardo De Araujo Cost (Planned): CAD 461.00K

Information Work Packages Team Attachments Versions

Internal Project

Project ID: IP00000013
Project Name: IP00000013-R&D-Retail Offline iOS App
Project Manager: Leonardo De Araujo
Duration: 09/01/2018 - 09/01/2020
Stage: In Execution
Currency: CAD
Description:

Accounting

Service Organization: Service Organization - Beyond CA
Cost Center: RETAIL_CAN
Profit Center: Project Retail MTL (100126)

More Project Roles

Project Partner: Leonardo De Araujo
Project Controller: Bouchard Anne
Project Accountant: Bouchard Anne

Public Project

YES

Internal Project Overview

Business Benefits



- Accelerated Billing Process – accelerating process by 5% → 25%;
- Accelerated Month-end / Year-end Closure (Projected)
 - Universal Ledger – Allowing holistic financial accounting
 - Revenue Recognition – Allowing the review and confirmation of revenue through-out the month
 - Projects – Centralized in one place (Integrated Sales Order & On-account Payments)
 - Interco Projects – No longer required to create mirror projects and automation of process;
- Better Project Profitability Visibility (Event-based Recognition);
- Positive feedback on Concur user experience – ease and speed compared to ByDesign.

Internal Project Overview

Project Closure



- Our transition from ByDesign to S/4 HANA Cloud is completed !
- The project team is about to be dissolved after the first month-end for Beyond Canada is completed.
- We have already seen benefits and are sure that this will continue as the functionality is enhanced and our understanding increases. We invested in a roadmap and not a system.
- We are mostly standard, very few exceptions.
- We will be able to apply our lessons learned to our current & future client projects.



SAP S/4HANA Release Info



SAP S/4HANA Roadmaps

SAP S/4HANA Trials

S/4HANA Roadmap Viewer



S/4HANA Cloud User Community



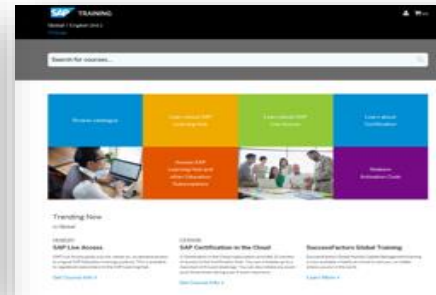
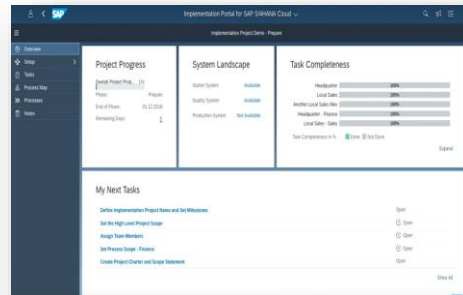
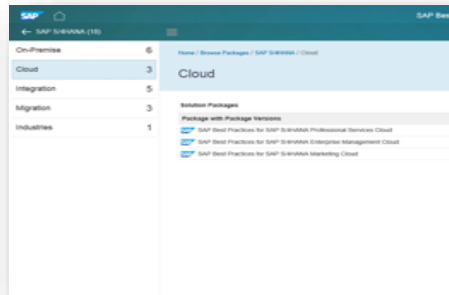
Best Practices Explorer

Implementation Portal for SAP S/4HANA Cloud

SAP Learning Hub

SAP Help Portal

Join the SAP S/4HANA Community



Take the Session Survey.



We want to hear from you!
Be sure to complete the
session evaluation on the
SAPPHIRE NOW and ASUG
Annual Conference mobile
app.



Presentation Materials

Access the slides from 2019 ASUG Annual Conference here:

<http://info.asug.com/2019-ac-slides>



Q&A

For questions after this session, contact us at

Marco Valencia

VP, SAP S/4HANA Cloud Product Management & Co-Innovation

SAP Labs, LLC

E marco.valencia@sap.com

T +1 (404) 943-6477



Let's Be Social.

Stay connected. Share your SAP experiences anytime, anywhere.

Join the ASUG conversation on social media: **@ASUG365 #ASUG83650**

