

ASUG 84185

Overview of SAP Data Hub

Michael Eacrett, SAP Labs
May, 2019

PUBLIC

Disclaimer

The information in this presentation is confidential and proprietary to SAP and may not be disclosed without the permission of SAP. Except for your obligation to protect confidential information, this presentation is not subject to your license agreement or any other service or subscription agreement with SAP. SAP has no obligation to pursue any course of business outlined in this presentation or any related document, or to develop or release any functionality mentioned therein.

This presentation, or any related document and SAP's strategy and possible future developments, products and or platforms directions and functionality are all subject to change and may be changed by SAP at any time for any reason without notice. The information in this presentation is not a commitment, promise or legal obligation to deliver any material, code or functionality. This presentation is provided without a warranty of any kind, either express or implied, including but not limited to, the implied warranties of merchantability, fitness for a particular purpose, or non-infringement. This presentation is for informational purposes and may not be incorporated into a contract. SAP assumes no responsibility for errors or omissions in this presentation, except if such damages were caused by SAP's intentional or gross negligence.

All forward-looking statements are subject to various risks and uncertainties that could cause actual results to differ materially from expectations. Readers are cautioned not to place undue reliance on these forward-looking statements, which speak only as of their dates, and they should not be relied upon in making purchasing decisions.

Agenda

Overview

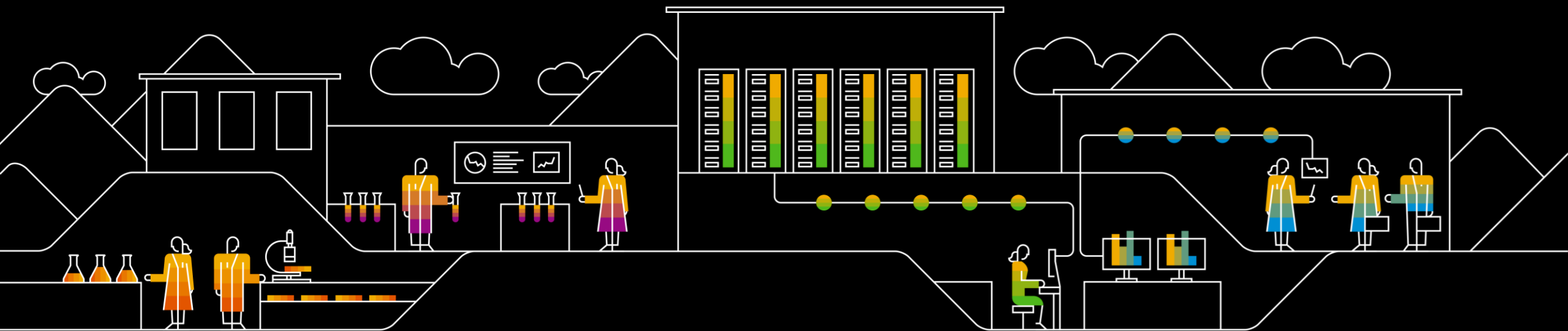
- Motivation
- Strategy & Key Features
- Architecture

Use Cases

Demo

Additional information

Overview



Enterprises are sitting on a **data treasure trove** which they can't unlock



Data Transparency

Difficulties in managing and orchestrating data across distributed data landscapes

74%

of enterprises say their data landscape is so complex that it limits agility

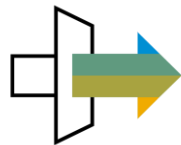


Data Innovation

Complexity in synthesizing data from SAP and non-SAP landscapes for machine learning training, and IoT use cases

86%

of enterprises claim that they are not getting the most out of their data



Data Compliance

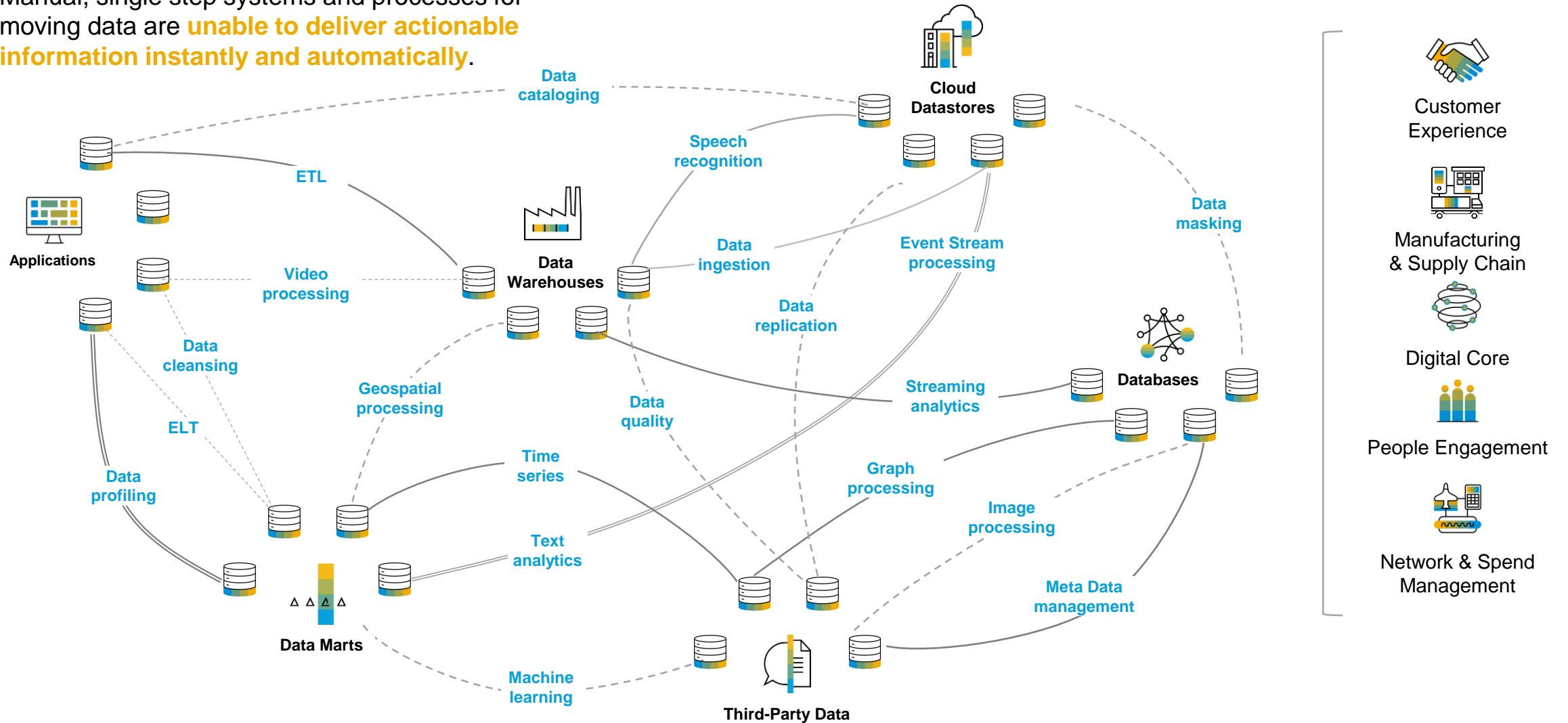
Enforcing a multitude of corporate and regulatory data policies is becoming a burden and risk for enterprise IT

4%

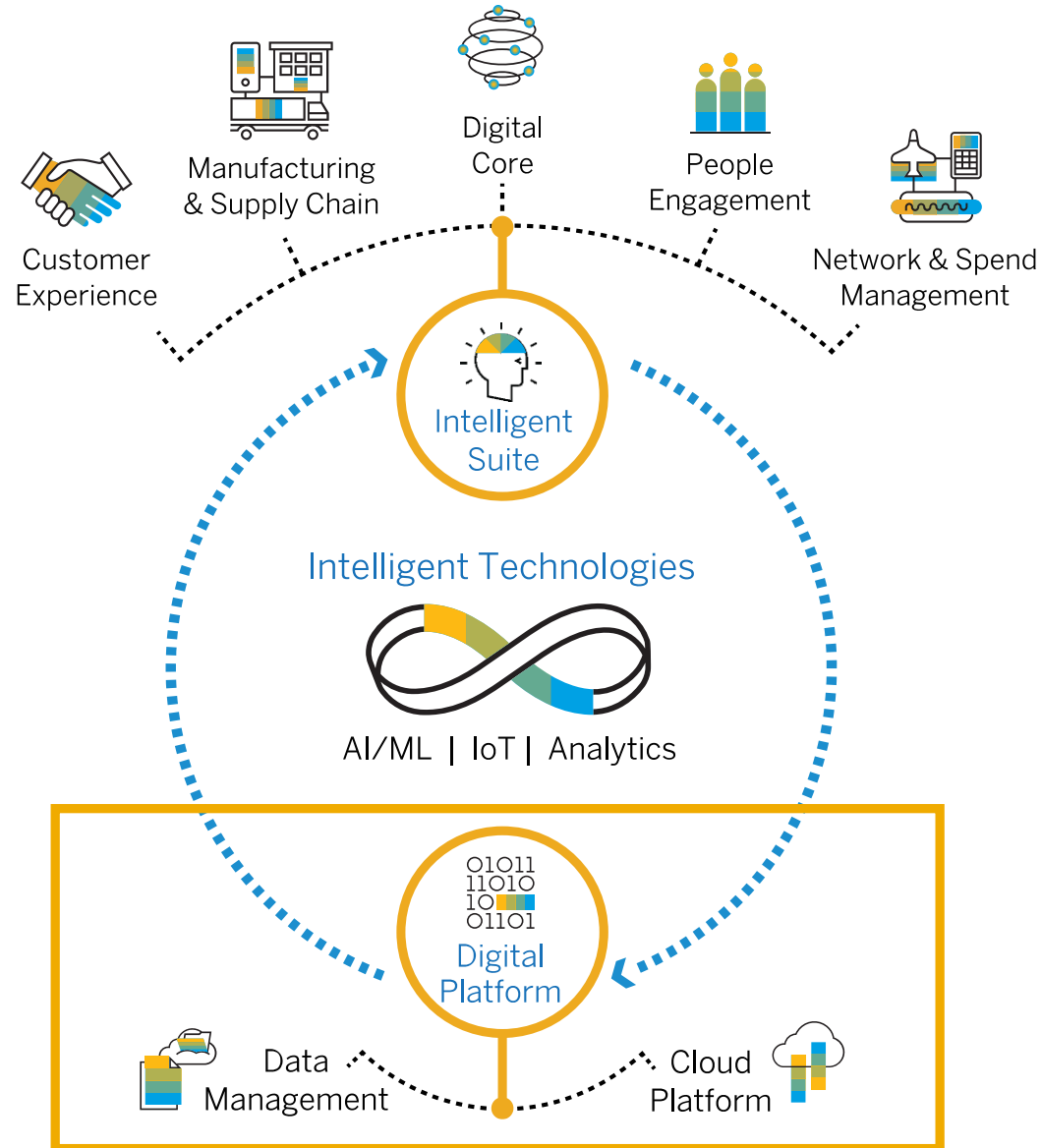
of annual turnover can be fined by the EU for violating GDPR regulations

Data deluge: Distributed landscapes, diverse data, manual siloed operations

Manual, single step systems and processes for moving data are **unable to deliver actionable information instantly and automatically.**



SAP Strategy – Deliver the Intelligent Enterprise



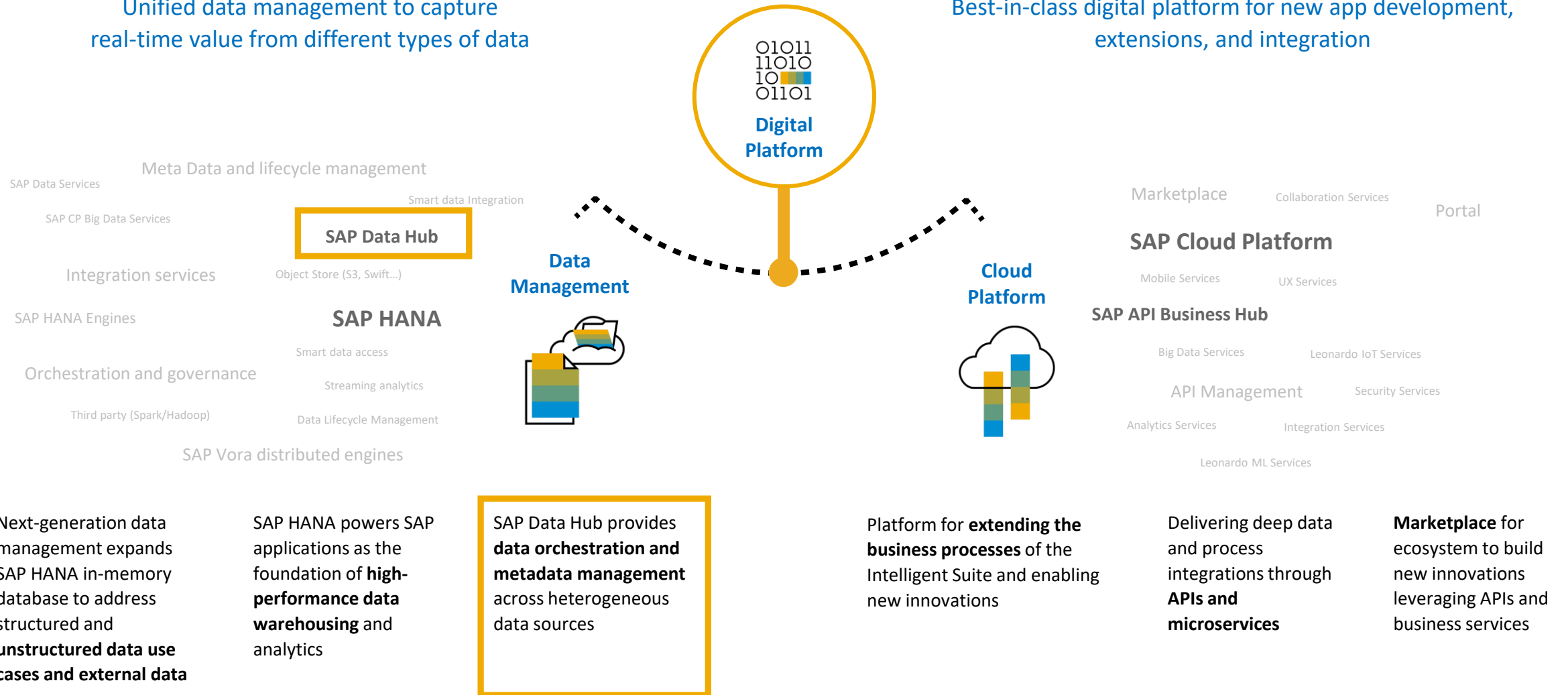
THE INTELLIGENT ENTERPRISE
features **3 KEY COMPONENTS**:

- 1 Intelligent Suite
- 2 Digital Platform
- 3 Intelligent Technologies

Digital Platform: Unlock data-driven intelligence and innovation

Unified data management to capture real-time value from different types of data

Best-in-class digital platform for new app development, extensions, and integration



SAP Data Hub – Unified Data Integration for the Intelligent Enterprise

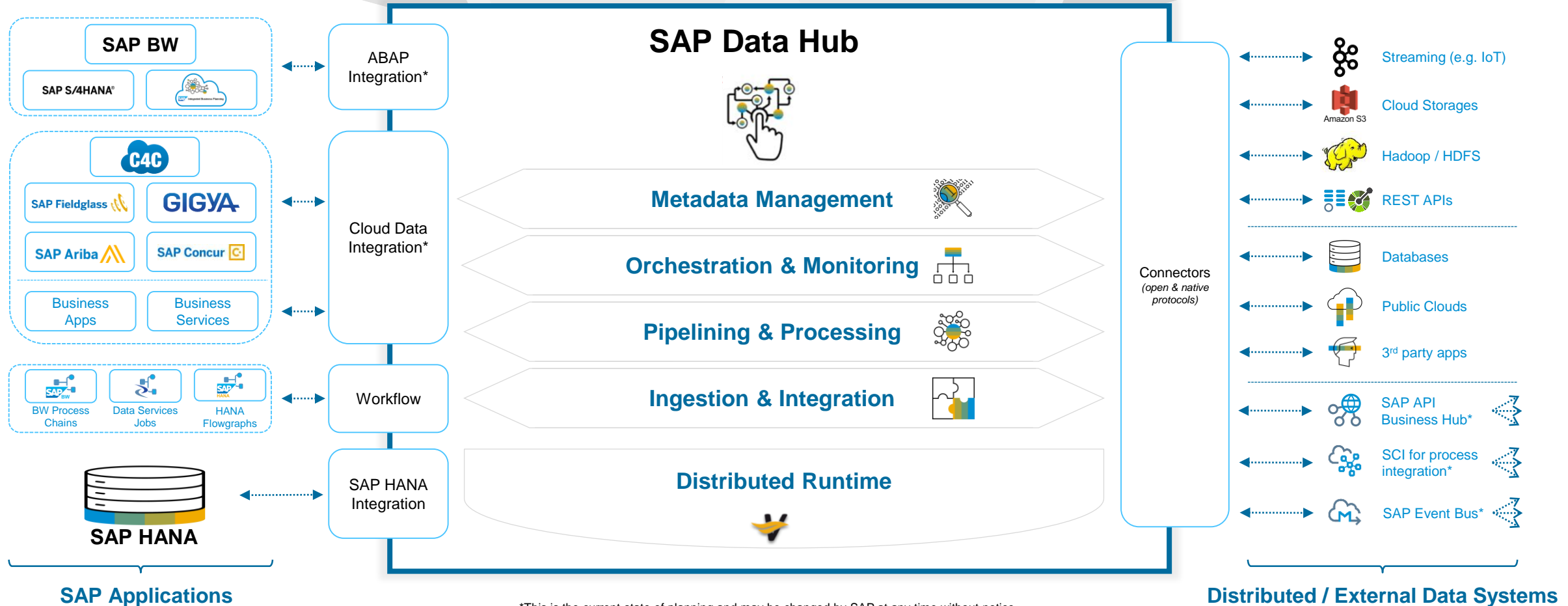
Data-driven Applications

IoT

Machine Learning

Analytics / BW

...



*This is the current state of planning and may be changed by SAP at any time without notice.

SAP Data Hub

Product highlights

SAP Data Hub is a multifaceted solution that provides data integration, data orchestration, data refinement and data governance across the diverse and distributed data landscape.

Data Integration

- Landscape management
- Enterprise application integration
- Multiple methods of data ingestion (streaming, batch, replication, etc.)

Data Orchestration

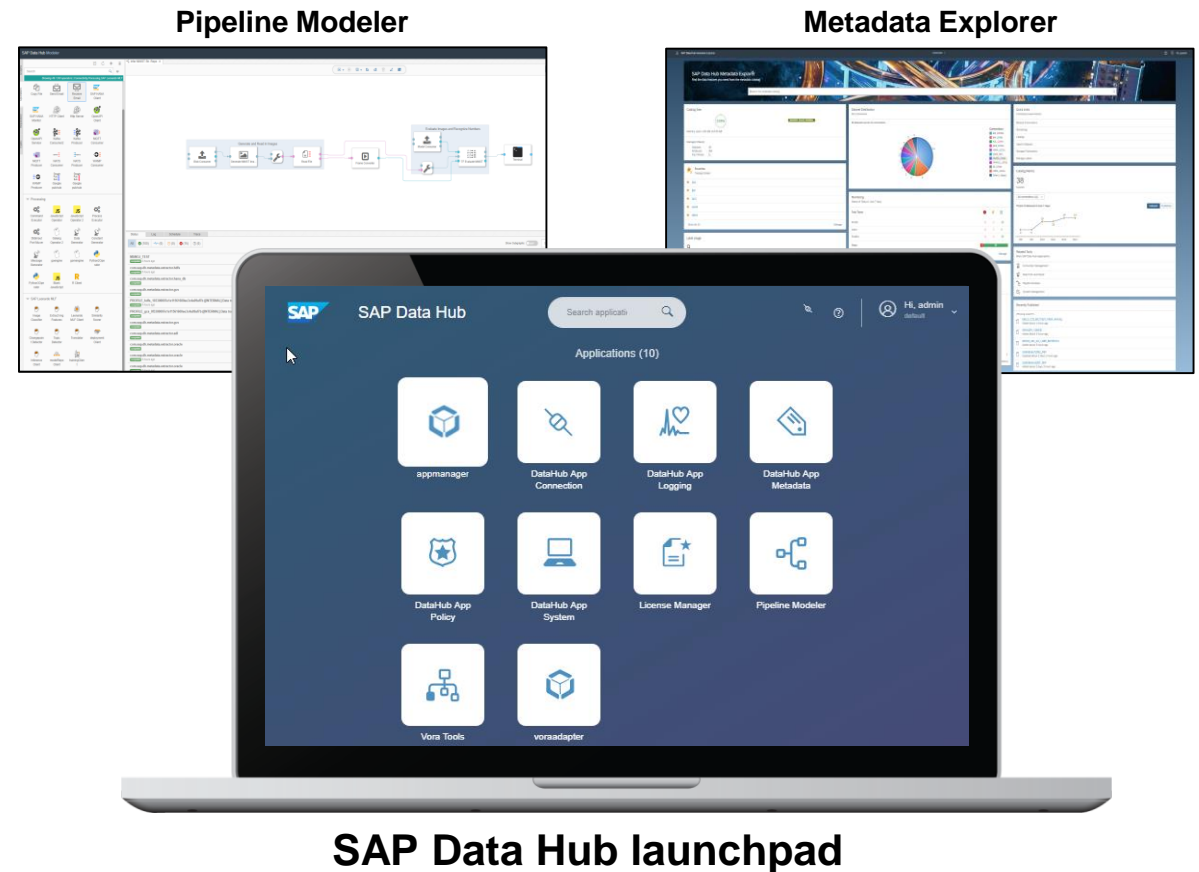
- Workflow scheduling and monitoring
- Remote task execution
- Data transfer between systems

Data Refinement

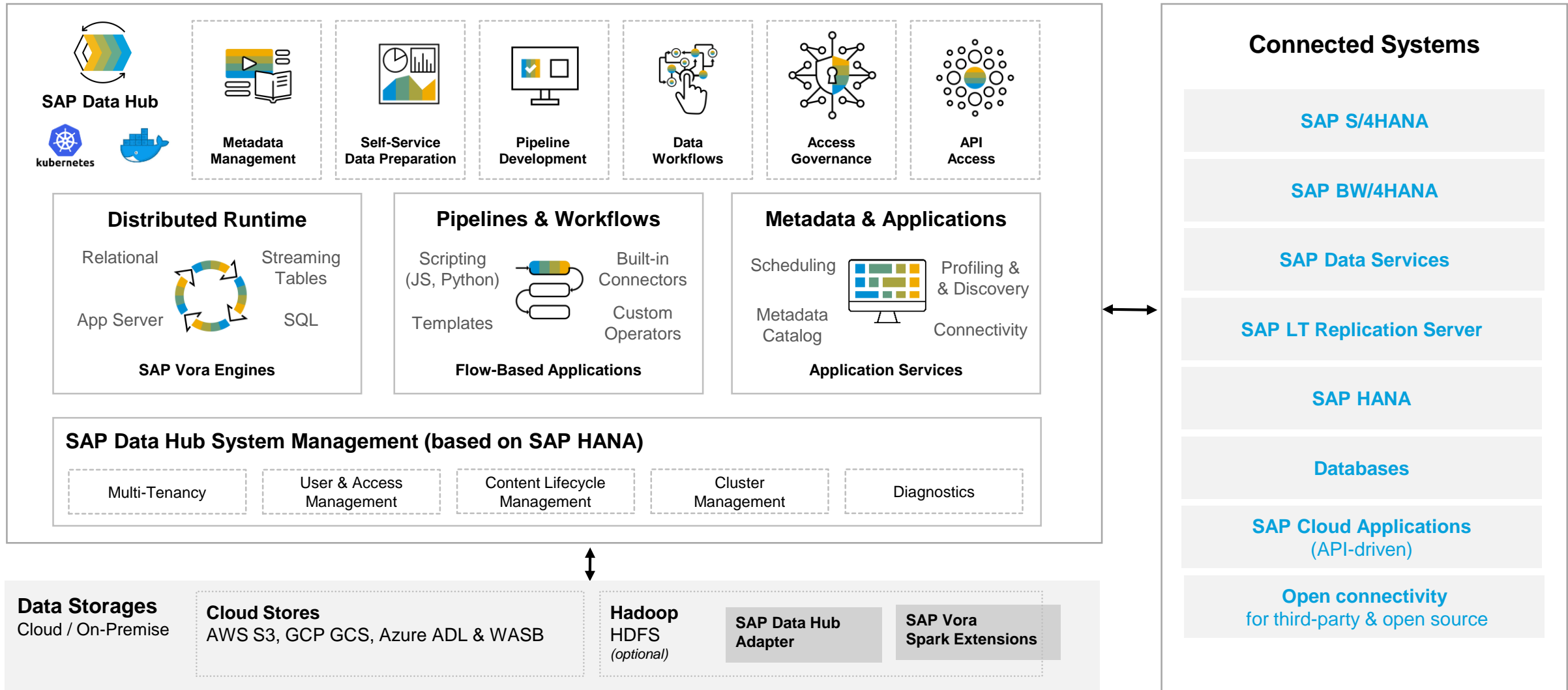
- Data pipeline modeling
- Complex data processing (e.g. multimedia, machine learning, etc.)
- Distributed query processing for big data

Data Governance

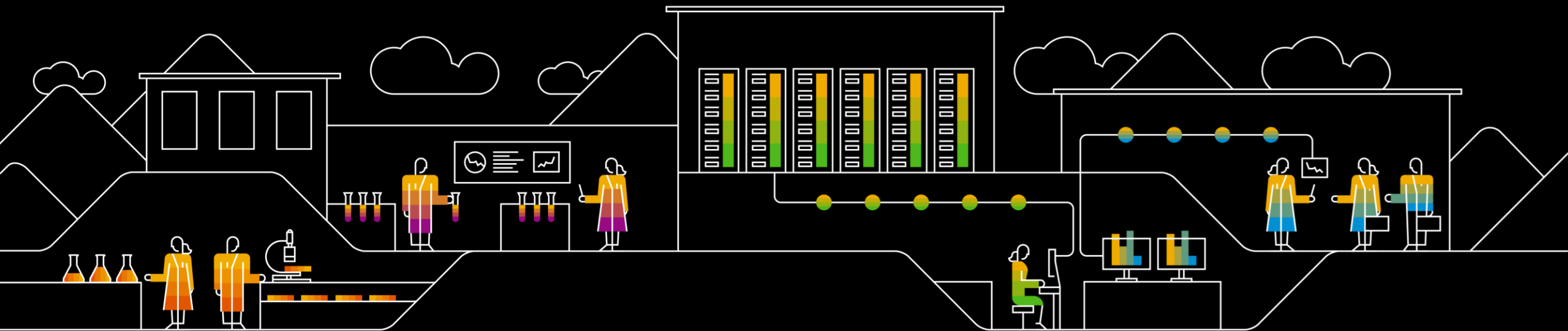
- Metadata management and cataloging
- Visual data lineage and Impact analysis
- Profiling, discovery, access and security



Architecture overview of SAP Data Hub

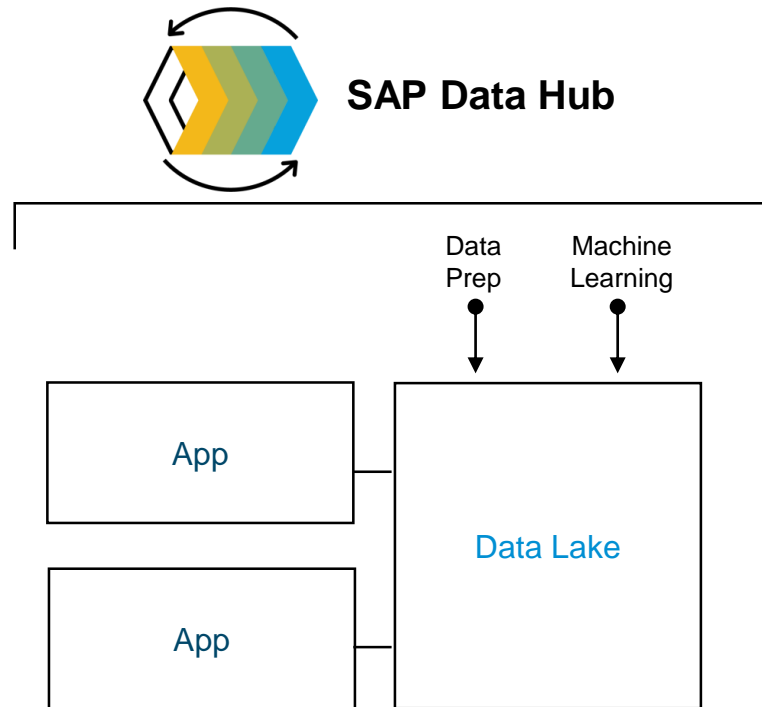


Use Cases



Data science & machine learning data management

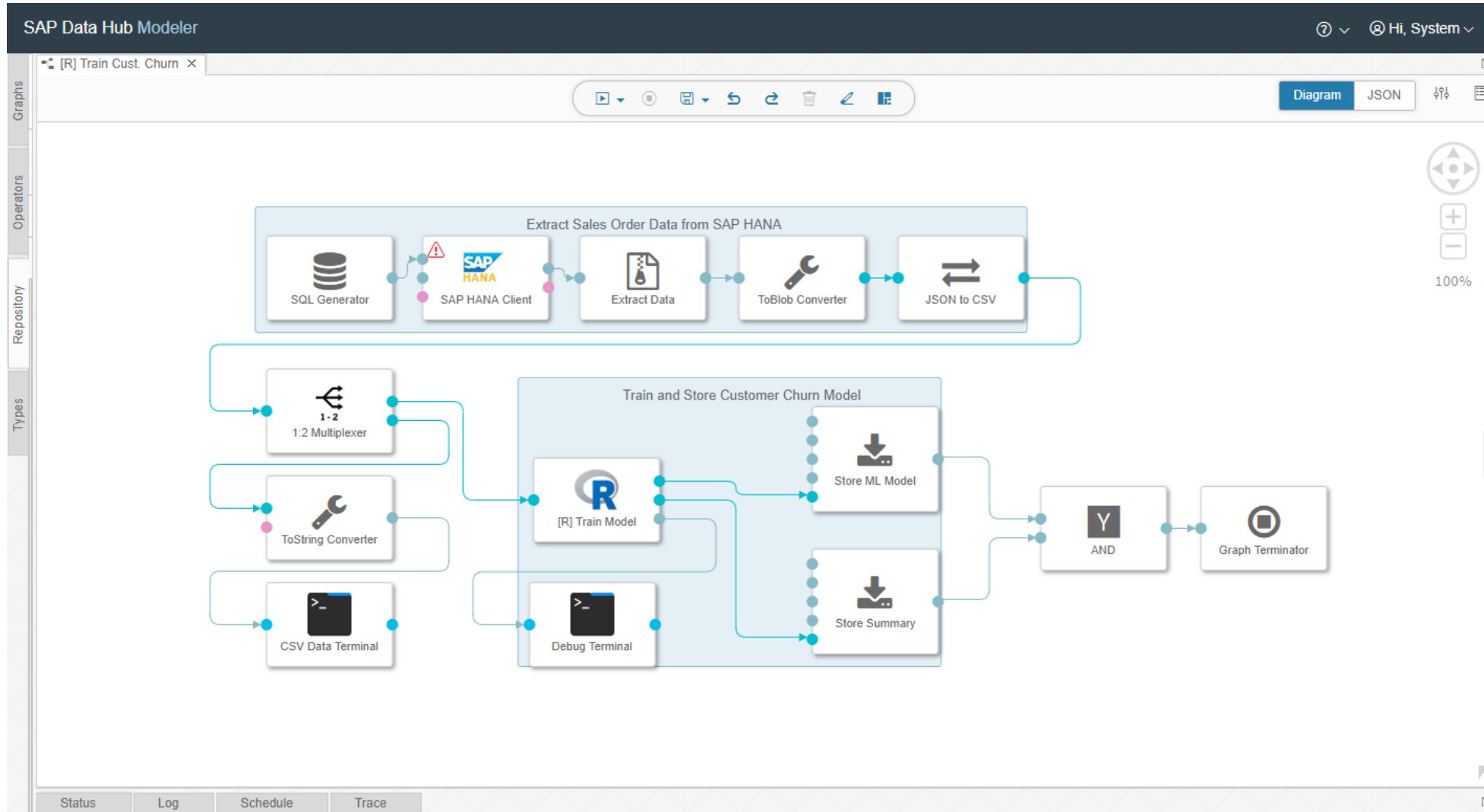
Prepare data from all source to increase effectiveness of AI/Machine learning algorithms



- Integrate variety of data sources with open data landscape management
- Process ML models leveraging many SAP and non-SAP engines within the same tool
- Quickly and safely operationalize ML outcomes back into enterprise processes
- Dramatically decrease the time needed to collect, refine, and orchestrate data

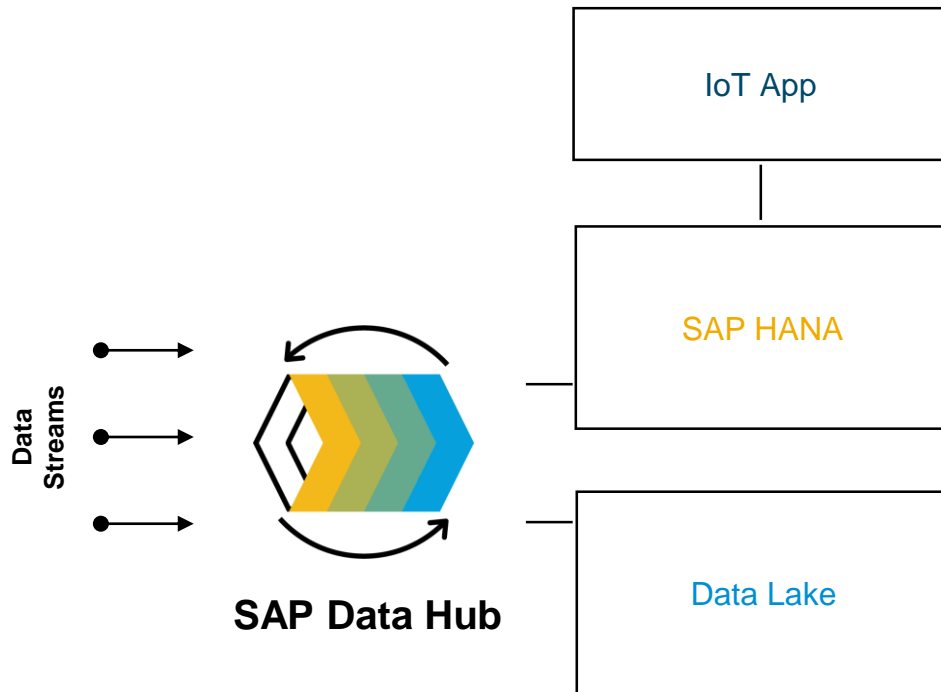
Data science & machine learning data management

Example – Machine Learning Model Training Pipeline



IoT data ingestion and orchestration

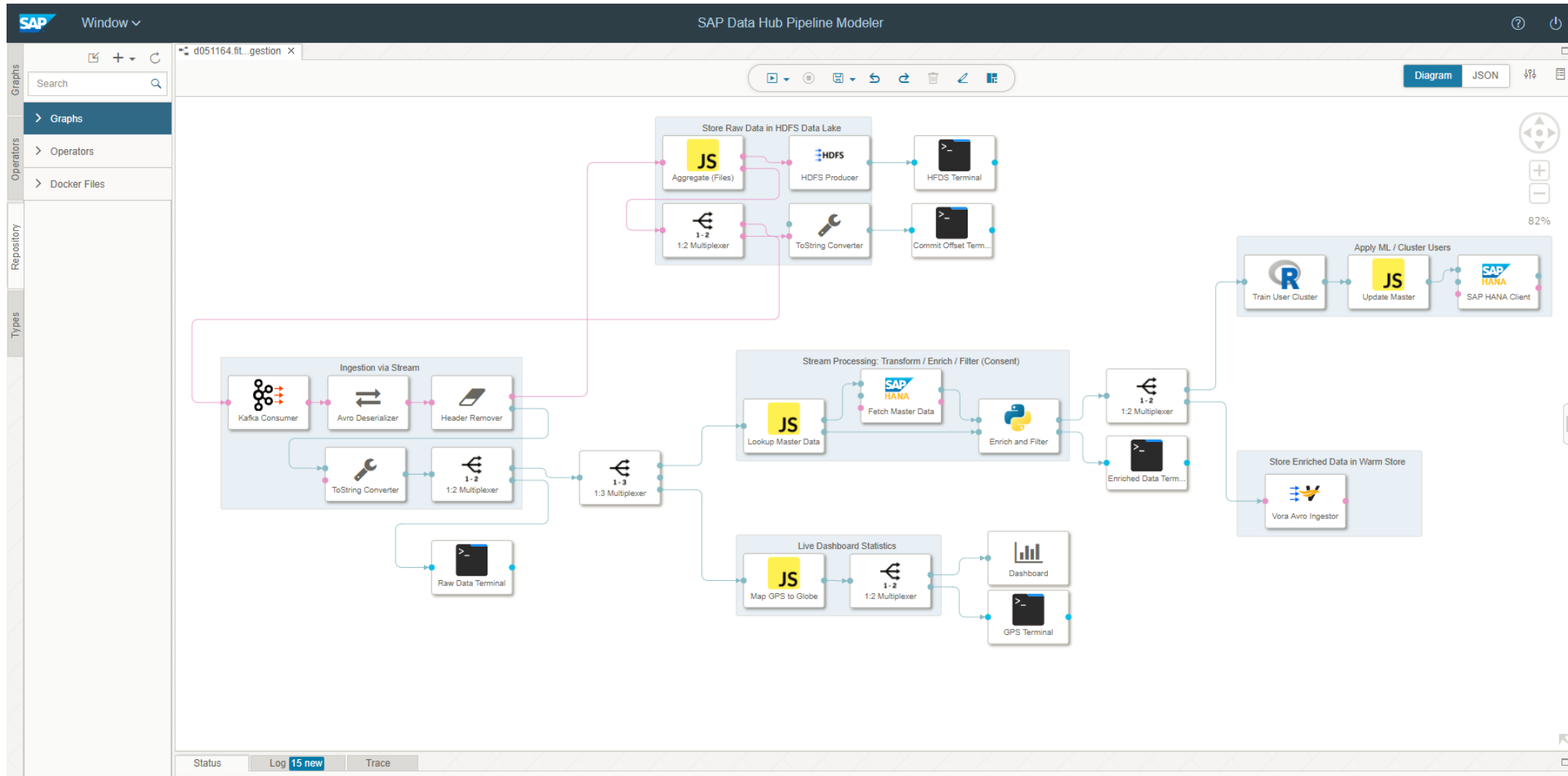
Integrate and process disparate data from messaging systems and high-volume cloud storages



- Tackle the challenge of integrating and analyzing vast quantities of raw data and events from disparate semi-structured sources with low-level semantics and no business context
- Solve the point-to-point challenge of distributed heterogeneous environments spanning messaging systems, cloud storages, SAP data management solutions, and enterprise apps
- Event-driven pipelines scaling to executions of many pipelines in parallel, at any time

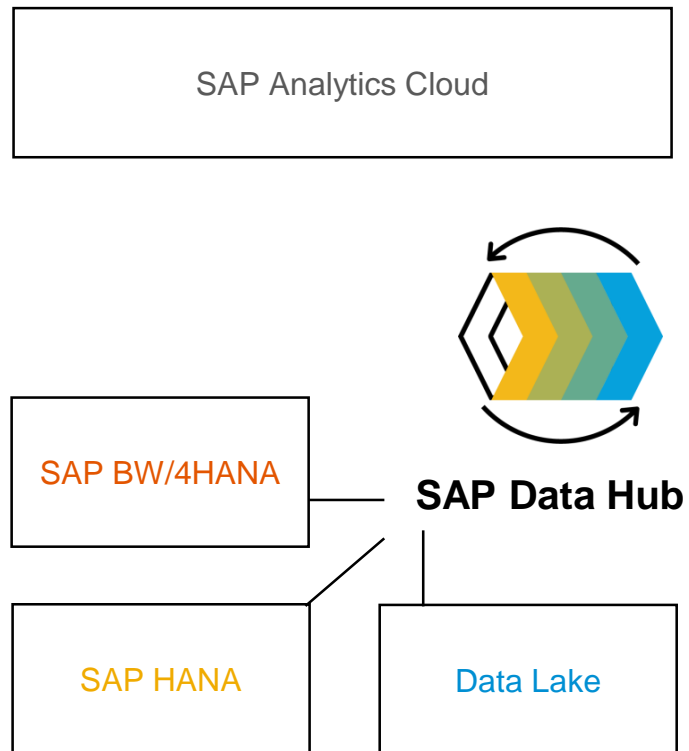
IoT data ingestion and orchestration

Example – IoT Ingestion Pipeline



Intelligent data warehouse

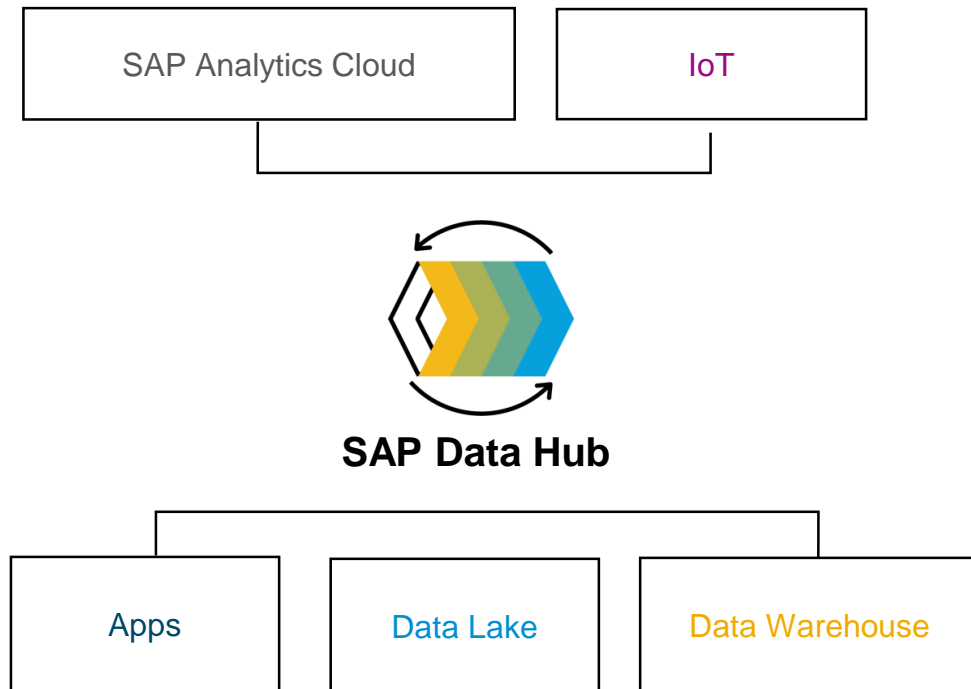
Rapidly integrate and leverage new data sources



- Acquire new data sources with previously siloed data from traditional data warehouses, data marts, enterprise applications, and Big Data stores
- Combine all types of sources including structured and unstructured data, and enable a large variety of processing on them
- Seamlessly process large data sets across highly distributed landscapes and close to the data source, moving only high-value data

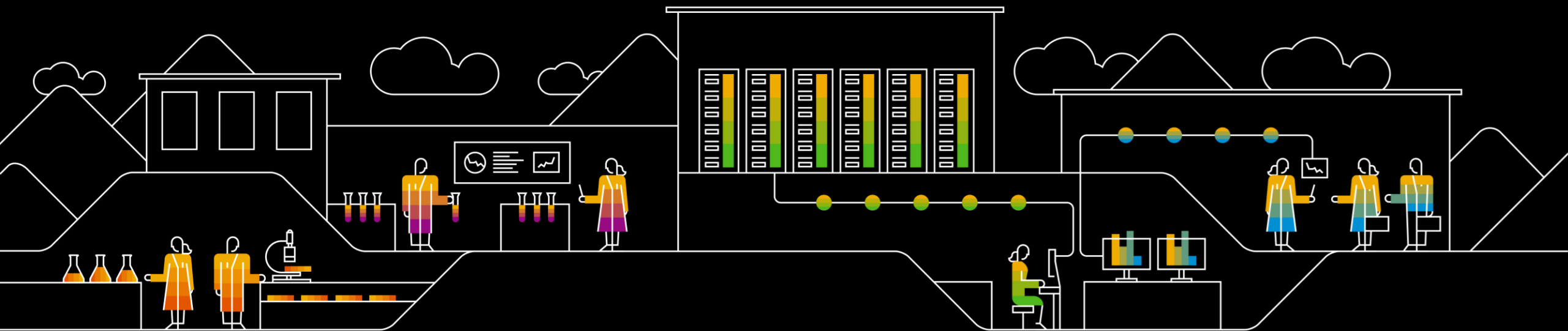
Governance and data cataloging

Understand and secure your data



- Crawl through data stores to gather valuable metadata and store it in a centralized information catalog
- Profile source data to gain a deeper understanding of the data to create meaningful data pipelines
- Move to centralized data access and control for all orchestration, data refinement, scheduling, and monitoring

Demo



Further information



Public SAP Web sites

SAP Products: <https://www.sap.com/products/data-hub.html>

SAP Community: <https://www.sap.com/developer/topics/data-hub.html>

SAP training and certification opportunities

openSAP – Freedom of Data with SAP Data Hub: <https://open.sap.com/courses/hub1>

SAP Data Hub video on SAP HANA Academy: <https://www.youtube.com/saphanaacademy>

SAP Data Hub Channel – <https://www.youtube.com/channel/UCLMsNLj0GF0nEw3iixeSEMw/featured>

ASUG+Sapphire:

Sapphire show floor: SAP Data Hub booth and “pop up” demo booth

ASUG SAP Data Hub Sessions:

ASUG84186 Deep Dive Into SAP Data Hub: The What, When, Why, and How

ASUG83241 Roadmap: SAP Data Hub

ASUG84047 SAP Data Hub: Turning Disparate Data into Valuable Assets for Digital Innovation

ASUG82702 SAP Data Hub: The Journey to a Productive Use Case at BASF

ASUG84223 KAESER KOMPRESSOREN: "Smart Air" Strategy Execution

ASUG83238 SAP's Strategy for Big Data and Enterprise Information Management

ASUG83511 Accelerate Digital Transformation at General Mills

Take the Session Survey.

We want to hear from you! Be sure to complete the session evaluation on the SAPPHIRE NOW and ASUG Annual Conference mobile app.



Presentation Materials

Access the slides from 2019 ASUG Annual Conference here:

<http://info.asug.com/2019-ac-slides>

Q&A

For questions after this session, contact us at DataHub@sap.com.

Let's Be Social.

Stay connected. Share your SAP experiences anytime, anywhere.

Join the ASUG conversation on social media: **@ASUG365**

#ASUG



Your Turn!

Contact information:

Michael Eacrett
SAP Data Hub Product Management
Michael.Eacrett@sap.com