



Architecture & Enablement of User Experience : SSO & Security
Anand S Shetty, Sr Managing Consultant, IBM
Kashyap Moturi, Sr Manager, Tapestry Inc.

Session ID # ASUG 83424

About the Speakers

Anand Shetty

- Sr Managing Consultant, IBM
- 15 Years in the SAP Space – Infrastructure, HANA, Basis, Cloud and S/4 HANA – Technical
- Expertise in Migrations, S/4 HANA Deployments, and designing hybrid cloud strategies

Kashyap Moturi

- Sr Manager, Tapestry Inc.
- Global SAP Manager leading the SAP Infrastructure and Basis/Security across all the 3 Tapestry Inc. brands
- 15 years of SAP Basis/Security experience
- Manage vendor/partner relationships

tapestry

COACH | kate spade | STUART WEITZMAN


COACH
NEW YORK

 **950+**
Stores


kate spade
NEW YORK

 **271**
Stores

STUART WEITZMAN

 **82**
Stores



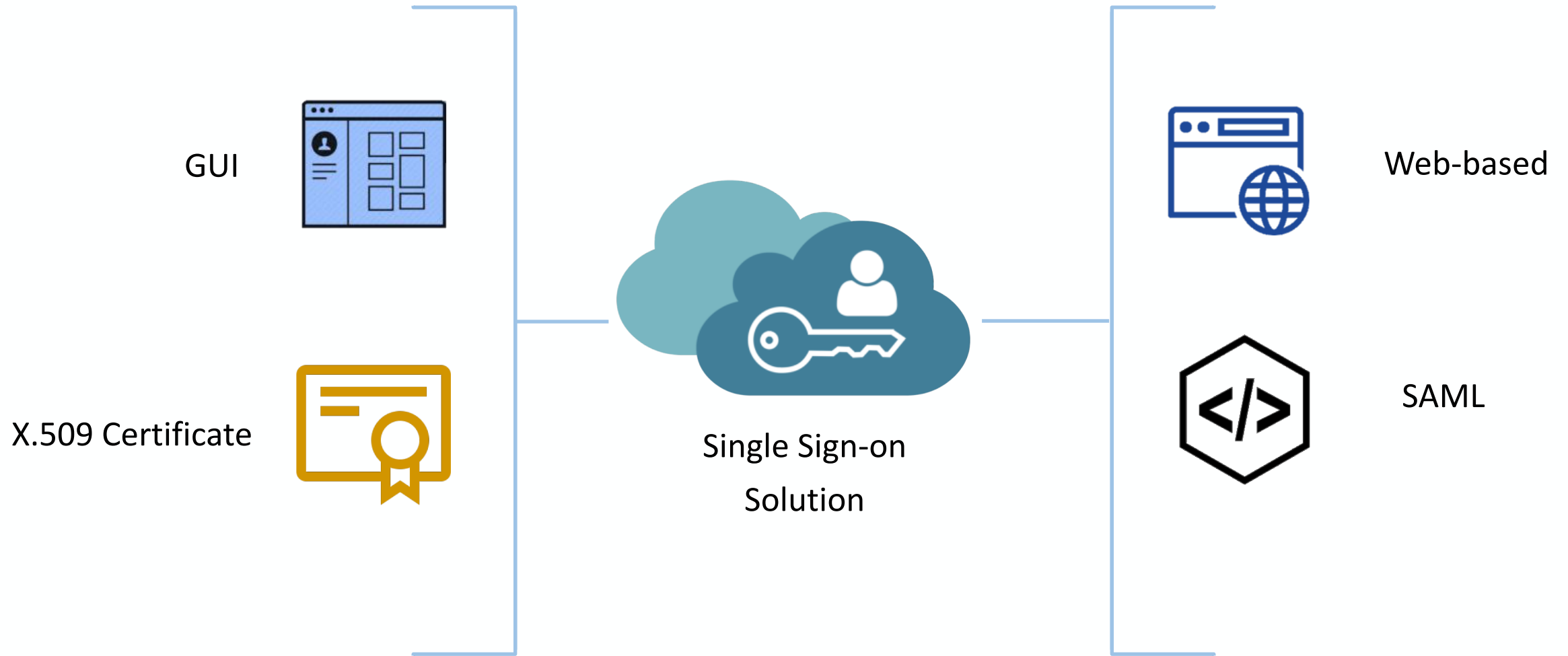
Key Outcomes/Objectives

1. Seamless user experience integrated with security and adaptability
2. Strategy for SAP front-end implementation
3. Single sign-on architecture for S/4 HANA
4. Fiori Apps for Retail

Agenda

- Deployment Strategy – SSO
- GUI Client Approach
- Web-based Client Approach
- Fiori Apps for Retail
- Conclusions
- Demo
- Q & A

Deployment Strategy – SSO



GUI Client *Requirements*



Business Client

Single entry point for
SAP GUI, FIORI, and
NWBC



X.509 Certificate

Eliminates need for
manual entry of
credentials

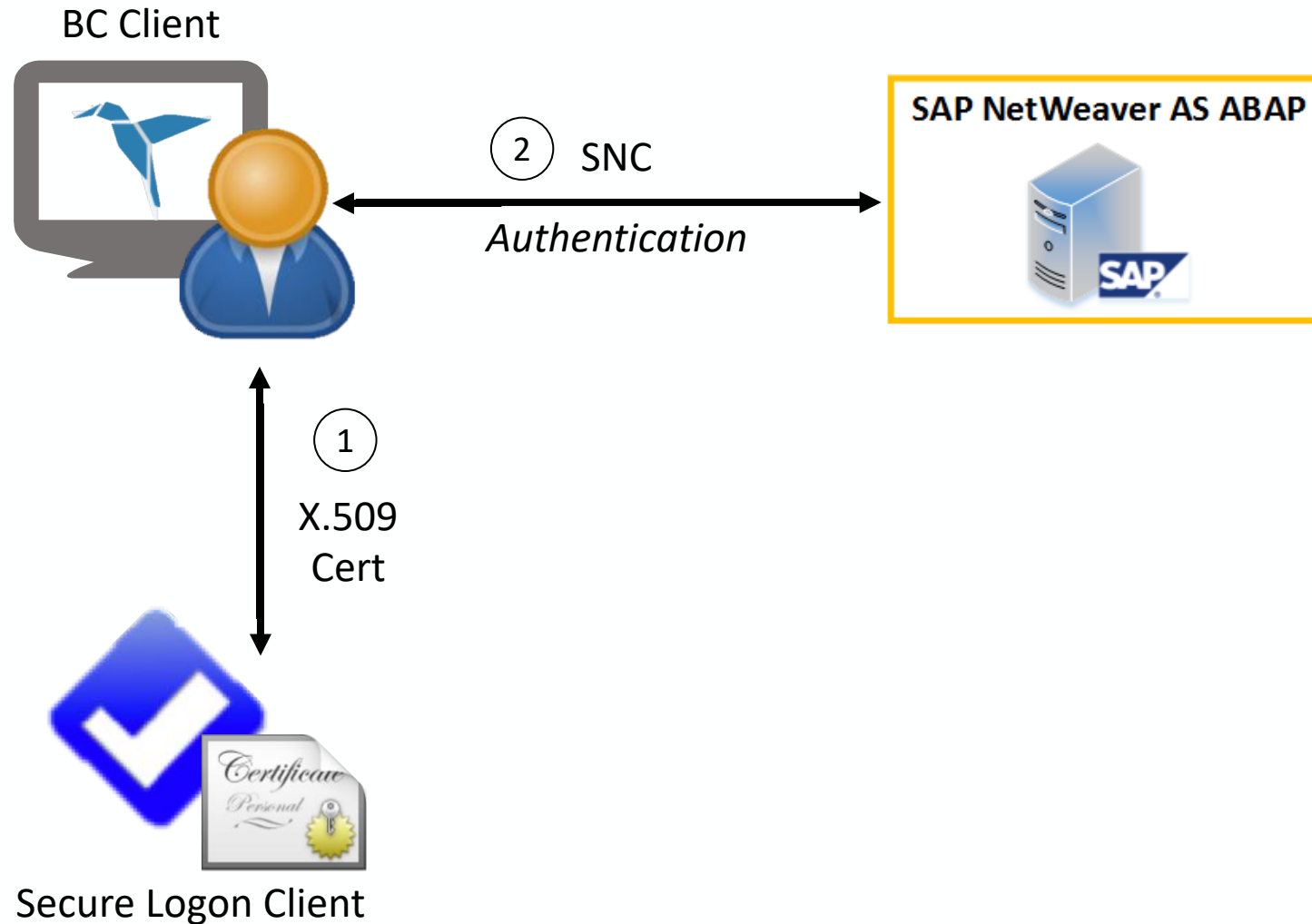


Secure Login Client

Brokers SSO between
SAP GUI and X.509
certificate

GUI Client

Approach – SSO X.509 Certificate



Web-based Client *Requirements*



Service Provider

Capitalizes on native capabilities of SAP NetWeaver AS ABAP

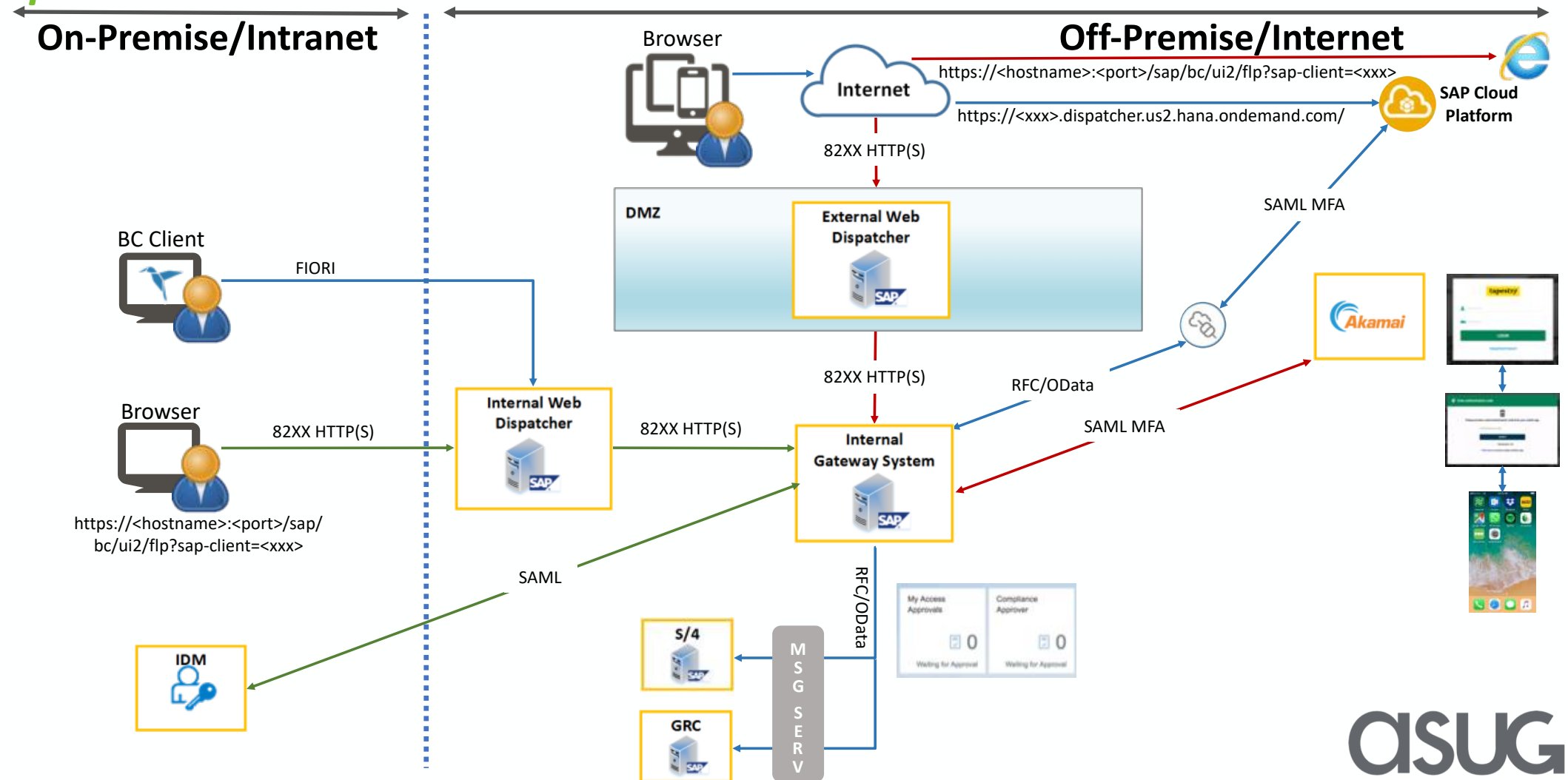


Identity Provider

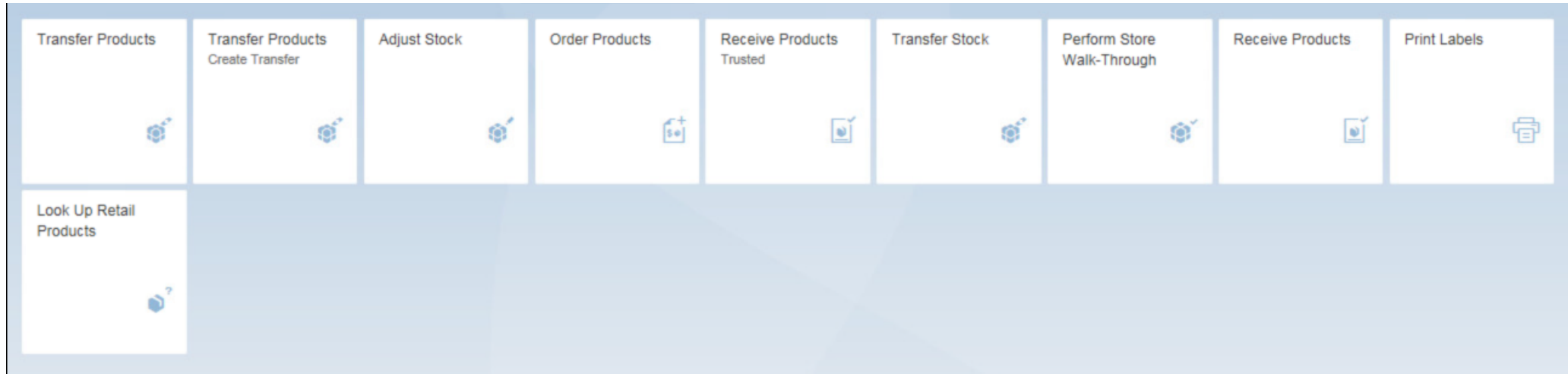
Standardizes method of authentication



Web-based Client Approach - SAML



Fiori Apps for Retail



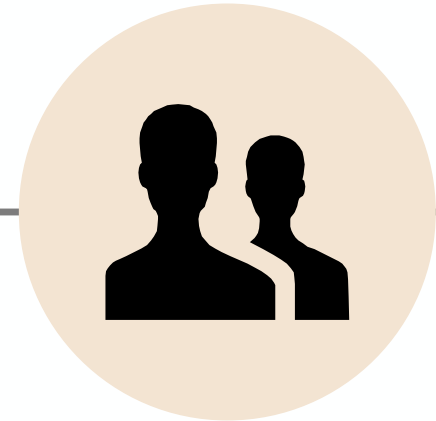
1. Less integration requirements between HHT (Hand Held terminals) and SAP backend
2. Usage from Desktop/Mobile Devices
3. Real Time updates of backend data
4. Better in-store customer experience for Store Associates by having the product information on their fingertips

Conclusion

Strengthens **security** with a single point of authentication



Allows for unified **user experience** across all SAP landscapes



Reduced **cost and time** by leveraging existing infrastructure



DEMO

<https://youtu.be/qK--mePYNJc>

Q&A

For questions after this session, contact us at kmoturi@tapestry.com and asshetty@us.ibm.com

Take the Session Survey.

We want to hear from you! Be sure to complete the session evaluation on the SAPPHIRE NOW and ASUG Annual Conference mobile app.



Presentation Materials

Access the slides from 2019 ASUG Annual Conference here:

<http://info.asug.com/2019-ac-slides>

Let's Be Social.

Stay connected. Share your SAP experiences anytime, anywhere.

Join the ASUG conversation on social media: **@ASUG365 #ASUG**

