



Digital Access and License Compliance

An Update on License Models, Services, Tools, and more

Matthias Medert, SVP Global License Audit & Compliance, SAP SE

May 07, 2019

PUBLIC



Indirect Access
Is it relevant for my Company?

What is „indirect access“ / „digital access“ all about?

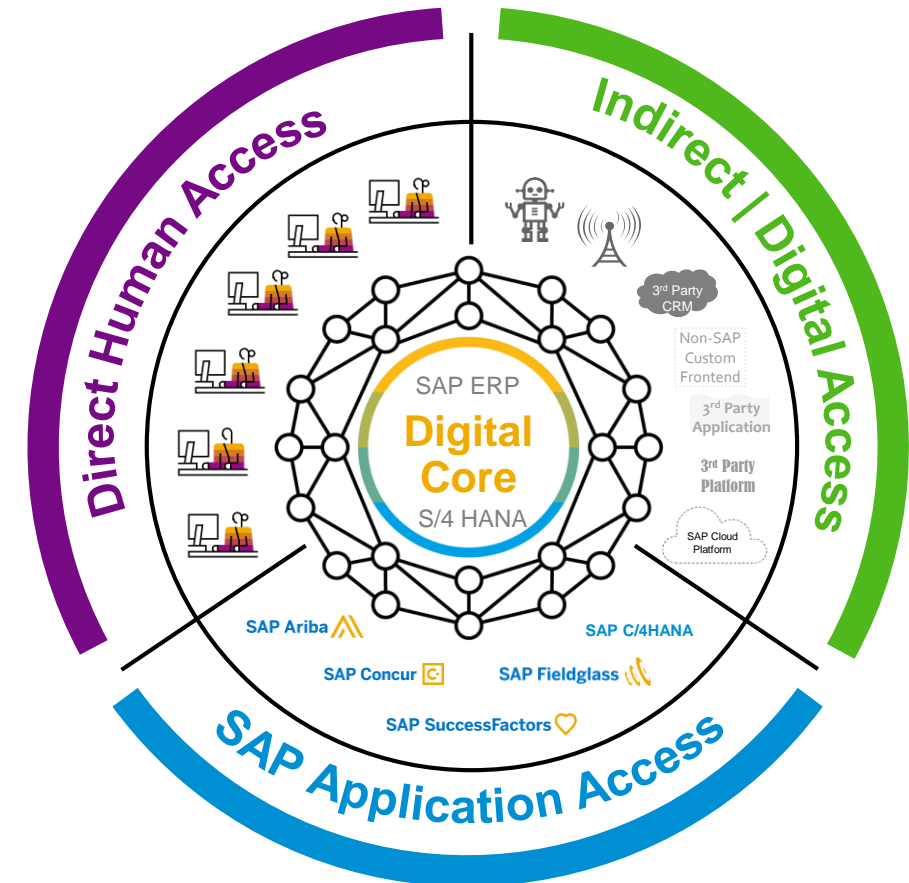
Additional information:

- For detailed material and FAQ see help.sap.com
- Decision tree on indirect access ([Link](#))
- Contact SAP for a free License Advisory Service on Indirect Use via License.Compliance@sap.com

Help portal page not published yet

Typically the “use” of SAP products requires a license

Different types of access can result in use



Looks like I have Indirect Access

How can I license it?

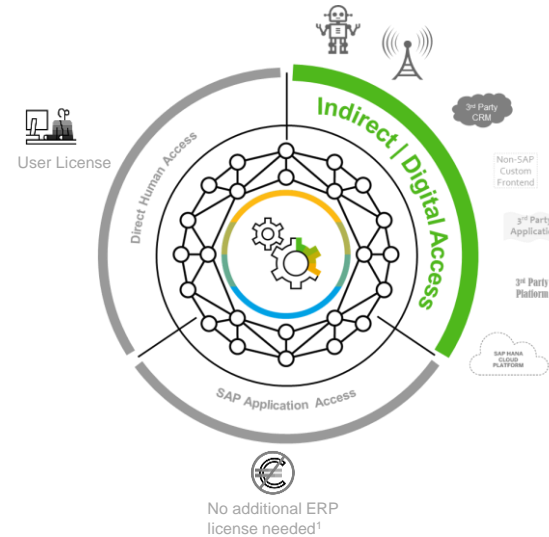


Alternatives for Licensing Indirect | Digital Access

Additional information:

- For detailed material and FAQ see help.sap.com
- Decision tree on indirect access ([Link](#))
- Contact SAP for a free License Advisory Service on Indirect Use via License.Compliance@sap.com

Help portal page not published yet



Existing License Model:

- Based on the existing license model all use of SAP is relevant for licensing: Create, Read, Update, Delete
- Many IoT devices connected to SAP might require a Named User license

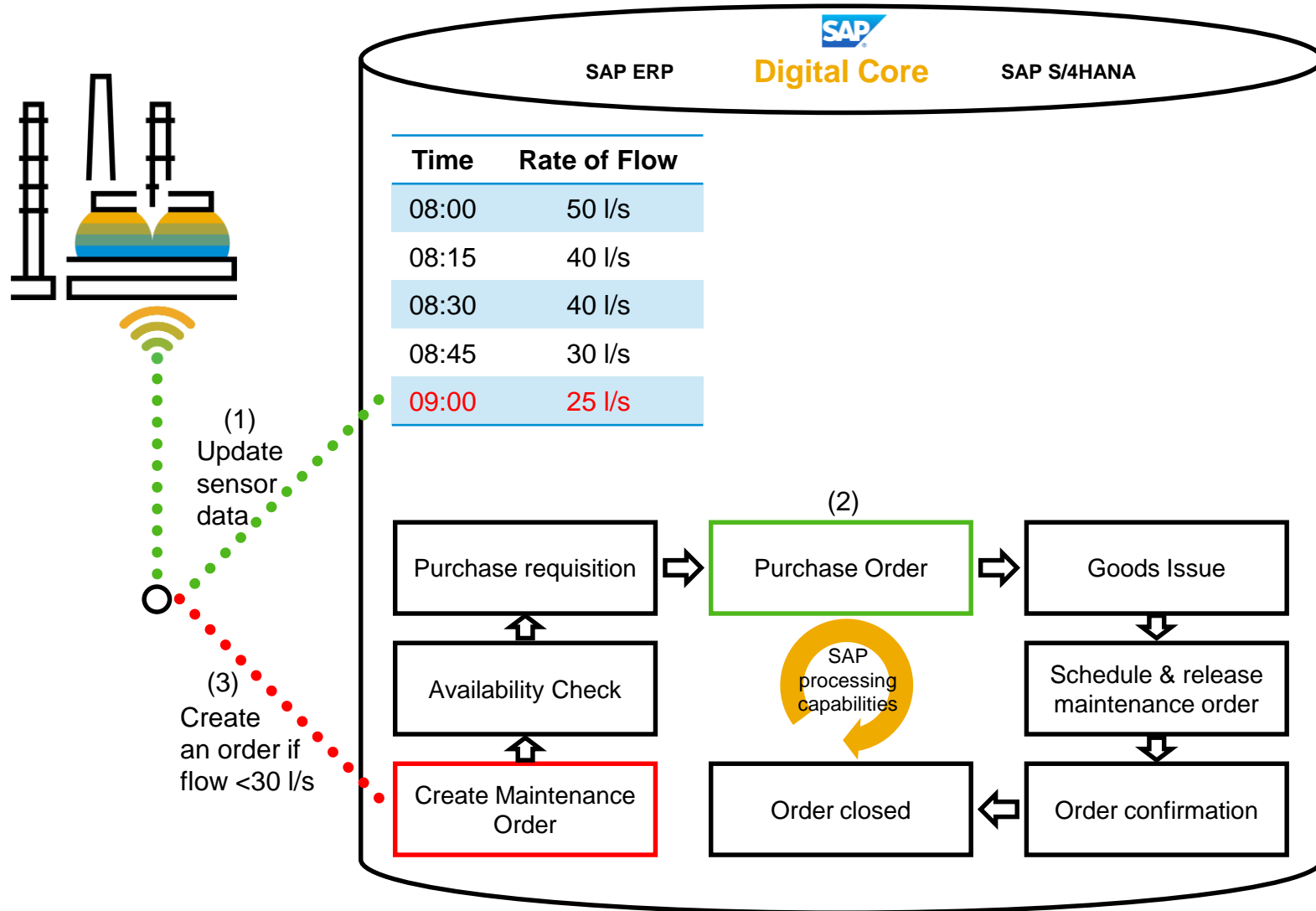
Digital Access License Model

- “Create documents” is the only chargeable use type
 - Limited to “Create” operations
 - Limited to a defined set of “Document Types*” that get created
- No named user required for IoT devices as their use is covered by the licensed “Documents”

* 9 Document Types:

Sales Document, Invoice Document, Purchase Document, Service & Maintenance Document, Manufacturing Document, Quality Management Document, Time Management Document, Financial Document, Material Document

Digital Access with an IoT Scenario Example



Counted as Digital Access Documents

- CREATED “document” (3)
(e.g. created maintenance order)

NOT counted as Digital Access Documents

- (1) Sensor updates data
- (2) “Documents” created subsequently within SAP

Digital Access sounds interesting

How do I find out how many “documents” I create?



Alternatives to Identify the Required Number of Documents

Additional information:

- Estimation Notes: [#2644139 for ECC](#) and [#2644172 for S/4HANA](#)
- Central Technical Guide Note for Built-In Functionality: [#2738406](#)
- Contact SAP for a free Digital Access estimation service via License.Compliance@sap.com

Documents				
Items (29) <input type="text" value="Enter Document Type"/>				
Type	Total Weighted Count	Item	Count	Weighted Count
Sales Document	5496.000	Sales Order Line Item	16	16.000 >
		Sales Contract Line Item	0	0.000 >
		Sales Quote Line Items	0	0.000 >
		Sales Scheduling Agreement Releases	5480	5480.000 >
Purchase Document	17.000	Purchase Order Line Item	0	0.000 >
		Purchase Requisition Line Item	17	17.000 >
		Purchase Scheduling Agreement Releases	0	0.000 >

Built-in Functionality

- Technical identifier („SAP Passport“) is sent to distinguish calls from SAP and non-SAP sender applications
- Within Digital Core (both S/4H and legacy ECC) call is logged and documents are counted in case technical identifier is missing
- Requires a minimum Support Package level for sending and receiving SAP systems
- The counting functionality for yourself is shipped earlier than the audit functionality for your annual Basic License Audit.

Document Type	Document Item	Σ WF-BATCH	Σ GSSA
Financial Document	Journal Entry Item	0	443
Financial Document		0	443
Invoice Document	Billing Document Line Item	0	0
	Supplier Invoice Line Item	1	55
Invoice Document		1	55
Manufacturing Document	Production Order	0	0
	Process Order	0	0
	Repetitive Manufacturing Confirmations	0	0
Manufacturing Document		0	0
Material Document	Material Document Line Item	4	170
Material Document		4	170
Purchase Document	Purchase Order Line Item	0	279
	Purchase Scheduling Agreement Releases	0	0
	Purchase Requisition Line Item	0	116

Estimation Note (workaround)

- Estimation based on how documents have been entered into the system (via specified technical users)
- In cases of doubt, results will lean higher versus lower to avoid being misleadingly optimistic

Placeholder



0.00	4,275.00	11,850.00	
990.00	20,280.00	12,990.00	
	20,209.00		3,024.00
	56,965.00		21,352.00
		3,579.00	15,000.00

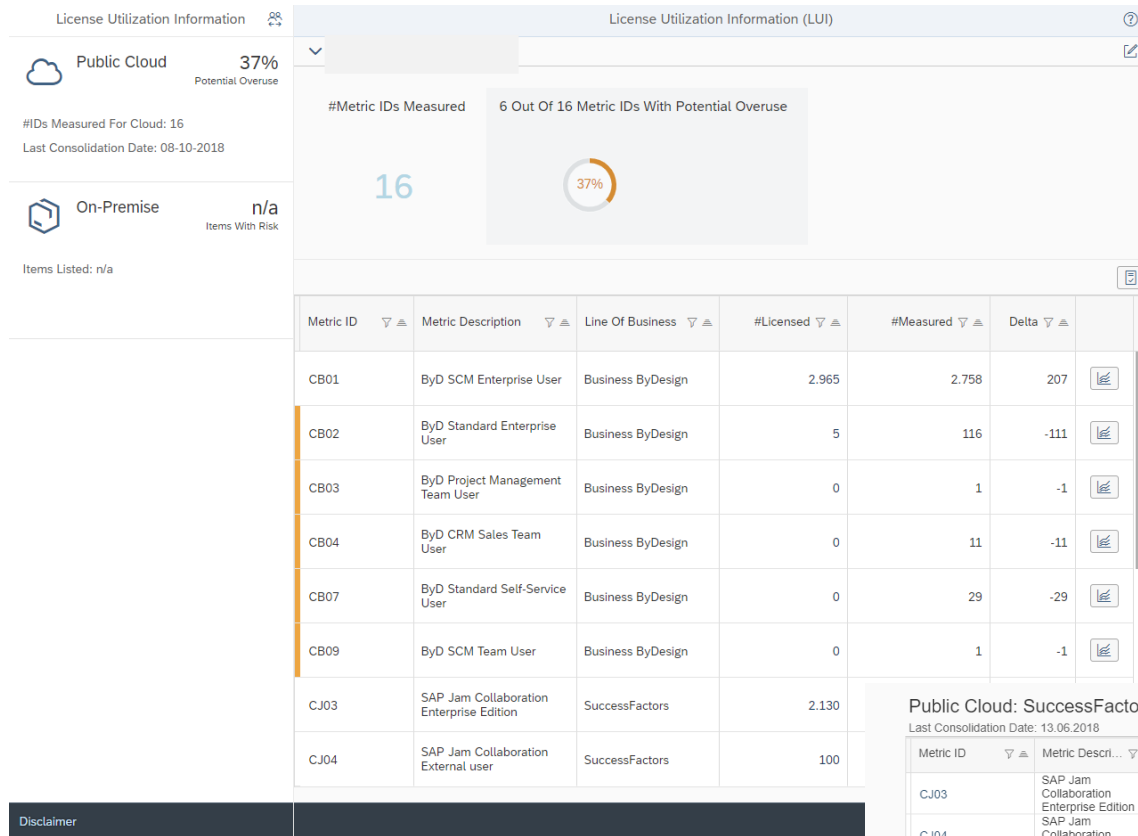


With Digital Access

It is easier for me to manage my SAP Software Assets

Transparency with “License Utilization Information” Dashboard

Additional information:
 • See [link](#) for detailed material regarding the LUI Dashboard

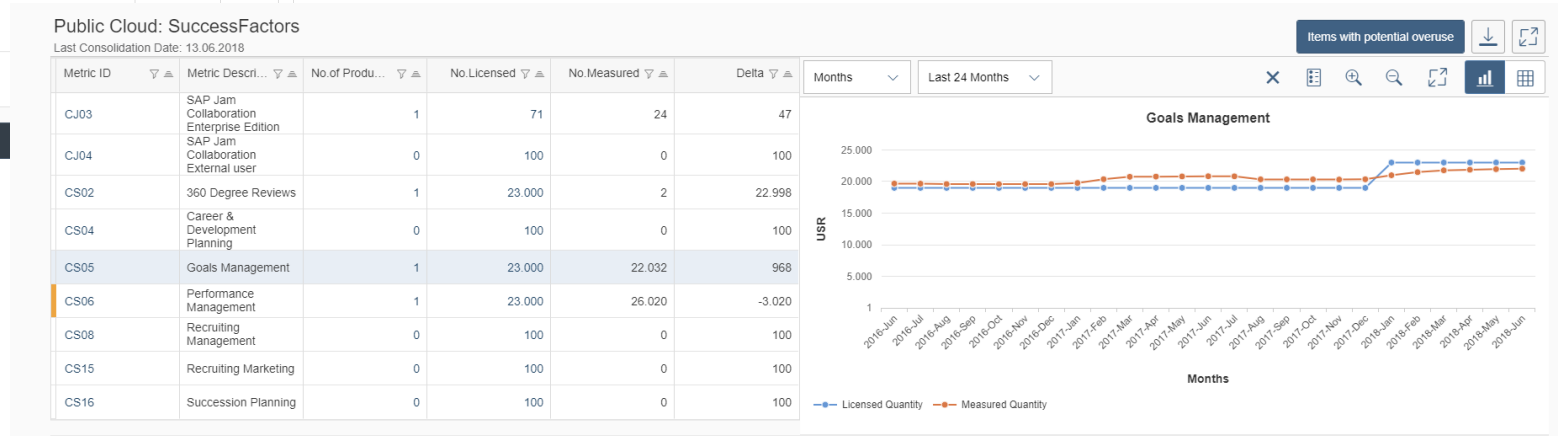


Cloud

- Monitor your SAP license entitlement and consumption anytime

onPrem

- You have access to the same tools as the SAP License Auditors
 → No need that an audit results in a surprise

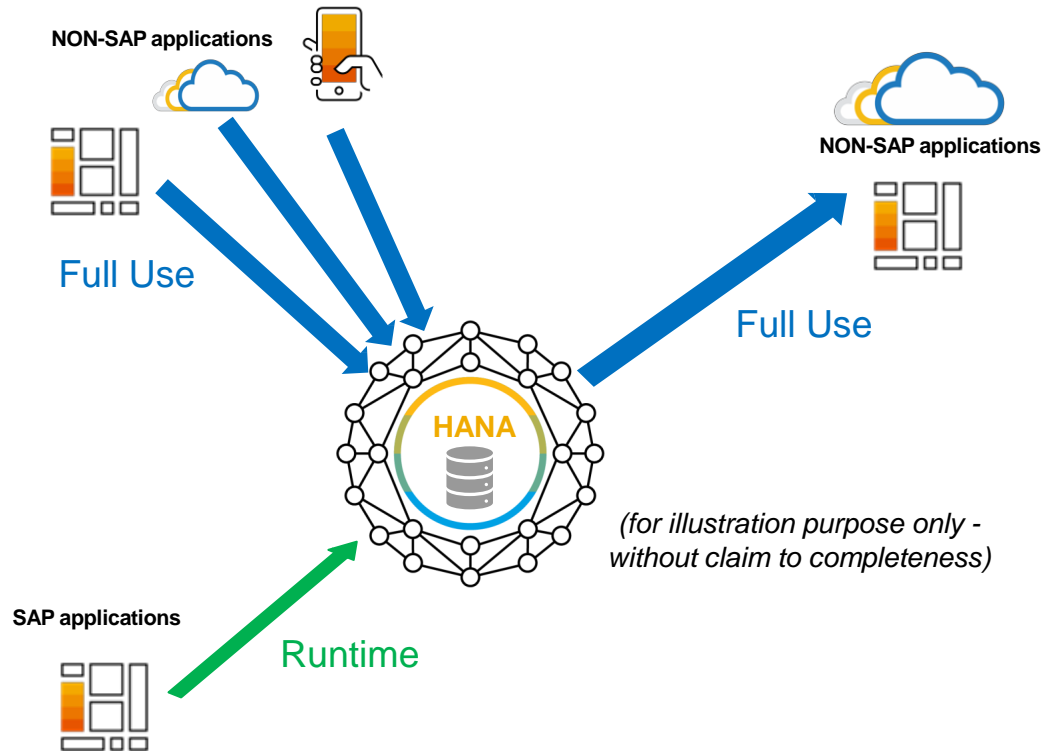




I like the transparency and proactiveness of
SAP's Global License Audit & Compliance program

SAP wants to help you to avoid surprises when being audited

Additional Example: HANA Runtime license



- Transparency
→ **Measurability** of HANA Runtime license model
- Clarity
→ **HANA Runtime license guidance**



With all that SAP wants to...

- ... Enable you achieving and maintaining license compliance
- ... Make it easier for you to get „peace of mind“ on SAP Software Assets
- ... Act in a fair, transparent, and predictable way – be a trusted partner for you

Take the Session Survey.

We want to hear from you!
Be sure to complete the session evaluation on the **SAPPHIRE NOW** and **ASUG Annual Conference** mobile app.



Presentation Materials

Access the slides from 2019 ASUG Annual Conference here:

<http://info.asug.com/2019-ac-slides>

Q&A

For questions after this session, contact us at
Matthias.Medert@sap.com .

Let's Be Social.

Stay connected. Share your SAP experiences anytime, anywhere.

Join the ASUG conversation on social media: **@ASUG365**

#ASUG

