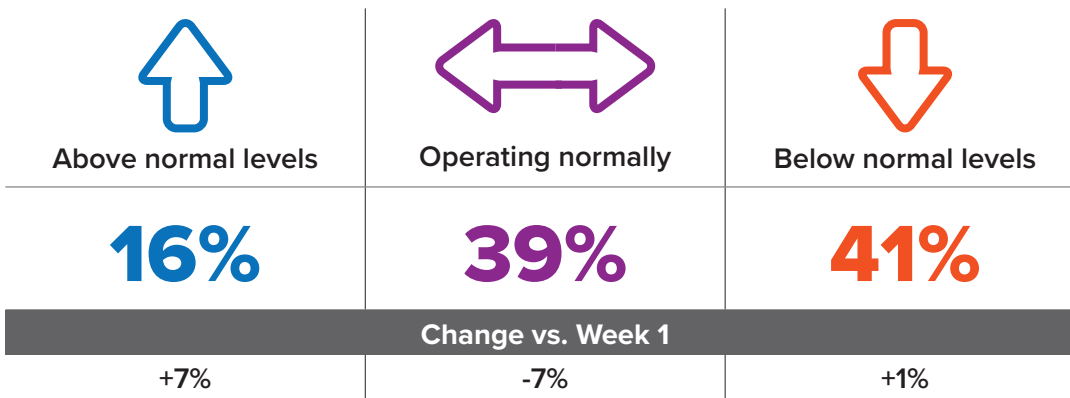


Status of Operations Due to COVID-19

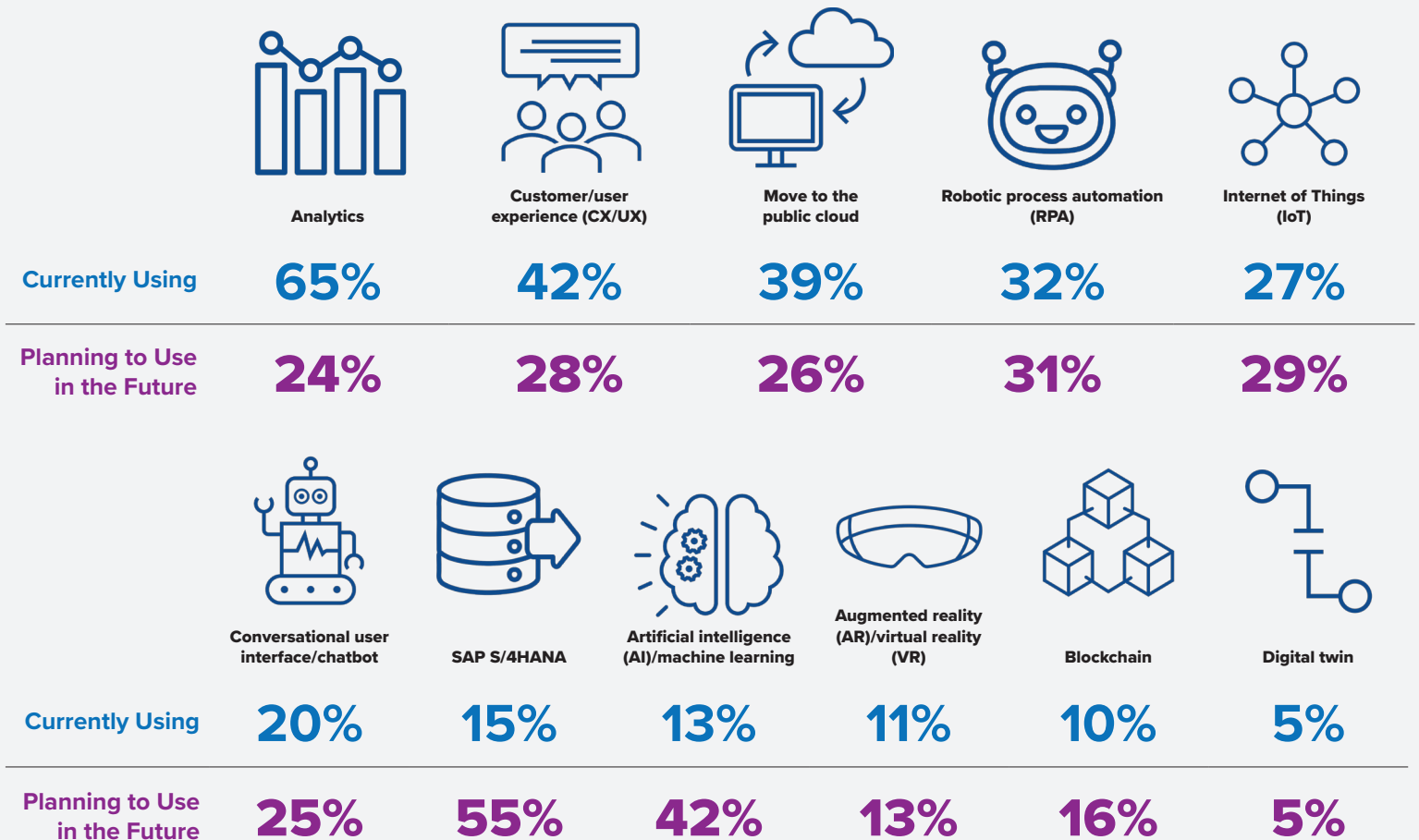


“We are learning how to operate beyond physical distance, which is proving helpful in understanding the unique pros/cons of being regional versus centralized.”



Technology Use During COVID-19

Almost half of respondents are moving forward with planned technology implementations. They have adopted or are planning to adopt the following technologies.



Based on a total of 776 responses and 606 completes. Statistically sound with a margin of error = +/- 4% at 95% confidence. Q. Which of the following technologies is your organization using, or planning to use in the next 12 months? (Select all that apply for each.)