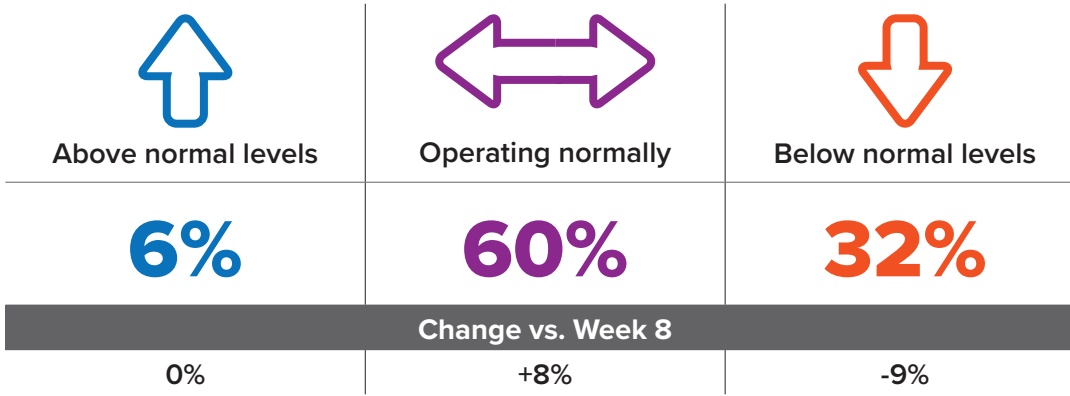



## Status of Operations Due to COVID-19

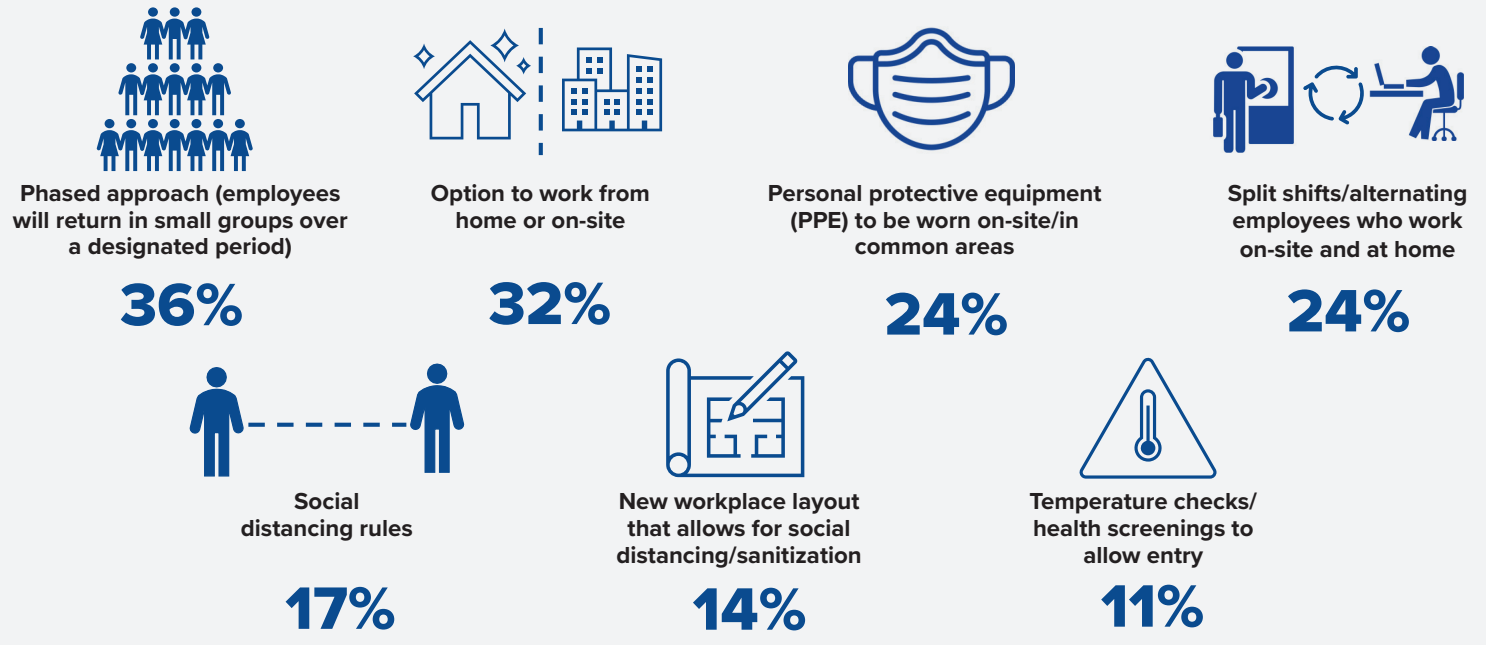


“Some areas [are operating] below normal. Some areas, mainly those that mitigate the impacts of a pandemic, are operating above normal levels.”



## What the Return to Work May Look Like

In respondents' own words, the return to work will involve a phased approach, with some flexibility to determine where they will work.



## Activities Respondents Are Most Likely to Resume

When things open up, respondents are least likely to avoid activities that last for a shorter duration and that allow for more personal space.

