



# SAP Data Hub – Turning Disparate Data into Valuable Assets for Digital Innovation

Daniel Rutschmann

Sr. Director SAP Data Hub Solution Management, SAP  
Session ID ASUG84047

# About the Speakers

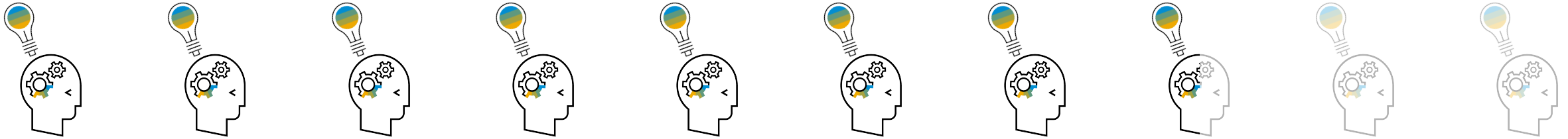
## **Daniel Rutschmann**

- Sr. Director, SAP Data Hub Solution Management, SAP
- I have worked in the software and technology industry for about two decades. Over the years, I took on different roles from consulting to solution management and business development. In my current role I'm part of the solution management and go-to-market team focused on SAP Data Hub.
- In my free time I enjoy woodworking and being outdoors with our dogs.

# Key Outcomes/Objectives

1. Get an understanding of SAP Data Hub
2. Learn how customers innovate with SAP Data Hub
3. Hear about a new announcement regarding SAP Data Hub

# Enterprises are struggling to maximize value from their existing data assets



**86%** of enterprises claim that they are not getting the most out of their data

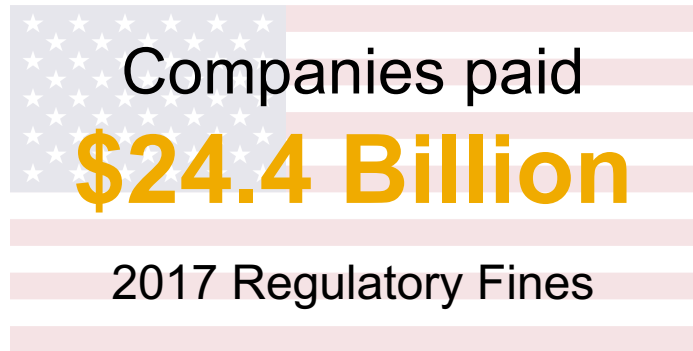
# Enterprises are struggling with trusted data when using intelligent algorithms



**84%** are concerned about the quality of the data  
using to feed intelligent algorithms

**\$9.7M** is the average financial impact of poor data quality  
on organizations per year

# Enterprises are struggling with compliance

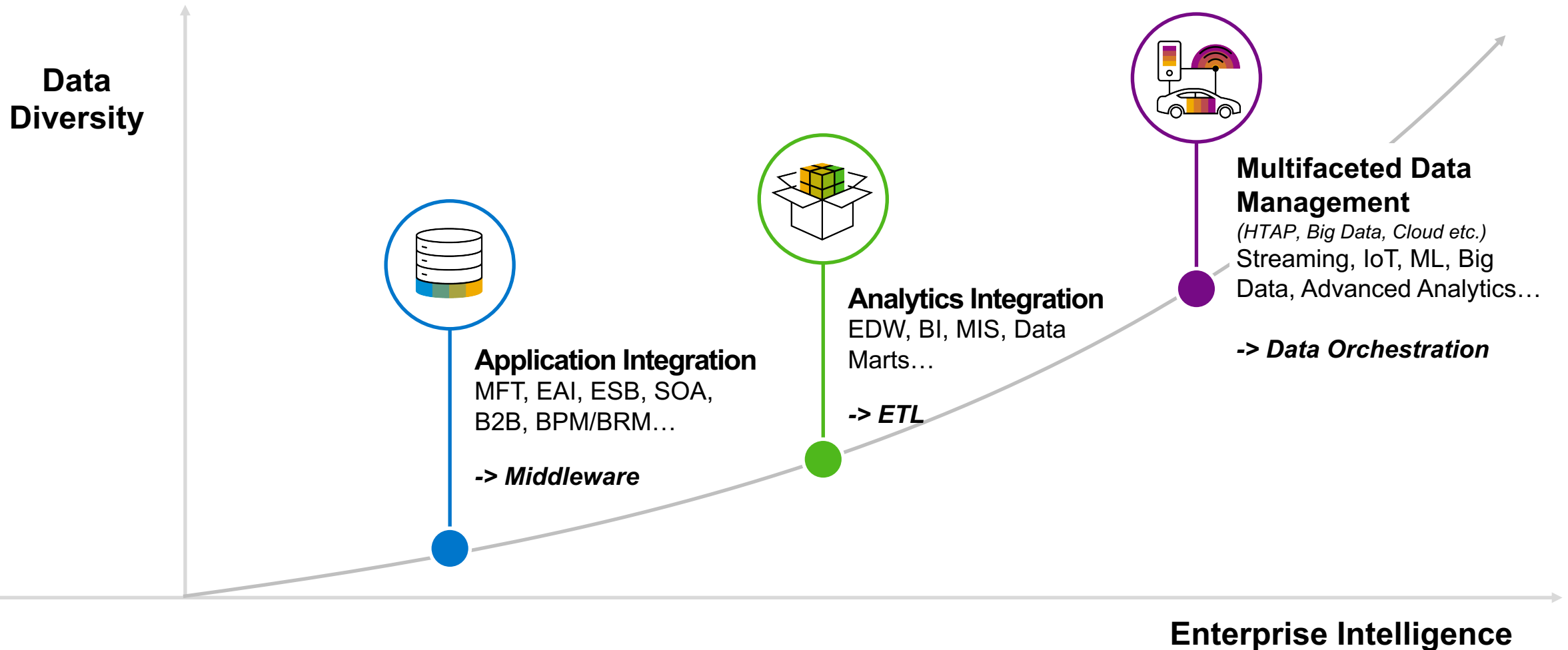


Regulatory compliance can cost as much as **\$7k per employee**

**\$14.5M** is the average annual cost for organizations that experience data protection non-compliance problems



# The evolution of data management in enterprise landscapes





**A master conductor orchestrates diverse sounds from disparate sources**

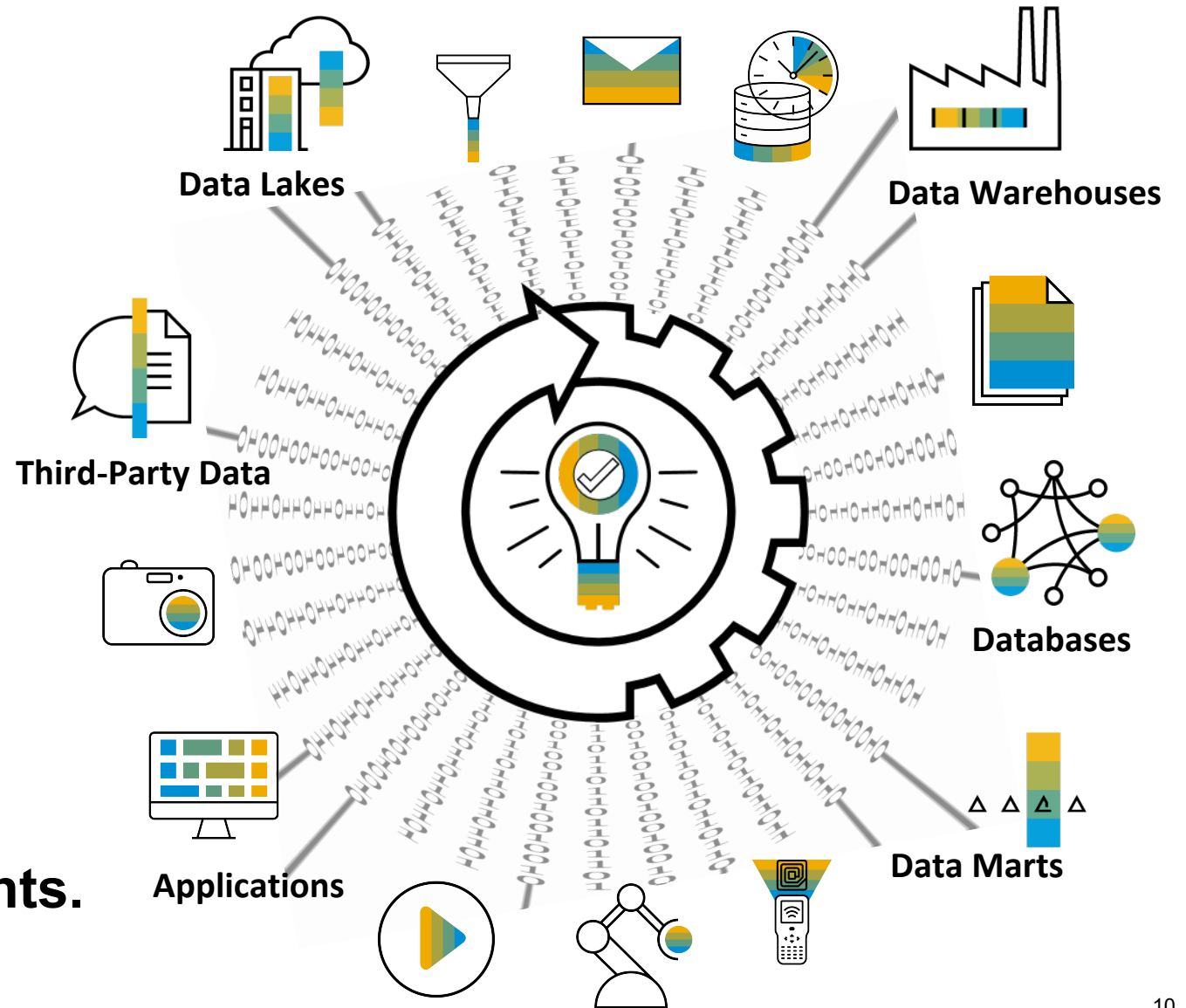


**into beautiful music**

# SAP Data Hub orchestrates diverse data from disparate sources

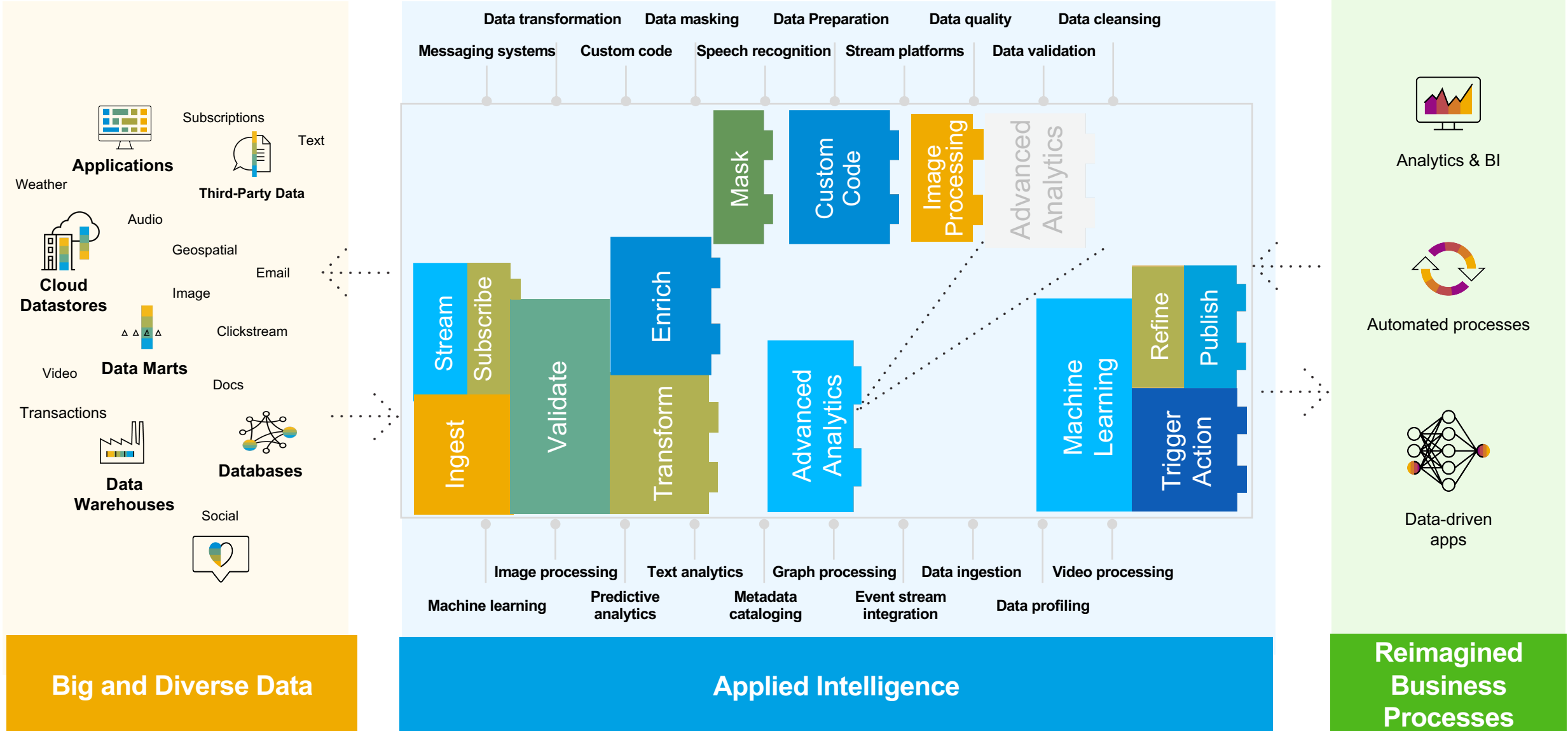


**into refined,  
governed,  
intelligent insights.**



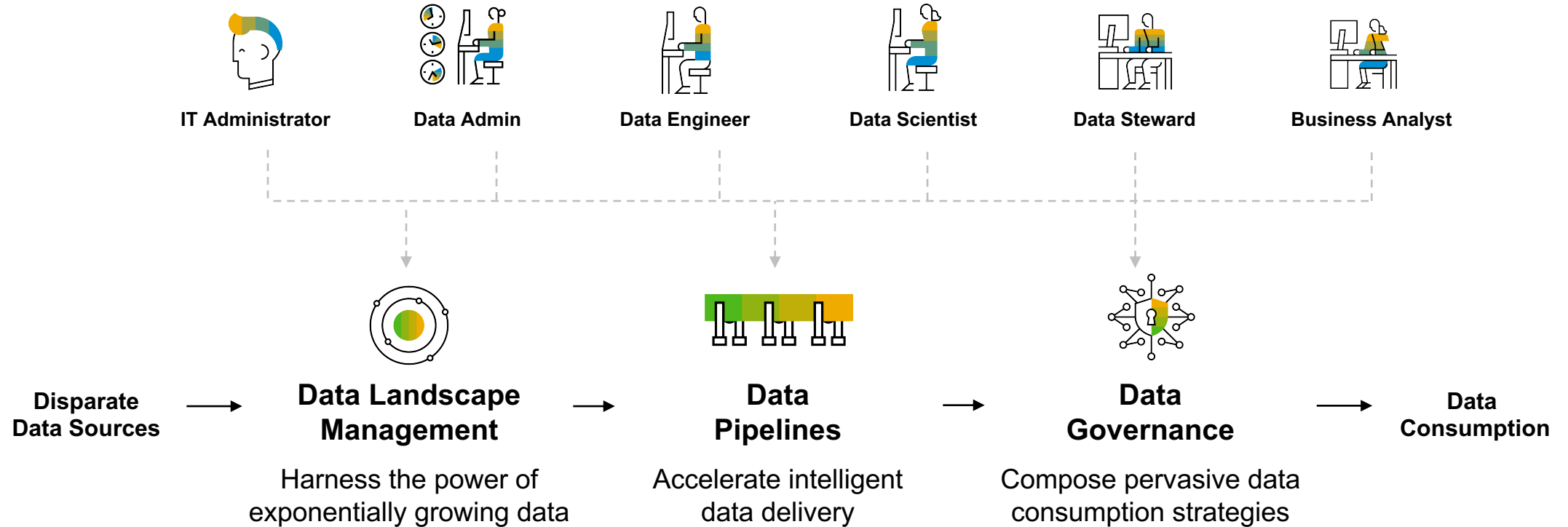
# SAP Data Hub extracts value from distributed data assets

Streamlining data-driven innovation for the intelligent enterprise

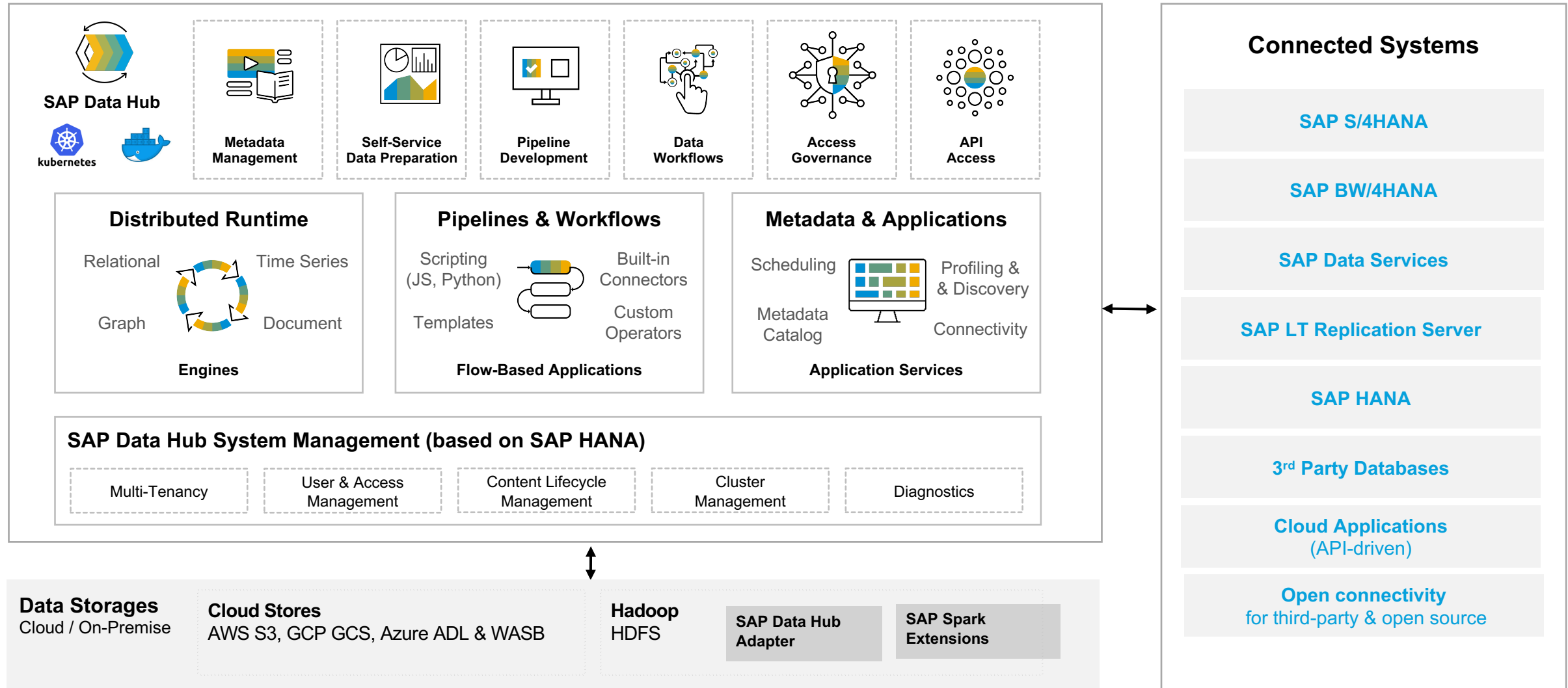


# Delivering intelligent data for the intelligent enterprise

Right data to the right users with the right context at the right time



# Architecture Overview of SAP Data Hub

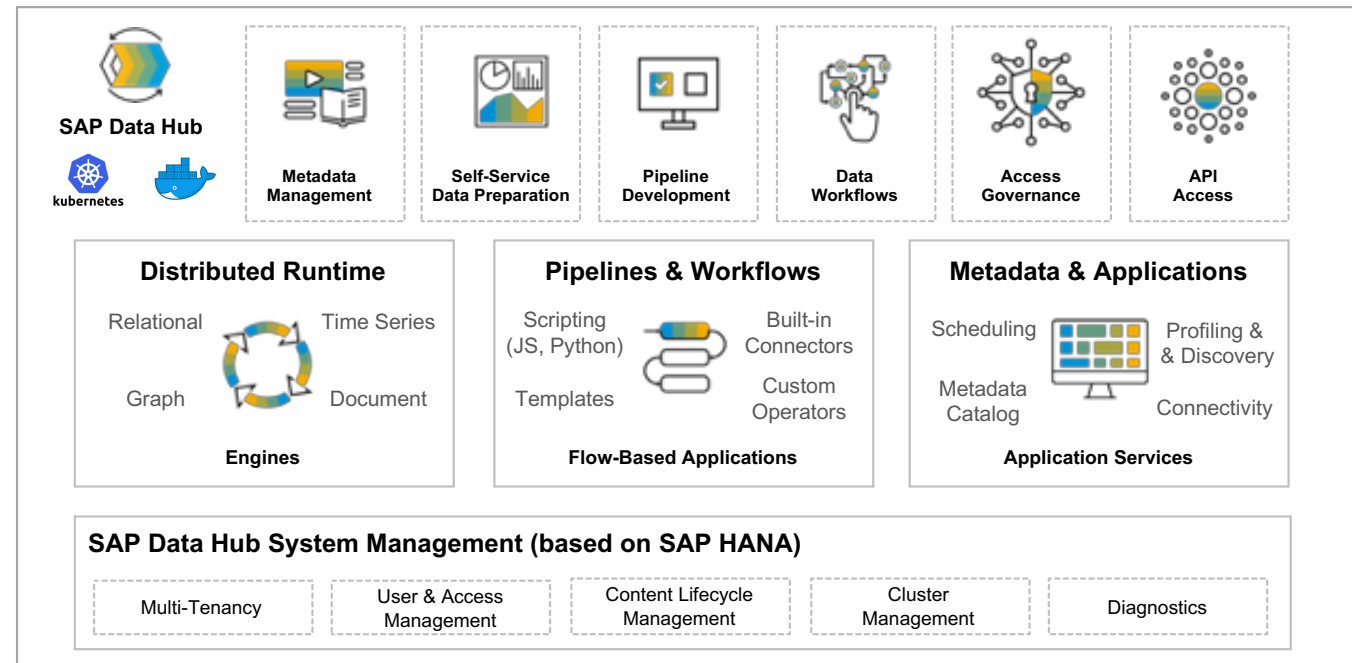


# SAP Data Hub

## Cloud Deployments

### Simplified deployment of SAP Data Hub in Cloud environments and on-premise

- All necessary components are fully containerized and delivered as a Docker images
- Decoupling data processing (in Kubernetes) and data storages (any supported cloud stores, databases or Hadoop)
- Deployment in multiple Kubernetes managed environments\*
  - Leveraging managed cloud Kubernetes Services in AWS, Microsoft Azure, Google Cloud Platform,
  - Support for Private Cloud & on-premise installations, e.g. Red Hat, SUSE, Cisco, Virtustream etc.

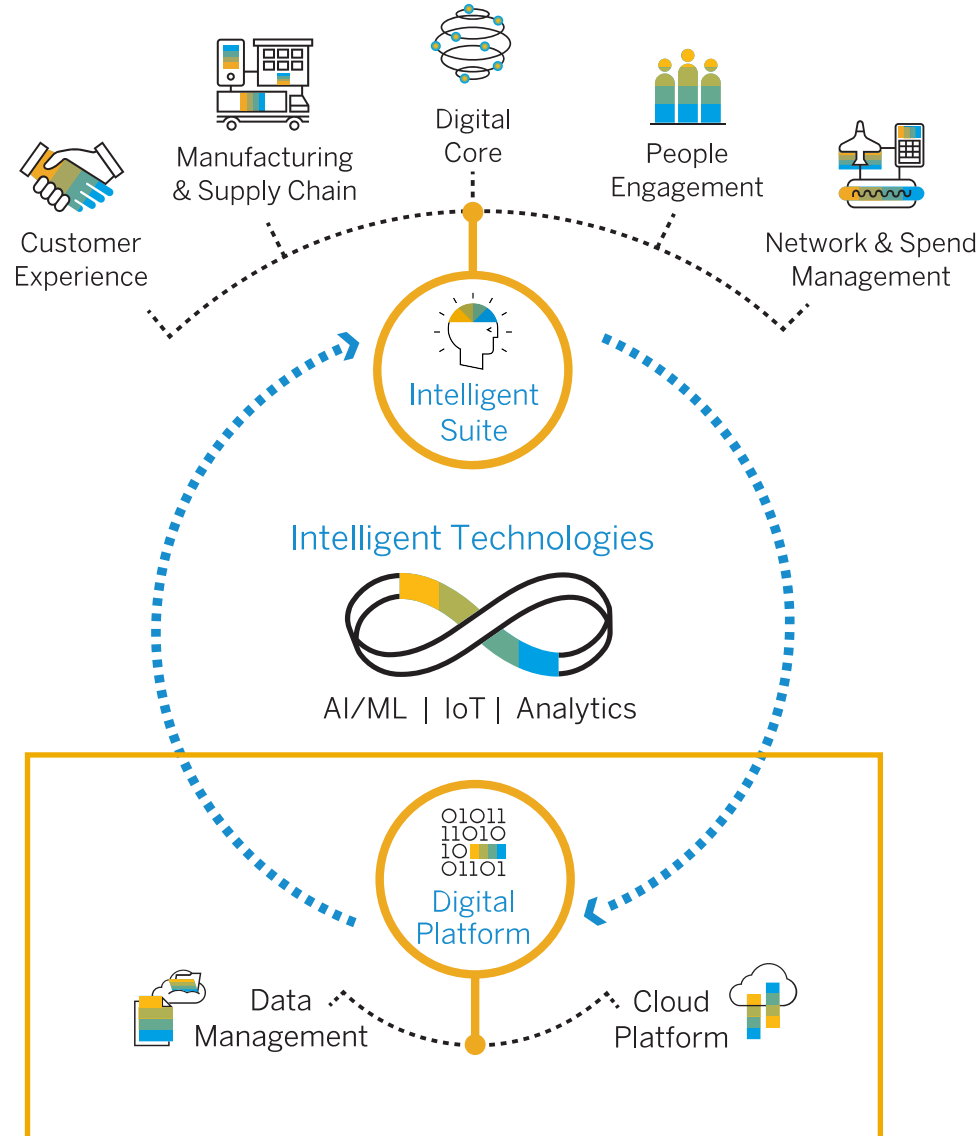


\* See Product Availability Matrix for detailed version dependencies

# SAP Strategy – Deliver the Intelligent Enterprise

THE INTELLIGENT ENTERPRISE features **3 KEY COMPONENTS**:

- 1 Intelligent Suite
- 2 Digital Platform
- 3 Intelligent Technologies



2 Digital Platform

**SAP DATA HUB**

Discovers, refines, governs, orchestrates any type, variety and volume of data across distributed landscapes

# Use Cases and Customer Success Stories





# Use **SAP Data Hub** to reimagine your business processes using ...

## Business Application Transformation



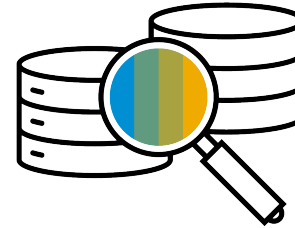
Streamline innovation initiatives around Business Applications, supporting enterprise transformation programs

## IoT Ingestion and Orchestration



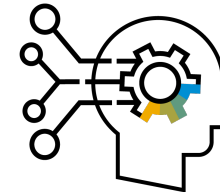
Transform IoT event streams into enterprise-ready data, and derive actionable insights

## Data Warehousing



Build a multifaceted data warehouse, across diverse and distributed data assets

## Data Science and Machine Learning



Streamline data science and machine learning, from modeling and development to operations, across all enterprise data assets

## Metadata Catalog and Governance

Automate metadata discovery, understand data sources, prepare and govern according to data standards, privacy, and security

# IoT Data Ingestion and Orchestration and SAP Data Hub

Integrate and process disparate data from messaging systems and high-volume cloud storages

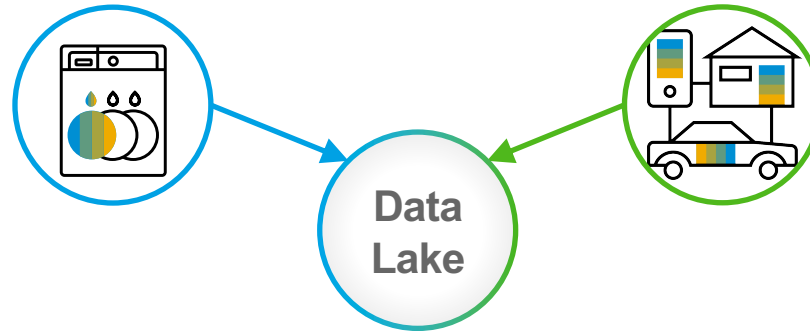


- Tackle the challenge of integrating and analyzing vast quantities of raw data and events from disparate semi-structured sources with low-level semantics and no business context
- Solve the point-to-point challenge of distributed heterogeneous environments spanning messaging systems, cloud storages, SAP data management solutions, and enterprise apps
- Event-driven pipelines scaling to executions of many pipelines in parallel, at any time

# Customer-driven Product Insight through IoT ingestion

## The problem

Home4You manufactures **Smart Dishwashers** that collect sensor and machine data.



They also maintain an **IoT Collection** of user behaviors.

Feeding this information to the **Data Lake** will help them build better dishwashers

## But there are some problems:

6 million+ devices generated **>16 TB** streaming data a day

The data collected isn't easily understood



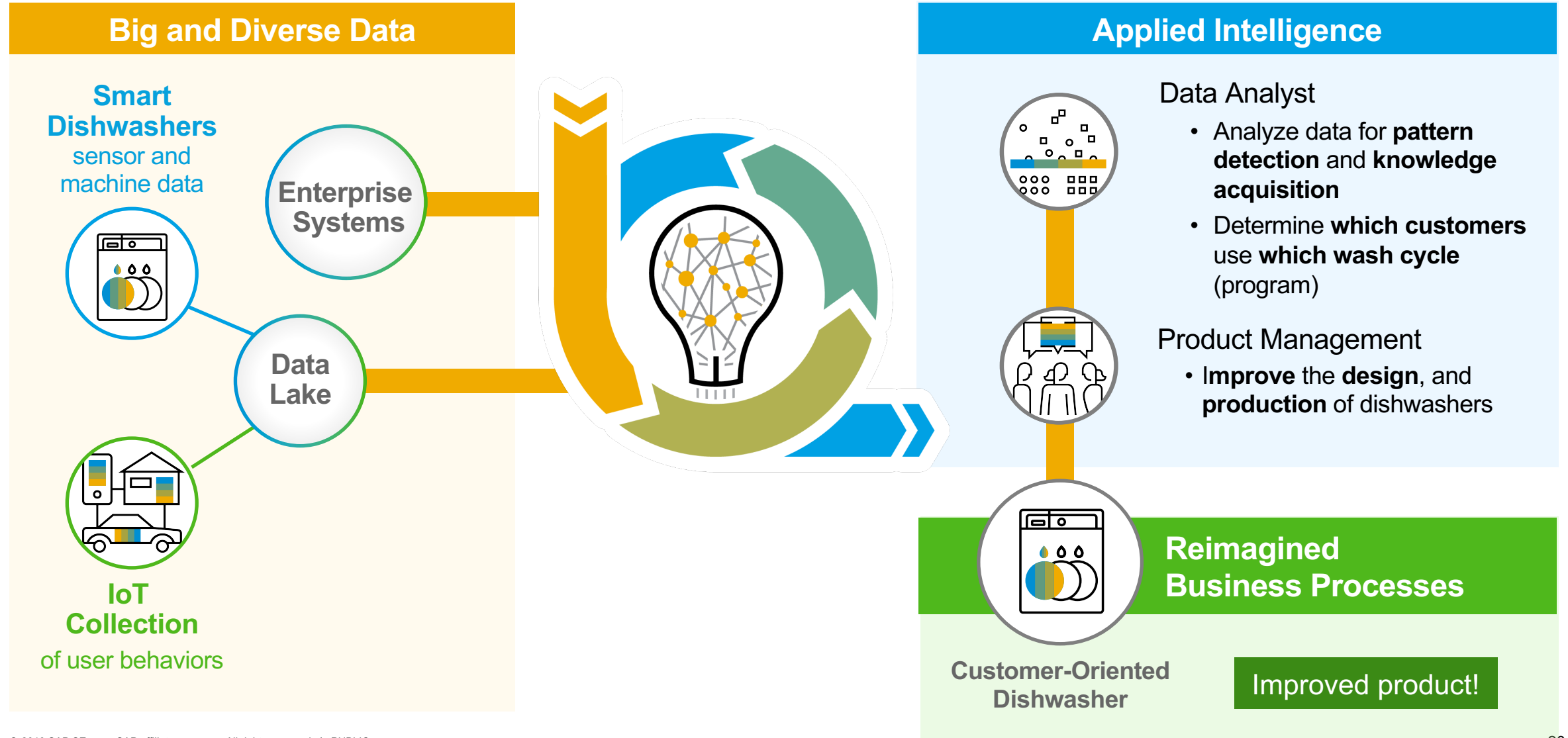
Incoming data **isn't quality checked**

Enterprise data **isn't connected.**

The enterprise is fragmented. There are operational silos. No feedback loop between data scientists and operational systems.

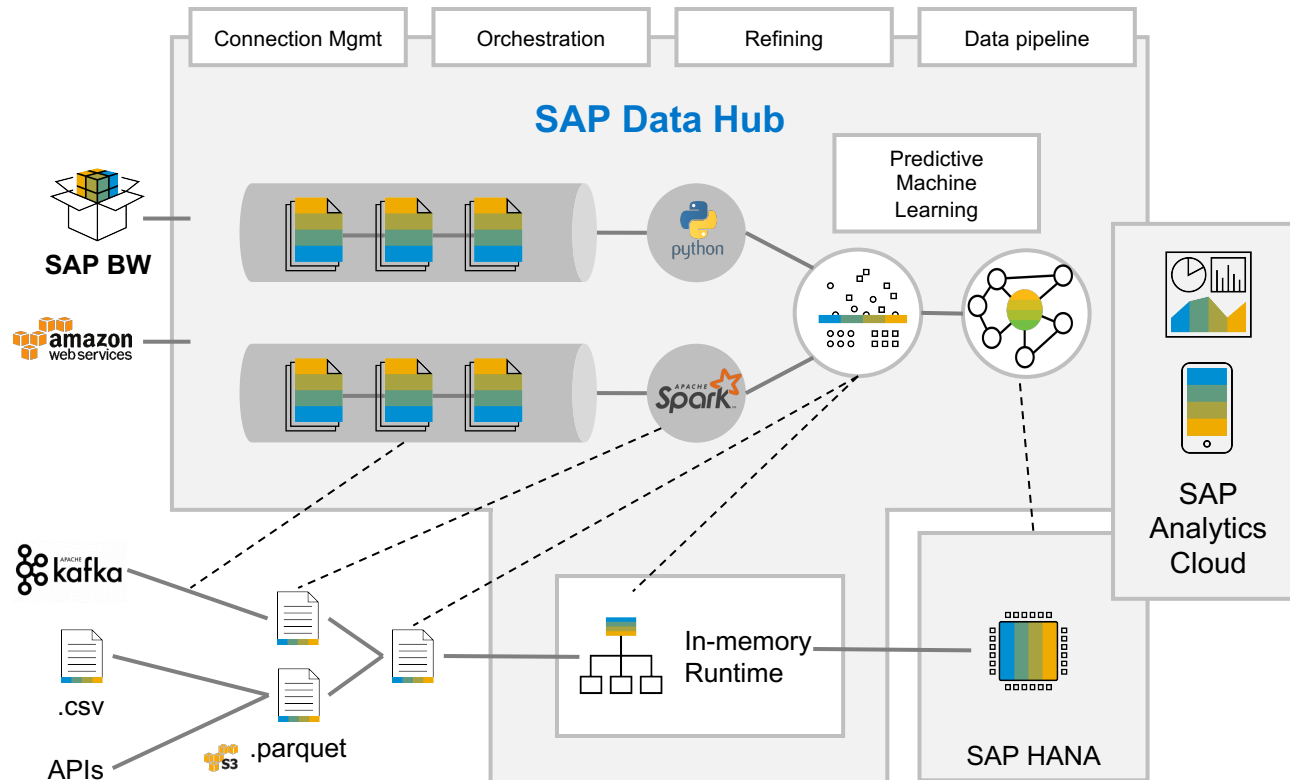
# Customer-driven Product Insight through IoT ingestion

The solution with SAP Data Hub



# Customer-driven Product Insight through IoT ingestion

## The architecture and its capabilities



## DISCOVER

- Connect any distributed and heterogeneous enterprise data
- Ingest data via streaming, batch, replication

## REFINE

- Cleanse, validate, enrich data
- Machine learning algorithms
- Relate IoT data to structured data

## GOVERN

- Catalog metadata from IoT, BW, and other applications
- Data lineage to data origins
- Data anonymization for privacy

## ORCHESTRATE

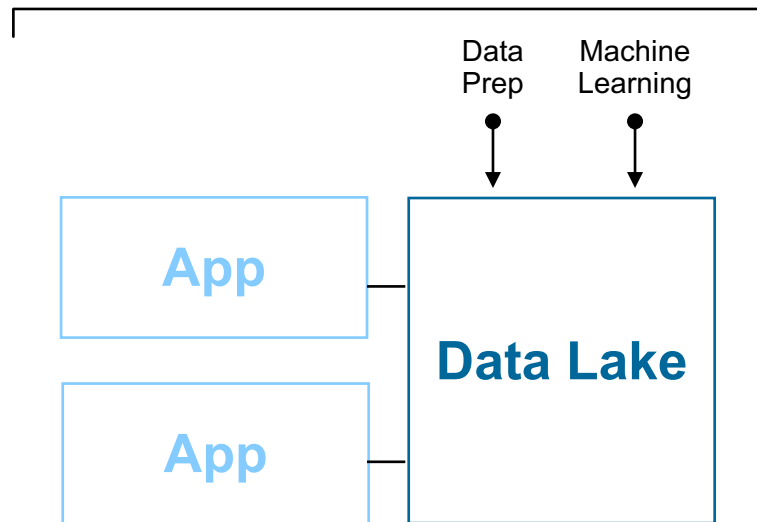
- Define, execute and control modular data pipelines
- Enable real-time action and decision making faster with less costs

# Data Science & Machine Learning Data Management and SAP Data Hub

Prepare data from all sources to increase effectiveness of AI/Machine learning algorithms



**SAP Data Hub**



## DISCOVER

- Integrate variety of data sources with open data landscape management
- Ingest any type of data with one tool

## REFINE

- Process machine learning models leveraging SAP and non-SAP engines within the same tool
- Quickly operationalize machine learning outcomes to enterprise processes

## GOVERN

- Monitor, profile, index, publish metadata
- Prepare data with profiling and the fact sheet

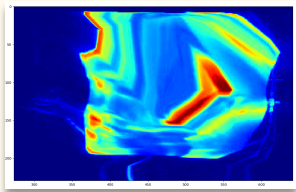
## ORCHESTRATE

- Define, execute and control modular data pipelines
- Manage high volume streams
- Leverage both SAP and open-source processing engines
- Bring IT and Data Science Teams together

# Predictive Quality in Manufacturing Plant through Data Science

## Improving Quality Management in Car Manufacturing

### Big and Diverse Data



IR images of components

PRHOOD1007	1,103	803
PRHOOD1008	1,100	800
PRHOOD1009	1,100	800
PRHOOD1010	1,100	800
PRHOOD1011	1,100	800
PRHOOD1012	1,100	800
PRHOOD1013	1,099	799
PRHOOD1014	1,100	800
PRHOOD1015	1,102	802

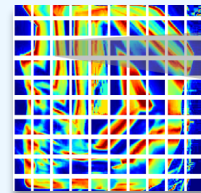
Pressure sensor measures

Table Name: PPARAM

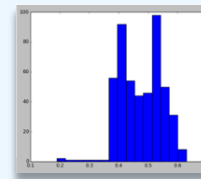
Columns	Indexes	Further Properties	Runtime Information
Name	SQL Data Type	Di...	Col
1 MATERIAL_ID	NVARCHAR	10	STR
2 HEAT1	INTEGER		INT
3 HEAT2	INTEGER		INT
4 PRESSMAX	INTEGER		INT
5 PRESSOUR	INTEGER		INT

Material Master

### Applied Intelligence



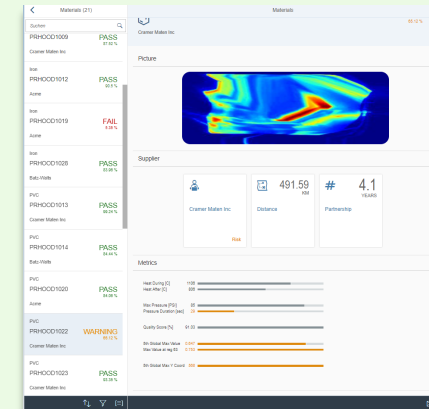
ML-based extraction of image features



Predictive Analytics

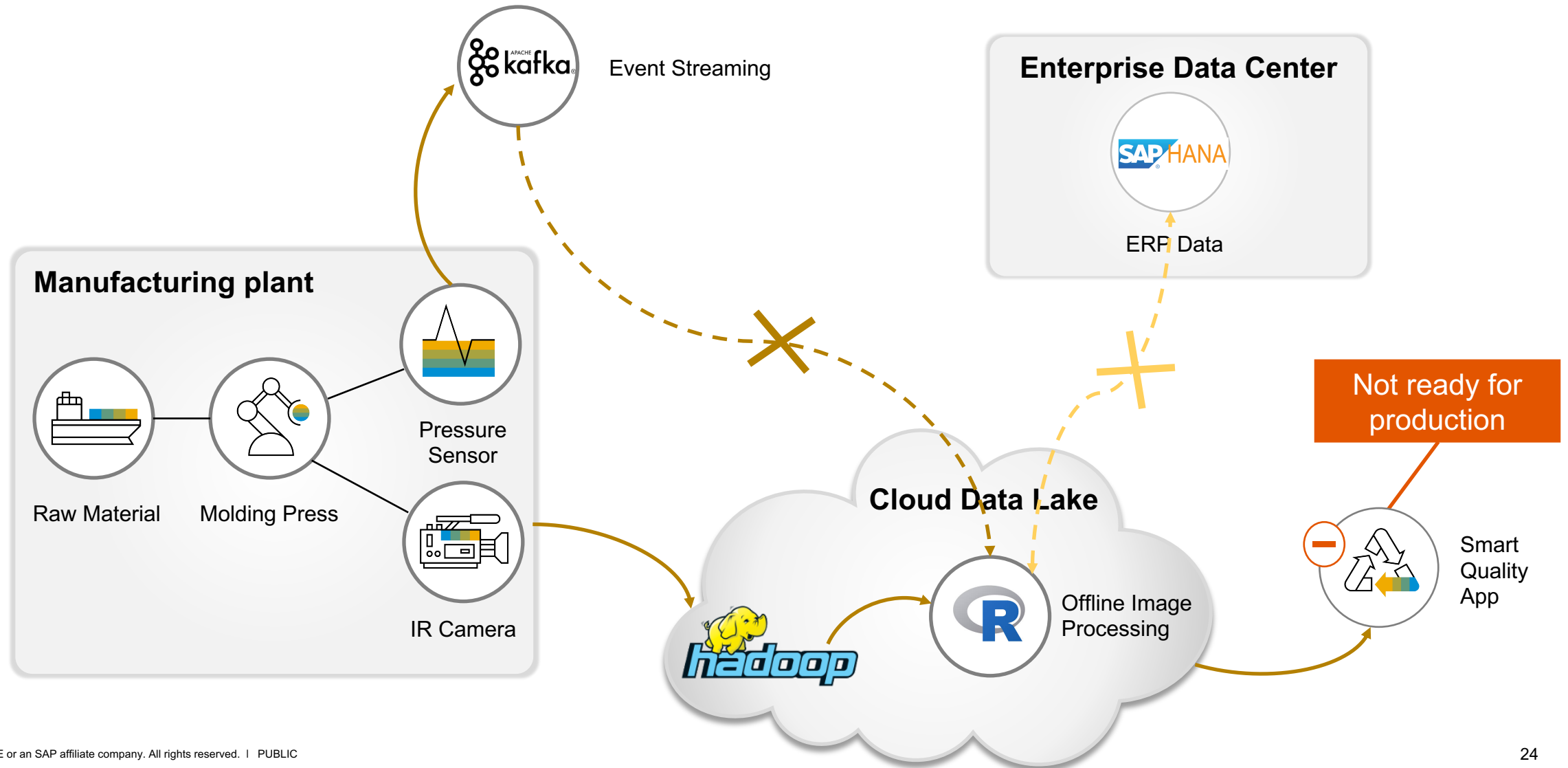
### Reimagined Business Processes

#### Smart Quality App



# Predictive Quality in Manufacturing Plant through Data Science

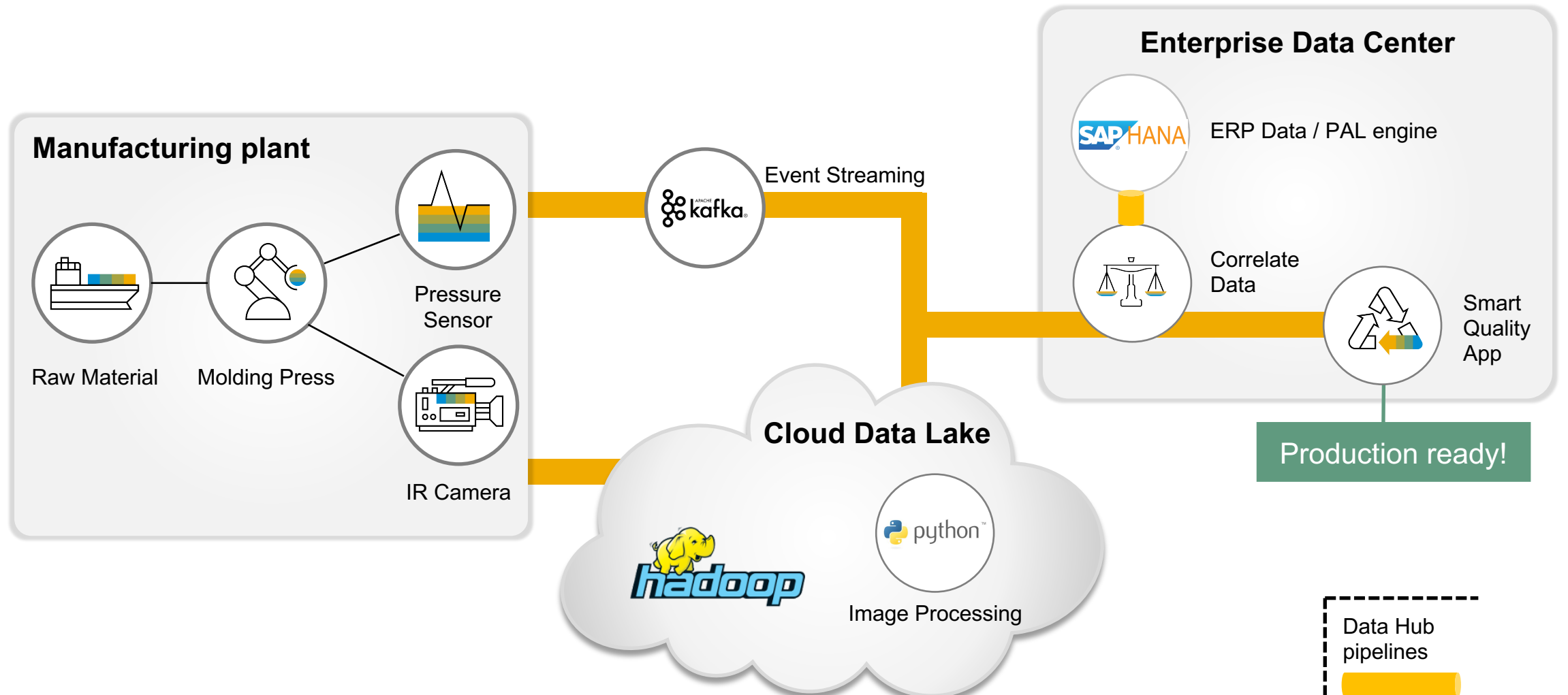
The prototype without Data Hub: could not go beyond experimental stage



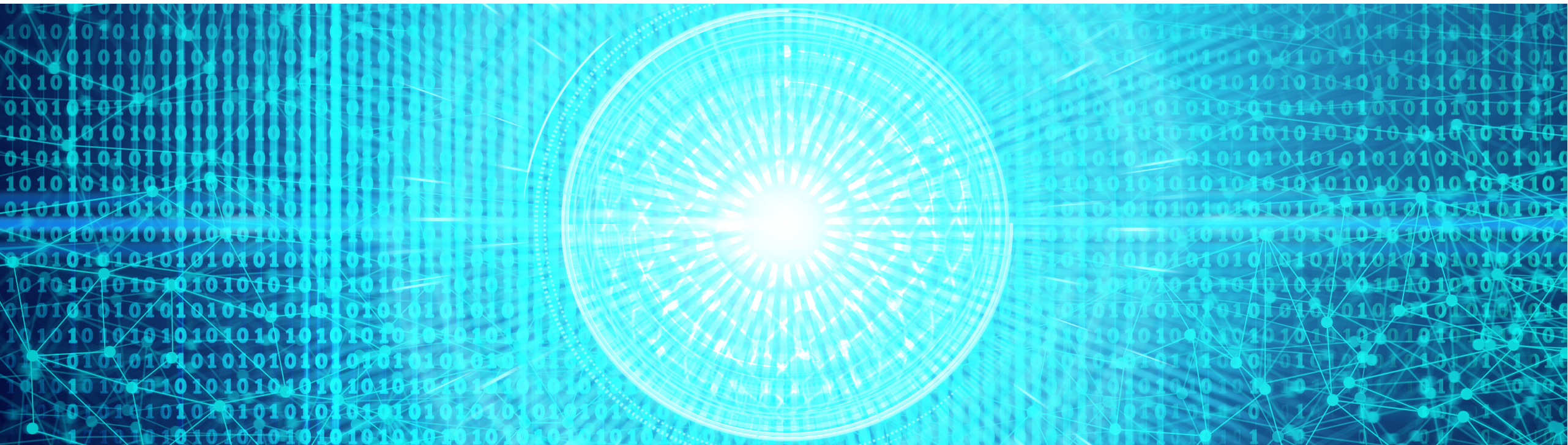


# Predictive Quality in Manufacturing Plant through Data Science

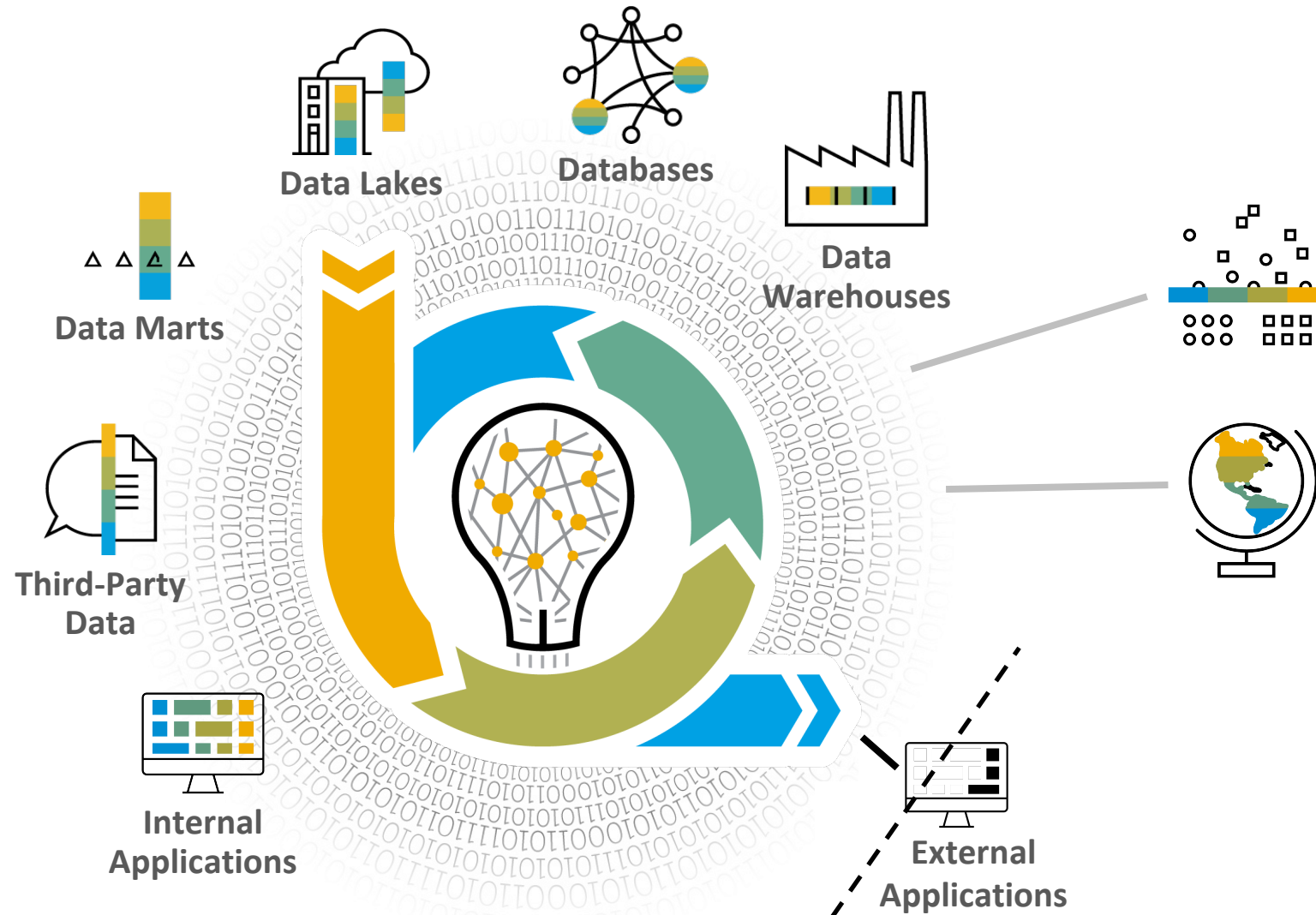
The project with Data Hub: Data Science streamlined across the landscape!



# Summary



# SAP Data Hub Simplifies Distributed Data Assets



**No lift and shift.  
No storing.  
No point-to-point.**

**No matter the type.**

**No matter the location.**

**No Silos.**



# Key Take-Aways

## SAP Data Hub ...



- Enables you to extract value from distributed data.
- Connects assets and transforms them into business insights.
- Discovers, refines, governs, and orchestrates any type, variety, and volume of data across your distributed data landscape.
- Applies machine learning and intelligent technologies to reimagine your business process.
- Leverages SAP engines and open source engines across distributed infrastructures, minimizing data movement.
- Accesses structured, unstructured, streaming data across all data types.
- Enables you to get the most out of your data, simplify visibility across your landscape, provide trust in intelligent data, with governance, security, compliance.

# How Does a Global Manufacturer Evolve to Compete in a **Service-Oriented World?**

## Delivering “air as a service” to a **global customer base**

Air compressors built by Kaeser Kompressoren SE are in constant use, many in some of the world’s most demanding manufacturing environments. Proactive field support helps ensure customer satisfaction, but truck rolls are expensive. Gathering sensor data remotely from the Internet of Things (IoT) might work to minimize on-site visits, but only if that data could be processed and combined with customer data from existing business systems. If it could interact efficiently with all this data, Kaeser could **seize new opportunities to meet customer needs** for products, services, and responsiveness around the world.

THE BEST RUN 



ASUG84223: KAESER KOMPRESSOREN: "Smart Air" Strategy Execution

# New Forrester Study

FORRESTER®

Forrester Opportunity Snapshot: A Custom Study Commissioned By SAP | April 2019

## Hybrid Data Management Drives Innovation And Growth

Utilize A Modern Data Architecture That Enables Enterprise Data Fabric

GET STARTED ▶

“Hybrid data management enables the data fabric architecture by delivering trusted and integrated data to support business apps and insights by seamlessly accessing, orchestrating, modeling, governing, and sharing any type of data, whether on-premises or cloud.”

[Source: Forrester Opportunity Snapshot – Hybrid Data Management Drives Innovation And Growth](#)

# Get Started with SAP Data Hub

Find out more about  
SAP Data Hub  
[sap.com/datahub](https://sap.com/datahub)



Try SAP Data Hub,  
[developer edition](#)

Try SAP Data Hub,  
[Trial edition](#)

Take free  
SAP Data Hub [Course](#)

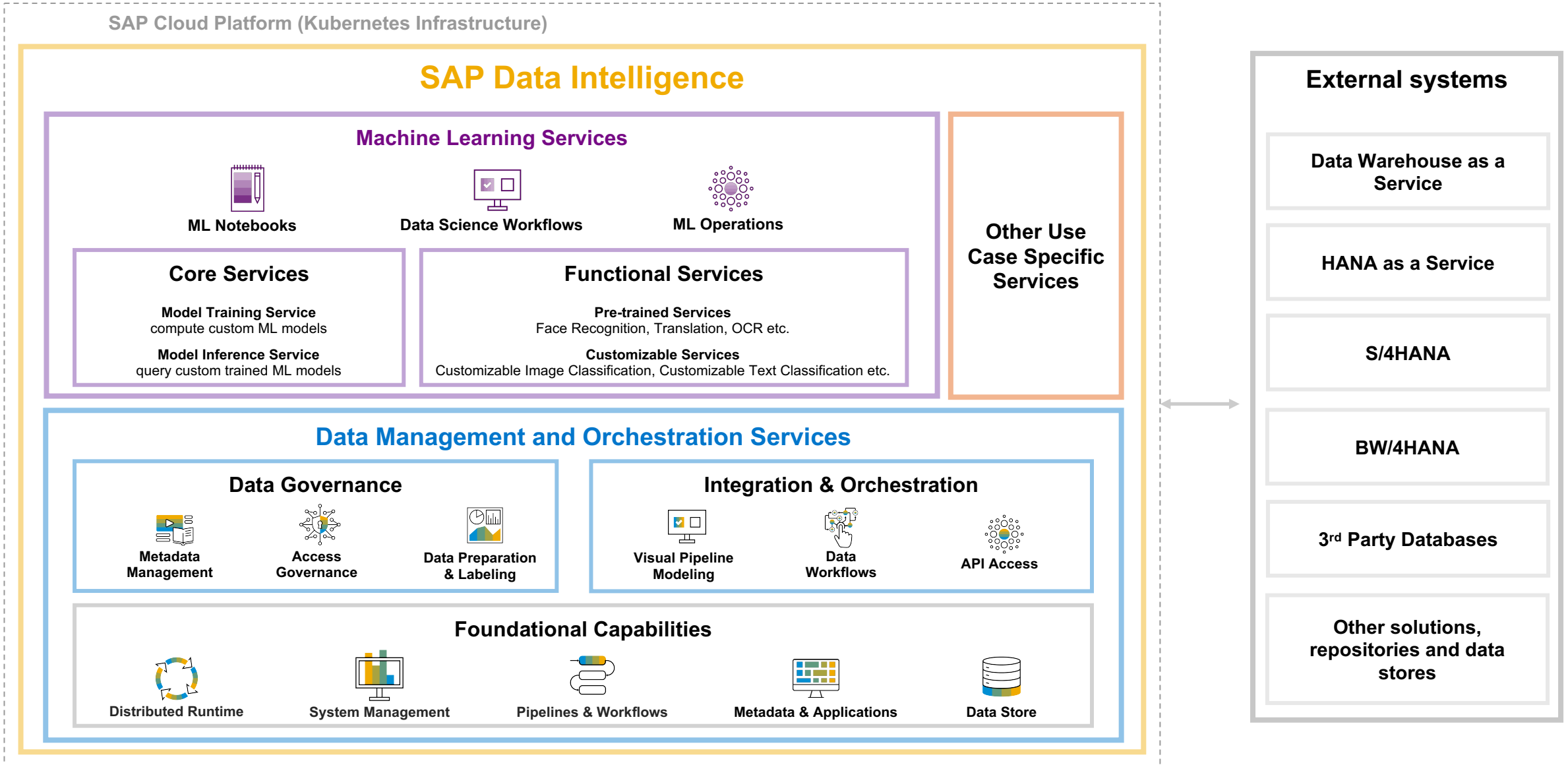
Read [State of Big Data Report](#)

# New Announcement



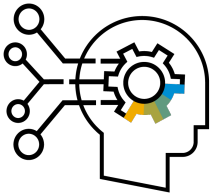


# NEW: SAP Data Intelligence



# SAP Data Intelligence

Comprehensive solution for scaling artificial intelligence, extracting value from distributed data, and embracing open technologies



## Scale Artificial Intelligence

Design, deploy, and deliver AI across the enterprise

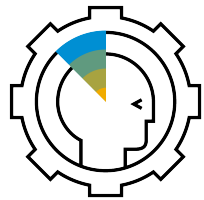
---



## Extract Value From Distributed Data

Connect data assets and transform them into business insights

---

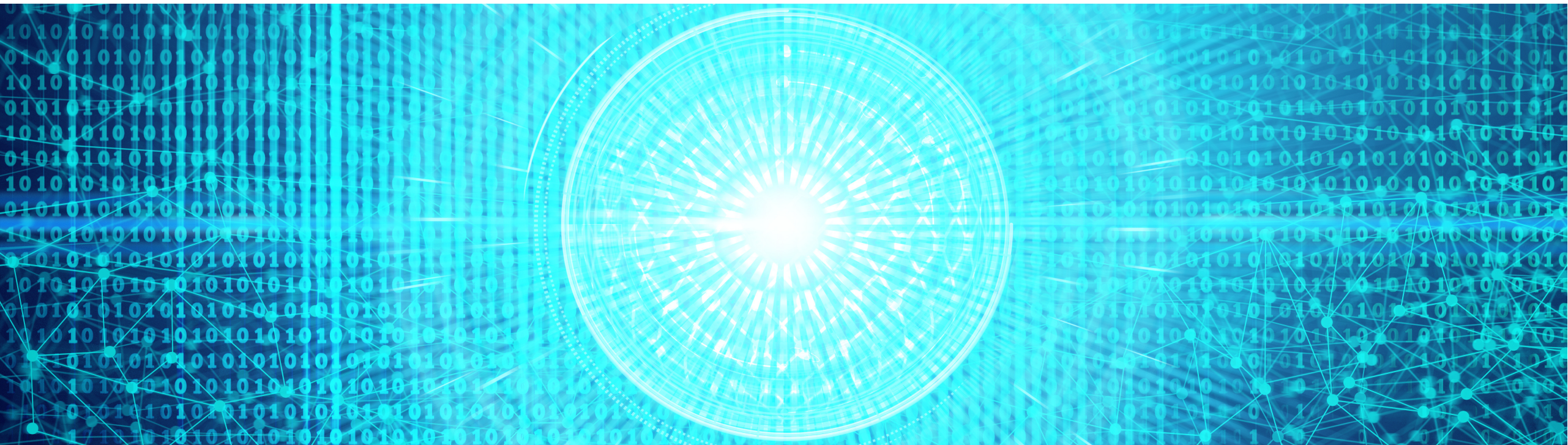


## Embrace Open Technologies

Take advantage of the latest technologies

---

# Connect with Us and Q&A



# Take the Session Survey.

We want to hear from you! Be sure to complete the session evaluation on the SAPPHIRE NOW and ASUG Annual Conference mobile app.



# Presentation Materials

Access the slides from 2019 ASUG Annual Conference here:

<http://info.asug.com/2019-ac-slides>

# Q&A

For questions after this session, contact contact me at  
[daniel.rutschmann@sap.com](mailto:daniel.rutschmann@sap.com).

# Let's Be Social.

Stay connected. Share your SAP experiences anytime, anywhere.

Join the ASUG conversation on social media: **@ASUG365 #ASUG**



# Thank you