



ENTERPRISE SOLUTIONS

# SAP Plant Maintenance Mobility Deploying a **Mobile EAM** Solution.

Visit us online:  
[www.s4ait.com](http://www.s4ait.com)

PreBilt™



BlueWorx



Get in touch:  
[info@s4ait.com](mailto:info@s4ait.com)

# Who we are:



**Alvin Szott**  
S4A IT Solutions

North America Sales  
Director



**Lenny Hubbard**  
TC Energy

Asset Integrity Tools &  
Enablement



Empowering organizations to **orchestrate** business information  
with **seamless solutions, anytime, anywhere.**

## ABOUT S4A:

**S4A IT SOLUTIONS** – Part of the SPRO Group of companies, we are a consulting firm focussed on delivering business and technology solutions – helping clients through digital transformation by driving operational efficiency and growth.

- ✓ We have the commitment, experience, people and tools to help our clients **optimize their IT investment**
- ✓ We take pride in a culture of **open and transparent communication** - we believe this establishes a foundation of great customer service
- ✓ Headquartered in **Calgary, Alberta – Canada**
- ✓ Augmented by World-class team of **400+** IT Professionals

**SAP® Certified**  
Partner Center of Expertise



Headquartered in:

# Calgary, AB, Canada



WHAT WE DO:

# Asset Management Solutions





## EAM Mobility

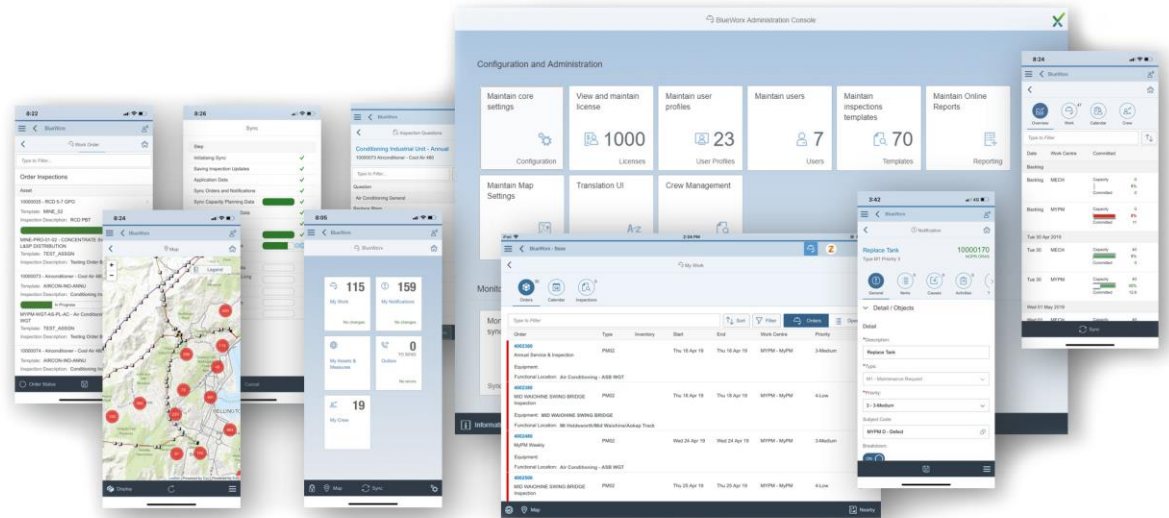
Mobilize your SAP asset management solution and get the most out of your SAP investment with BlueWorx.

BlueWorx works like you do, where you do, on all leading mobile devices and desktop browsers.

BlueWorx is entrusted by companies such as:



# BlueWorx





# Why clients love BlueWorx

- ✓ **Easy to use interface**
- ✓ **Works offline** – perfect for remote areas or buildings without connectivity
- ✓ Users can report faults, create orders, issue parts, and complete work
- ✓ Users can gather inspection data including notes, photos, geographic locations of assets, but also annotations and actions on the map as either points, lines or polygons



# TC Energy Network

## Natural gas pipelines

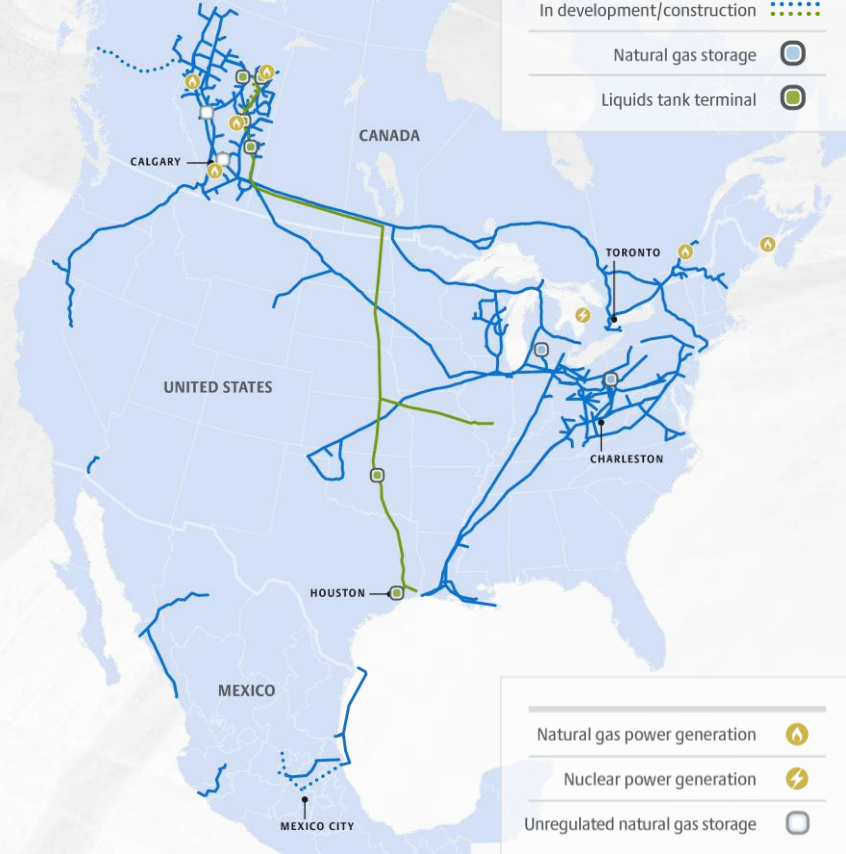
25% of the natural gas that North America uses every day.

## Oil and liquids pipelines

~20% of the western Canadian oil that goes to the U.S. Midwest and Gulf Coast.

## Power generation

Powering more than 4 million homes.



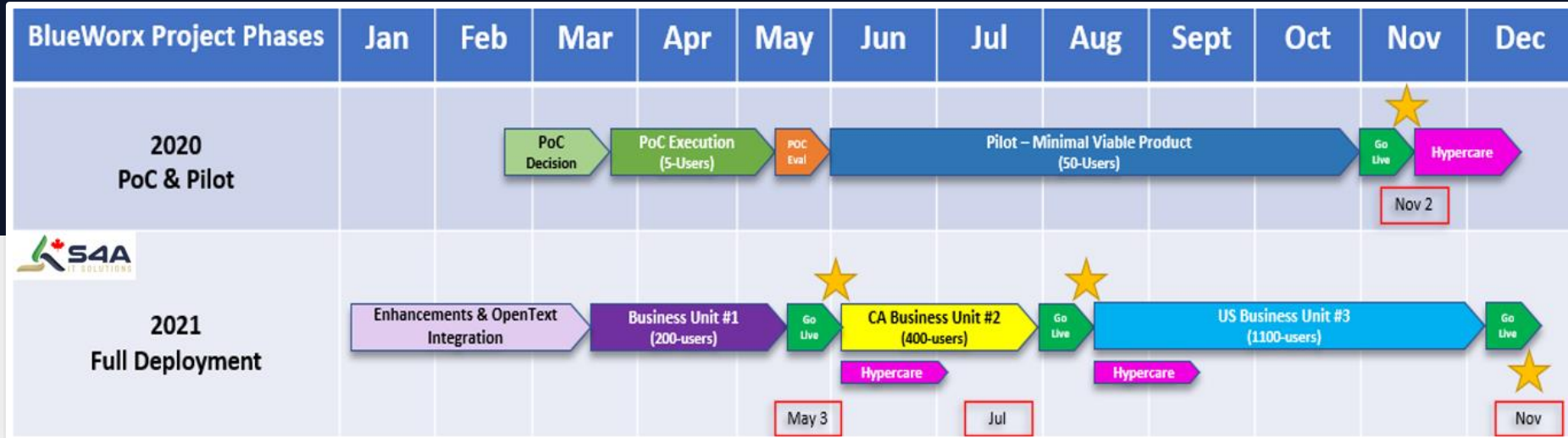
# Objectives of the TeX

(Technician Experience)

- 
- A wide-angle photograph of an industrial facility, likely a power plant or refinery, under a clear blue sky. The foreground shows a gravel lot with several tall, white, U-shaped structures. In the background, there are various industrial buildings, including a large grey one on the right with a yellow staircase, and other smaller structures. The overall scene is bright and clear.
- ✓ Deliver a stronger field worker mobile experience; minimize admin time and increase wrench time
  - ✓ Eliminate manual inspection processes
  - ✓ Reduce paper consumption
  - ✓ Simplify and reduce cost of mobile infrastructure
  - ✓ Improve synchronization time
  - ✓ Drive improved/accurate data collection at point of discovery
  - ✓ Exploit the technology platform to solve further manual process problems
  - ✓ Develop a trusted vendor partnership; one who can provide ongoing EAM thought leadership, enabling optimization for future EAM projects



# Phased Deployment



- ✓ 1900 Technicians (FY2021), ramped up to 2120 technicians (FY2022)
- ✓ 70+ Customizations delivered in MVP phase (5-mths)

- ✓ 3 Geographically dispersed Business Units (Canada, US & Mexico)
- ✓ Project 100% delivered remotely during the pandemic

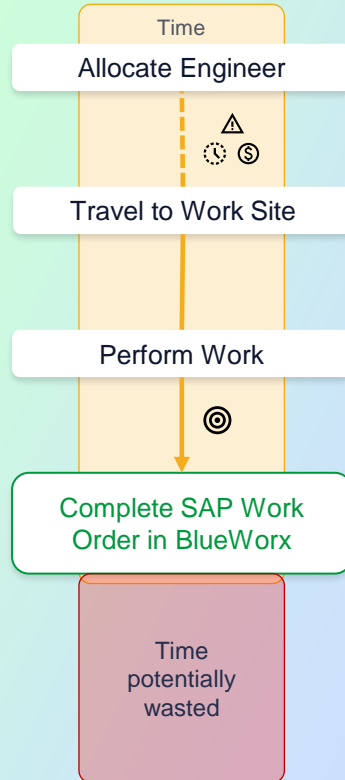
# Mobilizing your technicians, **the right way.**

## Key Achievements:

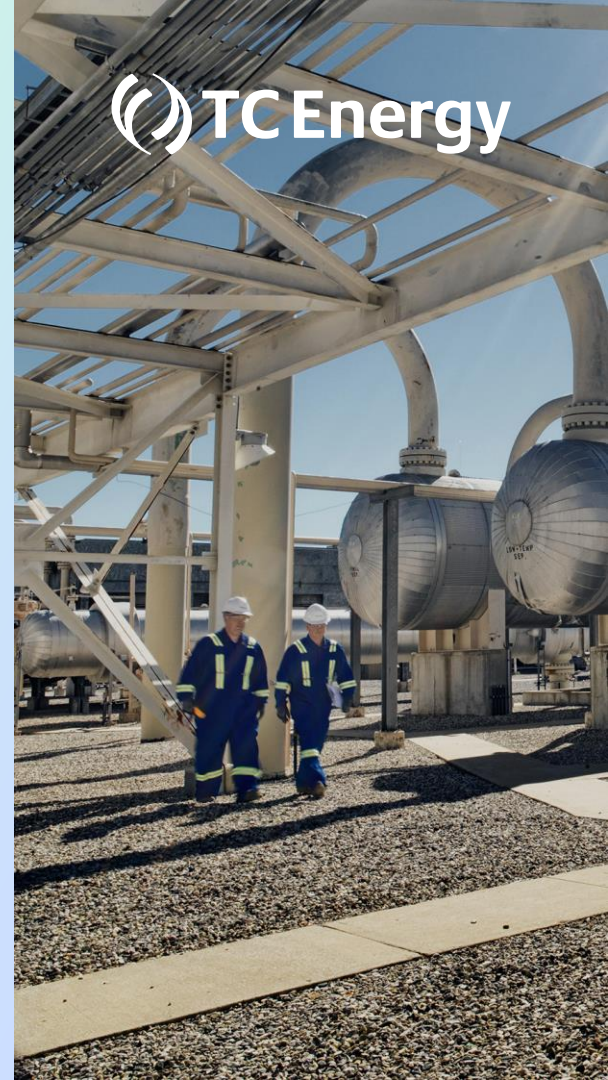
- ✓ Significantly improved sync times – 30-40% faster
- ✓ Multiple form factors (iOS app, Win 10 App, Browser)
- ✓ Increased visibility for sync troubleshooting
- ✓ Improvement in user experience = increased wrench time for field workers
- ✓ Deployment of technology that truly supports their work processes
- ✓ Seamless UX with one single point of entry
- ✓ Dramatic positive CULTURAL shift
- ✓ Multi-language feature utilized with Inspections for the Mexico Business Unit
- ✓ Positive accelerated shift to business processes especially towards enhanced data driven decision making (Reliability & Integrity)
- ✓ Neptune platform allowed us to tackle many more opportunities to turn manual business processes into apps to streamline, automate and gain efficiencies

BlueWorx

FUTURE WORKFLOW



TC Energy



# Mobilizing your technicians, **the right way.**

## Additional Benefits:

- 1) Positive accelerated shift to business processes especially towards enhanced data driven decision making
- 2) **Multi-language feature** utilized with Inspections for the Mexico Business Unit
- 3) Dramatic positive **CULTURAL** shift
- 4) **Fully Engaged** & Collaborative team



Sometimes it's about people on the projects more than the methodology :)

*"if you are working on something exciting that you really care about, you don't have to be pushed. **The vision pulls you.**"*

– Steve Jobs

# Key Takeaways.



BlueWorx helped streamline our equipment inspection process.



Customization development & deployment was significantly reduced.



BlueWorx functionality on both the setup and usage in the field is far superior.



Having all end user groups fully involved and engaged from the start.

# Q&A



**Alvin Szott**

North America  
Sales Director

[alvin.szott@s4ait.com](mailto:alvin.szott@s4ait.com)

**Get Started Today!**

If you're interested or have questions about any of our products or services, reach out to our friendly sales team.



[www.s4ait.com](http://www.s4ait.com) • [info@s4ait.com](mailto:info@s4ait.com)

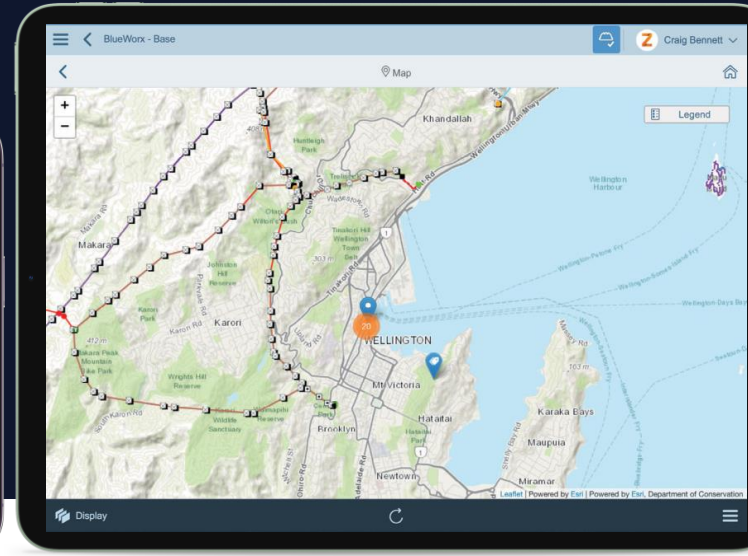
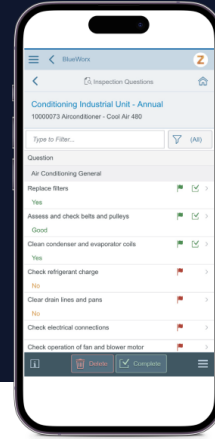




EAM  
Mobility

BlueWorx

# Core functionality



- ✓ Work and service orders
- ✓ Notifications
- ✓ Comprehensive asset inspections
- ✓ Functional location details
- ✓ Equipment details
- ✓ Material balances, issues, reservations & exchanges
- ✓ Measurement reading list
- ✓ **Key Feature:** Comprehensive configurable fully SAP integrated Inspections
- ✓ Measurement points
- ✓ Measurement documents
- ✓ Bill of materials
- ✓ Documents & permits
- ✓ Locate assets, asset annotations and work actions spatially
- ✓ Optional google map and ESRI map integration

## 3 Easy Steps

1

**SAP® ERP system**  
(ECC 6+ or S/4 HANA)

2

**Neptune Software's  
SAP Certified Add-on**

3

**BlueWorx installation in  
your SAP ERP system\***

**BlueWorx works with the following mobile devices & browsers:**



iOS Tablets &  
Phones 10+



Android Tablets &  
Phones 6.0+



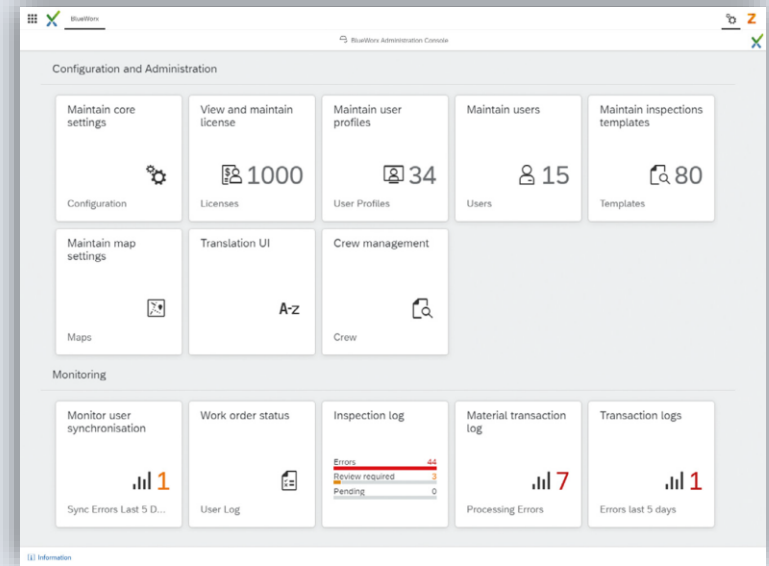
Windows  
10 to 11



HTML5 Compliant  
Browsers\*\*

\*SAP Gateway system or SAP Mobile Platform can optionally be used in the deployment architecture as required.

\*\*online connection required.



The underlying technology used by BlueWorx is SAP ABAP for the backend logic, JavaScript for the frontend logic and SAPUI5 (Fiori) for the look and feel.

All from a single code base controlled from within your SAP ERP system and managed using the familiar SAP Transports you trust.