



# Digital Transformation with S/4 HANA

Technology & Architecture POV  
Deloitte

Oct. 20, 2022



# Presenters



## **Aditya Sharma**

Technology Lead : SAP Development

Firm: Deloitte Canada (Calgary)

Experience: 14 Years

Focus Areas: SAP & Cloud

Transformation, Technology Strategy,  
Innovation and Development

Email: [adityaxsharma@deloitte.ca](mailto:adityaxsharma@deloitte.ca)



## **Kushal Anand**

Technology Lead : SAP Architecture

Firm: Deloitte Canada (Calgary)

Experience: 13 Years

Focus Areas : SAP & Cloud

Transformation, Technical Architecture

Email: [kusanand@deloitte.ca](mailto:kusanand@deloitte.ca)

## Digital Transformation with S/4 HANA

This session primarily focuses on Deloitte's view of Digital transformation of your Enterprise's IT landscape and aligning with the Goal of implementing a Clean & Intelligent ERP Solution

## Topics:

1. Deloitte Introduction
2. S/4 HANA migration reasons
3. Cloud & S/4 HANA decision journey
4. Becoming a Clean & Intelligent Enterprise
5. Choosing your Hyperscaler
6. Lessons learnt

# Introduction

## Deloitte



# Deloitte is the #1 SAP S/4HANA Practice in the World



# S/4 HANA Migration Reasons

Common reasons to migrate to S/4

# S/4 HANA Migration Reasons

Common reasons to migrate to S/4

**Reason #1**

The End-of-life Deadline

1. Deadline is years away
2. Undercutting the value of transformation
3. Large investment decisions shouldn't be taken out of fear

# S/4 HANA Migration Reasons

Common reasons to migrate to S/4

## **Reason #1**

### The End-of-life Deadline

1. Deadline is years away
2. Undercutting the value of transformation
3. Large investment decisions shouldn't be taken out of fear

## **Reason #2**

### Latest & Greatest features

1. A new feature shouldn't drive the need for migration, as the gains might be incremental
2. Doesn't justify the disruption that S/4 HANA brings
3. Dissatisfied C-Suite executives and end users



# S/4 HANA Migration Reasons

## Common reasons to migrate to S/4

### Reason #1

#### The End-of-life Deadline

1. Deadline is years away
2. Undercutting the value of transformation
3. Large investment decisions shouldn't be taken out of fear

### Reason #2

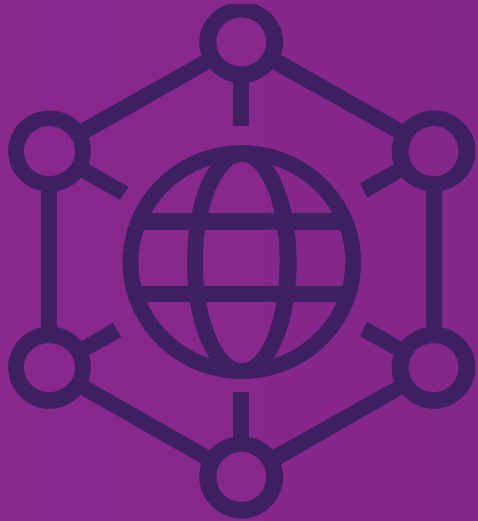
#### Latest & Greatest features

1. A new feature shouldn't drive the need for migration, as the gains might be incremental
2. Doesn't justify the disruption that S/4 HANA brings
3. Dissatisfied C-Suite executives and end users

## The RIGHT reason to migrate to S/4

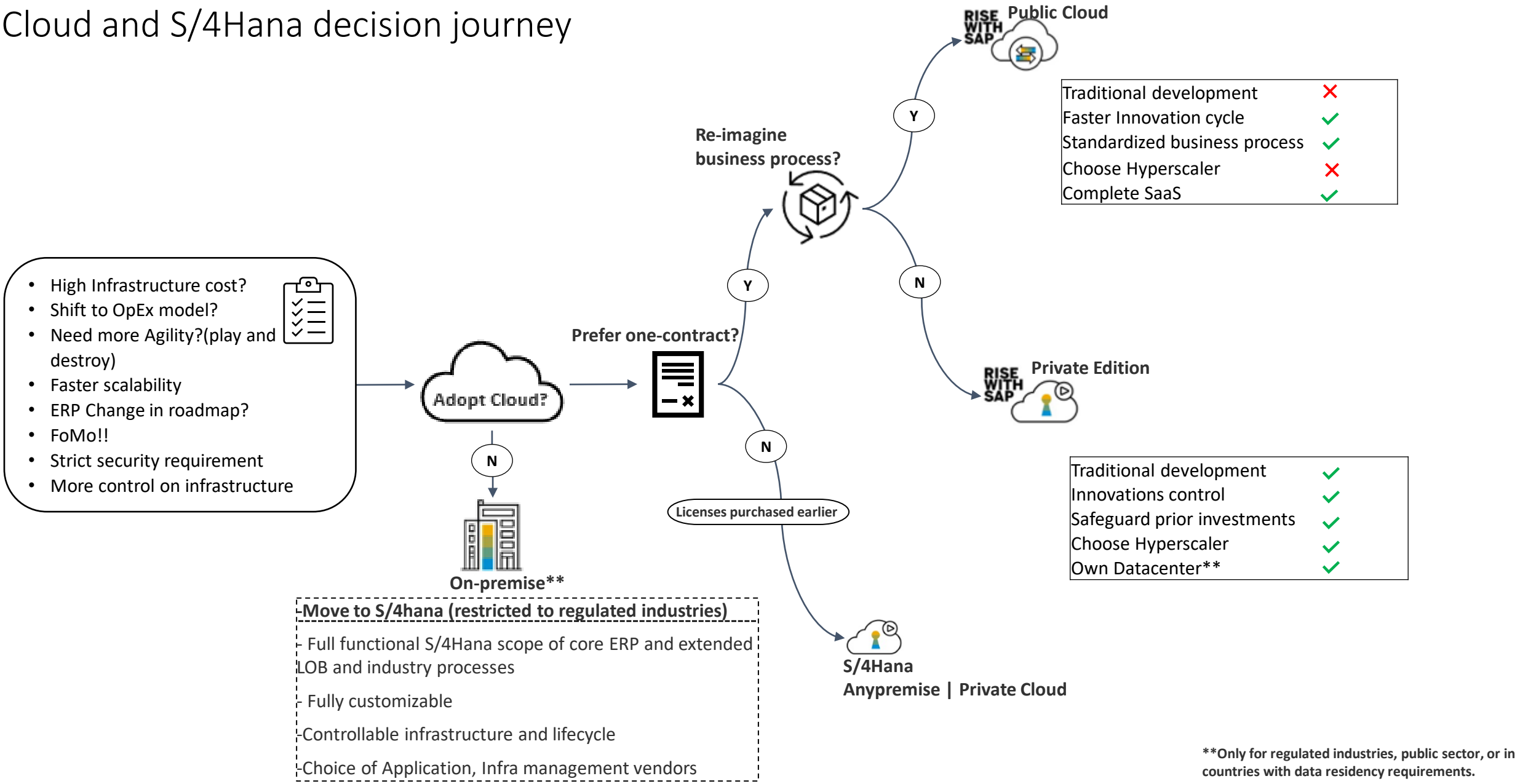
### DIGITAL TRANSFORMATION

- ✓ S/4 HANA is an integral part of your overall digital transformation strategy
- ✓ Stay ahead of the competitors and go beyond your user expectations
- ✓ Leave the baggage of data cleanse due to acquisitions or divesting business units by purging/organizing unused siloed and outdated data
- ✓ The real value of S/4 Transformation comes with:
  - Merging systems
  - Cleaning data and Coalescing all trusted data into a single structure
  - Migrating historical data
  - Simplifying the way business is done
- ✓ S/4 migration should not just be a technical upgrade but should be a business transformation which is supposed to change the way your teams operate and do their day-to-day jobs
- ✓ Have a Technology Goal and Vision



## Cloud and S/4Hana decision journey

# Cloud and S/4Hana decision journey



\*\*Only for regulated industries, public sector, or in countries with data residency requirements.

# Deployment Options

## Parameters

**Clean-ERP**

**Business Process  
Enhancement**

**Data Migration**

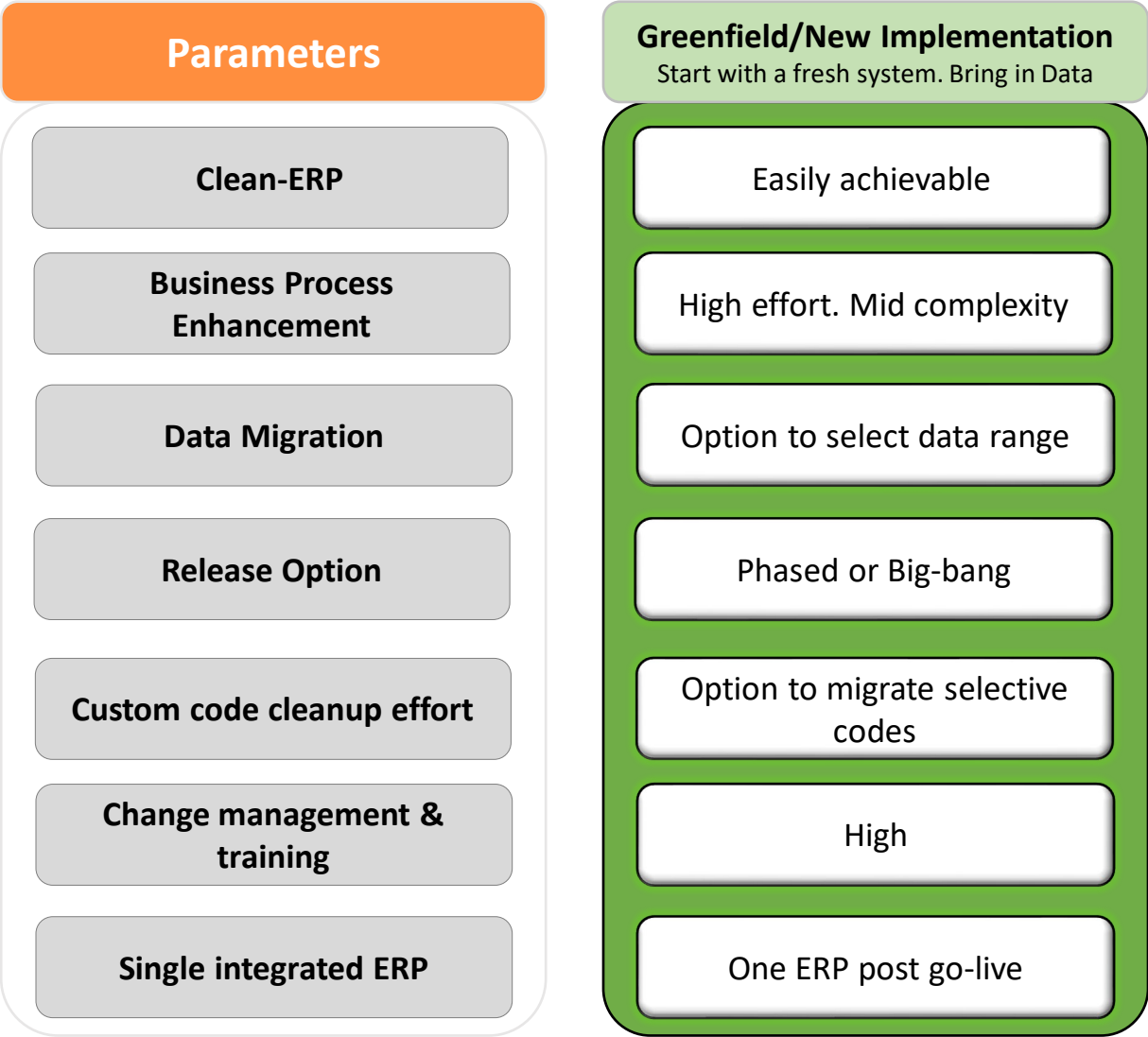
**Release Option**

**Custom code cleanup effort**

**Change management &  
training**

**Single integrated ERP**

# Deployment Options



# Deployment Options

## Parameters

- Clean-ERP
- Business Process Enhancement
- Data Migration
- Release Option
- Custom code cleanup effort
- Change management & training
- Single integrated ERP

**Brownfield/System conversion**  
Technical system conversion to S/4Hana

- Extensive cleanup effort
- High effort and complexity
- All data is migrated.
- Big-bang
- High. All compatible code is retained
- Low
- One ERP post go-live

# Deployment Options

Parameters

Clean-ERP

Business Process Enhancement

Data Migration

Release Option

Custom code cleanup effort

Change management & training

Single integrated ERP

Greenfield	Bluefield/Selective transformation
Easily achievable	Transform to new system, migrate selective data
	Modifications do exist. Better than Brownfield
High effort. Mid complexity	High effort. Mid complexity
Option to archive historical data	Option to select data range
Phased or Big-bang	Phased or Big-bang
Option to migrate selected codes	Compatible custom code retained, clean up possible
High	High
One ERP post go-live	Might have both ECC and S/4 running at the same time

# Deployment Options

Parameters	Greenfield/New Implementation Start with a fresh system. Bring in Data	Brownfield/System conversion Technical system conversion to S/4Hana	Bluefield/Selective transformation Transform to new system, migrate selective data
Clean-ERP	Easily achievable	Extensive cleanup effort	Modifications do exist. Better than Brownfield
Business Process Enhancement	High effort. Mid complexity	High effort and complexity	High effort. Mid complexity
Data Migration	Option to select data range	All data is migrated.	Option to select data range
Release Option	Phased or Big-bang	Big-bang	Phased or Big-bang
Custom code cleanup effort	Option to migrate selective codes	High. All compatible code is retained	Compatible custom code retained, clean up possible
Change management & training	High	Low	High
Single integrated ERP	One ERP post go-live	One ERP post go-live	Might have both ECC and S/4 running at the same time





## Clean ERP

# Clean & Intelligent Enterprise

Clean Core | Clean ERP | Clean Portfolio

**ECC**

**Heavily Customized**

**Siloed Integration**

**Longer Upgrade Cycles**

**Cluttered Development**

**Obsolete Technologies**

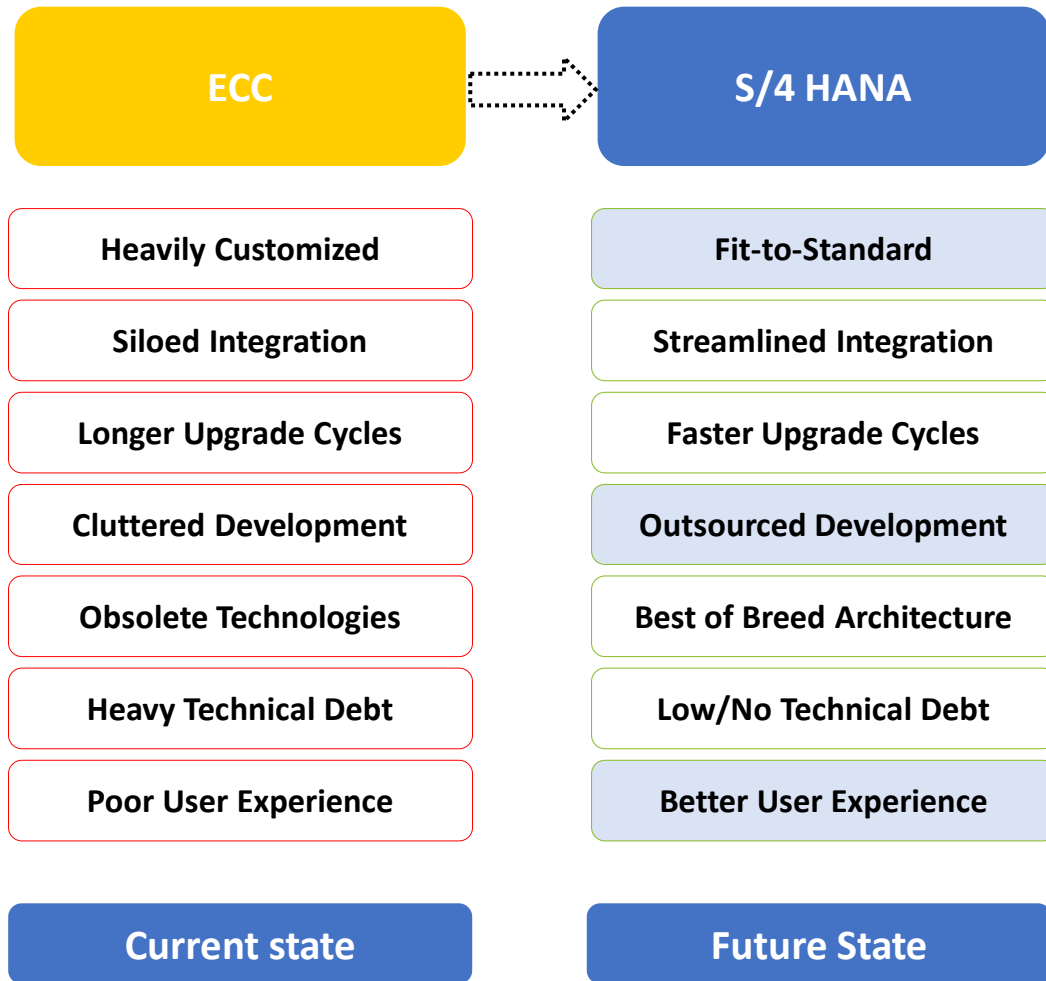
**Heavy Technical Debt**

**Poor User Experience**

**Current state**

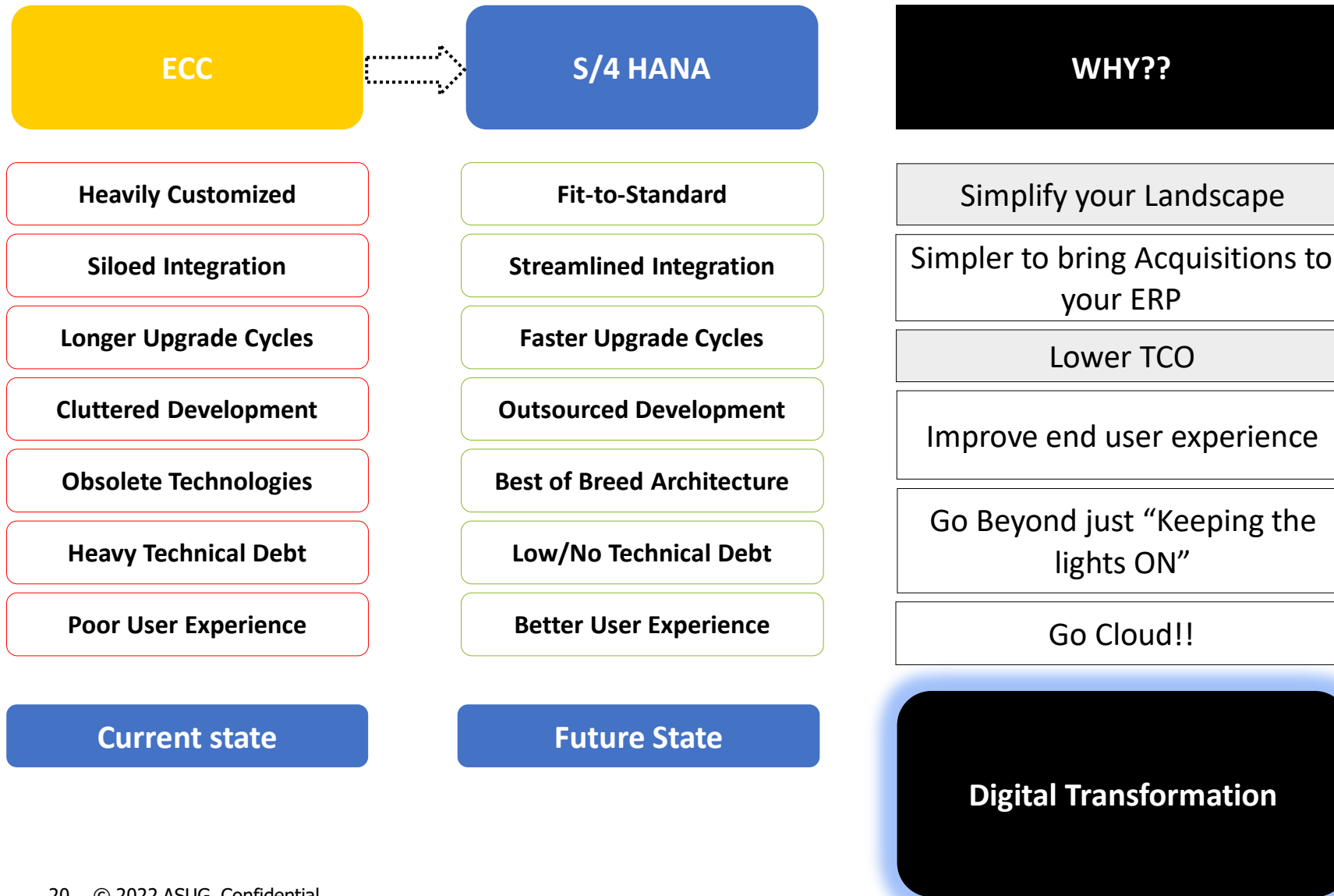
# Clean & Intelligent Enterprise

Clean Core | Clean ERP | Clean Portfolio



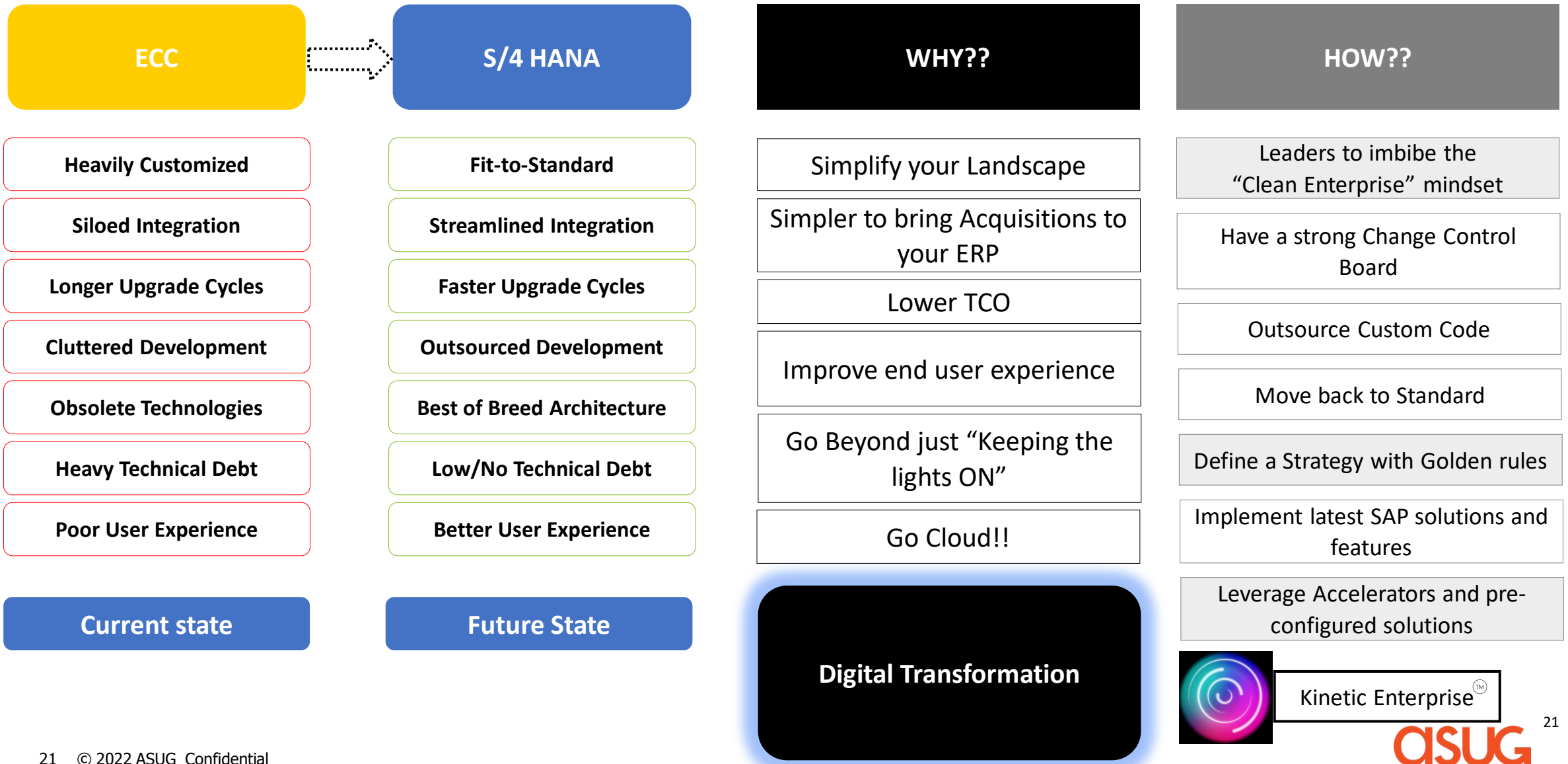
# Clean & Intelligent Enterprise

Clean Core | Clean ERP | Clean Portfolio

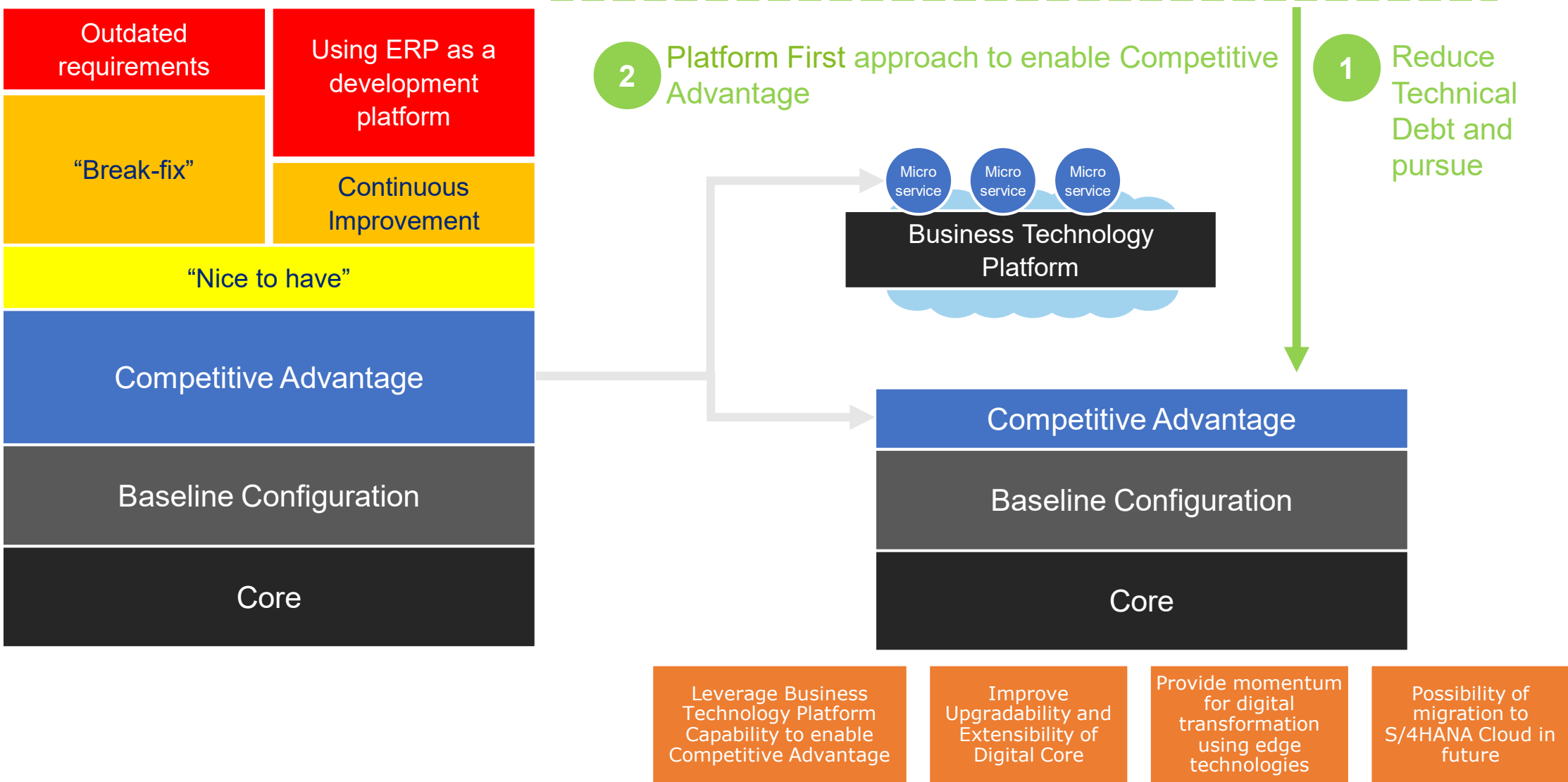


# Clean & Intelligent Enterprise

Clean Core | Clean ERP | Clean Portfolio



# “Clean ERP” is the path to the Intelligent Enterprise

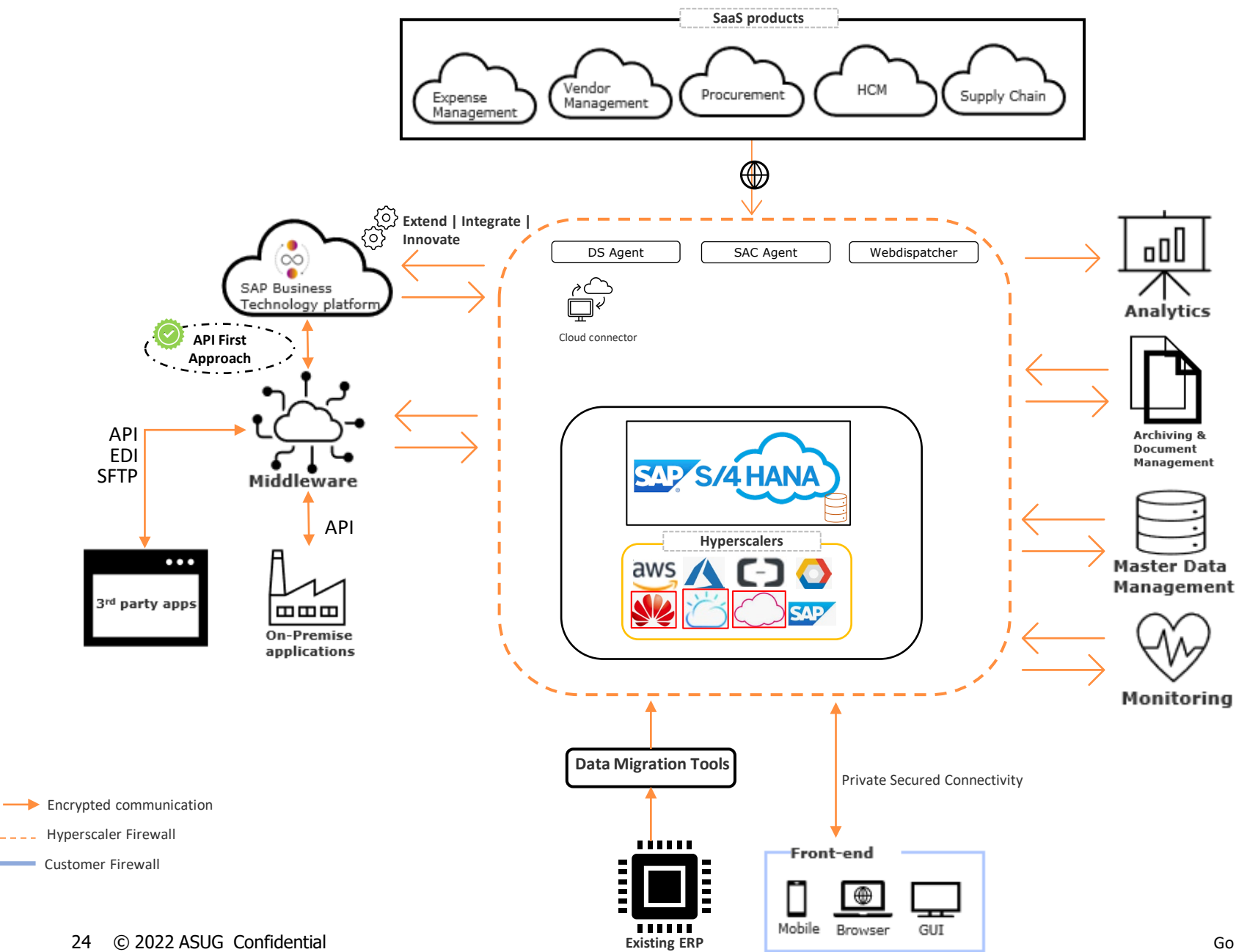




## Clean Architecture

Simplicity is the key to success

# Architecture digitization



## Our experience

- Perform due diligence on Operational optimization, Security, Reliability, Cost optimization, Sustainability
- Carefully choose the location of the Data Migration (ETL) tool
- Understand the limitations of integrating with SaaS, On-Prem and 3<sup>rd</sup> party apps before onboarding them
- Certification and Compatibility of 3<sup>rd</sup> party solutions to integrate with S/4 HANA needs early planning
- Understanding the future need of data for analytical reporting and Data lake design to be incorporated early in architecture
- Early Archival & document management road map
- Central Error monitoring solutions to be incorporated early as part of the strategy
- Fully leverage the capability of your selected Hyperscaler



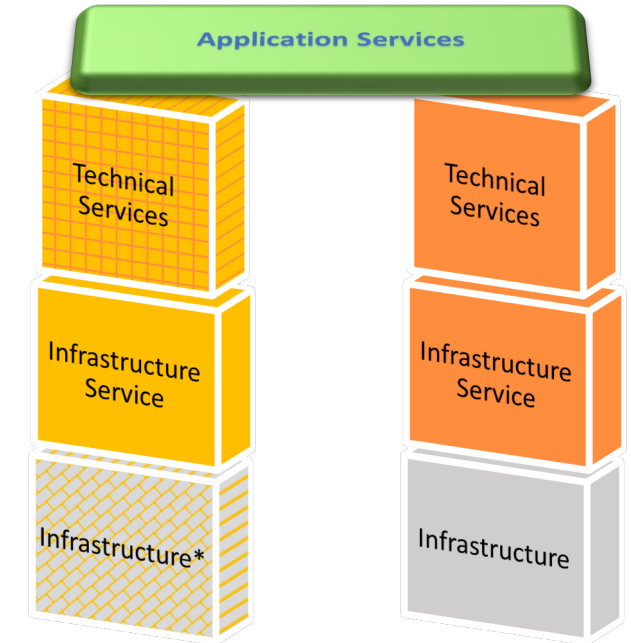
# Choosing Hyperscalers for your Cloud Transformation

Selecting a Hyperscaler comes with long-term implications, including data migration services, business IT operations that directly impacts return on investments.

As a result, transformation journeys should carefully evaluate the Hyperscalers when moving to S/4Hana.

## Few points to consider:

- Regionality/Availability Zones
- Performance
- Security
- Footprint of Hyperscaler in your current state enterprise IT landscape
- Ease of transfer of on-prem solutions to cloud equivalents
- Roadmap on leveraging other services of the Hyperscaler



■ SAP (RISE) ■ Partner ■ Hyperscaler ■ Customer, Partner, SAP

\*Hyperscaler also available

Hyperscaler Operating Models

# Deloitte S/4 HANA Transformation Lessons learnt

## Strategy

- Define UX strategy: business roles and personas well in advance
- Carefully evaluate decisions deviating from defined integration strategy
- Data lake should be an integral part of the Data Analytics and Innovation strategy and need to be considered early in the program

## Development

- For newer solutions/add-ons/Services, make sure to perform feasibility analysis including a POC to ensure the service or add-on is right fit for the business
- Make sure to have an additional buffer in the timeline for the newer services introduced by BTP as there may be initial hiccups to use that service including usage, training, connectivity, integration, security and development
- Understand the functionality and limitation of S/4 HANA Extensibility solutions before implementing them
- SAP Artifacts for On-premise and cloud systems are limited or specific to that model only and make sure to validate them before baking them in the design
- Multiple features/solutions are as part of Future roadmaps of SAP which makes the customer use Classical approach due to implementation timelines
- Deviations need to be documented accurately and need to be discussed with SAP to review future roadmaps

# Questions?

**Thank you.**