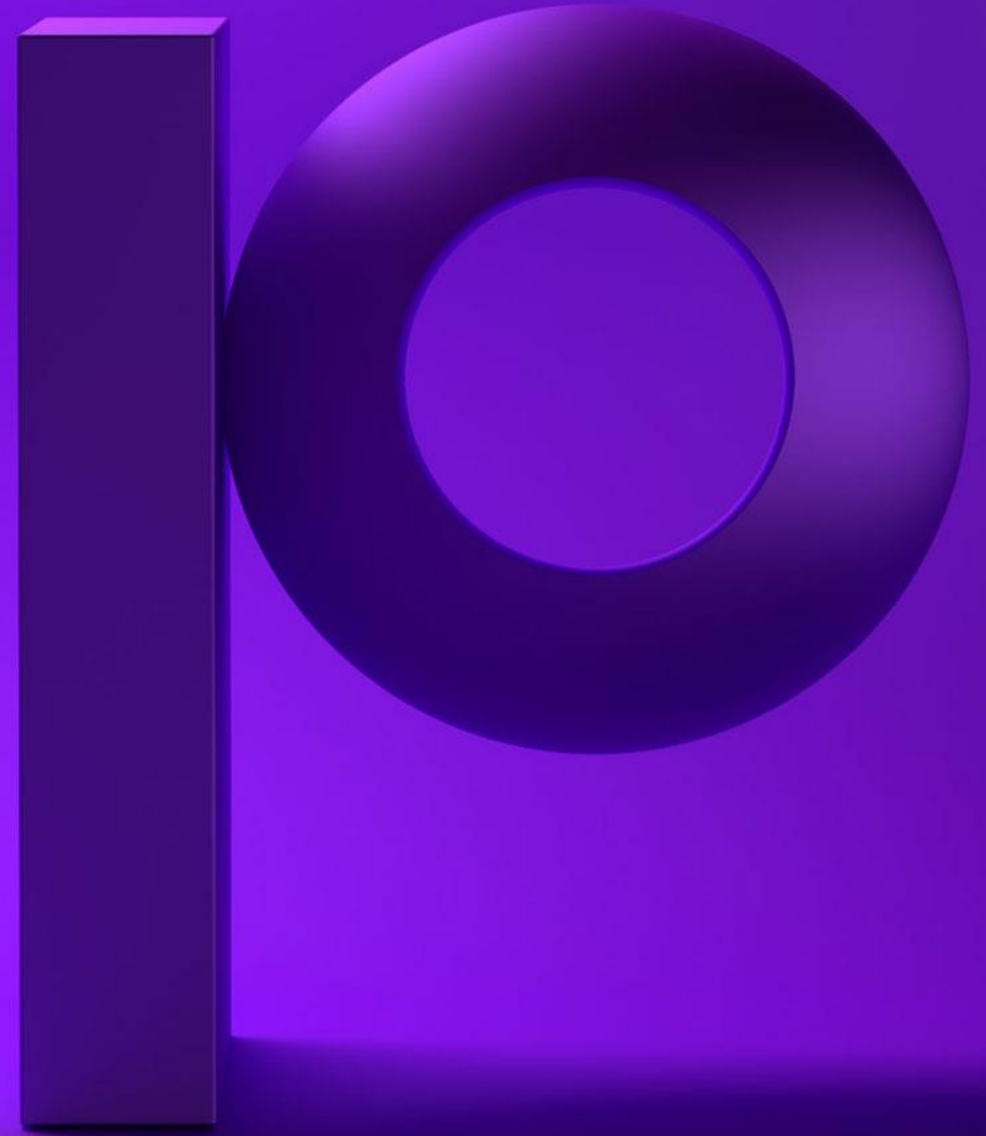


precisely

Change the way you  
work with SAP through  
automation



Winshuttle is now  
part of Precisely,  
the leader in data  
integrity

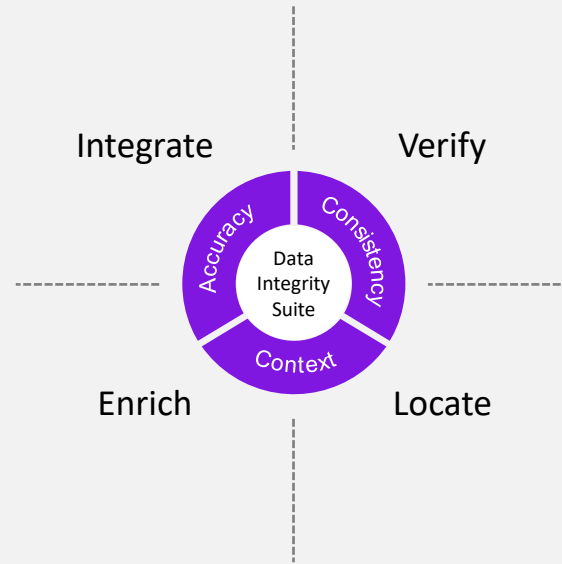
The logo for Precisely features the word "precisely" in a white, lowercase, sans-serif font. The letter "i" has a white dot. The letter "o" is a large, 3D-rendered ring with a dark purple-to-black gradient and a white highlight on its top edge. The letter "p" is a tall, dark purple 3D bar with a white highlight on its left edge. The letters "r", "e", "c", "i", "s", "e", and "l", "y" are in the same white font as the "p". The entire logo is set against a dark purple background with a subtle gradient and a soft shadow beneath the 3D elements.

precisely



## The global leader in data integrity software

Our data integrity software, data enrichment products, and strategic services deliver accuracy, consistency, and context to power confident business decisions.



### Brands you trust, trust us



### Data leaders partner with us



# 12,000

customers

Customers in more than  
**100** countries

# 99

of the Fortune 100

# 2,300

employees

The background features several abstract 3D-rendered geometric shapes in various shades of purple and blue. These include a large horizontal rectangle at the top left, a sphere to its right, a vertical rectangle on the right side, a sphere below the top-left rectangle, a sphere to the left of the vertical rectangle, and a square at the bottom center. The lighting creates soft shadows and highlights, giving the shapes a three-dimensional appearance.

Empowering business teams  
to make an impact

# Explosion of data

Data is the fuel for decision-making today



\$1.3 trillion spent  
on digital transformation  
last year



80% of CEOs  
accelerating digital  
transformation



67% spending  
more on technology  
than people

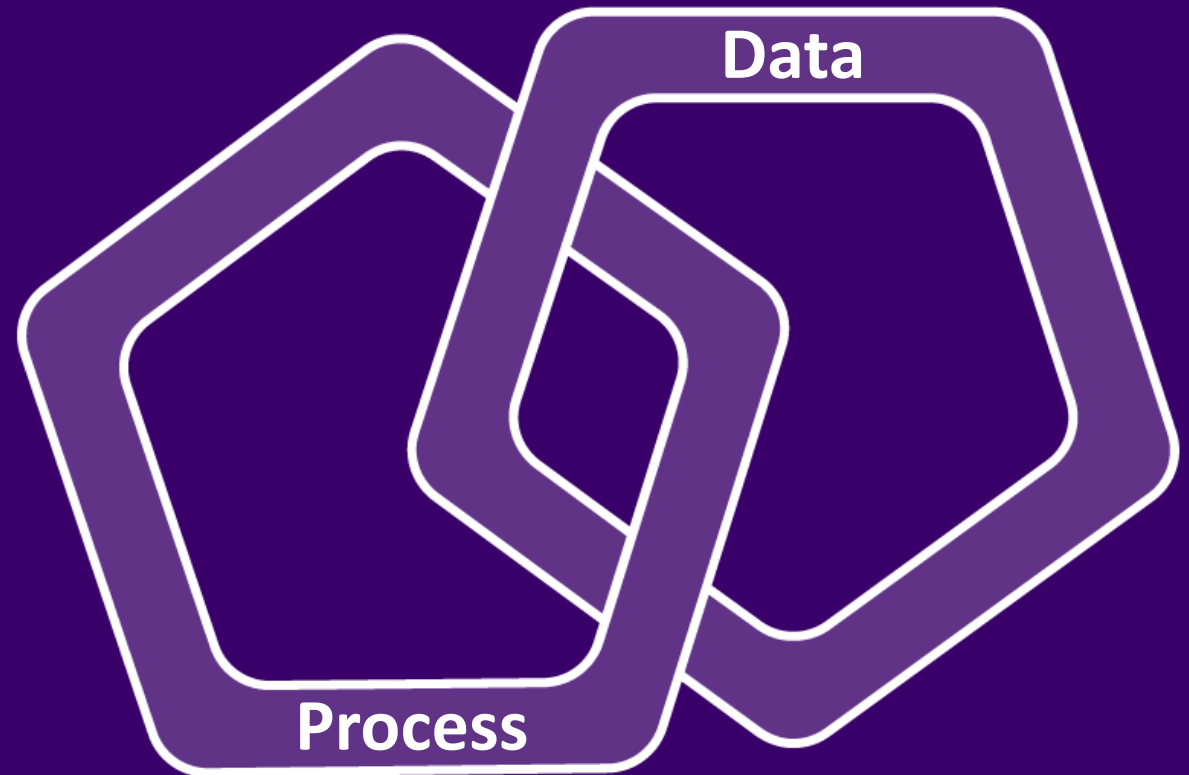


64 Zetabytes  
of data today,  
growing to 180+  
zetabytes by 2025

# Tackle process and data together

- Product launches
- Product data management
- Customer onboarding & management
- Vendor onboarding & management
- Asset management
- Financial master data

and more...



# Compete and thrive in today's dynamic world



Go faster

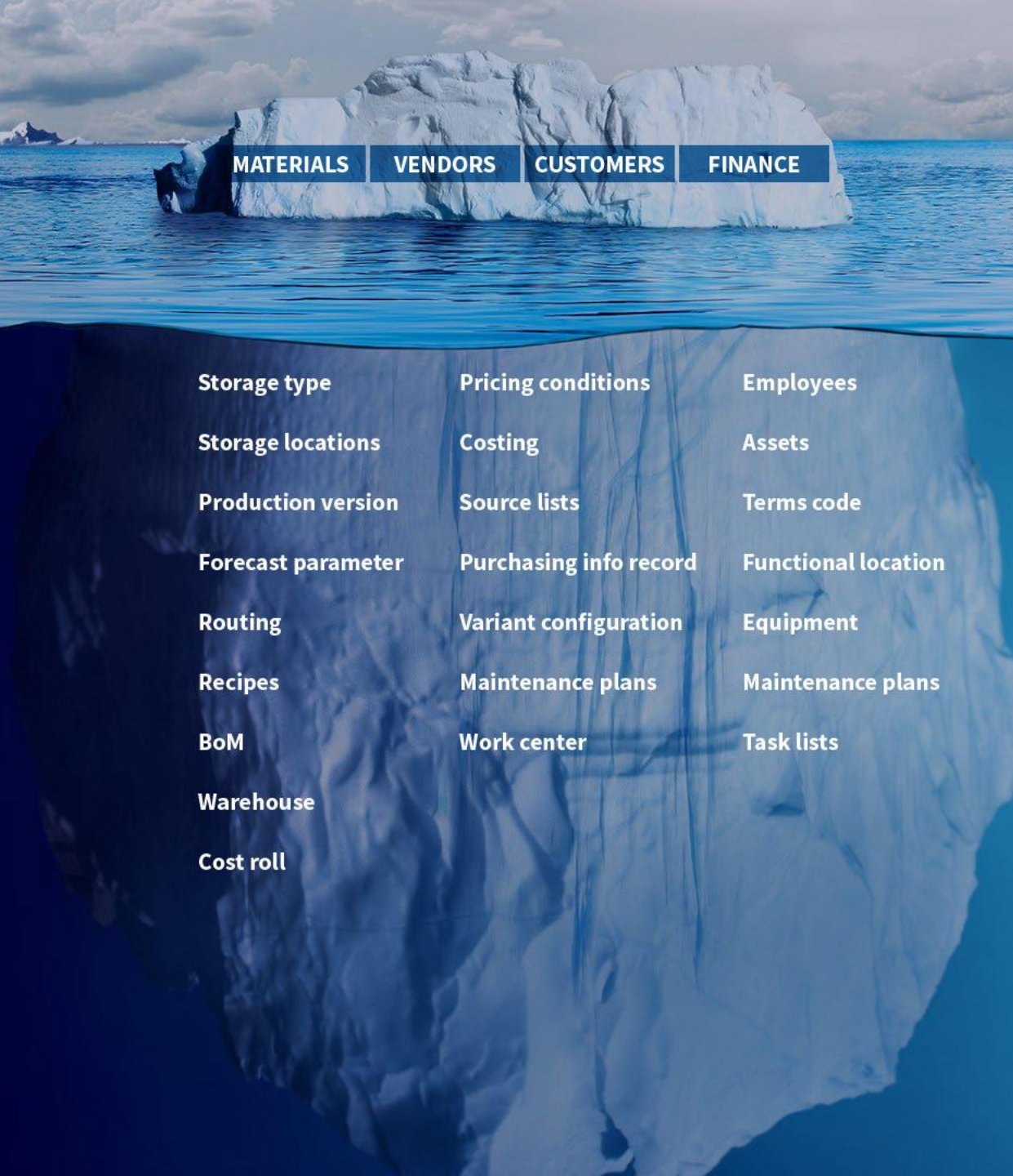


Be more agile



Improve the quality of your most important data





**MATERIALS**

**VENDORS**

**CUSTOMERS**

**FINANCE**

**Storage type**

**Pricing conditions**

**Employees**

**Storage locations**

**Costing**

**Assets**

**Production version**

**Source lists**

**Terms code**

**Forecast parameter**

**Purchasing info record**

**Functional location**

**Routing**

**Variant configuration**

**Equipment**

**Recipes**

**Maintenance plans**

**Maintenance plans**

**BoM**

**Work center**

**Task lists**

**Warehouse**

**Cost roll**

# The complexity of SAP master data



# The problems we solve



# Precisely Automate portfolio

## Automate Studio

### STANDALONE

Exchange data with SAP quickly and easily using Excel

- Data creation and maintenance
- Data migration
- Operational reporting
- Data stewardship

Business users work in Excel



## Automate Studio Manager

### GOVERNED

Share, manage, & control Precisely across the enterprise

- Basic 2-step workflow
- Centralized management
- Granular control of licenses, users & policies
- Extensive audit and ROI reporting
- Server-side job execution

Business users work in Excel



## Automate Evolve

### WORKFLOW-ENABLED

Automate and streamline SAP processes using workflows

- Advanced form and workflow capabilities
- Advanced data stewardship capabilities via web forms
- Detailed process analytics

Business users work in Excel or web forms



# A complete automation platform

## Desktop Automation

### Excel to SAP

Exchange data with SAP quickly and easily using Excel



## Process Automation

### Excel Workflow

Automate and accelerate SAP business processes through Excel file management workflows

### Form & Workflow

Automate and accelerate SAP business processes with integrated forms and workflows

# Start with desktop automation

## Desktop Automation

### Excel to SAP

Exchange data with SAP quickly and easily using Excel



## Process Automation

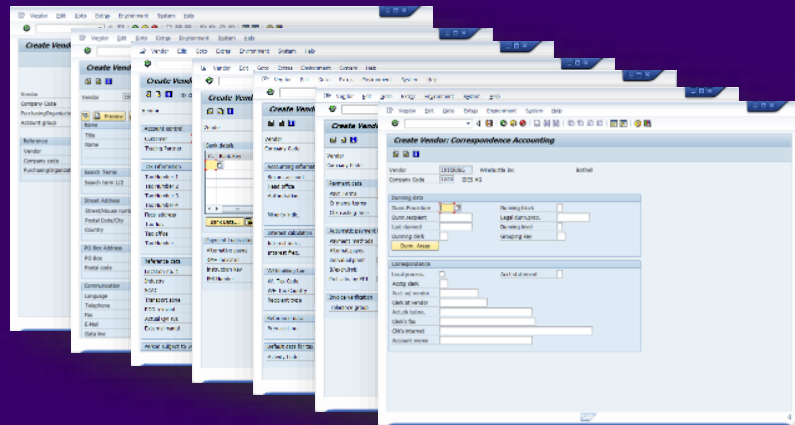
### Excel Workflow

Automate and accelerate SAP business processes through Excel file management workflows

### Form & Workflow

Automate and accelerate SAP business processes with integrated forms and workflows

# Replace multiple SAP screens with business-friendly Excel



Run completed. Successful runs: 14

No.	RUN LOG	VALIDATE LOG	*Material Number (uses external numbering)	*Industry sector	*Material Type	*Material (Sh
1	Material DEMOMATERIAL-0003 created	Success	DEMOMATERIAL-0003	F	FERT	Demo Ma
2	Material DEMOMATERIAL-0004 created	Success	DEMOMATERIAL-0004	F	FERT	Demo Ma
3	Material DEMOMATERIAL-0005 created	Success	DEMOMATERIAL-0005	F	FERT	Demo Ma
4	Material DEMOMATERIAL-0006 created	Success	DEMOMATERIAL-0006	F	FERT	Demo Ma
5	Material DEMOMATERIAL-0007 created	Success	DEMOMATERIAL-0007	F	FERT	Demo Ma
6	Material DEMOMATERIAL-0008 created	Success	DEMOMATERIAL-0008	F	FERT	Demo Ma
7	Material DEMOMATERIAL-0009 created	Success	DEMOMATERIAL-0009	F	FERT	Demo Ma
8	Material DEMOMATERIAL-0010 created	Success	DEMOMATERIAL-0010	F	FERT	Demo Ma
9	Material DEMOMATERIAL-0011 created	Success	DEMOMATERIAL-0011	F	FERT	Demo Ma
10	Material DEMOMATERIAL-0012 created	Success	DEMOMATERIAL-0012	F	FERT	Demo Ma

# Automate Studio

The right capabilities to get SAP work done faster and improve data quality.

Mass create &  
update using Excel

Data  
stewardship

Deep SAP  
integration

Low-code/no-code  
design

# What you can do with Automate Studio



Automate any SAP  
business process



Streamline data migration  
and conversions



Create operational  
reports





# Dorman speeds through master data changes



## Challenge

- Change subset of materials from 'Manufactured' to 'Kitted'
- Update BoMs and Routings
- Change sales order to reflect non-kitted materials

## Results

### PER 100 MATERIALS

	Hours	Total Cost	Difference
Manual Processes	60	\$4,500	
Using desktop automation	5	\$375	<b>\$4,125 saved</b>

NEW SINCE 1918 3,000 materials converted  
Savings = \$123,750

- Minimal business impact
- Improved data quality



# Automate Evolve

The right combination of capabilities to automate data-intensive processes.

Enterprise-grade  
workflow &  
automation

Robust data  
stewardship

Deep SAP  
integration

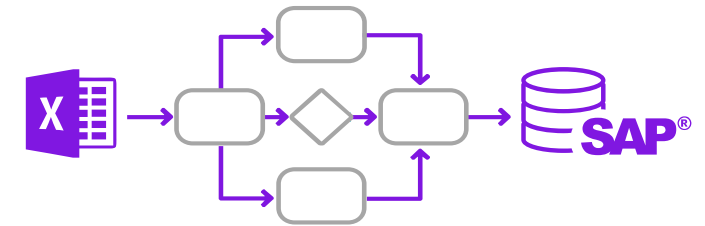
Low-code/no-code  
design

# Automate Evolve

Includes Automate Studio—our market leading Excel-to-SAP automation platform

Automate and streamline SAP business processes using workflows

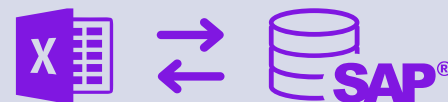
- Advanced form and workflow capabilities
- Advanced data stewardship capabilities via web forms
- Detailed process analytics



## Automate Studio

Exchange data with SAP quickly and easily using Excel

- Data creation and maintenance
- Data migration
- Operational reporting
- Data stewardship



Share, manage, & control Precisely solutions across the enterprise

- Centralized content management
- Granular control of licenses, users & policies
- Extensive audit and ROI reporting
- Server-side job execution



# Look for a complete set of capabilities



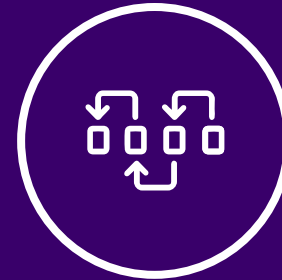
Choice of forms or  
Excel front end



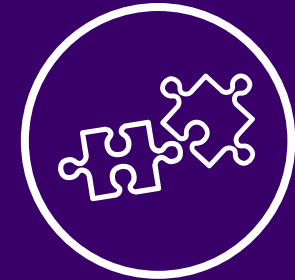
Smart, tailored, role-  
based forms



SmartTables



Dynamic process  
linking



Flexible, extensible  
solution architecture



Process dashboards  
& reports



Audit trails for  
process & data



Automated data  
exchange with SAP



Live SAP data  
validation



Granular user & policy  
management

# Make an impact

across your SAP landscape



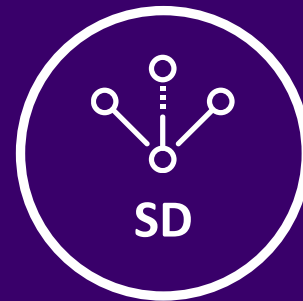
FI

Financial  
Accounting



CO

Controlling



SD

Sales and  
Distribution



MM

Materials  
Management



PM

Plant  
Maintenance



AM

Asset  
Management



PS

Project Systems



PP

Production  
Planning



QM

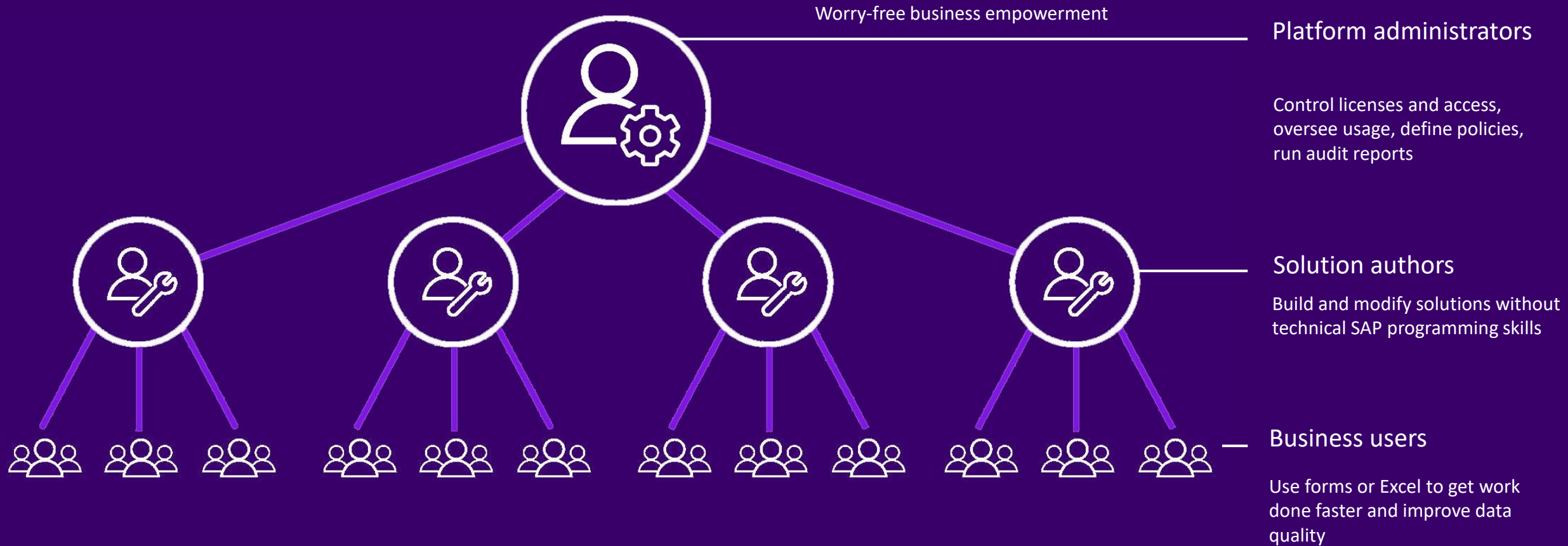
Quality  
Management



HR

Human  
Resources

# Make an impact at **scale** low-code, no-code design



Product data solutions

# Get products to market faster





The systems and processes need  
to match the speed of the market.

Sr. Product Development Manager



Speed up  
SAP launch  
processes by **50%**  
or more

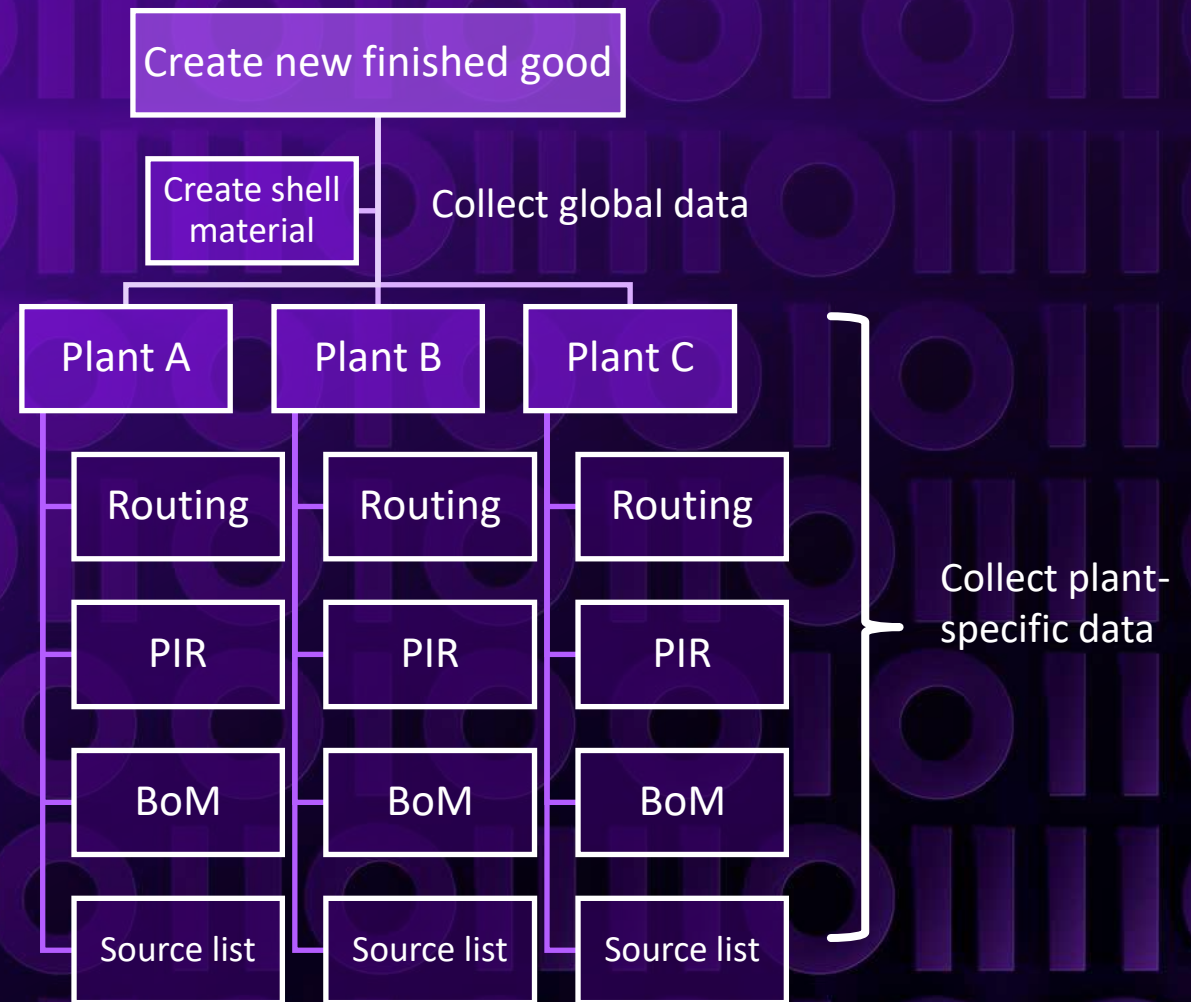
The screenshot shows the SAP New Product Launcher Project Manager View interface. At the top, there is a green header with the text "Operations" and a cursor icon. Below the header, the title "New Product Launcher" is displayed in green, with "Project Manager View" underneath. The NorthWest Holding logo is in the top right corner. The main area contains four large buttons: "New or Line Ext" (with a product icon), "Component Change" (with a flask icon), "Package Change" (with a box icon), and "Geo Expansion" (with a globe icon). Below these buttons are two dropdown menus for "Business Unit" (set to "Food") and "Region" (set to "NA"). A "Project Scope" section follows, containing several input fields and dropdown menus: "Project Name" (VEGAN ENERGY BAR), "Project ID" (NPI - 000459), "Project Manager" (Heather Oebel), "Project Type" (New Product or Line Extension), "Project Value" (empty), "Launch Date" (10/06/2019), "Brand" (Good Eats), "Business Unit" (Food), "Region" (NA), "Customer Type" (B), "Request Date" (07/08/2019), "Priority" (Standard), "Project Status" (New), and "Stage Gate" (Plan Ready). A "New Product Data" section is at the bottom.



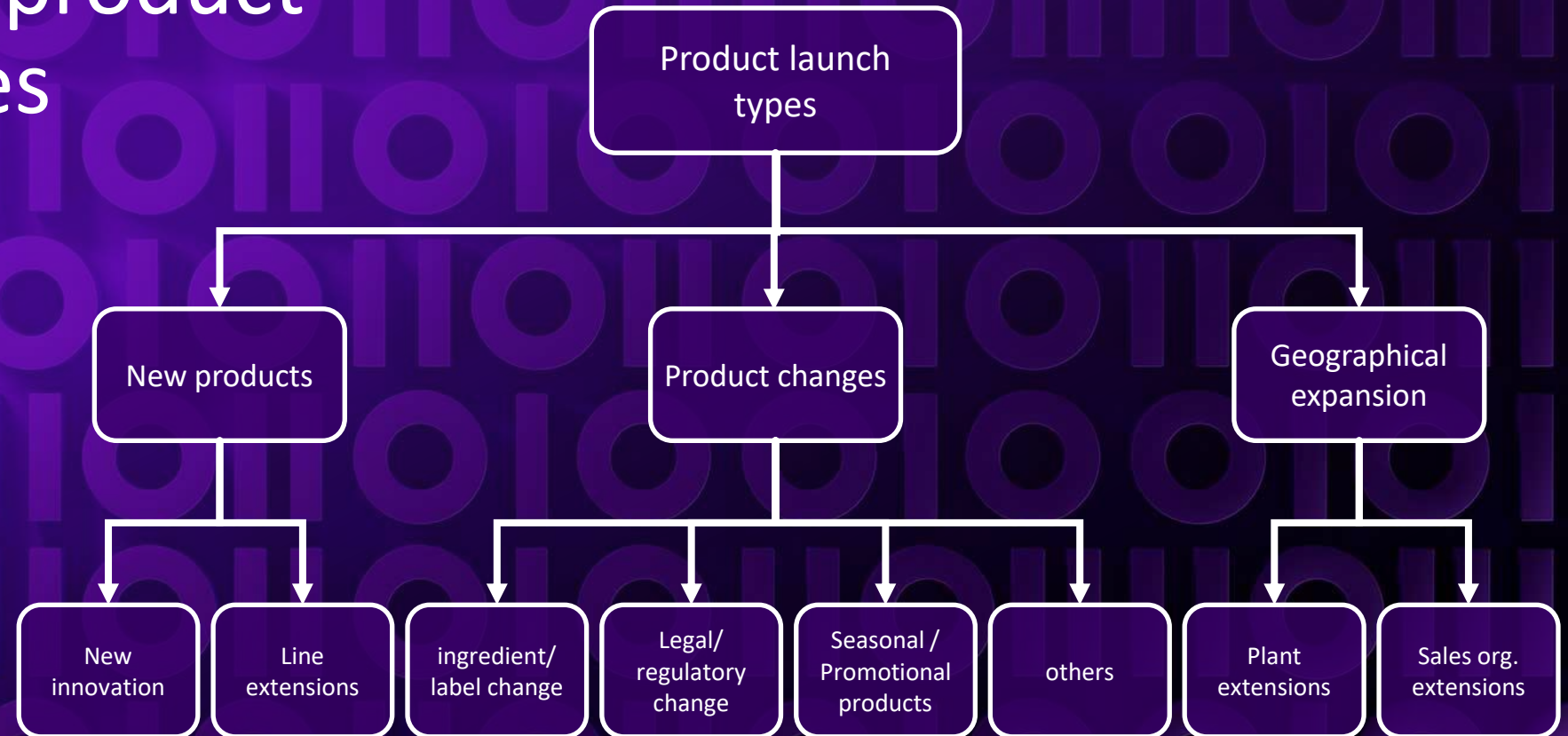
# Streamline complex processes

## Dynamic process linking

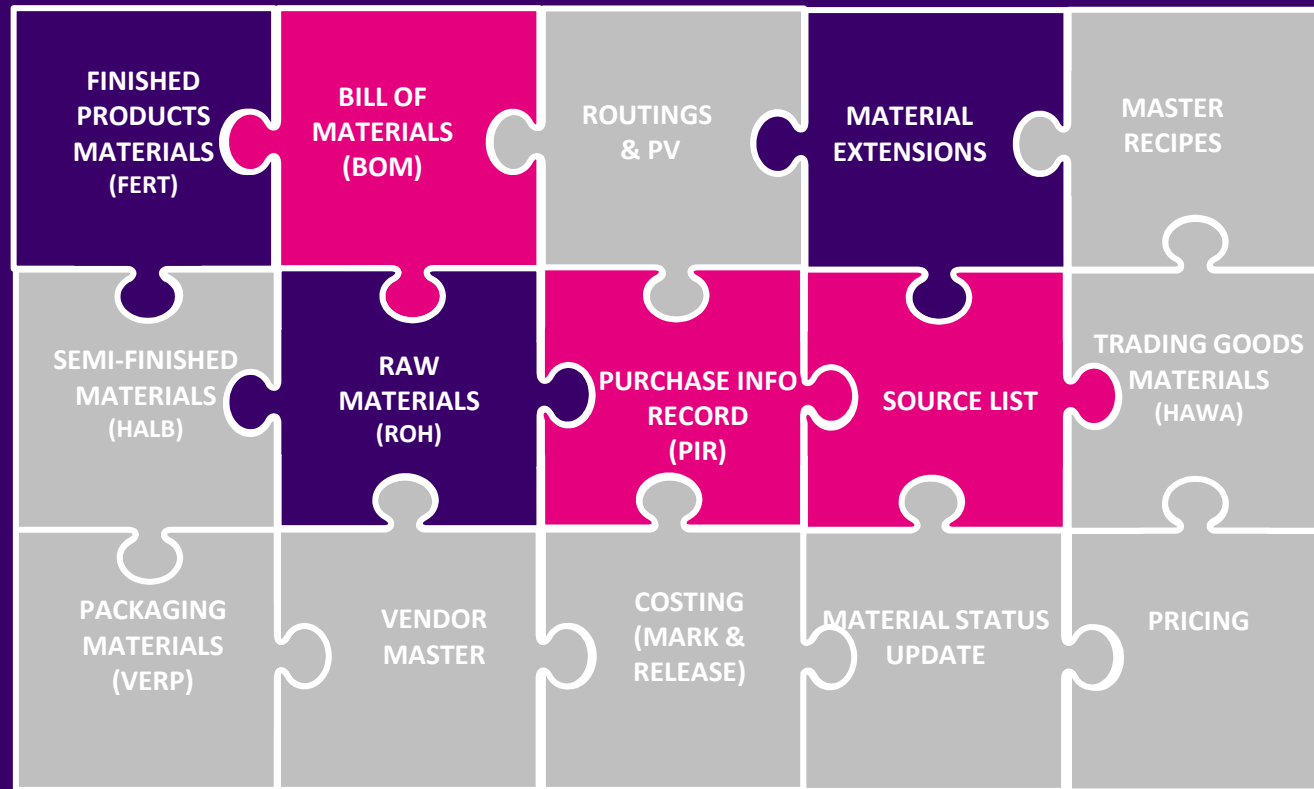
- Automate complex multi-layered processes
- Streamline data collection across data objects and business units
- Handle centralized and decentralized data in one solution



Use **one solution**  
for all your product  
launch types



# Modular, strategic product launch platform



- Start with the data objects that make sense for your business
- Expand over time
- Meet the needs of any organizational structure type
- Supports high complexity and volume





# Automate SAP processes when:

- Errors have costly consequences
- Take too long, impacting business/revenue
- Are complex with many participants
- Contain complex data & can span many objects
- With high volumes of data maintenance requests



CUSTOMER STORY:

# Energy Drink Company

## CHALLENGE

- Slow, manual processes causing product launch bottlenecks
- Lack of visibility into launch project status

## SOLUTION

- Digitized three launch processes
- Reduced product launch cycle times by 50-75%
- Increased visibility and improved governance
- Achieved repeatable, predictable processes



# What's next for SAP automation?



Integration into  
larger, complex  
processes



Incorporation of  
AI and machine  
learning



Automating Fiori  
processes



# Let's continue the conversation...



[www.winshuttle.com](http://www.winshuttle.com)

Demos

White Papers

Case Studies



Contact us

Set up a 30 minute personalized demo

[info@winshuttle.com](mailto:info@winshuttle.com)

# precisely

**Microsoft Partner**

Gold Application Development  
Gold Collaboration and Content



**SAP® Certified**  
Integration with SAP® S/4HANA

Questions!





precisely

Questions!



CASE STUDY: ENERGY DRINK COMPANY

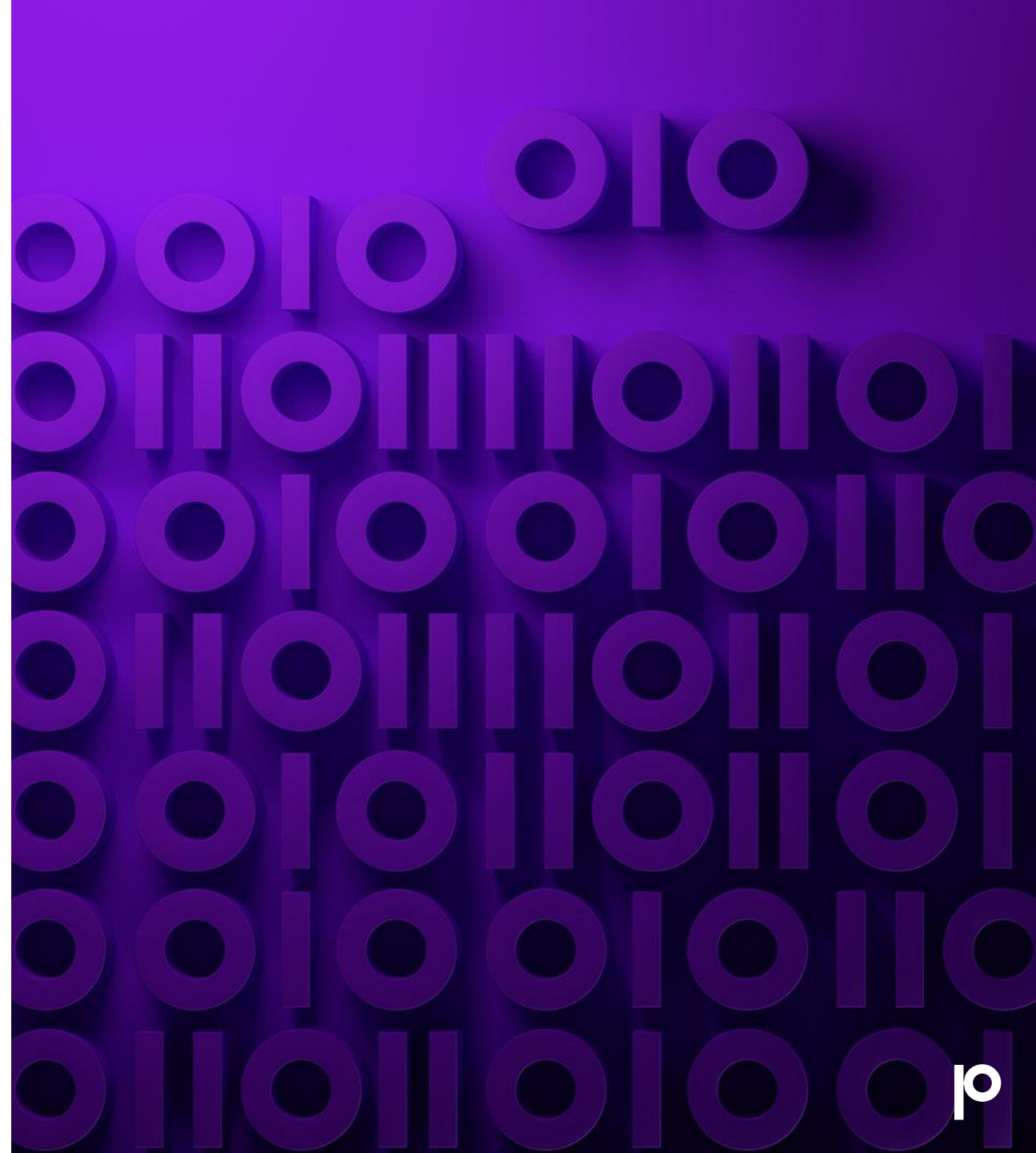
# A major transformation



“Organized chaos”

Then the global  
distribution deal  
happened....

...and their SAP launch processes became a  
bottleneck



# Projects identified



---

Point of Sale Materials



---

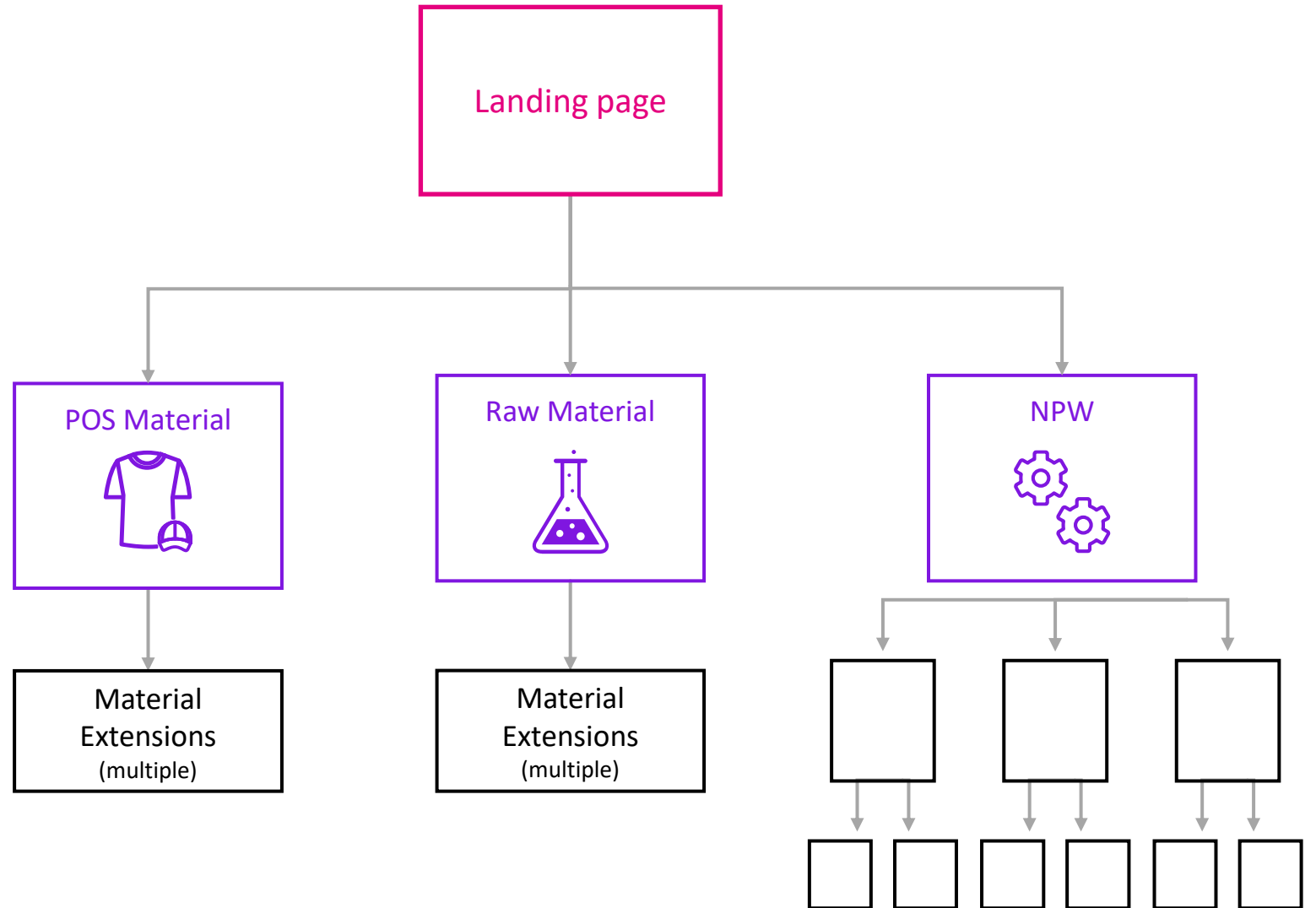
Raw Materials



---

NPI Process

# Solution highlights



Reduced cycle times by

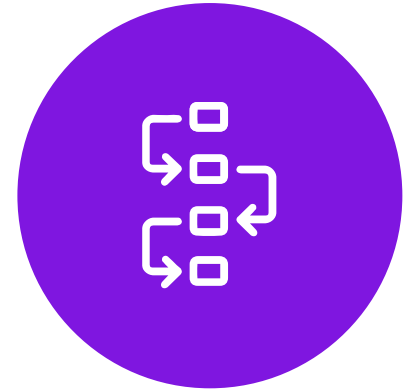
50-75%



Visibility



Governance



Repeatable



**67%** of global CEOs  
agree with this  
statement:

“Acting with agility is the  
new currency of business; if  
we are too slow, we will be  
bankrupt.”

KPMG's 2019 CEO Outlook



80%

of leaders have seen DX efforts  
accelerate during the pandemic



67%

are likely to invest more in technology  
than they are in people.