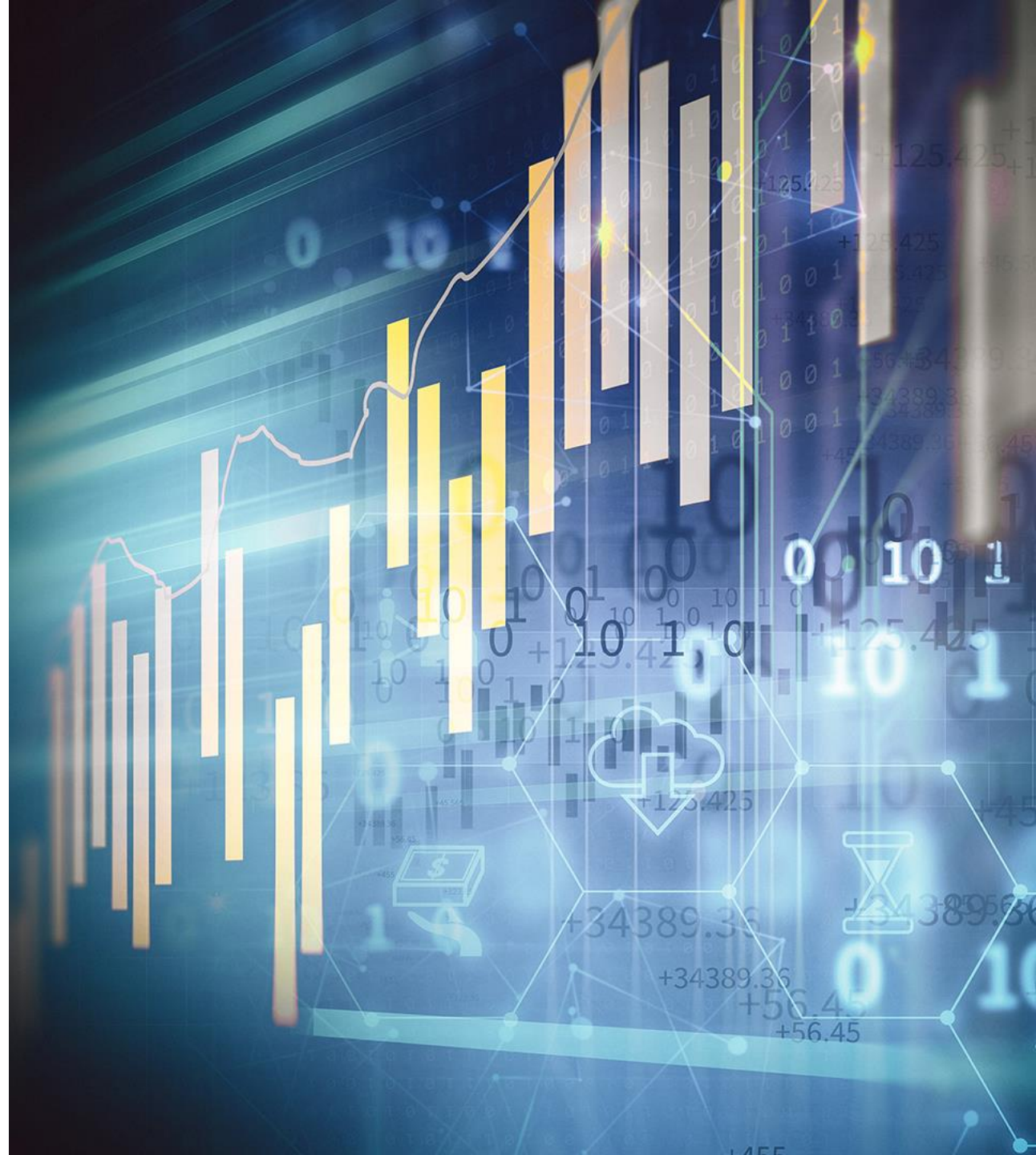


# BEYOND THE “STANDARD” DATA REPLICATION SCENARIOS - INTEGRATE SAP DATA IN NEAR REAL TIME

Data Management



# Meet Your Presenter



Joe Bartoletti  
Senior Account Executive

 [Joe.Bartoletti@snpgroup.com](mailto:Joe.Bartoletti@snpgroup.com)



[Request a 1:1 demo](#)



1 972-915-2800



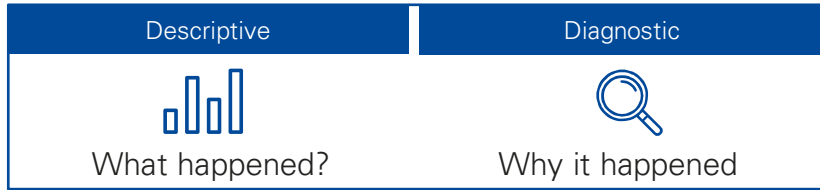
[americasmarketing@snpgroup.com](mailto:americasmarketing@snpgroup.com)



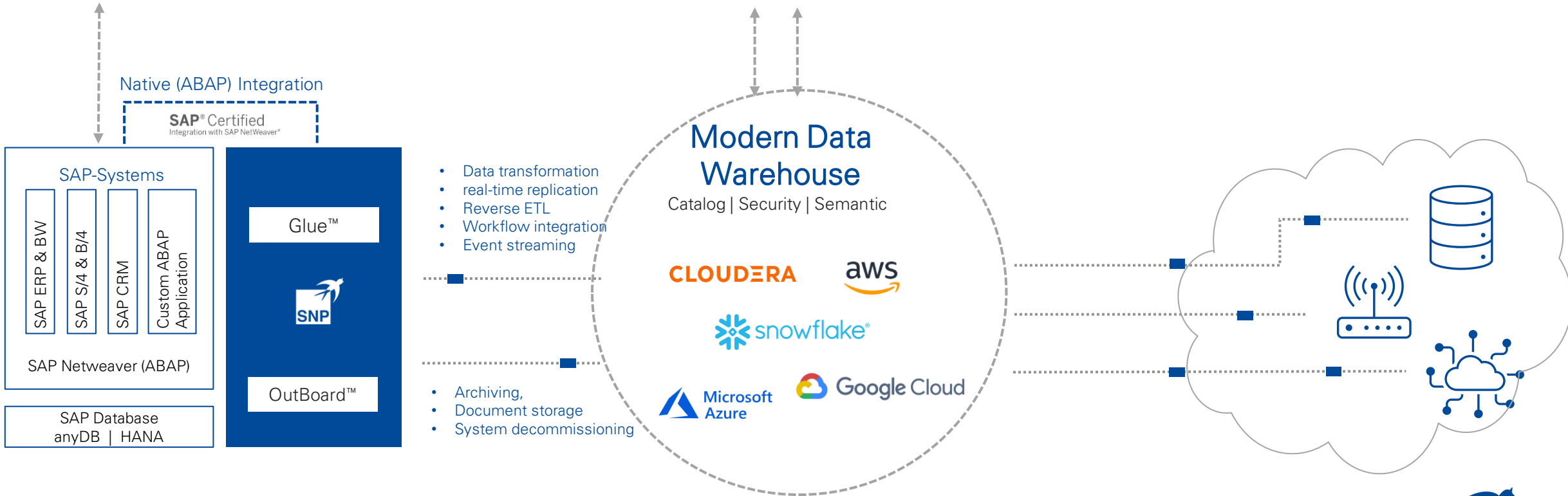
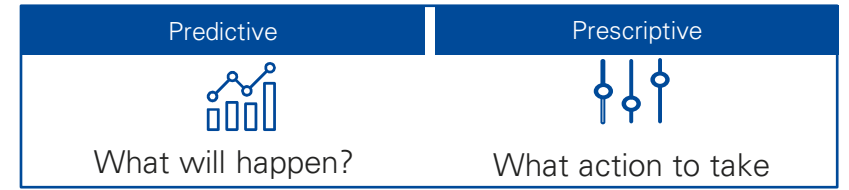
[www.snpgroup.com](http://www.snpgroup.com)

# Enterprise Landscape

Analyze



Innovate



# SNP Glue

A unique, cost effective solution specialized to integrate your SAP data with the cloud and big data platforms for your data driven strategy

## EXTRACT – TRANSFORM – LOAD

- Easily replicates SAP data from any SAP Netweaver application like ECC or BW
- Existing ABAP logic & infrastructure available for transformations
- SAP plug-in installation – no additional hardware or DB access required
- Full governance over data extraction process with a “push” approach

## UNLOCK SAP

- Broad support of SAP native objects (tables, views, extractors, BW objects and ABAP sources)
- Leveraging SAP Java connector to enable SAP to connect directly to Cloud endpoints (SDK, JDBC)
- Virtualization of remote data sources within SAP environment

## RAPID DEPLOYMENT

- Access to SAP Data Dictionary for fast & agile development
- High transfer speed, performance, and parallelization utilizing existing SAP application server deployment
- Familiar SAPgui environment

## NATIVE INTEGRATION

- Leveraging SAP authorizations to restrict sensitive data sources in SAP
- SAP Transports & Software Logistics (TMS) for lifecycle management
- Integrated into existing SAP workflow for jobs execution & monitoring

# SAP Data Integration with SNP Glue



## Data Sources

SAP ERP, SAP CRM, SAP BW

- ERP Tables
- Custom ABAP extractors (Business Logic ABAP API, Function Module etc.)
- Views (HANA calculation and CDS Views)
- BW Extractors (SAPI/ODP)
- Info Providers (DSOs, ADSOs, Cubes)
- BEx queries
- Raw data

RDBMS (MSS, Oracle, DB2, SAP HANA ...)



## Data Processing

Transformation

(e.g. Field mapping & lookups)

- Business Process Library (Friendly Fields, Currency normalization, Glue Business Functions, Enrichment)
- Automatic Extraction Templates from SAP Data Dictionary
- Rich filtering – utilize standard SAP select options
- Generic + Trigger based Delta modes
- BW dataflow integration with support of (a)DSOs, Cubes, BEx queries
- Bi-directional extraction & Virtualization
- Mass execution + parallelization



## Data Targets

Cloud & Big Data

- AWS (S3, Redshift)
- Snowflake
- Other Hyperscale cloud vendors

RDBMS (MSS, Oracle, DB2, ...)

Cloud APIs ( Kafka)

Whatever your road to S/4HANA is, one **PROBLEM** remains consistent...

What do you do with the **DATA** you **DON'T** want in your new system?

Up to  
**48%**  
of your SAP data isn't  
used frequently

Average  
**30%**  
growth in system data  
per year

**6/10**  
of ERP's biggest  
tables have no  
business value

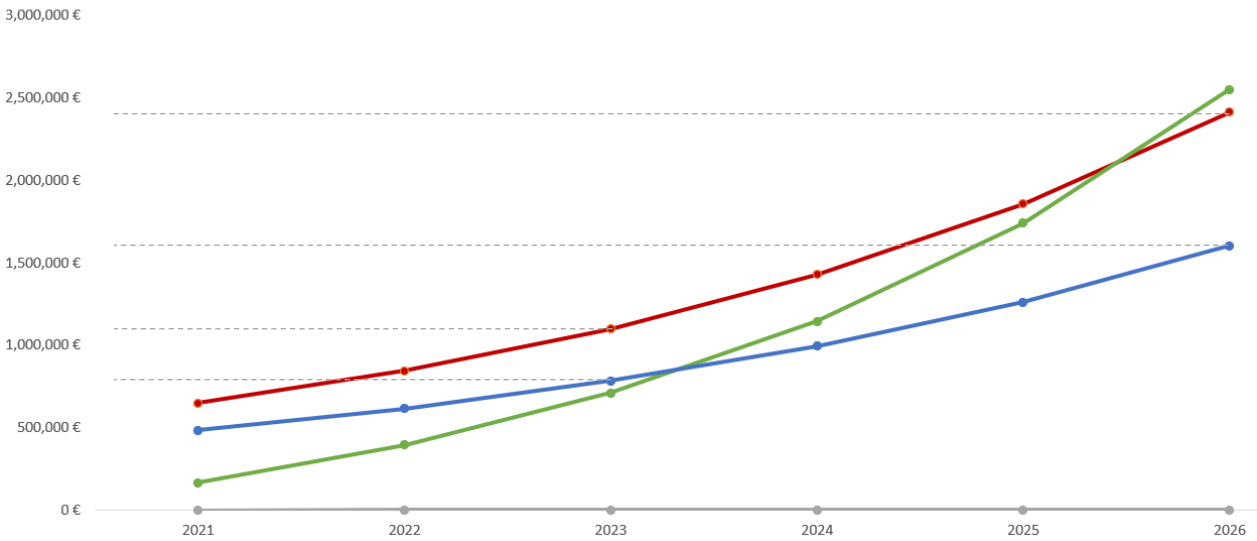
# Why Archiving matters?

## ASSUMPTIONS

- 2 TB**  
Initial data in HANA
- 30% per YR**  
data growth
- €250k per TB per YR**  
HANA System TCO
- 30% 1st YR**  
Initial archiving potential
- 10% per YR**  
Archiving potential

### TCO/ROI PERSPECTIVE

(in €)



Estimated 800k € savings in 2026 through archiving

Estimated 230k € savings in 2023 through archiving

—●— TCO Prediction w/o archiving      —●— TCO Prediction with Outboard      —●— Total savings through archiving (Accumulated)



# What we are hearing

## Common requests from customers



**Reduce size of SAP systems and SAP HANA** – one solution capable of handling all types of data (attachments, housekeeping, archiving, complete system decommissioning) and SAP systems (ECC, S/4HANA, BW, BW/4HANA)



**Use the storage fitting YOUR strategy** – moving to Cloud - Datavard Storage Management allows you to use the storage option from price vs. benefit perspective. Should your strategy change, changing the storage is very simple



**Keep the data accessible** – the data is still accessible for your SAP users as well as for the solutions in the cloud



**Manage conflicting requirements** - the unique mix of integration and size reduction allows you balance the conflicting requirements (full access vs. compliance, cost vs. access speed, full history vs. no history)



**Costs** – Provide a leaner archiving and system decommissioning solution up to 50% cheaper compared to similar products in the market



# TYPICAL USE CASE FOR DATA MANAGEMENT

From typical challenges running complex SAP landscapes to benefits of data management and opening new analytical use cases of a modern data warehouse with SAP and non-SAP data.

Goal	Background	Solution	Benefits
<ul style="list-style-type: none"><li>– Reduce the SAP data footprint by offloading aged SAP data.</li><li>– Leverage modern data warehouse to house growing data size of SAP (SAP ERP, S/4HANA, BW/4HANA or SAP BW)</li></ul>	<ul style="list-style-type: none"><li>– Current SAP system or predicted HANA sizing may be reaching to its physical limits or cost efficiency. It is required to take some of the not so frequently used (cold) data out of SAP into affordable storage.</li></ul>	<ul style="list-style-type: none"><li>– Implement offloading using Cloud-based data lake and SNP OUTBOARD Suite</li><li>– Analysis may uncover a potential for quick wins that should be implemented first.</li></ul>	<ul style="list-style-type: none"><li>– <b>Significantly reduce current storage costs</b> or costs associated with migration to HANA , S/4HANA, BW on HANA or BW/4HANA in the future</li><li>– <b>Enable further growth for new data</b> by removing the storage capacity constraint in current system</li><li>– <b>Quick implementation</b> vs other alternative solutions and cost efficiency</li><li>– <b>Supports further use cases of Modern Data Warehouse and SAP</b></li></ul>

# SNP Outboard Suite – ERP SAP Archiving and BW Data Tiering

The Outboard Suite is a collection of solutions that help you identify the right data to offload to any platform you choose, automates the process, and enables analytics on offloaded data.

## Flexible (ECC and BW) + Automated (BW)

- Leverages different SAP and SNP Technologies for flexible data management
- Automation is an integral part of the software design to ensure the costs of running SAP are as low as possible.
- For BW - Usage analysis and AI provides detailed recommendation for data management

## Storage Independence

- Leverage current modern data warehouse investments
- Allows you to use the best storage in terms of costs and performance,
- Partnerships with all 3 major Cloud vendors

## Enhanced Analytical Potential

- Enables modern analytics on hot, warm and cold SAP data combined with non-SAP data
- Archive from any Netweaver System (ECC, Suite on HANA, S/4HANA, SAP BW, BW on HANA, BW on non-HANA, BW/4HANA)

## Trusted

- Certified by SAP
- Audit certified by KPMG

# SAP System Decommissioning



## SNP DataFridge™

A simple solution to decommission legacy SAP systems leftover after your move to S/4HANA. Reduce your TCO but maintain controlled, easy access over the data you need!



### ENSURE COMPLIANCE

- KPMG certified solution
- Includes retention management, data purging and legal hold



### FULL ACCESS & CONTROL

- Access data for reporting or auditing purpose
- Familiar SAP frontend for your SAP users – including standard transactions and reports
- User friendly web browser for the occasional user, and easy exports for auditing purposes



### COST REDUCTION

- Eliminate costs such as hardware, software and support
- No need to 'archive first'
- 30+ cheaper target storages supported (On Prem + Cloud)
- No additional hardware required



Thank you for your time!

SNP Transformations, Inc

4829 West Royal Lane | Suite 202

Irving, TX 75063

USA



+1 972-915-2800



[americasmarketing@snpgroup.com](mailto:americasmarketing@snpgroup.com)



[www.snpgroup.com](http://www.snpgroup.com)



[@SNP\\_Americas](https://twitter.com/SNP_Americas)



[snp-america](https://www.linkedin.com/company/snp-america)



[@SNP\\_Americas](https://www.instagram.com/SNP_Americas)

# Disclaimer

© 2021 SNP Schneider-Neureither & Partner SE or an SNP affiliate company. All rights reserved. No part of this publication may be reproduced or transmitted in any form or for any purpose without the express permission of SNP SE or an SNP affiliate company. The information contained herein may be changed at any time without notice. Some software products marketed by SNP SE and its distributors contain proprietary software components of other software vendors.

This document is a preliminary version and not subject to your license agreement or any other agreement with SNP. This document contains only intended strategies, developments, and functionalities of the SNP product and is not intended to be binding upon SNP to any particular course of business, product strategy, and/or development. SNP assumes no responsibility for errors or omissions in this document. SNP does not warrant the accuracy or completeness of the information, text, graphics, links, or other items contained within this material. This document is

provided without a warranty of any kind, either express or implied, including but not limited to the implied warranties of merchantability, fitness for a particular purpose, or non-infringement.

SNP shall have no liability for damages of any kind including without limitation direct, special, indirect, or consequential damages that may result from the use of these materials. This limitation shall not apply in cases of intent or gross negligence.

SAP and other SAP products and services mentioned herein as well as their respective logos are trademarks or registered trademarks of SAP SE (or an SAP affiliate company) in Germany and in several other countries. All other product and service names mentioned are the trademarks of their respective companies.

Heidelberg, Germany 2021