



SAP Enterprise Support Value Maps

What are they and Why you should use them

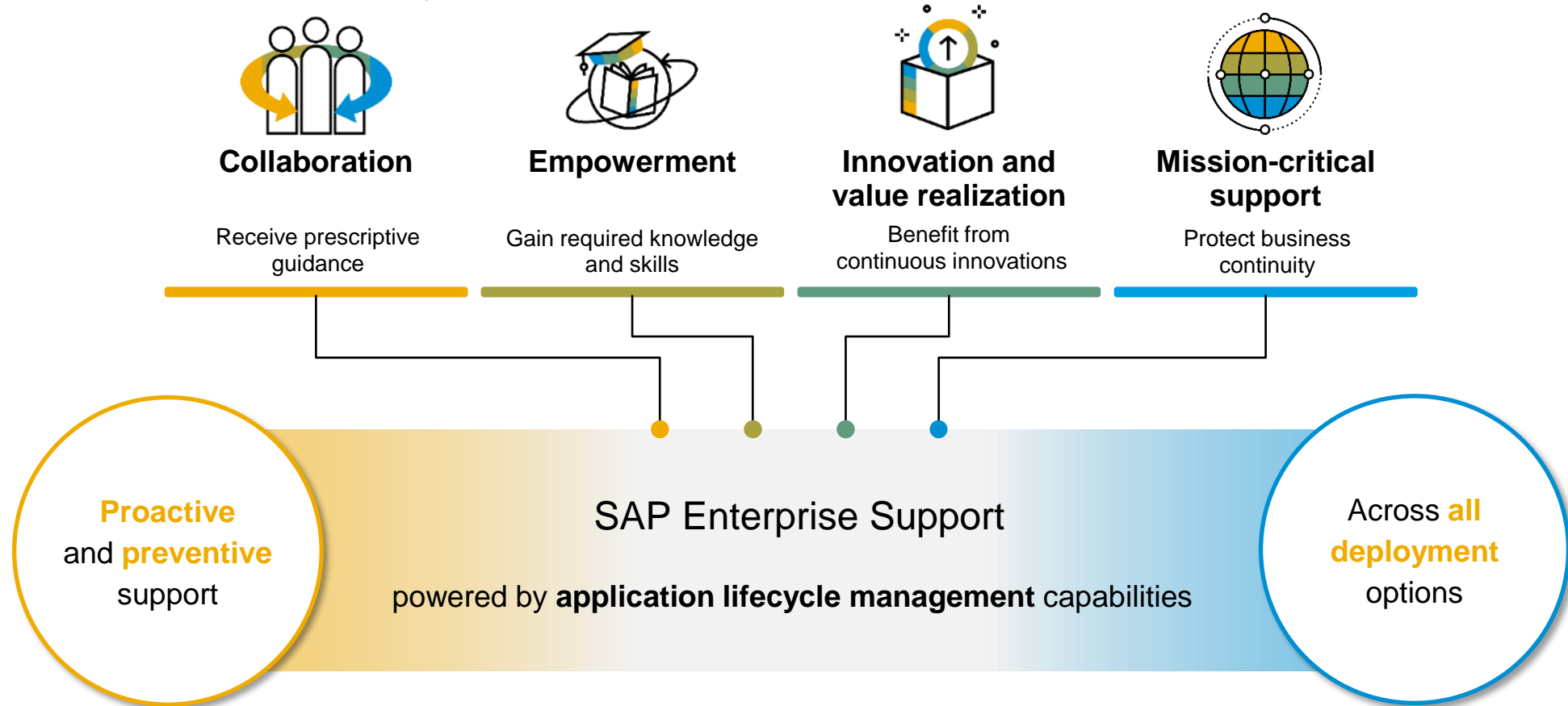
SAP Services and Support
October, 2022

PUBLIC



SAP Enterprise Support

Establish the foundation for your success



SAP Enterprise Support helps you address the digital skills gap and build the know-how you need to thrive in the digital economy by providing high-impact empowerment and collaboration programs such as **SAP Enterprise Support Academy** and **SAP Enterprise Support value maps**. Utilizing **SAP Learning Hub** as the delivery platform, both programs leverage a learning environment that is scalable, intuitive, social, and collaborative, bringing SAP much closer to understanding and fulfilling your needs.

SAP Enterprise Support Value Maps

SAP Enterprise Support value maps – an empowerment and support program, which leads you through the knowledge, skills, experts and services needed to address business challenges and adopt intelligent technologies. Learn more [here](#).



Program Offerings

- **Prescriptive guidance** - Structured content enables guided journey, simplification, and accelerated consumption of content
- **Expert access** - SAP experts provide prescriptive guidance, best practices and technology insight
- **Social Collaboration** - Forums allow you to exchange ideas and best practices with SAP experts and peers
- **Empowerment** - Interactive learning formats to empower you with the knowledge and skills for realizing your deployment strategy



User Benefits

- **Advance** digital skill level with interactive learning formats
- **Achieve** deployment and operational goals
- **Maximize** the value of your SAP solutions
- **Reduce** training expenditures
- **Get quick** advice from SAP experts and peers
- **Easy** access to latest news and releases
- **Access** to virtual events with leading experts
- **Record** of learning accomplishments

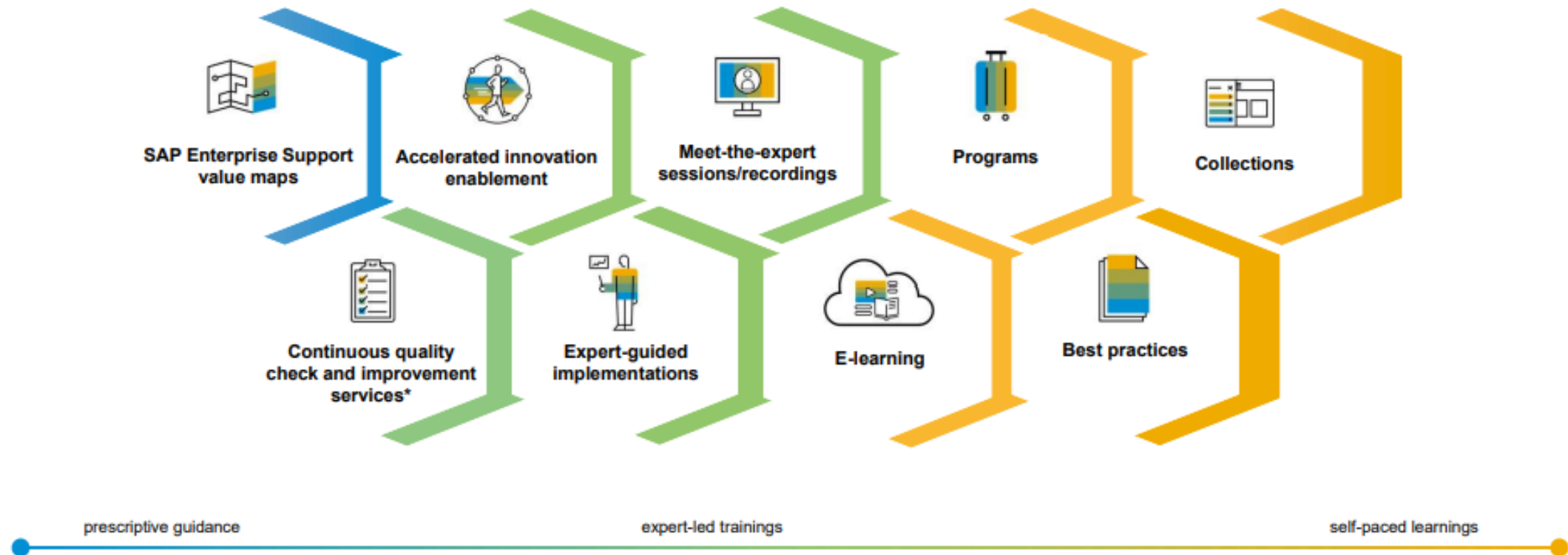
Available value maps

SAP S/4HANA	SAP SuccessFactors HXM Suite	SAP Business Technology Platform	Application Lifecycle Management
SAP S/4HANA Cloud	SAP Analytics Solutions	Business Process Transformation	Business Process Improvement
SAP S/4HANA Cloud, private edition	SAP Customer Experience solutions	Data Volume Management	Security
		SAP Digital Supply Chain	SAP Ariba solutions

SAP Enterprise Support Academy – Delivery Formats

Utilizing SAP Learning Hub as delivery platform, we offer a wide range of educational content tailored to your needs. From expert guidance, self-paced learning offerings, live sessions as well as guided programs, each customer can find the right format to consume the desired learning content. With analytical insights on consumption, and direct feedback from you, we continually improve our portfolio and services to provide you the right expertise and experience.

Visit us on SAP Support Portal
[SAP Enterprise Support Academy](#)



SAP Enterprise Support Academy – Delivery Formats (Cont.)

SAP Enterprise Support Learning Assets – SAP Enterprise Support Academy offers a wide range of educational training offerings augmented with an ever-evolving database of learning assets, supporting different learning styles and needs, from ad hoc problem solving to structured, long-term knowledge acquisition



Collection

SAP solution-related information bundled together to support you, acting as first step of knowledge transfer in to SAP solutions.

[Browse our collections](#)



Best Practice

Library of how-to guides for your typical implementational and operational tasks for products, databases, and operating systems (used cases e.g. troubleshooting, implementation/ upgrade instructions, system/ technical administration).

[Browse our best practice how-to guides](#)



E-learning

Interactive self-paced online courses covering a variety of popular SAP solution topics. Each includes highly effective learning components such as recorded expert modules, demo, slides.

[Browse our E-learning](#)

Access our previous tutorials and videos from the below links:

[Browse our tutorials](#)

[Browse our videos](#)

Expert-Led Learning



Meet-the-Expert

Scheduled live webcasts which typically lasts for 1 hr, providing overviews and first insights on concepts, theoretical introduction on strategy, processes & solutions and the support aspects of the latest SAP technologies. Recorded sessions will be available as E-learning in the future for self-paced consumption.

[Browse all scheduled live sessions](#)

[Browse all MTE recordings](#)

Live Must-Know is a webcast under Meet-the-Expert which is a series of interactive, live sessions hosted in multiple languages and time zones with full of "must-know" facts.

[Available sessions](#)



Expert-guided Implementation

Multi-day, remote, workshop-style session where participants learn to customize and execute complex activities in their own system landscape (for example, commissioning the service desk, or setting up test management in SAP Solution Manager) with experienced SAP service engineers.

[Get more details](#)

[Browse all scheduled live sessions](#)

[Browse all EGI offerings](#)



Accelerated Innovation Enablement

1:1 live sessions with SAP subject matter experts to understand the innovation capabilities and functionalities of the latest SAP enhancement packages for SAP Business Suite software's and how they may be integrated or deployed for your business process requirements.

[Get more details](#)

[Request AIE](#)

Self-Paced Learning

SAP Enterprise Support Value Maps – Learning Delivery Formats

SAP Enterprise Support Learning Assets – SAP Enterprise Support Academy offers a wide range of educational training offerings augmented with an ever-evolving database of learning assets, supporting different learning styles and needs, from ad hoc problem solving to structured, long-term knowledge acquisition

Guided Learning



Program

Modular learning approach bundling different learning formats and content to ensure users receive a powerful and deep-dive knowledge about a topic.

[Browse our programs](#)



Learning Journey

Learning Journeys are structured visual guides designed to help you navigate the recommended route to gain full competence, or expand your skills, for specific roles and SAP solutions.

[Browse all Learning Journeys](#)



Digital Badge

Digital knowledge badges are issued in the context of the SAP Enterprise Support Academy value maps offerings and provide a digital proof of successful program completion.

Available digital badge learning programs:

[Data Volume Management for SAP S/4HANA Operation](#)

[SAP Integration Suite: Become an Integration Black-belt](#)

[SAP SuccessFactors Employee Central Integration](#)

*Note: All above formats available as guided learning are part of the SAP Enterprise Support Academy value maps program.

Access the [value maps program](#)

SAP Enterprise Support Value Maps

How to register and access value maps in 2 steps

Step 1

Request access to SAP Learning Hub, edition for SAP Enterprise Support.
Watch [the video](#) and refer to our [tutorial](#) to learn how to sign up and use the hub.
If you are already registered you should use 'Access Value Maps' button.

Sign Up



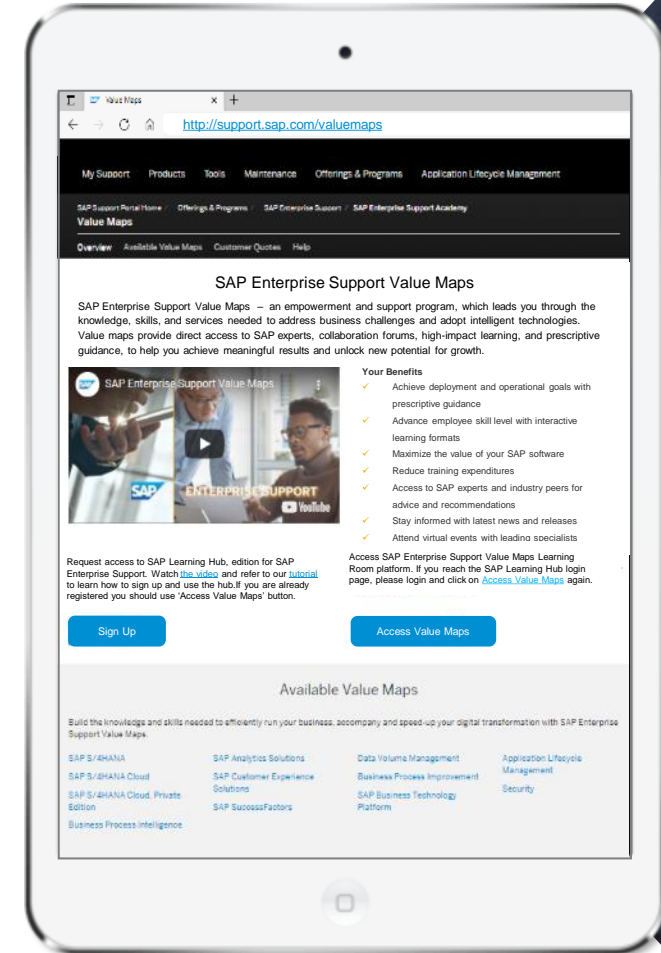
Step 2

Access SAP Enterprise Support Value Maps Learning Room platform. If you reach the SAP Learning Hub login page, please login and click on [Access Value Maps](#) again.

Access Value Maps



| Learn more: <https://support.sap.com/valuemaps>



SAP Enterprise Support Value Maps

Navigate through the main learning room



Get started with the main value maps group



Select the topic of your interest



Get empowered for RISE with SAP



Ask a question or request a call with our experts

SAP Enterprise Support Value Maps

Get started with RISE with SAP

Customers starting their transformation with RISE with SAP can benefit from the below resource:



[RISE with SAP: Getting Started](#)

Learn how you can benefit from the SAP Enterprise Support cloud edition resource for your transformation with RISE with SAP



[RISE with SAP: Business Process Transformation](#)

Here you will find some foundational resources regarding the process discovery tool from SAP.



[RISE with SAP: SAP S/4HANA Cloud](#)

Here you will find some foundational resources regarding SAP S/4HANA Cloud.



[RISE with SAP: SAP S/4HANA Cloud, private edition](#)

Here you will find some foundational resources regarding SAP S/4HANA Cloud, private edition



[RISE with SAP: Business Network](#)

Here you will find some foundational resources regarding the SAP Business Network and RISE with SAP.



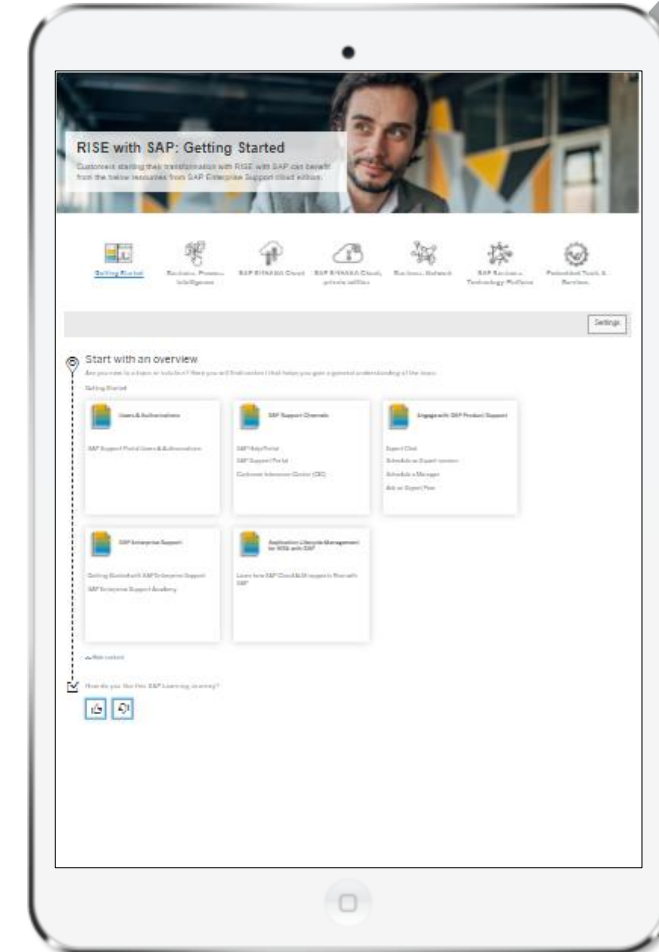
[RISE with SAP: SAP Business Technology Platform](#)

Here you will find resources regarding the SAP Business Technology Platform which can help you fast-track your move to SAP S/4HANA Cloud and support quicker, cohesive, and future-ready innovation.



[RISE with SAP: Embedded Tools & Services](#)

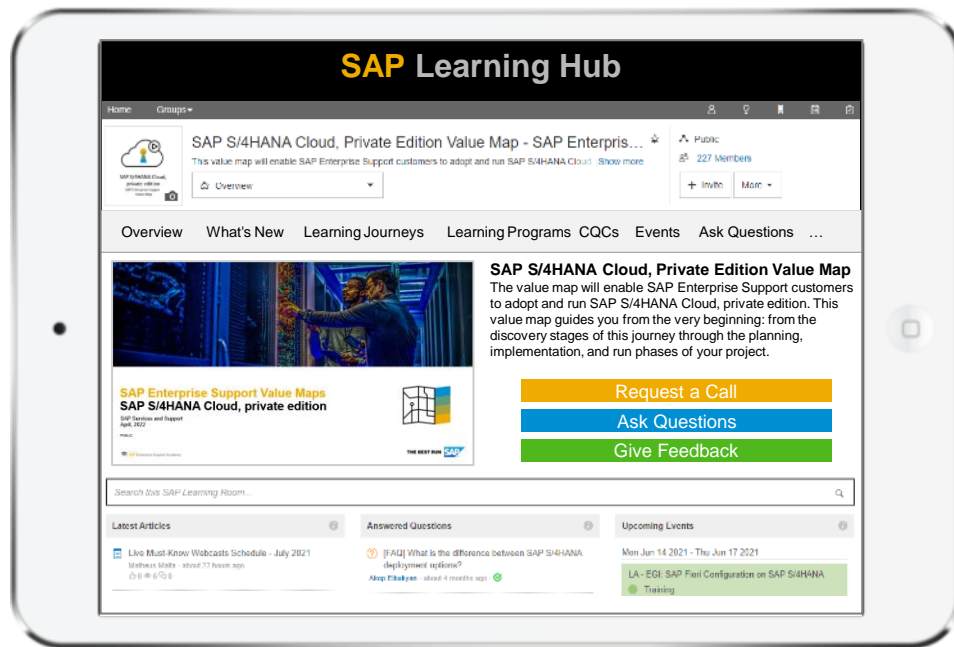
A number of tools and services are available to help you on your RISE with SAP journey.



SAP Enterprise Support Value Maps

Explore the value map for SAP S/4HANA Cloud, private edition

This value map will enable you to adopt and run SAP S/4HANA Cloud, private edition. It will guide you from the very beginning: from the discovery stages of this journey through the planning, implementation, and run phases of your project.



- Discover the value of SAP S/4HANA Cloud, private edition; get to know RISE with SAP
- Define your transition path to SAP S/4HANA Cloud, private edition
- Understand the tools for your journey to SAP S/4HANA Cloud, private edition
- Utilize SAP Readiness Check for SAP S/4HANA Cloud, private edition
- Understand SAP Activate for SAP S/4HANA Cloud, private edition
- Learn how to perform an SAP S/4HANA transition for new implementation, system conversion, or selective data transition
- Learn about SAP Fiori implementation and embedded analytics
- Leverage Continuous Quality Check services to ensure a smooth go-live



Complete your learning and empowerment path for SAP S/4HANA Cloud by accessing set of enablement content



Ask questions to get quick advice from SAP experts and industry peers



Request a call to get personalized guidance



Sign up for upcoming events or stay in the know with our topic-specific articles written by leading product and support specialists

SAP Enterprise Support Value Map for SAP S/4HANA Cloud, private edition

Quick wins

A **learning program** will guide you through a set of expertly chosen SAP Enterprise Support offerings, assets, and tools in a sequential and interactive format to empower you to achieve the defined outcome.

Plan and execute your system conversion to SAP S/4HANA Cloud, private edition

[Access Learning Program >>](#)

Prepare for your sandbox conversion to SAP S/4HANA Cloud, private edition

[Access Learning Program >>](#)

Learn SAP S/4HANA Finance

[Access Learning Program >>](#)

Learn SAP S/4HANA Central Finance

[Access Learning Program >>](#)

Learn SAP S/4HANA Logistics

[Access Learning Program >>](#)

Understand SAP Readiness Check for SAP S/4HANA

[Access Learning Program >>](#)

Prepare for conversion to SAP S/4HANA Finance

[Access Learning Program >>](#)

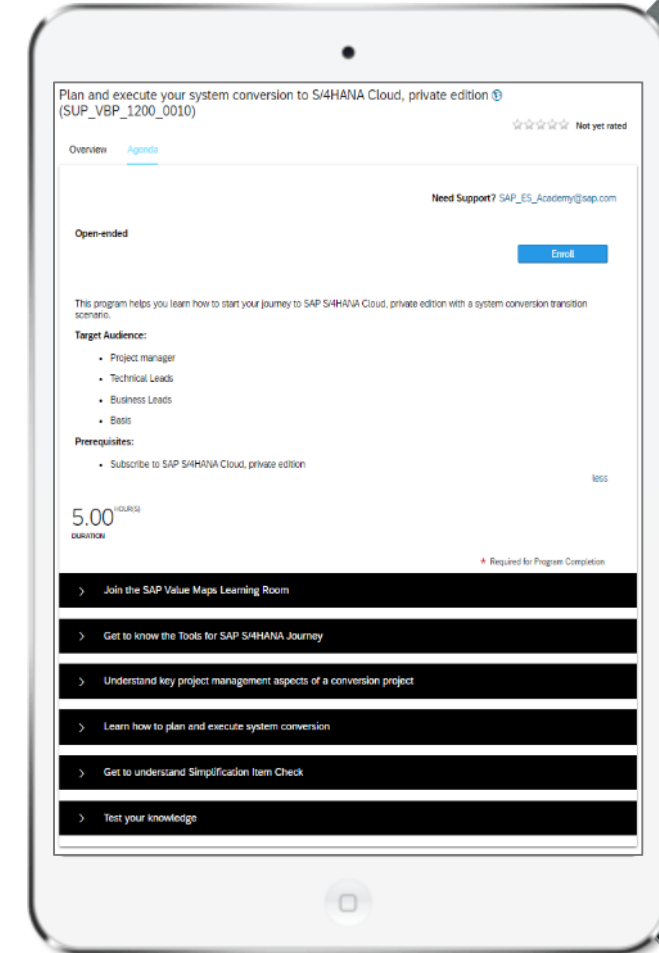
Prepare your custom code for SAP S/4HANA

[Access Learning Program >>](#)

Prepare Your SAP Fiori Implementation for SAP S/4HANA

[Access Learning Program >>](#)

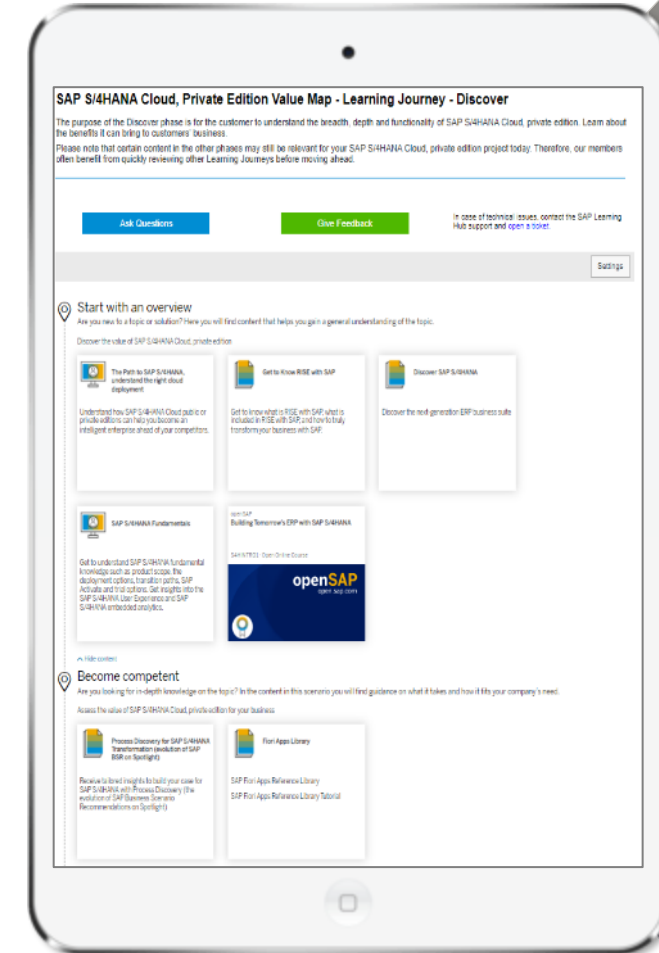
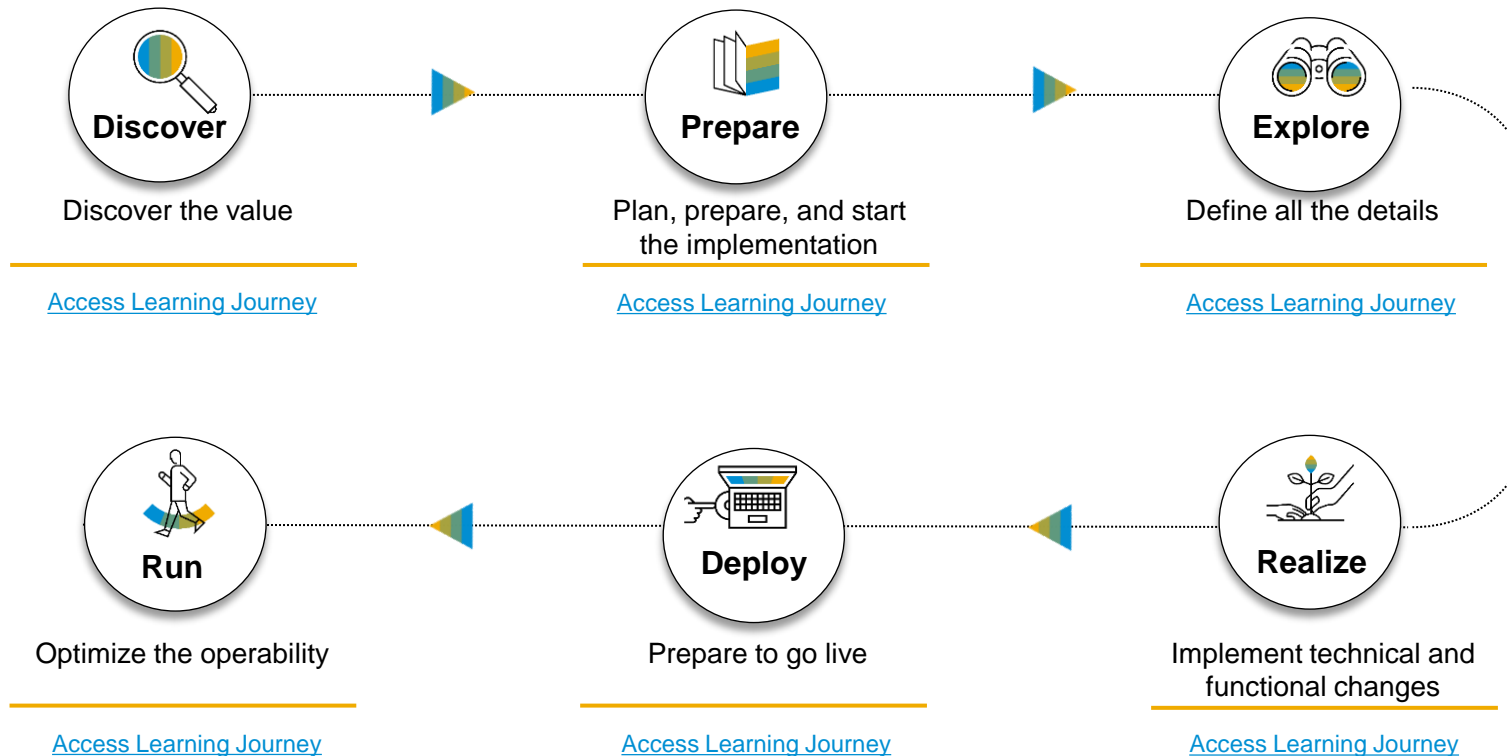
Access more learning programs [here](#)



SAP Enterprise Support Value Map for SAP S/4HANA Cloud, private edition

Learning Journeys

A **learning journey** is an interactive visual guide designed to help you complete your learning and empowerment path for a particular SAP topic by exploring, filtering, and accessing a curated set of SAP Enterprise Support offerings and learning assets.



SAP Enterprise Support Value Maps – Live Demo

The screenshot displays the SAP Learning Hub interface. At the top, the SAP logo and 'Learning Rooms' are on the left, and 'SAP Learning Hub' is in the center. A search bar on the right contains the text 'Search SAP Enterprise Su...'. Below the header, a navigation bar includes 'Home' and 'Groups'. The main content area features a 'SAP Enterprise Support Value Maps Learning Room' card. This card includes a thumbnail image, the title 'SAP Enterprise Support Value Maps Learning Room', a description 'Build your skills, reach your objective, connect with SAP experts, and obtain guidance with SAP Enterprise Support Value Maps', and a 'Show more' link. To the right of the card, it indicates 'Private' status and '11,296 Members'. Below the card, a tabbed interface shows 'Overview' as the active tab, with other tabs for 'RISE with SAP', 'What's New', 'Events', and 'Scope'. The main content area below the tabs features a large banner image of two people in a server room. Overlaid on this image is the text 'SAP Enterprise Support Value Maps' and a sub-header 'Enabling your journey to the intelligent enterprise to run at your best with SAP solutions that can help you grow more resilient, more profitable, and more sustainable.' Below the banner, there are two sections: 'Select a value map' and 'Enablement for SAP offerings'. The 'Select a value map' section lists eight options with icons: SAP S/4HANA, SAP S/4HANA Cloud, SAP S/4HANA Cloud, private edition, SAP SuccessFactors, SAP Customer Experience solutions, SAP Business Technology Platform, Data Volume Management, Business Process Intelligence, Application Lifecycle Management, and Business Process Improvement. The 'Enablement for SAP offerings' section features a 'RISE WITH SAP' logo, the text 'Business Transformation as a Service', and a 'Get Started' button. At the bottom of this section is a link 'Learn more about value maps'.

SAP Learning Hub

Search SAP Enterprise Su...

Home Groups

SAP Enterprise Support Value Maps Learning Room

Build your skills, reach your objective, connect with SAP experts, and obtain guidance with SAP Enterprise Support Value Maps. [Show more](#)

Overview

Private
11,296 Members
More

Overview RISE with SAP What's New Events Scope

SAP Enterprise Support Value Maps

Enabling your journey to the intelligent enterprise to run at your best with SAP solutions that can help you grow more resilient, more profitable, and more sustainable.

Select a value map

- SAP S/4HANA
- SAP S/4HANA Cloud
- SAP S/4HANA Cloud, private edition
- SAP SuccessFactors
- SAP Customer Experience solutions
- SAP Business Technology Platform
- Data Volume Management
- Business Process Intelligence
- Application Lifecycle Management
- Business Process Improvement

Enablement for SAP offerings

RISE WITH SAP Business Transformation as a Service

[Get Started](#)


Learn more about value maps

A background image of a business meeting with several people seated around a table. A large, semi-transparent blue circle is centered over the image, containing white text. The text is a quote from Sanjay Grewal, CEO and Executive Director of Virescent Infrastructure Investment Private Limited, about the success of SAP S/4HANA Cloud.

“For us to become a leader in the renewable energy sector, digitalizing our business was essential. With help from SAP Enterprise Support, we had a successful launch of SAP S/4HANA Cloud, private edition and, as a result, we’re now seeing faster access to information, more meaningful controls, and increased productivity.”

- Sanjay Grewal, CEO and Executive Director, Virescent Infrastructure Investment Private Limited

Find more SAP Enterprise Support success stories on [sap.com](https://www.sap.com)

THE BEST RUN 

SAP SuccessFactors Value Map - SAP Enterprise Support

Embedded Launch Activities

A clear road map to successfully launch your SAP® SuccessFactors® solutions

Focus Areas

> Guided enablement

Prepare for solution deployment with prerecorded assets and Q&A sessions on leading practices for business processes, solution architecture, and strategy topics, aligned to your roles

> Demo environment

Gain familiarity with leading practices through a preconfigured demo environment enriched with sample data

> Adoption touch points

Realize valuable insights by tracking process-specific adoption metrics and user-enablement metrics through survey touch points



Prepare for successful deployment



Accelerate time to initial value



Achieve solution adoption goals

Embedded Launch Activities for SAP SuccessFactors



Use embedded launch activities at **no additional cost** as part of a new SAP® SuccessFactors® product subscription*



Prepare yourself for a successful **deployment** and **adoption** of your solution

* SAP SuccessFactors solutions currently in scope:

- SAP SuccessFactors Employee Central
- SAP SuccessFactors Recruiting
- SAP SuccessFactors Onboarding
- SAP SuccessFactors Compensation
- SAP SuccessFactors Learning
- SAP SuccessFactors Performance & Goals
- SAP SuccessFactors Succession & Development
- Experience management bundle for succession and development
- Experience management bundle for core HR

Thank you.

Sign up for SAP Enterprise Support value maps

<http://support.sap.com/valuemaps>



For further details, please contact your SAP Enterprise Support Advisor or send an e-mail to:

sapesvaluemaps@sap.com

Contact Information:

Kathryn Rennard

k.rennard@sap.com

Jonna Smart

jonna.smart@sap.com