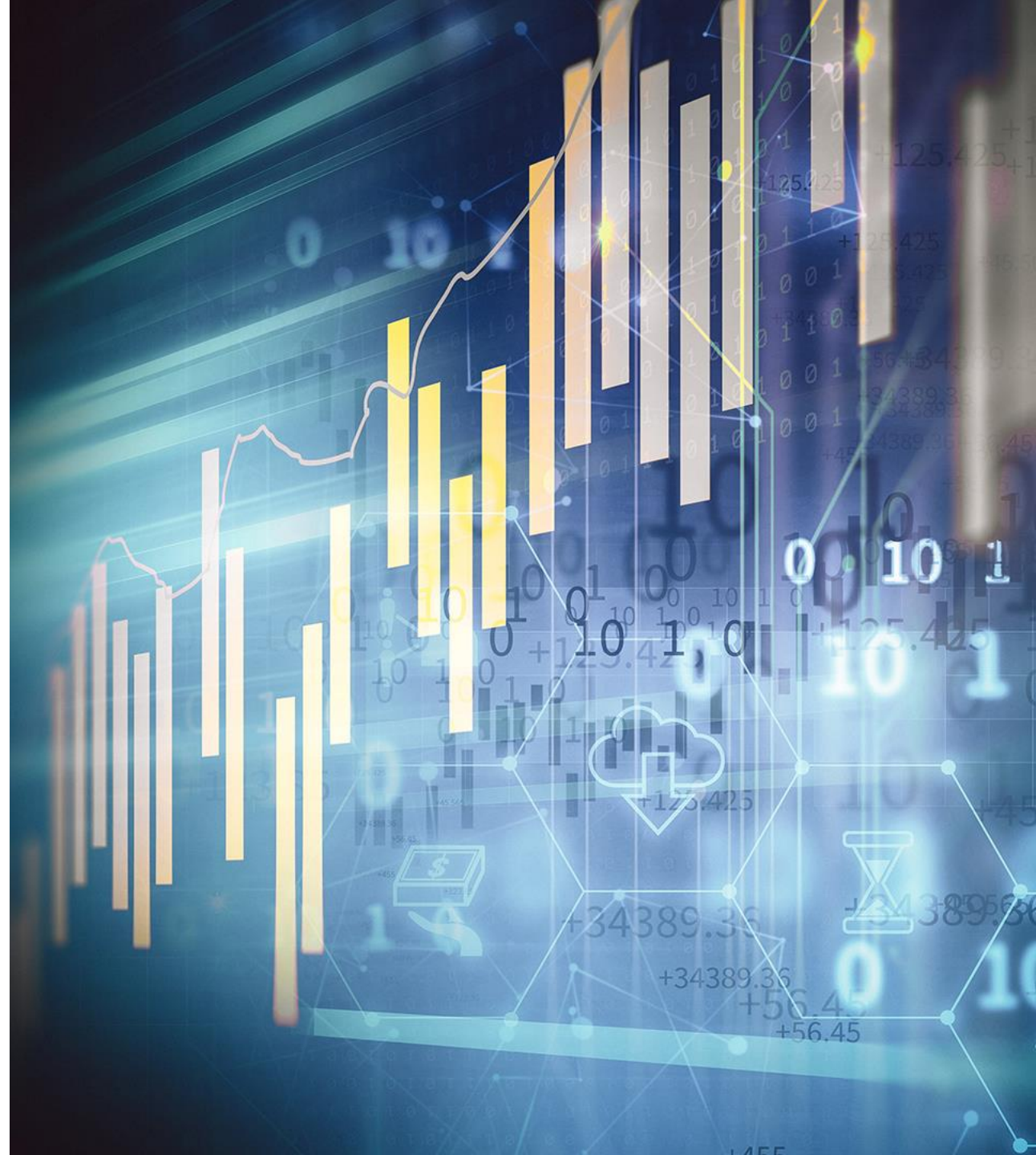


TRANSFORM YOUR BUSINESS WITH ACCESSIBLE, ANALYTICS READY DATA YOU CAN TRUST

ASUG Texas & Oklahoma Meeting

October 28, 2022



Meet Your Presenter



Benjamin Deaver
Senior Solution Architect

 Benjamin.Deaver@snpgroup.com



[Request a 1:1 demo](#)



1 972-915-2800



americasmarketing@snpgroup.com



www.snpgroup.com

Integration is a Major Challenge

80%

of SAP data
integration projects
fail

SAP is a KEY Data Source

98%

of the top 100 most
valued brands in the
world run SAP

77%

of the world's transaction
revenue touches an SAP
system

Integration is a Major Challenge

80%

of SAP data
integration projects
fail

- External integration & indirect access
- System performance, stability & long load times
- Delta load for large data volumes
- Connection to modern cloud innovation platforms
- Long lead times for preparing SAP data for innovative use cases

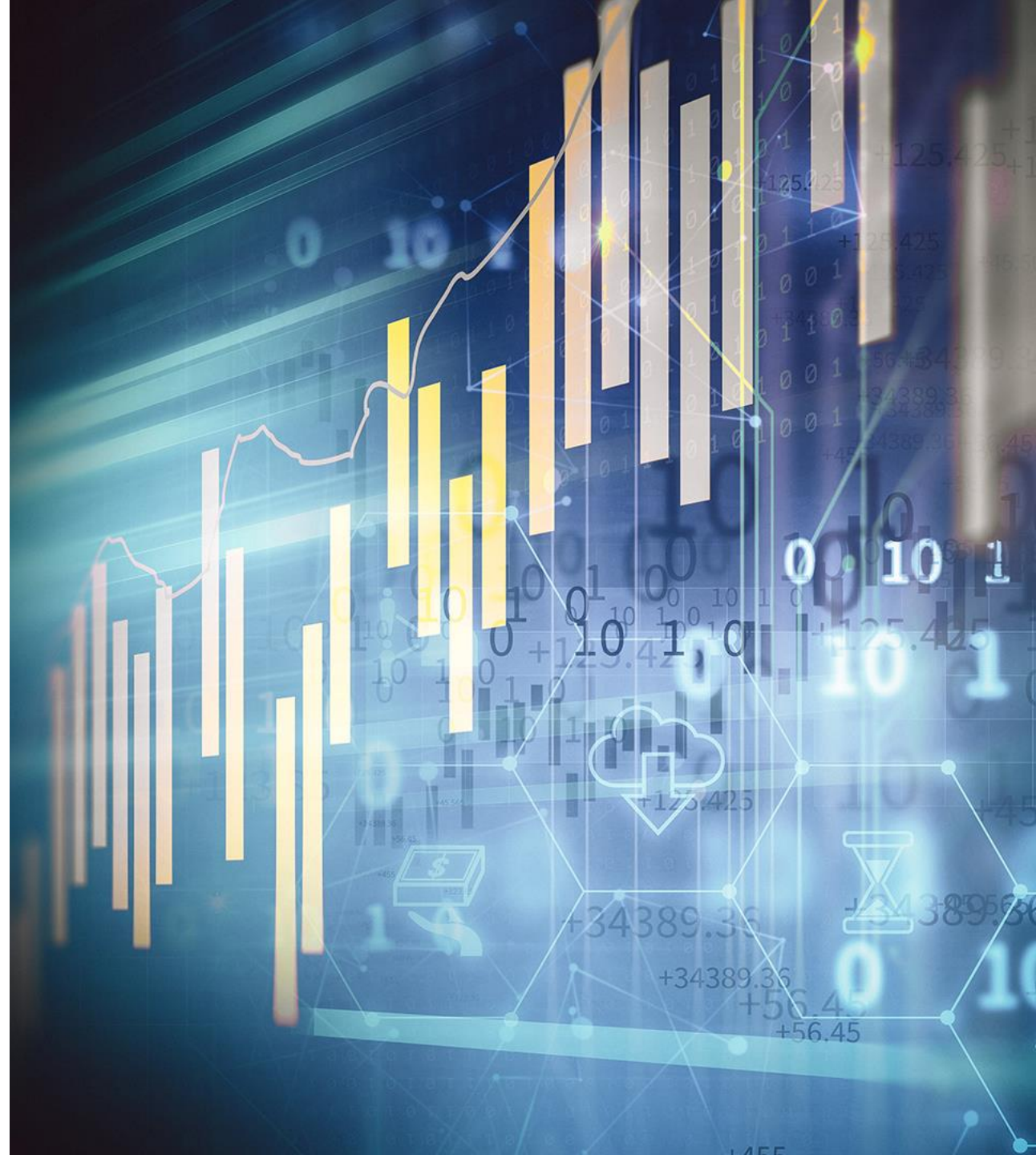
CUSTOMER STORY

UNITED FARMERS OF ALBERTA COOPERATIVE

The logo for the United Farmers of Alberta (UFA) features the letters 'UFA' in a bold, green, sans-serif font. The letters are centered within a white, shield-like shape that has a pointed top and bottom. This shield is framed by two orange, curved lines that extend outwards from the top and bottom points, resembling a stylized roof or a banner.

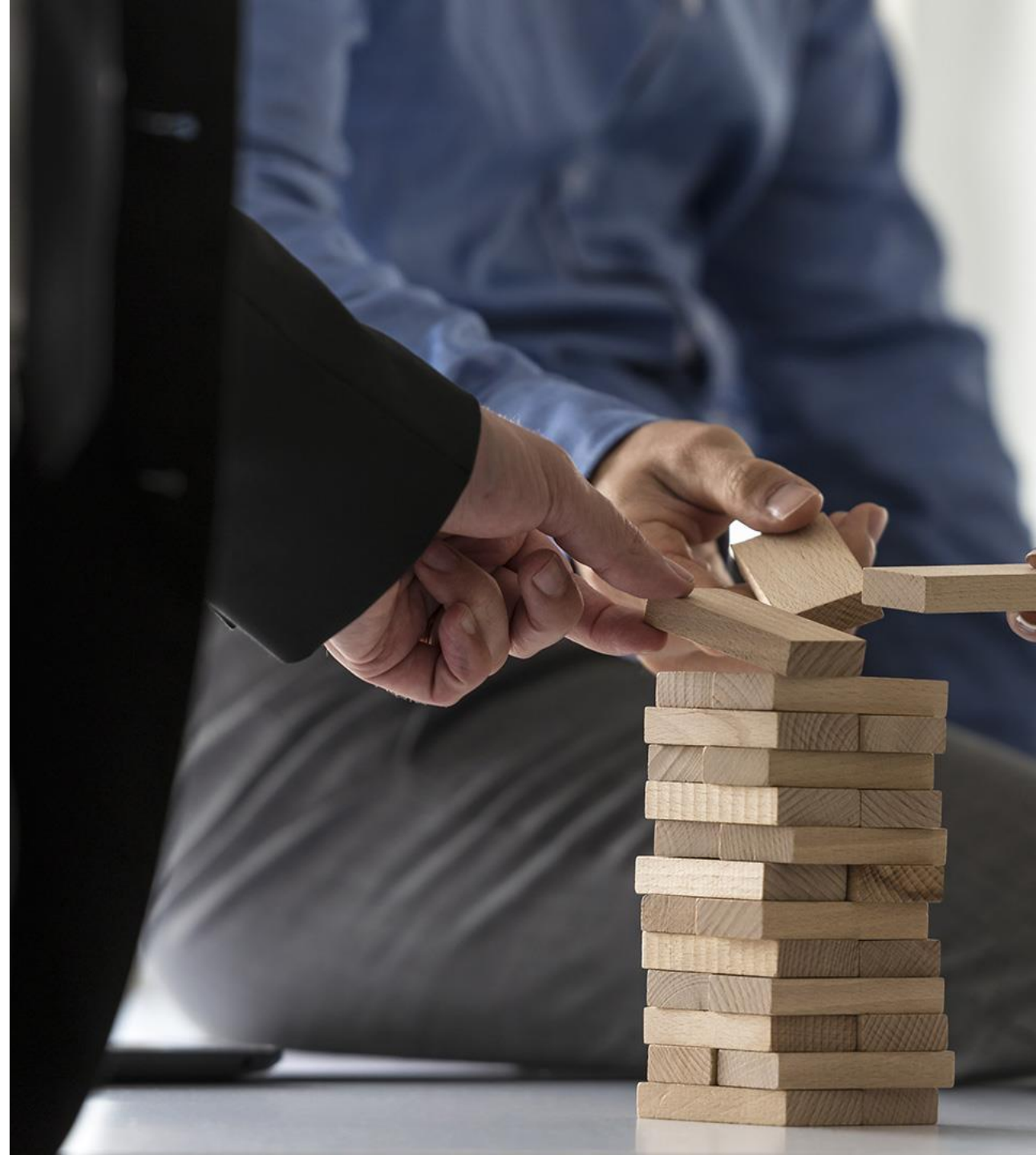
UFA

Eric Street – Manager BI & Analytics
Muhammad Chaudhry – BI/BW Analyst
Loyd Sun – BI/BW Analyst



“Glue is going to become a very, very crucial part of the UFA landscape. We are using it right now on our member equity and patronage program to replicate SAP data and we will also be using it in our BW replacement project which is ongoing right now, expecting to have BW replaced by Glue by the end of the year”.

Matthew Alves, Director Enterprise Applications, UFA



How Can SNP Help You?



Recognized Expertise

- Over 20 years in SAP-Transformations
- Front-runner in SAP BW Transformations
- True “One Stop Shop” for SAP-Data
- Experience with largest data volumes (100+ TB)
- Proven & award-winning Technology



Ask new Questions

- Drive incremental insights
- Increase your data scope (business + dark data)
- Enable 360°Anything, integrated Analytics, Predictive X & Data Science.



DATA MANAGEMENT & GOVERNANCE



Democratize Data

- Integrate your Data Lake with SAP
- Get data flexibly, automatically and in real-time
- Enable next generation Self-Service BI and ABAP for Data Lake

Glue™ In A Nutshell

A unique, cost effective solution specialized to integrate your SAP data with the cloud and big data platforms for your data driven strategy

Extract – Transform – Load

- Easily **REPLICATES** SAP data from any SAP NetWeaver application like ECC or BW
- Existing ABAP logic & infrastructure available for transformations
- SAP plug-in installation – no additional hardware or DB access required
- Full governance over data extraction process with a “push” approach

UNLOCK SAP

- Broad support of SAP native objects (tables, views, extractors, BW objects and ABAP sources)
- Leveraging SAP Java connector to enable SAP to connect directly to a Cloud endpoints (SDK, JDBC)
- Virtualization of remote data sources within SAP environment

RAPID DEPLOYMENT

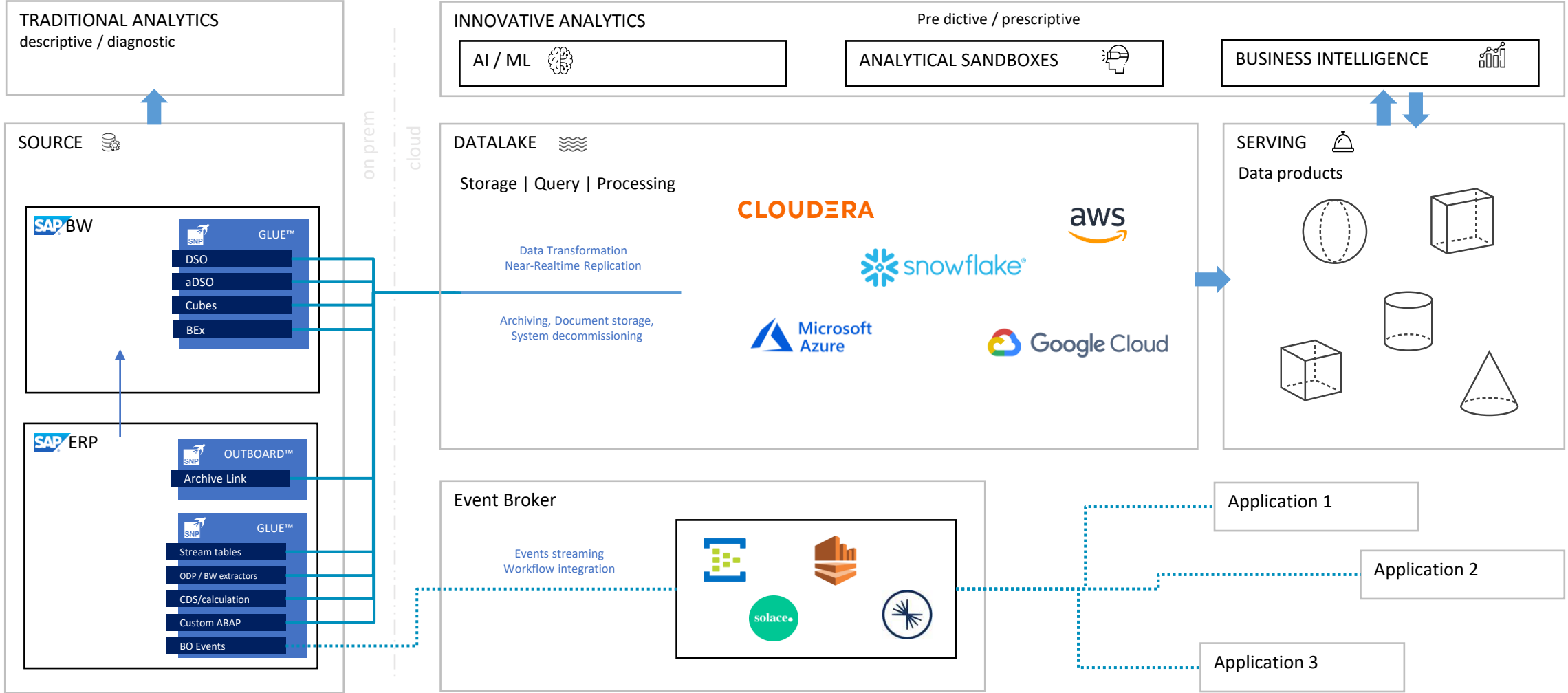
- Access to SAP Data Dictionary for fast & agile development
- High transfer speed, performance, and parallelization utilizing existing SAP application server deployment
- Familiar SAPgui environment

NATIVE INTEGRATION

- Leveraging SAP authorizations to restrict sensitive data sources in SAP
- SAP Transports & Software Logistics (TMS) for lifecycle management
- Integrated into existing SAP workflow for jobs execution & monitoring

Enterprise landscape

SAP integration with the enterprise data platform



SAP Data Integration with SNP Glue™



Data Sources

SAP ERP, SAP CRM, SAP BW

- ERP Tables
- Custom ABAP extractors (Business Logic ABAP API, Function Module etc.)
- Views (HANA calculation and CDS Views)
- BW Extractors (SAPI/ODP)
- Info Providers (DSOs, ADSOs, Cubes)
- BEx queries
- Raw data

RDBMS (MSS, Oracle, DB2, SAP HANA ...)

Cloud APIs (salesforce, HubSpot)



Data Processing

Transformation

(e.g. Field mapping & lookups)

- Business Process Library (Friendly Fields, Currency normalization, Glue Business Functions, Enrichment)
- Automatic Extraction Templates from SAP Data Dictionary
- Rich filtering – utilize standard SAP select options
- Generic + Trigger based Delta modes
- BW dataflow integration with support of (a)DSOs, Cubes, BEx queries
- Bi-directional extraction & Virtualization

Mass execution + parallelization



Data Targets

Cloud & Big Data

- Microsoft Azure
- AWS
- Google Cloud Platform
- SAP HANA Enterprise Cloud
- Cloudera (Hive/Impala)
- Spark clusters (DataBricks)
- Snowflake

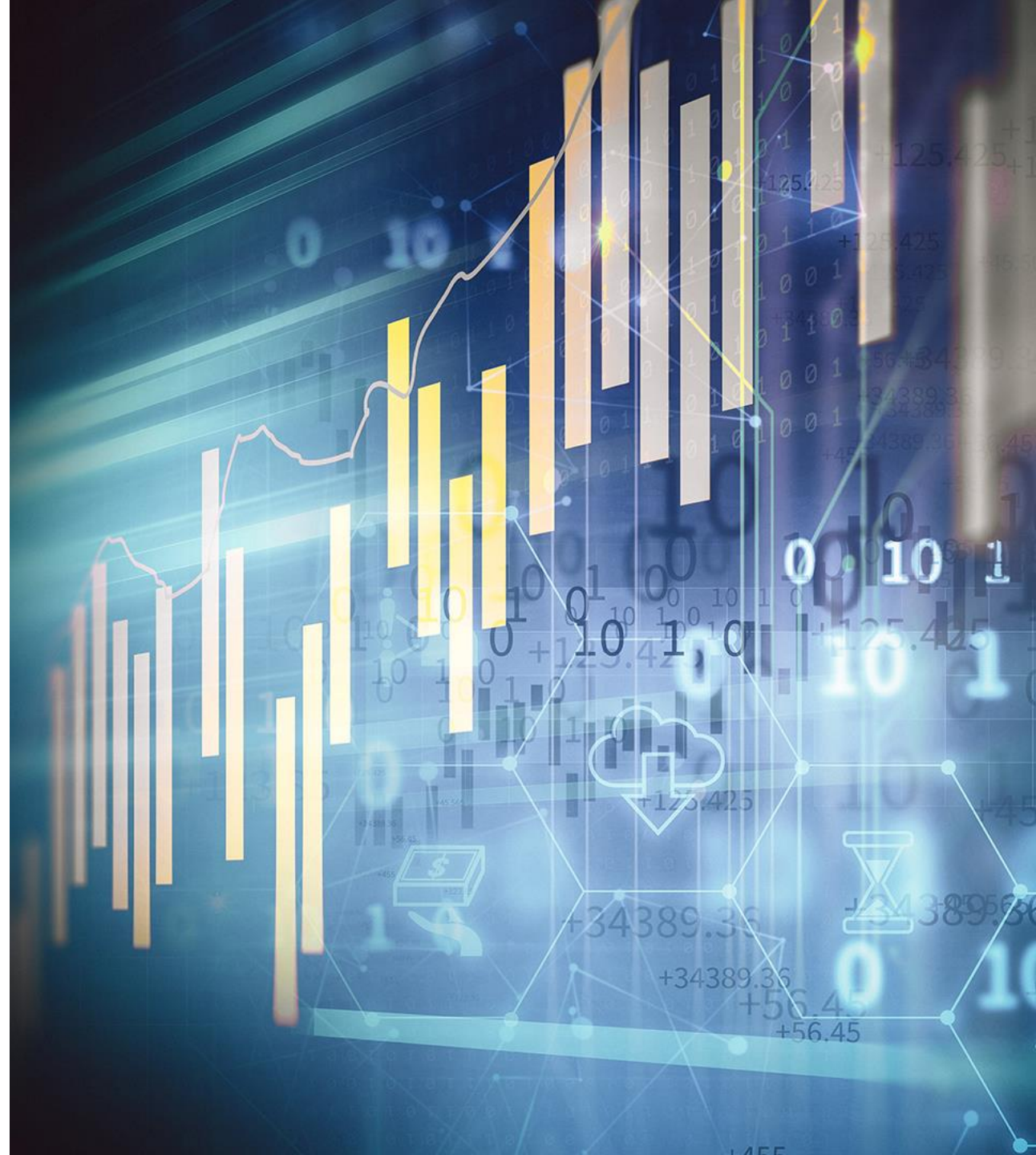
RDBMS (MSS, Oracle, DB2, ...)

Cloud APIs (nifi, Kafka)

DEMO

- DEMOCRATIZE DATA
- ANALYTICS USE CASE

Martin Luknar
Solution Architect | R&D
martin.luknar@snpgroup.com




Q&A



Thank you for your time!

SNP Transformations, Inc
4829 West Royal Lane | Suite 202
Irving, TX 75063
USA

 +1 972-915-2800

 americasmarketing@snpgroup.com

 www.snpgroup.com

 [@SNP_Americas](https://twitter.com/SNP_Americas)

 [_SNP-GROUP](https://www.linkedin.com/company/SNP-GROUP)

 [@SNPGROUP](https://www.instagram.com/SNPGROUP)

Disclaimer

© 2020 SNP SE or an SNP affiliate company. All rights reserved. No part of this publication may be reproduced or transmitted in any form or for any purpose without the express permission of SNP SE or an SNP affiliate company. The information contained herein may be changed at any time without notice. Some software products marketed by SNP SE and its distributors contain proprietary software components of other software vendors. This document is a preliminary version and not subject to your license agreement or any other agreement with SNP. This document contains only intended strategies, developments, and functionalities of the SNP product and is not intended to be binding upon SNP to any particular course of business, product strategy, and/or development. SNP assumes no responsibility for errors or omissions in this document. SNP does not warrant the accuracy or completeness of the information, text, graphics, links, or other items contained within this material. This document is provided without a warranty of any kind, either express or

implied, including but not limited to the implied warranties of merchantability, fitness for a particular purpose, or non-infringement.

SNP shall have no liability for damages of any kind including without limitation direct, special, indirect, or consequential damages that may result from the use of these materials. This limitation shall not apply in cases of intent or gross negligence.

SAP and other SAP products and services mentioned herein as well as their respective logos are trademarks or registered trademarks of SAP SE (or an SAP affiliate company) in Germany and in several other countries. All other product and service names mentioned are the trademarks of their respective companies.

Heidelberg, Germany 2020