



# BTP Summit

Presented by **ASUG**

## KEY NOTES

covered during presentations



SAP® SYSTEM INTEGRATORS



# AGENDA

- Recap on the BTP SUMMIT
- About SDA
- Our value proposition for SAP BTP
- Conclusion

## Highlights / Key Messages

- BTP is **NOT** an IT toolbox.
- SAP BTP **empowers business users** by providing a unique experience, with integrated business functions, real-time analytics data and collaboration features
- Business users become **Citizen Developers** with the low-code/no-code concept
- By combining the power of SAC with Workzone and SPA, it translates into **Increased Efficiency** and **Augmented Intelligence** and allow your end users to make better, faster and smarter business decisions
- SAP BTP helps to keep your **core clean**



# Workzone

## The Challenges

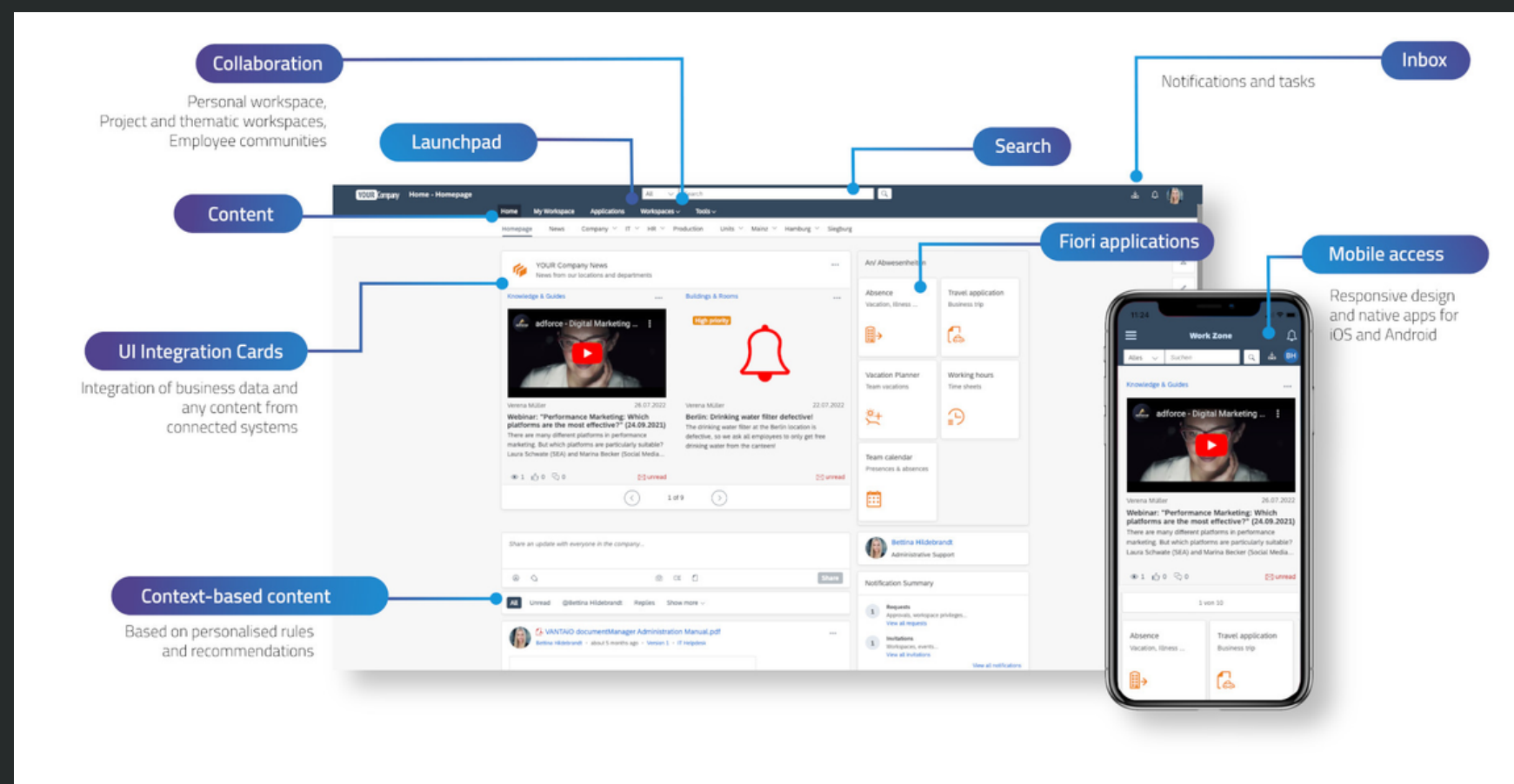
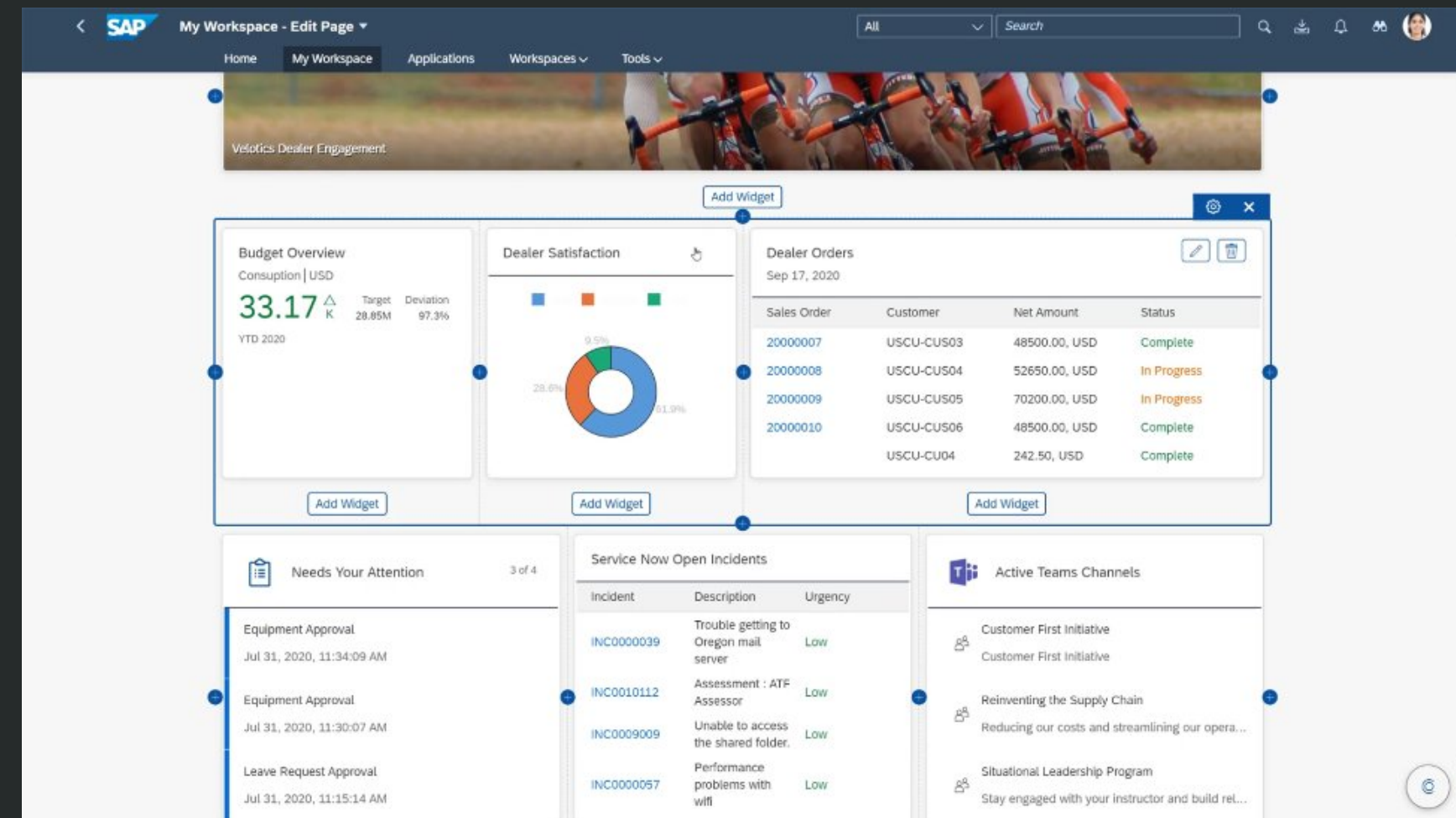
Workzone helps address multiple challenges common to most organizations:

- 1- Difficulty in finding content
- 2- Heterogeneous systems landscape
- 3- Multichannel delivery

## The solution

SAP BTP Work Zone offers a **standardized** and **unified user experience**, based on the user's roles in the organization (personas). This translates into increased user adoption, filling gaps typically encountered in business processes scattered throughout your organization.

Workzone is the next evolution of the SAP Portal, which will end maintenance in 2027.



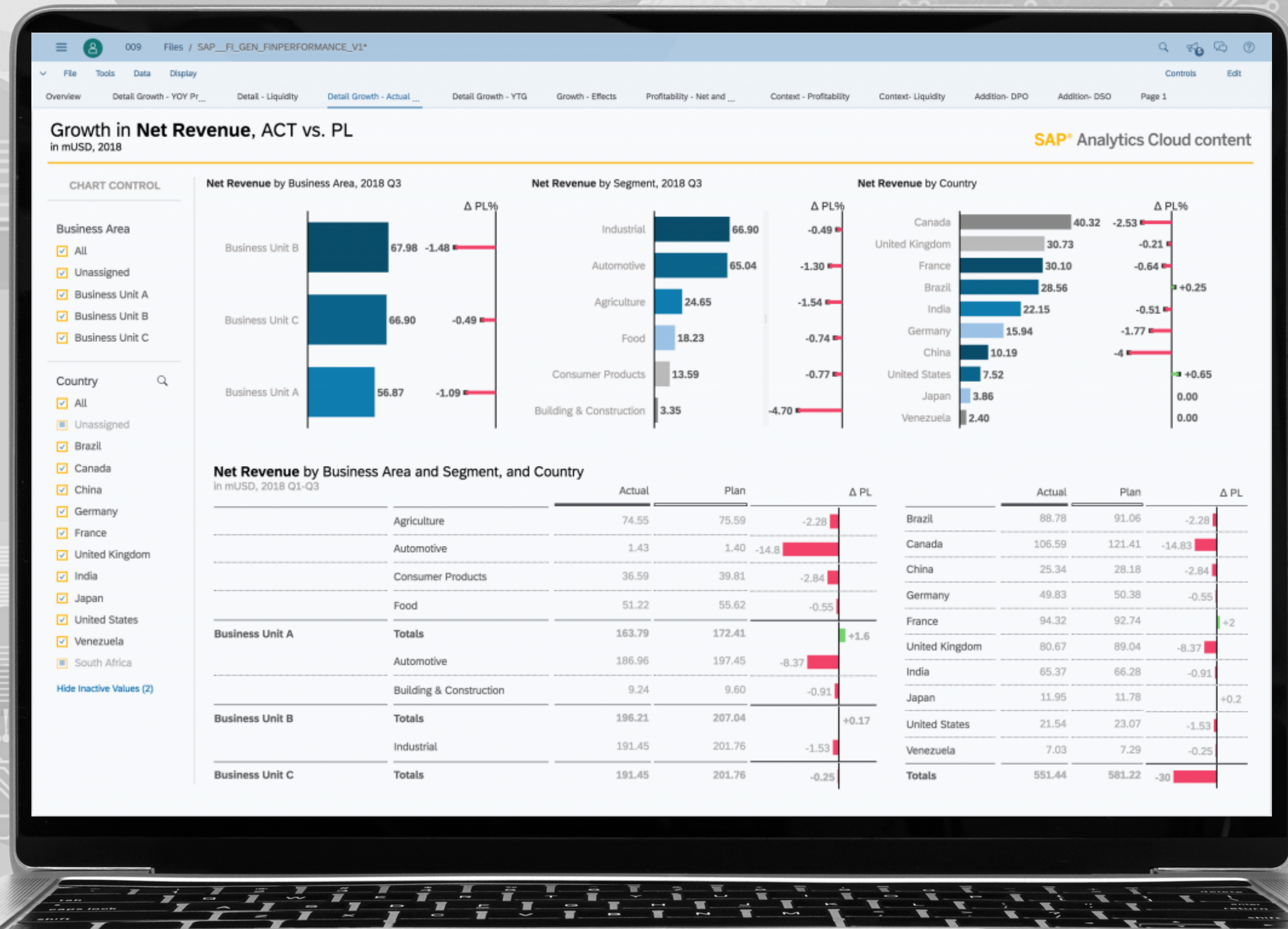
# SAC

## Highlights - Session 1

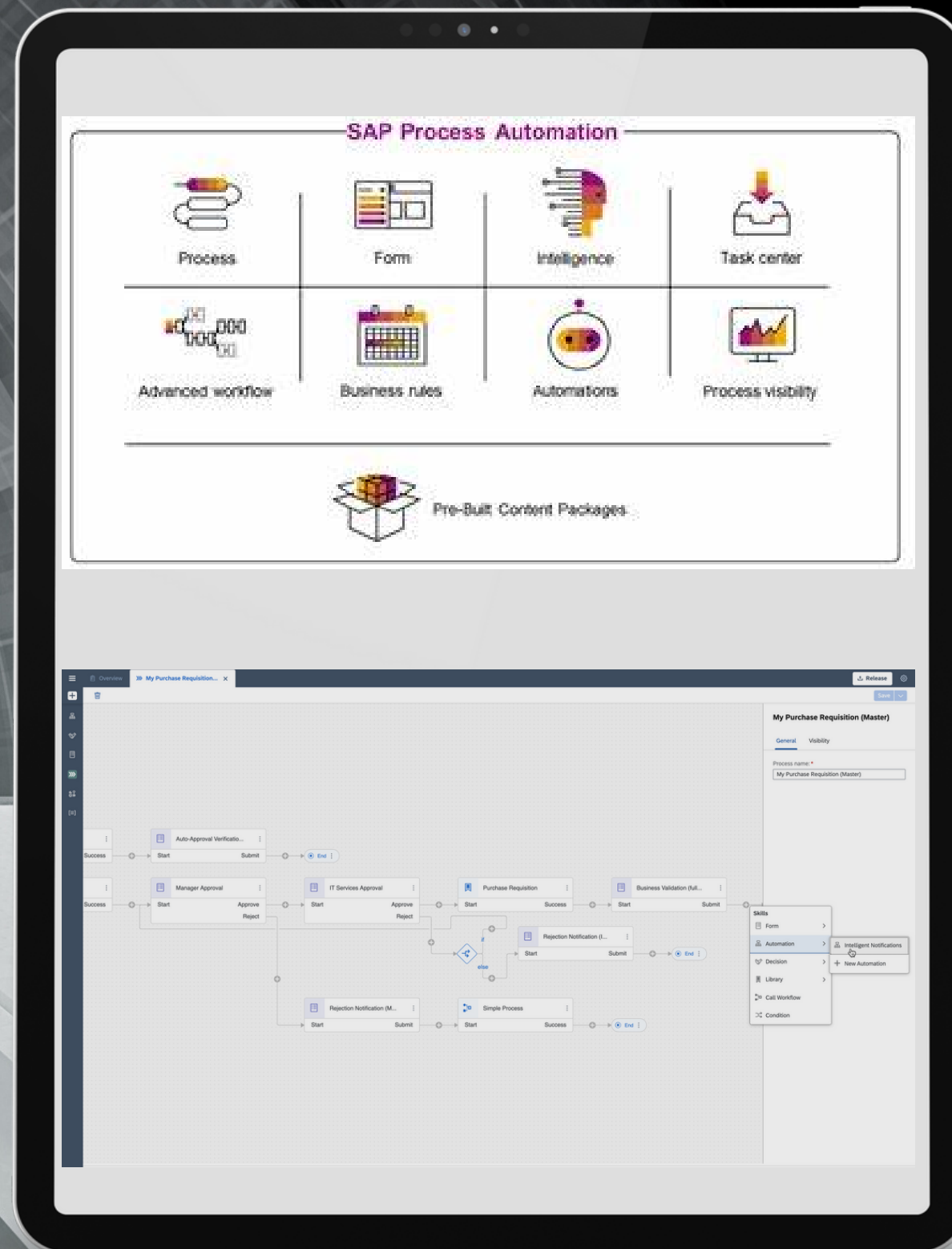
Session on "Unlocking the Value of SAP with Real Time Analytics and Planning". Learning on the "Data-to-Value Solutions" using SAP BTP

## Highlights - Session 2

Session on how SAP Analytics Cloud (SAC) enables organizations to predict AND act based on their business data. It leverages aggregated analytics data in a unified, intuitive interface.



# Process Automation




## Highlights - Session 1

SAP Process automation in BTP empowers line-of-business users (now called Citizen developers) to quickly develop their own forms and applications with embedded automation, leveraging the no-code/low-code concept

## Highlights - Session 2

You can build automation easily leveraging a simple graphical user interface, similar to building a process flow, and integrate any type of data source (ie Excel, PDF, etc)



# SAP BTP Application development - Rapid development - empower the Citizen developer

- AppGyver - Simplified development environment
- Drag and drop predefined content, fields, tasks, scanning, drop down list, etc
- Lots of connectors available (S/4 HANA, ECC, SF, Ariba, external systems, etc)
- Easily connect to all kind of data source (oData, ODBC, Excel, XML)
- BTP Marketplace available, find hundreds of readily available applications
- Easy deliver to multi-channel, ie mobile applications
- Simple securing functions and SSO - one click (Oauth, SAML, etc)
- Easily add workflows using Process Automation



**“Keep your core clean” is a simple but critical concept: move/keep your custom development out of your SAP core applications. This simplifies the maintenance and upgrade process**



## Classic Extensibility



**W**orkflow



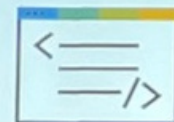
**R**eport



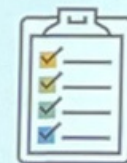
**I**nterface



**C**onversion



**E**nhancement



**F**orm

# Old ways...

# New ways...

## BTP as an Agile Application Development & Integration, Data Management Framework

RICEFW	Traditional Customization Use Cases	Enhanced Use cases	Solution Approach
<u>W</u> orkflow	Approvals / Decision Making	Flexible, Pre-delivered workflows & RPA's, with LCNC	BTP-SAP Process Automation (LCNC)
<u>R</u> eport	Operational reporting, adapt CDS views, Fiori dashboards	In-depth analytics, analytics with SAP and non-SAP data, historical reporting, planning with SAP/NON-SAP, etc.	BTP - SAP Analytics Cloud(SAC)/Planning, SAP Data Warehouse Cloud or Data Suite , Key-User Extension and SAC
<u>I</u> nterface	X	Pre-delivered Non-SAP, 3 <sup>rd</sup> Party, SAP Integrations, Event Triggers	BTP- API Hub, Integration Suite, Advanced Event Mesh
<u>C</u> onversion	X		Data Migration and/or Simplification conversion with BTP ABAP + Eclipse Plugin
<u>E</u> nhancements	User exits, BADIs, Append Structures	CDS View enhancements, API Extensions	BTP- Application Development & Automation Suite (BAS, LCNC) , BTP- ABAP Steampunk or Embedded, Key-User Extension
<u>F</u> orms	Output Management (ADS)		BTP – Forms, AppGyver, SAP Process Automation (LCNC), Work zone

**About**



# Who is

SDA is a firm offering technological solutions related to SAP. We act as a technical integrator on large-scale SAP projects. We specialize in Architecting and Orchestrating the BTP Solutions. All our consultants are certified, which allows us to maintain official partnership status with SAP.

- Offices in Montreal and Toronto
- Founded in 2003

Our scope of intervention:

- SAP BTP
- SAP Cloud Solutions
- Deploying SAP S/4 HANA in Greenfield, Brownfield, and Bluefield models
- Technology architecture and blueprint
- Hyperscaler migration
- SAP security, including SAP ETD





How we can help  
with **BTP**

# Our Value Proposition for SAP BTP

## Prepare Roadmap

- Workshops based on your BTP vision
- Share best practices and experience
- Based on the outcome of the workshops, prepare a Roadmap with the help of the client

## High-Level Architecture

- Clear vision of your target BTP Technology architecture
- Select the right Service for your business needs
- Input on how to Size your platform
- Input on how to setup the security

## Starter Pack

- Creation of your BTP sub-accounts
- Basic integration to Identity Provider for user authentication
- Activate the BTP services according to your solution architecture

## Deploy & Optimization

- Prepare technical blueprint
- Enablement of BTP services according to the detailed blueprint
- Assessment of existing BTP services based on usage, provide recommendations
- Documentation and knowledge transfer to your SAP COE



# Conclusion

# Recap / To retain....

- SAP BTP is a must in the evolution of your SAP platform
- PaaS Solution
- Centralized management
- Much easier to deploy and maintain
- SDA is here to help....



**Questions?**