



SMART SAP TESTING

How to orchestrate and streamline
Enterprise SAP Testing with Panaya



Raja Pothapragada
Customer Success
Manager



Joel Morffi
Strategic Account
Manager



○ Panaya

Smart SAP Testing

- › Enterprise/ERP Testing Challenges
- › What is Smart Testing?
- › Smart Testing in action:
 - › Optimization of functional regression tests
 - › Acceleration of Business process testing & UAT
 - › Automatic test documentation
 - › Smart Defect Management
- › Panaya Test Dynamix
- › Q&A

AGENDA 



THE CHALLENGES OF ENTERPRISE TESTING

Keep pace with **Agile & DevOps** increasing release cadence

Secure business process integrity with faster business innovation

User Acceptance Tests increasingly complex while remaining manual

Manual Processes
Slowing down collaboration and decision-making

Uncertainty
about change impact and testing coverage

Siloed Teams
and multiple tools reducing visibility into quality and risk



ERP TESTING IS MORE THAN “SOFTWARE TESTING”

- › ERP is **all about business**. Any disruption to business continuity is unacceptable.
- › Business processes can be cross-modules and have **multiple dependencies**.
- › **ERPs are increasingly integrated** with other applications.
- › ERP testing requires a **strong understanding of business processes**.
- › **Functional analysts and business users** are essential for ERP testing.
- › Managing tests across multiple teams requires an **end-to-end visibility**.



SMART TESTING

Increased complexity of end-to-end testing requires to **rethink testing** to accelerate digital transformation.

Test modernization cannot be achieved with legacy and outdated methodologies.

Quality at speed requires testing excellence and goes far beyond test automation only.

Bring intelligence to testing is our formula to drive innovation with no risk.



PANAYA'S SMART TEST MANAGEMENT

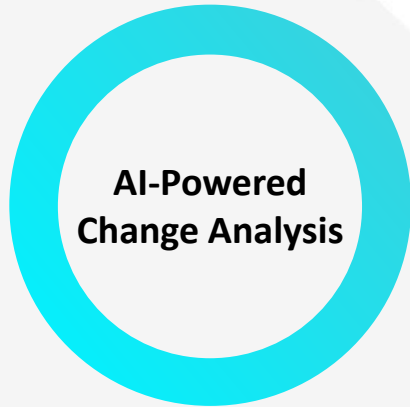
An enterprise unified end-to-end testing platform that brings intelligence to traditional test management with:



Data from the SAP System



Data specific to your SAP system, ensuring better informed decisions



AI-Powered Change Analysis



NextGen SAP Impact Analysis engine for a risk-based testing approach to your ongoing changes



Smart Defect Management



Smart defect management so you can anticipate and control defects inflation



Collaborative Testing



Boost UAT with a unique collaborative approach and automate documentation



Proactive Insights



Ongoing insights to remove planning and execution bottlenecks





TESTING CYCLES

Still the king of
ERP testing!

What are the common ERP
regression testing
practices/challenges?

Running a full
regression on
ALL business
processes

Change risk is
determined by
local experts' gut
feeling

Regression
cycles are
avoided in small
and non-critical
changes

REGRESSION AND FUNCTIONAL TEST PLANNING CHALLENGES

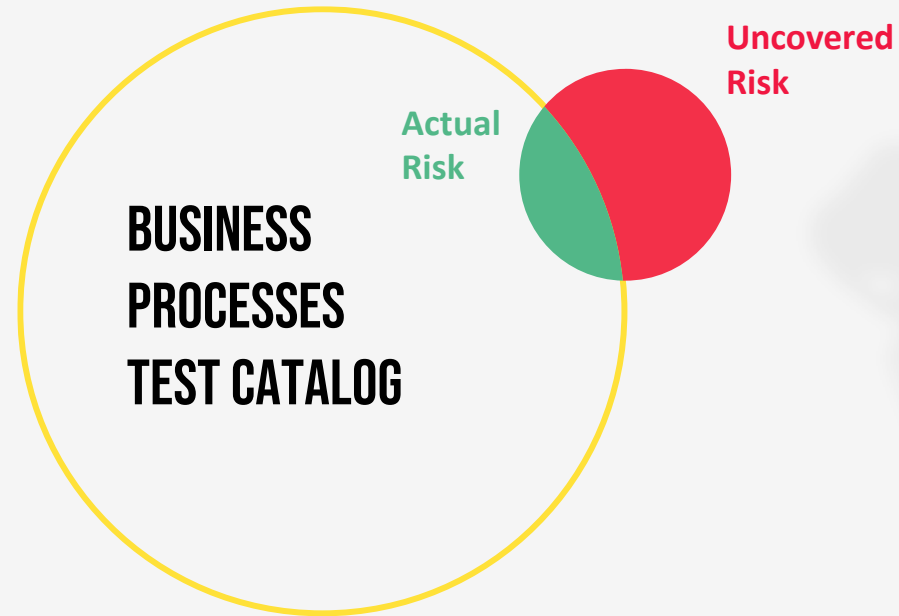
Are you testing **too much?**

—

Are you testing **too little?**

—

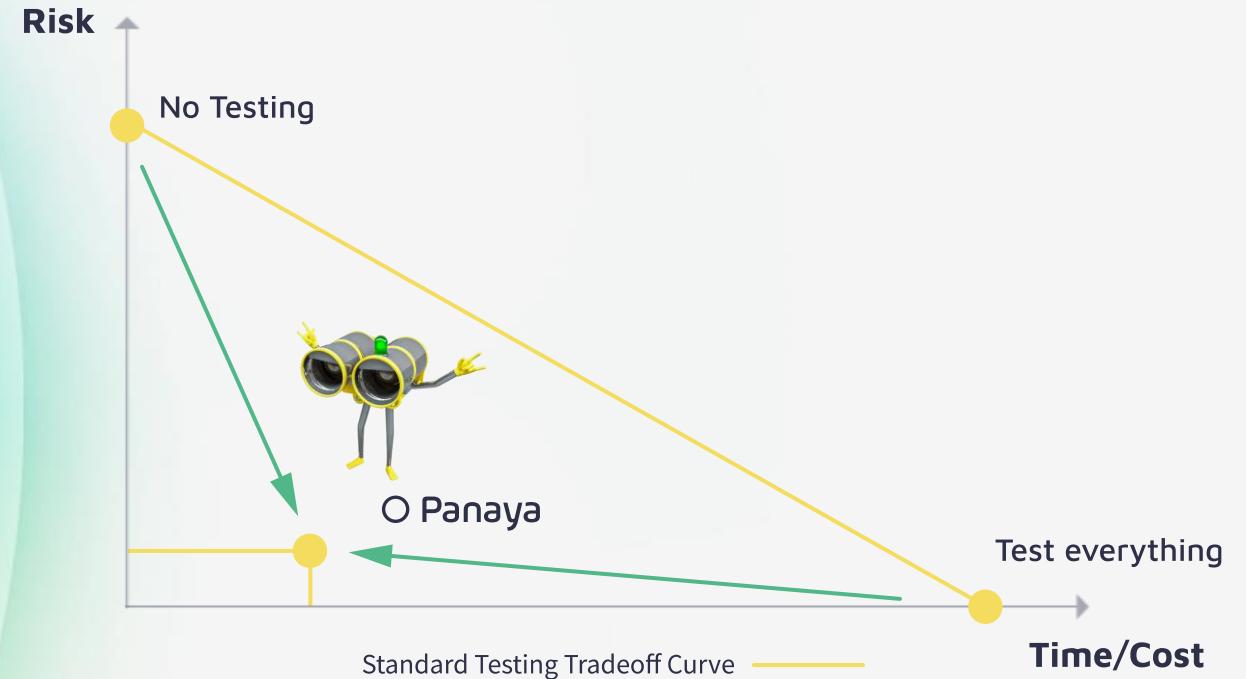
Are you **covering all** impacted business processes?



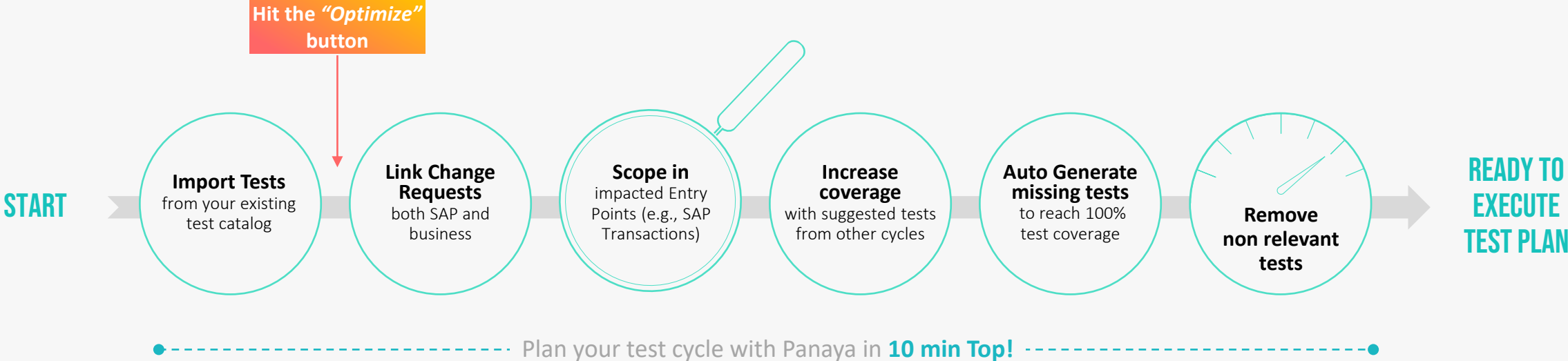
Panaya's Change Analysis:

Smart AI-Driven Regression Testing

- › Reduce regression testing efforts by focusing only on the impacted areas.
- › Increase test coverage with auto-generated tests.
- › Pinpoint the impact of changes on your current business processes.
- › Optimize manual and automated test cycles.



PANAYA CHANGE ANALYSIS



Change Coverage



Covering Tests



BUSINESS PROCESS TESTING CHALLENGES

Traditional tools and methodologies are not suited for functional analysts and business users

—
Limited ability to capture business process knowledge

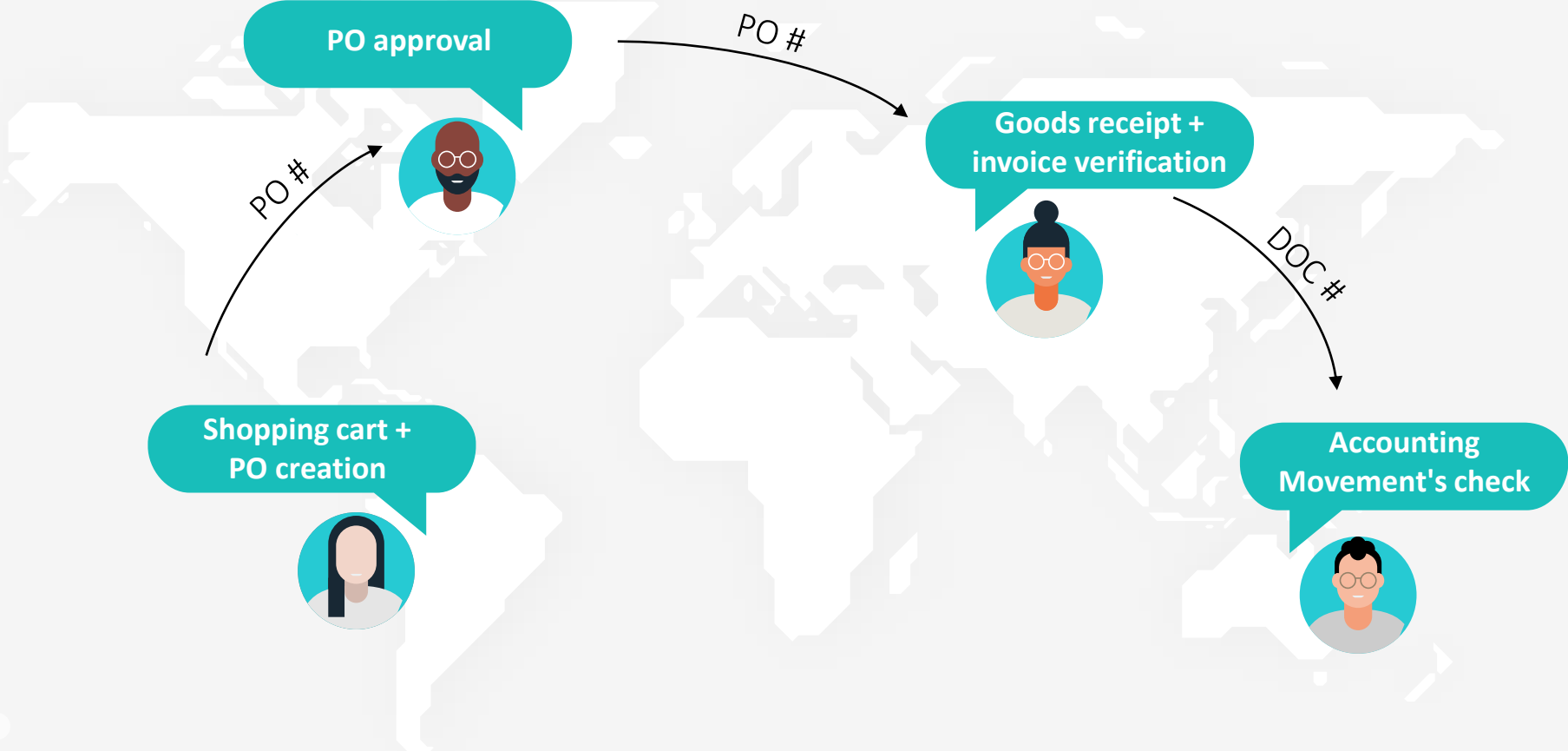
—
Lack of end-to-end business process visibility

—
Idle time between sequential testing activities

—
Inability to track testing quality and accuracy


Testing focus and investment should shift from traditional technical testing to include cross-functional, business process testing

COLLABORATIVE BUSINESS PROCESS TESTING



Smart Business Process Testing

- › Tests reflecting **end-to-end business process sequence**.
- › **Easily engage business users** with intuitive interface.
- › **Seamless remote collaboration**: “Pass the baton” within complex business scenarios that involves cross-functional teams.
- › **Boost testing efficiency**: Testers know when to test, what to test, what data to use.



Panaya | Tests assigned to you.
Hello Jenny Jane,
It's your turn to take part in testing!
[Go to step](#)
Step #3 'Plan and Prepare Production'
Expected results: Production Order number

TEST 1132 | SAL51 - 02 - CC Sales (MTO) via Manufacturing Site IN PROGRESS | Actions Save

Ready to test Progress:

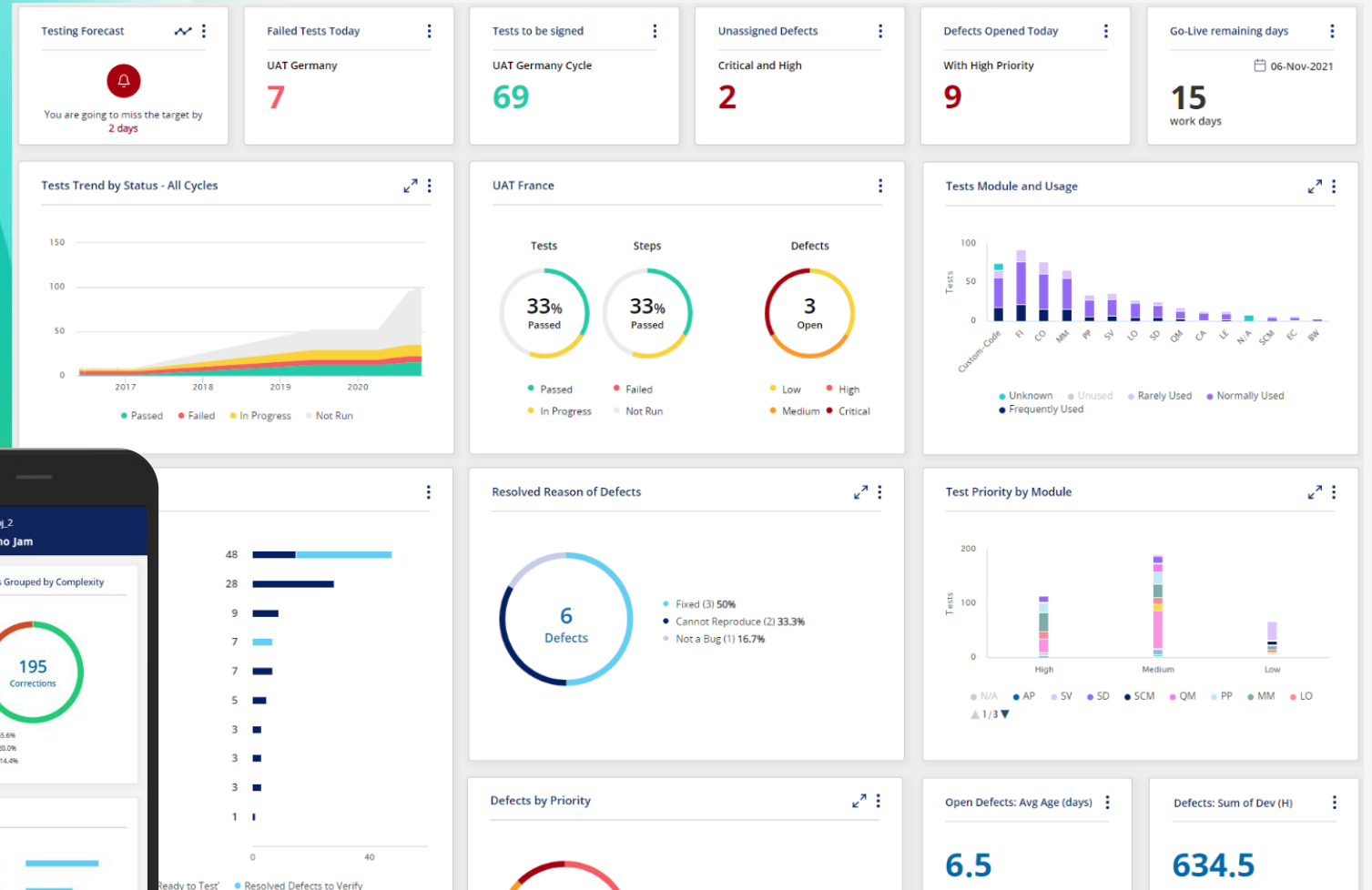
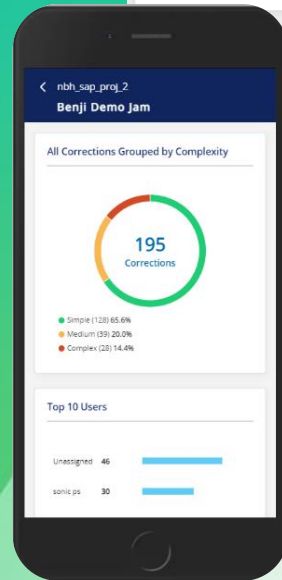
General Steps (15) Data Linked requirements (0) Defects (0) Attachments (0) Comments (0) History (2)

View Step Run Manual Run Show Evidence Report Defect N/A

| REAC # | DESCRIPTION | STATUS | TRANSACTION | MODULE | TEAM | EXPECTED RESULTS | TESTER | TESTED BY |
|--------|------------------------------|---------|--------------------|--------|---------------------|--------------------|----------------|--------------|
| 1 | Create Sales Order | PASSED | VA01 | SD | Sales - Order | Sales Order # | James Deen | James Deen |
| 2 | Release from Credit Hold | PASSED | VKM3 | SD | Finance - Credit | | Liam Neelson | Liam Neelson |
| 3 | Plan & Prepare Production | NOT RUN | MD04, CO40 | | Manufacturing - MRP | Production Order # | Jenny Jane | |
| 4 | Execute & Confirm Production | NOT RUN | MIGO_GI, CO15, ... | | Manufacturing - MRP | | Jenny Jane | |
| 5 | Confirm Sales Order | NOT RUN | VA02 | SD | FEL - Delivery | | Thomas Bert | |
| 6 | Schedule Delivery | NOT RUN | VL01N | LE | FEL - Delivery | Delivery # | Thomas Bert | |
| 7 | Picking & Packing | NOT RUN | VL02N | LE | FEL - Delivery | GI # | Thomas Bert | |
| 8 | Create & Review Invoice | NOT RUN | VF01, VF03 | | Sales - Invoicing | Invoice # | Sheldon Cooper | |
| 9 | Create & Review | NOT RUN | ZZIVAUF, | | Sales - | Invoice # | Sheldon Cooper | |

Real-Time Custom Dashboards for smart decisions

- › **Real-time visibility** with fully customizable and shareable dashboards.
- › Remove testing bottlenecks with **smart alerts and insights**.
- › **Never miss updates** and manage on the go via our dedicated mobile app.

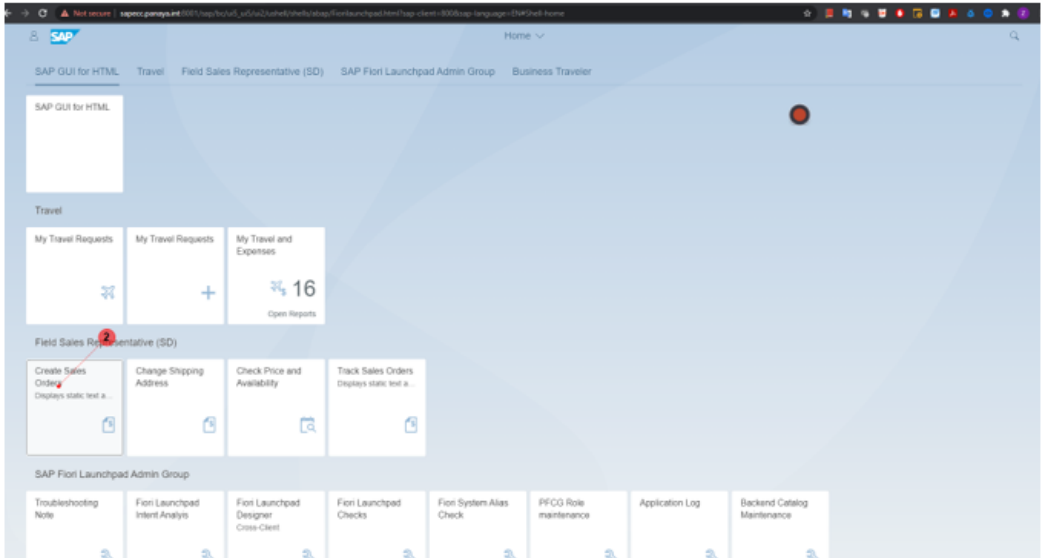


Automatic Test Evidence

- › Save 100% of documentation efforts
- › Stay compliant with auto-generated and audit-ready test evidence.
- › Exhaustive business process test library reusable across projects and test cycles.
- › Train users with ready-to-use documentation.



- » Test ID 1993
- » Test Sales Order creation
- » Step 1 Create Sales Order
- » Step status Passed
- » Transaction Sales Order Creation FIORI App
- » Tested by John Doe
- » Tested on 30-Jun-2021 07:52 (GMT)
- » Duration 00:00:39
- » Actual results All good
- » Comments

| No. | Step Description |
|-----|---|
| 1 | <p>Activity</p> <p>Scenario recorded on 30-Jun-2021 07:52:09 (GMT) by John Doe. Generated by Panaya</p> <ul style="list-style-type: none">• Go to: "https://sapecc.panaya.int:8001/sap/bc/ui5_ui5/ui2/ushell/shells/abap/Fiorilaunchpad.html" (1)• Click on "Create Sales Orders" Tile (2)  |

SMART DEFECT MANAGEMENT

- › The nature of ERP business processes is being integrated
- › Many transactions are used in various different business processes
- › One defect in one transaction can stop many other steps/tests
- › Testing of transactions with reported defects cause:
 - Defect duplication
 - Time/cost loss
 - Testers/developers bureaucracy
- › Panaya System Wide Defects is an AI-driven capability that assists test managers to define influence of defects on other tests:
 - Save time
 - Save money
 - Save frustration



Run Step

STEP 2 - CREATE SALES ORDER (VA01)

SYSTEM-WIDE DEFECT ALERT X

A defect is currently opened on transaction VA01 (master data problem): [Defect 2652](#)

Do not run this step until you receive an automatic notification of resolution.

OK

Smart Defect Management

- › **Full collaboration** between testers and developers.
- › **Speed up defect resolution** with automatic documentation, screenshots and reproducible steps for developers.
- › **Close defects loops and secure retesting** with automatic workflows.
- › **Control defect inflation** with Panaya's System Wide-Defects.

The screenshot displays a defect management interface for a defect titled "DETECT 94 | Problem with Storage location". The interface includes a navigation bar with tabs for "General", "Steps To Reproduce", "Influence (4)", "Features (0)", "Attachments (0)", "Comments (0)", and "History (7)".

The main content area is divided into sections:

- DESCRIPTION:** A rich text editor with a toolbar and the text "Code 0001 is not sending the right value."
- DETECTION:** A table of defect details:

| | |
|------------------|--|
| * Priority | High |
| Found in release | 22.04 (FF 17-Mar) |
| Cycle | SAP GUI HTML (Benj March 20... |
| Test | Purchase to Pay ↗ ↘ |
| Step | 1. Create Purchase Order ↗ ↘ |
| Transaction | ME21N |
| Blocking | Yes |
- SCREENSHOT:** A placeholder for a screenshot of the defect.
- CREATION:** Metadata including "Detected by: Benjamin Alimi" and "Detected on: 30-Nov-2021".
- OWNERSHIP:** Metadata including "Dev owner: SivaSankar Murugesan" and "QA Owner: Ester Liberman".

A callout box titled "SAP Portal - Create Purchase Order" highlights the "ACTIVITY" section, listing the following steps:

- Enter "1000" in the "Purchasing Org." field (1)
- Enter "100" in the "Purch. Group" field (2)
- Enter "1000" in the "Company Code" field (1)
- Press Return (2)

At the bottom right, there are "Save" and "Cancel" buttons.

Automation Rules for custom workflows

- Event-driven workflows to **accelerate project management** by removing manual and repetitive actions.
- **Ease decision making** by automatically updating fields.
- **Reduce project's risks** by automatically assigning important issues.
- Increase the **overall efficiency and quality** of processes with best practices and accurate data



When **Feature Status** is changed to **Ready to Test**
And **Testing Owner** is **empty**
Update **Testing Owner** to **Henri Fried**



When **Test** is created
And **Module** is **MM**
Update **Business Owner** to **Enrique Artes**



When **Defect Priority** is changed to **Critical**
Update **Due Date** to **Tomorrow**
And **Send an email** to **Dev Manager**

Create Rule

DEFINITION

1 Define the trigger Defect Updated

2 Define the condition Priority Changed To Equals Critical
[+ Add Condition](#)

3 Define the action Send Mail To Dev Owner x QA Owner x Benjamin Alimi x

Subject: [Project Name] - Notification about [Entity Type] [ID] +

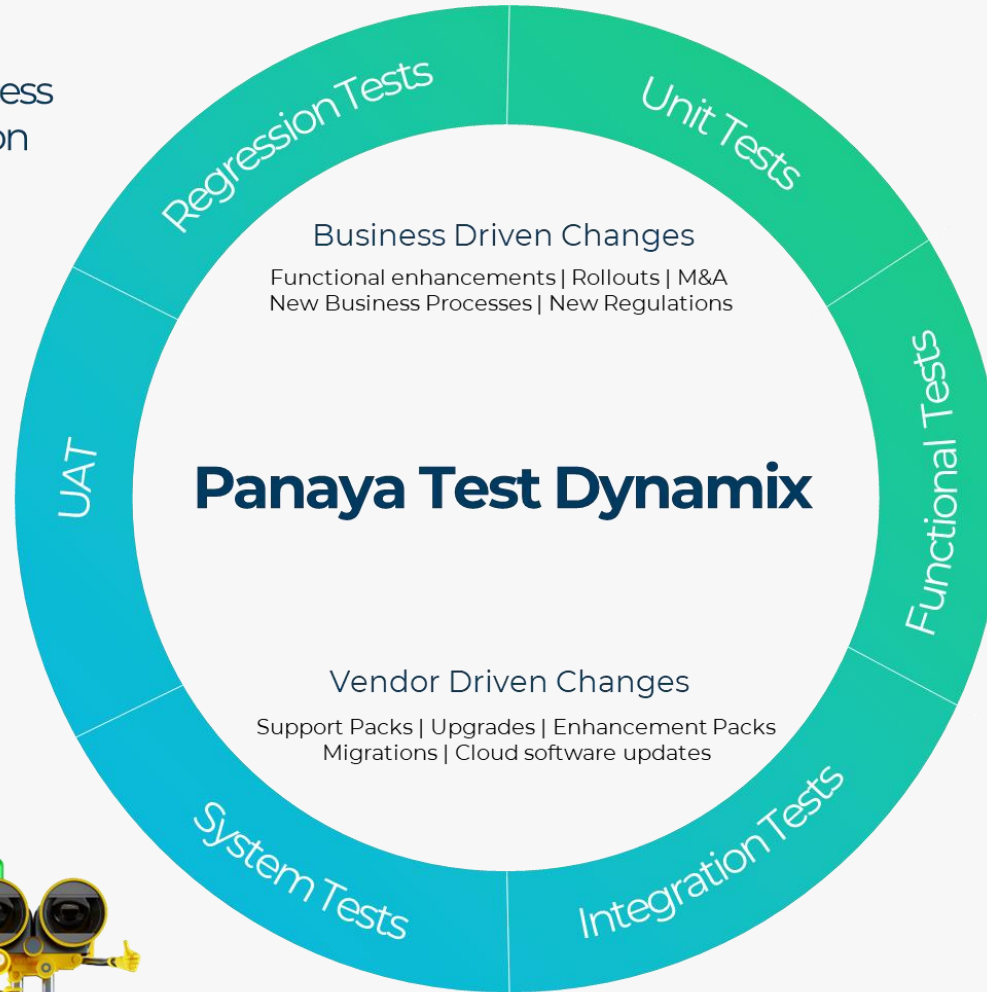
13px Paragra... B U I S X² A A [Icons]

Hi,
Please have a look to [Entity Type] [ID] that was changed to **Critical**
This mail was sent to you based on an automated rule. +

[+ Add Action](#)

SMART TEST MANAGEMENT FOR ERP AND BUSINESS APPLICATIONS

- Intuitive Business Process Planning and Execution
- Automatic Test Documentation
- Best Practices Test Library
- Risk-Based Testing
- Requirements Traceability



- Smart Defect management
- Real-Time Custom Dashboards
- Test Automation Orchestration
- Automated Workflows
- Enterprise Compliance and e-signatures



100% SAAS