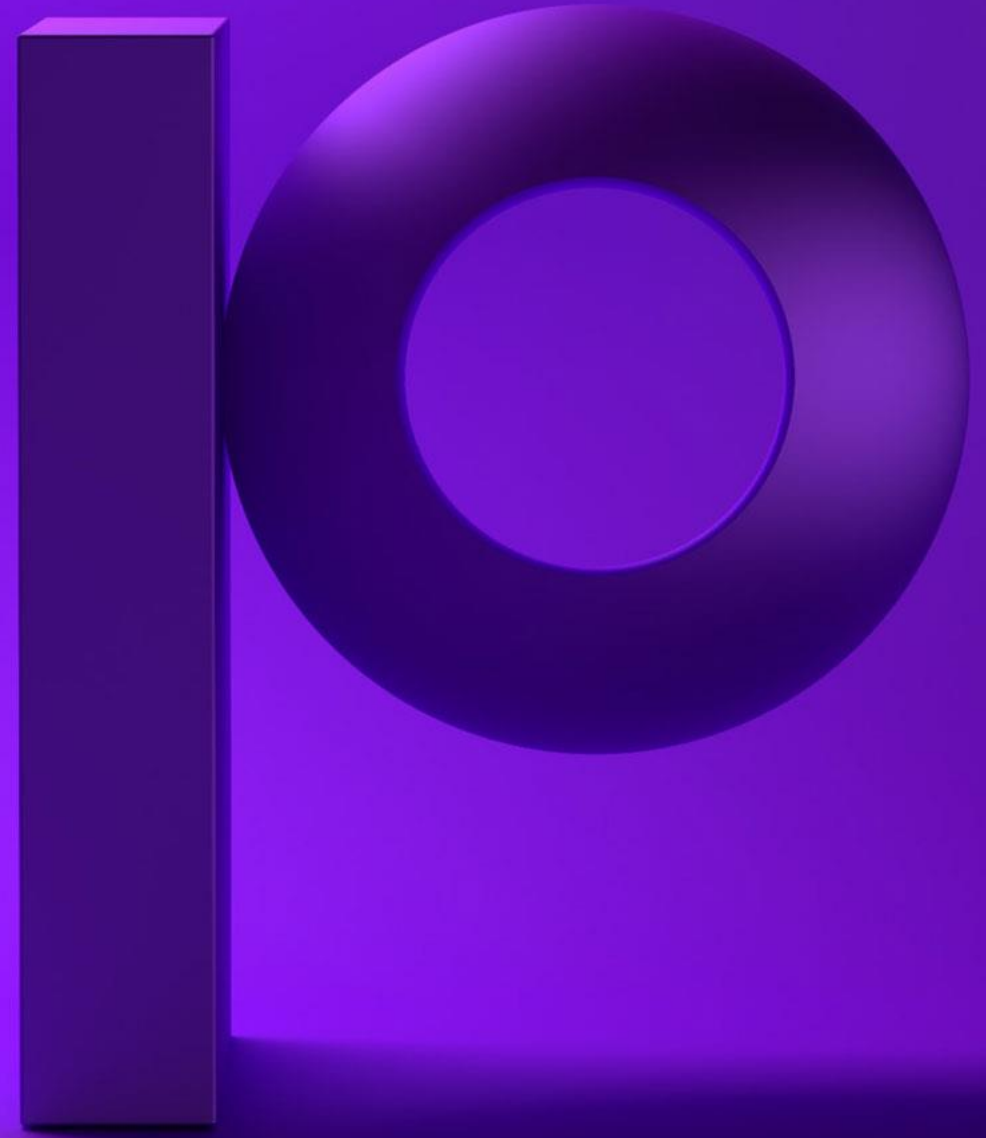


precisely

Automating SAP® Fiori processes

Sigrid Kok, Principal Sales Engineer, Precisely

December 8, 2022



Winshuttle is now
part of Precisely,
the leader in
data integrity

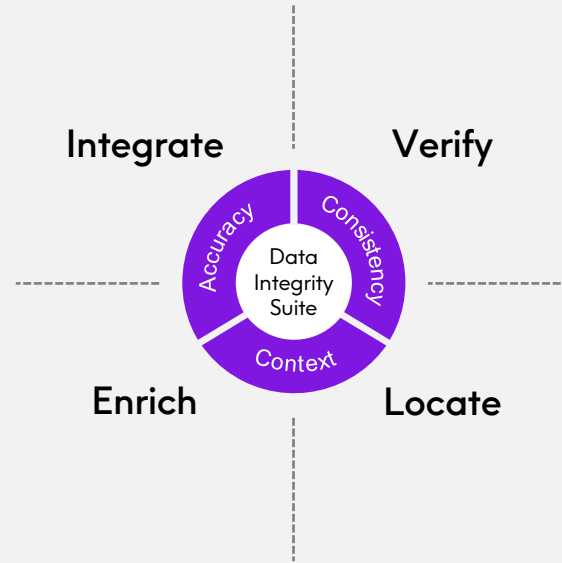
The logo for Precisely features the word "precisely" in a white, lowercase, sans-serif font. The letter "p" is stylized with a vertical bar extending downwards. The letter "i" has a solid dot. The letter "o" is a large, 3D-rendered ring with a dark purple gradient and a shadow on the surface below it. The letters "r", "e", "c", "i", "s", "e", and "l" are in a standard white font. The "y" has a long, thin tail that extends downwards. The entire logo is set against a dark purple background with a subtle gradient.

precisely



The global leader in data integrity software

Our data integrity software, data enrichment products, and strategic services deliver accuracy, consistency, and context to power confident business decisions.



Brands you trust, trust us



Data leaders partner with us



12,000

customers

Customers in more than
100 countries

99

of the Fortune 100

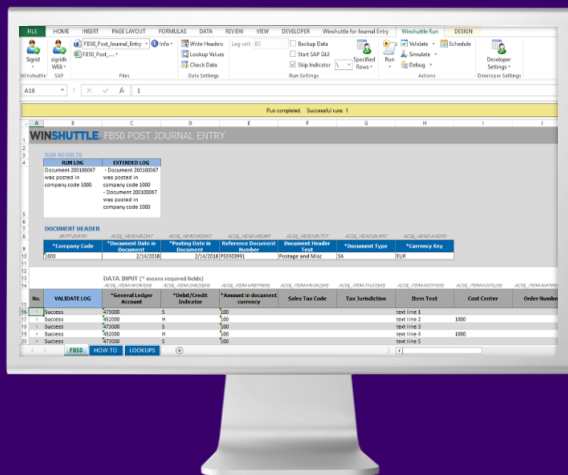
2,300
employees

Current SAP Automation Options

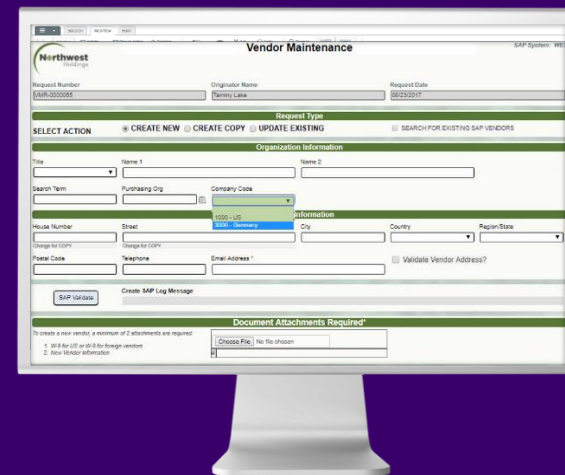
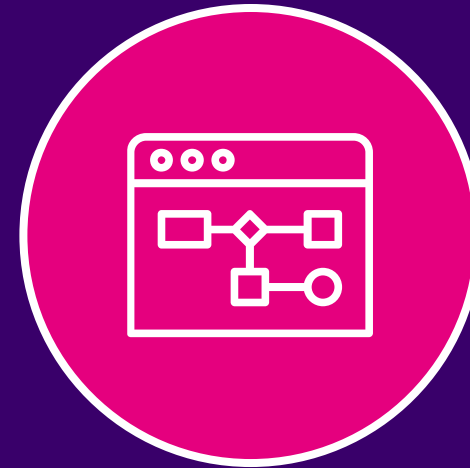


What We Do for SAP

Data Management



Process Automation



Precisely Automate portfolio

Automate Studio

STANDALONE

Exchange data with SAP quickly and easily using Excel

- Data creation and maintenance
- Data migration
- Operational reporting
- Data stewardship

Business users work in Excel



Automate Studio Manager

GOVERNED

Share, manage, & control Precisely across the enterprise

- Basic 2-step workflow
- Centralized management
- Granular control of licenses, users & policies
- Extensive audit and ROI reporting
- Server-side job execution & scheduling

Business users work in Excel



Automate Evolve

WORKFLOW-ENABLED

Automate and streamline SAP processes using workflows

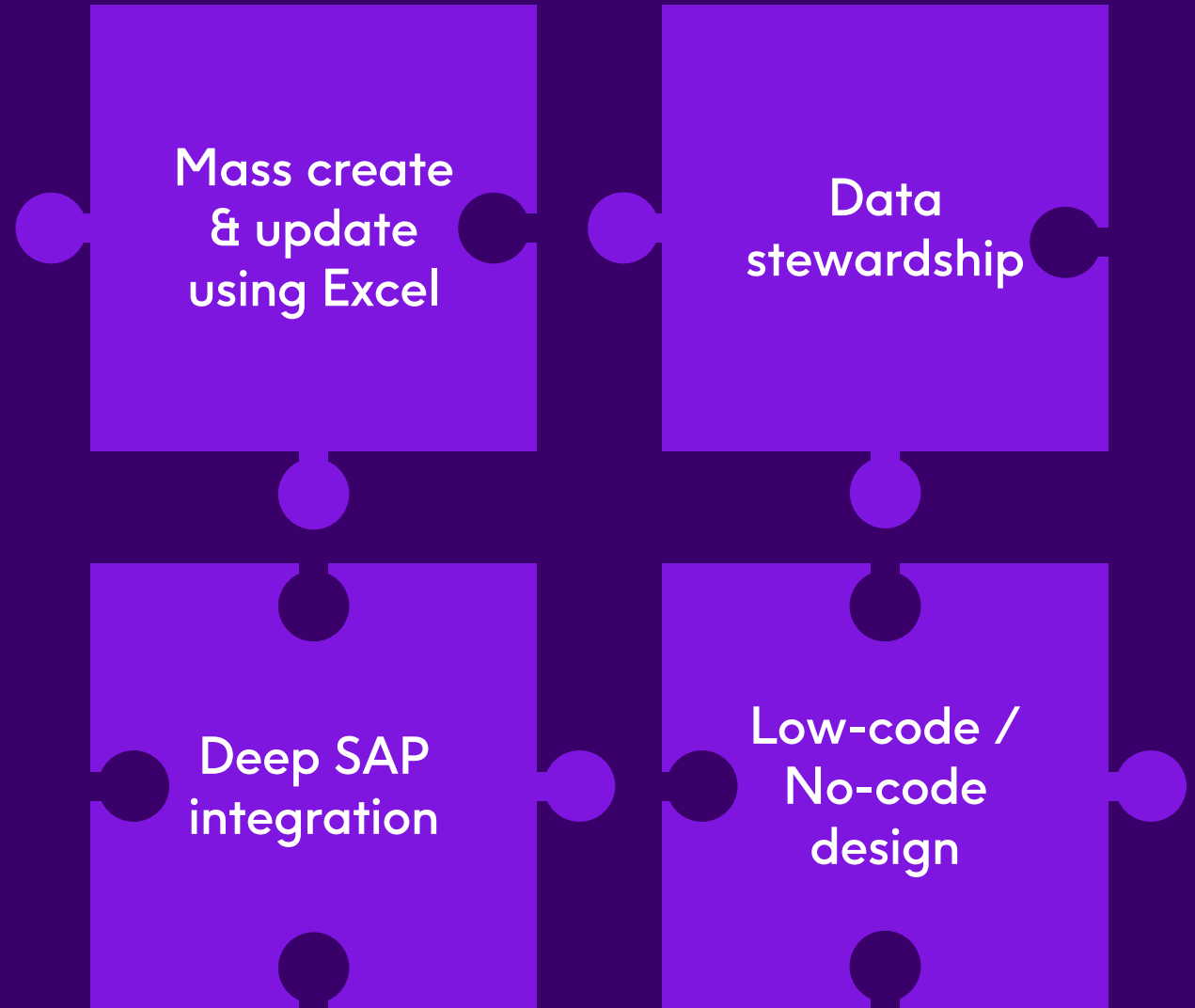
- Advanced form and workflow capabilities
- Advanced data stewardship capabilities via web forms
- Detailed process analytics

Business users work in Excel or web forms



Automate Studio

The right capabilities to get SAP work done faster and improve data quality.



What business users can do with Automate Studio



Automate
any SAP
business process



Streamline data
management and
migrations



Create
operational
reports

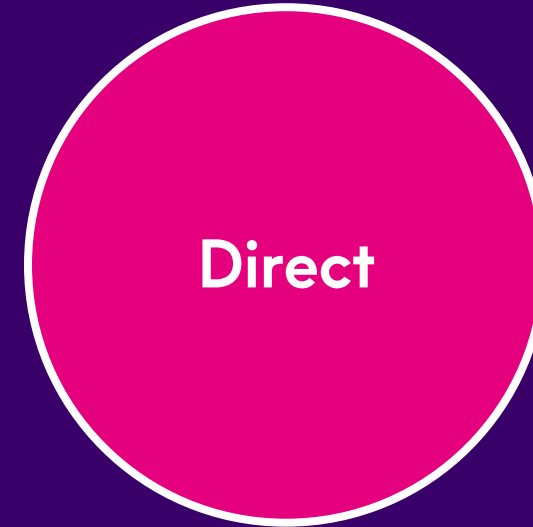
Automate Studio business author modules for Data Management



Fast, easy data uploads to SAP



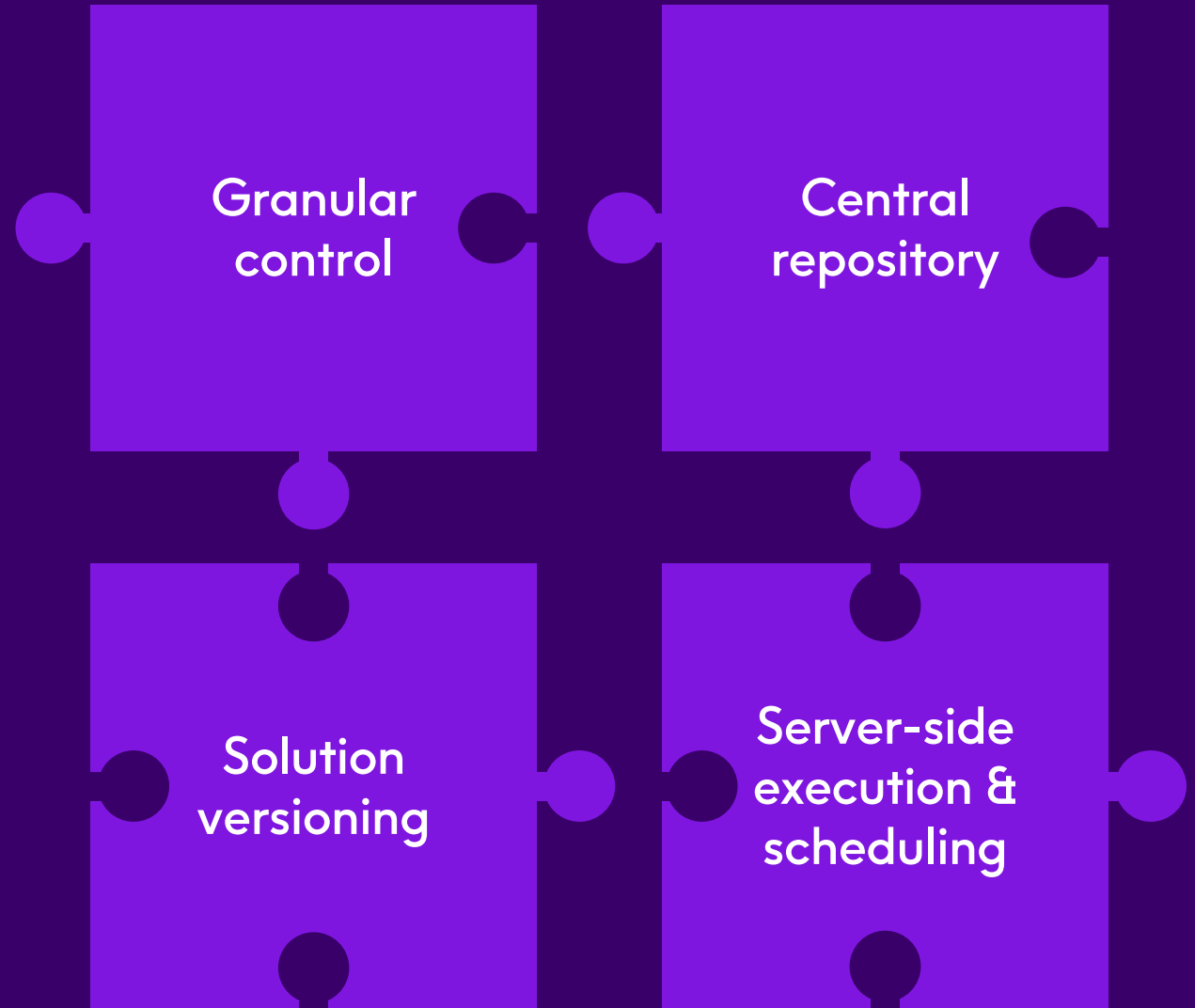
Easy, real-time SAP data extraction and reporting



Advanced solution builder using SAP BAPIs

Automate Studio Manager

SAP Data automation with granular control & server-side execution



Get granular control with Automate Studio Manager



Store and manage content centrally



Approve scripts prior to use



Assign and manage Precisely licenses



Track and report on KPIs



Enable approval step before data is posted



Run audit reports to meet compliance requirements



Set granular policies for data exchanges with SAP



Manage SAP and other data connections



Schedule and execute jobs from the server



Enforce governance through roles and capabilities management

Automate Evolve

The right combination of capabilities to automate data-intensive processes.

Enterprise-grade
workflow &
automation

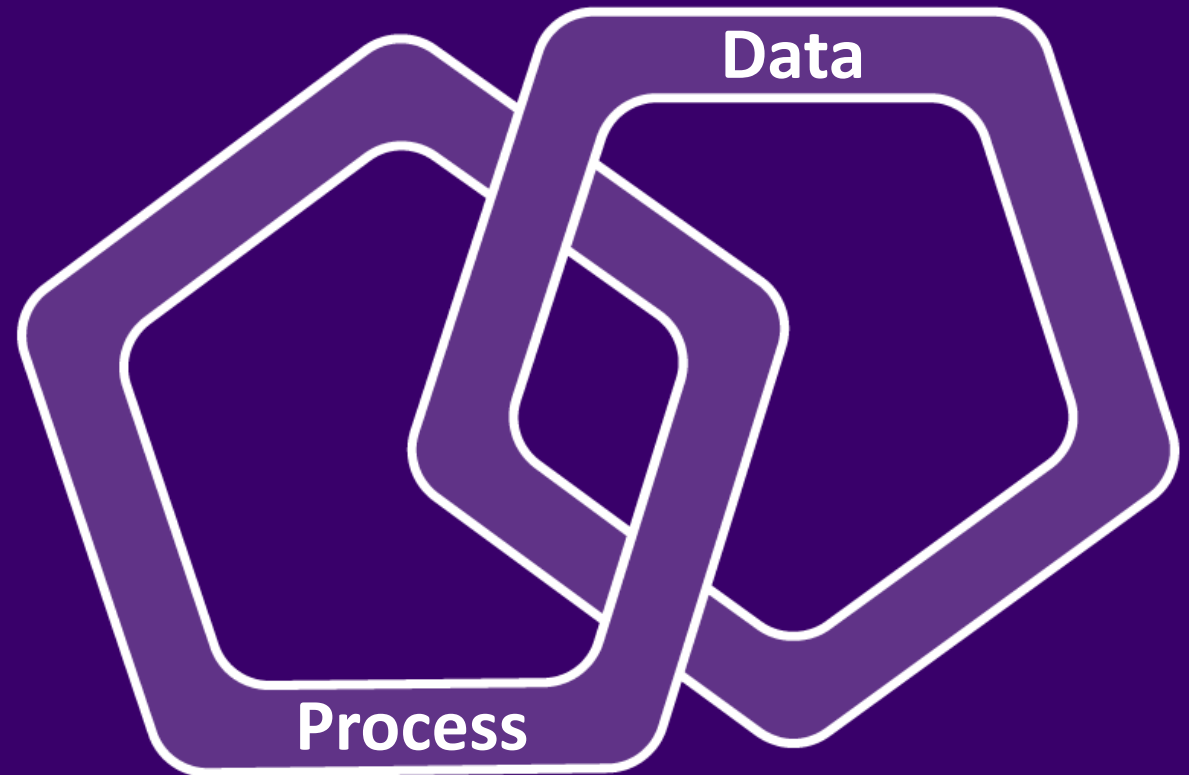
Robust data
Stewardship

Deep SAP
integration

Agile,
no-code,
low-code

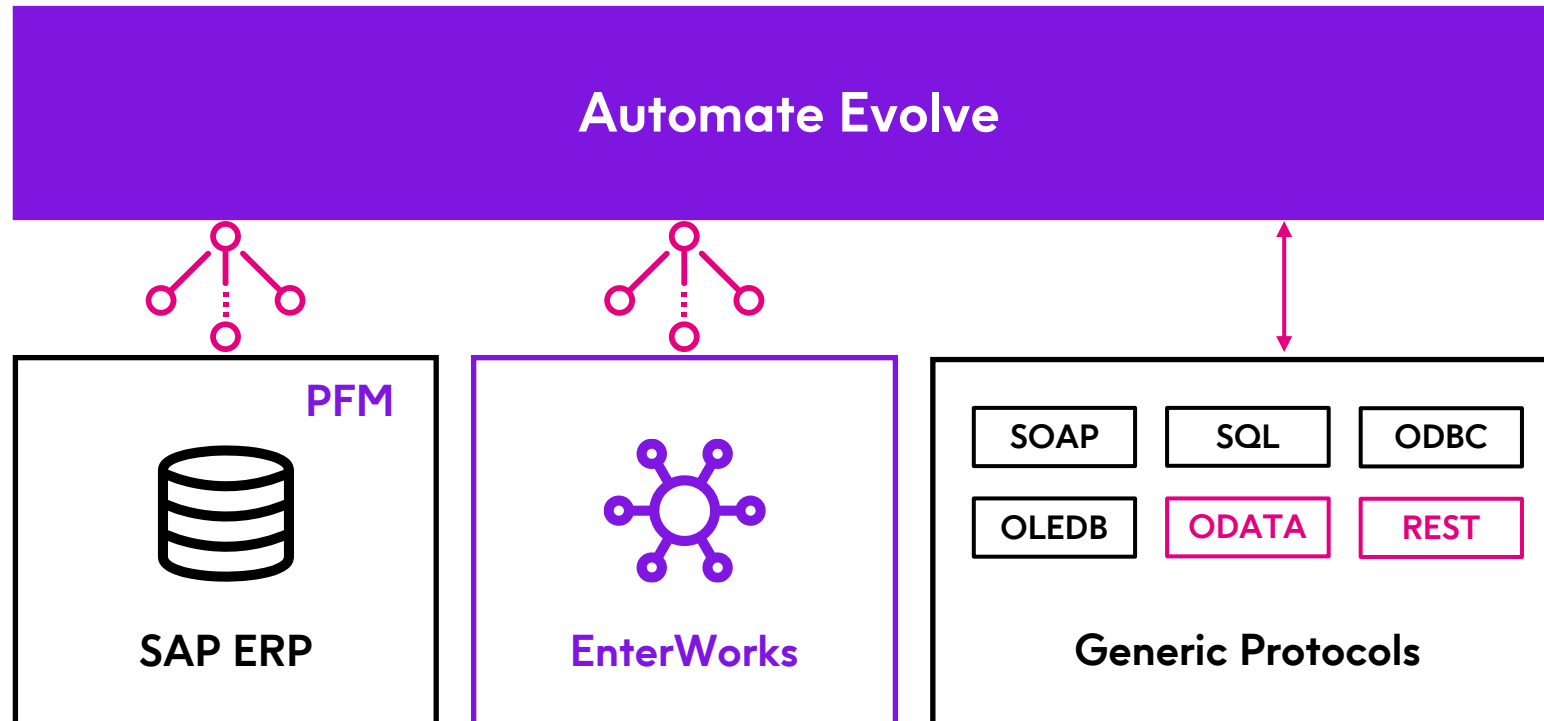
Tackle process and data together with Evolve

- Product launches
- Product data management
- Customer onboarding & management
- Vendor onboarding & management
- Asset management
- Financial master data and more...



Connecting to more systems of record

Third-party RESTful API support



Set of RESTful APIs for SAP data & process automation

SAP Data API

REST API that enables direct integration with SAP for scenarios that don't require data enrichment. Applies to Studio Manager and Evolve. Easy Inbox upgrade.

Digital Access API

REST based API that enables external software to kick start or update an Evolve workflow for users to contribute data before it is ultimately posted to SAP.

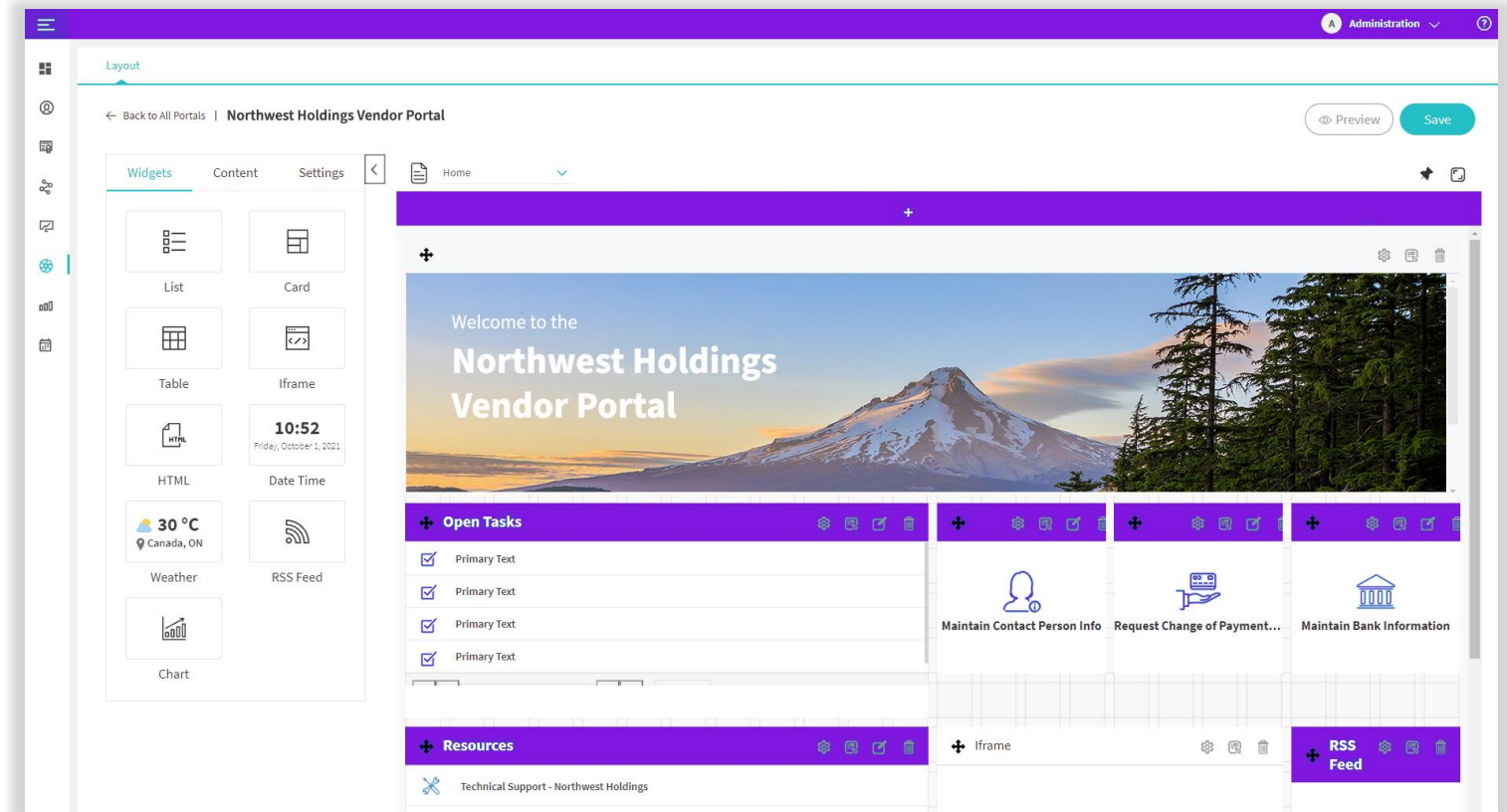
3rd-party API support

Connecting to other REST APIs that enables an Evolve process to connect to different system of records to process data, including OData.

Automate Evolve Portals

Secure internet access for your SAP data

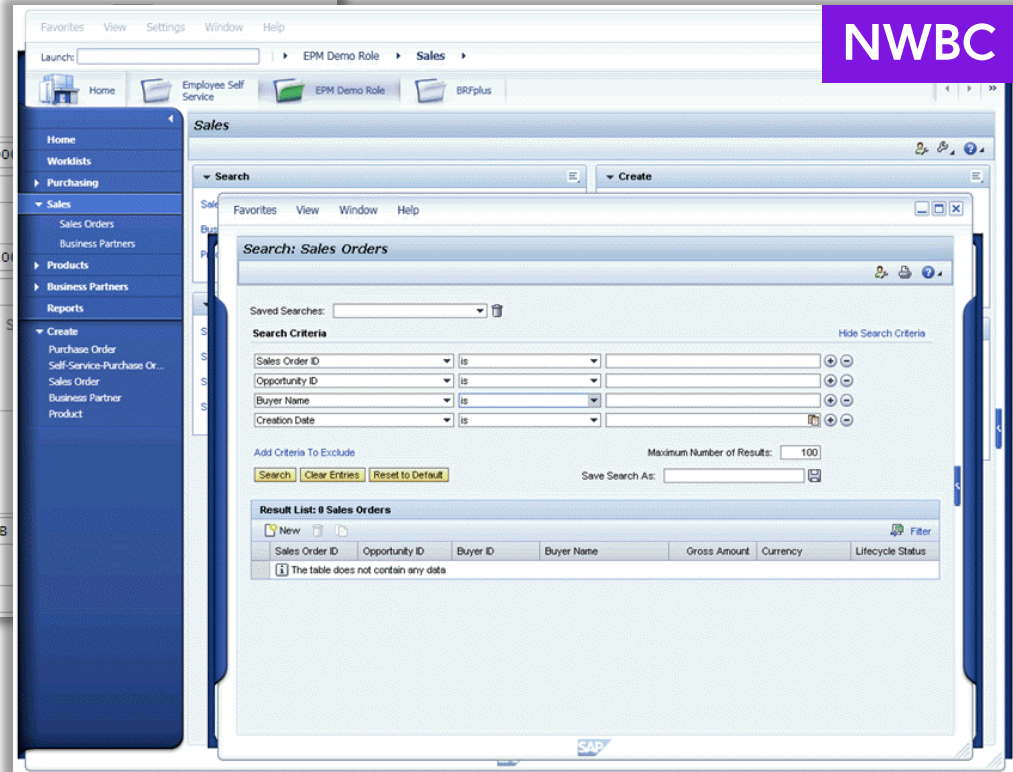
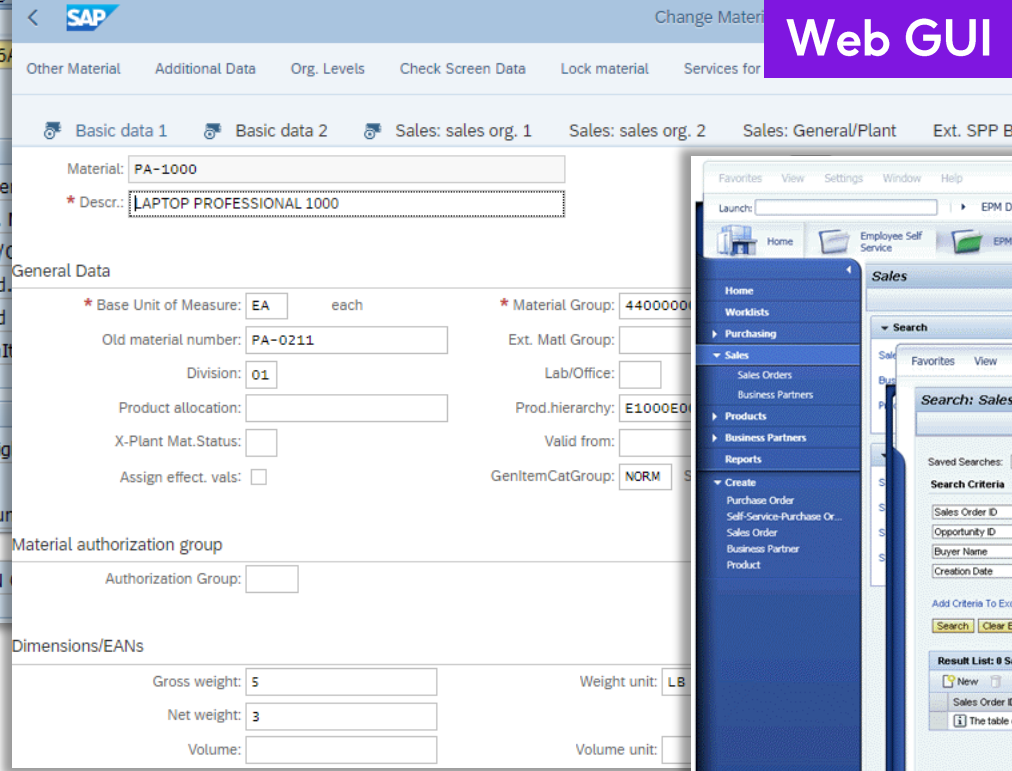
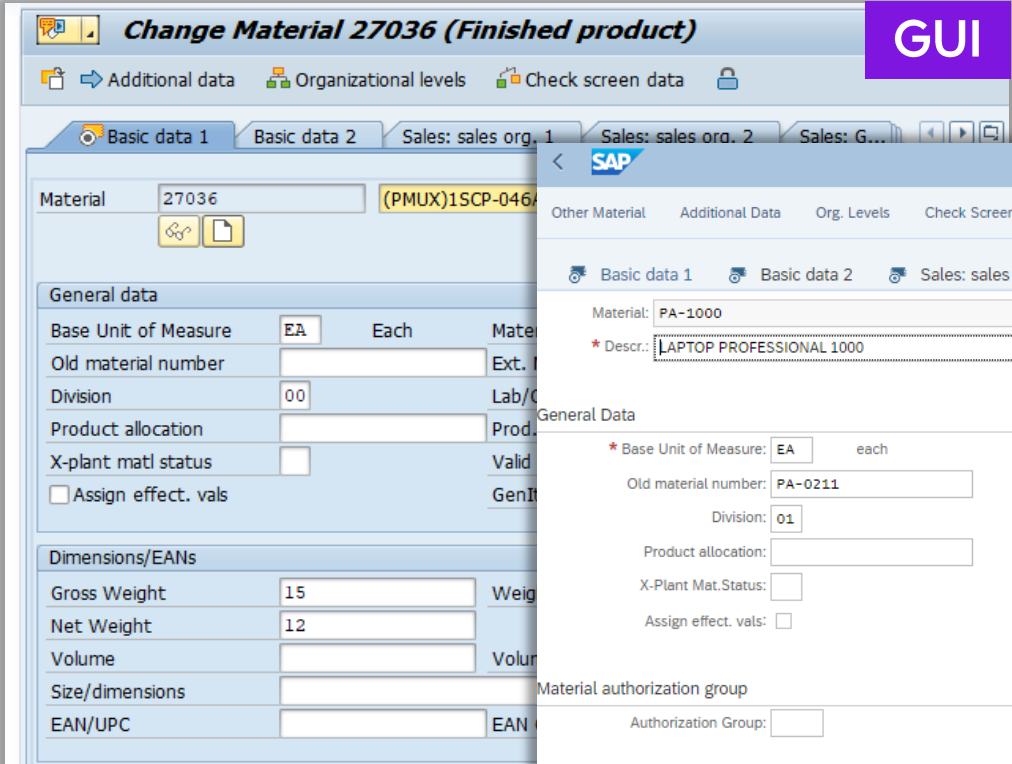
- Create custom portals for customer, vendor, partner and employee self-service data management
- Streamline master data processes
- Simplified portal development experience
- Internal portals for Winshuttle form users



New SAP Fiori Automation



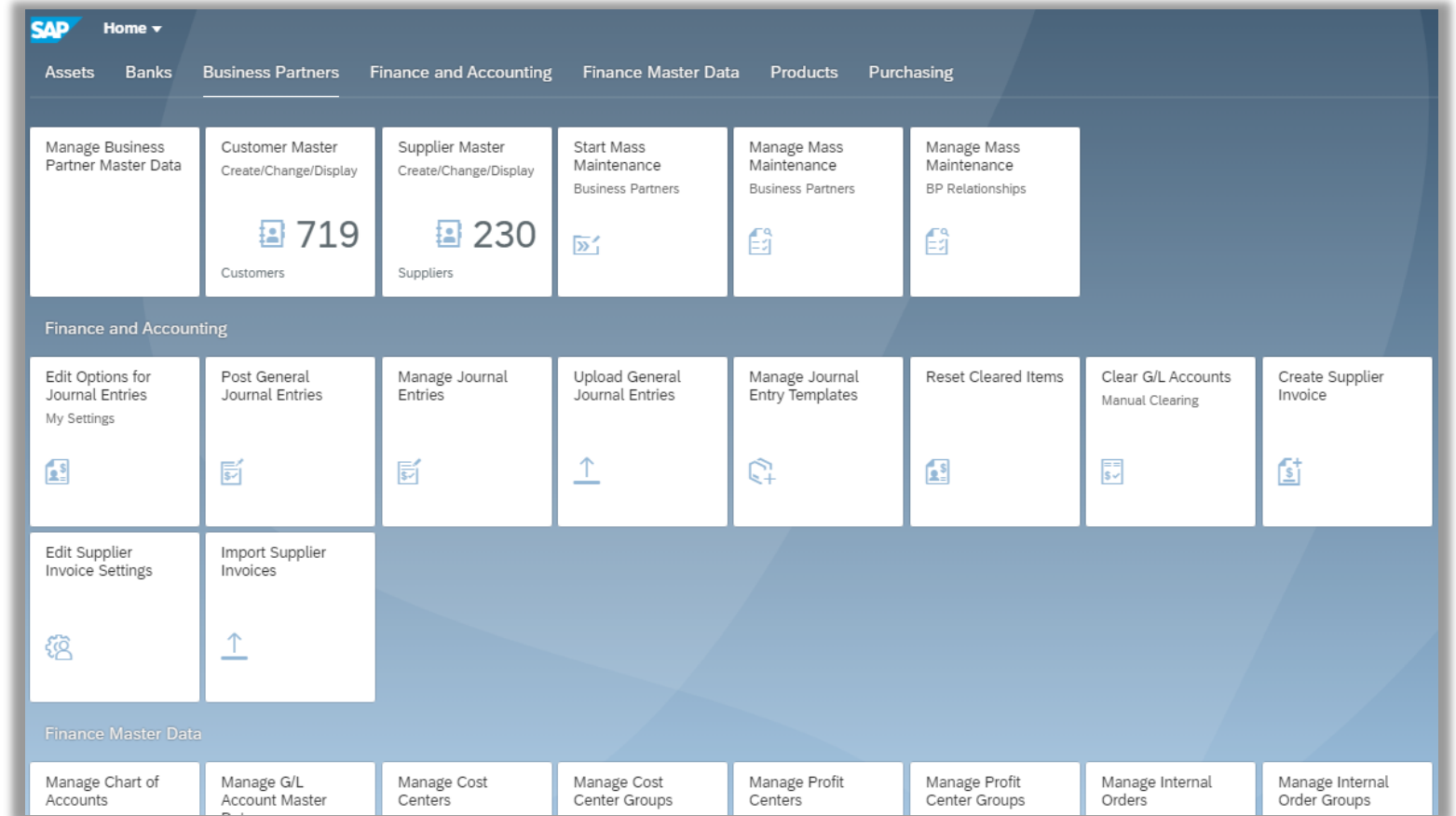
SAP Interface through the years



SAP Fiori

Fiori Launchpad

- Customizable grouping of Fiori Apps
- Role-based access/views of Apps
- Users can:
 - Customize the theme
 - Customize options in Apps/App groups, if allowed



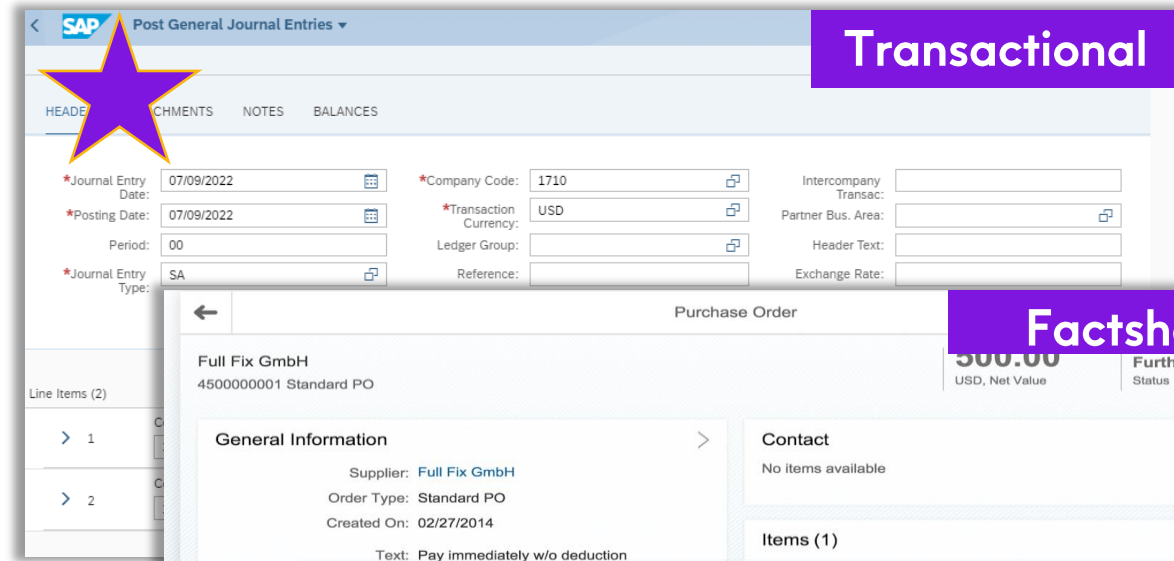
SAP Fiori

Fiori Apps provide a simplified, modern web-based interface

Fiori App types

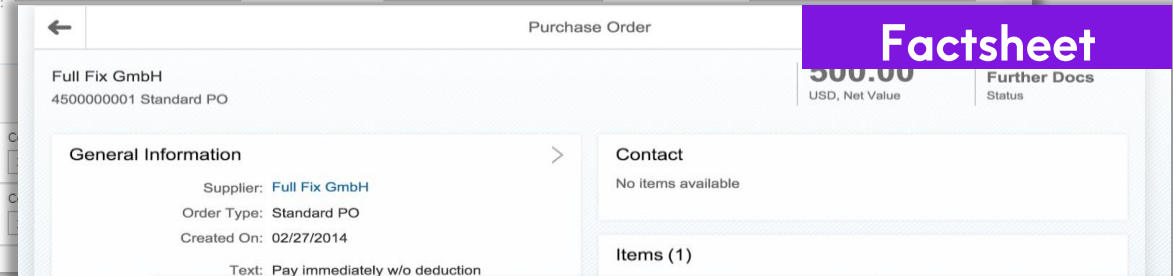
- Transactional – perform data input/maintenance tasks, ex: create sales order, PO, journal entry and also master data, like BP or product
- Factsheet - display contextual information and key facts about objects, often allows drilldown
- Analytical – role-based insights into real-time operations via charts/graphs

We are targeting **Transactional** apps for Fiori automation



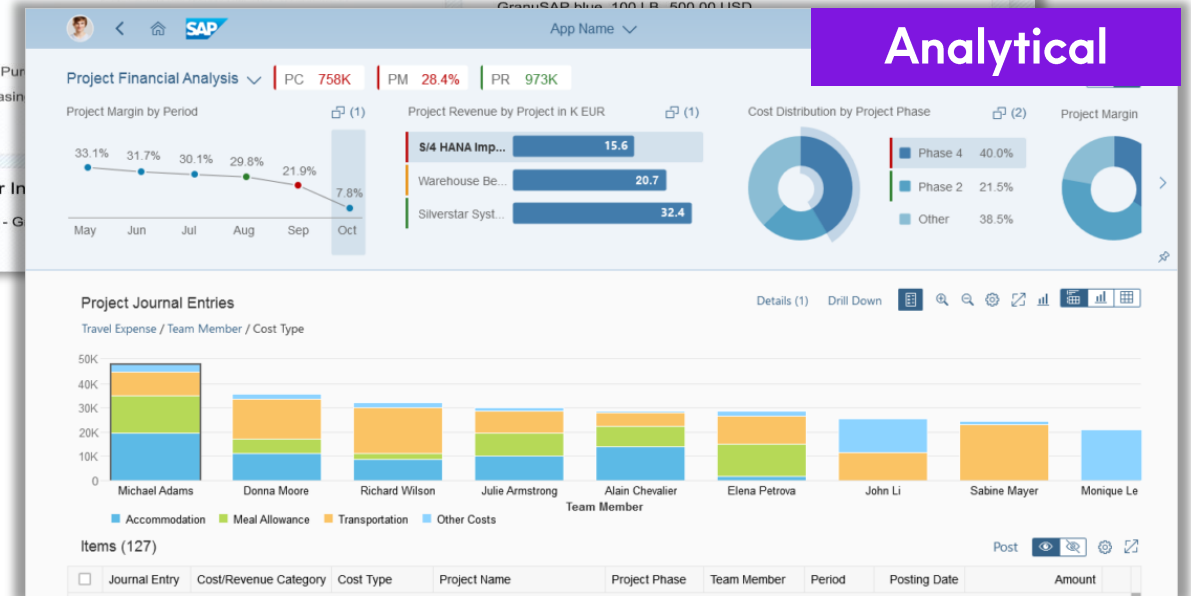
Transactional

SAP Fiori Transactional app: Post General Journal Entries. The interface shows a form for entering journal entry details. A yellow star is placed over the SAP logo. Fields include: *Journal Entry Date: 07/09/2022, *Posting Date: 07/09/2022, *Journal Entry Type: SA, *Company Code: 1710, *Transaction Currency: USD, Ledger Group, Reference, Intercompany Transac, Partner Bus. Area, Header Text, and Exchange Rate.



Factsheet

SAP Fiori Factsheet app: Purchase Order. The interface displays a summary of a purchase order for Full Fix GmbH. Key information includes: Supplier: Full Fix GmbH, Order Type: Standard PO, Created On: 02/27/2014, and a net value of 300.00 USD. It also shows contact information and a list of items.



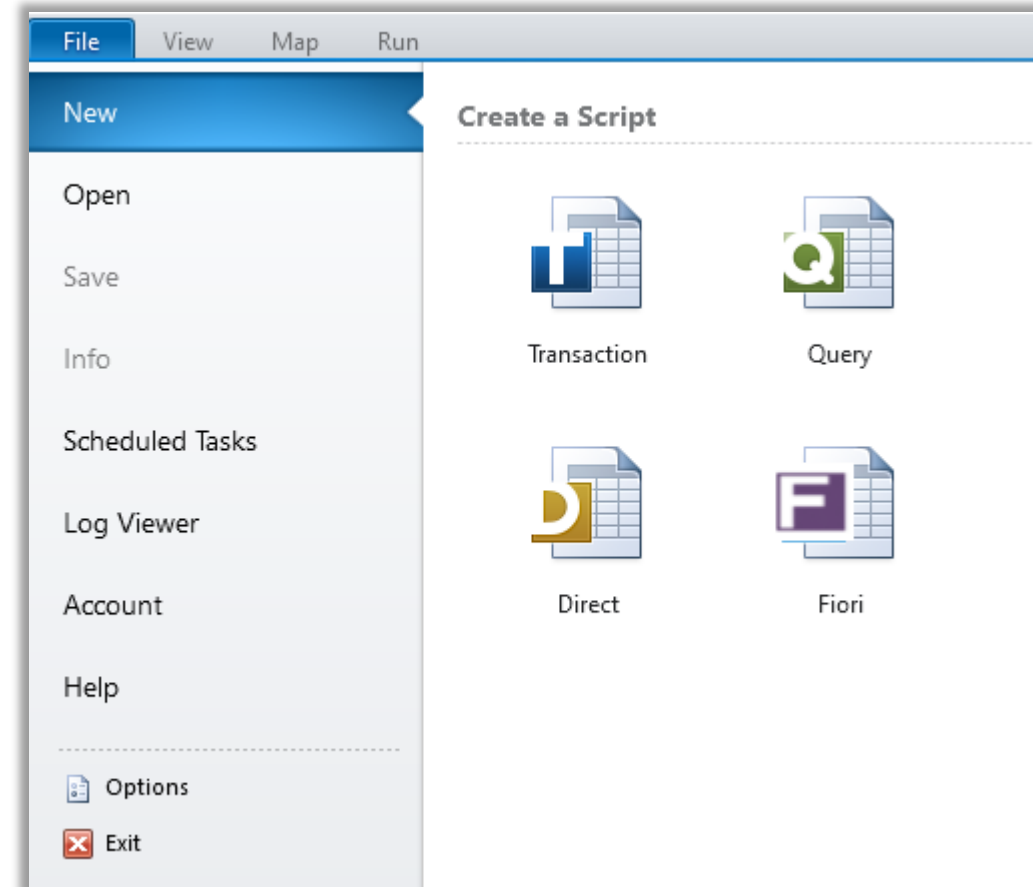
Analytical

SAP Fiori Analytical app: Project Financial Analysis. The interface provides a comprehensive overview of project financials. It includes a line chart for Project Margin by Period (May to Oct), a bar chart for Project Revenue by Project in K EUR (S/4 HANA Imp... 15.6, Warehouse Be... 20.7, Silverstar Syst... 32.4), and a donut chart for Cost Distribution by Project Phase (Phase 4: 40.0%, Phase 2: 21.5%, Other: 38.5%). Below, a stacked bar chart shows Project Journal Entries for various team members, categorized by Accommodation, Meal Allowance, Transportation, and Other Costs.

SAP Fiori App Automation

We're announcing our automation for Fiori Apps

- Targets SAP-recommended UI5 Fiori apps
- Integrates with the SAP backend via standard APIs
- All versions of SAP supported
- No backend changes or installations required



Demonstrations



New

Open

Save

Info

Scheduled Tasks

Log Viewer

Account

Help

Options

Exit

Create a Script



Transaction



Query



Direct



Fiori

Make this my default script-creation method

General Instructions

Creating a script is as easy as 1, 2, 3.

Winshuttle uses scripts to post data to, or pull data from, a system of record. After you create and map a script, others can use the script to upload or download data.

- **Step 1** Choose the type of script to create.
- **Step 2** Choose a creation method.
- **Step 3** Record the operation, including all the fields you will need, and then map the fields to the data file.

System of record operations

Transaction You can use a Transaction script to post one or more data rows as individual transactions in SAP. Start by recording the screens and fields you use in an SAP session, and then map those items to your data set.

Query You can use a Query script to pull data out of SAP. Specify the tables and fields for the data you want, and then set selection criteria. Selection criteria elements can be user-specified, so users who have only Run privileges can set their own criteria.

Direct You can use a BAPI as another method to post data to SAP. Identify the BAPI and elements, and then map those elements to your data file.

Fiori Automation You can use a Fiori Automation script to post one or more rows of data in SAP. Start by recording the screens and fields you use within your Fiori app and then map those fields to your data set.

New

- Open
- Save
- Info
- Scheduled Tasks
- Log Viewer
- Account
- Help

- Options
- Exit

Create a Script



Transaction



Query



Direct



Fiori



Make this my default script-creation method

General Instructions

Creating a script is as easy as 1, 2, 3.

Winshuttle uses scripts to post data to, or pull data from, a system of record. After you create and map a script, others can use the script to upload or download data.

- Step 1** Choose the type of script to create.
- Step 2** Choose a creation method.
- Step 3** Record the operation, including all the fields you will need, and then map the fields to the data file.

System of record operations

Transaction You can use a Transaction script to post one or more data rows as individual transactions in SAP. Start by recording the screens and fields you use in an SAP session, and then map those items to your data set.


Query You can use a Query script to pull data out of SAP. Specify the tables and fields for the data you want, and then set selection criteria. Selection criteria elements can be user-specified, so users who have only Run privileges can set their own criteria.

Direct You can use a BAPI as another method to post data to SAP. Identify the BAPI and elements, and then map those elements to your data file.


Fiori Automation You can use a Fiori Automation script to post one or more rows of data in SAP. Start by recording the screens and fields you use within your Fiori app and then map those fields to your data set.

- New
- Open
- Save
- Info
- Scheduled Tasks
- Log Viewer
- Account
- Help
- Options
- Exit


Create a Script




Transaction



Query



Direct



Fiori

Make this my default script-creation method

General Instructions

Creating a script is as easy as 1, 2, 3.

Winshuttle uses scripts to post data to, or pull data from, a system of record. After you create and map a script, others can use the script to upload or download data.

- Step 1** Choose the type of script to create.
- Step 2** Choose a creation method.
- Step 3** Record the operation, including all the fields you will need, and then map the fields to the data file.

System of record operations

Transaction You can use a Transaction script to post one or more data rows as individual transactions in SAP. Start by recording the screens and fields you use in an SAP session, and then map those items to your data set.

Query You can use a Query script to pull data out of SAP. Specify the tables and fields for the data you want, and then set selection criteria. Selection criteria elements can be user-specified, so users who have only Run privileges can set their own criteria.

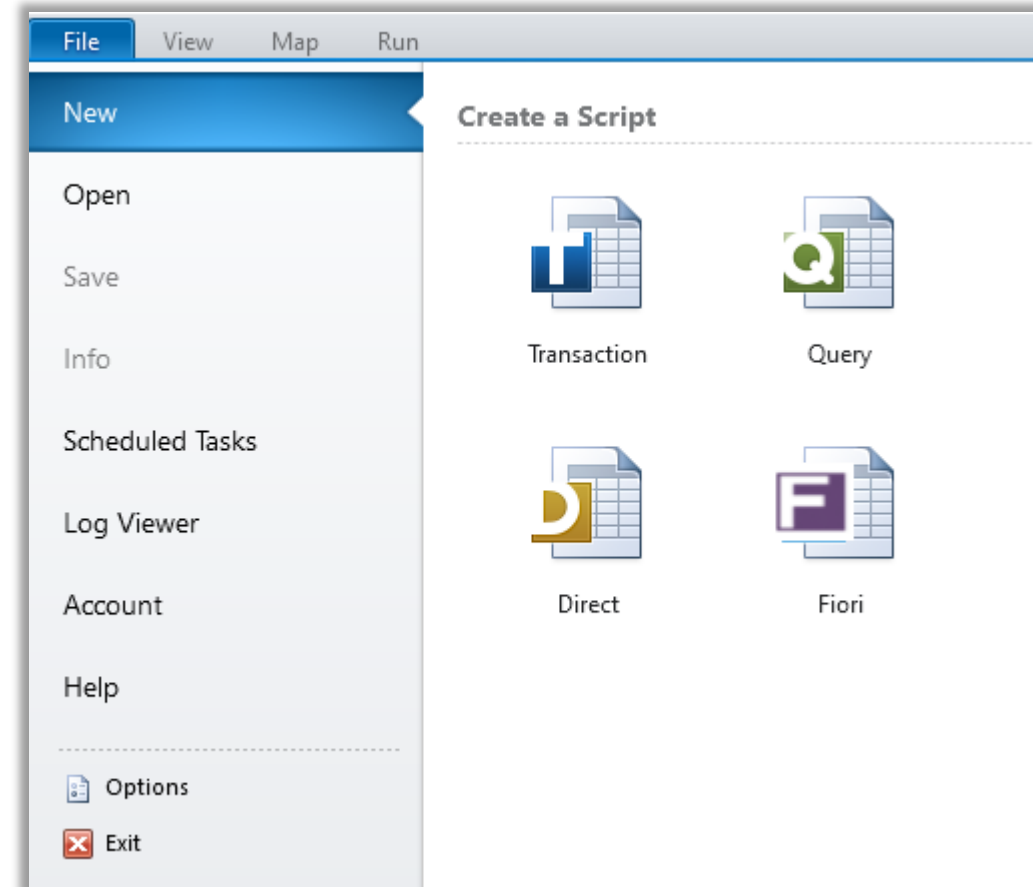
Direct You can use a BAPI as another method to post data to SAP. Identify the BAPI and elements, and then map those elements to your data file.

Fiori Automation You can use a Fiori Automation script to post one or more rows of data in SAP. Start by recording the screens and fields you use within your Fiori app and then map those fields to your data set.

SAP Fiori App Automation

Automation targets, regardless of the interface:

- Repetitive tasks
- Higher volume
- Complexity – lots of steps, like:
 - Find object, open, edit, click tab, scroll down, drill down, etc.
- Meets automation goals for:
 - Efficiency
 - Accuracy
 - Consistency
 - Performance
 - Citizen development



Fiori Automation

Want Early Access?

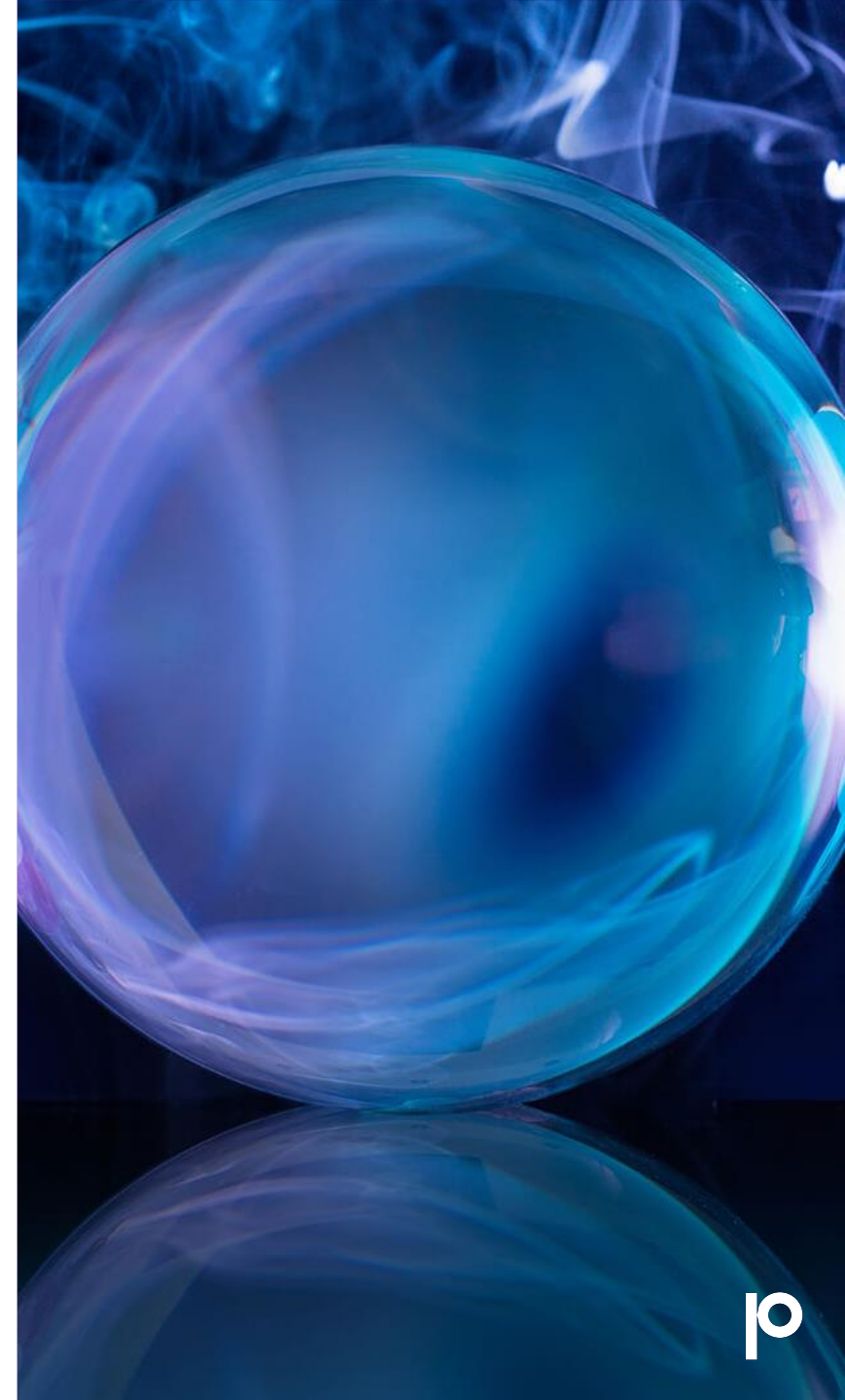
We are looking for customers who want to be involved in this effort, providing input and feedback on how a Fiori automation solution would benefit your business.

We are looking for customers who:

- Are using Fiori apps on S/4HANA (standard or custom apps)
- Are willing to discuss your needs

For more information on the Beta program:

- Contact your Precisely Account Representative
- Call +1 (877) 700 0970
- Visit www.precisely.com/contact



Questions?



Let's continue the conversation...



www.precisely.com

Demos
White Papers
Case Studies



Contact us

Set up a 30-minute personalized demo

+1-877-700-0970

“Get in touch” on www.precisely.com

precisely

Microsoft Partner

Gold Application Development
Gold Collaboration and Content



SAP® Certified
Integration with SAP® S/4HANA



Thank You

precisely