



# Sustainability Through An Adaptive Lens

February, 2023

**Sujatha Kamma**, Industry Advisor – Public Sector  
**Christian Butzlaff**, Chief Sustainability Architect, SAP  
**Dania Fayyaz**, Sustainability Program Manager, NA , SAP



# Speakers & Agenda



**Sujatha Kamma**  
Industry Executive Advisor,  
Public Sector & Healthcare, SAP



**Christian Butzlaff**  
Chief Sustainability Architect,  
Sustainability Go-To-Market, SAP

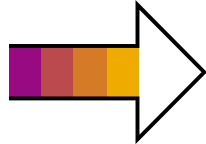


**Dania Fayyaz**  
Sustainability Program Manager,  
Sustainability Go-To-Market, SAP

1. Trends Policies to Actions (Climate Adaptability – Sustainability & Integrated Asset Management)
2. Sustainability Breakout Session
3. Sustainability - Act, Report and Measure towards Climate Adaptability, Social Equity & Economy
4. Integrated Asset Management
5. Call to Action

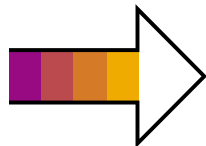
# Trends to Policies & Framework

## Global and Regional Trends



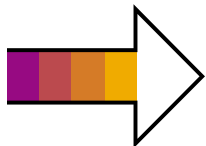
- Warmer climate & Shifting Precipitation Patterns
- Extreme Weather Events
- Pandemic & Global Crisis
- Economy

## Mandates, Framework & Funding



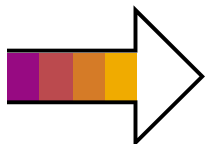
- Pledge:** Net Zero 2050
- Frameworks:** UNSDGs, TCFD, GRI, SASB
- \$1.56B for Disaster Mgmt
- Funding:** \$180 billion over 12 years in infrastructure projects across Canada.

## Acknowledging Impact



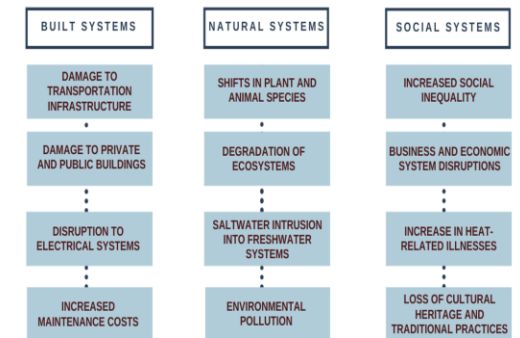
- Impacts on Provinces, Cities and Municipalities
- Socio economical Impacts & Impact to Lives and Livelihood
- Impact to Infrastructure and Assets

## Taking Action



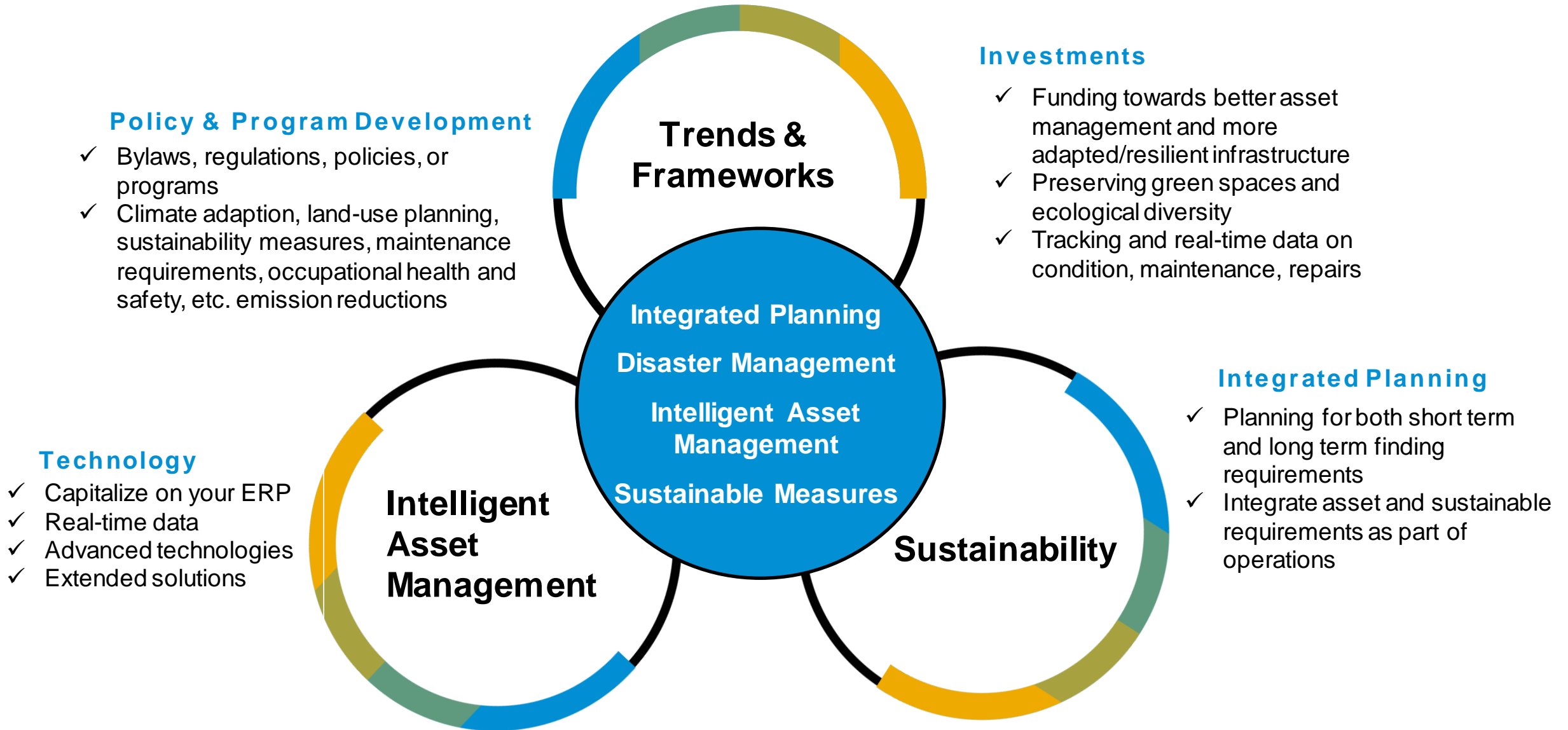
- Climate Change:** Climate Adaptability, Climate Change Measures & Disaster Management
- Social:** Diversity & Inclusion
- Economy:** Economic Diversity

UN Sustainability Development Goals

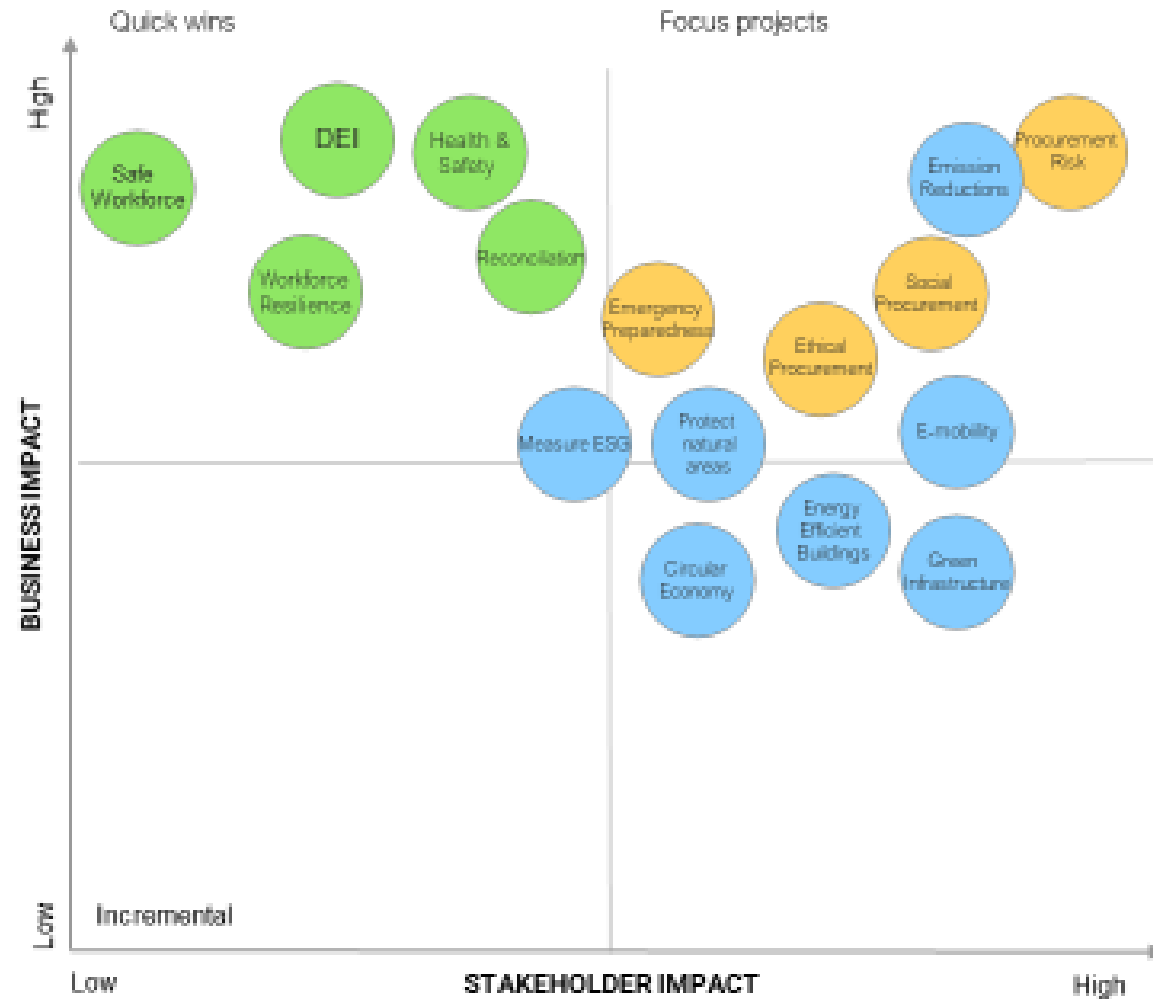


From Federation of Canadian Municipalities

# Policy & Frameworks to Insights



# Sustainability Impact Matrix – For Public Sector Canada



Inclusive and diverse culture

Path to net zero 2050 & climate adaptability

Resilient supply chains

Effective, efficient and sustainable operations

Prevent, prepare, respond and recover climate impacts and disasters





# Sustainability Break Out Session



Stay Informed

Bring depth to your conversations. Subscribe Now for \$2/week [Click here.>](#)

☰ Sections 🔍 Search

VANCOUVER SUN

News Hot Topics Business Opinion Sports Arts Life Puzzles Comics Homes Travel Remembering Driving Healthing The GrowthOp Newsletters ePaper Local Auction

# How XXX Became the Most Sustainable Company

## XXX was voted the most Sustainable Company in Canada for the Year 2025

### An Exclusive Interview with the CEO and CSO

1



B.C.'s highest court orders forfeiture of three Hells Angels clubhouses

TRENDING 🔥

2



Is Metro Vancouver in for more snow?

TRENDING 🔥

3



Tim Hortons is experimenting with returnable cups. I tried it...

TRENDING 🔥

4



The quick rise and public fall of Vancouver's Coromandel Properties

TRENDING 🔥

5



Victoria man's killing followed dispute with bikers at nightclub, trial told

TRENDING 🔥

THE BEST RUN



## Divide in 3-5 Groups

### In 2025 You Became the Most Sustainable Company

What would that mean for your company?

What would need to happen to make that reality?

How could SAP help you to achieve this goal?

**3 Minutes Brainstorm for each Question, 1 Minute Clustering of Ideas**



1 Idea per Post Its

**Assign One Person for Read Out**



The background of the slide is an aerial photograph. On the left side, there is a large, calm lake with deep blue water. On the right side, there is a dense, lush green forest. A paved road with yellow lane markings curves through the forest, separating it from the lake. The overall scene is peaceful and natural.

# Sustainability - Act, Report and Measure towards Climate Adaptability, Social Equity & Economy



# The ESG expectations are continually growing

## RECORD

ESG transparency along the value chain

Data spanning multiple sources, formats and organizations without the granular level of details and precision



## REPORT

New and increasing ESG reporting requirements

Multiple frameworks and standards to report against and fulfilling the respective requirements



## ACT

Sustainability touches all business processes

Sustainability strategy and initiatives disjoint from corporate strategy, business models and processes



# SAP Holistic Steering & Reporting

A part of the SAP Cloud for Sustainable Enterprises

**Business Network**

for carbon data sharing

**Industry Capabilities**

to solve your specific challenges

**Partner Ecosystem**

geared towards sustainability

Focus today

## Holistic Steering and Reporting – SAP Sustainability Control Tower

Record – Report – Act

### Zero Emissions

with Climate Action

**Decarbonize** your entire value chain (scope1-3) based on actual business transactions

### Zero Waste

with Circular Economy

Incorporate **circularity** into your supply chain & create sustainable business models

### Zero Inequality

with Social Responsibility

Understand the **impact** of your **business** on **people and the society**

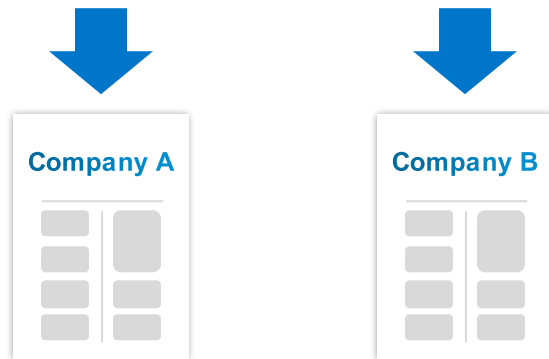
SAP S/4HANA, Customer relationship management, Human capital management, Spend Management and Business Network

SAP Business Technology Platform

# Climate Action Vision | Evolution of carbon accounting

Today

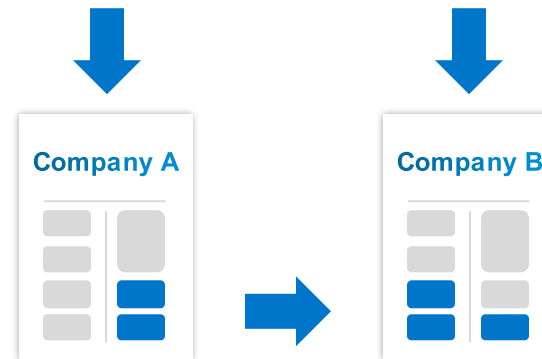
**Top-down carbon accounting**  
based on averages



- Top-down carbon calculator or self-developed tools (e.g., in Excel)

Tomorrow

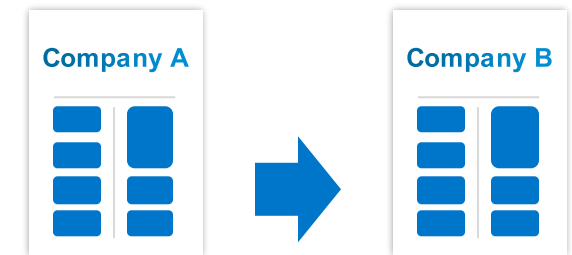
**Hybrid carbon accounting**  
transaction based



- Bottom-up carbon calculator
- Product-level carbon calculator
- Carbon data sharing
- Transactional ERP data foundation

Vision

**Ledger-based carbon accounting**  
based on actuals



- Green ledger as part of transactional ERP data foundation



## SASB Standard Publication:

*A robust process to assess the materiality of sustainability topics is data-driven and connected to governance mechanisms that involve the board and the C-suite, and, in turn, are indicative of a healthy company*

*“Using materiality for just reporting is a missed opportunity.”*

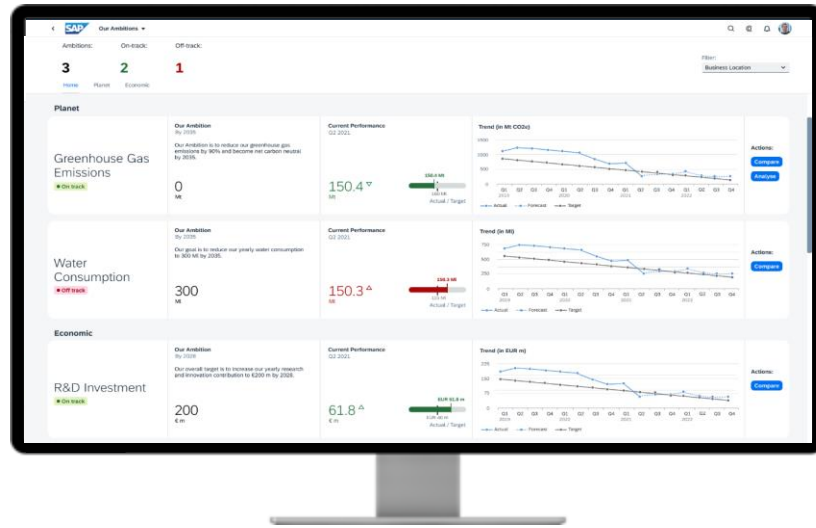
*Elisa Moscolin, Head of Sustainability & CSR at Santander*

[SASB](#)



# SAP Sustainability Control Tower

Automated, auditable, compliant reporting with actual data & insights to embed sustainability into business processes



Standard semantic frameworks supported



## Record: Actuals instead of averages

Record ESG factors with out-of-the-box integration with SAP systems for faster time to value & granular data visibility based on actual data, not averages

## Report: Audit-ready ESG metrics

Report regulatory compliant ESG metrics covering common frameworks based on an open & extensible solution with the largest ESG ecosystem

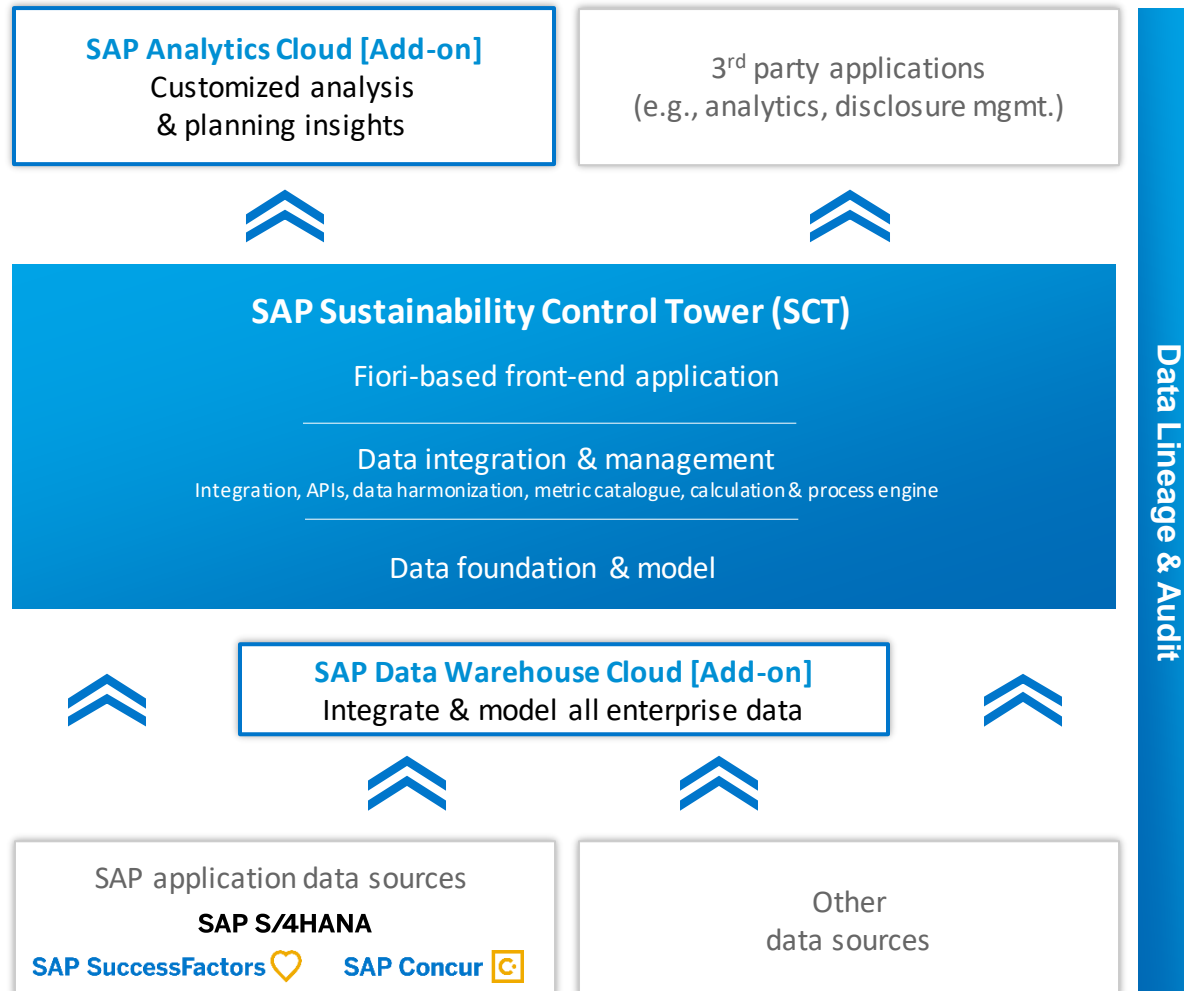
## Act: ESG embedded in business processes

Act by planning your future with actionable insights, forecasts and setting targets; track initiatives & optimize business processes to make an impact



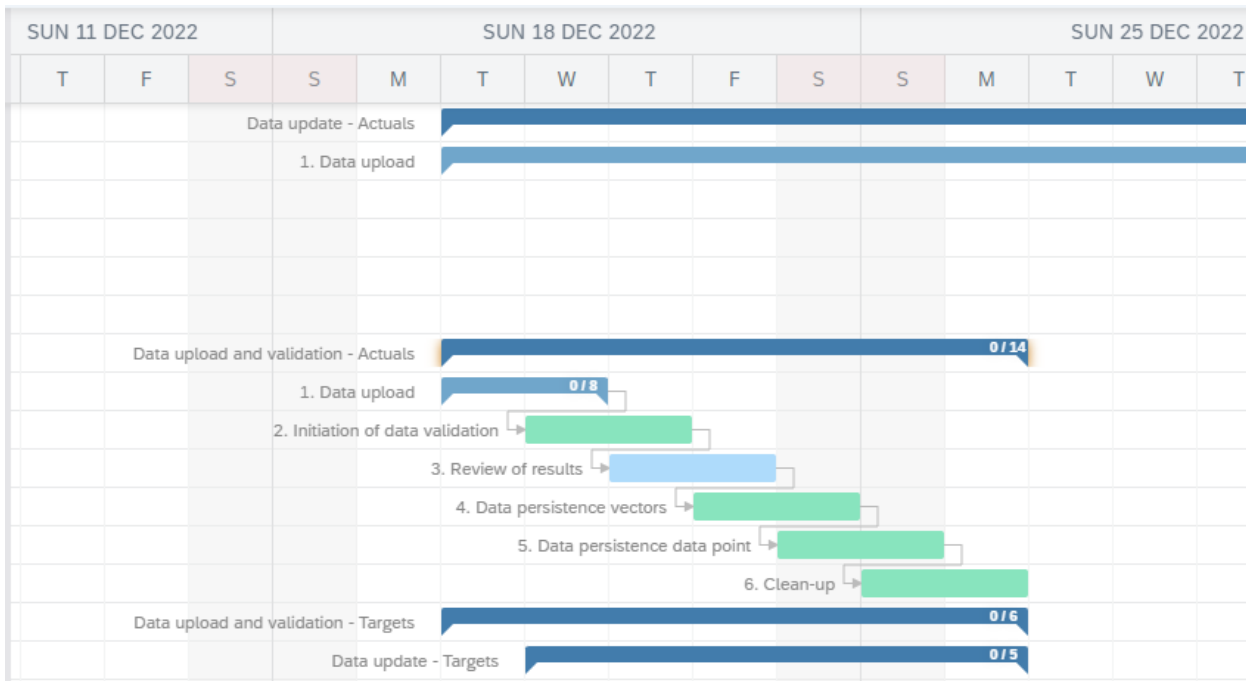
# Achieving Holistic Steering and Reporting

Empower your business to act with ESG transparency along the value chain



- Harmonized insights** by consolidating, modelling and enriching ESG, financial and operational data enabling boardroom and business-level decisions
- ESG performance management** with enterprise planning, predictive forecasting, what-if simulations and impact analysis across the value chain
- Pre-built data models** to support established reporting frameworks and customer-specific adaptations based on SAP, non-SAP, structured and unstructured data
- Embed sustainability dimension** into business applications and processes through enterprise data integration and modelling and enriched partner content

# Auditability, Assurance and Attestation Capabilities



- ❑ Data Validation and Approval Workflows
- ❑ Workflow Task Ownership/ Access Control
- ❑ Audit Trail (Who changed what and when)
- ❑ Period Assignment
- ❑ Data Lineage





Climate Change and Its Impact on Regulations – Introduction to TCFD Recommendations  
Product Information

Fri, 21 Jan 2022 20:22:23

ESG Report 2020

ESG Website

Get involved!

### Our Performance

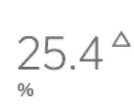
**Greenhouse Gas Emissions**  
Current Month



**Water Consumption**  
Current Quarter



**Women in Leadership**  
Current Month



**R&D Investment**  
Current Month



**Work-related Incidents**  
Current Month



### Insights

Our Ambitions



WEF SCM Dashboard



TCFD Dashboard



Greenhouse Gas Emission Analytics



### Performance Improvement

Our Initiatives



# Sustainability Solutions | SAP S/4HANA For Environment Management



## Emissions

- Manage emission sources, verify incoming data, trends
- Automated calculations
- Reduce manual effort to report
- Manage exceedances



## Energy

- Capture energy produced or consumed and keep track of improvement over time in energy use and associated emissions



## Water

- Capture the amount of water used or recycled
- Assess sampling results from environmental monitoring



## Waste

- Capture the amount and type of waste produced, reduced or eliminated



## Environment Monitoring

- Monitor substances in the environment, with reference to regulations, permits or standards
- Flexible data aggregations



## Compliance Tasks

- Schedule pro-active, recurring tasks and perform ad-hoc tasks
- Capture references to permits or regulations
- Visibility of critical outstanding tasks, overdue permits and exceedances



## Deviations

- Exceptions are automatically raised for permits or limits
- Capture data anomaly reasons, corrections
- Manage and report exceedances
- Implement corrective actions



## Data Collection

- Manage incoming data from various sources:
- IoT sensors or devices
  - Interfaces
  - Sampling campaigns, manual inputs, Excel uploads
  - Mobile app for data input



## Rehabilitation

- Manage closure and rehabilitation at a location, with environmental monitoring and tasks
- Oversight of all activities driven by internal corporate standards, local regulations or permits.



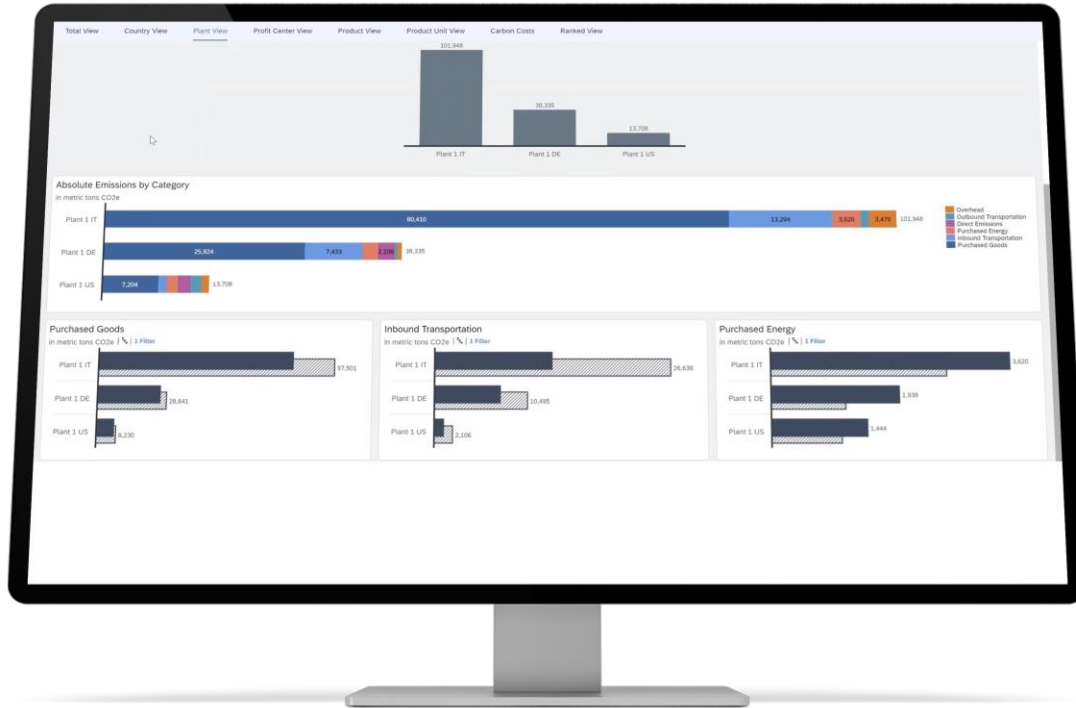
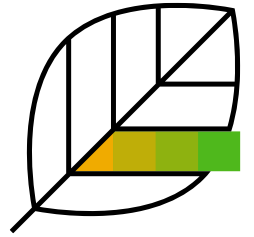
## Permits, Compliance

- Manage environmental regulatory requirements or corporate standards
- Track auditable records of changes over time



# SAP EHS Environment Management for Corporate GHG Emissions

## Keep on top of your climate obligations, easily and cost-efficiently



### In a Nutshell

This solution delivers a single primary source of emissions data that can be provided both for overall corporate sustainability reporting and carbon credit accounting. As a consequence, fulfilment of compliance obligations becomes both easy and cost effective.

### Objective

Establish a robust and auditable data collection, monitoring, and reporting function for managing GHG emissions.

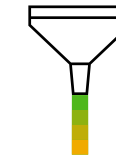
### Capabilities

- Tools and processes for emission data collection and integration
- The ability to gather and combine direct and indirect emissions data encompassing both facility owned assets and services / operations
- Content integration systems that keep processes up-to-date with the very latest regulatory changes

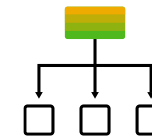
### Supporting Applications

SAP EHS Environment Management for Emission Management is technically embedded in S/4HANA® Enterprise Management.

### Benefits



**Single Source of Truth:** improved accuracy and consistency of emissions data across the entirety of the enterprise



**Elevated Decision Making:** real-time, actionable insight into reducing energy usage and carbon emissions

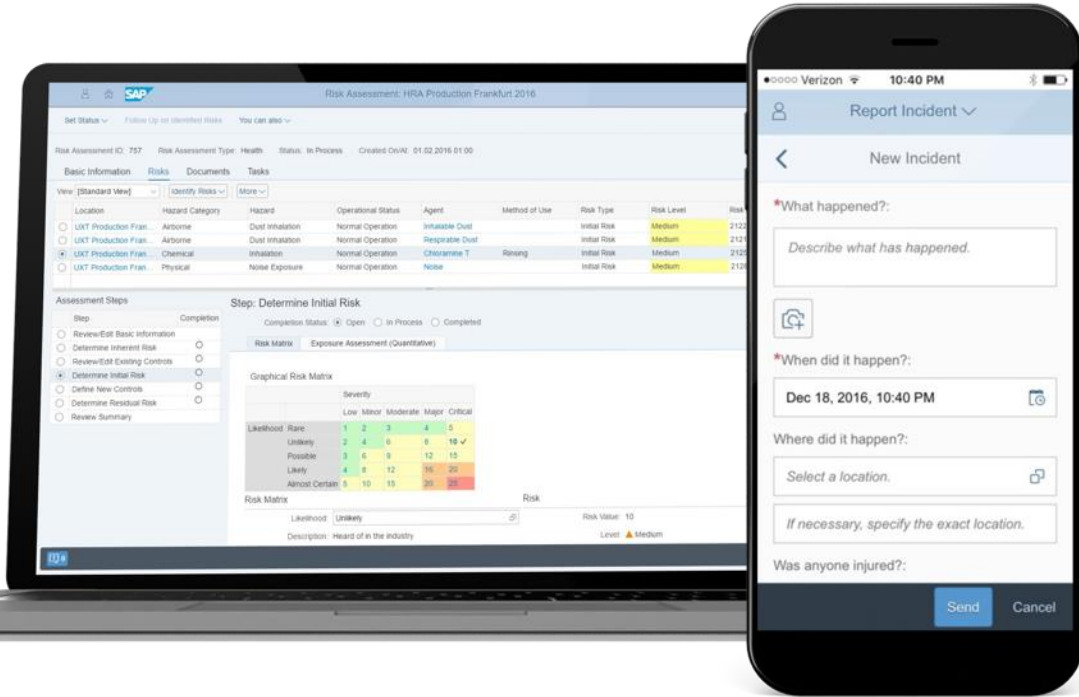


**Easy Compliance:** reduced effort and cost for data acquisition, calculation, and reporting

# Foster a strong culture of corporate safety with centralized risk management

## SAP EHS Management, Incident Management

## SAP EHS Management, Health and Safety Management



### Capabilities

- Multiple options for incident data entry, including mobile and offline entry as well as mobile-enabled hazard identification
- Real-time inventory reporting, incorporating vendor SDS data for the chemical approval process
- Centralized database that directly integrates with maintenance and HR processes
- User-friendly dashboard view synthesizing different sources of data for fast and easy interpretation

### Benefits



**Reduced Risk Exposure:**  
End-to-end risk management minimizing the severity and frequency of incidents



**Total Visibility:**  
Critical safety information available to all – right from the top floor to the shop floor



**Rapid Reaction Speeds:**  
Reduced time for incident processing, regulatory reporting and corrective action

### In a Nutshell

SAP EHS solutions provide a holistic approach to worker safety that embeds operational risk management systematically across the entirety of your operations. This forms the basis of a robust corporate safety culture able to respond proactively to hazards and withstand future health and safety challenges.





# Integrated Asset Management



# Case Study: City of Selkirk

- In 2016, the City published a Greenhouse Gas Reduction Plan to reduce emissions by 20% in 10 years
- Identified climate change impacts likely to affect Selkirk's assets and infrastructure were identified and linked to the City's service areas (i.e. transit services, transportation, parks & open spaces, water utility, sewer utility, land drainage, fire services, and government services)
- Risks of these impacts were then assessed in order to prioritize impacts to which the City was most susceptible to. More than 50 actions to tackle each of the high-risk climate change impacts were identified

Taken from – Federation of Canadian Municipalities





# Case Study: Prince George, British Columbia

- Prince George was one of the first local governments in Canada to develop a Climate Change Adaptation Strategy in 2009.
- In 2018, a community-wide process with a wide range of stakeholders that represented social, economic, infrastructure and environmental sectors.
- The completed document Climate Change Adaptation Strategies for the Community of Prince George, is divided into four core objectives, with five corresponding themes:
  1. Strengthen Infrastructure Resilience and Reduce Risk to Buildings and Property
  2. Protect Public Health and Improve Economic Resiliency
  3. Enhance Resilience of Ecosystems and Protect Natural Areas
  4. Integrate Climate Change Thinking and Response

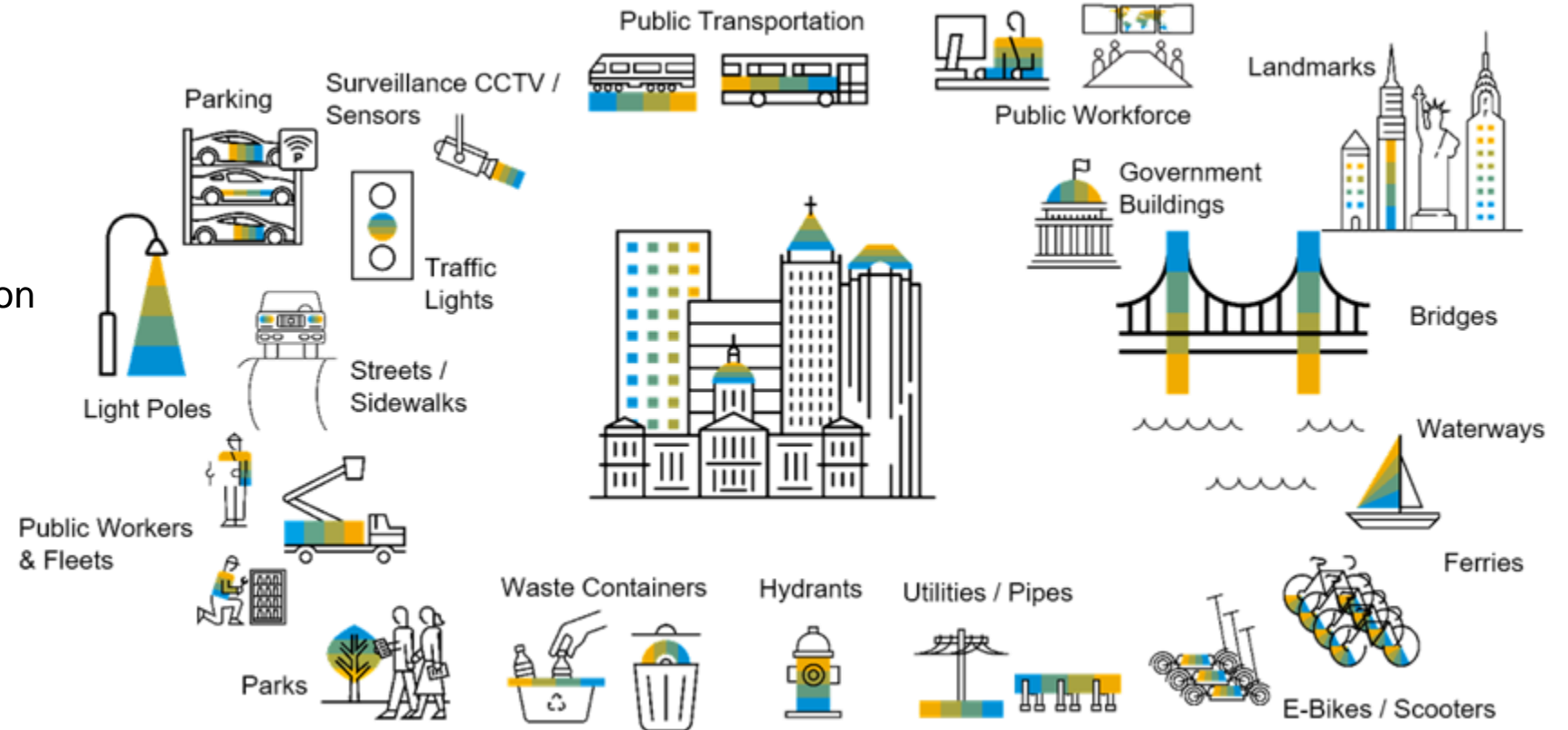
Taken from – Federation of Canadian Municipalities



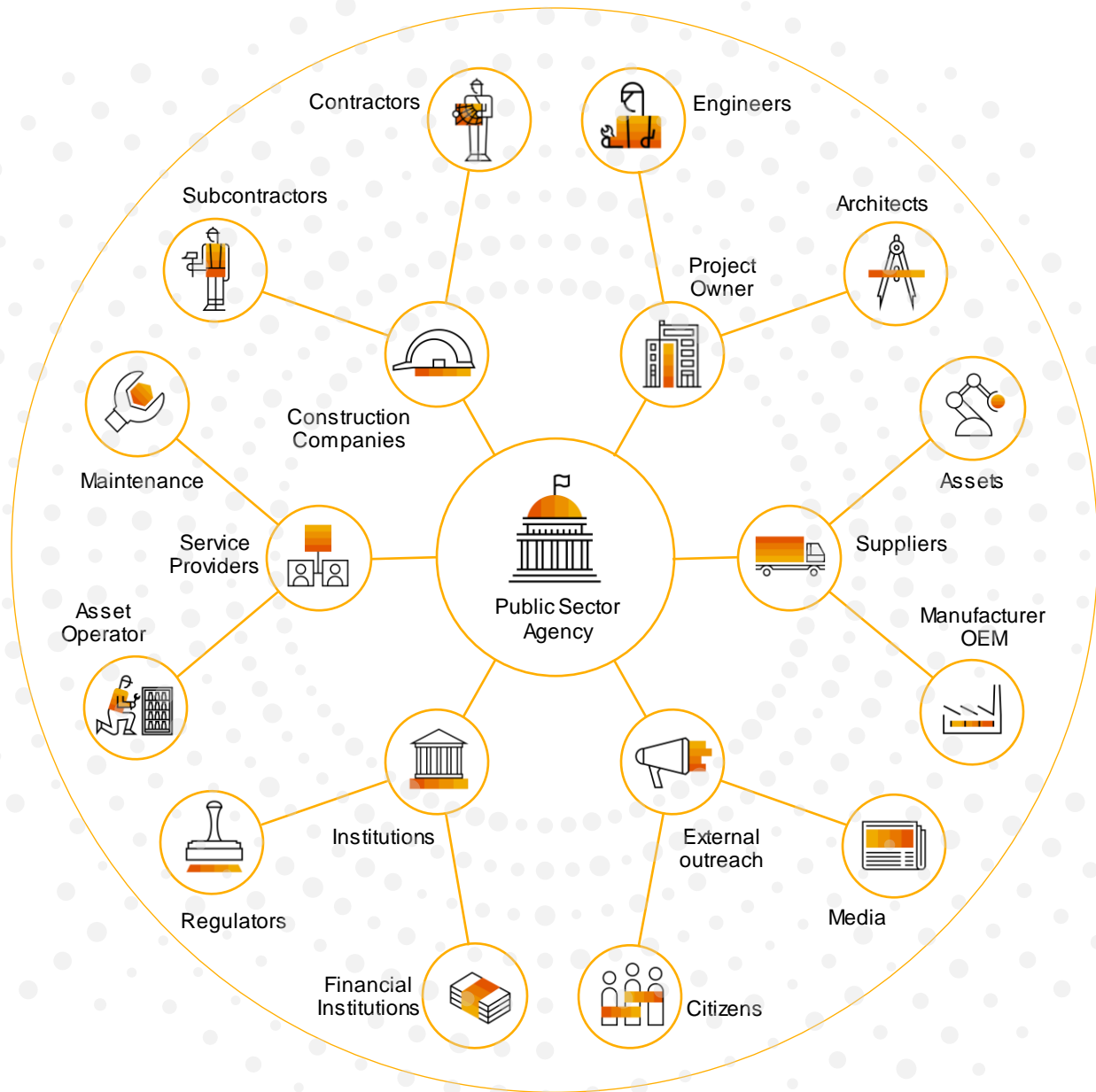
# Public infrastructure considers a wide range of assets & public agencies

## Relevant for ...

- Cities, counties and states
- Roads administration
- Departments of transportation
- Ports
- Transit agencies
- Airports
- Public utilities
- ...







## SAP Intelligent Infrastructure Management Network connects partners and assets

Transform today's fragmented asset management processes into a unified, collaborative and intelligent network

# Evolve from reactive to reliability-centred & proactive maintenance



## Reactive maintenance

after failure is too late for efficient planning and optimization and leads to higher cost at lower availability



## Calendar based maintenance

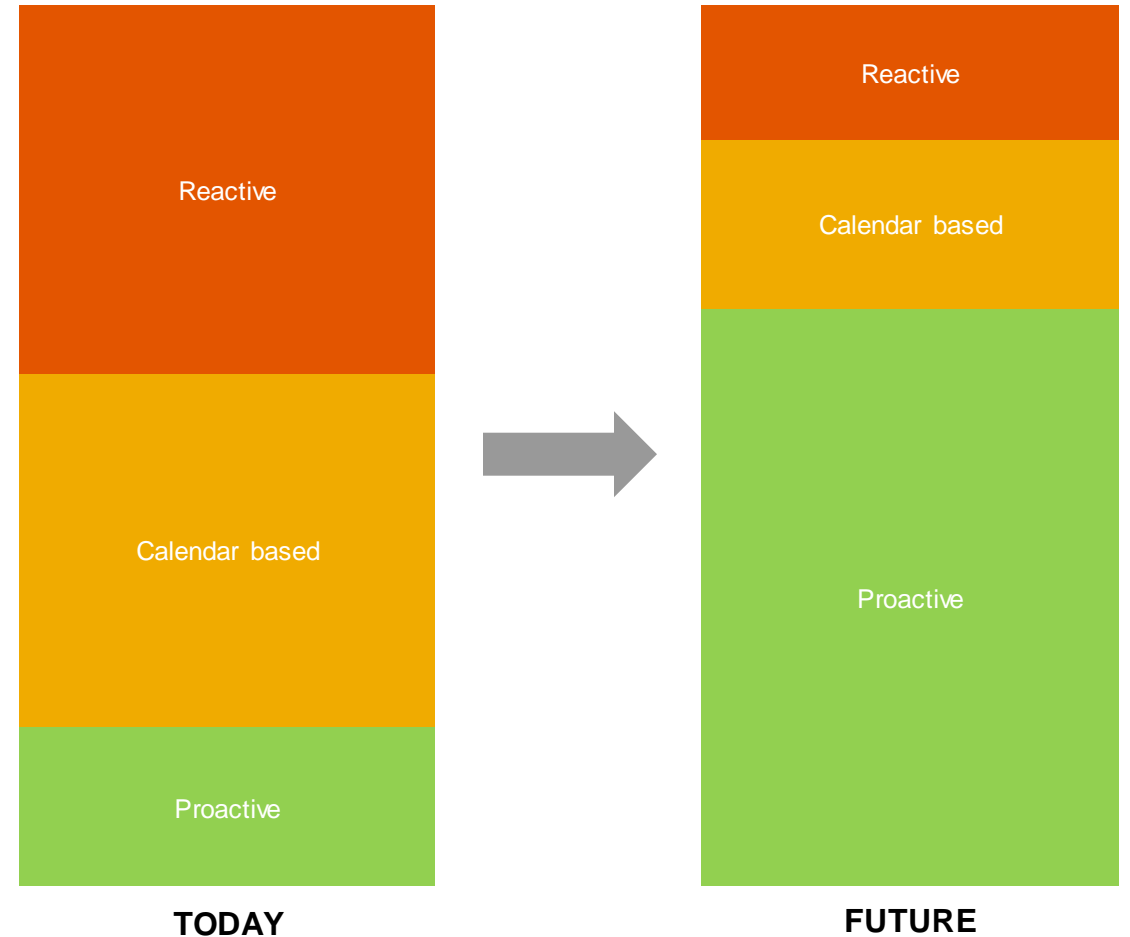
results in over-maintaining assets at higher costs and less availability



## Proactive maintenance

Intelligent Asset Management supports data driven proactive maintenance strategies based on reliability & other goals. This achieves the delicate balancing of profitability, asset health and availability

Prevention, Preparedness, Response & Recovery model (PPRR) is an approach used in disaster and emergency management





# Priorities in asset management



## Changing Maintenance Strategy

Move away from emergency and unnecessary preventive maintenance towards predictive and prescriptive maintenance.



## Utilize Digital Twin

Have a digital twin of your equipment in your system. Have access to real-time sensor data, 3D visualization and synchronize across all systems.



## Stay Connected

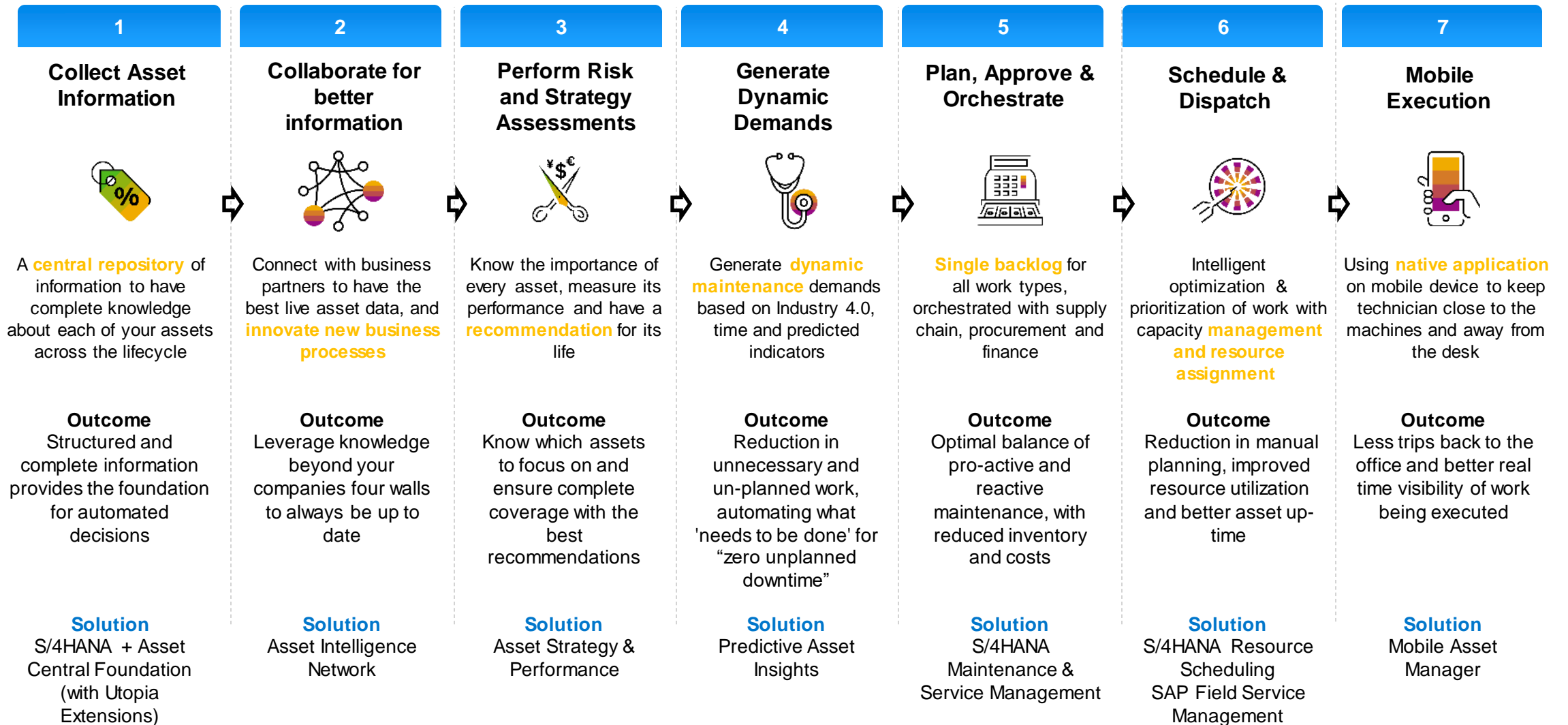
Employ mobile devices in your day to day work, utilizing Fiori Launchpad on your mobile as well as native mobile apps.



## Transparent Maintenance Cost

Analyze the actual cost of maintenance to further optimize your processes and maintenance strategy to reduce cost.

# Integrating **Planning and Execution** with SAP Intelligent Asset Management

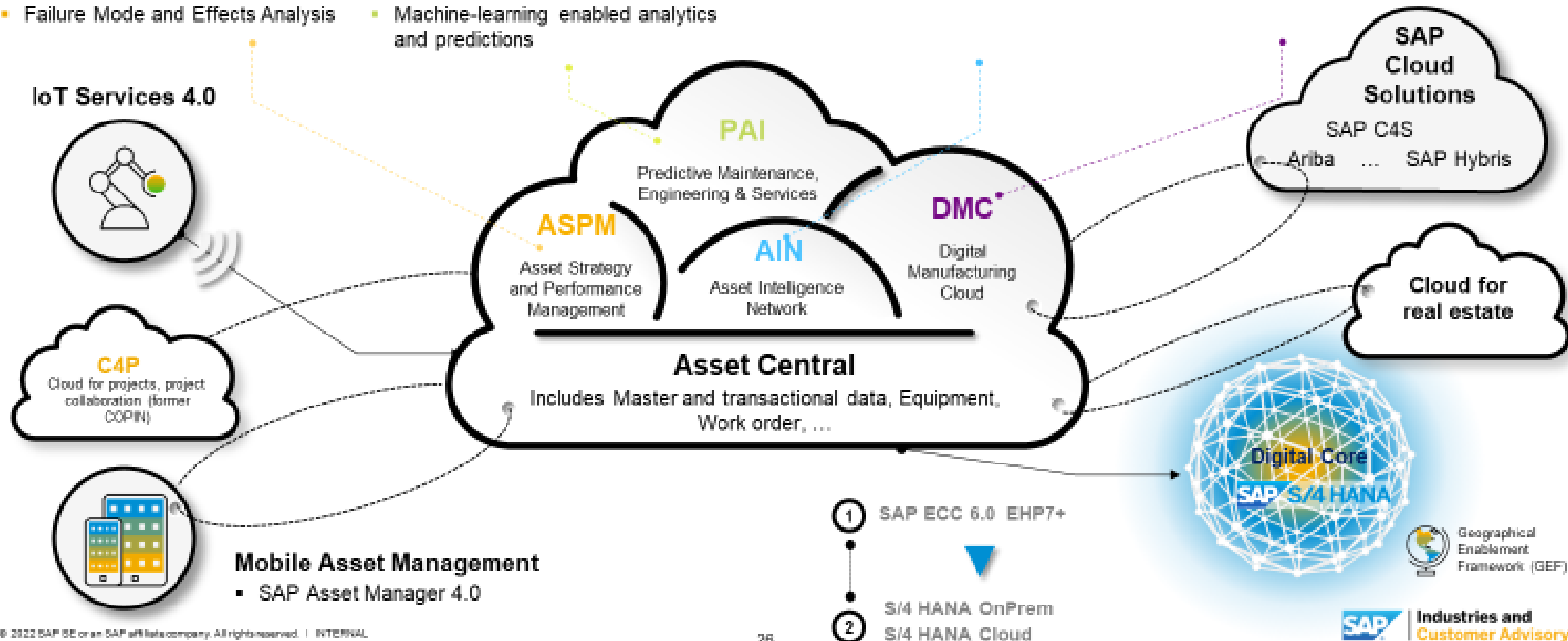




# Sample customer journey for Intelligent Asset Management

## Step 3 – Connect to your full environment with predictive maintenance and intelligent networks

- Risk and Criticality
- Strategy Review
- Risk Centered Maintenance
- Failure Mode and Effects Analysis
- Condition Monitoring
- Dynamic Maintenance
- Derived Indicator Management
- Machine-learning enabled analytics and predictions
- Network
- Collaboration
- Equipment Portal
- 3D Virtual Simulation
- Real time engineering
- Dynamic 3D visualization



# NPRA and SAP combine IoT sensors, digital twin technology, and real-time asset intelligence to **make bridges safer.**

By deploying the **SAP® Predictive Engineering Insights solution enabled by ANSYS** and applying the **Industry 4.Now approach** to Norway's Stavå Bridge, SAP and partner ANSYS Inc. are helping NPRA improve bridge safety and maintenance with:

- Bridge sensors that detect vehicle vibrations and give real-time alerts when motion and displacement thresholds are exceeded
- Digital models that simulate the dynamics of a bridge's structure down to the materials level, creating a digital twin that delivers real-time insight into the bridge's behavior and warns of potential structural failures
- Reliable, finite element model to understand the complex physical behavior of the bridge using sensor output, with plans to expand to hot-spot analysis
- Deeper insight into bridge stability, carrying capacity, and the degree of wear and tear based on estimated loads over an extended period, helping target and prioritize inspections and maintenance
- What-if analysis for planned bridge maintenance and upgrades to predict the various effects of changes to bridge structure before they are made
- The ability to use global data on bridge failures to simulate various structural and load scenarios to predict future failures and address issues before they occur
- Integrated smart technology and maintenance applications, unifying bridge data and analytics on one platform
- The ability to scale the solution across multiple bridges, providing network-wide insights, helping prioritize maintenance across NPRA bridges, and reducing maintenance costs overall

“We expect that SAP Predictive Engineering Insights enabled by ANSYS will help **maximize the lifetime of our bridges** and optimize the timing of maintenance. If we can keep bridges safe and postpone replacement by 10 years, it's a win-win on cost and safety.”

Trond Michael Andersen, Director Technology, Norwegian Public Roads Administration



Picture Credit | Customer Name, City, State, Country | Picture Credit | Photo: SAP

PUBLIC | Studio SAP | 69048enUS (20/06) © 2021 SAP SE or an SAP affiliate company. [sap.com/terms-of-use](https://www.sap.com/terms-of-use)



**Norwegian Public Roads Administration (NPRA)**  
Oslo, Norway  
[www.vegvesen.no/en](http://www.vegvesen.no/en)

**Industry**  
Public sector

**Employees**  
>7,000

**Revenue**  
€5.14 billion

**Featured Solutions and Services**  
SAP Predictive Engineering Insights enabled by ANSYS and Industry 4.Now

[BTS link](#)

**THE BEST RUN**

**Industries and Customer Advisory**

affiliate company. All rights reserved. | CUSTOMER



# San Diego uses GIS applications to connect with residents and make the city an even safer, cleaner place to live.

By connecting its geographic information system (GIS) technology with **SAP S/4HANA®** and the **SAP HANA® platform**, the City of San Diego now has:

- Custom-built applications that were developed in two weeks, have a live connection to SAP S/4HANA, are supported by Esri ArcGIS, and have SAP HANA as an enterprise geodatabase
- SAP® Geographical Enablement Framework, which connects Esri ArcGIS to SAP S/4HANA
- Custom-built sidewalk condition assessment application that allows the public to report sidewalk issues and helps the city prioritize improvements
- A hydrant pressurization application that gives the fire department direct access to data from public utilities to ascertain the pressurization of hydrants, enhancing emergency response
- “Get It Done” app used by the public to request tasks, which the app then forwards to the work order management system – representing more than 50% of total work orders and thousands of requests per day
- Easily consumable data from a variety of master sources that is pushed to mapping interfaces, making data accessible for users – residents and city workers – at all levels
- Faster development and delivery of new applications for the public

“SAP and Esri **help the City of San Diego run better**. The new tool improves efficiency and helps make the city safer. Our firefighters can now plan and respond to calls faster and better. Within a few weeks, we had a map viewer showing hydrant status.”

Scott Daeschner, GIS Manager, City of San Diego







# Closing Remarks



# Jointly we unlock your sustainability transformation

## Capabilities



# The Cloud for Sustainable Enterprises offers your use cases

## Holistic Steering and Reporting

ESG reporting and performance management | Voluntary and regulatory sustainability frameworks | ESG impact measurement & real-time insights

### Zero Emissions with Climate Action

- Corporate & product emission management
- Sustainable travel & transport
- Green IT
- Carbon markets

### Zero Waste with Circular Economy

- Design for circularity
- Responsible sourcing & material traceability
- Waste management
- Takeback management

### Zero Inequality with Social Responsibility

- Ethical procurement & sourcing
- Product safety & compliance
- DEI, Health and Safety Management

## Industry Innovation | Business Network | Ecosystem

Data exchange network | Energy transition | Sustainable farming | Sustainable banking & portfolio management



# Thank you.

Contact information:

**Sujatha Kamma**

[Sujatha.kamma@sap.com](mailto:Sujatha.kamma@sap.com)

**Christian Butzlaff**

[c.butzlaff@sap.com](mailto:c.butzlaff@sap.com)

**Dania Fayyaz**

[Dania.Fayyaz@sap.com](mailto:Dania.Fayyaz@sap.com)

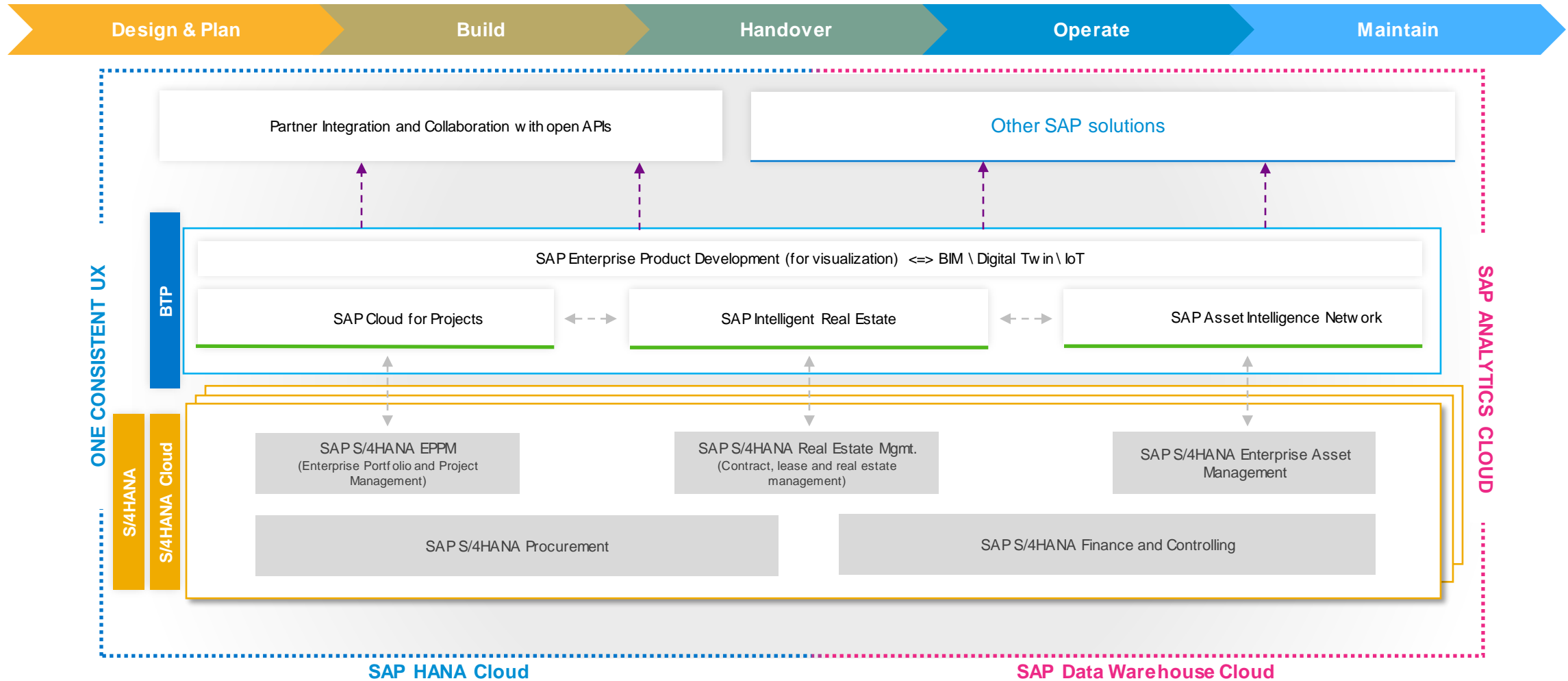


# Appendix

An aerial photograph showing a large, deep blue lake on the left side of the frame. A paved road with yellow lane markings curves along the right edge of the lake, surrounded by a dense forest of green trees. The sky is visible as a bright, hazy area at the top of the image.



# Intelligent Infrastructure Management Network



# Customer stories



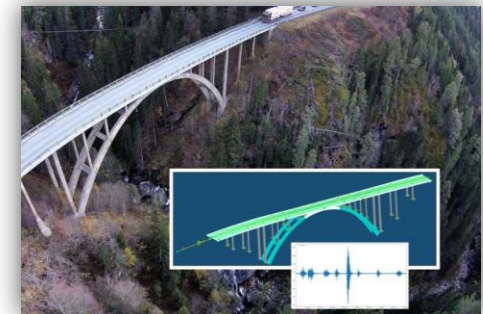
- SAP Geographical Enablement Framework connects [Esri ArcGIS to SAP S/4 HANA](#)
- Development of apps to provide better citizen services (sidewalk condition, hydrant pressurization, service requests, etc.)
- Visualization of data from multiple sources in mapping interfaces:
  - Easier to consume
  - Faster app deployment



- Optimized reliability-centered maintenance processes [using SAP ASPM](#)
- Gained operational efficiency by adopting proactive maintenance approach [with SAP PAI](#)
- Increase efficiency by optimizing labor planning and [resource management](#)



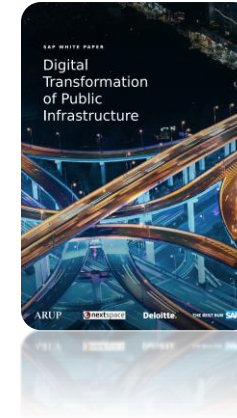
- Created a [digital twin of a bridge using SAP PAI](#), delivering real-time insight into the bridge's behavior, warning of potential structural failures
- What-if analysis for planned bridge maintenance and upgrades [to predict the various effects](#) of changes to bridge structure before they are made
- Ability to scale the [solution across multiple bridges](#), providing network-wide insights, helping prioritize maintenance across NPRA bridges



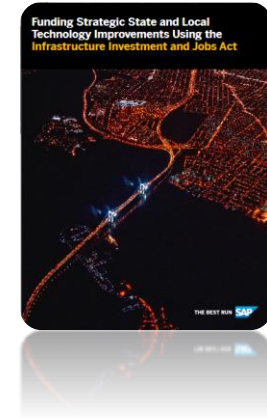


# Additional resources

- [SAP Intelligent Asset Management](#) Jam page
- [SAP Intelligent Real Estate Management](#) POV
- [SAP Enterprise Portfolio and Project Management](#) Jam Page
- [S/4HANA Cloud for projects, project collaboration \(aka. Project Intelligence Network\)](#) Jam Page
- [Lifecycle & Infrastructure Management](#) – Further information and webinar



Digital Transformation of Public Infrastructure



Funding Strategic S&L Technology Improvement using IIJA

## Learn how...



[Province Noord-Brabant](#) is enabling better decision-making with data-driven insights using SAP Real Estate Management



[Dubai Electricity and Water Authority](#) is completing its digital transformation to provide a digital backbone for the city of Dubai

[City of Cape Town](#) is improving quality and safety of their roads with Field Service Management



Germany's air traffic control company, [DFS](#) extends asset life and reduces disruptions using intelligent asset management solutions



# Customers are creating positive impact on environment and people with SAP Solutions

## Climate Action – Zero Emissions



Charging networks for sustainable mobility | SAP E-Mobility



**City of Zug, CH**  
Smart mobility platform | SAP Cloud Platform (BTP)  
[More](#)



**Fiscalité Brussels, BE**  
Low Emission Zone project with vehicle tax | SAP BRIM, SAP Citizen Engagement Accelerator



**Ministry of Defense, Germany - Sustainable Real Estate Management**  
Managing sustainable infrastructure projects [More](#)



**ERG Italy**  
Managing a sustainable supply chain with SAP Ariba solutions [More](#)



**Sustainable Entertainment Events**  
[Music of the Spheres World Tour App](#)

## Circular Economy – Zero Waste



**Ministry of Environment (MESTI) Ghana**  
Driving circular economy and minimizing waste in the country | SAP Rural Sourcing Management [More](#)



HM Revenue & Customs

**HMRC UK**  
Administration of UK Plastic Packaging Tax | SAP Tax and Revenue Management [More](#)



**United Nations OCHA** | Improved the coordination of disaster relief missions and humanitarian outcomes based on SAP Business Technology Platform [More](#)



**City of Cape Town, SA**  
Public Safety Platform | Emergency Policing and Incident Command [More](#)



**New South Wales Rural Fire Service**  
A data-driven approach to better respond to bushfire emergencies [More](#) | [BTS](#)

## Social Responsibility – Zero Inequality



**Environment Protection Authority Victoria** [More](#)

**Employee Health and Safety**  
Ensuring employee health and wellbeing with solutions for incident management, occupational health and employee safety



South Australian Police



Victoria Police



Australian Federal Police

## Emergency and Disaster Management



Kanton Zürich

**Kanton Zurich, CH**  
SAP Robotic Process Automation supported payments of COVID-19 benefits



**Sanctuary Care, UK** | Awarded for best socially Sustainable project with Pandemic Analytics Response [More](#)



**German Red Cross** | Safeguarding the COVID-19 vaccination mission in the state of Saxony with speed and agility [More](#)



**Morocco Ministry of Health** | Saving lives in a pandemic with a real-time COVID-19 monitoring system [More](#)



Follow us



[www.sap.com/contactsap](http://www.sap.com/contactsap)

© 2018 SAP SE or an SAP affiliate company. All rights reserved.

No part of this publication may be reproduced or transmitted in any form or for any purpose without the express permission of SAP SE or an SAP affiliate company.

The information contained herein may be changed without prior notice. Some software products marketed by SAP SE and its distributors contain proprietary software components of other software vendors. National product specifications may vary.

These materials are provided by SAP SE or an SAP affiliate company for informational purposes only, without representation or warranty of any kind, and SAP or its affiliated companies shall not be liable for errors or omissions with respect to the materials. The only warranties for SAP or SAP affiliate company products and services are those that are set forth in the express warranty statements accompanying such products and services, if any. Nothing herein should be construed as constituting an additional warranty.

In particular, SAP SE or its affiliated companies have no obligation to pursue any course of business outlined in this document or any related presentation, or to develop or release any functionality mentioned therein. This document, or any related presentation, and SAP SE or its affiliated companies' strategy and possible future developments, products, and/or platforms, directions, and functionality are all subject to change and may be changed by SAP SE or its affiliated companies at any time for any reason without notice. The information in this document is not a commitment, promise, or legal obligation to deliver any material, code, or functionality. All forward-looking statements are subject to various risks and uncertainties that could cause actual results to differ materially from expectations. Readers are cautioned not to place undue reliance on these forward-looking statements, and they should not be relied upon in making purchasing decisions.

SAP and other SAP products and services mentioned herein as well as their respective logos are trademarks or registered trademarks of SAP SE (or an SAP affiliate company) in Germany and other countries. All other product and service names mentioned are the trademarks of their respective companies.

See [www.sap.com/copyright](http://www.sap.com/copyright) for additional trademark information and notices.