



SAP Enterprise Support Value Maps

Security

SAP Services and Support
December, 2022

PUBLIC



SAP Enterprise Support Value Maps

SAP Enterprise Support value maps – an empowerment and support program, which leads you through the knowledge, skills, experts and services needed to address business challenges and adopt intelligent technologies. Learn more [here](#).



Program Offerings

- **Prescriptive guidance** - Structured content enables guided journey, simplification, and accelerated consumption of content
- **Expert access** - SAP experts provide prescriptive guidance, best practices and technology insight
- **Social Collaboration** - Forums allow you to exchange ideas and best practices with SAP experts and peers
- **Empowerment** - Interactive learning formats to empower you with the knowledge and skills for realizing your deployment strategy



User Benefits

- **Advance** digital skill level with interactive learning formats
- **Achieve** deployment and operational goals
- **Maximize** the value of your SAP solutions
- **Reduce** training expenditures
- **Get quick** advice from SAP experts and peers
- **Easy** access to latest news and releases
- **Access** to virtual events with leading experts
- **Record** of learning accomplishments

Available value maps

SAP S/4HANA	SAP SuccessFactors HXM Suite	SAP Business Technology Platform	Application Lifecycle Management
SAP S/4HANA Cloud, public edition	SAP Analytics Solutions	Business Process Transformation	Business Process Improvement
SAP S/4HANA Cloud, private edition	SAP Customer Experience solutions	Data Volume Management	Security
		SAP Digital Supply Chain	SAP Ariba solutions

SAP Enterprise Support Value Map for Security

Triggers

This value map guides you through the different sources of information, tools, and services available from SAP Enterprise Support to help you efficiently build and run your SAP systems and landscapes in a secure manner.



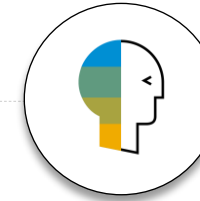
Learn

about security fundamentals



Secure

your SAP Solution Manager and gain benefits from all the related security tools



Obtain

knowledge about security patch management



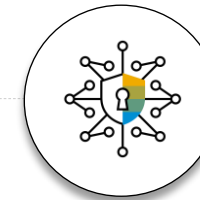
Ensure

security of SAP SuccessFactors



Manage

and monitor user access through SAP Cloud Platform Security Services



Secure

your SAP S/4HANA environment

SAP Enterprise Support Value Maps

How to register and access value maps in 2 steps

Step 1

Request access to SAP Learning Hub, edition for SAP Enterprise Support.
Watch [the video](#) and refer to our [tutorial](#) to learn how to sign up and use the hub.
If you are already registered you should use 'Access Value Maps' button.

Sign Up



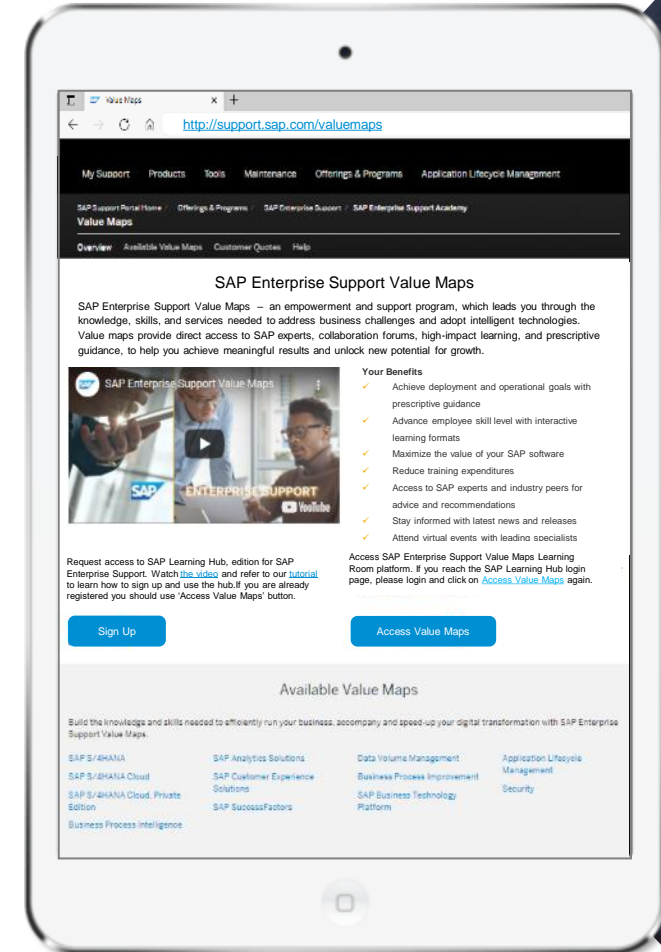
Step 2

Access SAP Enterprise Support Value Maps Learning Room platform. If you reach the SAP Learning Hub login page, please login and click on [Access Value Maps](#) again.

Access Value Maps



| Learn more: <https://support.sap.com/valuemaps>



SAP Enterprise Support Value Maps

Navigate through the main learning room



Get started with the main value maps group



Select the topic of your interest



Get empowered for RISE with SAP

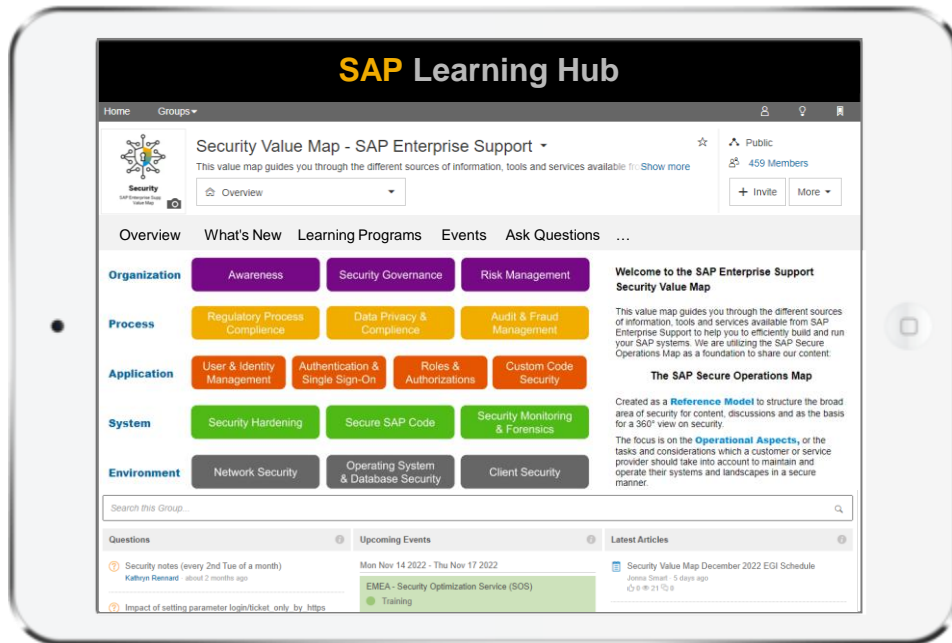


Ask a question or request a call with our experts

SAP Enterprise Support Value Maps

Explore the value map for Security

This value map guides you through the different sources of information, tools, and services available from SAP Enterprise Support to help you efficiently build and run your SAP systems and landscapes in a secure manner.



- Eliminate basic risks and improve your overall security
- Create your own security baseline and thresholds for alerts
- Keep track of your security notes
- Learn about SAP's security and privacy standards and Web-based SSO
- Secure the user access across your landscape
- Keep your SAP S/4HANA environment protected
- Get deep knowledge of SAP SuccessFactors and SAP Cloud Platform security
- Learn how SAP helps customers to be EU-GDPR-compliant



Complete your learning and empowerment path for various security topics by accessing set of enablement content



Ask questions to get quick advice from SAP experts and industry peers



Request a call to get personalized guidance



Sign up for upcoming events and stay in the know with our topic-specific articles written by leading product and support specialists

SAP Enterprise Support Value Map for Security Learning Journeys

A **learning journey** is an interactive visual guide designed to help you complete your learning and empowerment path for a particular SAP topic by exploring, filtering, and accessing a curated set of SAP Enterprise Support offerings and learning assets.

SAP Secure Operations Map - Organization Layer

Learn about the foundation that sets the stage for a secure organization, providing the awareness, governance, and solutions to support overall security policies.

[Access learning journey](#)

SAP Secure Operations Map - Process Layer

Learn about security compliance, like regulatory compliance and legal demands coming from the various jurisdictions SAP systems are operated in, in addition to audit requirements.

[Access learning journey](#)

SAP Secure Operations Map - System Layer

System hardening, secure code and monitoring and forensics help ensure that application controls are not circumvented by lower level vulnerabilities. We will touch upon these topics in this journey.

[Access learning journey](#)

Security for SAP Solutions – Application Layer

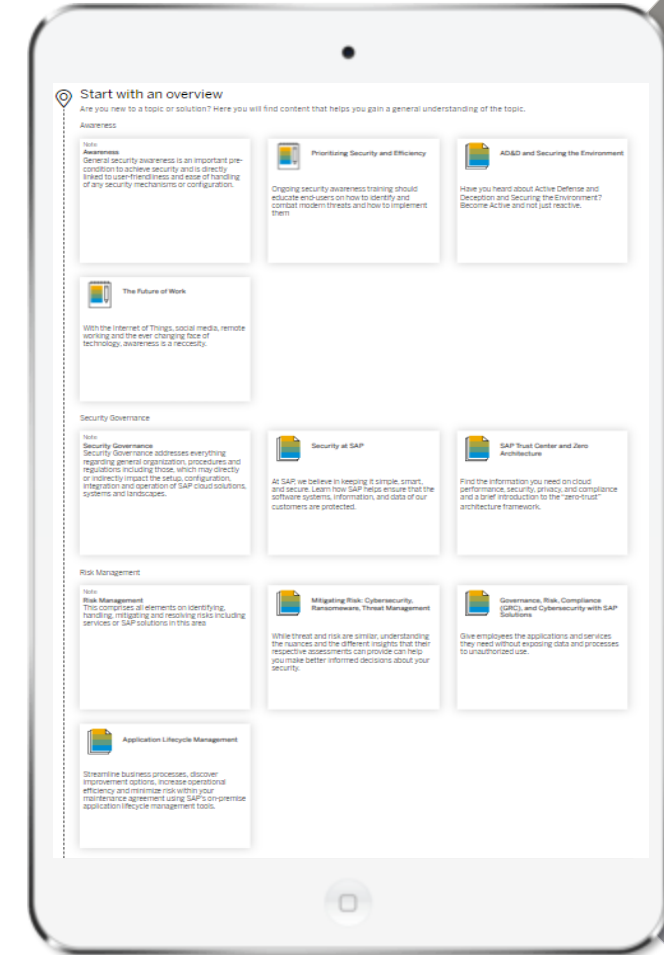
Learn to build and run your SAP systems and landscapes in a secure manner and efficiently.

[Access learning journey](#)

Security for SAP Solutions – Environment Layer

Learn about the non-SAP technical environment of SAP cloud offerings, solutions and systems.

Coming Soon!



SAP Enterprise Support Value Map for Security

Quick wins

A **learning program** will guide you through a set of expertly chosen SAP Enterprise Support offerings, assets, and tools in a sequential and interactive format to empower you to achieve the defined outcome.

General Data Protection Regulation at SAP

[Access Learning Program >>](#)

Ensure Security for SAP S/4HANA Cloud

[Access Learning Program >>](#)

Ensure SAP Business Technology Platform Security

[Access Learning Program >>](#)

Ensure Security for SAP Customer Experience Solutions

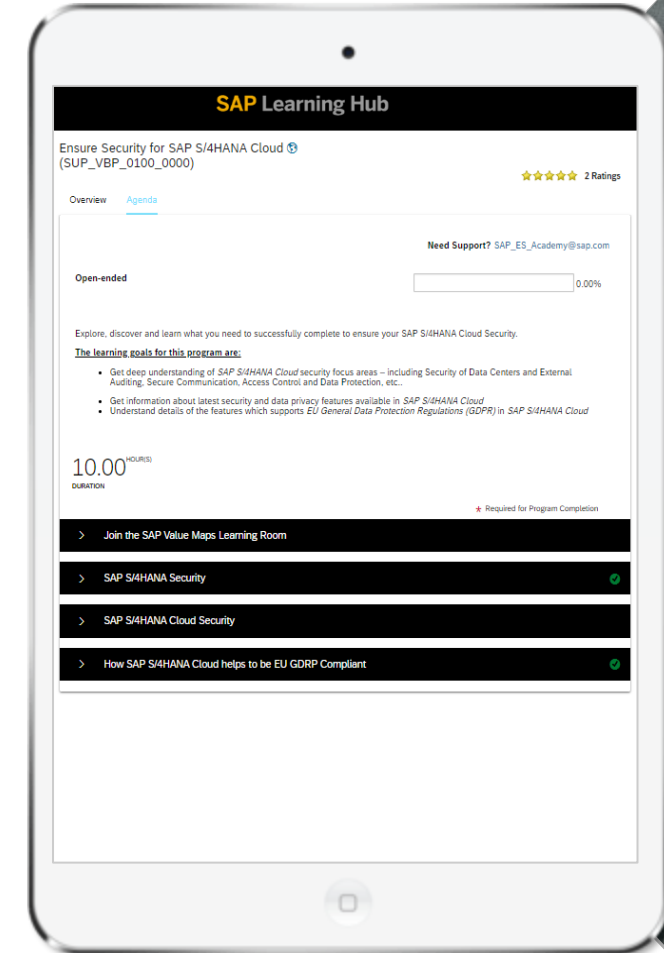
[Access Learning Program >>](#)


SAP Governance, Risk & Compliance (SAP GRC)

[Access Learning Program >>](#)

Ensure Security for SAP SuccessFactors

[Access Learning Program >>](#)






“SAP Enterprise Support empowered us with expert knowledge and best practices that helped us successfully manage our greenfield implementation of SAP S/4HANA. A complete project road map, access to a wealth of valuable learning assets, prompt issue resolution, and proactive assistance in mitigating risks supported our transformation journey.”

- Hervé Cusse, Head of SAP Center of Excellence, BDR Thermea Group

Find more SAP Enterprise Support success stories on [sap.com](https://www.sap.com)

THE BEST RUN 

Thank you.



Sign up for SAP Enterprise Support value maps

| <http://support.sap.com/valuemaps>

Contact information:

For further details, please contact your SAP Enterprise Support Advisor or send an e-mail to:

sapesvaluemaps@sap.com