

# ASUG New England Chapter

## SAP S/4HANA Solution Overview & Ensuring Success with RISE with SAP

Brijesh Patel  
Executive Advisor, SAP S/4HANA Center of Excellence  
June 6, 2023

PUBLIC

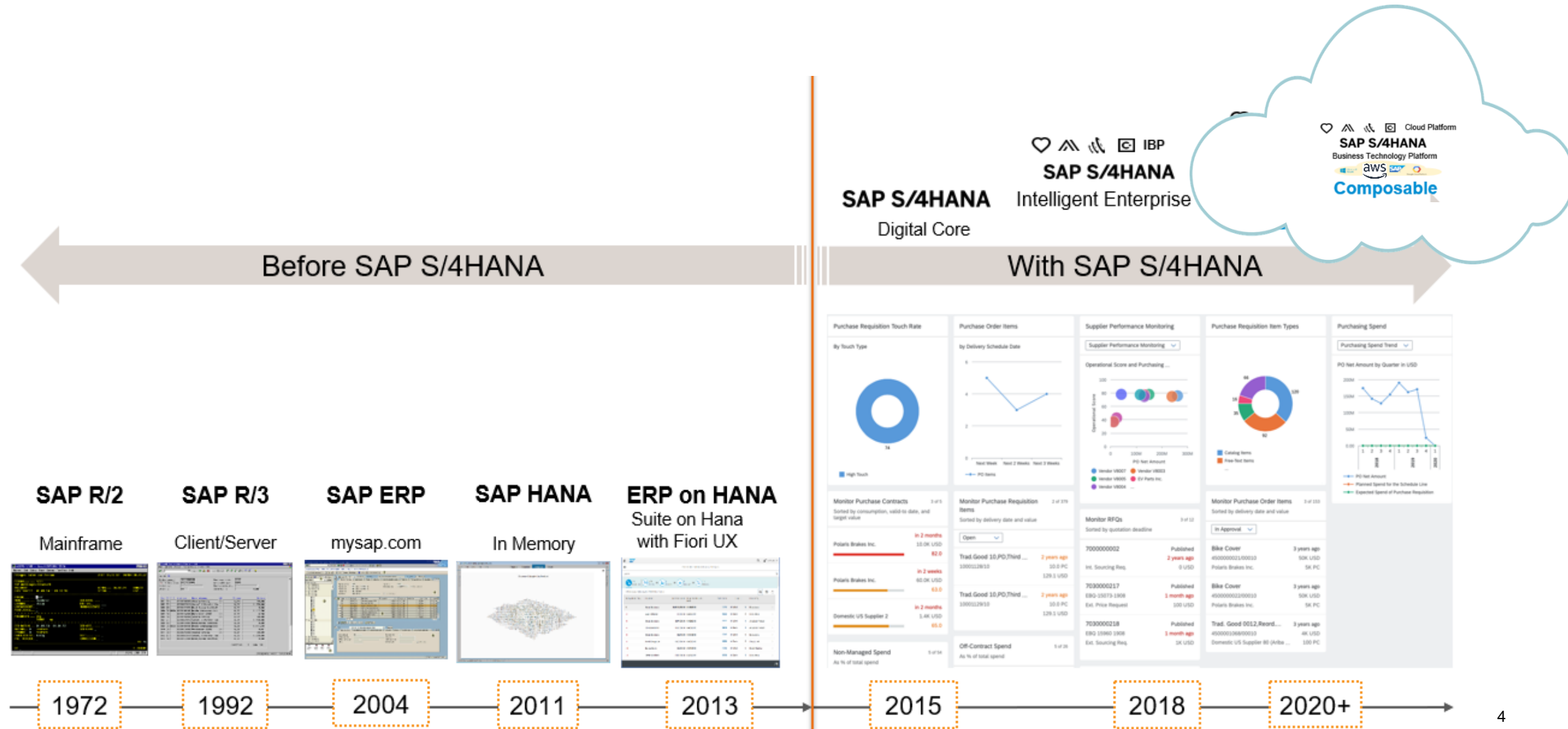
# Agenda

- Evolution of SAP ERP – from Past to Present
- What Makes S/4HANA Different from Legacy ERP
  - New Capabilities & Innovations
  - Where is R&D Going?
  - Current Adoption
- What Makes RISE with SAP S/4HANA Cloud, Private Edition Unique
- Planning Tools & Education Offerings
- Q&A

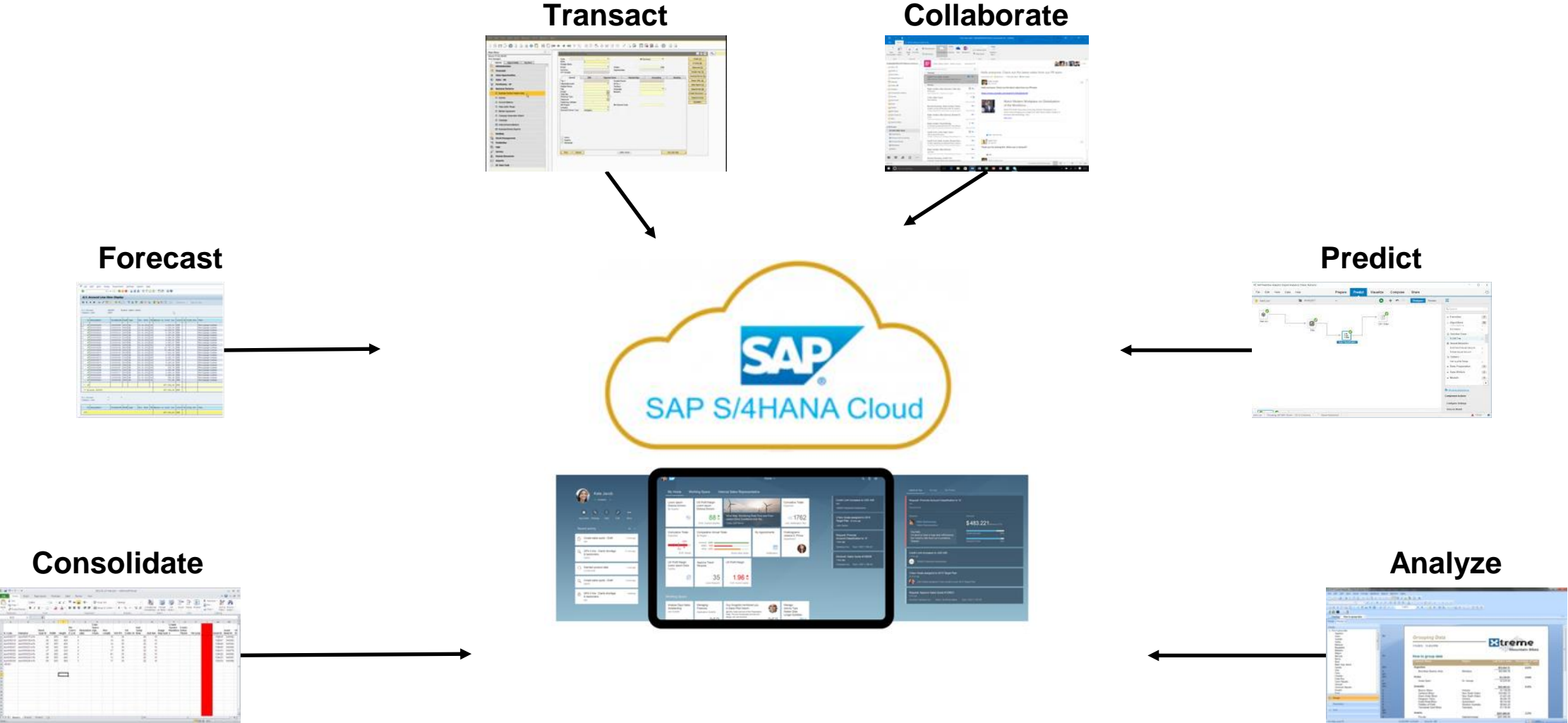
# Agenda

- **Evolution of SAP ERP – from Past to Present**
- What Makes S/4HANA Different from Legacy ERP
  - New Capabilities & Innovations
  - Where is R&D Going?
  - Current Adoption
- What Makes RISE with SAP S/4HANA Cloud, Private Edition Unique
- Planning Tools & Education Offerings
- Q&A

# History & Evolution of SAP ERP



# Business Activities & Essentials

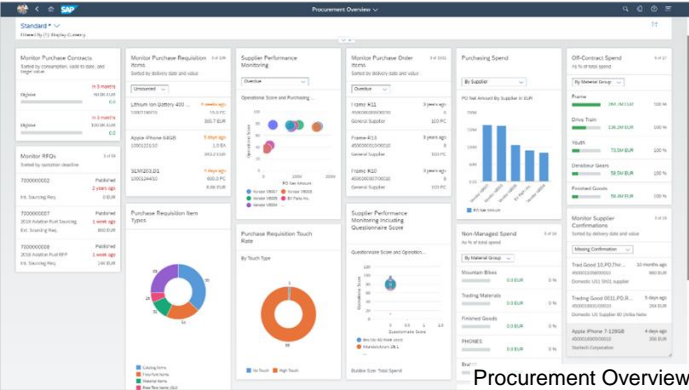


# Agenda

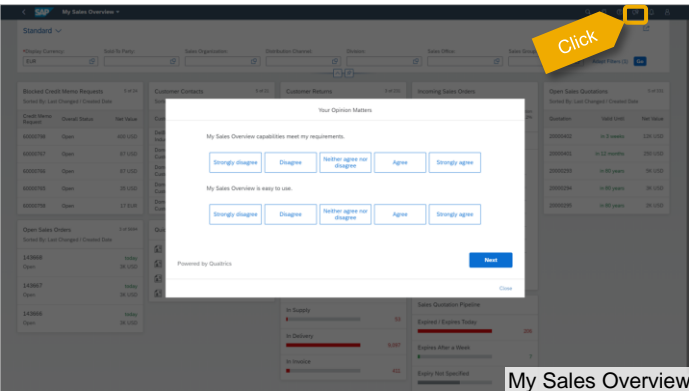
- Evolution of SAP ERP – from Past to Present
- **What Makes S/4HANA Different from Legacy ERP**
  - New Capabilities & Innovations
  - Where is R&D Going?
  - Current Adoption
- What Makes RISE with SAP S/4HANA Cloud, Private Edition Unique
- Planning Tools & Education Offerings
- Q&A

# SAP S/4HANA: What is Different compared to SAP Business Suite (ECC)?

**Role-based Applications**  
for user and task related optimization

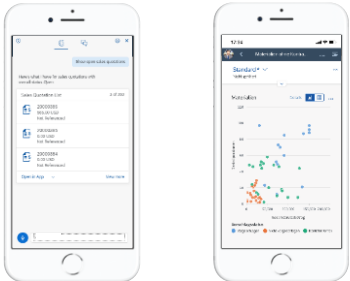


Procurement Overview



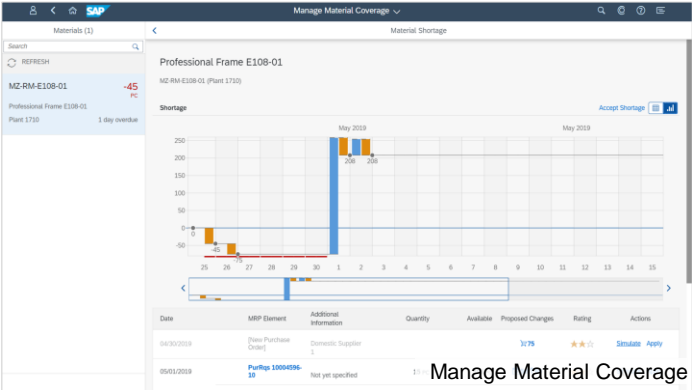
My Sales Overview

**Embedded Experience Management**  
for real-time feedback

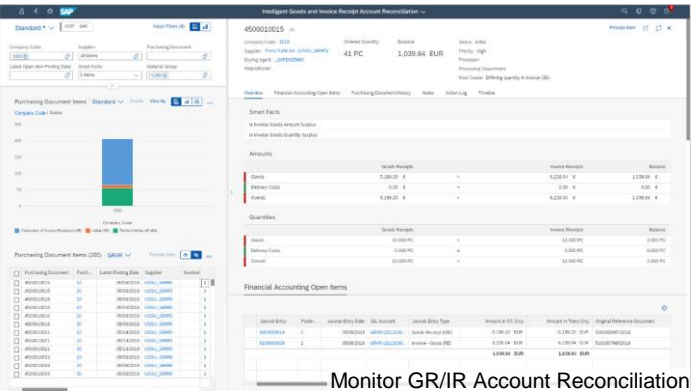


**Mobile UX with Digital Assistance**  
for device independent use

**Embedded Analytics**  
for simulation, prediction & insight to action



Manage Material Coverage

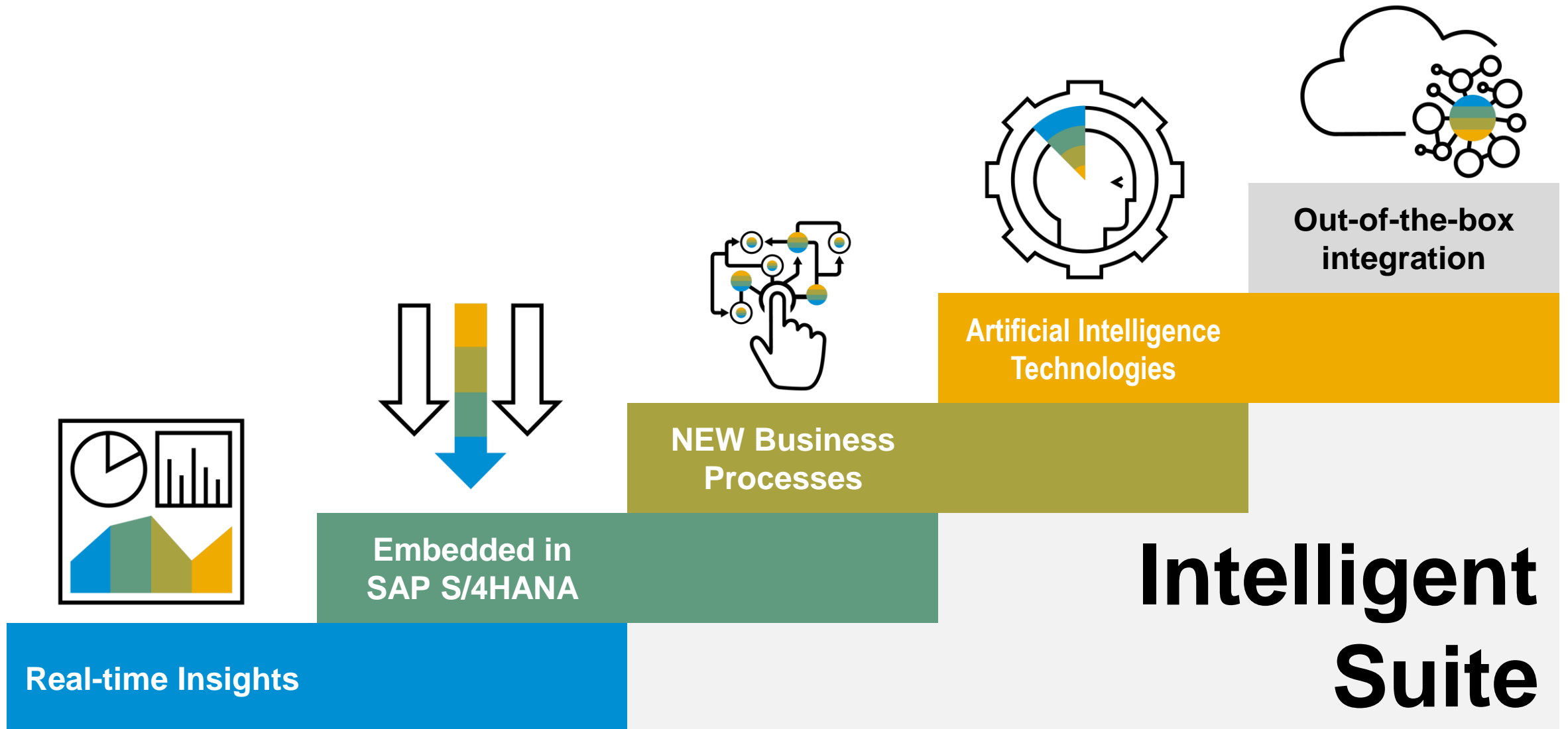


Monitor GR/IR Account Reconciliation

**Machine Learning**  
for automation and decision support

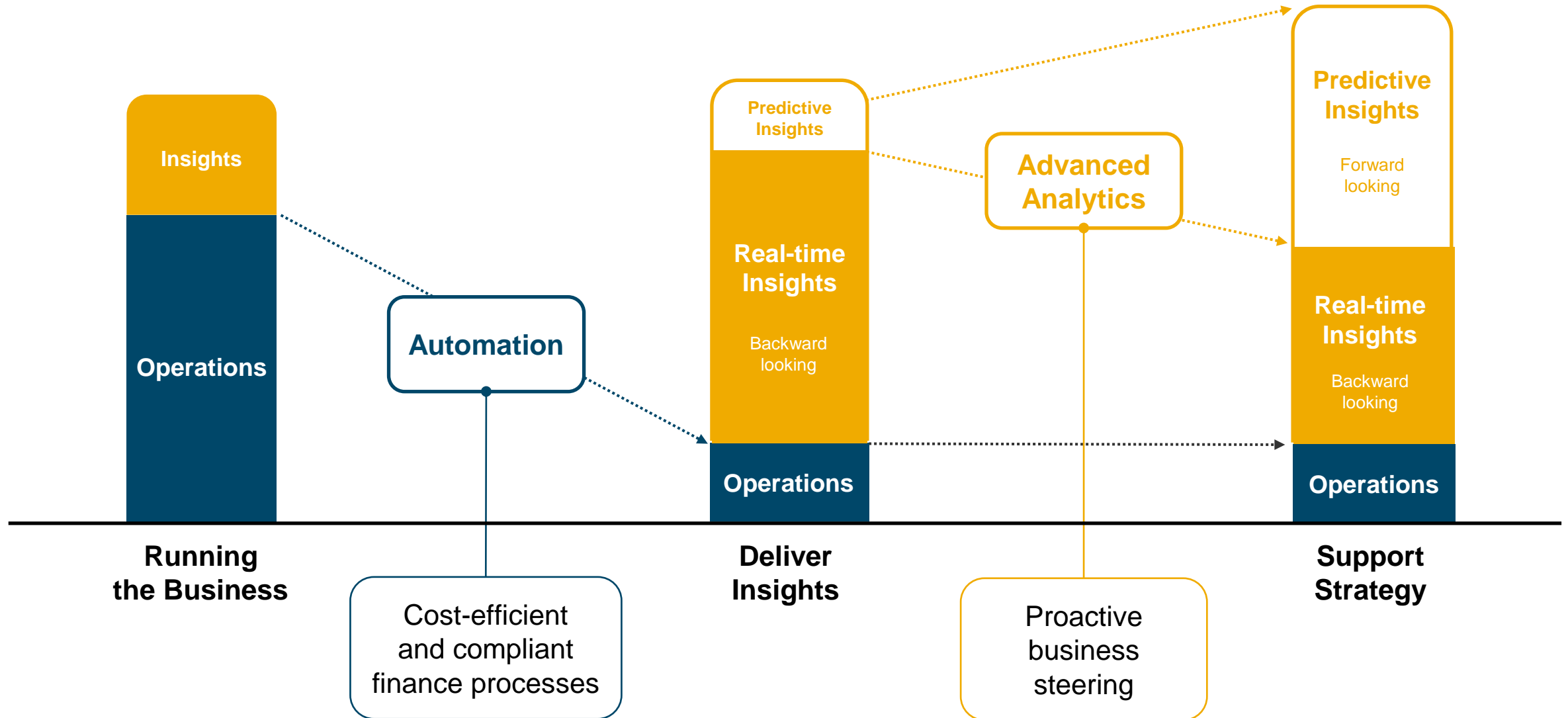


# Value Realization is Dependent on Company Goals & Objectives










# SAP's Vision for Transformation



# Intelligent Capabilities for the Intelligence Era

SAP S/4HANA: The most comprehensive, intelligent ERP suite

 <b>Procurement</b> <ul style="list-style-type: none"><li>• Overview Page &amp; Analytics</li><li>• Procurement Hub</li><li>• Predictive Contract Consumption</li><li>• GR/IR Reconciliation</li></ul>	 <b>Sales</b> <ul style="list-style-type: none"><li>• Order Fulfillment &amp; Delivery Performance</li><li>• One Single Invoice</li><li>• International Trade</li><li>• Predictive Delivery Perform.</li><li>• Auto Sales Order Creation</li></ul>	 <b>Supply Chain</b> <ul style="list-style-type: none"><li>• Realtime Inventory</li><li>• Embedded TM</li><li>• Embedded EWM</li><li>• Advanced ATP</li><li>• Predictive Stock in Transit</li></ul>	 <b>Manufacturing</b> <ul style="list-style-type: none"><li>• Live MRP</li><li>• Detailed Scheduling Optimizing with PPDS</li><li>• Demand Driven MRP</li><li>• Complex Manufacturing</li></ul>	 <b>R&amp;D</b> <ul style="list-style-type: none"><li>• Commercial Project Mgmt.</li><li>• Project &amp; Portfolio Mgmt.</li><li>• Variant Configuration</li><li>• Recipe Dev &amp; MGT</li></ul>
---	---	--	--	--

## SAP S/4HANA

 <b>Finance</b> <ul style="list-style-type: none"><li>• Realtime Finance (UGL)</li><li>• Group Reporting &amp; Consol.</li><li>• Commodity Mgmt.</li><li>• Compliance Framework</li><li>• Cash App</li><li>• Intelligent Intercompany Rec</li></ul>	 <b>Service</b> <ul style="list-style-type: none"><li>• New Customer Management, Service Core Option</li><li>• Multi-Channel Interaction Center</li><li>• Service Ticket Automation</li></ul>	 <b>Asset Mgmt.</b> <ul style="list-style-type: none"><li>• New Geographical Enablement</li><li>• Report &amp; Repair Malfunction</li><li>• Asset Mgmt. for Resource Scheduling</li></ul>	 <b>Cross Functions</b> <ul style="list-style-type: none"><li>• Legal Content Management</li><li>• GDPR Tools</li><li>• Conversational AI as Digital Assistant</li></ul>	 <b>25 Industries</b> <ul style="list-style-type: none"><li>• Key Industry functions embedded (Retail etc)</li><li>• GxP Services</li><li>• ATTP</li><li>• Material Segmentation</li></ul>
--	--	--	---	---

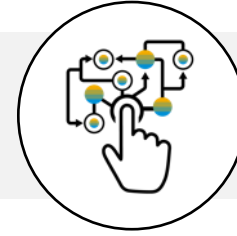
# SAP Build Process Automation Use Cases



Automate manual, repetitive tasks



Enable "lights-out" automation of high-volume process steps



Automatically aggregate data from multiple systems

Lead to cash

Capital expenditure approvals

Invoice approvals

Account opening

Hire to retire

Relocation

Visa permits

HR employee self-services

Management of contingent workers

Design to operate

Master data record updates

Document approvals

Lead-generation workflows

Source to pay

Return-order process

Incident management

Procurement data collection



Digitalize manual and semi-automated processes



Extend and adapt standard application flows



Automate comprehensive cross-application workflows

77% of the world's transactions run through SAP systems

#1 ERP | #1 Procurement | #1 Supply Chain | #1 Human Capital | #2 CRM

# Customers can get Started Now

Use cases increasing the automation rate in your SAP applications

## Process automation for SAP S/4HANA

- [Production order operation confirmation](#)
- [Create purchase requisitions from Excel](#)
- [Automate sales orders creation from Excel](#)
- [Add decision logic to sales order management process](#)
- [Automate invoice processing with intelligent document information extraction](#)
- [Mass update asset master data](#)
- [Fixed asset transfer approval](#)

## Process automation for SAP Ariba

- [Automate the extraction of purchase order information](#)
- [Automate paper-based invoice posting](#)

## Process automation for SAP SuccessFactors

- [Improve applicant data handling](#)
- [Automate offer letter distribution](#)
- [Automatically fill in pre-screening questions](#)
- [Bulk Updating Categories in SAP SuccessFactors Learning](#)



*Click the links to watch the use case videos on YouTube*

# Achievements by our Customers

## Using Process Automation Solutions from SAP

### High tech



- Improved customer service and consistency within one month ([Hewlett Packard Enterprise](#))
- Reduced time for billing processing by 83% and realized approximate savings of US\$200,000 for a new billing system ([Chunghwa Telecom](#))

### Mill products



- Processing 500 orders per batch for improved order closing; before: entire day's work for one employee; now: two-minute task for a bot ([REHAU](#))
- Refocusing 175 hours per month on high value in the customer invoicing process ([Aço Cearense Industrial](#))

### Automotive



- 30% faster time to market due to quicker development timeframe ([Toyota](#))
- Management of price changes from parts suppliers with automated updates to SAP ERP; 2x productivity improvement and 30% more savings ([AGCO](#))

### Healthcare



- Bot processing of 100,000+ sales orders to bring pharmaceutical products to customers ([Zuellig Pharma](#))
- 360-degree visibility and coordinated task management ([Zuellig Pharma](#))

### Manufacturing



- Intelligent bot processing of 6,000 documents each year without any human intervention ([Villeroy & Boch](#))
- Support for collaboration and enriched user experience with 2D and 3D visualizations sample bullets ([KAESER Kompressoren](#))

### Chemicals



- Reassignment of 4,700 labor hours each year from repetitive tasks to high-value activities, increased efficiency in financial reporting by 90%+ ([Wanhua Chemicals](#))

### Utilities



- 90% faster data entry for job requisition and 50% time savings on plant inspections ([Uniper](#))
- Business users spending 80% less time creating workflow authorization requests ([Uniper](#))

### Oil & gas



- Centralized app to manage operations and gain real-time visibility into tasks; integrated 15+ systems; improved productivity by 15% ([Murphy Oil Corporation](#))
- Streamlined asset inspection processes; 25% reduction in back-office data processing effort; 100% compliance in asset attribute capture ([TasNetworks](#))

### Media, sports & entertainment



- 60% automation rate in sales order processing and 100% replacement of legacy solutions ([Alma Media](#))
- Improved staff productivity by enabling them to complete core functions in the field; 87% guest satisfaction with helpfulness of staff ([Taronga Conservation Society](#))

### Learn more



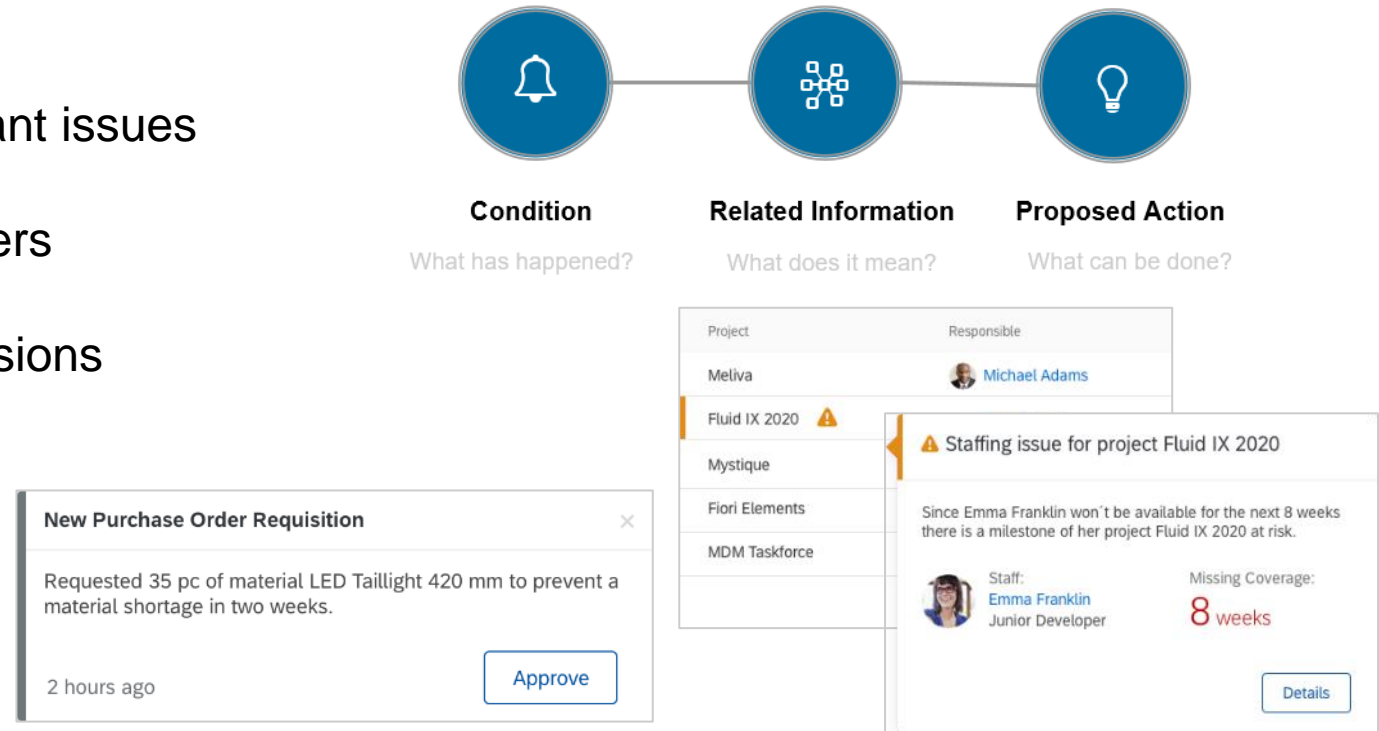
[See how customers are automating processes with SAP](#)



# Situation Handling

... makes **SAP S/4HANA** intelligent by simplifying interaction and increasing automation

- Automatically identify urgent and important issues
- Bring situations to the right groups of users
- Intelligent support to make the right decisions
- Monitor and adjust the situations
- Integrate for automation



**“Situation” captures a current business situation, its circumstances, and results.**

# Undiscovered Issues in Business Situations and their Potential Consequences

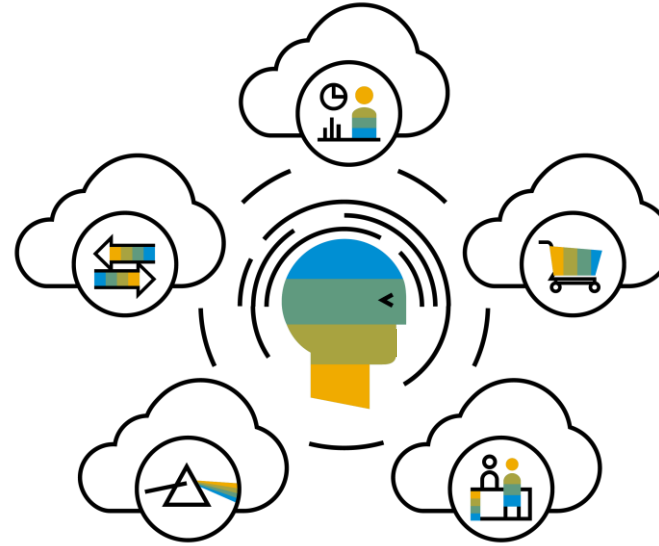
Pending confirmations

Exceeding budgets

Deviating turnover rates

Material exceptions

...



→ Manual user checks & recall of situations

Nearing deadlines

Missing approvals

Expiring contracts

Diverging demand planning

...



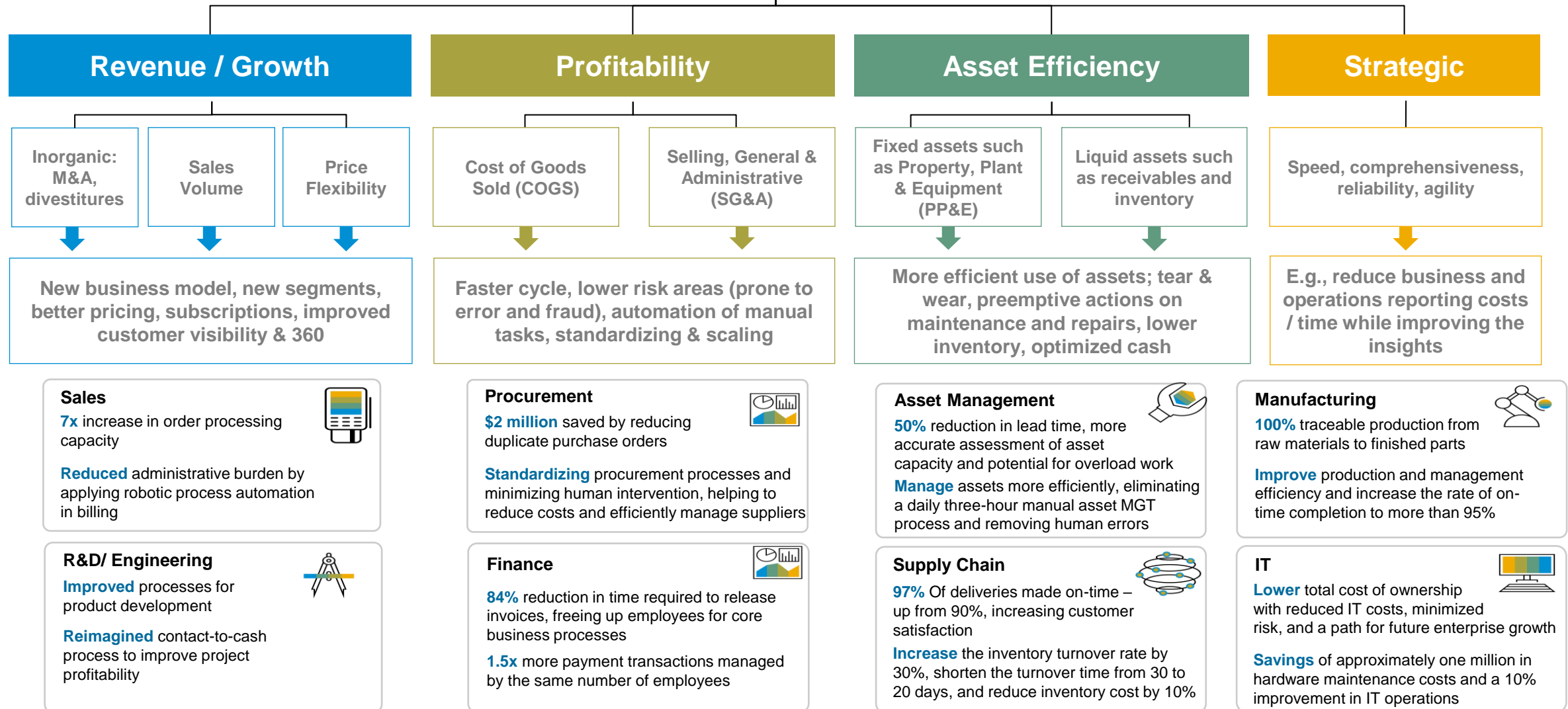
**Possible consequences:**  
(cascading effects)

- Avoidable costs (overpriced material, overstaffed processes, contract penalties)
- Frustrated staff (cumbersome/lengthy processes, missing decision support)
- Loss of customers (inappropriate product portfolio decisions, overpriced products)

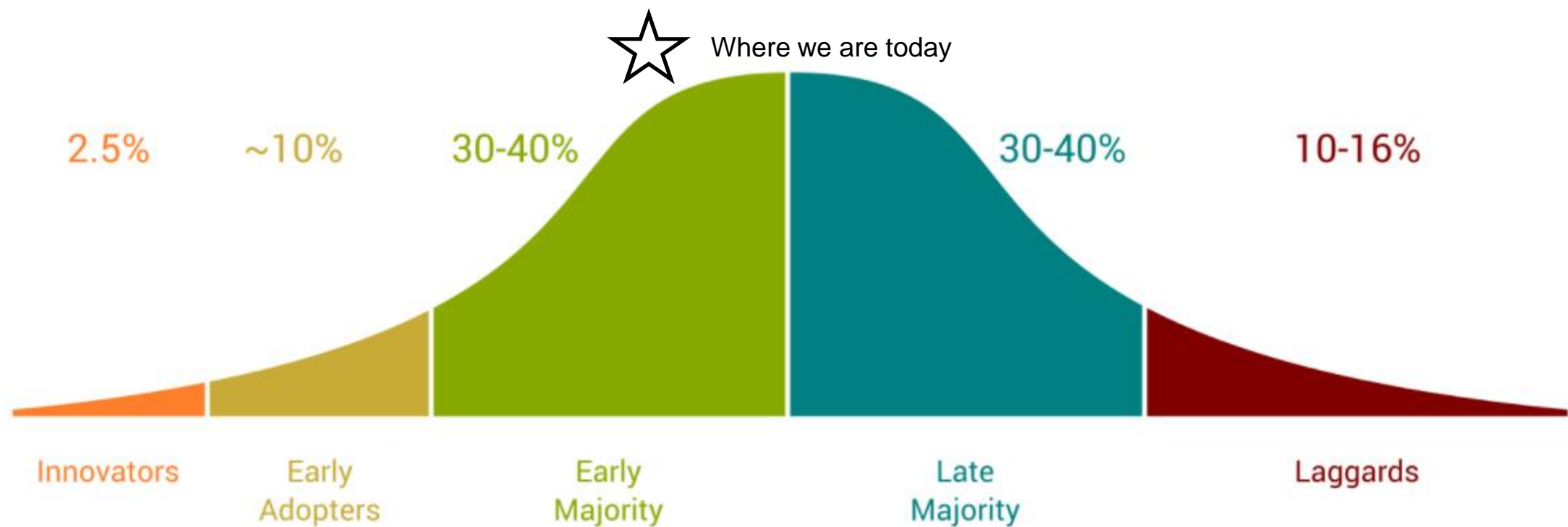


# Actual Value Realized by Customers who moved to SAP S/4HANA

## Key Stakeholder Value Levers



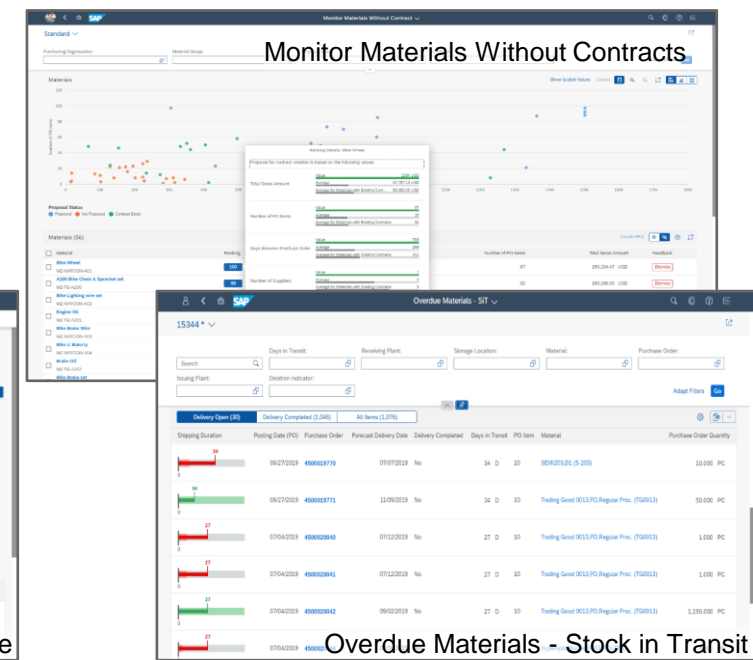
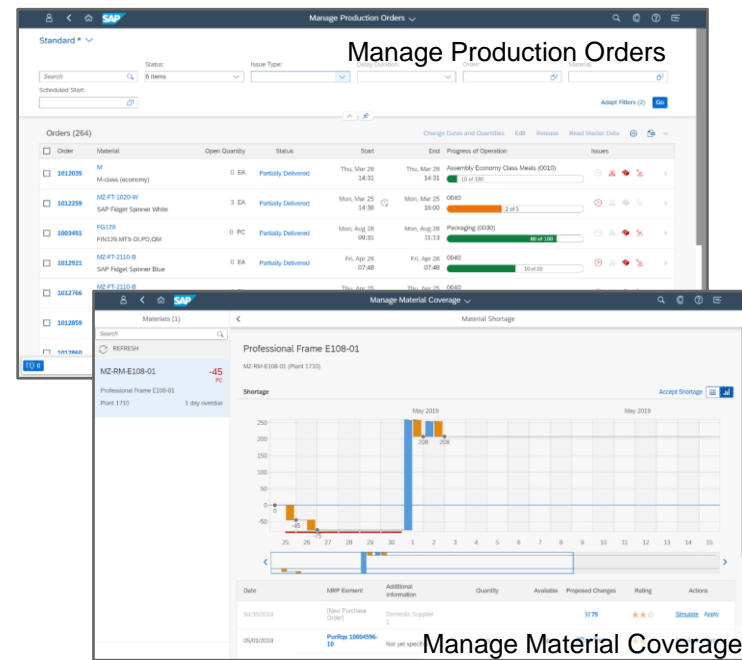
# SAP S/4HANA Adoption within SAP ERP (ECC) Installed Base



# In Summary...What Makes S/4HANA Cloud different compared to ECC

## Built for Scale, People & Innovation

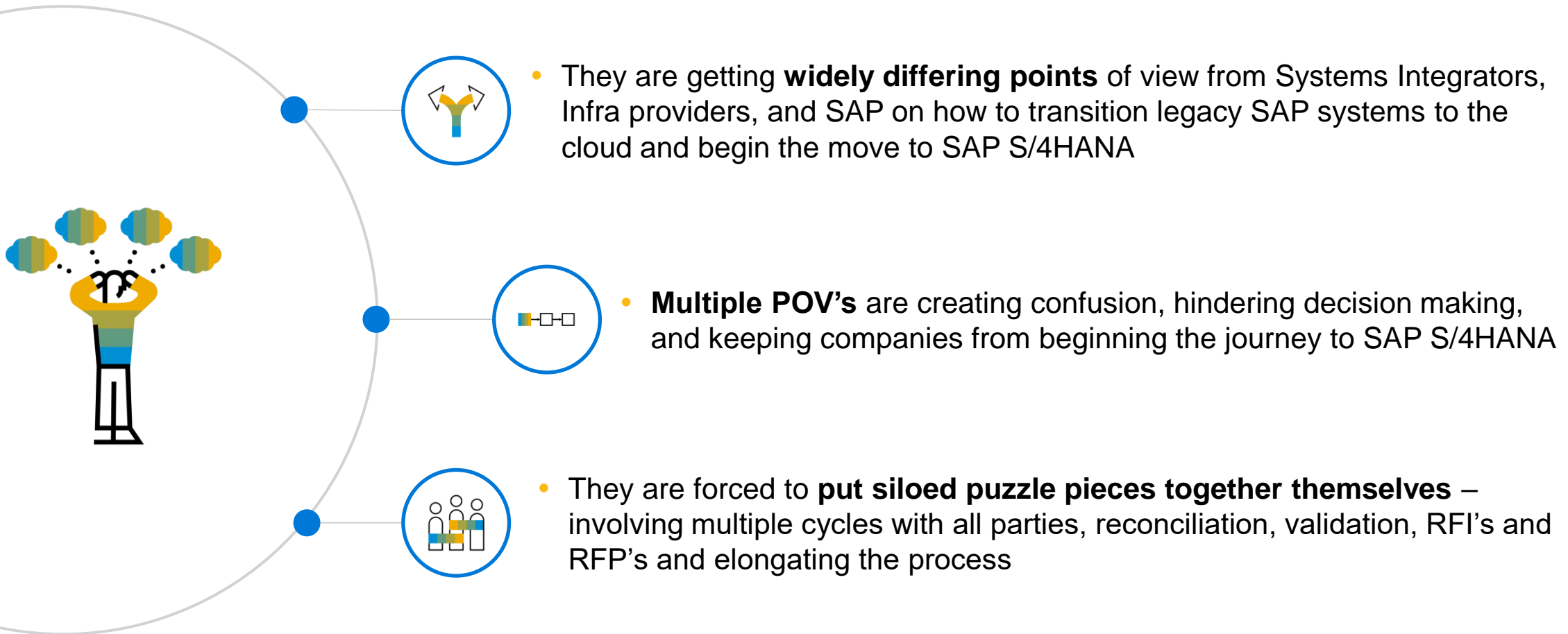
- Simplified architecture and streamlined data models
- In-the-Moment, Embedded Analytics
- New UX available on any device
- Business Suite Apps simplified and moved into Core
- Industry solutions moved into Core
- Intelligent scenarios baked into Core
- Networked ERP with native integration with Cloud LoB solutions leveraging SAP BTP
- Software, support, TMS and infrastructure on one subscription contract with guaranteed SAP uptimes
- Dedicated SAP resources and unrivaled Run phase services



# Agenda

- Evolution of SAP ERP – from Past to Present
- What Makes S/4HANA Different from Legacy ERP
  - New Capabilities & Innovations
  - Where is R&D Going?
  - Current Adoption
- **What Makes RISE with SAP S/4HANA Cloud, Private Edition Unique**
- Planning Tools & Education Offerings
- Q&A

# Journey to SAP Cloud ERP – Customers want to move, *but....*



Customers **need clarity and a prescriptive harmonized set of recommendations**, leveraging industry best practices, and jointly backed by their strategic partners

# What Companies Consider When Selecting Cloud ERP

## Security & Compliance



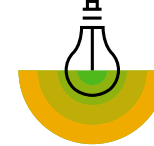
- Cloud security and compliance
- Backup and disaster coverage
- Data protection

## Total Cost of Ownership



- Fast implementation
- Automatic upgrade
- Pay-per-Service consumption model

## Innovation



- Continuous innovation
- Embedded system intelligence
- Business transformation enablement or support

## Standardized Processes



- Deep vertical business process coverage based on industry knowledge
- Built-in industry specifics

## Flexibility



- Configuration
- UI personalization
- On any devices

## Localization



- Local regulatory requirement compliance
- Language coverage

## Integration & Extensibility



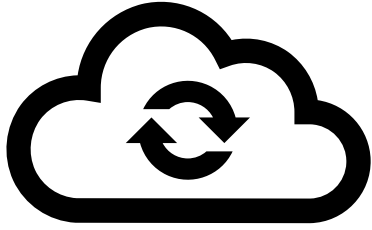
- Out-of-the-box integration for extended business processes
- Modular extensibility

## Trusted Partner



- Cloud business software experience
- Well-established and growing ecosystem

# RISE with SAP – Business Transformation as a Service



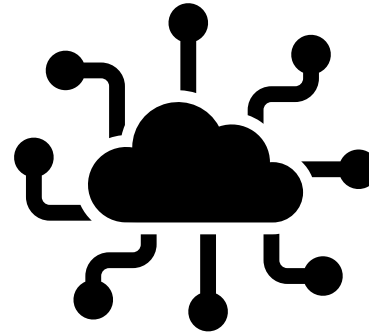
## Cloud Based ERP

- Public Edition or Private Edition hosted on your Cloud Provider of choice.



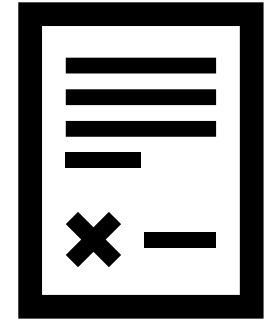
## Business Process Intelligence

- Analyze, design, simulate and improve existing processes to maximize the value of your transition to the cloud.



## Business Technology Platform

- Analytics
- Integration
- Application Development
- Intelligent Technologies



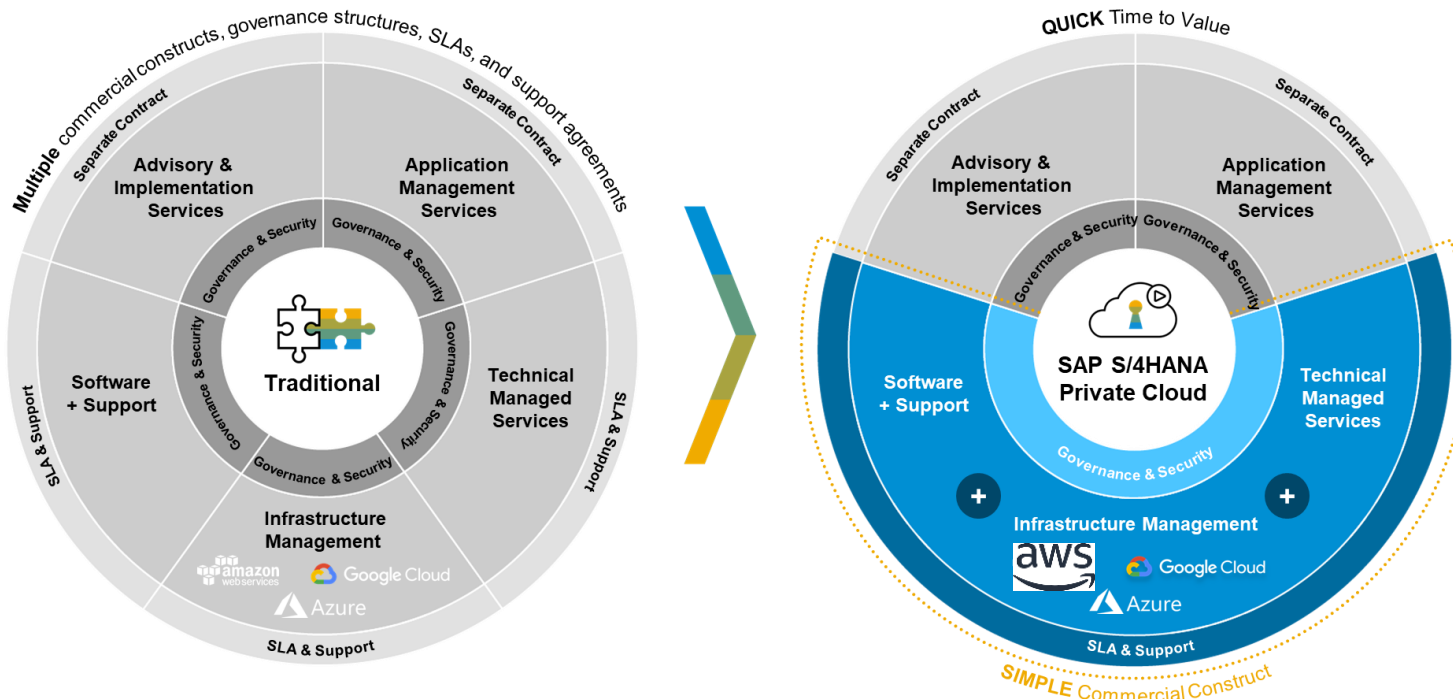
## One Contract

- Manage SLAs, Operations and Issue Management with one Agreement



# One Commercial Construct: ERP, Infrastructure, and Technical Services

**RISE  
WITH  
SAP**



**One  
Governance**

**One Security**

**One SLA**

**One Support**

## SAP Software + Enterprise Support Cloud Editions

- SAP Software
- SAP Software Support

## Infrastructure + Infrastructure Management

- Infrastructure based on Hyperscaler or SAP Data Center
- Infrastructure Management
- High Availability & Disaster Recovery
- Reference Architecture

## Technical Managed Services

- Technical System Operations including OS, Storage, Network, Database, SAP Basis
- Technical Landscape Deployment
- Technical Upgrade Installation
- Business Continuity Services
- Security Management Services incl. SIEM
- Continuous Service Planning & Review

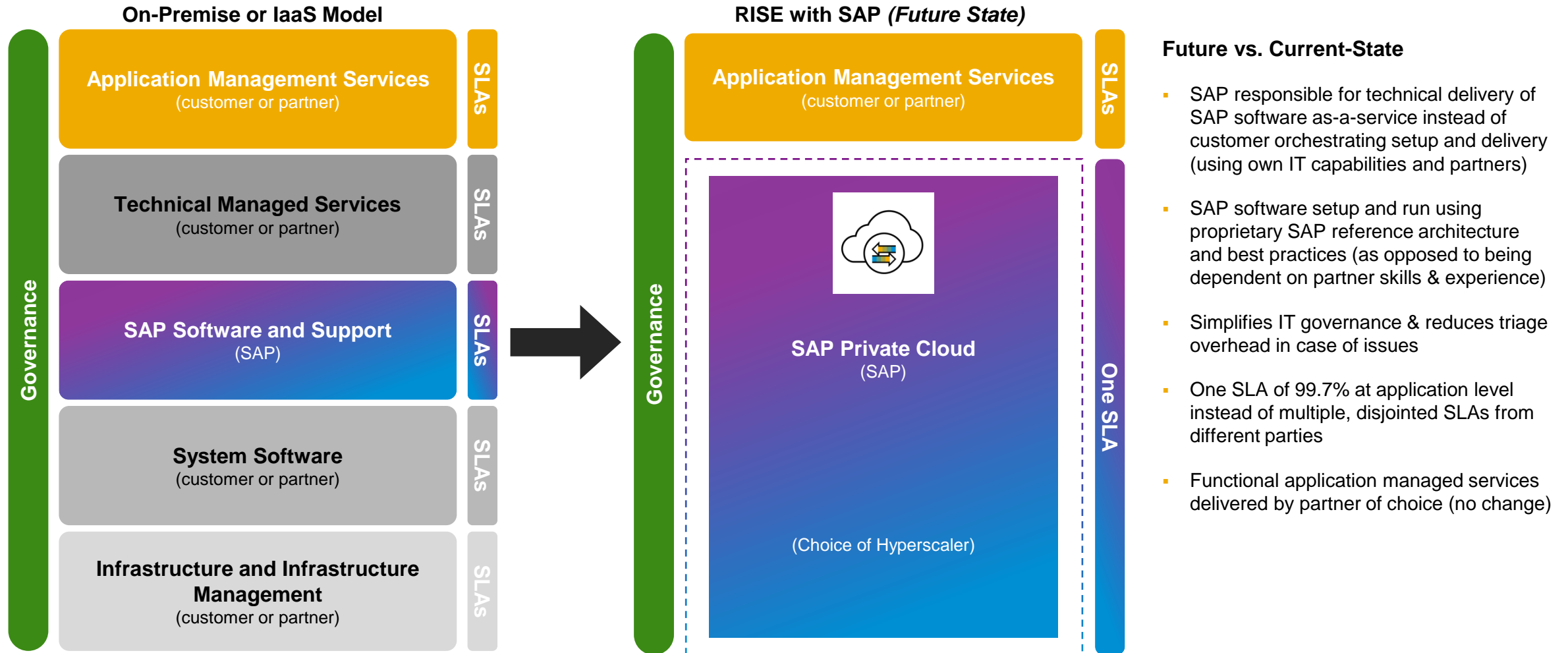
## Outcomes

- **Subscription fee** for software, infrastructure and technical managed services
- **SLA commitment** for full solution stack
- Technical flexibility to **right-size SAP systems landscape**
- **Commercial flexibility**
- **Technical Upgrades are included**

## Single SLA

- **System availability SLA** – 99.7% for Prod
- **System availability SLA** – 99.5% for Non-Prod
- **DR RTO**: up to 4 hrs and **RPO**: up to near 0 min
- **Support Hours** 24x7 PROD, 24x5 Non-PROD

# SAP Takes Ownership for Technical Delivery of its Applications with one SLA



# The Big Picture: SAP S/4HANA Cloud, Private Edition includes Services on top of IaaS to Run SAP Reliably & Cost-Effectively with One-Stop-Shop

Access 100% of these embedded value elements right from the start, even for small systems.

Technical Systems Operations	High Availability & Business Continuity	Service & Release Planning	Advanced Technical Operations
<ul style="list-style-type: none"><li>\$\$\$ Hyperscaler Enterprise Support</li><li>\$ Hyperscaler Mandatory components for SAP</li><li>\$ Security - Patch Management</li><li>\$ Security - OS/DB/App hardening</li><li>\$ Security - SIEM &amp; Incident management</li><li>\$ Security - Admin Access via WTS</li><li>\$ Monitoring – Hyperscaler Log Streaming</li><li>\$ Monitoring – Hyperscaler Log Analytics</li><li>\$ Monitoring – Hyperscaler Logging</li><li>\$ Monitoring - Audit</li><li>\$ Monitoring - Dashboards/Reporting</li><li>\$\$ Application Monitoring</li><li>\$\$ Database Monitoring</li><li>\$\$ Infrastructure Monitoring</li><li>\$\$ SAP Application Admin/Config</li><li>\$\$ SAP Database Admin/Config</li><li>\$\$ Infrastructure Admin/Config</li><li>\$\$ Security Admin/Config</li><li>\$ Hyperscaler Invoice Management</li><li>\$\$\$ Landscape Manager / Engagement Lead</li><li>\$ Provide CIFS share on LINUX</li><li>\$\$ Security – Manage Trust / SAML Providers</li><li>\$ SFTP Daemon setup</li></ul>	<ul style="list-style-type: none"><li>\$ DR Designing and SLA Definition</li><li>\$ Business Continuity Planning (SAP)</li><li>\$ Annual DR Drills</li><li>\$\$\$ Backup Storage (Primary &amp; Offsite)</li></ul>	<ul style="list-style-type: none"><li>\$ Governance &amp; Technical Oversight</li><li>\$\$ Release planning for the landscape</li><li>\$\$ App Version Upgrade – Technical Execution</li><li>\$\$ DB Version Upgrade – Technical Execution</li><li>\$ OS Upgrade – Technical Execution / Validation</li></ul>	<ul style="list-style-type: none"><li>\$ Operational Readiness Testing</li><li>\$ DR Implementation</li><li>\$ Networking - Subnetting</li><li>\$ Networking - Proxy</li><li>\$ Networking - Gateway Servers</li><li>\$ Networking - DNS</li><li>\$ Security – RBAC / Subscription Management</li><li>\$ Security - MFA</li><li>\$ Security - Pen Testing</li><li>\$ Security - Securing Endpoints / Integration</li><li>\$ Security - App/DB Encryption</li></ul>
<p><b>Included services in SAP Private Edition</b></p> <ul style="list-style-type: none"><li>\$\$\$ Large Costs Item</li><li>\$\$ Significant Costs Item</li><li>\$ Moderate Costs Item</li></ul> <p>Check <a href="#">Roles &amp; Responsibilities</a> for all services and more information</p>			
Best Practice Architecture	Technical Landscape Deployment	Add. Services with SAP Private Cloud	
<ul style="list-style-type: none"><li>\$ SAP Reference Architecture Design</li><li>\$ Compliance / Certifications</li><li>\$ Audits</li><li>\$ Capabilities Realignment</li><li>\$ Hyperscaler Trainings</li></ul>	<ul style="list-style-type: none"><li>\$ Deployment Automation</li><li>\$ OS Licenses</li><li>\$\$ Server Tools Licenses</li><li>\$\$ Landscape Management - LaMa</li><li>\$\$ Solution Manager FRUN</li><li>\$ Load Balancing</li><li>\$ End Point Protection / SSL cert exchange</li></ul>	<ul style="list-style-type: none"><li>\$\$ Customer initiated DB Restore</li><li>\$ Create indices for application tables</li><li>\$ Setup skeleton system for Model Company</li><li>\$ Install ODBC Drivers for external DB's</li><li>\$\$\$ System Refresh / Homogeneous Copy</li><li>\$ CSR Handling / SSL Configuration</li><li>\$\$ Client Creation / Deletion / Export - Import</li><li>\$\$ Setup Fiori Launchpad</li><li>\$ Activate Cloud Platform Services (ADS)</li><li>\$\$\$ ... and 64 other services ...</li></ul>	

# Organizational Advantages for Customers



Eliminate need to create security frameworks, operating models, and so on

---



Reduce third-party software costs (operating system, antivirus, resource management, monitoring)

---



No technical knowledge gap in supporting new SAP solutions as you move to SAP S/4HANA (the private edition includes technical managed services)

---



Avoid painful learning curve & ping pong b/t infra, support & operations in the case of issues

---



Fix first, ask later: SAP runs your SAP systems with a proactive approach

# Commercial Benefits for Customers



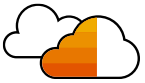
Ability to reallocate maintenance OpEx from on-premise to cloud subscription

---



Full Usage Equivalents (FUE) licensing based on a formula that balances costs more fairly by calculating heavy and light usage

---



No surprises – predictable subscription

---



Flexibility to cover future cloud demand

# +3,400 Total RISE with SAP Customers and Growing!



[SAP Customer Story Finder](#)

# SAP Enterprise Cloud Services (ECS)



SAP Enterprise Cloud Services

SAP Enterprise Cloud Services (ECS) supports customers throughout their cloud transformation and SAP S/4HANA adoption journey.

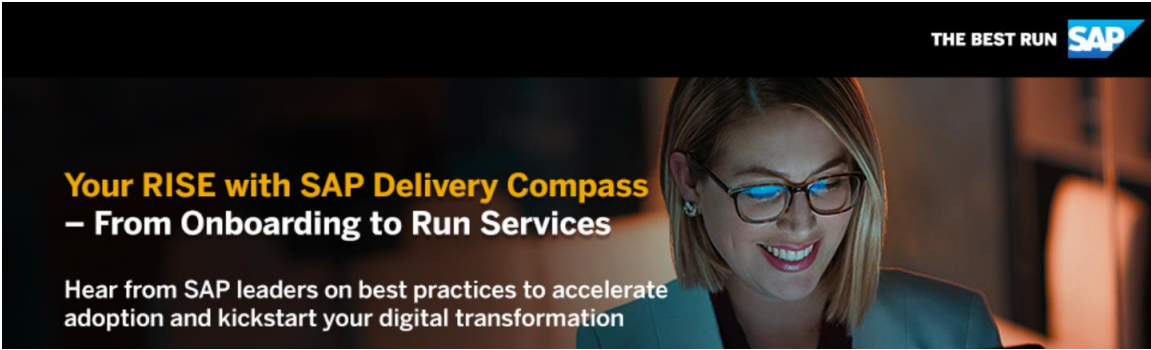
Drive innovation and reduce complexity with Enterprise Cloud Services: Your fastest path to the Intelligent Enterprise.

Our portfolio of SAP Managed Private Cloud and SAP Cloud Application Services turns SAP products into a solution-as-a-service on customer's preferred infrastructure, including Hyperscalers, as one SAP.

120+	78,000+
Data Centers Worldwide	Managed Systems by ECS 80% on Hyperscalers
99,99%+	108,000+
System Availability	Servers with a total Memory of ~16,200 TB
~ 3,700	~ 3,100
ECS Customers on S/4HANA	Customers on Hyperscalers
~ 34,000	2,500+
Processed Service Requests per Month	System builds per month
~4,000	2,500+
ECS Private Cloud Customers	Employees Globally in > 20 locations



# RISE with SAP Delivery Compass Webinar Series – Now Available On Demand

The header image for the webinar series features a woman with blonde hair and glasses, smiling. In the top right corner, it says "THE BEST RUN" followed by the SAP logo. The main text on the left reads "Your RISE with SAP Delivery Compass – From Onboarding to Run Services" in yellow and white. Below this, it says "Hear from SAP leaders on best practices to accelerate adoption and kickstart your digital transformation" in white.

**Your RISE with SAP Delivery Compass**  
– From Onboarding to Run Services

Hear from SAP leaders on best practices to accelerate adoption and kickstart your digital transformation

- ☐ **Session 1: Adoption Readiness**  
Thursday, August 25, 2022, 01:00 PM EDT
- ☐ **Session 2: Customer Onboarding**  
Thursday, September 01, 2022, 01:00 PM EDT
- ☐ **Session 3: Run Phase Services**  
Thursday, September 08, 2022, 01:00 PM EDT
- ☐ **Session 4: Continuous Value Realization**  
Thursday, September 15, 2022, 01:00 PM EDT

- Web seminar series took place late last year
- Goal was to educate teams on “what’s next” after signing a RISE (Private Edition) subscription
- [Link to Replays](#)

# Agenda

- Evolution of SAP ERP – from Past to Present
- What Makes S/4HANA Different from Legacy ERP
  - New Capabilities & Innovations
  - Where is R&D Going?
  - Current Adoption
- What Makes RISE with SAP S/4HANA Cloud, Private Edition Unique
- **Planning Tools & Education Offerings**
- Q&A

# Why MOVE to SAP S/4HANA?

Customer Flip Book



**EXTERNAL**

THE BEST RUN **SAP**

**The Future is NOW**

**Learn how SAP S/4HANA  
Drives Top, Bottom, and  
Green Line Growth**

*February 2023*

<https://online.flippingbook.com/view/64828969/>

- Why SAP S/4HANA Cloud?
- What's the value?
- Overview Demonstration
- Why transition NOW
- Hear from our Customers
- Test Drive SAP S/4HANA Cloud
- Build the Business Case & Plan the Path Forward
- Email Us: [movetoS4HANA@sap.com](mailto:movetoS4HANA@sap.com)
- **Start exploring today!**

# SAP Process Discovery – Tailored Recommendations in < 5 Days

[S4HANA.com](https://www.sap.com/products/s4hana)

OVERVIEW

EXECUTIVE SUMMARY

INTRODUCTION

REDUCE FINANCE COSTS

Finance: Your company's current transaction usage

Value Driven

Red Effort

Red Finance

How SAP helps

Build an intelligent enterprise with SAP S/4HANA business scenarios

All innovation recommendations

OVERVIEW

EXECUTIVE SUMMARY

INTRODUCTION

REDUCE FINANCE COSTS

Overdue & open

Findings and What we measure

59,763

Overdue & open

Absolute number not cleared yet in the past.

Learn more »

Consumer Products

Your Company

bottom 25%

70,657

OVERVIEW

EXECUTIVE SUMMARY

INTRODUCTION

CUSTOMER

Provide a and submit to logistic Enable a granular

★ Industry

SAP Innovation and Optimization Pathfinder

Sample Corp. System: PRD

OVERVIEW

FINANCE

SOURCING AND PROCUREMENT

SALES & SERVICE

SUMMARY

SIMPLIFIED USER EXPERIENCE

SAP S/4HANA INNOVATIONS

INTELLIGENT TECHNOLOGIES

Simplified User Experience

Customer-specific SAP Fiori App recommendations

SAP Fiori will help your users gain productivity, save on training costs and increase user adoption.

Explore each line of business to discover which SAP Fiori apps are available and relevant for you on your current SAP S/4HANA release.

The recommendations exclude your currently used SAP Fiori Apps, in case you provided your SAP Fiori usage data when requesting SAP Pathfinder.

Overview of relevant SAP Fiori apps for Sample Corp.:

<div>Cash Manager</div> <div>12 on your current SAP S/4HANA 1610</div> <div>31 additionally on latest SAP S/4HANA 2021</div>	<div>General Ledger Accountant</div> <div>17 on your current SAP S/4HANA 1610</div> <div>21 additionally on latest SAP S/4HANA 2021</div>	<div>Accounts Payable Accountant</div> <div>14 on your current SAP S/4HANA 1610</div> <div>17 additionally on latest SAP S/4HANA 2021</div>	<div>Accounts Receivable Accountant</div> <div>8 on your current SAP S/4HANA 1610</div> <div>11 additionally on latest SAP S/4HANA 2021</div>
<div>Contract Manager - Settlement Management</div> <div>0 on your current SAP S/4HANA 1610</div> <div>16 additionally on latest SAP S/4HANA 2021</div>	<div>Cost Accountant - Overhead</div> <div>2 on your current SAP S/4HANA 1610</div> <div>10 additionally on latest SAP S/4HANA 2021</div>	<div>Accounts Receivable Manager</div> <div>3 on your current SAP S/4HANA 1610</div> <div>9 additionally on latest SAP S/4HANA 2021</div>	<div>Controller</div> <div>10 on your current SAP S/4HANA 1610</div> <div>0 additionally on latest SAP S/4HANA 2021</div>

1 2 3 4

Next »

Next Steps »

**Innovation Recommendations:**  
"SAP Fiori Apps recommendations" (1/3):  
The report segments the recommended apps by role. In the finance area, there are a total of 500+ Fiori apps. Out of these, for the general ledger accountant, 12 (on current SAP S/4HANA version) or additional 31 (on SAP S/4HANA 2020) are recommended by the Pathfinder report, based on the customer's current transaction usage.  
By clicking on any of these numbers the Fiori Apps Library will open, with the respective SAP Fiori Apps pre-filtered, containing additional information.

© 2019 SAP SE or an SAP affiliate company. All rights reserved. | PUBLIC

© 2019 SAP SE or an SAP affiliate company. All rights reserved. | PUBLIC

© 2019 SAP SE or an SAP affiliate company. All rights reserved. | PUBLIC

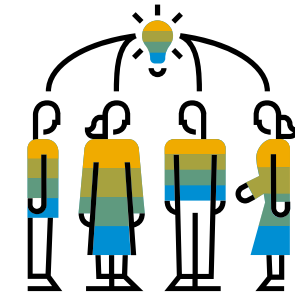
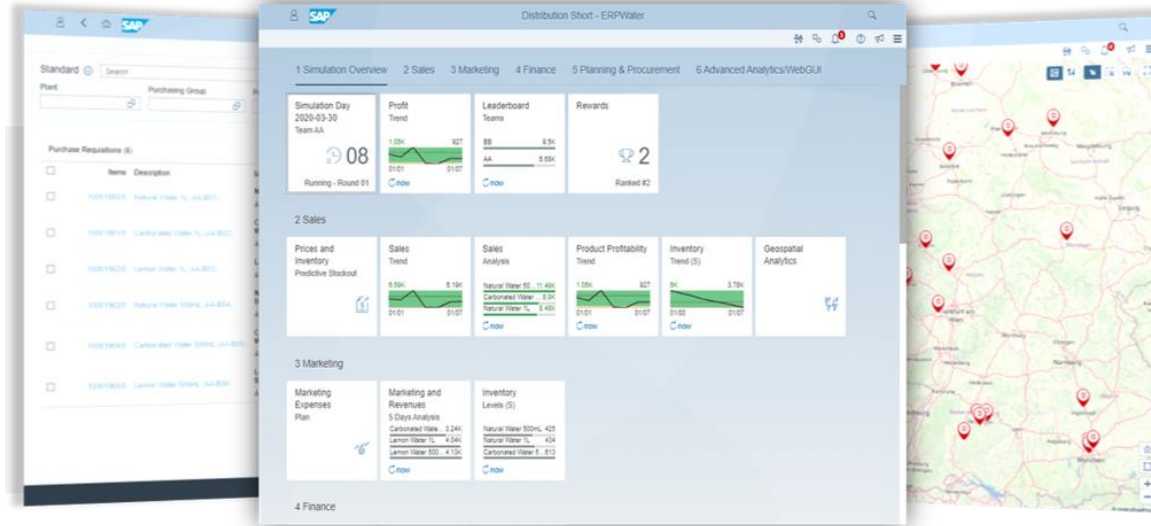
© 2021 SAP SE or an SAP affiliate company. All rights reserved. | PUBLIC

67

# SAP S/4HANA Simulation

## What is the SAP S/4HANA Simulation?

[Sign Up Here!](#)



### SIMULATION ENGINE

1. Customer and supplier behavior algorithms
2. Simplification of administrative tasks (iRPA)
3. Time acceleration

## SAP S/4HANA

### SAP Business Technology Platform

### PARTICIPANTS ROLE

1. Business decisions
2. Business analytics
3. End-to-end process collaboration



# SAP Readiness Check for SAP S/4HANA

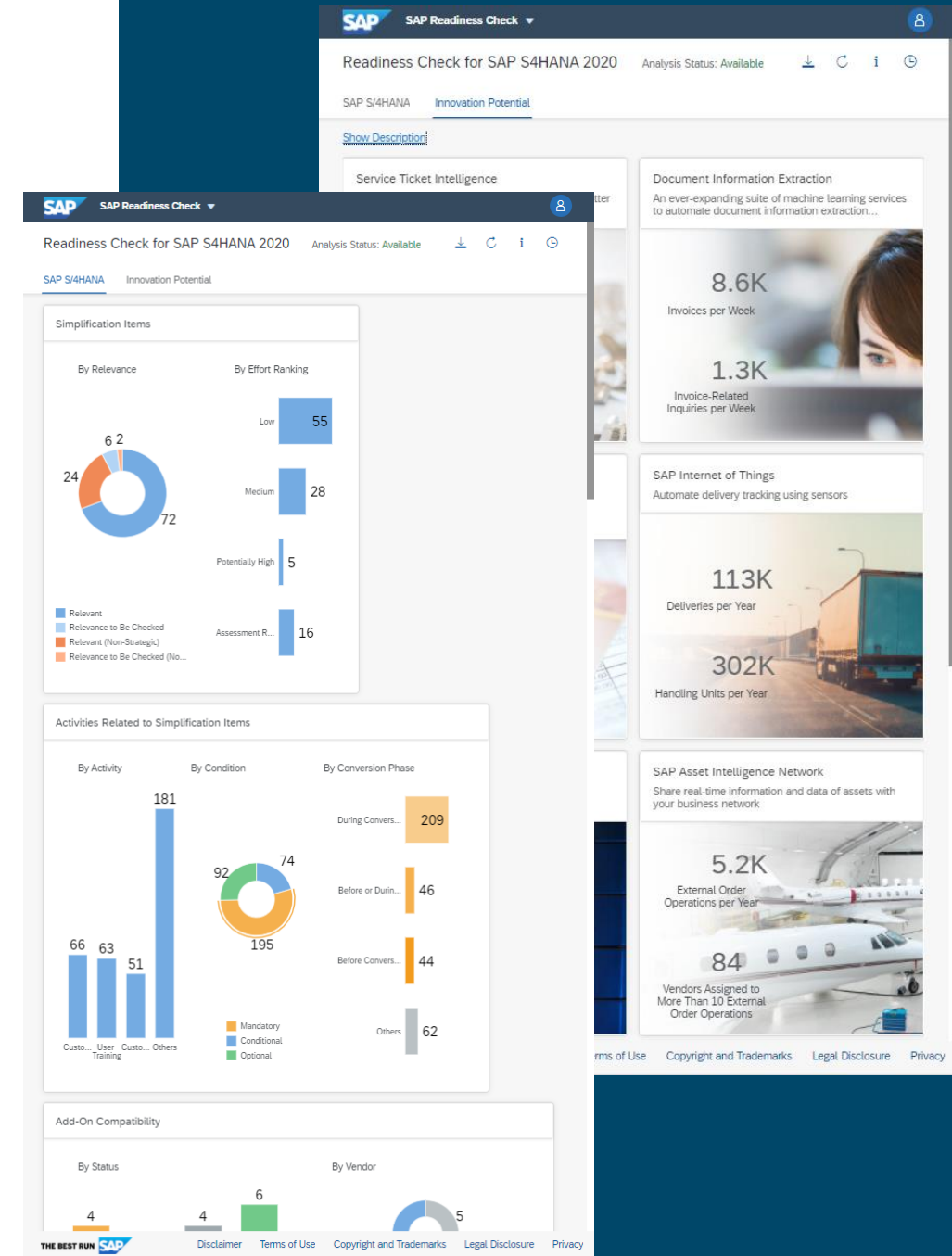
## Preparing for Your SAP S/4HANA Conversion

As you prepare your SAP S/4HANA transition project, it is critical to understand both the **technical and functional considerations** that can influence the project scope and duration.

SAP Readiness Check for SAP S/4HANA provides customers with the **analysis tools and an interactive dashboard** to evaluate an existing SAP ERP system in preparation for the transition to SAP S/4HANA.

*Have you ever wondered...*

- Which **SAP S/4HANA simplification items** are relevant for you?
- Which **project activities** are behind each simplification item and how high is the effort?
- Will my **custom code** work with SAP S/4HANA, and if not, what do I do?
- Are my **add-ons** and **business functions** compatible with SAP S/4HANA?



# SAP S/4HANA Enablement Offerings

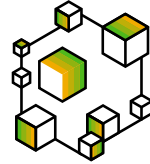
## 10 Steps to SAP S/4HANA & 5 Steps to SAP Fiori for SAP S/4HANA

[For more info, click here](#)

Americas Region: Jul 5 – Jul 31, 2023

### 10 Steps to SAP S/4HANA

System Conversion hands on experience



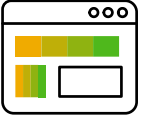
S/4HANA experts explain step-by-step how to convert an SAP ERP system to SAP S/4HANA in 10 two-hour virtual classroom sessions distributed over a one-month period.

[For more info, click here](#)

Americas Region: Sep 11 – Sep 29, 2023

### 5 Steps to SAP Fiori for SAP S/4HANA

Hands on experience on Fiori Configuration



Within 5 live virtual sessions you understand how to unlock the full potential of the next-generation business suite by deploying existing FIORI applications.

#### Resources profile

Basis  
consultant

ABAP  
Developer

Finance  
consultant

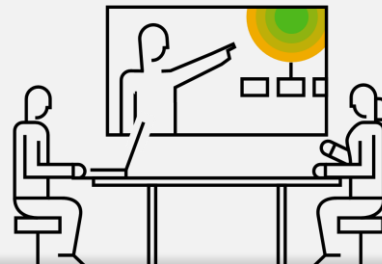
Logistic  
consultant

Tech/Basis

Developer

Application  
consultant (optional)

Coached end-to-end conversion  
process to SAP S/4HANA and  
deployment of Fiori applications



Based on latest officially  
available software releases





# Agenda

- Evolution of SAP ERP – from Past to Present
- What Makes S/4HANA Different from Legacy ERP
  - New Capabilities & Innovations
  - Where is R&D Going?
  - Current Adoption
- What Makes RISE with SAP S/4HANA Cloud, Private Edition Unique
- Planning Tools & Education Offerings
- **Q&A**

# Thank you.

Contact information:



Brijesh Patel  
NA S/4HANA Center of Excellence – East Region

Email: [brijesh.patel@sap.com](mailto:brijesh.patel@sap.com)

