

+ SAP and Azure cloud in Global project delivery



March 2023

Marek Klocok & Allan Fergusson

Copyright © Hatch 2023. All rights reserved.

HATCH



EMPLOYEE-OWNED

partners who
think like owners

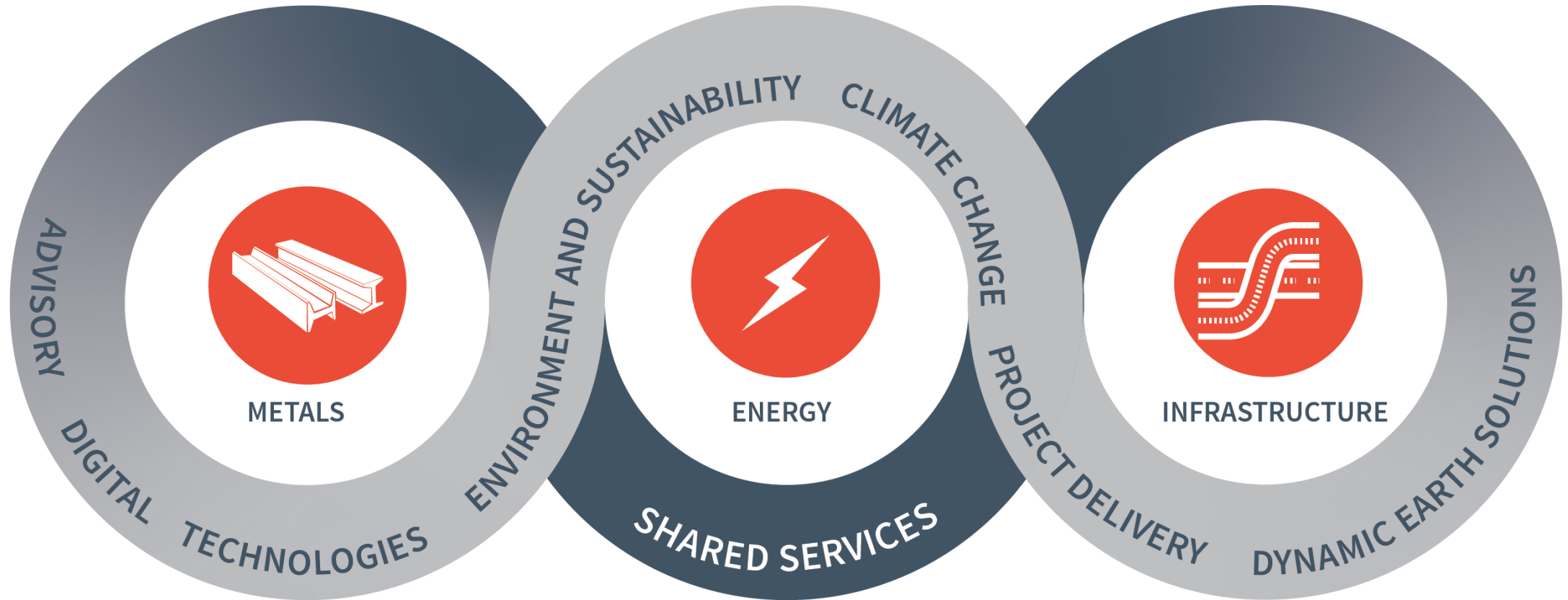
9,000
professionals
worldwide

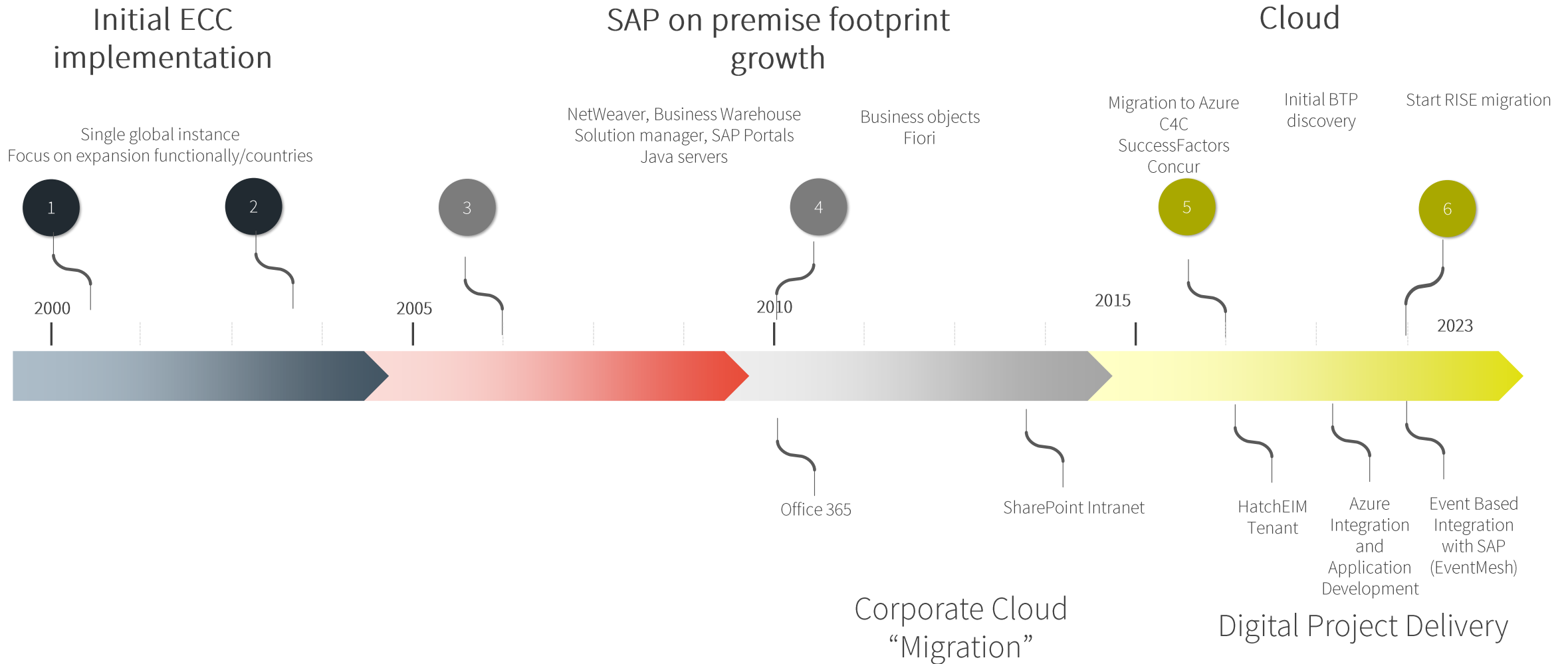
Projects in
150
countries

US\$50B
in projects

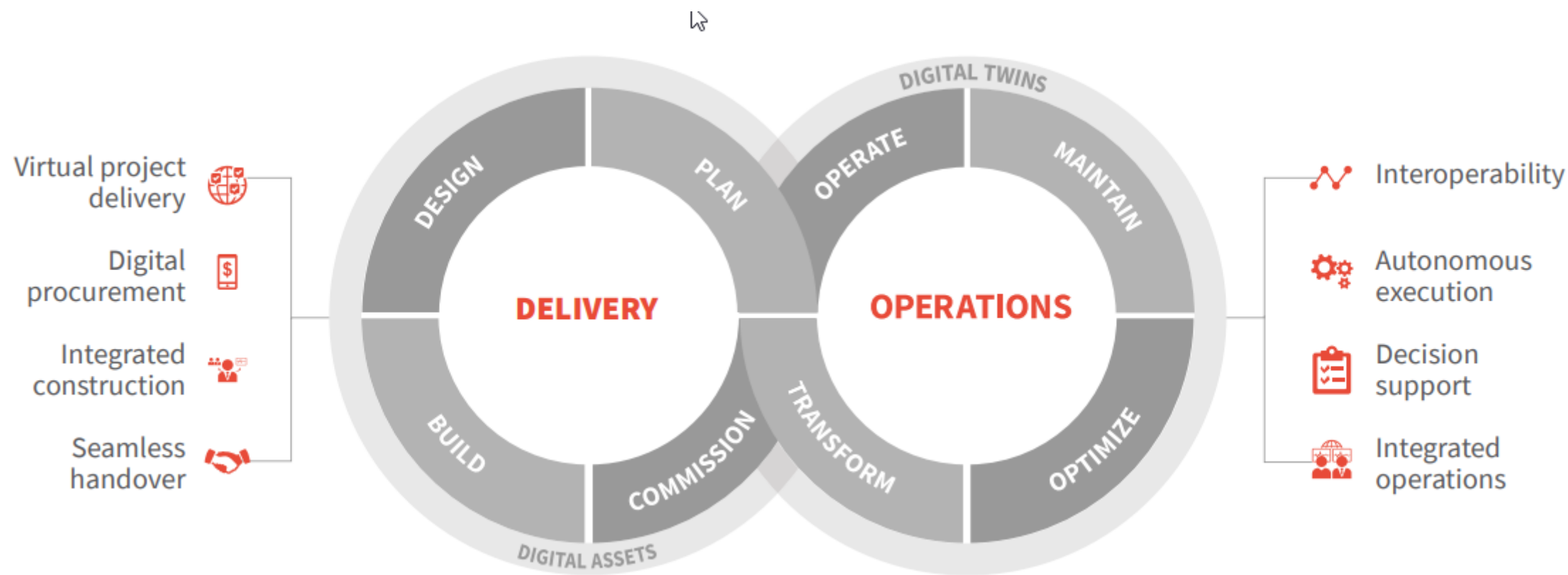
68 YEARS
of experience

Our business

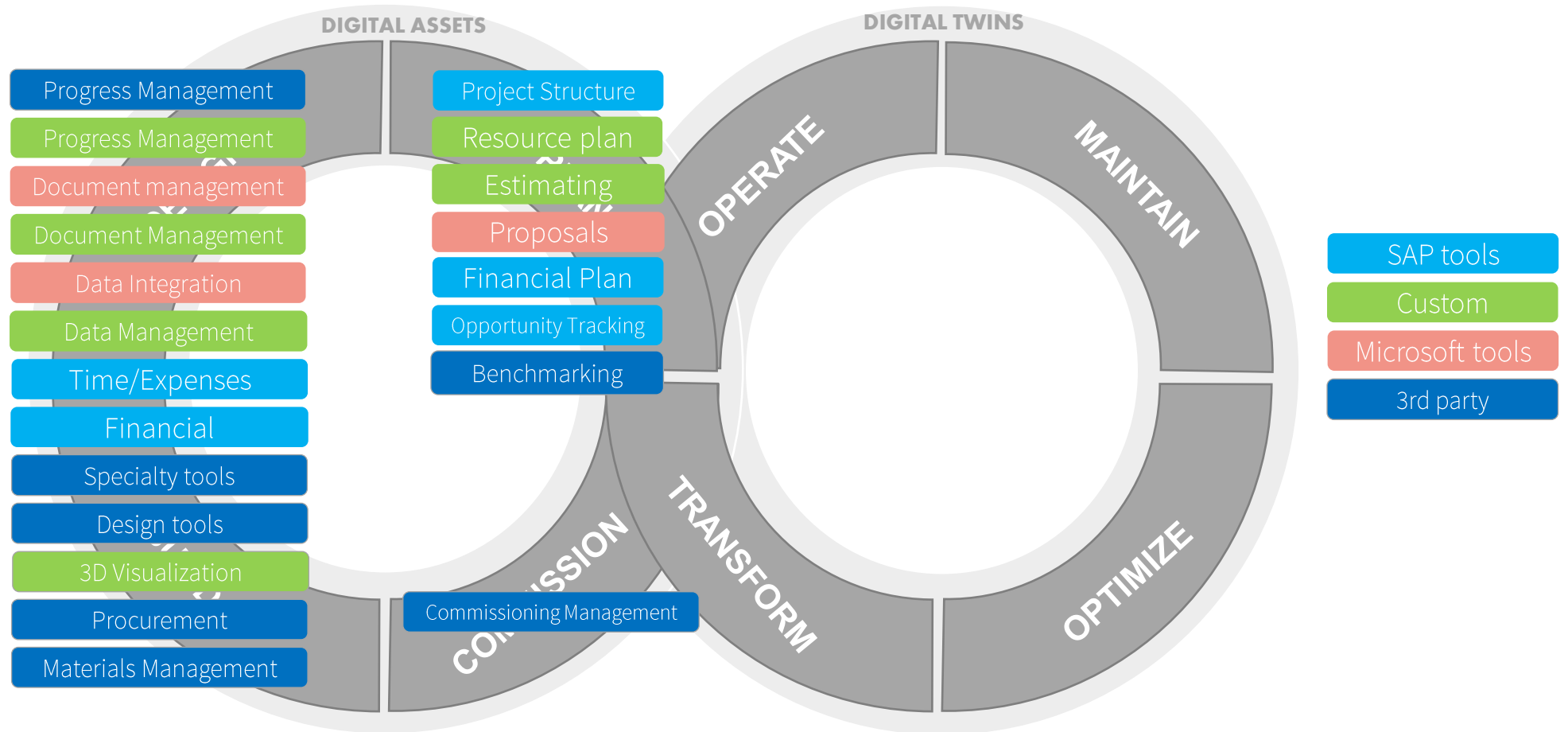




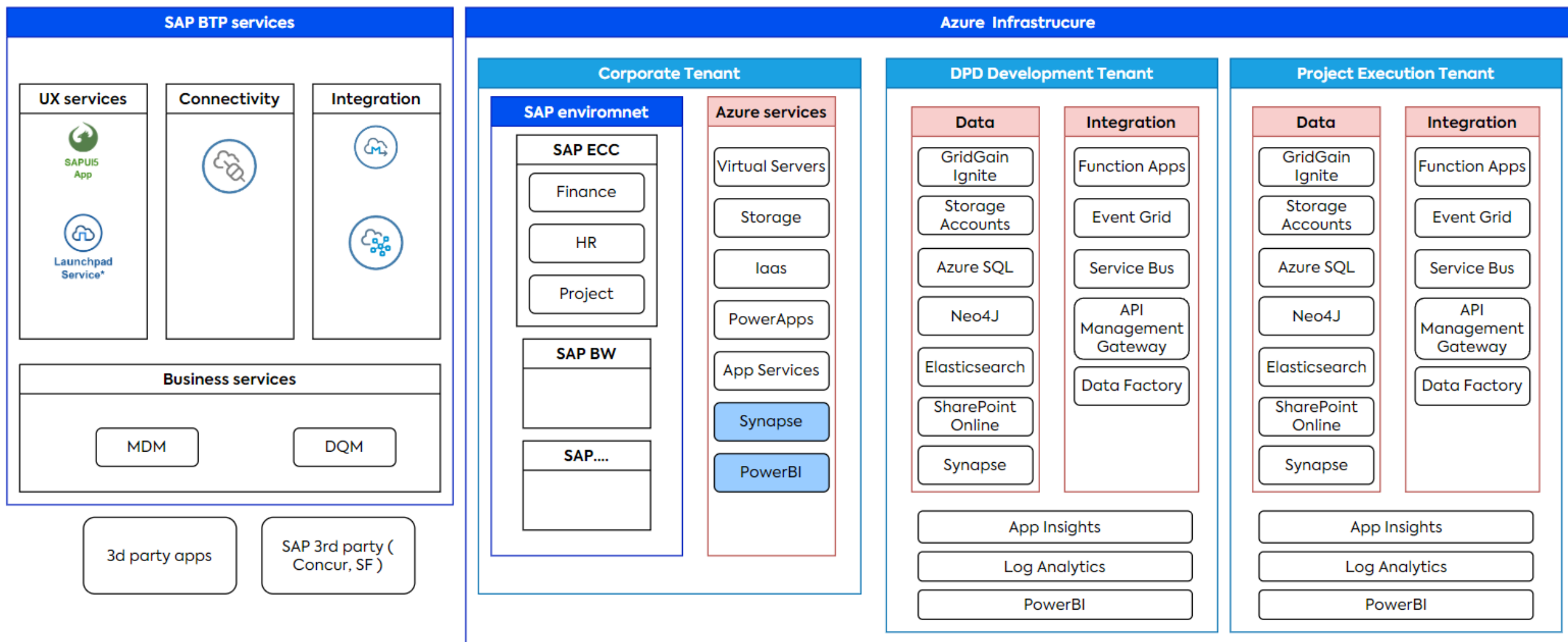
Digital Project Delivery



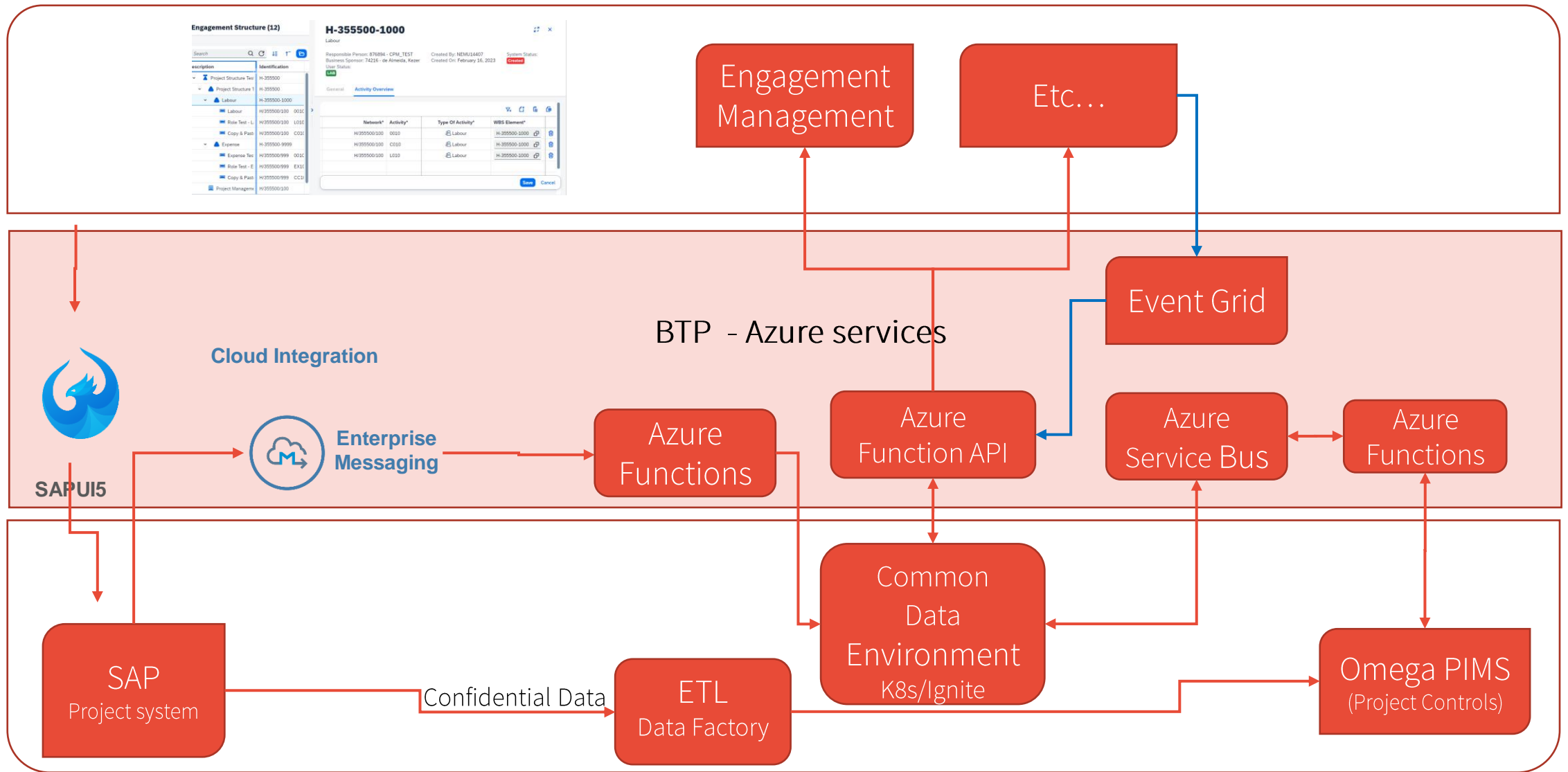
Simplified Project Lifecycle



SAP & Azure high level services landscape

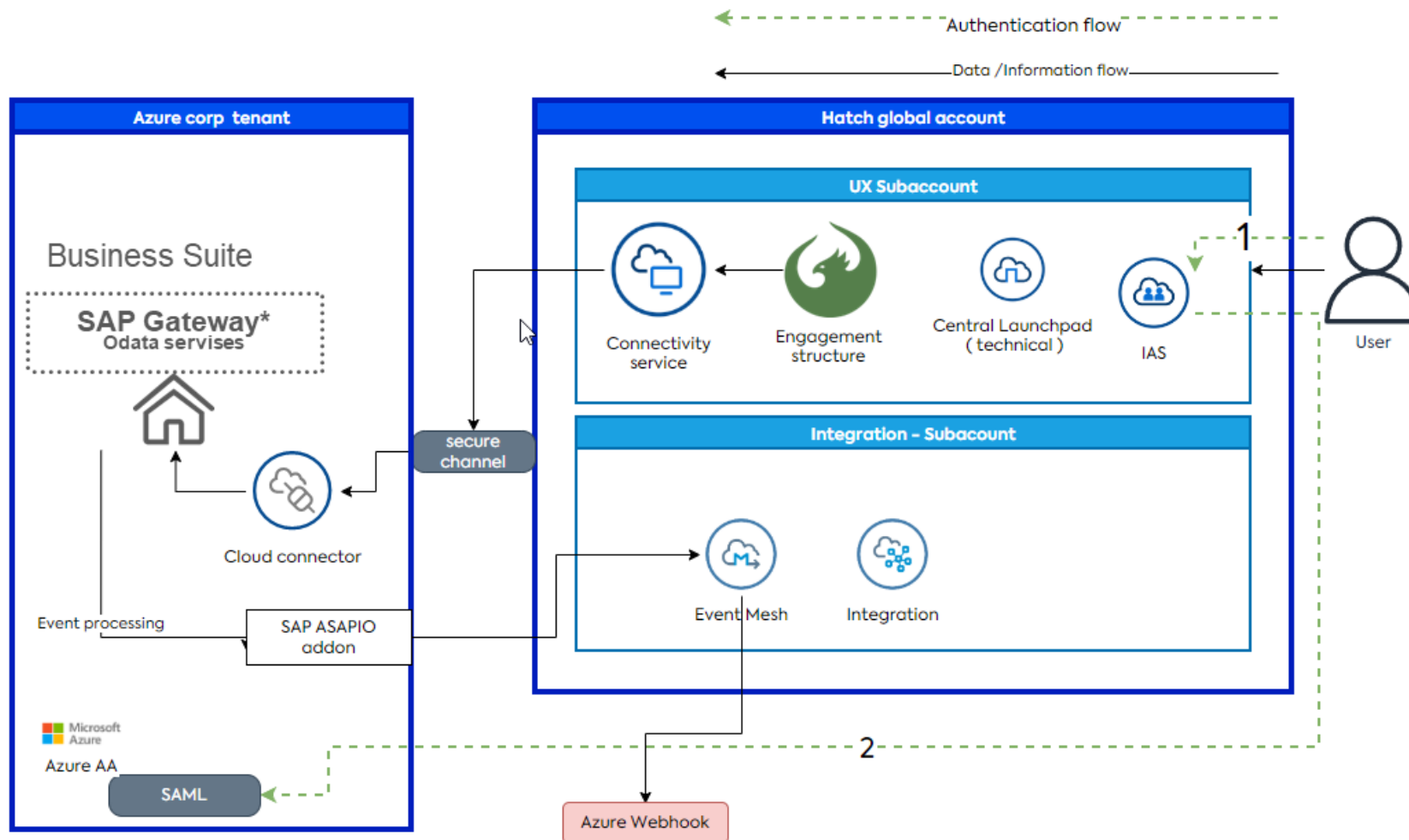


User Experience layer

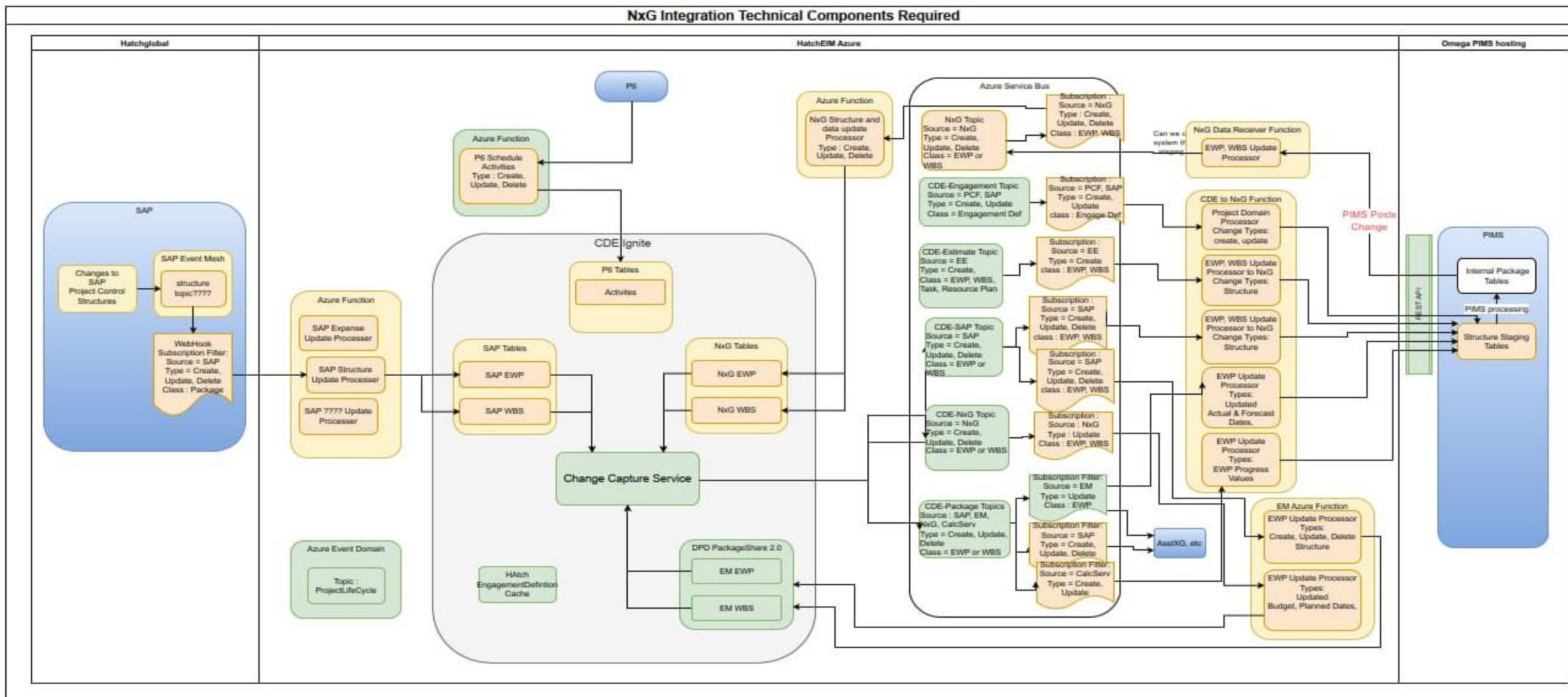


Backend Systems

Engagement structure app architecture



SAP & BTP & Azure integration



Azure how do we use it in more details

- Tenant structure
 - Corporate
 - Originally an extension of on-prem setup
 - SAP, HR, Etc
 - Moving to landing zone architecture (i.e. subscriptions)
 - Large Project Tenant(s)
 - Large confidential projects
 - Duplicate systems run like separate organizations
 - Some shared IT
 - Digital Project Execution
 - Tenant dedicated to project execution with integrated teams
 - Shared multi-tenant infrastructure and applications

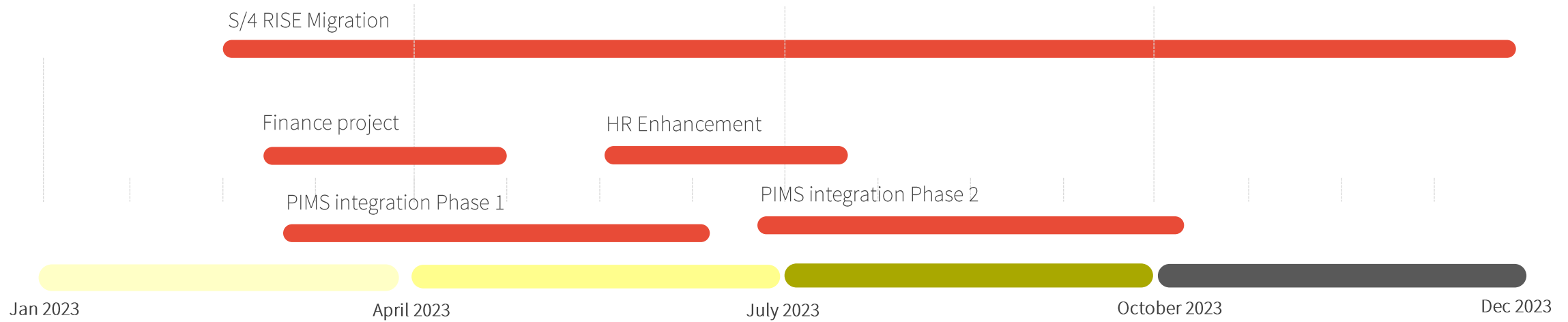
Project delivery Azure Use cases

- Application Development
 - App Services
 - SharePoint
- Security/General
 - Azure Active Directory B2B
 - KeyVault
 - AppInsights
 - Log Analytics
- Integration
 - Event Grid
 - Service Bus
 - Functions
- Data Storage
 - Blob storage
 - GridGain Ignite
 - Neo4J
 - Elasticsearch

Lessons learned from BTP deployment

- Utilize PAYG consumption model to evaluate usage/services
- Review your current subscription (CPI, WebIDE etc.) and identify opportunities for consolidation
- Mix your teams (e.g. pair seasoned backend developers with UX developers)
- Dedicate time to authentication
 - By mindful of IAS/IPS deployment specially with SF deployment
- Identify roles for transition

Sample of BTP-use to de-risk S/4 migration and in-flight projects



Data Quality management

- Prepare for CVI
- Ensure that data stays clean before S/4 conversion

Integration services

- Consolidate your integration strategy
- Move integration out of the core system (folders, system API)
- Implement API management for SAP endpoint

User Experience services

- Keep the core clean
- Remove dependencies on rapidly evolving UX cycle
- Simplifies go live for end users (SAP workzone)

Questions ?



Allan Fergusson allan.ferguson@hatch.com
Marek Klocok marek.klocok@hatch.com