

Arvato Systems North America Inc.

Shop Floor Digitalization and Retail Compliance at 3A Composites USA

ASUG Chapter Meeting, Raleigh, NC
March 24th 2023

Speakers



Mario Karrenbrock

CEO

Arvato Systems North America Inc.



Pratik Ghumalia

SAP S/4HANA Senior Consultant & Platbricks
Consultant

Arvato Systems North America Inc.

Table of Contents

1

3A Composites
& The Challenge

2

Arvato
Systems

3

SAP ECC & S/4HANA
WM & EWM
Stock Room Management

4

Platbricks
&
Implementation Scope

5

Demo

6

Benefits

3A Composites USA Inc.

FOME-COR



GATOR



SINTRA



DIBOND



LUMEX



DISPA



3A Composites is the global market leader in core materials for sandwich constructions, particularly for use in wind farms. The company is also a leading player in other segments such as composite panels for high-quality facades and display applications. In the United States, its best-known brands are ALUCOBOND®, DIBOND®, GATORFOAM®, SINTRA®, and FOME-COR®.

Alucobond®: Corporate Image Branding From The Inside Out

https://www.youtube.com/watch?v=w_RA1NYYmUM&t=33s

- ★ Davidson, NC - North American Division Headquarters
- Statesville, NC - Display & Graphic Arts Manufacturing Facility
- Glasgow, KY - Display & Graphic Arts Manufacturing Facility
- Benton, KY - Architecture & Design Manufacturing Facility

Arvato Systems North America

We Empower Digital Leaders



Bertelsmann Intro
Video
→ [Here](#)



Bertelsmann
Company Info
→ [Here](#)




Arvato Systems
Who we are Video
→ [Here](#)

Arvato - Part Of The Bertelsmann Group

 **> 85,000**
Employees

 **40**
Countries

 **4.4 Billion**
Euros in Sales

Arvato Finance
Solutions

Arvato Supply
Chain
Solutions

Majorel

Arvato
Systems

300
million

interactions
with customers
per year



1.1
billion

parcels
delivered
per year



> 3.2
billion €

in receivables
processed



> 80
million

cell phones
shipped in China
per year



100
million

advertising
clicks in 180
currencies billed
per day



> 70
online shops

developed for
numerous
international fashion
brands



> 60
million

consumers
served in
customer loyalty
systems



> 30
languages

in own
call centers



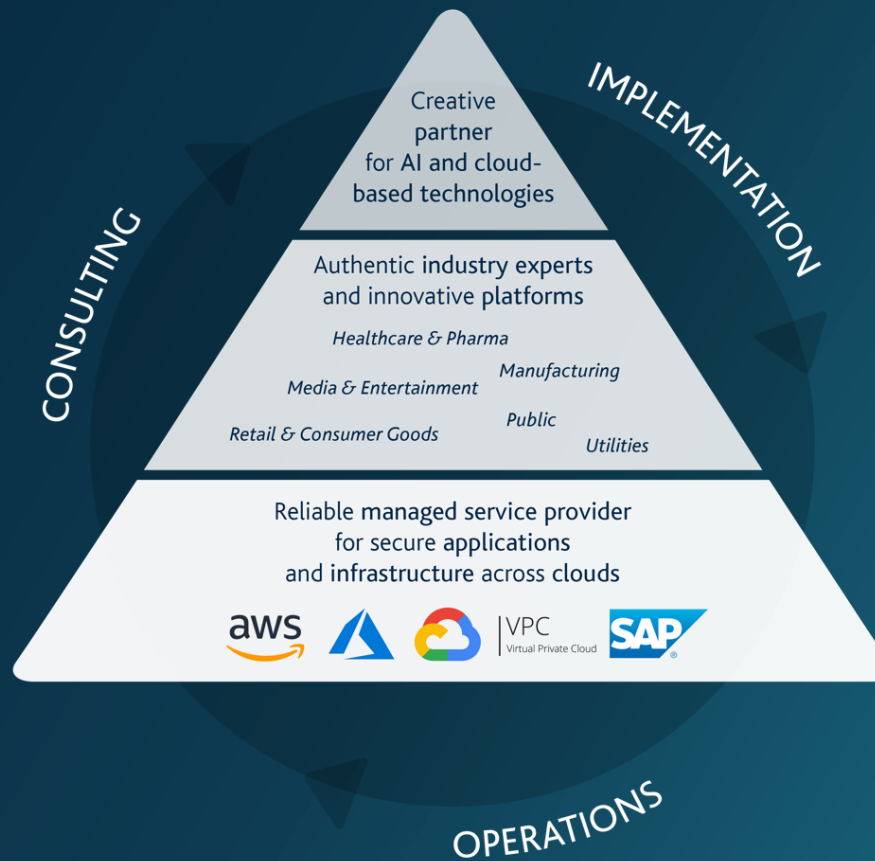
Arvato Systems – We Empower Digital Leaders with a broad range of Services



our Portfolio



Who we are

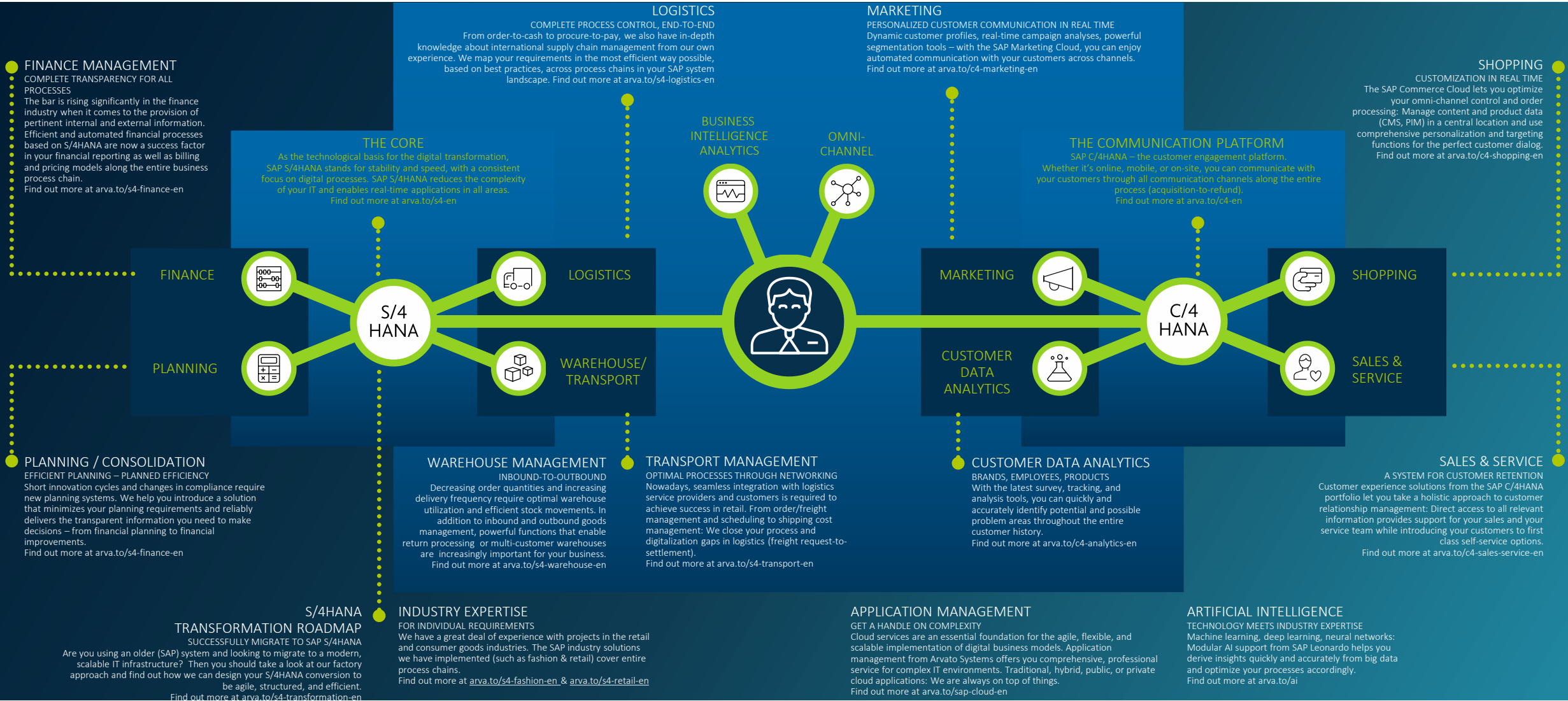


Our SAP Partnership



our Microsoft Partnership

Arvato Systems - Our Core SAP Portfolio



3

SAP ECC & S/4HANA

WM & EWM

Stock Room Management

Warehouse Management with SAP

SAP R/2

SAP R/3 - SAP ECC - SAP ERP

LE-WM

SAP EWM

SAP S/4HANA

Stock Room Management is WM Core functionality except:

- Task and Resource Management (WM – TRM)
- Warehouse Control Unit Interface (WM – LSR)
- Value Added Services (WM – VAS)
- Yard Management (WM – YM)
- Cross Docking (WM – CD)
- Wave Management (WM – TFM – CP)
- Decentral WM (WM – DWM)

LE-WM comp. mode

Stock Room Management

1987

1995

2005

2016

2019

2025

2030

4



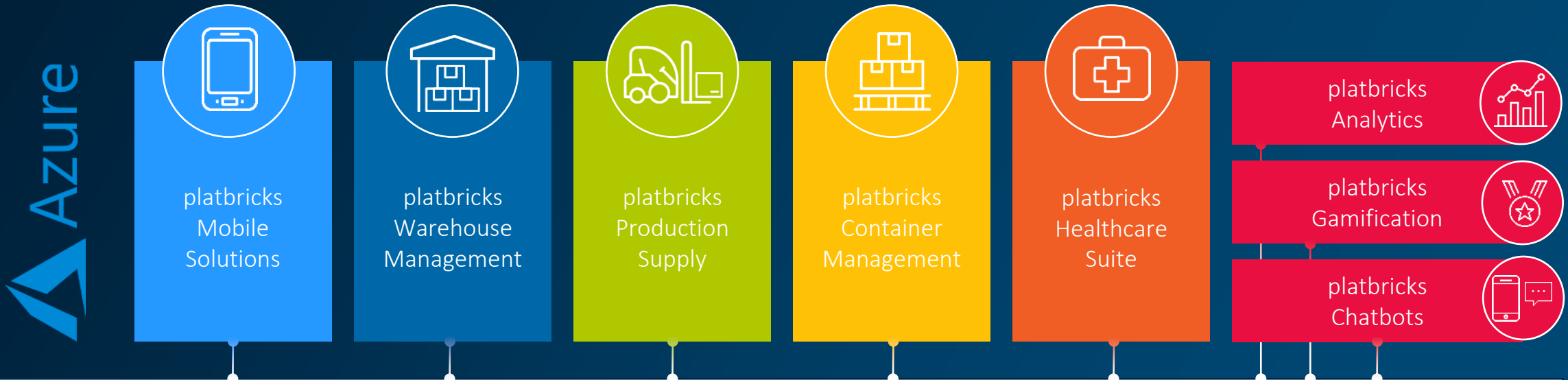
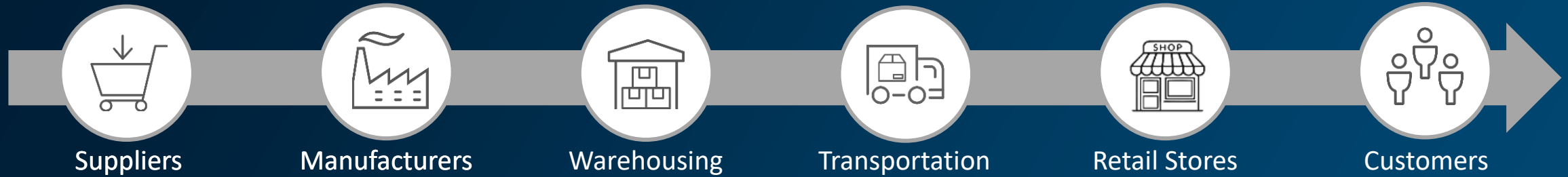
Smart Logistics Unlimited:
platbricks

Motivation

platbricks =
to be one of the leading
cloud platforms for
planning, managing,
monitoring and executing
operational processes in
logistics!

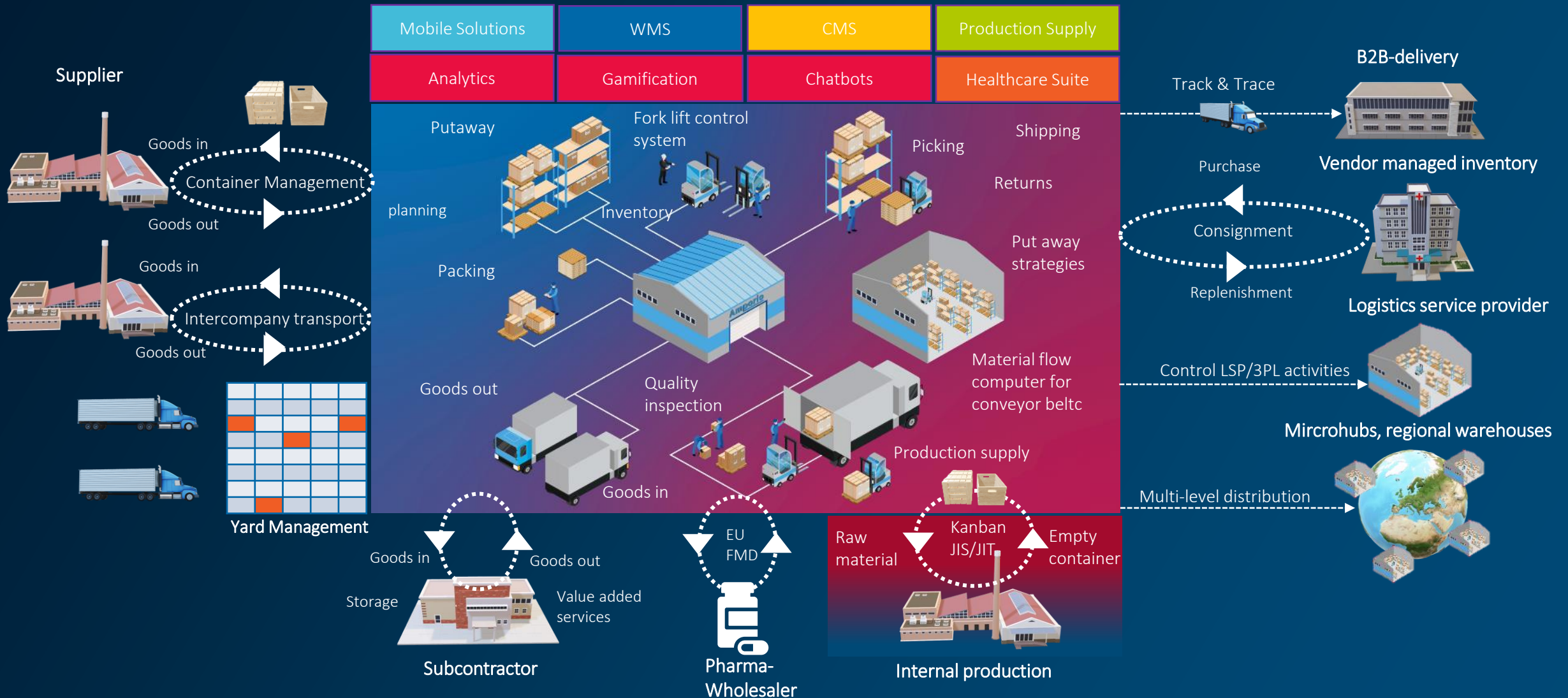


platbricks is built on a modular basis with state-of-the-art technologies



Plug-and-play interfaces ensure a fast and safe integration with your backend processes.

platbricks enables multiple digitalization usecases in logistics





Demo

Standard APIs for connectivity

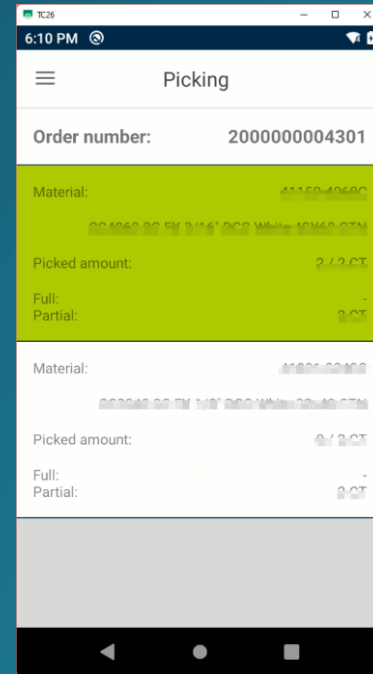
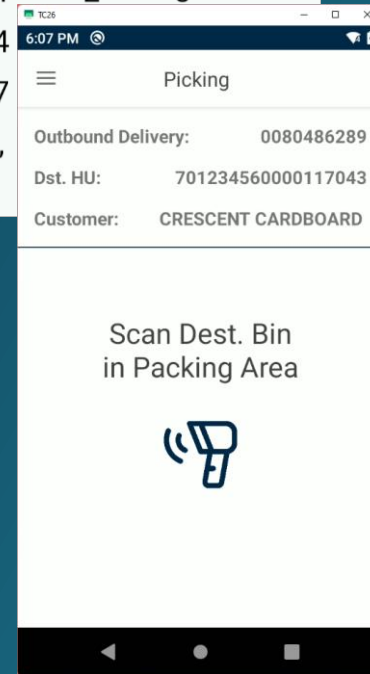
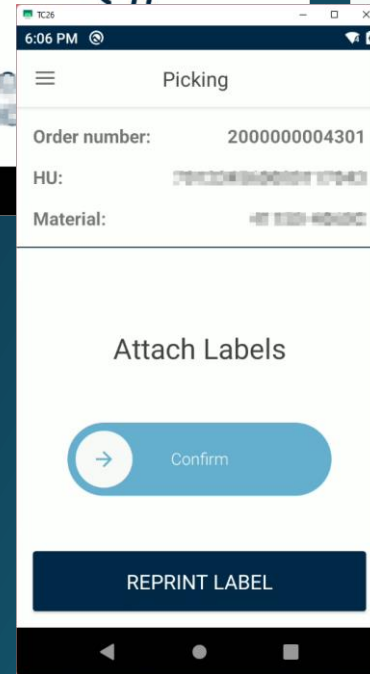
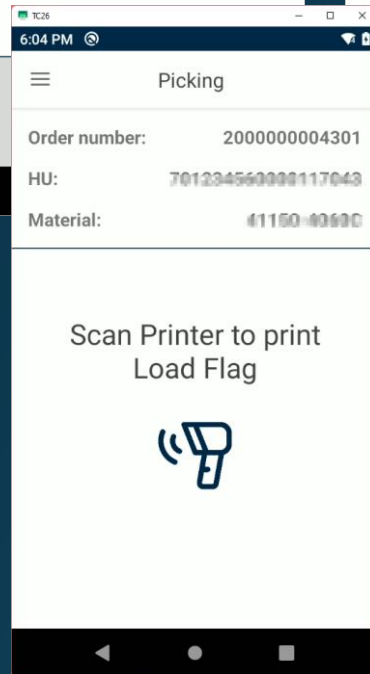
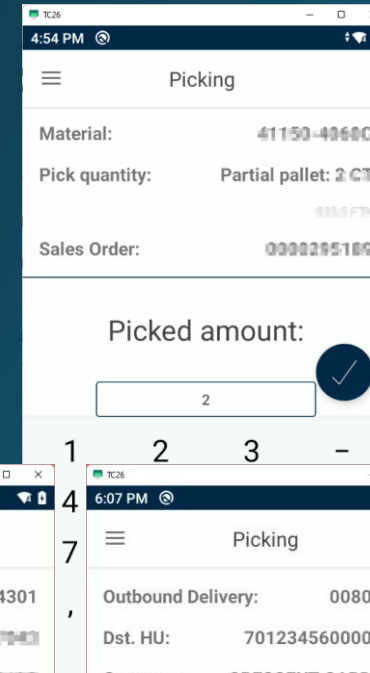
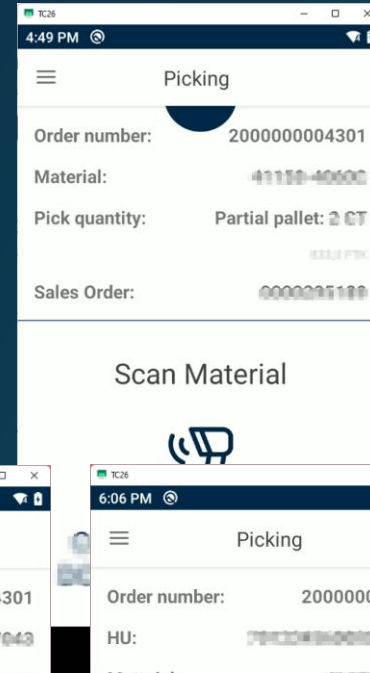
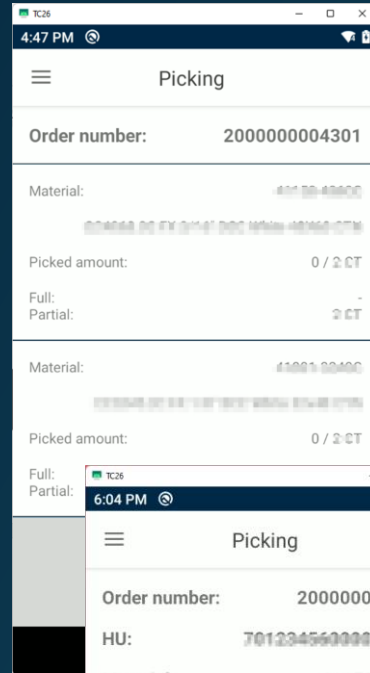
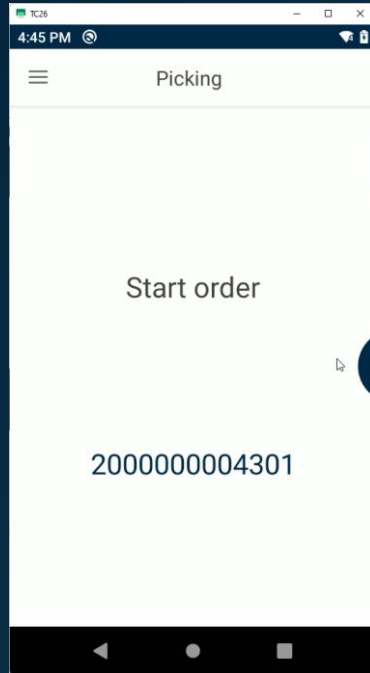
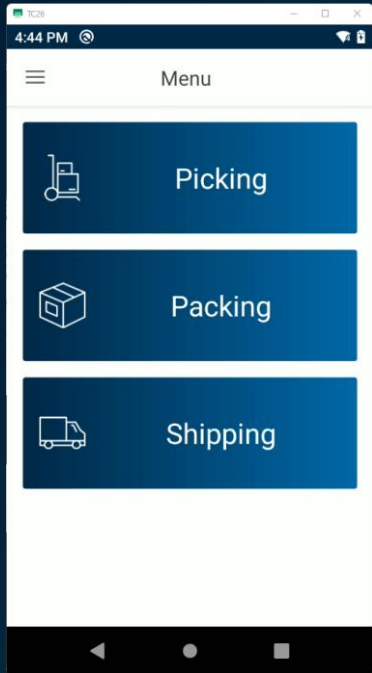
The image displays three screenshots illustrating SAP and Arvato system connectivity:

- SAP iDoc Display:** Shows the 'IDoc Display: 000000000488881' window. It includes a tree view of segments (Control Rec., Data records, E1SHP_OBDLV_SAVE_REP, E1BPOBDLVHDR, E1BPOBDLVHDRORG, E1BFDLVCONTROL, E1BFDLVPARTNER, E1BFDLVPARTNER, E1BFDLVPARTNER, E1BFDLVPARTNER) and 'Short Technical Information' such as Direction (Outbox), Current Status (03), Basic type (SHP_OBDLV_SAVE_REPLICA05), Extension, Message Type (SHP_OBDLV_SAVE_REPLICA), Partner No., Partn.Type, and Port.
- Outbound deliveries dashboard:** Features a table with columns: Delivery, Document type, Packing, Picking, Goods Issue, Changed at, and Changed by. The table lists four delivery records with status indicators like 'Planned' and 'Open'.
- Orders dashboard:** Displays three bar charts for 'Open', 'In Progress', and 'Finished' orders, and an 'Order List' table with columns: Order number, Created at, Changed at, Order status, Prio, Process, Queue, Processed by, and Confirmed.

- SAP ALE –iDOC integration decentralized warehouse management
- Delivery Monitoring and real time status updates
- Assign deliveries to queues and pickers

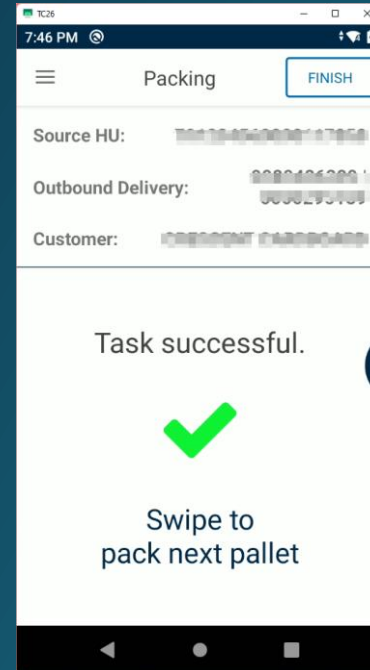
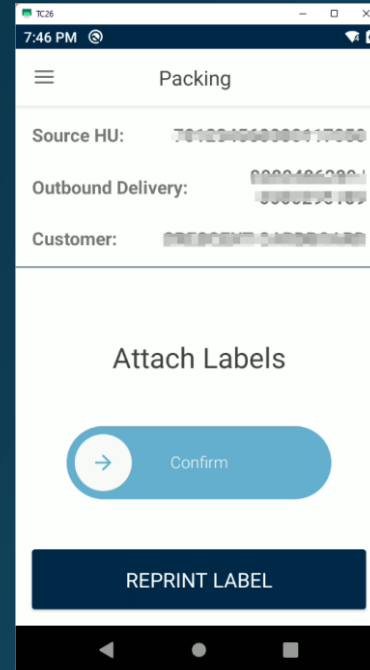
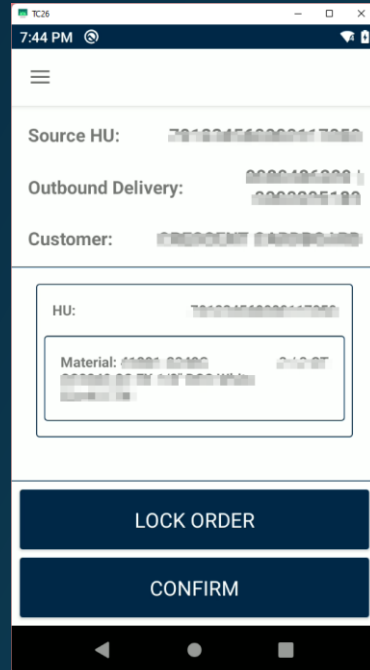
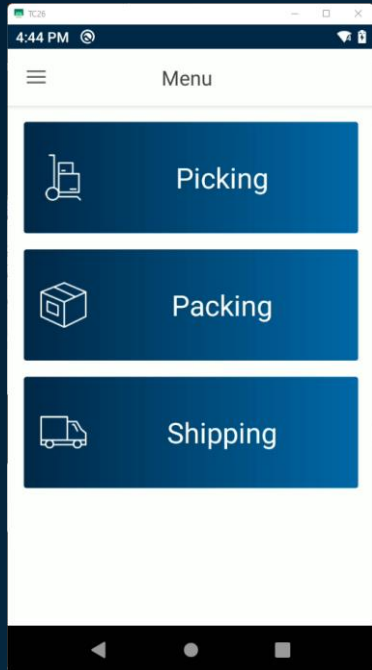
Anywhere access

Picking and transfer to packing area via mobile handhelds



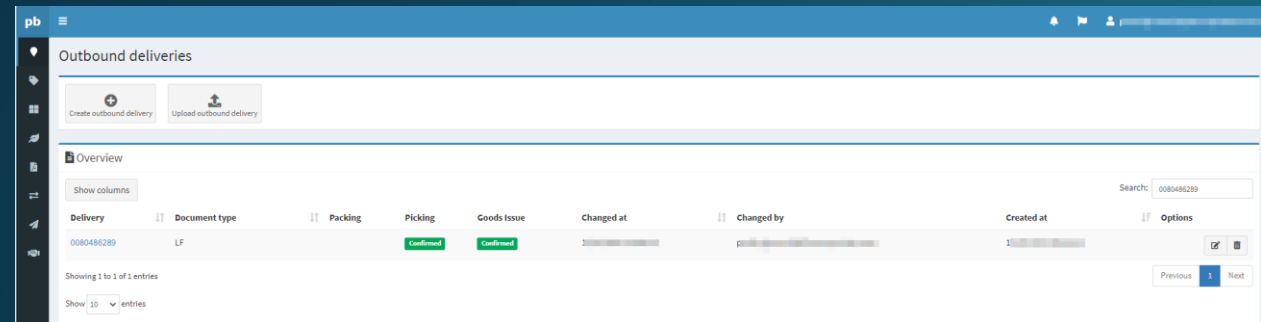
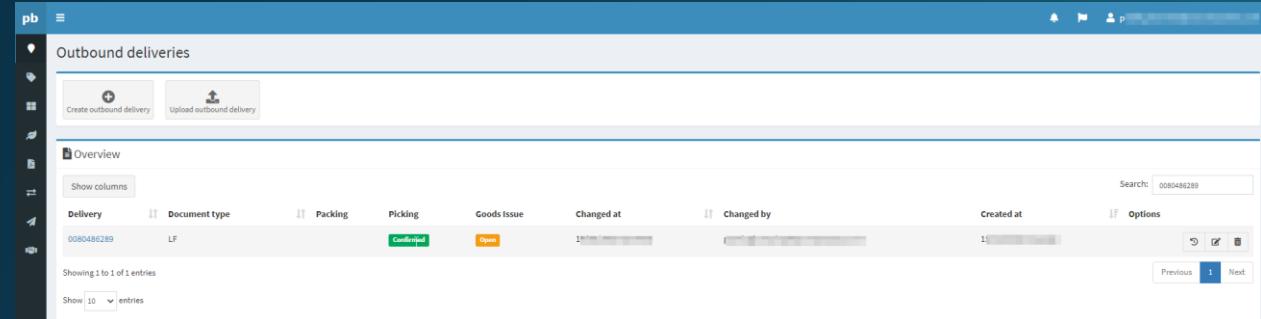
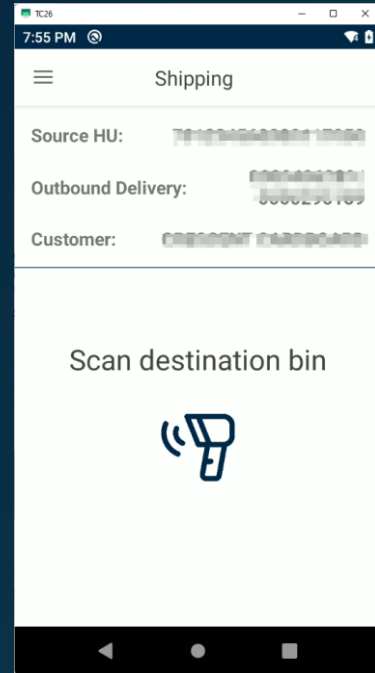
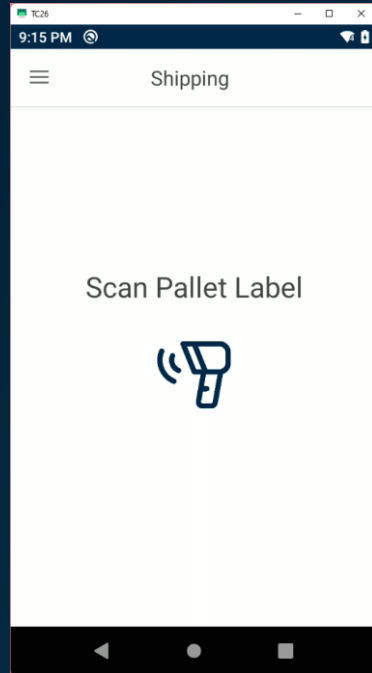
HU Number assignment after pick (SSCC Number)

Anywhere access Packing and Packing Labels printing



Ensuring Retail Compliance

Shipping and Post Goods Issue



Goods Issue in SAP along with the Packing Structure and HU details



Benefits

state-of-the-art logistics 3AC's Benefits with platbricks



Realtime processing



Scaleable



Digital networking and working with supply chain partners



Modular set-up



Comprehensive App store for mobile dialogues



Open for connecting add-on solutions



Standard APIs



Smart connecting and integration of robotics



Smart integration of all kind of wearables und IoT sensors



Short implementation (plug & play)



Easy usability



Pay – per - Use



Native Cloud - architecture



Flexible & adaptable



Awarded

