

# The End of Chapter 1: the Novelis journey to SAP S/4HANA

March 25, 2022

Presented by:

Pieter de Bruyn & Writwik Nanda



S  
i  
l  
e  
n  
c  
e

## OVERVIEW

1. Introduction Novelis
2. The Road to S/4 @ Novelis
3. SAP S/4HANA Technical Migration in rhyme
4. The Unicorn of S/4 Migrations



## WORLD LEADER IN ALUMINUM ROLLING AND RECYCLING

Canada  
United States

Germany  
United Kingdom  
Switzerland  
Italy

China  
South Korea

Brazil

	Employees	Operations	Countries
Global	~14,050	33	9
North America	5,100	17	2
South America	1,650	2	1
Europe	5,300	10	4
Asia	2,000	4	2

- World's largest recycler of used beverage cans (UBCs), recycling more than 74 billion UBCs each year
- Novelis aluminum is featured in more than 225 car models around the world
- We've created the first and largest closed-loop recycling systems in the world

### Beverage Can

### Automotive

### Aerospace

### Specialties

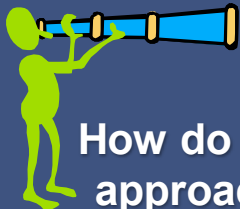


# The Road to S/4 @ Novelis



Adoption Starter Program

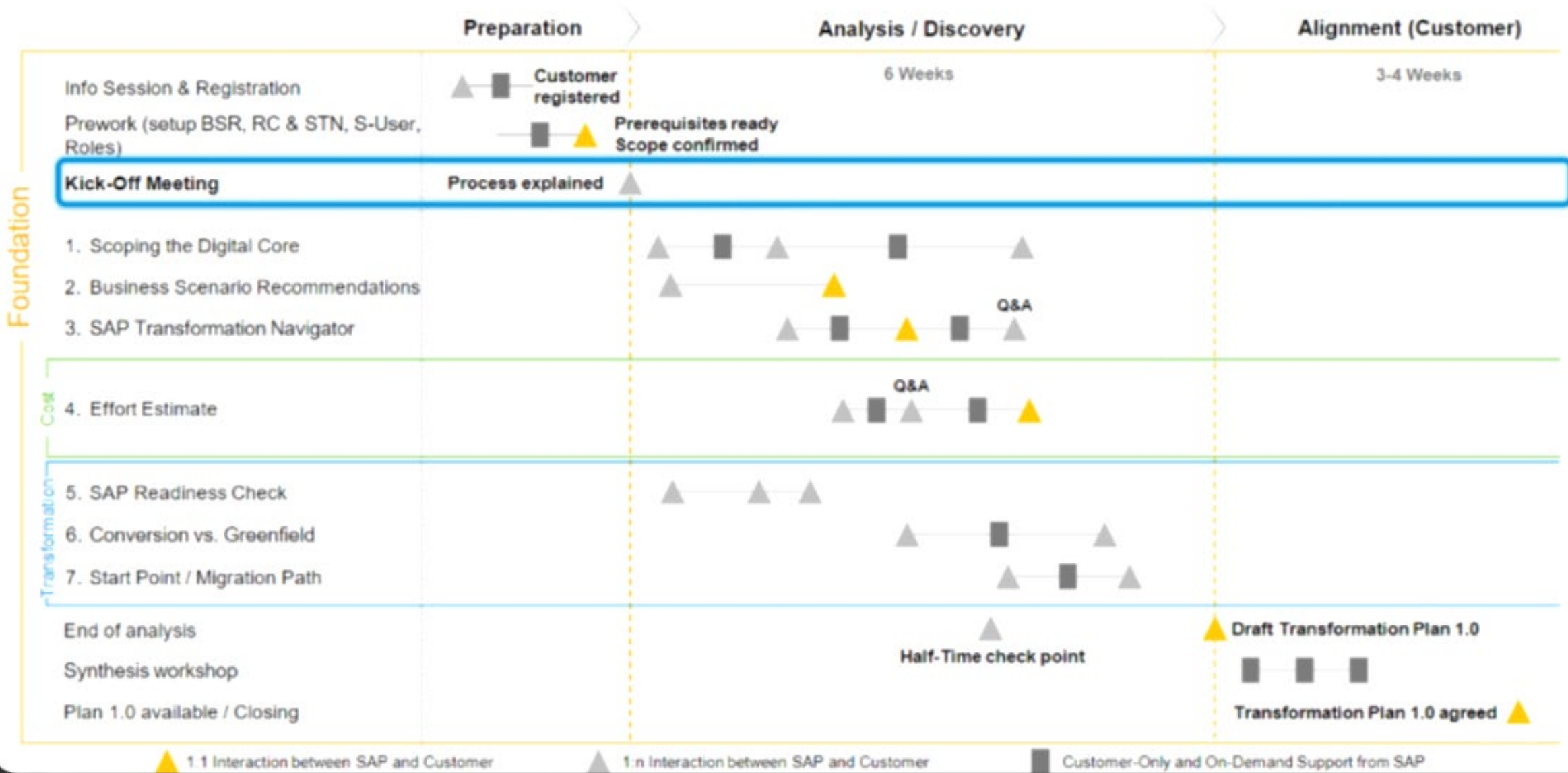
21 Apr



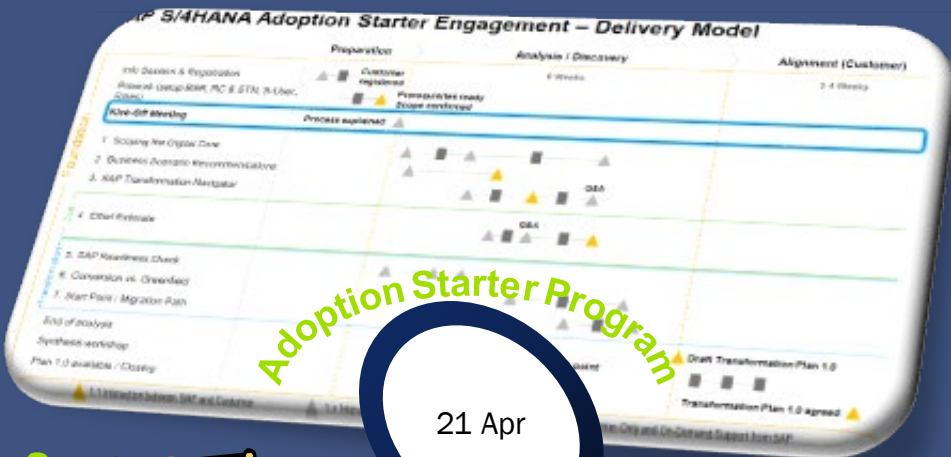
How do we approach the S/4 project?

2020

## SAP S/4HANA Adoption Starter Engagement – Delivery Model



# The Road to S/4 @ Novelis



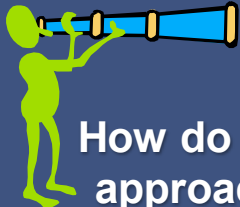
Adoption Starter Program

21 Apr

Installed a Best Practice 1909 System

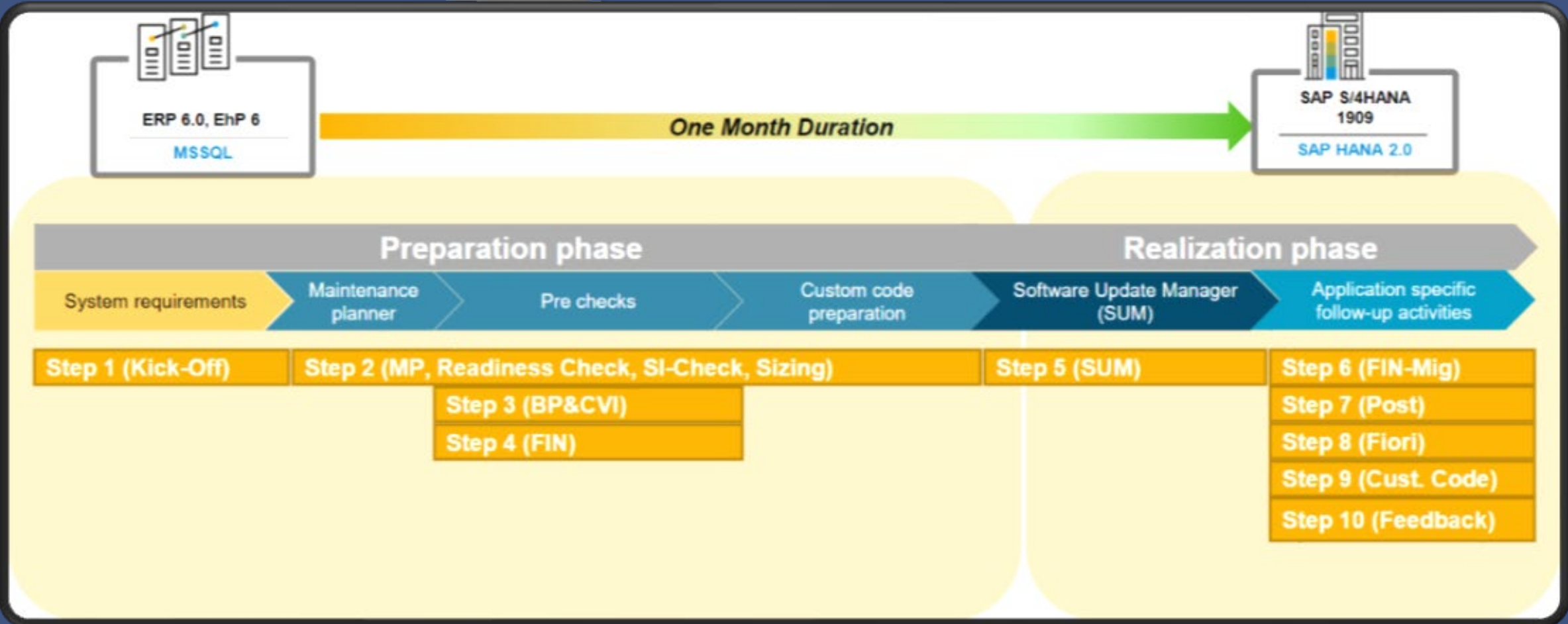
SAP Migration Bootcamp

5 Oct



How do we approach the S/4 project?

2020 Invested in SAP Learning Hub



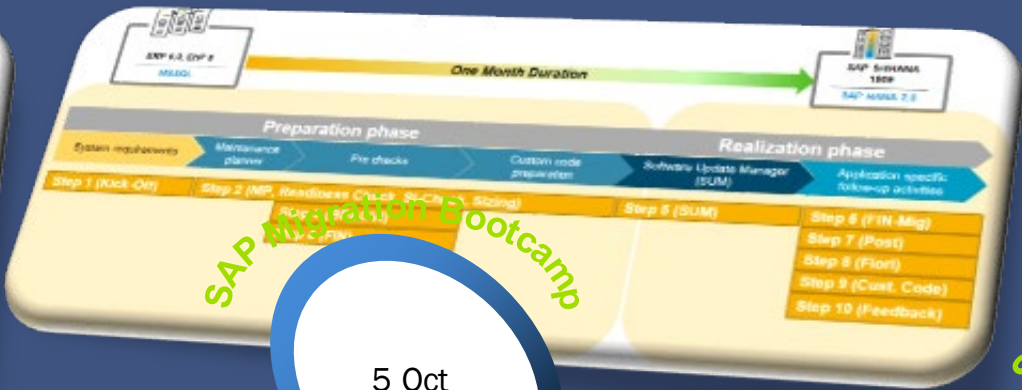
# The Road to S/4 @ Novelis



Adoption Starter Program

21 Apr

Installed a Best Practice 1909 System



SAP Migration Bootcamp

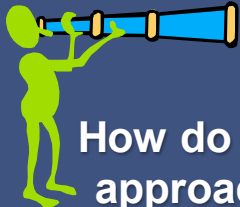
5 Oct

10Steps to S/4HANA

S/4 Pilot Project

1 Nov

Sandbox to SAP S/4 HANA



How do we approach the S/4 project?

2020 Invested in SAP Learning Hub



2021

Signed up for SAP Enterprise Support GUIDES

## How can SAP Enterprise Support Guides support you? What delivery methods and asset types can be included in your Engagement Plan?

<p><b>CQC SERVICES</b></p> <p>Analyze your systems and/or situation based on data from your own systems. You receive a Continuous Quality Check (CQC) report with findings and a detailed action plan to mitigate risks or improve the situation.</p>	<p><b>EXPERT GUIDED IMPLEMENTATIONS**</b></p> <p>Multi-day remote training sessions with experienced SAP service engineers, training participants in SAP S/4HANA technical and functional topics.</p>	<p><b>MEET-THE-EXPERT SESSIONS**</b></p> <p>Live webinars focusing on SAP S/4HANA technical and business topics. Sessions are recorded.</p>	<p><b>TUTORIALS**</b></p> <p>Provide step by step instructions, and interactive elements that teach learners how to complete tasks or processes.</p>	<p><b>ACCELERATED INNOVATION ENABLEMENT SESSIONS***</b></p> <p>These are remote live sessions, one to few, within 90 minutes, delivered by an SAP expert who will explain key SAP S/4HANA topics***.</p>	<p><b>LEARNING JOURNEYS*</b></p> <p>Detailed collections of learning assets organized in a journey to help you achieve your goals.</p>	<p><b>LEARNING PROGRAMS*</b></p> <p>Detailed collections of learning assets all related to a specific topic and aimed at giving a comprehensive understanding of the topic.</p>
<p><b>JOURNEY CHECKS</b></p> <p>Journey Checks will help you to ensure you move in the right direction at each stage of your SAP S/4HANA project. Each project phase is assessed to provide project recommendations, learning/enabling options and/or to position service content.</p>	<p><b>ENGAGEMENT POINTS</b></p> <p>Regular "check-ins" with you throughout the program. Engagement Points can be human or digital, supporting planned and specific events.</p>	<p><b>LIVE MUST-KNOW WEBINARS</b></p> <p>Key SAP S/4HANA topics regularly delivered live to you in multiple time zones and languages allowing for customer Q&amp;A.</p>				

\*\*The learning journeys and the learning programs are part of the SAP Enterprise Support value maps. \*\*\*These enablement assets are available in SAP Enterprise Support Academy and/or available through the SAP S/4HANA value maps learning journeys. \*\*\*\*Only limited SAP S/4HANA topics are covered by the asset type Accelerated Innovation Enablement.

# The Road to S/4 @ Novelis

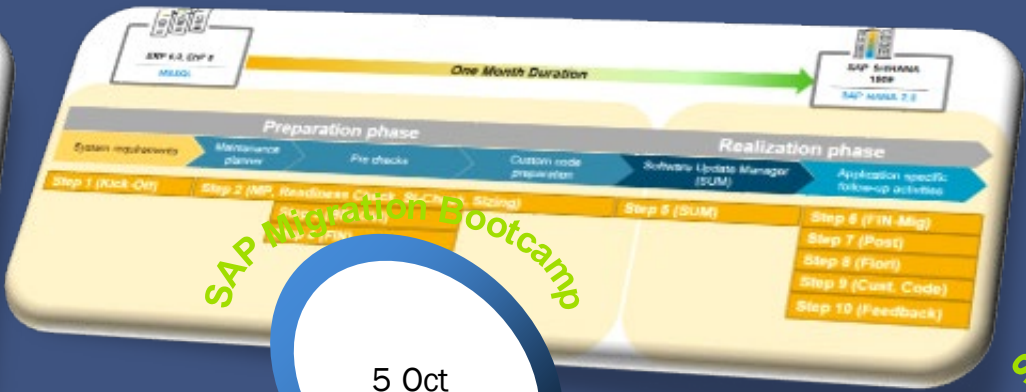
Novelis



Adoption Starter Program

21 Apr

Installed a Best Practice 1909 System



SAP Migration Bootcamp

5 Oct

10Steps to S/4HANA

S/4 Pilot Project

1 Nov

Sandbox to SAP S/4 HANA

How do we approach the S/4 project?

2020 Invested in SAP Learning Hub



Official S/4 Project Kickoff

17 Jun

Transition into Formal Project Pull in our Partners!

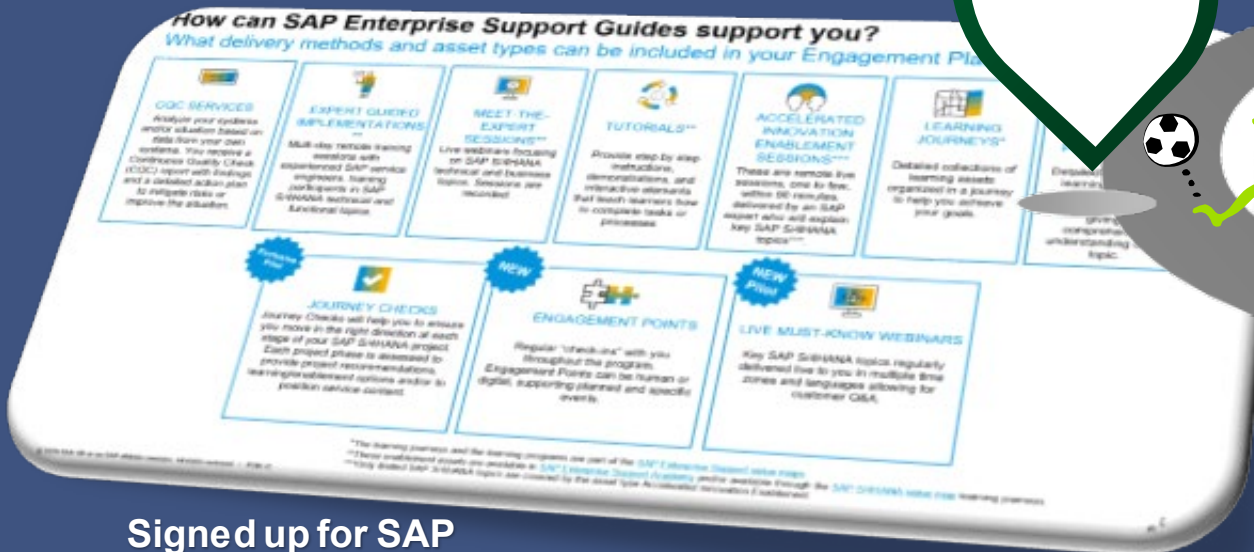


2021

S/4 Go-Live

19 Dec

2022 Mission successful!!



Signed up for SAP Enterprise Support GUIDES

© Novelis

Our Partners for the S/4 Journey





# **SAP S/4HANA TECHNICAL MIGRATION IN RHYME!**





**ONE, TWO,  
BUCKLE MY  
SHOE**

Have Vision. Get Ready.  
Do Study.

ONE TWO BUCKLE MY SHOE – HAVE VISION, GET READY, DO STUDY,

# THREE, FOUR, 'BUILD THE CORE'

Core Team. SAP Guidelines. Feasibility Study.

ONE TWO BUCKLE MY SHOE – HAVE VISION, GET READY, DO STUDY,  
THREE FOUR 'BUILD THE CORE' CORE TEAM, SAP GUIDELINES, FEASIBILITY STUDY

# FIVE, SIX, 'LIST THE TRICKS'

## ● Scope

- Technical re-platforming
- Only mandatory functional uplift
- Controlled Fiori

## ● Planning

- Detailed planning
- Every four weeks re-planning with team
- System restore plan in Cutover timing
- Hypercare and AMS transition

## ● Continuous testing

- End to end functional testing
- Four cycles of end-to-end testing

## ● Repeated mock dry runs

- Six mock cutovers – as against planned two
- Run latest SUM each time
- Multiple ATCs – One for each mock cutover
- TRs parallel to SUM pre-processing

## ● Communication with business and leadership

- Why, when, how to minimize blackout
- Global user trainings for the delta features

## ● Validation

- Agreement of validation reports
- Dry runs with approvers

ONE TWO BUCKLE MY SHOE – HAVE VISION, GET READY, DO STUDY,  
THREE FOUR 'BUILD THE CORE' CORE TEAM, SAP GUIDELINES, FEASIBILITY STUDY  
FIVE SIX 'LIST THE TRICKS'

# SEVEN, EIGHT, 'DAYS WERE TIGHT'

**Globally distributed project team**

no travel for this project including during final cutover

**Multiple dependencies**

CVI, GL Migration , New Asset Accounting and related data cleansing, Month-end closing, archiving other in-flight projects

**New errors in every mock, sequencing and tracking related notes and CRs**

**10 locations around the world more than 2000 users, all transitioning together**

**Only one cutover window found feasible in FY22**

**36 hours of downtime agreed with business**

ONE TWO BUCKLE MY SHOE – HAVE VISION, GET READY, DO STUDY,  
THREE FOUR 'BUILD THE CORE' CORE TEAM, SAP GUIDELINES, FEASIBILITY STUDY  
FIVE SIX 'LIST THE TRICKS'  
SEVEN EIGHT 'DAYS WERE TIGHT'

# NINE, TEN, 'S / 4 WAS LIVE THEN!'

Just two un-foreseen errors – immediate SAP Support - Cleansed data reduced errors

Practiced validation cycles from regional owners was smooth

Multiple Go-No-Go checkpoints

Go-Live without any impact on global business continuity

Effective and efficient Hypercare execution → transition to AMS

# SAP S/4HANA TECHNICAL MIGRATION IN RHYME!

**ONE, TWO,  
'BUCKLE MY SHOE'**  
HAVE VISION, GET READY,  
DO STUDY

**THREE, FOUR,  
'BUILD THE CORE'**  
CORE TEAM, SAP  
GUIDELINES, FEASIBILITY  
STUDY

**FIVE, SIX,  
'LIST THE TRICKS'**

**SEVEN, EIGHT,  
'DAYS WERE TIGHT'**

**NINE, TEN,  
'S/4 WAS LIVE THEN'**

An SAP FI/CO Migration Leader with E2E hands-on experience of executing a Technical Migration



Thank you for your time.

Please do not hesitate to reach out to us through ASUG or LinkedIn if you have any questions

Pieter de Bruyn  
Novelis Inc

Writwik Nanda  
Capgemini

Novelis Inc. is driven by its purpose of shaping a sustainable world together. We are a global leader in the production of innovative aluminum products and solutions and the world's largest recycler of aluminum. Our ambition is to be the leading provider of low-carbon, sustainable aluminum solutions and to achieve a fully circular economy by partnering with our suppliers, as well as our customers in the aerospace, automotive, beverage can and specialties industries throughout North America, Europe, Asia and South America. Novelis had net sales of \$12.3 billion in fiscal year 2021. Novelis is a subsidiary of Hindalco Industries Limited, an industry leader in aluminum and copper, and the metals flagship company of the Aditya Birla Group, a multinational conglomerate based in Mumbai. For more information, visit [novelis.com](https://www.novelis.com)

Capgemini is a global leader in partnering with companies to transform and manage their business by harnessing the power of technology. The Group is guided everyday by its purpose of unleashing human energy through technology for an inclusive and sustainable future. It is a responsible and diverse organization of over 325,000 team members in more than 50 countries. With its strong 55-year heritage and deep industry expertise, Capgemini is trusted by its clients to address the entire breadth of their business needs, from strategy and design to operations, fueled by the fast evolving and innovative world of cloud, data, AI, connectivity, software, digital engineering and platforms. The Group reported in 2021 global revenues of €18 billion.

