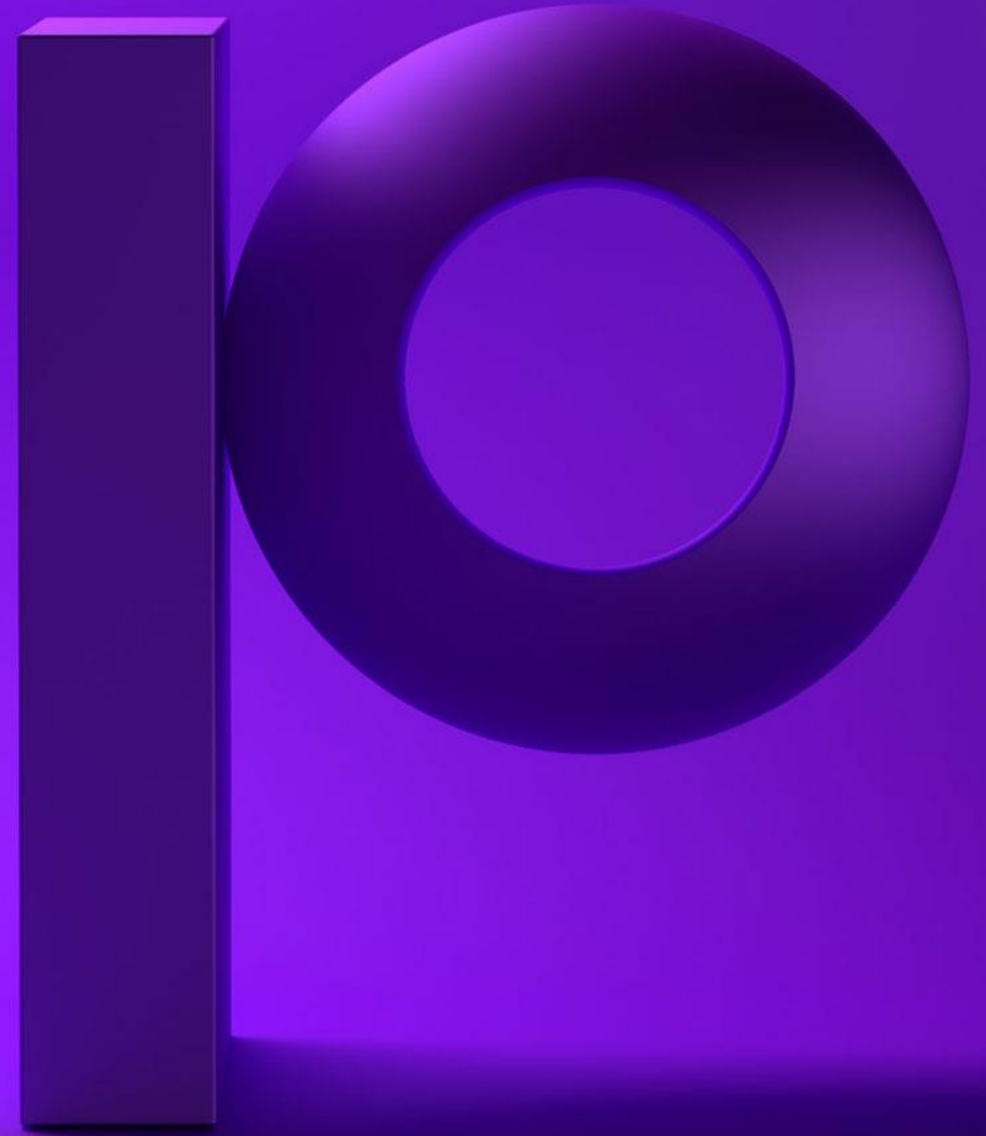


precisely

Change the way you
work with SAP through
automation



Winshuttle is now
part of Precisely,
the leader in data
integrity

The logo for Precisely, featuring the word "precisely" in a white, lowercase, sans-serif font. The letter "p" is stylized with a vertical bar extending downwards. The letter "o" is a large, 3D-rendered sphere with a dark purple shadow underneath it, positioned behind the word. The background is a solid purple color.

precisely



The leader in data integrity

Our software, data enrichment products and strategic services deliver accuracy, consistency, and context in your data, powering confident decisions.

12,000

customers

99

of the Fortune 100

100

countries

2,500

employees

Brands you trust, trust us



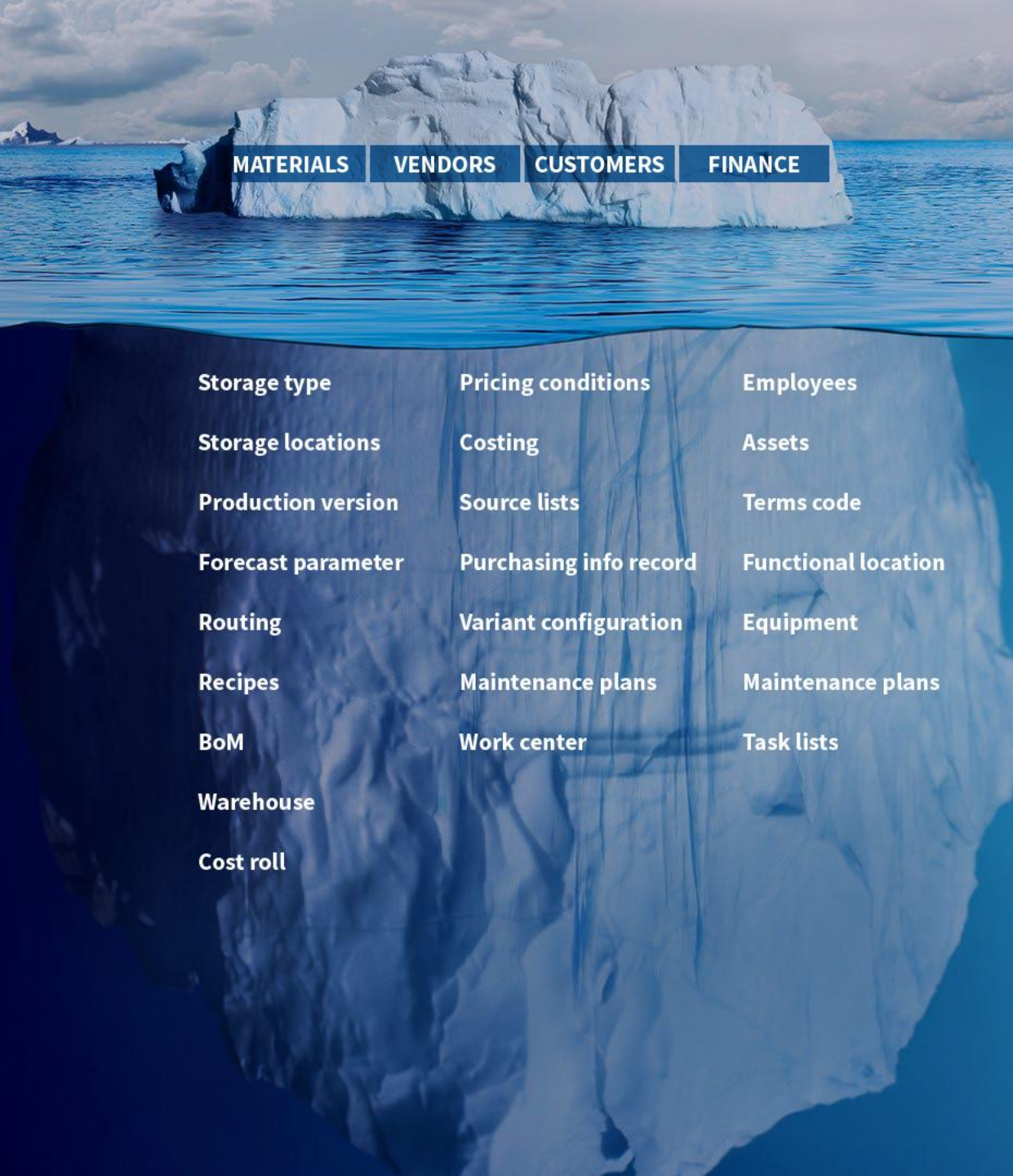
Data leaders partner with us



Why Automate?

Increase revenue streams

Decrease costs



MATERIALS

VENDORS

CUSTOMERS

FINANCE

Storage type

Pricing conditions

Employees

Storage locations

Costing

Assets

Production version

Source lists

Terms code

Forecast parameter

Purchasing info record

Functional location

Routing

Variant configuration

Equipment

Recipes

Maintenance plans

Maintenance plans

BoM

Work center

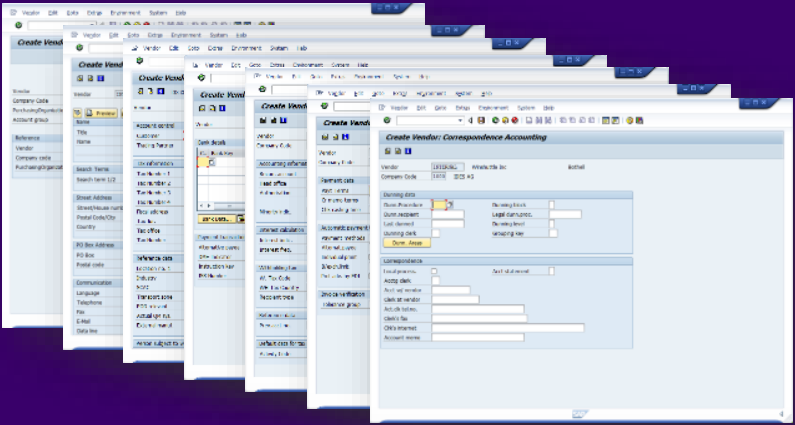
Task lists

Warehouse

Cost roll

The complexity of SAP master data drive a need for automation with respect to both

Reduce Costs Replace multiple SAP screens with automated scripts



Run completed. Successful runs: 14

Log Winshuttle Studio 11.2
SAP System: Client: SAP User - WE6800sigridk
Script Name - MM01_Create_Materials_Script
Mode - Standard (Non Batch without controls)
Start Row - 7 End Row - 0
Number of Errors - 0 Records Uploaded - 14
Date and Time - 2/14/2018 4:28:28 PM
Execution Time - 00:01:26
Run Reason -

Validate Log Winshuttle Studio 11.2
SAP System: Client: SAP User - WE6800sigridk
Script Name - MM01_Create_Materials_Script
Mode - Standard (Non Batch without controls)
Start Row - 7 End Row - 0
Number of Errors - 0 Records Validated - 14
Date and Time - 2/14/2018 4:19:29 PM
Execution Time - 00:01:01
Run Reason -

WINSHUTTLE MM01 CREATE MATERIAL - Finished Goods

RUN RESULTS		DATA INPUT (* means required field)				
No.	RUN LOG	VALIDATE LOG	*Material Number (uses external numbering)	*Industry sector	*Material Type	*Material (Sh
7	Material DEMOMATERIAL-0003 created	Success	DEMOMATERIAL-0003	F	FERT	Demo Ma
8	Material DEMOMATERIAL-0004 created	Success	DEMOMATERIAL-0004	F	FERT	Demo Ma
9	Material DEMOMATERIAL-0005 created	Success	DEMOMATERIAL-0005	F	FERT	Demo Ma
10	Material DEMOMATERIAL-0006 created	Success	DEMOMATERIAL-0006	F	FERT	Demo Ma
11	Material DEMOMATERIAL-0007 created	Success	DEMOMATERIAL-0007	F	FERT	Demo Ma
12	Material DEMOMATERIAL-0008 created	Success	DEMOMATERIAL-0008	F	FERT	Demo Ma
13	Material DEMOMATERIAL-0009 created	Success	DEMOMATERIAL-0009	F	FERT	Demo Ma
14	Material DEMOMATERIAL-0010 created	Success	DEMOMATERIAL-0010	F	FERT	Demo Ma
15	Material DEMOMATERIAL-0011 created	Success	DEMOMATERIAL-0011	F	FERT	Demo Ma
16	Material DEMOMATERIAL-0012 created	Success	DEMOMATERIAL-0012	F	FERT	Demo Ma

Explosion of data to drive revenue generation

Data is the fuel for decision-making today



\$1.3 trillion spent
on digital transformation
last year



80% of CEOs
accelerating digital
transformation



67% spending
more on technology
than people

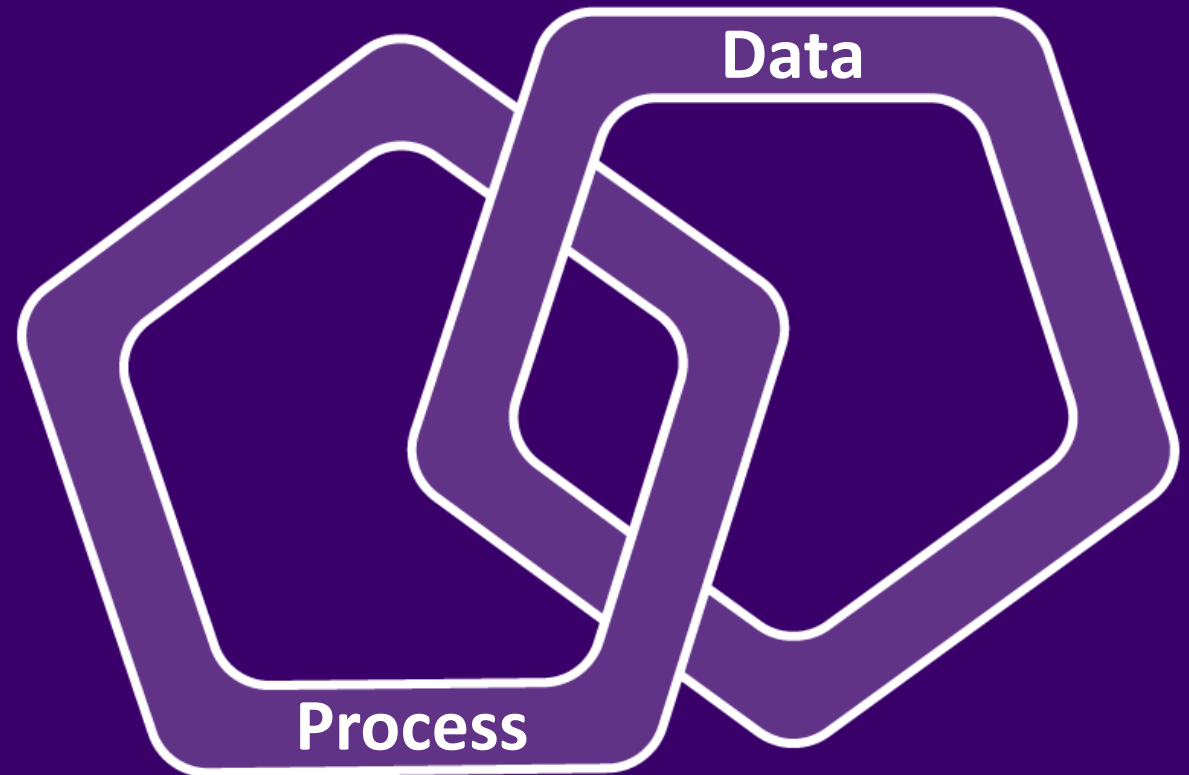


64 Zetabytes
of data today,
growing to 180+
zetabytes by 2025

Process and data have to be tackled together

- Product launches
- Product data management
- Customer onboarding & management
- Vendor onboarding & management
- Asset management
- Financial master data

and more...



Compete and thrive in today's dynamic world



Go faster



Be more agile



Improve the quality of your most important data

Precisely Automate portfolio

Automate Studio

STANDALONE

Exchange data with SAP quickly and easily using Excel

- Data creation and maintenance
- Data migration
- Operational reporting
- Data stewardship

Business users work in Excel



Automate Studio Manager

GOVERNED

Share, manage, & control Precisely across the enterprise

- Basic 2-step workflow
- Centralized management
- Granular control of licenses, users & policies
- Extensive audit and ROI reporting
- Server-side job execution

Business users work in Excel



Automate Evolve

WORKFLOW-ENABLED

Automate and streamline SAP processes using workflows

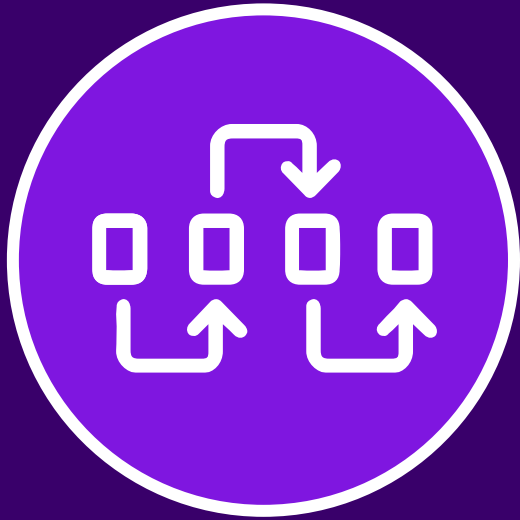
- Advanced form and workflow capabilities
- Advanced data stewardship capabilities via web forms
- Detailed process analytics

Business users work in Excel or web forms



S4 HANA

What's next for SAP automation?



Integration into
larger, complex
processes



Incorporation of
AI and machine
learning



Automating Fiori
processes



Manage SAP data using Excel

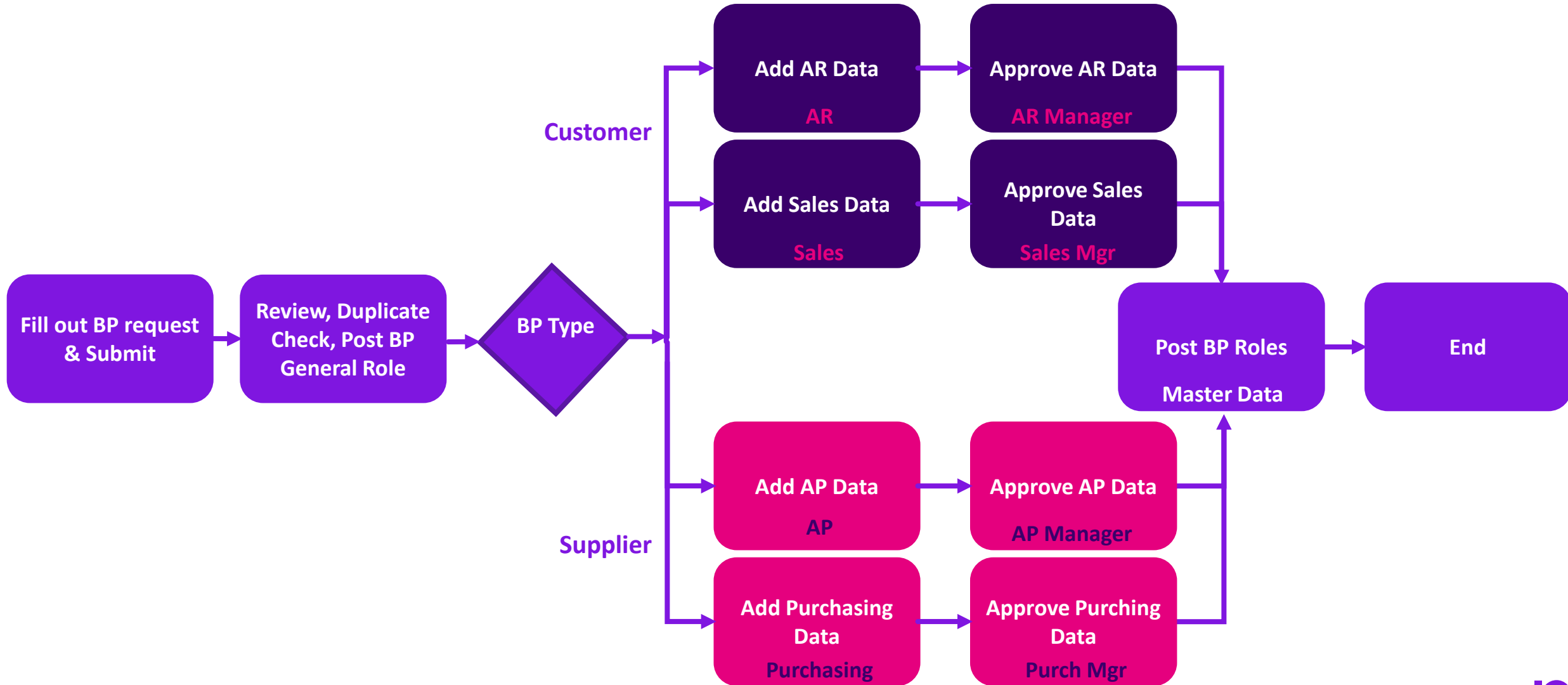
Why stop using a favorite tool of the business to do mass processing?

SAP S/4HANA MODULES

- Requires specific training
- Tiresome manual processes, no matter the interface
- Complex multi-screen transactions and processes, no matter the interface
- “Business Partner is a bear”

The screenshot shows an Excel spreadsheet interface for SAP data processing. The ribbon includes 'Wishuttle Run' with various options like 'Write Headers', 'Log on!', 'Backup Data', 'Start SAP GUI', 'Skip Indicator', 'Specified Rows', 'Run', 'Simulate', 'Debug', 'Validate', 'Schedule', and 'Developer Settings'. The main content area is divided into sections: 'RUN RESULTS' with 'RUN LOG' and 'EXTENDED LOG' buttons; 'DOCUMENT HEADER' with fields for Company Code, Document Date, Posting Date, Reference Document Number, Document Header Text, and Document Type, along with 'Balance Check' and 'Clear Logs' buttons; and 'DATA INPUT' with a table of transaction lines. The table has columns for ID, VALIDATE LOG, General Ledger Account, Debit/Credit Indicator, Amount in document currency, Sales Tax Code, Tax Jurisdiction, Item Text, Cost Center, Order Number, Profit Center, and Work Bn Structure (WBS EL).

Business Partner process flow



SAP Fiori Automation



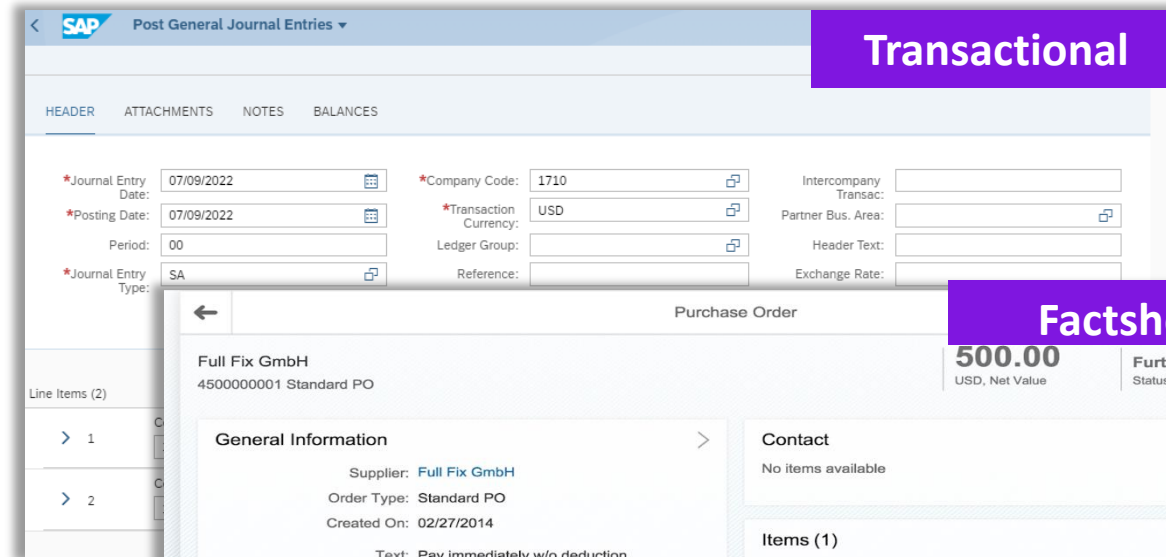
SAP Fiori

Fiori Apps provide a simplified, modern web-based interface

Fiori App types

- Transactional – perform data input/maintenance tasks, ex: create sales order, PO, journal entry and also master data, like BP or product
- Factsheet - display contextual information and key facts about objects, often allows drilldown
- Analytical – role-based insights into real-time operations via charts/graphs

We are targeting
Transactional apps for Fiori
automation



Transactional

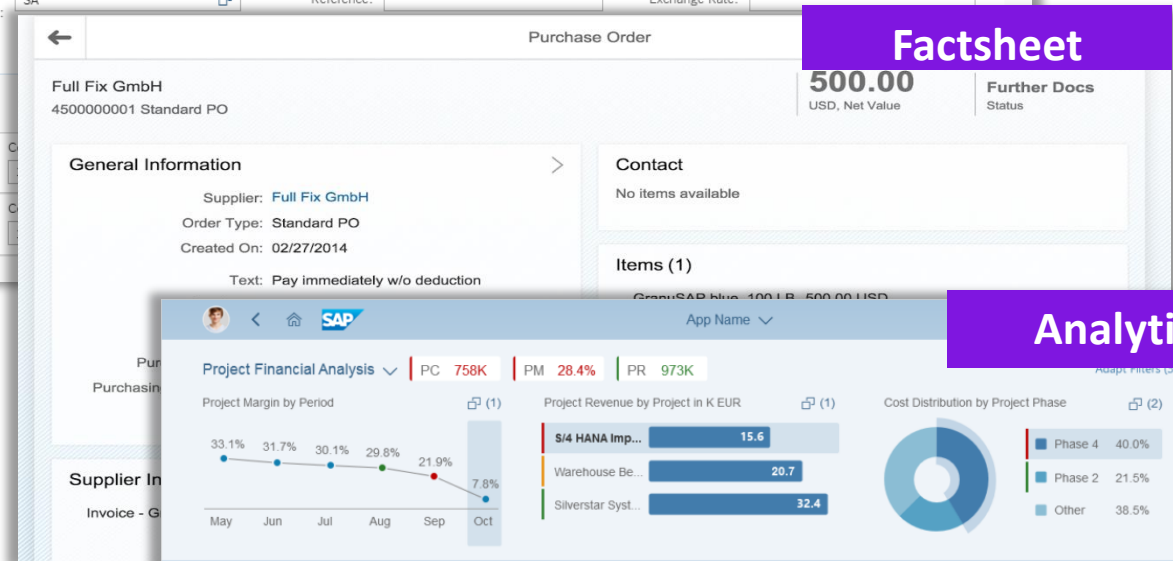
Post General Journal Entries

HEADER ATTACHMENTS NOTES BALANCES

*Journal Entry Date: 07/09/2022 *Company Code: 1710 Intercompany Transac: Partner Bus. Area: Header Text: Exchange Rate:

*Posting Date: 07/09/2022 *Transaction Currency: USD Ledger Group: Reference: Exchange Rate:

Period: 00 Journal Entry Type: SA



Factsheet

Purchase Order

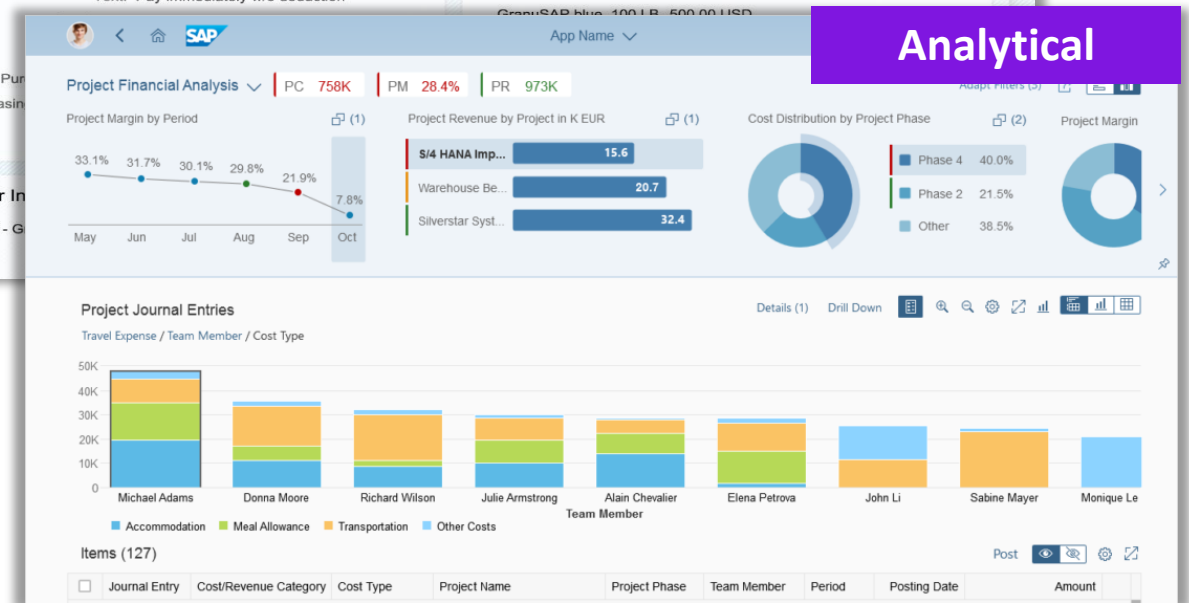
Full Fix GmbH
4500000001 Standard PO

500.00 USD, Net Value Further Docs Status

General Information
Supplier: Full Fix GmbH
Order Type: Standard PO
Created On: 02/27/2014

Contact
No items available

Items (1)
Pay immediately w/o deduction



Analytical

Project Financial Analysis

PC 758K PM 28.4% PR 973K

Project Margin by Period

Month	Margin (%)
May	33.1%
Jun	31.7%
Jul	30.1%
Aug	29.8%
Sep	21.9%
Oct	7.8%

Project Revenue by Project in K EUR

Project	Revenue (K EUR)
S/4 HANA Imp...	15.6
Warehouse Be...	20.7
Silverstar Syst...	32.4

Cost Distribution by Project Phase

Phase	Percentage (%)
Phase 4	40.0%
Phase 2	21.5%
Other	38.5%

Project Journal Entries

Travel Expense / Team Member / Cost Type

Team Member	Accommodation	Meal Allowance	Transportation	Other Costs
Michael Adams	15K	10K	10K	5K
Donna Moore	10K	10K	10K	5K
Richard Wilson	10K	10K	10K	5K
Julie Armstrong	10K	10K	10K	5K
Alain Chevalier	10K	10K	10K	5K
Elena Petrova	10K	10K	10K	5K
John Li	10K	10K	10K	5K
Sabine Mayer	10K	10K	10K	5K
Monique Le	10K	10K	10K	5K

Items (127)

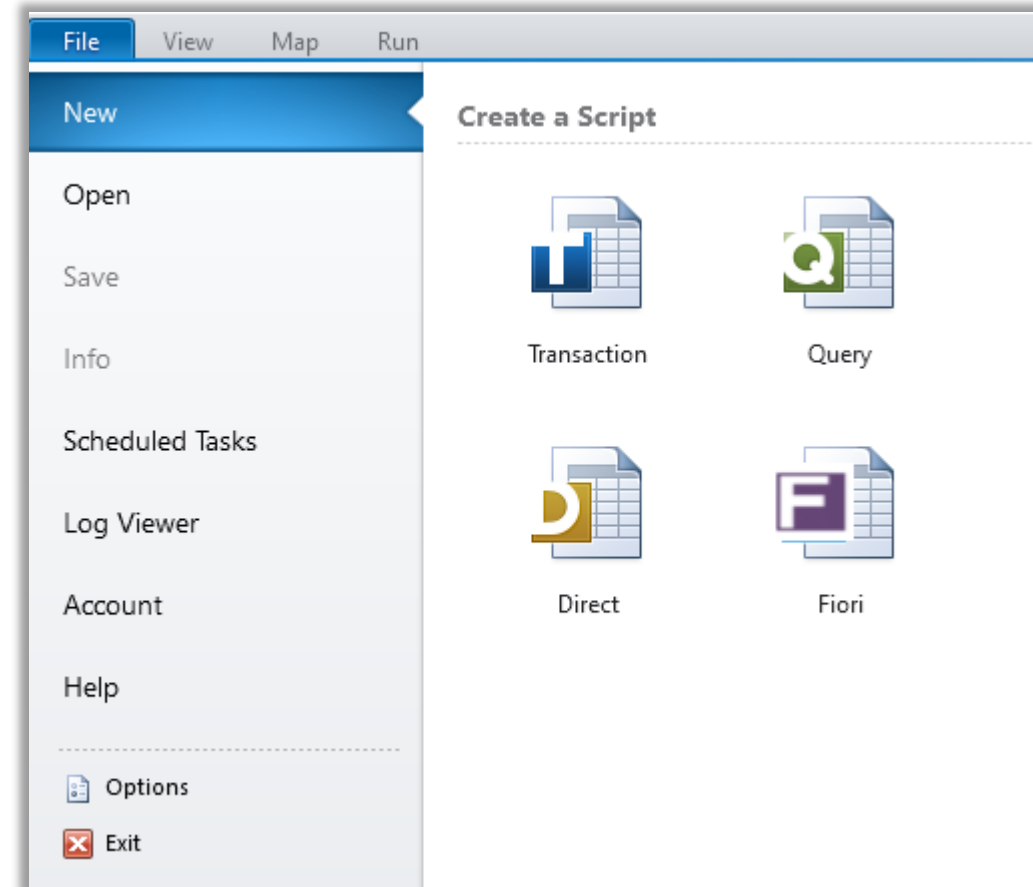
Journal Entry	Cost/Revenue Category	Cost Type	Project Name	Project Phase	Team Member	Period	Posting Date	Amount
---------------	-----------------------	-----------	--------------	---------------	-------------	--------	--------------	--------

SAP Fiori App Automation

We're announcing our automation for Fiori Apps

Automation targets, regardless of in the interface:

- Repetitive tasks
- Higher volume
- Complexity – find object, open object, click edit, click tab, scroll down, drill down, etc.
- Need for efficiency, accuracy, consistency & performance improvements



Questions!



precisely