

S/4HANA Cloud, Public Edition: An Overview

Anurag Barua

Digital Transformation Leader

SAP America



Speaker introduction

- 24 years of SAP experience in a career of 29 years in a variety of roles including SAP product development, delivery/advisory/consulting, pre-sales, & sales; currently work for the SAP S/4HANA Center of Excellence, North America
- Served nearly 100 clients globally & across multiple industry verticals including Public Sector, Utilities, Media, Manufacturing, Pharmaceuticals, Oil & Gas, & Hi-tech among others
- Areas of expertise include SAP Financials, Logistics/Supply Chain, Reporting & Analytics, Data Management & Governance, Cloud technologies, User Experience, & Project/Program Management
- Prolific thought leader: Published over 100 articles & white papers for SAP publications; written 5 SAP books; spoken at nearly 60 SAP conferences globally

Agenda

- Overview & benefits of S/4HANA Cloud, Public Edition
- Capabilities & key features
- Deployment model

S/4HANA Cloud, public edition – fast facts

- ✓ 100% Software-as-a-Service (SaaS) application
- ✓ (Annual) subscription-based license model
- ✓ Enterprise Resource Planning (ERP) in the cloud
- ✓ Entirely organic & relatively new SAP application that's been in the market for nearly 7 years
- ✓ Runs on the HANA database and leverages HANA capabilities
- ✓ Solution needs to be 'deployed' or 'rolled-out' and not 'implemented'
- ✓ 100% mobility-enabled
- ✓ SAP Fiori is the only UI
- ✓ Also referred to as S/4HANA Public Cloud, Multi-tenant Edition (MTE), & Essentials Edition

Why S/4HANA Cloud, public edition?

Affordable



- **Fast** implementation
- **Automatic** upgrade
- Pay-per-Service consumption model
- **Industry best practices** built in

Flexible



- **Out of the box** integration
- Automated **testing tools** included
- **Simple configuration**
- On **any device**

Adaptable



- Easy **in-app extensibility**
- **Side-by-side extensibility**
- Localized in **47 countries**
- Go global with Configuration **Localization Toolkit**

Innovative



- **Intuitive** & simple UX
- SAP Process Automation (ML, IRPA etc.)
- Consume as need/want
- **Continuous** feature delivery
- **Modular** extensibility

Open



- **Open** architecture
- Pre-built integrations available via API Hub
- **Standardize**
- **Lower** TCO

Manageable



- **Digital Discovery Assessment** tools
- User Management
- **Utilization** transparency
- Automated **testing tools** included

Resilient



- **Best in class** uptimes
- **Rapid Disaster Recovery** capability
- **Mission critical** response times.

Secure



- **Cloud security** and compliance
- Backup and **disaster coverage**
- **Data protection**

Scalable



- 24 hour **rapid provisioning**
- Commercial & technical flex
- **3-System** Landscape
- FUE Model

Sustainable



- DC powered by **renewable energy**
- Integrated with **Sustainability Portfolio**

Leader in Finance and Service-Centric Domains

Gartner

SAP S/4HANA Cloud [is a Strong Leader](#) in the 2022 Gartner Magic Quadrant™ for Service-Centric Cloud ERP

Gartner notes that SAP S/4HANA Cloud is a “100% managed SaaS cloud solution with a comprehensive breadth of features. Strengths included strong financial management product vision and breadth, including core management, treasury, analytics, and planning.”

Magic Quadrant

Figure 1: Magic Quadrant for Cloud ERP for Service-Centric Enterprises

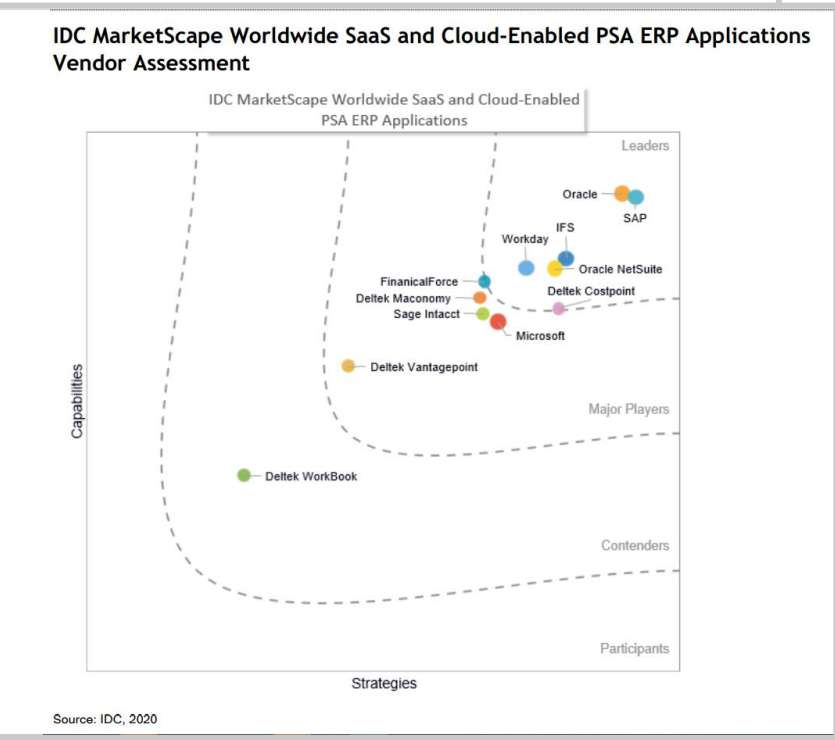


Gartner

SAP S/4HANA Cloud is a Leader in the 2021 Gartner Magic Quadrant™ for Cloud Core Financial Management Suites for Midsize, Large and Global Enterprises



Strong Leader in the 2020 IDC MarketScape™ for Cloud-Enabled PSA ERP Applications Vendor Assessment



Strong Leader in the 2020 IDC Worldwide SaaS and Cloud-Enabled Enterprise Finance and Accounting Applications Vendor Assessment

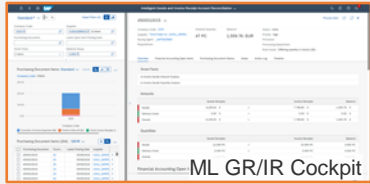
Agenda

- Overview & benefits of S/4HANA Cloud, Public Edition
- Capabilities & key features
- Deployment model

SAP S/4HANA Cloud Scope Highlights

Accelerate growth & unlock efficiencies
with **900+** ready-to-run best industry business processes

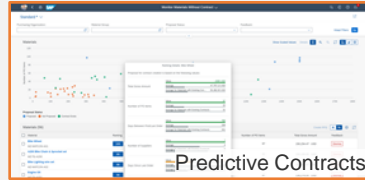
Finance



ML GR/IR Cockpit

- Accounting & Financial Close
- Financial Operations
- Cost Management
- Treasury
- Enterprise Risk & Compliance

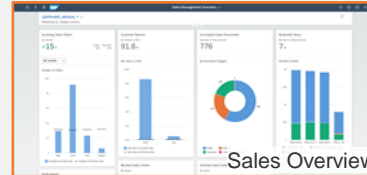
Procurement



Predictive Contracts

- Procurement of Direct Materials & Services
- Supplier Management
- Central Procurement

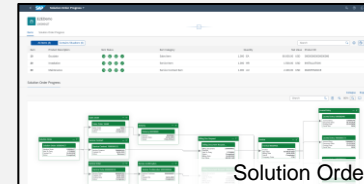
Sales



Sales Overview

- Sell from Stock
- Sell Services
- Rebates & Commissions
- Convergent & External Billing

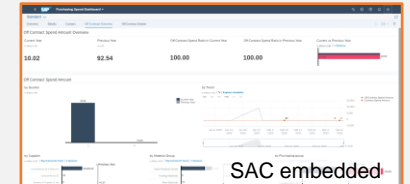
Service



Solution Order

- Sell, deliver, bill, and monitor a combination of physical goods and services as one solution offering

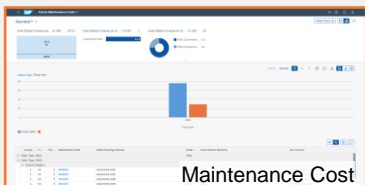
Cross Functions



SAC embedded

- Master Data, Data Migration, Data Protection & Privacy, Information Lifecycle Management
- Integration Capabilities
- Legal Content Management

Asset Mgmt.



Maintenance Cost

- Resource scheduling for maintenance planner
- Enhanced collaboration and review

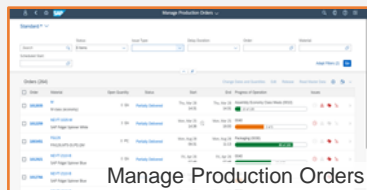
Supply Chain



aATP Release for Delivery

- Warehouse Outbound & Inbound Processing
- Core Inventory Management
- (Advanced) ATP Processing

Manufacturing



Manage Production Orders

- Material Requirements Planning with Demand Driven and/ or predictive MRP
- Make to Stock & Make to Order
- Quality Management

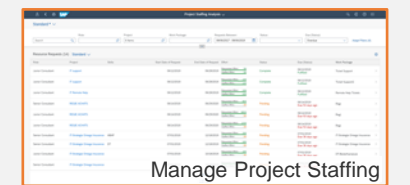
R&D



Manage Product Compliance

- Product Compliance
- Enterprise Portfolio & Project Mgmt.
- Variant Configuration

Industry Capabilities

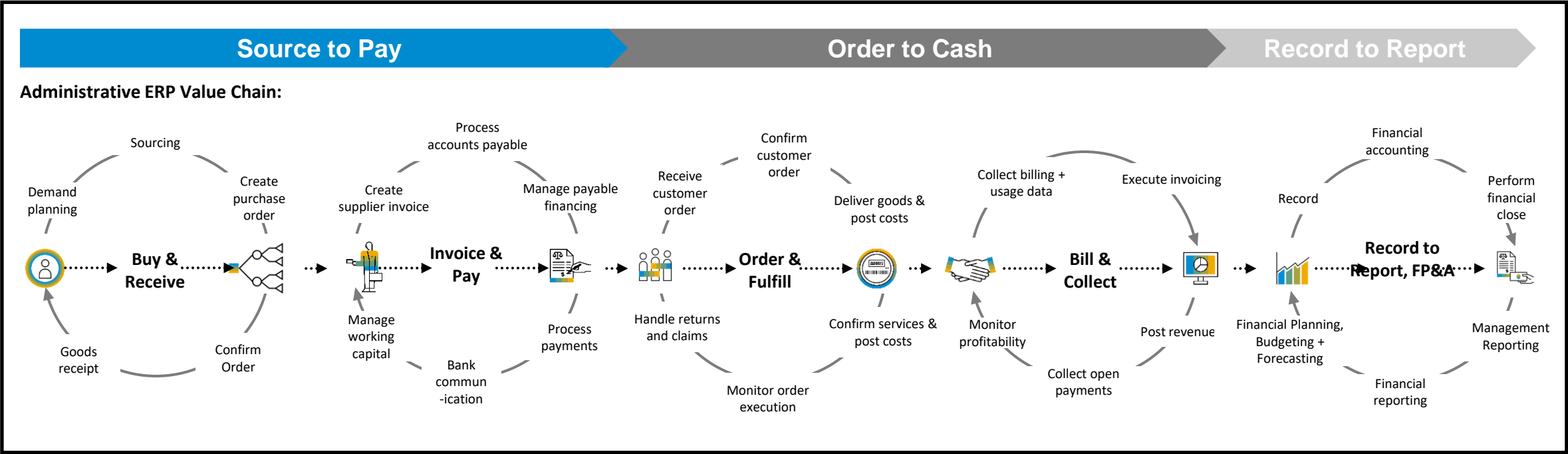


Manage Project Staffing

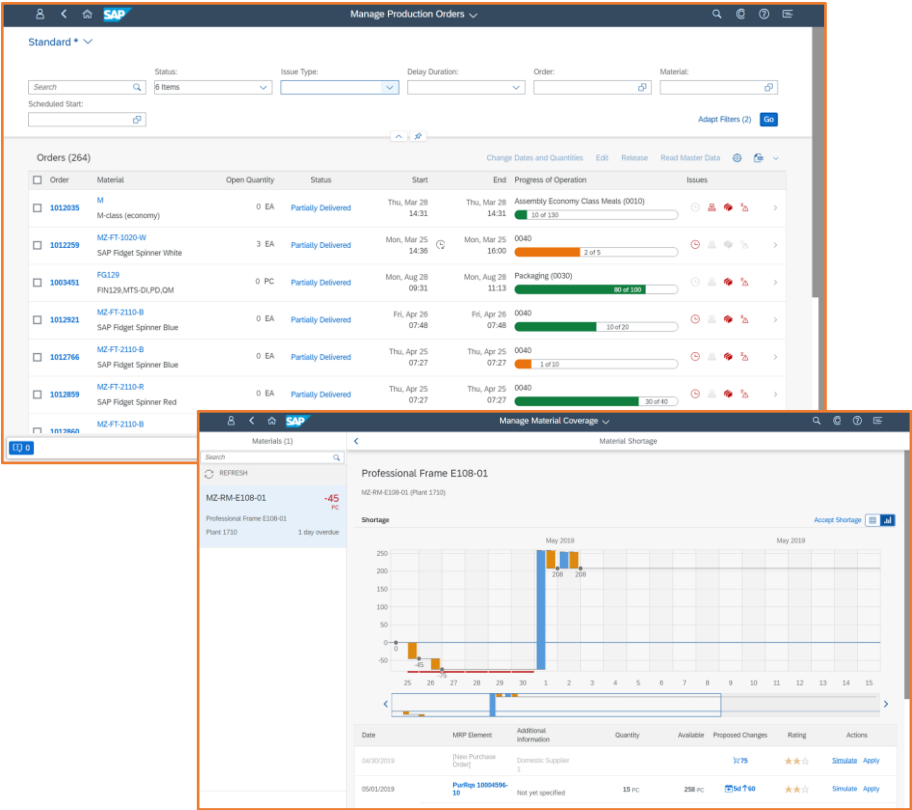
- Professional Services
- Public Sector
- Higher Ed
- Manufacturing
- Mining Services

End-to-End, Proven Best Industry Practices

COMPREHENSIVE ACROSS INDUSTRIES & LINES OF BUSINESS
PROVIDING AGILITY AS INDUSTRIES BLUR & NEW MODELS ARE INTRODUCED



World-class UX with SAP Fiori

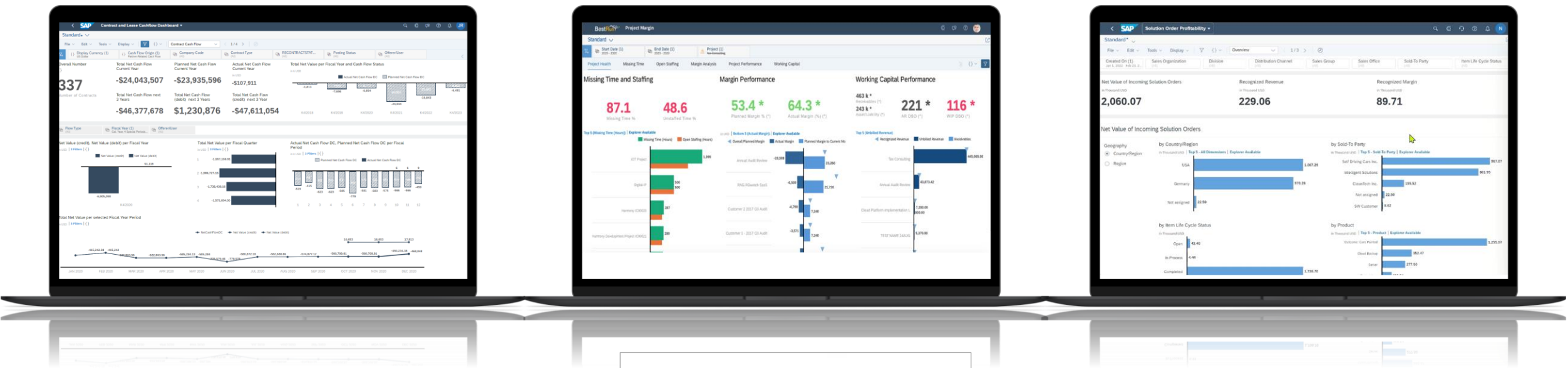


Embedded intelligence helps unlock efficiencies

Discover embedded insights
Data-driven decisions for measurable outcomes

React with situation handling
Exception-based notifications for insight to action

Automate SAP Process Automation
Multiple bot workflows for execution (attended + unattended)



7 Times
increase in order processing capacity
Streamlining Order-to-Cash
processes increases capacity for
seasonal sales peaks



SAP S/4HANA Cloud
Automated and Transparent Order to Cash Process

THE BEST RUN 

42%
of sales orders automated
Integrating Solutions
for a real-time overview of
the entire go-to-market channel

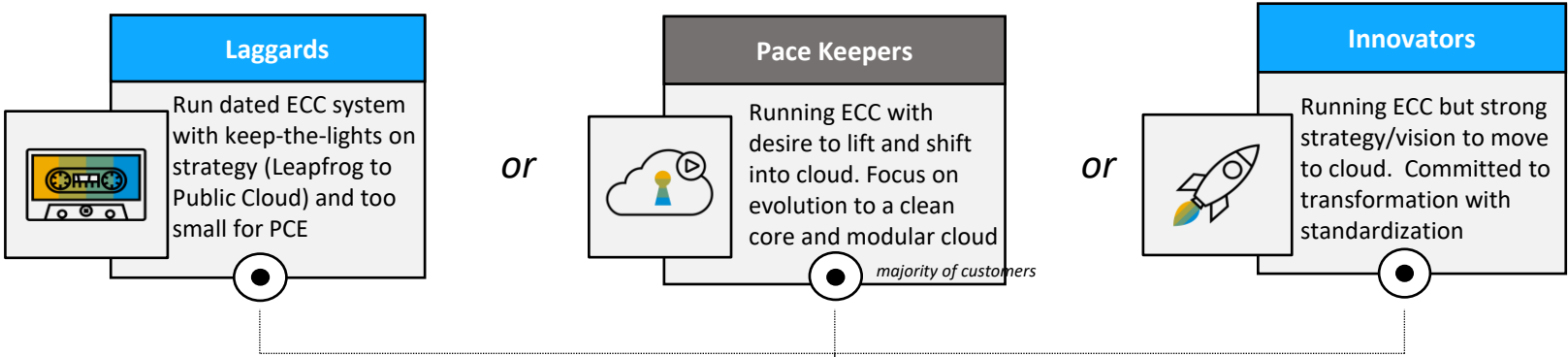
2-tier ERP model for large enterprises (on SAP ECC or S/4HANA)

with S/4HANA Cloud, public edition as the 2nd tier



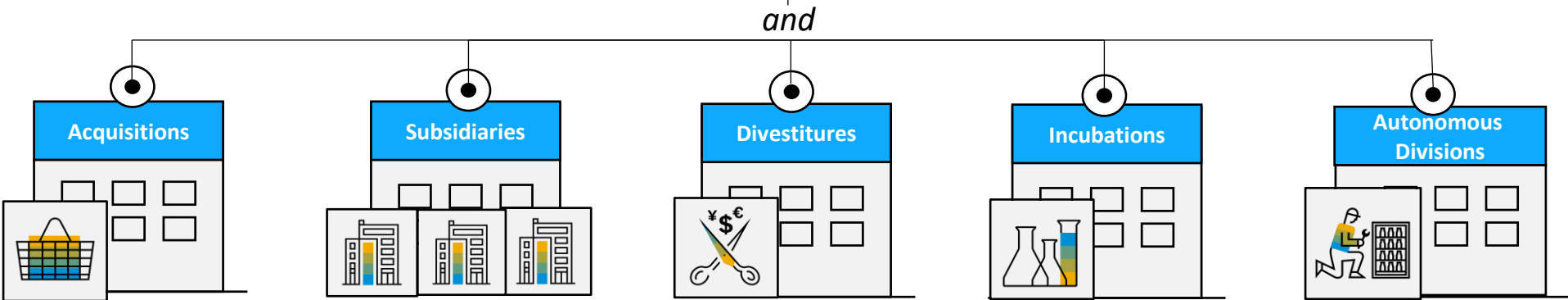
Two-Tier ERP works for a mix of customer profiles:

Tier 1
ECC Installed Base
Three distinct profiles

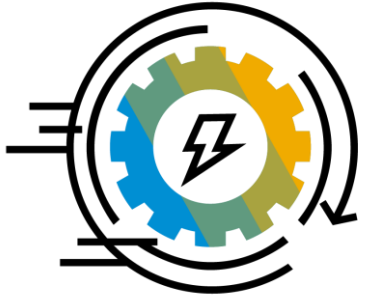


Tier 2
Five distinct profiles

Existing ERP customers who have Tier 2 scenario requirements due to need for agility or step based transformation to the public cloud



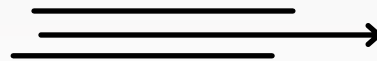
Upgrade frequency



- ✓ SAP has accelerated the delivery of new business innovations
- ✓ Coming from a quarterly release cycle, we now have a continuous feature delivery through **monthly updates**. With this approach, our customers have the option to access new capabilities in a nondisruptive manner every month
- ✓ Twice a year, we will provide the usual system upgrades – entailing the latest, and more substantial developments.
- ✓ New enhancements can be leveraged in a fast way, compared to old legacy systems where upgrade project takes month or years.

1

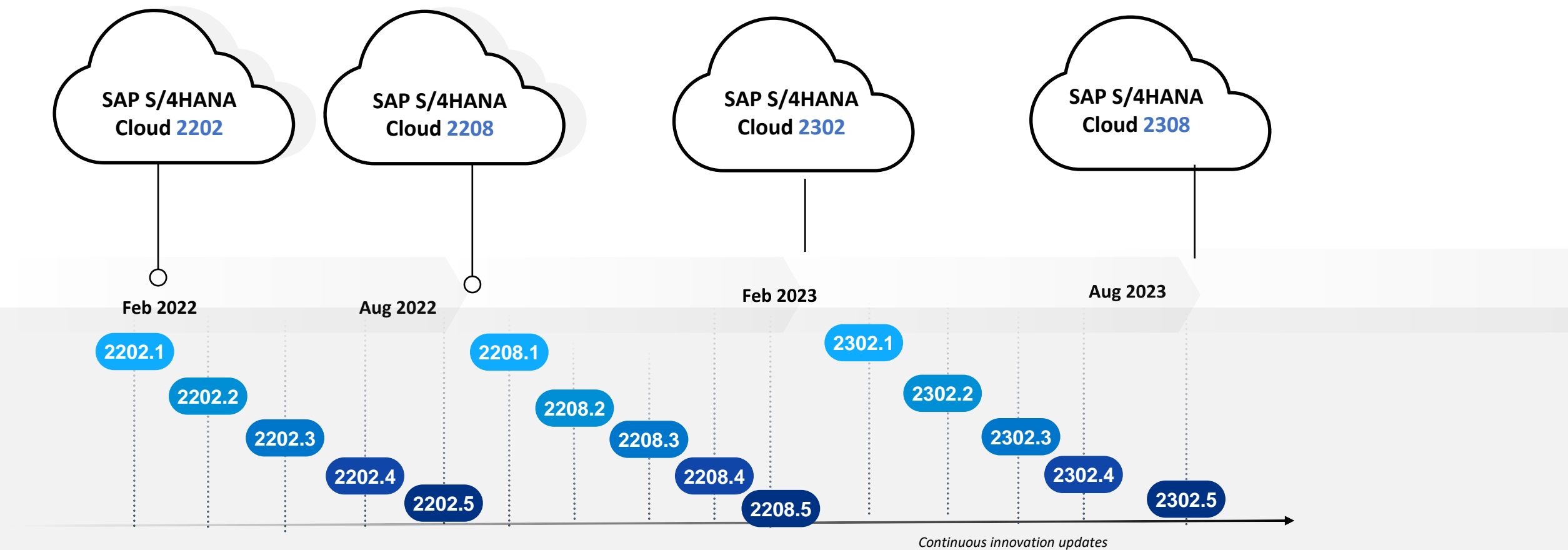
Release in
February



2

Release in
August

SAP S/4HANA Cloud: Release and Update Cycle*



Compliance & certifications

Cloud Operations and Management	Cloud Operations and Management
SaaS Application	Applications
	Middleware / Platform
System Management	System
	Database
	Operating System
	Virtualization
IT Infrastructure Management	Servers
	Storage
	Networking
	Data Center Facilities

Baseline:
ISO 27001 / ISO 9001/ ISO 22301

- ISO 27001: Certification of a Information Security Management System
- ISO2017 & ISO27018
- ISO 9001: Certification of a Quality Management System
- ISO 22301: Certification of Business Continuity Management System

Financial Reporting:
SOC 1 / SSAE18

- Report on Controls at a Service Organization relevant to User Entities' Internal Control over Financial Reporting
- Can be handed out only to customers, restricted use/distribution
- Design assessment and detailed operating effectiveness testing

Trust Service Principles:
SOC 2

- Report on Controls at a Service Organization relevant to Security, Availability and Confidentiality
- Can be handed out to customers and prospects, use/distribution may be restricted
- Design assessment and detailed operating effectiveness testing

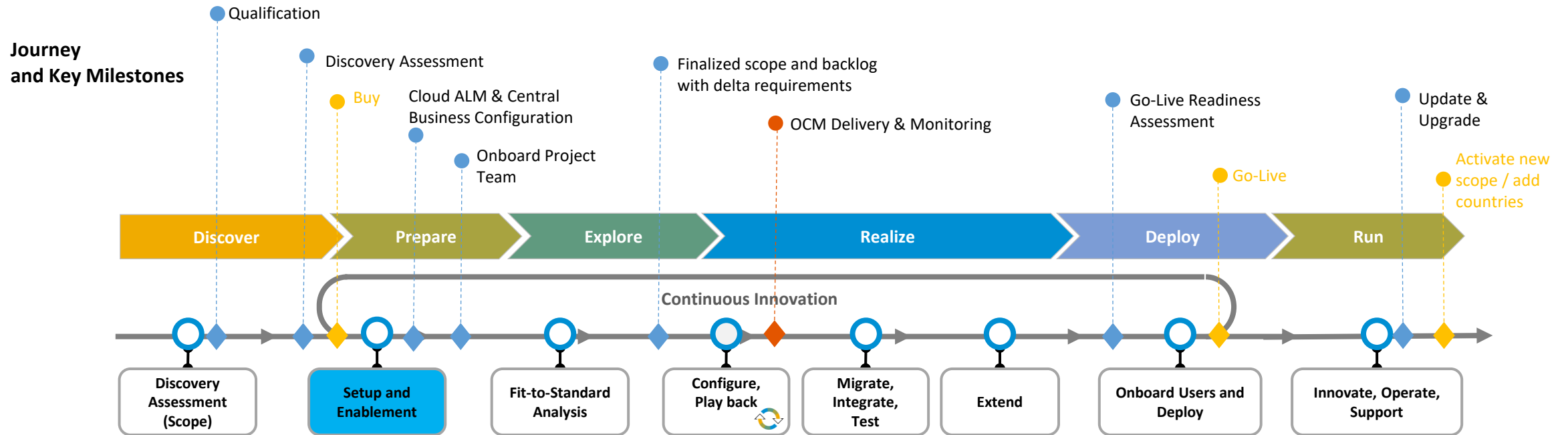
All SAP S/4HANA Cloud Certification will remain valid for SAP S/4HANA Cloud Hosted on Azure, GCP Infrastructure

Agenda

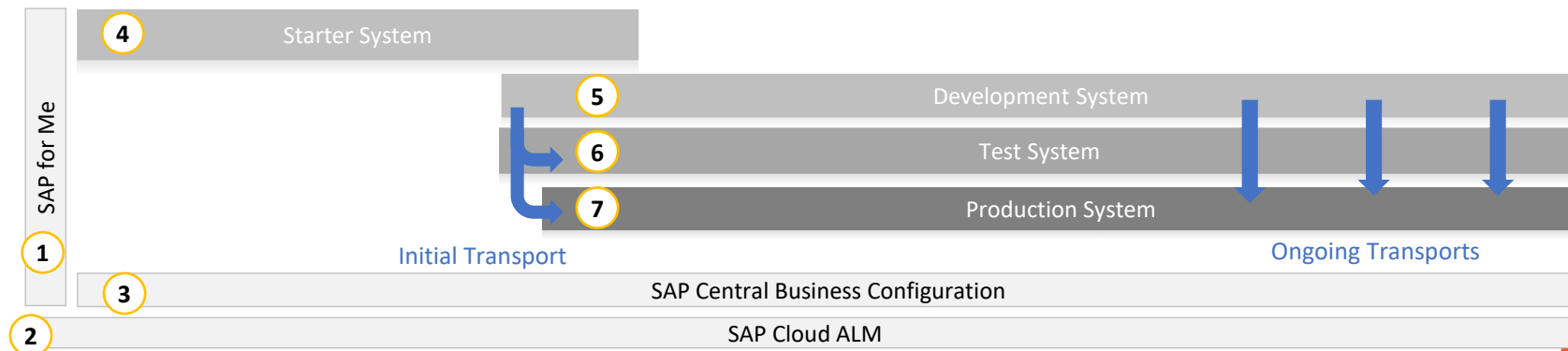
- Overview & benefits of S/4HANA Cloud, Public Edition
- Capabilities & key features
- Deployment model

SAP Activate for 3-system landscape

Journey Overview, Key Milestones and System Landscape over time

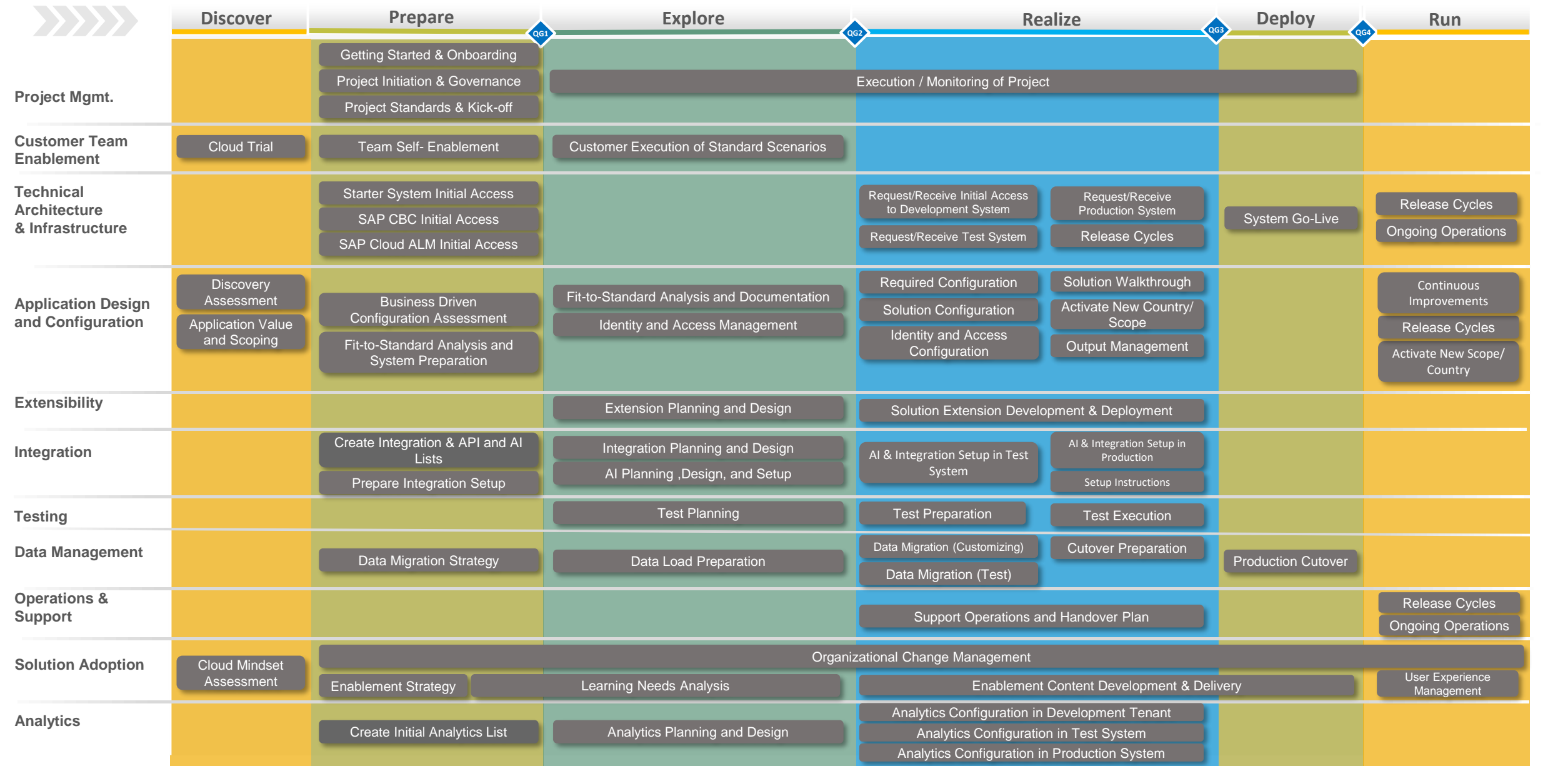


System Landscape



x Sequence of provisioning

SAP Activate for S/4HANA Cloud, public edition



Cloud Mindset – key ingredient for success

- A fundamental new way of thinking in the cloud era. It requires the ability to rapidly adopt standard best practices and leverage cloud technology to engage in continuous innovation
- The adoption of a cloud mindset enables an organization to achieve higher agility, flexibility and collaboration thereby optimize the use of business and technological innovations that the cloud offers.
- Customer committed to cloud mindset embrace:
 - ❖ Adopting standard processes
 - ❖ Running the solution in a SAP selected Data Center
 - ❖ Accepting innovation and update cycles

Customer Flipping Book

Ready-To-Run Customer Flipping Book



Questions?

For questions after this session, contact me at Anurag.barua@sap.com

Thank you.

For questions after this session, contact me at Anurag.barua@sap.com