

Manage External Workforce with SAP Fieldglass

April 2023

CGI



Introduction



Christophe Hebert-Clusiau

Director Consulting Expert – SAP Intelligent Spend Management
Practice Lead



Yves Stanojlovic

Vice-President Consulting Services – Head of the SAP Practice
Canada

Agenda

01

About Fieldglass

02

External
Workforce

03

Challenges:
Case for SAP
Fieldglass

04

SAP Fieldglass
Integration

05

Implementation,
Timelines and
Lessons
Learned

SAP Fieldglass – Vendor Management System

Contingent
Workforce



Build and Manage
External Workforce

Services
(SOW)



Covers all
Statements of work
activities from the bid
to the agreement
closing

Assignment
Management



Manage Work
assignment to get
easier and faster
delivery

Profile Worker



Track workers outside of
job posting, work order,
or SOW for complete
workforce headcount

External Workforce, what does it mean?

Out-sourced

Non-full time

Non-payroll workers

Consultants

Gig workers

Freelancers

On-call workers

Contract firm Workers

Temporary Workers

SOW service providers

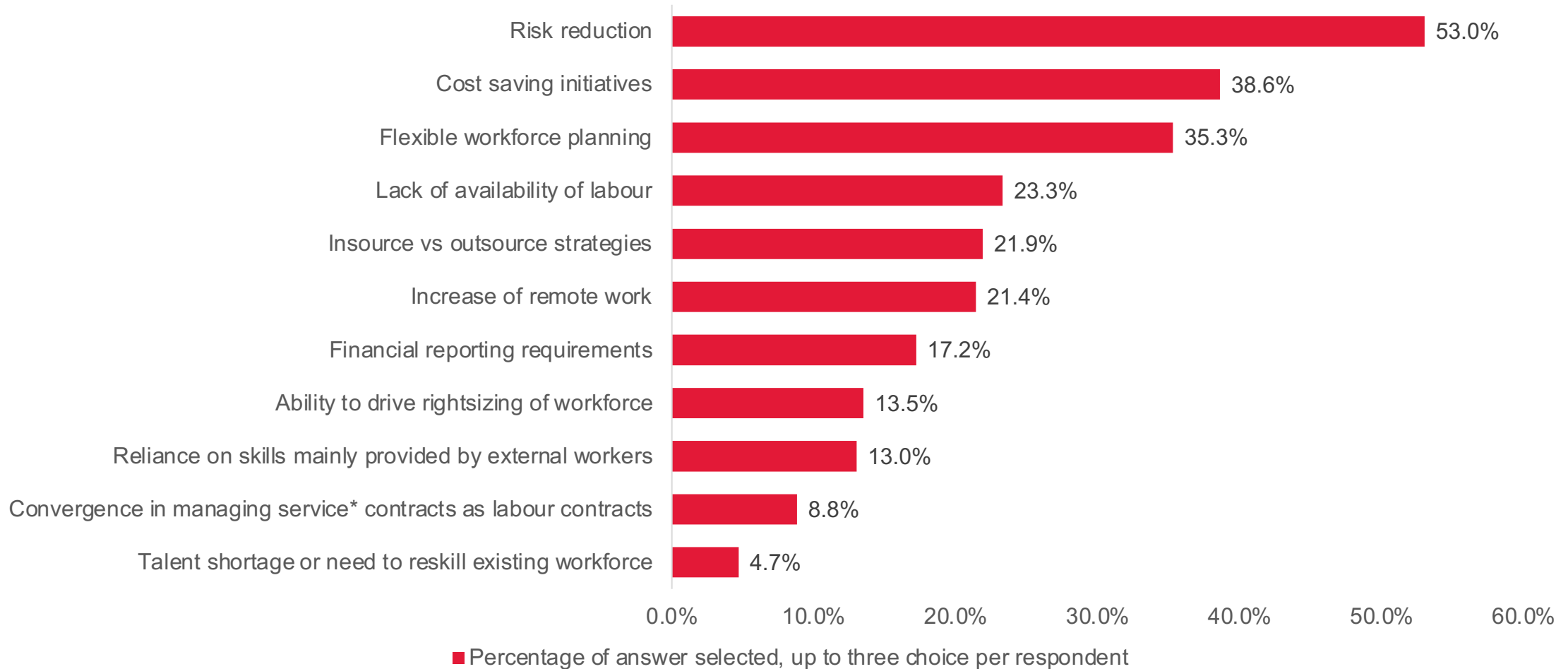
A-typical workers

Independent contractors

Contingent workers

Service procurement

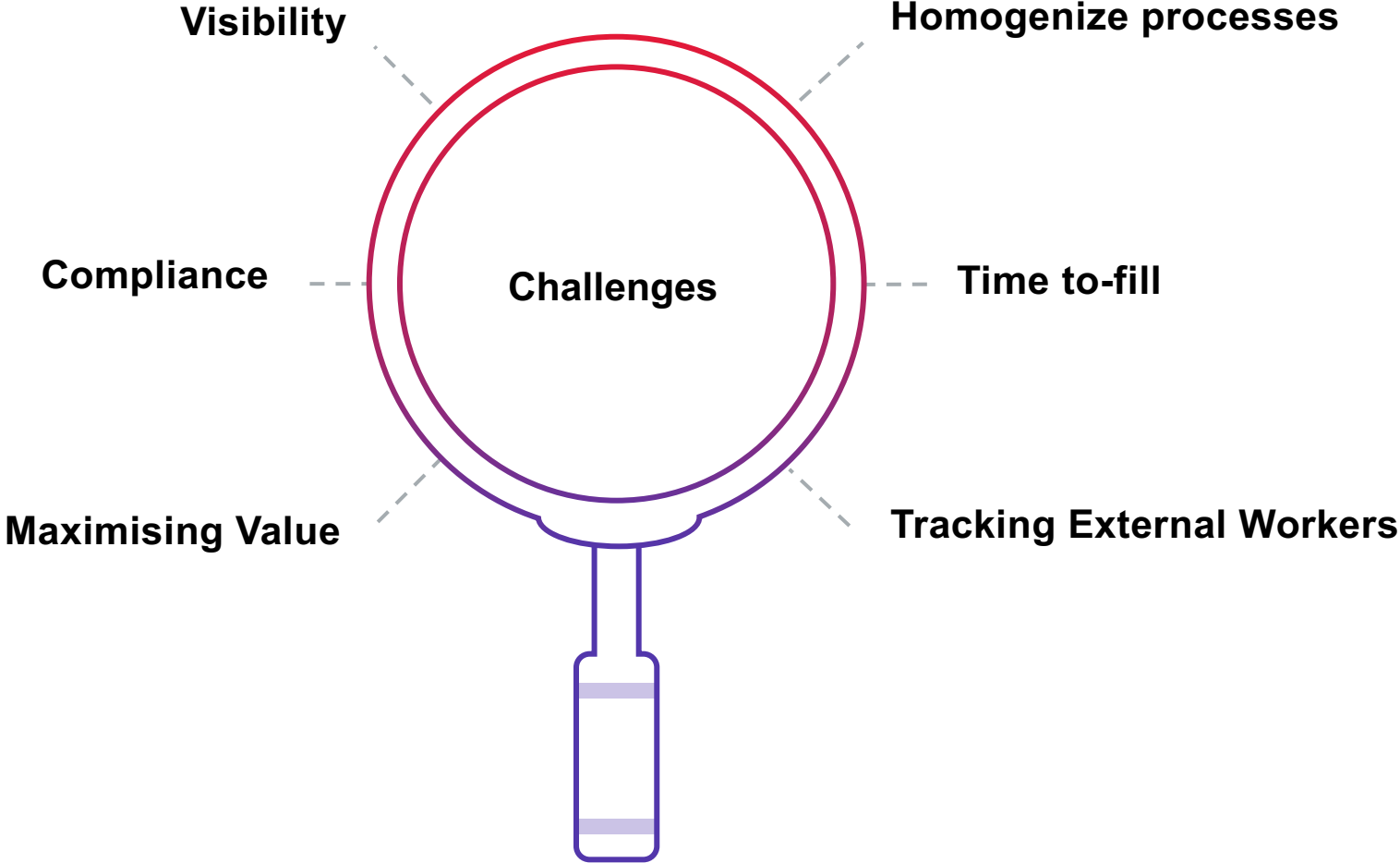
Top reasons organizations are increasing the use of their external workforce



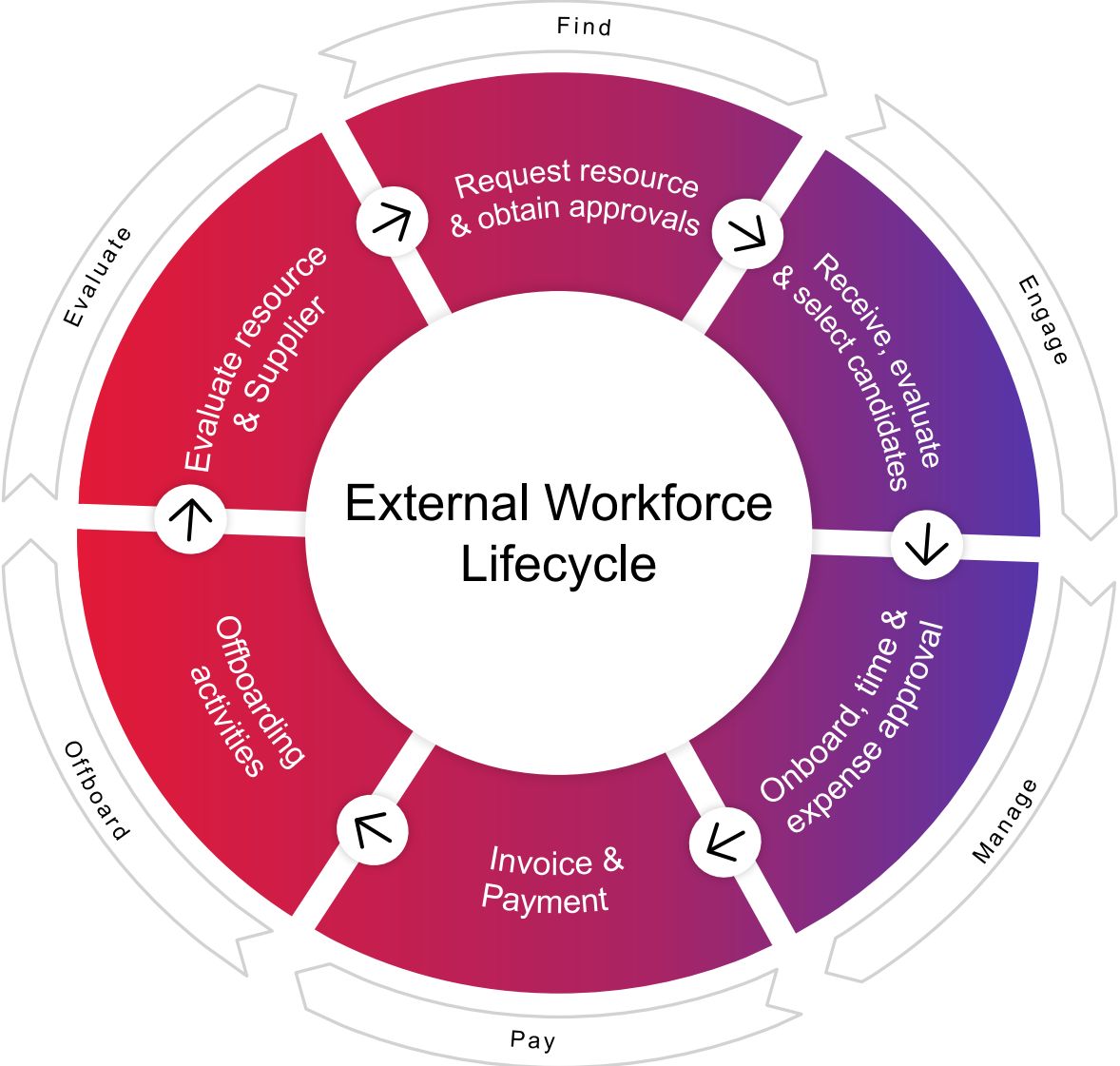
Source: Economist Impact
© 2023 CGI inc.

External

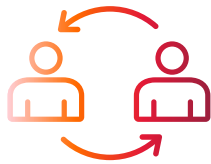
External Workforce – Today’s Challenges



External Workforce Management Lifecycle



Key Benefits of SAP Fieldglass



Automate and streamline your organization's entire process from procuring, managing to pay external labor



Gain Visibility to help reduce costs, enforce compliance, improve decision making and increase efficiency

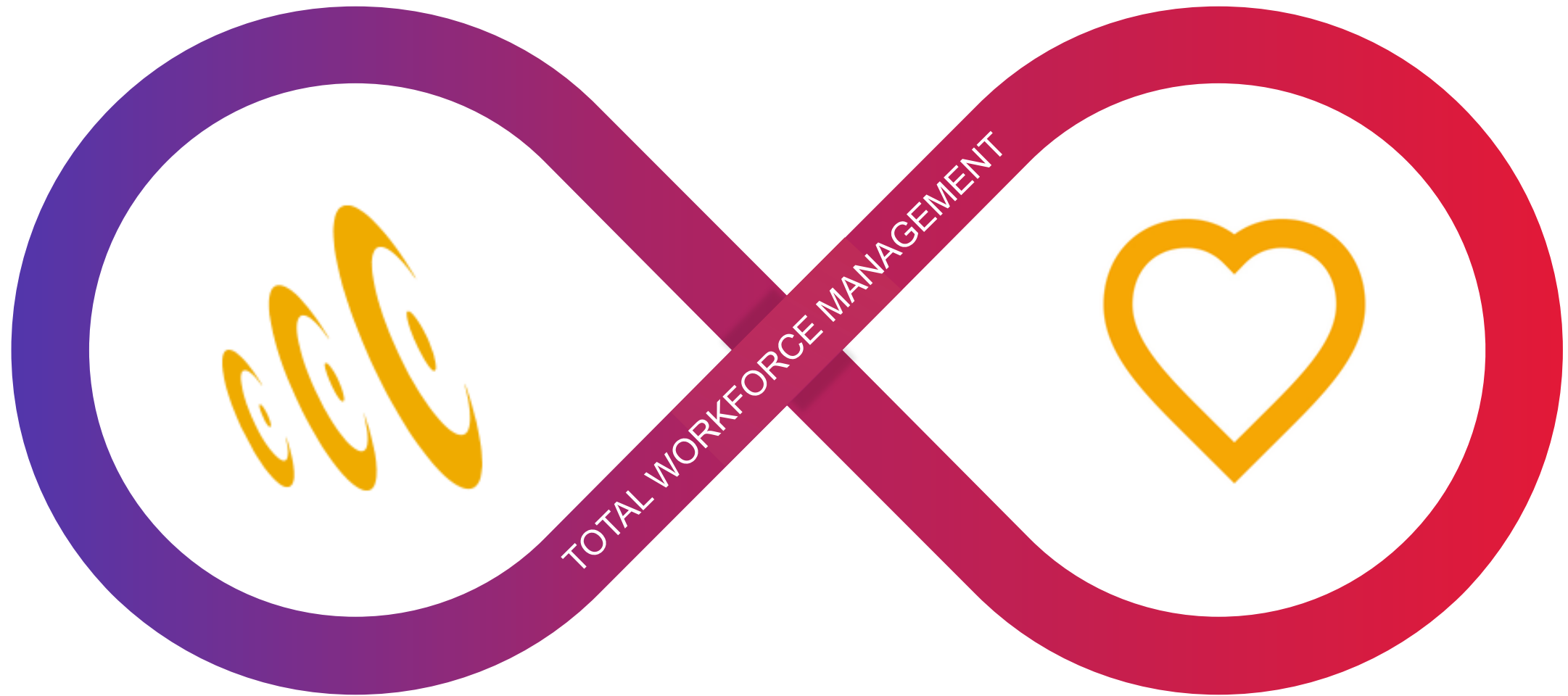


Mitigate risk and ensure safety and security protocols conformity



Integrate with a wide variety of enterprise and self-developed applications and of course includes native integration with SAP.

Total Workforce Management



Integrations

- SAP Ariba Cloud Integration Gateway
- CPI iFlows
- Web Services (Supports Rest and SOAP)
- SAP Business Technology Platform (BTP)
- Standard Connectors
- SFPT

SAP SuccessFactors 

SAP Ariba 


Business
Network




Business Planning &
Consolidation

opentext | vim

and more!

Greenfield and Brownfield Implementations

Net new or Greenfield Implementation:

Installation of SAP Fieldglass without paying attention to existing workers, profiles, and other details. It assumes that the company doesn't have a base of workers and offers a solution to keep track of that data.

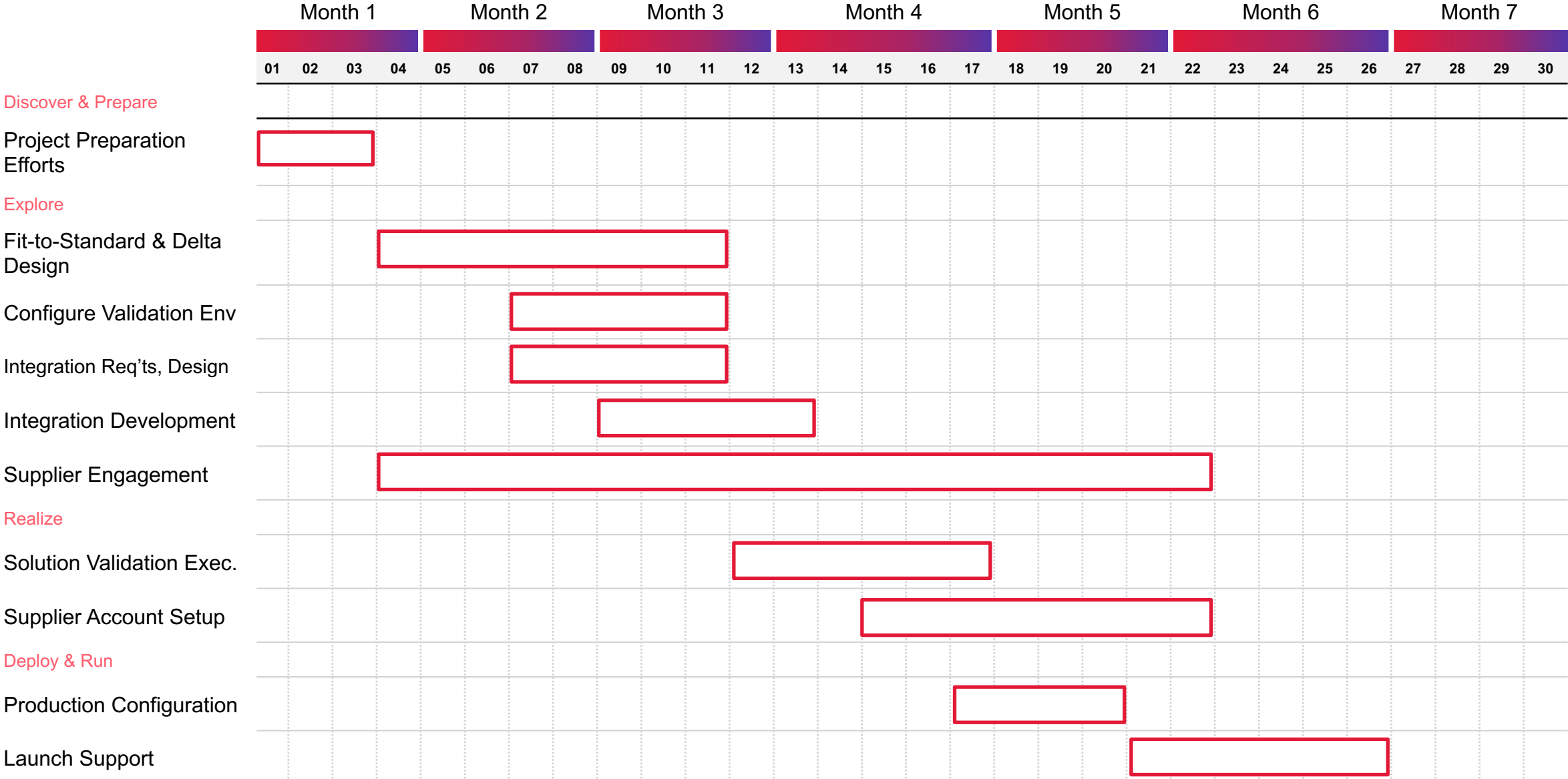
This approach means entering data into worker profiles from scratch.

A migration or brownfield implementation

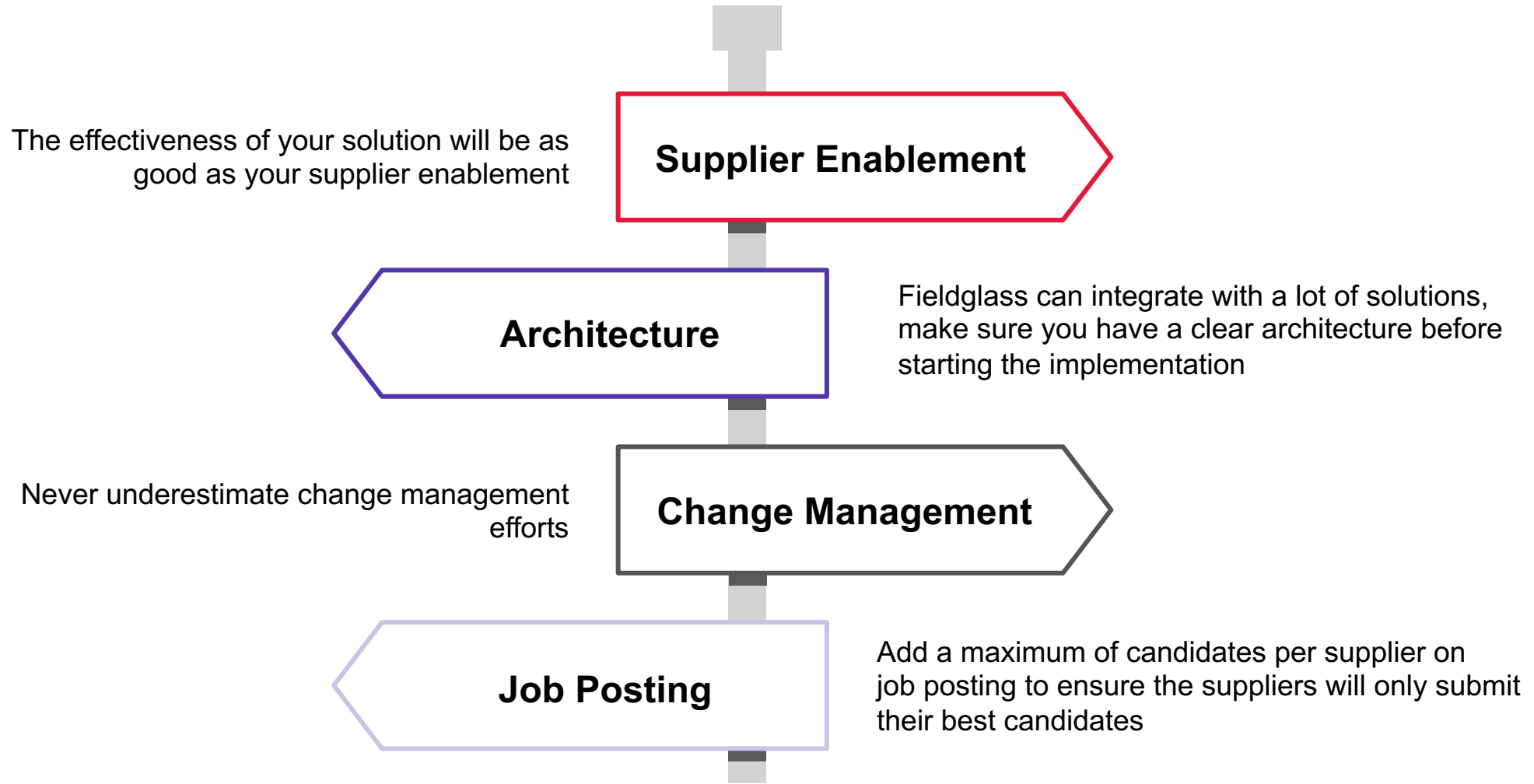
Installation migrates data from an existing worker management platform. Unfortunately, the current data needs to be converted before it can be migrated onto the new platform.

This migration process will take time, as data must be converted from the existing system to SAP Fieldglass.

Typical SAP Fieldglass Implementation Timeline



Lessons Learned and Best Practice



Appendix

CASE STUDY

Improving Statements of work tracking and management

SAP Fieldglass Deployment

Our client's goal was to acquire a solution to help monitoring the work on their construction projects and track. They were experiencing strong delays in invoice payment after deliverable completion and lacking visibility in project progression.

With the help of CGI, the client deployed an optimize SAP Fieldglass solution with the ability to have a better view on their committed spend, real spend and accruals. Also, with SAP Fieldglass SOW module, we were able to streamline and accelerate their invoicing process. Joint Project and Steering Committee were created to track interdependent projects and initiatives. Strict scope controls were in place to ensure price certainty.

Value delivered

- Project monitoring improvements
- Faster SOW Invoice Payment
- SOW lifecycle management (creation, approvals, revision, closure)
- Increased visibility on SOW progression on both client and supplier end.

Highly successful deployment with no major incidents. All teams were highly coordinated and worked successfully together. Project was completed on time, on budget and with a high degree of customer satisfaction.



SAP Fieldglass Deployment – Statements of Work module

Country: Canada

Industry: Energy & Utilities

Contact

SAP Intelligent Spend Management Practice lead

Christophe Hebert-Clusiau /

Director Consulting Expert
christophe.hebert-clusiau@cgi.com



Insights you can act on

Founded in 1976, CGI is among the largest IT and business consulting services firms in the world.

We are insights-driven and outcomes-based to help accelerate returns on your investments. Across hundreds of locations worldwide, we provide comprehensive, scalable and sustainable IT and business consulting services that are informed globally and delivered locally.

cgi.com



CGI