

# Accelerate Performance and Adoption of your Intelligent Enterprise

2023

Public

THE BEST RUN 



# Who I am

Jesse Bernal → SAP Enable Now Expert  
SAP Solution Advisor



**Customer** former SAP Customer for 15 years supporting IT Help Desk and Service Delivery team



**Enable Now** Training technology is my passion with a focus on SAP Companion and SAP Enable Now



**SAP Skills** WM configurator 38 go-lives and 153 warehouse locations supported



**Customer First** focus on making sure our customers know how to use and get value out of our solutions



# Bridge the global skills gap with a skilled workforce

**1B+**

jobs around the world will be transformed by technology<sup>1</sup>

**75%**

of companies have reported talent shortages in 2022<sup>2</sup>

**39%**

of employees are concerned about not getting sufficient training<sup>3</sup>

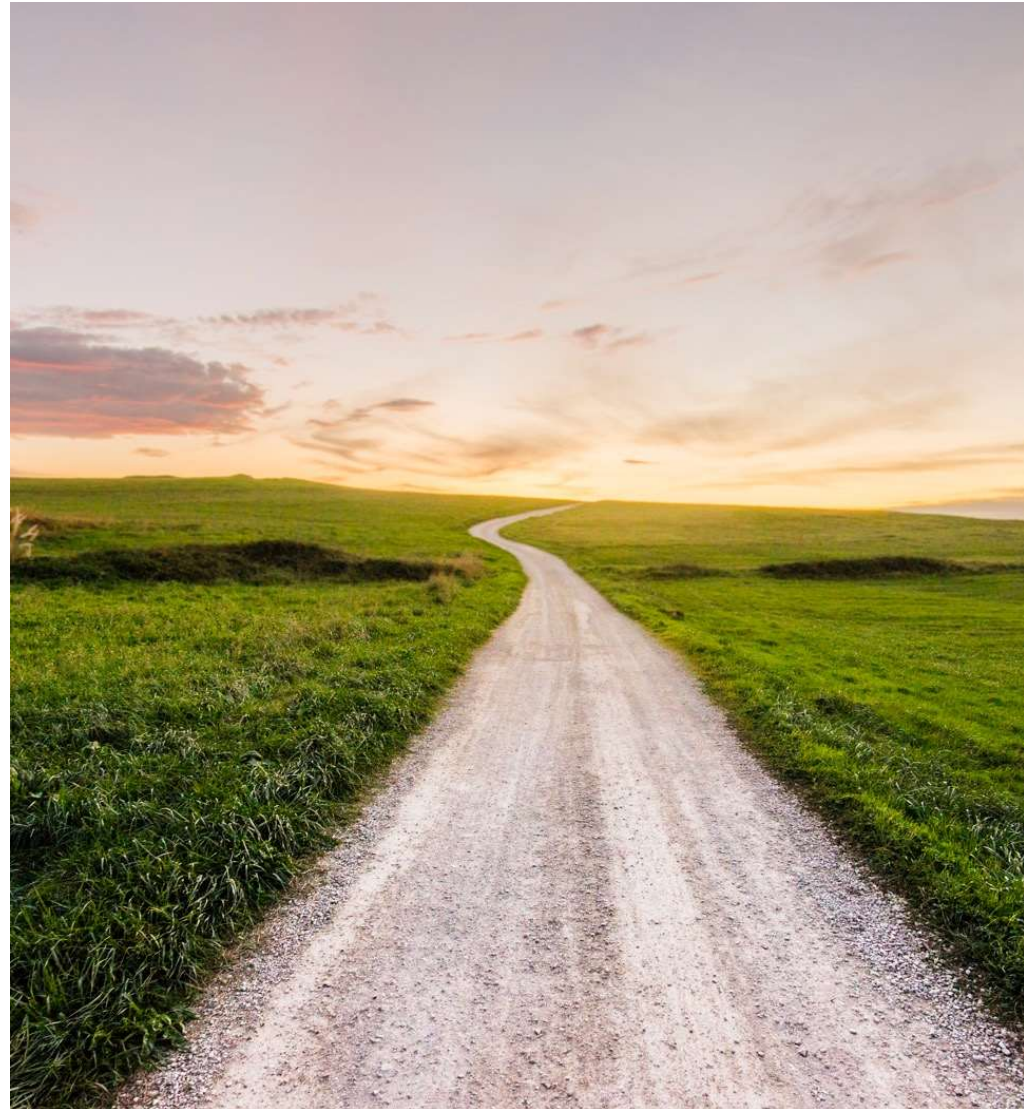


<sup>1</sup> World Economic Forum, "Reskilling Revolution: Preparing 1 billion people for tomorrow's economy", March 2022

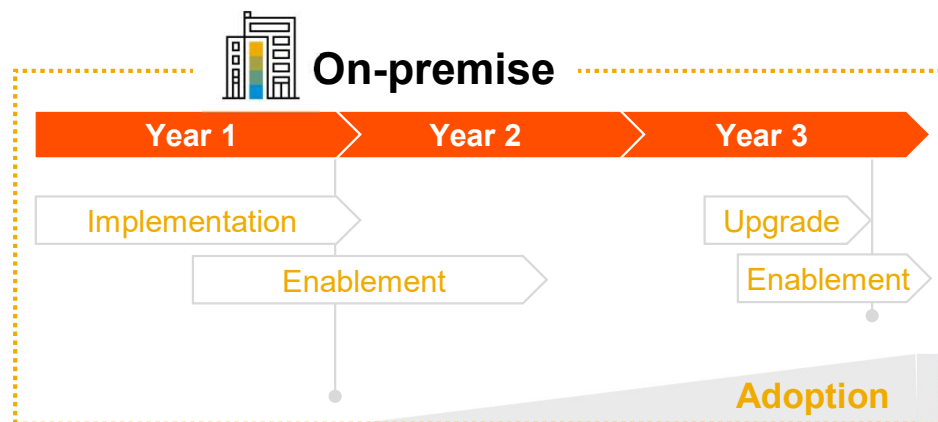
<sup>2</sup> ManpowerGroup, "The 2022 Global Talent Shortage, Infographic, 2022"

<sup>3</sup> PwC, "Global Workforce Hopes and Fears Survey 2022, March 2022"

# **Evolving Reality of Enablement**

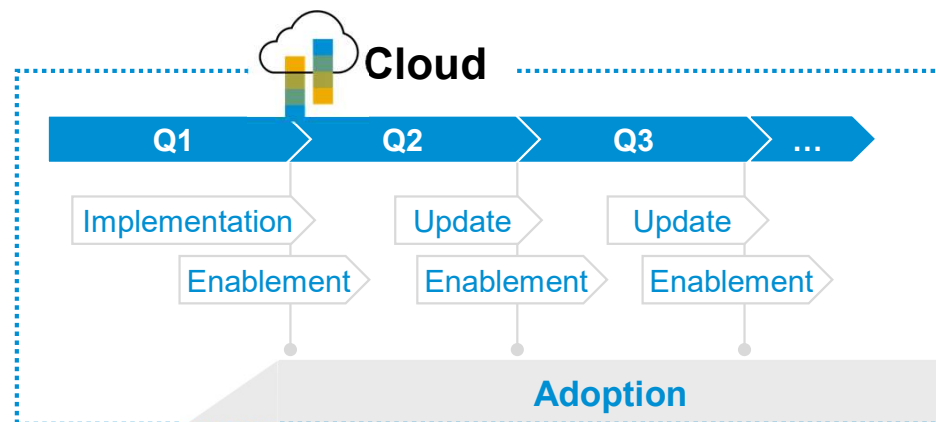


# Challenges of enterprise software adoption



- **Slow** implementation and ramp-up
- **Long** innovation cycles
- **Major changes** with huge intervals in-between

Enablement usually **once in a life time** upon onboarding and change management – often decoupled from workflow



- **Fast** implementation and ramp-up
- **Continuous** innovation cycles
- Many **small changes** on a regular basis

**Continuous** and **integrated** change management required, ideally with **intelligent user assistance**

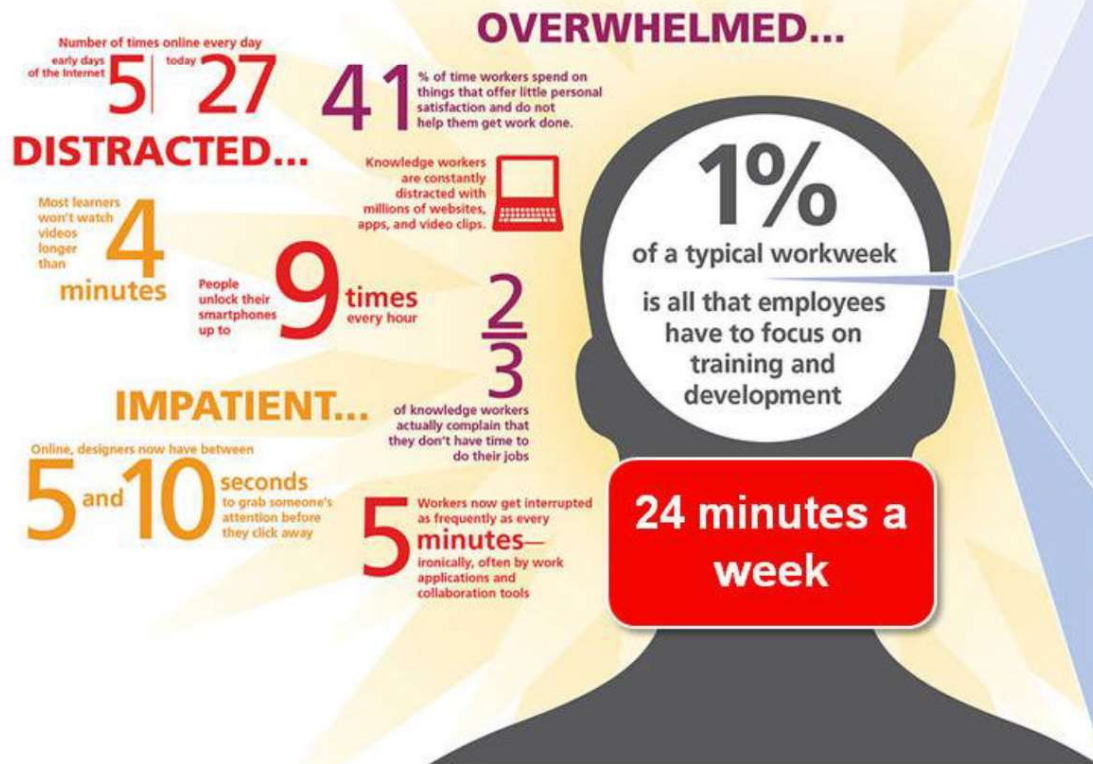


-  Technological change
-  Accelerating globalization
-  Shifting demographics
-  Focus on employee engagement

Driving the need to **radically simplify the business**



# The Reality of Learning Today: 24 Minutes A Week



## UNTETHERED

Today's employees find themselves working from several locations and structuring their work in nontraditional ways to accommodate their lifestyles. Companies are finding it difficult to reach these people consistently and even harder to develop them efficiently.



## ON-DEMAND

Employees are accessing information—and learning—differently than they did just a few years ago. Most are looking for answers outside of traditional training and development channels. For example:



## COLLABORATIVE

Learners are also developing and accessing personal and professional networks to obtain information about their industries and professions.

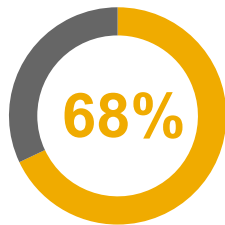


## EMPOWERED

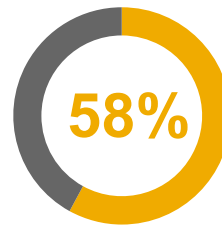
Rapid change in business and organizations means everyone needs to constantly be learning. More and more people are looking for options on their own because they aren't getting what they need from their employers.



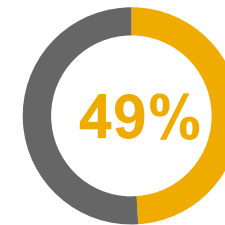
## Your employees expectations



of employees prefer to **learn at work**<sup>1</sup>



of employees prefer to **learn at their own pace**<sup>1</sup>



of employees prefer to **learn at the point of need**<sup>1</sup>

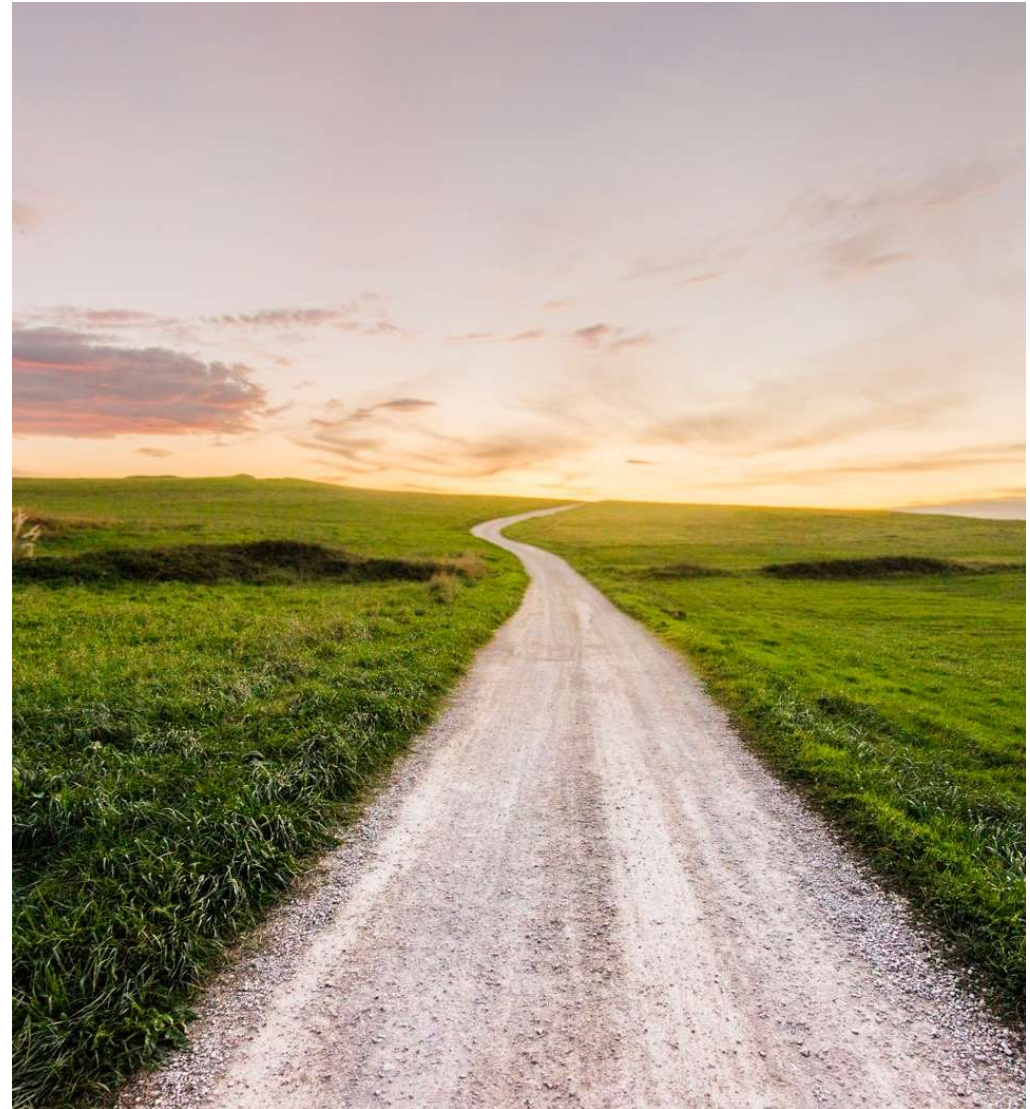
**Users prefer enablement “in the flow of work”<sup>2</sup>**

<sup>1</sup> LinkedIn Learning – [2018 Workplace Learning Report](#) – 2018

<sup>2</sup> [A New Paradigm For Corporate Training: Learning In The Flow of Work](#) - By Josh Bersin – June 2018



# **What is SAP Enable Now & SAP Companion**

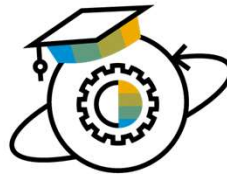


# SAP Enable Now



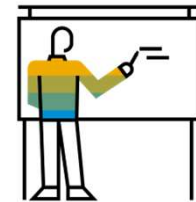
## Formal Training

Traditional instructor-led training and LMS-based online or e-learning courses.



## Informal Learning

Self-directed learning and sharing of knowledge



## User Assistance

Micro-knowledge and process guidance within the application

# SAP Enable Now – eLearning, Simulations, Documentation...

## Interactive e-Learning

**About this Course**  
Course Content and Learning Objective

This course comprises the following components:

- Contextual information on the Business Process.
- Documentation and Simulation of the process in the following modes:
  - Demo Mode
  - Practice Mode
  - Test Mode
- Embedded knowledge check (Quiz - not scored)

Click on the help agent at the top right of the page. Blue animated buttons will appear. Then click on the blue animated buttons for more information.

## Interactive Process Simulations

Click on the **Time Off** tile.  
(Note that the number of available vacation days is displayed)

Documentation

1.1.1. SuccessFactors: Learning - Internet Explorer

**My Learning (Play mode)**  
This is **My Learning** page. We can add a number of information blocks called **Recommendations** and so on.  
We can add information, tips, hints and more.

Step	Action
(1)	Click on  to minimise the tile.

- Click on the **Time Off** tile.  
(Note that the number of available vacation days is displayed)
- Click on **Show Account Details**
- Note the activity in Geoff's account. He has a vacation balance of 4 days with 0 days planned.
- Note that the vacation days earned up to the current month = 4 days
- Click on **Close**
- Click on **Other**
- to see other Time Off types.

Quiz

**Quiz "G/L Account Line Items"**

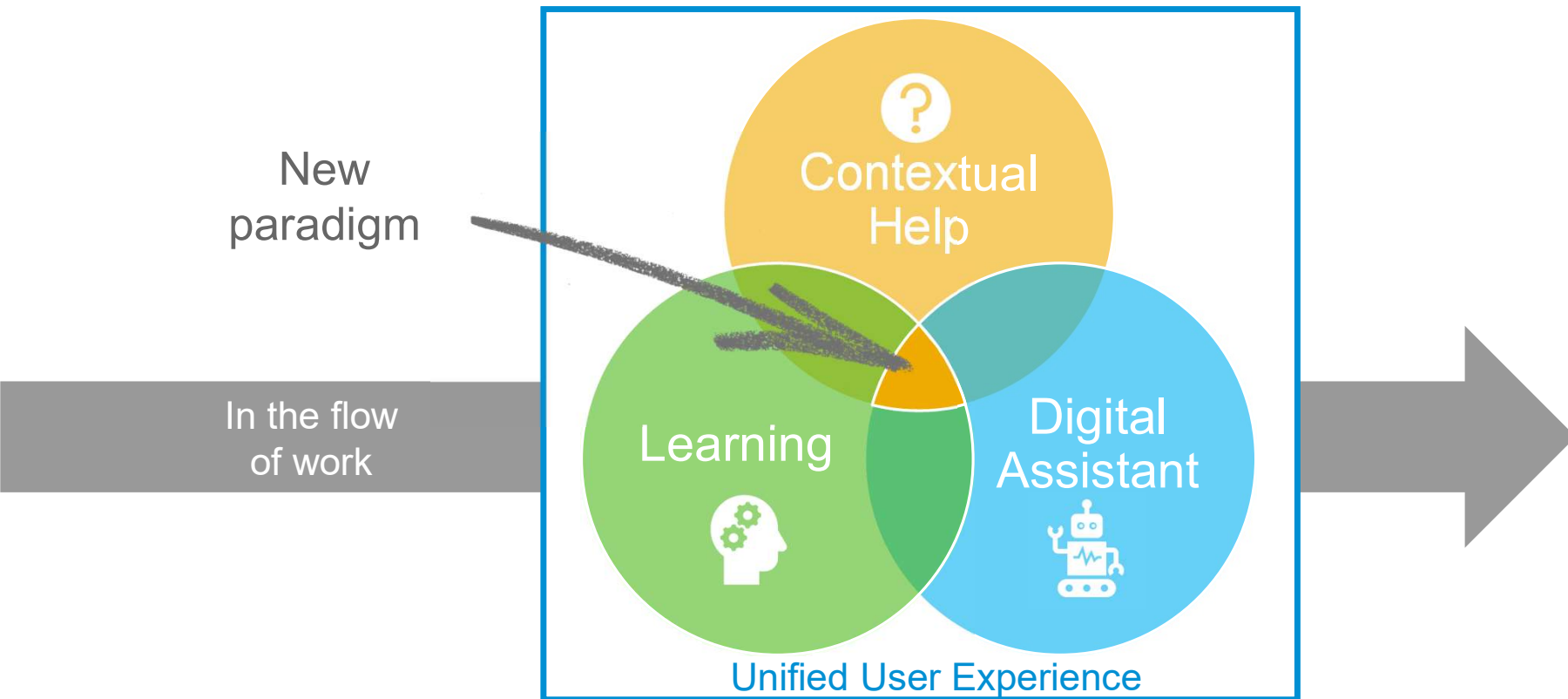
There are two ways to display the G/L Account Line Items.  
Please select the correct ways below.

- General Ledger view
- List view
- Journal Entry view
- Balance Sheet view

Available as  
on premise or  
cloud

## Intelligent user assistance “in the flow of work”

Get help, learn or use a digital assistant in the flow of work in a unified user experience



# SAP Companion

The screenshot displays the SAP Companion web interface. At the top, there is a browser window with the URL `https://my304874.s4hana.ondemand.com/ui?sap-language=EN&help-mixedLanguages=false#Shell-home`. The interface features a top navigation bar with the SAP logo, a 'Home' dropdown menu, a search bar, and utility icons for help, notifications, and user profile. A blue box highlights the 'Home' dropdown menu, and a blue line connects it to the 'Home' option in the right-hand sidebar. The sidebar, titled 'Help Topics', contains a search bar, 'SAP Community' and 'Quick Tour' buttons, a 'Find Help' section, and a list of menu items: 'Home' (highlighted), 'Entry Pa' (with a tooltip 'Navigate to all apps in your launchpad.'), 'Notifications', 'User Actions Menu', 'Personalize a Page', and 'Built-In Support'. The main content area is divided into sections: 'Trial Center' with 'Introduction' and 'Guided Tours' (35 items), 'Project Management' with 'Plan Customer Projects' (0), 'Event-Based Revenue Recognition Projects', and 'Review Customer Projects' (0), and 'Accounts Payable'.

# Free Embedded Learning – 78 Products supported

The screenshot displays the SAP Help Portal interface. At the top, the SAP logo and 'Help Portal (Documentation)' are visible, along with navigation links for 'Browse by Product', 'Learning Journeys', and 'What's New'. Below this, the 'Content Scenarios' section is highlighted, with a dropdown menu showing 'ZZ06'. The main content area is titled 'Get a Head Start with Embedded Learning' and includes a sub-heading 'Available user learning per SAP solution:' followed by a list of 14 SAP products.

**SAP Help Portal (Documentation)** | Browse by Product | Learning Journeys | What's New | Ex

**Content Scenarios** ZZ06 ▾

☆ Favorite | Download PDF | Share | Next →

Get a Head Start with Embedded Learning

Be productive from day one with built-in help, tutorials, and what's new information – live within many cloud solutions from SAP – to kick-start your learning when you need it.

Available user learning per SAP solution:

- [SAP Ariba](#)
- [SAP Business ByDesign](#)
- [SAP Business Technology Platform](#)
- [SAP Central Business Configuration](#)
- [SAP Cloud for Customer](#)
- [SAP Cloud ALM](#)
- [SAP Concur](#)
- [SAP Fieldglass](#)
- [Industry Cloud](#)
- [SAP Integrated Business Planning for Supply Chain](#)
- [SAP Landscape Management Cloud](#)
- [SAP Marketing Cloud](#)
- [SAP S/4HANA](#)
- [SAP S/4HANA - Apps](#)
- [SAP S/4HANA Finance](#)
- [SAP Signavio](#)
- [SAP Solution Manager](#)
- [SAP SuccessFactors](#)
- [Further Products](#)

# The super blend of enablement



**Holistic** combination of enablement approaches

**Efficient** support for users to get their job done

**Embedded** features and functions within the SAP user interface

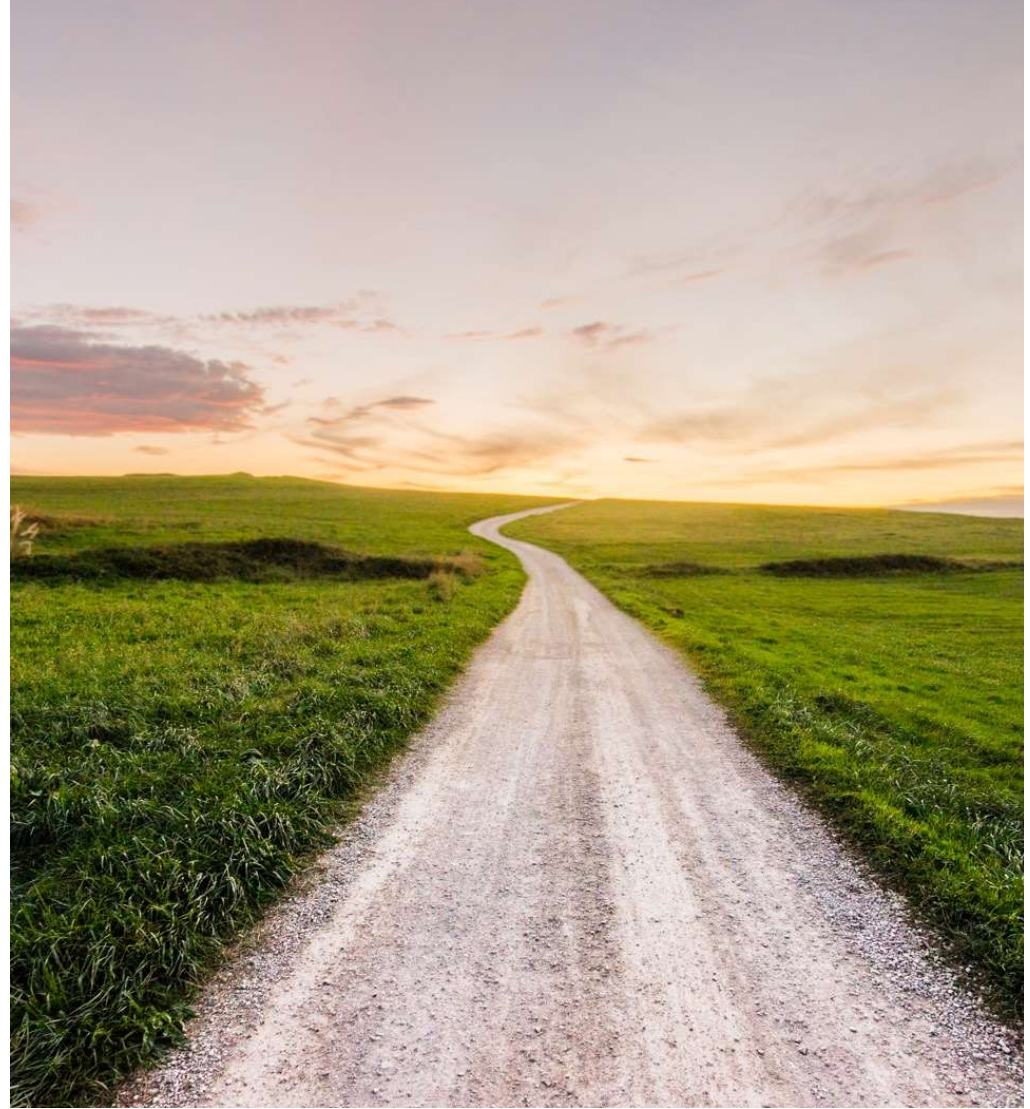
**Just-in-time** delivery of knowledge

**User-centric** information based on context

**Ready-to-use** enablement material of high quality by SAP

**Customizable** content to be adapted to your needs

**What else is Free?**



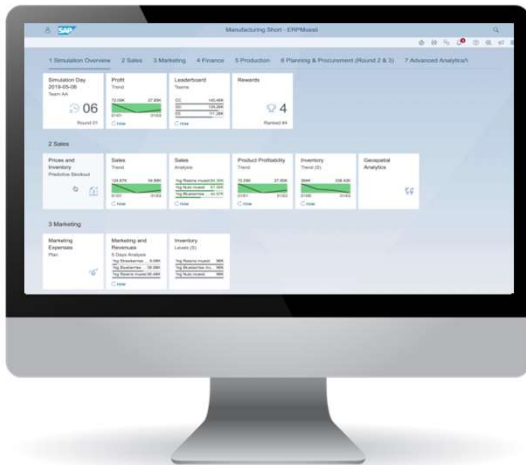


**Our mission is to  
create opportunity  
through learning and  
development for all.**

SAP pledge to equip 2 million people with digital skills by 2025 – and to **prepare our customers to meet the needs of tomorrow, today.**



# Free Trail – SAP Companion



## Free Trials

### ERP and Digital Core

- [SAP S/4HANA Cloud >](#)
- [SAP S/4HANA >](#)
- [SAP Business ByDesign >](#)
- [SAP RealSpend >](#)
- [SAP Financial Statement Insights >](#)

### Database and Data Management

- [SAP Adaptive Server Enterprise, developer edition >](#)
- [SAP Advantage Database Server >](#)
- [SAP Cloud Appliance Library >](#)
- [SAP Cloud Platform >](#)
- [SAP Data Hub >](#)
- [SAP Enterprise Architecture Designer >](#)
- [SAP Fiori Cloud >](#)
- [SAP HANA >](#)
- [SAP IQ >](#)
- [SAP Master Data Governance >](#)
- [SAP PowerDesigner >](#)
- [SAP SQL Anywhere, developer edition >](#)

### CRM and Customer Experience

- [SAP Consumer Sales Intelligence >](#)
- [SAP Event Ticketing >](#)
- [SAP Marketing Cloud >](#)

### Digital Supply Chain

- [SAP Innovation Management >](#)
- [SAP Intelligent Product Design >](#)
- [SAP Rural Sourcing Management >](#)

### Analytics

- [SAP Analytics Cloud >](#)
- [SAP BusinessObjects Business Intelligence, Edge edition >](#)
- [SAP Crystal Reports >](#)
- [SAP Crystal Server >](#)
- [SAP Sports One >](#)
- [SAP Data Warehouse Cloud >](#)

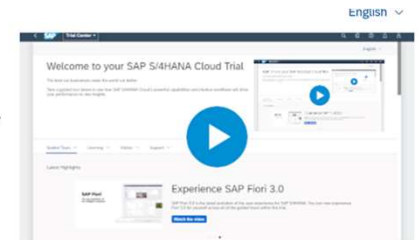
<https://www.sap.com/products/free-trials.html>

# S/4HANA Cloud Trial – Guided Tours

## Welcome to your SAP S/4HANA Cloud Trial

The best-run businesses make the world run better.

Take a guided tour below to see how SAP S/4HANA Cloud's powerful capabilities and intuitive workflows will drive your performance to new heights.



Guided Tours ▾ Learning ▾ Videos ▾ Support ▾

### Getting Started Guides

Getting Started Guides are generic demos that explain some of the basic functions and navigation concepts of SAP S/4HANA Cloud. You can find additional guides in the Learning Center or browse the full set of learning material in the SAP Help Portal.



Working with the Launchpad



Working with Apps



Configuration with Manage Your Solution



Go to SAP Help Portal



Go to Learning Center

<https://www.sap.com/products/s4hana-erp.html>



Our goal:

**Deliver value to every learner through a wide range of resources to fit all learning needs and skill levels.**

## Self-paced learning

Curated selection of self-study learning offerings to help people to upskill, reskill, and prepare for skill validation in key SAP innovation areas.

Examples include:

- [SAP Learning Journeys on the SAP Learning site](#)
- [SAP Community](#)
- [Enterprise Massive Open Online Courses \(MOOCs\)](#)

## Premium Learning

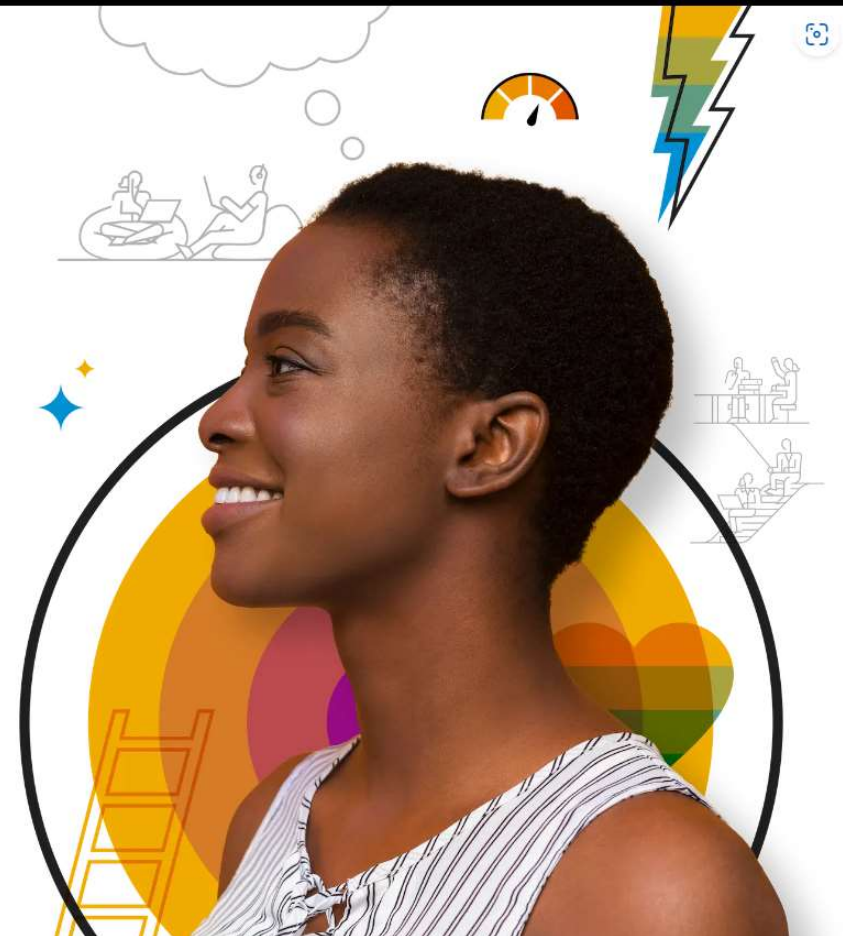
A guided experience for managed workforce transformation with reliable outcomes, designed for various roles and learning styles and covering the full SAP portfolio. Examples include:

- [SAP Learning Hub](#)
- [SAP Learning Class](#)
- [SAP Learning Services](#)

# Your one destination for learning SAP

Explore our learning journeys and product pages and get the knowledge you need to succeed in your career. Prepare to earn an SAP Certification and become a trusted SAP expert!

[Explore our learning journeys](#)

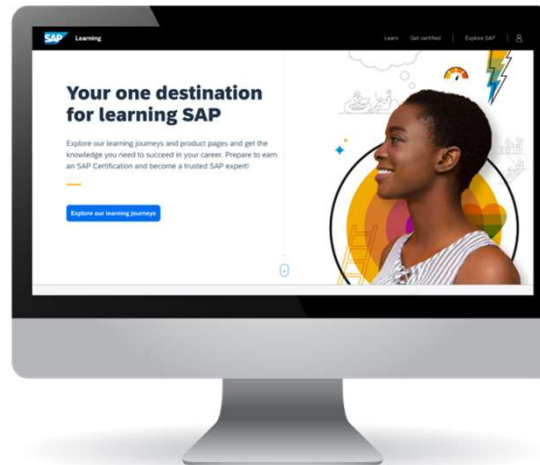


# Access self-paced learning and development for all

## SAP Learning site

Upskill, reskill, and prepare for skill validation opportunities in one place with future-focused content in a new learning experience.

- **Build in-demand skills** for free in key cloud and technology solution areas with self-paced learning resources
- **Access tailored learning journeys** for roles such as: developer and citizen developer, consultant, data analyst, business user, etc.
- **Achieve a record achievement** for beginner level skills
- **Prepare for SAP Certification** for key innovation areas



“Learning ABAP programming has given me a thorough understanding of the processes, data and software involved. That helps immensely. You can implement new or adapt existing processes better.”

**Michael Keller**  
SAP Consultant, Developer and Trainer

**50+**

Role-based learning journeys

**550+**

Hours of self-paced learning content

✔ You have been logged in automatically using SAP Cloud Identity. ✕

openSAP

Channels ▾

Courses

Microlearning

Podcasts

News

Dashboard

Profile

Certificates

Settings

### My current courses



#### SAP Enable Now Framework

Robyn Brown, Dieter Voll, Johnson ...

Self-paced

English

German, French, Spanish

Show course details >

Enter course ▶

Reactivate for Record of Achievement 🔒

Mark as completed ✔



#### Find Your Path to SAP S/4HANA

Featuring experts from Product ...

Self-paced

English

Show course details >

Enter course ▶

Reactivate

Mark as completed

# OpenSAP

<https://open.sap.com/dashboard>

# Open online courses by SAP

With complementary microlearning and podcasts!

Browse all courses

Play the video

Read more  
open.sap.com

Helpdesk

Visit SAP's World-class site  
[learning.sap.com](https://learning.sap.com)



2023-04-04

Enroll Now! SAP Product Lifecycle Management

2023-03-07

Enroll Now! SAP Focused Run and New SAP Fieldglass Track

2023-02-21

Enroll Now! Your HR Journey to the Cloud



SAP Learning Journey  
**ABAP Programming - Upskilling from SAP ERP to SAP S/4HANA**



Available for  
**Developer**

SAP Learning Journey  
**ABAP Programming for SAP HANA - Certification Path**



Available for  
**Developer**

SAP Learning Journey  
**ABAP Programming with SAP NetWeaver: Creating Forms**



Available for  
**Developer**

SAP Learning Journey  
**Application Development for SAP HANA - Certification Path**



Available for  
**Developer**

## Learning Journeys

<https://help.sap.com/learning-journeys>

# The evolving reality of enablement in the cloud



- **Continuous learning**  
Innovation drives the cycle of learning.

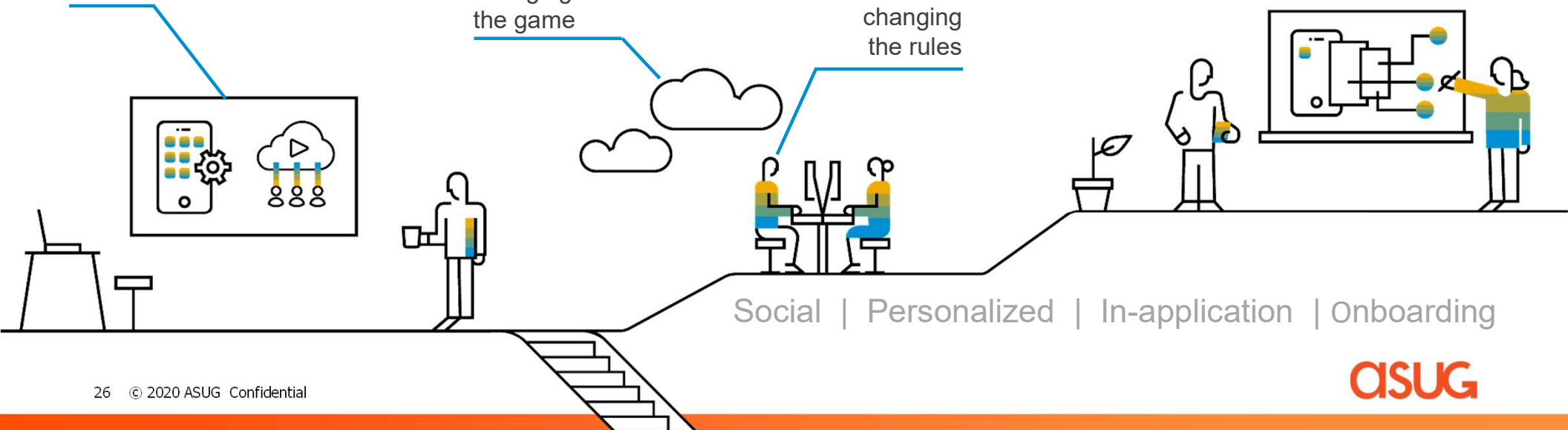
- **Changing roles**  
IT, LoBs, and business users are now driving adoption.

- **Choice and flexibility**  
Users have high expectations for extended learning offerings and delivery options.

Quarterly innovation cycles

Cloud changing the game

Users changing the rules



# Upcoming Events:



Be the future of efficiency, agility, and resiliency.

June 20-22, 2023 | Woodlands, TX

[Scan QR Code To Register >](#)



ASUG

Speaking with Elizabeth Flood from Exxon, Dirk Manuel former Exxon and Filipe Rodriguez Stryker

## SAP Sapphire & ASUG Annual Conference Orlando


May 16-17, 2023 | Orange County Convention Center

[Register now](#) [Already registered to SAP Sapphire? Login](#)

### ROI Booster: Adoption Best Practices

Tuesday, May 16, 2023 | 02:00 p.m. - 02:40 p.m.

[Details](#) [Speakers](#)

Jesse Bernal 

SAP  
Sr Solutions Advisor, SAP Enable ...

Richard van d... 

Verizon Communications Inc.  
Sr Mgr, Corporate Systems Group

Join us for dinner!

SAP and ISG are hosting a dinner with a focus  
on customer adoption of SAP

May 16, 2023

7:30 p.m. ET

At Four Flamingos



### Come join us for an Adoption Experience...

Brought to you by SAP Preferred Success and SAP Training and Adoption, we're looking forward to a night to unwind from the first day of Sapphire, share a great meal, and talk about adoption.

Expectations for the event:

- Hosts Chad Crook, SAP Chief Innovation Officer, and ISG president, Randy Geoghagan, will look forward to hearing directly from customers
- SAP experts to share customer stories and best practices
- Great food at Four Flamingos at 1 Grand Cypress Boulevard, Orlando, FL, 32836



RSVP to [Claudia.Faerber@sap.com](mailto:Claudia.Faerber@sap.com) to reserve your seat! (seats are limited)



THE BEST RUN



# Thank you.

Contact information:

**Jesse Bernal**  
Jesse.Bernal@sap.com

