



RISE with SAP S/4HANA with Hybrid Cloud

Bharvi Parikh

bharvi@us.ibm.com

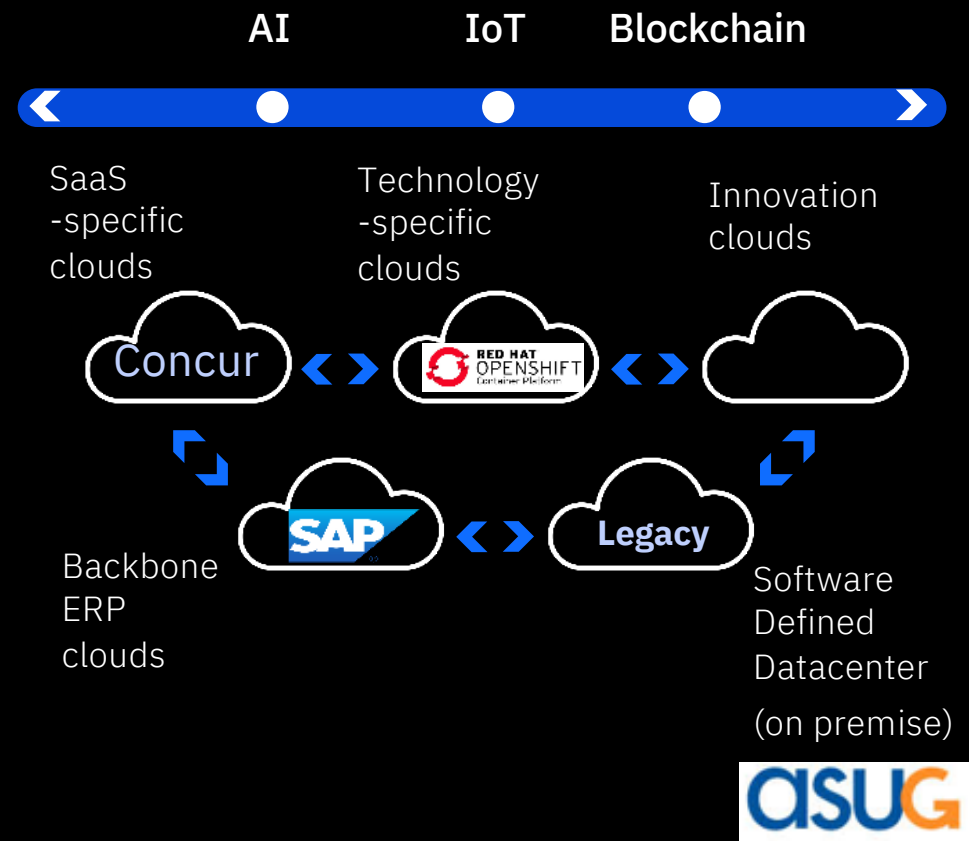
IBM

Agenda

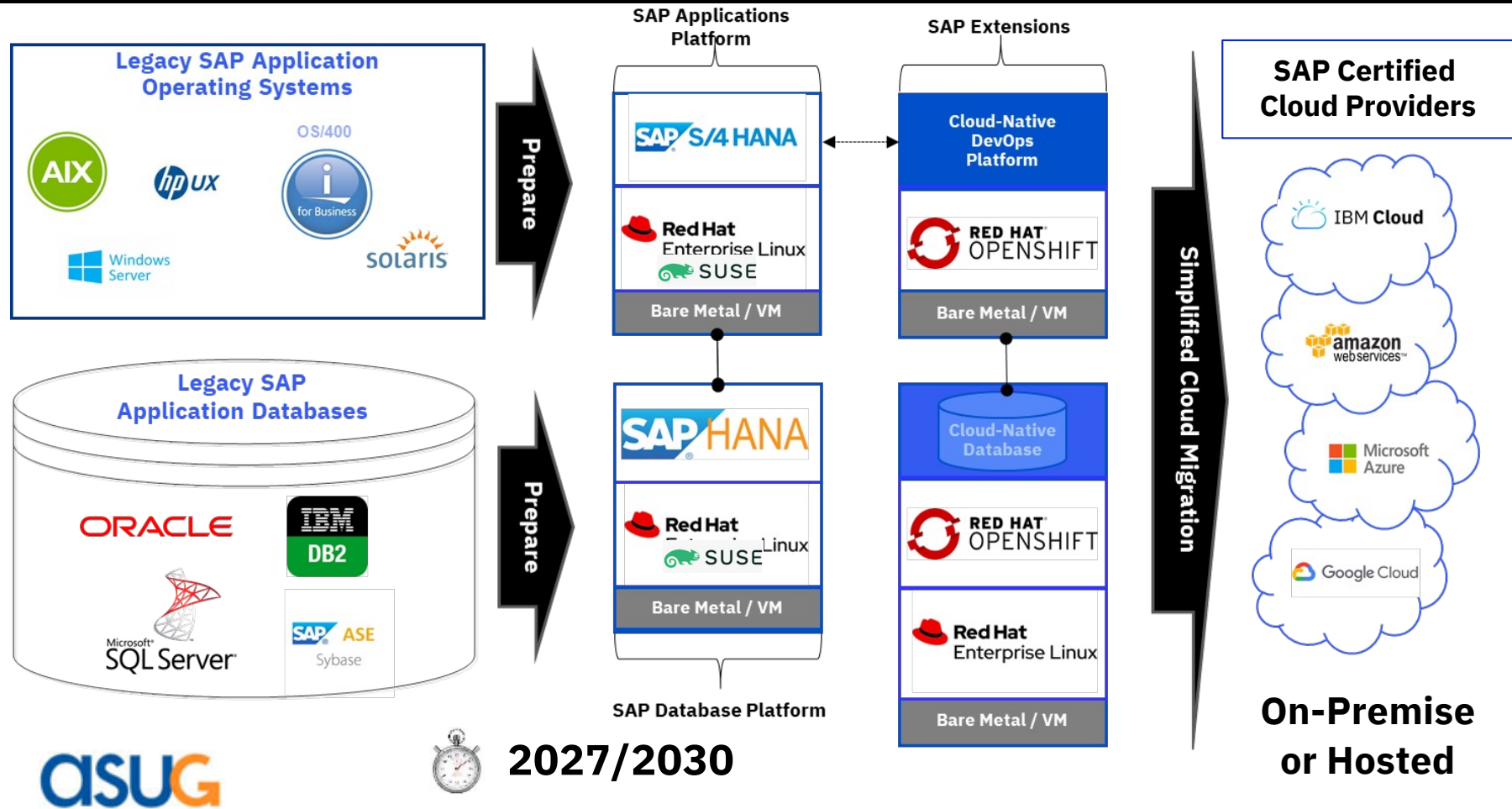
- Hybrid Cloud, The new normal
- RISE Choices
- SAP Support

The new normal is hybrid, multcloud, and open

The focus enterprise application use cases for this session will be SAP, as one of the world's largest packaged application providers

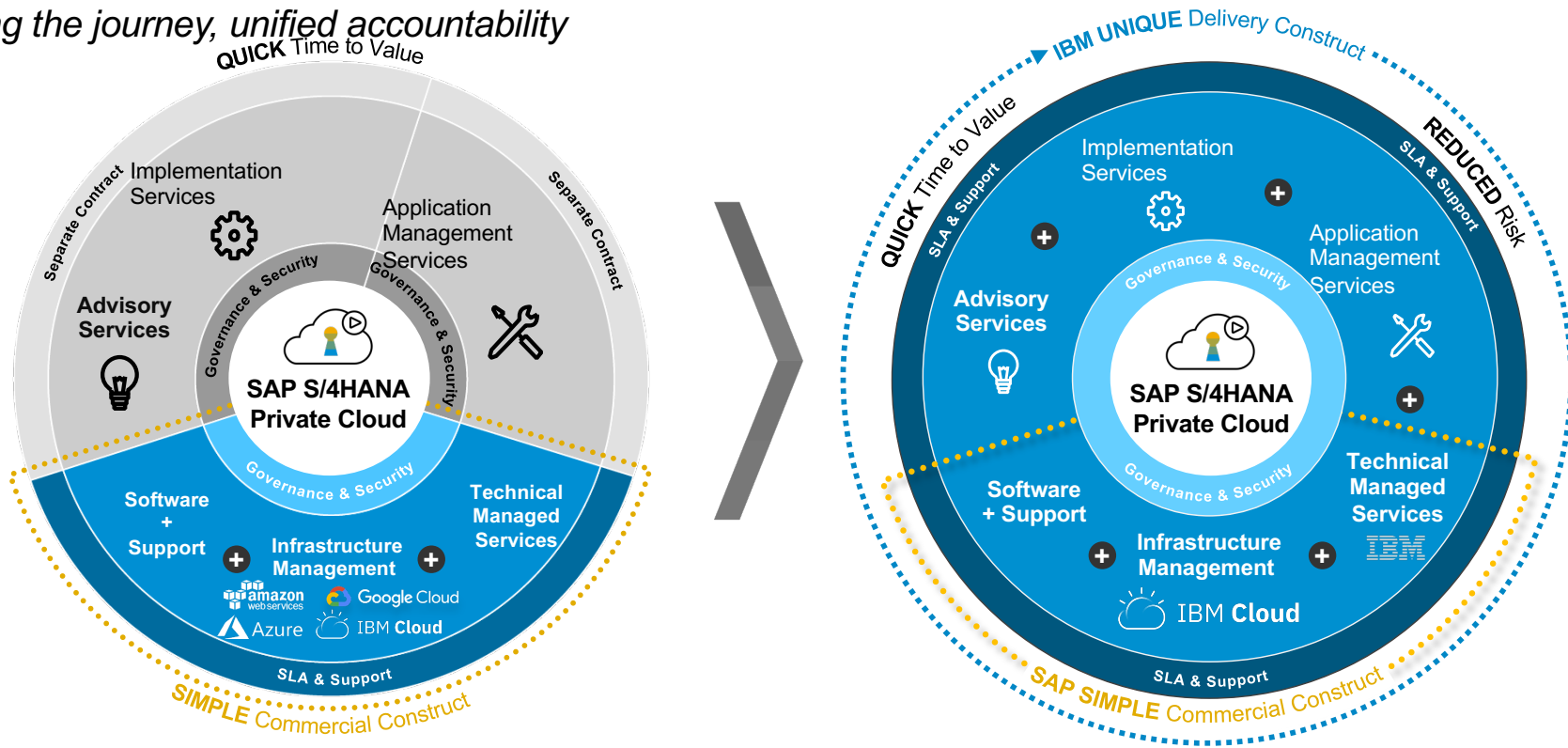


Hybrid Cloud: Choose Your Target SAP S/4HANA Datacenter and How You Get There, RISE with SAP provides three options Public ,Private and on Premise

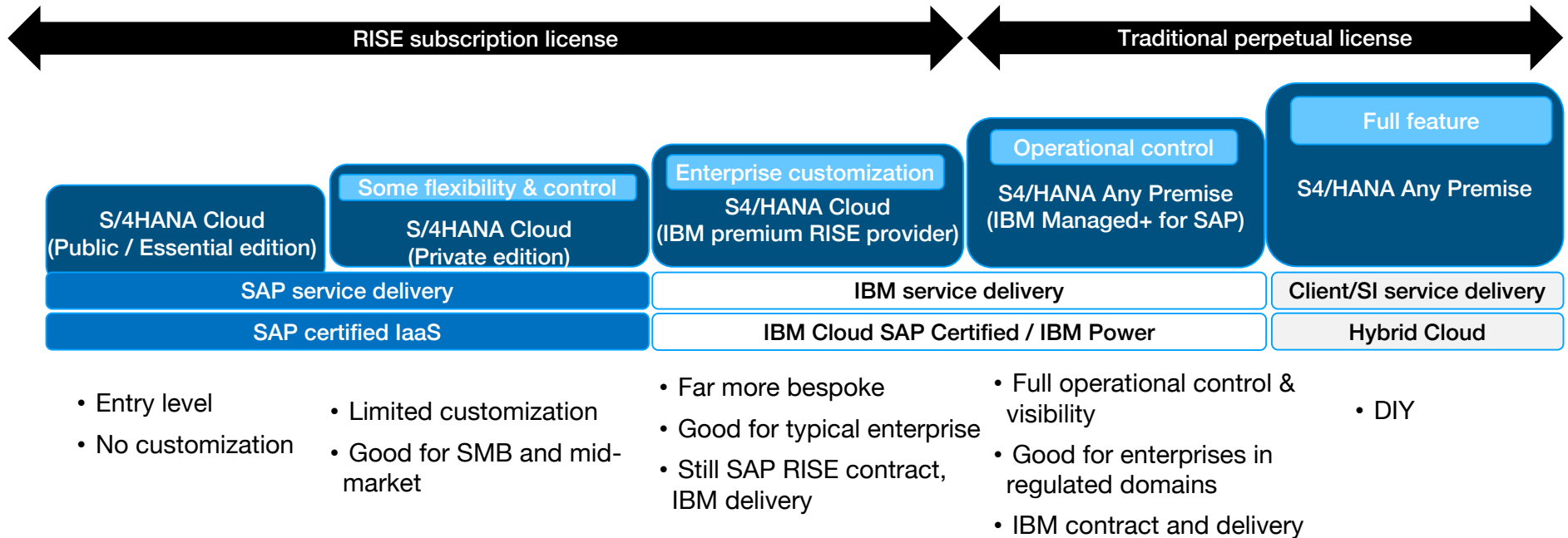


BREAKTHROUGH with IBM for RISE with SAP, premium supplier option

Simplifying the journey, unified accountability



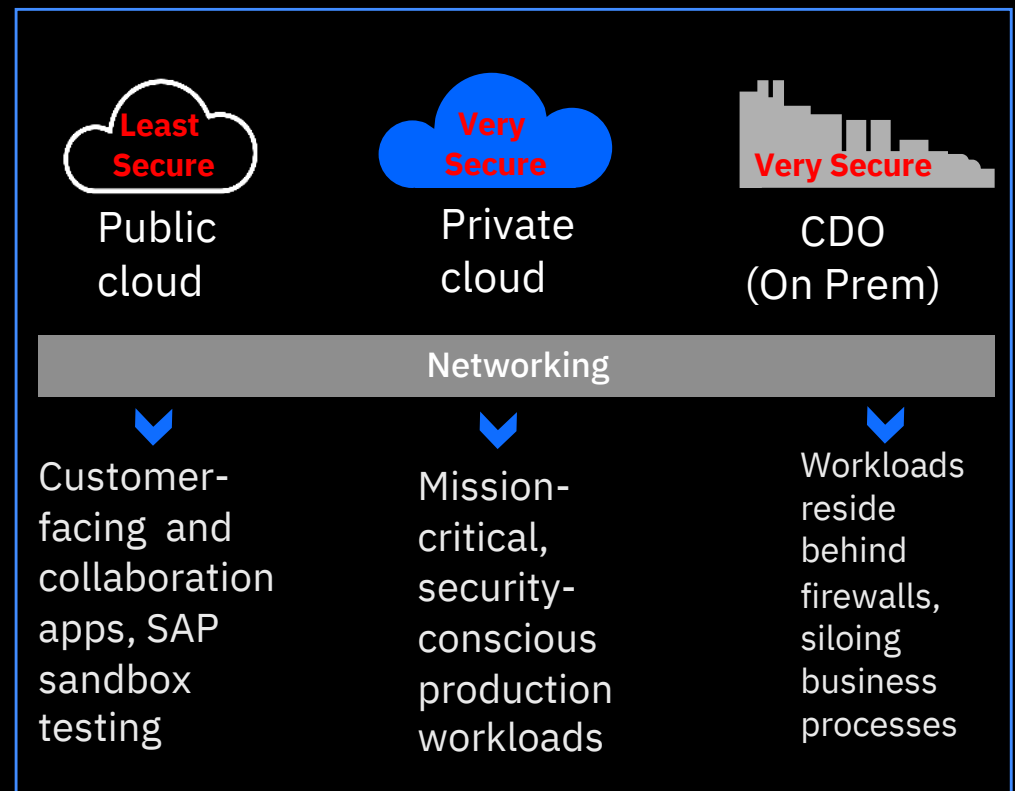
SAP S/4HANA Deployment Options



Hybrid Cloud: Choose your Cloud Privacy Model with RISE

A Private Cloud model is typically chosen for SAP production workloads.

A recent ASUG study found that only 8% of SAP customers would consider deploying their production workloads to a Public Cloud. Private Cloud solutions run within a Public Cloud but incorporate physical isolation for each client for increased security and disruption from “noisy neighbors”.



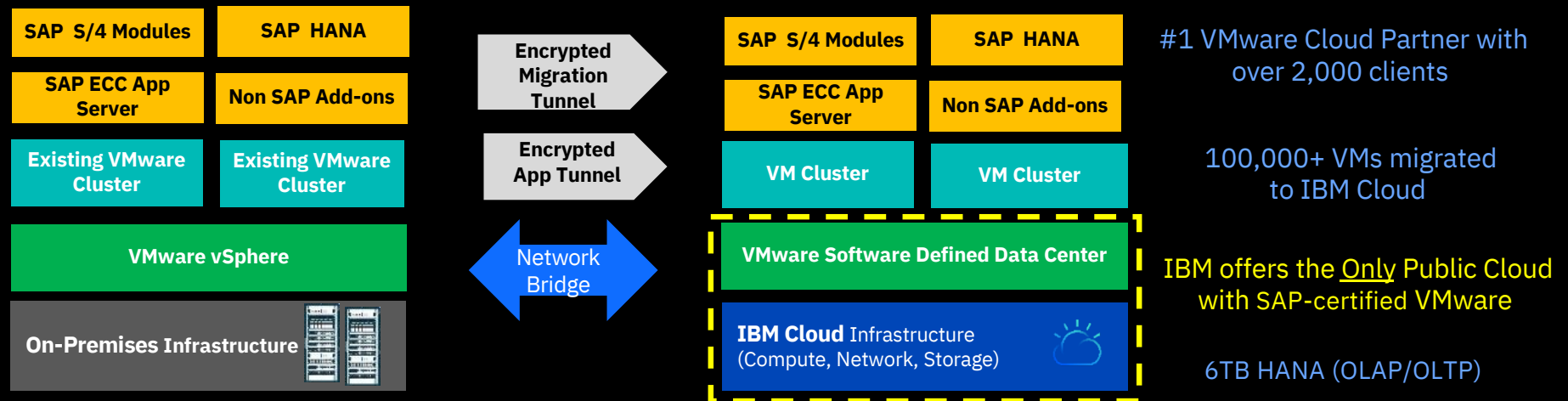
Your Cloud Virtualization Model

Client Triggers

- Desired to move SAP workloads to the Cloud
- SAP ECC to S4/HANA migration mandate
- Expanded Capacity Needs
- Disaster Recovery on the Cloud
- Divestitures/Carve outs

Client Values

- Frictionless migration, retain investment, no refactoring
- Reduced cost, greater flexibility, higher resiliency
- Minimal business disruption (keep your IP addresses)
- On-Demand SAP Certified Infrastructure
- Preserve portability and choice



IBM Cloud for SAP

Intel x86 (IBM Cloud)

Hundreds of large-scale SAP Clients

More than **10K** hosts

More than **1PB** of memory

More than **20PB** of storage

Support for **Intel Optane*** persistent memory for **fast** HANA shutdown and startup

Largest **HANA Database** system - scale up: **12TB**, scale out: **60TB**

Largest **Virtualized HANA Database** system
– scale up: **6TB**

IBM Power Systems

4500+ SAP HANA clients (**On-premise & Cloud**)

Ranked # 1 for last 14 years in being the most reliable server

Support for **persistent memory** for **fast** HANA shutdown and startup (**On-premise**)

Largest **Virtualized HANA Database** System
– scale up: **40TB (22.5 TB in Cloud)**

Scale workload more granular .1 CPU and 1GB memory



RISE Changes This CDO for on Premise, Cloud based on choice BOM

Reference: SAP Certified Cloud Provider Options

SAP Certified HANA Directory – SAP Provided Online Resource

The screenshot shows the SAP Certified and Supported SAP HANA Hardware Directory website. The search results are filtered for IBM Cloud IaaS platforms. The search criteria include Vendor (IBM Cloud), CPU Architecture, RAM, Clustering, Application Type, Operating System, Certification Date, and Certification Scenario. The search results table lists 8 IBM Cloud instance types with their respective RAM, Clustering, and Application Type.

Vendor	Instance Type	RAM	Clustering	Application Type
IBM Cloud	Bl.S1.H1000	1 TiB		OLAP/OLTP ✓
IBM Cloud	Bl.S1.H2000	2 TiB		OLTP ✓
IBM Cloud	Bl.S1.H512	512 GiB		OLAP/OLTP ✓
IBM Cloud	Bl.S2.H4100	1 TiB		OLAP/OLTP ✓
IBM Cloud	Bl.S2.H4101	1 TiB	Yes	OLAP/OLTP ✓
IBM Cloud	Bl.S2.H4200	2 TiB		OLAP/OLTP ✓
IBM Cloud	Bl.S2.H4201	2 TiB	Yes	OLAP/OLTP ✓
IBM Cloud	Bl.S2.H4400	4 TiB		OLTP ✓
IBM Cloud	Bl.S2.H4401	4 TiB		OLTP ✓

- Most factual and reliable golden reference of SAP Certified IaaS
- Compare and contrast with other SAP IaaS Cloud Providers (Azure, AWS, GCP, etc)
- Filter by CPU, Memory, Clustering, Operating System (RHEL/SLES), OLTP/OLAP, etc

<https://www.sap.com/dmc/exp/2014-09-02-hana-hardware/enEN/iaas.html#categories=IBM%20Cloud>

SAP CERTIFIED AND SUPPORTED SAP HANA® HARDWARE DIRECTORY

Certified Appliances
 Certified Enterprise Storage
 Certified HCI Solutions
 Certified IaaS Platforms
 Supported Intel® Systems
 Supported Power® Systems

Filter by: Deployment ▾ Vendors ▾ CPU Architecture ▾ Memory Size ▾ More ▾

Filtered by "IBM Power10", "IBM POWER9" and "Supported Power® Systems" [clear](#)

8 Solutions

sorted by Latest Certification

[Export as PDF](#)

as of November 16, 2022

Solution	Type	Vendor	CPU Architecture	Cores	TDI	Certified Solution
S922, H922	Power® System	International Business Machines Corporation	IBM POWER9	22	✓	
S924, H924, L922	Power® System	International Business Machines Corporation	IBM POWER9	24	✓	
E950	Power® System	International Business Machines Corporation	IBM POWER9	48	✓	
E980	Power® System	International Business Machines Corporation	IBM POWER9	48/192*	✓	
E1080	Power® System	International Business Machines Corporation	IBM Power10	240*	✓	
E1050	Power® System	International Business Machines Corporation	IBM Power10	72*	✓	
S1024, L1024	Power® System	International Business Machines Corporation	IBM Power10	36*	✓	
S1022, L1022, S1022s**	Power® System	International Business Machines Corporation	IBM Power10	36*	✓	

Source:

[Certified and Supported SAP HANA® Hardware Directory](#)

*SAP HANA only supports SUSE and Red Hat – RHEL now preferred for New Clients with RISE **

RHEL RELIABILITY in the market:

- 90% of the Fortune 500 trust Red Hat
- Approx 70% Paid Linux market share
- Development Powerhouse
#2 Kubernetes & Linux contributor
- Completeness of portfolio
 - Virtualization
 - Management & Automation
 - Application Integration
 - OpenShift Container Platform

Realize More VALUE while Reducing Costs:

- RHEL for SAP Solutions delivers more capabilities
- Extended Update Support
 - Focuses on SAP applications lifecycle, providing a stable foundation with support for RHEL certain minor releases up to 4 years
- State-of-the-art management and automation into your SAP landscape

RHEL SUPPORT:

- Pre-sales & Post-sales
- Red Hat SAP Technical Account Managers
- Standard SLA for non-prod / Premium for prod
- Red Hat Global support services engaged via SAP global backbone
- Specialty Based Routing (SBR) model ensures SMEs work the issue
- Application Compatibility Guide

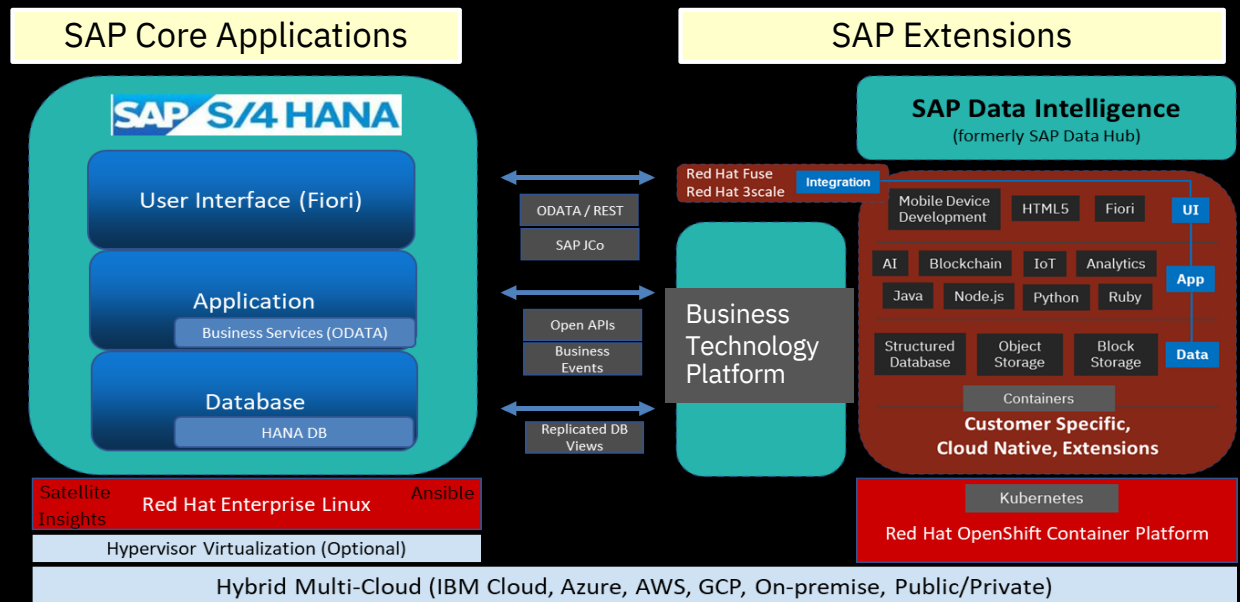
*<https://news.sap.com/2023/02/red-hat-and-sap-deepen-partnership/>



Application Customization & Extension Model

*SAP Side-by-Side Extensibility with BTP and Red Hat OpenShift Provides on-premise and Cloud Independence
BTP starter credits are included with RISE*

- The future of extending SAP is to minimize modification of the Digital Core using Cloud-native platforms, such as SAP Cloud Platform and OpenShift
- Modification of Core application source code breaks the ability to perform functional upgrades of SAP cost effectively
- Key efficiency objective: *Develop once, deploy anywhere.*



- OpenShift is an on-prem/Cloud, application-independent, Cloud-native development and runtime environment used by half of the Fortune 500
- Red Hat OpenShift ensures SAP extensions/customizations can be run on-premise or on any major Cloud provider, and are reliable and scalable

Note: BTP does not support on-premise deployments today. OpenShift the only option for on-prem cloud-native extensions.

SAP HANA on IBM Power

Ready to support your journey to hybrid cloud

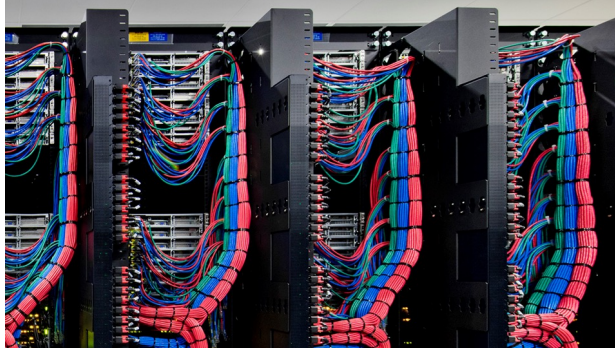
On-premises

IBM Power servers



Public cloud

IBM Power Virtual Server



IaaS

RISE with SAP, premium supplier option on IBM Power



IBM Power

Visit us: <https://www.ibm.com/it-infrastructure/power>

Flexibility for the Digital Enterprise

- When the COVID-19 pandemic forced **Ecogas** to suspend in-person services for its 1.4 million natural gas customers in Argentina, the company had to act fast to prepare for a surge in demand for its digital channels.
- By moving to SAP HANA 2.0 on IBM Power10, Ecogas can support its customers with seamless digital services through the pandemic and beyond. The new solution has allowed the organization to reduce IT operational costs by 20% while boosting compute performance by 35%—empowering it to accommodate a massive increase in demand for digital services.
- “Moving to SAP HANA 2.0 on IBM Power10 played a key role in allowing Ecogas to maintain high service levels throughout the pandemic. In fact, around 80% of our customers now use digital channels as their primary touchpoint—all enabled by our IBM and SAP solutions.”

SAP HANA CLIENT SUCCESS



Sustainability

- **Bosch Group**, a leading global engineering, technology, and services company based in Germany, has committed to and achieved an ambitious target: to become the world’s first fully carbon-neutral industrial enterprise by 2020.
- Bosch is transitioning to IBM Power10 servers, with up to 75% performance gains while cutting energy consumption by 20%, supporting the company’s climate ambitions
- “IBM Power10 enables us to run more workload and deliver results more quickly to our business users. Early experience shows that for jobs with a high degree of parallelization, the move to Power10 is an essential component of the Bosch digital transformation and sustainable operations journey.”



Real Time Analytics

- Cutting food waste is a key ingredient in **Coop Group**’s recipe for a more sustainable future, and to help realize this vision the organization is focusing on optimal product assortment and quantities across all stores.
- Coop Group is using high-performance IBM® Power10 servers with SUSE Linux® Enterprise Server for SAP Applications to accelerate SAP S/4HANA® reports by up to 30%—empowering the company to run the business more efficiently with fast, data-driven decisions.
- “SAP S/4HANA running on IBM Power10 with SUSE Linux Enterprise Server for SAP Applications has accelerated some tasks by 30%—a testament to the improved performance of IBM Power10.”



Performance

- To address momentous market changes, automaker **Audi AG** is focusing on electrification and hybridization but also on digitization, including cutting-edge areas such as connected cars and autonomous driving.
- To support this, Audi saw the need to increase innovation, speed and agility. The implementation of IBM Power10 servers provided 100X faster loading for advanced analytics with 66% fewer servers
- “The unmatched scalability and flexibility of IBM Power Systems is a key benefit for us. We can dynamically adjust our resource allocations and prioritizations on the hypervisor level to ensure our applications can always meet our business needs. From my experience, IBM solutions deliver superior business agility, ensuring we have the freedom and capability to innovate, and lead the industry”

Thank you for your time

Follow us on  at @ASUG365

bharvi@us.ibm.com

ASUG

SAP Extends Support

WALLDORF — [SAP SE](#) (NYSE: SAP) today announced a maintenance commitment for SAP S/4HANA until the end of 2040. At the same time, SAP will provide mainstream maintenance for core applications of SAP Business Suite 7 software* until the end of 2027 followed by optional extended maintenance until the end of 2030.

Oracle 19c March 2023 std and March 2026 extended.

DB2 support ends December/2025

Will you need to move to HANA DB to go beyond March 2026

Still Best to plan migration by end of 2027

“Look, this morning, I got also the question in the press conference, what about the end of maintenance for our ECC and older ERP version? And do we go to expand and extend this timeline again? No, we are not going to extend that, because we're actually giving customers already a lot of choice to move with us to S/4HANA. We still have on-prem and guaranteed **until 2040**. But we, of course, see now in the meantime, big success with our move to the cloud with RISE.”

Christian Klein – CEO, SAP SE (NYSE:SAP)

Q4 2022 Earnings Conference Call January 26, 2023

Source: transcript at <https://seekingalpha.com/article/4572588-sap-se-sap-q4-2022-earnings-call-transcript>

Press Release.

<https://news.sap.com/2020/02/sap-s4hana-maintenance-2040-clarity-choice-sap-business-suite-7/>

