



# Business Technology Platform

## Accelerate Innovation and Unlock Business Potential

Thomas Alexander  
June 9 2022

CUSTOMER

THE BEST RUN 

**Why a clean core? - benefits**

# What is it?

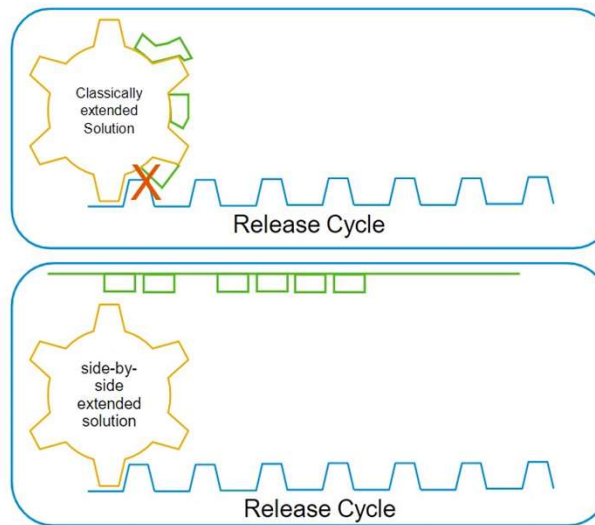
## A new extensibility framework for the Intelligent Enterprise

In the past SAP allowed several customers to create **custom codes/extensions** in the ECCs to cover customer specific requirements

Custom codes has to main side effects: it will make **the innovation adoption complex and slower** (as consequence of limited compatibility with new software releases) and it **increase the TCO** (as consequence to maintain and update the customization)

In a context where **agility and speed** is key to support the business evolution, this is no longer tolerable

- SAP has developed a new **extensibility framework** that allows to cover the customer specific needs without compromising the adoption of the innovations coming from the standard evolutions



highly extended solutions

lead to

high costs and effort for upgrades

results in

long upgrade cycles

mean

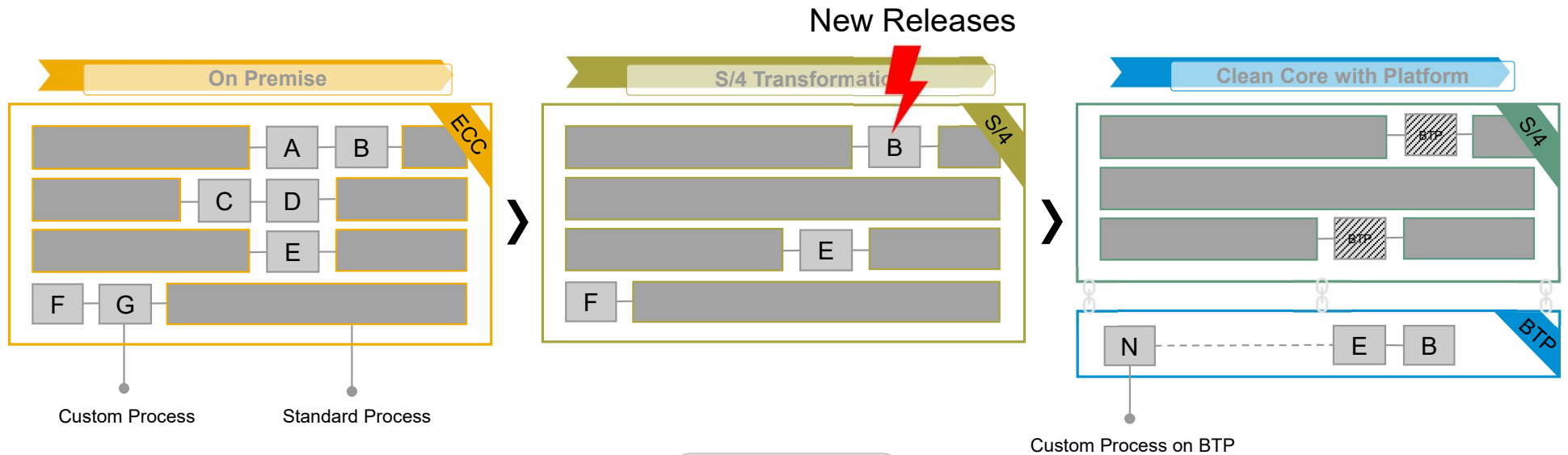
waiting for innovations delivered in solution

Solution:

externalizing modifying extensions

- The **key element** of the new extensibility framework is the **Business Technology Platform (BTP)** that allows a side-by-side development and keep the “Core Clean”

# What it means? - to have a “Clean Core”



Value Drivers

**Speed and Innovation**

Be able to absorb innovation delivered by SAP at a faster rate and react fast on changing business requirements

**TCO**

Reduce TCO by making upgrades eventually non-events from a custom code point of view

**Cloud Ready**

If you run your SAP S/4HANA system on premise – already lay the foundation today to move to the cloud from a custom extension perspective

**What is the new Extensibility Framework?**

# SAP S/4HANA extensibility

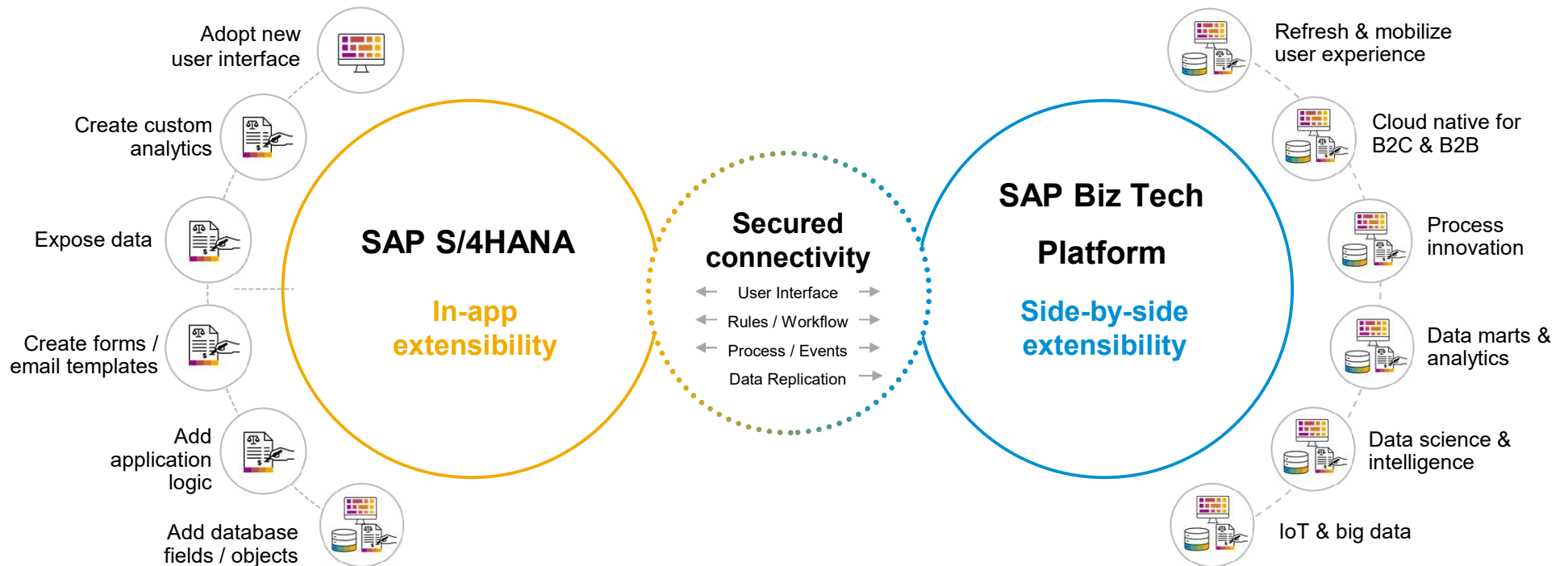
User Interface Layer



Application Layer

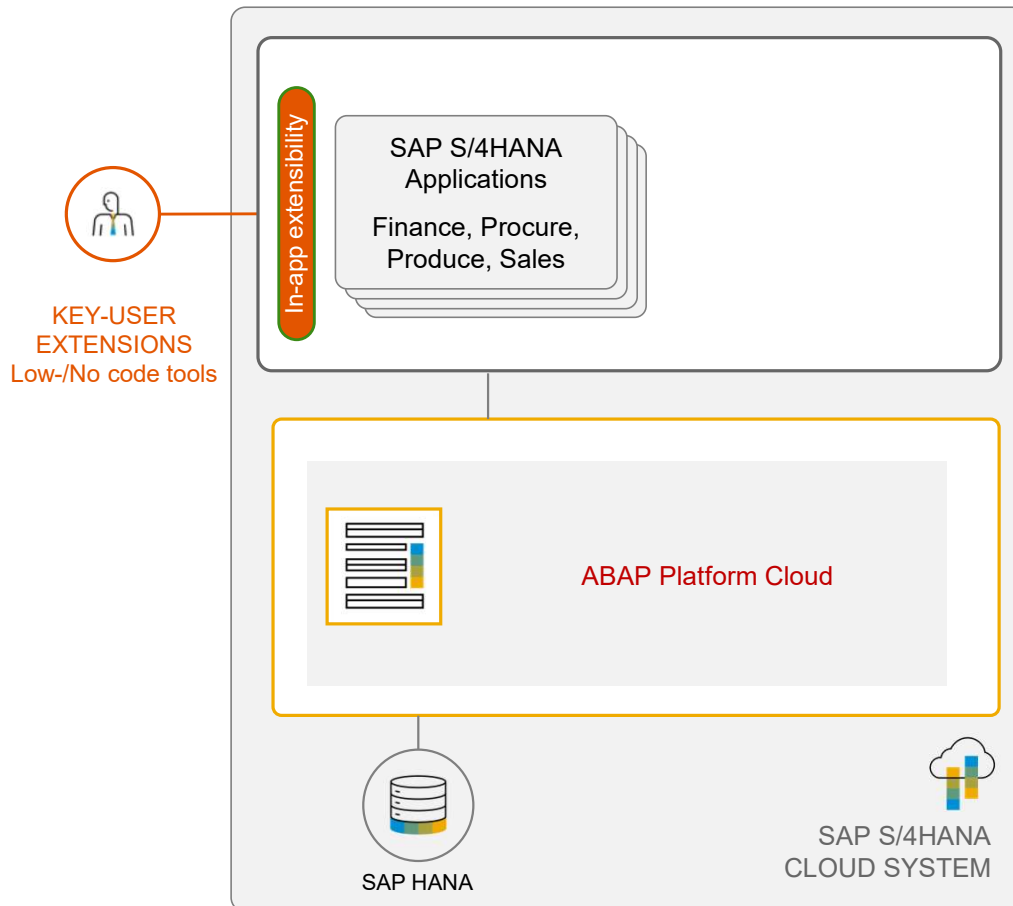


Database Layer



E2E Security / E2E Lifecycle Management

# SAP S/4HANA Cloud extensibility - Key user extensibility



## EXAMPLE: FIELD EXTENSIBILITY

Create and maintain custom fields that can be used to enhance applications and APIs

Choose different data types (e.g., Number, Text)

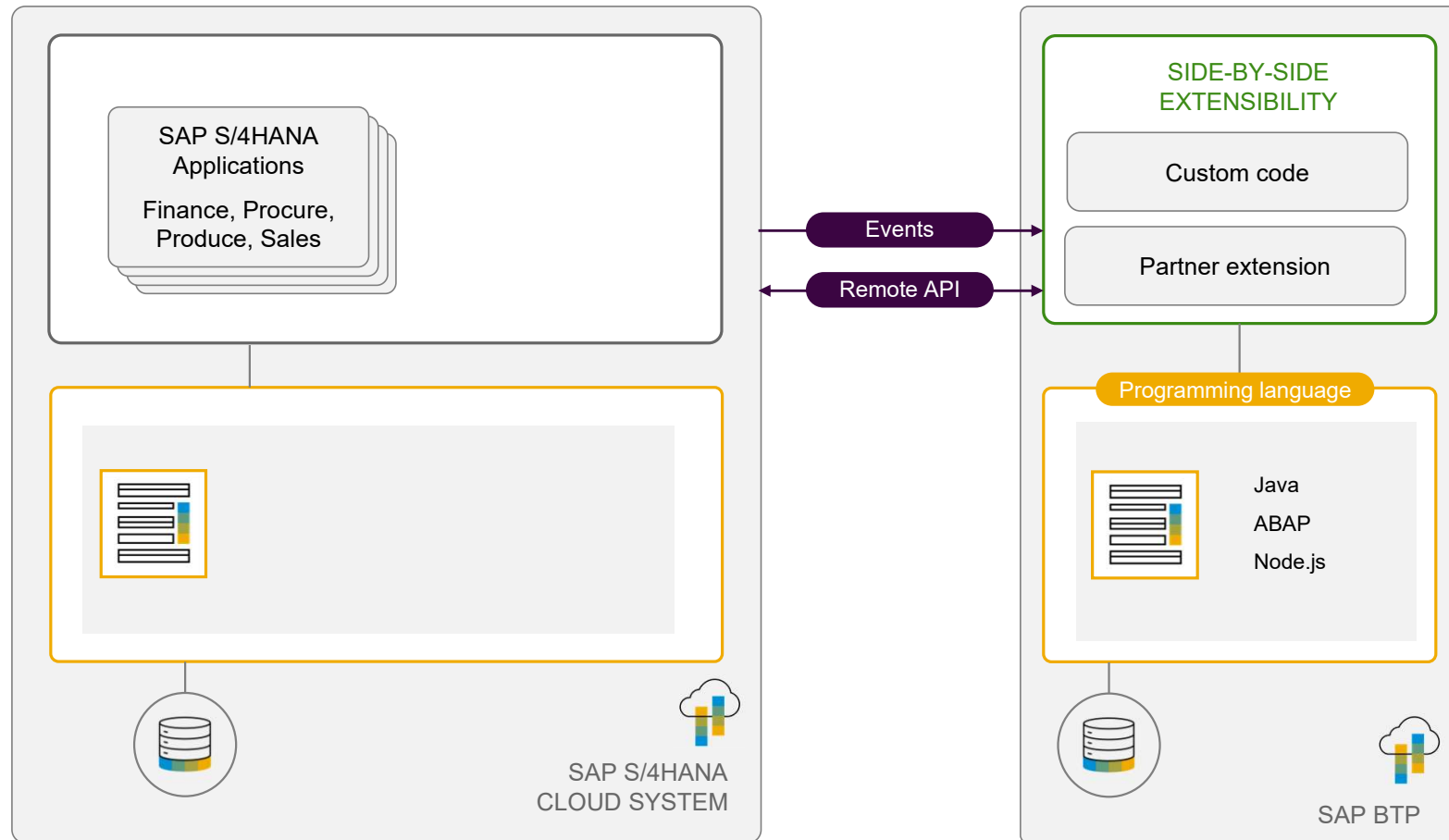
Custom fields can be used in applications and their UIs, Reports, Email templates, Form Templates, OData APIs and other

The screenshot shows the 'New Field' configuration dialog. The title is 'New Field'. Below the title is the 'Field Properties' section. The properties are as follows:

- \*Business Context: Sales: Sales Document Item (dropdown)
- \*Label: SalesDocumentExtensionTest (text field)
- \*Identifier: YY1\_ SalesDocumentExten (text field)
- \*Tooltip: SalesDocumentExtensionTest (text field)
- \*Type: Text (dropdown)
- \*Length: 20 (text field)
- Business Context Capacity: 6% (progress indicator)

At the bottom right, there are three buttons: 'Create', 'Create and Edit', and 'Cancel'.

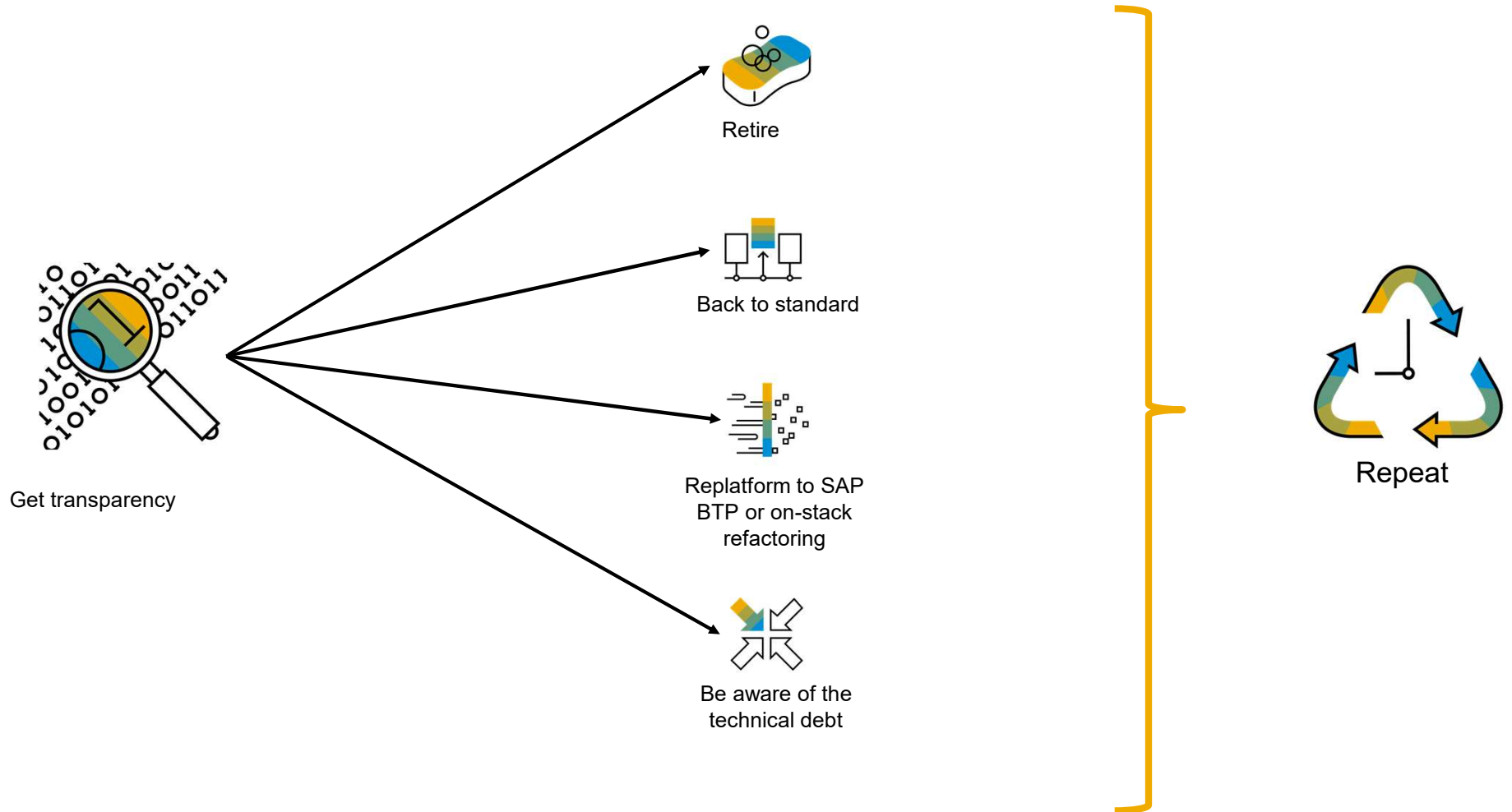
# SAP S/4HANA Cloud extensibility – Side-by-Side





**How to move towards a Clean Core?**

# How to clean the core? – and keep it clean



**Why BTP as Business Platform of Choice?**

# Customer Value



## Power connected end-to-end business processes

- SAP BTP is embedded in SAP applications such as Intelligent Suite (e.g. SAP S/4HANA) and Industry Cloud so customers can optimize cross-line of business processes and achieve competitive differentiation



## Multi-cloud openness

- Run SAP BTP in any hyperscaler cloud environment for flexibility and customer choice



## Extensive partner ecosystem

- 15,000 partners across 25 industries ensure personalization to meet the needs of your business



## Rapid implementation and fast time to value

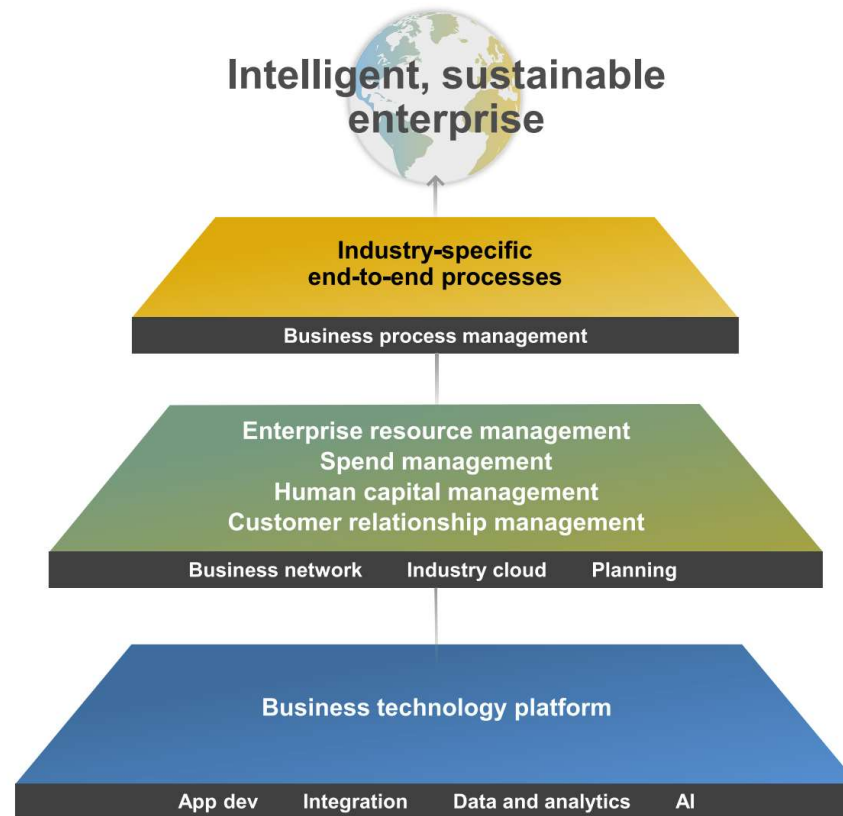
- Go live quick, reduce payback period, monetize investment, fund subsequent high-value use cases



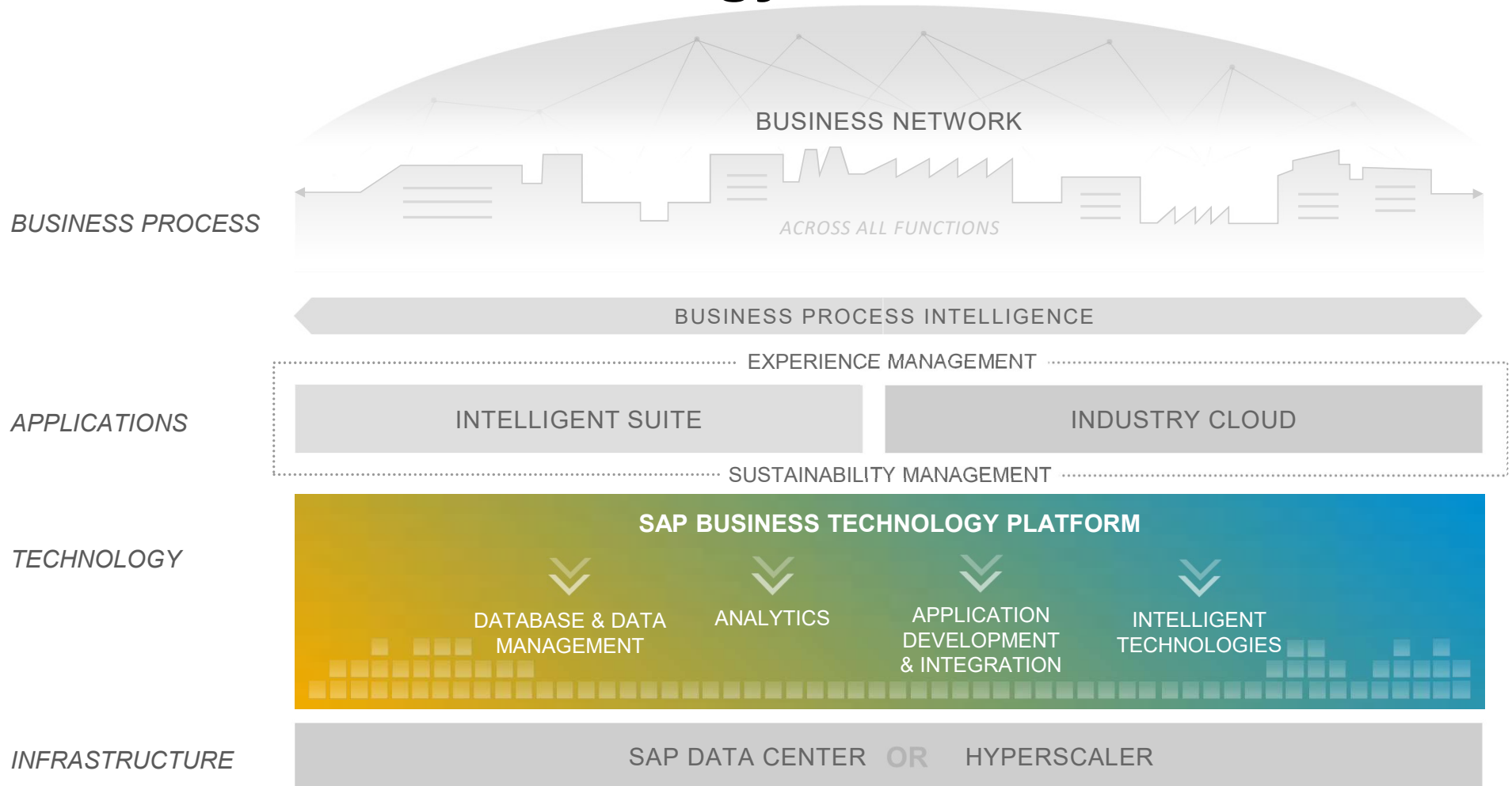
## Holistic business and technology platform

- Database & Data Management, Analytics, Application Development & Integration, and Intelligent Technologies (embedded) that provide Data-to-Value, Integration, and Extension customer outcomes

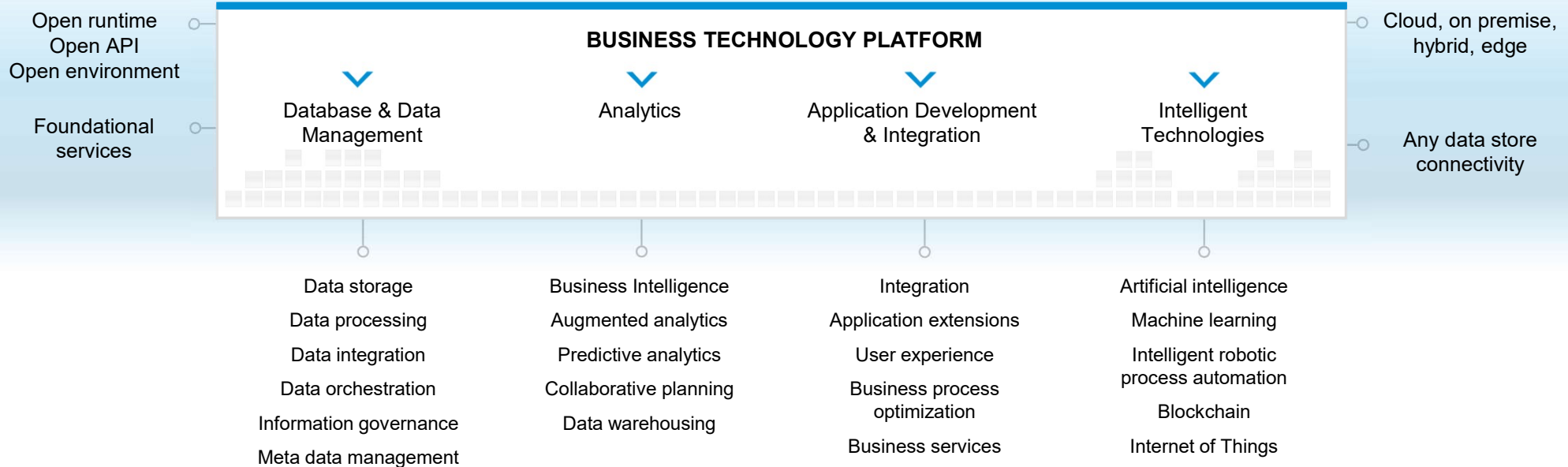
Enable every enterprise to become an **intelligent, sustainable enterprise**



# SAP Business Technology Platform



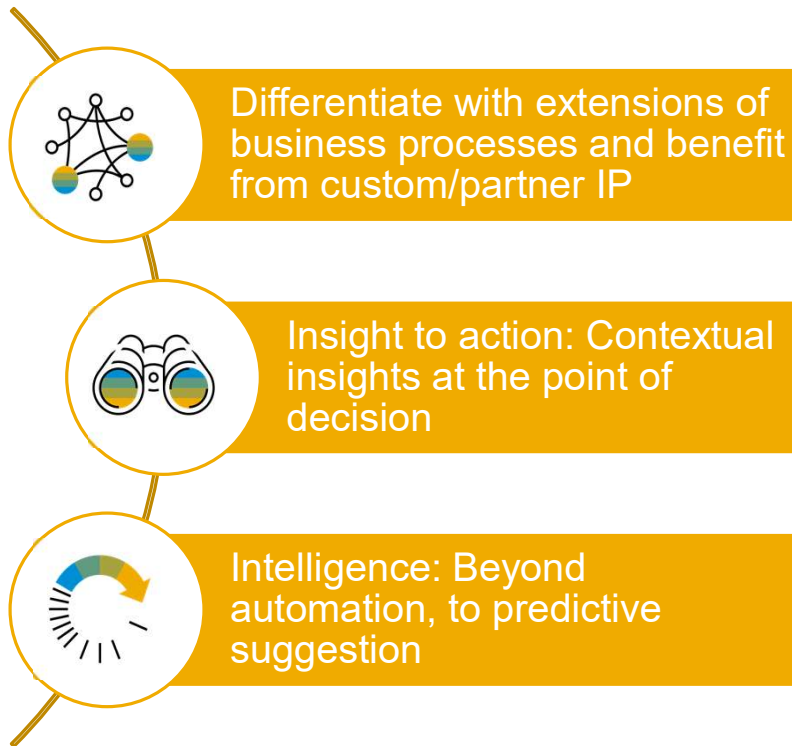
# Business Technology Platform: Deep Dive



# Business drivers for extensions of **SAP S/4HANA & BTP**

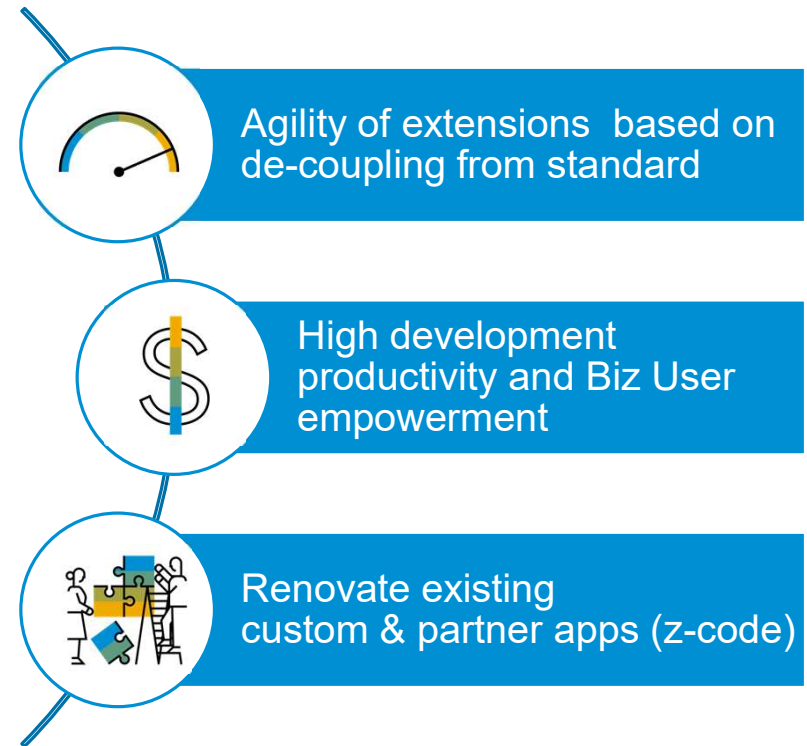
## Business perspective

Competitive advantage with custom specific innovations of business processes



## IT perspective

De-coupling of extensions and standard AND tight integration with SAP & 3<sup>rd</sup> party apps





# SAP Business Technology Platform

## Areas of Exploration



### Foundational Use Cases

SAP customers can use BTP for integration, Application Development, Data Management and Analytics.



### Optimization Use Cases

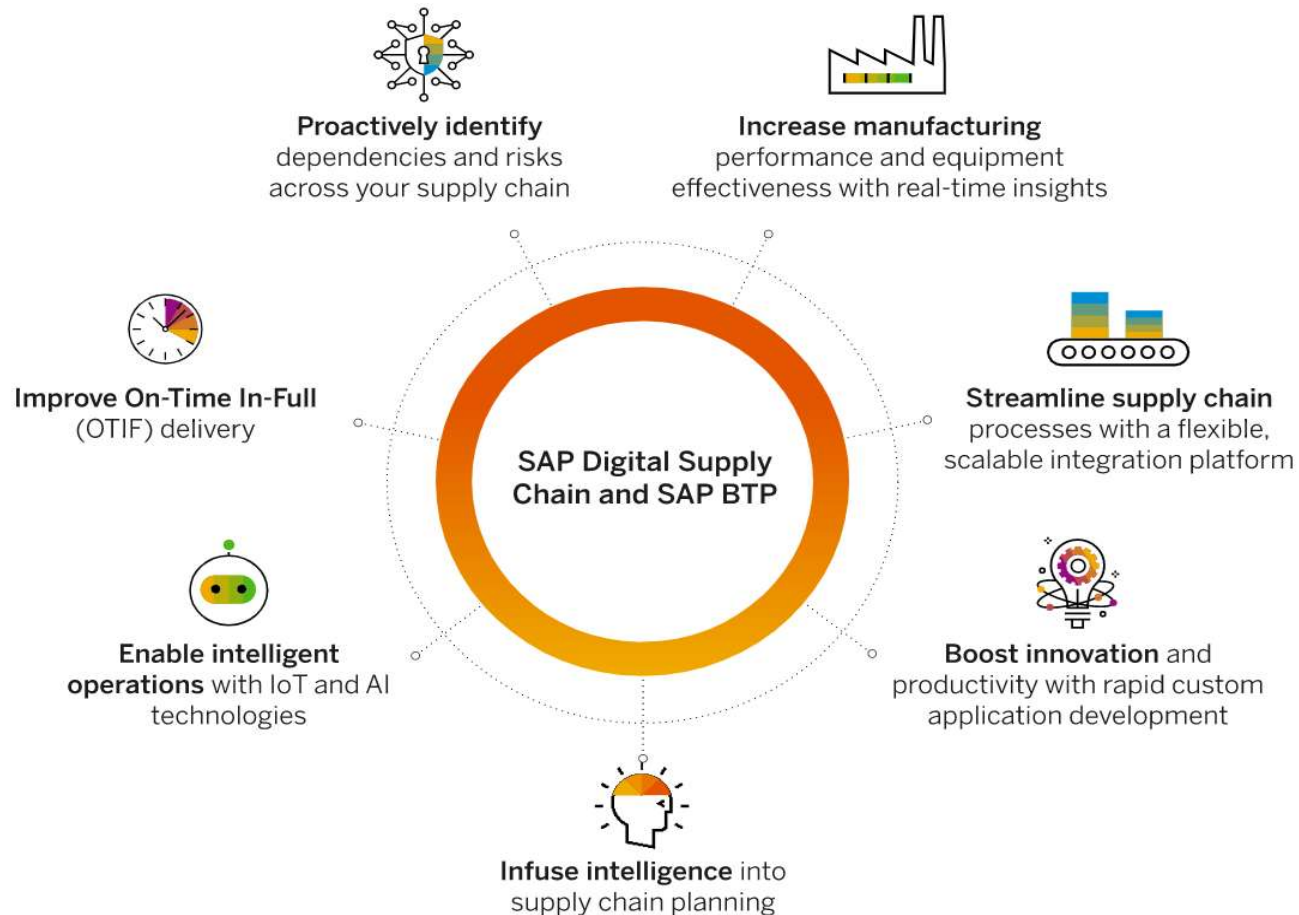
Utilize BTP to optimize and add value to existing business problems.



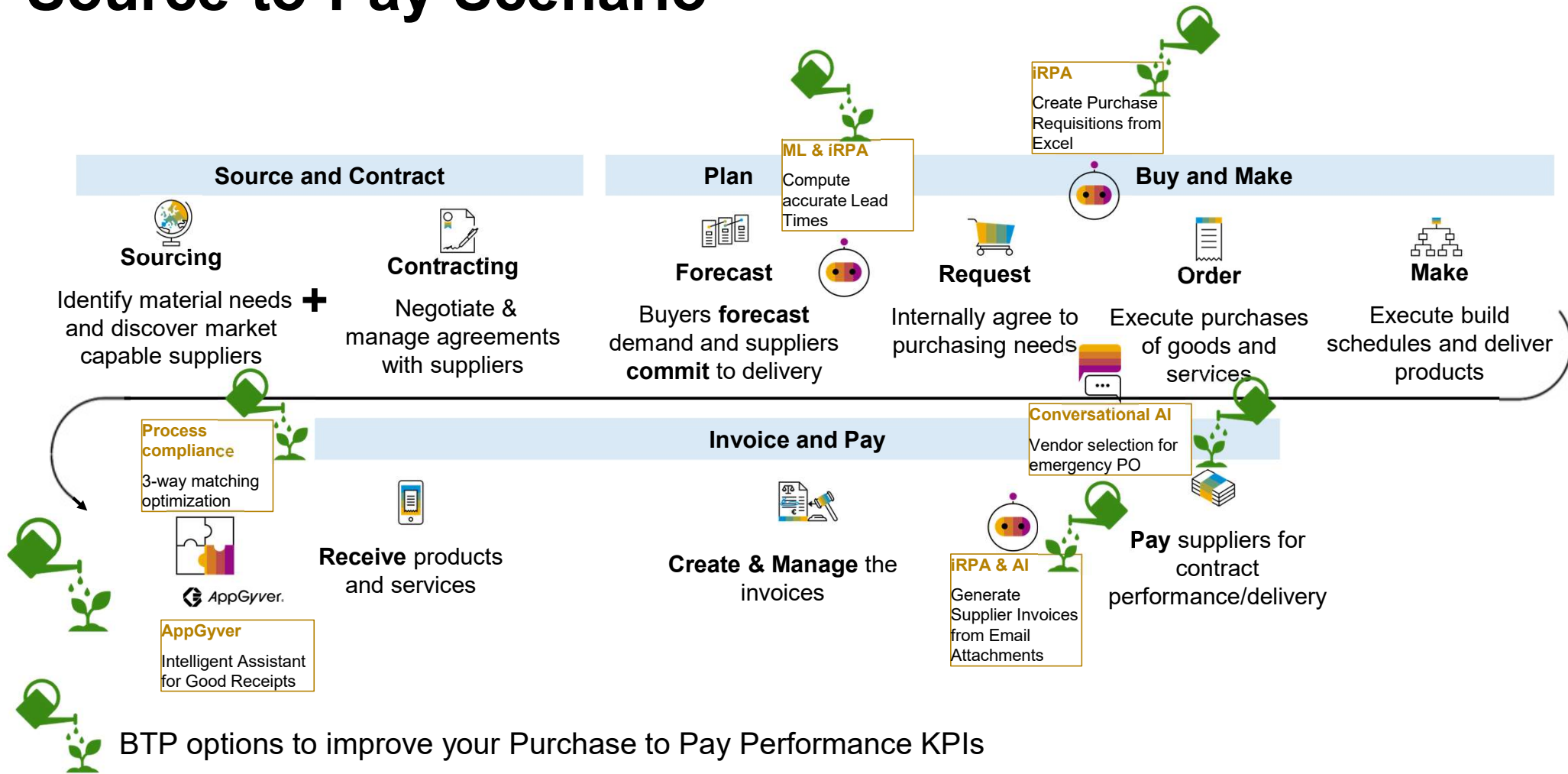
### Innovation Use Cases

Extend and differentiate, keeping the core standard

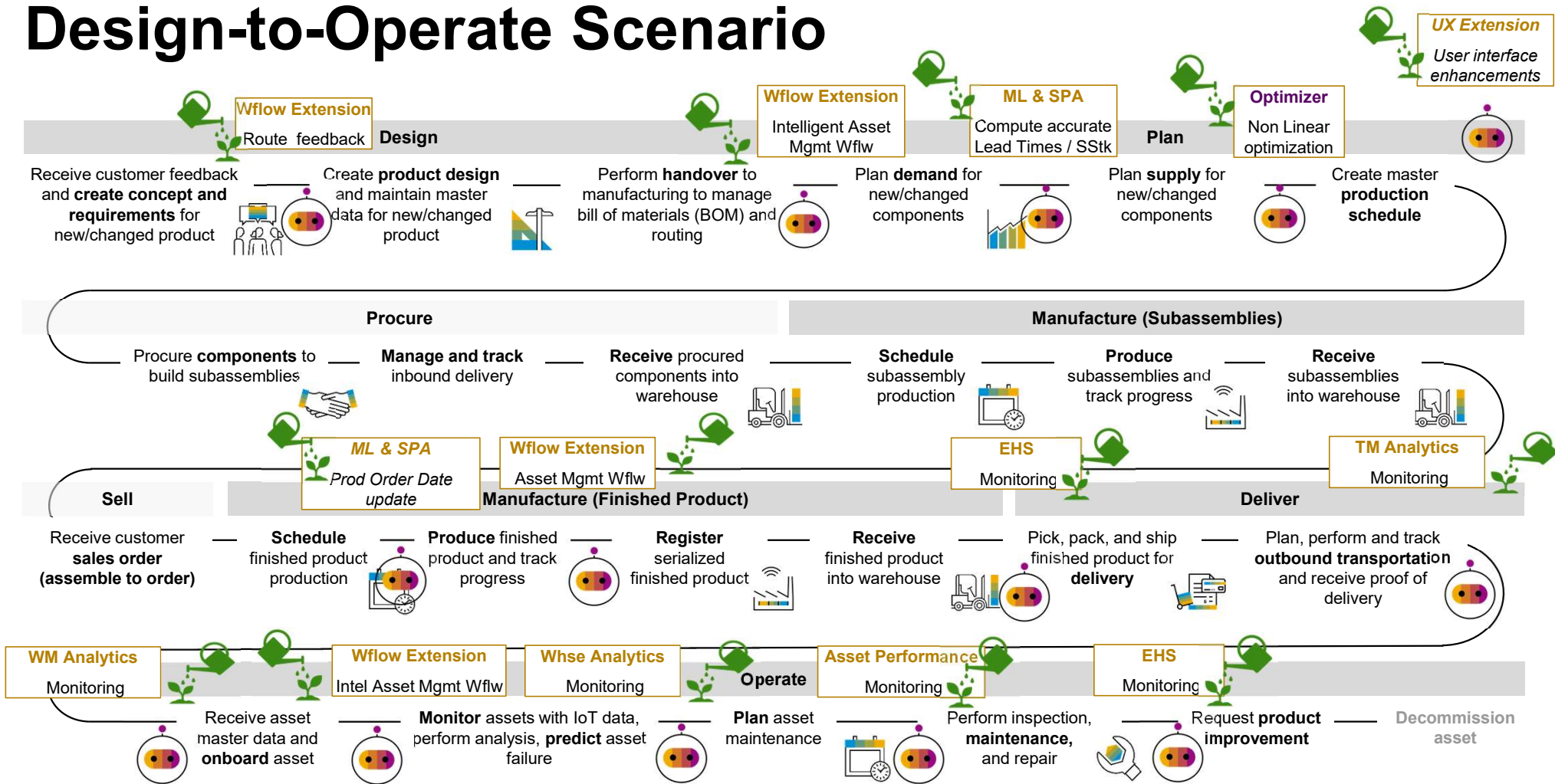
# 7 ways BTP Optimizes your Supply Chain



# Source-to-Pay Scenario



# Design-to-Operate Scenario



# SAP BTP Resources

## ONBOARDING



### [Resource Center](#)

Discover resources to ensure successful preparation, implementation and adoption of your solution



### [SAP API Business Hub](#)

Highlights key integration/extension scenario for SAP and third party solutions



### [BTP Use Cases](#)

See how other companies are solving their business challenges and driving innovation with BTP



### [BTP Value Maps](#)

Get direct access to SAP experts, collaboration forums, and high impact learning with SAP Value Maps



### [Onboarding Videos & Webinars](#)

[German](#) | [English](#)  
[On Demand Learning Content](#)  
[Onboarding Video Package](#)

## VALUE-REALIZATION



### [SAP Community](#)

Your place for collaboration with fellow customers and experts



### [Customer Success Event Hub](#)

Explore upcoming live events and on-demand sessions



### [Learning Journey](#)

Detailed guide to help you with your SAP BTP learning path



### [SAP Discovery Center](#)

Turn your business pain points into innovation success



### [\(Integration | Extension\) SAP Training](#)

Comprehensive self-paced, solution based learning opportunities and certification



### [Influence the Roadmap](#)

Customer offerings to influence existing programs and features

## SUPPORT



### [Support Portal](#)

A help portal that allows you to discover more support resources



### [Product Support Accreditation](#)

A program that guides you to get faster and easier closure to your incidents



### [Customer Interaction Center](#)

A central point of contact for non-technical queries and incidents



### [FAQs](#)

Commonly questions for the SAP BTP Solution



### [Estimator Tool](#)

Overview of solutions and their license model/pricing information

# Thank you.

Contact information:

**Thomas Alexander**

Chief Business Transformation Architect

SAP Business Transformation Services

[thomas.alexander@sap.com](mailto:thomas.alexander@sap.com)

+ 1 616 617-6968

Follow us



[www.sap.com/contactsap](http://www.sap.com/contactsap)

© 2019 SAP SE or an SAP affiliate company. All rights reserved.

No part of this publication may be reproduced or transmitted in any form or for any purpose without the express permission of SAP SE or an SAP affiliate company.

The information contained herein may be changed without prior notice. Some software products marketed by SAP SE and its distributors contain proprietary software components of other software vendors. National product specifications may vary.

These materials are provided by SAP SE or an SAP affiliate company for informational purposes only, without representation or warranty of any kind, and SAP or its affiliated companies shall not be liable for errors or omissions with respect to the materials. The only warranties for SAP or SAP affiliate company products and services are those that are set forth in the express warranty statements accompanying such products and services, if any. Nothing herein should be construed as constituting an additional warranty.

In particular, SAP SE or its affiliated companies have no obligation to pursue any course of business outlined in this document or any related presentation, or to develop or release any functionality mentioned therein. This document, or any related presentation, and SAP SE's or its affiliated companies' strategy and possible future developments, products, and/or platforms, directions, and functionality are all subject to change and may be changed by SAP SE or its affiliated companies at any time for any reason without notice. The information in this document is not a commitment, promise, or legal obligation to deliver any material, code, or functionality. All forward-looking statements are subject to various risks and uncertainties that could cause actual results to differ materially from expectations. Readers are cautioned not to place undue reliance on these forward-looking statements, and they should not be relied upon in making purchasing decisions.

SAP and other SAP products and services mentioned herein as well as their respective logos are trademarks or registered trademarks of SAP SE (or an SAP affiliate company) in Germany and other countries. All other product and service names mentioned are the trademarks of their respective companies.

See [www.sap.com/copyright](http://www.sap.com/copyright) for additional trademark information and notices.

