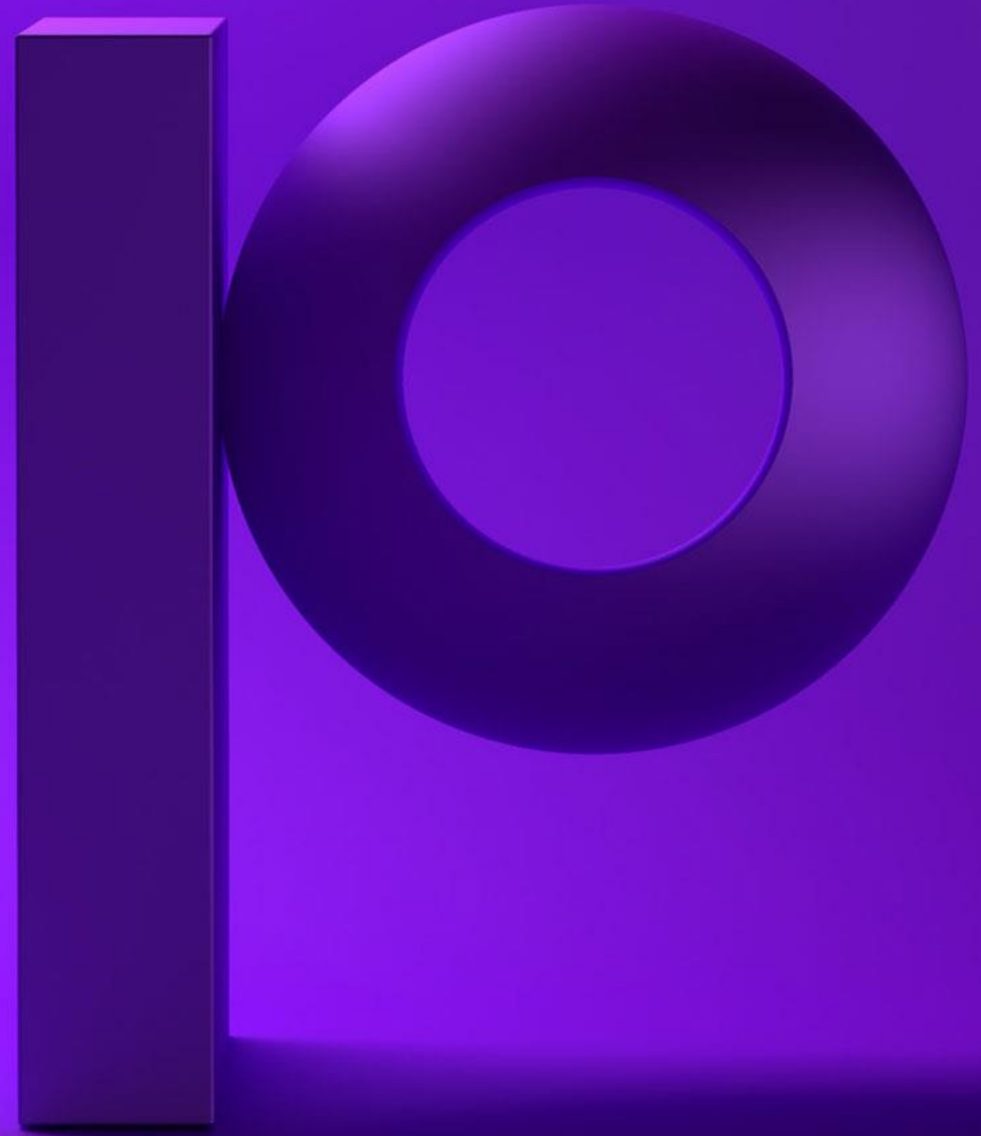


precisely

Change the way you
work with SAP through
automation



Winshuttle is now
part of Precisely,
the leader in data
integrity

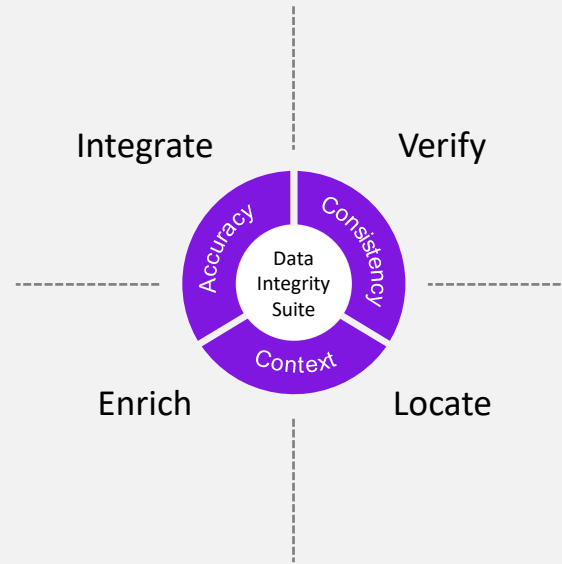
The logo for Precisely, featuring the word "precisely" in a white, lowercase, sans-serif font. The letter "p" is stylized with a vertical bar extending downwards. The letter "o" is a large, 3D-rendered sphere with a dark purple shadow underneath it, positioned behind the word. The background is a solid purple color.

precisely



The global leader in data integrity software

Our data integrity software, data enrichment products, and strategic services deliver accuracy, consistency, and context to power confident business decisions.



12,000

customers

Customers in more than
100 countries

99

of the Fortune 100

2,300
employees

Brands you trust, trust us



Data leaders partner with us



The background features several abstract, three-dimensional geometric shapes in various shades of purple and blue. These include a large horizontal rectangle at the top left, a sphere to its right, a vertical rectangle on the right side, a sphere below the top-left rectangle, a vertical rectangle below the top-right sphere, a sphere below the middle vertical rectangle, a sphere at the bottom left, and a square at the bottom center. The shapes are rendered with soft shadows, giving them a sense of depth.

Empowering business teams
to make an impact

Explosion of data

Data is the fuel for decision-making today



\$1.3 trillion spent
on digital transformation
last year



80% of CEOs
accelerating digital
transformation



67% spending
more on technology
than people

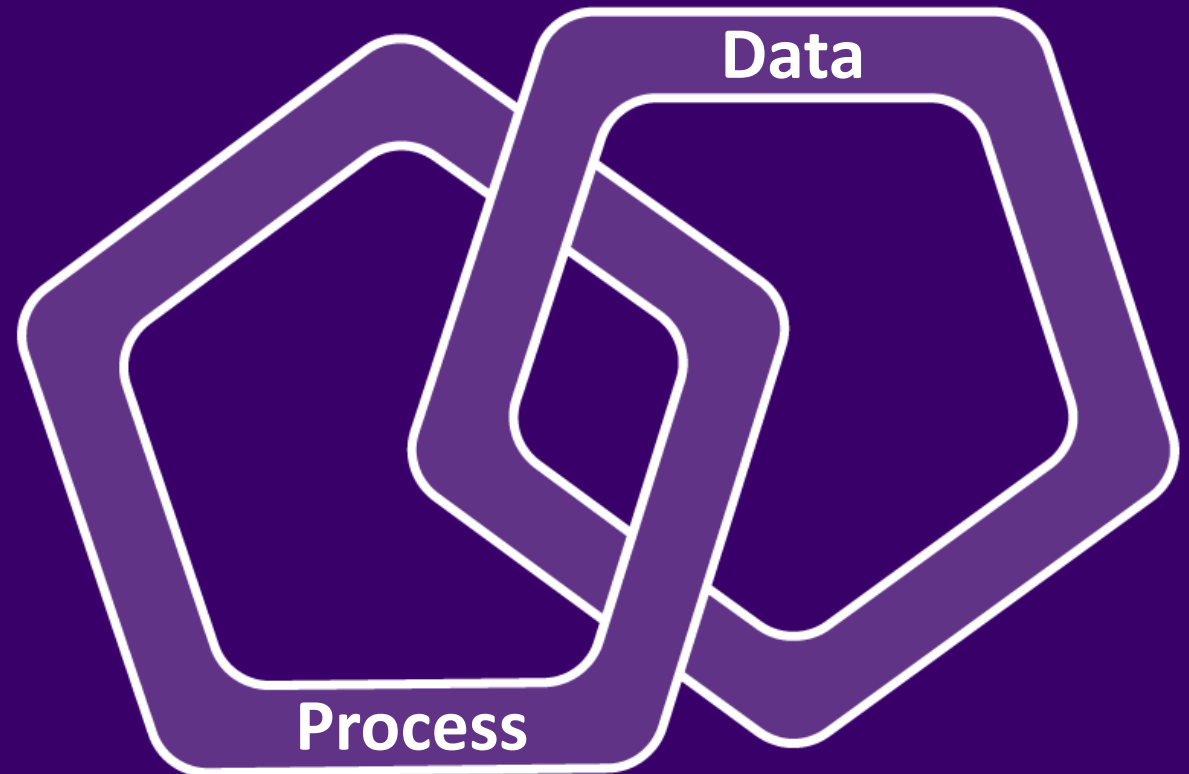


64 Zetabytes
of data today,
growing to 180+
zetabytes by 2025

Tackle process and data together

- Product launches
- Product data management
- Customer onboarding & management
- Vendor onboarding & management
- Asset management
- Financial master data

and more...



Compete and thrive in today's dynamic world



Go faster

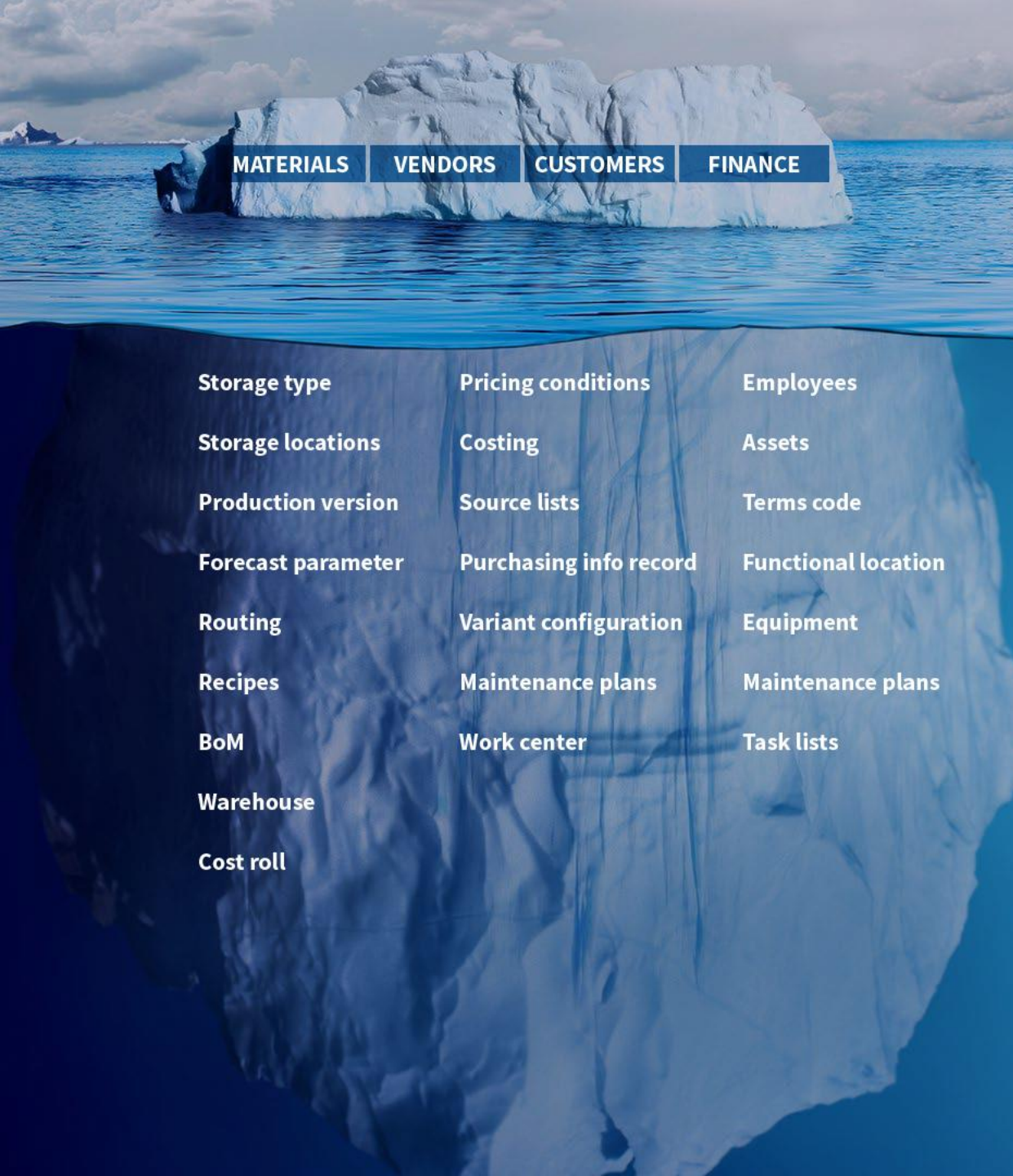


Be more agile



Improve the quality of your most important data





MATERIALS

VENDORS

CUSTOMERS

FINANCE

Storage type

Pricing conditions

Employees

Storage locations

Costing

Assets

Production version

Source lists

Terms code

Forecast parameter

Purchasing info record

Functional location

Routing

Variant configuration

Equipment

Recipes

Maintenance plans

Maintenance plans

BoM

Work center

Task lists

Warehouse

Cost roll

The complexity of SAP master data

The problems we solve



Precisely Automate portfolio

Automate Studio

STANDALONE

Exchange data with SAP quickly and easily using Excel

- Data creation and maintenance
- Data migration
- Operational reporting
- Data stewardship

Business users work in Excel



Automate Studio Manager

GOVERNED

Share, manage, & control Precisely across the enterprise

- Basic 2-step workflow
- Centralized management
- Granular control of licenses, users & policies
- Extensive audit and ROI reporting
- Server-side job execution

Business users work in Excel



Automate Evolve

WORKFLOW-ENABLED

Automate and streamline SAP processes using workflows

- Advanced form and workflow capabilities
- Advanced data stewardship capabilities via web forms
- Detailed process analytics

Business users work in Excel or web forms



A complete automation platform

Desktop Automation

Excel to SAP

Exchange data with SAP
quickly and easily using Excel



Process Automation

Excel Workflow

Automate and accelerate
SAP business processes
through Excel file
management workflows

Form & Workflow

Automate and accelerate
SAP business processes with
integrated forms and
workflows

Start with desktop automation

Desktop Automation

Excel to SAP

Exchange data with SAP quickly and easily using Excel



Process Automation

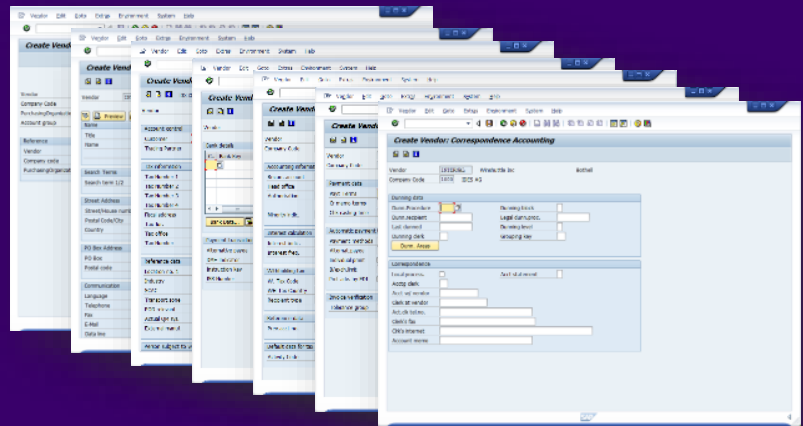
Excel Workflow

Automate and accelerate SAP business processes through Excel file management workflows

Form & Workflow

Automate and accelerate SAP business processes with integrated forms and workflows

Replace multiple SAP screens with business-friendly Excel



Run completed. Successful runs: 14

Log Winshuttle Studio 11.2
SAP System: Client: SAP User: WE6800sigridk
Script Name: MM01_Create_Materials_Script
Mode: Standard (Non Batch without controls)
Start Row: 7 End Row: 0
Number of Errors: 0 Records Uploaded: 14
Date and Time: 2/14/2018 4:28:28 PM
Execution Time: 00:01:26
Run Reason: -

Validate Log Winshuttle Studio 11.2
SAP System: Client: SAP User: WE6800sigridk
Script Name: MM01_Create_Materials_Script
Mode: Standard (Non Batch without controls)
Start Row: 7 End Row: 0
Number of Errors: 0 Records Validated: 14
Date and Time: 2/14/2018 4:19:29 PM
Execution Time: 00:01:01
Run Reason: -

WINSHUTTLE MM01 CREATE MATERIAL - Finished Goods

RUN RESULTS

No.	RUN LOG	VALIDATE LOG	*Material Number (uses external numbering)	*Industry sector	*Material Type	*Material (Sh
7	Material DEMOMATERIAL-0003 created	Success	DEMOMATERIAL-0003	F	FERT	Demo Ma
8	Material DEMOMATERIAL-0004 created	Success	DEMOMATERIAL-0004	F	FERT	Demo Ma
9	Material DEMOMATERIAL-0005 created	Success	DEMOMATERIAL-0005	F	FERT	Demo Ma
10	Material DEMOMATERIAL-0006 created	Success	DEMOMATERIAL-0006	F	FERT	Demo Ma
11	Material DEMOMATERIAL-0007 created	Success	DEMOMATERIAL-0007	F	FERT	Demo Ma
12	Material DEMOMATERIAL-0008 created	Success	DEMOMATERIAL-0008	F	FERT	Demo Ma
13	Material DEMOMATERIAL-0009 created	Success	DEMOMATERIAL-0009	F	FERT	Demo Ma
14	Material DEMOMATERIAL-0010 created	Success	DEMOMATERIAL-0010	F	FERT	Demo Ma
15	Material DEMOMATERIAL-0011 created	Success	DEMOMATERIAL-0011	F	FERT	Demo Ma
16	Material DEMOMATERIAL-0012 created	Success	DEMOMATERIAL-0012	F	FERT	Demo Ma

Automate Studio

The right capabilities to get SAP work done faster and improve data quality.

Mass create &
update using Excel

Data
stewardship

Deep SAP
integration

Low-code/no-code
design

What you can do with Automate Studio



Automate any SAP
business process



Streamline data migration
and conversions



Create operational
reports



Dorman speeds through master data changes



Challenge

- Change subset of materials from 'Manufactured' to 'Kitted'
- Update BoMs and Routings
- Change sales order to reflect non-kitted materials

Results

PER 100 MATERIALS

	Hours	Total Cost	Difference
Manual Processes	60	\$4,500	
Using desktop automation	5	\$375	\$4,125 saved

NEW SINCE 1918 3,000 materials converted
Savings = \$123,750

- Minimal business impact
- Improved data quality

Automate Evolve

The right combination of capabilities to automate data-intensive processes.

Enterprise-grade
workflow &
automation

Robust data
stewardship

Deep SAP
integration

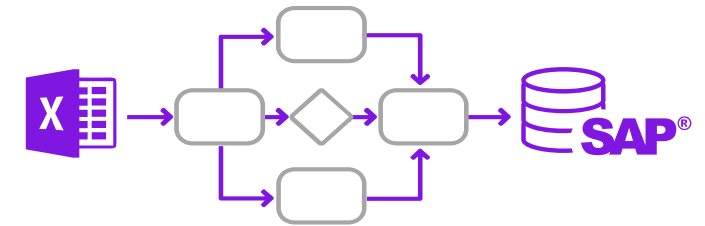
Low-code/no-code
design

Automate Evolve

Includes Automate Studio—our market leading Excel-to-SAP automation platform

Automate and streamline SAP business processes using workflows

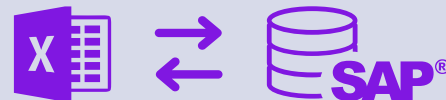
- Advanced form and workflow capabilities
- Advanced data stewardship capabilities via web forms
- Detailed process analytics



Automate Studio

Exchange data with SAP quickly and easily using Excel

- Data creation and maintenance
- Data migration
- Operational reporting
- Data stewardship



Share, manage, & control Precisely solutions across the enterprise

- Centralized content management
- Granular control of licenses, users & policies
- Extensive audit and ROI reporting
- Server-side job execution



Look for a complete set of capabilities



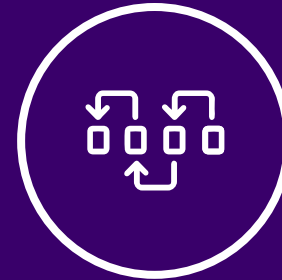
Choice of forms or
Excel front end



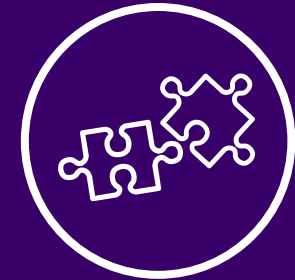
Smart, tailored, role-
based forms



SmartTables



Dynamic process
linking



Flexible, extensible
solution architecture



Process dashboards
& reports



Audit trails for
process & data



Automated data
exchange with SAP



Live SAP data
validation



Granular user & policy
management

Make an impact

across your SAP landscape



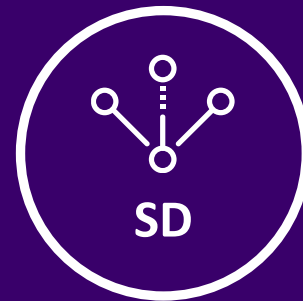
FI

Financial
Accounting



CO

Controlling



SD

Sales and
Distribution



MM

Materials
Management



PM

Plant
Maintenance



AM

Asset
Management



PS

Project Systems



PP

Production
Planning



QM

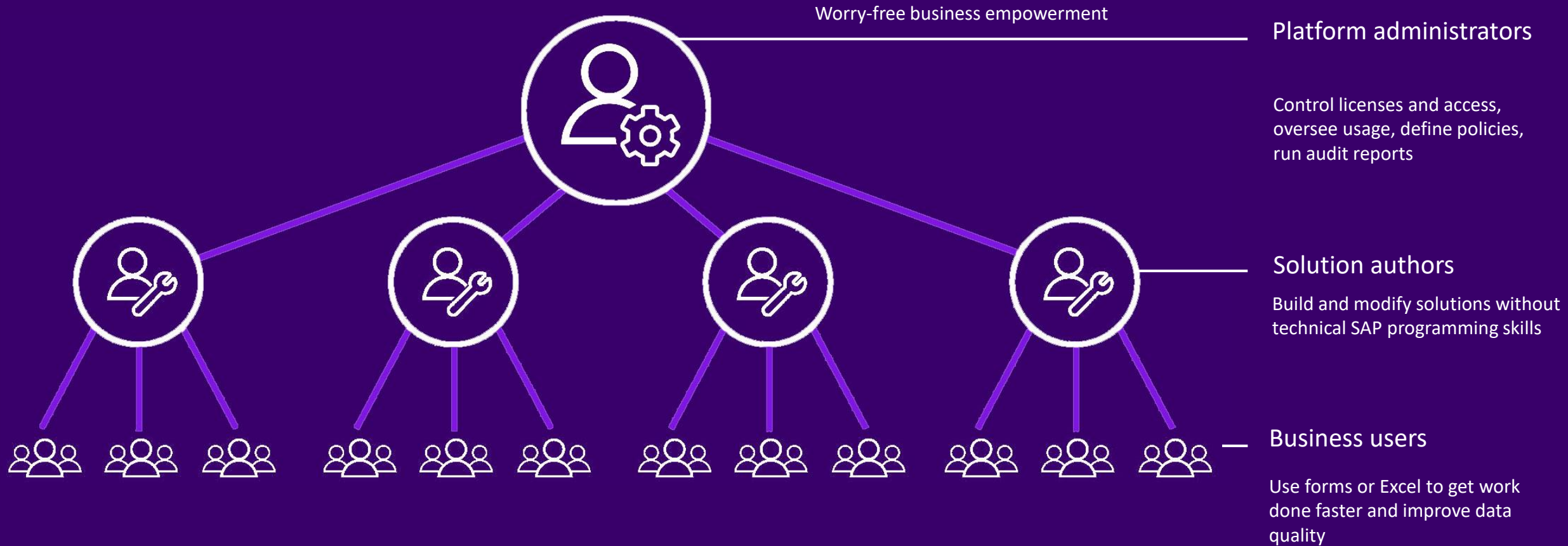
Quality
Management



HR

Human
Resources

Make an impact at **scale** low-code, no-code design



Product data solutions

Get products to market faster



The systems and processes need
to match the speed of the market.

Sr. Product Development Manager




Speed up
SAP launch
processes by **50%**
or more

Operations

New Product Launcher

Project Manager View



New or Line Ext **Component Change** **Package Change** **Geo Expansion**

Business Unit * Region *

Project Scope

Project Name *	Project ID	Project Manager	Project Type	Project Value	
<input type="text" value="VEGAN ENERGY BAR"/>	<input type="text" value="NPI - 000459"/>	<input type="text" value="Heather Oebel"/>	<input type="text" value="New Product or Line Extension"/> <small>select from buttons above</small>	<input type="text" value=""/> <small>Enter approximate value in USD</small>	
Launch Date	Brand *	Business Unit *	Region *	Customer Type	Request Date
<input type="text" value="10/06/2019"/> <small>When is the expected project launch?</small>	<input type="text" value="Good Eats"/>	<input type="text" value="Food"/>	<input type="text" value="NA"/>	<input type="text" value="B"/>	<input type="text" value="07/08/2019"/>
Priority	Project Status	Stage Gate			
<input type="text" value="Standard"/>	<input type="text" value="New"/>	<input type="text" value="Plan Ready"/>			

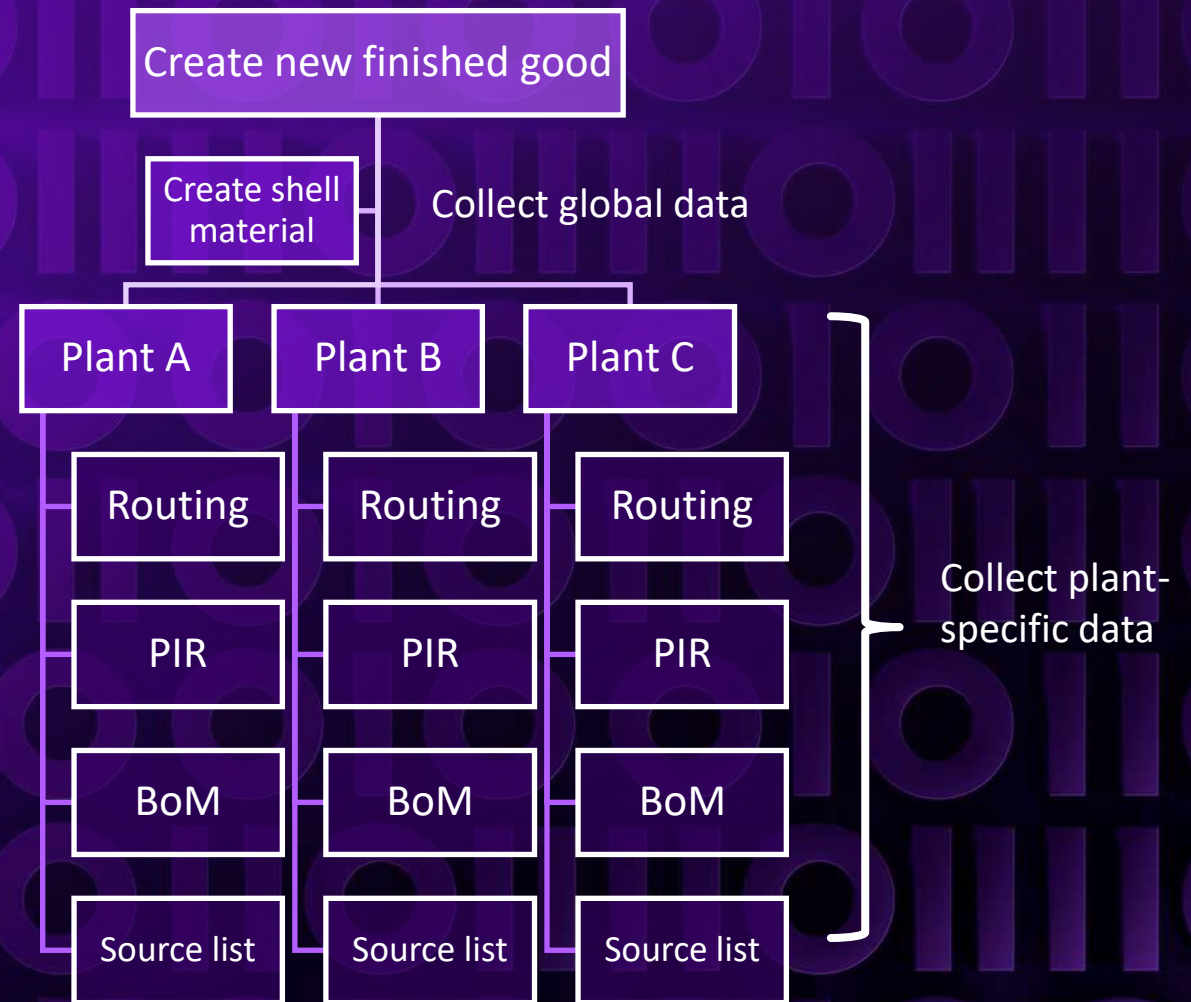
New Product Data

<input type="text"/>	<input type="text"/>	<input type="text"/>	<input type="text"/>	<input type="text"/>	<input type="text"/>
----------------------	----------------------	----------------------	----------------------	----------------------	----------------------

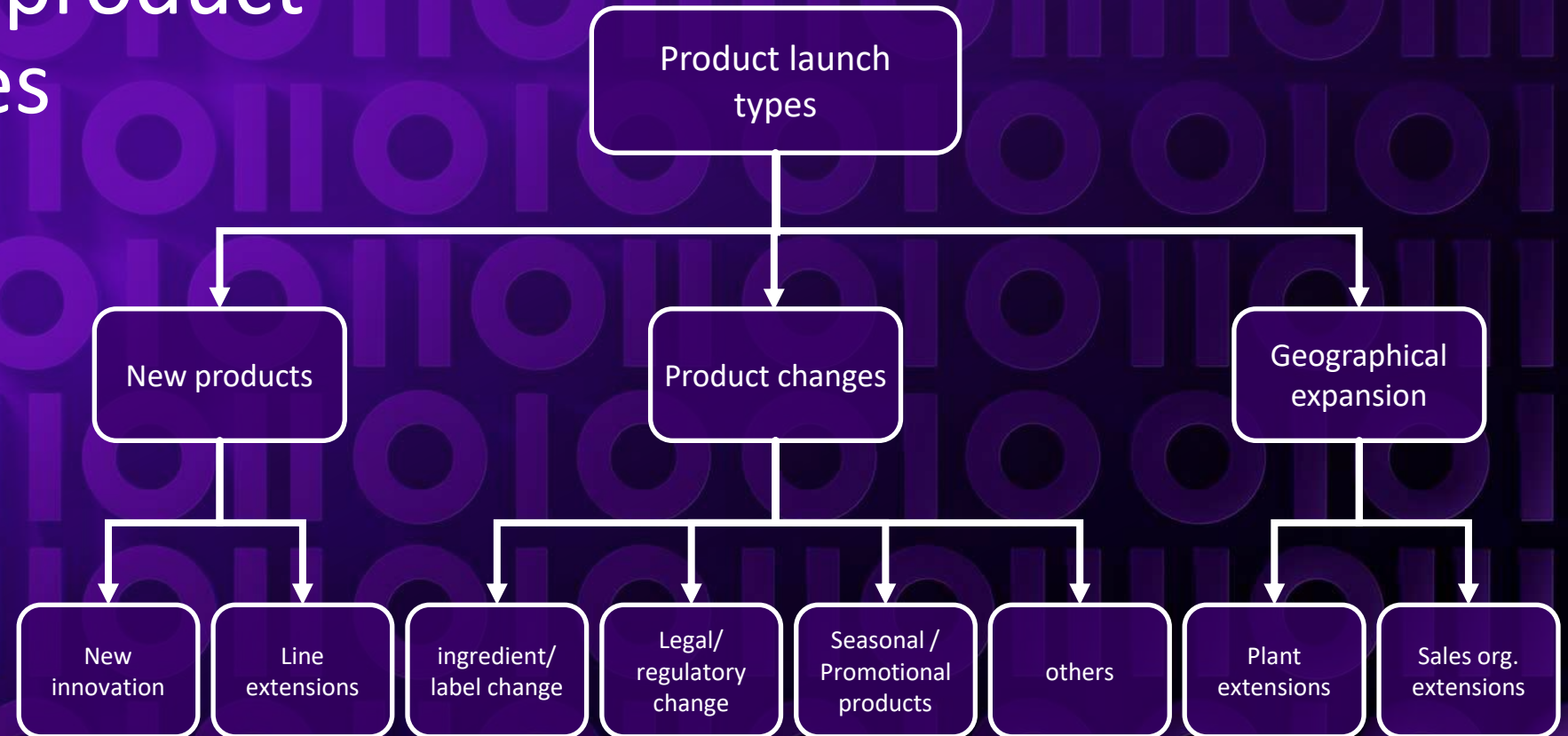
Streamline complex processes

Dynamic process linking

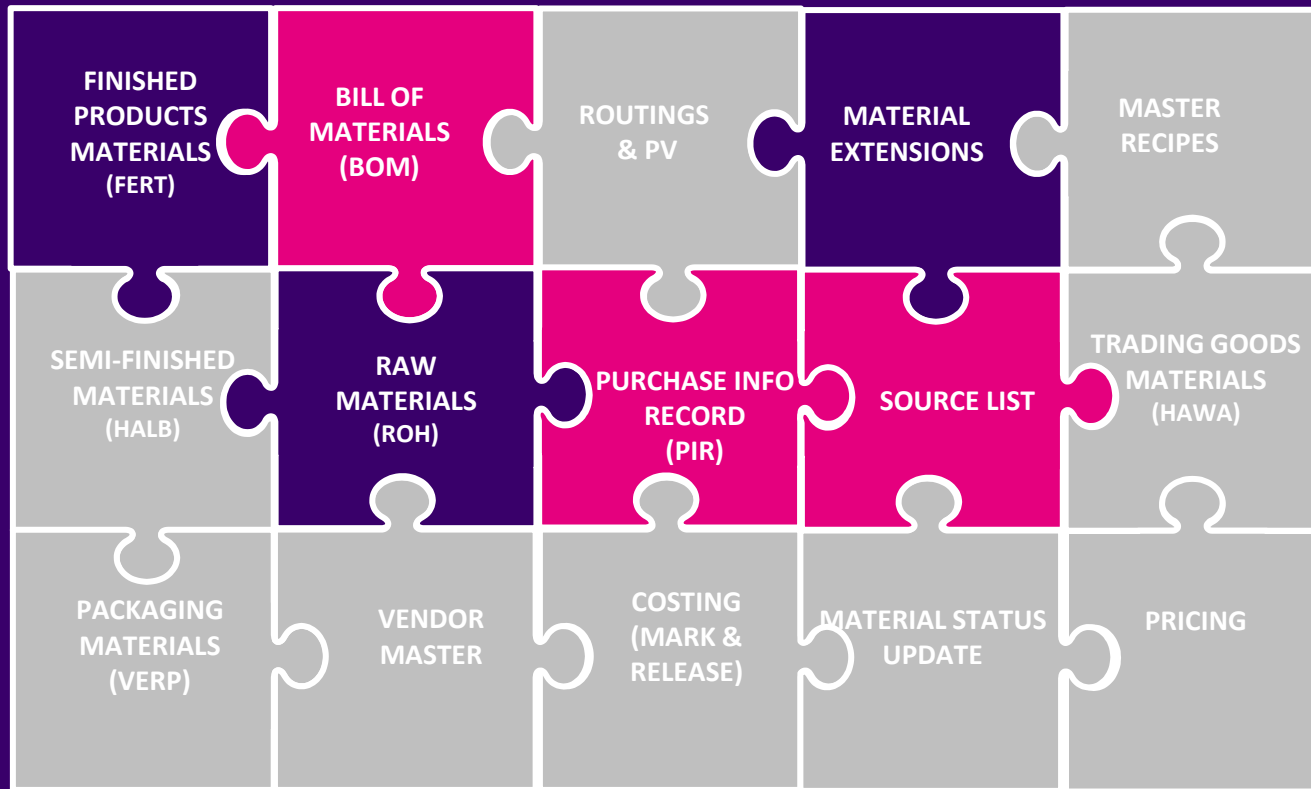
- Automate complex multi-layered processes
- Streamline data collection across data objects and business units
- Handle centralized and decentralized data in one solution



Use **one solution**
for all your product
launch types



Modular, strategic product launch platform



- Start with the data objects that make sense for your business
- Expand over time
- Meet the needs of any organizational structure type
- Supports high complexity and volume



Automate SAP processes when:

- Errors have costly consequences
- Take too long, impacting business/revenue
- Are complex with many participants
- Contain complex data & can span many objects
- With high volumes of data maintenance requests



CUSTOMER STORY:

Energy Drink Company

CHALLENGE

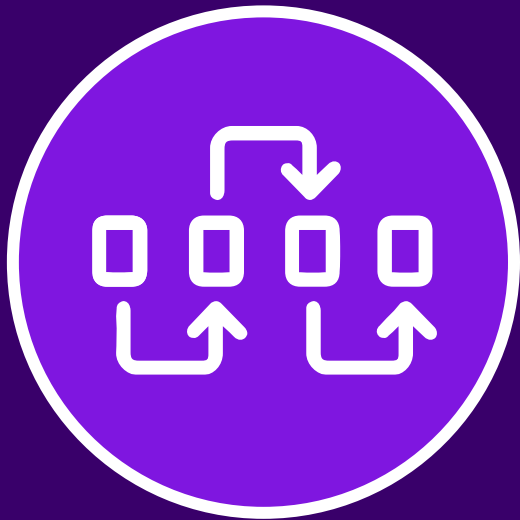
- Slow, manual processes causing product launch bottlenecks
- Lack of visibility into launch project status

SOLUTION

- Digitized three launch processes
- Reduced product launch cycle times by 50-75%
- Increased visibility and improved governance
- Achieved repeatable, predictable processes



What's next for SAP automation?



Integration into
larger, complex
processes



Incorporation of
AI and machine
learning



Automating Fiori
processes



Let's continue the conversation...



www.winshuttle.com

Demos

White Papers

Case Studies



Contact us

Set up a 30 minute personalized demo

info@winshuttle.com

precisely

Microsoft Partner

Gold Application Development
Gold Collaboration and Content



SAP® Certified
Integration with SAP® S/4HANA

Questions!



precisely

Questions!



CASE STUDY: ENERGY DRINK COMPANY

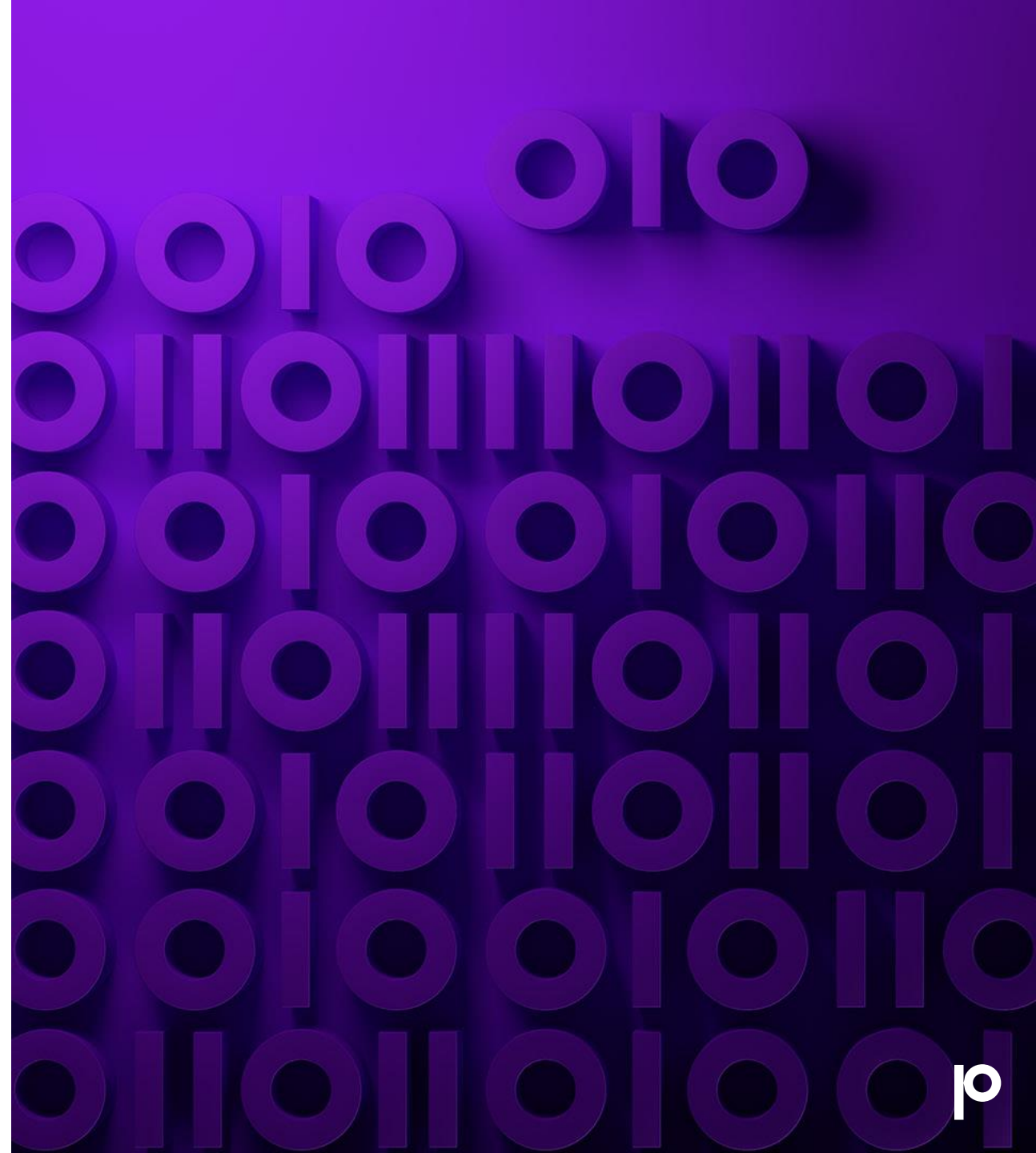
A major transformation



“Organized chaos”

Then the global
distribution deal
happened....

...and their SAP launch processes became a
bottleneck



Projects identified



Point of Sale Materials

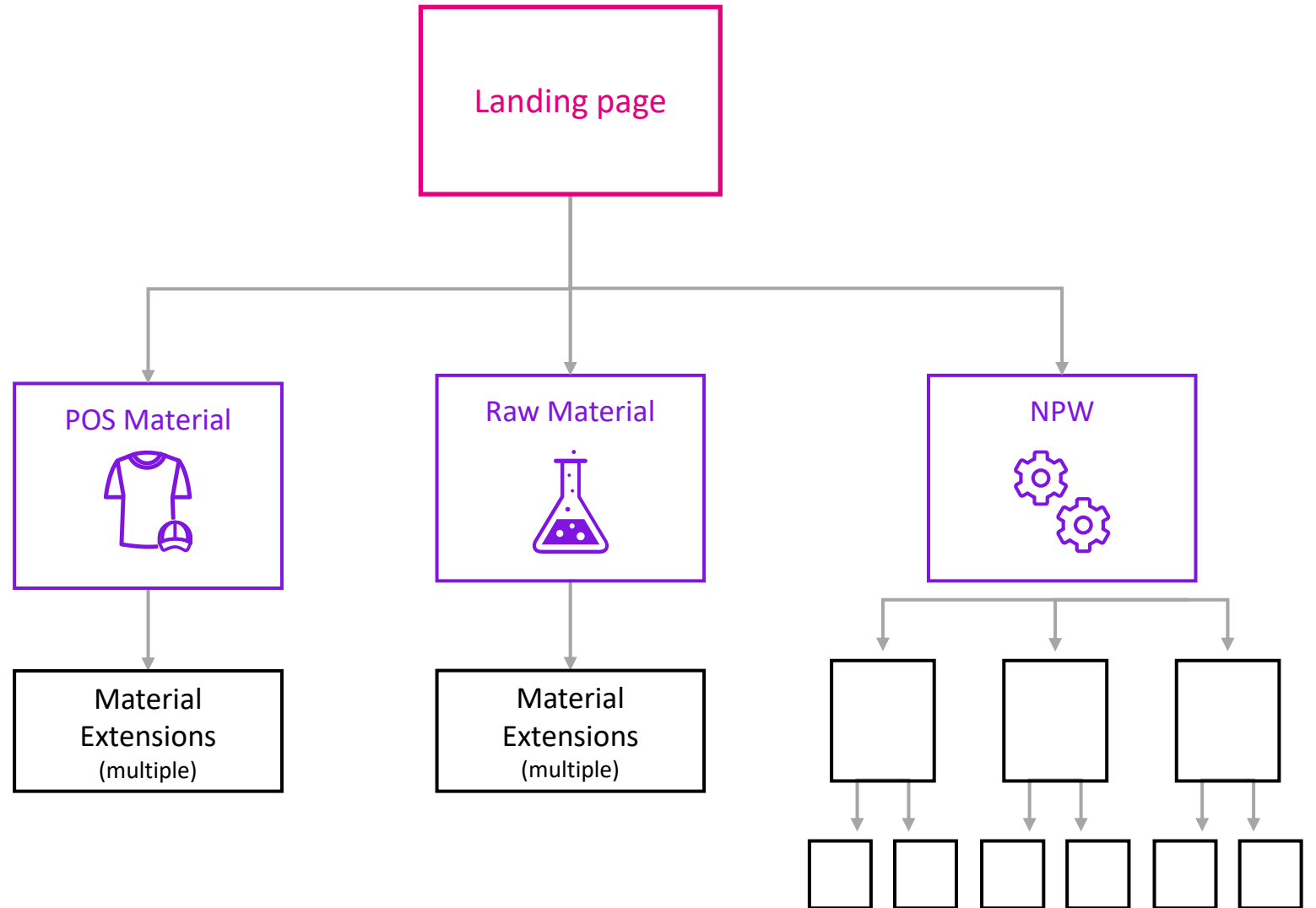


Raw Materials



NPI Process

Solution highlights



Reduced cycle times by

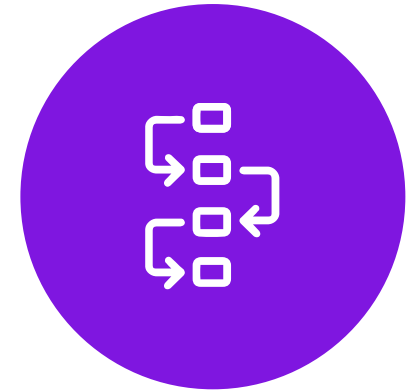
50-75%



Visibility



Governance



Repeatable

67% of global CEOs
agree with this
statement:

“Acting with agility is the
new currency of business; if
we are too slow, we will be
bankrupt.”

KPMG's 2019 CEO Outlook



80%

of leaders have seen DX efforts
accelerate during the pandemic



67%

are likely to invest more in technology
than they are in people.