



SAP Data Warehouse Cloud

Unleash Your Data-Driven Business

Disclaimer

The information in this presentation is confidential and proprietary to SAP and may not be disclosed without the permission of SAP. Except for your obligation to protect confidential information, this presentation is not subject to your license agreement or any other service or subscription agreement with SAP. SAP has no obligation to pursue any course of business outlined in this presentation or any related document, or to develop or release any functionality mentioned therein.

This presentation, or any related document and SAP's strategy and possible future developments, products and or platforms directions and functionality are all subject to change and may be changed by SAP at any time for any reason without notice. The information in this presentation is not a commitment, promise or legal obligation to deliver any material, code or functionality. This presentation is provided without a warranty of any kind, either express or implied, including but not limited to, the implied warranties of merchantability, fitness for a particular purpose, or non-infringement. This presentation is for informational purposes and may not be incorporated into a contract. SAP assumes no responsibility for errors or omissions in this presentation, except if such damages were caused by SAP's intentional or gross negligence.

All forward-looking statements are subject to various risks and uncertainties that could cause actual results to differ materially from expectations. Readers are cautioned not to place undue reliance on these forward-looking statements, which speak only as of their dates, and they should not be relied upon in making purchasing decisions.

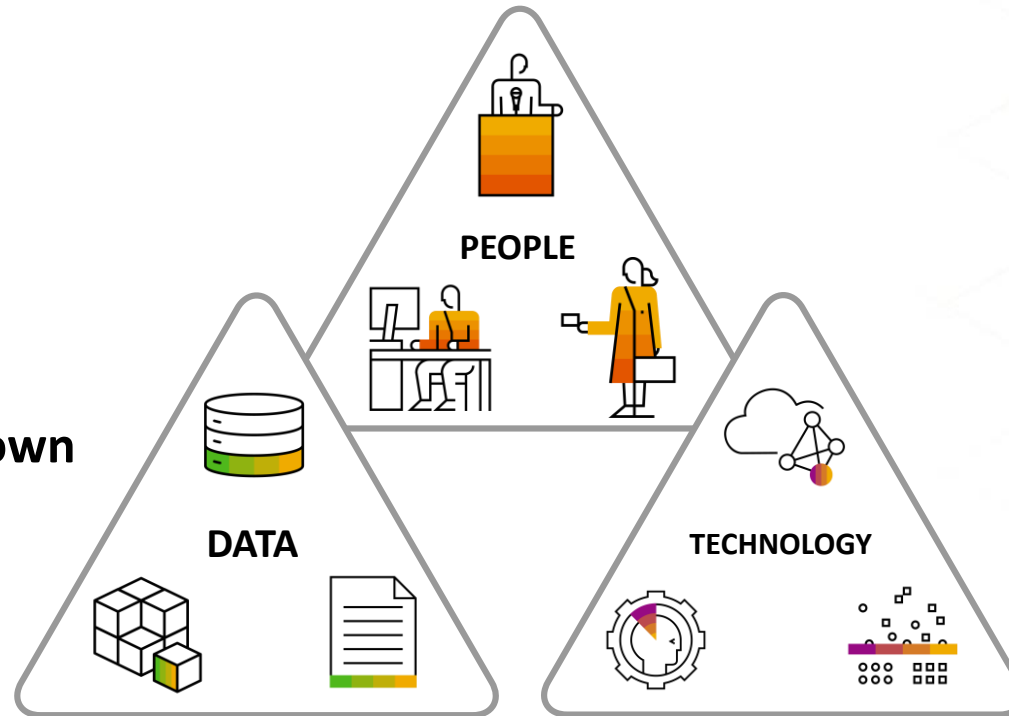
A woman with curly hair and glasses is working on a laptop in a dimly lit office. The background shows a wall with data charts and a bookshelf. The text 'SAP Data Warehouse Cloud Introduction' is overlaid on the image.

SAP Data Warehouse Cloud Introduction

The Challenge: **Data and Analytics**

...How to empower
all stakeholders?

...How to break down
data silos?

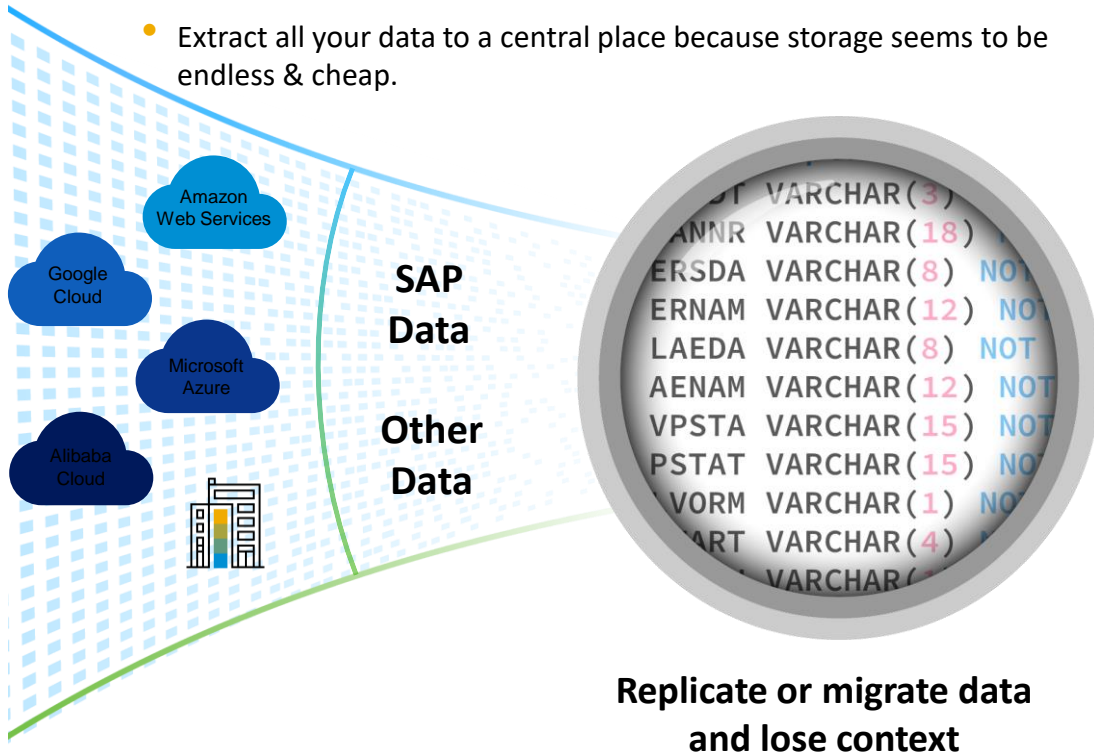


... How to get
results faster?

Connect Data with Business Context

Typical Approach

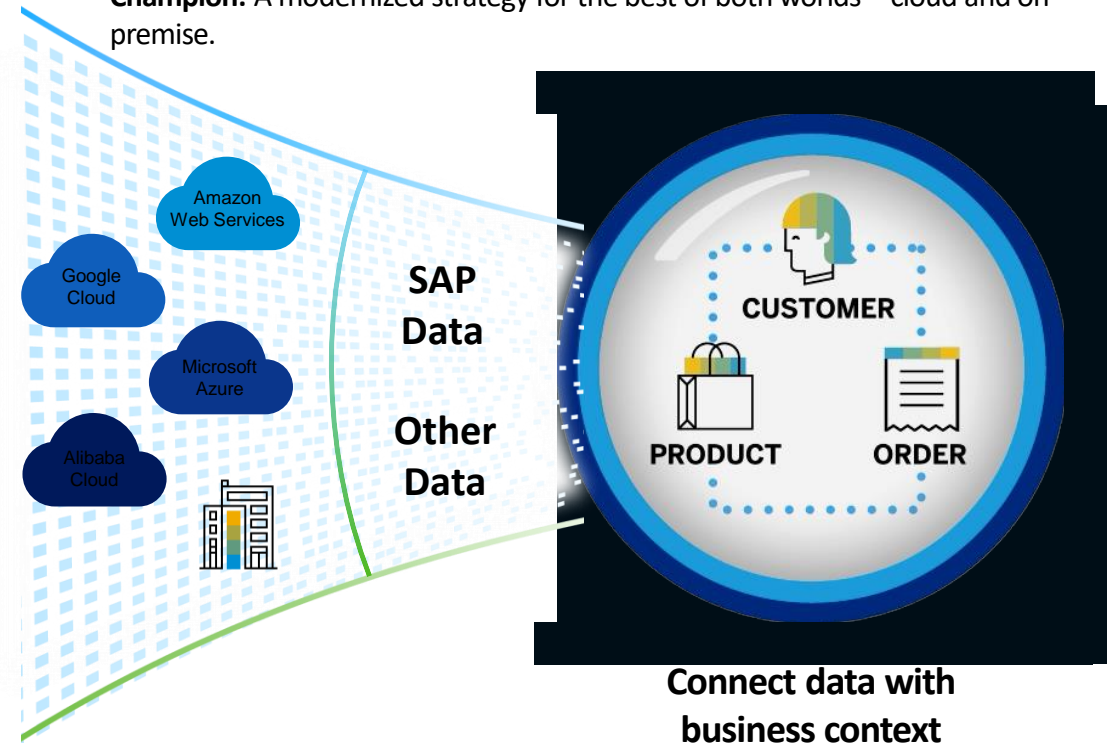
- Missing central integration and semantics layer for all the different sources.
- Data insights are slow and inaccurate. No collaboration between IT and business users.
- Extract all your data to a central place because storage seems to be endless & cheap.



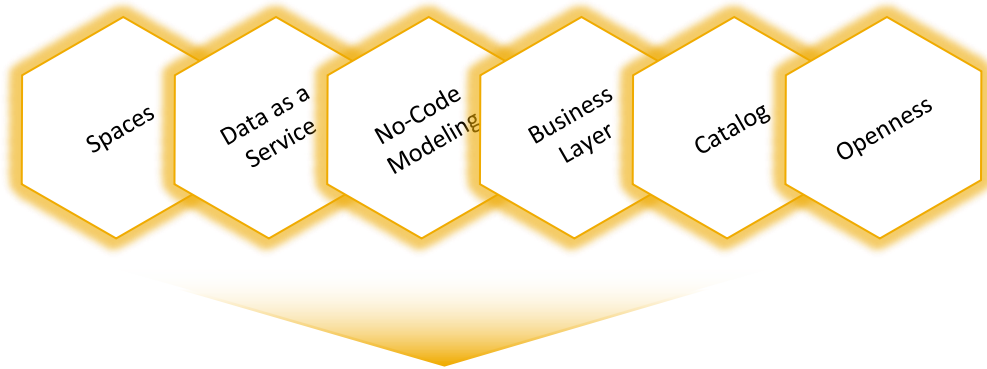
VS

SAP's Unified Data and Analytics

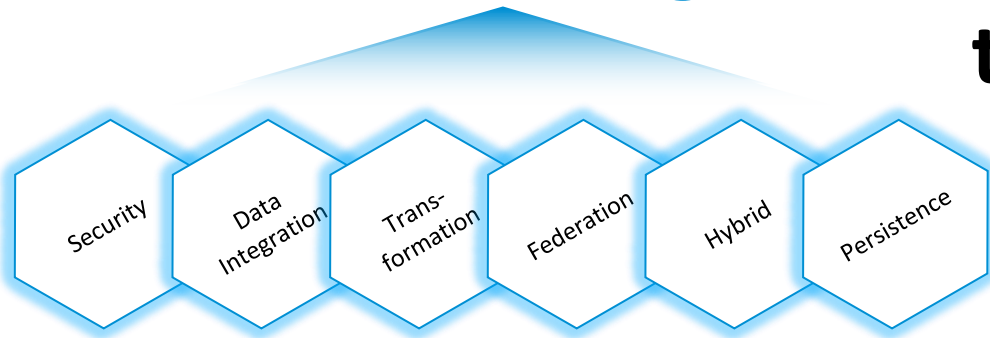
- **Unite:** Get an out-of-the-box view of all data – SAP or Non-SAP.
- **Trust:** Gain easy to understand insights based on a unified data model and established business context – fast.
- **Champion:** A modernized strategy for the best of both worlds – cloud and on-premise.



How **SAP Data Warehouse Cloud** can help

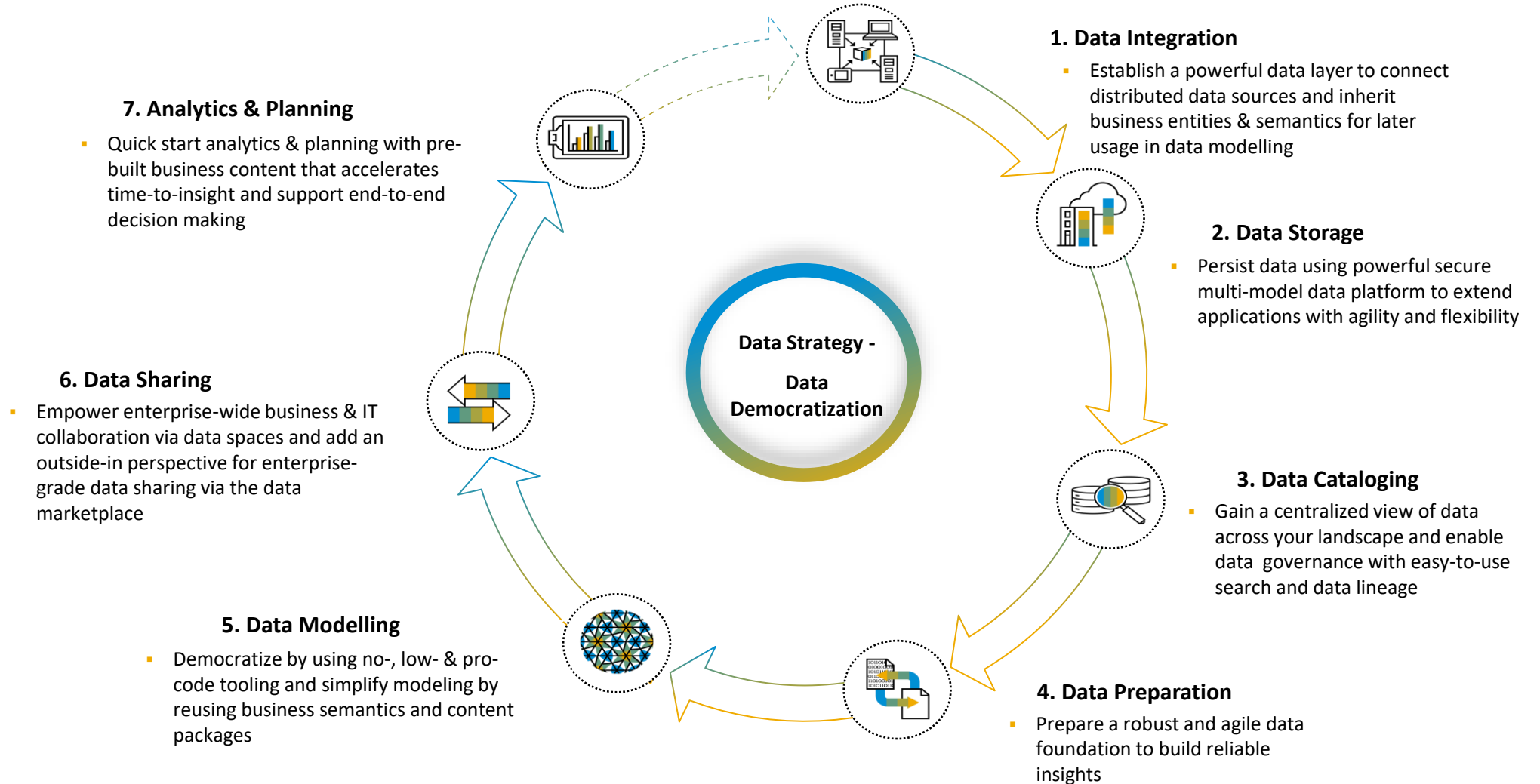


SAP Data Warehouse Cloud goes beyond classical Data Warehousing and brings IT and Business together



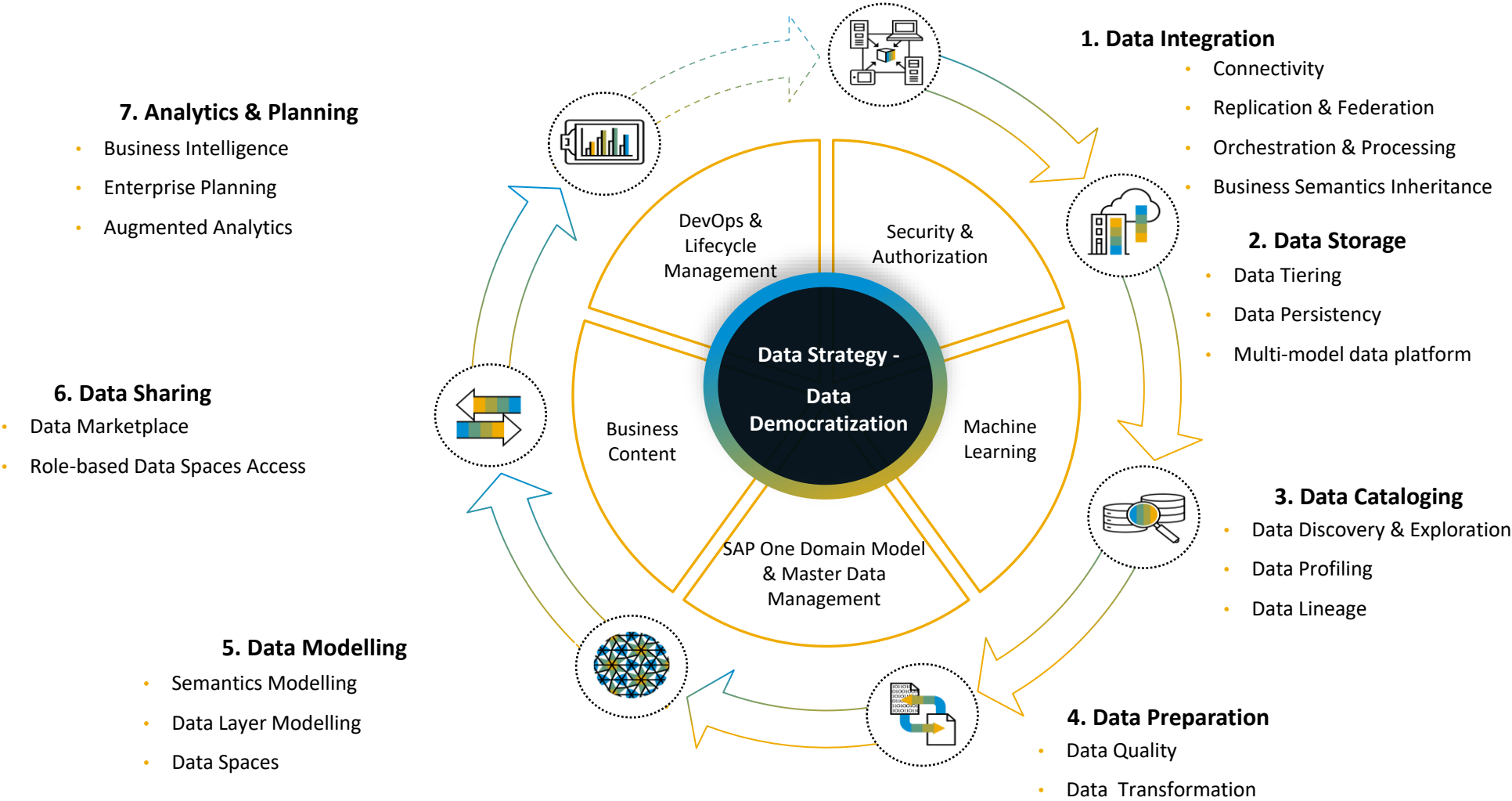
Data-to-Value Solution Path

Data Democratization: Bring Autonomy and Value to the Entire Business

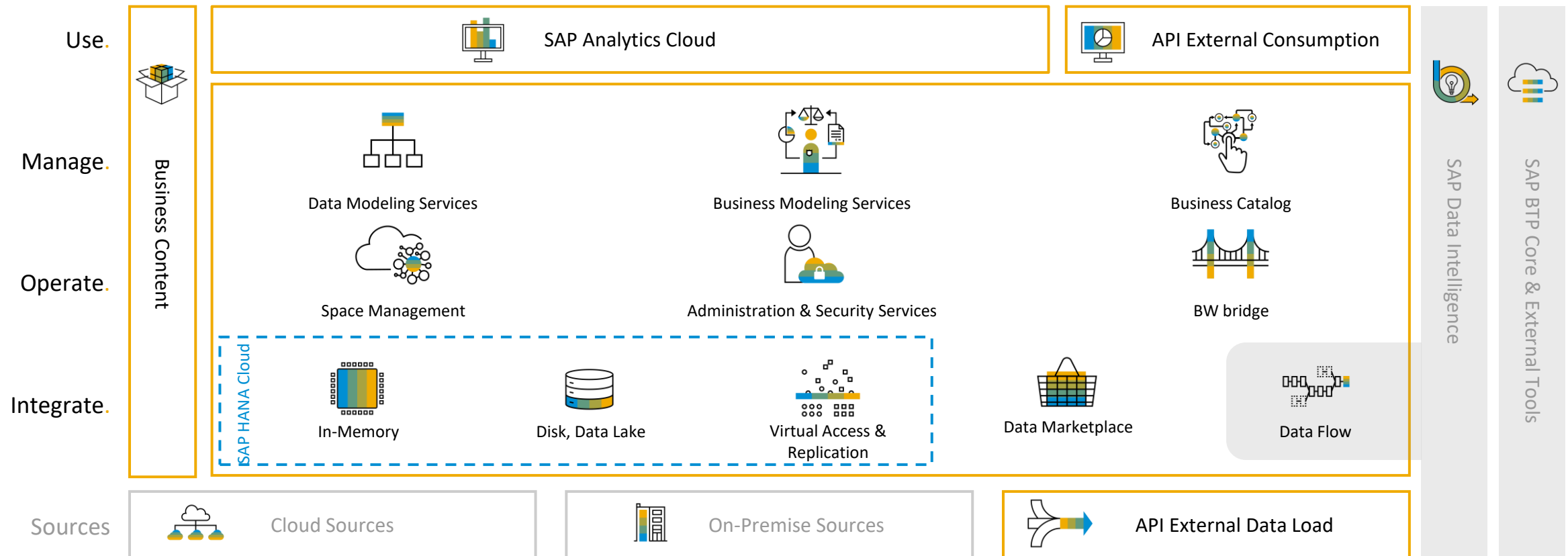


Data-to-Value Solution Path

Data Democratization: Bring Autonomy and Value to the Entire Business



SAP Data Warehouse Cloud. Architecture



Provide your users an end-to-end view of their data landscape that is trusted, secure, and actionable