



# Quality Engineering Platform

Rick Brown, Account Manager  
Colin McGandy, Country Manager



# Agenda

- Who is Tricentis
- SAP and Tricentis SOLEX Relationship
- Delivering Quality at Speed
- Available Resources

# Tricentis

The continuous testing market leader with Agile test management and advanced test automation optimized to support over 160+ technologies

## Results



**10X**  
Test Speed  
Increase



**40%**  
Lower  
Costs



**>90%**  
Risk  
Coverage

## Partners

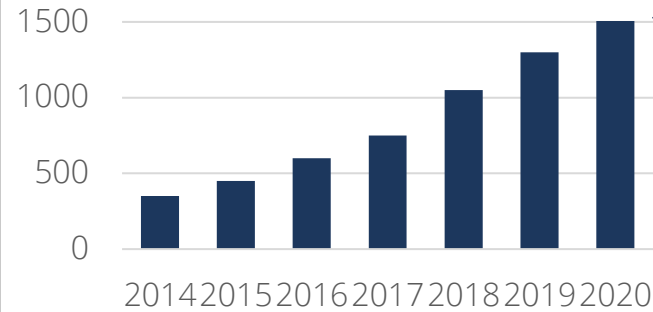


## Tech Alliances

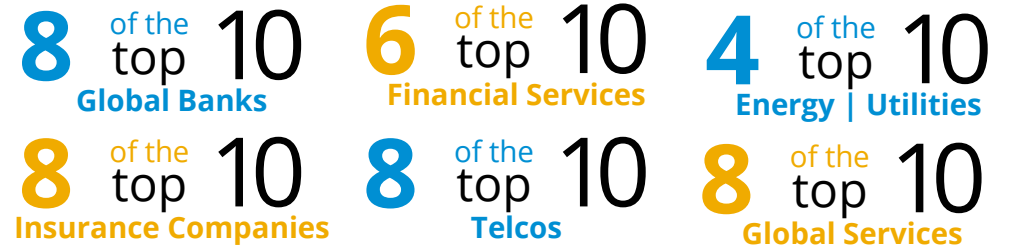


- 2021 **Neotys** Acquisition  
*Performance Testing*
- 2020 **SAP Partnership**  
*Vision AI*
- 2019 **LiveCompare** Acquisition  
*Impact Analysis*
- 2018 **QASymphony** Merger  
*Test Management*
- 2017 **Q-up** Acquisition  
*Test Data*
- 2017 **Flood** Acquisition  
*Load Testing*
- 2016 **Insight Venture Partners** Investment
- 2007 **Founded**

## Customers



Greater than  
**2,500+**  
Customers  
Worldwide



## Analyst Recognition



Gartner



FORRESTER

# Why **SAP** Chose **Tricentis** as Its **Official** Testing Solution

## Tricentis-SAP Partnership Value

Partnership OEM | Product Reselling | Co-Development | Premium Support

### The Global Leader in Enterprise Testing Solutions

- Leader in Gartner Magic Quadrant
- Proven Results in the World's Biggest Brands
- Versatile Platform for Customers at Any Stage of SAP Modernization

### Enterprise-Grade Platform for SAP Testing and Beyond

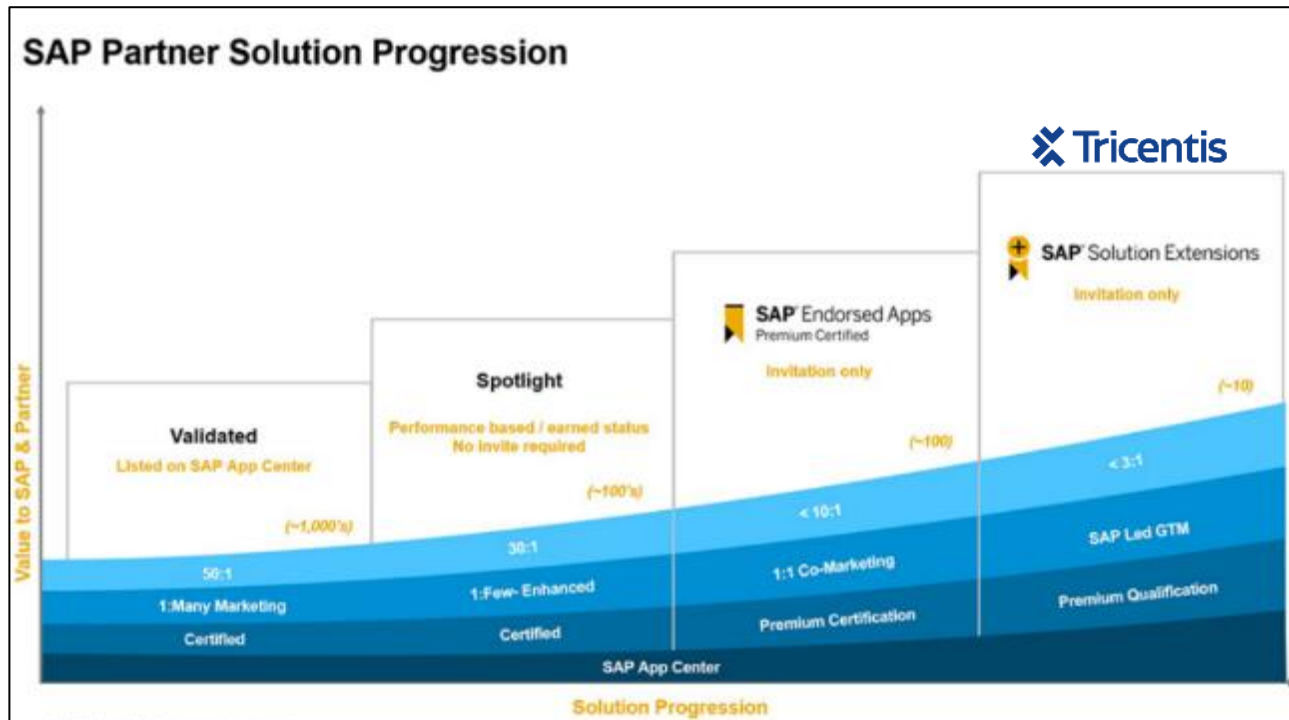
- Model-Based Automation for Resiliency and Scalability
- Risk-Based Approach That Minimizes Business Downtime
- Seamless Integrations for SAP and Non-SAP Testing

### Modern, AI-Driven Technology for Easy Adoption

- AI-driven Impact Analysis for Fast, Safe Changes
- Cloud-Based Architecture
- No-Code, Business Friendly Platform for Easy Adoption

# Tricentis is an SAP Solution Extension (SOLEX) Partner

Highest level of Partnership within SAP



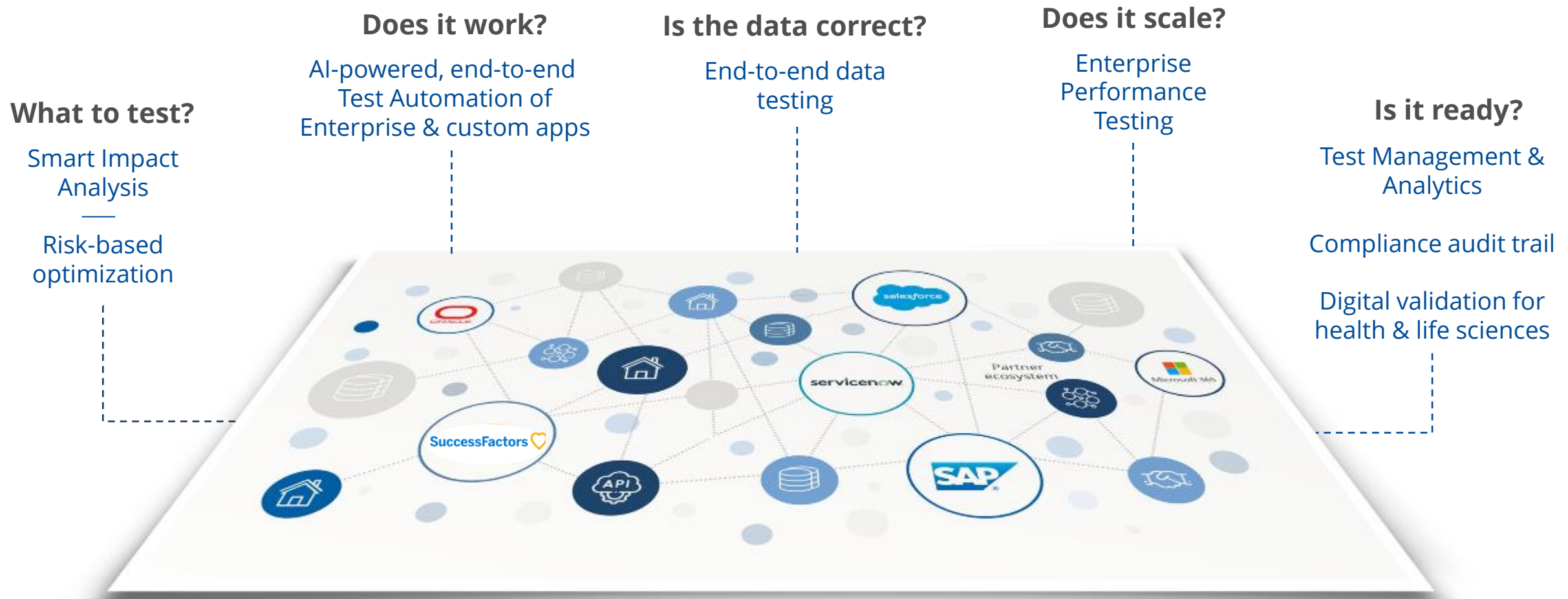
## SAP Solution Extensions

- **Highest level** of SAP software partnership
- **SAP Premium Qualification (PQ)** ensures that product quality is same as SAP products
- **Long-term** roadmap planning and joint development
- **Only ~10 partners** "actively" managed in the SOLEX program – **SAP will focus on Top 3 only**

Critical Customer Value | Long-Term Outlook  
Joint Roadmap Planning

# Deliver High-Quality Applications at Speed

All the Capabilities You Need





# Deliver High-Quality Applications at Speed

All the Capabilities You Need

## What to test?

Smart Impact  
Analysis

Risk-based  
optimization

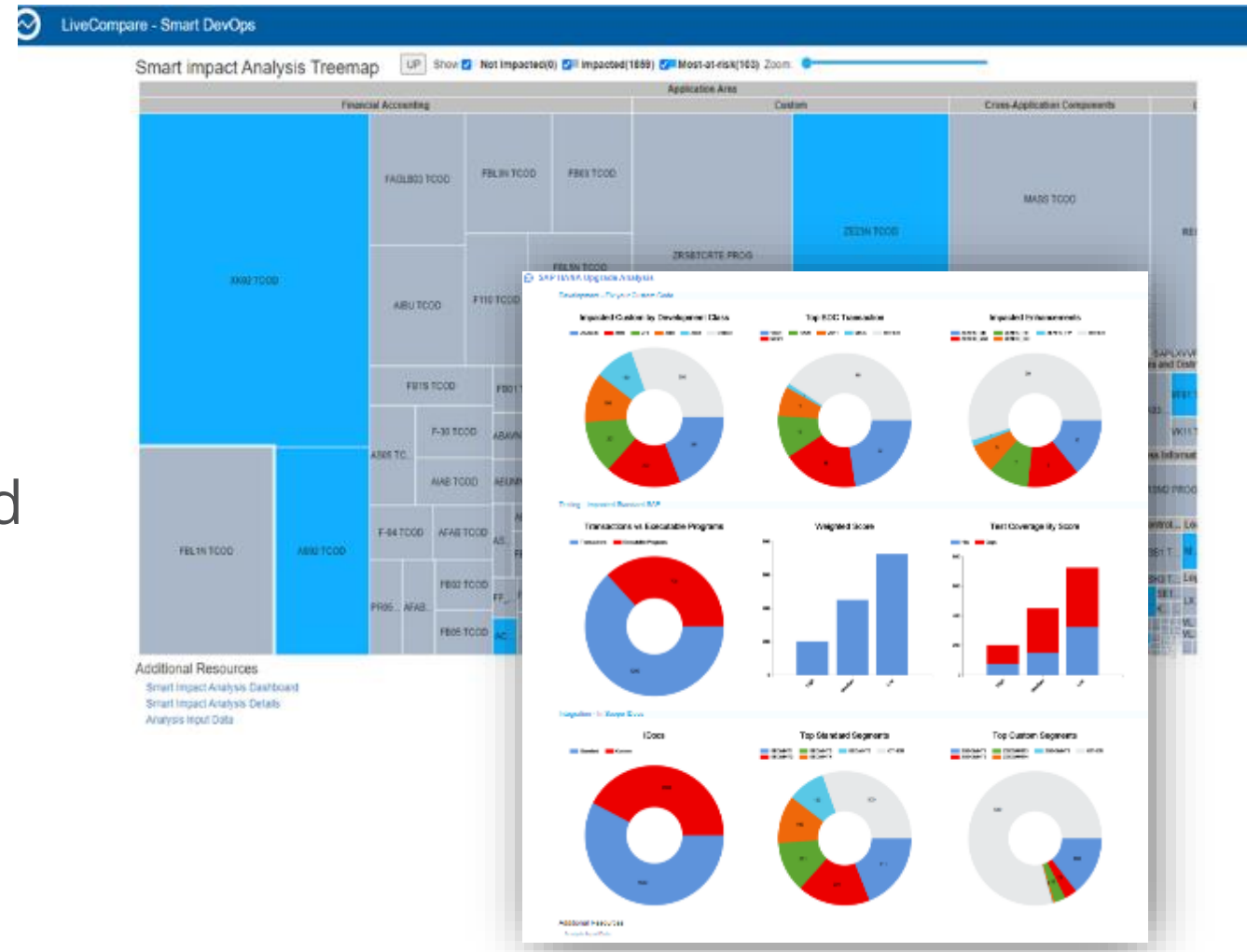


# SAP Change Impact Analysis (CIA)

Tricentis LiveCompare

SAP Change Intelligence that lets your teams deploy with confidence:

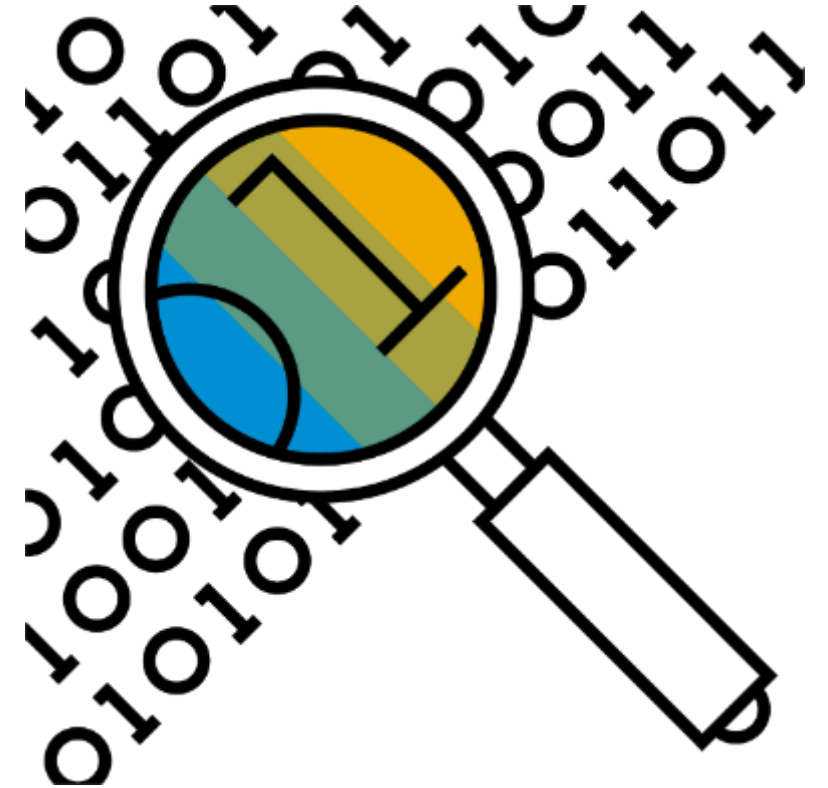
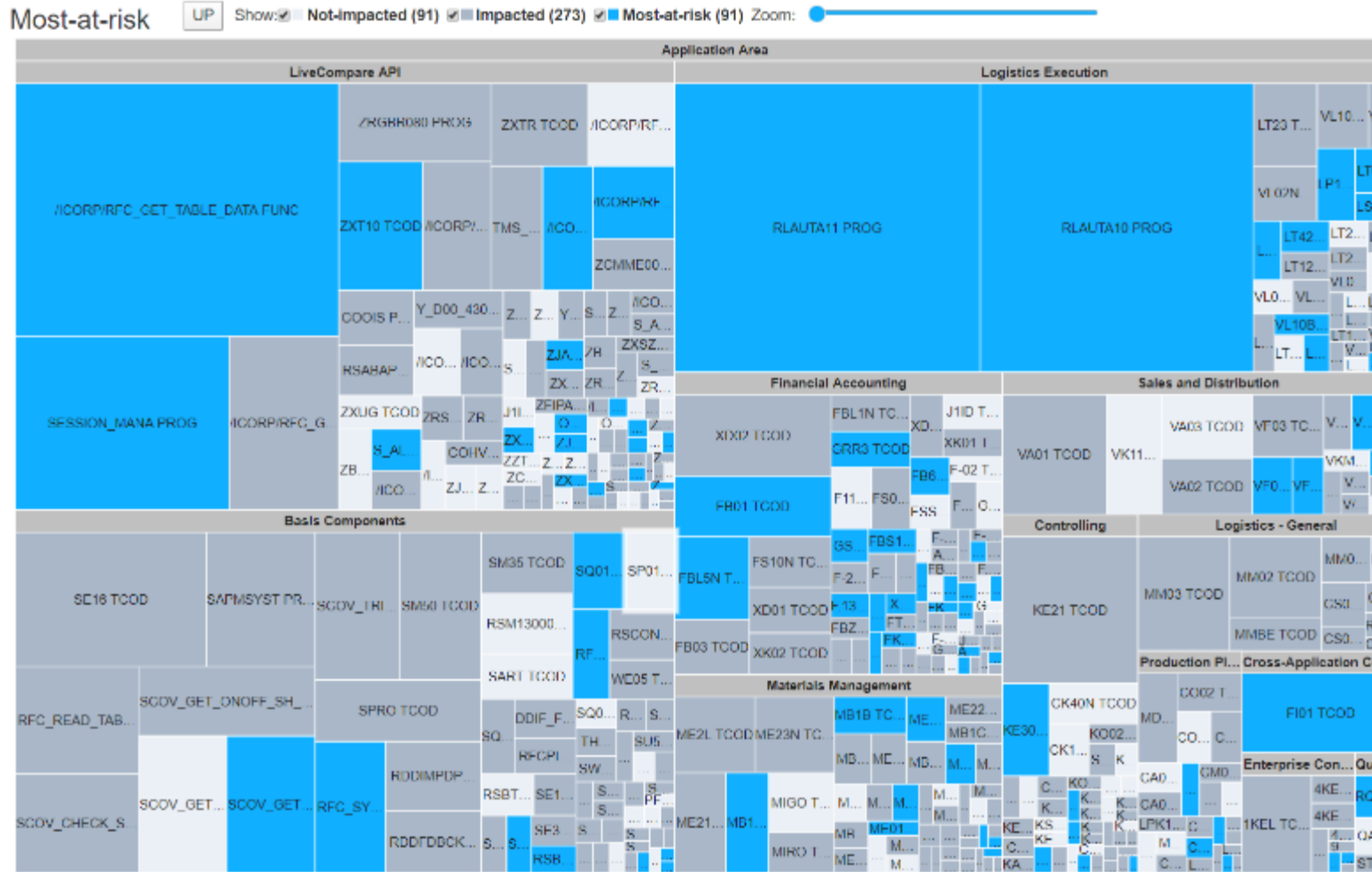
- **Automated** analysis of your SAP landscapes
- **AI-powered** risk identification and test optimization
- **Actionable** insights that prevent production defects





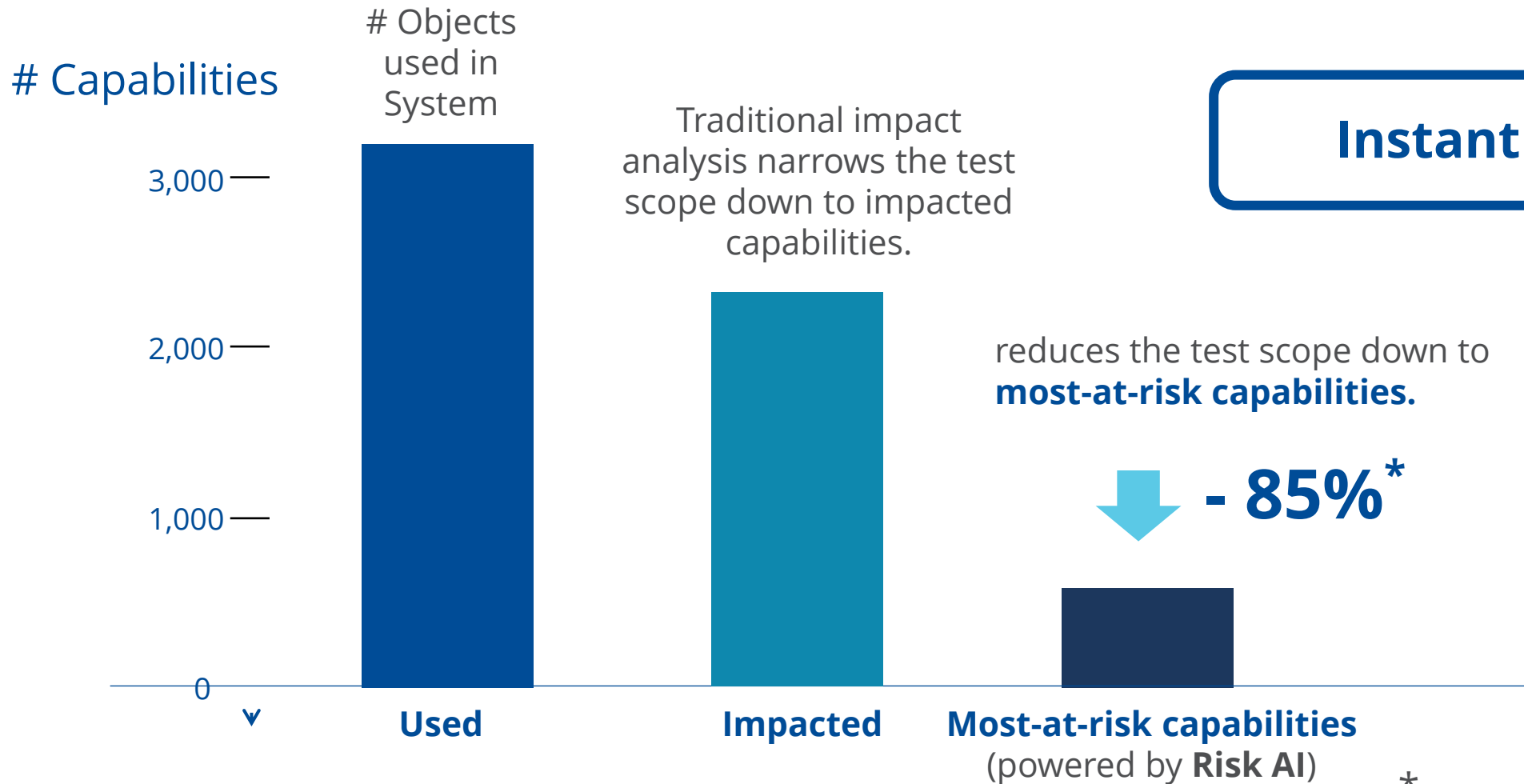
# Most-at-Risk Capabilities

Visualize Your Focus for Testing!



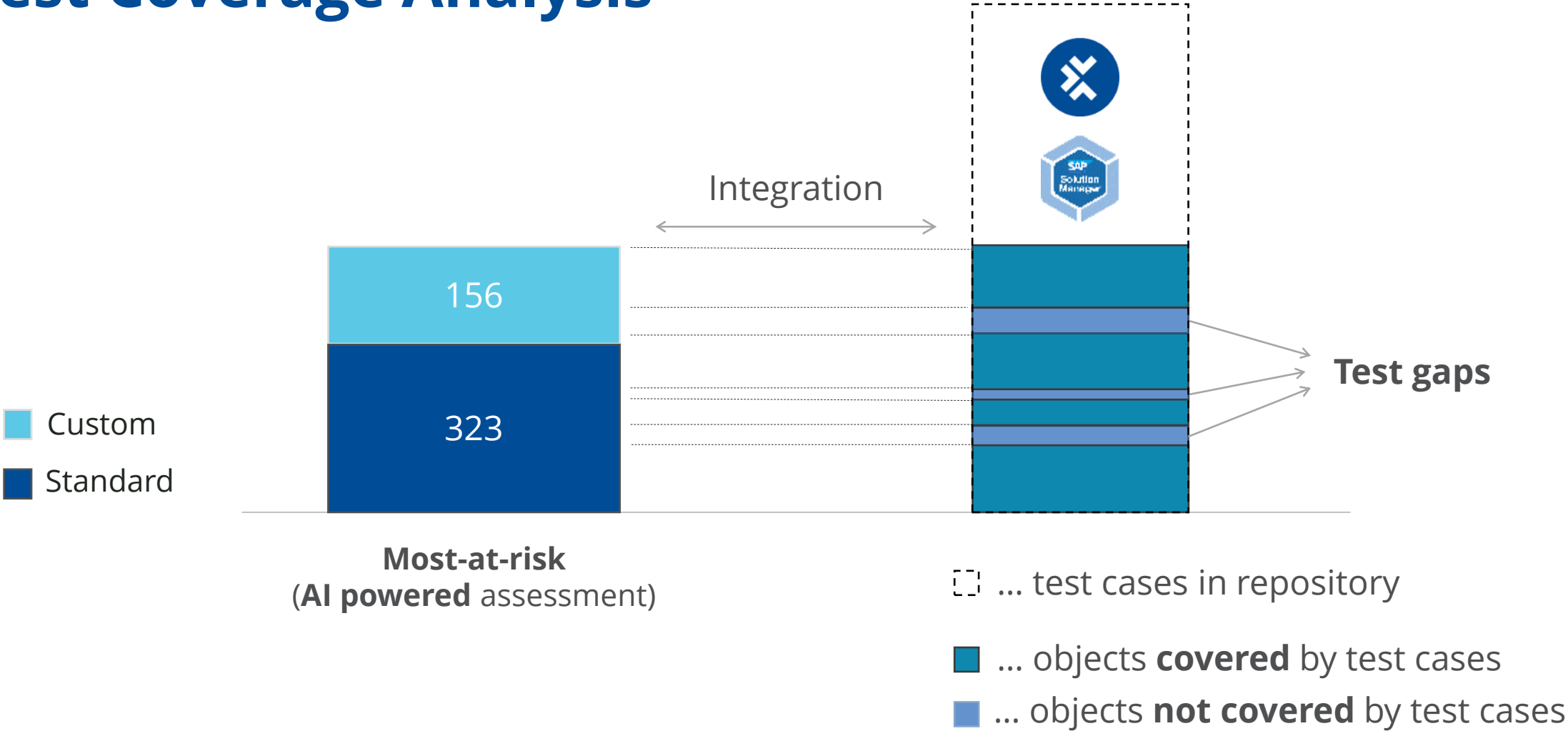
Change Impact Analysis is the **bird's eye view** identifying application areas that are **most-at-risk** from an update

# Test Scope Reduction



\* Findings from Tricentis customer research

# Test Coverage Analysis



# AI-Powered Insights

## ABAP Code Quality Analysis



- Shift left on quality
- Pinpoint coding issues early on SDLC
- Instant feedback for developers
- Data driven insights for commit approvals
- Governance over partner led development work
- Improved SAP application health
- Less production defects

## Smart Impact Analysis



- Intelligent targeted testing
- 80% reduced testing efforts
- Faster test cycles
- Speeds up release cadences 2-3X
- Superior quality

## SAP Test Coverage Insights



- Clear insights into test coverage in every release
- Prioritize time, resources and money in appropriate areas
- Track test coverage trends and monitor progress
- Eliminate duplicate test work
- Maximize ROI in test automation solutions

## Test Audit



- Quality gate for deployment approvals
- Instant feedback for release managers
- improved business continuity
- Zero defect leakage

## N+1 Transport Merge Comparison



- Perform Transport merges 80% faster
- Auto discover code and config conflicts for retrofitting
- Eliminate manual analysis & investigative work
- Deliver projects & releases faster
- De-risk transport merges

## SAP Custom Code Management Insights



- Continuous visibility into custom code  
Manage, govern, optimize customizations
- Track trends and KPI's around custom code
- Eliminate Technical debt

## SAP Root-Cause Analysis



- Debug Prod issues 80% faster
- Less resource involvement
- Minimize production downtime
- Improved business continuity

## SAP System Synchronization



- Ensure code, config & data stays in sync
- Avoid defects caused by system discrepancies
- Reduced need for system refreshes
- Test data validation

## S/4 Readiness Assessment



- Compare existing ECC to target S/4
- Key insights to plan, scope and strategize
- Identify impact & test scope
- Retire dormant custom code
- Improve quality & performance of existing code
- Remediate existing code to be S/4 ready

# Deliver High-Quality Applications at Speed

All the Capabilities You Need

## What to test?

Smart Impact Analysis

Risk-based optimization

## Does it work?

AI-powered, end-to-end  
Test Automation of  
Enterprise & custom apps

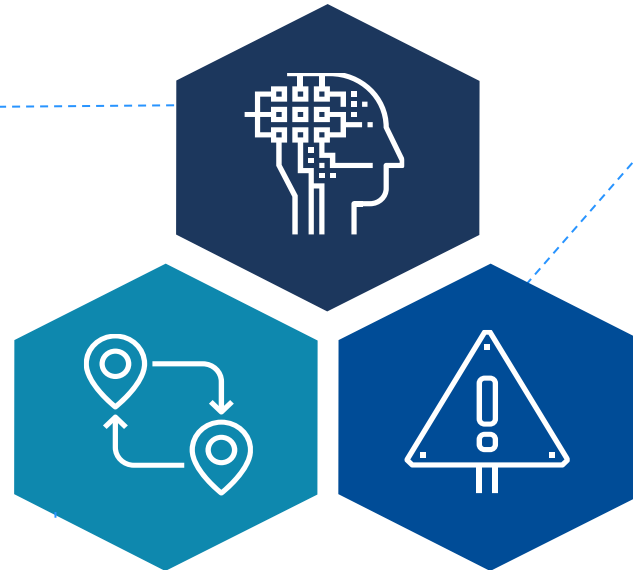


# SAP Enterprise Continuous Testing (ECT)

Tricentis Tosca

## NO CODE / AI-POWERED

Build resilient, reusable and future-proof **test automation** without having to maintain tests as applications evolve



## RISK OPTIMIZATION

Reduce the risk in your software releases while prioritizing testing for **business-critical functionality** – with much fewer tests

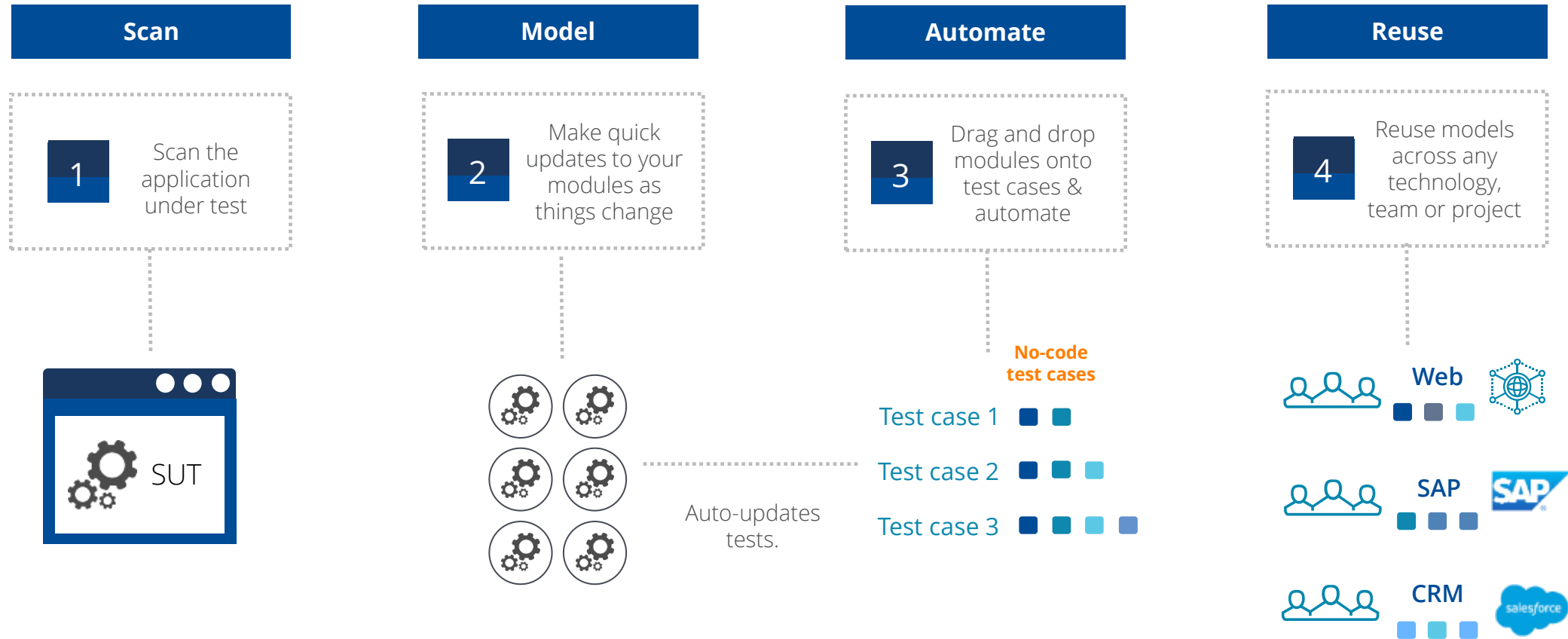
## END-TO-END COVERAGE

Execute tests at the UI, API and data layer – Tosca supports **170+ technologies** and enterprise applications



# Model-Based Test Automation – How It Works

Create and maintain no-code, reusable test assets at scale



# Example: Webpage

Menu

Search

Sign-in FR

Budget 2023

Today March 20, 2023

- Ben Franklin Place Skating Rink Is...
- Wedding Advisory
- No winter weather parking restrictions
- Rink of Dreams Is open

Show all

**Parking, roads, and travel**  
pay your ticket, road and sidewalk maintenance, parking permits...

**Recreation and culture**  
registration and drop-in activities, swimming, skating, culture, fitness, sport...

**Jobs with the City**  
search for jobs, create and update profile...

**Garbage and recycling**  
collection calendar, waste explorer, get a

**Planning, development and construction**

**City Hall**  
mayor and councillors, budget, public

## Sample Module

City	Nav Links	
	Parking, roads, and t...	
	Recreation and cultu...	
	Garbage and recycling	
	Planning, developm...	
	City Hall	
	Jobs with the City	
Search Jobs		
	Search current oppo...	
	Search Button	

## Test Case

- TC 1 Smoke -Custom
  - Launch website
    - Navigate to website
    - Maximize Window
    - Wait 1 Second
    - Take Screenshot
  - Process
    - City Nav Links
    - Search Jobs
  - Post Condition
    - Wait 2 seconds
    - Close Browser

# Results and Reporting - Smoke Test

## Results

1 Custom TC						1
TC 1 Smoke -Custom						
20.03.23 15:50:06	Executing on 'Chrome', Br...	20.03.23 15:5...	00:31.485			
Navigate to w...		20.03.23 15:5...	00:00.049			
Maximize Win...		20.03.23 15:5...	00:04.238			
Wait 1 Second	Waited for >5000< millise...	20.03.23 15:5...	00:05.009			
Take Screenshot	The screenshot was succ...	20.03.23 15:5...	00:00.065			
City of Ottawa ...		20.03.23 15:5...	00:15.582			
Search Jobs		20.03.23 15:5...	00:04.484			
Wait 2 seconds	Waited for >2000< millise...	20.03.23 15:5...	00:02.004			
Close Browser		20.03.23 15:5...	00:00.003			

## PDF Report

### Smoke Test

✓ TC 1 Smoke -Custom **PASSED**

Started: 3/20/2023 3:50:06 PM Executed by Admin  
 Ended: 3/20/2023 3:50:37 PM

Name	Value	Action	Loginfo
✓ Navigate to website			
✓ Maximize Window			
✓ Operation	Maximize	Input	Operation 'Maximize' has been performed successfully on window with caption 'City of Ottawa'.
✓ Wait 1 Second			Waited for >5000< milliseconds.
✓ Take Screenshot			The screenshot was successfully created.
✓ City of Ottawa Nav Links			
✓ Parking, roads, and travel	{MOUSEOVER}	Input	
✓ Recreation and culture	{MOUSEOVER}	Input	
✓ Garbage and recycling	{MOUSEOVER}	Input	
✓ Planning, development and construction	{MOUSEOVER}	Input	
✓ City Hall	{MOUSEOVER}	Input	
✓ Jobs with the City	{Click}	Input	
✓ Search Jobs			
✓ Search current opportunities:	Testing	Input	
✓ Search Button	{Click}	Input	
✓ Wait 2 seconds			Waited for >2000< milliseconds.
✓ Close Browser			
✓ Operation	Close	Input	Operation 'Close' has been performed successfully on window with caption "City".

# Supports All **SAP** UIs and APIs



**SAP** UIs

**SAP** WinGUI

**SAP** Netweaver

**SAP** Business Client

**SAP** Fiori

**SAP** on Mobile

**SAP** S/4HANA

**SAP** APIs



oDATA

RFC

SOAP RFC

IDOCs

REST

HTTP(S)/JSON/XML

# Supports All Cloud Solutions



## SAP SuccessFactors

Details	Test configuration	Name	Value
SuccessFactor Demo			
Create Position and New Recruitment			
Login_Reference			
OpenUrl			
Url			https://salesdemo.
Login			
Enter the Input Data			
Enter Data to be Used			
ManagerID			Geoff Hill
SearchPerson			Maykala Chapman
Create Position			
GoTo Position Org Chart			
Wait on Till screen loads			
Click on Home Button			
Home Button			{Click}
Click on Home DropDown			
Click on Org Chart			
Click on Position Org Chart			
Search By Employee Name			
Create New Position			
New Recruitment			
Click on Add New Employee			
Add New Employee			{Click}
Enter Values for Recruitment			
Enter Company Name			
Enter Event Reason			
Enter First Name Last Name			
Enter Date of Birth			
Enter Country of Birth			
Enter National ID details			
Enter Personal Info Data			
Enter Email Information			
Enter Job Info			
Enter Compensation Information			
Verify New Employee is created			

## SAP Concur

Details	Test configuration	Control Flow Diagram	Name	Value
Create New Reservation				
Connect to Corporate Traveller				
OpenUrl_Reference				
Client Portal Login				
Corporate Traveller				
Search Concur for Flights				
Set flight info				
From				MCO
To				LAX
Concur Home				
Hello				Exists == True
One Way				{Click}
From				{B[From]}(TAB)
To				{B[To]}(TAB)
fltDate0				07/07/2018
timeSideSet0				depart
fltTime0				09:00 am
windowBeforeSet0				± 3
Search				{Click}
Wait for Search Results				
Select United and validate airport codes				
View, Validate and Select Fares				
View Fares				
Provide screenshot of flight choices				
Select Fare				
Concur: Flight   Review and Reserve				
Flight Table				
\$header				
DEPART Sat, Jul 7 – Orlando, FL ...				*{B[From]}*{B[

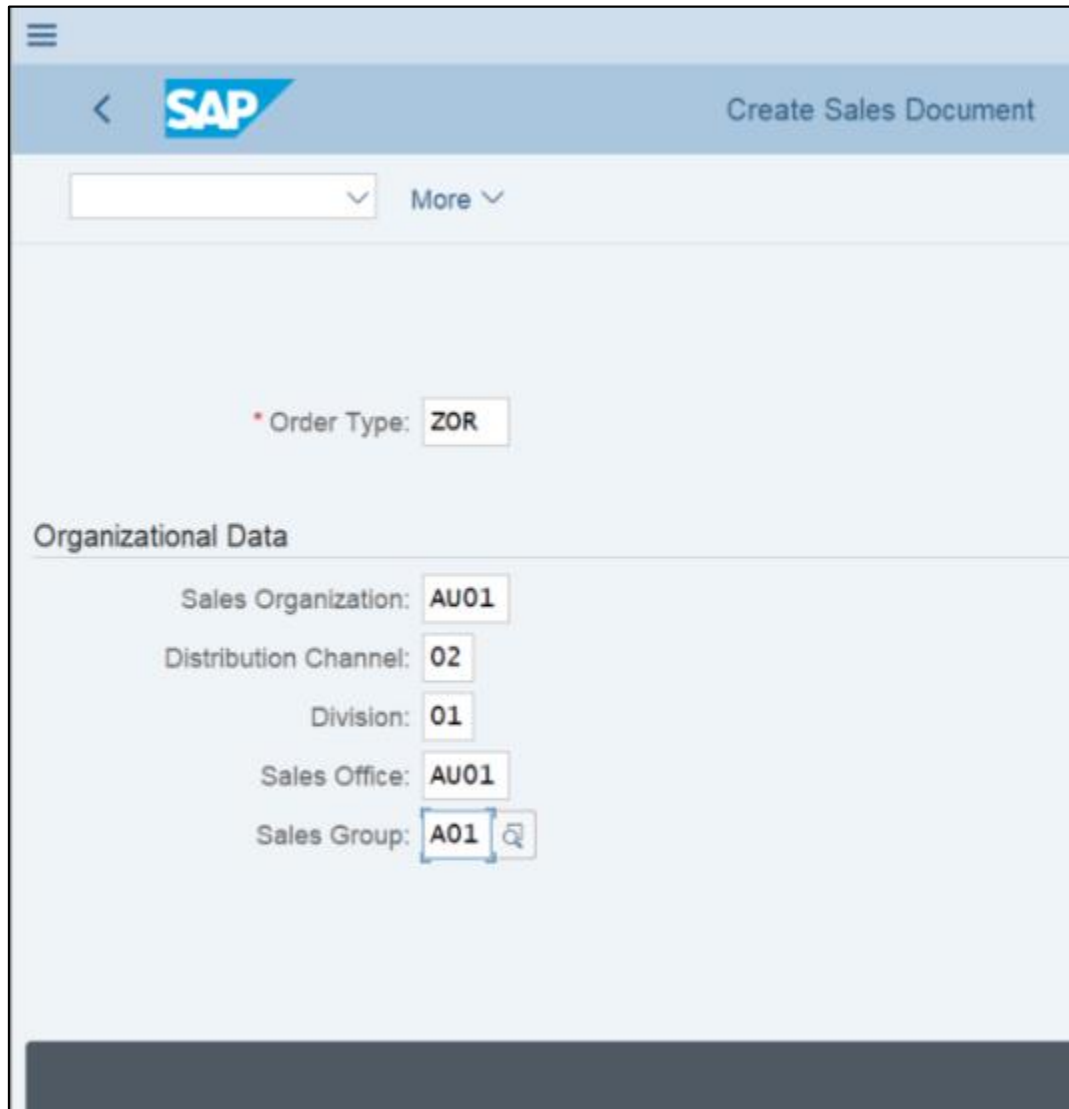
## SAP Hybris

Details	Test configuration	Control Flow Diagram	Name	Value
C4C - PreSales Cycle				
Login				
Create Customer				
Set Customer Name				
C4CUSState				AA
C4CIncoTermsLoc				San Francisco Bay Dockyard
C4CCustNo				{RND[4]}_{RANDOMTEXT[3]}Cust
Go to Customer				
Customers				X
Wait for page to load				
New				Exists == True
Click on New Button				
New				{Click}
Customers - SAP Hybris Cloud for Customer				
Name:				{B[C4CCustNo]}
ABC Classification:				A-Account
State:				{Click}
Wait for State to be loaded				
Enter State				
Keys				{B[C4CUSState]}
Wait for dropdown to be loaded				
Select State from Dropdown				
Click on Save				
Save				{Click}
Wait for Customer creation				
Click on Refresh				
Refresh				{Click}
Wait for page refresh				
Verify Customer Created				
Accounts table				
Start				

## SAP Ariba

Details	Test configuration	Control Flow Diagram	Name	Value	ActionMode
End-to-End Case im Einkauf					
ARIBA					
Ariba   User 1					
Open Ariba Guided Buying and Login   rwagner					
Erfassung Request					
Request Ad hoc item					
Ariba Guided Buying   Request ad hoc item					
Request ad hoc item				{Click}	Input
Request ad hoc item   Product name + Category					
Product name				Tastatur	Input
Category				{Click}	Input
Hardware				{Click}	Input
Request ad hoc item   Quantity, Unit price					
LanSoft Technologies				Visible == True	WaitOn
LanSoft Technologies				{CLICK}	Input
Description				Tastatur German	Input
Quantity				1	Input
Unit price				25	Input
Add to cart				{Click}	Input
Checkout					
Logout					
Ariba   Admin					
Open Ariba Guided Buying and Login   Admin-Oberfläche					
Workflow anpassen   Genehmiger löschen					
Logout					
Ariba   Supervisor					
Open Ariba Guided Buying and Login   Supervisor					

# Create Sales Order: VA01 Initial Screen



Order Type: **ZOR**

**Organizational Data**

Sales Organization: **AU01**

Distribution Channel: **02**

Division: **01**

Sales Office: **AU01**

Sales Group: **A01** 🔍

Create Sales Order: Initial Screen	
Order Type	GAOR; KB; OR; ZOR
Sales Organization	3010; AU01; GABC; TRC
Distribution Channel	01; 02
Division	AU01
Sales Office	AU01; AU02
Sales Group	AU01



# Create Sales Order: VA01 Overview

Name	ValueRange
<ul style="list-style-type: none"> <li> <ul style="list-style-type: none"> <li>Order Type</li> <li>Sales Organization</li> <li>Distribution Channel</li> <li>Division</li> <li>Sales Office</li> <li>Sales Group</li> </ul> </li> </ul>	<ul style="list-style-type: none"> <li>GAOR; KB; OR; ZOR</li> <li>3010; AU01; GABC; TRC</li> <li>01; 02</li> <li>AU01</li> <li>AU01; AU02</li> <li>AU01</li> </ul>
<ul style="list-style-type: none"> <li> <ul style="list-style-type: none"> <li>Standard Order</li> <li>Net value</li> <li>Currency</li> <li>PO Number</li> <li>PO date</li> <li>Display doc. header details</li> <li>Sold-To Party</li> <li>Create Sold-To Party</li> <li>Ship-To Party</li> </ul> </li> </ul>	<ul style="list-style-type: none"> <li>{Click};{Doubleclick};{Rightclick}</li> <li>{Click};{Doubleclick};{Rightclick}</li> <li>{Click};{Doubleclick};{Rightclick}</li> <li>{Click};{Doubleclick};{Rightclick}</li> <li>{Click};{Doubleclick};{Rightclick}</li> <li>{Click}</li> <li>{Click};{Doubleclick};{Rightclick}</li> <li>{Click}</li> <li>{Click};{Doubleclick};{Rightclick}</li> </ul>

# Create Sales Order: Overview (Enter Material/Quantity)

Spectar Std. Order:  Net Value:

Sold-To Party:

Ship-To Party:

Cust. Reference:  Cust. Ref. Date:

Req. Deliv. Date:  Deliver. Plant:

Complete Div.:  Total Weight:

Delivery Block:  Volume:

Billing Block:  Pricing Date:

Pyt Terms:

Inco. Version:

Incoterms:

Inco. Location1:

Item	Material	Req. Segment	Order Quantity	First Date	Un	S	Item Description
<input type="checkbox"/>	1000000000		2	31.08.2020			
<input type="checkbox"/>				31.08.2020			

Details	
Name	ValueRange
<ul style="list-style-type: none"> <li> <ul style="list-style-type: none"> <li>Order Type: GAOR; KB; OR; ZOR</li> <li>Sales Organization: 3010; AU01; GABC; TRC</li> <li>Distribution Channel: 01; 02</li> <li>Division: AU01</li> <li>Sales Office: AU01; AU02</li> <li>Sales Group: AU01</li> </ul> </li> </ul>	
<ul style="list-style-type: none"> <li> <ul style="list-style-type: none"> <li>Standard Order: {Click};{Doubleclick};{Rightclick}</li> <li>Net value: {Click};{Doubleclick};{Rightclick}</li> <li>Currency: {Click};{Doubleclick};{Rightclick}</li> <li>PO Number: {Click};{Doubleclick};{Rightclick}</li> <li>PO date: {Click};{Doubleclick};{Rightclick}</li> <li>Display doc. header details: {Click}</li> <li>Sold-To Party: {Click};{Doubleclick};{Rightclick}</li> <li>Create Sold-To Party: {Click}</li> <li>Ship-To Party: {Click};{Doubleclick};{Rightclick}</li> </ul> </li> </ul>	
<ul style="list-style-type: none"> <li> <ul style="list-style-type: none"> <li>All items                             <ul style="list-style-type: none"> <li>&lt;Row&gt;</li> <li>&lt;Col&gt;</li> </ul> </li> </ul> </li> </ul>	

# Building Automation for Enterprise Continuous Testing


Name	Value	ActionMode	DataType
Create Sales Order			
Start Transaction			
Business Process			
Initial Screen			
Create Sales Order: Initial Screen			
Order Type	ZOR	Input	String
Sales Organization	AU01	Input	String
Distribution Channel	02	Input	String
Division	01	Input	String
Sales Office	AU01	Input	String
Sales Group	A01	Input	String
Click Enter			
Enter Header data			
PO Number	Test	Input	String
PO date	DATE	Input	String
Sold-To Party	1000000	Input	String
Click Enter			
Material Data			
Enter Material			
All items		Select	String
\$1		Select	String
Material	1000000000	Input	String
Enter Quantity			

- Standard modules
  - TBox XEngines
    - SAP
      - SAP Logon
      - SAP Login
      - SAP SubToolBar
      - SAP Statusbar
      - SAP Toolbar
        - SAP Toolbar
      - License Information for Multiple Logon
    - TBox Automation Tools
    - Html
    - SAP WinGui
      - SALES & DISTRIBUTION
        - Sales
          - VA11 - Create Inquiry
          - VA21 - Create Quotation
          - VA01 - Create Sales Order
            - Order - Item Overview Tab
            - Create Sales Order: Initial Screen
              - Order Type
              - Sales Organization
              - Distribution Channel
              - Division
              - Sales Office
              - Sales Group
            - Order - Header
          - Header Data
          - Item Data
          - Create Standard Order: Overview

# Success Factors – New Employee Test Case

## Success Factors New Employee Test Case

- └─ Login
  - └─ OpenUrl
  - └─ SuccessFactors Log in
- └─ Validate Admin Center Access
  - └─ Click User Name Menu
  - └─ UserName Menu Items
- └─ Create a New Goal
  - └─ Open Goals
  - └─ Change to 2019 Goals
  - └─ Create a new Goal
  - └─ Select Goal Type
  - └─ Add Goal
  - └─ Validate New Goal
  - └─ Delete Demo Goal
  - └─ Goal Action Box
  - └─ TBox Send Keys
  - └─ Nav Home
- └─ Add New Employee
  - └─ Nav To Add Employee
    - └─ SuccessFactors Dropdown
    - └─ TBox Wait
    - └─ TBox Send Keys
  - └─ Add Employee
    - └─ SuccessFactors:New Employee 1
    - └─ SuccessFactors:New Employee 2
    - └─ Wait for Form to Settle
    - └─ SuccessFactors:New Employee 2
    - └─ SuccessFactors:New Employee 3
    - └─ SuccessFactors:New Employee 4
    - └─ Verify Draft Save
- └─ Logout
  - └─ CloseBrowser

Name	Image
SuccessFactors:New Empl...	
Company	
Company List	
Event Reason	
Event Reason List	
First Name	
Last Name	
Date Of Birth	
Country Of Birth	
Country of Birth List	
Continue	

Create a New Goal			
Open Goals			
My Goals	Click	Input	String
Change to 2019 Goals			
2018 Goal Plan	2019 Goal Plan	Input	String
Create a new Goal			
Add Goal	Create a New Goal	Select	String
Select Goal Type			
Personal Goal	Click	Input	String
Add Goal			
Visibility:	Private	Input	String
* Goal Name	Sell more Tosca	Input	String
* Metric	Happy Customers	Input	String
Status	On Track	Input	String
* %Complete	RND 5   20	Input	String
Save Changes	X	Input	String
Validate New Goal			
Goals Table		Select	String
Goal Name		Select	String
\$2	*Sell more Tosca*	Verify	String
Metric		Select	String

# Sample Successfactors Results and Reporting

## Smoke Test

### Results

### PDF Report

Sanity Check SuccessFactors TC				1
ActualLog				
Success Factors New Employee Test Case				
06.06.23 02:44:55				
OpenUrl				
SuccessFactors Log in				
Username	tricentis1	Input		
Enter Password	*****	Input		
Log in	{Click}	Input		
Click User Name Menu				
Account Navigation for User	{Click}	Input		
UserName Menu Items				
Admin Center	True	Verify	Verification was successful.	
Open Goals			Verification was successful. Expected value == "True" Actual value: "True"	
My Goals	{Click}	Input		
Change to 2019 Goals				
2018 Goal Plan	2019 Goal Plan	Input		
Create a new Goal				
Add Goal	Create a New G...	Select		
Select Goal Type				
Personal Goal	{Click}	Input		

Name	Value	Action	Loginfo
OpenUrl			
SuccessFactors Log in			
Username	tricentis1	Input	
Enter Password	***** ***** ***** ***** ***** **	Input	
Log in	{Click}	Input	
Click User Name Menu			
Account Navigation for User	{Click}	Input	
UserName Menu Items			
Admin Center	True	Verify	Verification was successful. Expected value == "True" Actual value: "True"
Open Goals			
My Goals	{Click}	Input	
Change to 2019 Goals			
2018 Goal Plan	2019 Goal Plan	Input	
Create a new Goal			
Add Goal	Create a New Goal	Select	
Select Goal Type			
Personal Goal	{Click}	Input	
Add Goal			
Visibility:	Private	Input	
* Goal Name	Sell more Tosca	Input	
* Metric	Happy Customers	Input	
Status	On Track	Input	
* %Complete	{RND[5][20]}	Input	
Save Changes	X	Input	
Validate New Goal			
Goals Table	{NULL}	Select	
Goal Name	{NULL}	Select	
\$2	"Sell more Tosca"	Verify	Verification was successful. Expression: "== "Sell more Tosca" Actual value: "Sell more Tosca Edit"
Metric	{NULL}	Select	
\$2	Happy Customers	Verify	Verification was successful. Expected value == "Happy Customers" Actual value: "Happy Customers"

# Deliver High-Quality Applications at Speed

All the Capabilities You Need

## What to test?

Smart Impact Analysis

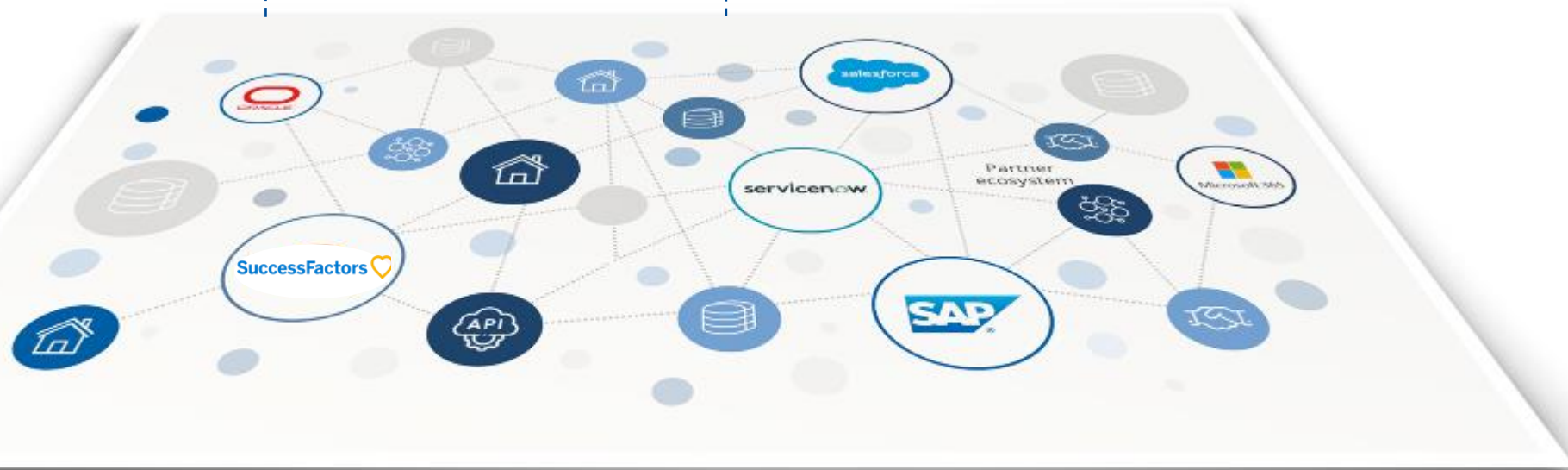
Risk-based optimization

## Does it work?

AI-powered, end-to-end Test Automation of Enterprise & custom apps

## Is the data correct?

End-to-end data testing





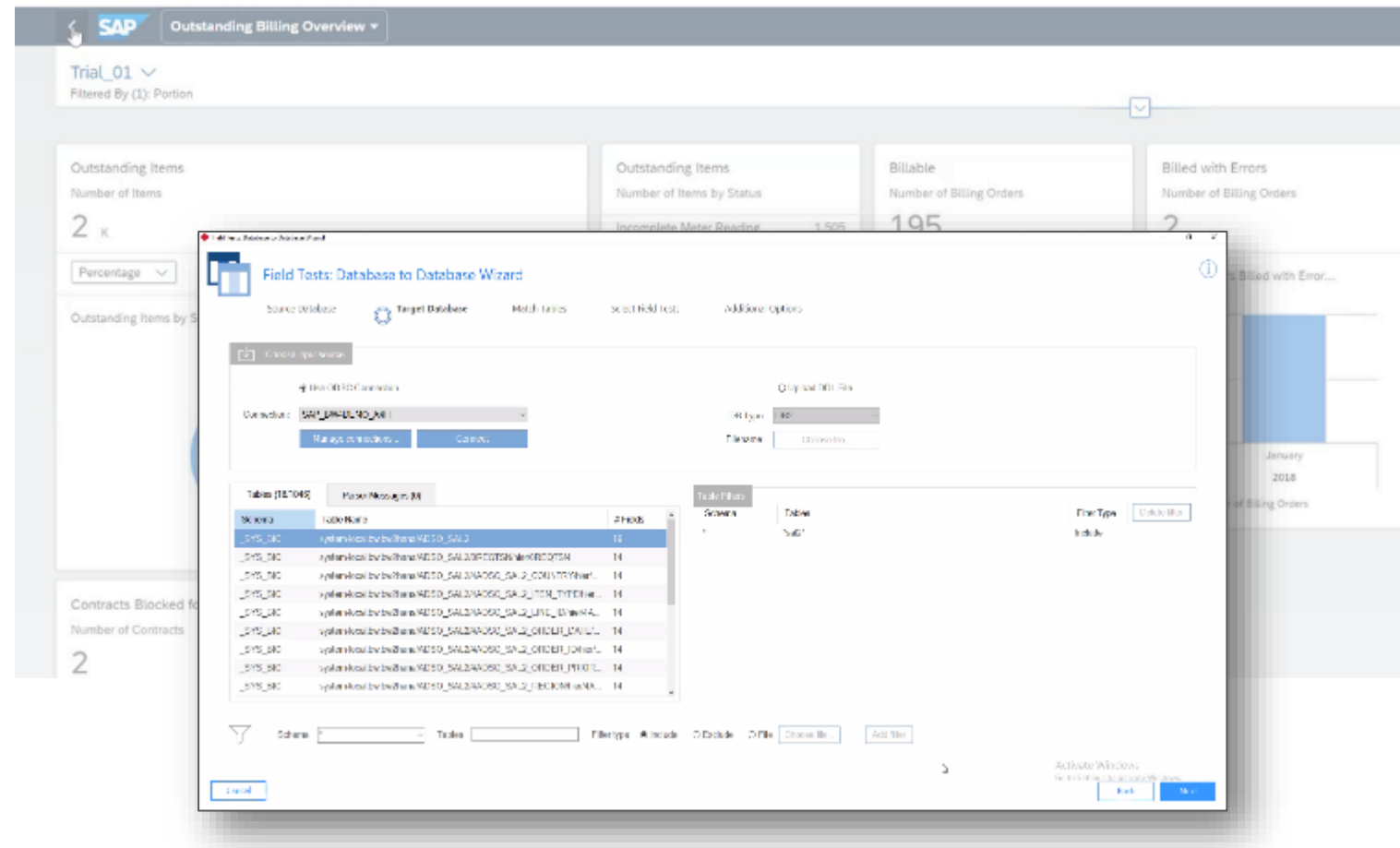
# SAP Enterprise Data Integrity Testing (EDIT)

Tricentis Data Integrity

## Is the data correct?

### Capabilities:

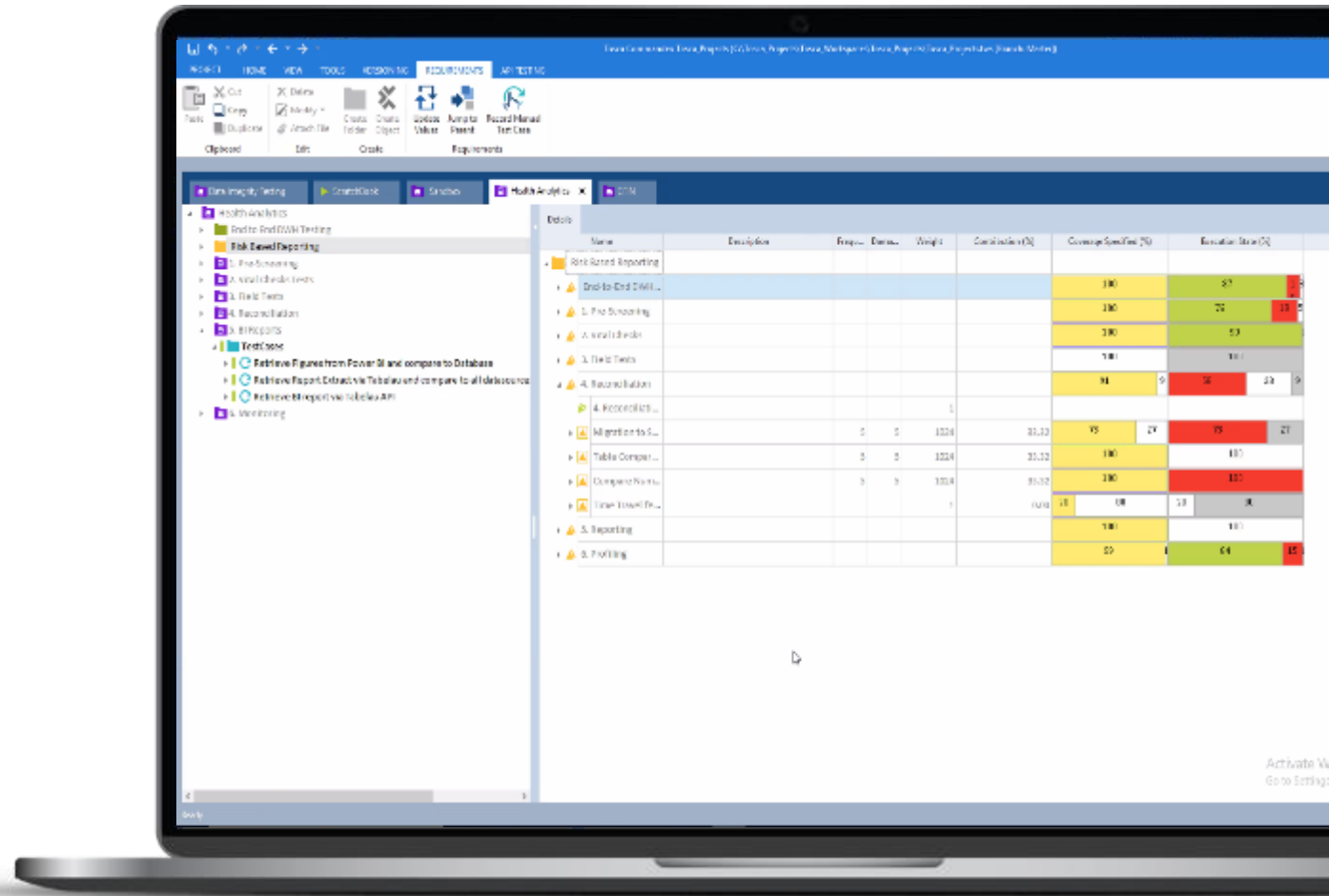
- Comprehensive data testing across SAP and 3rd-party technologies
- Low-code/no-code automation
- Actionable reporting
- Integration with DataOps and DevOps tools



# Comprehensive Data Testing

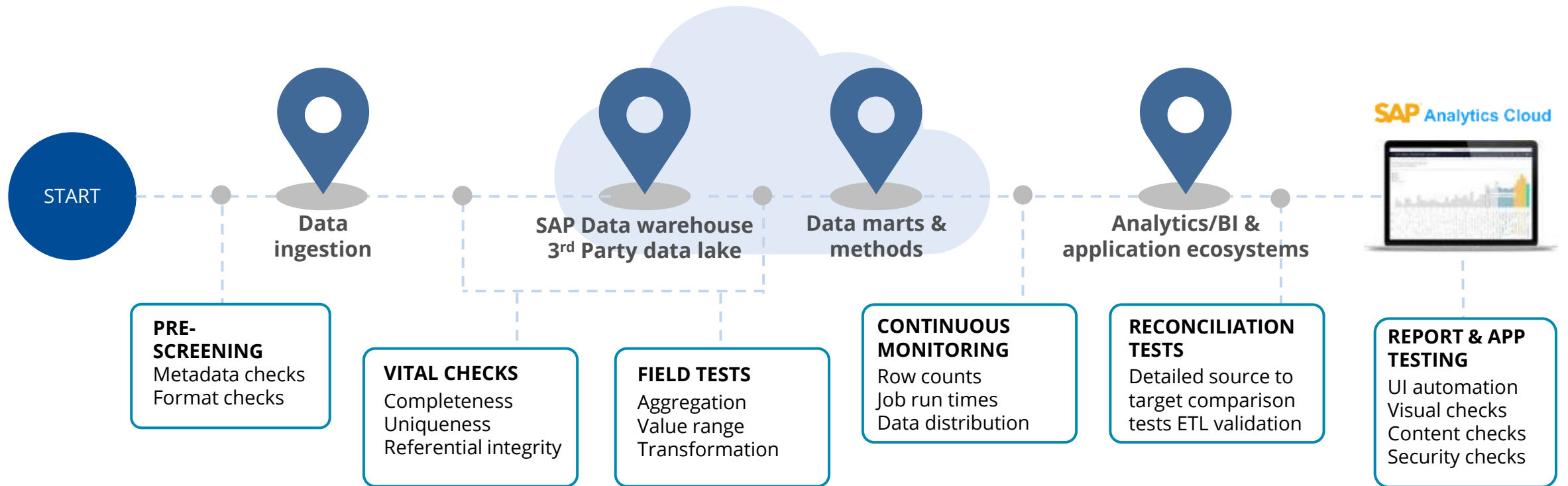
## Across SAP and 3rd-party technologies

- Tests all data regardless of type, source, or format
- Includes specific data tests tailored to catch errors at different parts of the data journey, from source ingestion to business process step and final report
- Complements existing data tools by filling in the gaps that they don't cover
- Tests at volume and velocity



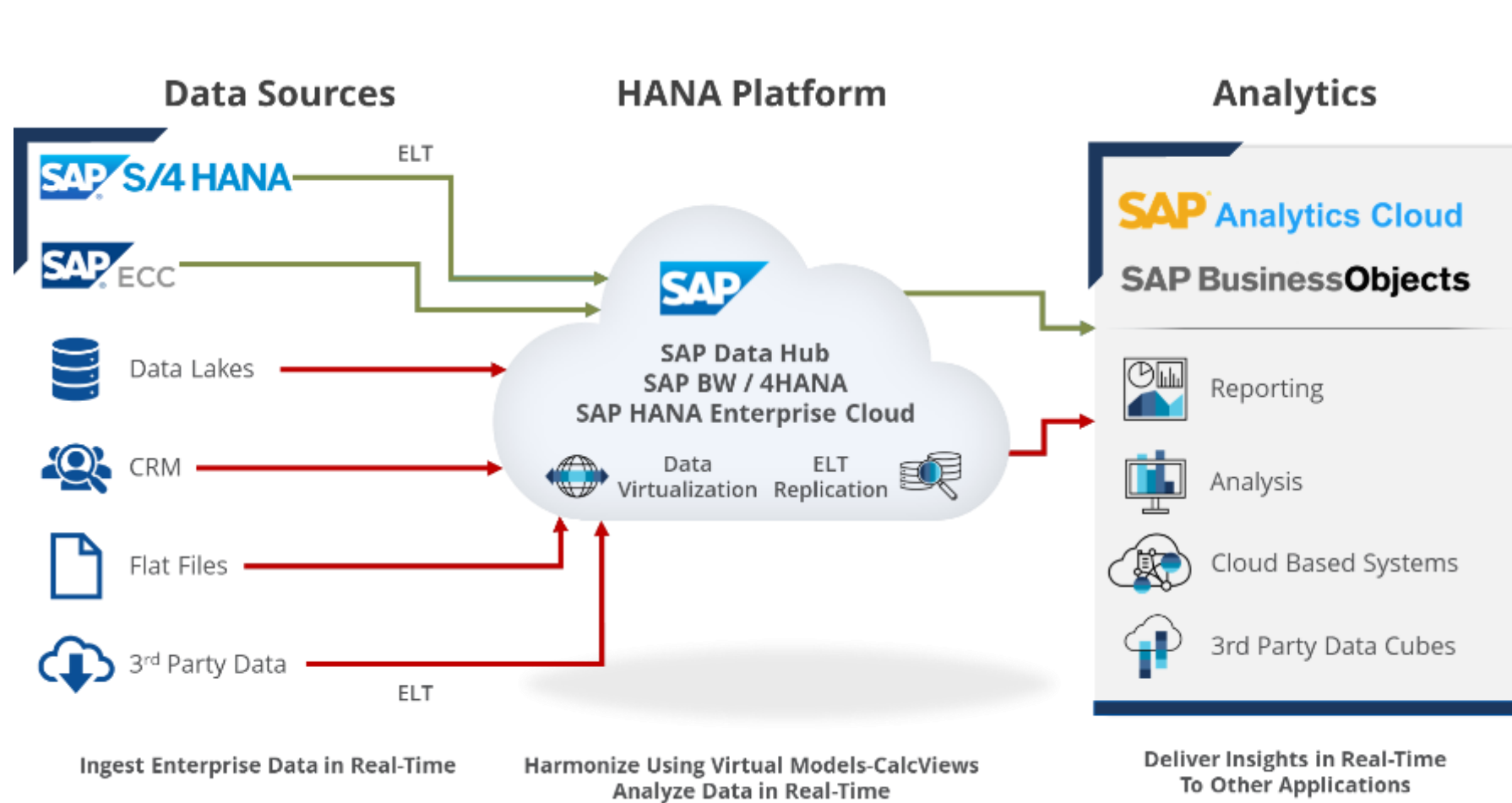
# Deliver Trustworthy Data

Example scenario: Verify sales analytics data and dashboards



# The Race is on to Find Data Errors

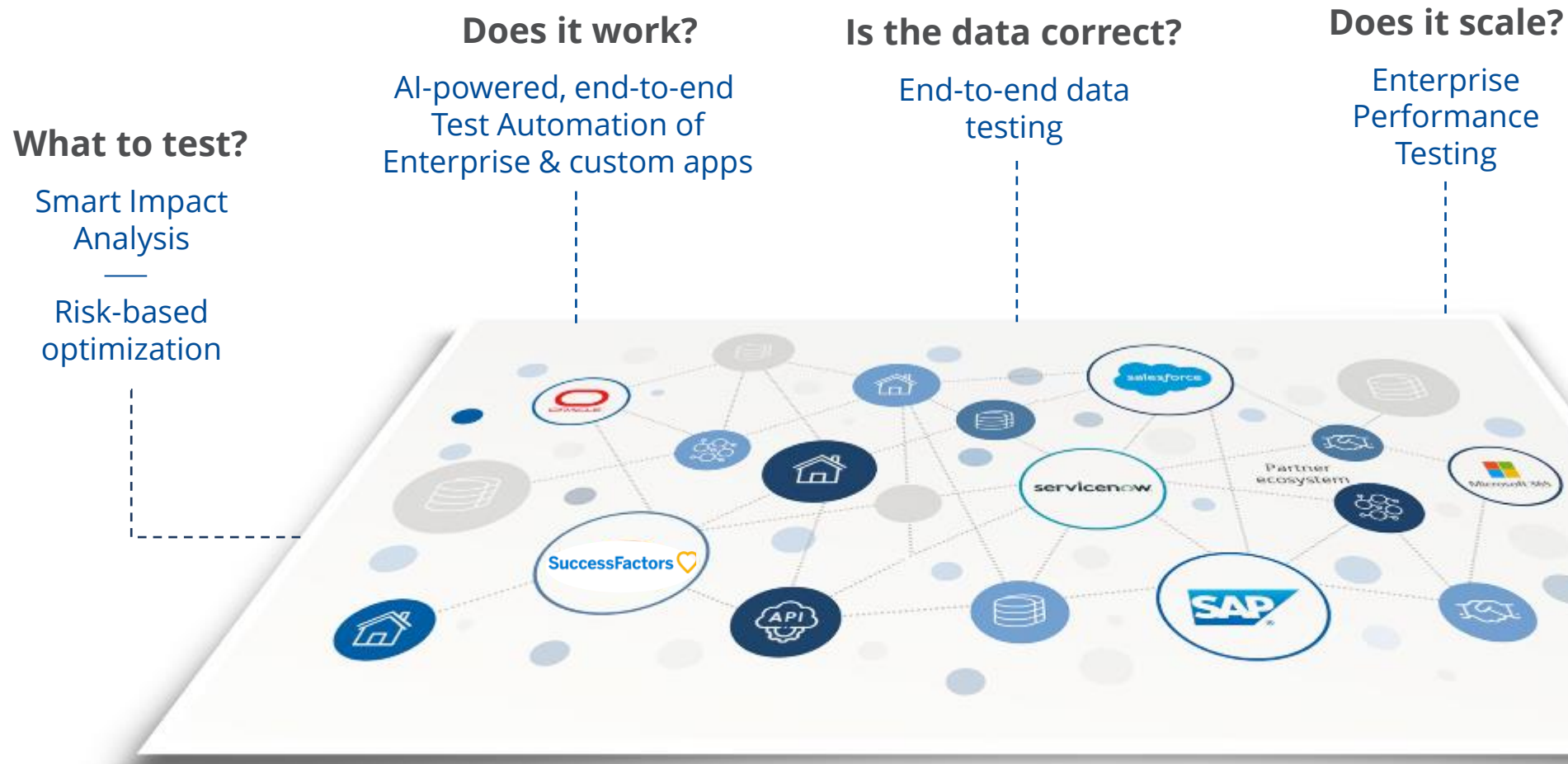
To **TRUST** data in production...you **MUST test end-to-end** in the test environment



- 1 Pre-Screening**
  - Metadata checks
  - Format Checks
- 2 Vital Field Checks & Field Tests**
  - Completeness: Row count, min/max, avg, sum, checks
  - Correctness: Uniqueness, not null, hash-comparisons, data ranges
  - Integrity: Relation, domain
- 3 Reconciliation**
  - Row by row comparison
  - Comparison of 2 data sets
- 4 Report Testing**
  - UI Automation
  - Visual checks
  - Content check for dimensions
  - Security
- 5 Monitoring**
  - Track row counts
  - Job run times
  - Data distribution per column over time

# Deliver High-Quality Applications at Speed

All the Capabilities You Need



# SAP Enterprise Performance Testing (EPT)

Tricentis NeoLoad

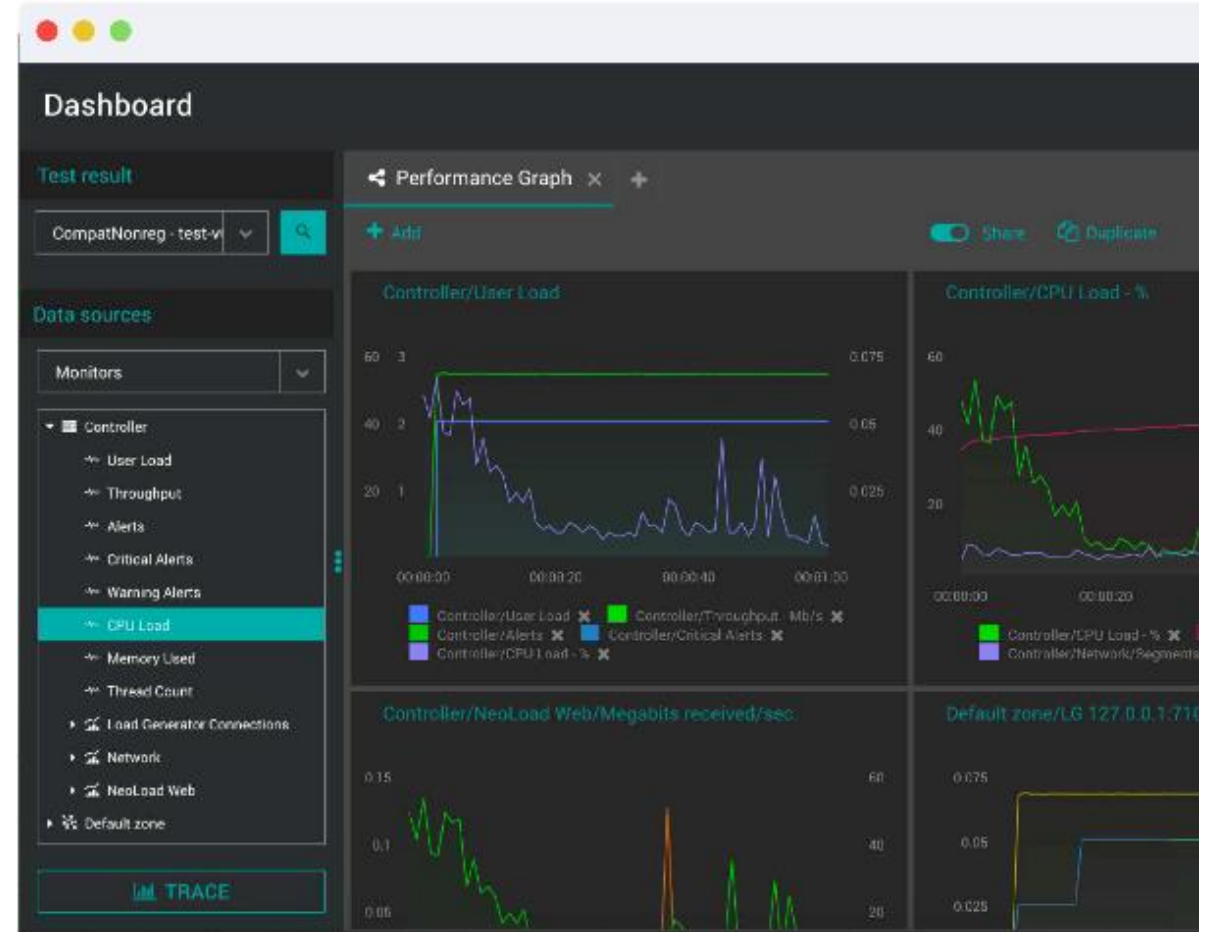
## Continuous performance testing for microservice to monolith

**Robust Platform** uniquely positioned to address performance testing challenges in modern applications (*cloud, web, mobile, streaming, IoT*) and in core enterprise applications such as SAP

**Rapid test design** with low-code, no-code approaches

**For experts and non-experts alike**

Continuous performance testing **for all SAP use cases** from S/4HANA migrations to end-to-end SAP business processes and other non-SAP protocol testing





# SAP EPT has Native Support for SAP Testing

EPT supports traditional on-premise SAP, hybrid and modern SAP cloud deployments.

User Experience	Web, NetWeaver, FIORI, SAP GUI
Application	ERP (ECC, S/4), CRM, Hybris, Business Technology Platform (BTP)
Platform	SAP NetWeaver, SAP Cloud Platform
Database	Oracle, HANA, SQL, DB2
Non-SAP Protocols	HTTP(S/2), Salesforce, Citrix, GWT, MQTT, SOAP, WebSocket, JMS, Oracle, RTMP, AMQP, Java



# SAP Enterprise Performance Testing (EPT)

## Native Integration

**Native integration** with other testing and DevOps tools contribute performance engineering metrics across all phases of release & delivery.

**One click conversion** of functional into performance tests. Convert SAP GUI, API, Web tests from ECT with one-click.

SAP EPT performance tests are **automatically updated** – enables Continuous Performance Testing

Up to **80% faster** test design & maintenance

The image displays the SAP EPT software interface. The central window shows a test definition editor with a tree view of test actions and a settings panel on the right. The settings panel includes options for 'Play all elements sequentially', 'Play all elements randomly', and 'Advanced mode'. Below the settings panel, there are options for 'Pacing' and 'Pacing duration between'. The interface also shows a 'Dashboard' window with performance graphs and a 'Test Results' window with a table of test results. Blue arrows point from the 'One Test Definition' text to the test definition editor and from the 'One Test Definition' text to the dashboard.

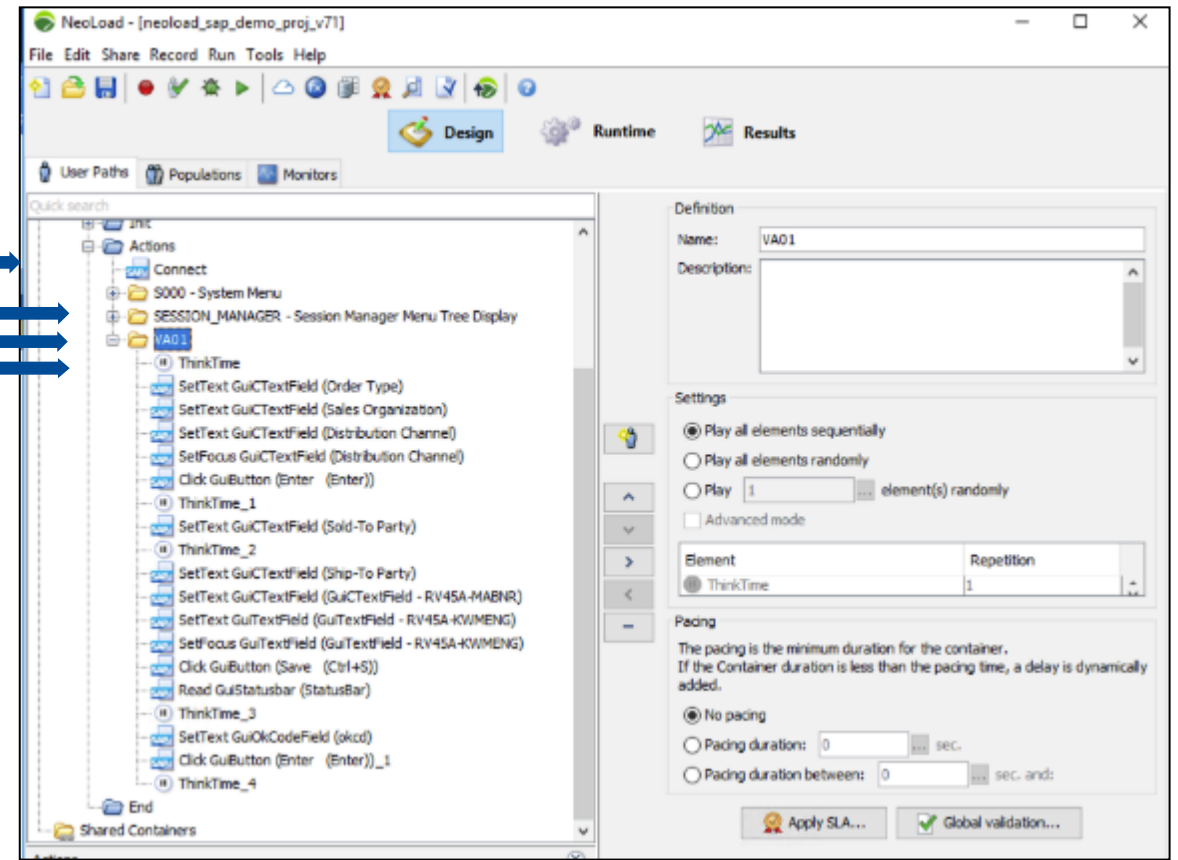
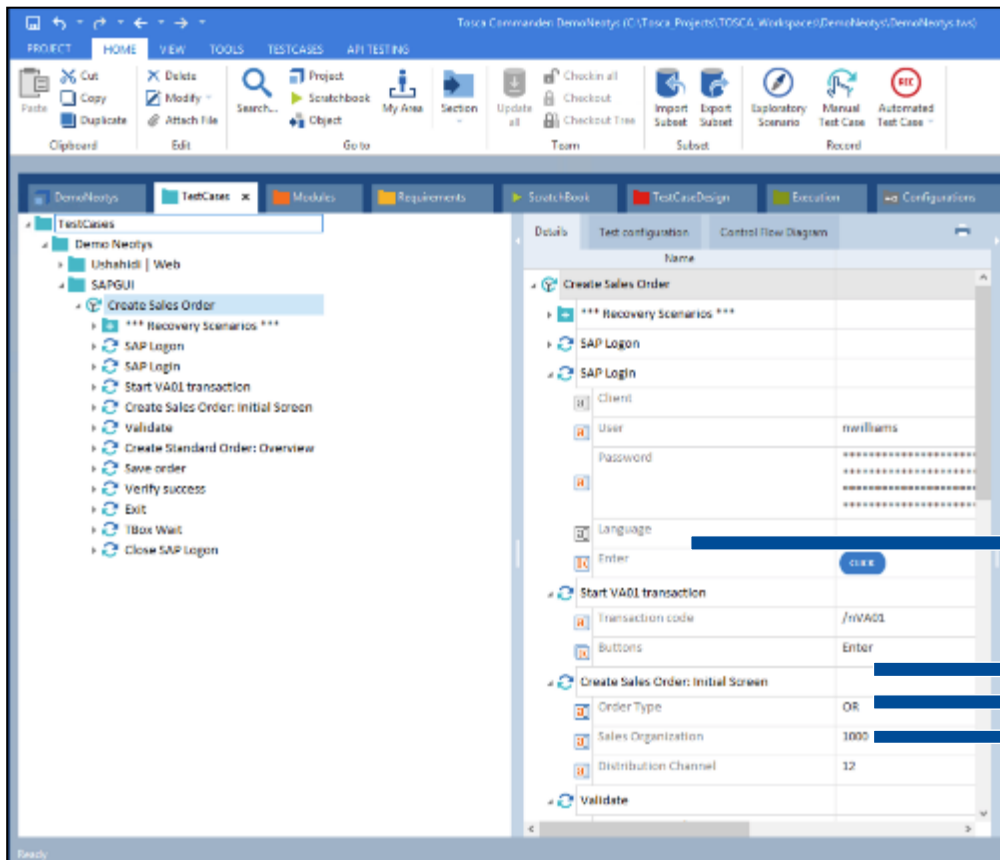
One Test Definition

One Test Definition

# ONE Test Definition

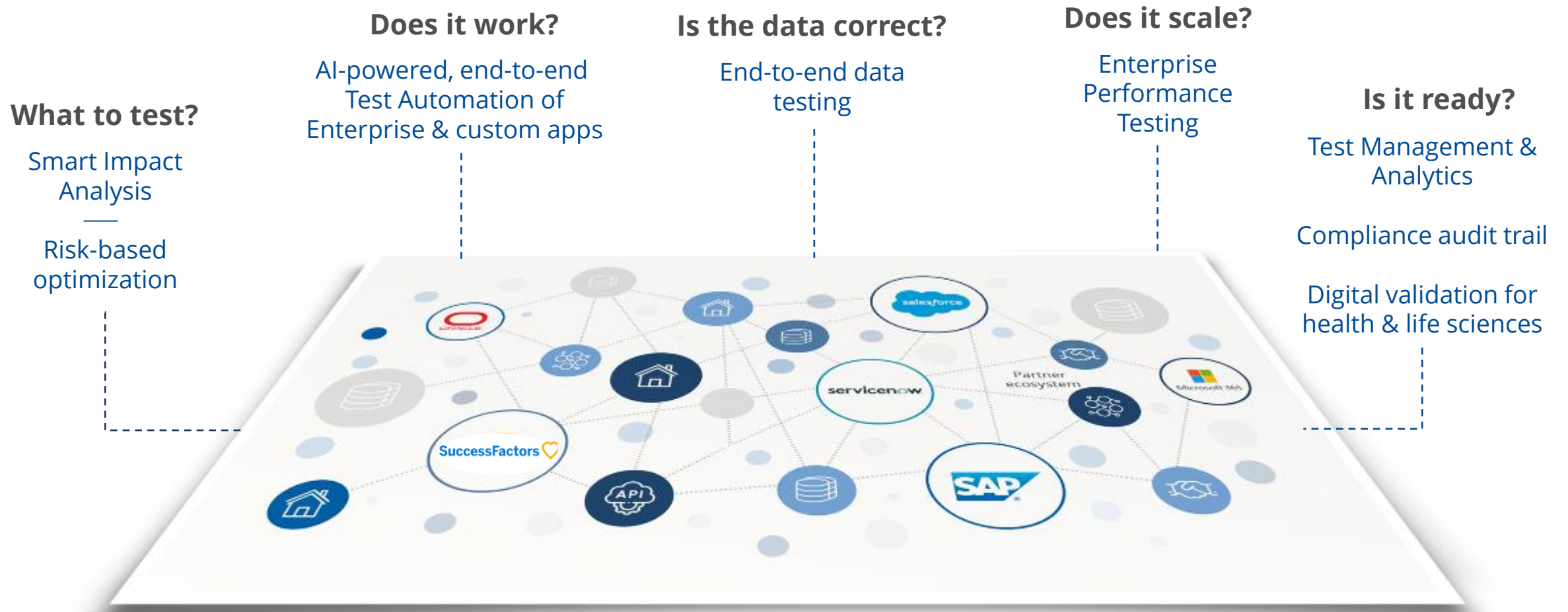
## EPT & ECT Integration

One-click conversion to NeoLoad / EPT

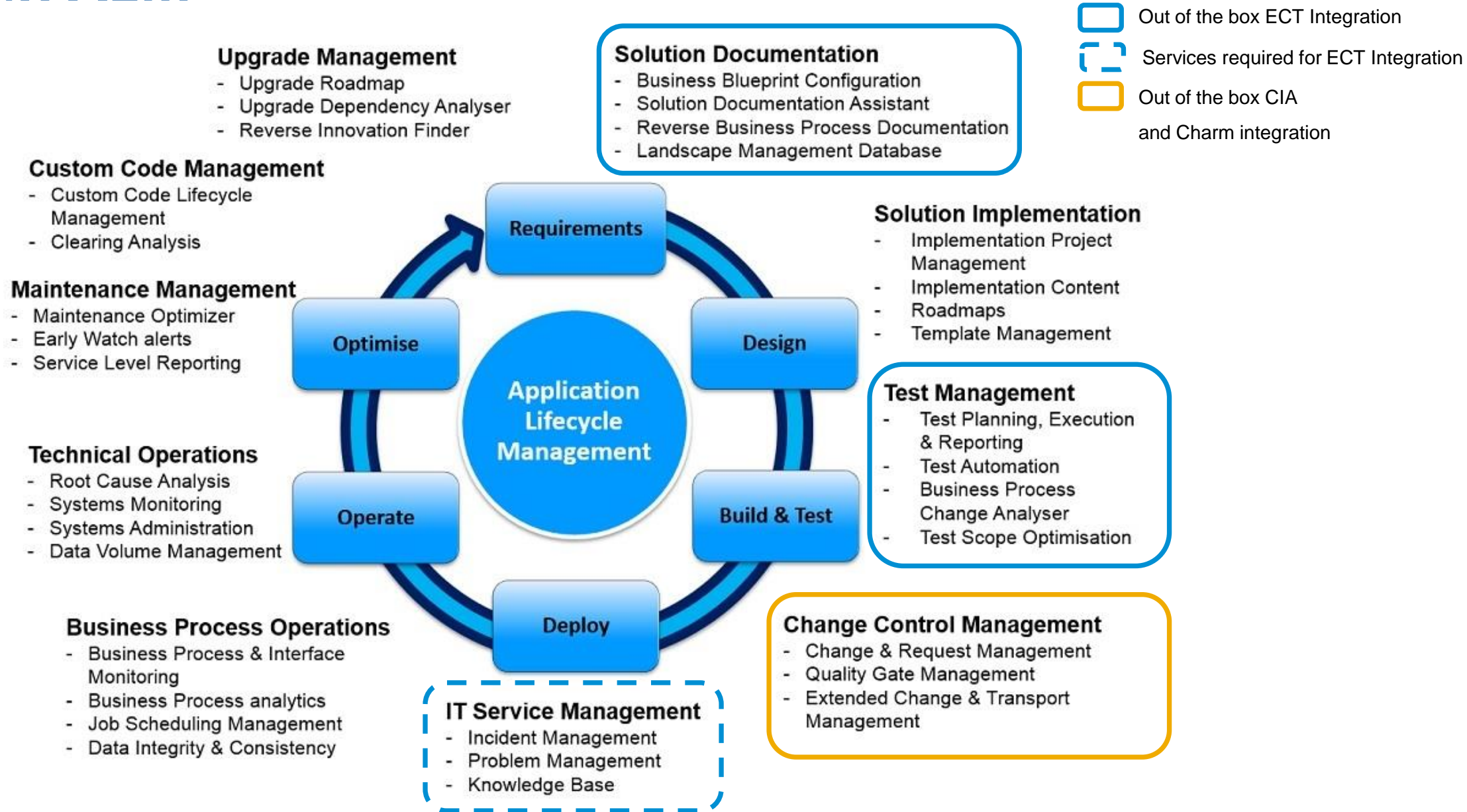


# Deliver High-Quality Applications at Speed

All the Capabilities You Need



# SolMan ALM





# Forrester Total Economic Impact

## SAP Application Testing Solutions

Through customer interviews and data aggregation, Forrester concluded that **SAP application testing solutions by Tricentis have the following three-year financial impact.**

### Tricentis Business Assurance Quantified Benefits

Total Benefits:

**\$7.8 million**



When you put it all together, the benefits are clear: less test condition, less effort, less errors.

ERP principal test manager, telecommunications

#### BENEFITS

- Accelerate** innovation and software release cycles.
- Reduce** risks to critical business processes.
- Increase** transparency and support real-time insights.
- Lower** costs by reducing manual test efforts and complexity.
- Empower** business users and better decision-making.

**334%**

ROI and six months payback

**300%**

Improvement in application release rate

**84%**

Reduction in testing scope, and 78% reduction in production errors

**99.4%**

Reduction in performance test maintenance costs



Source: "The Total Economic Impact of SAP Application Testing Solutions by Tricentis," Forrester Consulting, 2021.



# The Benefits of Business Assurance Transformation

Smart impact analysis



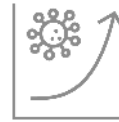
↓ 84%  
testing effort

Intelligent test automation



↑ 90%  
automation rate

Enterprise performance testing



↓ 95%  
maintenance effort

End-to-end data testing



↓ 100%  
cost avoidance

Unified test mgmt. & analytics



↑ 30%  
project capacity

10x faster release cycles

40% cost reduction

90% risk coverage

# Our Approach is Proven

In every industry and geography, leading brands rely on Tricentis

Energy & Utilities	Financial Services	Healthcare & Pharmaceutical	Insurance	Manufacturing	Telco & Media	Retail & Leisure

# Sample Canadian Accounts



# Available SAP Resources

- SAP Application Testing Solutions by Tricentis (Video)  
<https://www.sap.com/canada/assetdetail/2021/12/a2690166-0e7e-0010-bca6-c68f7e60039b.html>
- Forrester Report  
<https://www.tricentis.com/resources/forrester-total-economic-impact-sap-testing-solutions/>
- SAP Change Impact Analysis (What to test?)  
<https://www.sap.com/canada/products/technology-platform/change-impact-analysis.html>
- SAP Enterprise Continuous Testing (Does it work?)  
<https://www.sap.com/canada/products/technology-platform/enterprise-continuous-testing.html>
- SAP Enterprise Data Integrity Testing (Is the Data Correct?)  
<https://www.sap.com/uk/products/technology-platform/enterprise-data-testing.html>
- SAP Enterprise Performance Testing (Does it Scale?)  
<https://www.sap.com/canada/products/technology-platform/enterprise-performance-testing.html>

# Thank You!

Rick Brown, Tricentis Account Manager

[r.brown@tricentis.com](mailto:r.brown@tricentis.com)

416-407-6975