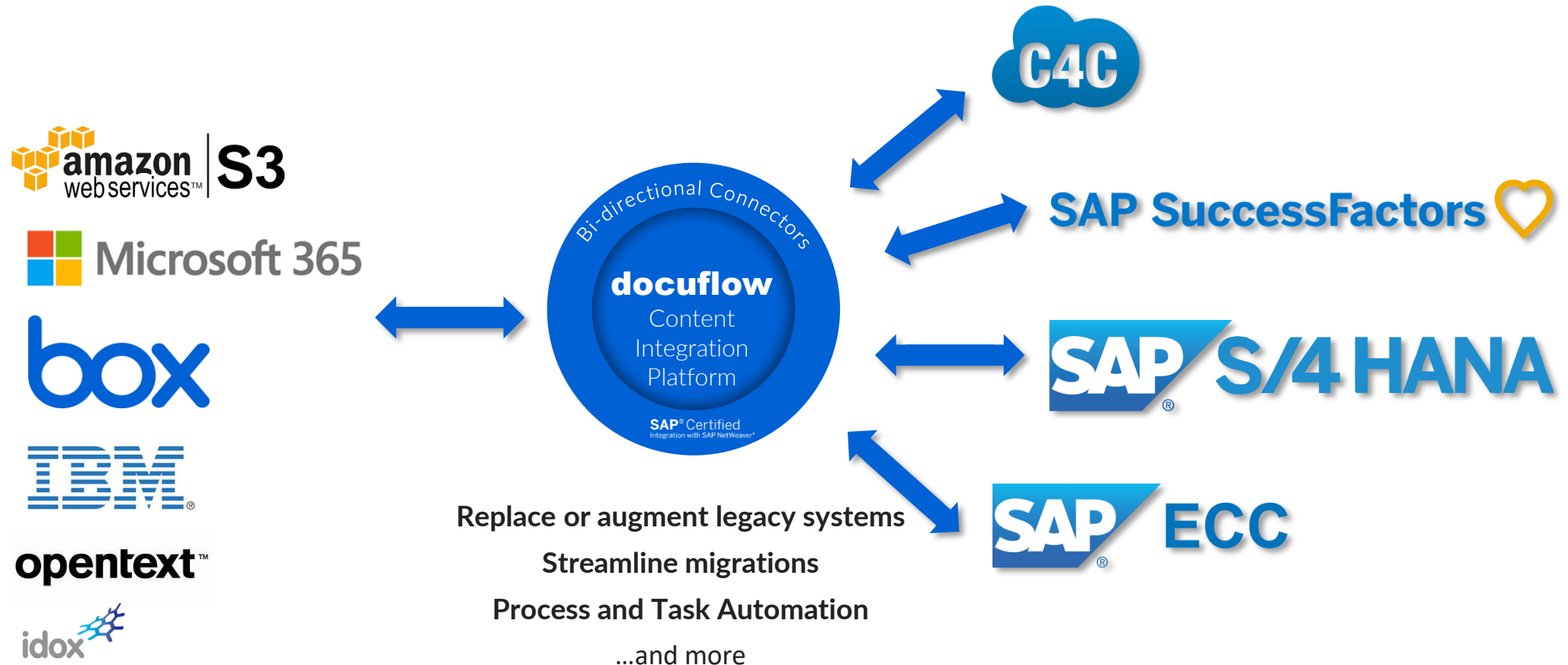


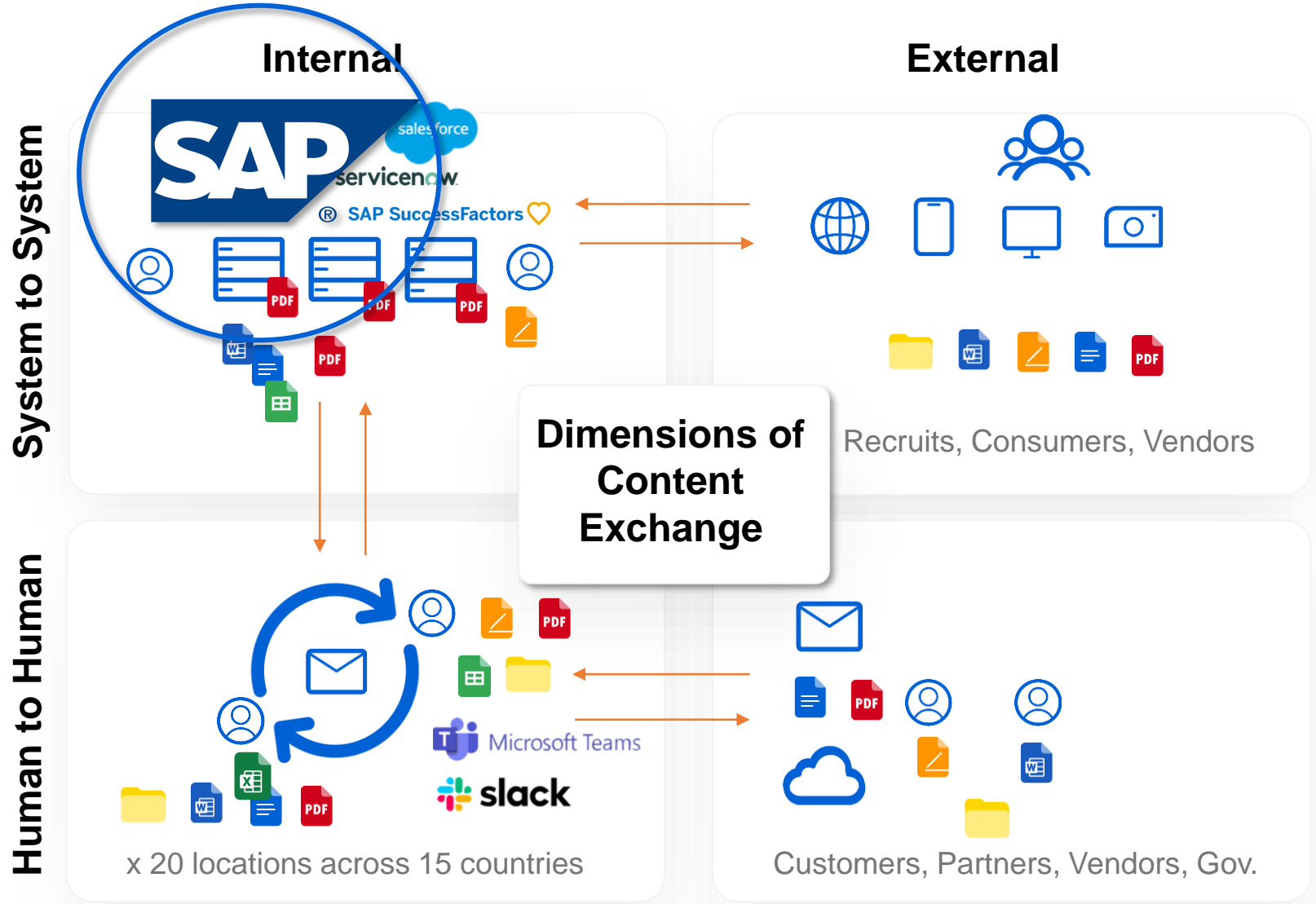
VersaFile docuflow

Helping SAP organizations modernize how they integrate and automate content across their enterprise.



From our point of view

- Ability to do this is a Requirement for successful:
- Digital Transformation
 - Task Automation
 - Security & Compliance



What are the Challenges: for SAP content integration today?



High sustainment cost of legacy systems
continue to increase, be it labour, hardware or licensing



Expansion is time-consuming
with projects being long-tail and expensive, drives down ROI



Friction is high, user adoption is low
due to lack of modern and easy ways to collaborate



Security breaches are growing
due to lack of modern, secure, and easy ways to collaborate

Are the problems worth solving?



Prep for S/4

- Remove content from ECC database
- Archive data objects
- Migrate content to cloud



Save cost

- Reduce sustainment efforts
- Eliminate legacy software licenses
- Eliminate legacy hardware/cloud VM's



</> Replace custom code

- Reduce sustainment efforts
- Assessed as S/4 in-compatible
- Use no-code/low-code options



Process Automation

- Save end-users time and clicks
- Automate micro tasks & processes
- Eliminate errors and re-work



Reduce risk

- Better information governance
- Aligned unstructured with structured
- Inform and optimize your decisions



More secure

- Eliminate content in the wild
- Easier Collaboration
- Secure information from anywhere



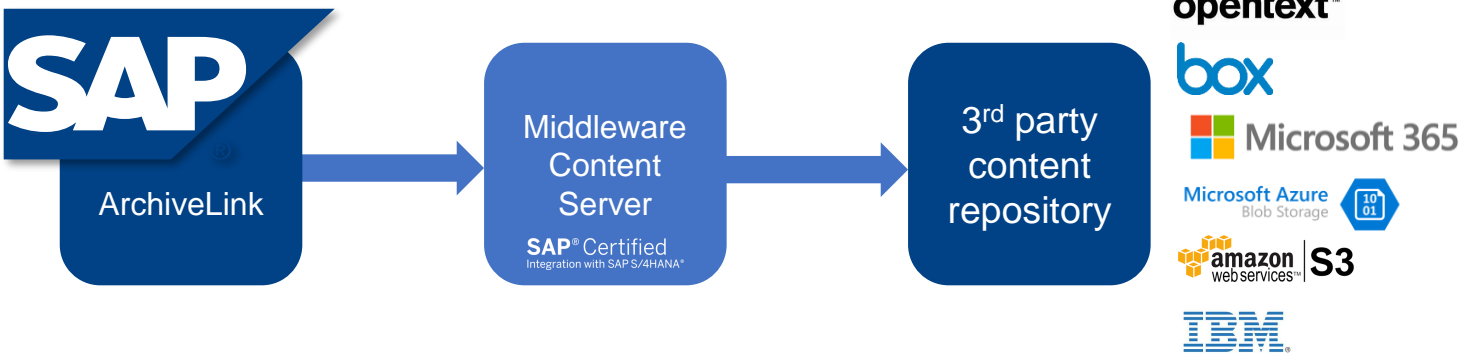
What is ArchiveLink

and why use it?

- Better cost control of SAP infrastructure and resources
- Share content outside of SAP
- Advanced processing on content
- Centralized governance of enterprise content records
- Standardized, low cost to sustain

A standard way of Linking SAP business documents with their attachments stored in a digital storage system:

- SAP database
- SAP content server
- Opentext
- SharePoint online
- Box Content Cloud
- IBM
- etc



What's happening with ArchiveLink



SAP has introduced CMIS (Content Management Interoperability Standard) as the modern approach for archiving, storing and integrating attachments in SAP cloud environments.

Q: Does that mean ArchiveLink is dead??

A: NO, there has been NO announcement from SAP that ArchiveLink will be deprecated, after all 99.99% of ECC & S/4 customers use it, however CMIS is the ONLY option for S/4 Cloud Public.



SAP content management options

	ECC	S/4 on-prem	S/4 Cloud Private Edition	S/4 Cloud Private Edition On RISE	S/4 Cloud Public Edition
Database					
ArchiveLink					
DMS					
CMIS					
BTP					

Available content migration paths to CMIS

Greenfield



Other CMIS challenges

1. Limited repository support (sap, optx, a few in Europe)
2. The standard is really a modified standard, so standard CMIS repositories won't work with-out modifications
3. Its capabilities are limited
4. There is no considerable added value or benefit



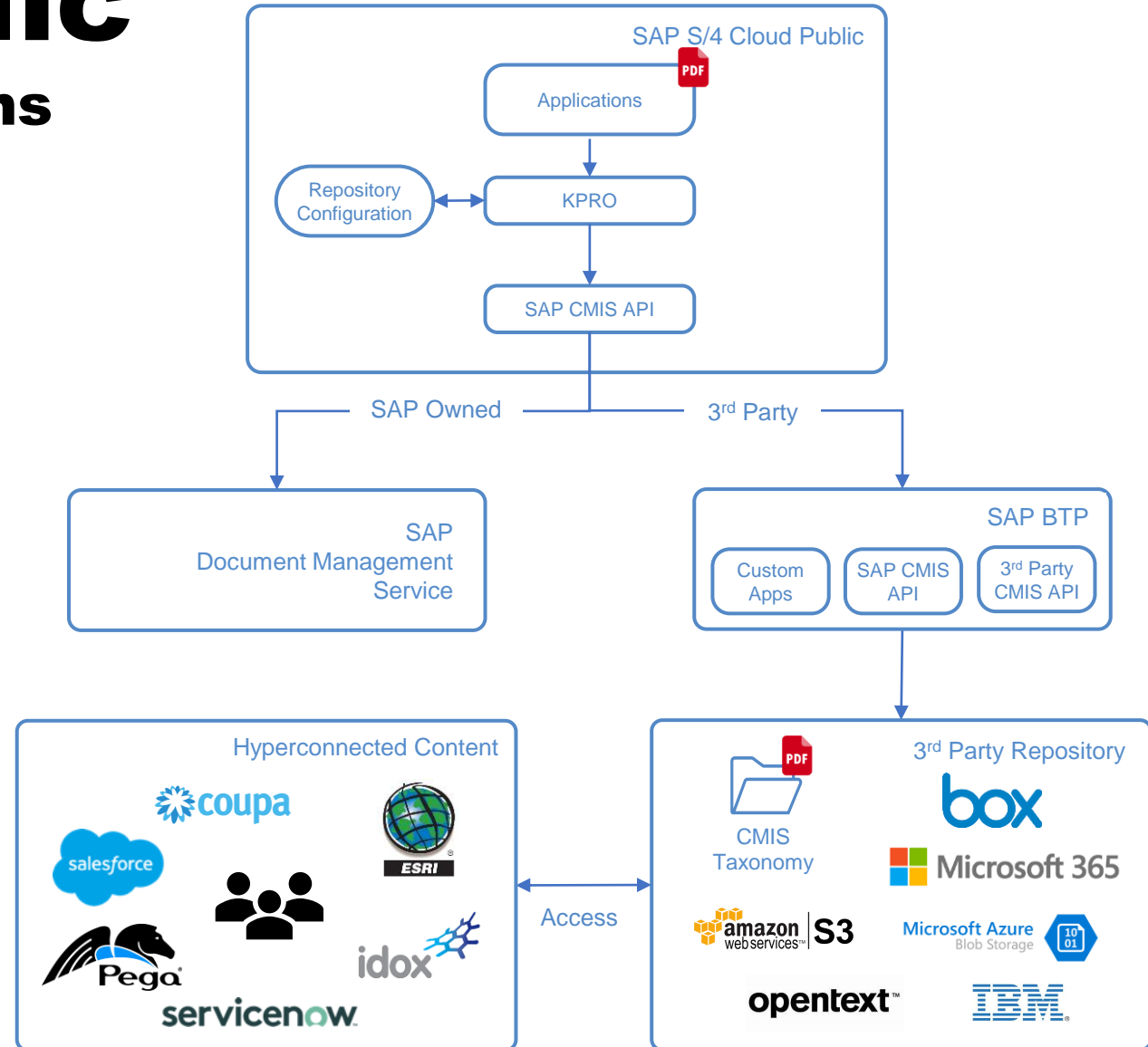
HOWEVER,...it is the direction SAP is heading...so we built our SAP CMIS connector so customers have choices and can leverage their preferred repository...

HERE IS WHAT ELSE WE LEARNED...

S/4 Cloud Public

Content Management Options

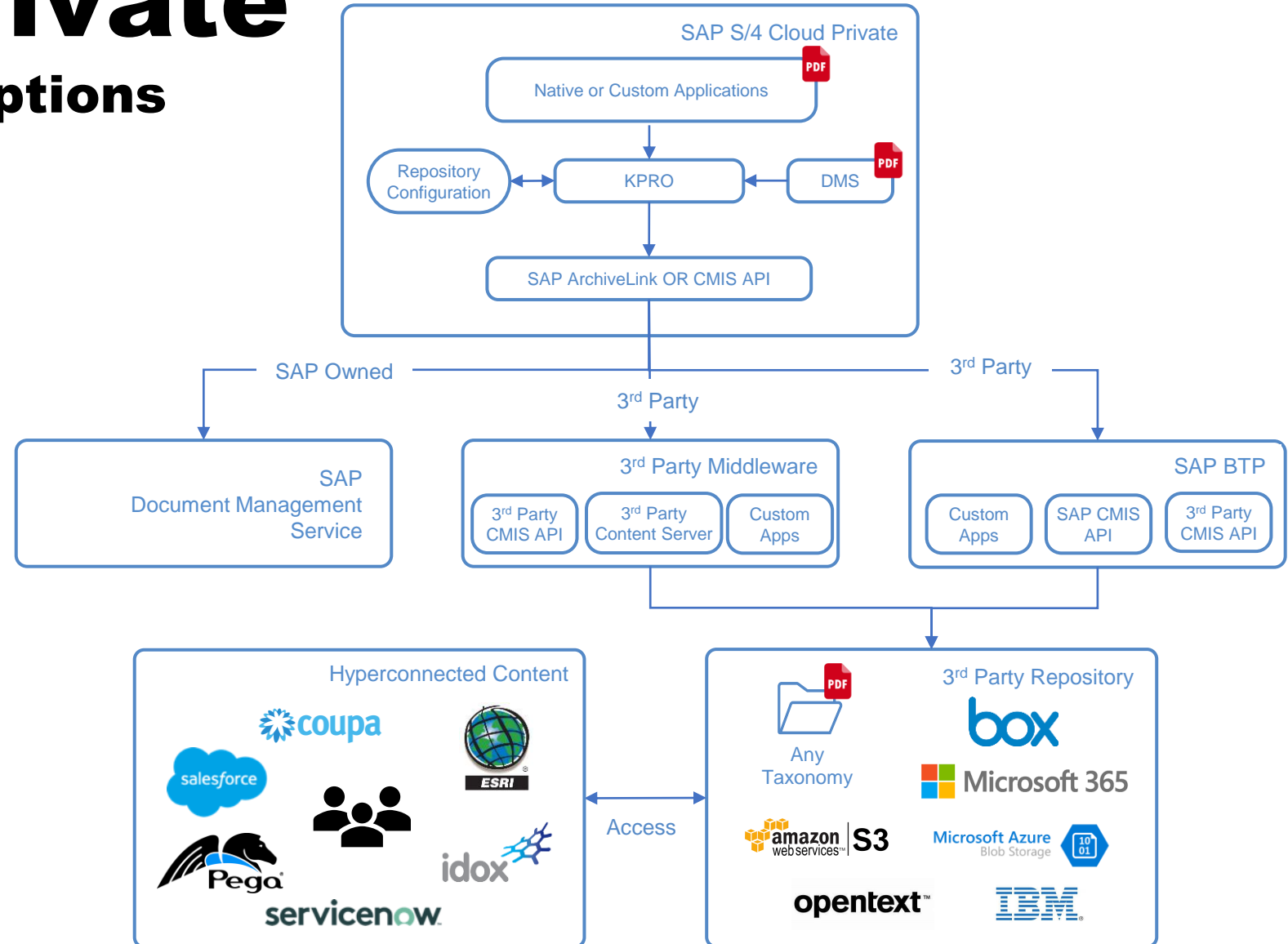
- No ArchiveLink
- CMIS Only
- Default is SAP doc mgmt. Service
- It's ready to go by default
- It's good for basic attachment archiving
- Limited to no useful metadata
- More metadata requires 3rd party CMIS API or custom development
- Want more metadata for Hyperconnected Content & process automation



S/4 Cloud Private

Content Management Options

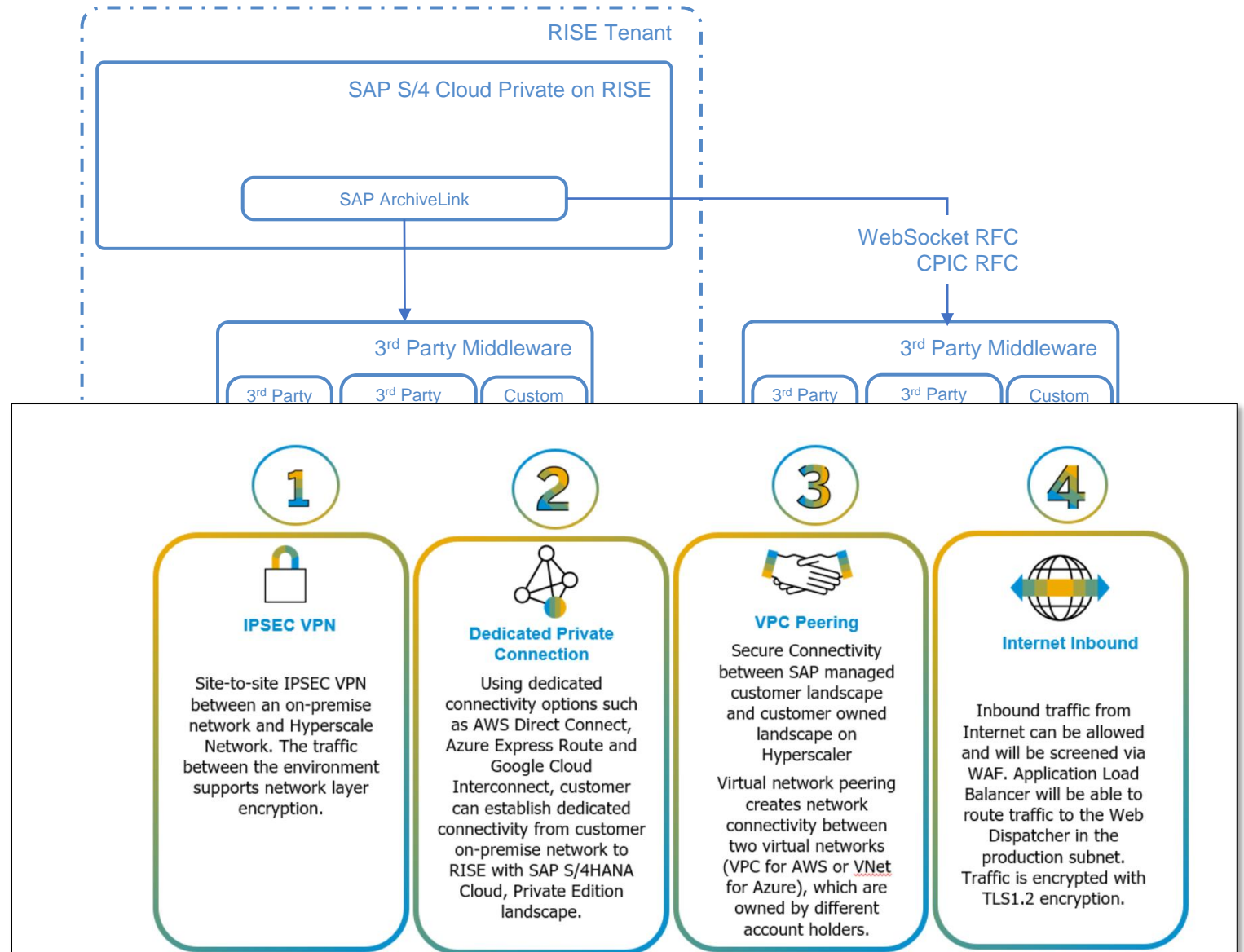
- ArchiveLink is available
- CMIS is available
- Default is SAP database
- As with CMIS, Content Server provides little to no Business Metadata
- More metadata requires 3rd party CMIS API, an advanced Content Server, Advanced Application Solution or custom development
- **Richer 3rd party solutions exist**
- Want more metadata for Hyperconnected Content and Task automation



S/4 Cloud Private On RISE

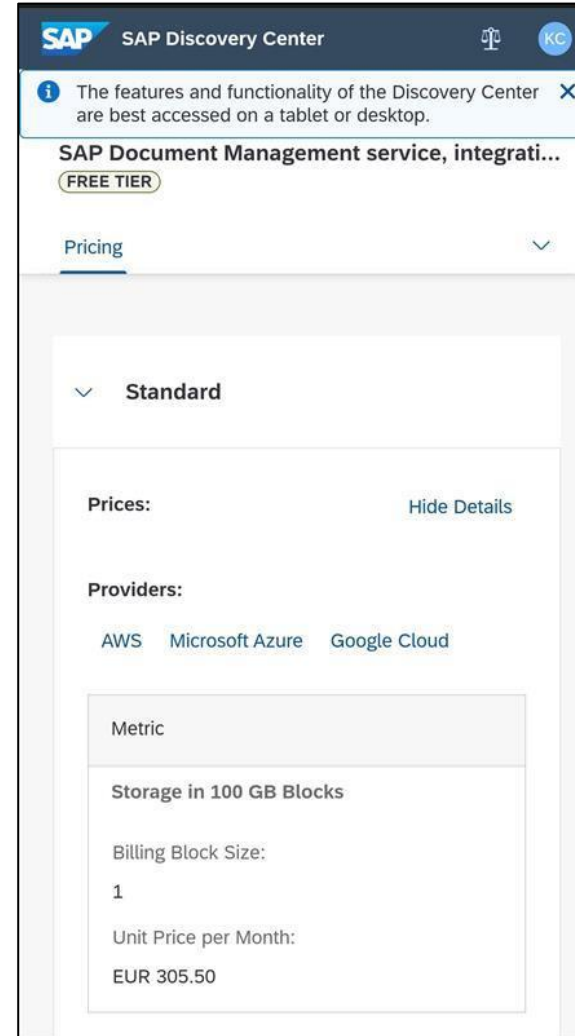
Connection Options for 3rd party middleware

- Most common options are VPN and Internet Inbound.
- Have also had clients deploy a VM within the RISE deployment.
- HTTPS is supported.
- Two types of RFC.
 - CPIC RFC
 - WebSockets RFC.
- RFC through HTTPS has been supported since 1909 release.
- Rise only allows port **443** on inbound HTTPS, but will enable outbound ports of your choice to be open.



SAP document service option

1. It's better than using your HANA database
2. It's ready to go by default
3. It's good for basic attachment archiving
4. Limited to no metadata
5. No access outside of SAP
6. No ability to leverage non-SAP applications
7. It's expensive at 305€ per 100 GB per Month, that's approx. \$52,680 CAD per Year...
8. There are other lower cost, more powerful and flexible options



DEMO – Introduction to SAP CMIS

The image displays two overlapping windows from a SAP CMIS demo. The left window is the SAP 'Display Parked Vendor Invoice' interface, and the right window is a web browser showing the document's metadata.

SAP Display Parked Vendor Invoice (Left Window):

- Document: 1900000912 1710 2023
- Transact: Invoice, Bal.: 0.00
- Vendor: 1000100, Sp.Gr/Lt: , Invoice date: 02/12/2022, Reference: DEMO1, Posting Date: 01/06/2023
- Document No.: 1000000912
- Scenario: Assign then Store
- File Storage System: C:\Users\kumaa\Downloads\Sample.pdf
- Number of Files: 1
- Document Type List:
 - B: AP Approval Support
 - B: AP Invoice Confidential
 - B: AP Original Vendor Invoice
 - CMIS Test
 - F: AP DC Workflow
 - F: AP Invoice General
 - F: AP Workflow
 - M: AP Invoice General

Browser Metadata View (Right Window):

- Document ID: 0E7383EF12CD1EEE94FEC9AEC0E50BCD.pdf
- Invoice from PTE Paper.com
- Invoice Date: 02/12/2022
- Table: Item

Item	Name	B.O. No.	Quantity	Unit	Weight	Amount
1	1000100	1000100	1	EA	1000	1000.00

 - Subtotal: 1000.00
 - Sales Tax (0.00): 0.00
 - Total: 1000.00
 - Payments/Credits: 0.00
 - Balance Due: 1000.00

Almatis

Reduces database by 40%

- Operations across 21 countries
- HQ Frankfurt, Germany
- Produce Alumina and Alumina based products
- Outbound Attachment & metadata storage to M365 SharePoint Online
- Inbound email attachment linking to SAP transaction records
- Migrate and replace Opentext archive server
- Moving to VIM storage to SharePoint Online
- Outcomes
 - Save 40% on ECC database
 - Save Costs
 - Better User Experience & Functions

INTEGRATING SHAREPOINT

INTRODUCING

Almatis teamed up with VersaFile to modernize their document management solution used SharePoint, as well as migrate from Outlook to SharePoint. This was made possible with VersaFile's docuflow. Almatis team modernized how they manage their business with definite business outcomes.

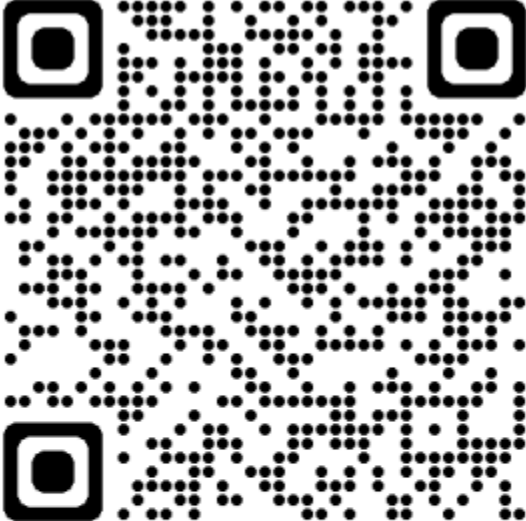
Almatis Prepares for S/4HANA with VersaFile's docuflow for SAP

With over 100 years of alumina expertise, Almatis is the world leader in the development, manufacturing, and supply of premium alumina and alumina-based products. With its head office in Frankfurt, Germany, Almatis serves its customers from 14 strategically located sales, research, and manufacturing sites, producing plenty of business-related content along the way.

Almatis uses SAP as its enterprise resource planning system globally to produce, sell, and deliver the customer service teams are required to manage transaction record in SAP. Almatis was using a 3rd Party archiving server to store shipping documents, vendor invoices, and some of the documents that get attached to SAP transactions.

Contact us to learn more

Contact



seanf@versafiler.com

1-604-505-3097

[docuflow for SAP - Versafiler | Intelligent Content & Process Automation](#)