

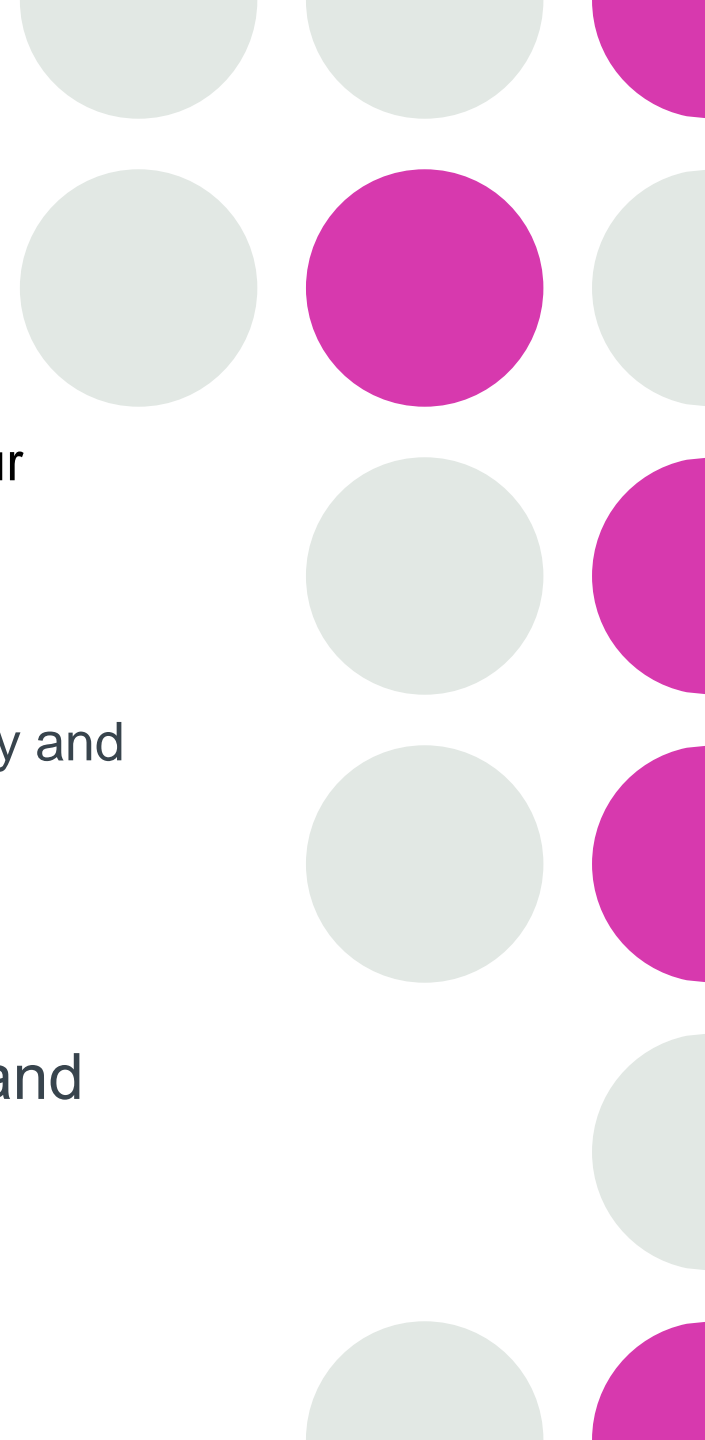


MASTERING SAP: THE POWER OF AI IN BUSINESS/ HOW TO USE CHATGPT WITH SAP

Presented by: Chris Carter

AI & Supporting SAP

- Imagine a world where managing your SAP staff becomes effortless, efficient, and intelligent. Introducing the perfect tool to revolutionize your workforce management: an AI-powered pen. This remarkable pen seamlessly integrates with SAP systems, granting you the power to streamline staff management and unlock unprecedented productivity.
 - One of the major pain points for companies using SAP is the complexity and cost associated with implementing and maintaining SAP systems.
 - Let's have an honest conversation on saving time, money and sanity.
-



AI is Now Part of RISE with SAP

**RISE
WITH
SAP**

Business
Transformation
as a Service

**Intelligent
ENTERPRISE**

Business Process Redesign

Technical Migration

Build Your Intelligent Enterprise

BUSINESS
PROCESS
INTELLIGENCE

TOOLS AND
SERVICES

NETWORK

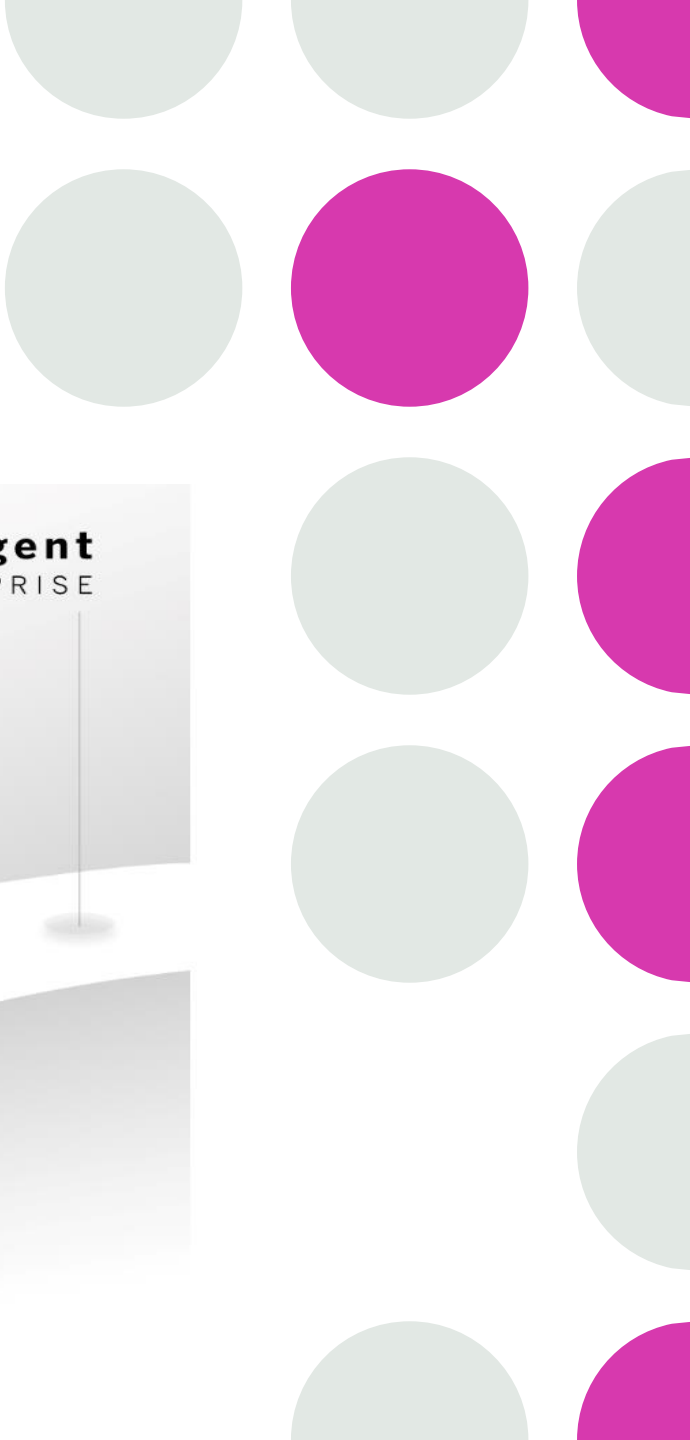
APPLICATIONS

PLATFORM

INFRASTRUCTURE

STARTING
POINT

Lean
vs.
Complex



What are SAP AI Business Services?

Business Entity
Recognition

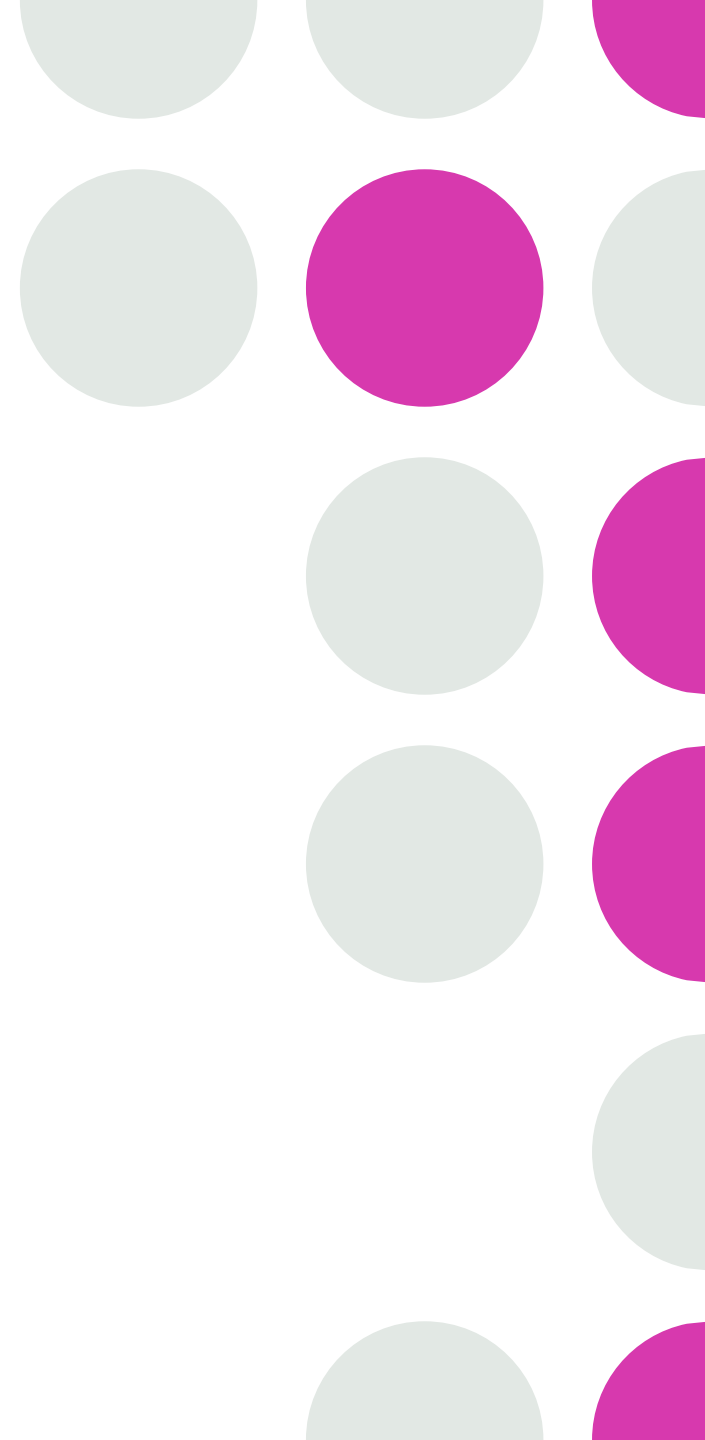
Document
Information
Extraction

Document
Classification

Data Attribute
Recommendation

Invoice Object
Recommendation

Service Ticket
Intelligence





Let's operate at the speed of Technology

- By integrating ChatGPT with SAP S/4HANA, we can revolutionize the way businesses operate. It's like an AI-powered pen.
 - This remarkable pen seamlessly integrates with SAP systems, granting you the power to streamline staff management and unlock unprecedented productivity
-



Minimize Risks to Maximize Potential

- This AI-powered pen is not just a writing instrument; it's a game-changer for SAP staff management. By leveraging its intelligent capabilities, you'll optimize scheduling, match talent effectively, plan resources accurately, gain real-time performance insights, and enhance employee engagement.
 - Embrace the future of workforce management and unlock the full potential of your SAP staff with this revolutionary pen.
-

Business Use cases:

1

Simplified Staff Scheduling: With a single stroke of this pen, you can automatically generate optimized work schedules based on real-time data, employee availability, and business demands. No more manual tinkering or scheduling conflicts. It's time-saving at its finest.

2

Smart Talent Matching: The AI embedded within this pen possesses the ability to analyze employee skills, competencies, and project requirements. It quickly identifies the best-suited candidates for each task, ensuring that you maximize talent utilization and deliver exceptional results.

3

Predictive Resource Planning: Say goodbye to overstaffing or understaffing headaches. By leveraging historical data and predictive analytics, intelligently forecast future staffing needs, enabling you to make informed decisions and allocate resources accurately. It's like having a crystal ball.

4

Real-time Performance Insights: Act as your personal data analyst, continuously monitoring employee performance and providing valuable insights. Effortlessly track key metrics, identify areas for improvement, and reward. It's like having a dedicated HR assistant, right in your pocket.

5

Enhanced Employee Engagement: Boosting employee satisfaction and engagement is a breeze. It facilitates seamless comm, recognition, and feedback loops, fostering a collaborative work environment. Your staff will feel valued, motivated, and empowered to excel.



Generative AI at its best

- In just hours, you can have a fully functioning customer support system that can respond to queries with meaningful replies over email.
 - Instead of relying on traditional chatbot type development, you harness the power of ChatGPT and SAP integration to make the business more efficient and productive. The possibilities can be endless, of how technology can transform the way we do business.
-



Experts are moving forward

- “By integrating ChatGPT with SAP S/4HANA, we can revolutionize the way businesses operate. We’re talking natural and efficient communication that saves time and increases productivity. It’s like having a secret weapon that’ll take your business to the next level!”

SAP Technology Architect, Tech Blogger, and Author

Can I use ChatGPT to check my ABAP code?

- Yes, you can potentially use ChatGPT to assist in checking your ABAP (Advanced Business Application Programming) code. ChatGPT can provide guidance, suggestions, and explanations related to ABAP coding practices. However, keep in mind a few points:
 1. **Understanding of ABAP:** ChatGPT can offer insights into coding principles, best practices, and syntax in ABAP. It can help you with explanations about particular constructs, debugging tips, and performance considerations.
 2. **Code Review and Suggestions:** You can present code snippets to ChatGPT and ask for suggestions or feedback. It might highlight potential issues, suggest optimizations, or provide alternative ways of achieving a specific outcome.
 3. **Learning Resource:** ChatGPT can serve as a learning resource for ABAP developers, helping them understand concepts, functions, and methods within the ABAP language.
 4. **Limitations:** However, please note that ChatGPT doesn't execute code. It can't guarantee the absence of bugs or ensure that your code runs perfectly. Always validate the suggestions and explanations provided by ChatGPT with your own expertise and testing.
 5. **Data Security:** Be cautious not to share sensitive code or proprietary information with ChatGPT, especially if you're using a cloud-based service. Consider using sanitized or anonymized code samples for discussions.
 6. **External Tools:** There are specialized tools and IDEs (Integrated Development Environments) designed specifically for ABAP development that might provide more targeted assistance and code analysis. Consider using these tools in addition to ChatGPT.
 - In summary, while ChatGPT can be a useful resource for discussing ABAP-related concepts and code practices, it's important to complement its insights with your own programming knowledge and expertise.
-






Is using ChatGPT with my SAP environment safe?

- Yes, using ChatGPT with your SAP environment can be safe, but there are important considerations to ensure security:
 1. **Data Privacy:** Make sure that sensitive data and confidential information are not exposed to ChatGPT. Implement data masking or encryption to protect sensitive information from being accessed.
 2. **Access Control:** Implement proper access controls to restrict who can interact with ChatGPT and access your SAP environment. Use authentication and authorization mechanisms to ensure only authorized personnel can use the system.
 3. **Data Retention and Deletion:** Define data retention policies for interactions with ChatGPT. Regularly review and delete unnecessary logs or data to minimize potential risks.
 4. **Secure Communication:** Ensure that the communication between ChatGPT and your SAP environment is encrypted using secure protocols (e.g., HTTPS) to prevent unauthorized access to data in transit.
 5. **Regular Auditing:** Perform regular security audits to identify and address potential vulnerabilities. This includes reviewing access logs, monitoring usage patterns, and conducting penetration testing.
 6. **User Training:** Educate users on the proper use of ChatGPT within your SAP environment. Make sure they are aware of security best practices and potential risks associated with sharing sensitive information.
 7. **Vendor Assessment:** If you're using a third-party solution for ChatGPT, conduct a thorough security assessment of the vendor's product. Ensure they follow industry best practices and comply with relevant security standards.
 8. **Data Minimization:** Provide only the necessary data to ChatGPT. Minimize the exposure of sensitive or critical information to reduce the potential impact of a security breach.
 9. **Regular Updates:** Keep both ChatGPT and your SAP environment up to date with the latest security patches and updates to mitigate known vulnerabilities.
 10. **Contingency Planning:** Develop a plan for addressing security incidents or breaches. This should include steps for containment, mitigation, communication, and recovery.
- Remember that security is an ongoing process, and it's important to stay vigilant and proactive in safeguarding your SAP environment when using ChatGPT or any other external tool.

Can ChatGPT manage my SAP landscape?





ChatGPT can provide assistance and guidance for managing certain aspects of your SAP landscape, but it's important to understand its limitations and considerations:

- 1. Information and Guidance:** ChatGPT can help answer queries related to your SAP landscape, such as explaining concepts, providing insights into best practices, and offering guidance on how to perform certain tasks.
 - 2. Troubleshooting:** It can assist in diagnosing and troubleshooting common issues in your SAP environment by providing suggestions based on the information you provide.
 - 3. Documentation:** ChatGPT can help you access relevant documentation, user manuals, and resources related to your SAP landscape, which can aid in understanding and managing different components.
 - 4. Process Automation:** While ChatGPT can provide guidance on processes, it doesn't inherently have the capability to directly interact with or manage your SAP landscape. However, you could potentially integrate ChatGPT with automation tools or scripts that manage certain tasks within SAP.
 - 5. Data Insights:** ChatGPT can help you analyze data and generate insights from your SAP landscape, but it doesn't replace dedicated analytics tools designed for SAP data analysis.
 - 6. Security and Compliance:** Ensure that any interactions involving sensitive data or actions adhere to security and compliance standards. ChatGPT should be used within the bounds of your organization's security policies.
 - 7. Limitations:** ChatGPT doesn't have direct access to your systems and databases, and it doesn't perform administrative tasks like system updates, backups, or system configurations.
- Remember that while ChatGPT can be a helpful tool for managing certain aspects of your SAP landscape, it should be considered as a supplementary resource and not a replacement for specialized SAP management tools and expert administrators. Always exercise caution and verify critical actions using appropriate channels and processes.
-

Using ChatGPT with SAP can offer several benefits:

Efficient Problem Solving: ChatGPT can help you quickly find solutions to complex problems by providing relevant information, explanations, and step-by-step guidance within the context of SAP systems.

Enhanced User Support: Integrate ChatGPT into SAP applications to offer users instant and accurate support. It can assist users with troubleshooting, queries, and navigation, improving their overall experience.

Process Automation: ChatGPT can automate routine tasks and processes within SAP systems. It can handle repetitive tasks, execute commands, and streamline workflows, saving time and reducing errors.

Natural Language Interaction: Interacting with SAP through natural language simplifies user engagement. ChatGPT understands human language and responds in a conversational manner, making it easier for users to interact with SAP systems.

Onboarding and Training: ChatGPT can assist in onboarding new users by providing training, tutorials, and explanations. This reduces the learning curve and ensures users can effectively use SAP systems.

Data Analysis and Insights: ChatGPT can analyze data within SAP systems, helping users gain insights and make informed decisions. It can generate reports, summaries, and forecasts based on the data provided.

Customization: You can fine-tune ChatGPT to understand industry-specific jargon, company terminology, and unique business processes, making it a tailored solution for your SAP environment.

24/7 Availability: ChatGPT can provide support and assistance around the clock, ensuring that users can access help whenever they need it.

By integrating ChatGPT with SAP, you can create a more user-friendly, efficient, and effective environment for interacting with SAP systems and addressing various business needs.

The background of the slide features a stack of cut logs in the foreground, with a snowy forest and a bright sunset or sunrise in the background. The sky is a mix of blue and orange. On the right side, there are several decorative circles: a white outline circle, a solid pink circle, and another white outline circle, with a white outline circle partially visible at the bottom right.

**Who are the best
resources to
deploy ChatGPT
To on my SAP
landscape?**

Deploying ChatGPT to your SAP landscape requires expertise in both AI technologies and SAP systems. Here are some recommended roles and resources to consider for a successful deployment:

- 1. Data Scientists or AI Specialists:** These professionals can help you fine-tune and train the ChatGPT model to understand SAP-specific terminology, processes, and data. They can work on customizing the model to align with your organization's needs.
 - 2. SAP Administrators:** These experts are familiar with your SAP landscape, its architecture, security protocols, and integration possibilities. They can guide the technical aspects of integrating ChatGPT with SAP.
 - 3. Software Developers:** Developers skilled in both AI and SAP technologies can create the necessary APIs and connections to enable ChatGPT's interaction with your SAP environment.
 - 4. Integration Consultants:** Professionals with experience in integrating third-party tools with SAP systems can provide insights into seamless integration, data flows, and best practices.
 - 5. Subject Matter Experts (SMEs):** These individuals possess deep knowledge of your business processes, SAP modules, and industry-specific requirements. They can collaborate with technical teams to ensure that ChatGPT provides accurate and relevant information.
 - 6. Security Specialists:** Since security is paramount, having experts who understand SAP security measures and AI-related vulnerabilities can help ensure that your deployment is secure.
 - 7. Change Management Specialists:** If deploying ChatGPT affects user workflows or processes, change management specialists can help ensure a smooth transition by communicating changes to users and providing training.
 - 8. Vendor Support (if applicable):** If you're using a third-party ChatGPT solution, the vendor's technical support and implementation team can assist you in the deployment process.
- When deploying ChatGPT to your SAP landscape, collaboration among these roles is crucial to ensure that technical, functional, and security aspects are considered. Each role contributes a unique perspective to the deployment process, leading to a more successful and effective integration of ChatGPT with your SAP environment.
-



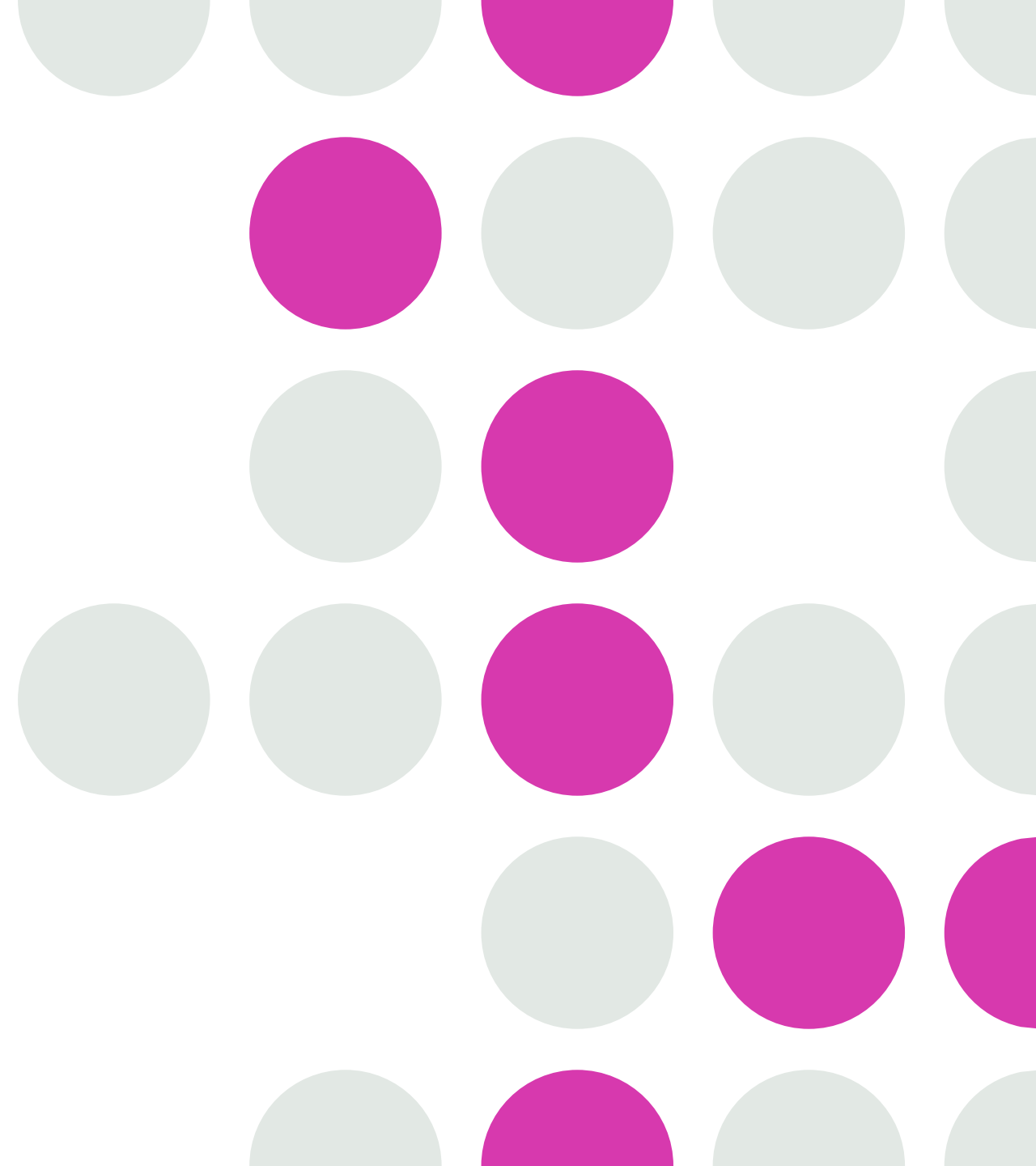
Let's build a report

- Can you generate an ABAP report based on this description * & Simple report to demonstrate the built-in function module * * & REUSE_ALV_GRID_DISPLAY. * * & * * & 1. Creates a selection screen prompting date and optionally user * * & 2. Selects data into an internal table from VBRK (invoice data) * * & 3. Builds a field catalog for displaying the data. * * & 4. Displays an ALV report with custom TOP_OF_PAGE data * * & 5. Listens for user command, on click of an invoice, takes user * * & to the VF03 transaction to display the billing document.
-

REPORT

z_demo_alv_report.

- REPORT z_demo_alv_report.
 - TABLES: vbrk.
 - DATA: BEGIN OF it_vbrk OCCURS 0,
 - vbeln TYPE vbrk-vbeln,
 - erdat TYPE vbrk-erdat,
 - ername TYPE vbrk-ername,
 - netwr TYPE vbrk-netwr,
 - END OF it_vbrk.
 - DATA: wa_vbrk TYPE LINE OF it_vbrk.
 - DATA: it_fieldcat TYPE slis_t_fieldcat_alv,
 - wa_fieldcat TYPE slis_fieldcat_alv.
 - PARAMETERS: p_date TYPE sy-datum OBLIGATORY,
 - p_user TYPE sy-uname.
 - SELECTION-SCREEN BEGIN OF BLOCK b1 WITH FRAME TITLE text-001.
-





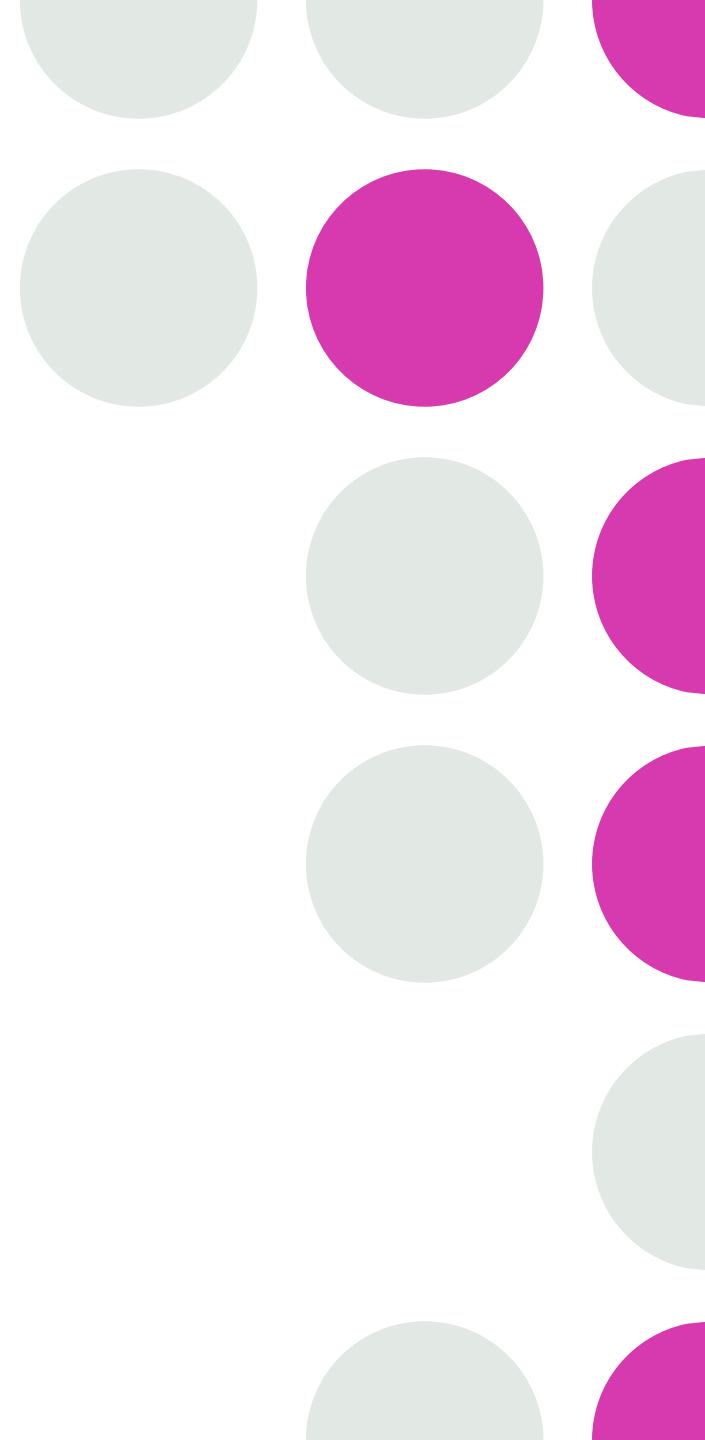
Generative AI with SAP

- <https://www.sap.com/products/artificial-intelligence/generative-ai.html>



SAP & AI is a Win/Win

- By actively supporting your team's integration of ChatGPT, you can enhance their productivity, improve customer experiences, and foster a positive environment for technological innovation within your SAP landscape.
-





Let's get you
Mastering SAP
with our free
Book's:

Christopher Carter



SCAN ME

