

# Data Use Cases and GenAI

Sharayu Kumatkar, SAP

April 25, 2024

INTERNAL – SAP and Customers Only

Add partner  
logo and alt text

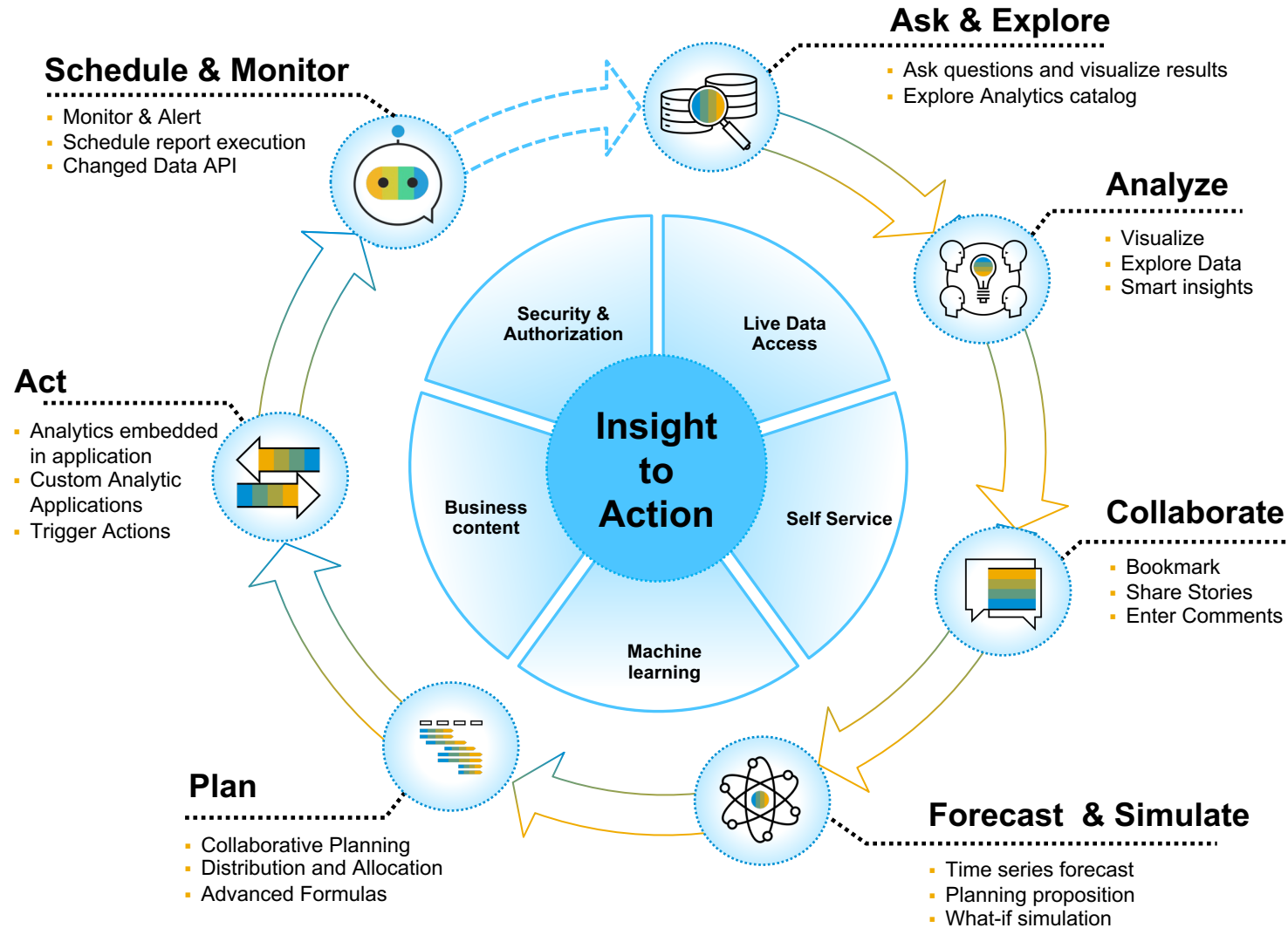




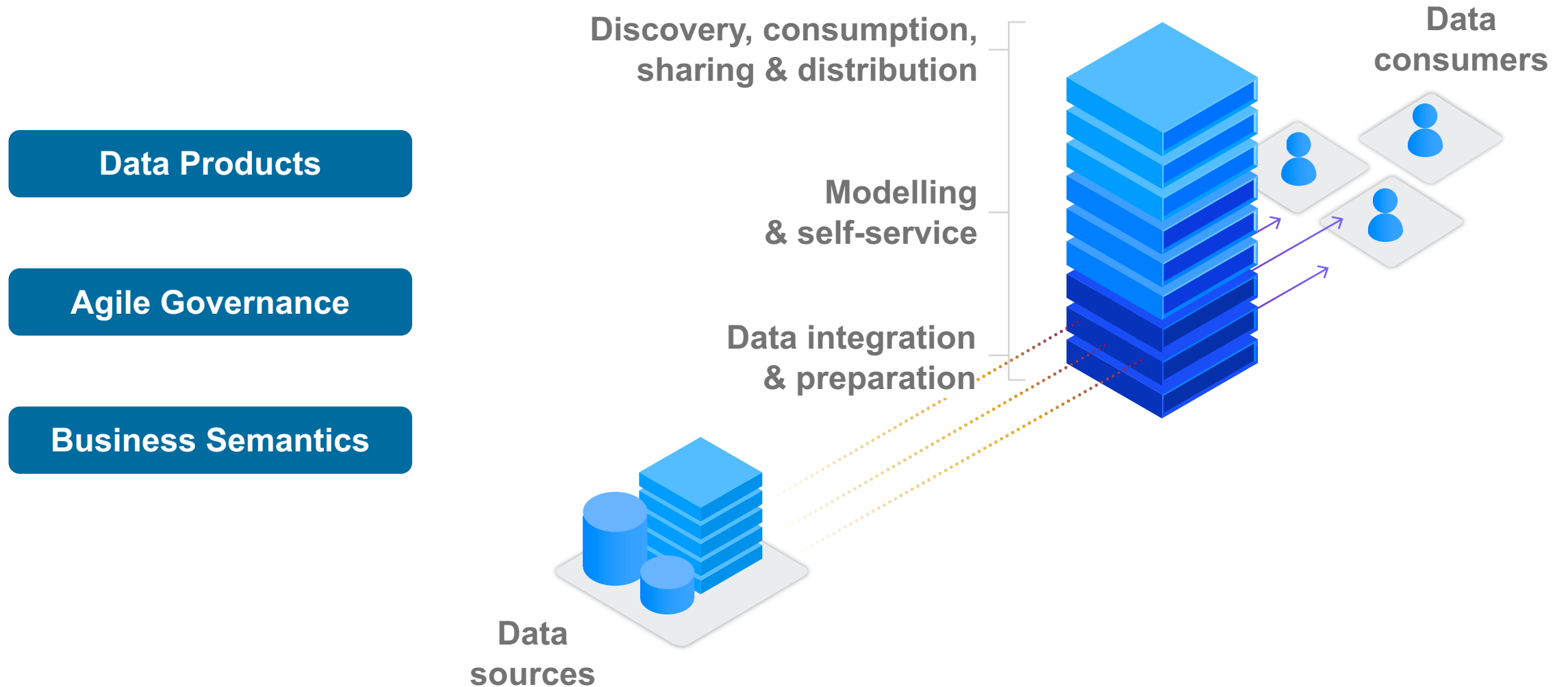


# Support closed-loop decision making

## SAP data and analytics solutions



# Towards a business data fabric with SAP Datasphere

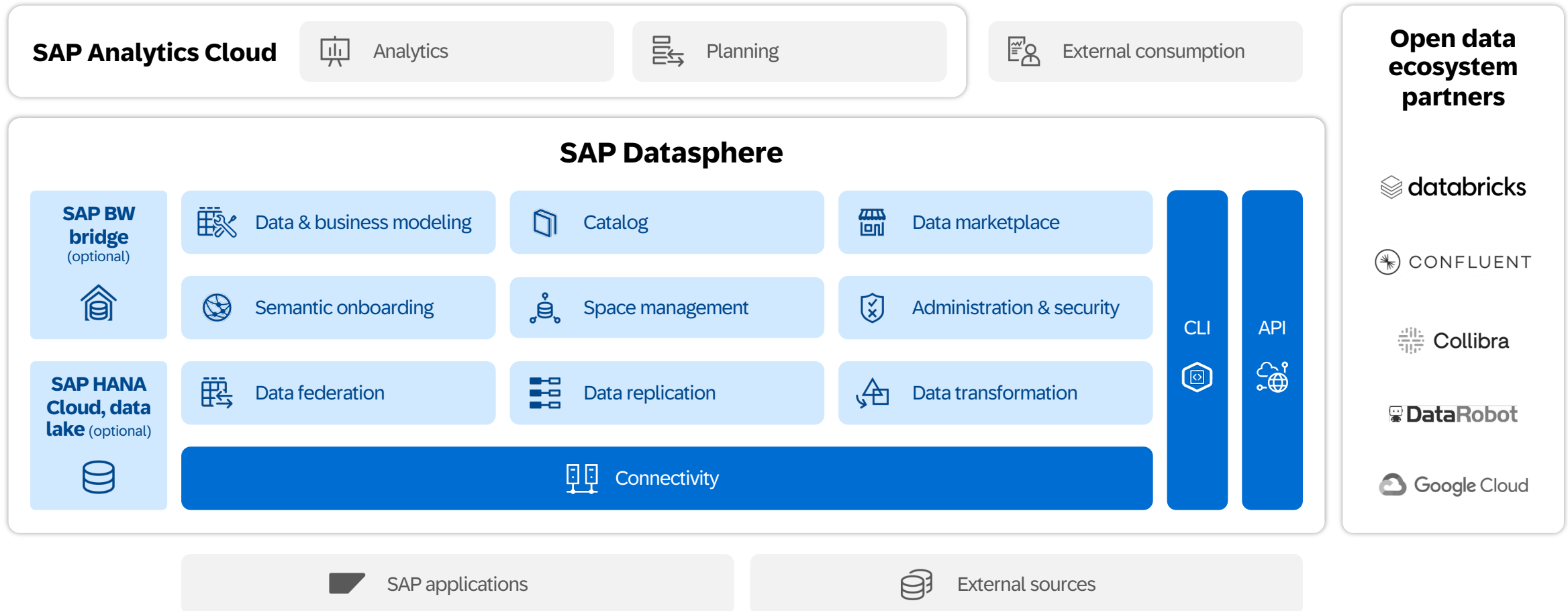


# **Business Fabric with Business Context**

Integrated, Simplified and with Open Data Partners



# SAP Datasphere overview



# **JustAsk**

Natural Language Processing and Gen AI

# Receive actionable insights instantly using natural language

Get actionable insights faster

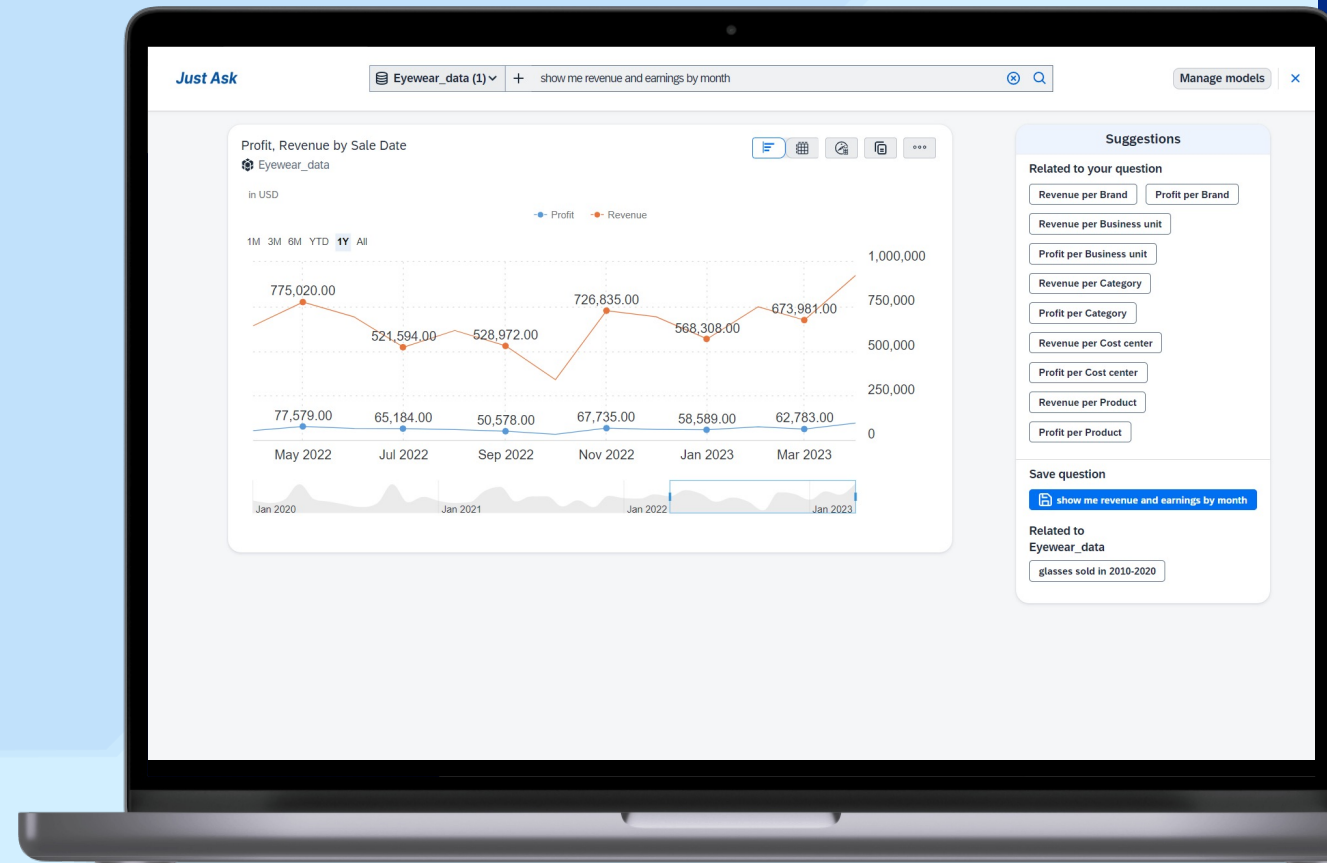
Retrieve relevant information from reliable sources

Seamless Integration of external data

Enable multi-lingual environments

➔ **Up to 25% improvement in information retrieval**

➔ **Up to 5% improvement in knowledge worker productivity**

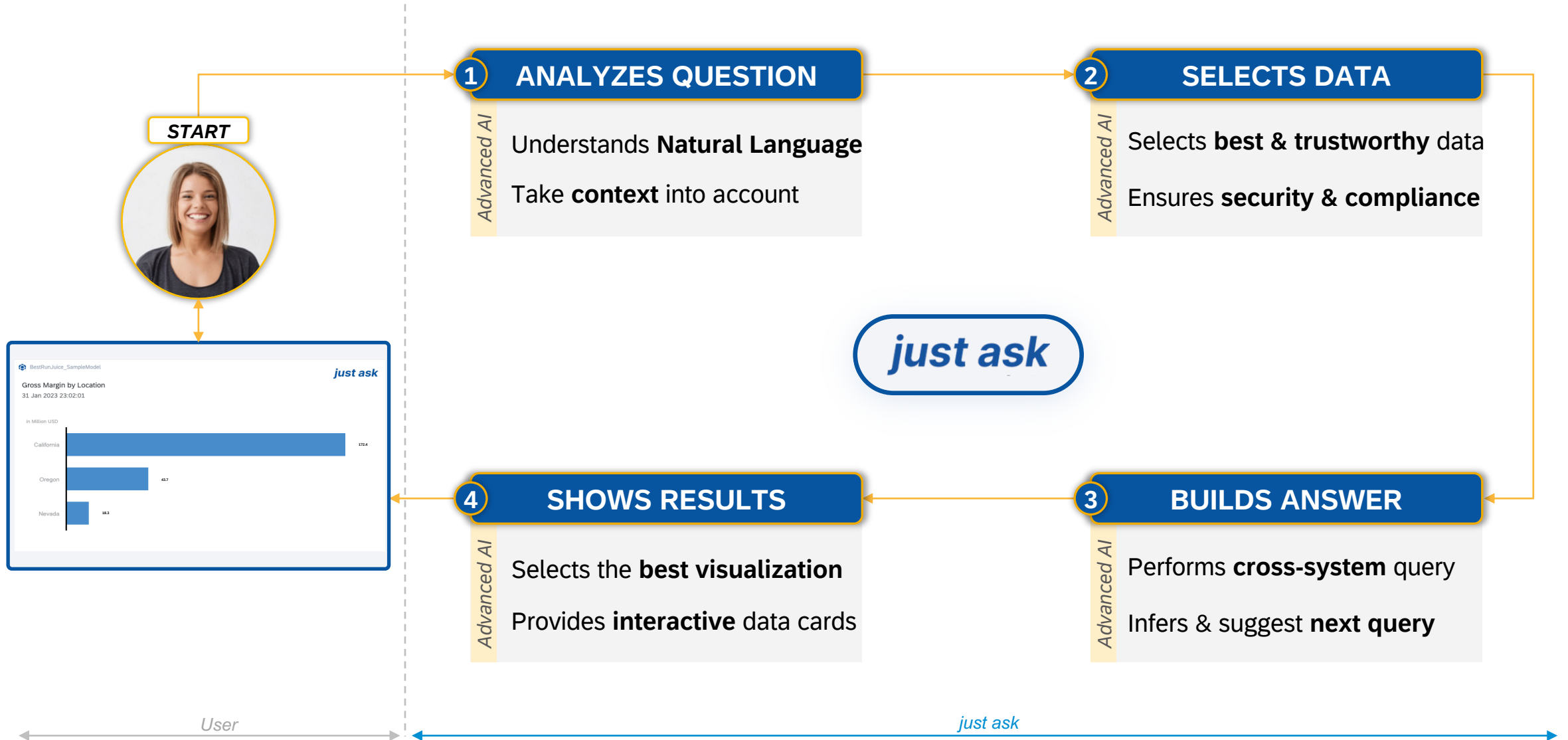


Just Ask in SAP Analytics Cloud



# Breaking the Barriers: Introducing **just ask**

The easiest way to find answers across data, powered by LLMs



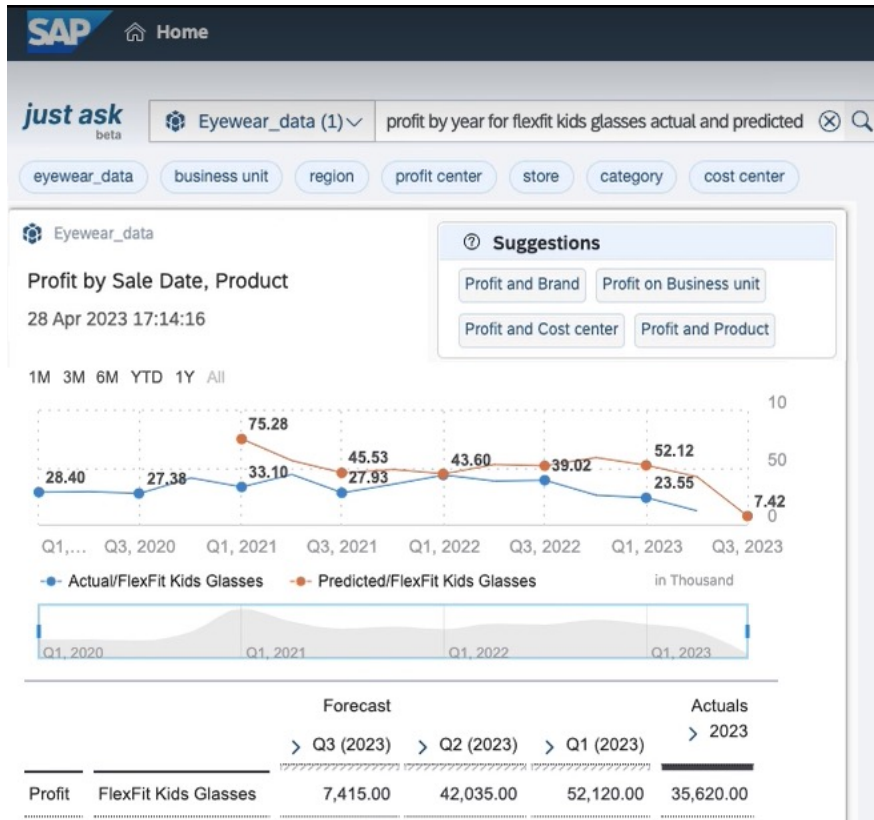
# Thank you.

Contact information:

Sharayu Kumatkar  
sharayu.kumatkar@sap.com



# Get insights into your business data using natural language queries



## CHALLENGE

- Business users have limited expertise to model and answer typical business questions
- Users' data exploration is limited to existing reports
- Existing "search to insight" feature based on keywords, English only

## SOLUTION

### Just Ask for SAP Analytics Cloud

- Understand user queries and deliver data in user-friendly way
- Simplify team collaboration and make data-driven decisions
- Retrieve and present data stored in SAP Analytics Cloud data models via natural language queries
- Search and chat with any data live, independent of its source system

## OUTCOMES

### Accelerate

Access to relevant insights

### Increase

Analytics adoption for the 70% occasional users

### Empower

Users to answer their business questions