



METROPOLITAN
UTILITIES DISTRICT

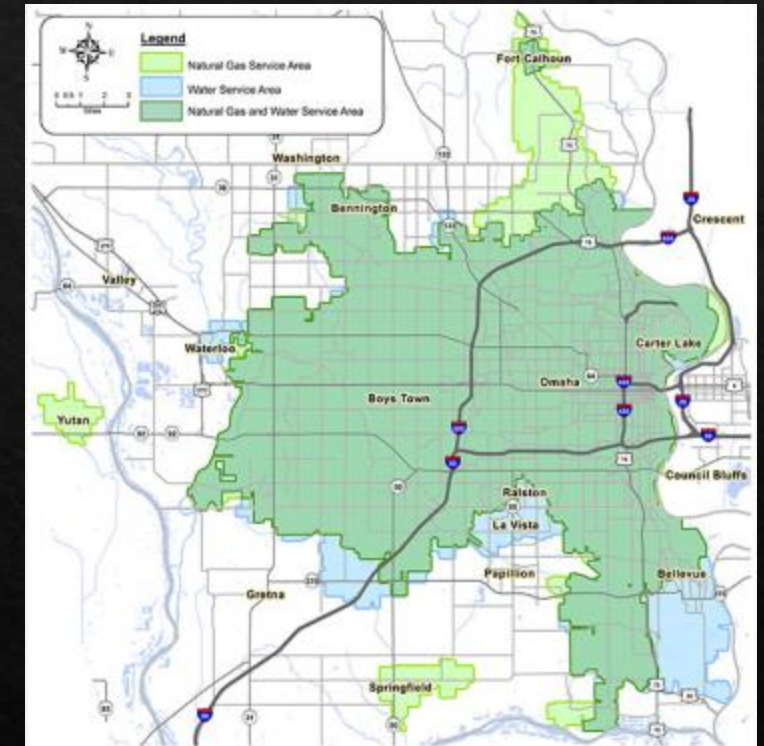
Open Text Extended ECM Integration with SAP

Charan Enugula

Ron Schell

About Metropolitan Utilities District

- ❖ 232,769 Natural Gas Customers
- ❖ 218,116 Water Customers
- ❖ SAP@MUD
 - 2007 FICO/Logistics
 - 2009 HCM
 - 2013 CRM
 - 2014 SF/Mobility Pilot
 - 2016 Click/Full Mobility/OpenText
 - 2018 MUDMAP/IM/ BW4/HANA
 - 2019 Customer Text Alerts/Integration of Lemur/
Employee Central/ SAP Analytics
 - 2020 Click FSE
 - 2021 Open Text Integration with SAP



What is extended ECM for SAP Solutions?

- ❖ Open Text ECM for SAP Solutions is a combination of content server modules, web services and an SAP package, which you can integrate Content Server functionality into SAP business processes.
- ❖ This includes functionality for document and records management, achieving, workflow and collaboration.

Why extended ECM for SAP Solutions?

- ◆ Creates a better way to work, connecting enterprise content and enterprise applications that benefits from a comprehensive digital platform which integrates into any SAP business application, either on prem or in the cloud.
- ◆ Extended ECM for SAP Solutions adds document management, collaboration, archiving and certified Records Management, along with application-spanning virtual views of related information to your business processes, providing a unique competitive advantage to organizations on the path to digital transformation.

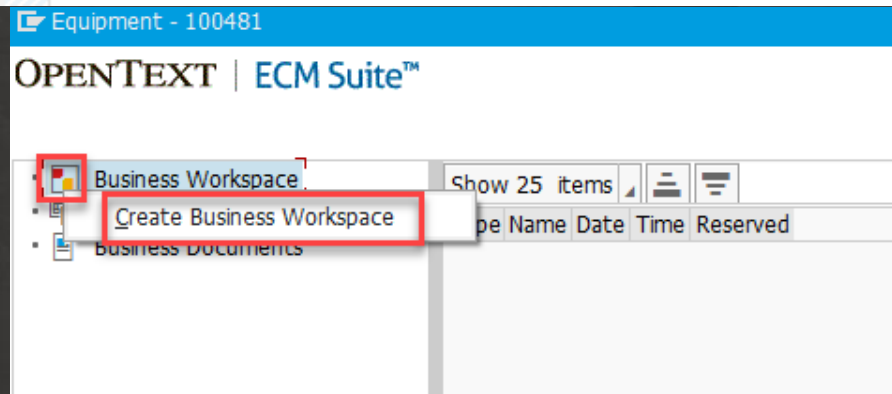
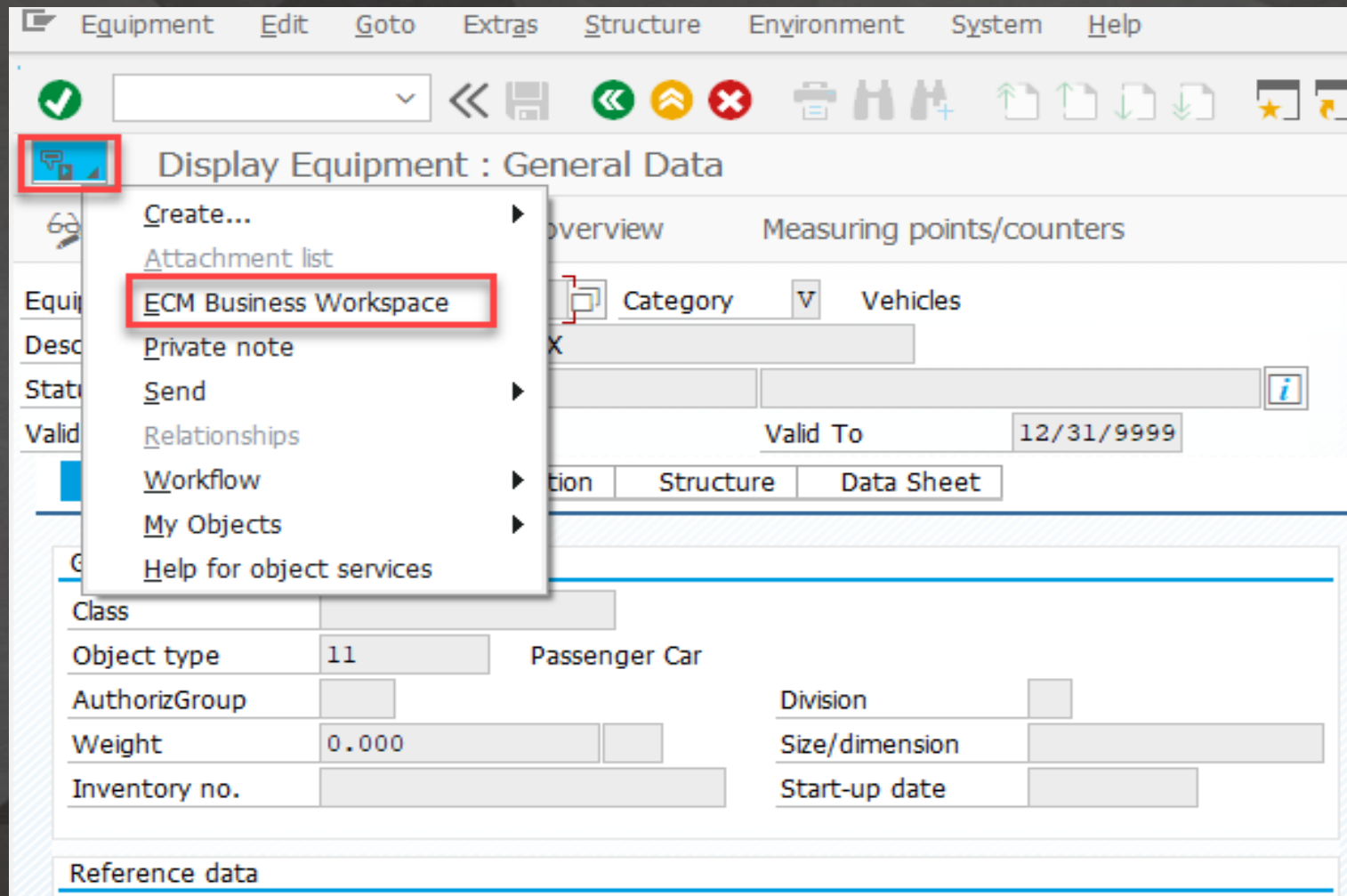
Business Workspaces

- ◆ A business workspace in Content Server contains content that is relevant for a business object.
- ◆ On the content server side, users can view data of the business object.
- ◆ From the business application, users can access Content Server items in the business workspace without leaving the system.

Demo of Extended ECM

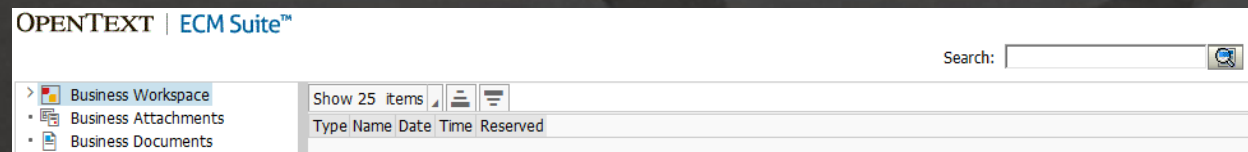
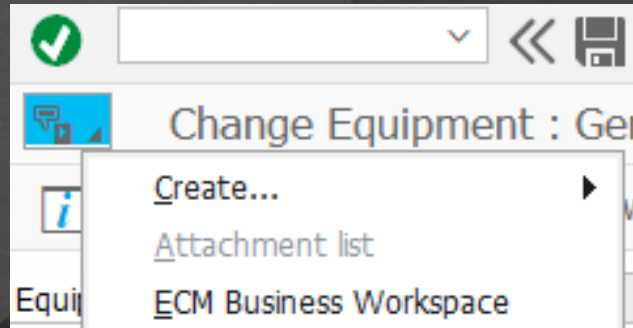
Creating business workspaces manually using Extended ECM

In Creating Business Workspaces, when a new equipment is created in SAP, the Business Workspace will automatically be created.

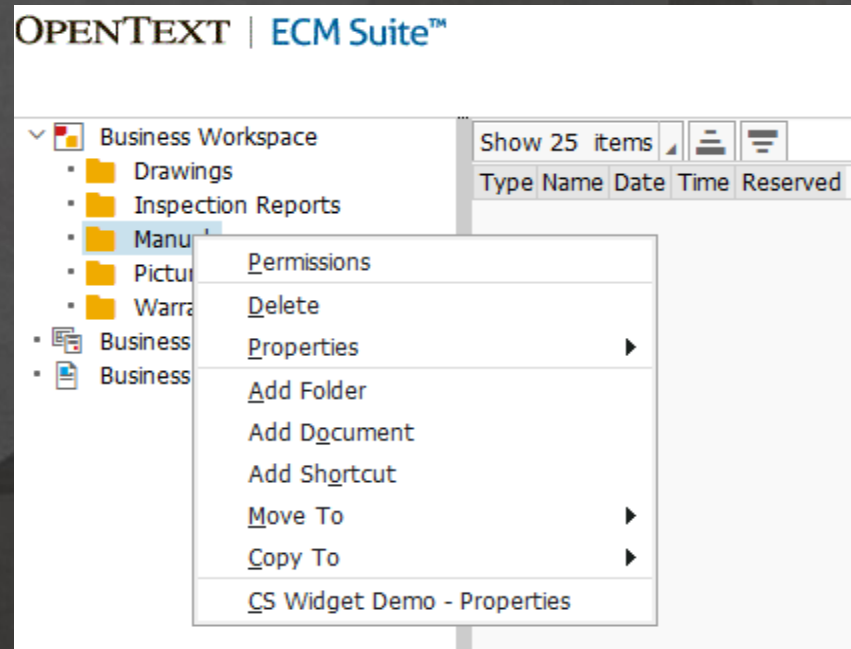


Attaching documents to equipment using Extended ECM

- ◆ The first way to attach a document is to log into SAP and enter the transaction code of IE02. This will enable you to change the document.



Attaching documents to equipment using Extended ECM



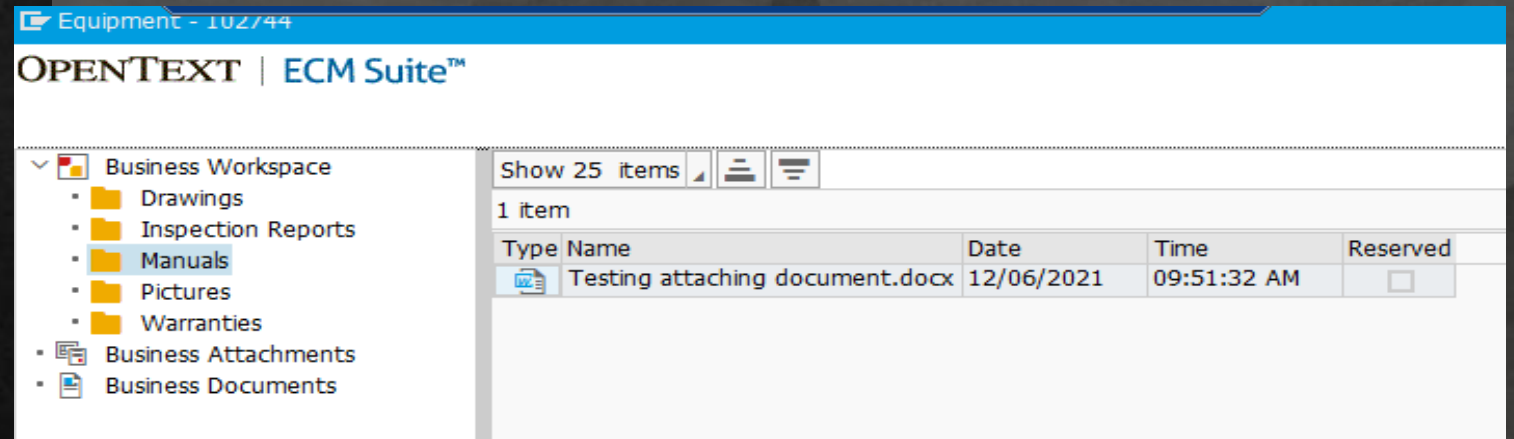
Attaching documents to equipment using Extended ECM

Add: Document - Internet Explorer

Document:	<input checked="" type="radio"/> Existing <input type="text"/> <input type="button" value="Browse..."/>
	<input type="radio"/> New <input type="text" value="Microsoft Word 2010"/>
Name:	<input type="text"/>
Description:	<input type="text"/>
Version Control:	<input checked="" type="radio"/> Standard - linear versioning <input type="radio"/> Advanced - major/minor versioning
Classifications:	<input type="text" value="Classify..."/> <input <="" td="" type="button" value="?"/>
Categories:	<input type="text"/> <input type="button" value="Edit..."/>
Create In:	<input type="text" value="Manuals"/> <input type="button" value="Browse Content Server..."/>
<input type="button" value="Add"/> <input type="button" value="Reset"/>	

Attaching documents to equipment using Extended ECM continued

◆ From this screen shot you can see the document was added to the manuals folder.



Equipment - 102744


OPENTEXT | ECM Suite™

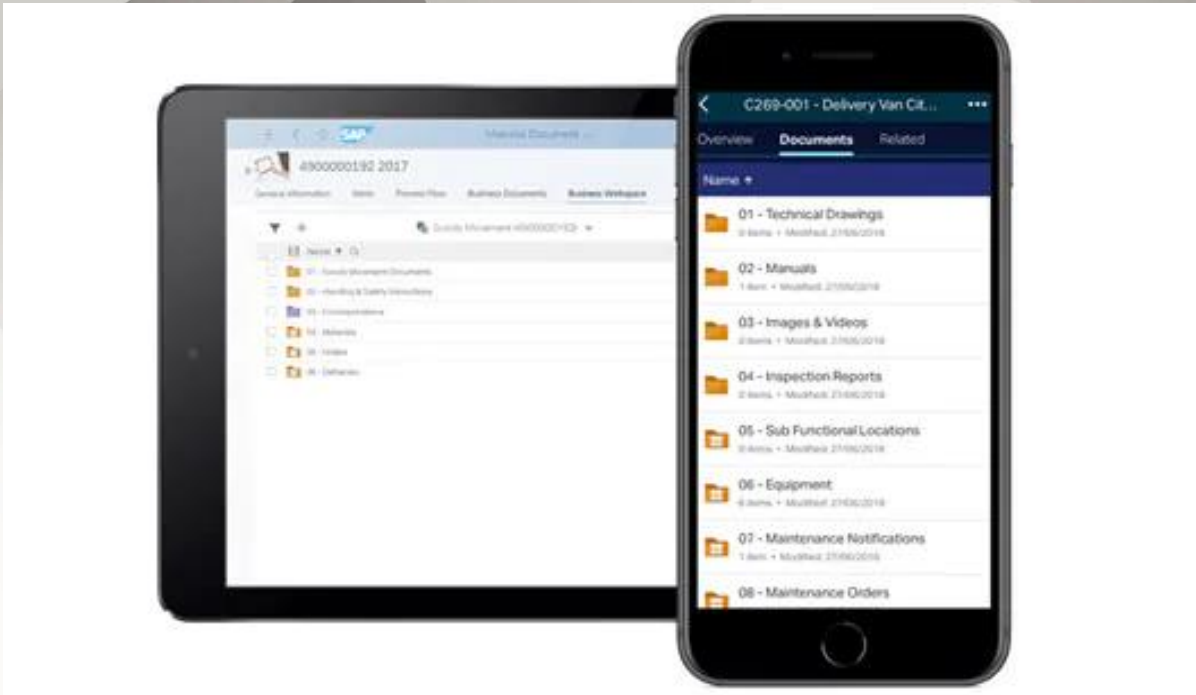
Business Workspace

- Drawings
- Inspection Reports
- Manuals
- Pictures
- Warranties
- Business Attachments
- Business Documents

Show 25 items

1 item

Type	Name	Date	Time	Reserved
	Testing attaching document.docx	12/06/2021	09:51:32 AM	<input type="checkbox"/>



Benefits

- ◇ Cloud – readiness
- ◇ Mobile access to business related information.
- ◇ Seamless content retrieval.
- ◇ Best in class document management.
- ◇ Allows collaboration for internal and external teams.

Challenges

- ◆ Had the challenge to get the https: protocol to work with extended ECM.
- ◆ Challenge of the systems not set up the same causing some issues.
- ◆ Drag and drop of documents was not working as expected.

Thank you

Questions?