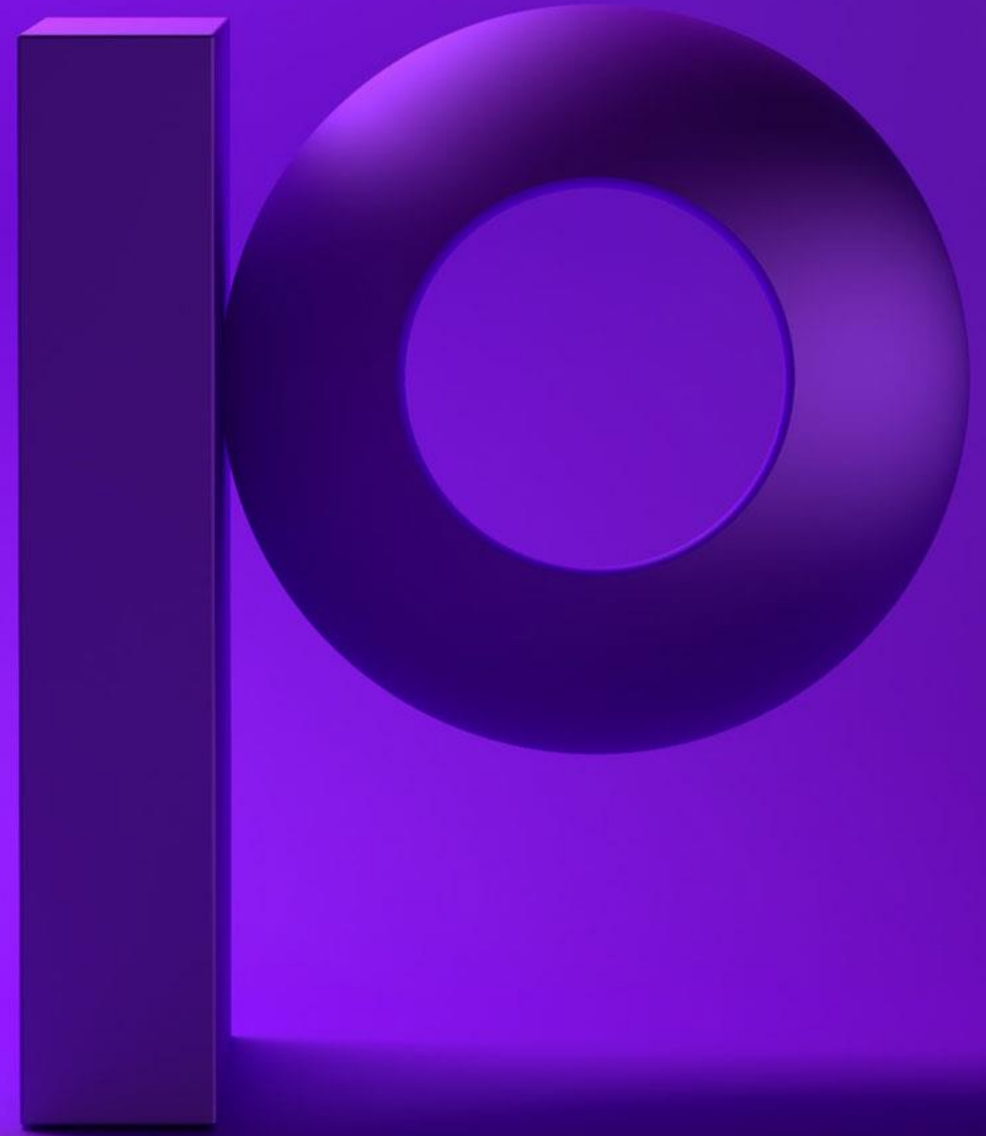


precisely

Change the way you
work with SAP through
automation



Winshuttle is now
part of Precisely,
the leader in data
integrity

The logo for Precisely features the word "precisely" in a white, lowercase, sans-serif font. The letter "p" is a simple vertical bar. The letter "o" is a large, 3D-rendered ring with a dark purple-to-black gradient and a white highlight on its top edge. The letters "r", "e", "c", "i", "s", "e", and "l" are in the same white font as the "p". The letter "y" is also in the same white font and has a long, thin tail that extends downwards. The entire logo is set against a dark purple background that has a subtle gradient and a soft shadow cast by the 3D "o" ring.



The leader in data integrity

Our software, data enrichment products and strategic services deliver accuracy, consistency, and context in your data, powering confident decisions.

12,000

customers

99

of the Fortune 100

100

countries

2,500

employees

Brands you trust, trust us



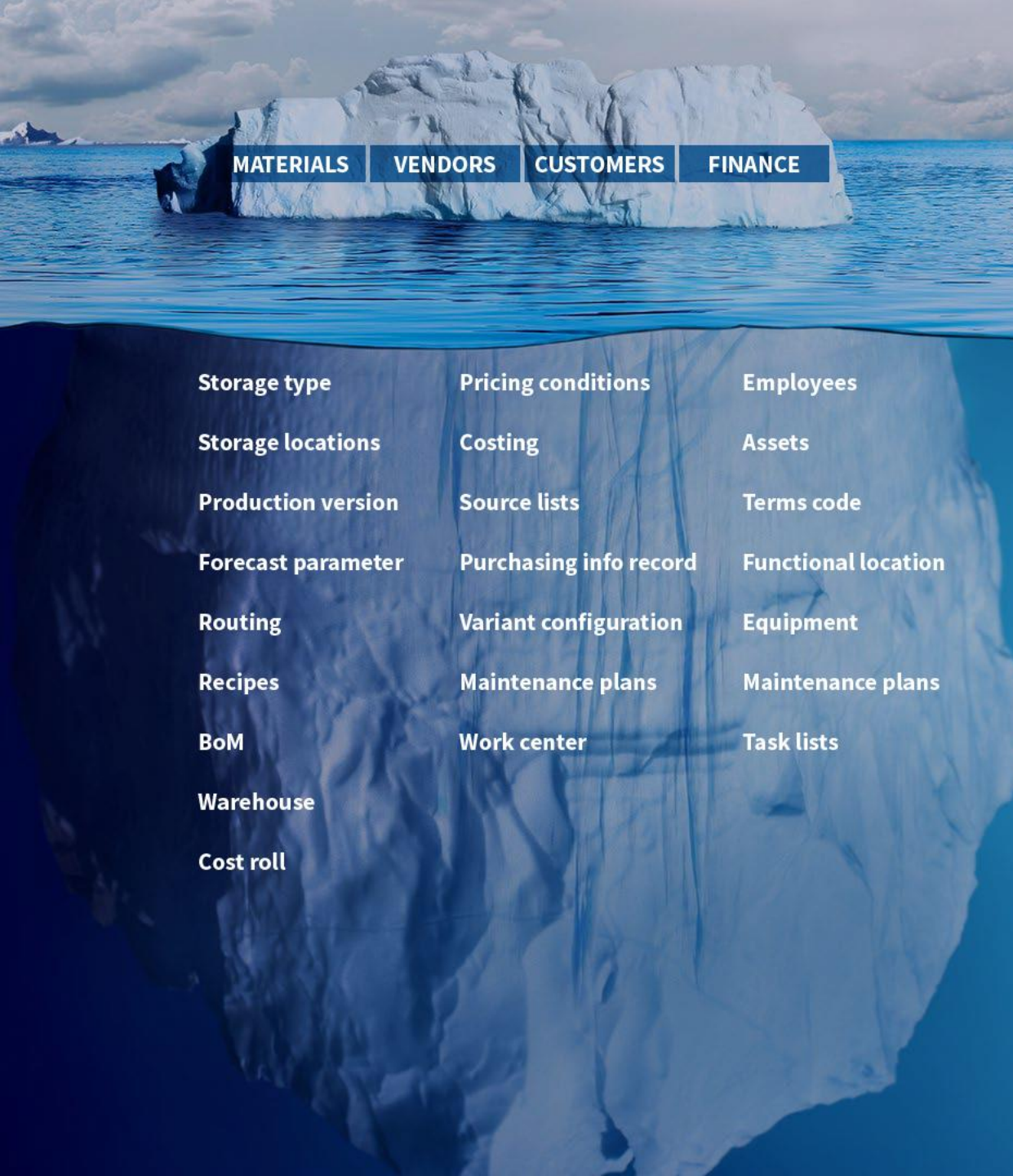
Data leaders partner with us



Why Automate?

Increase revenue streams

Decrease costs



MATERIALS

VENDORS

CUSTOMERS

FINANCE

Storage type

Pricing conditions

Employees

Storage locations

Costing

Assets

Production version

Source lists

Terms code

Forecast parameter

Purchasing info record

Functional location

Routing

Variant configuration

Equipment

Recipes

Maintenance plans

Maintenance plans

BoM

Work center

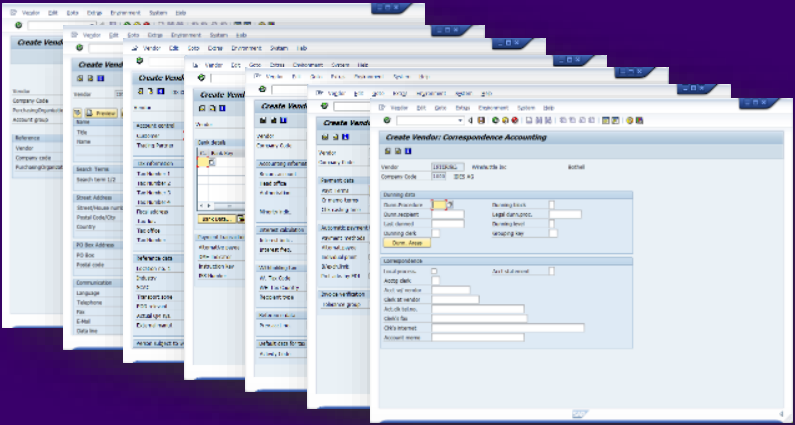
Task lists

Warehouse

Cost roll

The complexity of SAP master data drive a need for automation with respect to both

Reduce Costs Replace multiple SAP screens with automated scripts



Run completed. Successful runs: 14

No.	RUN LOG	VALIDATE LOG	*Material Number (uses external numbering)	*Industry sector	*Material Type	*Material (Sh
1	Material DEMOMATERIAL-0003 created	Success	DEMOMATERIAL-0003	F	FERT	Demo Ma
2	Material DEMOMATERIAL-0004 created	Success	DEMOMATERIAL-0004	F	FERT	Demo Ma
3	Material DEMOMATERIAL-0005 created	Success	DEMOMATERIAL-0005	F	FERT	Demo Ma
4	Material DEMOMATERIAL-0006 created	Success	DEMOMATERIAL-0006	F	FERT	Demo Ma
5	Material DEMOMATERIAL-0007 created	Success	DEMOMATERIAL-0007	F	FERT	Demo Ma
6	Material DEMOMATERIAL-0008 created	Success	DEMOMATERIAL-0008	F	FERT	Demo Ma
7	Material DEMOMATERIAL-0009 created	Success	DEMOMATERIAL-0009	F	FERT	Demo Ma
8	Material DEMOMATERIAL-0010 created	Success	DEMOMATERIAL-0010	F	FERT	Demo Ma
9	Material DEMOMATERIAL-0011 created	Success	DEMOMATERIAL-0011	F	FERT	Demo Ma
10	Material DEMOMATERIAL-0012 created	Success	DEMOMATERIAL-0012	F	FERT	Demo Ma

Explosion of data to drive revenue generation

Data is the fuel for decision-making today



\$1.3 trillion spent
on digital transformation
last year



80% of CEOs
accelerating digital
transformation



67% spending
more on technology
than people

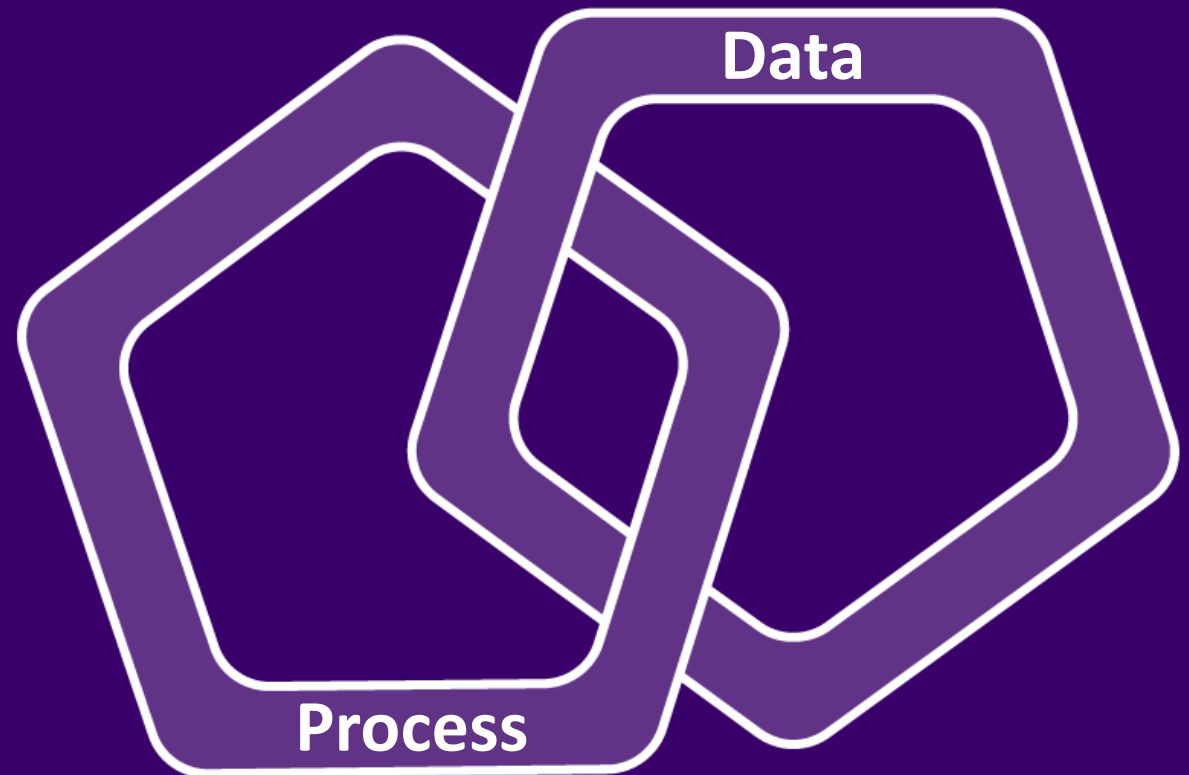


64 Zetabytes
of data today,
growing to 180+
zetabytes by 2025

Process and data have to be tackled together

- Product launches
- Product data management
- Customer onboarding & management
- Vendor onboarding & management
- Asset management
- Financial master data

and more...



Compete and thrive in today's dynamic world



Go faster



Be more agile



Improve the quality of your most important data



Precisely Automate portfolio

Automate Studio

STANDALONE

Exchange data with SAP quickly and easily using Excel

- Data creation and maintenance
- Data migration
- Operational reporting
- Data stewardship

Business users work in Excel



Automate Studio Manager

GOVERNED

Share, manage, & control Precisely across the enterprise

- Basic 2-step workflow
- Centralized management
- Granular control of licenses, users & policies
- Extensive audit and ROI reporting
- Server-side job execution

Business users work in Excel



Automate Evolve

WORKFLOW-ENABLED

Automate and streamline SAP processes using workflows

- Advanced form and workflow capabilities
- Advanced data stewardship capabilities via web forms
- Detailed process analytics

Business users work in Excel or web forms

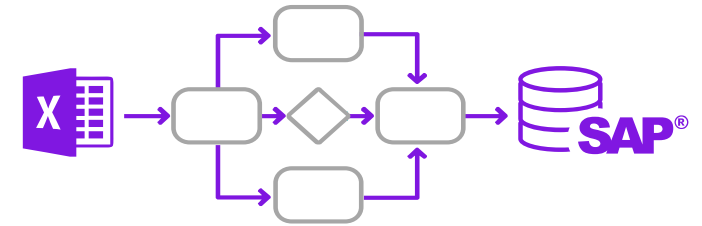


Automate Evolve

Includes Automate Studio—our market leading SAP master data automation platform

Automate and streamline SAP business processes using workflows

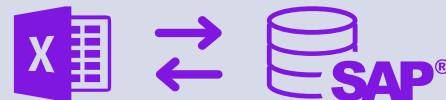
- Advanced form and workflow capabilities
- Advanced data stewardship capabilities via web forms
- Detailed process analytics



Automate Studio

Exchange data with SAP quickly and easily using Excel

- Data creation and maintenance
- Data migration
- Operational reporting
- Data stewardship



Share, manage, & control Precisely solutions across the enterprise

- Centralized content management
- Granular control of licenses, users & policies
- Extensive audit and ROI reporting
- Server-side job execution



What's next for SAP automation in Moving to S4 HANA?



Integration into
larger, complex
processes



Incorporation of
AI and machine
learning



Automating Fiori
processes

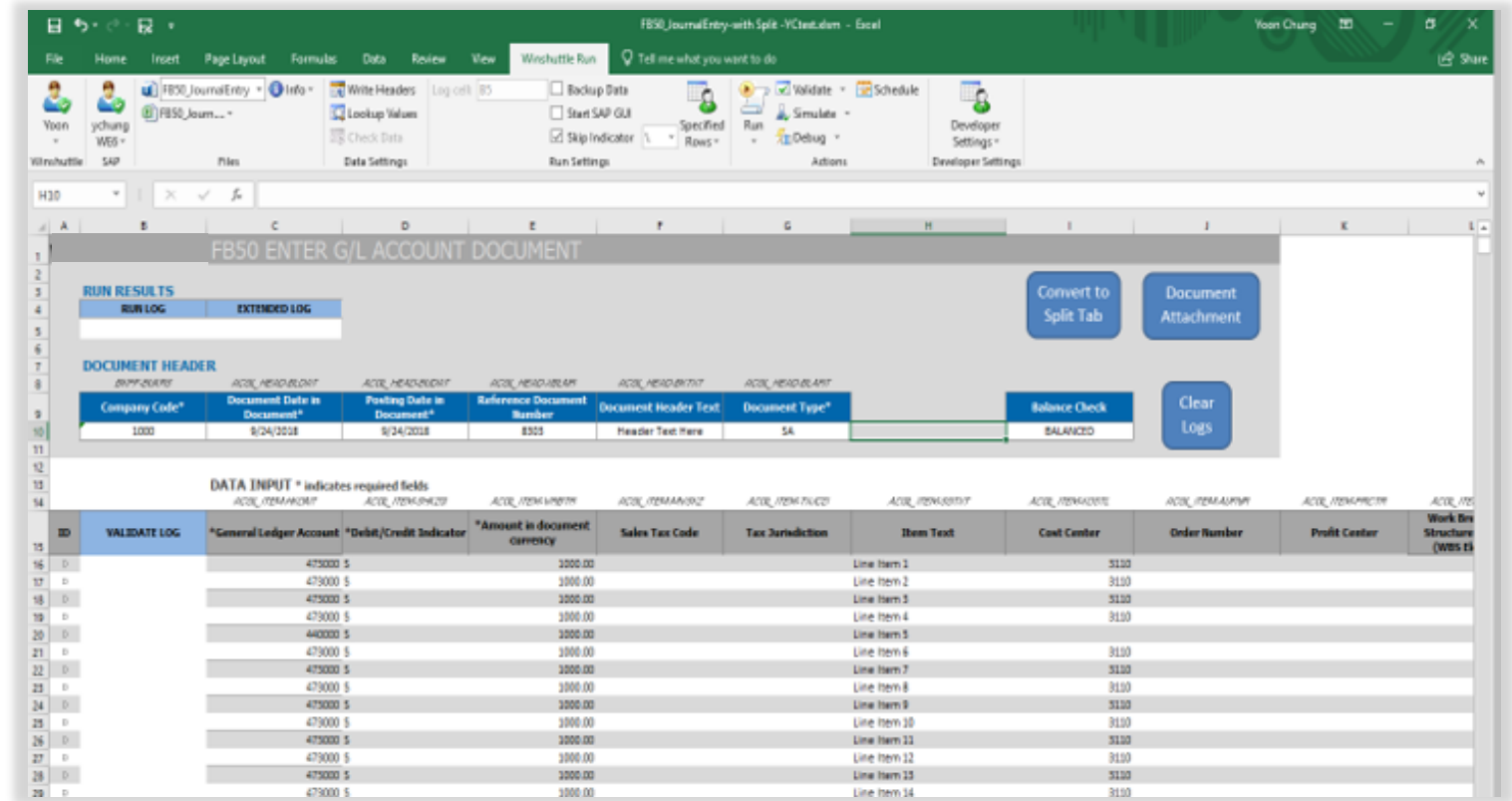


Manage SAP data using Excel

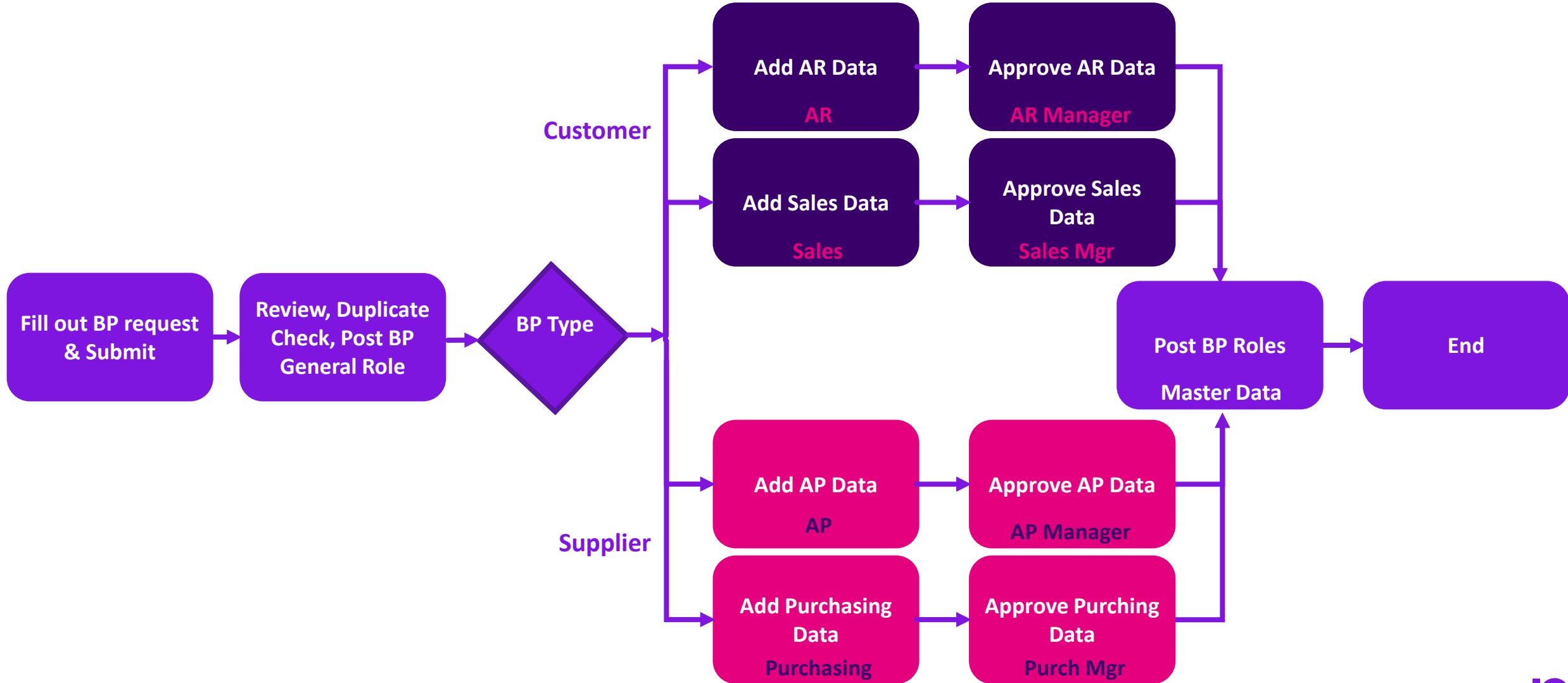
Why stop using a favorite tool of the business to do mass processing?

SAP S/4HANA MODULES

- Requires specific training
- Tiresome manual processes, no matter the interface
- Complex multi-screen transactions and processes, no matter the interface
- “Business Partner is a bear”



Business Partner process flow



SAP Fiori Automation



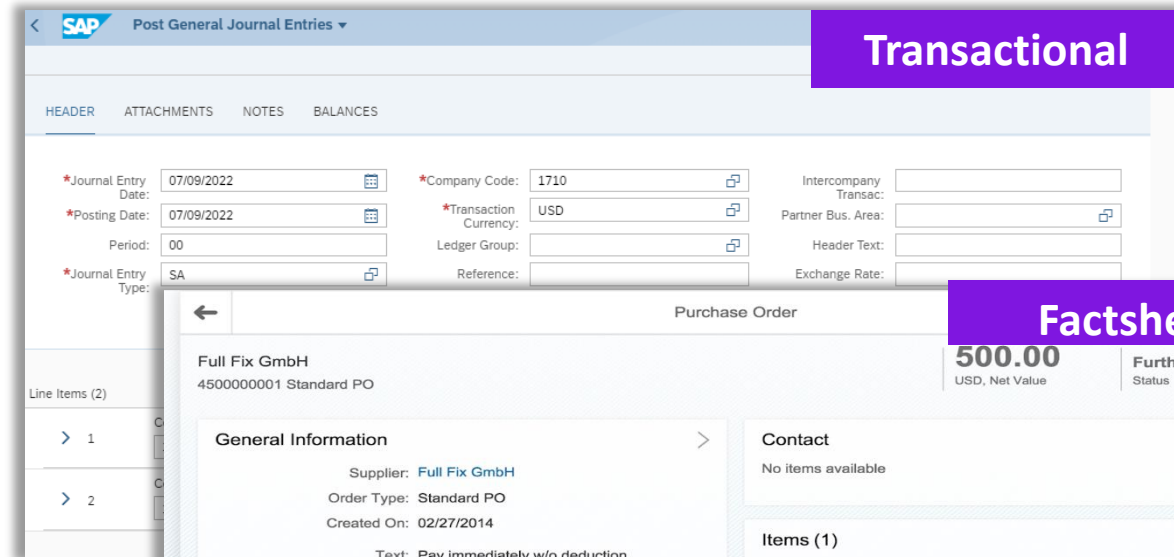
SAP Fiori

Fiori Apps provide a simplified, modern web-based interface

Fiori App types

- Transactional – perform data input/maintenance tasks, ex: create sales order, PO, journal entry and also master data, like BP or product
- Factsheet - display contextual information and key facts about objects, often allows drilldown
- Analytical – role-based insights into real-time operations via charts/graphs

We are targeting
Transactional apps for Fiori
automation



Transactional

Post General Journal Entries

HEADER ATTACHMENTS NOTES BALANCES

*Journal Entry Date: 07/09/2022 *Company Code: 1710 Intercompany Transac: Partner Bus. Area: Header Text: Exchange Rate:

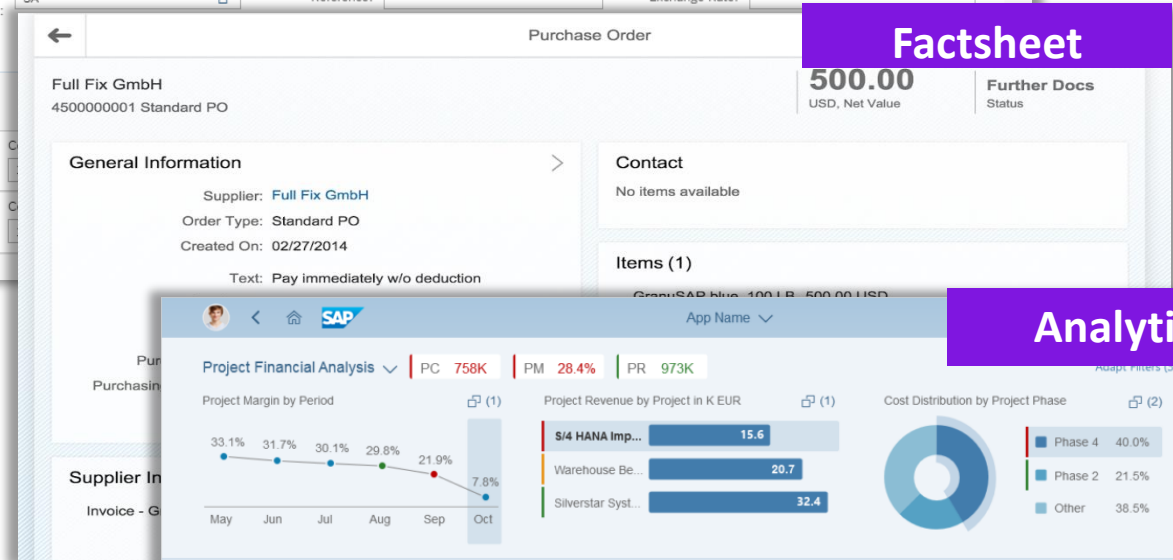
*Posting Date: 07/09/2022 *Transaction Currency: USD Ledger Group: Reference: Exchange Rate:

Period: 00 Journal Entry Type: SA

Line Items (2)

> 1

> 2



Factsheet

Purchase Order

Full Fix GmbH
4500000001 Standard PO

500.00 USD, Net Value Further Docs Status

General Information

Supplier: Full Fix GmbH
Order Type: Standard PO
Created On: 02/27/2014

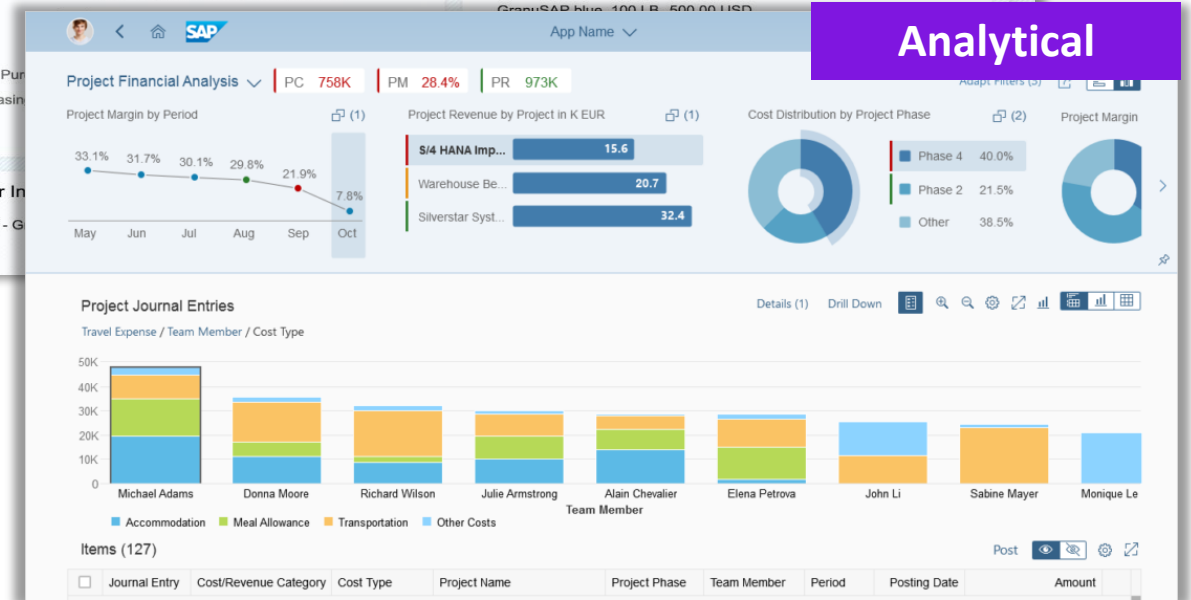
Contact

No items available

Items (1)

Text: Pay immediately w/o deduction

Group SAP Net 100 LB 500.00 USD



Analytical

Project Financial Analysis

PC 758K | PM 28.4% | PR 973K

Project Margin by Period

33.1% 31.7% 30.1% 29.8% 21.9% 7.8%

Project Revenue by Project in KEUR

S/4 HANA Imp... 15.6
Warehouse Be... 20.7
Silverstar Syst... 32.4

Cost Distribution by Project Phase

Phase 4 40.0%
Phase 2 21.5%
Other 38.5%

Project Journal Entries

Travel Expense / Team Member / Cost Type

50K 40K 30K 20K 10K 0

Michael Adams Donna Moore Richard Wilson Julie Armstrong Alain Chevalier Elena Petrova John Li Sabine Mayer Monique Le

Accommodation Meal Allowance Transportation Other Costs

Items (127)

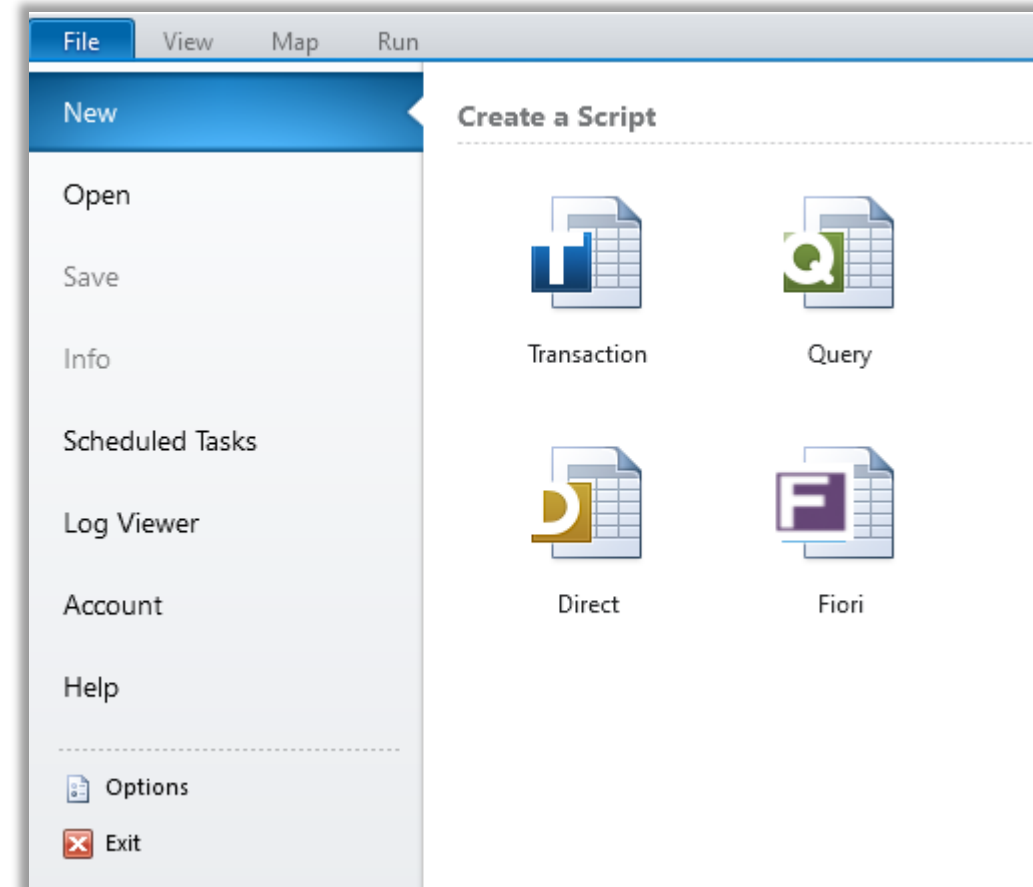
Journal Entry Cost/Revenue Category Cost Type Project Name Project Phase Team Member Period Posting Date Amount

SAP Fiori App Automation

We're announcing our automation for Fiori Apps

Automation targets, regardless of in the interface:

- Repetitive tasks
- Higher volume
- Complexity – find object, open object, click edit, click tab, scroll down, drill down, etc.
- Need for efficiency, accuracy, consistency & performance improvements



Questions!