



ASUG Boise Chapter Meeting - October 2022

SAP Business Technology Platform

Chris Ritterhern

Business Technology Platform Center of Excellence Lead

c.ritterhern@sap.com / M: 949-742-2427 (txt'ing is fine) / L: PST Timezone



THE BEST RUN

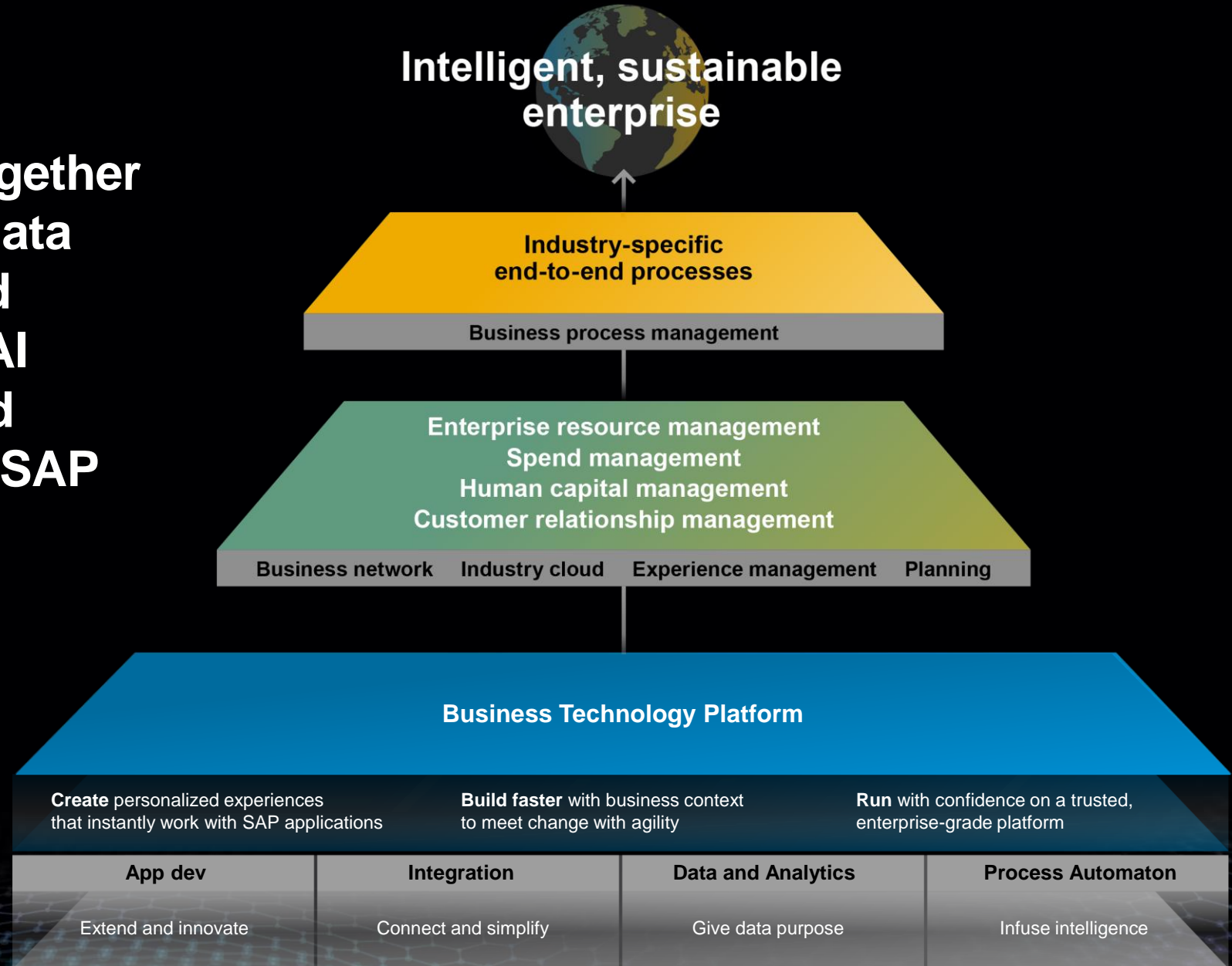


Agenda

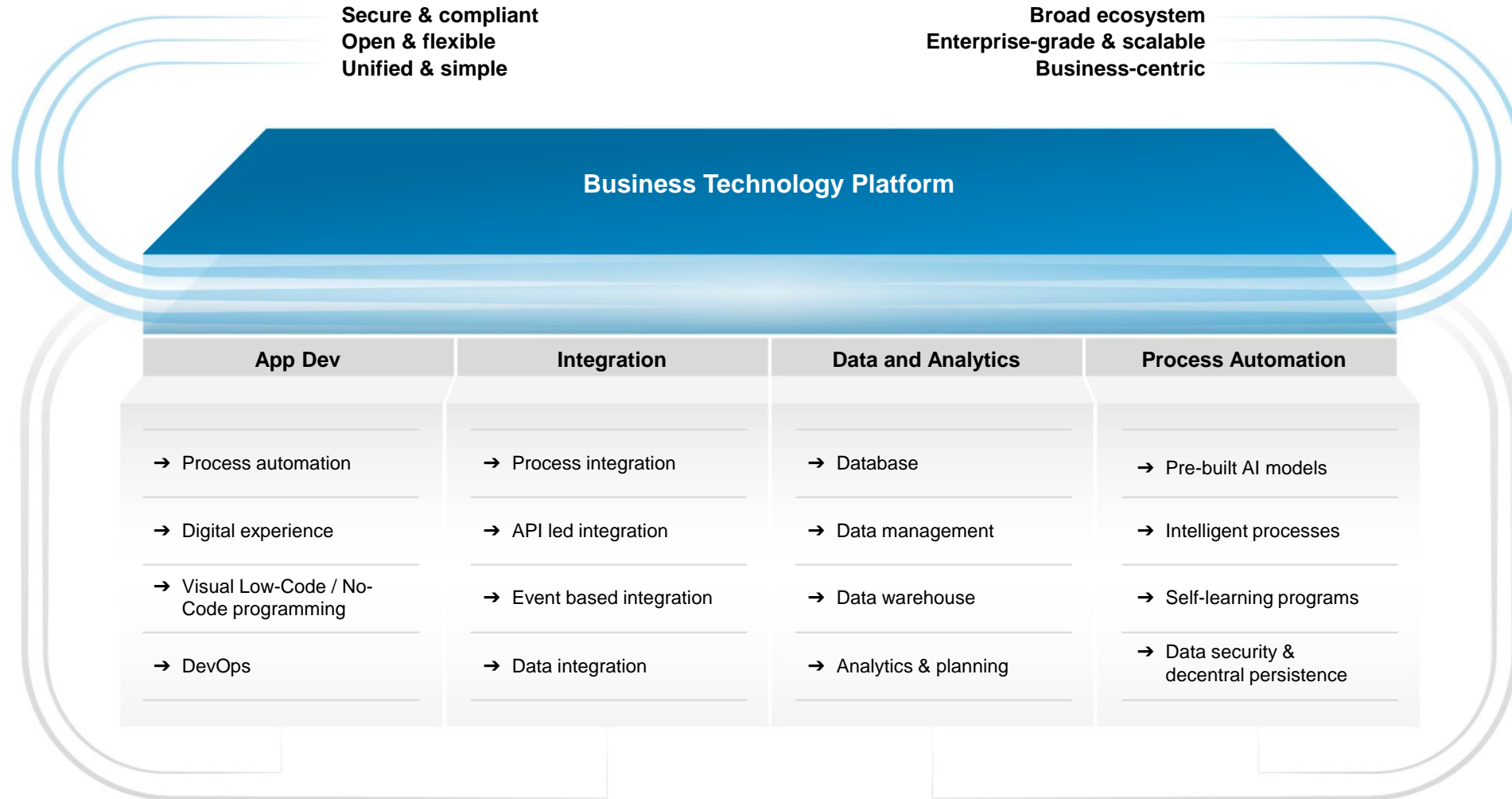
- **Overview of BTP**
- **BTP as used in a process flow - example**
- **Development Studio**
- **Integration Suite**
- **Data Management & Analytics**
- **Process Automation aka Workflow, RPA**

SAP BTP

The platform that brings together application development, data management, analytics and planning, integration, and AI capabilities into one unified environment optimized for SAP applications.



SAP BTP Cloud Capabilities

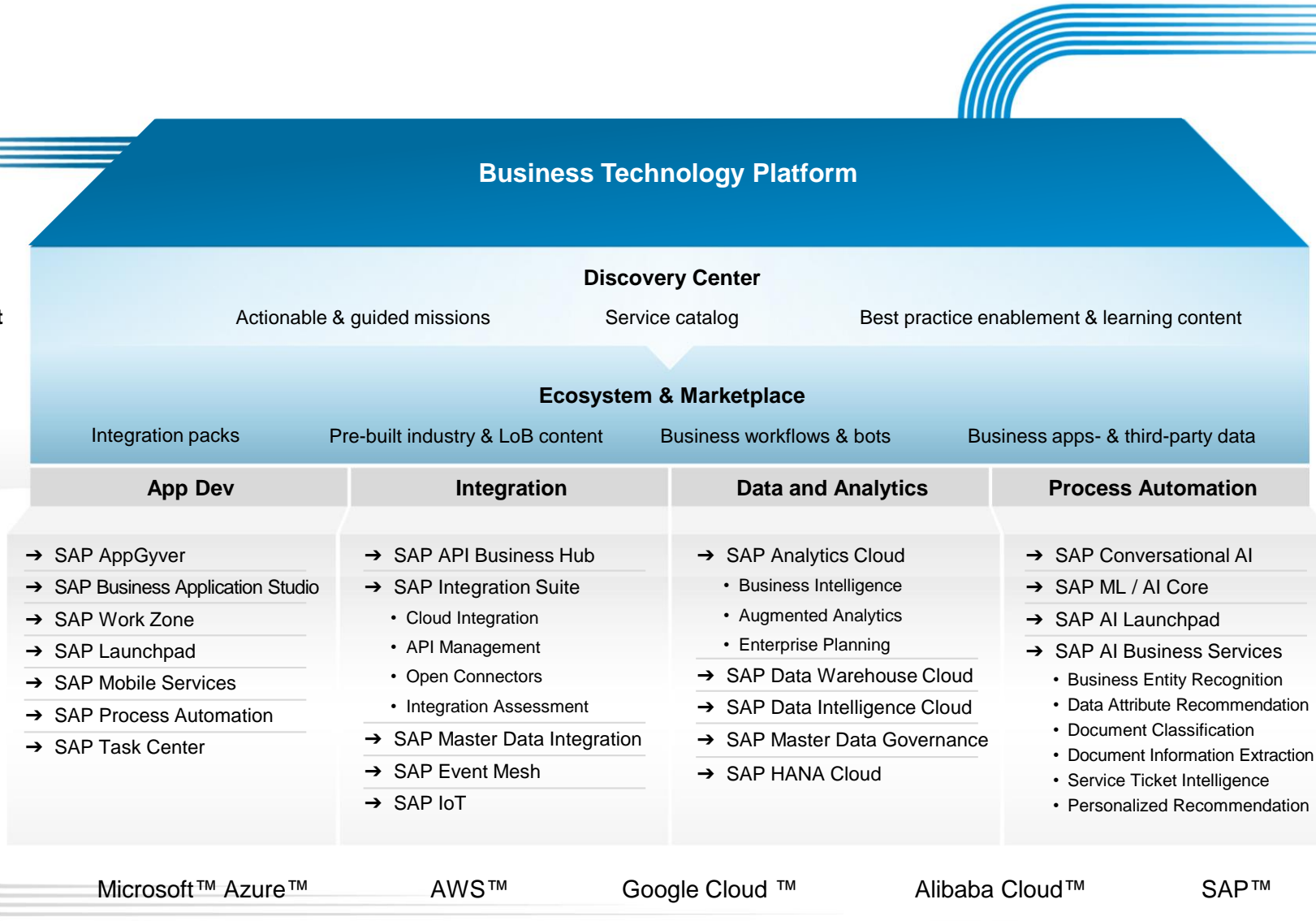


SAP BTP Cloud Services



Enterprise readiness with holistic lifecycle management

- Change and deployment management
- Technical ops automation
- Alerting
- Smooth integration option into existing ALM processes



Enterprise security services and hybrid identity & access management

- Cloud identity services
- Risk & compliance
- Secure development

All-In Adoption – BTP Extend – Innovate ...

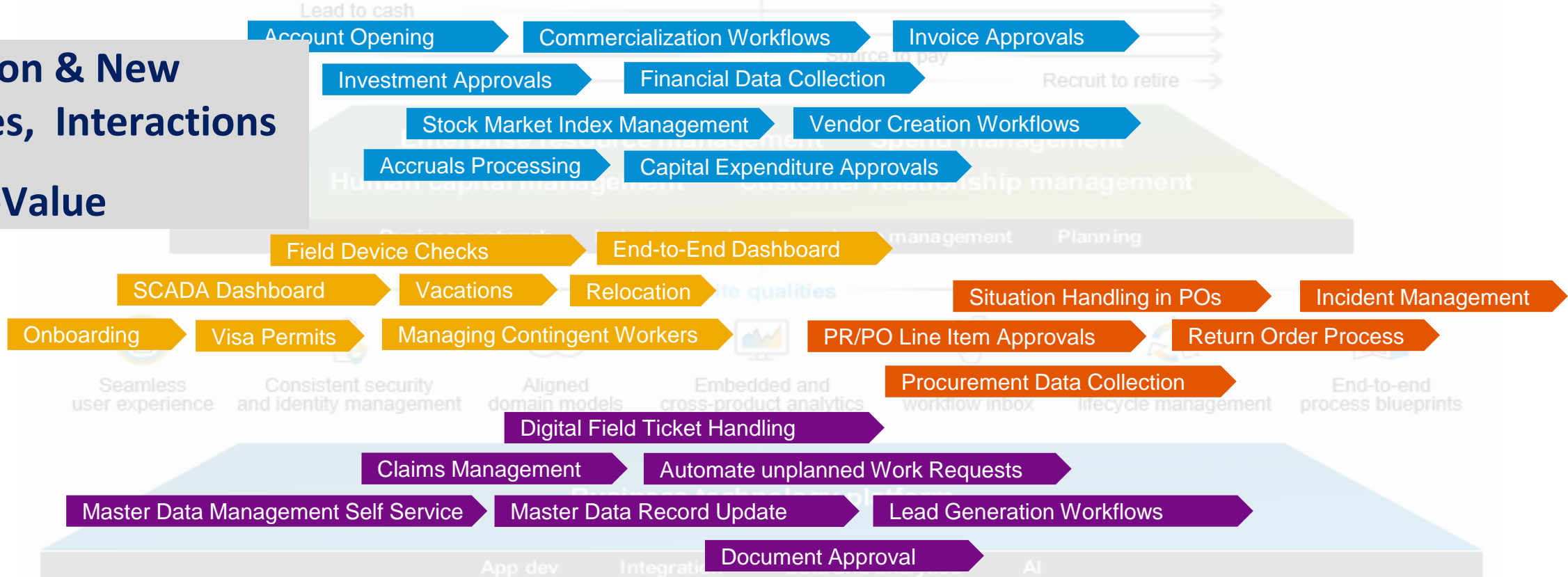
Intelligent, sustainable enterprise

70%

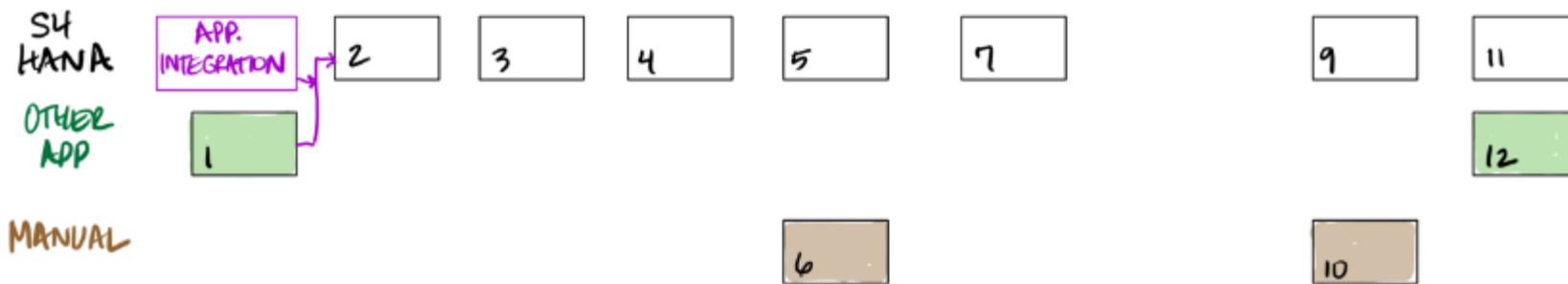
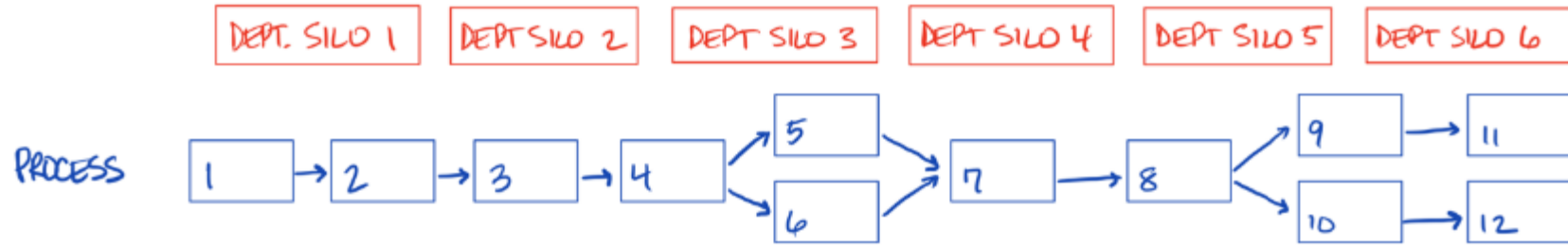
STANDARD BUSINESS PROCESS



Innovation & New Processes, Interactions
Time-to-Value



ORDER-TO-CASH (OR ANY OF THE PRIMARY BUSINESS PROCESSES LIKE RECRUIT TO RETIRE, DESIGN TO OPERATE, ETC)

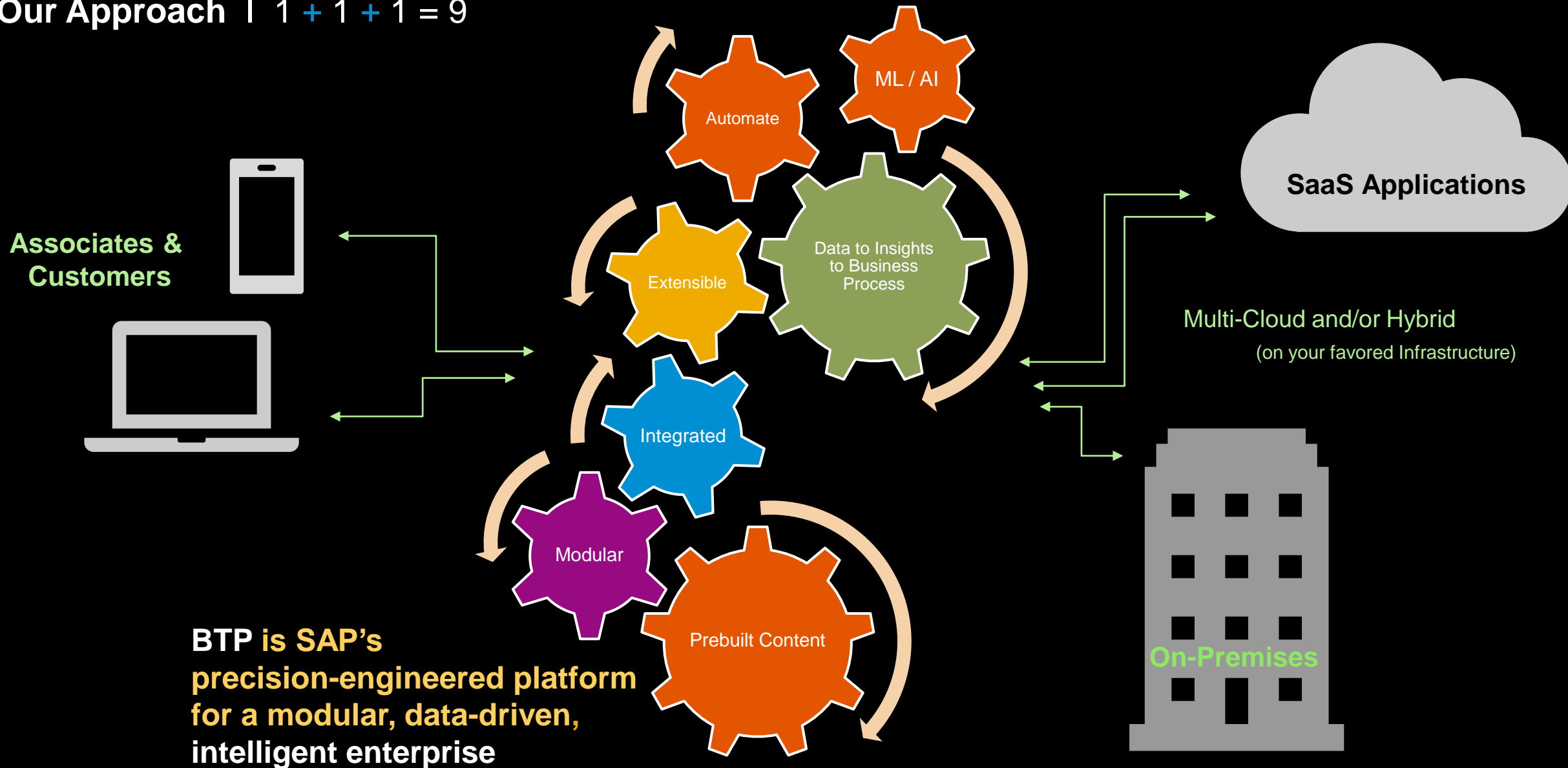


BTP

* EVERYTHING PURPLE / PINK IS BTP
ADDING VALUE TO THE BUSINESS PROCESS.



Our Approach | 1 + 1 + 1 = 9



- 1) **Development Studio**
- 2) **Integration Suite**
- 3) **Data Fabric**
- 4) **Process Automation aka
Workflow, RPA**

CLEAN CORE

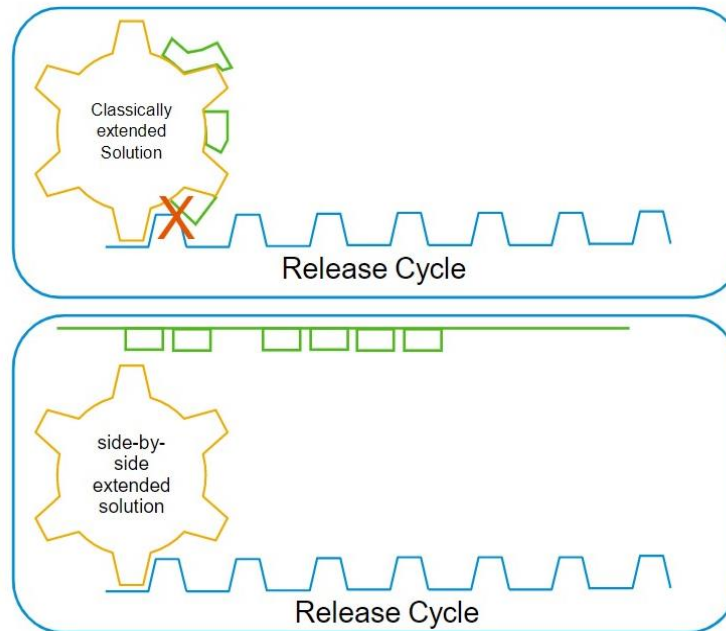
A new extensibility framework for the Intelligent Enterprise

In the past SAP allowed customers to create **custom codes/extensions** in ECCs to cover customer specific requirements

Custom codes has to main side effects: it will make **the innovation adoption complex and slower** (as consequence of limited compatibility with new software releases) and it **increase the TCO** (as consequence to maintain and update the customization)

In a context where **agility and speed** is key to support the business evolution, this is no longer tolerable

- SAP has developed a new **extensibility framework** that allows to cover the customer specific needs without compromising the adoption of the innovations coming from the standard evolutions



highly extended solutions

lead to

high costs and effort for upgrades

results in

long upgrade cycles

mean

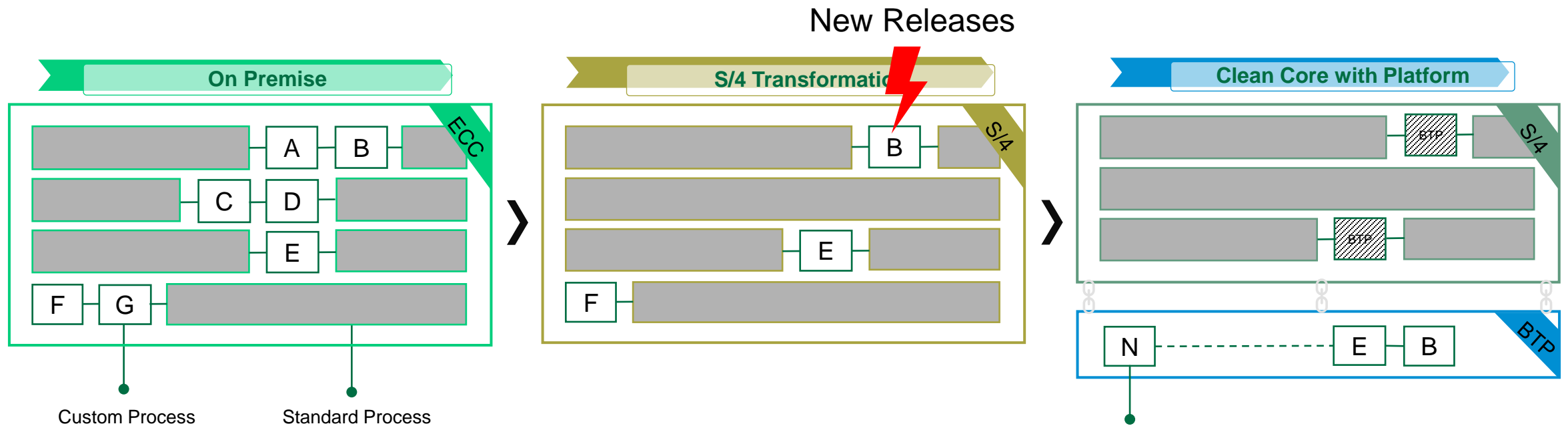
waiting for innovations delivered in solution

Solution:

externalizing modifying extensions

- The **key element** of the new extensibility framework is the **Business Technology Platform (BTP)** that allows a side-by-side development and keep the “Core Clean”

What it means to have a “Clean Core”



Value Drivers

Speed and Innovation

Be able to absorb innovation delivered by SAP at a faster rate and react fast on changing business requirements

TCO

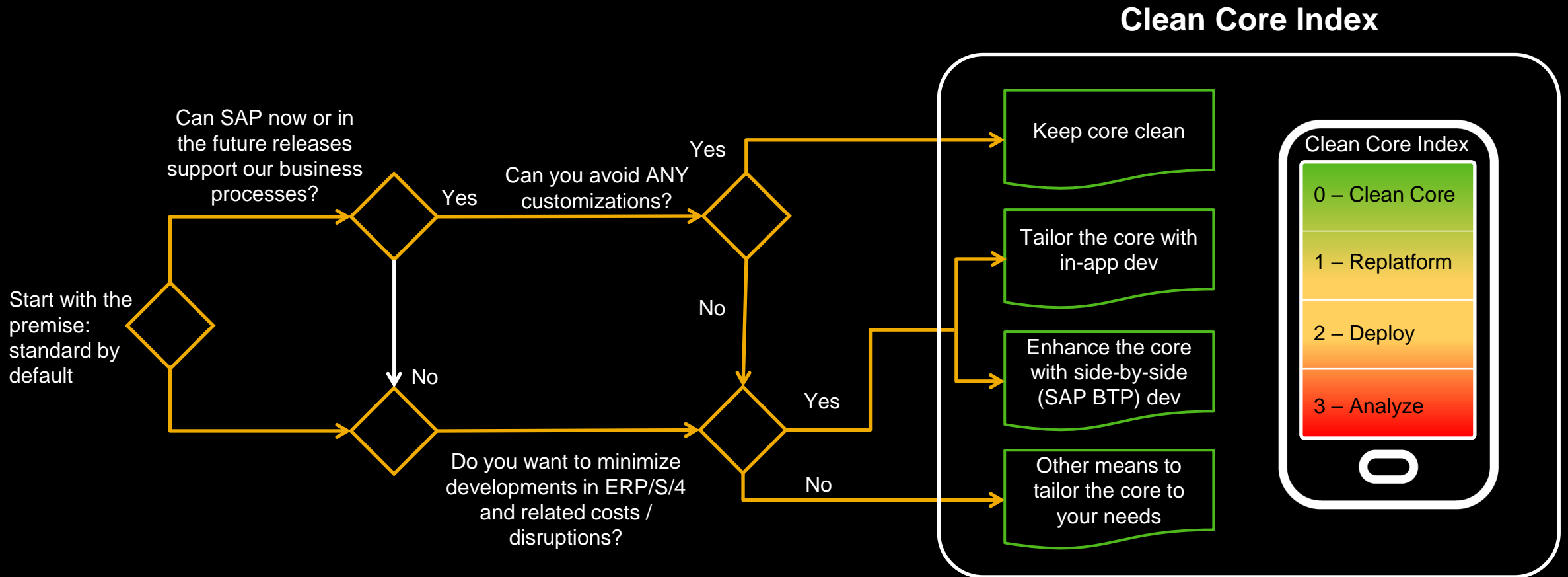
Reduce TCO by making upgrades eventually non-events from a custom code point of view

Cloud Ready

If you run your SAP S/4HANA system on premise – already lay the foundation today to move to the cloud from a custom extension perspective

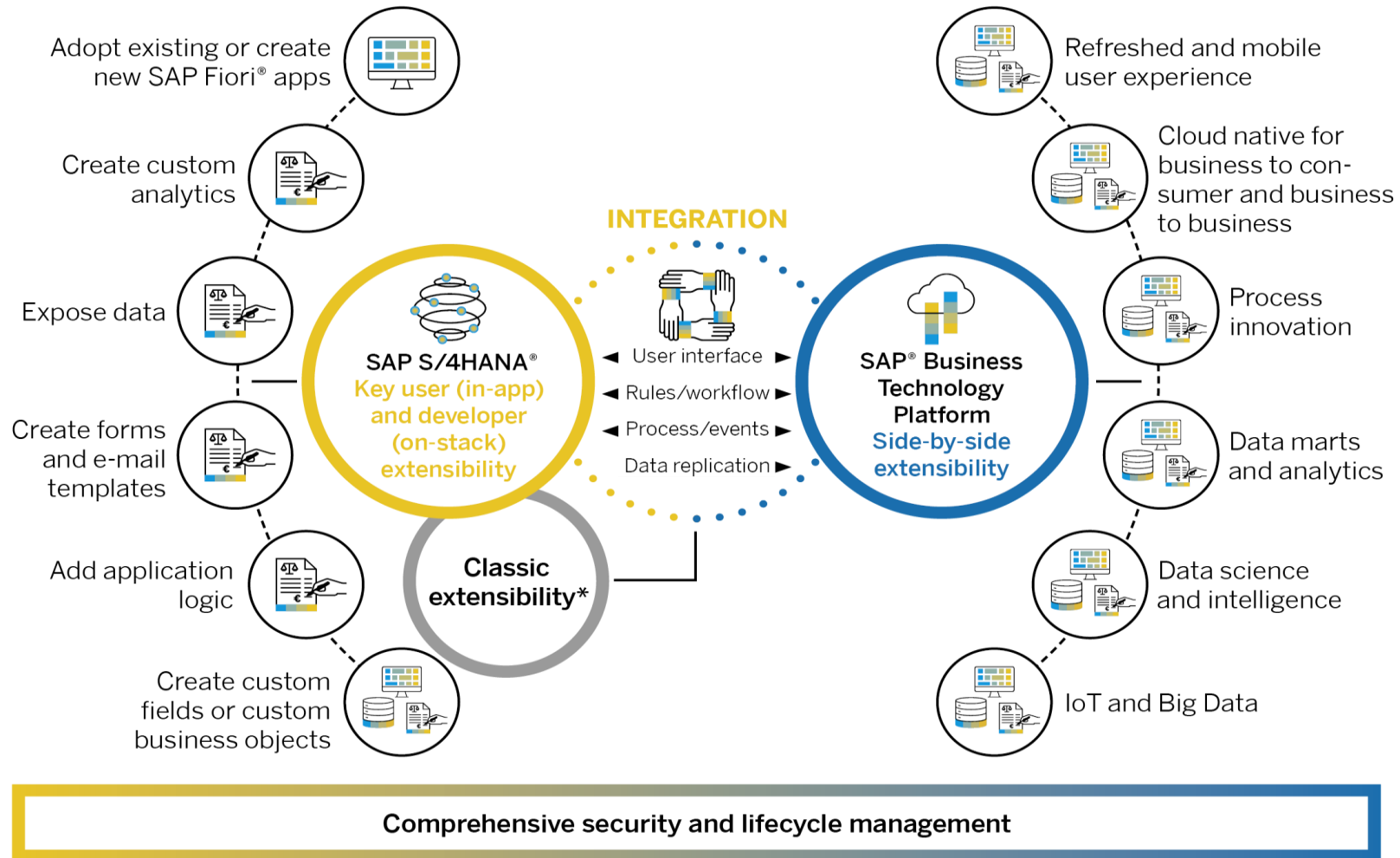
Clean Core vs. Customizations

What is the Decision Tree for Deciding Between the Two Approaches?



Strength of the project governance and discipline to avoid “scope creep” (How? See [subsequent pages](#))

Extensibility Framework in ECC to S/4 HANA



*Not available in SAP S/4HANA Cloud

THE BEST RUN 

Integration Suite

CONFIDENTIAL

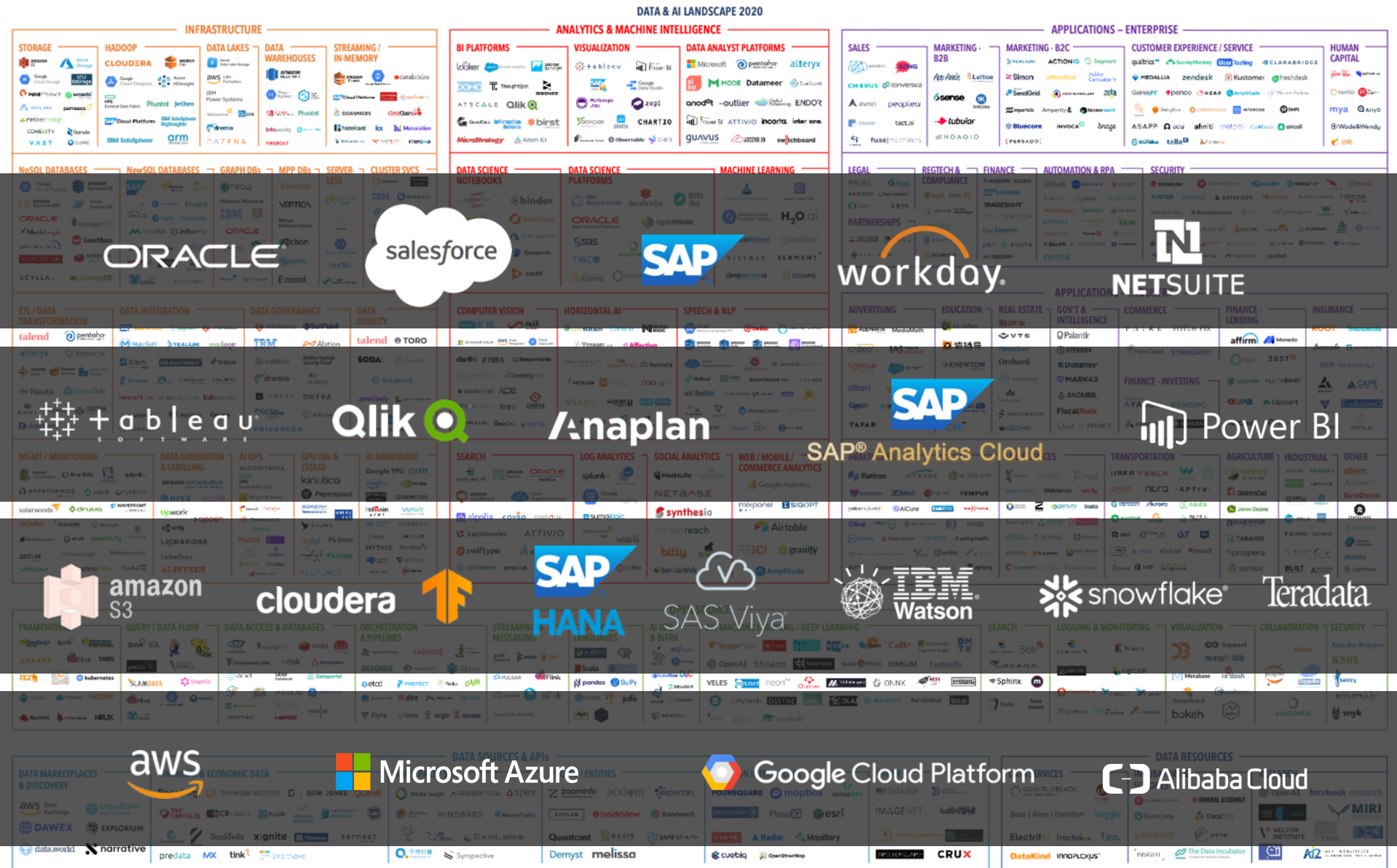
Exploding Complexity

Applications

Analytics

Data & Intelligent Technologies

Infrastructure



SAP's investment in integration

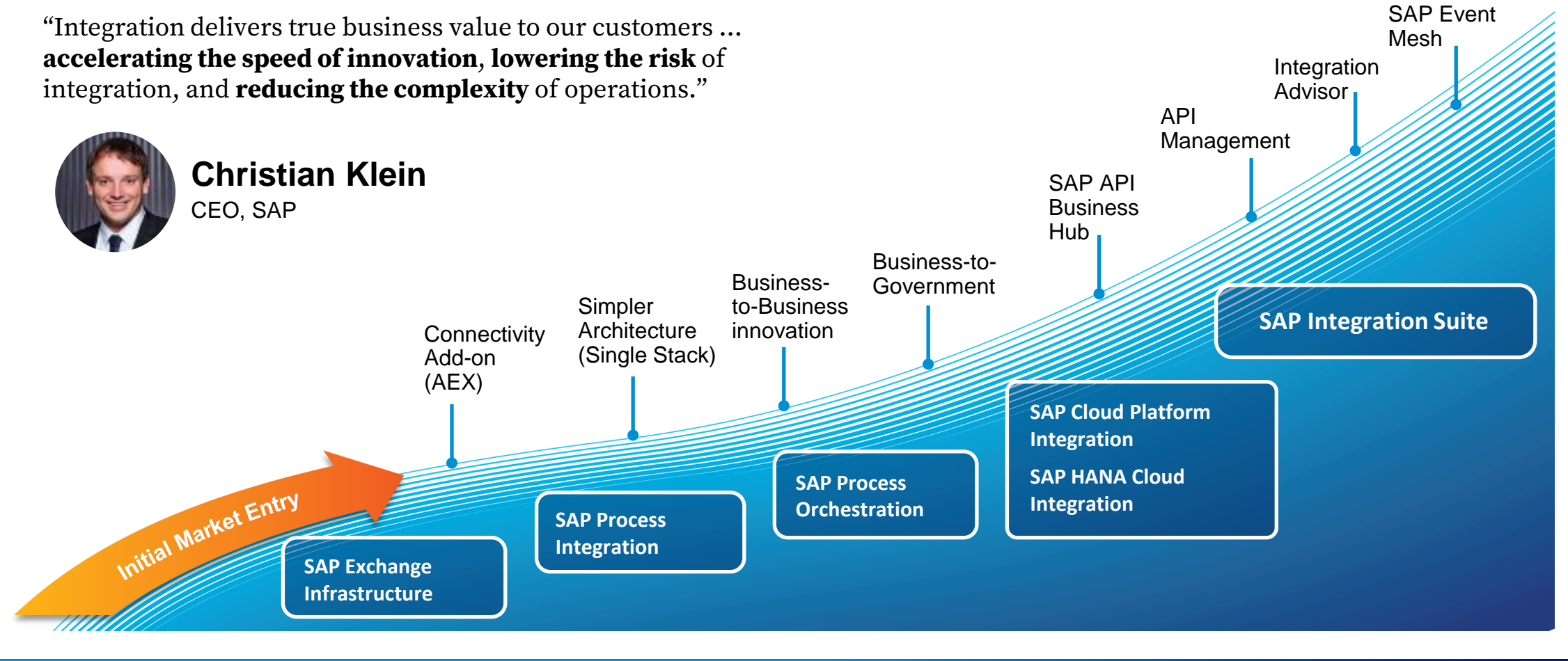
A history of continuous innovation

“Integration delivers true business value to our customers ... **accelerating the speed of innovation, lowering the risk** of integration, and **reducing the complexity** of operations.”



Christian Klein
CEO, SAP

CUSTOMER VALUE

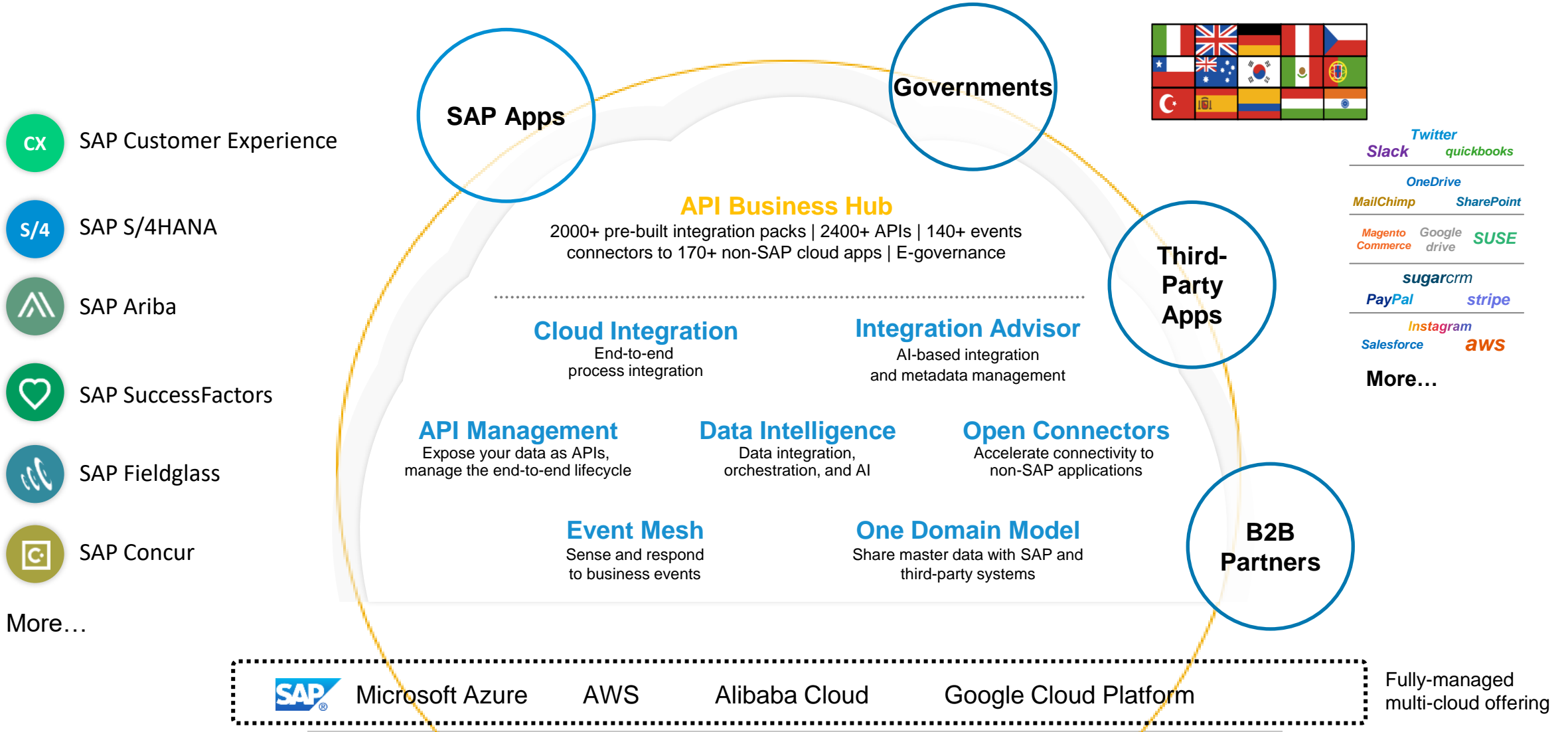


2003

TODAY

SAP Integration Suite

SAP's hybrid integration platform for the Intelligent Enterprise



RISE with SAP Integration Suite

Accelerate RISE with out-of-the-box integrations for SAP and non-SAP apps

Fully Maintained by SAP

2,400+

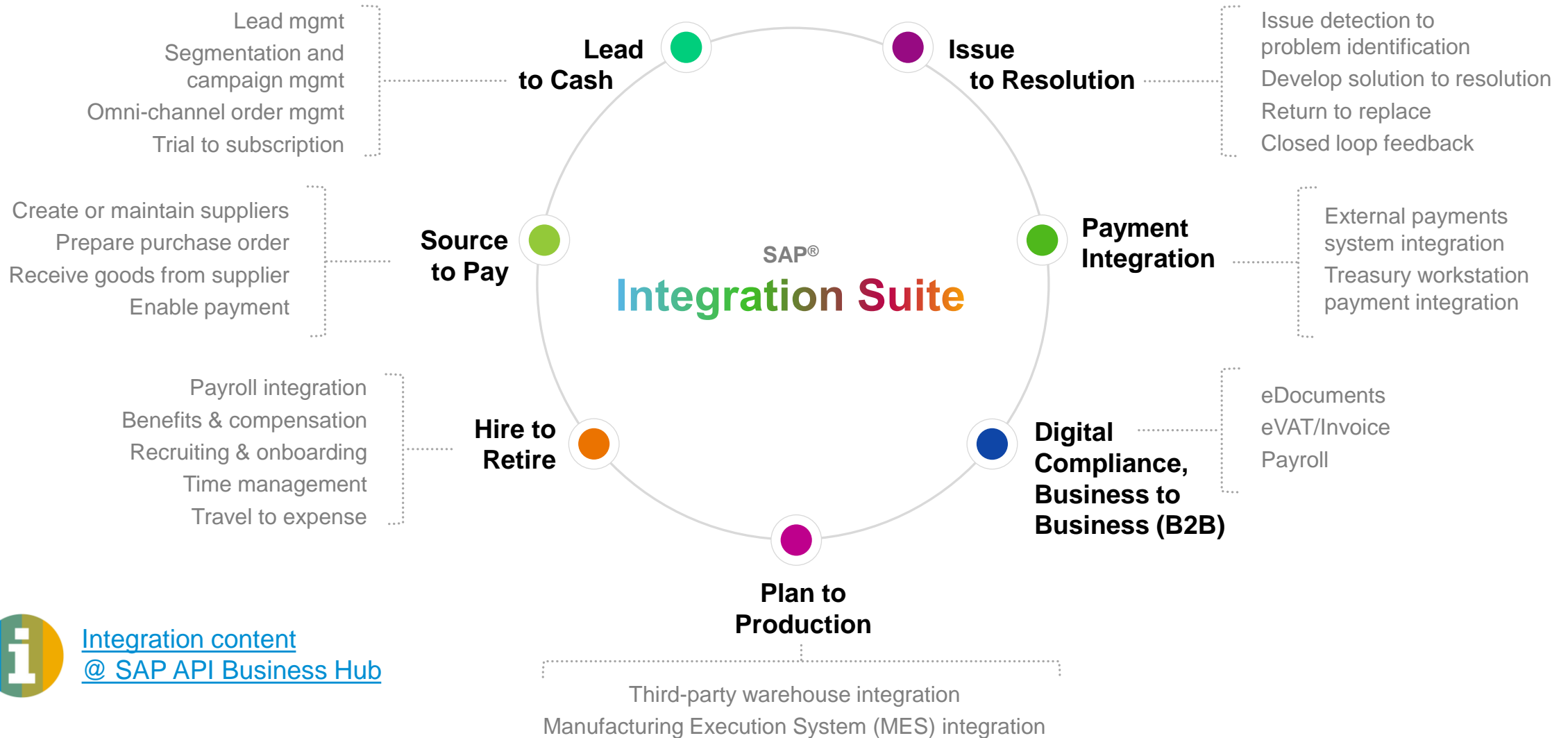
Out-of-the-box
Integrations

170+

Business Events

170+

Open Connectors



[Integration content](#)
[@ SAP API Business Hub](#)

THE BEST RUN 

Data Fabric

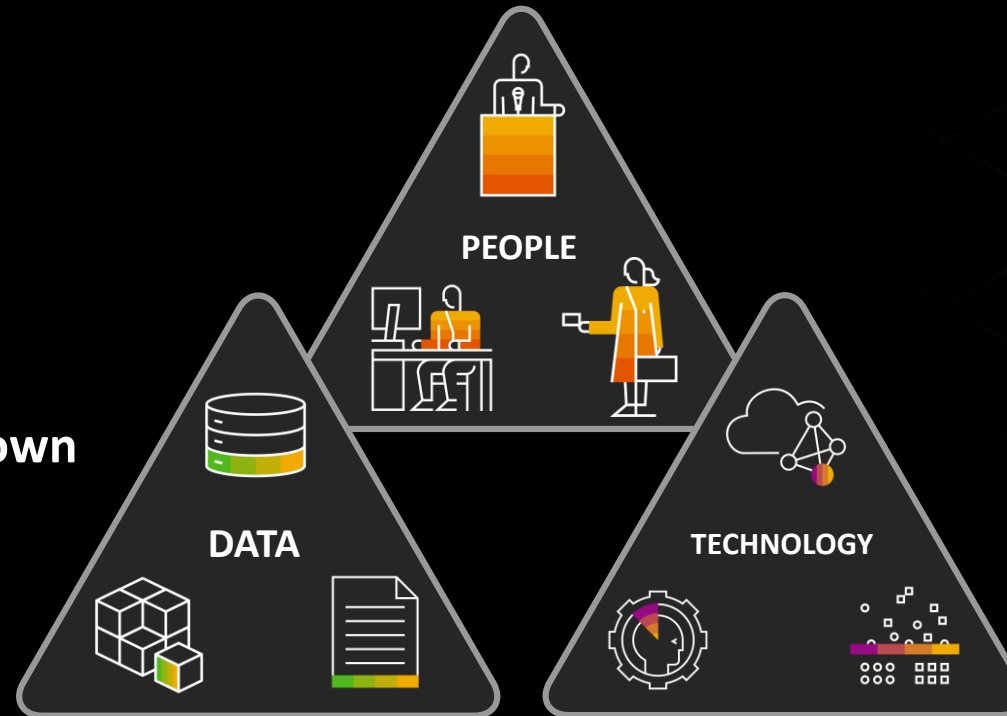
The Challenge: **Data and Analytics**

In case you're wondering why, click here..

[Summary](#)
[Fast Facts](#)

...How to empower **all stakeholders?**

...How to break down **data silos?**



... How to get **results faster?**

Data Fabric Delivers Integrated Data To All Data Consumers



GIVE DATA

PURPOSE

Modern Data and Analytics with SAP

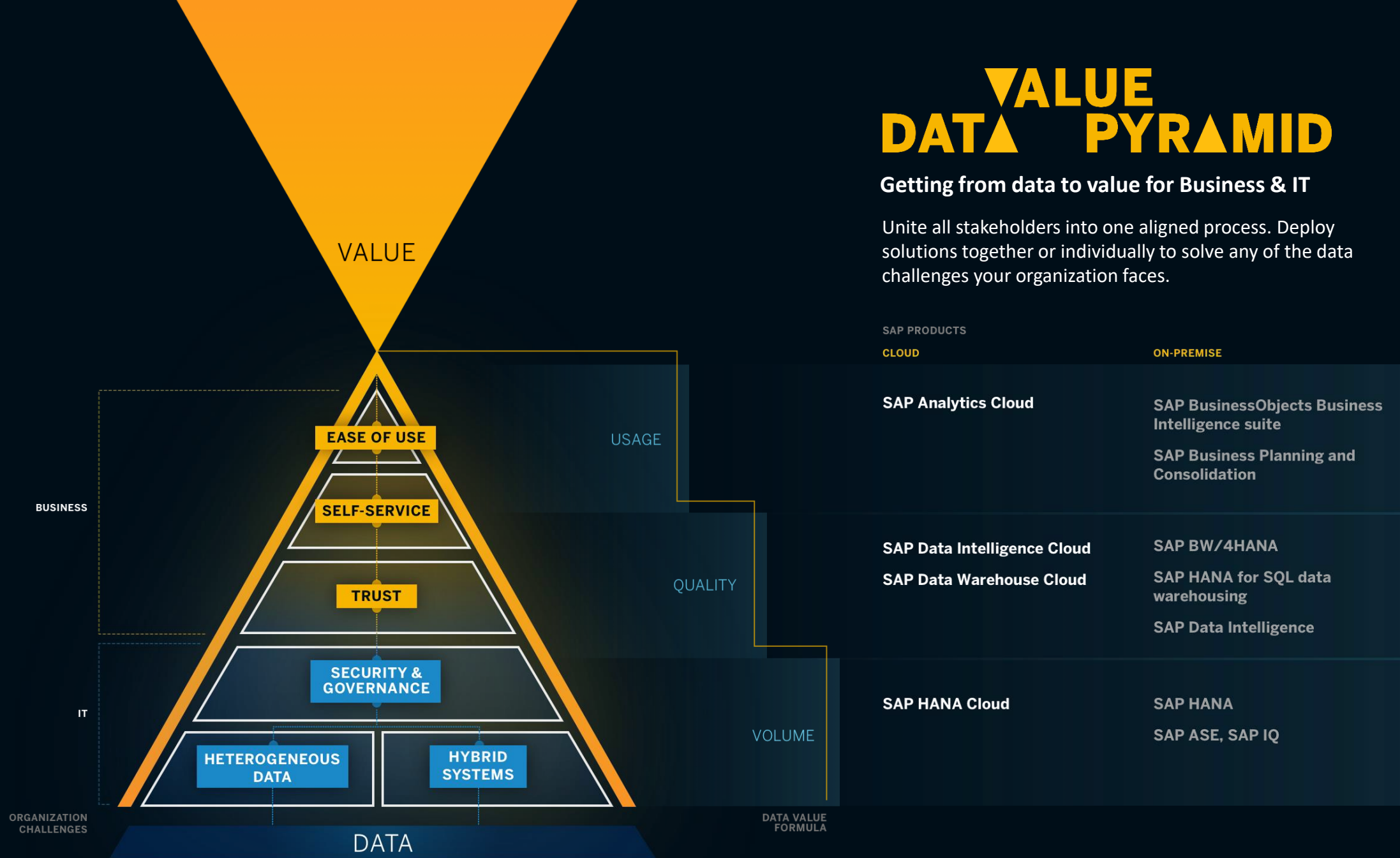


Chris Ritterhern, BTP COE SAP

VALUE DATA PYRAMID

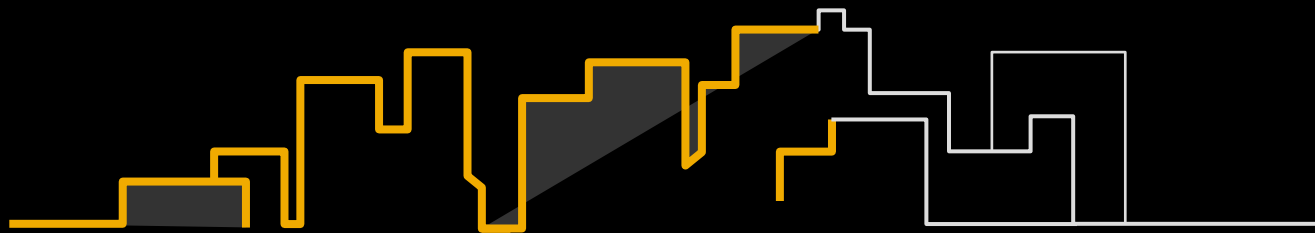
Getting from data to value for Business & IT

Unite all stakeholders into one aligned process. Deploy solutions together or individually to solve any of the data challenges your organization faces.



Hybrid Strategies benefit analytics and data

SAP BI Forrester Hybrid Research



Nearly two-thirds of companies anticipate that the future state of their analytics/BI solution will include a mix of on-premise and cloud (hybrid) resources.

Companies are achieving success by:

49% Increasing investment in analytics/BI technology and resources

46% Pursuing greater use of the cloud for data storage

45% Adopting more powerful analytics/BI tools

41% Implementing tighter security controls on data usage



60% of companies currently use a hybrid strategy for analytics and data



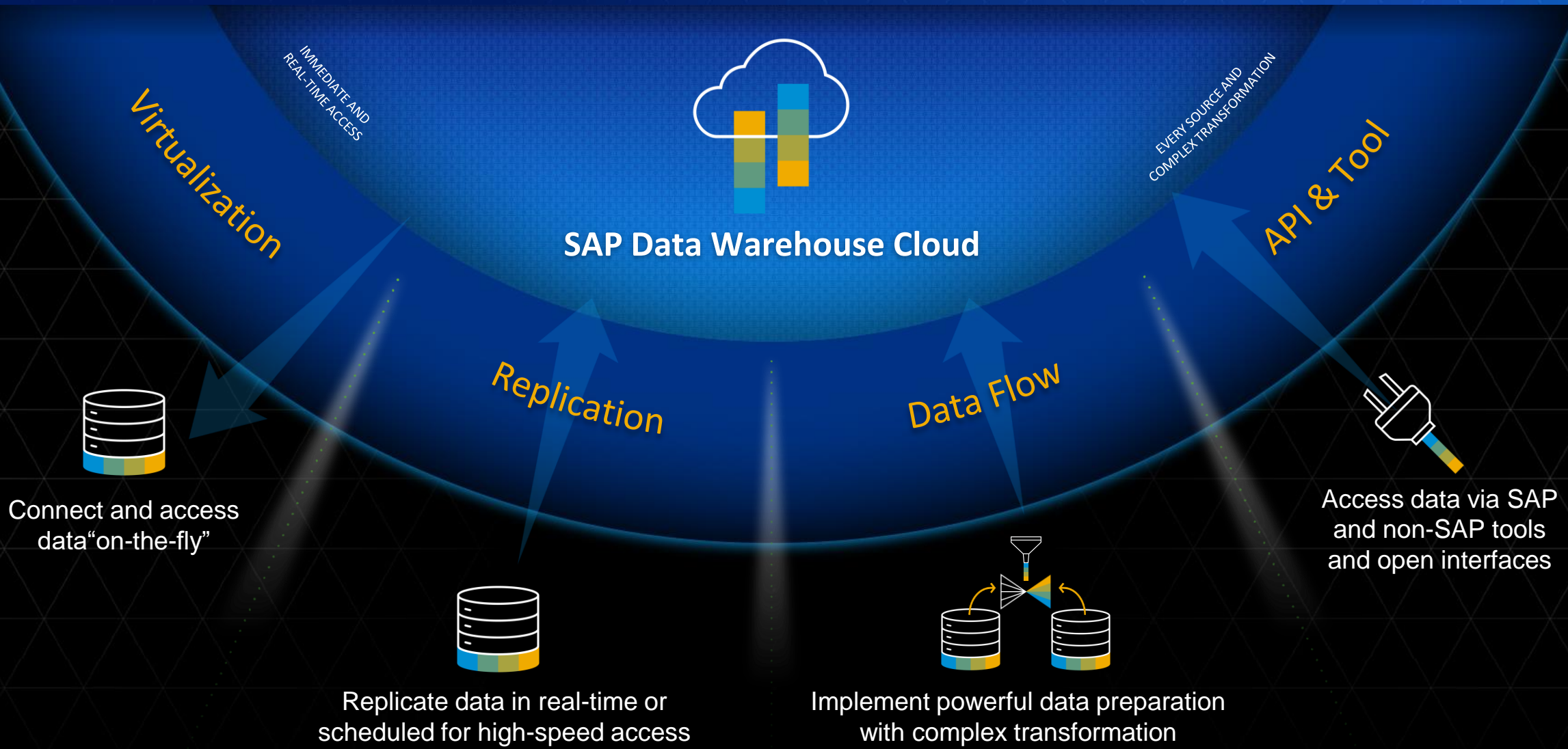
88% of companies regard hybrid analytics/BI platforms as important to their company



82% of companies agree that a hybrid approach is a critical next step in the evolution of their analytics/BI strategy

SAP Data Warehouse Cloud

Connect and collect data flexibly – catering to all styles of data integration



IT Challenge: Heterogeneous Data

OVERWHELMING AMOUNT OF DATA, SOURCES, AND SOLUTIONS

“ I’m struggling to deal with the ever-growing amount of data, data types, sources, and solutions that don’t connect.



Data Scientist



App Developer



Data Modeler



Data Steward



Admin



Data Engineer



Solution

Over 90% of Forbes Global 2000 companies use SAP solutions, positioning your organization for seamless data integration.

Connect your disparate data sources and types — both SAP and non-SAP — to gain a single gateway to all data. Connect new sources without additional complexity.

With the cloud capabilities, you’ll gain the flexibility to handle data of any size — whether structured or unstructured.

Key Capabilities:

- A single gateway to all data through virtualization.
- Flexible data tiering to find the right mix of performance and price.
- Openness to connect to SAP and non-SAP solutions.
- Load and combine structured and semi-structured data from a rich network of sources with the Data Flow Builder.
- Orchestrate data where it sits with scalable, repeatable machine learning pipelines.

Customer Stories: [Thélios](#), [NHL](#), [Vestas](#)



SAP HANA Cloud

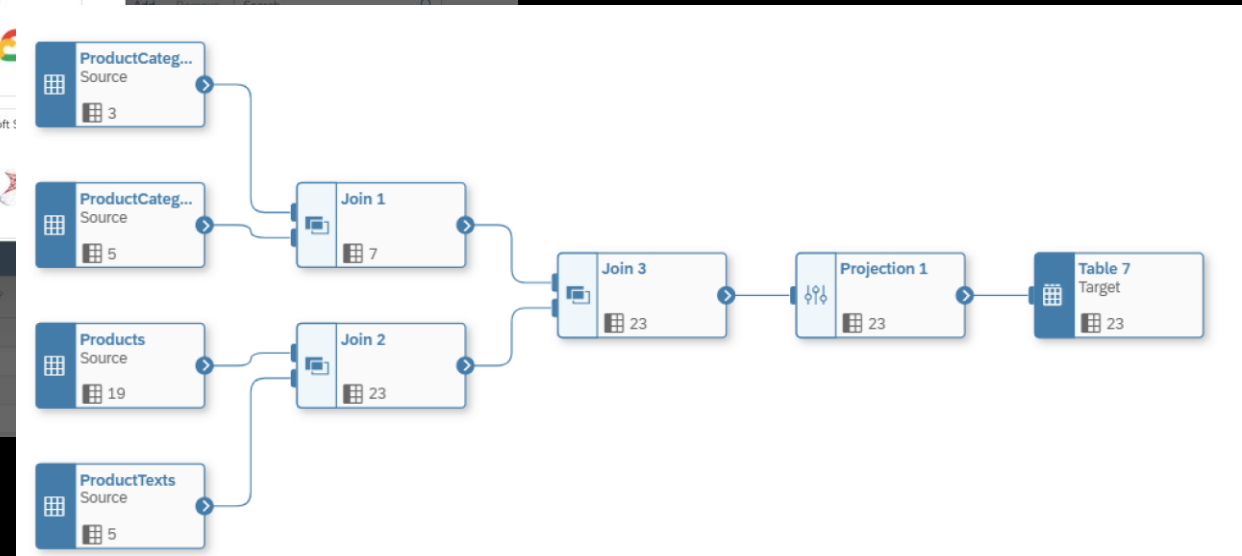
SAP Data Intelligence
SAP Data Warehouse Cloud

SAP Data Warehouse Cloud

Connect and collect data flexibly – catering to all styles of data integration

Name	Type	Owner
SAP Plan Data	SAP HANA	SAUERKL
S3	Amazon Simple Storage Service	SAUERKL
SAP HANA	SAP HANA	SAUERKL

SAP Data Warehouse Cloud Connections



Data Flow Graphical Interface

Accelerate Outcomes with Prebuilt Business Content – Latest Deliveries

Generator

Content Generation
SAP S/4HANA Cloud



SAP
New

SAP Business Content

Enterprise Analytics
for Procurement
SAP Ariba



Spend Analytics
SAP Ariba



Responsive Supply
Network, Sales and
Inventory
Automotive



Revenue Growth
Management
Consumer Products



Finance for
SAP S/4HANA Cloud



Financial Analytics
Dashboard for SAP
Analytics Cloud
SAP S/4HANA



POS Analytics
Retail



Life Science
Dashboard
SAP SCM



Statistical Process
Control
SPC



Meter to Cash
Utilities



Outcome-based
business Insights
OBBI



Sample Content
Finance, HR, Sales



Customer Value
Management
Telecommunication



Sustainability Control
Tower
Cross



New

Sales Analytics* for
SAP S/4HANA on-prem



New

Intelligent Real
Estate*
Real Estate



New

Partner Business Content

Marketing Analytics
Adverity



Customer Service
Insights
Bitech



E-Commerce –
Cross Marketplace
Insights
datazeit



Procurement Cockpit
CubeServ



Sales Dashboard
IBsolution



Optimizing Order
Fulfillment with ML
Inspired Intellect



Analytics for Effective
Inventory
Optimization
ISR



SuccessFactors /
Attendance Tracker
KPC



Product Cost
Simulation
mib:NDC



Sales Insights (SAP BW
& Salesforce)
PWC



MOSAIC – Margin-
Optimized Sales
Intelligence
Reply



OPERA –
Opportunity
Performance Analysis
Reply



New

Lyra Integrated
Capacity Planning
(EAM & HCM)
Rizing



Financial Reporting
for SAP Business One
s-peers



EWM Insights
Westernacher



RapidViews FI-CO*
Rapid Views



New

RapidViews SD*
Rapid Views



New

RapidViews MM*
Rapid Views



New

RapidViews PP*
Rapid Views



New

RapidViews QM*
Rapid Views



New

THE BEST RUN 

Process Automation aka Workflow, RPA

CONFIDENTIAL

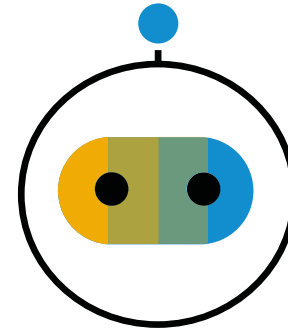
Boost process agility with low code/no code solutions

Combine SAP Workflow Management & SAP Intelligent RPA for end-to-end automation



SAP Workflow Management

Create fully automated workflows
for corporate processes



SAP Intelligent Robotic Process Automation

Automate tasks and replace
repetitive tasks with digital workers

SAP Intelligent Technologies work together for Hyperautomation

SAP BUSINESS PROCESS INTELLIGENCE

INTELLIGENT SUITE

INDUSTRY CLOUD

NON-SAP SYSTEM

SAP BUSINESS TECHNOLOGY PLATFORM

Interact

Conversational AI

Chatbots to interface and hand-over to execution bot



Interfacing

Events & Situation Handling

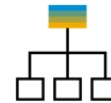
Communicate asynchronously through messages and events.



Reacting

Workflow Management

Digitize workflows, automate business processes, manage decision logic



Orchestrate Tasks

Intelligent RPA

Multiple bot workflows for execution (attended + unattended)



Performing Tasks

AI Factory Machine Learning

Self-learning bots with dynamic adaptability



Learn from experience

Process Automation

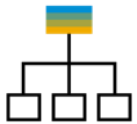


SAP Extension Suite – Digital Process Automation



A cloud service offering to digitize workflows, automate business processes, manage decision logic and gain end-to-end process visibility

SAP Workflow Management



Workflow

Workflow (Low/No-Code)
Manage Process Variants



Decisions

Business Rules
Manage Decisions



Process Visibility

Process Visibility
Live Process
Dashboards



Inbox

My Inbox



Tightly Integrated with:

SAP Intelligent RPA
SAP Conversational AI

Some selected use cases

Available as live process content packages on SAP API Business Hub



Capital Expenditure Approval Process

Managing investment decisions in a transparent way



Purchase Requisition Approval and Release

Automate approval and release of line items



Business Partner Payment Data Change Approval

Manage payment data changes and approvals



Purchase Requisition Header Approval and Release

Automate approval and release at header level by including all line items



Document Centric Approval

Automate document approvals.



Manage Invoices without Purchase Orders

Manage the posting of invoices without purchase orders



Visibility on Order to Cash

Improve time to delivery



Visibility on Accounts Payable

Establish accuracy in invoice processing



Visibility on Accounts Receivable

Gain visibility into debt management practices



Maintain Purchase Info Record

Avoid any rework towards the end of the purchasing process



Visibility on Procure to Pay

Avoid delays in receiving goods



Vendor Onboarding

Automate with approvals from the respective departments

THE BEST RUN 

The Foundation

CONFIDENTIAL

SAP BTP Cloud Services



Enterprise readiness with holistic lifecycle management

- Change and deployment management
- Technical ops automation
- Alerting
- Smooth integration option into existing ALM processes



Enterprise **security services** and hybrid identity & access management

- Cloud identity services
- Risk & compliance
- Secure development

The ASUG logo consists of the letters 'ASUG' in a bold, white, sans-serif font, centered within a solid orange rectangular background.

Chris Ritterhern

Business Technology Platform Center of Excellence Lead

c.ritterhern@sap.com / M: 949-742-2427 (txt'ing is fine)

L: PST Timezone



Divider

Follow us



www.sap.com/contactsap

© SAP SE or an SAP affiliate company. All rights reserved.

No part of this publication may be reproduced or transmitted in any form or for any purpose without the express permission of SAP SE or an SAP affiliate company.

The information contained herein may be changed without prior notice. Some software products marketed by SAP SE and its distributors contain proprietary software components of other software vendors. National product specifications may vary.

These materials are provided by SAP SE or an SAP affiliate company for informational purposes only, without representation or warranty of any kind, and SAP or its affiliated companies shall not be liable for errors or omissions with respect to the materials. The only warranties for SAP or SAP affiliate company products and services are those that are set forth in the express warranty statements accompanying such products and services, if any. Nothing herein should be construed as constituting an additional warranty.

In particular, SAP SE or its affiliated companies have no obligation to pursue any course of business outlined in this document or any related presentation, or to develop or release any functionality mentioned therein. This document, or any related presentation, and SAP SE's or its affiliated companies' strategy and possible future developments, products, and/or platforms, directions, and functionality are all subject to change and may be changed by SAP SE or its affiliated companies at any time for any reason without notice. The information in this document is not a commitment, promise, or legal obligation to deliver any material, code, or functionality. All forward-looking statements are subject to various risks and uncertainties that could cause actual results to differ materially from expectations. Readers are cautioned not to place undue reliance on these forward-looking statements, and they should not be relied upon in making purchasing decisions.

SAP and other SAP products and services mentioned herein as well as their respective logos are trademarks or registered trademarks of SAP SE (or an SAP affiliate company) in Germany and other countries. All other product and service names mentioned are the trademarks of their respective companies.

See www.sap.com/trademark for additional trademark information and notices.