

# S/4HANA Update & 2022 Release Preview

**Zach Vernon**

S/4HANA Cloud Solution Advisor & Evangelist  
North America S/4HANA Center of Excellence

Public

# Disclaimer

The information in this presentation is confidential and proprietary to SAP and may not be disclosed without the permission of SAP. Except for your obligation to protect confidential information, this presentation is not subject to your license agreement or any other service or subscription agreement with SAP. SAP has no obligation to pursue any course of business outlined in this presentation or any related document, or to develop or release any functionality mentioned therein.

This presentation, or any related document and SAP's strategy and possible future developments, products and or platforms directions and functionality are all subject to change and may be changed by SAP at any time for any reason without notice. The information in this presentation is not a commitment, promise or legal obligation to deliver any material, code or functionality. This presentation is provided without a warranty of any kind, either express or implied, including but not limited to, the implied warranties of merchantability, fitness for a particular purpose, or non-infringement. This presentation is for informational purposes and may not be incorporated into a contract. SAP assumes no responsibility for errors or omissions in this presentation, except if such damages were caused by SAP's intentional or gross negligence.

All forward-looking statements are subject to various risks and uncertainties that could cause actual results to differ materially from expectations. Readers are cautioned not to place undue reliance on these forward-looking statements, which speak only as of their dates, and they should not be relied upon in making purchasing decisions.

# Agenda

1

## **S/4HANA**

Where we are now

---

2

## **S/4HANA Maintenance & Release Strategy**

Extended maintenance offering & change in release strategy

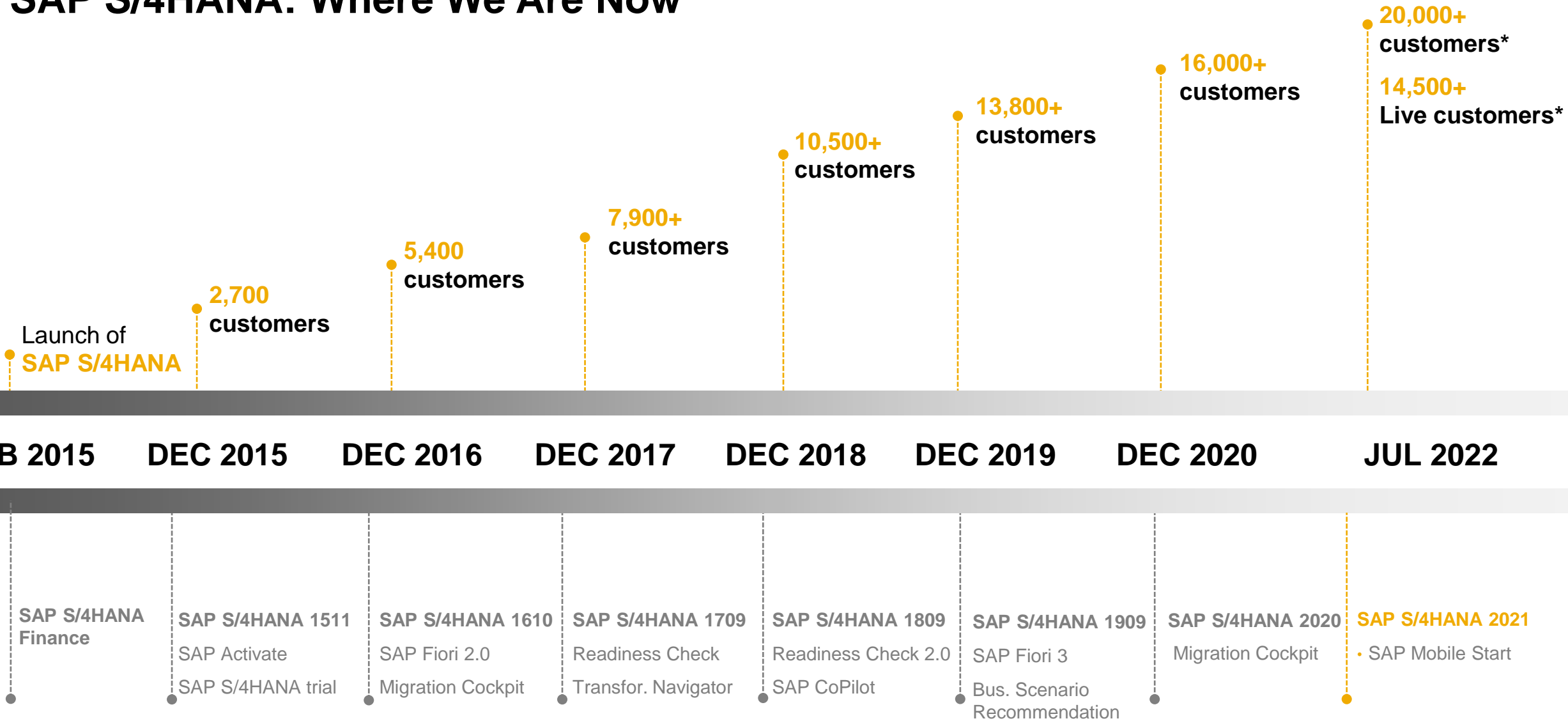
---

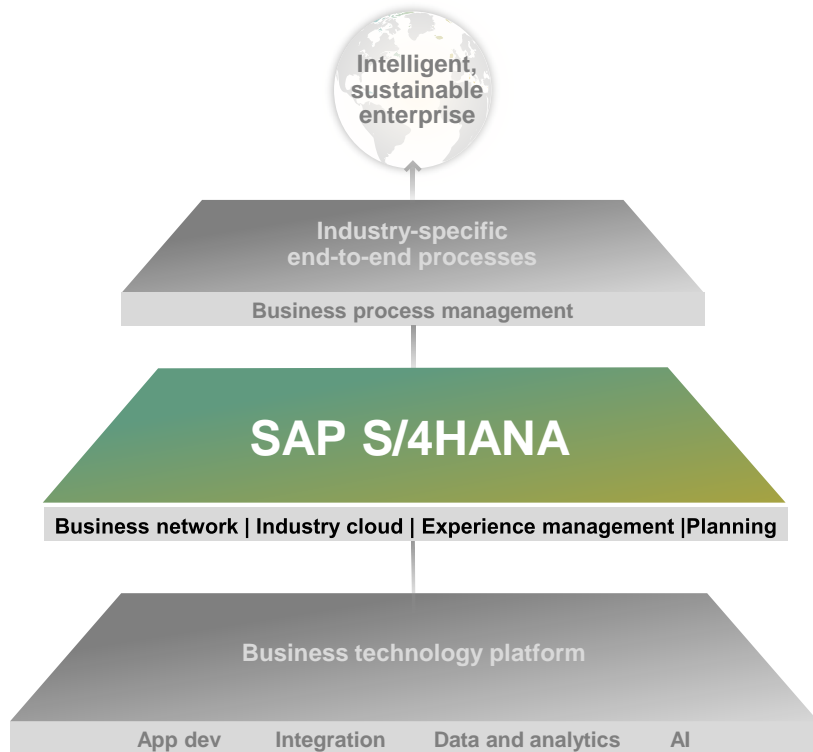
3

## **S/4HANA 2022 Innovations**

Innovation summary and highlights planned for the 2022 release

# SAP S/4HANA: Where We Are Now





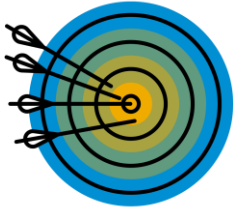
SAP S/4HANA is the **product family** of SAP's modern ERP Offerings, which are at the core of the intelligent, sustainable enterprise.

SAP S/4HANA is delivered in three distinct product flavors:

- SAP S/4HANA Cloud, public edition
- SAP S/4HANA Cloud, private edition
- SAP S/4HANA

**The change in strategy described in the following slides only effects solutions in the SAP S/4HANA Cloud, private edition family and SAP S/4HANA (on-premise).**

# SAP S/4HANA Has Reached Its **Next Stage**



Since 2015 **eight SAP S/4HANA** releases have been delivered

**Next level of product maturity: SAP S/4HANA 2023**

*Delivering completeness on Compatibility Scope alternatives and concluding major overhauls.*

Taking the **next evolutionary step** towards a release strategy, which **better supports our customer base.**



# New Extended Maintenance Option for **SAP S/4HANA 1709, 1809, 1909** customers

- **SAP S/4HANA 2023 release marks an important milestone for our customers with SAP S/4HANA Cloud, private edition, or on-premise:**



*Completeness on compatibility scope*

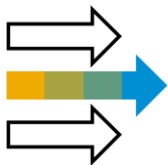


*Less disruptive feature delivery*



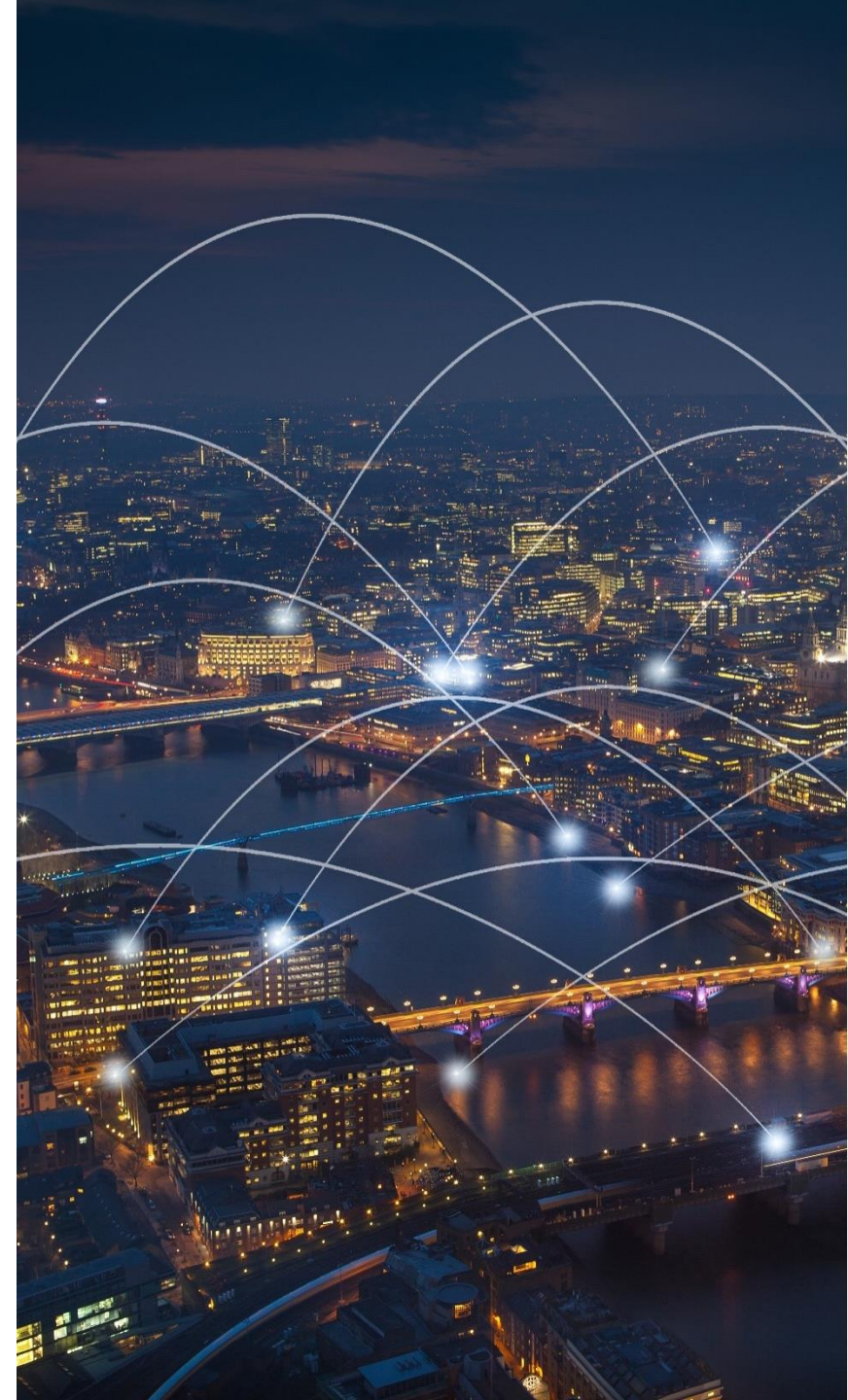
*Extended mainstream maintenance timeframe*

- To migrate to the upcoming SAP S/4HANA 2023 release, RISE with SAP is the perfect solution.
- To make it more effective for customers to upgrade to the 2023 release, SAP offers:

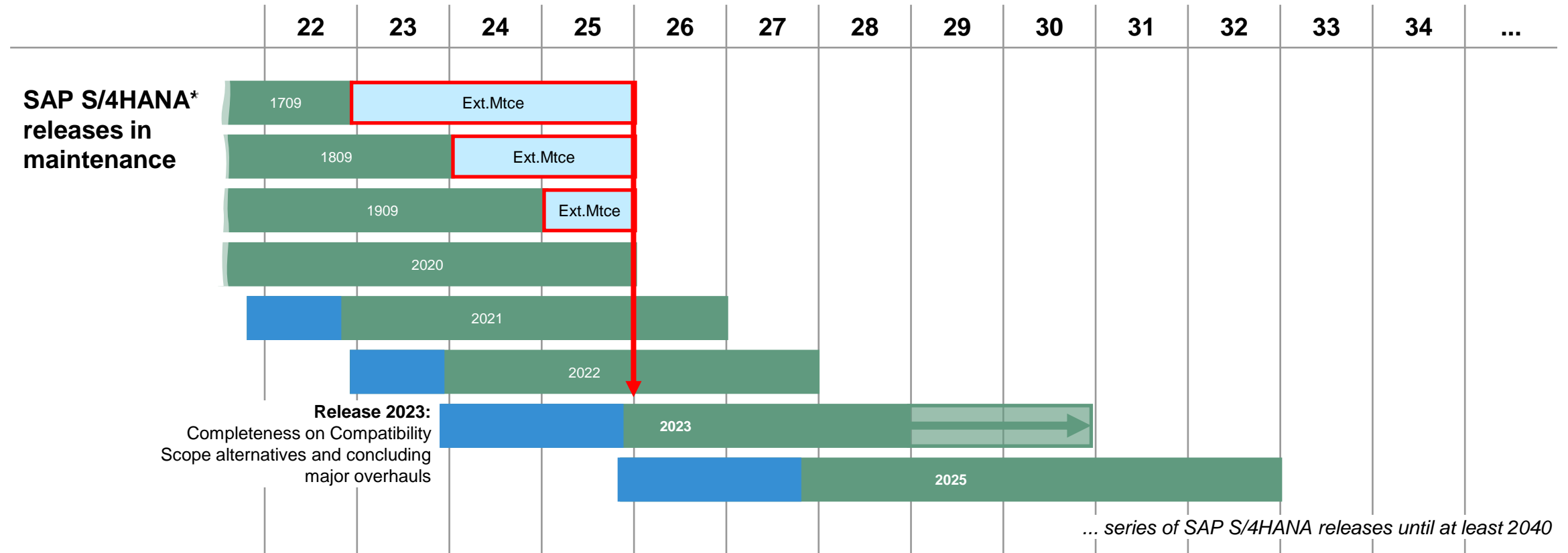


## **Extended maintenance option for customers on SAP S/4HANA 1709, 1809, or 1909**

- *Included in RISE and other SAP S/4HANA subscriptions*
- *4% fee on core SAP S/4HANA for on-premise customers*



# Extended Maintenance for SAP S/4HANA 1709, 1809, and 1909 Releases



Mainstream Maintenance has two phases:

■ "Innovation" Line  
Delivery of new features via FPS

■ "Maintenance" Line  
Delivery of changes via SPS

After the general availability of SAP S/4HANA 2022, Feature Package Stacks (FPS) and Support Package Stacks (SPS) contain stabilizations bundled with corrections and legal changes. Customers benefit from this functionality as part of their maintenance fee. The first SPS of a new release can contain selected features and is labeled Feature Package Stack (FPS) accordingly. Support Package Stacks are compiled periodically and made available in the [SAP Service Marketplace](#)

\* valid for on-premise edition and Cloud, private edition

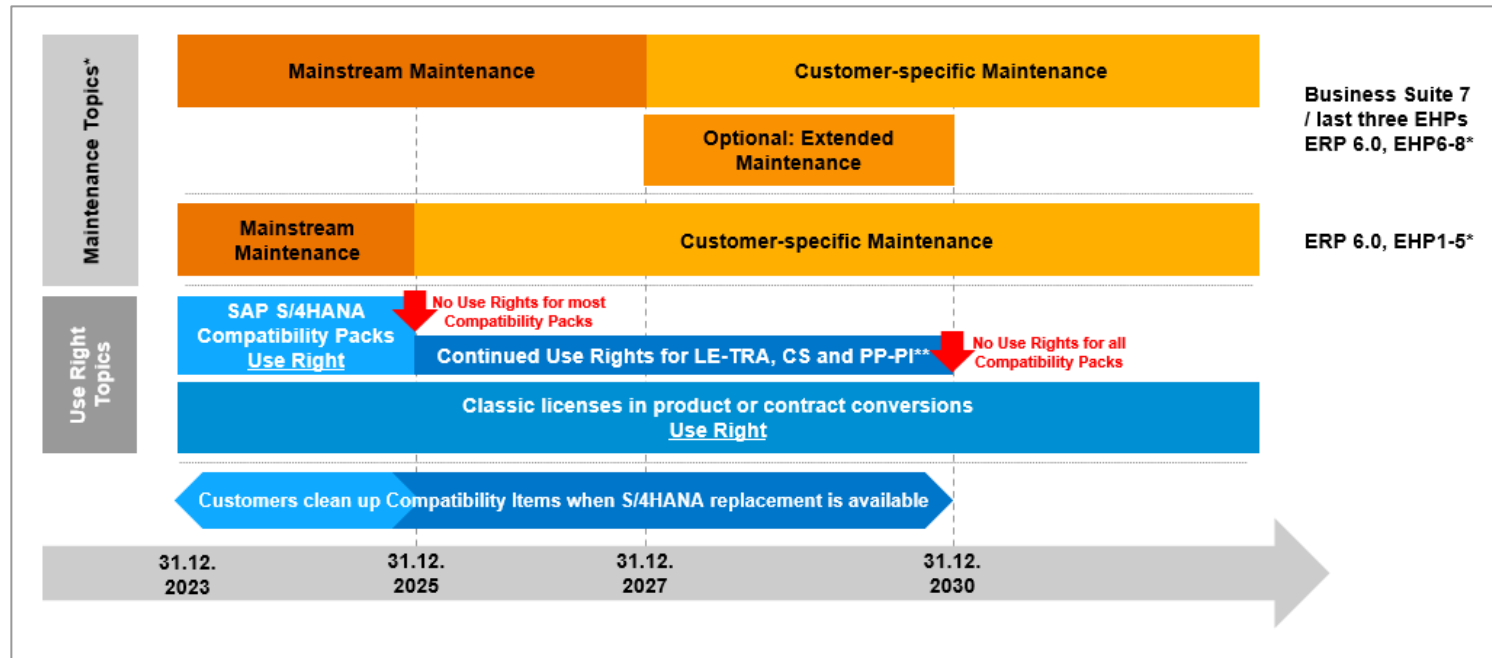


# SAP S/4HANA

## Compatibility Scope: What happens after 2025/2030

SAP LABS PREVIEW

SAP customers were informed that the usage rights for Compatibility Scope will expire on December 31, 2025. SAP will provide a selective and specific extension of Compatibility Scope usage rights to December 31, 2030 for Transportation (LE-TRA), Customer Service (CS), and selected Production Planning in Process Industry (PP-PI) items on an exceptional basis.



Detailed information about available alternative functionality can be found in SAP Note #[2269324](#)  
Detailed information about insights on the next steps can be found in this blog post [here](#)

\* This is the current state of planning and may be changed by SAP at any time without notice.

# **SAP S/4HANA 2022 and SAP S/4HANA Cloud, private edition**



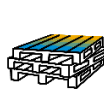












## **Preliminary Delivery Scope**



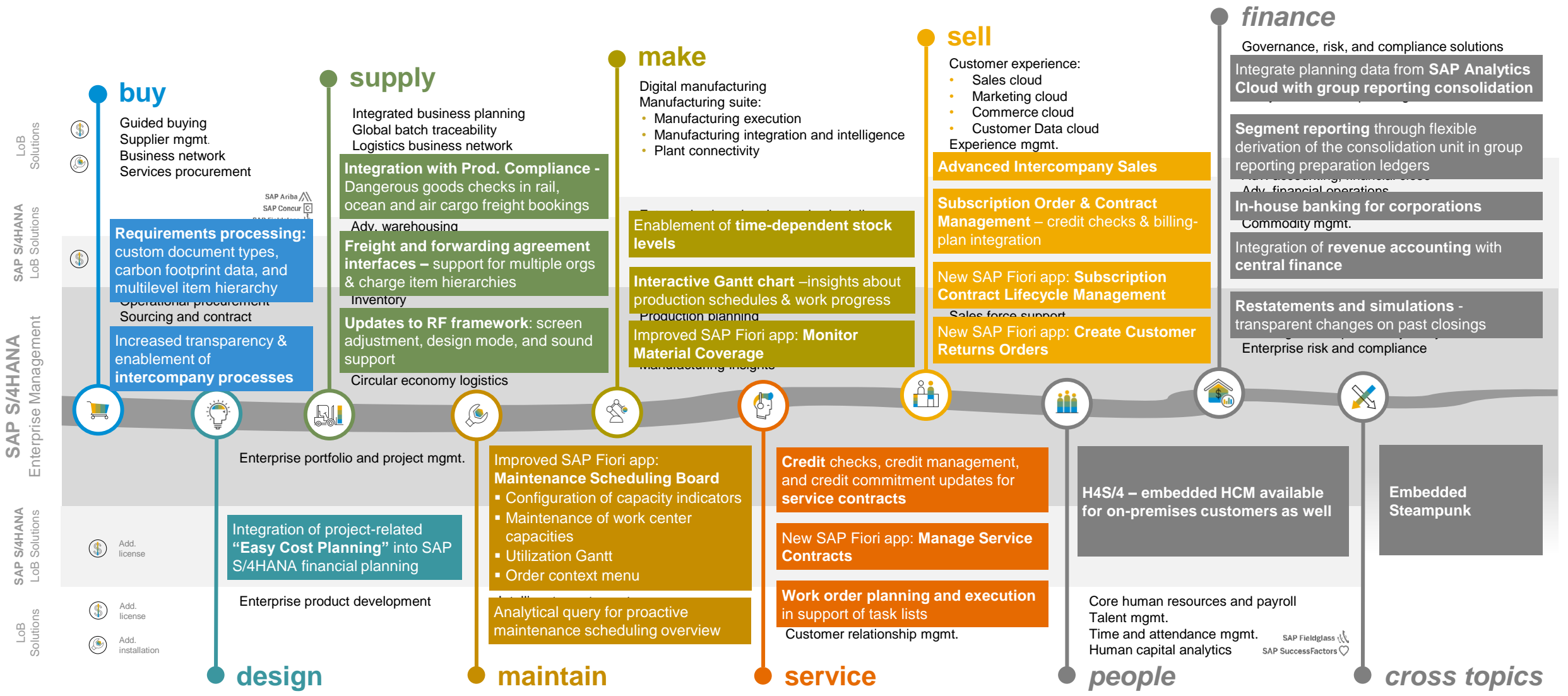
# SAP S/4HANA 2022 – Innovations in the 8<sup>th</sup> wave

SAP LABS PREVIEW

## Planned Key Innovations – Overview

 <h3>Finance</h3> <ul style="list-style-type: none"> <li>Ability to integrate planning data from SAP Analytics Cloud with group reporting consolidation / Data warehouse extraction for group reporting</li> <li>Segment reporting through flexible derivation of the consolidation unit in group reporting preparation ledgers</li> <li>Restatements and simulations - transparent changes on past closings</li> <li>In-house banking for corporations</li> <li>Integration of revenue accounting with central finance</li> </ul>	 <h3>R&amp;D / Engineering</h3> <ul style="list-style-type: none"> <li>Graphical comparison of redlines in the change record</li> <li>Updated handling of the change record: paste from Microsoft Excel, labels, and default class assignments</li> <li>Change-record support for bill-of-material (BOM) types</li> <li>Impact analysis updates in change records</li> <li>EPPM - Integration of project-related Easy Cost Planning into S/4HANA financial planning</li> </ul>	 <h3>Inventory Management</h3> <ul style="list-style-type: none"> <li>Enablement of barcode scanning in various SAP Fiori apps</li> <li>New SAP Fiori app for analyzing stock in a date range</li> <li>Additional features for the Manage Physical Inventory Documents app</li> <li>Additional features for managing physical-inventory count results</li> <li>New SAP Fiori app for posting a goods receipt for a process order</li> </ul>
 <h3>Human Resources</h3> <ul style="list-style-type: none"> <li>Parallel running of a Pre-DME (Preliminary Data Medium Exchange) program</li> <li>Analytics for Time Sheet activity split</li> <li>Analytics for Processes &amp; Forms</li> <li>SAP HCM for SAP S/4HANA as data provider</li> <li>Automated clearing process for bank transfer after payment replacement</li> </ul>	 <h3>Manufacturing</h3> <ul style="list-style-type: none"> <li>Assignment of components to operation activities as reference only</li> <li>Sizing of Kanban control cycles based on simulative forecast data</li> <li>Replacement of Internet Explorer dependencies for browser-based process management applications</li> <li>Interactive planning in Gantt – comprehensive insights about production schedules and work progress</li> </ul>	 <h3>Extended Warehouse Management</h3> <ul style="list-style-type: none"> <li>Machine learning for slotting</li> <li>Ability to integrate with SAP Warehouse Robotics</li> <li>Manufacturing execution and digital manufacturing cloud: WIP handling</li> <li>Production supply area change in the MES-driven staging scenario</li> <li>Updates to RF framework: screen adjustment, design mode, and sound support</li> </ul>
 <h3>Sourcing and Procurement</h3> <ul style="list-style-type: none"> <li>Collect and manage cost breakdown information from suppliers during sourcing of direct materials</li> <li>Requirements processing: custom document types, carbon footprint data, and multilevel item hierarchy</li> <li>Increased transparency and enablement of intercompany processes for sales and procurement</li> <li>Blockchain for improved process transparency</li> </ul>	 <h3>Asset Management</h3> <ul style="list-style-type: none"> <li>Adjustments to the assignment of order operations</li> <li>Maintenance Scheduling Board app – utilization Gantt, ability to make multiple selections, order-context menu</li> <li>Adjustments to the maintenance schedule for assets – planning, scheduling, and other in-app features</li> <li>Leverage machine-learning (ML) algorithms to provide system support in maintenance notifications</li> </ul>	 <h3>Production Planning</h3> <ul style="list-style-type: none"> <li>App extensions for external buffer positioning and sizing</li> <li>Monitor Material Coverage SAP Fiori apps: extensions and usability improvements</li> <li>Material shortage profile – enablement of a reorder point</li> <li>Enablement of time-dependent stock levels</li> <li>Extended analysis of PIR accuracy</li> </ul>
 <h3>Sales / Subscription Billing</h3> <ul style="list-style-type: none"> <li>Advanced Intercompany Sales</li> <li>New SAP Fiori app to create customer returns orders</li> <li>Mass changes to sales documents across document categories</li> <li>Pricing procedure configuration to handle international sales transactions and tax requirements</li> <li>Enhanced capabilities in subscription order and contract management</li> <li>SAP Fiori apps for subscription contract lifecycle management</li> </ul>	 <h3>Service</h3> <ul style="list-style-type: none"> <li>Service contract management – credit checks, credit management, and credit commitment updates for service contracts</li> <li>Service with work order planning and execution, in support of task lists</li> <li>Perform credit checks in service orders</li> <li>Comprehensive billing capability for the maintenance service process</li> <li>Corrective maintenance for the maintenance service process</li> </ul>	 <h3>Transportation Management</h3> <ul style="list-style-type: none"> <li>Logistics Integration with Product Compliance - Dangerous goods checks in rail, ocean and air cargo freight bookings</li> <li>Enable Incoterms in the integration of SD, MM, and LE with transportation management, and in TM itself</li> <li>Freight and forwarding agreement interfaces – support for multiple organizations and charge item hierarchies</li> <li>Charge calculation and settlement for consignment orders</li> </ul>
 <h3>Product Compliance</h3> <ul style="list-style-type: none"> <li>Product compliance integration for advanced intercompany sales process</li> <li>Product compliance integration – supplier check for purchase contracts</li> <li>Provision of dangerous goods data with SOAP service for road, rail, ocean, and air-cargo freight bookings to carriers</li> <li>Transport permission determined based on enclosure-specific dangerous goods list data</li> </ul>	 <h3>Industry to Core</h3> <ul style="list-style-type: none"> <li><b>Consumer Industries:</b> Efficient management of stock left on truck: check-in recording and automatic reassignment</li> <li><b>Fashion:</b> Demand and supply segmentation in embedded production planning and detailed scheduling (ePP/DS)</li> <li><b>Public Sector:</b> Automated ML clustering of customers by risk reasons for intelligent collections</li> <li><b>Automotive:</b> Integration of repetitive manufacturing planned orders with iPPE factory layout</li> </ul>	 <h3>Cross-Topics</h3> <ul style="list-style-type: none"> <li>Adaptations and extensions in data quality management</li> <li>Cross-domain and framework adaptations in central governance</li> <li>Table export to Google Workspace</li> <li>SAP Fiori UX monitor – Mass change</li> <li>Customized deletion of runtime artifacts in SAP Application Interface Framework</li> <li>Monitoring of events consumed from SAP Event Mesh</li> </ul>

# SAP S/4HANA 2022 Innovations



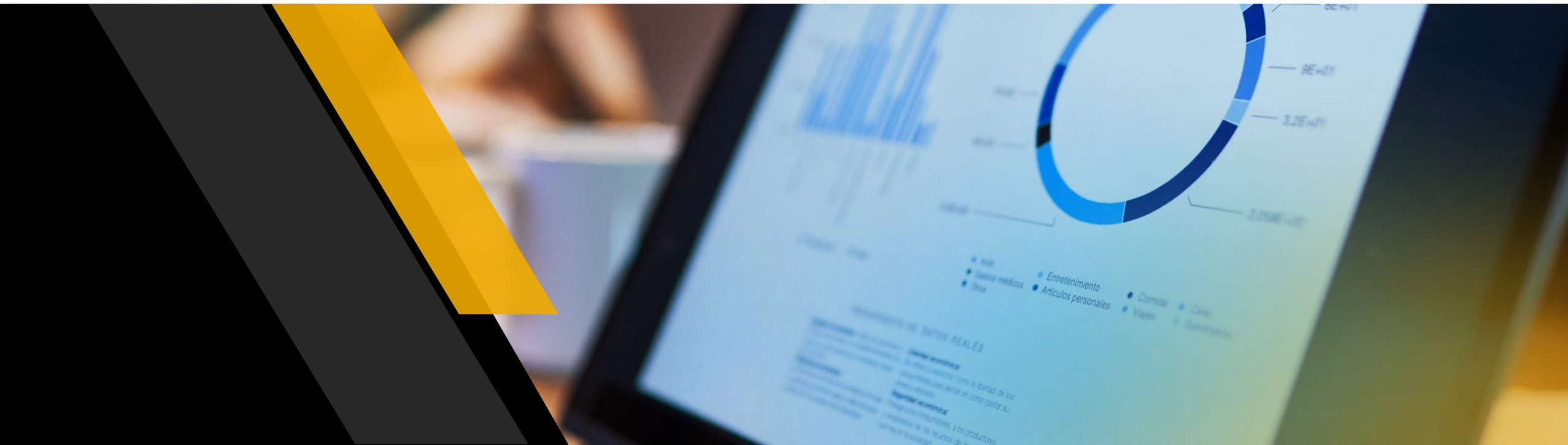
# What's coming for SAP S/4HANA 2022

## Line of Business Highlights from Sales, Finance & Asset Management



# What's coming for SAP S/4HANA 2022

## Finance



# SAP S/4HANA 2022 for Finance

## Planned Innovation

SAP LABS PREVIEW

### Contract Accounting



#### SAP Fiori app for incoming payments – success rate

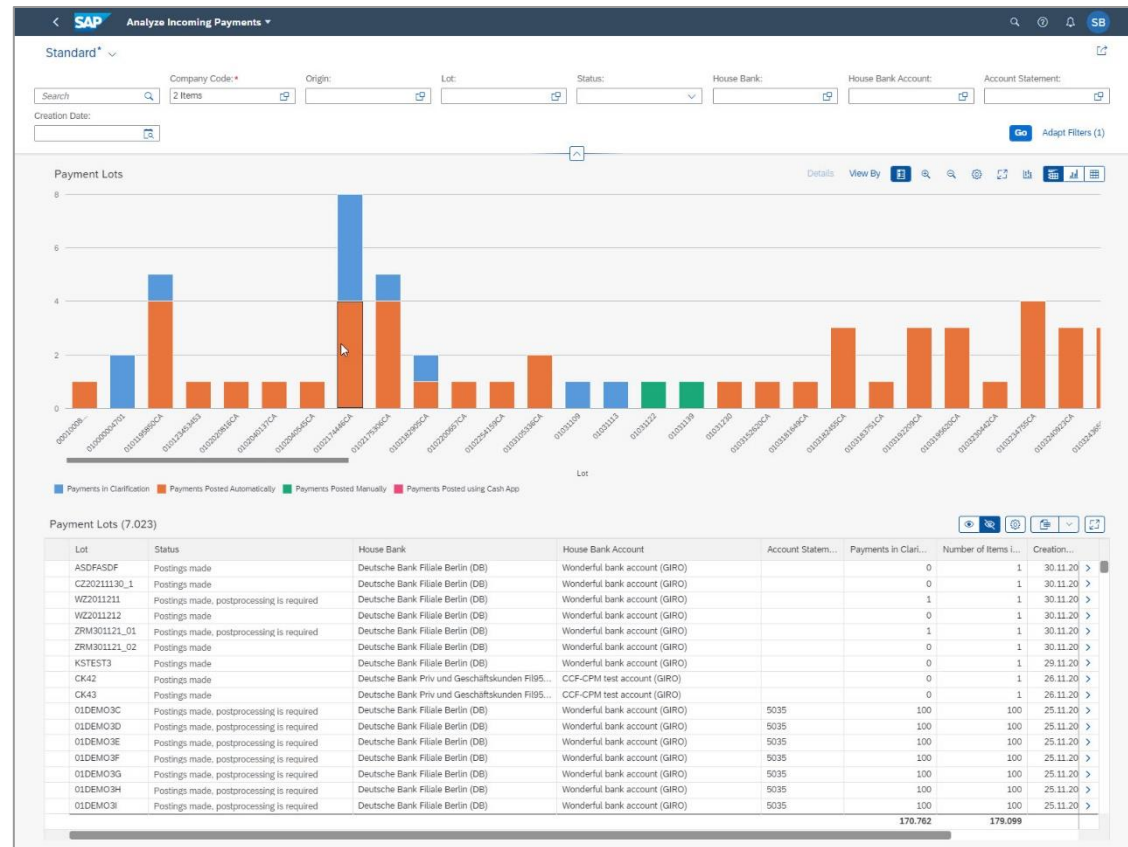
New SAP Fiori app to analyze incoming payments and provide an overview of the automatic process for payment matching:

- Know what happened with payments
- Identify what helped during the payment-clarification process
- See how well machine learning supported the automatic process for matching incoming payments

#### Benefit

- Make better decisions with key details and feedback on the automatic matching of payments through machine learning

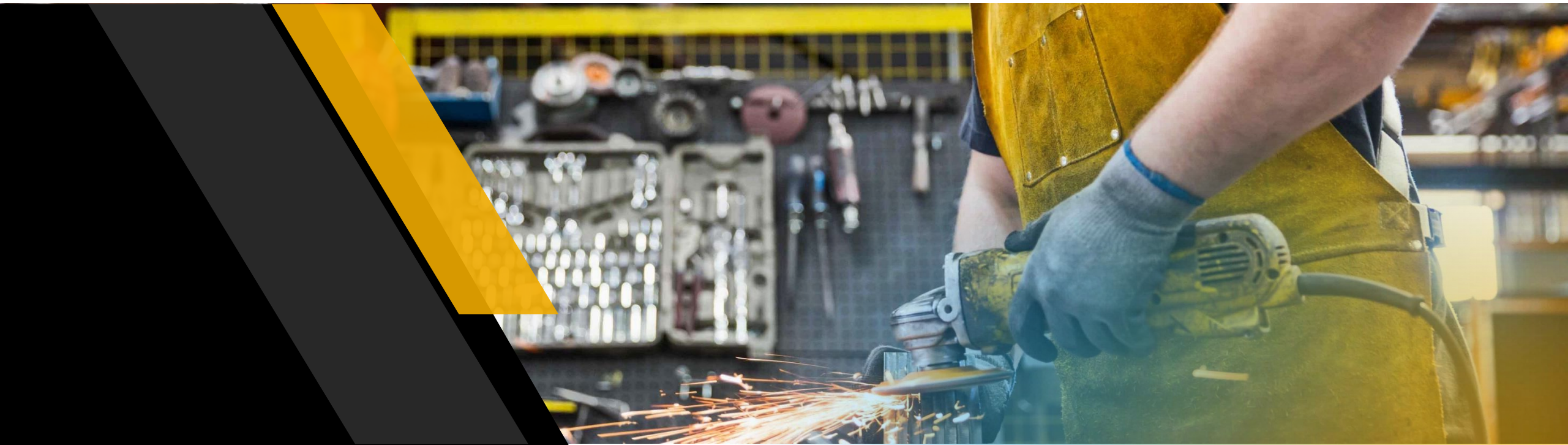
USER EXPERIENCE



Key innovations do not reflect licensing

# What's coming for SAP S/4HANA 2022

## Asset Management





# SAP S/4HANA 2022 for Asset Management

## Planned Innovation

SAP LABS PREVIEW

## Maintenance Demand Processing



### SAP Fiori app for maintenance plans and items (2/2)

**Manage Maintenance Items**

STANDARD\_V1

Editing Status: All | Maintenance Plan: | Maintenance Item: | Plan Category: 2 Items | ABC Indicator: | Priority: | Task List: |

Assembly: | Equipment: 36 Items | Functional Location: | Created By: \*1337006\*

Assigned To Plan (22) | Unassigned Items (8) | All Items (30)

Item	Plan	Reference Object	Reference Object Type	Plan Category	Priority
<input type="checkbox"/> Gear Box M475 500H Maintenance 2317 Call Object Type: Maintenance or service order Task List: Z500 Worm Reduction Gear Box Maintenance (A/459/1)	Gear Box M475 500H Maintenance (1430)	Gear Box (210100003)	Equipment	PM (Maintenance Order)	Very High (1)
<input type="checkbox"/> Gear Box M475 2318 Call Object Type: Maintenance or service order Task List: Z800 Worm Reduction Gear Box Maintenance (A/463/1)	Gear Box M475 (1441)	Gear Box (210100023) Object Deactivated	Equipment	PM (Maintenance Order)	Very High (1)
<input type="checkbox"/> Gear Box M475 600H6M 2319 Call Object Type: Maintenance or service order Task List: Z800 Worm Reduction Gear Box Maintenance (A/463/1)	Gear Box M475 600H6M (1442)	Gear Box (210100043)	Equipment	PM (Maintenance Order)	



Click [here](#) to watch the video and see how you manage Maintenance Items in SAP S/4HANA 2022.

Key innovations do not reflect licensing

# SAP S/4HANA 2022 for Asset Management

## Planned Innovation

SAP LABS PREVIEW

## Maintenance Planning



### Analytical query for proactive maintenance scheduling overview

- Analytical query that allows users to analyze and derive insights about the proactive maintenance programs that are set up for the periodic maintenance of the assets
- Drag-and-drop dimensions and measures to generate a report based on multiple dimensions
- Ability to filter on dimensions and measure values
- Predefined global filter that allows the user to save values as variants and also export as a tile to the launchpad
- Chart view that allows users to see measures against a single dimension's values

### Benefit

- Enable maintenance planners or supervisors to identify metrics such as how many maintenance orders of type "YA02" were created for an item of equipment from a given maintenance plan or how many maintenance calls are open compared with completed for a given category or type of maintenance plans
- Derive insights into the overall backlog of preventive or proactive maintenance orders and notifications that are present, or that might come up in the future
- Provide a pictorial representation of the result of the analysis with a graphical representation of a dimension such as maintenance plan category against measures such as open compared with completed calls
- Access reports with preset filters through a single click instead of applying the filters and the dimensions and measures from the start, saving a significant amount of time for users and helping them take decisions quickly instead of spending time setting up the application

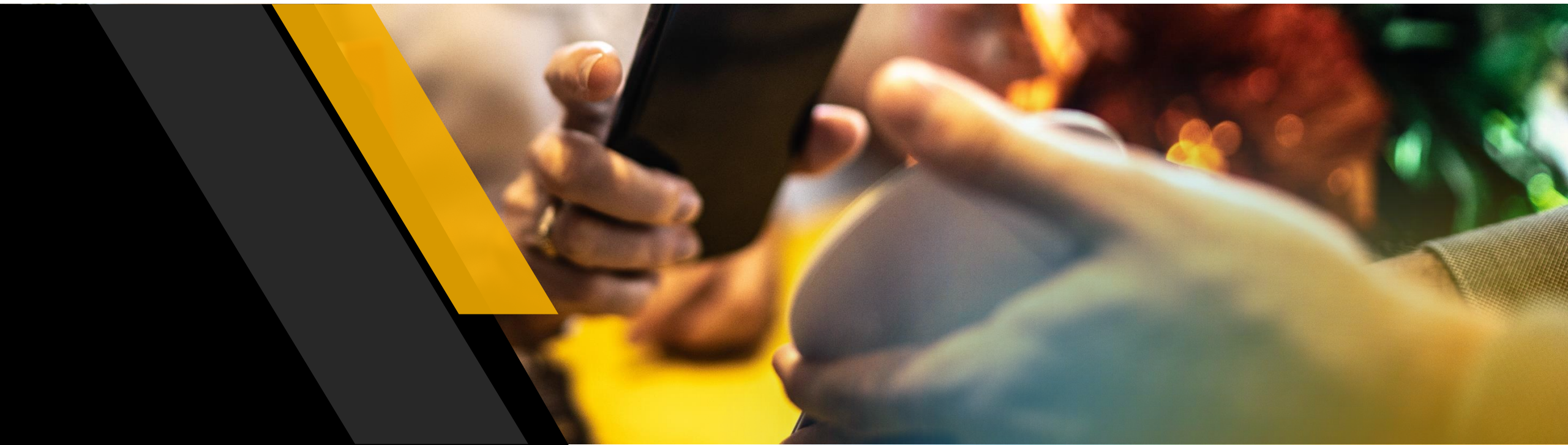
Item	Plan	Reference Object	Reference Object Type	Plan Category	Priority
<input type="checkbox"/> Gear Box M475 500H Maintenance 2317	Gear Box M475 500H Maintenance (1430)	Gear Box (210100003)	Equipment	PM (Maintenance Order)	Very High (1)
Call Object Type: Maintenance or service order Task List: Z500 Worm Reduction Gear Box Maintenance (A/459/1)					
<input type="checkbox"/> Gear Box M475 2318	Gear Box M475 (1441)	Gear Box (210100023) Object Deactivated	Equipment	PM (Maintenance Order)	Very High (1)
Call Object Type: Maintenance or service order Task List: Z600 Worm Reduction Gear Box Maintenance (A/463/1)					
<input type="checkbox"/> Gear Box M475 600H6M 2319	Gear Box M475 600H6M (1442)	Gear Box (210100043)	Equipment	PM (Maintenance Order)	
Call Object Type: Maintenance or service order Task List: Z600 Worm Reduction Gear Box Maintenance (A/463/1)					
<input type="checkbox"/> 7.5 HP Screw Compressor Maintenance 2320	7.5 HP Screw Compressor Maintenance (1443)	Compressor Stage 1 (210100007)	Equipment	PM (Maintenance Order)	Very High (1)
Call Object Type: Maintenance or service order Task List: 7.5 HP Screw Compressor Maintenance (A/474/1)					

DATA  
INSIGHTS

Key innovations do not reflect licensing

# What's coming for SAP S/4HANA 2022

## Sales



# SAP S/4HANA 2022 for Sales

## Planned Innovation

SAP LABS PREVIEW

### Price Management



#### Saving costs by tracking price changes in sales efficiently in workflows

Configure workflows according to a company's internal guidelines on how to control and approve price changes in sales by different stakeholders:

- Configure the process to trigger approval of sales-price changes
- Configure the workflow of approvals
- Define and assign responsible teams to the different approval workflows

#### Benefit

- Win more deals and increase revenue through timely approval of customer-specific prices
- Reduce administration costs through efficient workflow for price-change approvals

The screenshot shows the SAP S/4HANA Team configuration interface. The title is 'THE 1ST APPROVER TEAM FOR 1710'. The interface includes several sections:

- General Information:** Global ID: THE 1ST APPROVER TEAM FOR 1710, Type: Sales Price Management (SLSPRCMGM1), Category: Sales Price Management (SLSPRCMGM).
- Responsibility Definitions:** A table with columns 'Name' and 'Value'. One entry is 'ConditionType' with value '=>Gross price for appr(ZPRD) || =>Material(DM01)'. Below this is a 'Condition Type' field.
- Team Owners:** A table with columns 'Business Partner', 'Full Name', and 'User ID'. One entry is '9980005383'.
- Team Members:** A table with columns 'Business Partner', 'Full Name', 'User ID', and 'Functions'. One entry is '998000433' with 'Example PricingSpecialist' as the full name, 'CB998000433' as the user ID, and 'Sales Price Approver - Level 1' as the function.
- Direct Sub Teams:** A section for sub-teams.
- Sub Teams:** A section for sub-teams.

Key innovations do not reflect licensing

This presentation and SAP's strategy and possible future developments are subject to change and may be changed by SAP at any time for any reason without notice. This document is provided without a warranty of any kind, either express or implied, including but not limited to the implied warranties of merchantability, fitness for a particular purpose, or noninfringement.

# SAP S/4HANA 2022 for Sales

## Planned Innovation

SAP LABS PREVIEW

### Sales Contract Management



#### Creation and editing of sales contracts with the SAP Fiori app “Manage Sales Contracts”

Create and edit sales contracts quickly and intuitively with the new SAP Fiori app, which delivers:

- Efficient creation of sales contracts, with immediate determination of pricing
- Ability to adopt the UI to company best practices using key-user adaptation; for instance, show, hide, or rearrange standard and extension fields
- Embedded analytics with context-based navigation
- Quick actions accelerating users' work
- Mass data entry through XLS cut and paste capabilities

#### Benefit

- Increase sales force speed and efficiency with the new app



Item	Product	Target Quantity	Target Value	Item Category	Overall Status	Rejection Status	Net Value
10	Trad.Good 12.Reorder Point,Reg.Trad. (TG12)	15	0.00 EUR	Qty Contract Item (KMN)	Completed	Nothing Rejected	263.25 EUR

Key innovations do not reflect licensing

# **SAP S/4HANA and SAP S/4HANA Cloud, private edition**

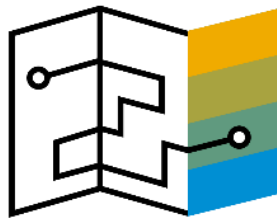
## **Where to go for more information**



# Official SAP Road Maps webpage: [sap.com/roadmaps](https://sap.com/roadmaps)

To view all SAP Road Map documents, visit [www.sap.com/products/roadmaps/finder-all.html](https://www.sap.com/products/roadmaps/finder-all.html)

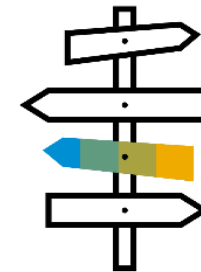
**SAP ROAD MAPS** describe recent and upcoming highlights in SAP's portfolio to help you plan and implement your IT landscape.



## INTERACTIVE ROAD MAPS PLATFORM

**SAP INTERACTIVE ROAD MAPS** connect thought leadership with solution capabilities, business value, and innovations. This digital platform is the future of Road Maps, with more content being added regularly.

<https://roadmaps.sap.com>



## CUSTOM ROADMAPPING TOOL

**SAP TRANSFORMATION NAVIGATOR** brings together industry trends with the customer's business and IT priorities to create a custom road map to SAP S/4HANA.

<https://support.sap.com/stn>

# SAP Roadmap Explorer

## VIEW CURRENT INFORMATION IN ROAD MAP EXPLORER

SAP Road Map Explorer

Products Processes Industries

# SAP Road Maps

SAP Road Maps support the journey to SAP's future product portfolio and the Intelligent Enterprise. Explore our road maps, webinars, and transformation guides to learn more.

Search SAP Road Maps by keywords, topics, processes or products.

The screenshot displays the SAP Road Map Explorer interface. At the top, there is a navigation bar with the SAP logo, the title 'Road Map Explorer', and tabs for 'Products', 'Processes', and 'Industries'. Below this, a search bar shows 'SAP S/4HANA' and indicates '728 Road Map Items'. A secondary navigation bar includes filters for 'Products', 'Processes', 'Industries', 'Focus Topics', and 'Suite Qualities', along with a 'Current - Latest' view selector and a 'Save' button.

The main content area is a grid of road map items, organized by quarter and category. The visible items include:

- Q4 2022 (457 Road Map Items):** Categories include 'Absence Management' (e.g., 'CATS: improved analytics'), 'Accounts Payable' (e.g., 'SAP Fiori app "Manage Payment Blocks"'), 'Accounts Receivable' (e.g., 'Payment advice engine'), and 'Advanced Available-to-Promise' (e.g., 'Ability to consider response planning-based confirmations').
- Q1 2023 (52 Road Map Items):** Categories include 'Absence Management' (e.g., 'Analytics for time sheet compliance'), 'Advanced Available-to-Promise' (e.g., 'Set confirmations to zero'), 'Supply Creation-Based Confirmation: Support...', 'Agricultural Contract Management' (e.g., 'SAP Fiori app for agricultural origination application manage...'), and 'Benefits Management' (e.g., 'Additional employee processes for benefits').
- Q2 2023 (3 Road Map Items):** Categories include 'Bill to Cash for Energy Prosumers' (e.g., 'Enable custom fields and logic for installation master data'), 'Billing of DSO and Meter Operators' (e.g., 'Enable custom fields and logic for installation master data'), 'Billing of Energy and Services for Regulated Markets' (e.g., 'Enable custom fields and logic for installation master data'), 'Commodity Risk Management' (e.g., 'Time-dependent scheduling agreements in commodity risk...'), 'Employee Self-Service' (e.g., 'My Documents app'), and 'HR Administration' (e.g., 'My Documents app').
- Q3 2023 (17 Road Map Items):** Categories include 'Asset Spatial Enablement' (e.g., 'Geographical enablement framework'), 'Contract Accounting' (e.g., 'Machine learning (ML) in the collections process'), 'Entity Close' (e.g., 'Automated supervision of closing tasks'), 'Financial Accounting' (e.g., 'Multiple valuations for activity confirmations'), 'Interface Monitoring and Error Handling' (e.g., 'Customer-specific configuration of delivered interfaces'), and 'Just-In-Time Manufacturing' (e.g., 'Forward customer JIT calls to suppliers').
- 2023 (135 Road Map Items):** Categories include 'Advanced Available-to-Promise' (e.g., 'Ability to consider product allocations during an availability...'), 'Business add-in for product allocation', 'Dynamic time zone handling in product allocation', 'New SAP Fiori apps to display change documents of product...', 'OData API for a full blown simulative advanced ATP check', 'Supply Creation-Based Confirmation enhancements of Product...', and 'Supply Creation-Based Confirmation enhancements of Production...'. There is also an 'Analytics Tool for Business and Key Users' category with a 'Review booklet designer: custom configuration of review booklets' item.
- 2024 (39 Road Map Items):** Categories include 'Advanced Available-to-Promise' (e.g., 'Determining a common delivery location for a group of requirements'), 'Extended upload for product allocation', 'Fine-granular control of the business documents that are part of the AT...', 'Increased confirmation precision through consideration of subdaily...', 'Multilevel Supply Creation-Based Confirmation (MSBC) - Product...', 'OData API for a comprehensive advanced ATP check', and 'Agricultural Contract Management' (e.g., 'Machine learning in agricultural ticketing').



# Thank you.

Contact information:

Zach Vernon  
zach.vernon@sap.com

