

# SUSE uses SAP, too

Not just a good SAP partner – like you, we're a Customer

# Let's look under the hood

1. What we started with
2. Migrating to S/4
3. Partnering with Partners
4. Journey to S/4HANA Cloud
5. Other SAP solutions
6. Integrations with other enterprise apps

# From Multiple Solutions for Finance & Procurement

Carve-out style project as SUSE split from Micro Focus in 2019

SUSE team replaced mixed Oracle and ECC solutions with S/4HANA



# Partners



Accenture tackled the whole IT infrastructure setup as business application transformation.




SAP promoted S/4 HANA Cloud to support SUSE's transformation to a stand-alone enterprise.  
BTP Event Mesh allows for integration with other business solutions & processes

## Multi-cloud

Hyperscalers help SUSE achieve scale with flexibility; Multicloud rewards our partners and helps us avoid lock-in.

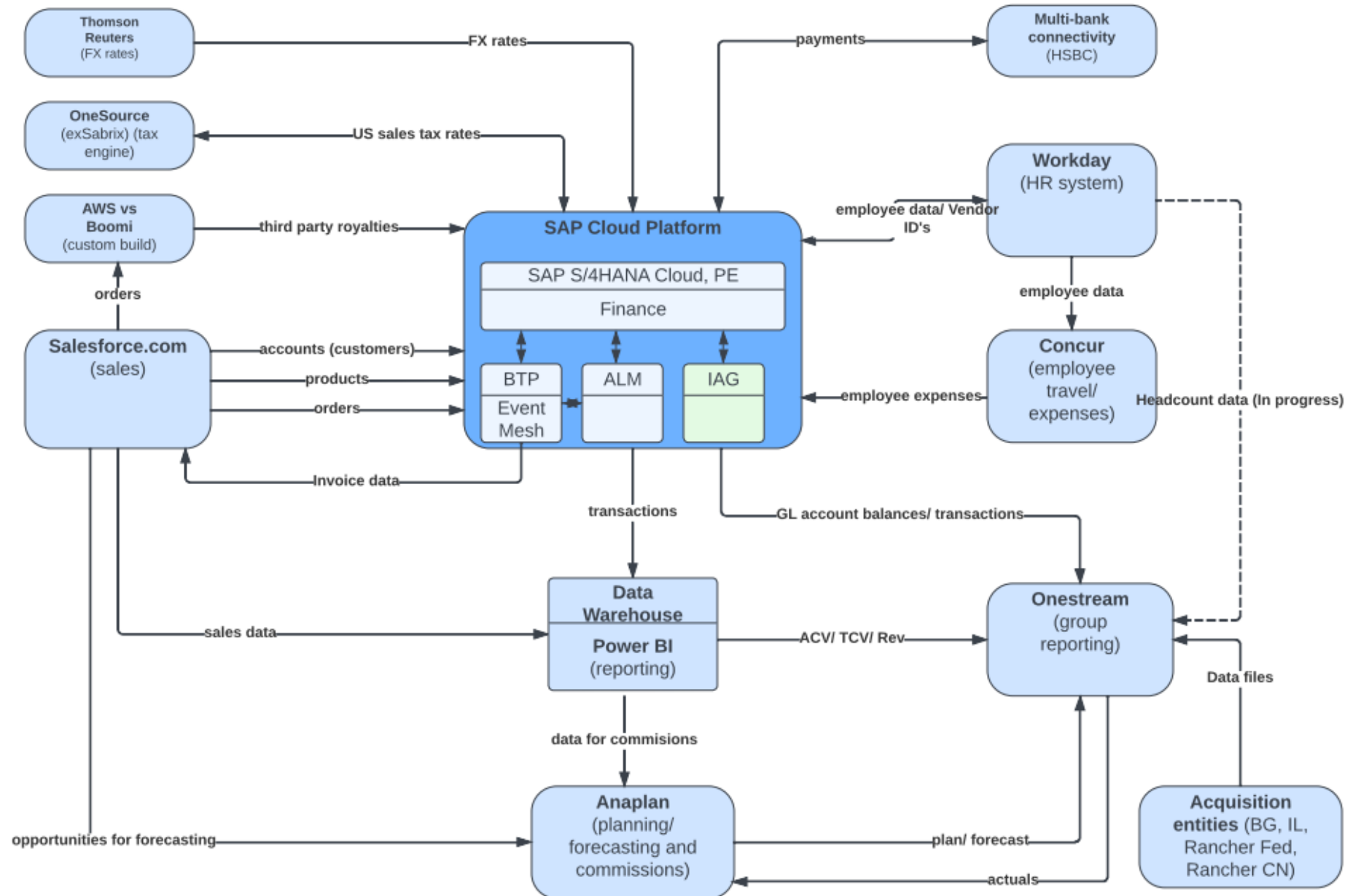


A world map with a dark blue background. The map is divided into five color-coded regions: North America (red), Europe (purple), Asia (green), Africa (orange), and South America/Australia (light blue). Numerous glowing white nodes are placed across the map, connected by thin, curved blue lines that represent a global network or data flow.

S/4 Deployed in 40 entities in 35 countries  
5 phases over 18 months  
Staged according to business criticality

# Scope

1. R2R – Record to Report
2. P2P – Procure to Pay
3. Integrations (ongoing) with:
  - **Salesforce** for CRM & Opportunity Management
  - **Anaplan** for Commissions Accounting
  - **Workday** for HR/HC Management
  - **Concur** for Travel & Expense Management
  - **PowerBI** for business analytics
4. **More to come** – SAP solutions and others as SUSE continues to expand into new markets & categories

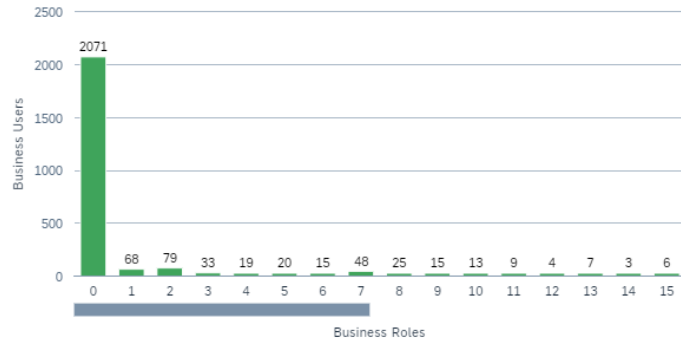


# Usage metrics & metering

**Number of Assigned Business Roles**

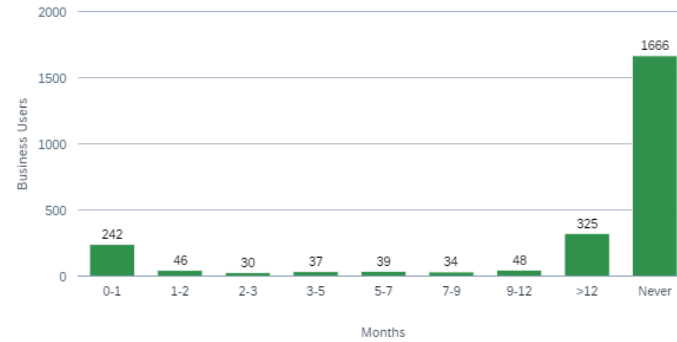
Business Users: 2467

1



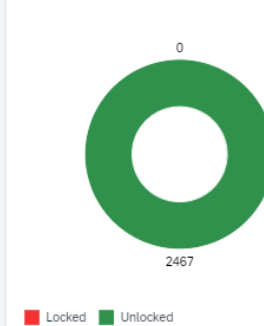
**Last Logon of Business Users**

Business Users: 2467



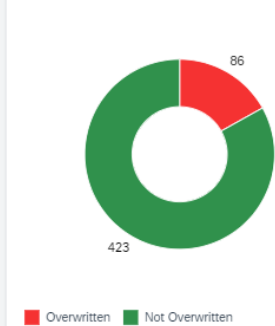
**Locked Business Users**

Business Users: 2467



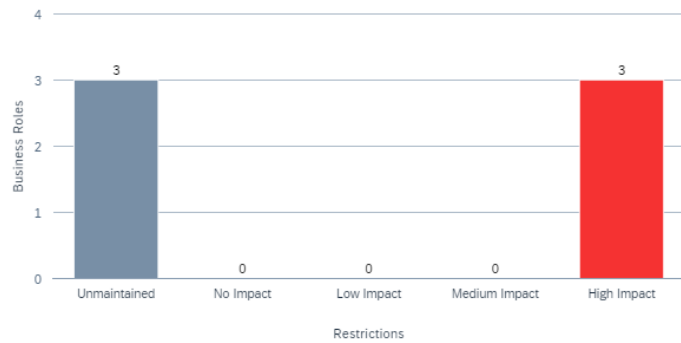
**Roles with Default Values**

Business Roles: 509



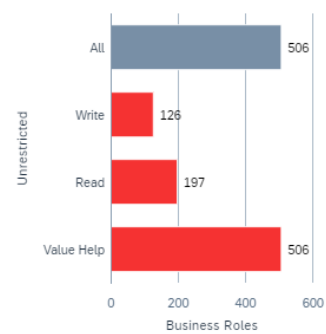
**Business Roles with Unmaintained Restrictions**

Business Roles: 3



**Unrestricted Business Roles**

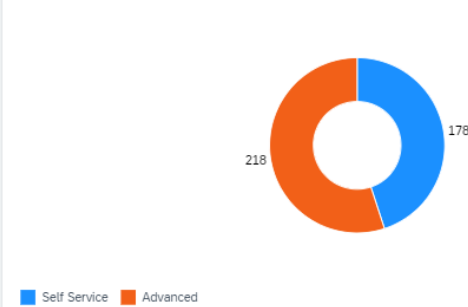
Business Roles: 506



**Business User Price Categories**

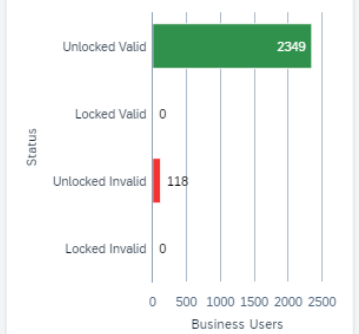
Business Users: 396

2



**Validity of Business Users**

Business Users: 2467





# Learnings

Pick a Why (event? deadline?)

**Build out** a Team to build out a Plan

**Consider** many possibilities, but not all of them just for the sake of checking boxes

**Be** realistic about what people and teams can do – no dumb dependencies

**Consider** scope and order of events

**Get to work** & prepare to adjust & improvise

**Report** on & **Celebrate** the successes

Thank you.

