

A person wearing a hat and dark clothing is walking away from the camera down a path in a field. The field is divided into rows of crops, some of which are covered with plastic mulch. In the background, there are trees and a fence line. The overall scene is a rural agricultural setting.

Implementing New Approaches & Processes


Simplot



Chris
King

*Finance Systems
Manager*

- 10 Years of FP&A & Systems
 - **allegiant**
 - **Lamb Weston**
 - **Simplot**
- Developed & Integrated SAC
 - Detailed project forecasting
 - Systematic approval hierarchy
 - System integrity audit
 - Depreciation forecast module
- Established COE
- Built Process & Data Governance






Simplot

Corporate
Consolidation



AgriBusiness



Global Food



Land & Livestock

Simplot
Corporate
Consolidation



Life Sciences



Land & Livestock



AgriBusiness



Global Food



The central logo features the word "Simplot" in a white, sans-serif font with a stylized leaf above the letter 'i'. Below it, the words "Corporate Consolidation" are written in a smaller, white, sans-serif font. The entire logo is contained within a light teal rounded rectangle.



Life Sciences



SAP Analytics Cloud (SAC)

Simplot's system of record for Capital Planning. With SAC we are able to track & report on:

- Project spend, details & timing
- Project approval
- Asset depreciation
 - *All current & forecasted assets*



Capital Planning Goals

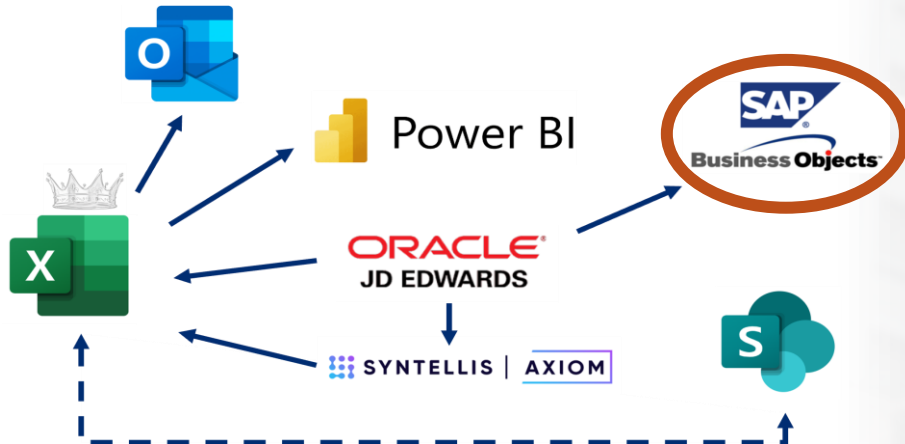
Solution #1

- Detailed Project Planning
- Auditable Approval Workflow
- Global Unified Process
- Consolidated Data
- Flexible Reporting / Drill



The Old CapEx

- Rigid Reporting
- Varied Processes by BU
- Relied on Excel & Outlook
- Frustrations



Foundation in SAP

- Allows for models that can be:
 - Adjusted & Enhanced
 - Connected to:
 - Legacy ERPs
 - S/4 Hana
- Robust & Flexible
 - Explore data to understand causes
 - Simplify Transformation into Modules
- Iterative
 - Easy to learn but easy to make mistakes
 - Quickly build, test & deploy



Financial Model

- Project Creation
- Forecast
- Submission



Data Capture

Project creation

- Standardized data input
- Identify the:
 - **Who** *needs it*
 - **What** *is it*
 - What type of assets will be added
 - Is this a growth project
 - etc
 - **When** *will we buy it*
 - **Where** *will it be*
 - **Why** *(the need & benefits)*

Simplot 1. Create New Project

① Project ID: 3722	① Project Creation Date: 02/23/2023	① Org Hierarchy*: <input type="text"/>
① Project Title*: <input type="text"/>	① Project Sponsor*: <input type="text"/>	① Company Code*: <input type="text"/>
① Description*: <input type="text"/>	① Project Manager*: <input type="text"/>	① Category*: <input type="text"/>
① Project Risks: <input type="text"/>	① Business Priority: <input type="text"/>	① Asset Type*: <input type="text"/>
① Project Benefits: <input type="text"/>	① Fiscal Start Date*: <input type="text"/> <input type="text"/>	Select Multiple Depn. Business Unit? <input type="checkbox"/>
① Retired Assets: <input type="text"/>	① Fiscal Depr Start Date: <input type="text"/> <input type="text"/>	① Depreciation Business Unit*: <input type="text"/>
① Retired Assets Description: <input type="text"/>	① Operational Risk: <input type="text"/>	① Asset Class*: <input type="text"/>
	① Operating / Strategic*: <input type="text"/>	<input type="button" value="Add Project"/>
	① Commercial Category: <input type="text"/>	
	① Capitalized Interest: <input type="text"/>	
	Project Tag: <input type="text"/>	

Forecasting

- Data security
- Live Model
- Direct inputs to Project Model
- Direct Links to subsequent steps

2. Maintain Project Global Currency (USD) Local Currency

1. Input Forecast New Proj... 2. Allocations & Financials 3. Update Project 4. Maintain Forecast all Proj... Set global project

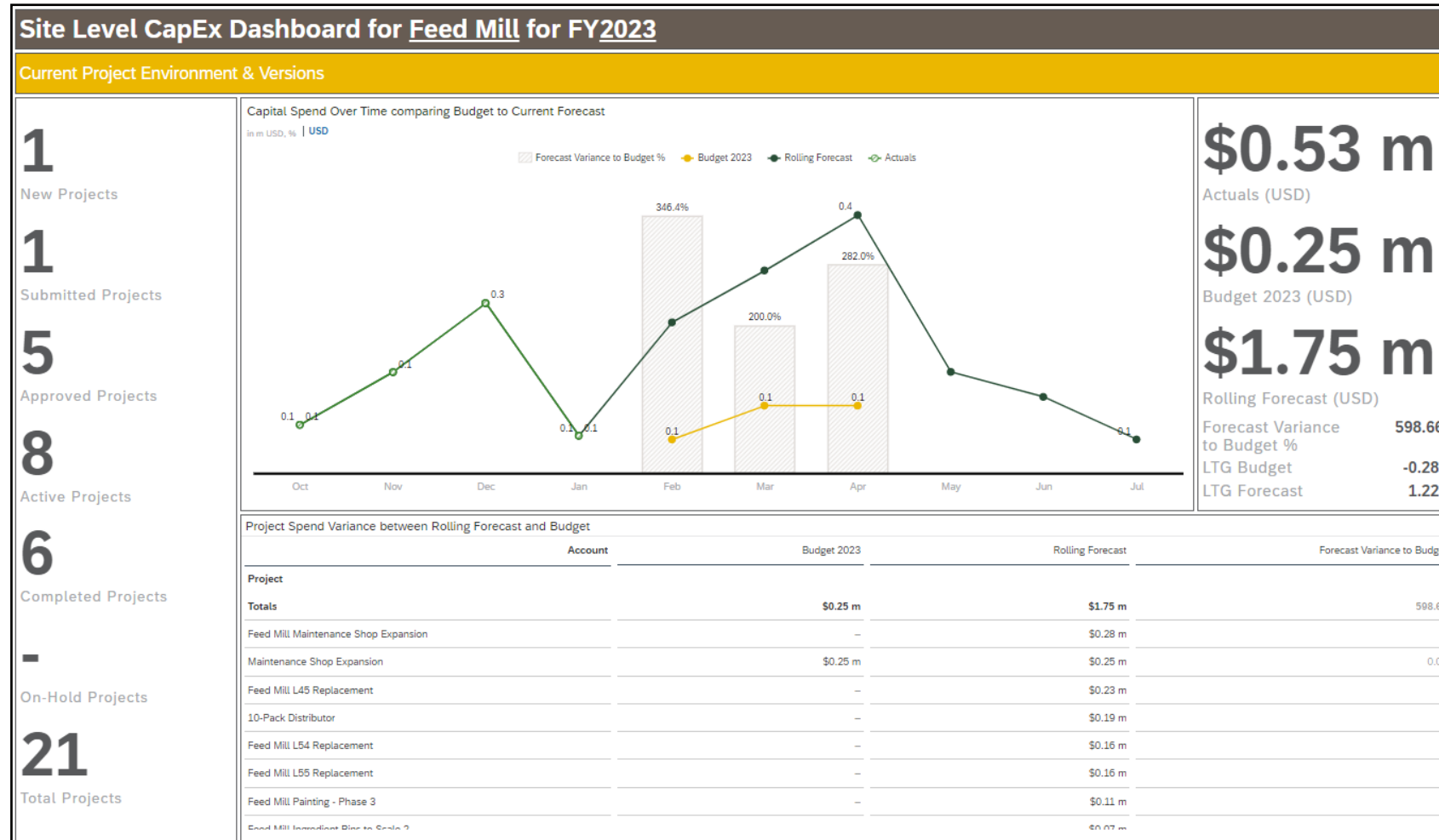
**Insert the Input Values in USD and Dates Are shown in FISCAL YEAR not calendar year*

Project	Version Date	Account	Actual		Input Forecast													
			> 2021 Spend	> 2022 Spend	Sep (2023) Spend	Oct (2023) Spend	Nov (2023) Spend	Dec (2023) Spend	Jan (2023) Spend	Feb (2023) Spend	Mar (2023) Spend	Apr (2023) Spend	May (2023) Spend	Jun (2023) Spend	Jul (2023) Spend	Aug (2023) Spend	> 2024 Spend	> 2025 Spend
Project			\$9,940,769	\$1,739,022		\$71,605	\$149,604	\$251,738	\$55,507	\$223,200	\$300,000	\$382,000	\$150,000	\$113,000	\$50,000			
500521045 Rolls...	Completed		\$99,148	\$175,038														
500519046 Proje...	Completed		\$9,775,371	\$298,455														
2285 Maintenanc...	New																	
1064 Ingredient ...	Submitted			\$248,661	\$29,802	\$8,808												
1071 Feed Mill H...	Completed	\$47,286.6																
1072 Feed Mill H...	Completed	\$63,209.92					\$44,610											
1076 Feed Mill 1...	Completed	\$36,526.82																
1824 Feed Mill P...	Completed	\$290,000																
1837 Feed Mill R...	Active	\$64,200		\$32,487				\$38,407	\$69									
2911 Feed Mill L...	Approved	\$225,900								\$75,000	\$100,000	\$50,500						
2912 Feed Mill L...	Approved	\$156,500										\$50,000	\$75,000	\$31,500				
2913 Feed Mill L...	Approved	\$156,500										\$50,000	\$75,000	\$31,500				
2914 Feed Mill M...	Approved	\$281,800								\$50,000	\$100,000	\$131,500						
2941 Feed Mill M...	Active	\$139,100					\$34,948											
2942 Feed Mill G...	Completed	\$12,100																
2943 Feed Mill P...	Active	\$100,000							\$10,989									
2983 Feed Mill N...	Completed	\$14,000					\$12,710							\$50,000	\$50,000			
3035 Feed Mill In...	Completed	\$77,500					\$25,405	\$47,724										
3165 Feed Mill H...	Active								\$24,254									
3174 Feed Mill H...	Approved									\$48,200								
3285 Feed Mill P...	Approved																	
500521044 Ware...	Completed			\$205,315														
500521062 C15 ...	Completed		\$30,204	\$127,650														
500522002 10-P...	Active			\$143,321	\$0	\$11,990	\$165,608	\$8,015										
500522006 SV3 ...	Completed			\$14,611	\$41,803													
500522023 Autot...	Completed			\$7,070														
500522030 10-P...	Active			\$12,300					\$6,700									
500522031 Dairy...	Active			\$12,050					\$6,900									
1389 Feed Mill D...	Completed	\$28,570		\$28,570														
1752 Air Dryer fo...	Completed	\$18,200		\$14,342														
1753 Feed Mill B...	Active	\$46,000				\$11,134												
1970 Feed Mill 1...	Completed	\$11,300		\$9,761														
1973 Feed Mill ...	Completed	\$40,000		\$27,354														
2750 Pellet Mill ...	Approved	\$25,300																
500521050 Boo...	Completed			\$39,900														
500521059 Unint...	Completed			\$15,356														
500521055 Secu...	Completed		\$36,046	\$27,695														
500522029 Over...	Completed			\$60,256														



Example Report

- Dynamic Hierarchy
- Current Status
- Multiple Versions
- Calculations & Comparisons
- User / Site Specific



Connected Models

- Project Creation
- Forecast
- Submission



Connected Models

- Project Creation
- Forecast
- Submission



Connected Models

- Project Creation
- Forecast
- Submission
- Track Actuals
- Version Comparison



- Project Created
- Route Assigned
- Emails Sent
- Approval

Submit/Approve

The bridge between models.

At this point a Capital Project is:

- Created
- Forecasted
- Ready for approvals

Submit Project

Simplot

Approve Reject Select Filter [Details](#)

Sharepoint Maintain

USD Local Currency

Capital Requested \$100,000

(WC + Start Up + Other) \$0

Project Title: Sustainability Test Project
Project Number: 4897
Org Hierarchy: Don Plant
Company Code: NA00320-US Wholesale
Fiscal Proj Start Date: 202401
Project Sponsor: Tara Krivoshein
Project Manager: Art Stevens
Asset Type: Capital Asset - Planned
Category: Sustainability
Operating or Strategic: Operating

Project Description: This is a project to test the sustainability functionality within SAC

Additional Comments:

Discounted Payback Period (Years)	0.00
IRR (%)	0.00 %
NPV	\$0

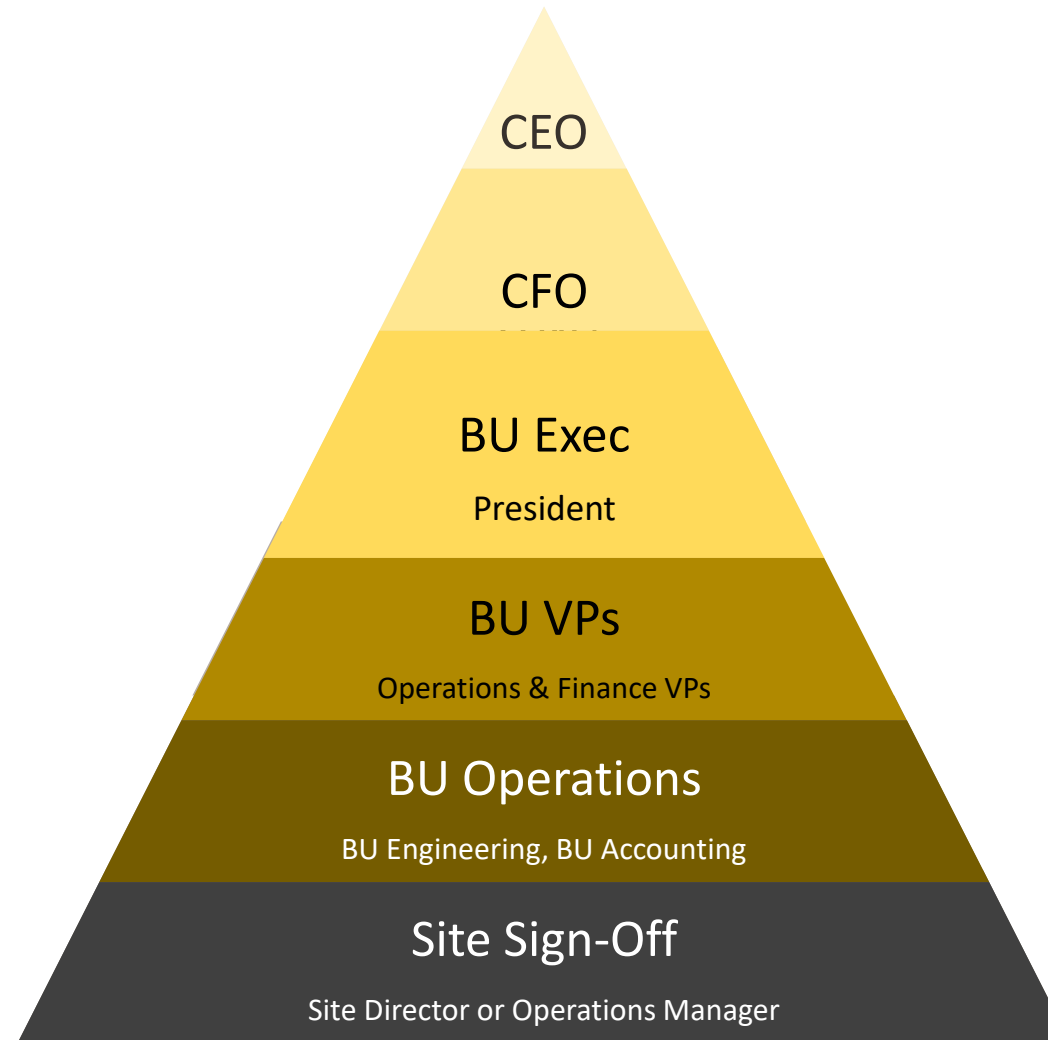
Approval Routing

Dynamic routes based on:

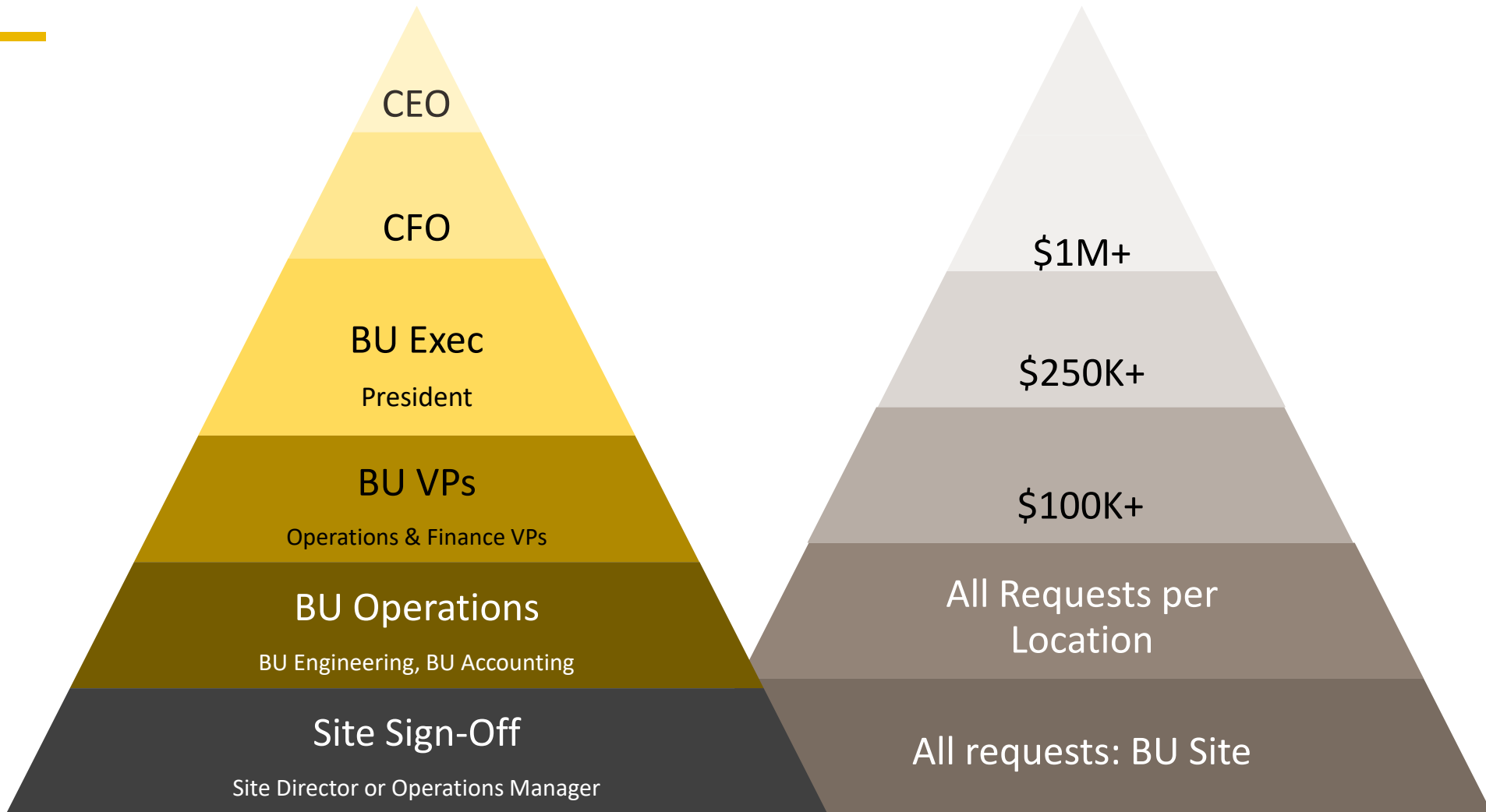
- Project Size
- Location / Org

Parallel Approvals via:

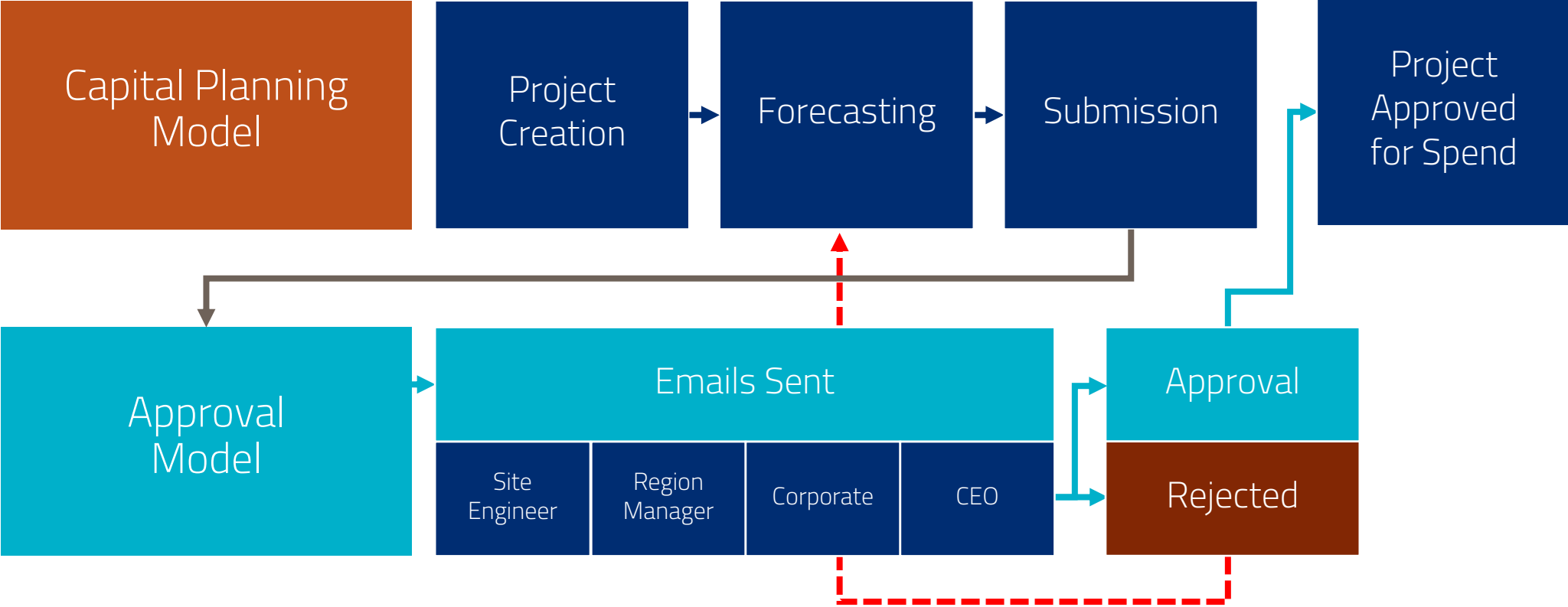
- Emails
- App Notifications



Approval Routing

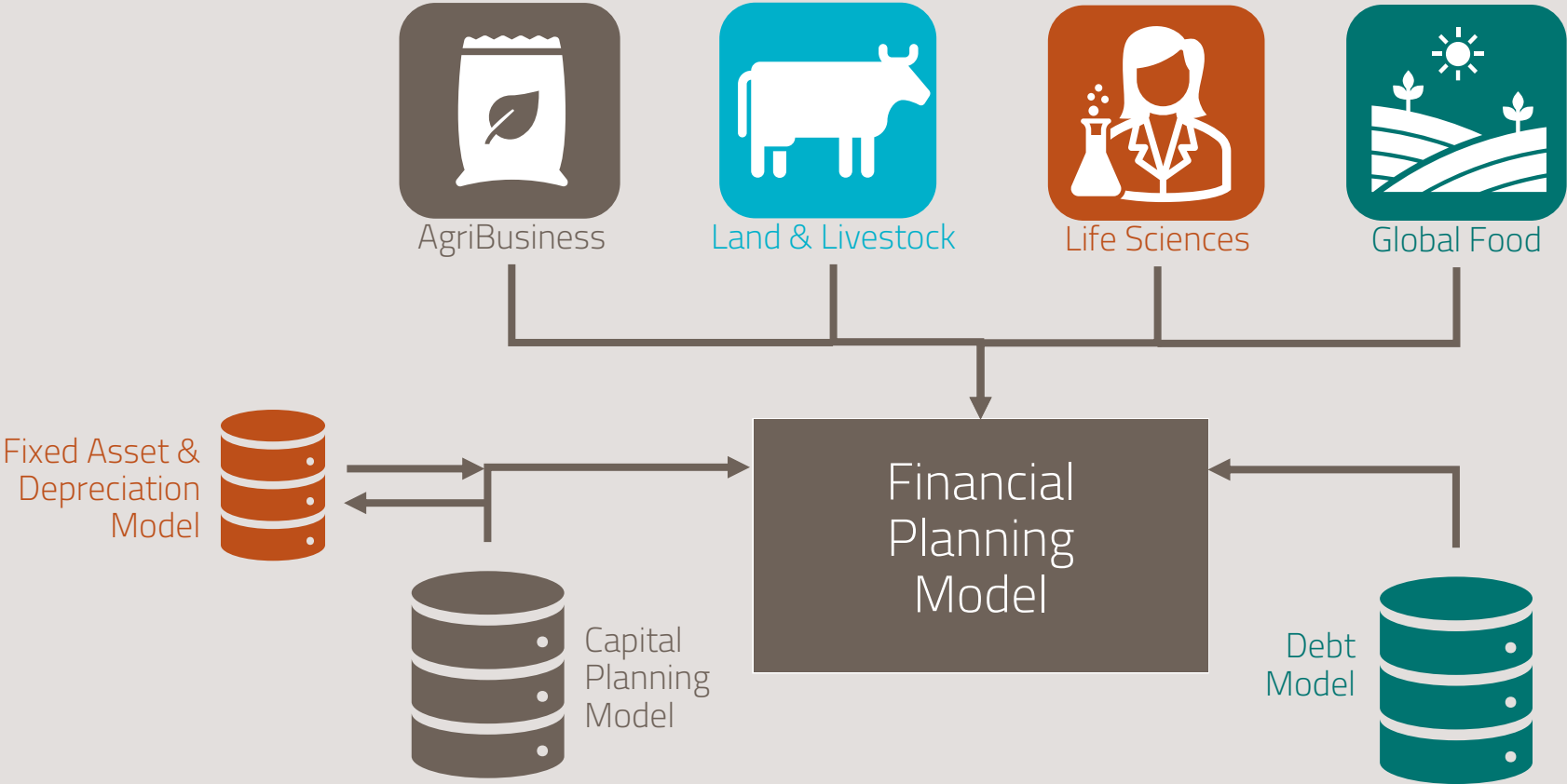


Connected Models



Financial Planning Model

Solution #2



Business Problems Solved by SAC

Prior State	Current State
Forecast submitted in Excel	All LOBs are collaborating in SAC
Each LOB model was different	Inputs and outputs are standardized
Manual process for Actuals	Actuals to SAC process automated
Difficult to drill down	Multiple org hierarchy drill-down

Partnership with Analysis Prime



Blueprinting and design with their team felt seamless



They were readily available for support



Mix of experts in all areas of the project

Data, Design, Finance, Project Management, Tax



Made a constant effort to save us from ourselves

Depreciation Model

Solution #3

Leverage SAC to calculate a unified depreciation forecast for:

- **All Current Assets** (Legacy ERP & S/4 Hana)
- **All Future Assets** (SAC CapEx data)

Connected Models

- Project Creation
- Forecast
- Submission
- Track Actuals
- Version Comparison



Submission
→

←
Approved to Spend



- Project Created
- Route Assigned
- Emails Sent
- Approval

Adding Depreciation



Submission



Approved to Spend



Adding Depreciation



Submission



Approved to Spend



Fixed Assets
(Legacy ERP)



System calculated depreciation forecast

- Project Completion Date
- Asset Life & Remaining Life
- Book Value



AgriBusiness



Global Food



Land & Livestock

Simplot
Corporate
Consolidation



Life Sciences



Land & Livestock



AgriBusiness



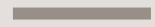
Global Food



Life Sciences

The central element is a light teal rounded rectangle containing the Simplot logo (a stylized leaf above the word "Simplot") and the text "Corporate Consolidation" below it.

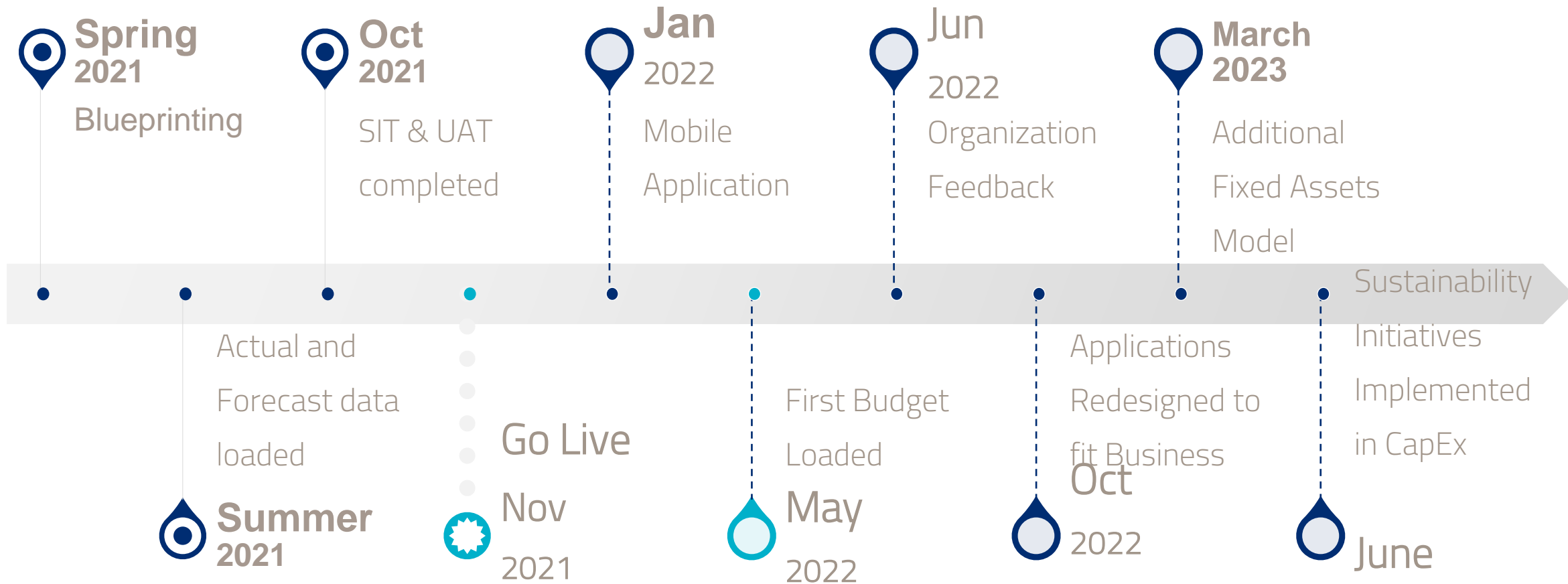
Thanks!



Chris.King@Simplot.com

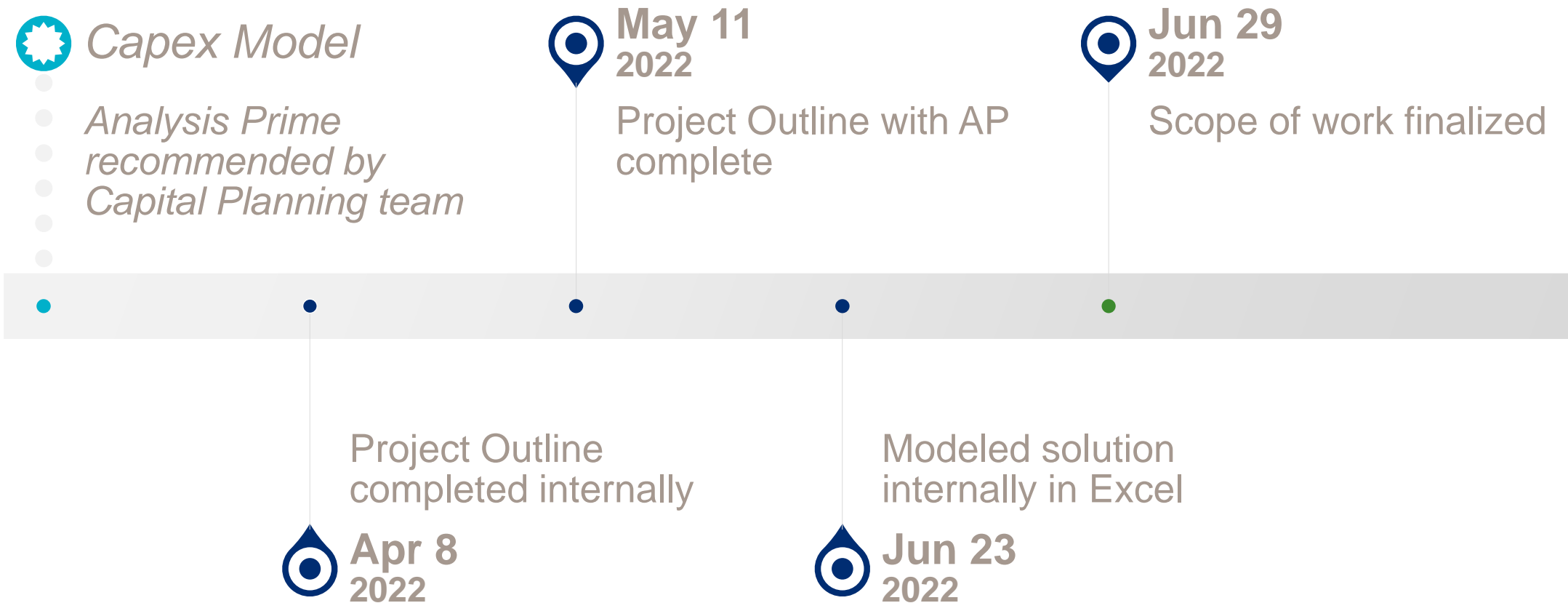
Timeline

CapEx Model



Evaluation Process

Financial Model



Implementation Process

Financial Model

