

Benefiting from SAP's UX innovations

TJ Keitt, VP SAP Design
August 2022

Public

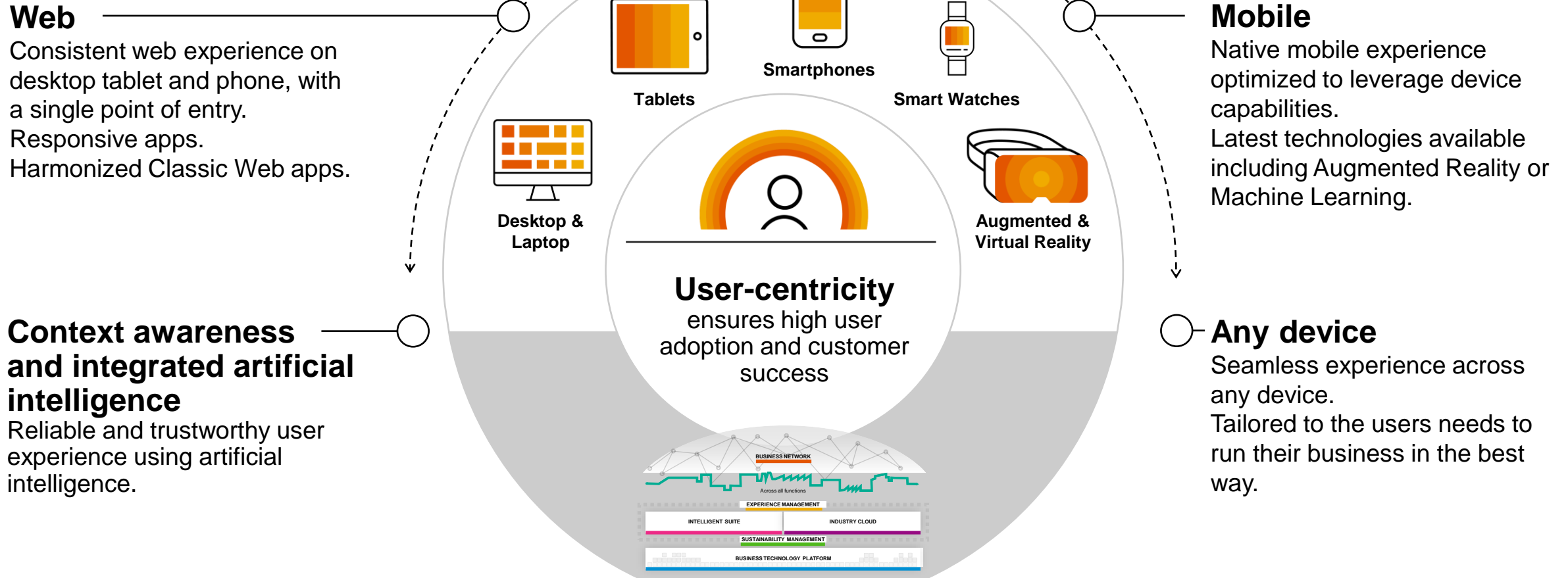
Our Aspiration

Users love using SAP products

They help every person get their work done faster, more intuitively, and with better outcomes than ever before.

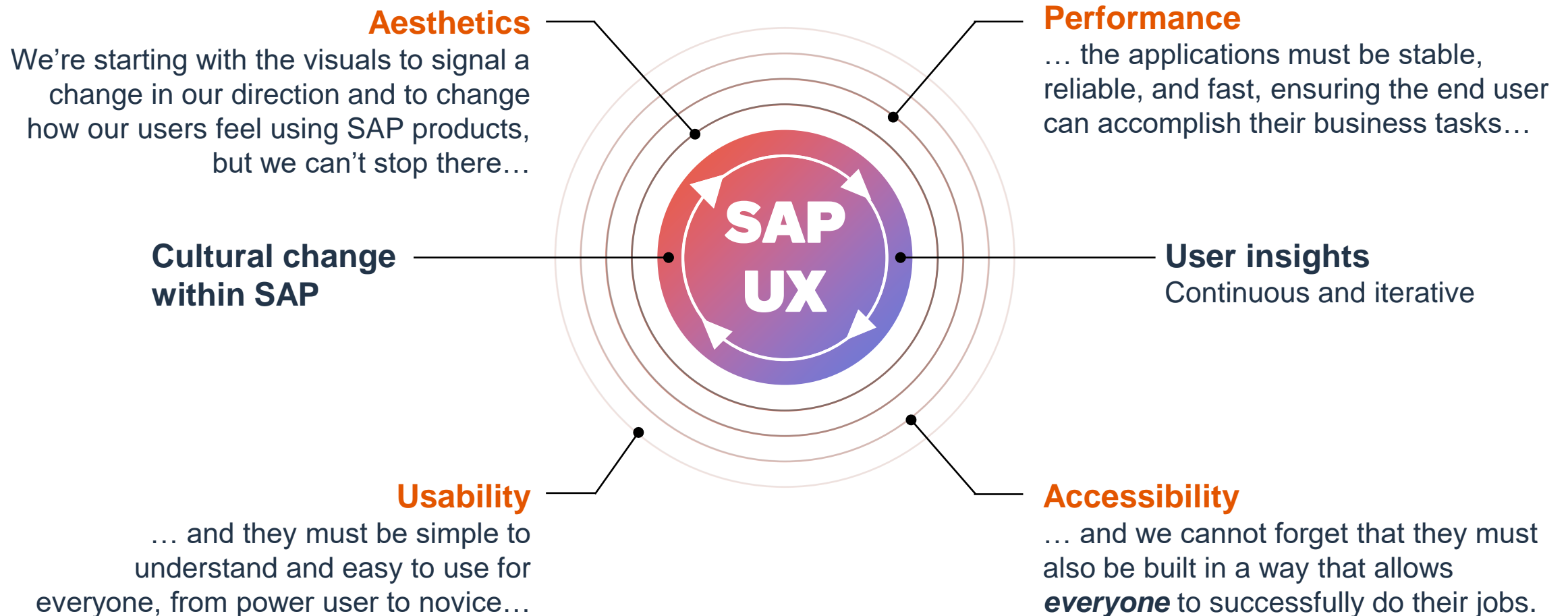


Overall UX strategy



ONE UX for the Intelligent Enterprise,
One User Experience for all Intelligent Enterprise Applications, e.g. SAP S/4HANA

SAP UX strategy – four pillars



This is the current state of planning and may be changed by SAP at any time without notice.

Agenda

SAP's design system improves usability

- Horizon theme requires fewer clicks to get work done

SAP Fiori streamlines business processes

- New product home page and mobile apps simplify access

SAP Fiori connects people

- Microsoft Teams integration allows better collaboration

Where to learn more

SAP's design system improves usability

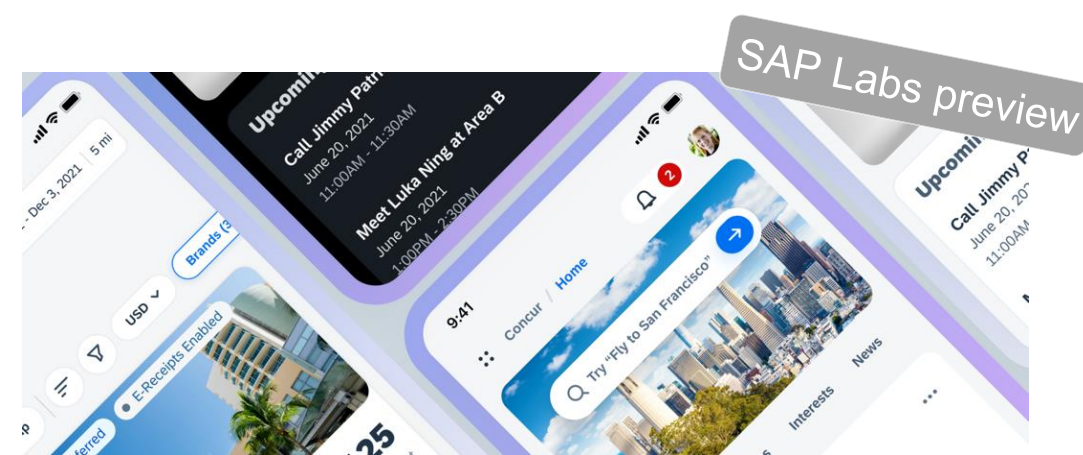


Introducing the Horizon theme

We know that first impression matter. That's why we're driving the next evolution for SAP Fiori by focusing on fresh new themes in order to make our products more approachable and delightful for our everyday users.

Our user insights-informed transformation will continue in the coming months with improvements across all four of our design pillars:

- Aesthetics
- Performance
- Accessibility
- Product Usability



SAP Horizon will further unify the SAP user experience

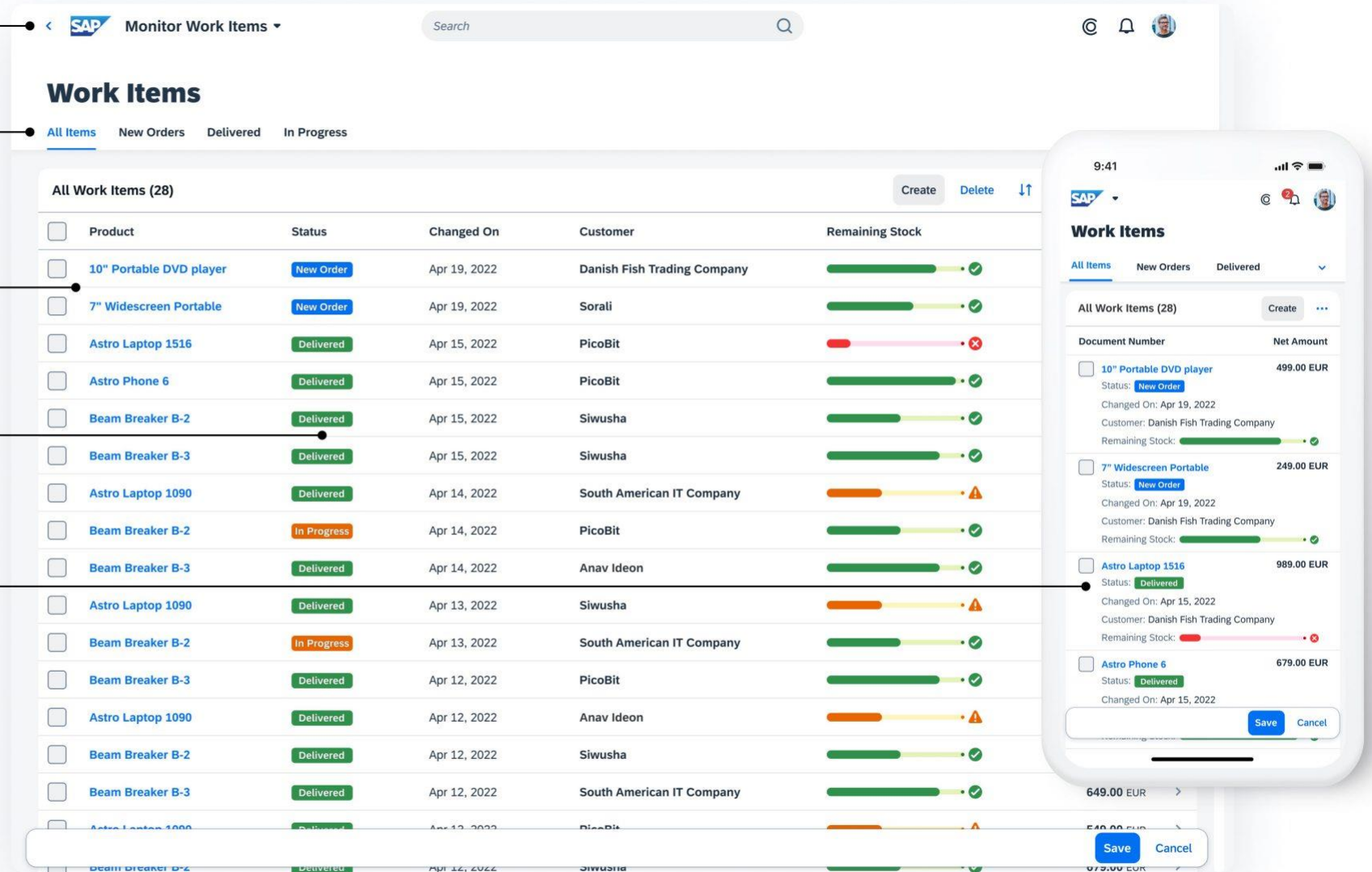
Improving information hierarchy with a simplified header bar

Emphasizing important information using bold SAP typography (72 bold font)

Creating a sense of focus with more contrast, space, and visual hierarchy

Making components clearer and more understandable using simplified aesthetics

Ensuring an easy-to-learn and coherent experience across devices by using a mobile-first approach.



SAP Fiori streamlines business processes



Business Value: balancing productivity & wellbeing

Get the information I need to drive my business

Get my job done quickly & on any device

Optimize my work environment

To do list (combining myInbox tasks & situations)

Monitoring tiles

Monitoring cards (UI integration cards)

News feed

Search

Favorite apps and pages

Recently & Frequently used apps

Logical navigation through Spaces & Pages

Page layout personalization

Page content composition from app library

Page content composition from your cards

Spaces & pages packages for role-based content

The SAP My Home transformation



New My Home in SAP S/4HANA Cloud

New product homepage for SAP S/4HANA Cloud makes users more efficient

Enjoy the Horizon visual theme

Rely on Spaces & Pages

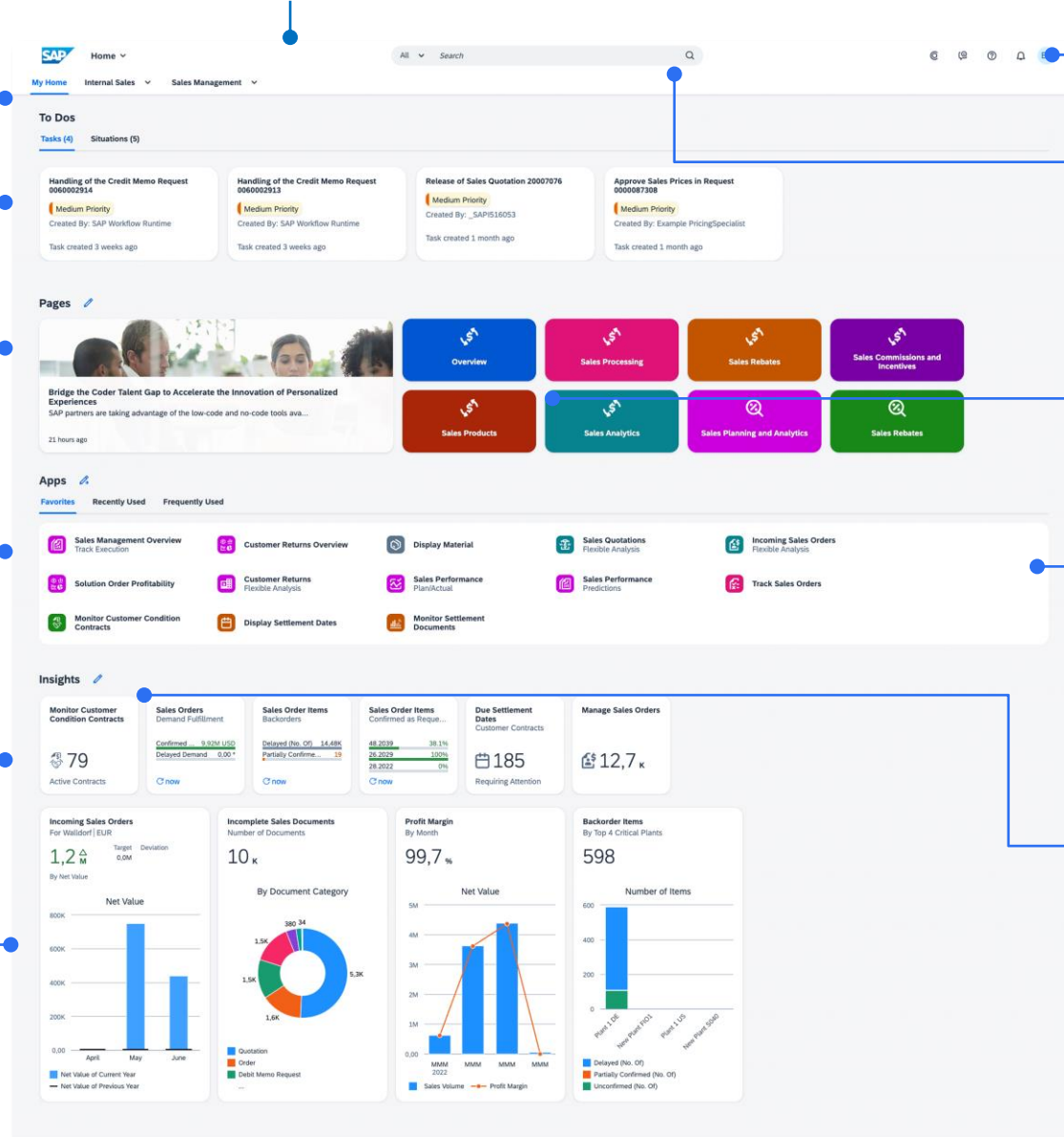
Get my To Do list combining My Inbox and My Situations items

Access my most critical pages quickly

Launch my most relevant apps

Monitor your business thanks to Dynamic or Smart Business tiles

Track your business trends through your pinned cards



Personalize the section shown on the page and their display order

Search & Launch any of my apps instantly

Identify instantly which page my app belongs to (Color coding)

Personalize the content of the section

SAP Mobile Start – Meet the SAP Mobile Experience



SAP's Mobile Experience

The Intelligent Enterprise at your fingertips

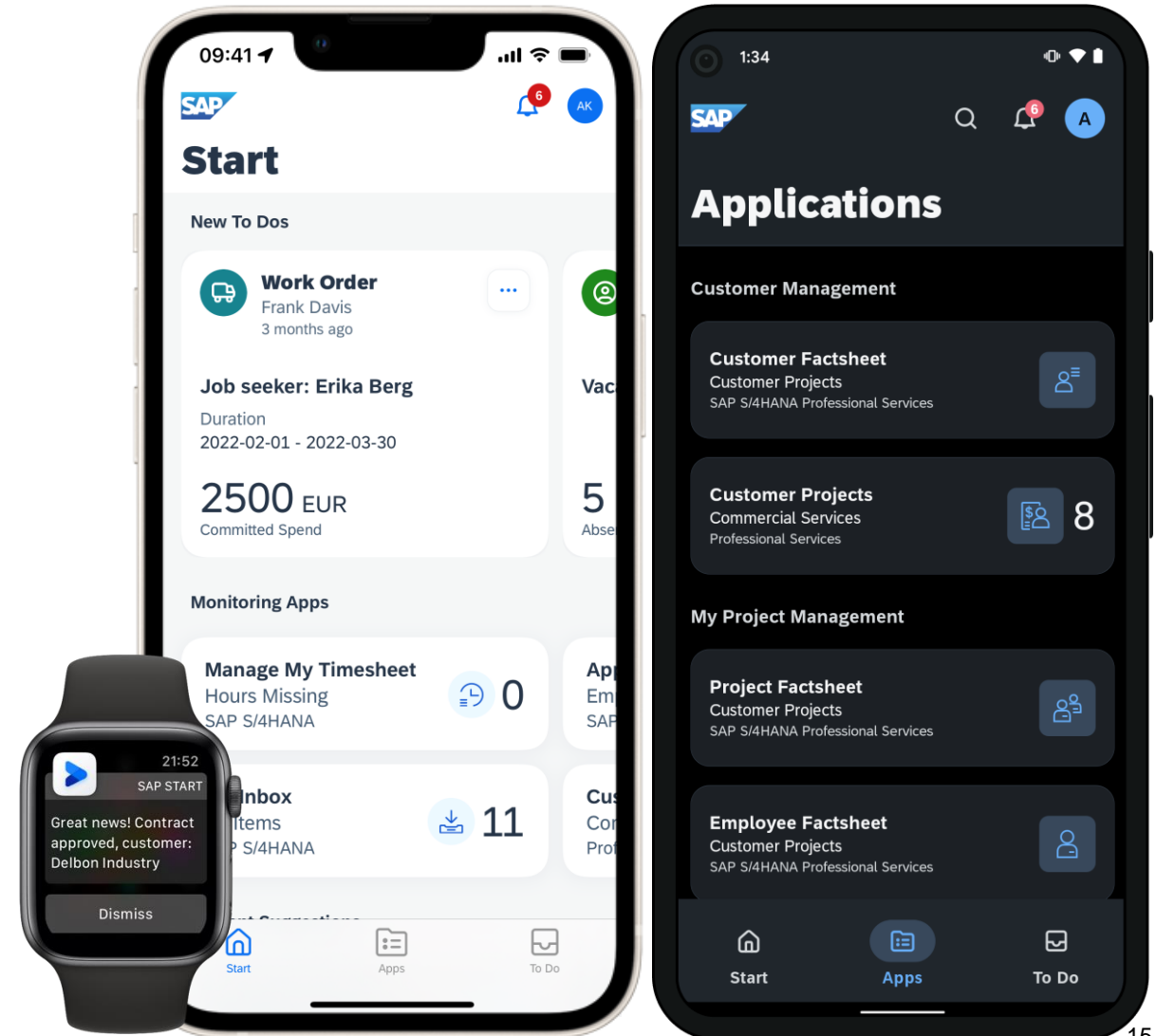


[Link to the video](#)

SAP Mobile Start - Key Capabilities and Value Proposition

Your native entry point to the Intelligent Enterprise

- Seamless mobile access to the Intelligent Enterprise, its applications (native or web), web content, data or SAP S/4HANA notifications to quickly address business issues
- Consumer-grade user experience and superior performance, designed for an intuitive and personalized native OS experience with enterprise-grade capabilities
- Consolidated view on all tasks and workflows approval requests, enabling end-users to trigger direct actions thanks to SAP Task Center integration
- Improved productivity, agility and work flexibility thanks to mobile
- Stay up-to-date and react quickly to any business-critical situation
- Persona-centric configurations, tailored to any user needs



SAP Fiori connects people



Share to Microsoft Teams improves collaboration of SAP S/4HANA Cloud users

Seamless integration

- Share content from SAP Fiori elements apps with other Microsoft Teams users

Access to live data

- Link to filtered data in your SAP S/4HANA Cloud system

Pre-integrated

- Activation with only one setting

No additional costs*

- Included with SAP S/4HANA Cloud subscription

*Microsoft Teams needs to be licensed separately

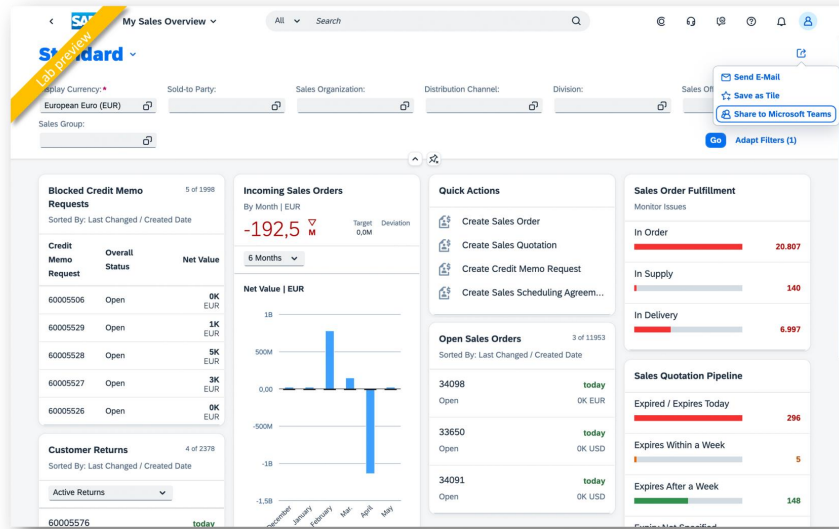
The screenshot shows the SAP Fiori 'My Sales Overview' dashboard. A yellow banner in the top left corner reads 'Lab preview'. The dashboard includes a search bar, filter options for 'Display Currency' (European Euro (EUR)), 'Sold-to Party', 'Sales Organization', 'Distribution Channel', and 'Division'. A 'Share to Microsoft Teams' button is highlighted in a tooltip, along with 'Send E-Mail' and 'Save as Tile'. The main content area features several widgets: 'Blocked Credit Memo Requests' (5 of 1998), 'Incoming Sales Orders' (By Month | EUR, -192,5 M, Target 0,0M, 6 Months), 'Quick Actions' (Create Sales Order, Create Sales Quotation, Create Credit Memo Request, Create Sales Scheduling Agreement...), 'Sales Order Fulfillment' (Monitor Issues, In Order: 20.807, In Supply: 140, In Delivery: 6.997), 'Open Sales Orders' (3 of 11953, Sorted By: Last Changed / Created Date, 34098 Open today OK EUR, 33650 Open today OK USD, 34091 Open today OK USD), and 'Sales Quotation Pipeline' (Expired / Expires Today: 296, Expires Within a Week: 5, Expires After a Week: 148). A bar chart shows 'Net Value | EUR' from December to May, with values ranging from -1,5B to 1B.



Microsoft Teams integration for SAP S/4HANA Cloud

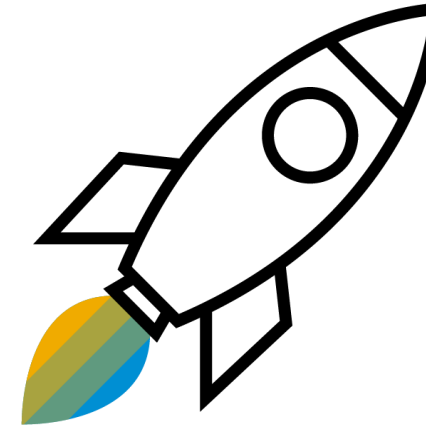
LAB PREVIEW

Next steps



Phased roll-out of
“Share to Microsoft Teams”
via Early Adopter Care program

Q3/22



Planned General Availability
in SAP S/4HANA Cloud

Q2/23

Summary on SAP Fiori

- Fiori brings more intuitive way of working to employees
- Visible changes in the screens, but also streamlining interactions in business processes and enabling collaboration
- Will integrate more intelligence over time – example today is Situations where urgent tasks are brought to the user
- Several paths forward – most important thing is to take some action to move towards SAP Fiori UX today

Where to learn more



SAP Community Page

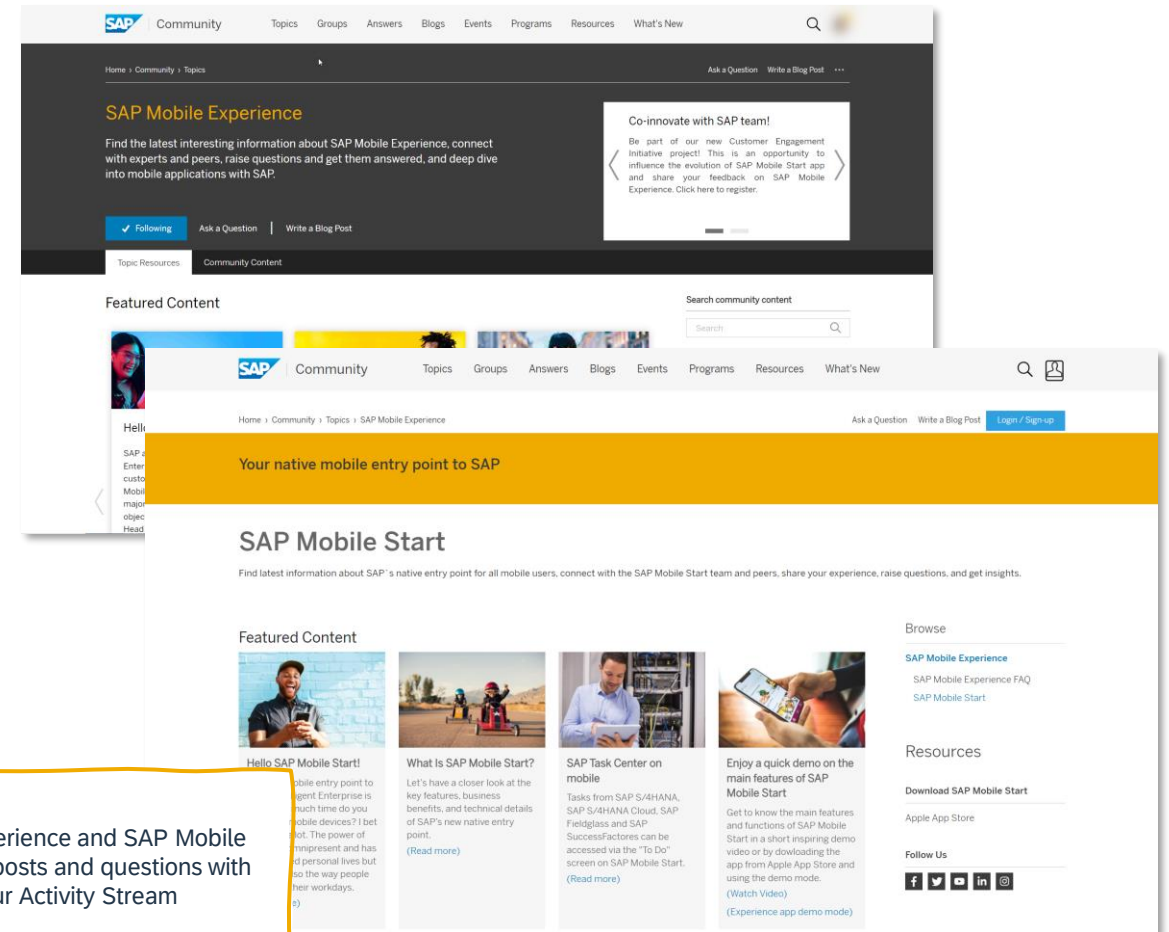
Connect with development and peers, share your experience, raise questions, and get insights

SAP Community offers you to

- Get actively involved by sharing your experience or asking/answering questions
- Connect with SAP Mobile Experts
- Get latest updates by SAP development
- Benefit from blogs provided by experts that will help you to onboard SAP Mobile Start seamlessly

SAP Mobile Experience @ SAP Community

SAP Mobile Start @ SAP Community



Follow the SAP Mobile Experience and SAP Mobile Start tags so that new blog posts and questions with this tag appear in your Activity Stream

SAP Mobile Start

Selection of links, videos, e-books



Useful links to learn about SAP Mobile Experience

- Learn more on sap.com/mobile
- SAP Mobile experience video [here](#)
- SAP Mobile Start video [here](#)
- Review our latest [Webinar](#)
- Engage with our experts on our [community](#)
- View the SAP Mobile Start [Roadmap](#)
- Discover our [SAP Developer Center](#)
- Read the FROSTA [customer story](#)

Latest Event Recordings TechEd 2021 & Sapphire 2022

- Driving the Intelligent Enterprise with Digital Transformation ([YouTube](#): 10:30 – 13:00)
- Dive into the User Experience and Design Journey of SAP Solutions: [here](#)

SAP Mobile Start Ebook

Learn about SAP Mobile Start key capabilities and how it delivers a new way of working for our selected personas

[Read our Ebook!](#)

Where to learn more

SAP S/4HANA Cloud Product homepage

- Video preview <https://www.sap.com/assetdetail/2022/01/84cbc129-147e-0010-bca6-c68f7e60039b.html>
- Join the influence program <https://influence.sap.com/sap/ino/#/campaign/2986>

Collaborative ERP with Microsoft Teams integration

Horizon theme for SAP Fiori

- Preview video <https://youtu.be/35AGfnozvarl>
- <https://blogs.sap.com/2021/11/17/sap-fiori-new-horizon-visual-theme-available-as-preview-we-want-your-feedback/>
- <https://blogs.sap.com/2021/11/17/saps-ui-technologies-supporting-the-new-horizon-visual-theme-of-sap-fiori/>

SAP Fiori elements and SAP Fiori tools


- www.sapfiorielements.com and www.sapfioritools.com

Join the SAP UX community

ASUG

- UX Think Tank; email Amanda McGathey Amanda.McGathey@asug.com
- UX Influence Council; email Amanda McGathey Amanda.McGathey@asug.com

SAP

- SAP Fiori elements roundtable
<https://blogs.sap.com/2021/07/31/peer-to-peer-learning-at-the-sap-fiori-elements-and-sap-fiori-tools-roundtable/>
- SAP Screen Personas practitioner forum
<https://www.sap.com/cmp/nl/sap-screen-personas-practitioner-forum/index.html>
- Subscribe to the SAP Fiori development newsletter  <https://www.sap.com/cmp/nl/sap-fiori-development-newsletter/index.html>



Thank you.

Contact information:

TJ Keitt tj.keitt@sap.com

Appendix

Frequently Asked Questions

Is the new *My Home* a dashboard?

- The definition of dashboard: A dashboard is a visual display of all of your data. While it can be used in all kinds of different ways, its primary intention is to provide information at-a-glance, such as KPIs.
- So, the new *My Home* covers some dashboard capabilities but offers more than this!

Is the new *My Home* only for Public Cloud?

- At this stage yes. Depending on the adoption and the requests, this might be reconsidered in 2023.

Is the new *My Home* only available with Spaces & pages and the Horizon visual theme?

- Spaces & pages is an absolute prerequisite. Even if the adoption remains low, spaces and pages is the go to solution for each and every SAP S/4HANA customer.
- Explicit recommendation is use with Horizon theme.

What are the persona archetypes that are addressed by the new *My Home*?

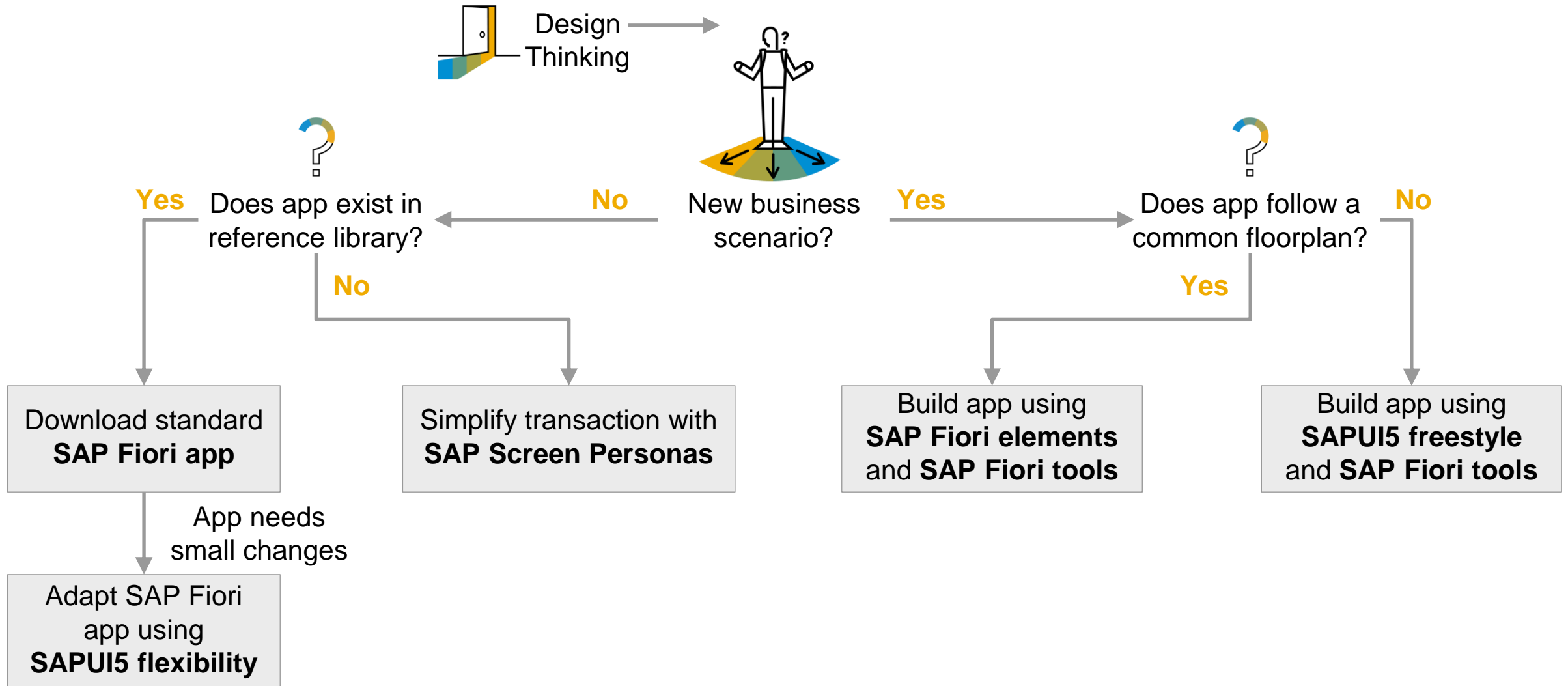
- See Persona's slide.

What kind of cards can be pinned to *My Home*?

- With SAP S/4HANA Cloud 2208 [analytical overview page \(OVP\) cards](#) can be pinned.
- Once pinned the OVP cards are converted into [UI5 integration cards](#).
- We intend to increase the scope for cards with SAP S/4HANA Cloud 2302 shipment and beyond (*).

(*) This is the current state of planning and can be changed by SAP without further notice

Choose the path to the SAP Fiori user experience based on your needs



Product fit in SAP portfolio

Federation layer:

Get relevant content across all SAP Solutions

SAP solutions layer:

Get relevant content across one SAP Solution

Spaces & Pages:

Organize resources per business role & work package

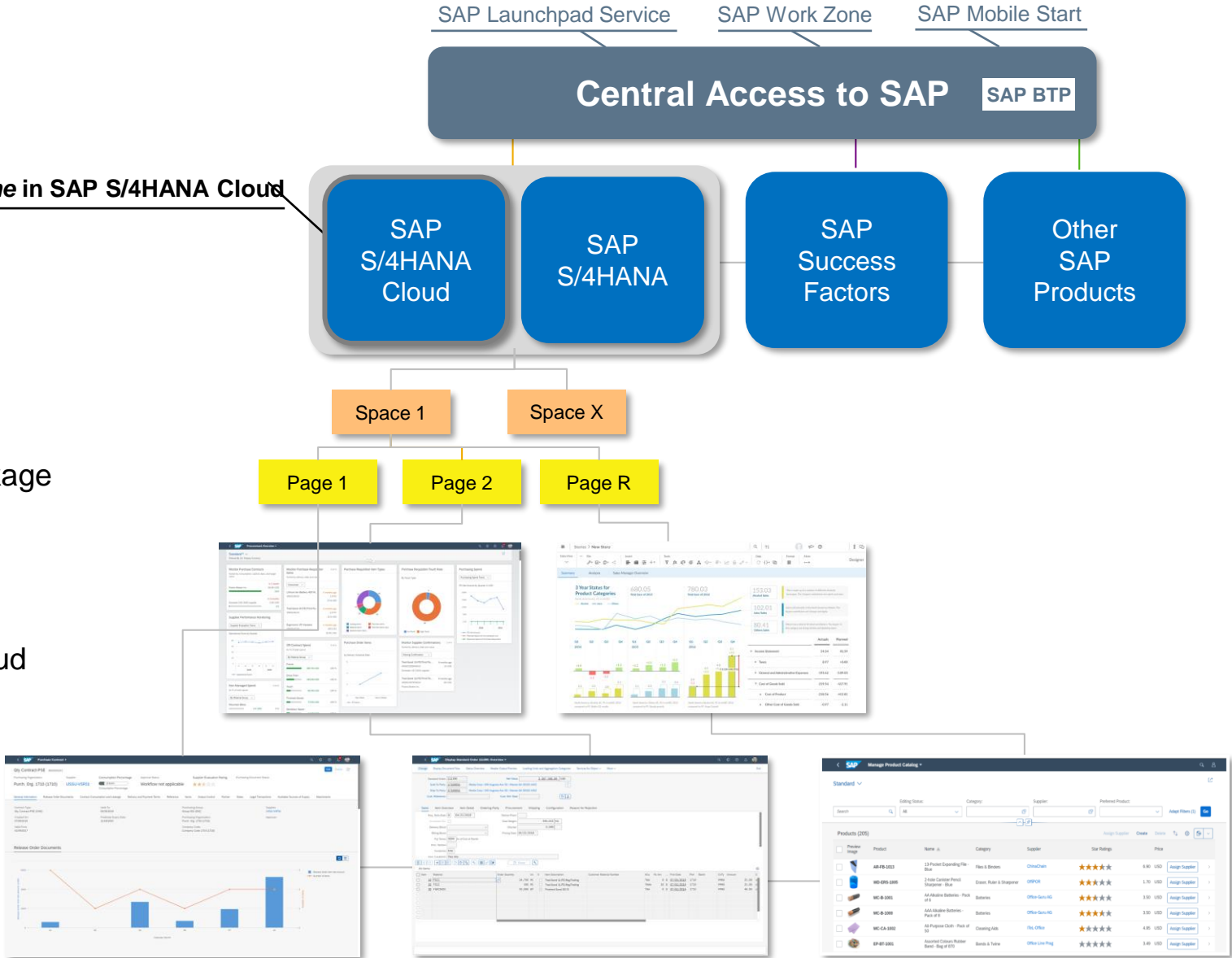
Domain-specific overviews:

Provide tailored insights through SAP Analytic Cloud dashboards or overview pages (OVP)

Details and in-depth exploration:

Get the app you need to do your job

new My Home in SAP S/4HANA Cloud



Mobile Start - Solution Architecture

SAP Mobile Start



SAP BTP Tenant
Abstraction & Unification



SAP Launchpad service

SAP Task Center ⁽²⁾

Notification service

SAP Mobile Services

SAP solutions like:
Business Data & Logic

SAP S/4HANA ⁽¹⁾ SAP SuccessFactors 

SAP Concur 

SAP Ariba 

SAP Fieldglass 

(1) Supporting native & web applications, SAP S/4HANA Cloud and on-premise

(2) Supporting SAP S/4HANA Cloud (public) and SAP S/4HANA on-premise, SAP SuccessFactors, SAP Fieldglass



Follow us



www.sap.com/contactsap

© 2022 SAP SE or an SAP affiliate company. All rights reserved.

No part of this publication may be reproduced or transmitted in any form or for any purpose without the express permission of SAP SE or an SAP affiliate company.

The information contained herein may be changed without prior notice. Some software products marketed by SAP SE and its distributors contain proprietary software components of other software vendors. National product specifications may vary.

These materials are provided by SAP SE or an SAP affiliate company for informational purposes only, without representation or warranty of any kind, and SAP or its affiliated companies shall not be liable for errors or omissions with respect to the materials. The only warranties for SAP or SAP affiliate company products and services are those that are set forth in the express warranty statements accompanying such products and services, if any. Nothing herein should be construed as constituting an additional warranty.

In particular, SAP SE or its affiliated companies have no obligation to pursue any course of business outlined in this document or any related presentation, or to develop or release any functionality mentioned therein. This document, or any related presentation, and SAP SE's or its affiliated companies' strategy and possible future developments, products, and/or platforms, directions, and functionality are all subject to change and may be changed by SAP SE or its affiliated companies at any time for any reason without notice. The information in this document is not a commitment, promise, or legal obligation to deliver any material, code, or functionality. All forward-looking statements are subject to various risks and uncertainties that could cause actual results to differ materially from expectations. Readers are cautioned not to place undue reliance on these forward-looking statements, and they should not be relied upon in making purchasing decisions.

SAP and other SAP products and services mentioned herein as well as their respective logos are trademarks or registered trademarks of SAP SE (or an SAP affiliate company) in Germany and other countries. All other product and service names mentioned are the trademarks of their respective companies.

See www.sap.com/trademark for additional trademark information and notices.