



# The Augmented Future for Analytics on SAP

Alex Sturge – Director of Sales

Yash Dalal – Solutions Engineer



**ASUG**



# OONI KODA 12 Pizza Oven



# Pyramid Analytics named a Visionary

Gartner®, Magic Quadrant™ for Analytics and Business Intelligence Platforms, 2023

Figure 1: Magic Quadrant for Analytics and Business Intelligence Platforms



Source: Gartner

- Pyramid Analytics **named a Visionary**
- Pyramid Analytics was **recognized for** its **Completeness of Vision** as well as its **Ability to Execute**
- Pyramid Analytics is recognized among 19 other vendors evaluated in the report

Gartner does not endorse any vendor, product or service depicted in its research publications, and does not advise technology users to select only those vendors with the highest ratings or other designation. Gartner research publications consist of the opinions of Gartner's research organization and should not be construed as statements of fact. Gartner disclaims all warranties, expressed or implied, with respect to this research, including any warranties of merchantability or fitness for a particular purpose. GARTNER is a registered trademark and service mark of Gartner, Inc. and/or its affiliates in the U.S. and internationally, MAGIC QUADRANT is a registered trademark of Gartner, Inc. and/or its affiliates and are used herein with permission. All rights reserved. This graphic was published by Gartner, Inc. as part of a larger research document and should be evaluated in the context of the entire document. The Gartner document is available upon request from Pyramid Analytics.

# Gartner® Recognizes Pyramid Analytics in the 2023 Critical Capabilities report

Gartner, Critical Capabilities for Analytics and Business Intelligence Platforms

- **Ranked 1<sup>st</sup>** in two use cases: **Augmented Consumer and Business Analyst**
- Pyramid Analytics was also **ranked** in other Use Cases,
  - **Second-highest** score for the **Data Scientist** Use Case
  - **Fourth-highest** score for the **Analytics Developer** Use Case.
- As an essential companion to the Gartner Magic Quadrant, this methodology provides deeper insight into providers' product and service offerings by extending the Magic Quadrant analysis.

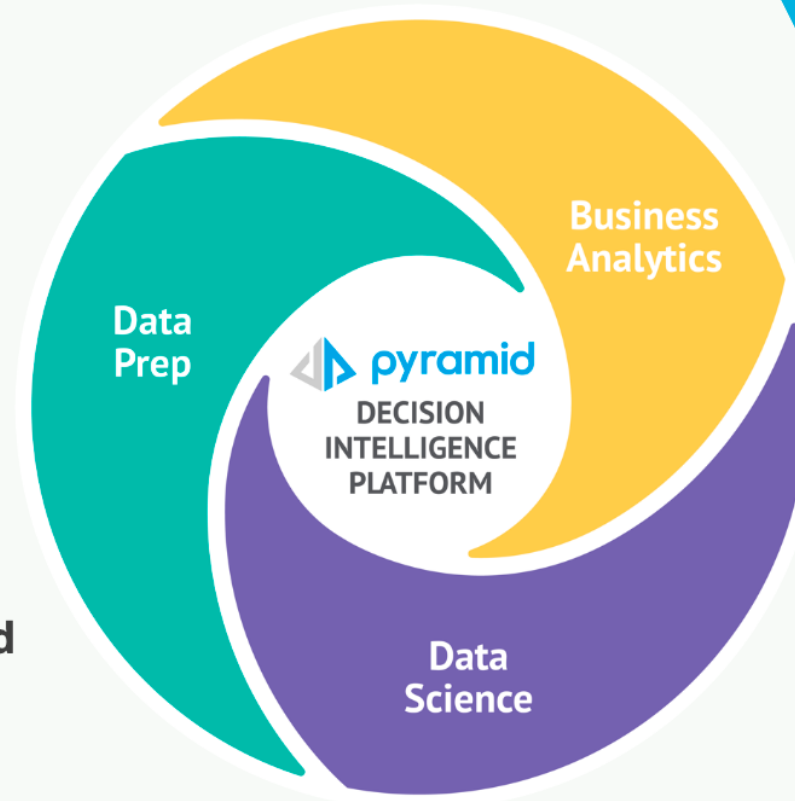


Gartner does not endorse any vendor, product or service depicted in its research publications, and does not advise technology users to select only those vendors with the highest ratings or other designation. Gartner research publications consist of the opinions of Gartner's research organization and should not be construed as statements of fact. Gartner disclaims all warranties, expressed or implied, with respect to this research, including any warranties of merchantability or fitness for a particular purpose. GARTNER is a registered trademark and service mark of Gartner, Inc. and/or its affiliates in the U.S. and internationally and is used herein with permission. All rights reserved.

# Pyramid Decision Intelligence Platform

Unified, complete and super-fast platform with flexible deployment options

- Speed Up Insights with Any Data**  
Provide multi-source direct access to any data at scale in a single view
- Scale Adoption for Any Person**  
Deploy automated, governed self-service experiences for any person
- Simplify Analytics for Any Analytics Need**  
Provision any analytics need with an integrated pipeline and a virtual semantic layer to futureproof analytic assets



**PYRANA**  
Super-fast direct query engine to connect to any data source



**Any Data**



**Any Person**



**Any Analytics Need**

# Why Pyramid and SAP?

## Modern Analytics

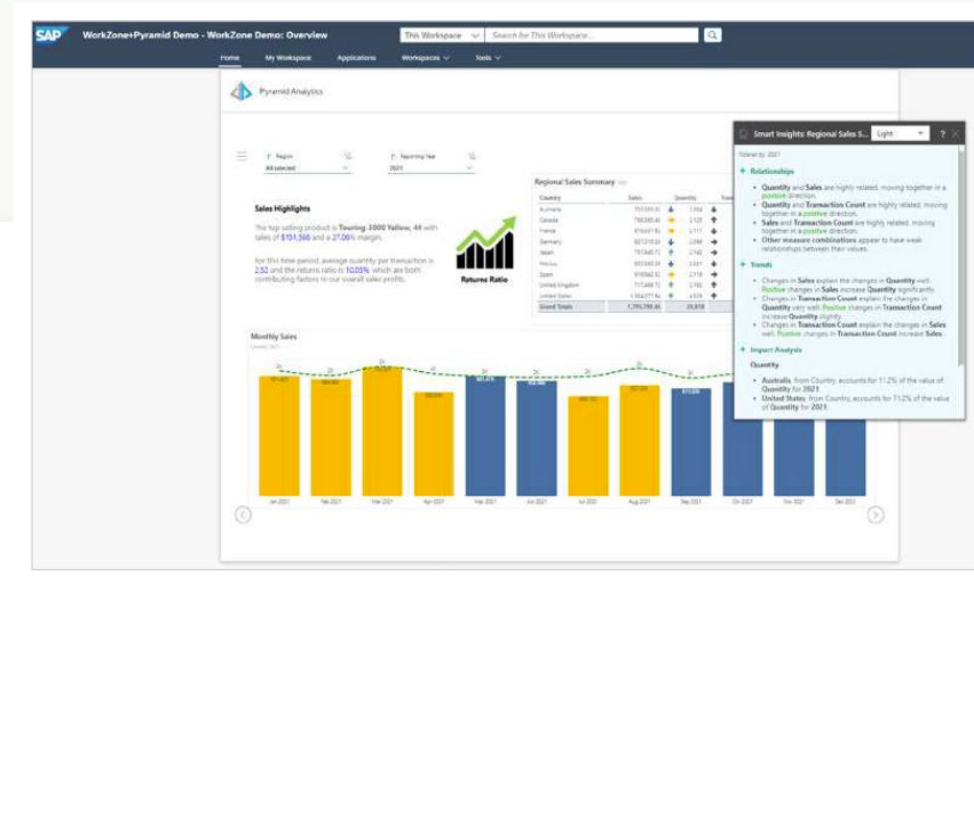
Directly query data to **SAP BW and SAP BW4/HANA,**

**Deep functional integration** with SAP BW, SAP BW4/HANA and HANA such as business hierarchies, business logic, currency calculations and model parameters

**Leverage existing data security and governance** in SAP BW, BW/4HANA

**Deploy anywhere** to meet your needs ( on-prem, public cloud, private cloud)

Analyze **SAP data** alongside with **any other data sources**, on-prem and cloud



**SAP® Certified**  
Integration with SAP NetWeaver®

**SAP® Certified**  
Integration with SAP HANA®

**SAP® Certified**  
Integration with SAP BW/4HANA

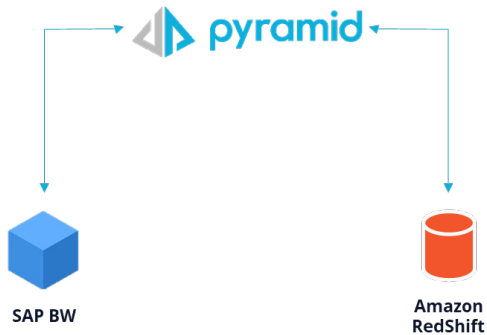
Available on  
**SAP Store**



# Why SAP customers choose the Pyramid Decision Intelligence Platform



Premier Foods is one of Britain's biggest manufacturers non-perishable goods, employing over 4,000 people across 15 manufacturing sites across the UK.



## Use Cases

Pyramid started with one use case (daily sales) and quickly expanded: procurement, stock, customer care, packaging use, Smart Factories (energy consumption), new product development, ESG, master data reporting, forecasting

## Pyramid Differentiators

- Ability to run direct query against SAP BW and Redshift
- Performance
- Better support for hybrid deployments
- Custom calculations and the ability to work with hierarchies from a variety of sources

## Outcomes & Next steps

- **Saved 100 days** of effort a year through automation
- Execs and sales teams get **faster insights**
- **Single source** of truth now across departments

# Get More From Your SAP Data!

- Direct Access to both SAP/BW, BW/4HANA, HANA data & Non-Sap Data
- Backlog of Report Requests – deliver on self-service
- Data Governance Challenges – Excel?
- Moving/replicating/ingesting of my SAP/BW, BW/4HANA, HANA
- Current BI tools yield high TCO for analytics projects
  - Infrastructure costs, Support and maintenance costs



**SAP® Certified**  
Integration with SAP NetWeaver®

**SAP® Certified**  
Integration with SAP HANA®

**SAP® Certified**  
Integration with SAP BW/4HANA

Available on  
**SAP Store**



# Customer Benefits of Pyramid + SAP

- **Speed up insights** without rebuilding hierarchies and business logic outside your SAP system, with the fastest direct query engine in the market
- **Lower TCO** by preserving and maximizing your SAP investments, reducing time and effort to retrain your developers and business users on a new system of record, and removing the need to build another architecture to support your analytics needs
- **Bridge legacy migrations** by providing consistent analytics experience while upgrading your SAP systems
- **Faster Analytics** from SAP BW, BW/4HANA, and HANA with no data extraction
- **Cross analytics** that blend SAP and non-SAP data
- **Empower any user** from the boardroom to the frontline and the 'shop' floor

# Pyramid Analytics – Product Overview