



WORKSOFT®

Trust in Automation

Actionable Insights to Speed S/4HANA Modern Migration

2023

What We'll Cover...

- Modern Challenges with S/4 Migration
- Identifying S/4 Migration Approaches
- Customer Story 1: Accelerating Your Understanding of Process
- Customer Story 2: The Truth about Reducing Defects and Maximizing Coverage
- Customer Story 3: Don't Wait for S/4 to Start Automating
- Customer Story 4: Automation Speeds Implementation

Modern Challenges with S/4 Migration



Current Application Landscape

FRAGMENTED

application landscape with geographically distributed, socially distanced teams

POOR EXPERIENCE

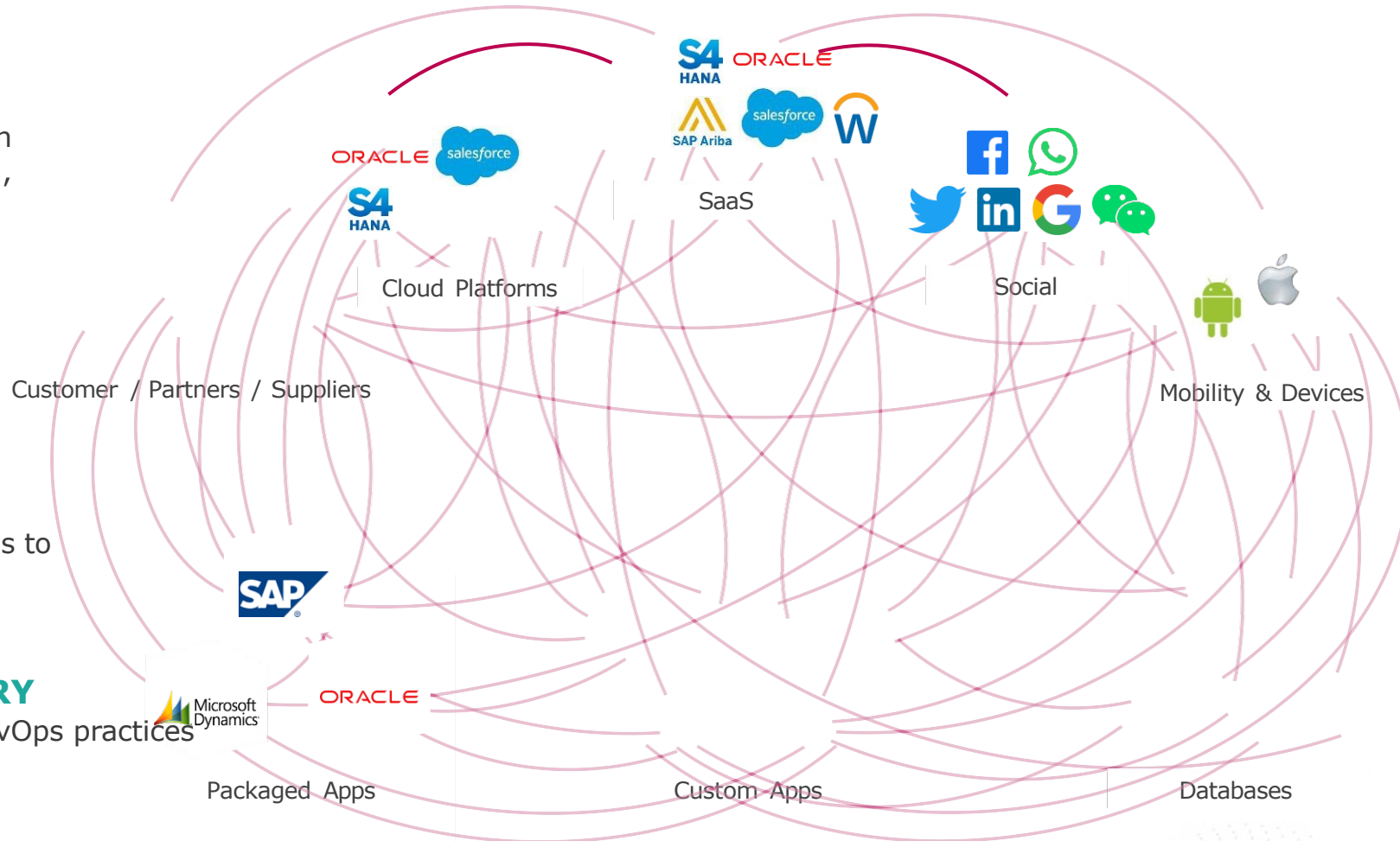
for both customers and employees

TECHNOLOGY RISK

associated with increased reliance on enterprise apps to run the business

OUTDATED DELIVERY

with limited Agile and DevOps practices



Quantifying the Challenge

87%

Say the most important requirement as they migrate to SAP S/4HANA is...

minimal disruption to operations

Source: SAP Insider SAP S/4HANA Migration 2021 Benchmark Report

63%

Report that automation provides **cost savings**

Source: ASUG Insight Spotlight Survey 2021

39%

of SAP S/4HANA customers **underestimated the complexity** of their migration

Source: ASUG Whitepaper, "Expedite SAP S/4HANA Migrations and Maintain Business Continuity with Automation."

Identifying S/4 Migration Approaches



Approach to S/4 Migration

*No matter the approach or stage in your S/4 Journey, **automation is essential***

BROWNFIELD/ HYBRID

Automate now,
reuse later

Capture, document, &
automate testing in ECC
SAP GUI and E2E apps

Reuse ECC GUI automation
in S/4HANA to test
S/4HANA business process
readiness.

GREENFIELD

Start with a new and
clean slate

Capture, document &
automate testing in E2E
apps

Build understanding of
apps and processes that
will interface with S/4HANA

*"End-to-end automation has allowed us to **gain efficiency and uncover defects we wouldn't have normally seen manually.** We use automation to validate data loads and identify data defects early, and we've automated close to 100% of our regression testing to build a foundation for the future."*

-Sachin Chhabra, IT Director,
PepsiCo

Accelerating Your Understanding of Process

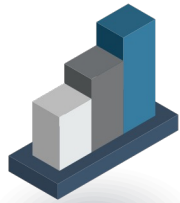
Heather Whitfield

Head of Process and Test Automation

Applied Materials

Applied Materials

Worlds #1 semiconductor and display equipment company, Est. 1967



\$23.06 billion in revenue
(TOTAL in 2021)



~15,700 patents



~27,000 employees
in **19** countries

WORKSOFT[®]



The last 15 years I've spent building the automation program...**number 1 challenge...the business really does not understand their processes completely. They think they do, but they really don't and if we can't get that process knowledge how are we going to move to S/4. It's a huge barrier.**



Heather Whitfield

Head of Process and Test Automation



So what we're doing. **We've started by focusing on the people first.** Looking at the process knowledge we have within our business. **Not just relying on the functional resources that we think has a lot of this knowledge, but actually looking into the business itself...to try to take this inventory of what process knowledge is out there...who we need to become part of the program. Who do we really need to bring in? And then looking to see where we have gaps.**

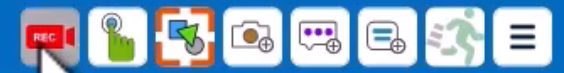


SAP Easy Access

Other menu Create role More Exit

- Favorites
- SAP Menu
 - Connector for Multi-Bank Connectivity
 - Office
 - Cross-Application Components
 - Logistics
 - Accounting
 - Human Resources
 - Patient Accounting
 - Information Systems
 - Customer Management
 - Tools
 - WebClient UI Framework

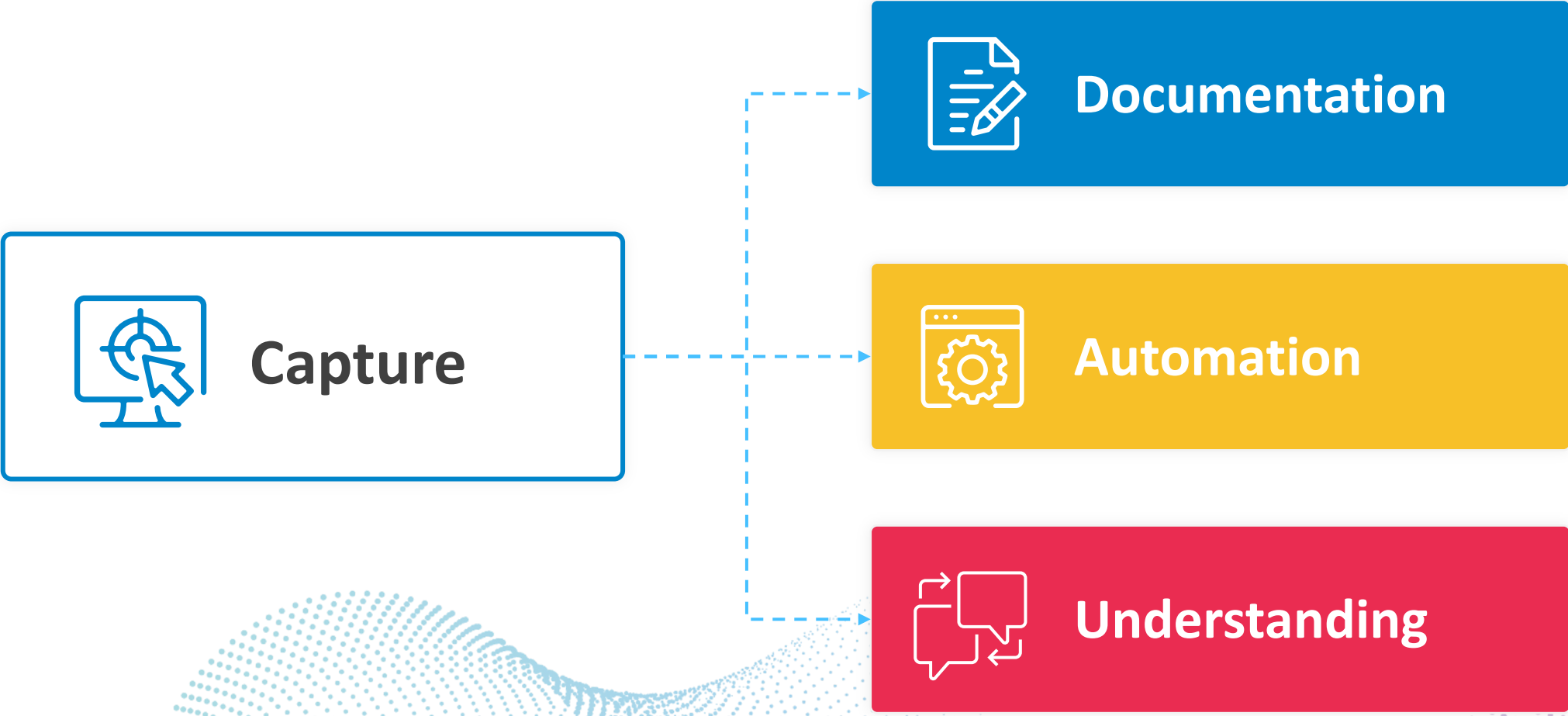
Untitled Capture



Start or Stop Capture

Activity/Step

Capture Reset



Capture



Documentation



Automation



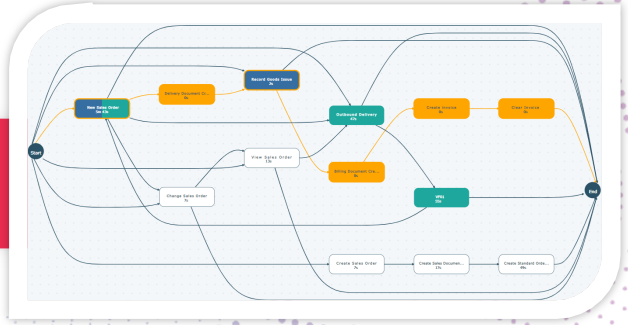
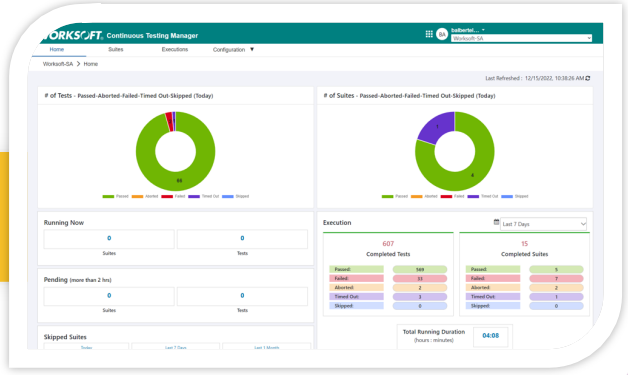
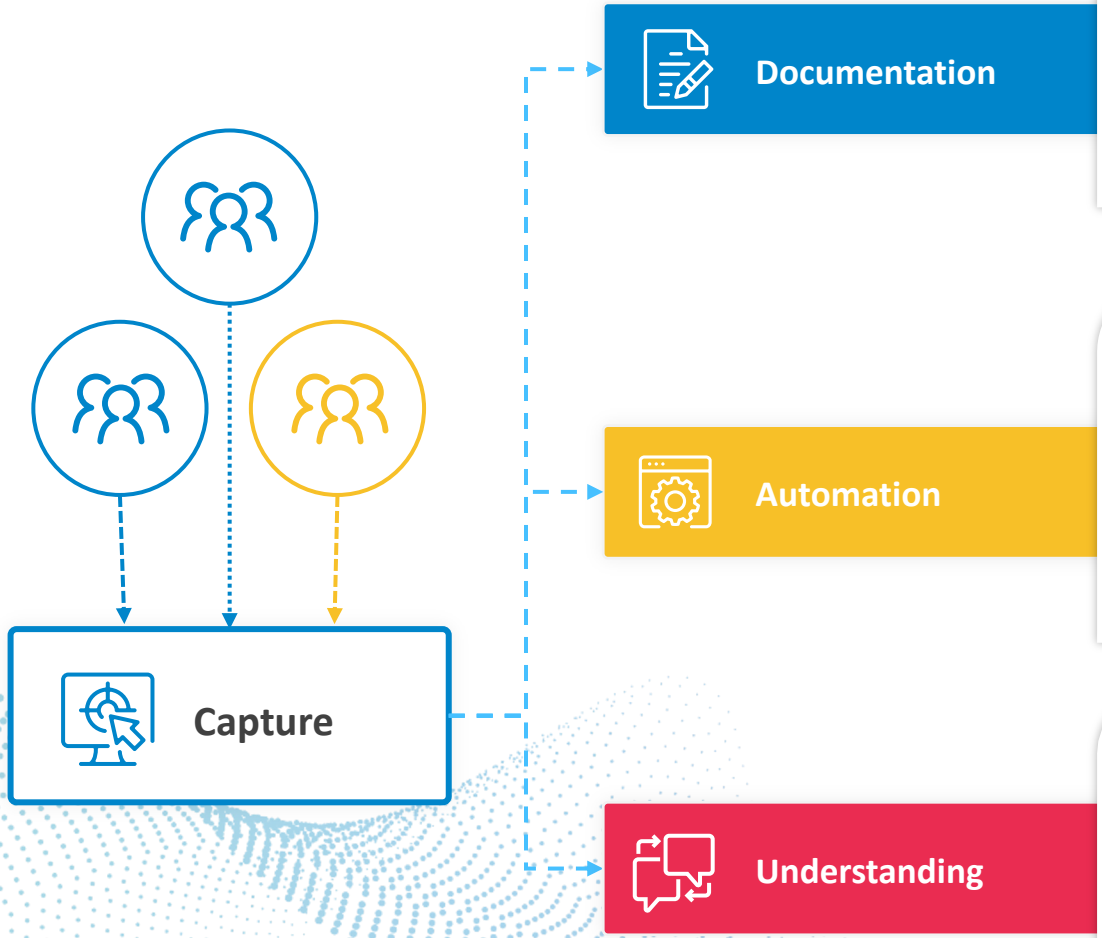
Understanding

Capture

Anyone can contribute with Capture

Contributors:

- Manual testing of the Manual processes
- User Acceptance Testing
- Exploratory Testing
- Production user
- SME's or BA's
- New functions
- And more...



Key Points:

People will accelerate your understanding of Process

WORKSOFT[®]

- Empower people to enable you understand as-is Processes across the business
 - *What processes migrate vs. improvement opportunities*
- Test during S/4 development & deployment
 - *Don't wait... Empower your people*

The Truth about Test Cycle Speed, Defects and Coverage

Wout Jacobs

Test Automation Architect

Dutch Railways

Dutch Railways

The world's busiest rail network



WORKSOFT[®]

- Defining the goals of Test Automation?
 - Test Faster (automation is faster than manual)
 - Coverage (automate earlier, automate more)
 - Detect Defects sooner to react quicker

- What should you aim to do?
 - Continuous Testing –finance, procurement, supply chain, logistics
 - Run's so "we don't have to look at it"
 - 8/9 am see the results, our test results are in can take action on the results quicker, every single day,

Applied Filters
→ Variant Unique

Order to Cash ▾



Filters

Clear All

Variant

Unique

1 6 - 6 9

- 6 + to - 6

Frequency

Duration ▾

Source ▾

Fixed Cost ▾

Variable Cost ▾

Activities ▾

Connections ▾

Don't Wait for S/4 to Start Automating

Jeenda Sri Ranjan

CEO & Co-Founder

ThreeRun – Working with BASF

ThreeRun

Managing Testing for BASF (Chemicals)



- If I create automation on ECC, will it be wasted when I move to S/4HANA?
 - No! Don't delay, start automating today!
 - Only Worksoft can migrate automation assets from ECC (SAP GUI) to S/4HANA automatically

Worksoft SAP ECC to S/4HANA Converter

The screenshot displays the Worksoft SAP ECC to S/4HANA Converter interface. At the top, there is a toolbar with icons for navigation and actions: Back, Forward, Refresh, Folder, New, Edit, Delete, Export, Print, Cut, Copy, Paste, Run, Run in CTM, and Processes. A search bar is located in the top right corner.

The main interface is divided into several sections:

- Processes:** A table listing executed processes. The table has columns for ID, Name, Description, Status, and Created By. Two processes are listed:

ID	Name	Description	Status	Created By
481	EZE - OTC - SAPGUI		Passed	admin
524	WebGUI_EZE - OTC - SAPGUI		Passed	admin

Folders: A tree view on the left shows the project structure. The 'Converter' folder is expanded, showing sub-folders like 'IMPORT_2023_03_16_12_57_11', 'Functional Tests', '1. Regression Tests', '3. Sandbox', 'Nicolas Ioannou', 'EZE', 'OTC', 'SAP', and 'Utilities'. The 'OTC' folder is currently selected.

Details: A panel at the bottom right shows the 'Steps' tab for the selected process. It contains a table with columns for Application Version, Window, Object, Action, and Narrative.

Application Version	Window	Object	Action	Narrative
System 1.0	System	Execution	Execute Process	Exec Process WebGUI_App_Launch SAP GUI at 'First Step' ...
System 1.0	System	Execution	Execute Process	Exec Process WebGUI_SAPGUI - Create Sales Order - VA01 - NI
System 1.0	System	Execution	Execute Process	Exec Process WebGUI_SAPGUI - Outbound Delivery - VL01N - C
System 1.0	System	Execution	Execute Process	Exec Process WebGUI_SAPGUI - 1809 - Logoff - NI at 'First

At the bottom left, there are buttons for 'Requirements' and 'Maps'. The bottom status bar shows 'Project: Converter (admin)' and a timer at '00:53.35'.

Automation Speeds Implementation

Christopher Pete

Automation Director

Ariel Corporation

Automation Speeds Implementation

Automated Testing Enables S/4 Go Live Ahead of Schedule

“We kicked off our SAP conversion in July of 2020. We had an estimated go live of around January, 2021. We were actually able to realize our go live much sooner. Rarely do you hear an SAP project going live earlier than what was initially planned. **One of the big factors that allowed us to really realize that was the fact that we had automated a lot of the testing.**”



CHRISTOPHER PETE
ARIEL CORPORATION



75% TESTING
FASTER

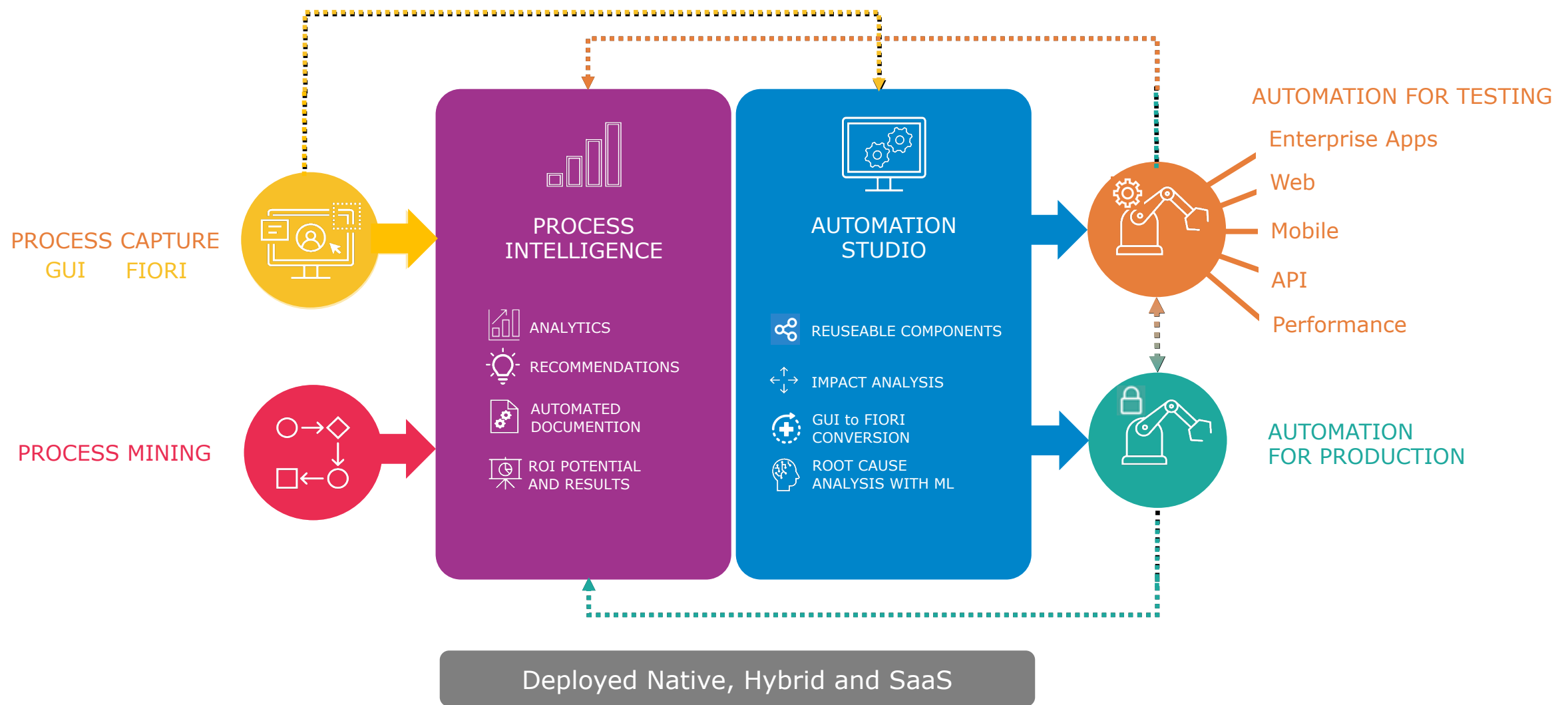
2 Months AHEAD OF
SCHEDULE

So, What did we hear?

Key Themes from Customer Stories

The logo for WORKSOFT, featuring the word "WORKSOFT" in a bold, black, sans-serif font. The letter "O" is replaced by a blue circle with a white dot in the center, resembling a stylized eye or a target. A registered trademark symbol (®) is located to the right of the text. The logo is positioned in the upper right quadrant of the slide, partially overlapping a decorative background of colorful dots in shades of yellow, orange, pink, purple, and blue.

WORKSOFT® Connective Automation Platform



Thank you